



Pioneer Energy Services

Microresistivity Log

API No.	15-195-22839-00-00		
Company	Brito Oil Company, Inc.		
Well	Griebel #1-31		
Field	Wildcat		
County	Trego	State	Kansas
Location	1527' FNL & 1424' FWL		
Sec: 31	Twp: 11S	Rge: 25W	Other Services CNL/CDL DIL

Permanent Datum	Ground Level	Elevation 2595	K.B. 2604
Log Measured From	Kelly Bushing	9 Ft. Above Perm. Datum	D.F. 2595
Drilling Measured From	Kelly Bushing		G.L. 2595
Date	1/2/2013		
Run Number	Two		
Depth Driller	4580		
Depth Logger	4560		
Bottom Logged Interval	4559		
Top Log Interval	3600		
Casing Driller	8.625 @ 270		
Casing Logger	264		
Bit Size	7.875		
Type Fluid in Hole	Chemical		
Salinity, ppm CL	1600		
Density / Viscosity	9.4	53	
pH / Fluid Loss	10.5	7.8	
Source of Sample	Flowline		
Rm @ Meas. Temp	0.70	@ 48	
Rmf @ Meas. Temp	0.53	@ 48	
Rmc @ Meas. Temp	0.95	@ 48	
Source of Rmf / Rmc	Charts		
Rm @ BHT	0.27	@ 124	
Operating Rig Time	4 Hours		
Max Rec. Temp. F	124		
Equipment Number	91		
Location	Hays		
Recorded By	D. Schmidt		
Witnessed By	Brad Rine		

<<< Fold Here >>>

All interpretations are opinions based on inferences from electrical or other measurements and we cannot and do not guarantee the accuracy or correctness of any interpretation, and we shall not, except in the case of gross or willful negligence on our part, be liable or responsible for any loss, costs, damages, or expenses incurred or sustained by anyone resulting from any interpretation made by any of our officers, agents or employees. These interpretations are also subject to our general terms and conditions set out in our current Price Schedule.

Comments

Thank you for using Log-Tech, Inc.
(785) 625-3858

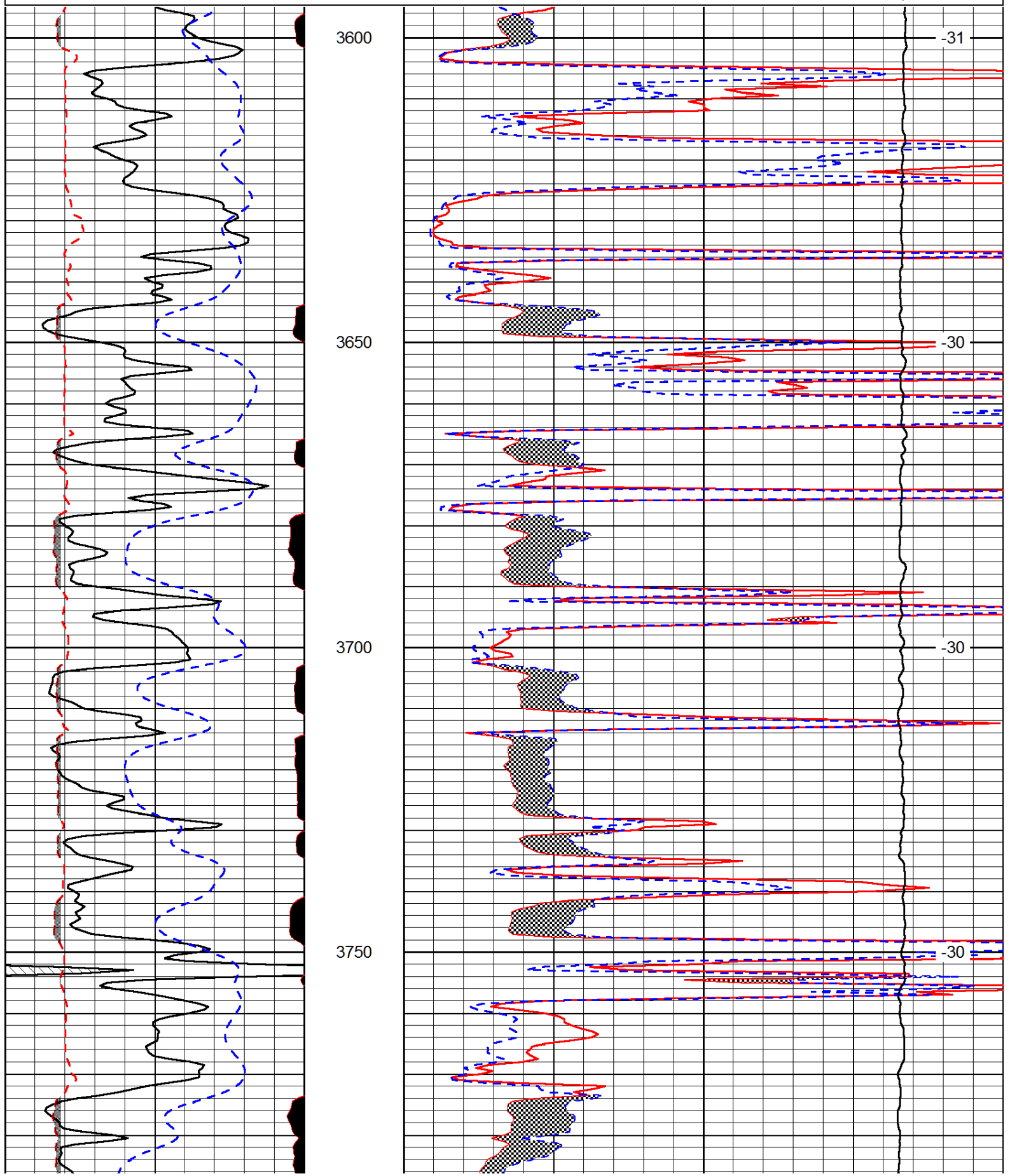
Collyer,
North to G Rd, 1 1/2 West, 1/2 North,
East into

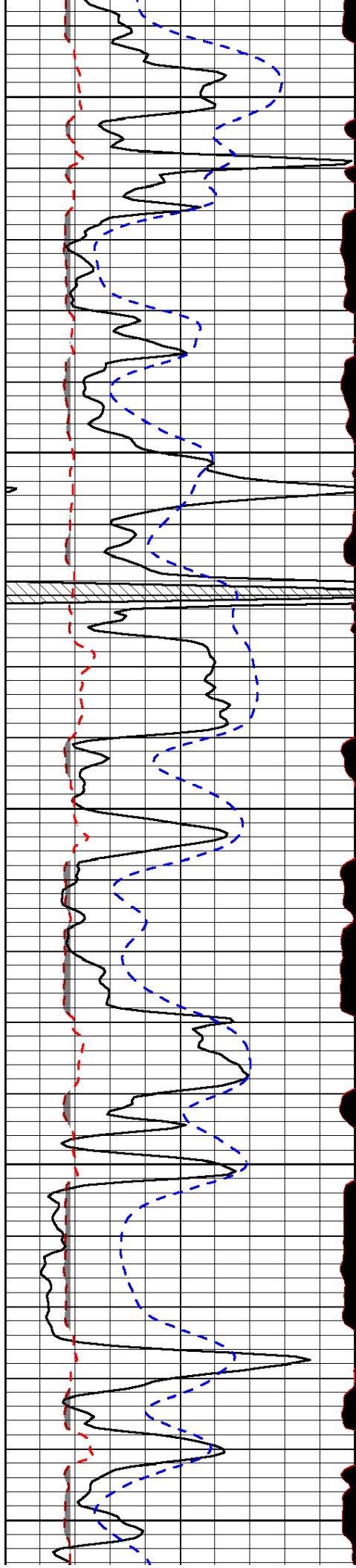
Database File: brito_010212hd.db
 Dataset Pathname: dil/brstack
 Presentation Format: micro
 Dataset Creation: Wed Jan 02 07:16:05 2013
 Charted by: Depth in Feet scaled 1:240

0	Gamma Ray (GAPI)	150
6	MCAL (in)	16
2.875	Mud Cake (in)	7.875
-200	SP (mV)	0

0	Micro Inverse 1 X 1 (Ohm-m)	40
0	Micro Normal 2" (Ohm-m)	40
10000	Line Weight (lb)	0

LSPD
(ft/min)





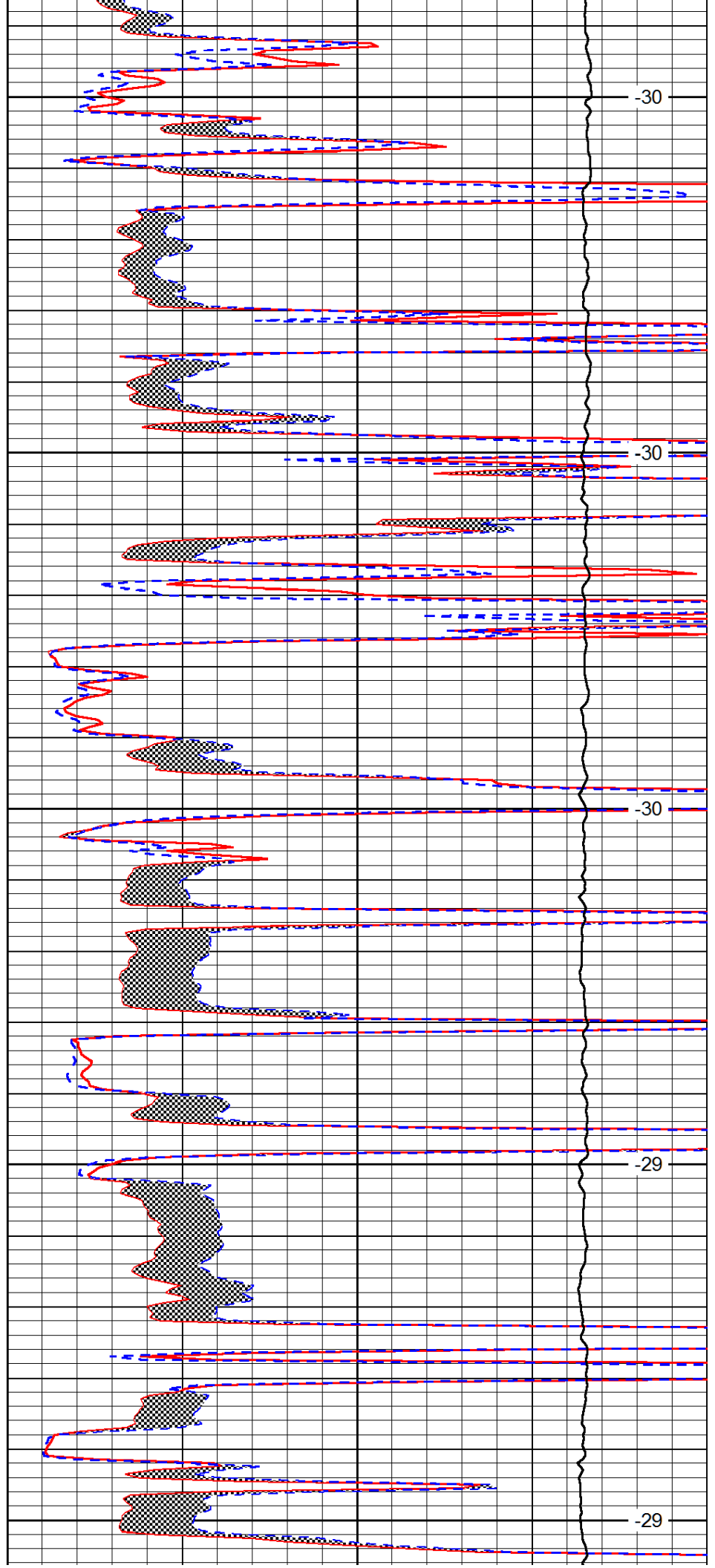
3800

3850

3900

3950

4000



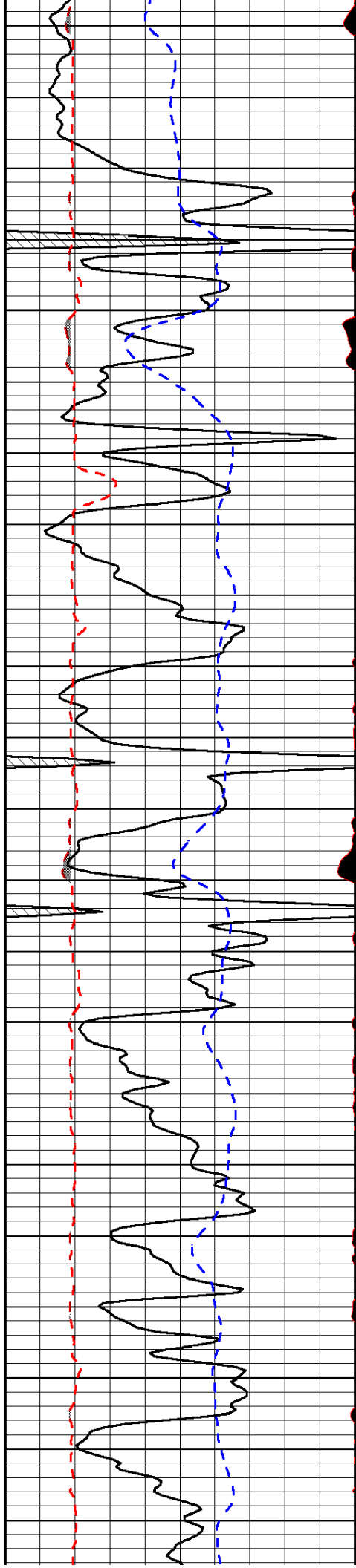
-30

-30

-30

-29

-29

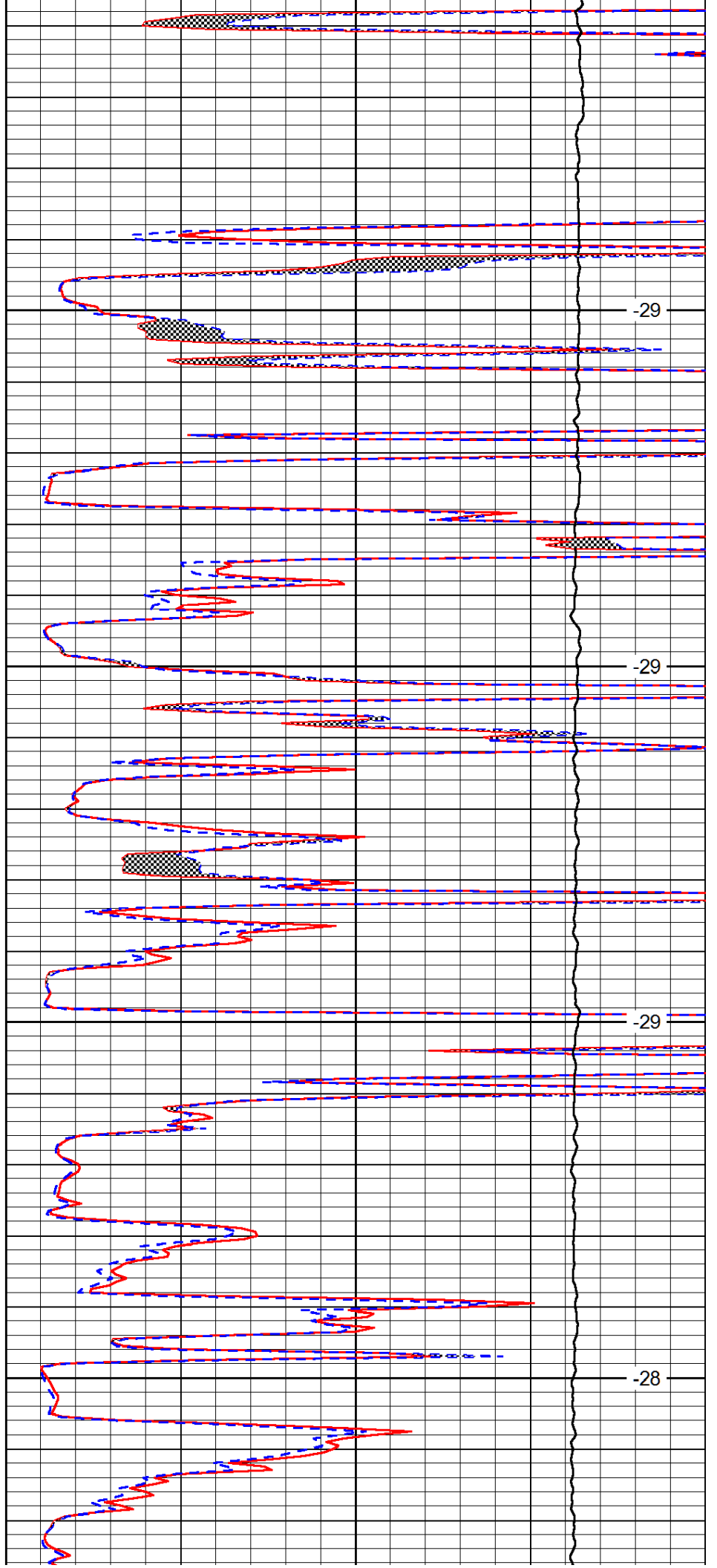


4050

4100

4150

4200

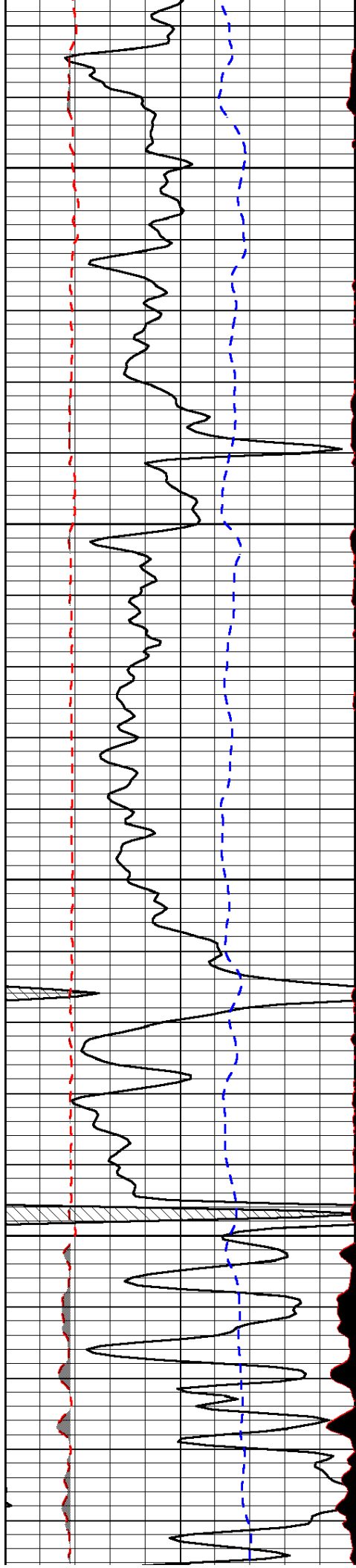


-29

-29

-29

-28

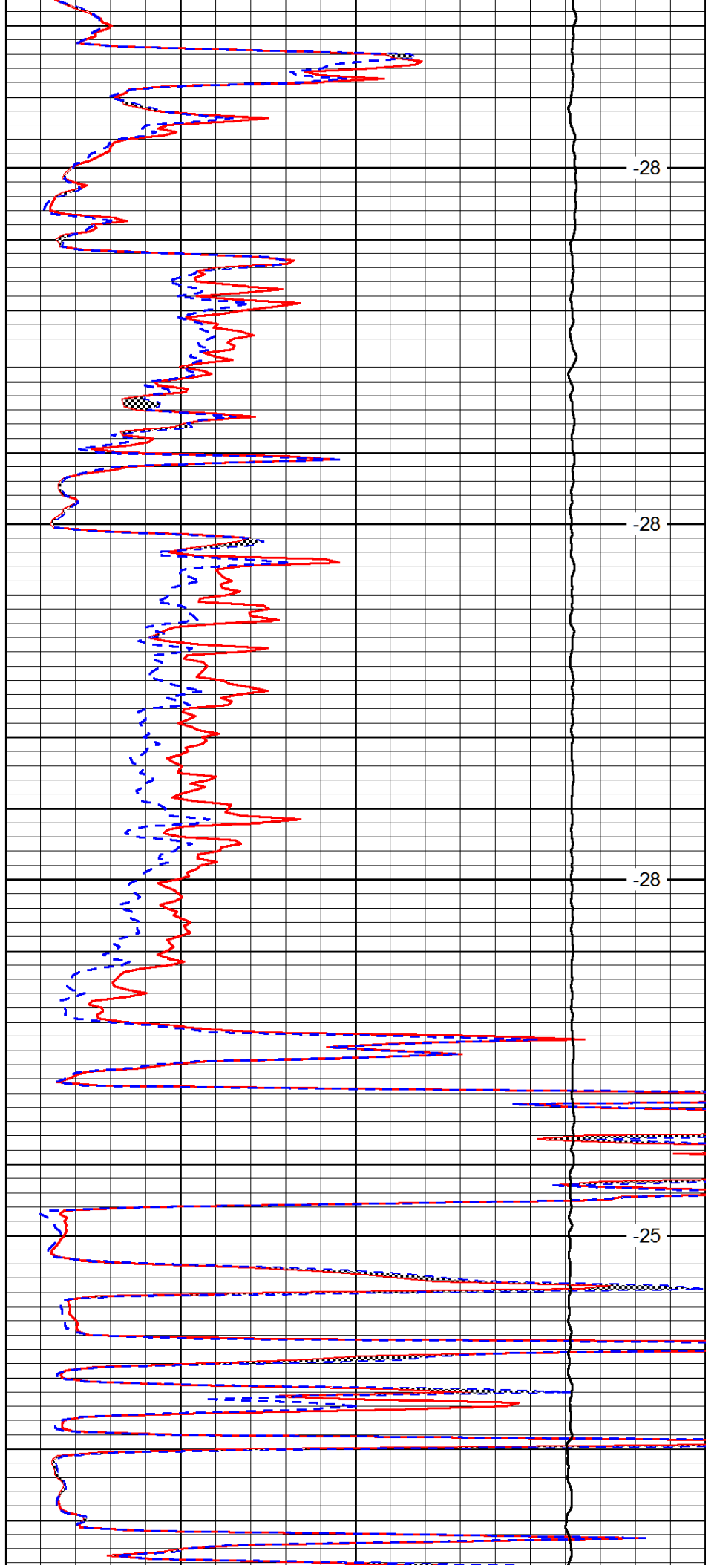


4250

4300

4350

4400

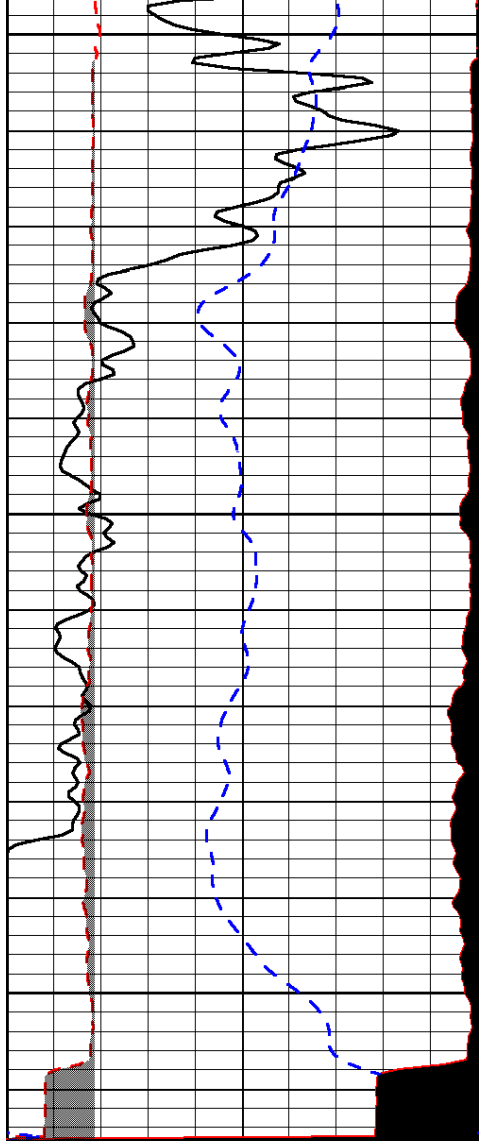


-28

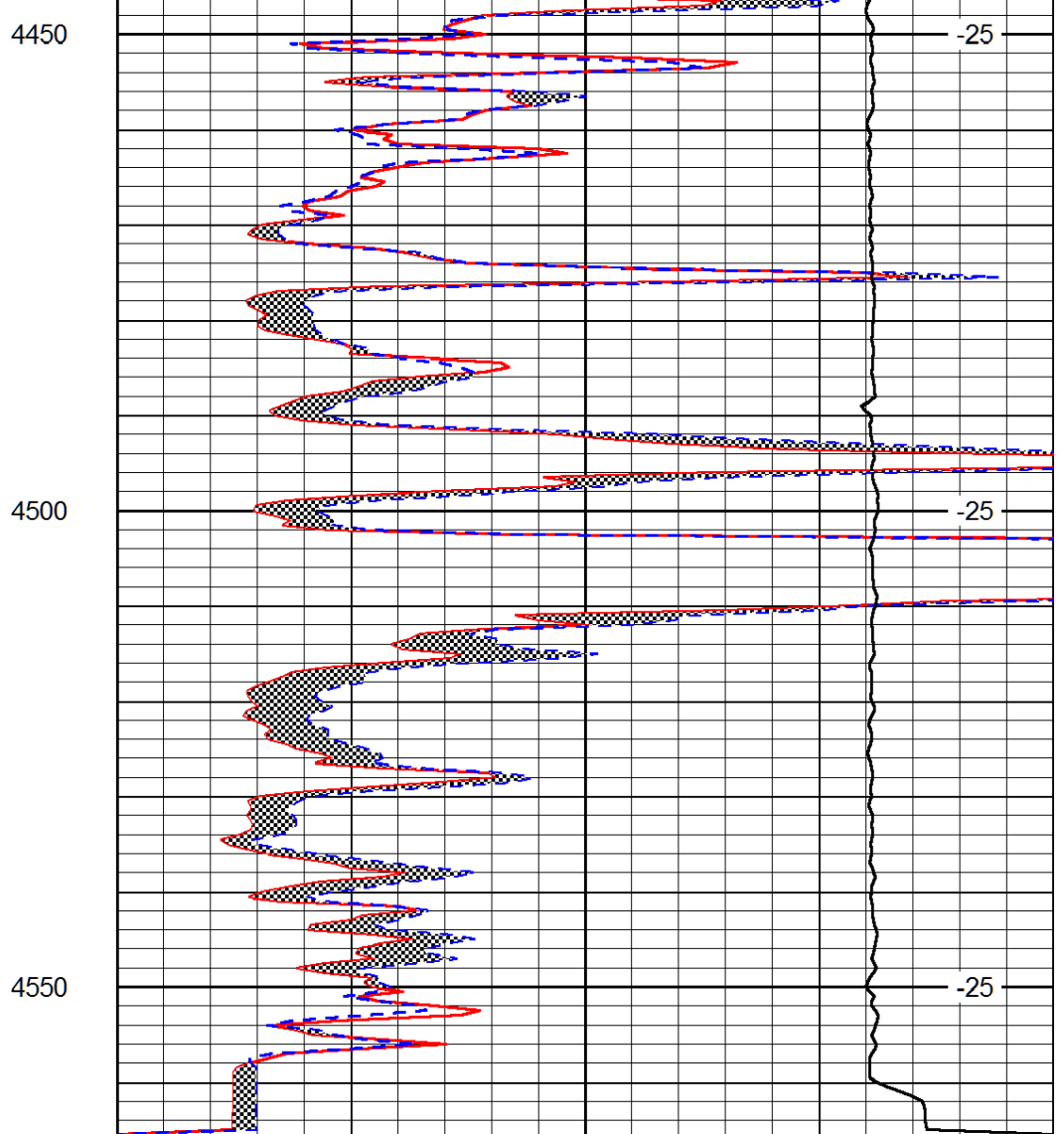
-28

-28

-25



0	Gamma Ray (GAPI)	150
6	MCAL (in)	16
2.875	Mud Cake (in)	7.875
-200	SP (mV)	0



0	Micro Inverse 1 X 1 (Ohm-m)	40
0	Micro Normal 2" (Ohm-m)	40
10000	Line Weight (lb)	0

LSPD (ft/min)
