



**MIDWEST SURVEYS**  
 LOGGING - PERFORATING - CONSULTING SERVICES  
 P.O. Box 66, Osawatomie, KS 66064  
 913 / 755 - 2128

**GAMMA RAY / NEUTRON / CCL**

File No. \_\_\_\_\_

Company **ST Petroleum, Inc.**

Well **Thomas "B" No. 1-1**

Field **Longanecker Southeast**

County **Johnson** State **Kansas**

Location **5110' FSL & 1951' FEL**

Other Services **Perforate**

Sec. **31** Typ. **14s** Rq. **22e**

Permanent Datum **GL** Elevation **NA**

Log Measured From **GL** Elevation **NA**

Drilling Measured From **GL** Elevation **NA**

Date **09-23-2013**

Run Number **One**

Depth Logger **931.0**

Bottom Logged Interval **930.0**

Top Log Interval **200.0**

Fluid Level **Full**

Type Fluid **Water**

Density / Viscosity **NA**

Salinity - PPM Cl **NA**

Max Recorded Temp **NA**

Equipment No.	Location
107	Osawatomie
Recorded By	Steve Mindich
Witnessed By	Rick Singleten

BORE-HOLE RECORD		CASINGS RECORD	
Run No.	BIT FROM TO	SIZE	WGT. FROM TO
One	9.875" 0.0 22.0	7.00 17.0#	0.0 22.0
Two	5.625" 22.0 990.0	2.875" 6.5#	0.0 945.7
		Baffle	Set At
			937.2

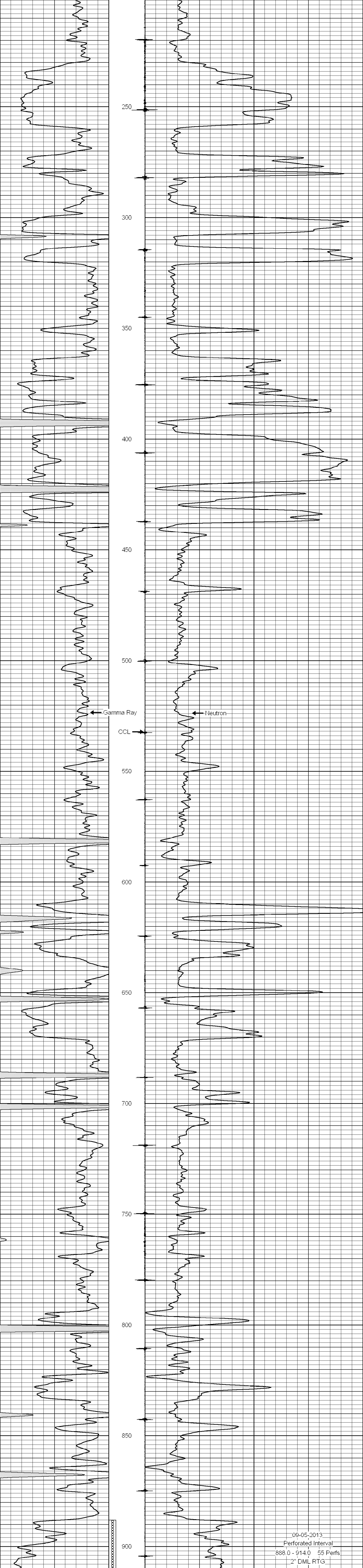
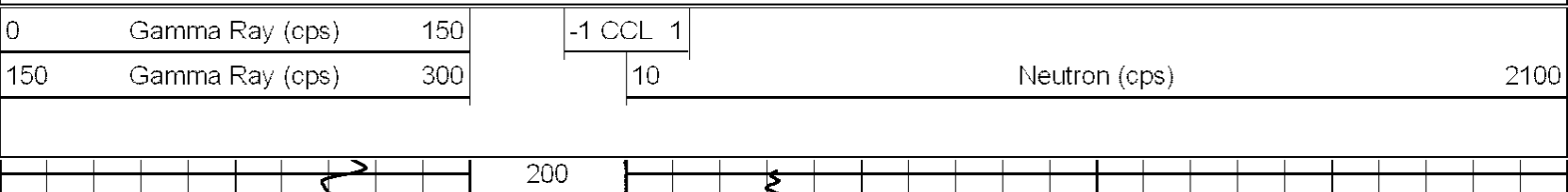
<<< Fold Here >>>

All interpretations are opinions based on inferences from electrical or other measurements and we cannot and do not guarantee the accuracy or correctness of any interpretation, and we shall not, except in the case of gross or willful negligence on our part, be liable or responsible for any loss, costs, damages, or expenses incurred or sustained by anyone resulting from any interpretation made by any of our officers, agents or employees. These interpretations are also subject to our general terms and conditions set out in our current Price Schedule.

**Comments**

Drilling Contractor :  
 Town Oilfield Services, Inc.

Database File: thomas1ib.db  
 Dataset Pathname: pass1  
 Presentation Format: gr-n-ccl  
 Dataset Creation: Fri Aug 23 12:51:42 2013 by Log SCH 111116  
 Charted by: Depth in Feet scaled 1:240



09-05-2013  
 Perforated Interval  
 888.0 - 914.0 55 Perfs  
 2" DML RTG

