



**MIDWEST SURVEYS**  
 LOGGING - PERFORATING - CONSULTING SERVICES  
 P.O. Box 69, Osawatomie, KS 66064  
 913 / 755 - 2128

**GAMMA RAY / NEUTRON / CCL**

File No.

Company **ST Petroleum, Inc.**

Well **Thomas "B" No. - 7**

Field **Longanecker Southeast**

County **Johnson** State **Kansas**

Location **4550 FSL & 1671<sup>st</sup> FEL  
NW-SE-NW-NE**

Other Services  
Perforate

Sec. 31 Type 14s Rge. 22e  
 Permanent Datum GL Elevation NA  
 Log Measured From GL  
 Drilling Measured From GL

Elevation  
K.B. NA  
D.F. NA  
G.L. NA

Date

08-23-2013

Run Number

One

Depth Driller

960.0

Depth Logger

924.8

Bottom Logged Interval

923.8

Top Log Interval

290.0

Fluid Level

Full

Type Fluid

Water

Density / viscosity

NA

Salinity - PPM Cl

NA

Max Recorded Temp

NA

Estimated Cement Top  
Equipment No. 107 Location Osawatomie  
Recorded By Steve Winkler  
Witnessed By Rick Singleton

BORE-HOLE RECORD

RUN

No.

BIT

FROM

TO

SIZE

WGT.

17.0#

FROM

TO

NO.

BIT

FROM

TO

SIZE

WGT.

17.0#

FROM

TO

NO.

BIT

FROM

TO

SIZE

WGT.

17.0#

FROM

TO

NO.

BIT

FROM

TO

SIZE

WGT.

17.0#

FROM

TO

NO.

BIT

FROM

TO

SIZE

WGT.

17.0#

FROM

TO

NO.

BIT

FROM

TO

SIZE

WGT.

17.0#

FROM

TO

NO.

BIT

FROM

TO

SIZE

WGT.

17.0#

FROM

TO

NO.

BIT

FROM

TO

SIZE

WGT.

17.0#

FROM

TO

NO.

BIT

FROM

TO

SIZE

WGT.

17.0#

FROM

TO

NO.

BIT

FROM

TO

SIZE

WGT.

17.0#

FROM

TO

NO.

BIT

FROM

TO

SIZE

WGT.

17.0#

FROM

TO

<<< Fold Here >>>

All interpretations are opinions based on inferences from electrical or other measurements and we cannot and do not guarantee the accuracy or correctness of any interpretation, and we shall not, except in the case of gross or willful negligence on our part, be liable or responsible for any loss, costs, damages, or expenses incurred or sustained by anyone resulting from any interpretation made by any of our officers, agents or employees. These interpretations are also subject to our general terms and conditions set out in our current Price Schedule.

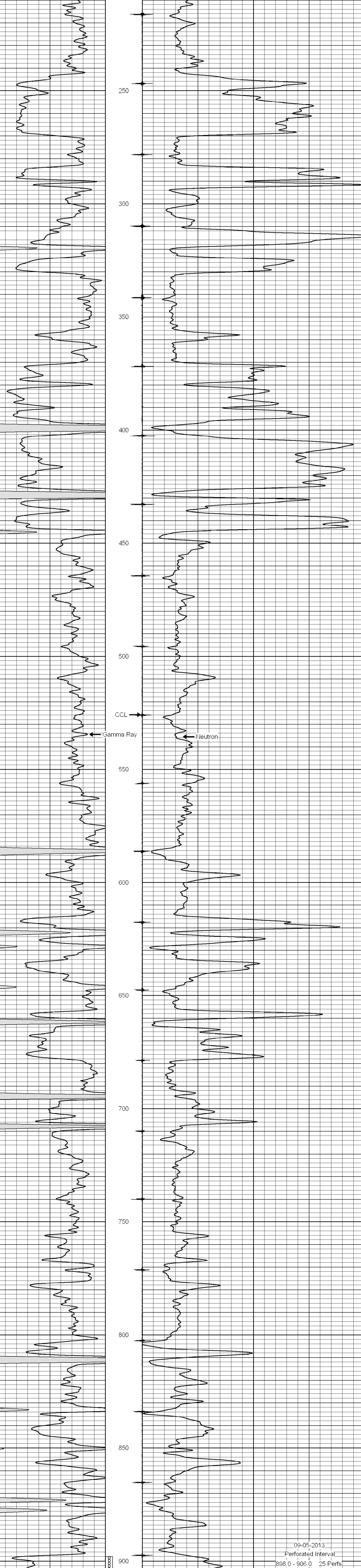
Comments

Drilling Contractor :  
Town Oilfield Services, Inc.

Database File: thomas7b.db  
 Dataset Pathname: pass1  
 Presentation Format: gr-n-ccl  
 Dataset Creation: Fri Aug 23 15:04:21 2013 by Log SCH 111116  
 Charted by: Depth in Feet scaled 1:240

0 Gamma Ray (cps) 150  
 150 Gamma Ray (cps) 300

-1 CCL 1  
 10 Neutron (cps) 2100



09-05-2013  
 Perforated Interval  
 898.0 - 906.0 25 Perfs  
 2" DML RTG

0 Gamma Ray (cps) 150  
 150 Gamma Ray (cps) 300

-1 CCL 1  
 10 Neutron (cps) 2100