



MIDWEST SURVEYS
 LOGGING - PERFORATING - CONSULTING SERVICES
 P.O. Box 68, Osawatomie, KS 66064
 913 / 755 - 2128

GAMMA RAY / NEUTRON / CCL

File No. Company **RJ Enterprises**

Well **Hill No. - 32**

Field **Bush City Shoestring**

County **Anderson** State **Kansas**

Location **1087' FSL & 2091' FEL**

Other Services **Perforate**

Sec 7 Twp 21s Rge 21e Elevation

Permament Datum **GL** K.B. NA

Log Measured From **GL** D.F. NA

Drilling Measured From **GL** G.L. NA

Date **05-24-2013**

Run Number **One**

Depth Driller **638.0**

Depth Logger **631.2**

Bottom Logged Interval **630.2**

Top Log Interval **20.0**

Fluid Level	Full
Type Fluid	Water
Density / Viscosity	NA
Salinity - PPM Cl	NA
Max Recorded Temp	NA
Estimated Cement Top	0.0
Equipment No.	107
Location	Osawatomie
Recorded By	Steve Windisch
Witnessed By	Jason Kent

BORE-HOLE RECORD		CASING RECORD	
NO.	BIT FROM TO	SIZE	WGT. FROM TO
One	9.875" 0.0 20.0	7.00"	17.0# 0.0 20.0
Two	5.625" 20.0 638.0	2.875"	6.5# 0.0 632.5

<<< Fold Here >>>

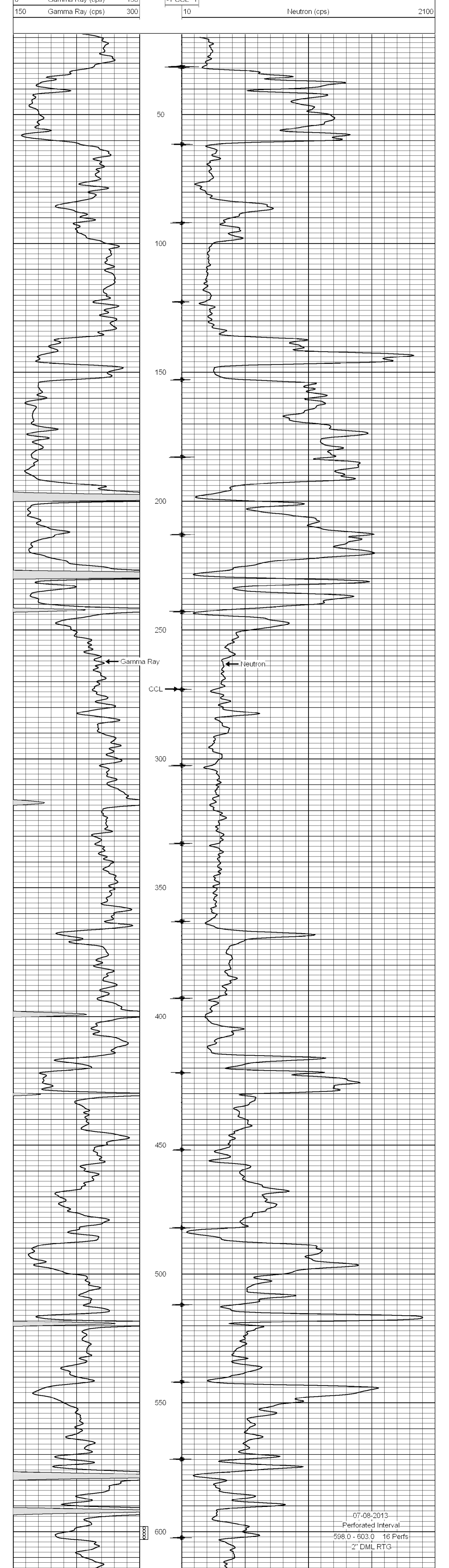
All interpretations are opinions based on inferences from electrical or other measurements and we cannot and do not guarantee the accuracy or correctness of any interpretation, and we shall not, except in the case of gross or willful negligence on our part, be liable or responsible for any loss, costs, damages, or expenses incurred or sustained by anyone resulting from any interpretation made by any of our officers, agents or employees. These interpretations are also subject to our general terms and conditions set out in our current Price Schedule.

Comments

Drilling Contractor :
RJ Enterprises

Database File: hill32.db
 Dataset Pathname: pass1
 Presentation Format: gr-n-ccl
 Dataset Creation: Mon Jun 24 15:03:15 2013 by Log SCH 111116
 Charted by: Depth in Feet scaled 1:240

0	Gamma Ray (cps)	150	-1 CCL 1	10	Neutron (cps)	2100
150	Gamma Ray (cps)	300				



0	Gamma Ray (cps)	150	-1 CCL 1	10	Neutron (cps)	2100
150	Gamma Ray (cps)	300				

07-08-2013
 Perforated Interval
 598.0 - 603.0 16 Perfs
 2" DML RTG