



**MIDWEST SURVEYS**  
 LOGGING - PERFORATING - CONSULTING SERVICES  
 P.O. Box 68, Osawatomie, KS 66064  
 913 / 735 - 2128

**GAMMA RAY / NEUTRON / CCL**

File No. \_\_\_\_\_

Company **RJ Enterprises**

Well **Kent No. 6-1**

Field **Bush City Shoestring**

County **Anderson** State **Kansas**

Location **4681' FSL & 1968' FEL**

Other Services **Perforate**

Sec 18 Twp 21S Rge 21E

Permanent Datum **GL** Elevation **NA**

Log Measured From **GL** K.B. NA

Drilling Measured From **GL** D.F. NA

Date **07-05-2013** Elevation **GL NA**

Run Number **One**

Depth Driller **645.0**

Depth Logger **638.9**

Bottom Logged Interval **637.9**

Top Log Interval **20.0**

Fluid Level **Full**

Type Fluid **Water**

Density / Viscosity **NA**

Salinity - PPM Cl **NA**

Max Recorded Temp **NA**

Estimated Cement Top **0.0**

Equipment No. **107** Location **Osawatimie**

Recorded By **Steve Mandisch**

Witnessed By **Jason Kent**

BOREHOLE RECORD

CASING RECORD

TO

FROM

SIZE

WGHT

FROM

TO

NO

BIT

FROM

TO

ONE

9.875"

0.0

20.0

7.00"

17.0#

0.0

20.0

TWO

5.625"

20.0

645.0

2.875"

6.5#

0.0

640.0

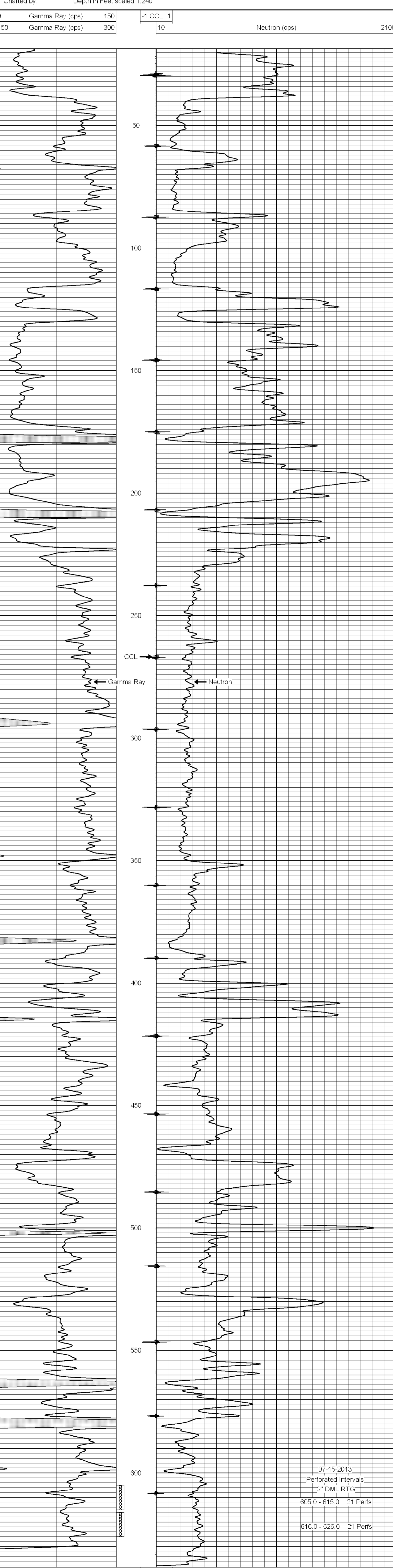
<<< Fold Here >>>

All interpretations are opinions based on inferences from electrical or other measurements and we cannot and do not guarantee the accuracy or correctness of any interpretation, and we shall not, except in the case of gross or willful negligence on our part, be liable or responsible for any loss, costs, damages, or expenses incurred or sustained by anyone resulting from any interpretation made by any of our officers, agents or employees. These interpretations are also subject to our general terms and conditions set out in our current Price Schedule.

Comments

Drilling Contractor :  
RJ Enterprises

Database File: kent6i.db  
 Dataset Pathname: pass1  
 Presentation Format: gr-n-ccl  
 Dataset Creation: Fri Jul 05 15:29:27 2013 by Log SCH 111116  
 Charted by: Depth in Feet scaled 1:240



07-15-2013  
 Perforated Intervals  
 2' DML RTG  
 605.0 - 615.0 21 Perfs  
 616.0 - 626.0 21 Perfs

0 Gamma Ray (cps) 150  
 150 Gamma Ray (cps) 300  
 -1 CCL 1  
 10 Neutron (cps) 2100