



**MIDWEST SURVEYS**  
 LOGGING - PERFORATING - CONSULTING SERVICES  
 P.O. Box 68, Osawatomie, KS 66064  
 913 / 755 - 2128

**GAMMA RAY / NEUTRON / CCL**

File No. \_\_\_\_\_

Company **RJ Enterprises**

Well **Hill No. 4-1**

Field **Bush City Shoestring**

County **Anderson**

State **Kansas**

Location **4344 FSL & 3514' FEL**

Other Services **Perforate**

Sec. **18** Twp. **21s** Rge. **21e**

Permanent Datum **GL**

Log Measured From **GL**

Drilling Measured From **GL**

Elevation **NA**

K.B. **NA**

D.F. **NA**

G.L. **NA**

Date **07-05-2013**

Run Number **One**

Depth Driller **665.0**

Depth Logger **658.8**

Bottom Logged Interval **657.8**

Top Log Interval **20.0**

Fluid Level **Full**

Type Fluid **Water**

Density / Viscosity **NA**

Salinity - PPM Cl **NA**

Equipment No.	Location
107	Osawatomie
Recorded By	Steve Wandsch
Witnessed By	Jason Kent

BOREHOLE RECORD		CASINGS RECORD			
Run No.	BIT	FROM	TO	FROM	TO
One	9.875"	0.0	20.0	0.0	20.0
Two	5.625"	20.0	665.0	0.0	659.0

Size 7.00"  
 Wgt 17.0 #  
 Length 2.875'  
 Weight 6.5 #

API # 15-003-25,869

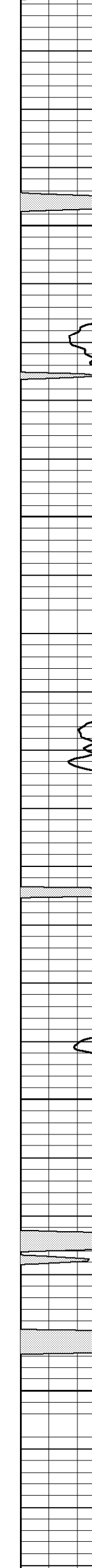
<<< Fold Here >>>

All interpretations are opinions based on inferences from electrical or other measurements and we cannot and do not guarantee the accuracy or correctness of any interpretation, and we shall not, except in the case of gross or willful negligence on our part, be liable or responsible for any loss, costs, damages, or expenses incurred or sustained by anyone resulting from any interpretation made by any of our officers, agents or employees. These interpretations are also subject to our general terms and conditions set out in our current Price Schedule.

Comments

Drilling Contractor :  
 RJ Enterprises

Database File: hill4i.db  
 Dataset Pathname: pass1  
 Presentation Format: gr-n-ccl  
 Dataset Creation: Fri Jul 05 12:17:02 2013 by Log SCH 111116  
 Charted by: Depth in Feet scaled 1:240



0 Gamma Ray (cps) 150  
 150 Gamma Ray (cps) 300

10 Neutron (cps) 2100

07-15-2013  
 Perforated Intervals  
 2" DML RTG  
 627.0 - 637.0 21 Perfs  
 638.0 - 648.0 21 Perfs