



**GAMMA RAY
NEUTRON
COMPLETION LOG**

Company TOWN OIL COMPANY, INC.
Well WEST ROGERS - AIKENS #100
Field LOUISBURG
County MIAMI
State KANSAS

Location: 4725' FSL & 3750' FEL
SW NW NE NW
SEC 4 TWP 17S RGE 25E
Elevation 1056 EST
Other Services

Permanent Datum
Log Measured From
Drilling Measured From
Elevation
Date
Run Number
Depth Diller
Depth Logger

Top Log Interval
Bottom Logged Interval
Fluid Level

Type Fluid
Production Casing
Max. Recorded Temp.
Estimated Cement Top
Calculated Cement Top
Amount & Type Cement
Amount & Type Admix
Drilling Contractor
Equipment Number
Location
Recorded By
Witnessed By

WATER
2 7/8" @ TD @
HALL, R
TOWN, L.

<<< Fold Here >>>

All interpretations are opinions based on inferences from electrical or other measurements and we cannot and do not guarantee the accuracy or correctness of any interpretation, and we shall not, except in the case of gross or willful negligence on our part, be liable or responsible for any loss, costs, damages, or expenses incurred or sustained by anyone resulting from any interpretation made by any of our officers, agents or employees. These interpretations are also subject to our general terms and conditions set out in our current Price Schedule.

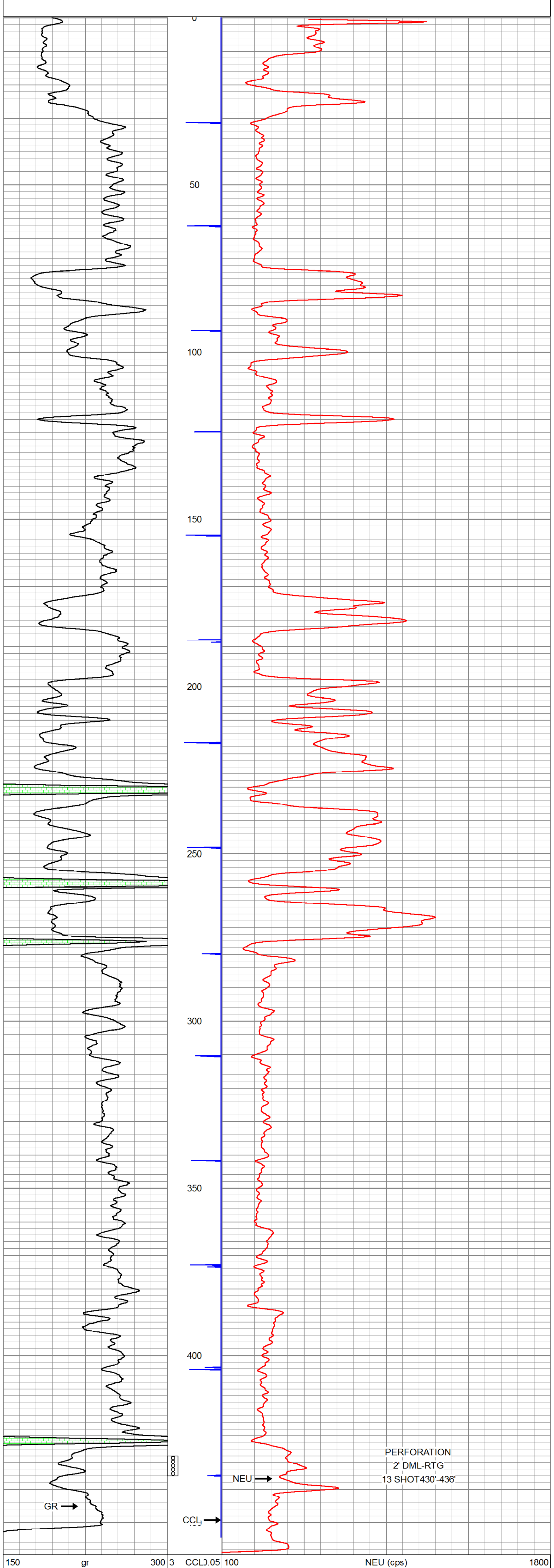
Comments

THANK YOU

Sensor	Offset (ft)	Schematic	Description	Len (ft)	OD (in)	Wt (lb)
GR	7.59		GR-TITAN_169 (TIT169_001) Titan 1 11/16" Gamma Ray	4.75	1.69	20.00
CCL	5.05		CCL-TITAN_169 (TIT169) Titan 1 11/16" Logging CCL	1.83	1.69	7.50
NEU	0.63		NEU-TITAN (TIT801) TITAN 1 11/16" Neutron	4.33	1.69	25.00

Dataset: rogers-aikens # 100.db: field/well/run1/pass1
Total Length: 10.92 ft
Total Weight: 52.50 lb
O.D. 1.69 in

Database File: e:\rogers-aikens # 100.db
Dataset Pathname: pass1
Presentation Format: gr-n-ccl
Dataset Creation: Tue Aug 20 10:55:32 2013 by Log Std Casedhole 09061
Charted by: Depth in Feet scaled 1:240



Sensor	Offset (ft)	Schematic	Description	Len (ft)	OD (in)	Wt (lb)
gr	300	3	CCL.05	100	NEU (cps)	1800
GR	0	150				



Company TOWN OIL COMPANY, INC.
Well WEST ROGERS - AIKENS #100
Field LOUISBURG
County MIAMI SEC. 4 TWP. 17S RGE. 25E
State KANSAS Date 8-20-13