



**GAMMA RAY  
CEMENT BOND  
COMPLETION LOG**

Company	POSTROCK ENERGY CORP.	Location:	2440' FSL & 890' FWL NW/NE NW SW	Other Services	OPEN HOLE 6-02-2013
Well	GROSDIDIER, FRANCIS E. #14-1	APR # :	15-133-27655-00-00		
Field	CHEROKEE BASIN CBM	County	NEOSHO	State	KANSAS
County	NEOSHO	Permament Datum	GL	Elevation	923'
State	KANSAS	Log Measured From	GL	K.B. D.L.	GL 923'
		Drilling Measured From	GL		
Date	5-09-2013	SEC 14	TWP 28S	RGE 20E	
Run Number	2 MW				
Depth Driller	631'				
Depth Logger	624.3'				
Top Log Interval	0				
Bottom Logged Interval	619.3'				
Fluid Level	FULL				
Type Fluid	WATER				
Production Casing	5 5/8" @ TD				
Max. Recorded Temp.					
Estimated Cement Top					
Calculated Cement Top					
Amount & Type Cement					
Drilling Contractor					
Equipment Number	105				
Location	GORMLEY, R				
Recorded By	HAYS, R				
Witnessed By					

<<< Fold Here >>>

All interpretations are opinions based on inferences from electrical or other measurements and we cannot and do not guarantee the accuracy or correctness of any interpretation, and we shall not, except in the case of gross or willful negligence on our part, be liable or responsible for any loss, costs, damages, or expenses incurred or sustained by anyone resulting from any interpretation made by any of our officers, agents or employees. These interpretations are also subject to our general terms and conditions set out in our current Price Schedule.

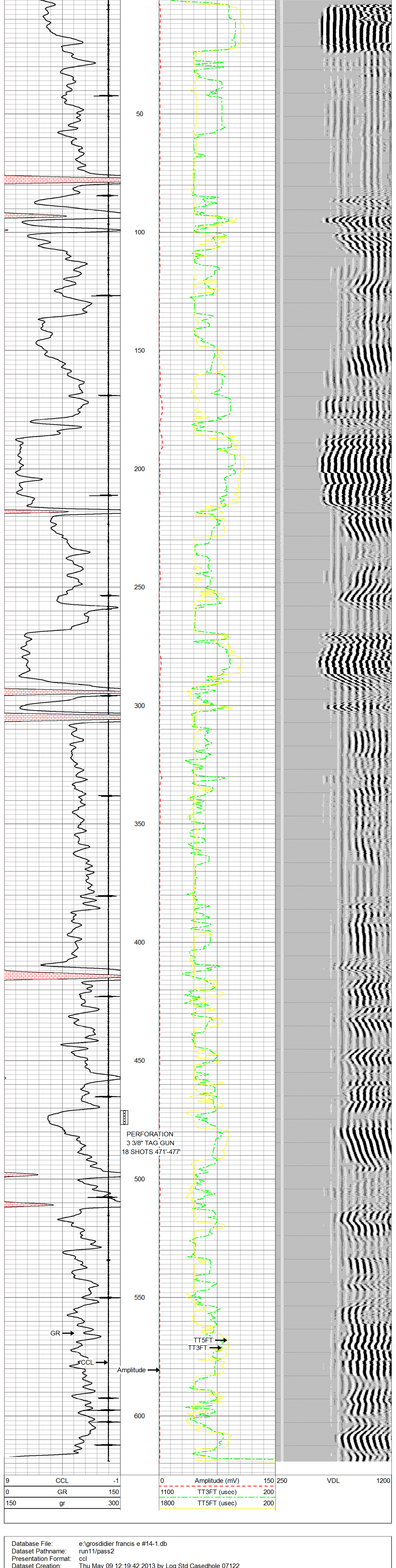
Comments

THANK YOU

Sensor	Offset (ft)	Schematic	Description	Len (ft)	OD (in)	Wt (lb)
			tekco tekco cent.	2.17	1.69	5.00
WVF3FT	6.58		CBLTEKCO-TEKCO2RCVR (TEKCO169) 1 11/16" TEKCO 2 RCVR DELWARE	9.75	1.69	50.00
WVF5FT	5.58					
WVFCAL	2.17					
WVFSYNC	2.17		tekco tekco cent.	2.17	1.69	5.00

Dataset: grosdidier francis e #14-1.db: field/well/run1/pass2MERGE  
 Total Length: 14.08 ft  
 Total Weight: 60.00 lb  
 O.D.: 1.69 in

Database File: e:\grosdidier francis e #14-1.db  
 Dataset Pathname: pass2MERGE  
 Presentation Format: scl\_dr  
 Dataset Creation: Thu May 09 12:09:08 2013  
 Charted by: Depth in Feet scaled 1:240



Database File: e:\grosdidier francis e #14-1.db  
 Dataset Pathname: run11/pass2  
 Presentation Format: ccl  
 Dataset Creation: Thu May 09 12:19:42 2013 by Log Std Casedhole 07122  
 Charted by: Depth in Feet scaled 1:240

