

**GAMMA RAY
CEMENT BOND
COMPLETION LOG**

Company: **POSTROCK ENERGY CORP.**
Well: **OLSON, RUBY A. #2-14**
Field: **CHEROKEE BASIN CBM**

County: **WILSON** State: **KANSAS**

Location: **325' F91 & 1823' F91
SE SW SE SW**
APR #: **15-205-28145-00-00**
OPEN HOLE
5-10-2013

Company: **POSTROCK ENERGY CORP.**
Well: **OLSON, RUBY A. #2-14**
Field: **CHEROKEE BASIN CBM**
County: **WILSON** State: **KANSAS**

Permanent Datum: **GL** Elevation: **1046'**
Log Measured From: **GL** Elevation: **1046'**
Drilling Measured From: **GL** Elevation: **1046'**

Date: **5-17-2013**
Run Number: **11NW**
Depth Chir: **1220'**
Top Log Interval: **1204.5'**

Bottom Logged Interval: **1119.4'**
Fluid Level: **FULL**

Type Fluid: **WATER**
Production Casing: **5.5" @ 10"**
Max. Recorded Temp.: **93**

Estimated Cement Top: **93**
Amount & Type Cement: **93**
Drilling Contractor: **105**
Equipment Number: **105**
Location: **105**
Recorded By: **GOSMLEY, R.**
Witnessed By: **HAYS, R.**

<<< Fold Here >>>

All interpretations are opinions based on inferences from electrical or other measurements and we cannot and do not guarantee the accuracy or correctness of any interpretation, and we shall not, except in the case of gross or willful negligence on our part, be liable or responsible for any loss, costs, damages, or expenses incurred or sustained by anyone resulting from any interpretation made by any of our officers, agents or employees. These interpretations are also subject to our general terms and conditions set out in our current Price Schedule.

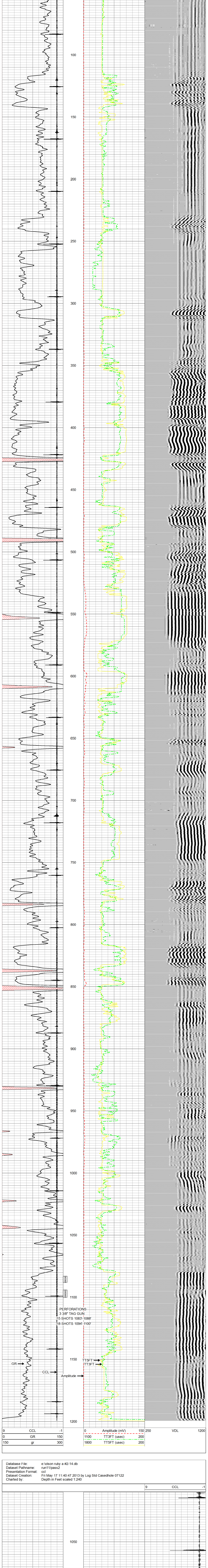
Comments: **THANK YOU**

Sensor	Offset (ft)	Schematic	Description	Len (ft)	OD (in)	Wt (lb)
tekco			tekco cent.	2.17	1.69	5.00
WVF3FT	6.58		CBLTEKCO-TEKCO2RCVR (TEKCO169) 1 11/16" TEKCO 2 RCVR DELWARE	9.75	1.69	50.00
WVF5FT	5.58					
WVFCAL	2.17					
WVFSYNC	2.17		tekco cent.	2.17	1.69	5.00

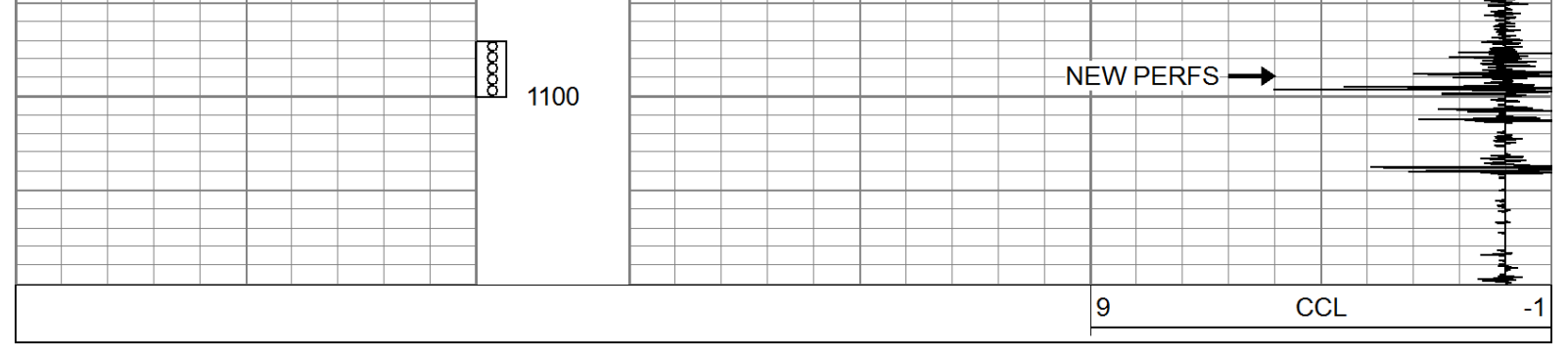
Dataset: olson ruby a #2-14.db: field/well/run/1/pass2MERGE
Total Length: 14.03 ft
Total Weight: 60.00 lb
O.D.: 1.69 in

Database File: e:\olson ruby a #2-14.db
Presentation Pathname: pass2MERGE
Dataset Format: scbl_dr
Dataset Creation: Fri May 17 11:17:29 2013
Charted by: Depth in Feet scaled 1.240

9	CCL	-1	0	Amplitude (mV)	150	250	VDL	1200
0	GR	150	1100	TT3FT (usec)	200	200		
150	gr	300	1800	TT5FT (usec)	200	200		



Database File: e:\olson ruby a #2-14.db
Presentation Pathname: run11/pass2
Dataset Format: ccl
Dataset Creation: Fri May 17 11:40:47 2013 by Log Std Casedhole 07122
Charted by: Depth in Feet scaled 1.240



Company: **POSTROCK ENERGY CORP.**
Well: **OLSON, RUBY A. #2-14**
Field: **CHEROKEE BASIN CBM**
County: **WILSON SECTION 2 TWP 28S RGE 16E**
State: **KANSAS** Date: **5-17-2013**