



Sonic Cement Bond Log

Pioneer Energy Services

API No.

15-081-22024-0000

Company Western Pacific Farms, Inc.

Well Longwood No.2

Field Hugoton

County Haskell State Kansas

Location

1100' FSL & 1250' FEL

Other Services
Preforate
Gas Gun

Sec: 18 Twp: 28S Rge: 31W

Elevation

K.B. 2944

D.F. 2932

G.L. 2932

Permanent Datum Ground Level Elevation 2932

Log Measured From Ground Level 0 Ft. Above Perm. Datum

Drilling Measured From Kelly Bushing

Run Number

One

Date Survey 07/15/2013

Date Cementing 07/07/2013

Type Cementing Operation Primary

Depth Driller 2817

Depth Logger 2794

Logged Interval 2793 to 0

Casing Driller 5.5 @ TD

Float Collar -- D.V. Tool // // @

Squeeze Depth // //

Amount & Type Cement // //

Amount & Type Admix // //

Type Fluid In Hole Water

Fluid Level Full

Salinity PPM Cl // //

Weight lb/gal -- Vis. // //

Approx. Logged Cement Top Surface

Calculated Cement Top // //

Max. Hole Temperature // //

Tool No. RBT 2-2

Spacing Recorded 3-5

Equipment -- Location 5 Pratt

Recorded By J. Smith

Witnessed By P. Withers

<<< Fold Here >>>

All interpretations are opinions based on inferences from electrical or other measurements and we cannot and do not guarantee the accuracy or correctness of any interpretation, and we shall not, except in the case of gross or willful negligence on our part, be liable or responsible for any loss, costs, damages, or expenses incurred or sustained by anyone resulting from any interpretation made by any of our officers, agents or employees. These interpretations are also subject to our general terms and conditions set out in our current Price Schedule.

Comments

Thank you for using Pioneer Energy Services
(620) 672-8300

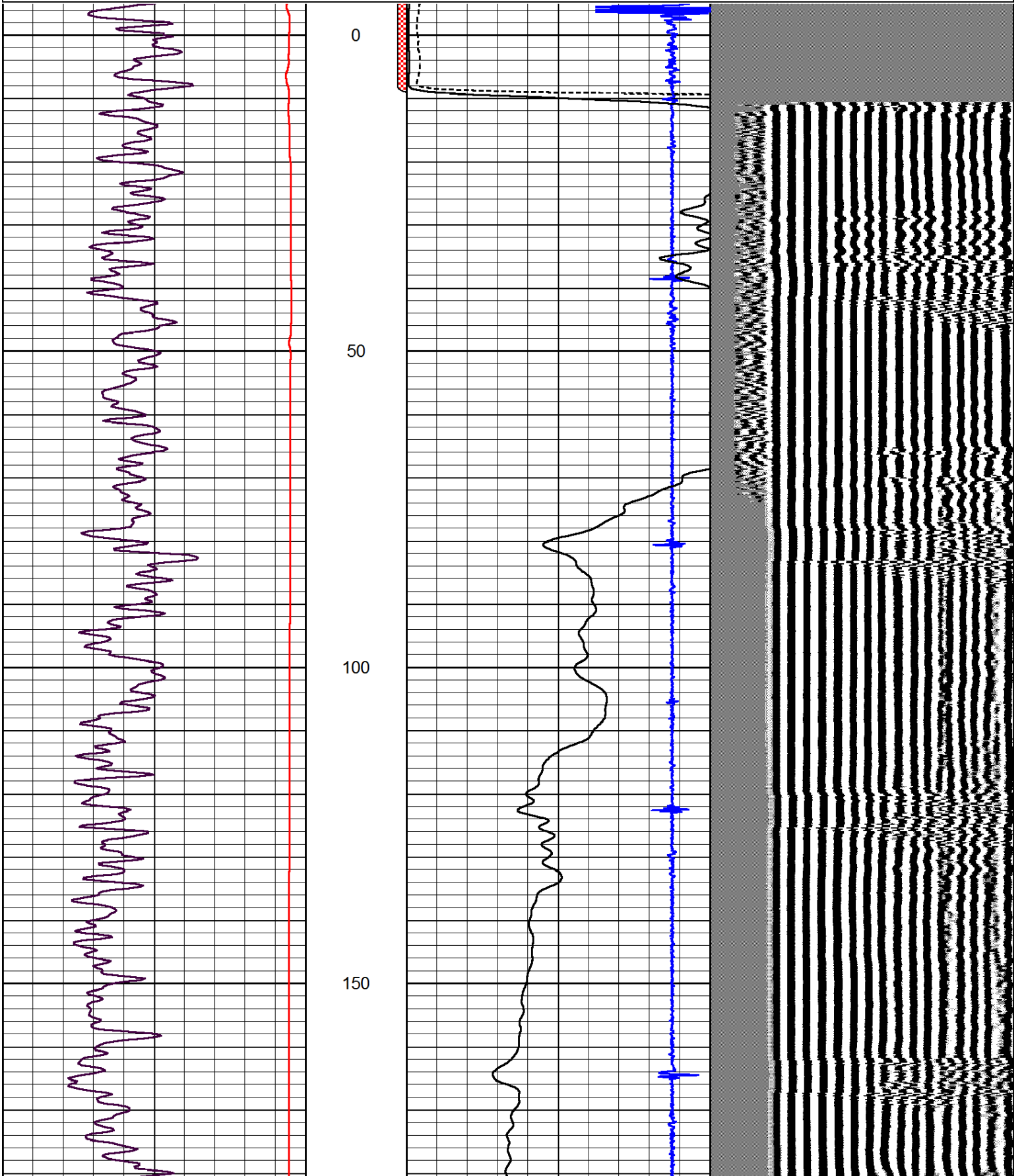
Copeland Kansas,
5 SW on Hwy 56 to " UU " Rd.
6 North to 100Th Rd.
1.4 West and North Into.

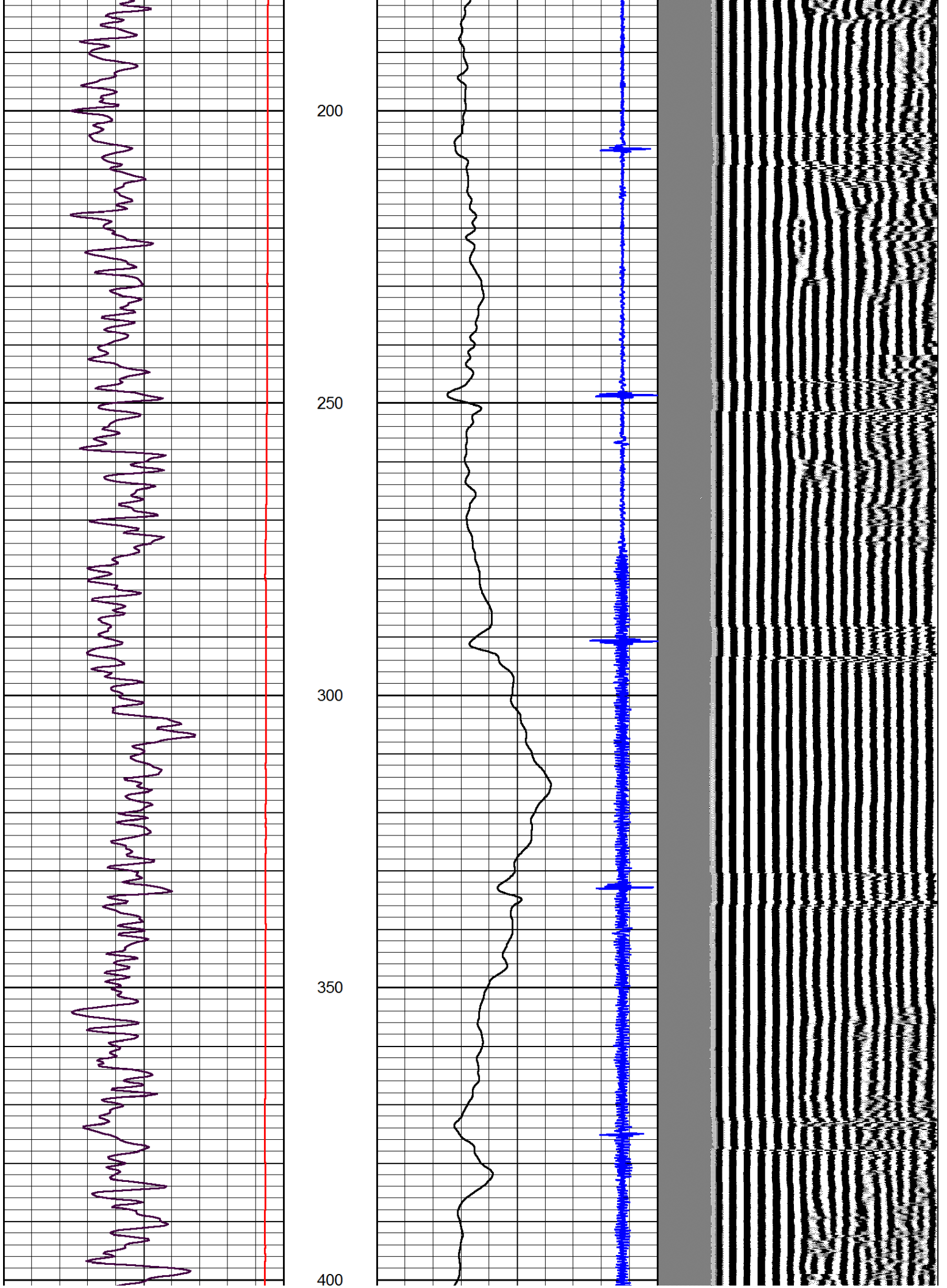


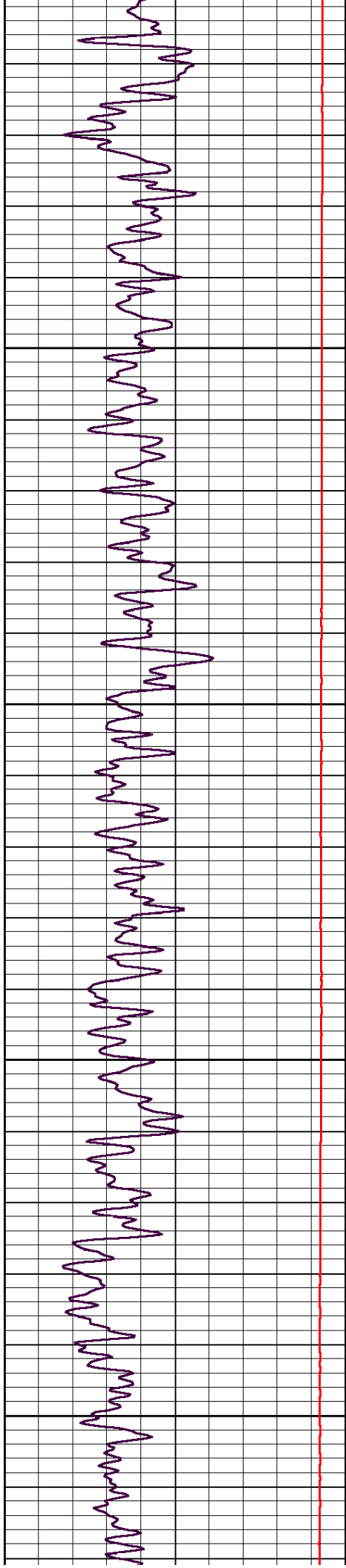
Main Pass

Database File: westernpacificfarms-longwood-no-2.db
 Dataset Pathname: grcbl/pass5
 Presentation Format: cblcr
 Dataset Creation: Mon Jul 15 08:34:34 2013 by Log 7.0 B1
 Charted by: Depth in Feet scaled 1:240

0	Gamma Ray	150	amp3ft	35	Casing Collars	-5	200	wvf5ft	1200
			(mV)	0	Amplified Amplitude (mV)	100			
			-100 10	0	Pipe Amplitude (mV)	20			





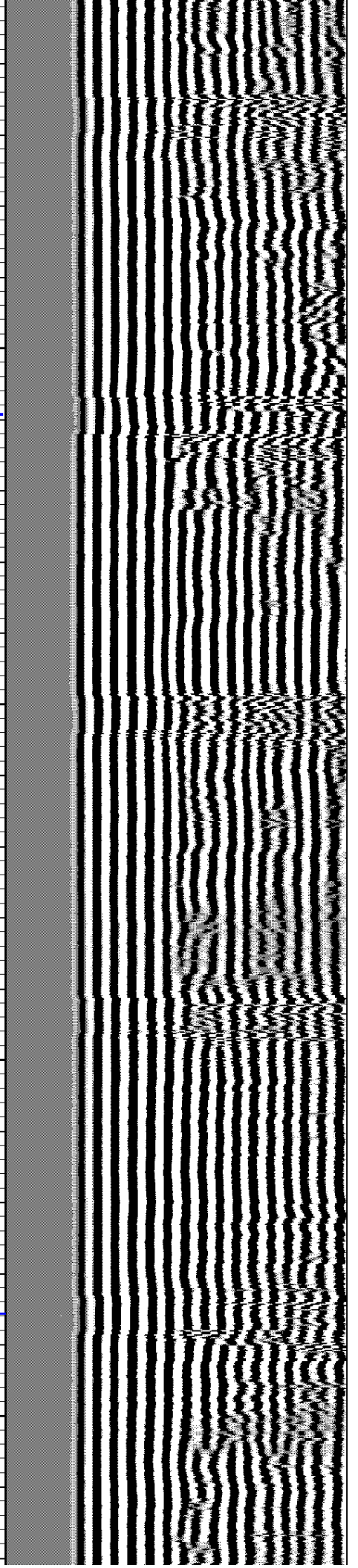
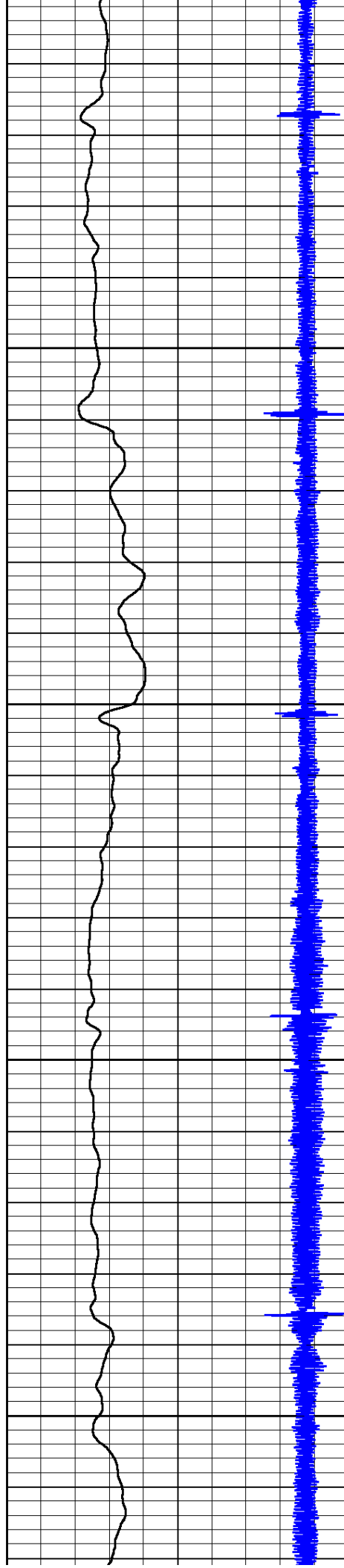


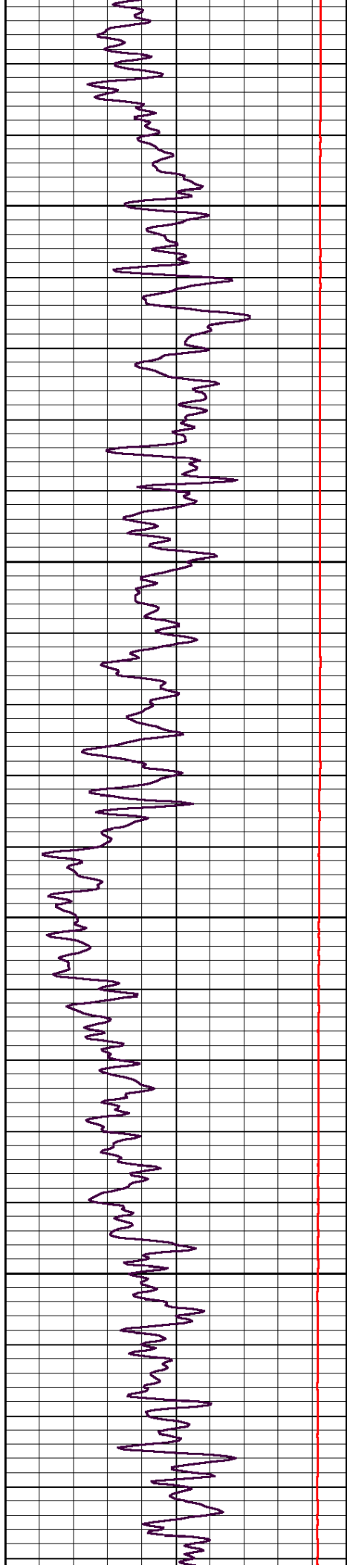
450

500

550

600



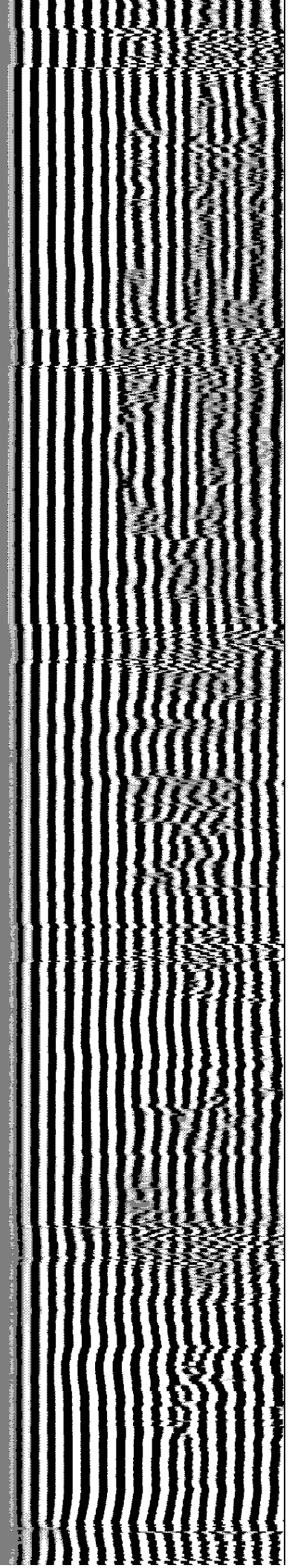
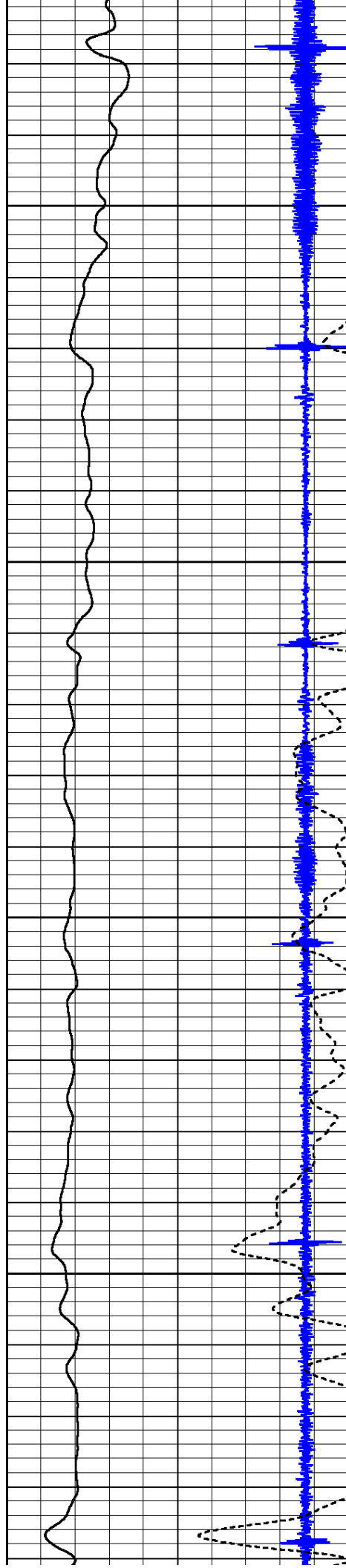


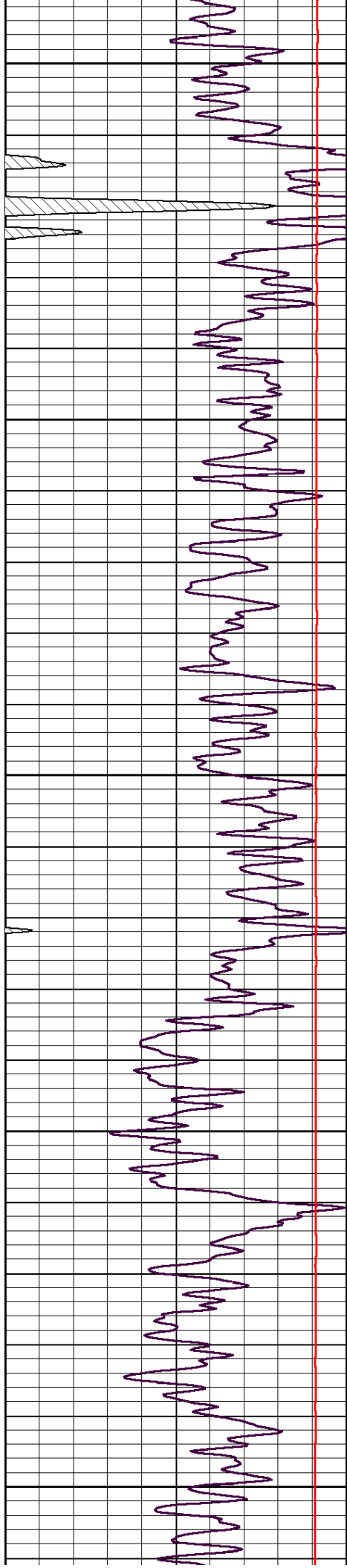
650

700

750

800





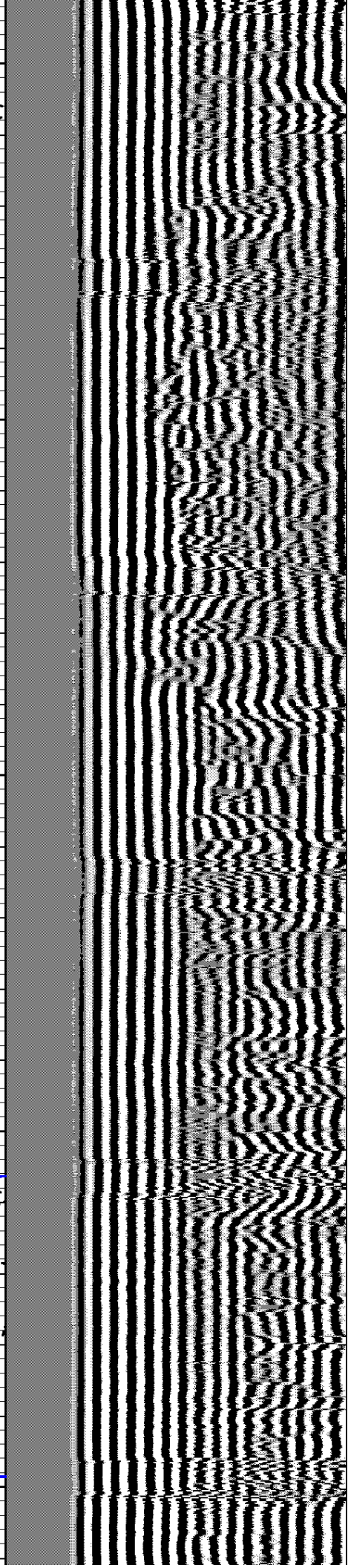
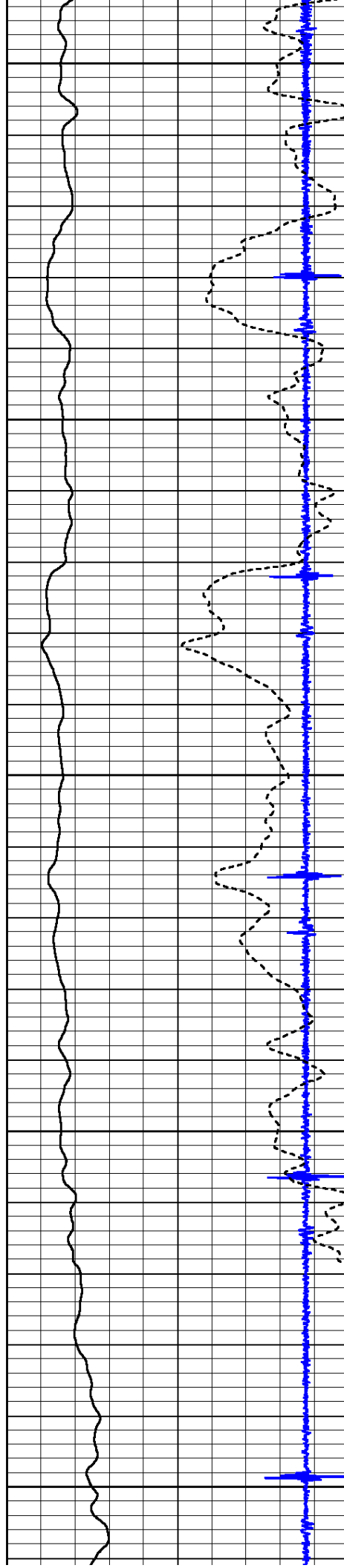
850

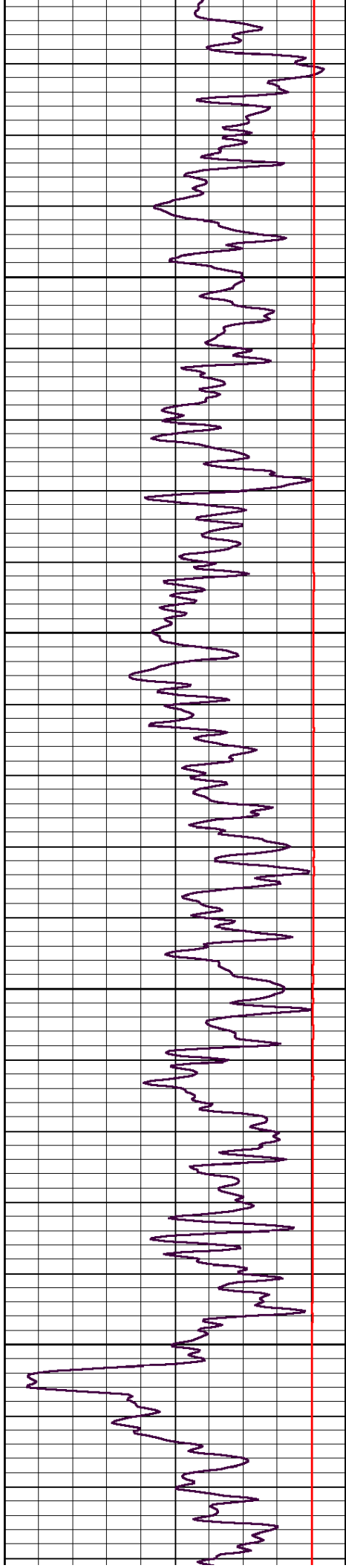
900

950

1000

1050



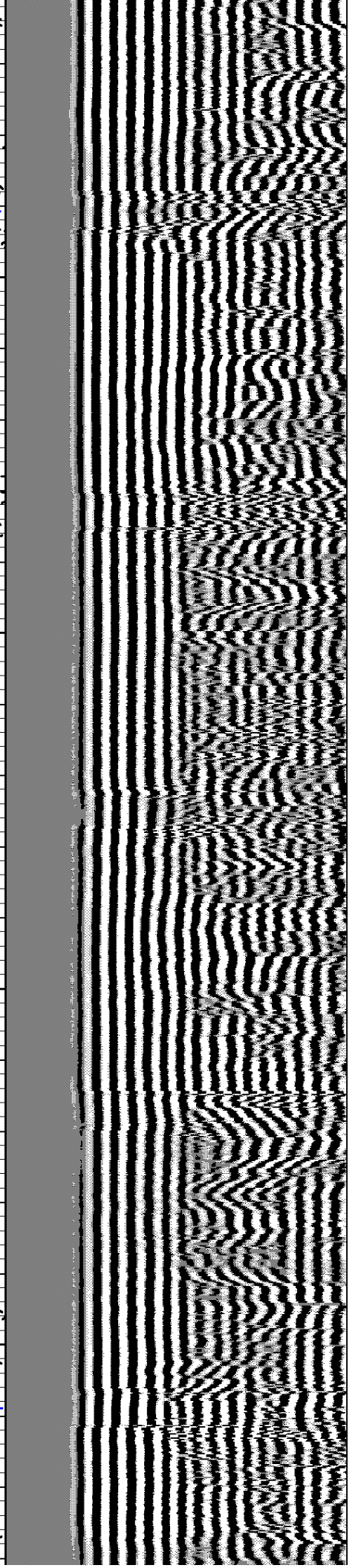
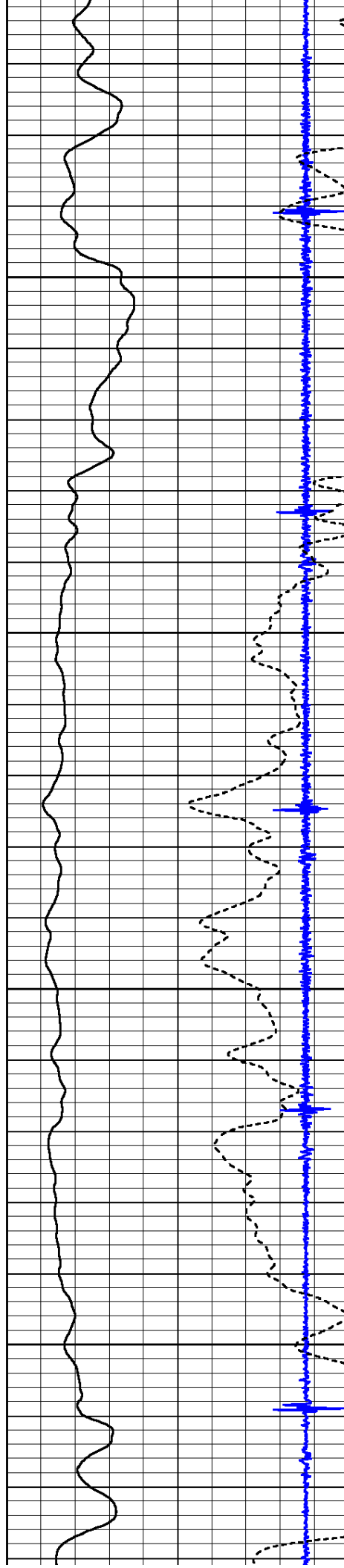


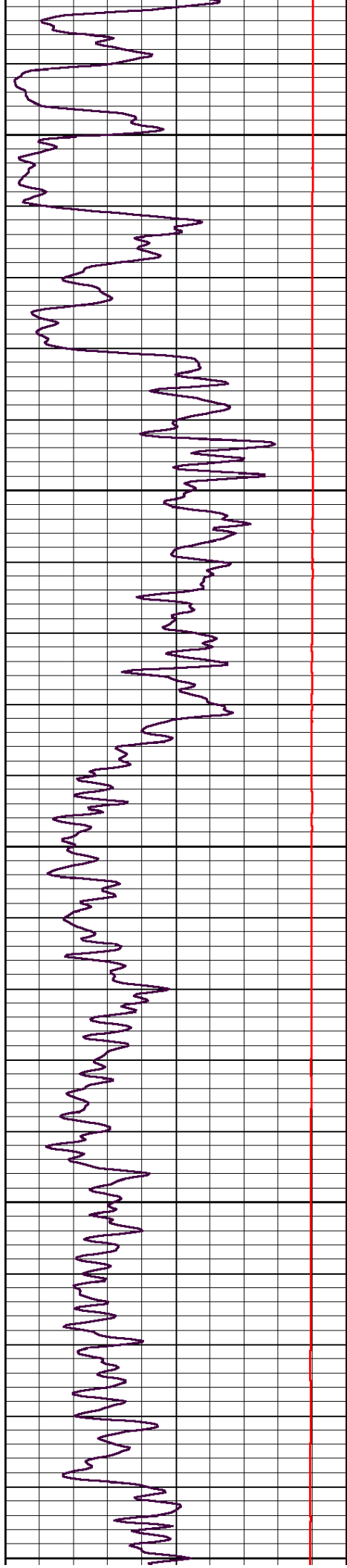
1100

1150

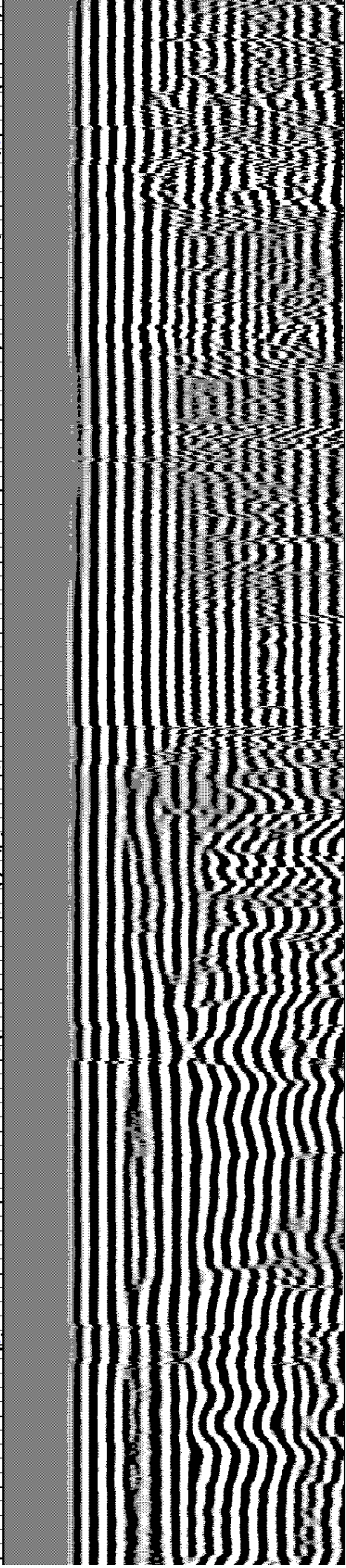
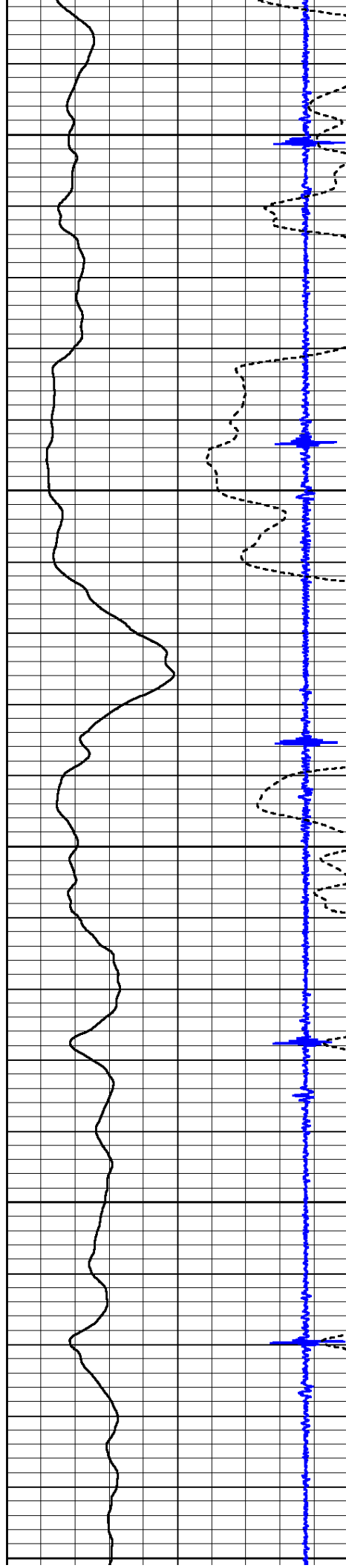
1200

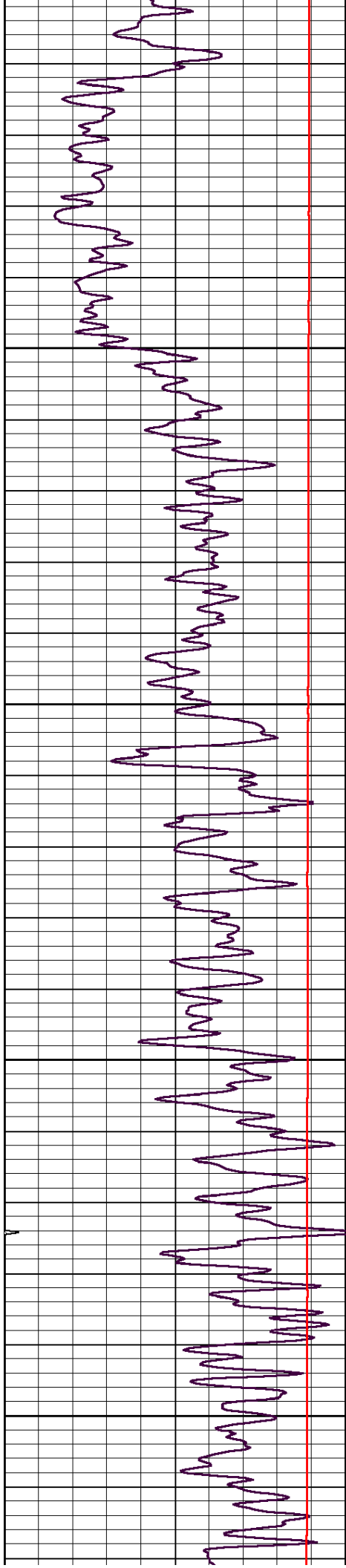
1250





1300
1350
1400
1450
1500



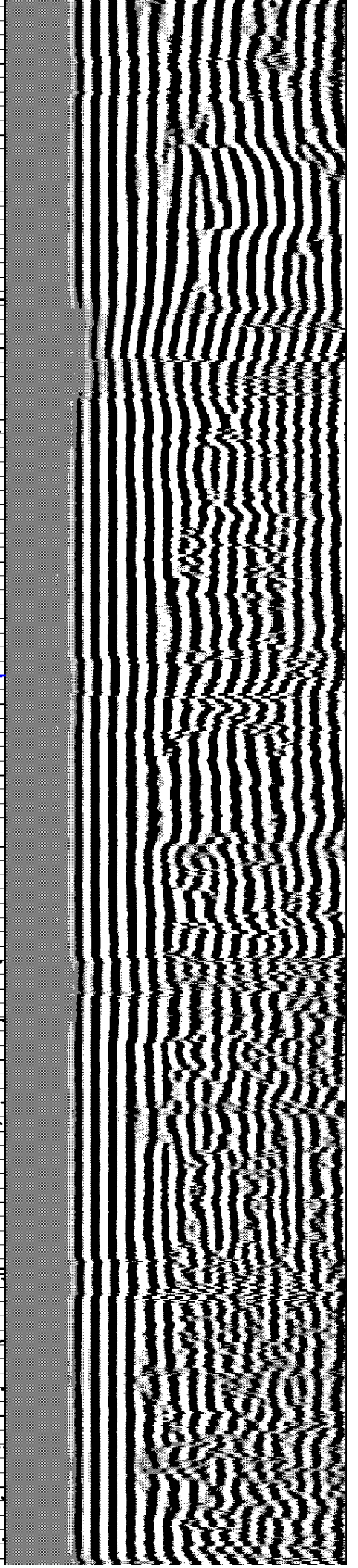
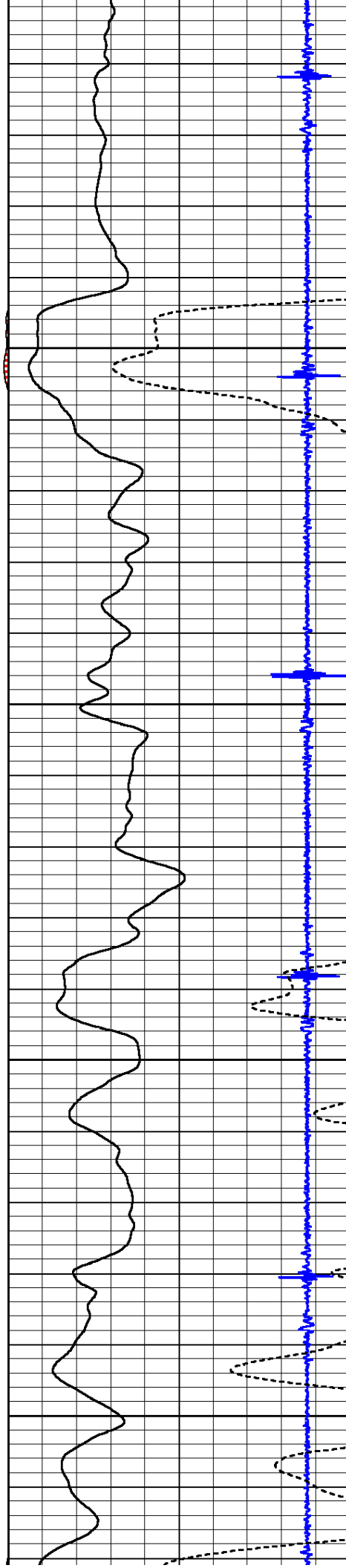


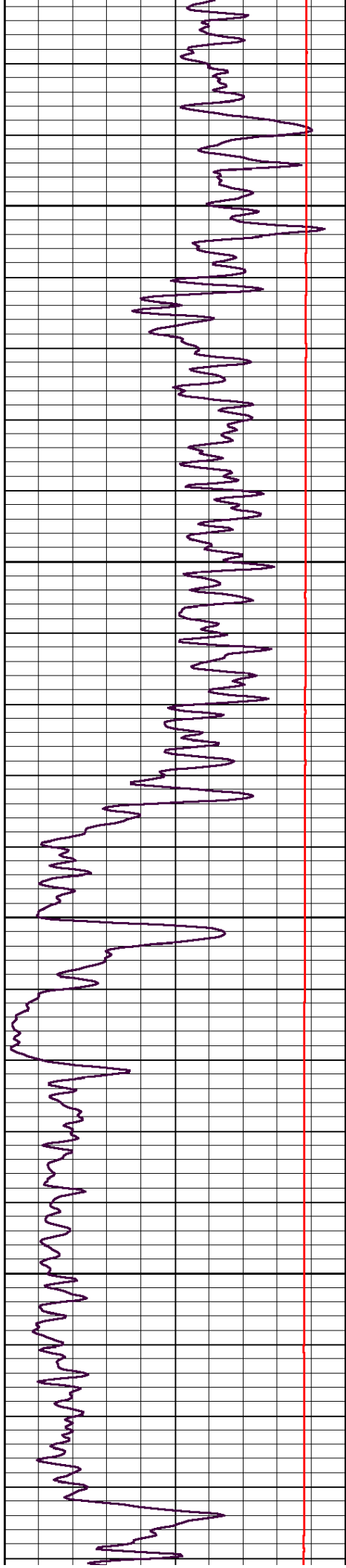
1550

1600

1650

1700



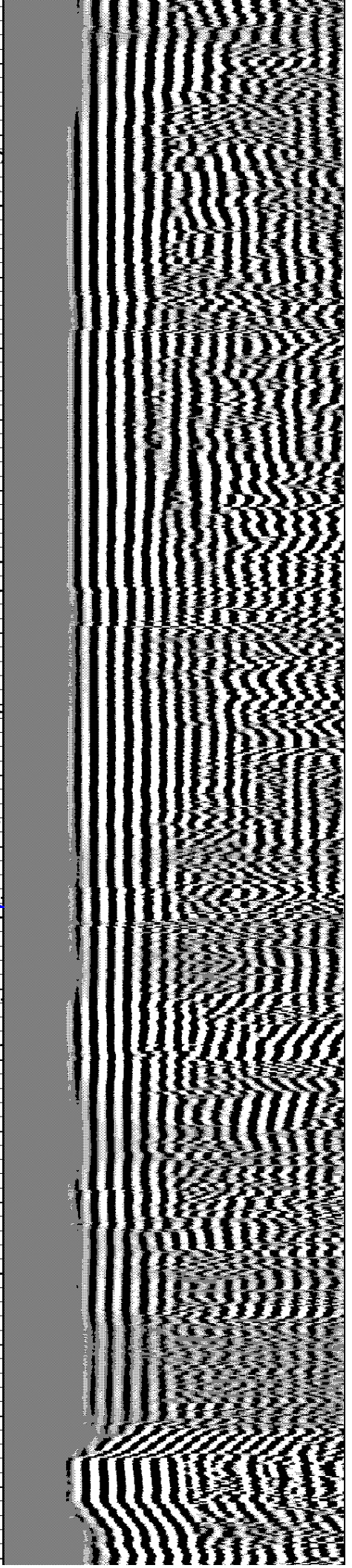
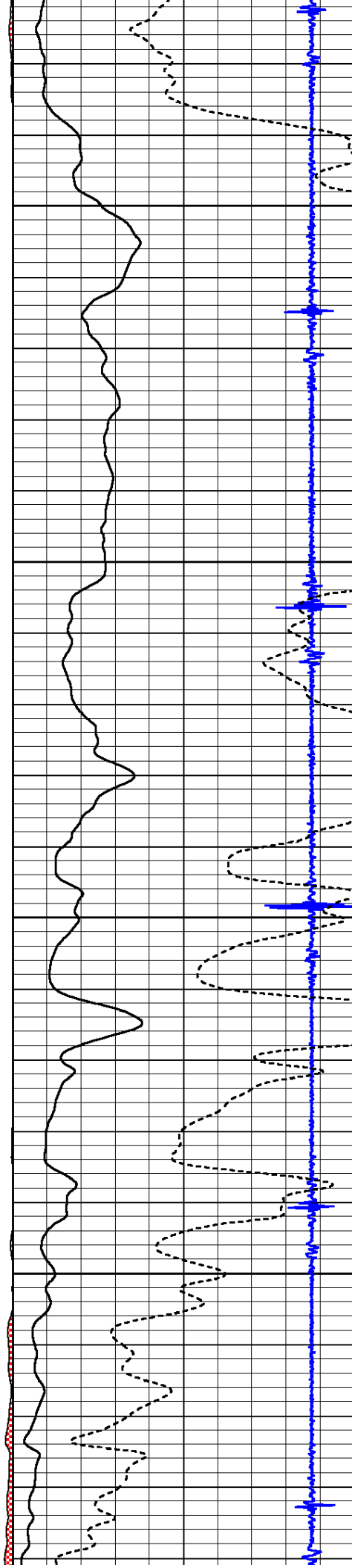


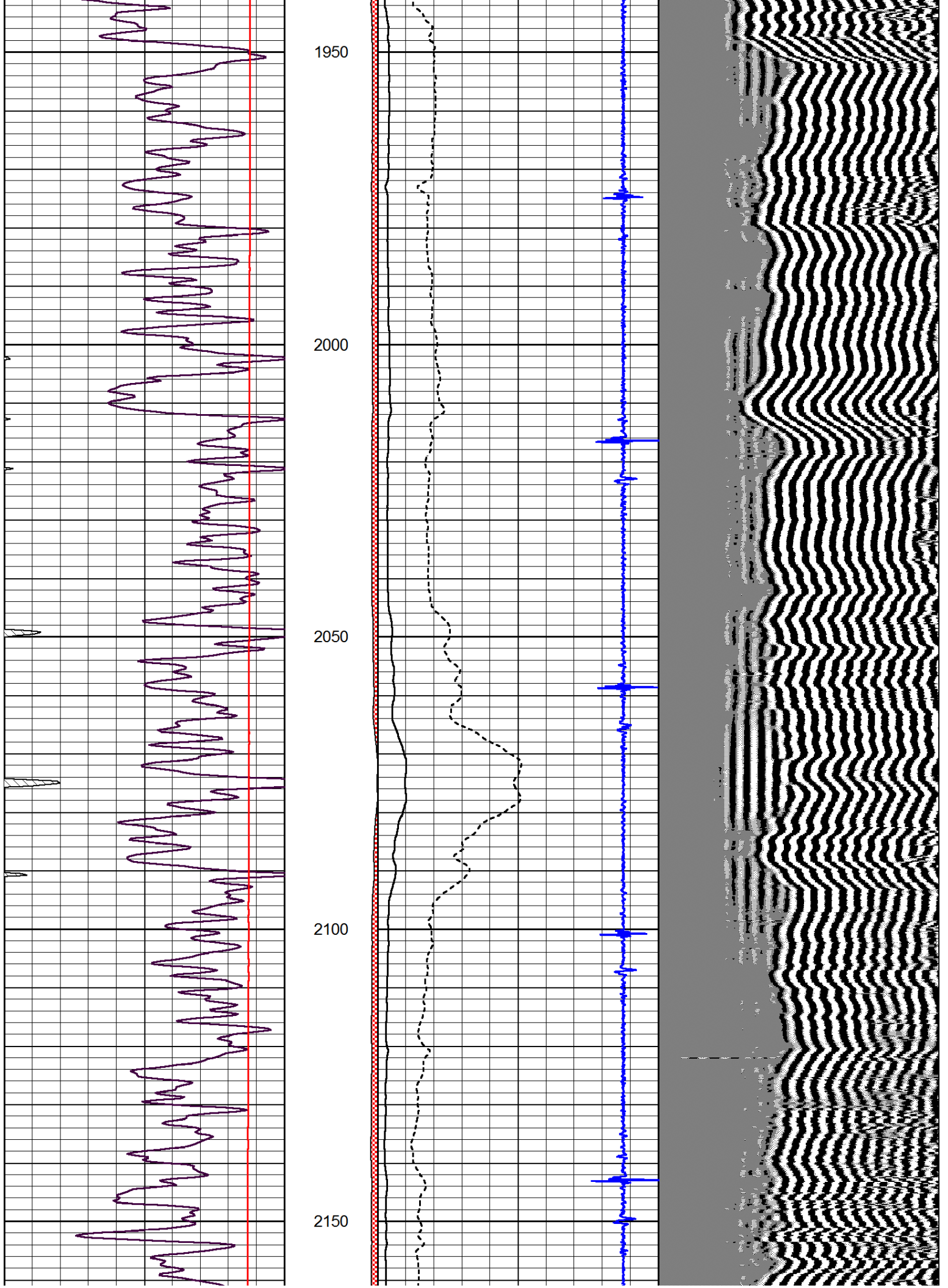
1750

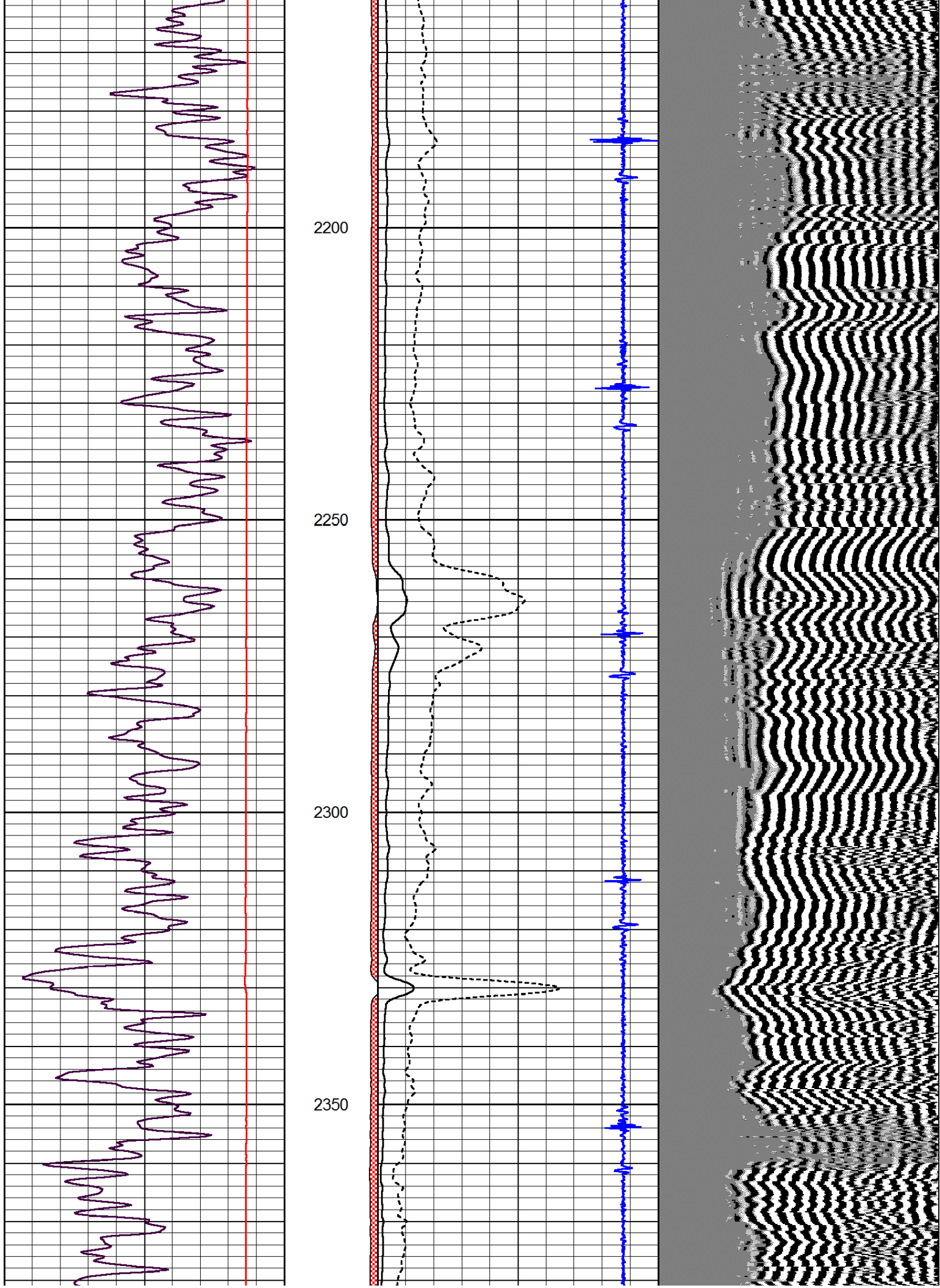
1800

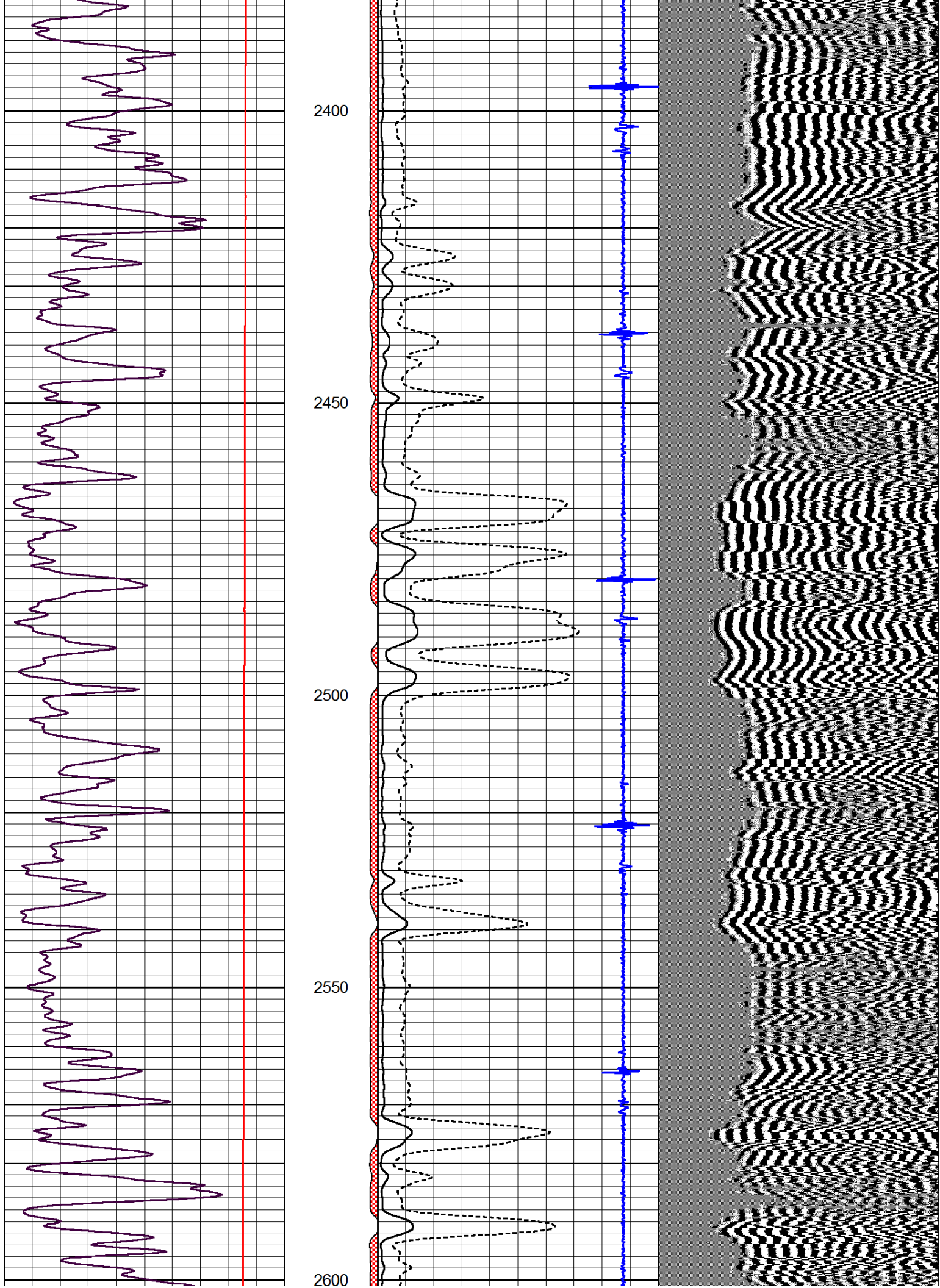
1850

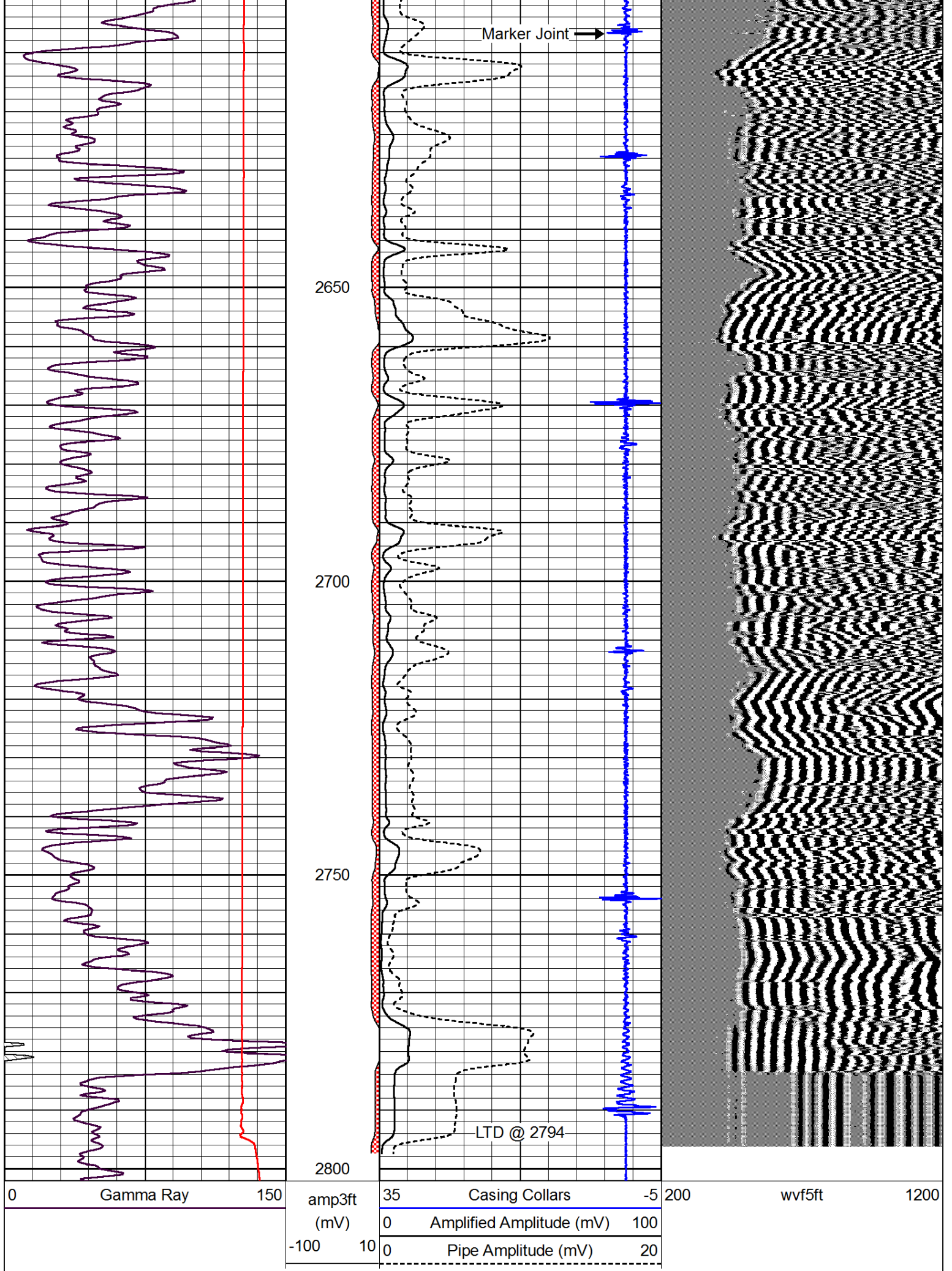
1900











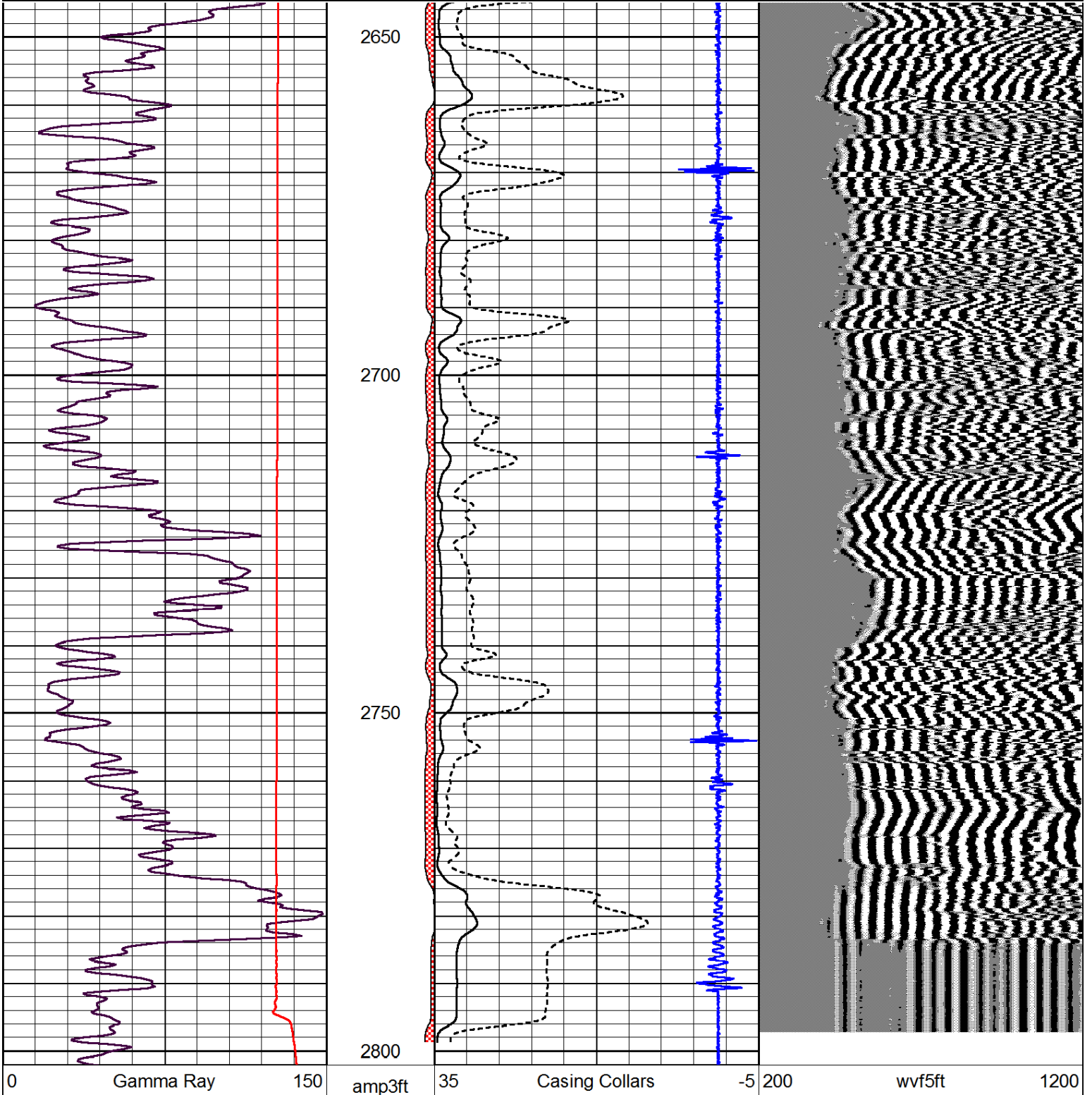


Pioneer Energy Services

Repeat Section

Database File: westernpacificfarms-longwood-no-2.db
Dataset Pathname: grcbl/pass4
Presentation Format: cbldr
Dataset Creation: Mon Jul 15 08:30:22 2013 by Log 7.0 B1
Charted by: Depth in Feet scaled 1:240

0	Gamma Ray	150	amp3ft	35	Casing Collars	-5	200	wvf5ft	1200
			(mV)	0	Amplified Amplitude (mV)	100			
			-100	10	Pipe Amplitude (mV)	20			



(mV)	0	Amplified Amplitude (mV)	100
-100	10	0	Pipe Amplitude (mV) 20
<hr style="border-top: 1px dashed black;"/>			