



MIDWEST SURVEYS
 LOGGING - PERFORATING - CONSULTING SERVICES
 P.O. Box 66, Osawatomie, KS 66064
 913 / 755 - 2128

GAMMA RAY / NEUTRON / CCL

File No. Company Hughes Drilling, Company
 Well Flynn No. I-2
 Field Baldwin
 County Franklin State Kansas

Location 880' FSL & 2200' FEL
 SE-NW-SW-SE
 Sec. 24 Twp. 15S Rge. 20E
 Permanent Datum GL Elevation 1077'
 Log Measured From GL
 Drilling Measured From GL

Date 03-06-2013
 Run Number One
 Depth Driller 890.0
 Depth Logger 847.3
 Bottom Logged Interval 846.3
 Top Log Interval 20.0
 Fluid Level Full

Type Fluid Water
 Density / Viscosity NA
 Salinity - PPM Cl NA
 Max Recorded Temp NA
 Estimated Cement Top 0.0
 Equipment No. 102 Location Osawatomie
 Recorded By Gary Windisch
 Witnessed By Gary Hughes

BORE-HOLE RECORD				CASING RECORD			
Run No.	BIT	FROM	TO	SIZE	WGT.	FROM	TO
One	11 625"	0.0	40.0	7.00"	17.0 #	0.0	40.0
Two	5.925"	40.0	890.0	2.875"	6.5 #	0.0	881.0
				Boat	Set	At	630.0

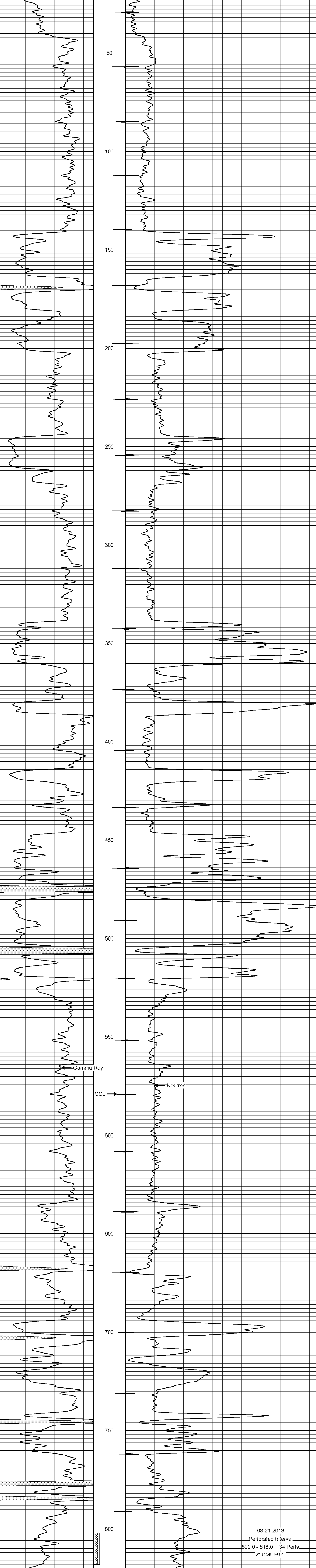
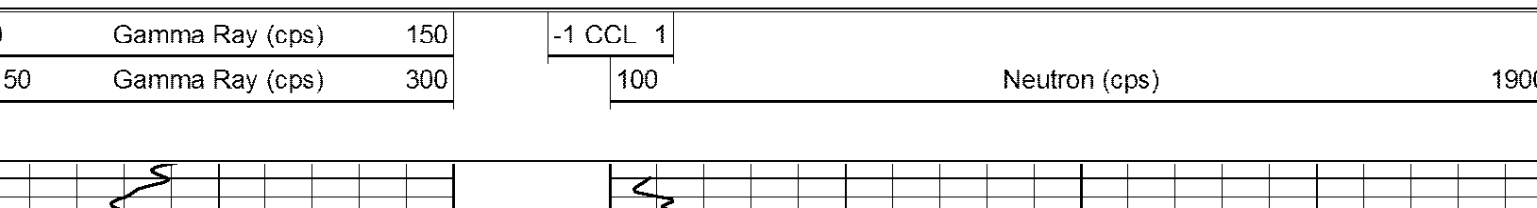
<<< Fold Here >>>

All interpretations are opinions based on inferences from electrical or other measurements and we cannot and do not guarantee the accuracy or correctness of any interpretation, and we shall not, except in the case of gross or willful negligence on our part, be liable or responsible for any loss, costs, damages, or expenses incurred or sustained by anyone resulting from any interpretation made by any of our officers, agents or employees. These interpretations are also subject to our general terms and conditions set out in our current Price Schedule.

Comments

Drilling Contractor :
 Hughes Drilling, Company

Database File: flynn2i.db
 Dataset Pathname: pass1
 Presentation Format: gr-n-ccl
 Dataset Creation: Tue Aug 06 15:13:53 2013 by Log SCH 111116
 Charted by: Depth in Feet scaled 1:240



08-21-2013
 Perforated Interval
 802.0 - 818.0 34 Perfs.
 2" DML RTG

