



**GAMMA RAY
CEMENT BOND
COMPLETION LOG**

Company: **POSTROCK ENERGY CORP.**
Well: **CAMPBELL, LOIS D #3-5**
Field: **CHEROKEE BASIN CBM**

Company: **POSTROCK ENERGY CORP.**
Well: **CAMPBELL, LOIS D #3-5**
Field: **CHEROKEE BASIN CBM**
County: **WILSON** State: **KANSAS**

Location: **199 FSL & 700th FEL
SE 3/4 SE 3E**
APR #: **15-205-28134-00-00**
Other Services: **OPEN HOLE
4-03-2013**

Permanant Datum: **GL** Elevation: **1036'**
Log Measured From: **GL**
Drilling Measured From: **4-11-2013**
K.R. D.F.: **1036'**

Date: **4-11-2013**
Run Number: **1 NW**
Depth Chir: **1225**
Depth Logger: **1218.6**

Top Log Interval: **0**
Bottom Logged Interval: **1213.6'**
Fluid Level: **FULL**

Type Fluid: **WATER**
Production Casing: **5" @ TD**
Max. Recorded Temp: **9**
Estimated Cement Top: **9**

Calculated Cement Top: **9**
Amount & Type Cement: **9**
Amount & Type Annular: **9**
Drilling Contractor: **105**

Equipment Number: **105**
Location: **GORMLEY R**
Reported By: **HANSEN**

Revised By: **HANSEN**

<<< Fold Here >>>
All interpretations are opinions based on inferences from electrical or other measurements and we cannot and do not guarantee the accuracy or correctness of any interpretation, and we shall not, except in the case of gross or willful negligence on our part, be liable or responsible for any loss, costs, damages, or expenses incurred or sustained by anyone resulting from any interpretation made by any of our officers, agents or employees. These interpretations are also subject to our general terms and conditions set out in our current Price Schedule.

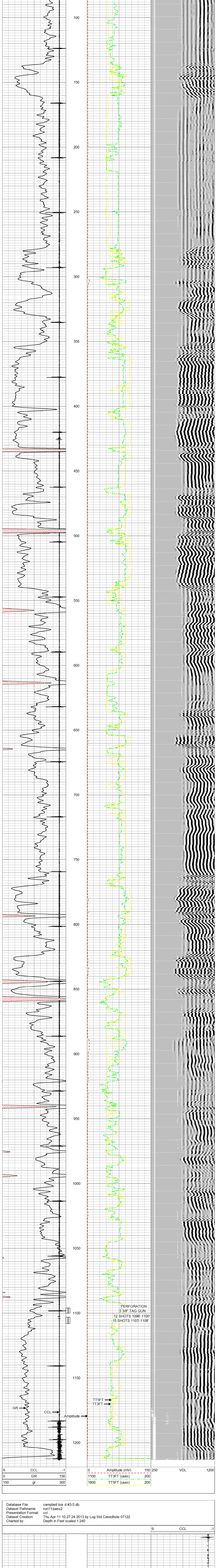
Comments:
THANK YOU

Sensor	Offset (ft)	Schematic	Description	Len (ft)	OD (in)	Wt (lb)
			tekco tekco cont.	2.17	1.69	5.00
WVF3FT	6.58		CBLTEKCO-TEKCO2RCVR (TEKCO169) 1 11/16" TEKCO 2 RCVR DELWARE	9.75	1.69	50.00
WVF5FT	5.58					
WVFCAL	2.17		tekco tekco cont.	2.17	1.69	5.00
WVFSYNC	2.17					

Dataset: **campbell lois d #3-5-db: field/well/run1/pass2MERGE**
Total Length: **14.08 ft**
Total Weight: **60.00 lb**
O.D.: **1.69 in**

Database File: **campbell lois d #3-5-db**
Dataset Pathname: **pass2MERGE**
Presentation Format: **scbl_dr**
Dataset Creation: **Thu Apr 11 10:03:00 2013**
Charted by:

Charted by:	9	CCL	-1	0	Amplitude (mV)	150	250	VDL	1200
	0	GR	150	1100	TT3FT (usec)	200			
	150	gr	300	1800	TT5FT (usec)	200			



Database File: **campbell lois d #3-5-db**
Dataset Pathname: **run1/pass2**
Presentation Format: **ccl**
Dataset Creation: **Thu Apr 11 10:27:24 2013 by Log Std Casedhole 07122**
Charted by:

Charted by:	9	CCL	-1

NEW PERFS →
NEW PERFS →

