



MIDWEST SURVEYS
 LOGGING - PERFORATING - CONSULTING SERVICES
 P.O. Box 68, Osawatomie, KS 66064
 913 / 755 - 2128

GAMMA RAY / NEUTRON / CCL

File No. Company **Altavista Energy, Inc.**
 Well **Baldwin Unit No. A-33**

Field **Baldwin**
 County **Douglas** State **Kansas**

Location **1320' FSL & 5115' FEL**
W/2-W/2-W/2-SW

Sec. 1 Permament Datum Log Measured From Drilling Measured From

Typ. 15s Rge. 20e Elevation 1074'
 KB NA DF NA GL 1074'

Date 07-09-2013

Run Number One
 Depth Drier 980.0
 Depth Logger 903.0
 Bottom Logged Interval 902.0
 Top Log Interval 200.0
 Fluid Level Full

Type Fluid **Water**
 Density / Viscosity NA
 Salinity - PPM Cl NA
 Max Recorded Temp NA
 Estimated Cement Top 0.0
 Equipment No. Location 102 Osawatomie
 Recorded By Gary Windsch
 Witnessed By Doug Evans

BORE-HOLE RECORD				CASING RECORD			
RUN	BIT	FROM	TO	SIZE	WGT.	FROM	TO
One	9.875"	0.0	41.0	7.00"	17.0 #	0.0	41.0
Two	5.625"	41.0	980.0	2.875"	6.5 #	0.0	939.45
				Baffle	Set	At	908.15

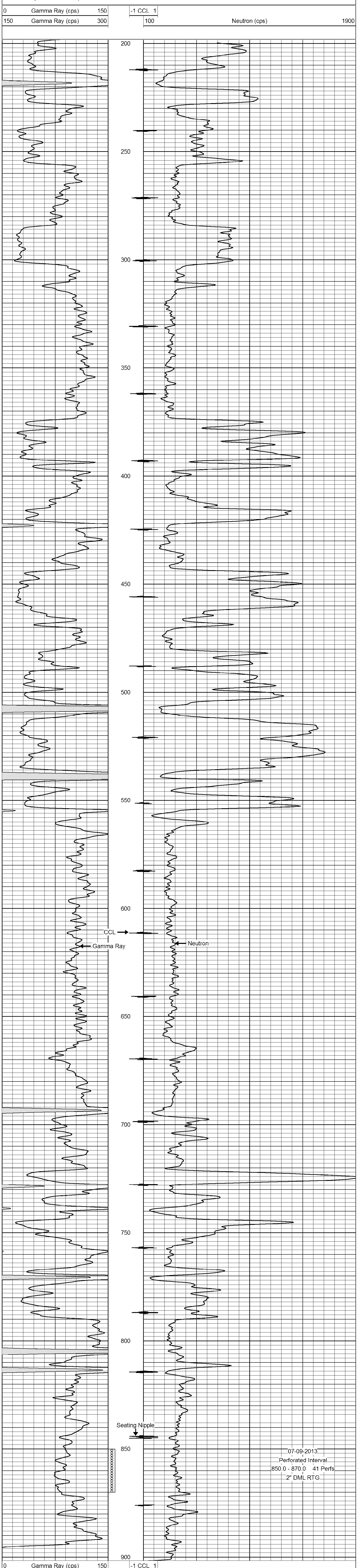
<<< Fold Here >>>

All interpretations are opinions based on inferences from electrical or other measurements and we cannot and do not guarantee the accuracy or correctness of any interpretation, and we shall not, except in the case of gross or willful negligence on our part, be liable or responsible for any loss, costs, damages, or expenses incurred or sustained by anyone resulting from any interpretation made by any of our officers, agents or employees. These interpretations are also subject to our general terms and conditions set out in our current Price Schedule.

Comments

Drilling Contractor :
 Town Oilfield Services, Inc.

Database File: baldwin33au.db
 Dataset Pathname: pass1
 Presentation Format: gr-n-ccl
 Dataset Creation: Tue Jul 09 10:14:57 2013 by Log SCH 111116
 Charted by: Depth in Feet scaled 1:240



07-09-2013
 Perforated Interval
 850.0 - 870.0 41 Perfs
 2" DML RTG