



**COMPLETION  
& PRODUCTION  
SERVICES CO.**

**SONIC  
LOG**

Company DOWNING-NELSON OIL CO INC.  
Well CARL QUINT #1-3  
Field WILDCAT  
County GRAHAM  
State KANSAS

Company DOWNING-NELSON OIL CO INC.  
Well CARL QUINT #1-3  
Field WILDCAT  
County GRAHAM State KANSAS

Location: API # : 15-065-23915-00-00  
2570' FNL & 1100' FEL  
SW - SW - SE - NE  
SEC 3 TWP 9S RGE 23W  
Permanent Datum GROUND LEVEL Elevation 2198  
Log Measured From KELLY BUSHING 8' A.G.L.  
Drilling Measured From KELLY BUSHING  
Elevation  
Other Services  
CNL/CDL  
DIL/MEL  
K.B. 2206  
D.F. 2204  
G.L. 2198

Date	4/9/13		
Run Number	TWO		
Depth Driller	3788		
Depth Logger	3789		
Bottom Logged Interval	3779		
Top Log Interval	200		
Casing Driller	8 5/8" @ 218		
Casing Logger	216		
Bit Size	7 7/8"		
Type Fluid in Hole	CHEMICAL MUD	CHLORIDES 2,000 PPM	
Density / Viscosity	9.1/58		
pH / Fluid Loss	9.5/8.0		
Source of Sample	FLOWLINE		
Rm @ Meas. Temp	0.85 @ 79F		
Rmt @ Meas. Temp	0.64 @ 79F		
Rmc @ Meas. Temp	1.02 @ 79F		
Source of Rmf / Rmc	MEASUREMENT		
Rm @ BHT	0.59 @ 114F		
Time Circulation Stopped	2 HOURS		
Time Logger on Bottom			
Maximum Recorded Temperature	114F		
Equipment Number	4010		
Location	HAYS, KANSAS		
Recorded By	IAN MAAB		
Witnessed By	RON NELSON		

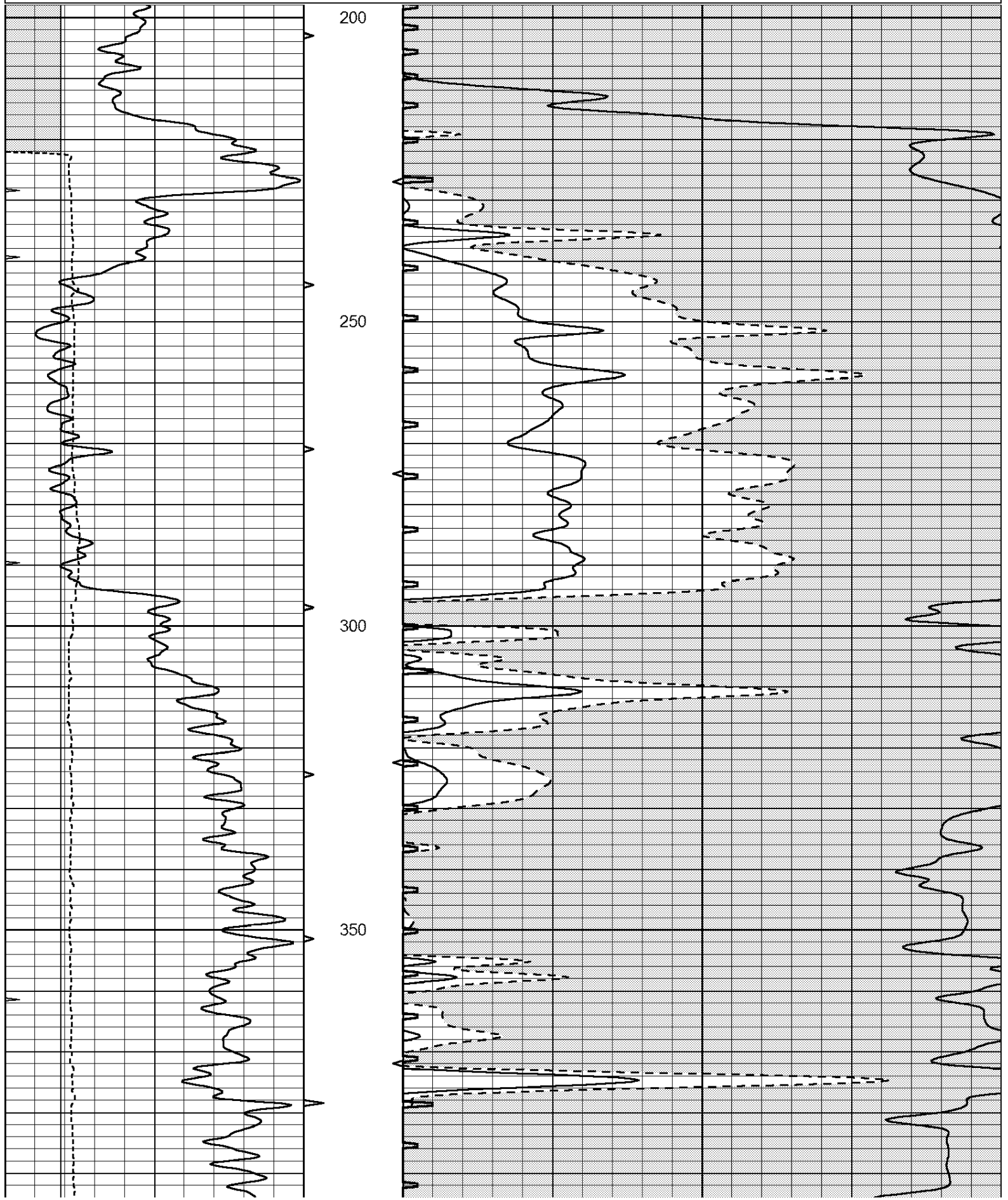
<<< Fold Here >>>

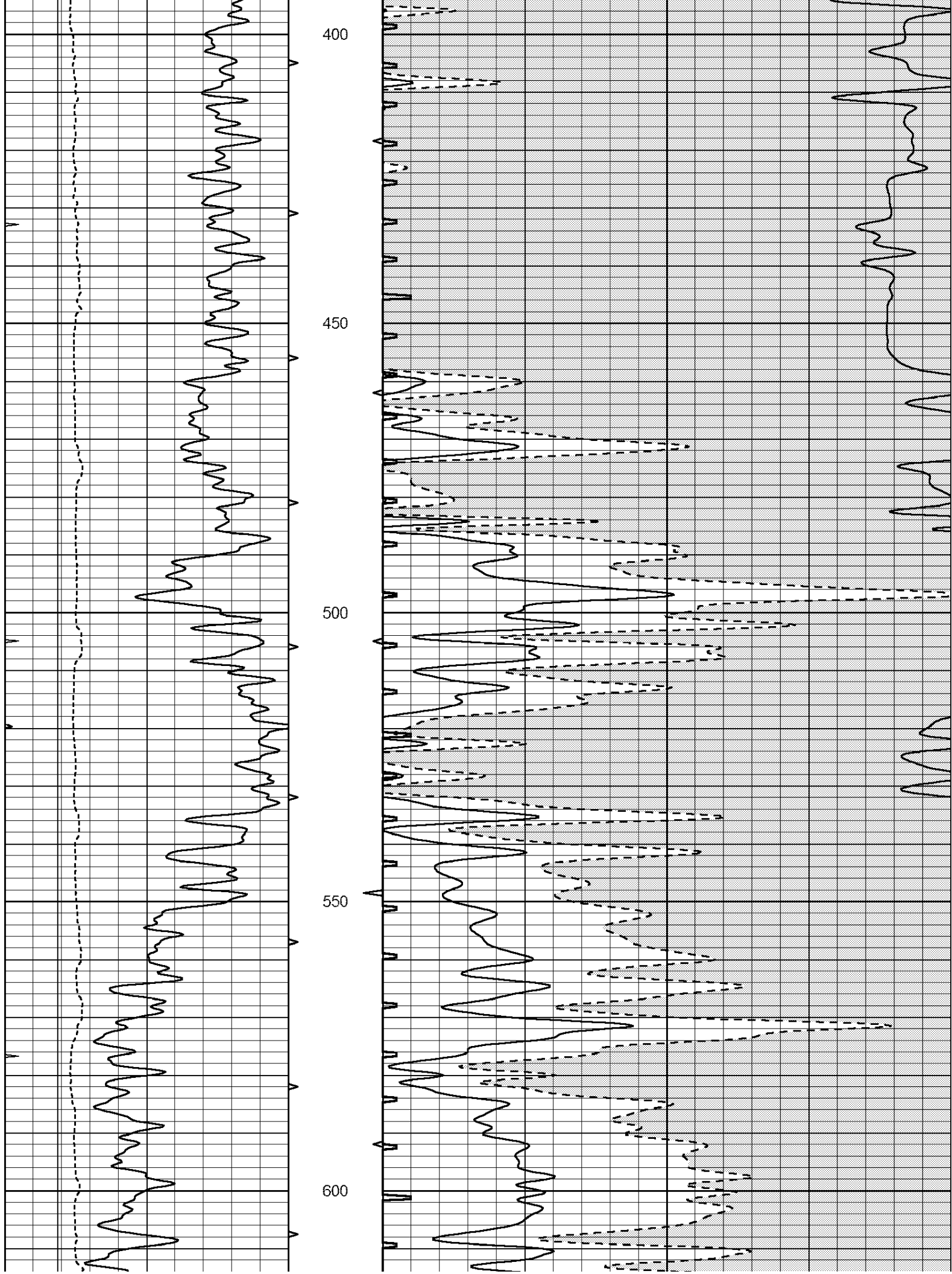
All interpretations are opinions based on inferences from electrical or other measurements and we cannot and do not guarantee the accuracy or correctness of any interpretation, and we shall not, except in the case of gross or willful negligence on our part, be liable or responsible for any loss, costs, damages, or expenses incurred or sustained by anyone resulting from any interpretation made by any of our officers, agents or employees. These interpretations are also subject to our general terms and conditions set out in our current Price Schedule.

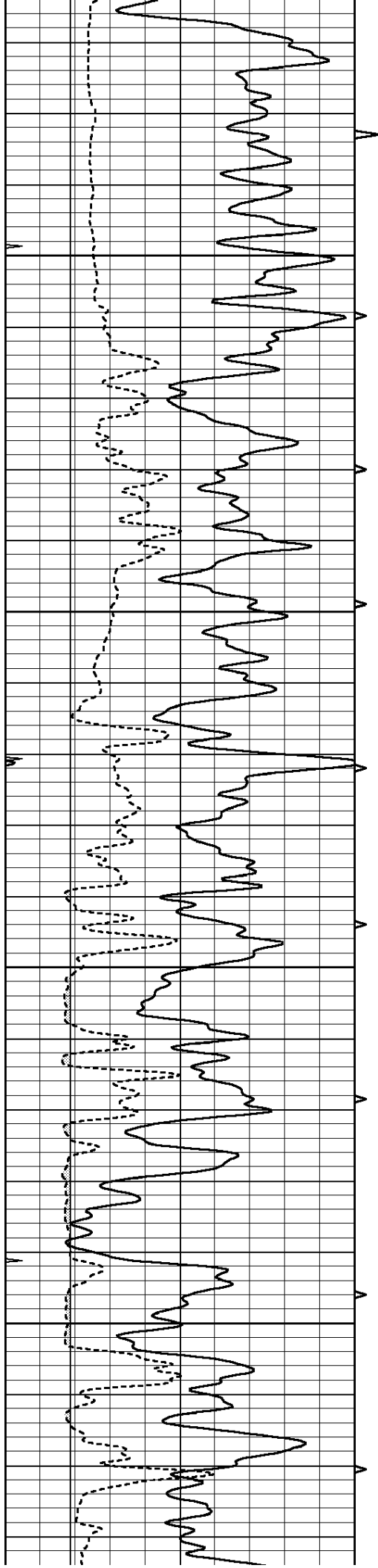
**Comments**

THANK YOU FOR USING NABORS, HAYS, KS. (785) 628-6395  
DIRECTIONS:  
WAKEENEY, KS. - 21 MILES NORTH TO RD. M -1 WEST TO THE BEND SOUTH 1/2 MILE - WEST INTO

0	GAMMA RAY (GAPI)	150	ABHV	140	DELTA TIME (usec/ft)	40
6	CALIPER (in)	16	10 (ft3) 0	30	SONIC POROSITY (pu)	-10
0	MINMK	20	TBHV	0	ITT (msec)	20
			0 (ft3) 10			





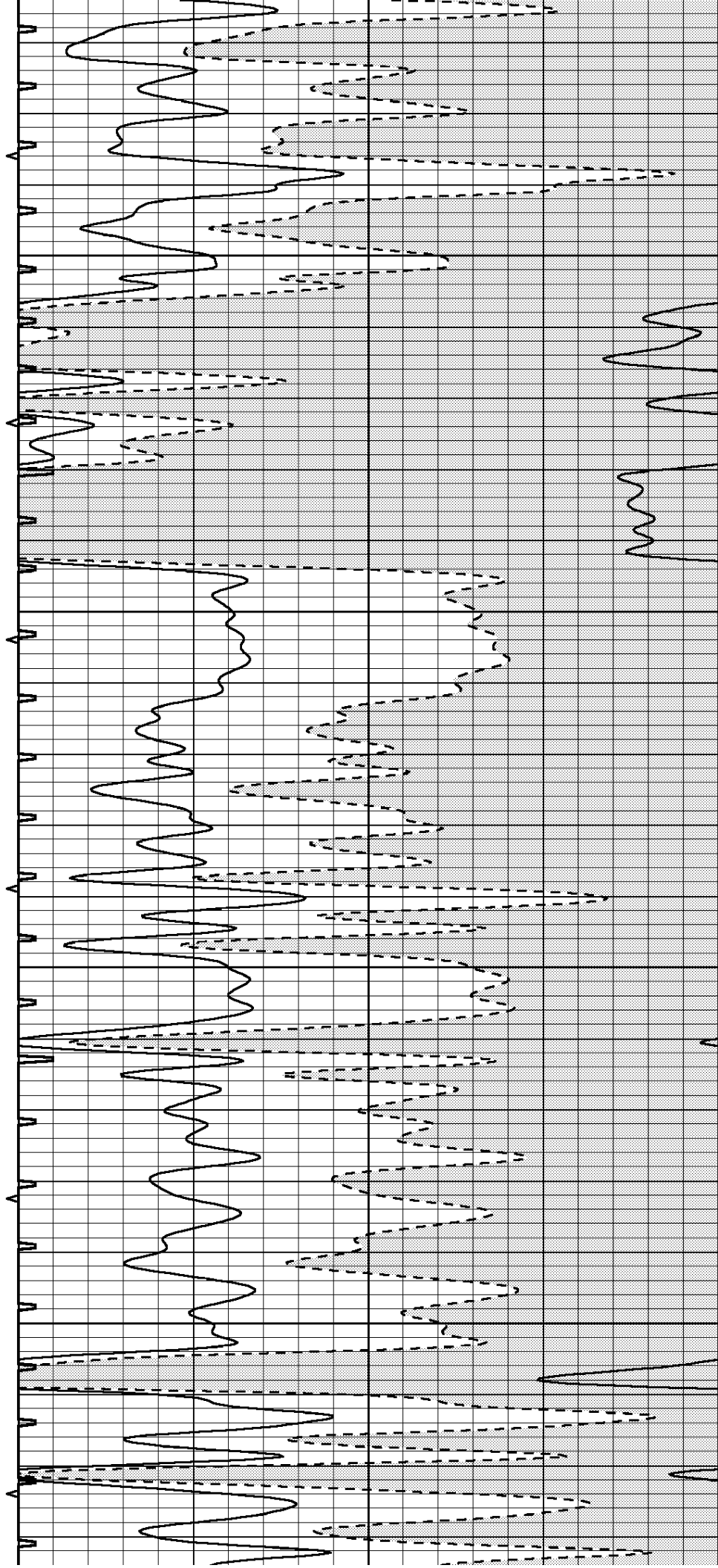


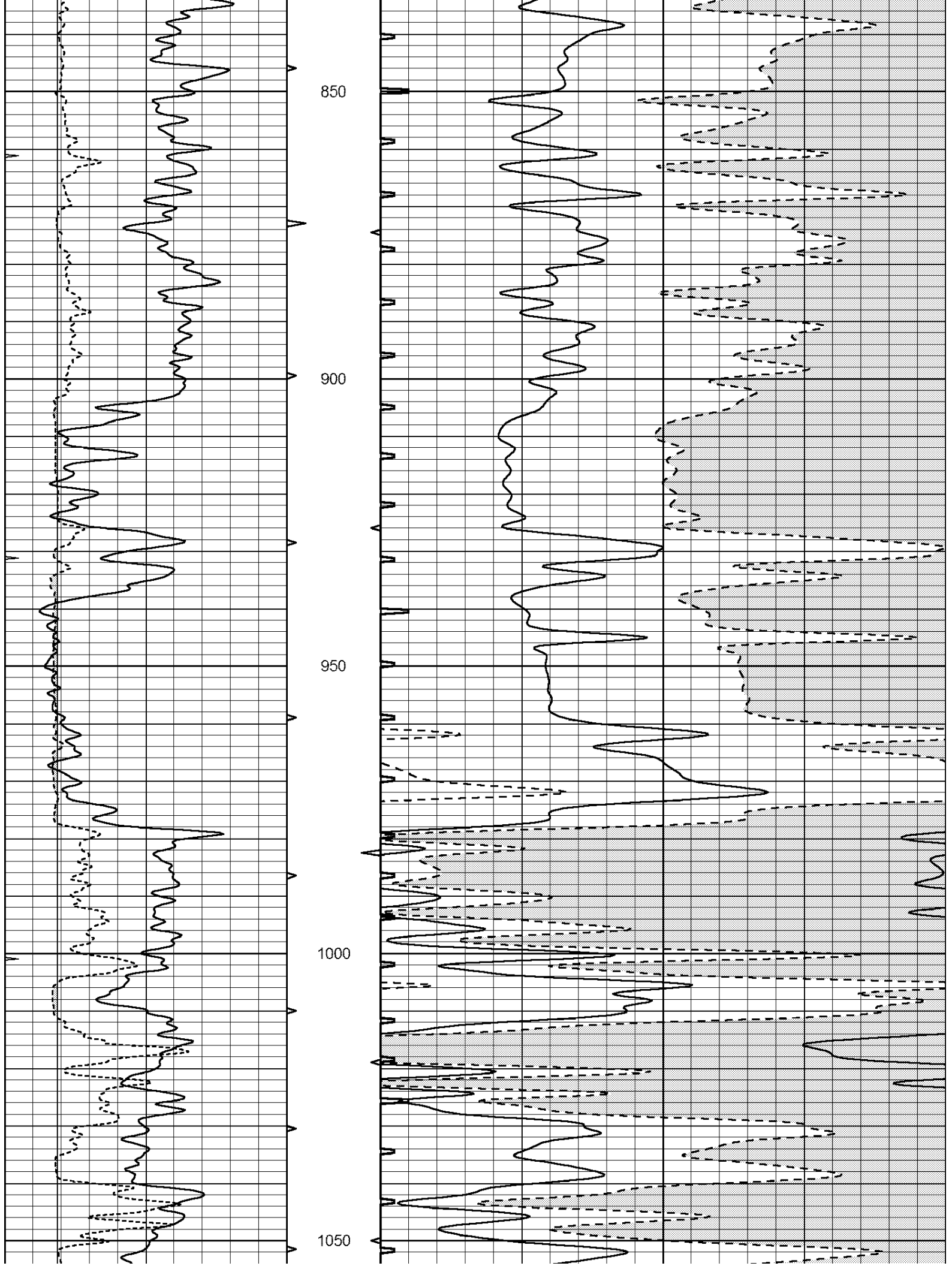
650

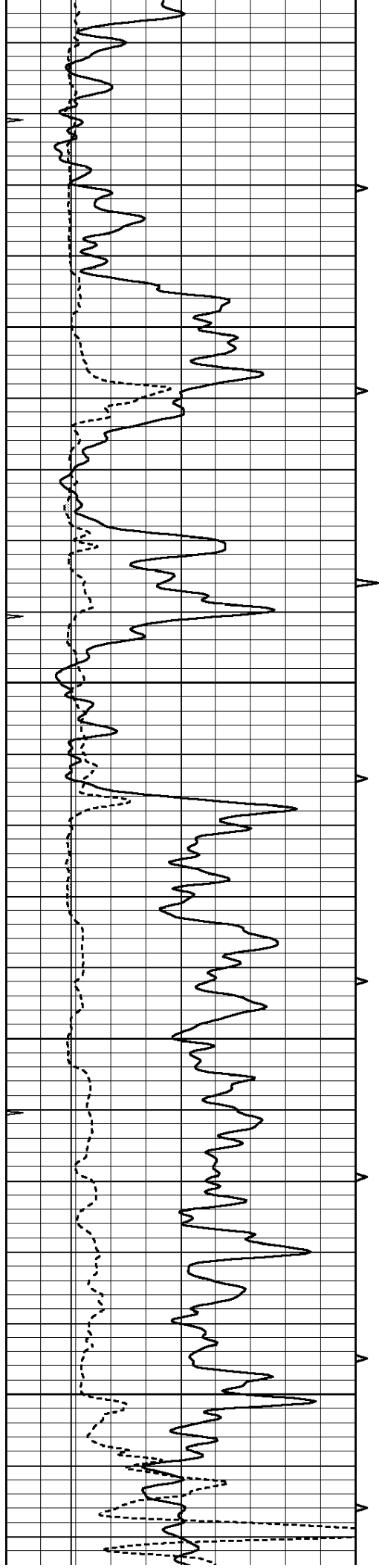
700

750

800





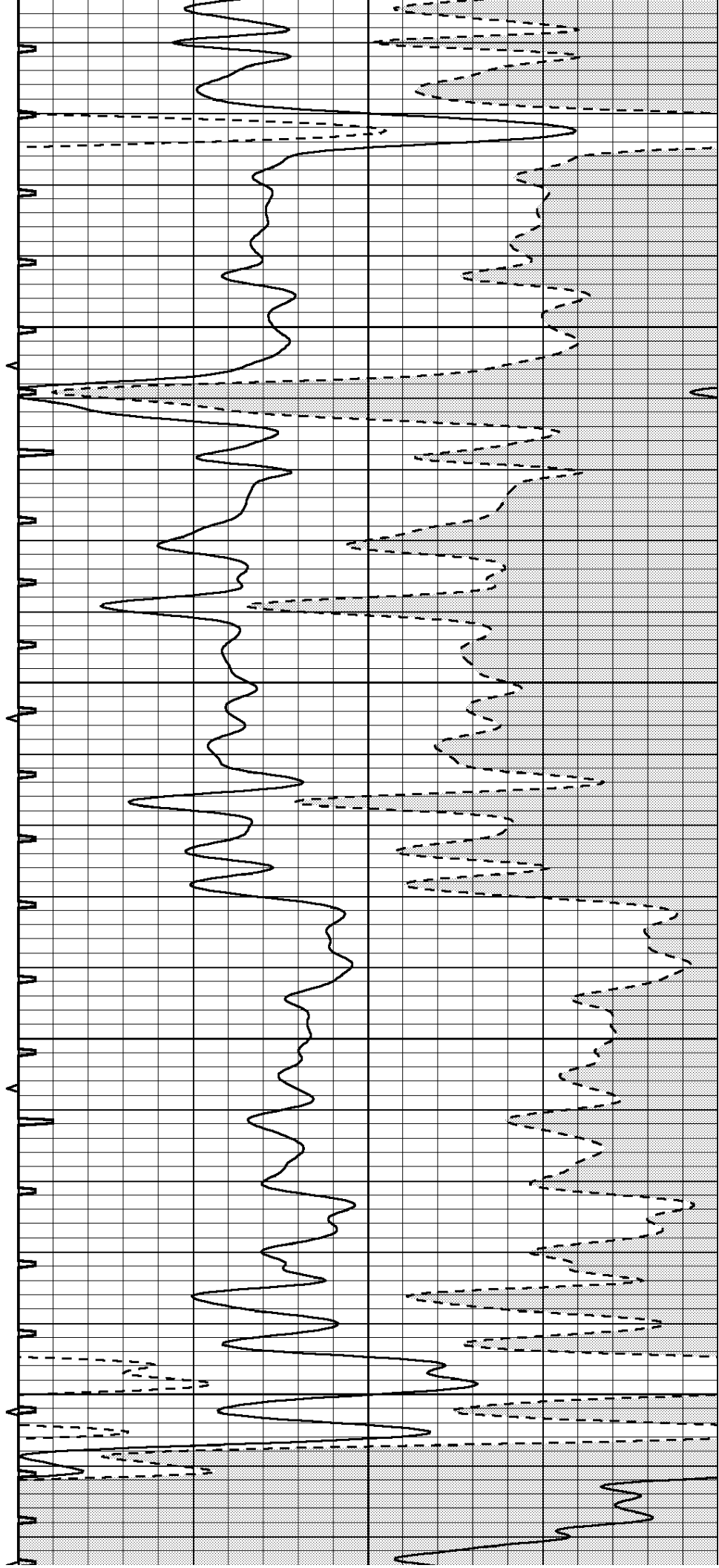


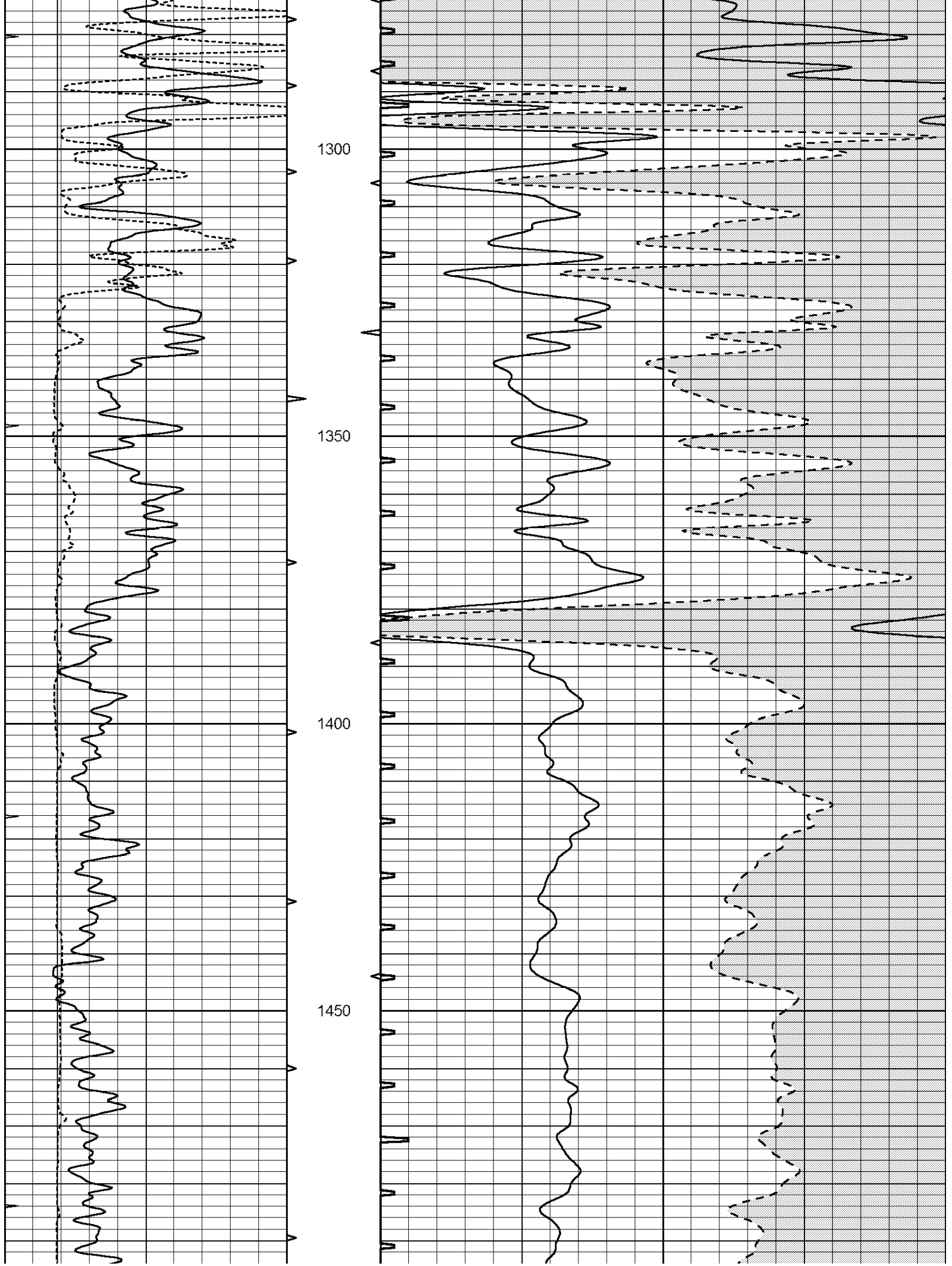
1100

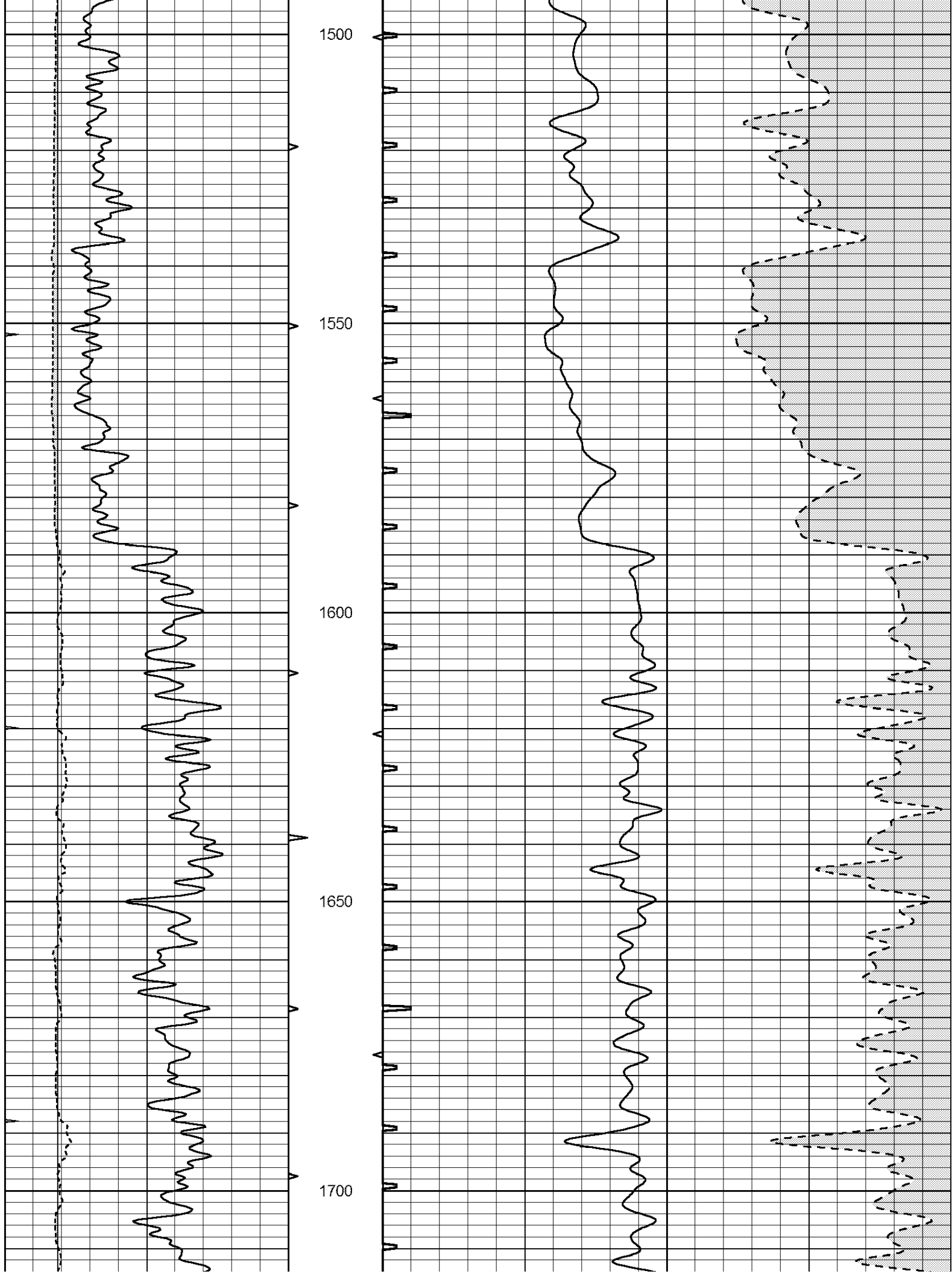
1150

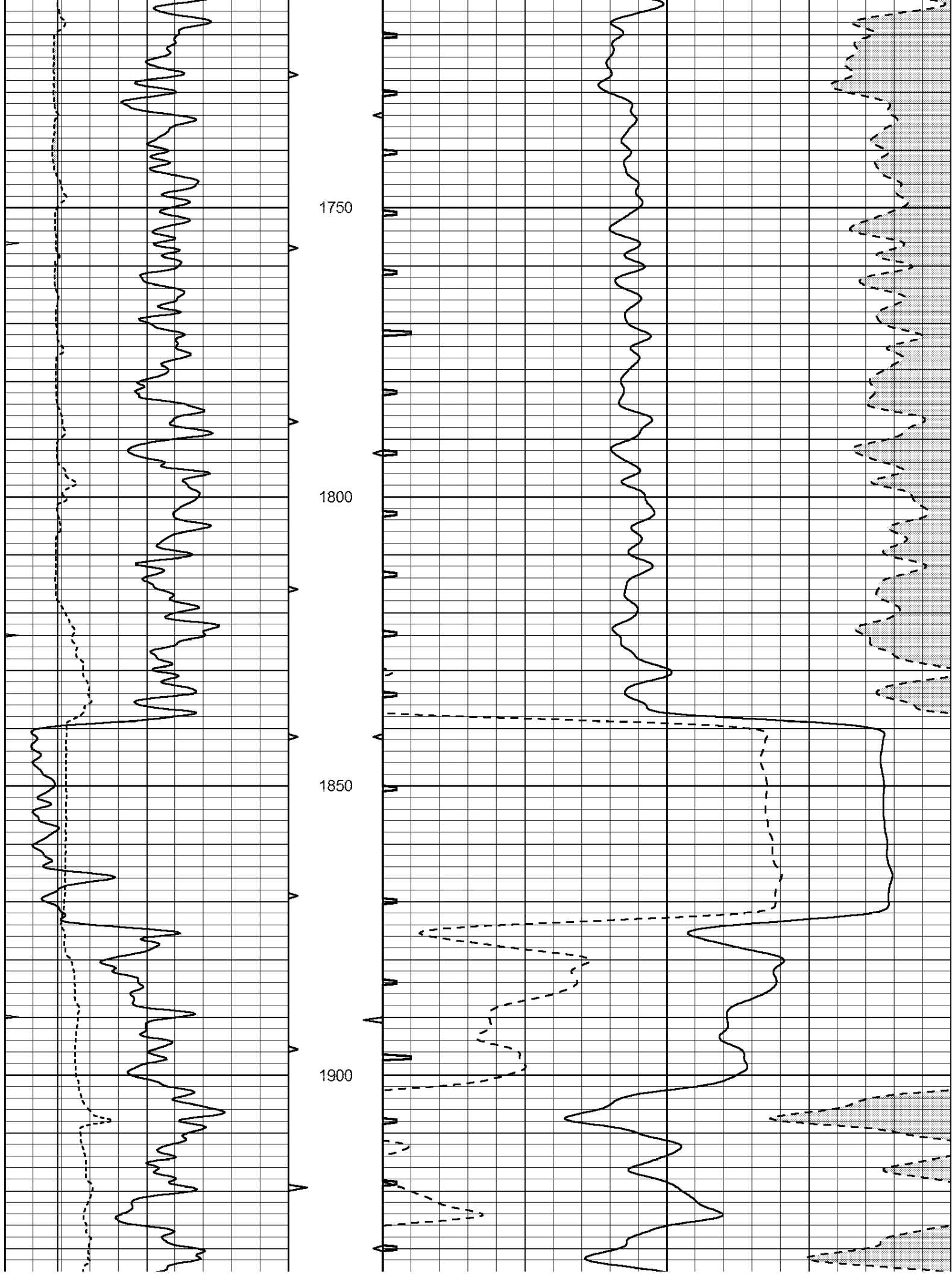
1200

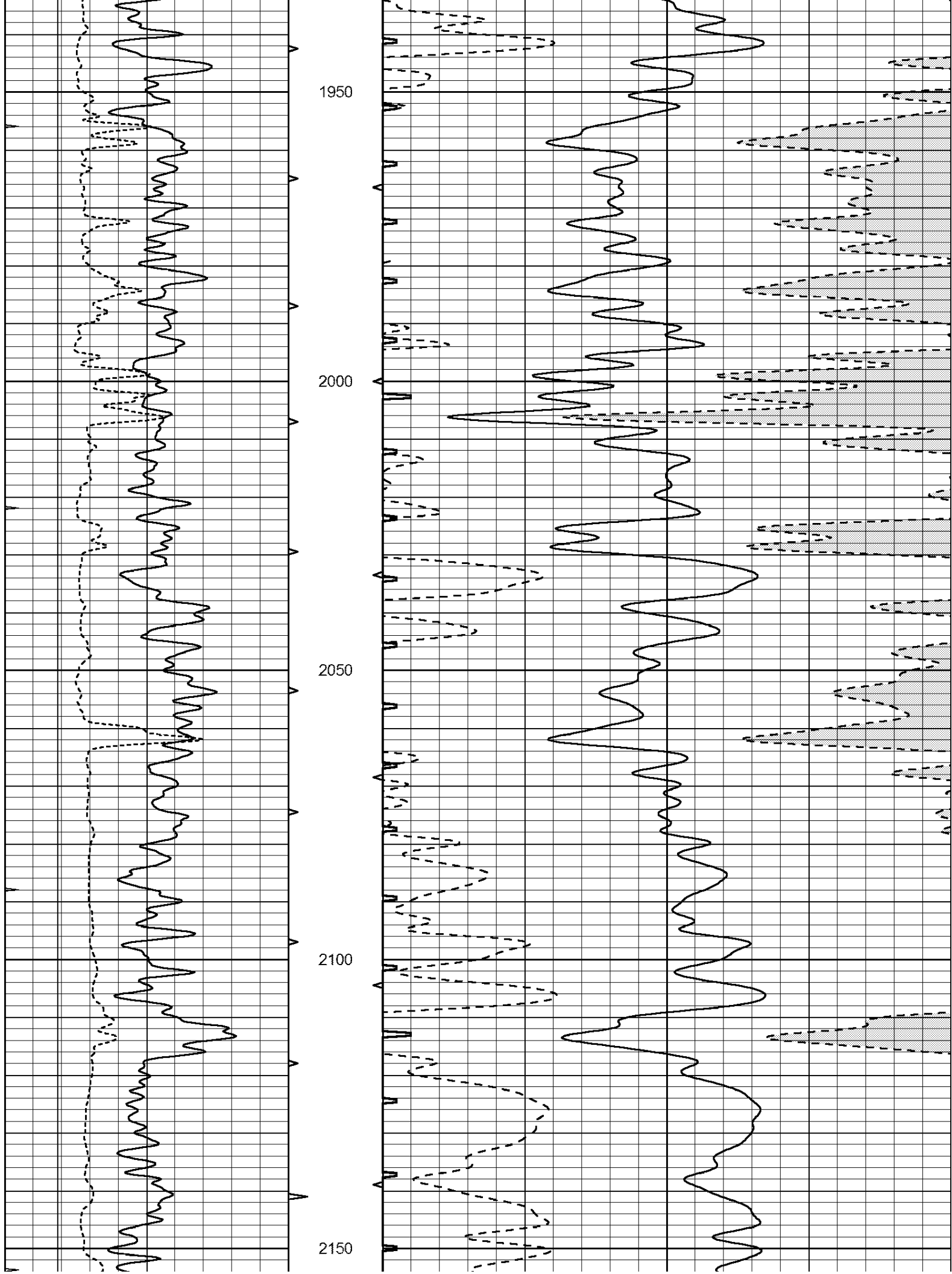
1250

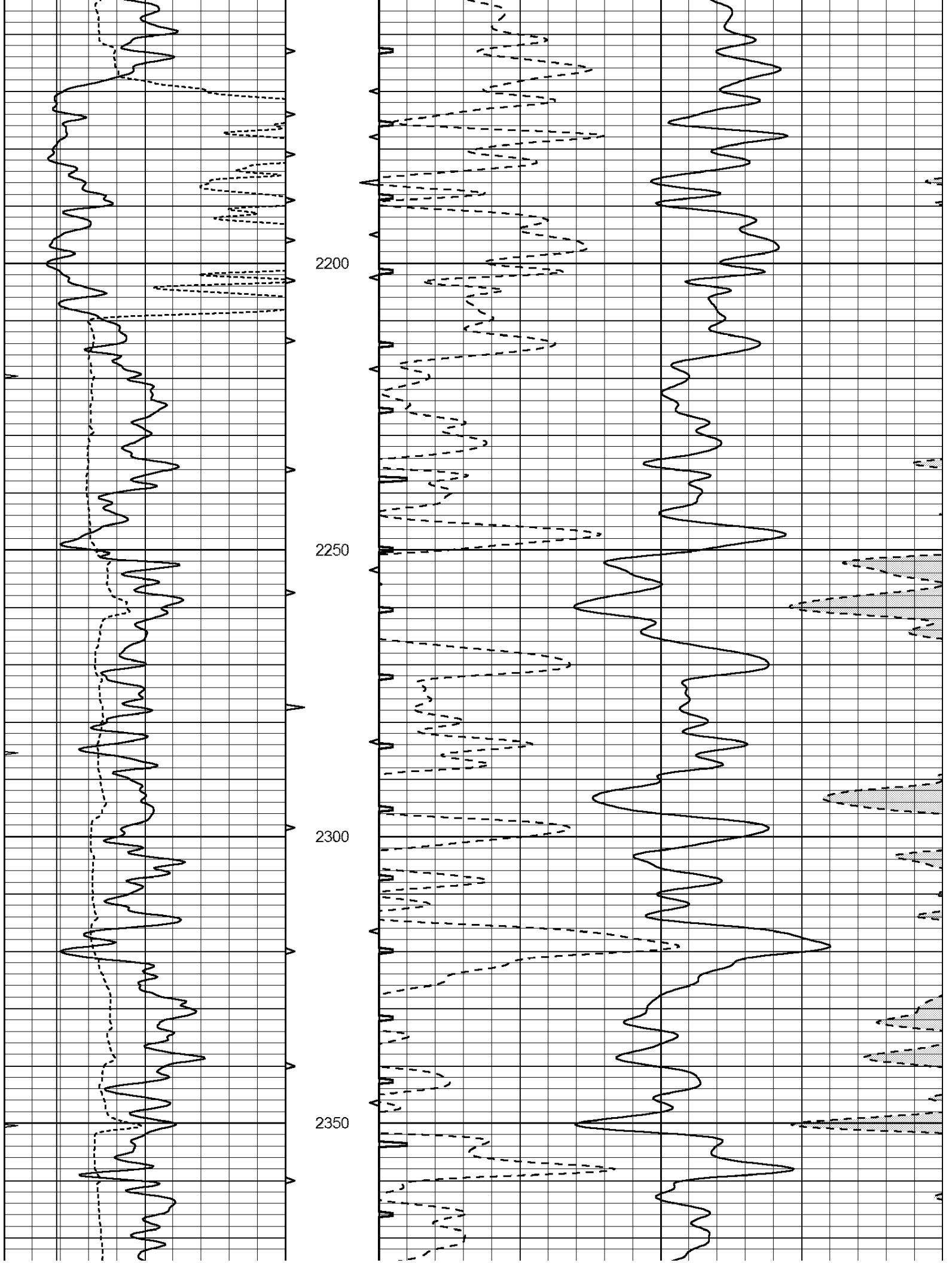


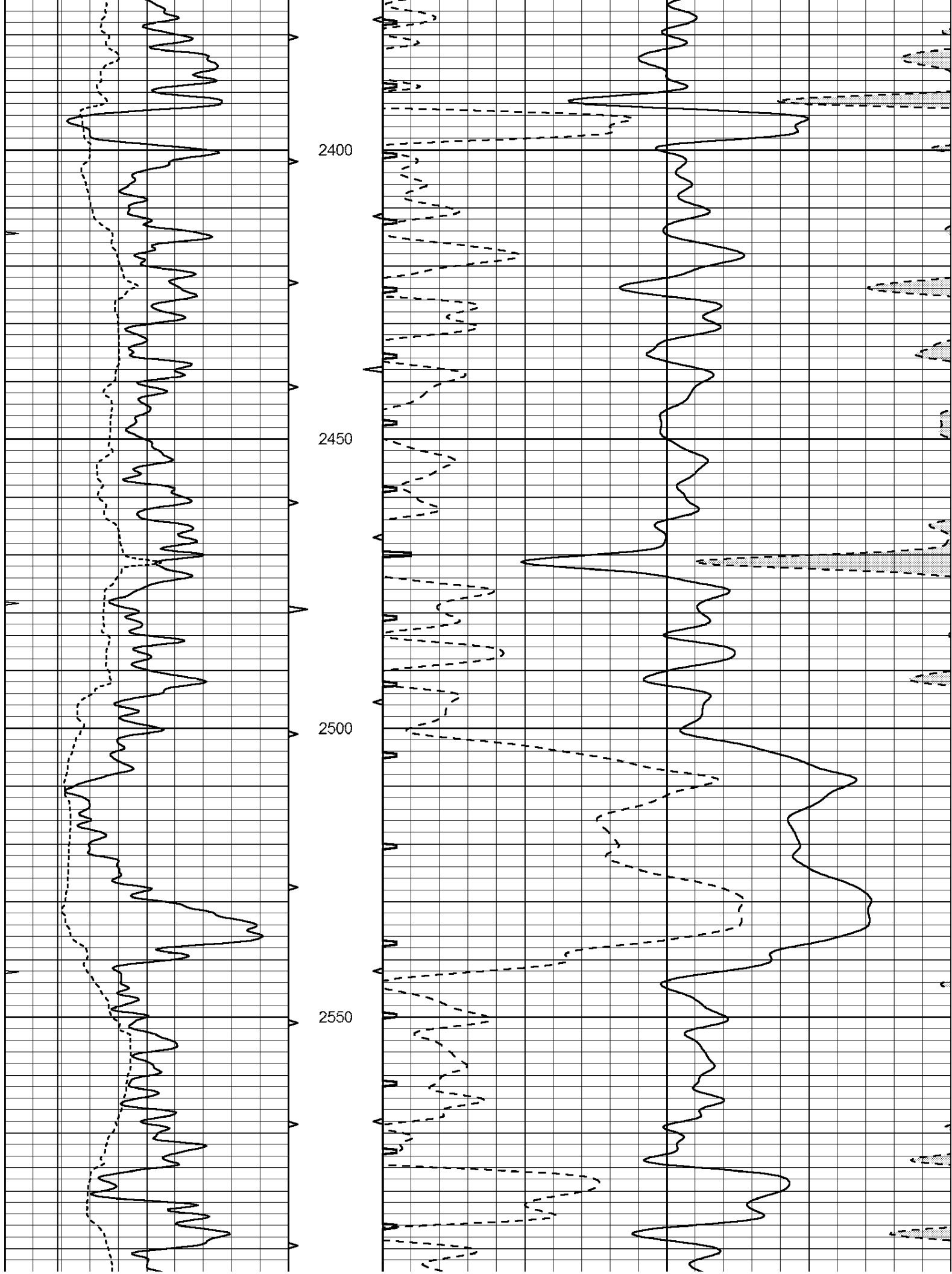


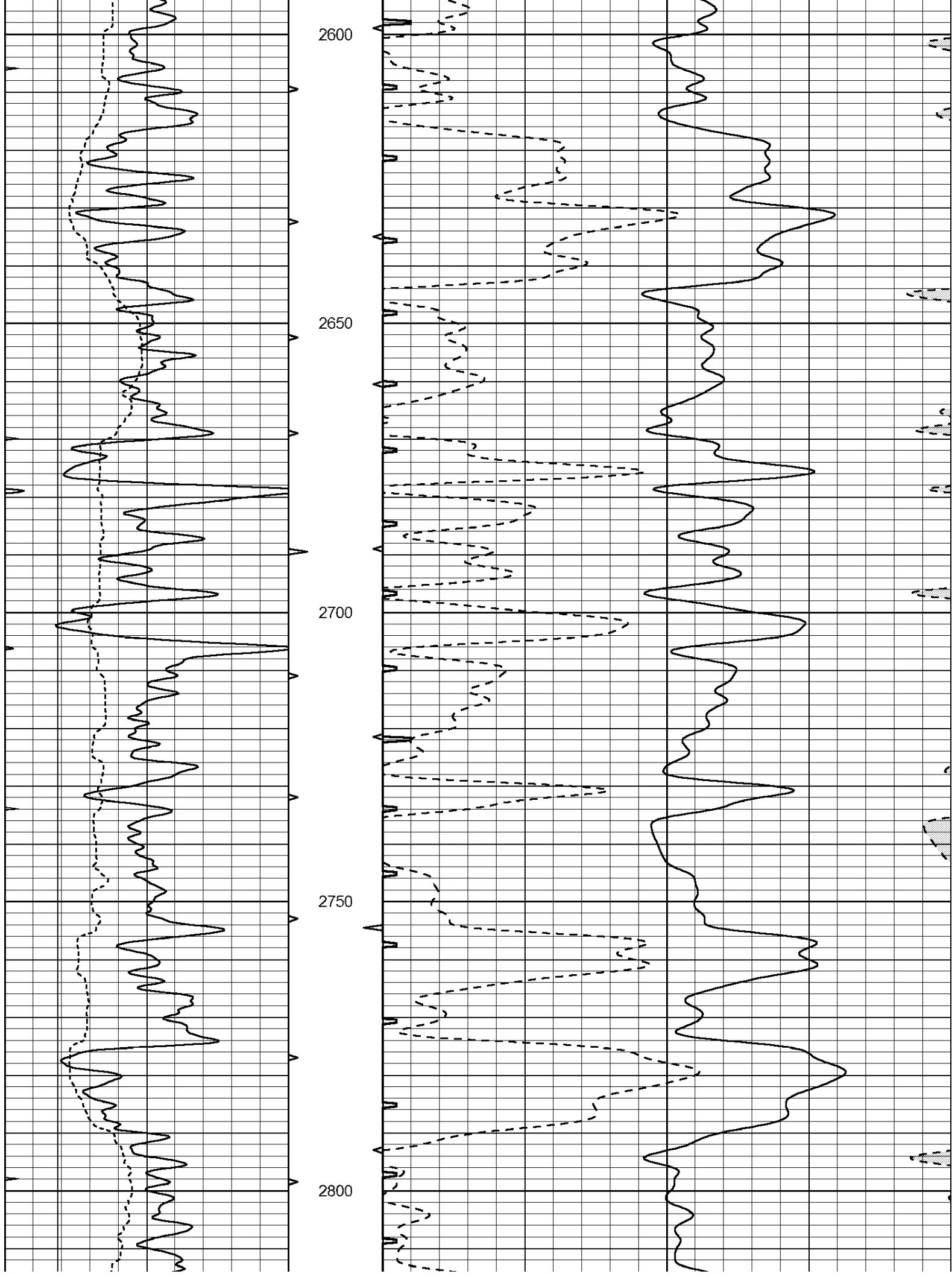


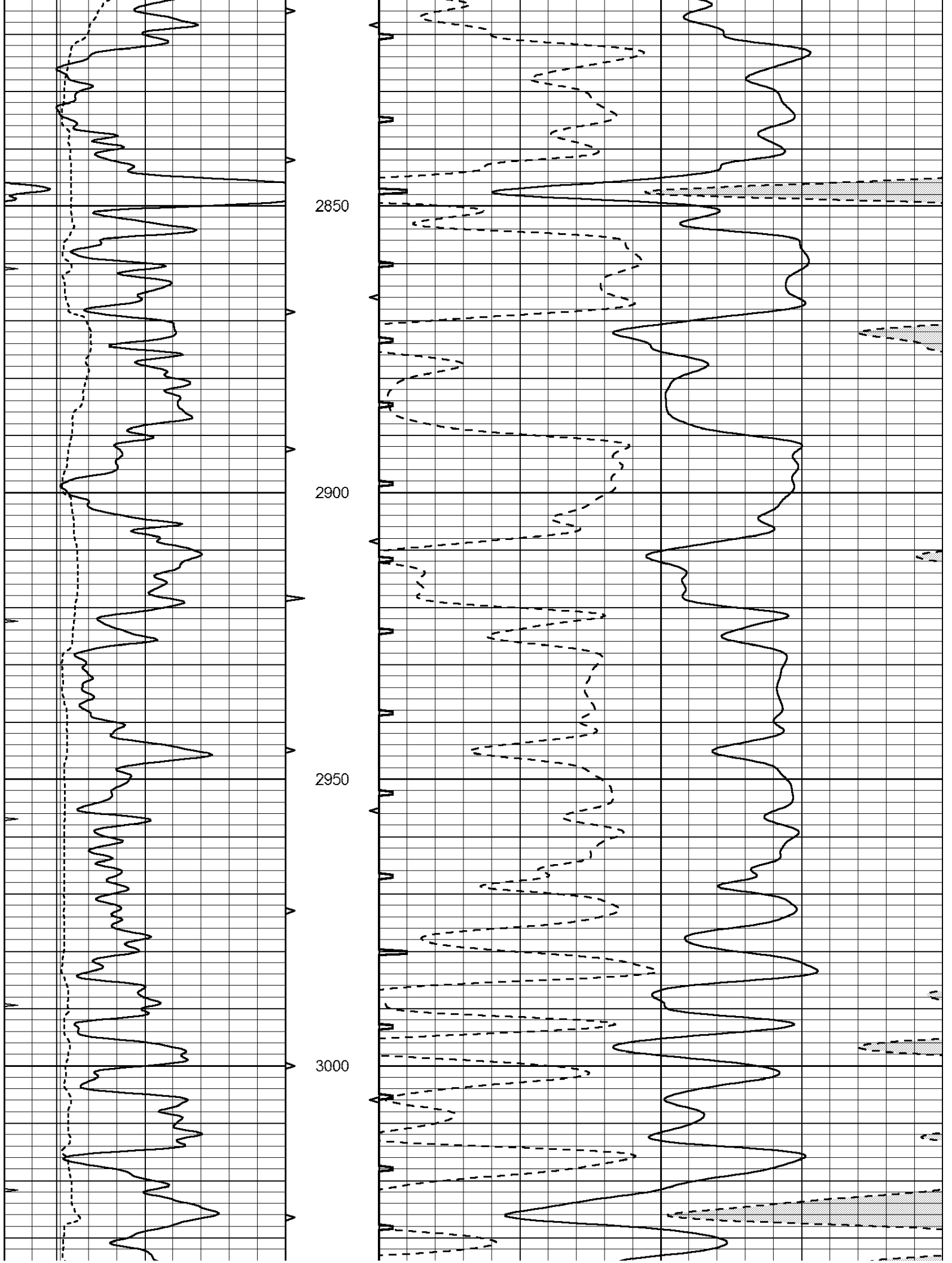


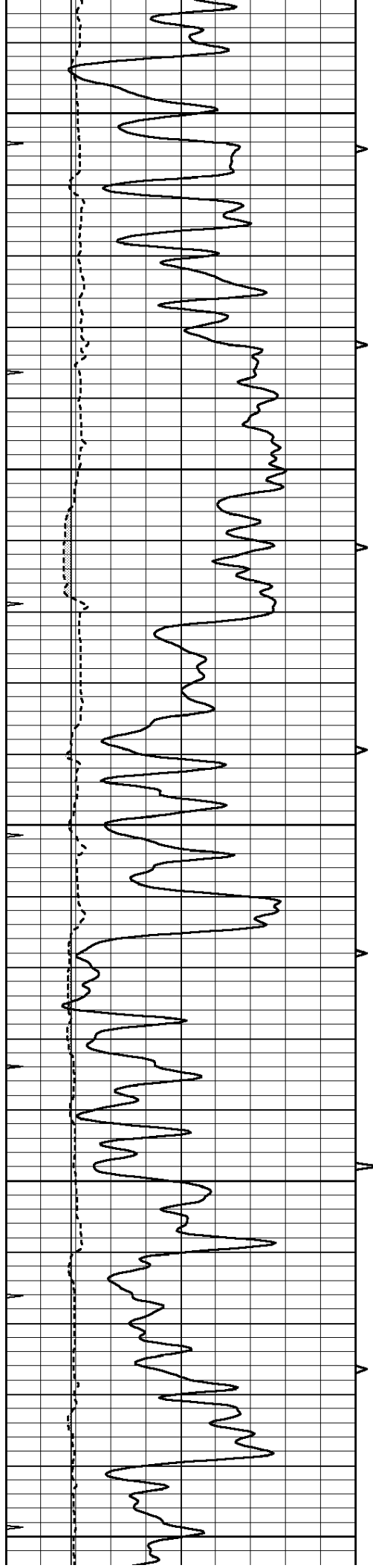












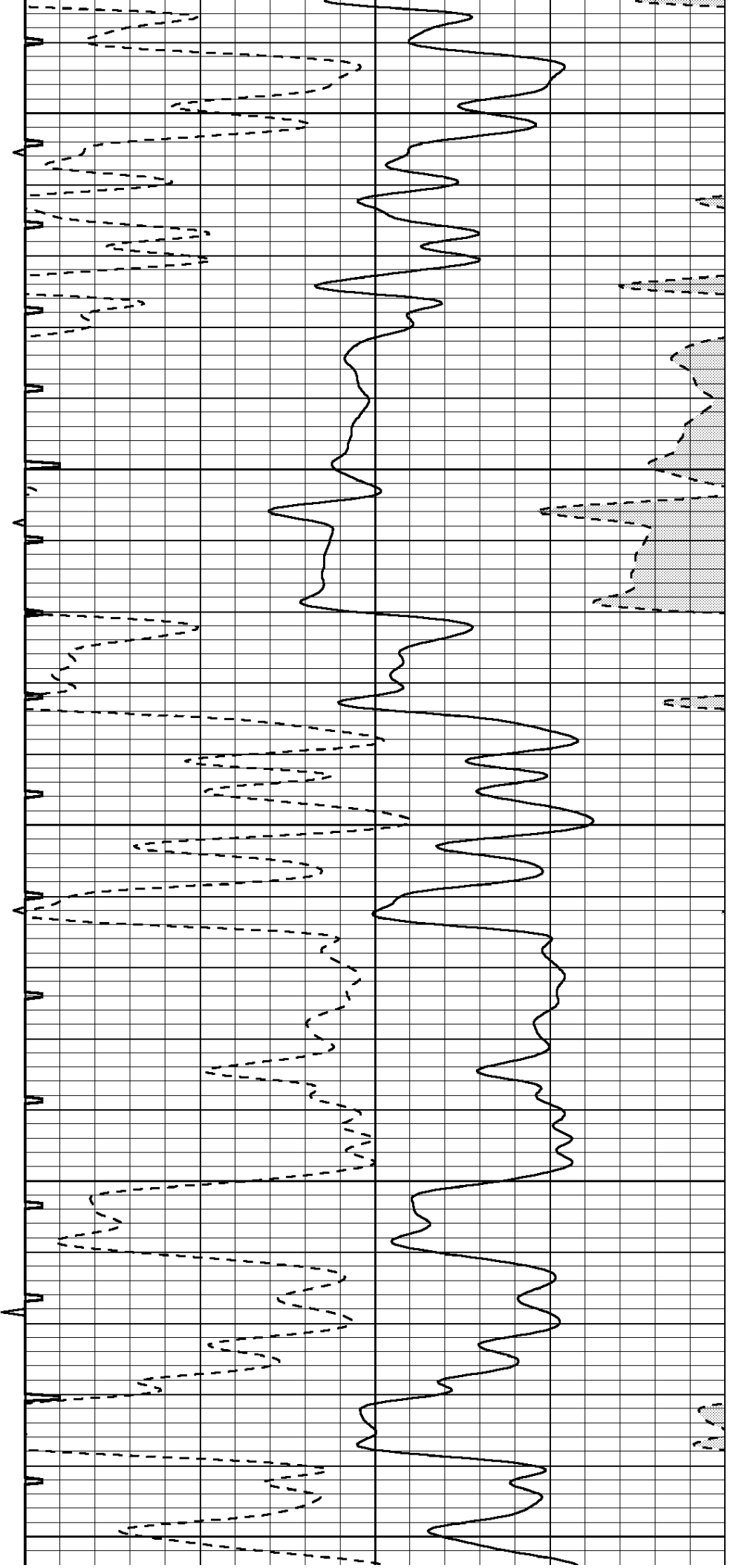
3050

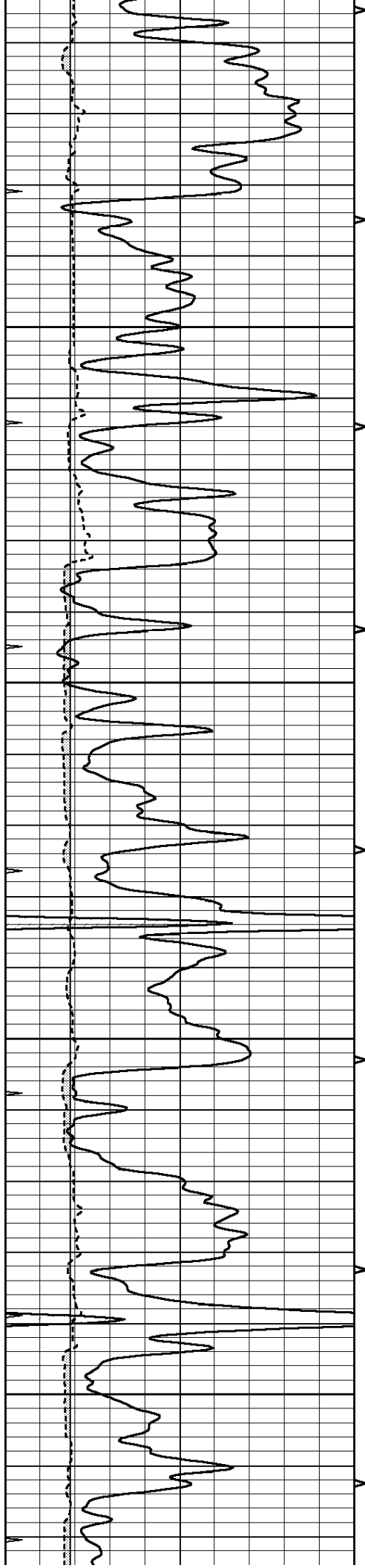
3100

3150

3200

3250



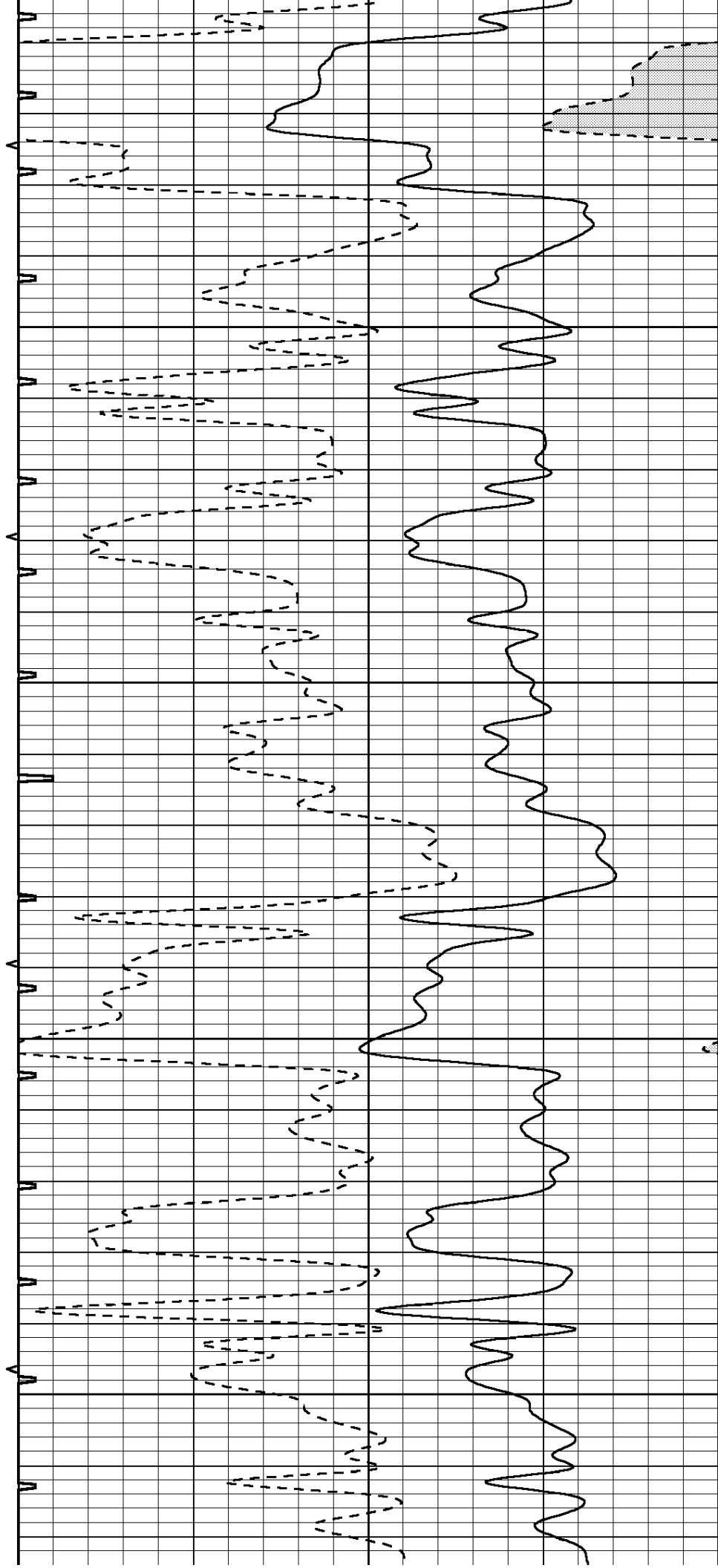


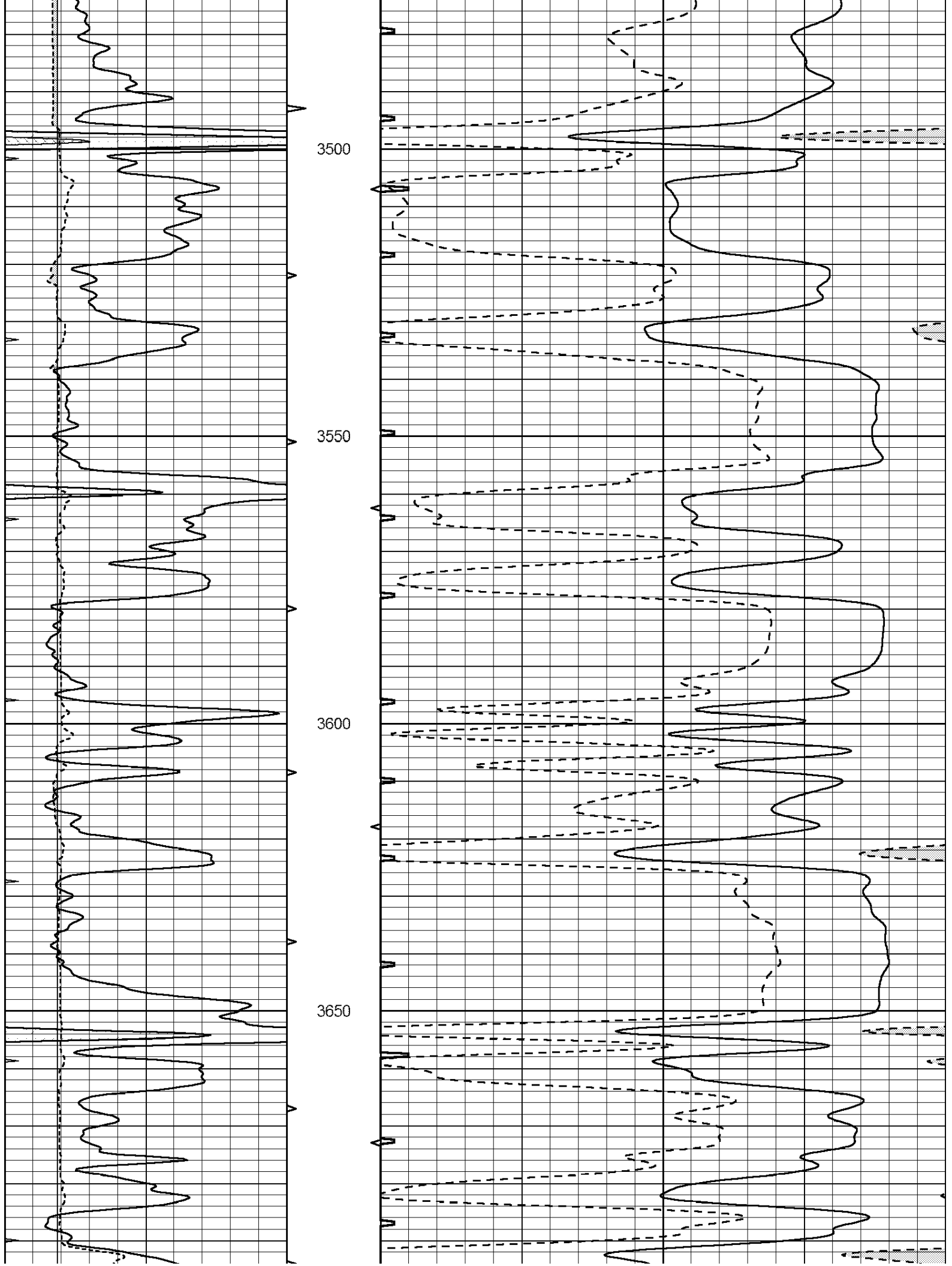
3300

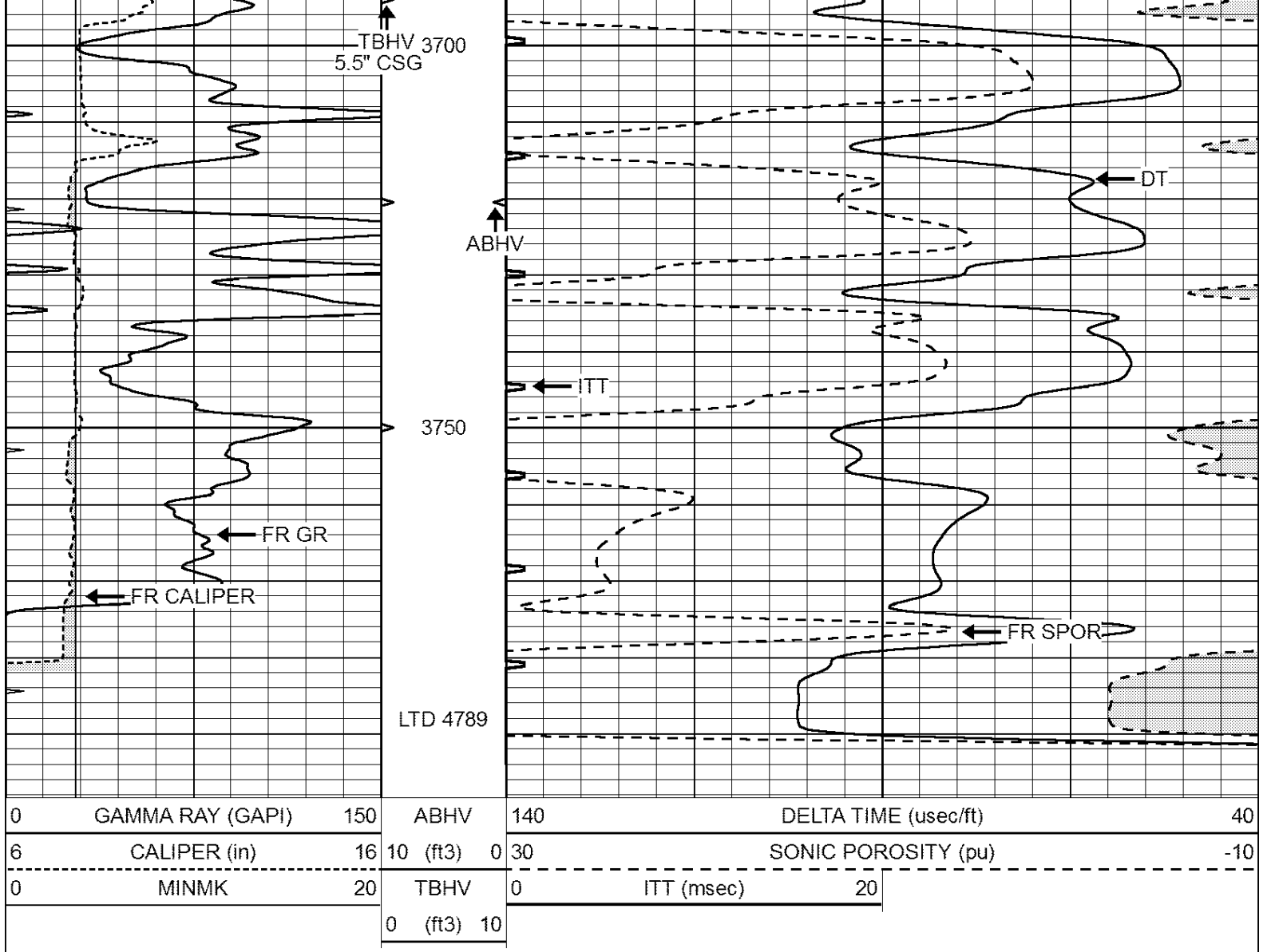
3350

3400

3450



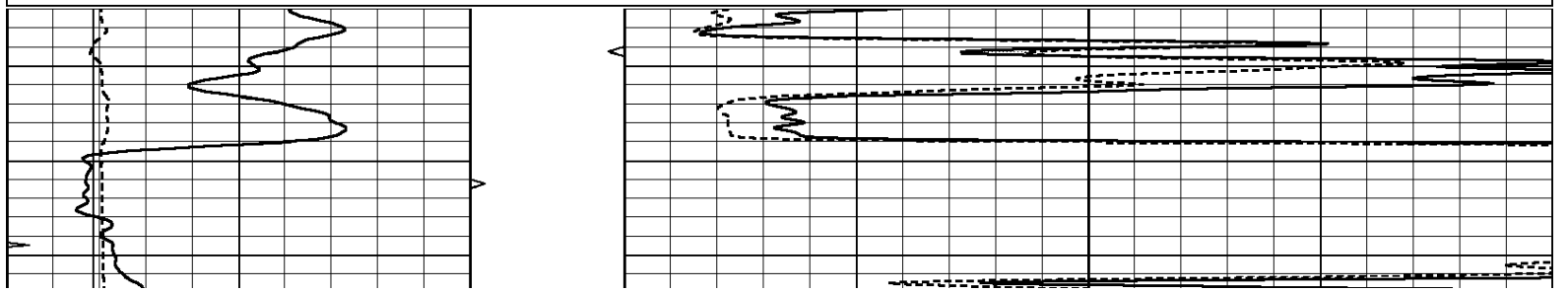


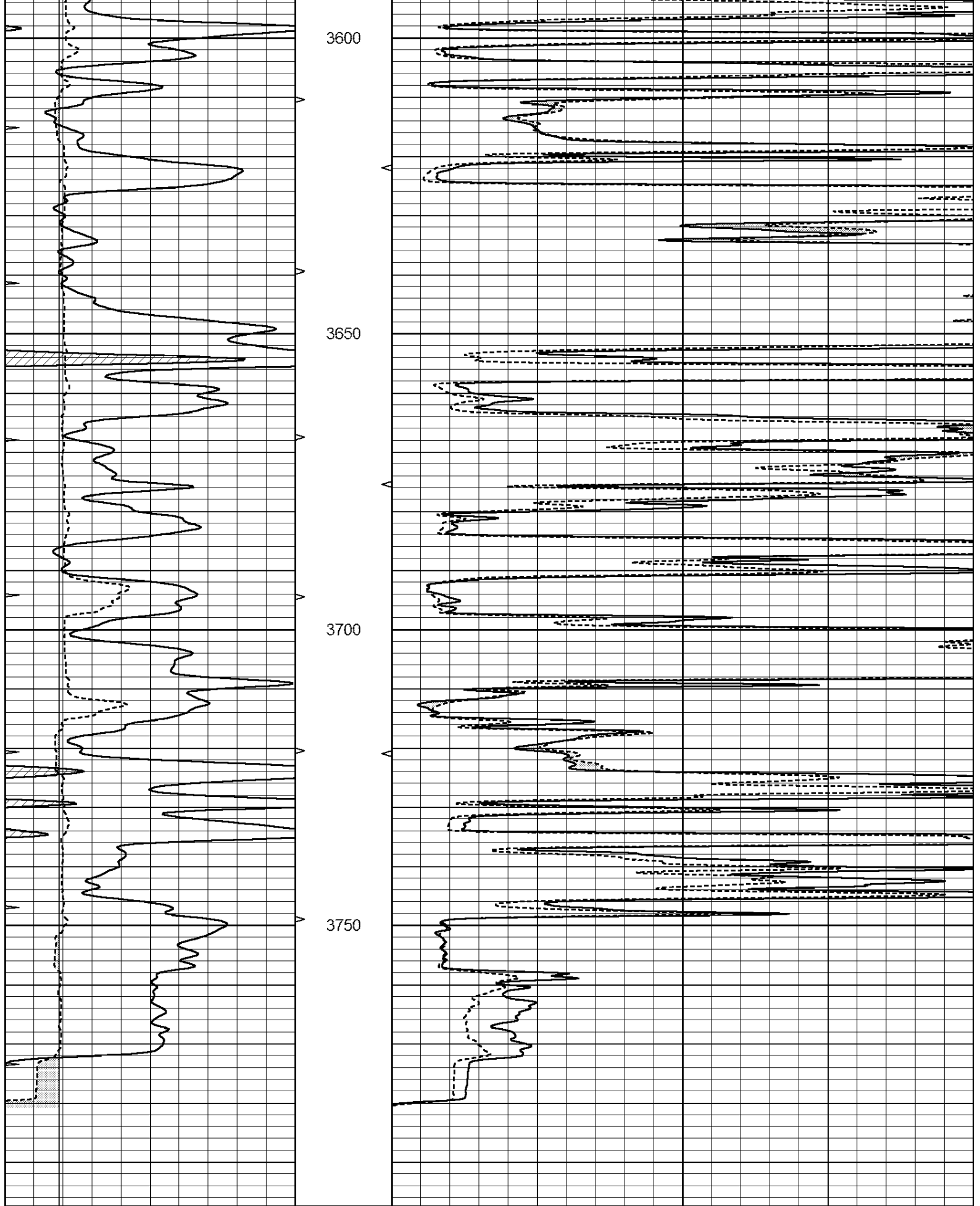


# REPEAT SECTION

Database File: 010868ddn.db  
 Dataset Pathname: pass9.1.1  
 Presentation Format: \_micro  
 Dataset Creation: Tue Apr 09 14:27:28 2013 by Calc Open-Cased 090629  
 Charted by: Depth in Feet scaled 1:240

0	GAMMA RAY (GAPI)	150	ABHV	0	MEL1.5 (Ohm-m)	40	
6	CALIPER (in)	16	10 (ft3)	0	0	MEL2.0 (Ohm-m)	40
0	MINMK	20	TBHV				
			0 (ft3)	10			





0	GAMMA RAY (GAPI)	150	ABHV	0	MEL1.5 (Ohm-m)	40
6	CALIPER (in)	16	10 (ft3)	0 0	MEL2.0 (Ohm-m)	40
0	MINMK	20	TBHV			

0 (13) 10