



Weatherford

DETAIL SECTION

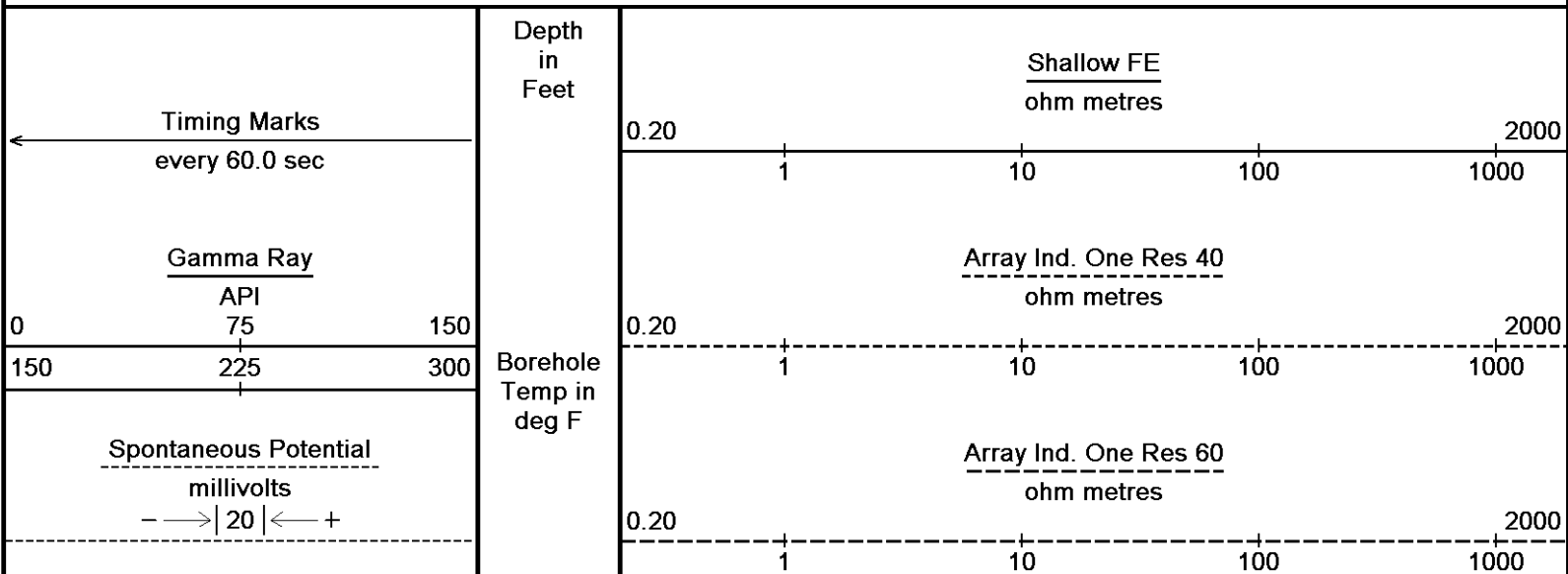
COMPANY SHAKESPEARE OIL COMPANY, INC.
WELL HOLIDAY #1-19
FIELD WILDCAT
PROVINCE/COUNTY GOVE
COUNTRY/STATE U.S.A. / KANSAS
LOCATION 335' FSL & 947' FWL
 NW SE SW SW

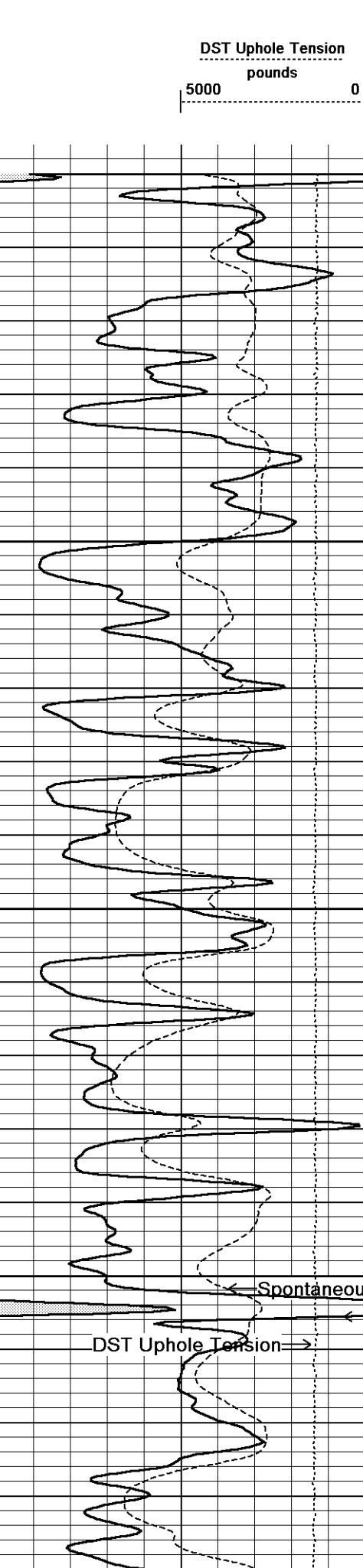
SEC	TWP	RGE	Other Services
19	13S	30W	
API Number	15-063-21989		
Permit Number			
Permanent Datum G.L., Elevation 2828 feet			
Log Measured From KB			
Drilling Measured From K.B.			
Date	08-FEB-2013		
Run Number	ONE		
Service Order	3537859		
Depth Driller	4620.00 feet		
Depth Logger	4619.00 feet		
First Reading	4619.00 feet		
Last Reading	3600.00 feet		
Casing Driller	225.00 feet		
Casing Logger	221.00 inches		
Bit Size	7.875		
Hole Fluid Type	CHEMICAL		
Density / Viscosity	9.20 lb/USg	53.00 lb/USg	
PH / Fluid Loss	9.50	9.50	
Sample Source	FLOWLINE		
Rm @ Measured Temp	1.15 @ 82.0	ohm-m	
Rmf @ Measured Temp	0.92 @ 82.0	ohm-m	
Rmc @ Measured Temp	1.38 @ 82.0	ohm-m	
Source Rmf / Rmc	CALC	CALC	
Rm @ BHT	0.82 @ 116.0	ohm-m	
Time Since Circulation	5 HOURS		
Max Recorded Temp	116.00	deg F	
Equipment / Base	13057	LIB	
Recorded By	LYNN SCOTT		
Witnessed By	TIM PRIEST		
JOB#	LB13-037		

Elevations:	feet
KB	2838.00
DF	2837.00
GL	2828.00

All interpretations are opinions based on inferences from electrical or other measurements and we cannot, and do not, guarantee the accuracy or correctness of any interpretations, and we shall not, except in the case of gross or wilful negligence on our part, be liable or responsible for any loss, costs, damages or expenses incurred or sustained by anyone resulting from any interpretation made by any of our officers, agents or employees. These interpretations are also subject to our general terms and conditions in our price schedule.

Depth Based Data - Maximum Sampling Increment 10.0cm
 Plotted on 08-FEB-2013 18:50
 Filename: C:\Minimus 13.04.8492\Data\Shakes...\Shakespeare Holaday #1-19_002 spooled section.dta
 Recorded on 08-FEB-2013 18:45
 System Versions: Logged with 13.04.8492 Plotted with 13.04.8492





Replay
Scale
1:240

3600

107°

3650

108°

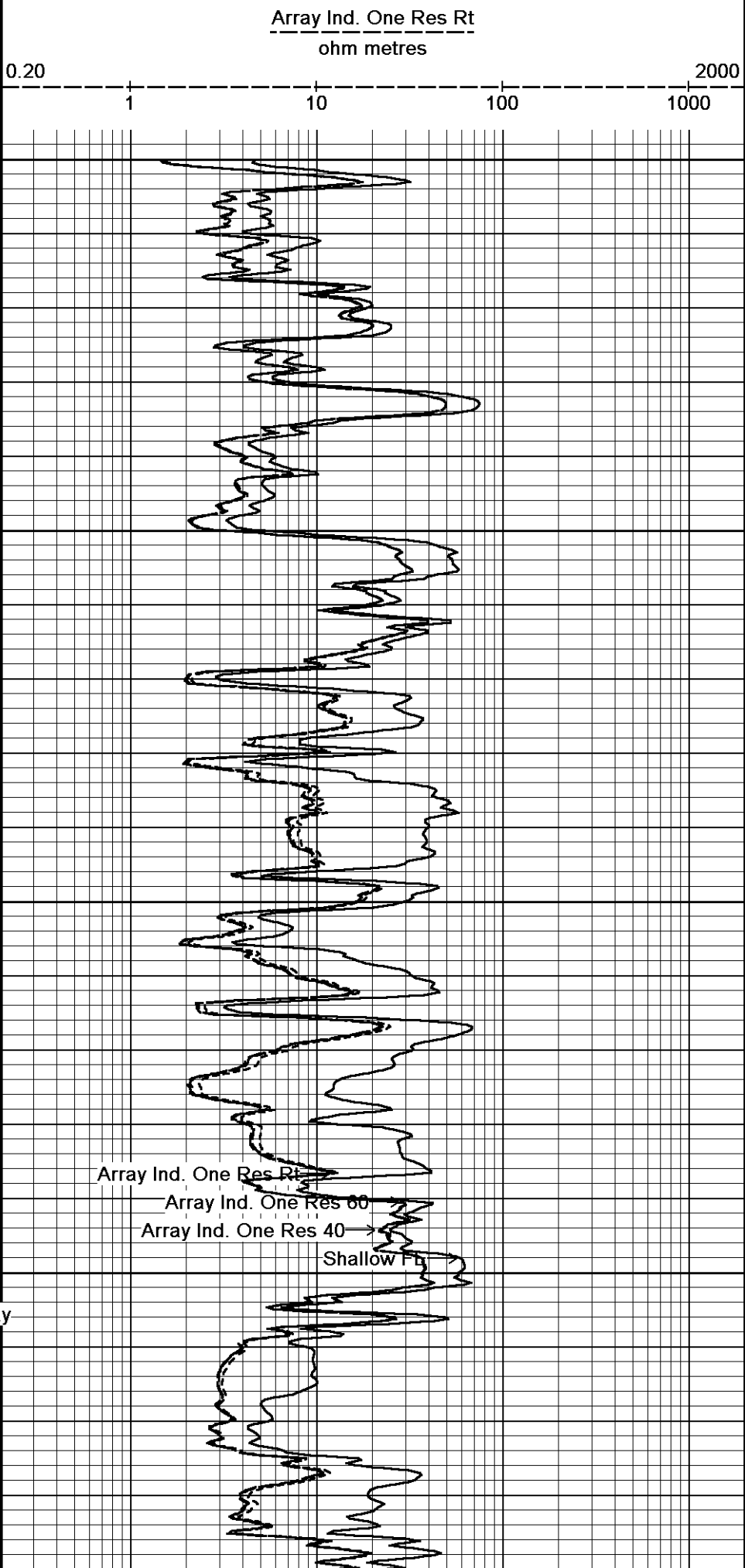
3700

109°

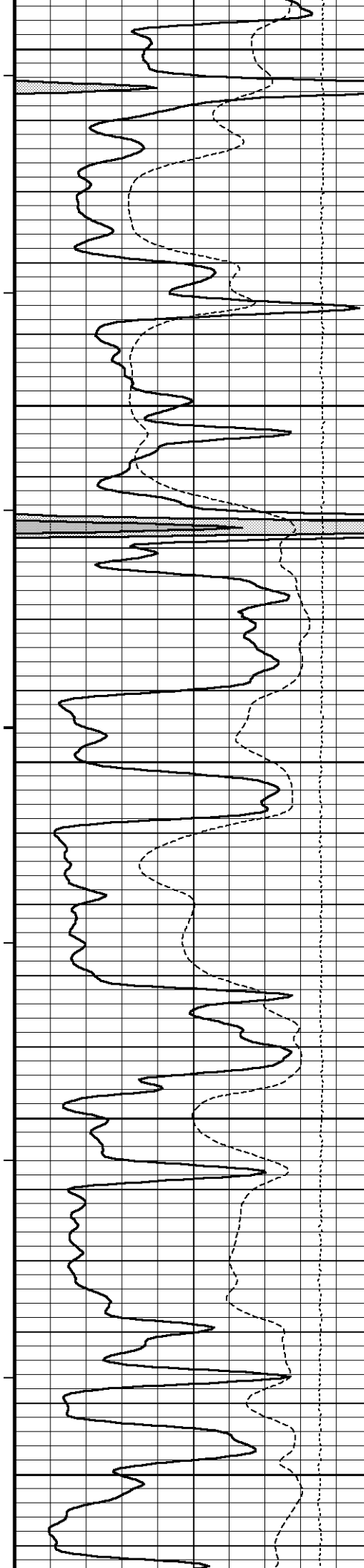
3750

Gamma Ray

109°



DST Uphole Tension →



3800

109°

3850

109°

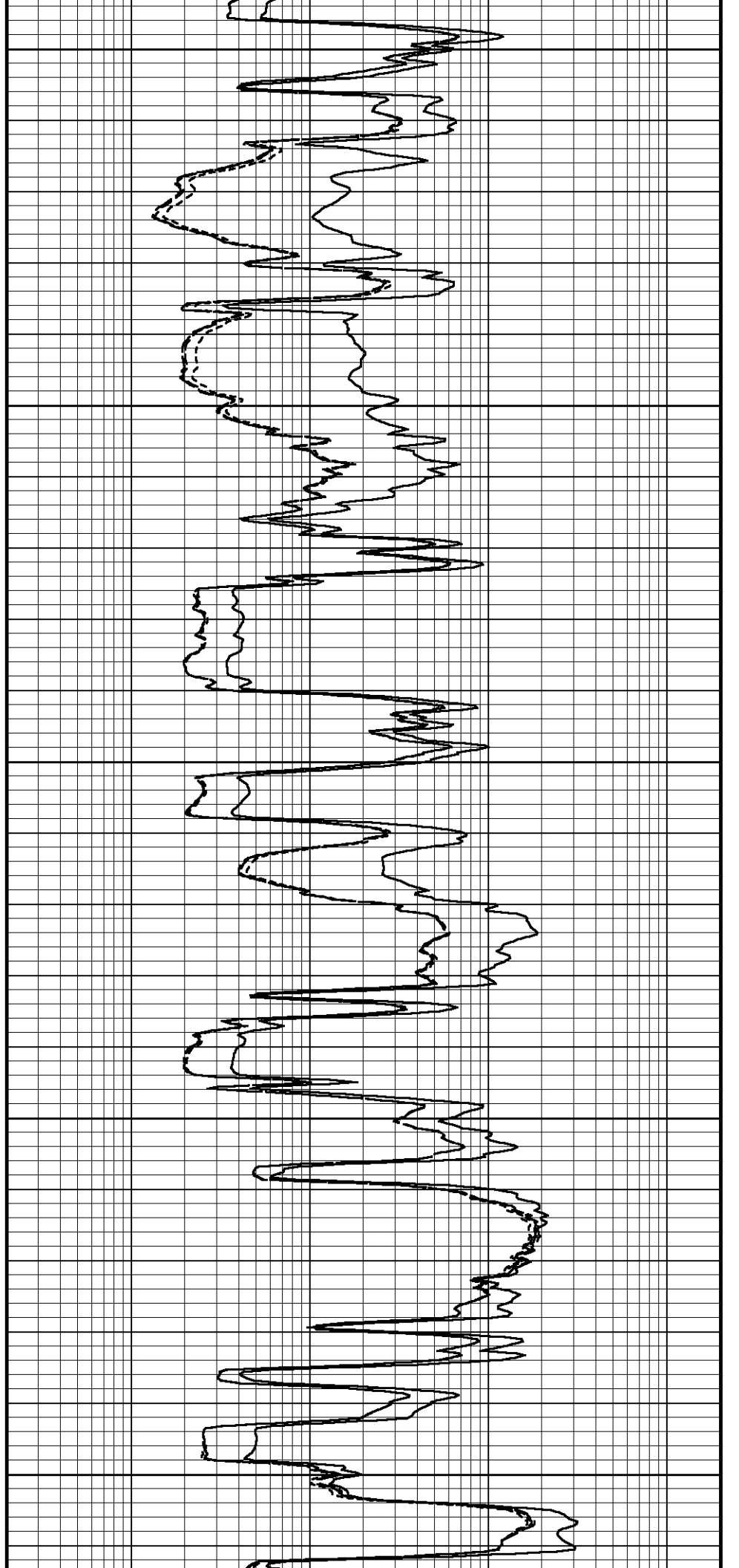
3900

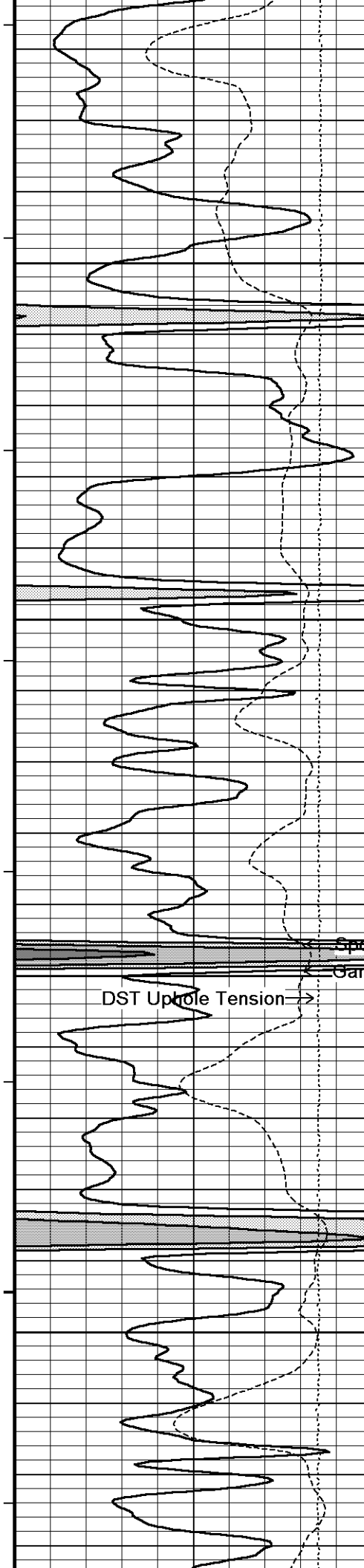
110°

3950

110°

4000





111°

4050

111°

4100

111°

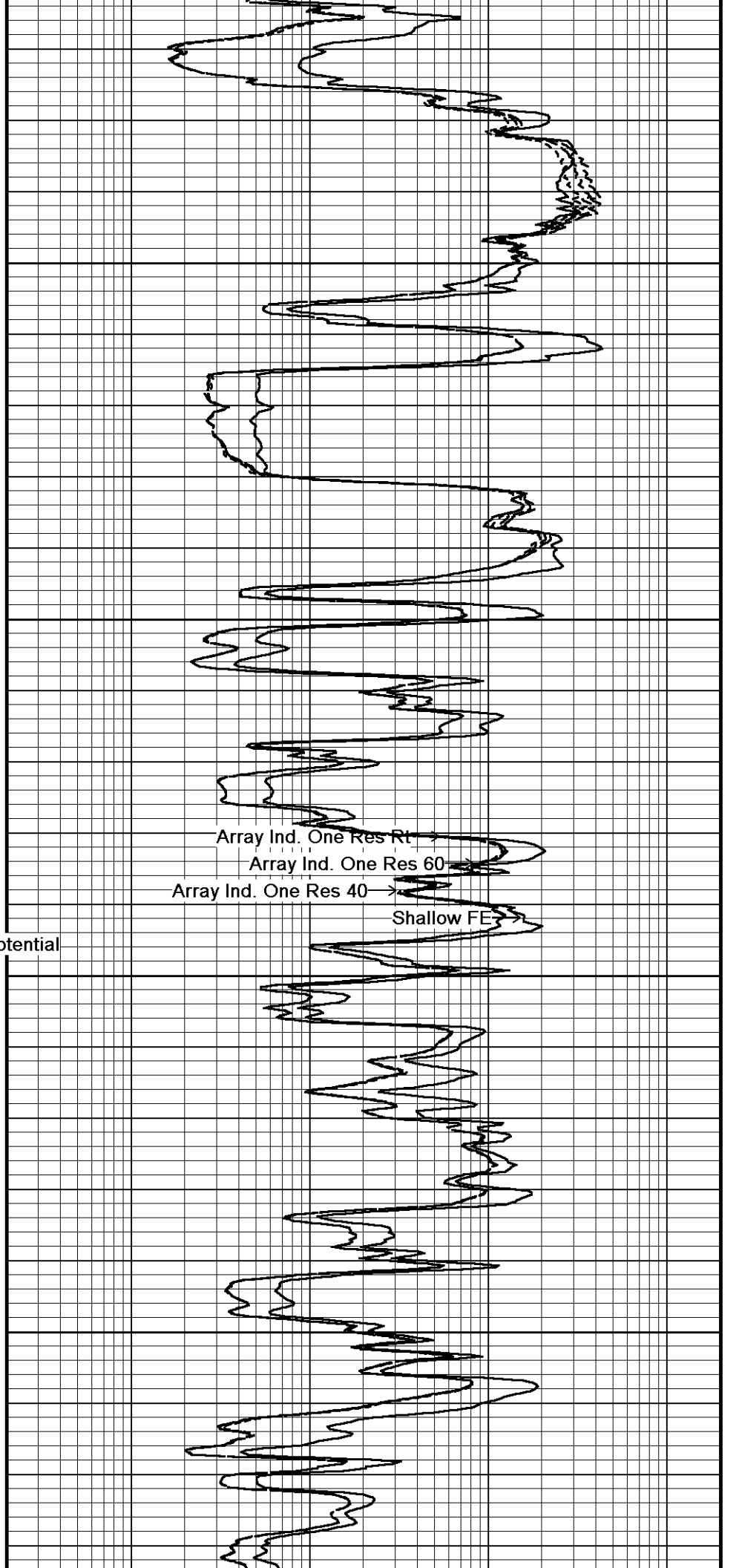
Spontaneous Potential

Gamma 4150

DST Up-hole Tension

111°

4200

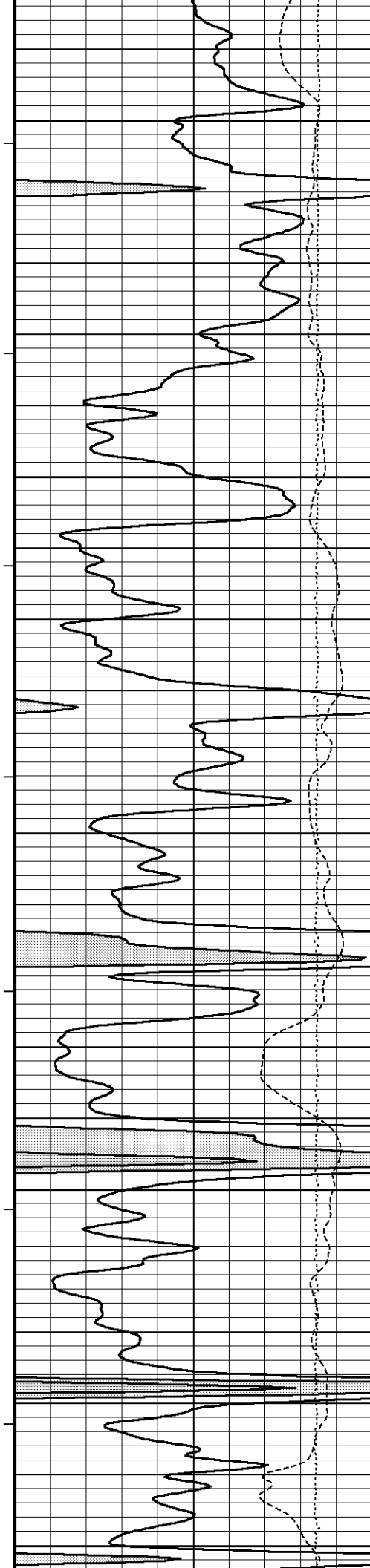


Array Ind. One Res Rt

Array Ind. One Res 60

Array Ind. One Res 40

Shallow FE



112°

4250

112°

4300

113°

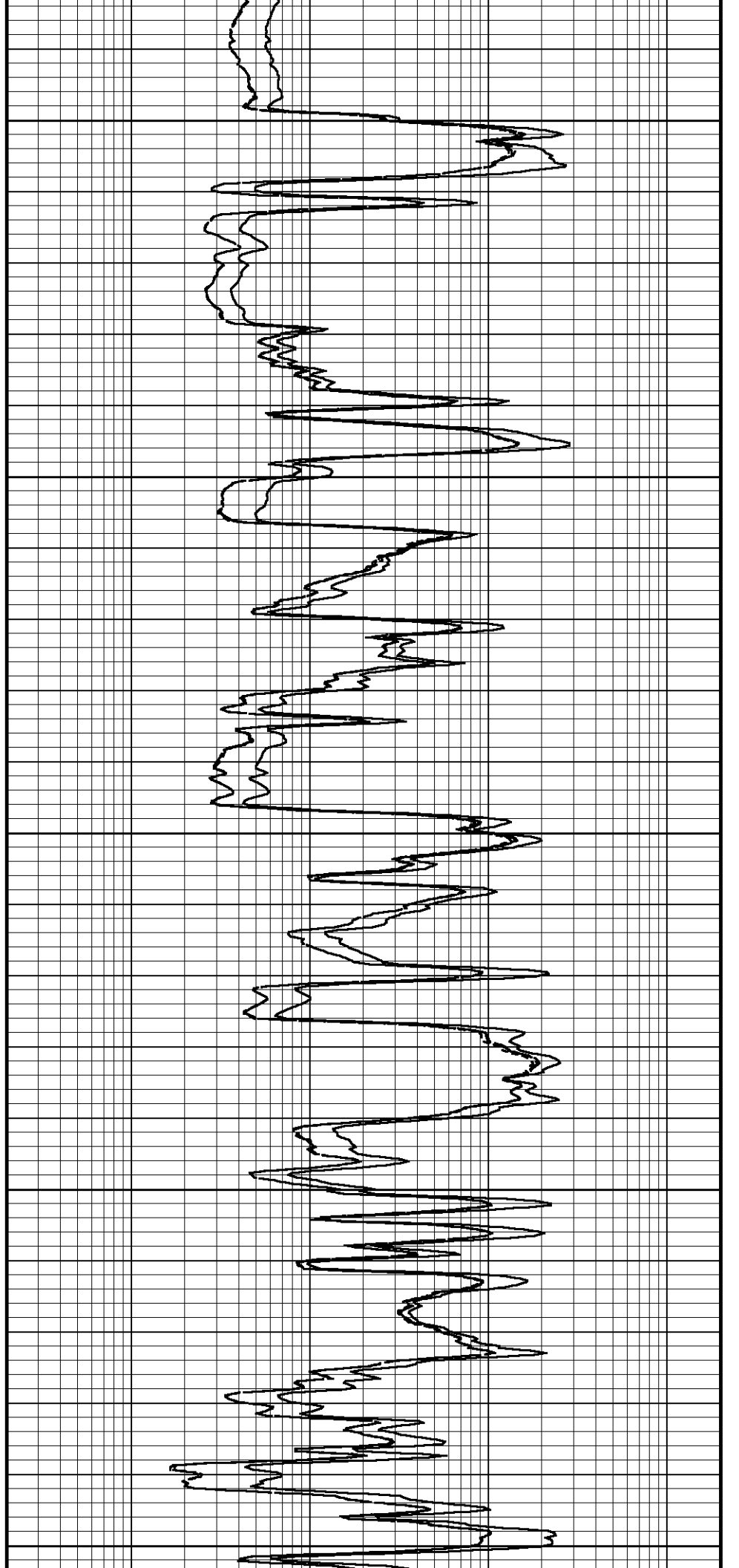
4350

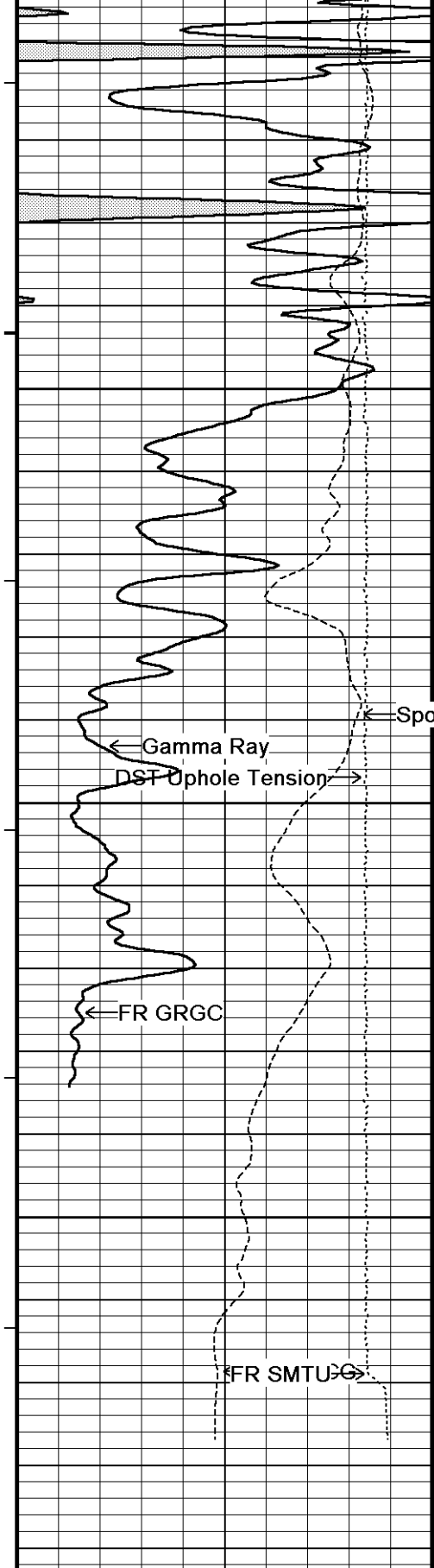
113°

4400

114°

4450





115°

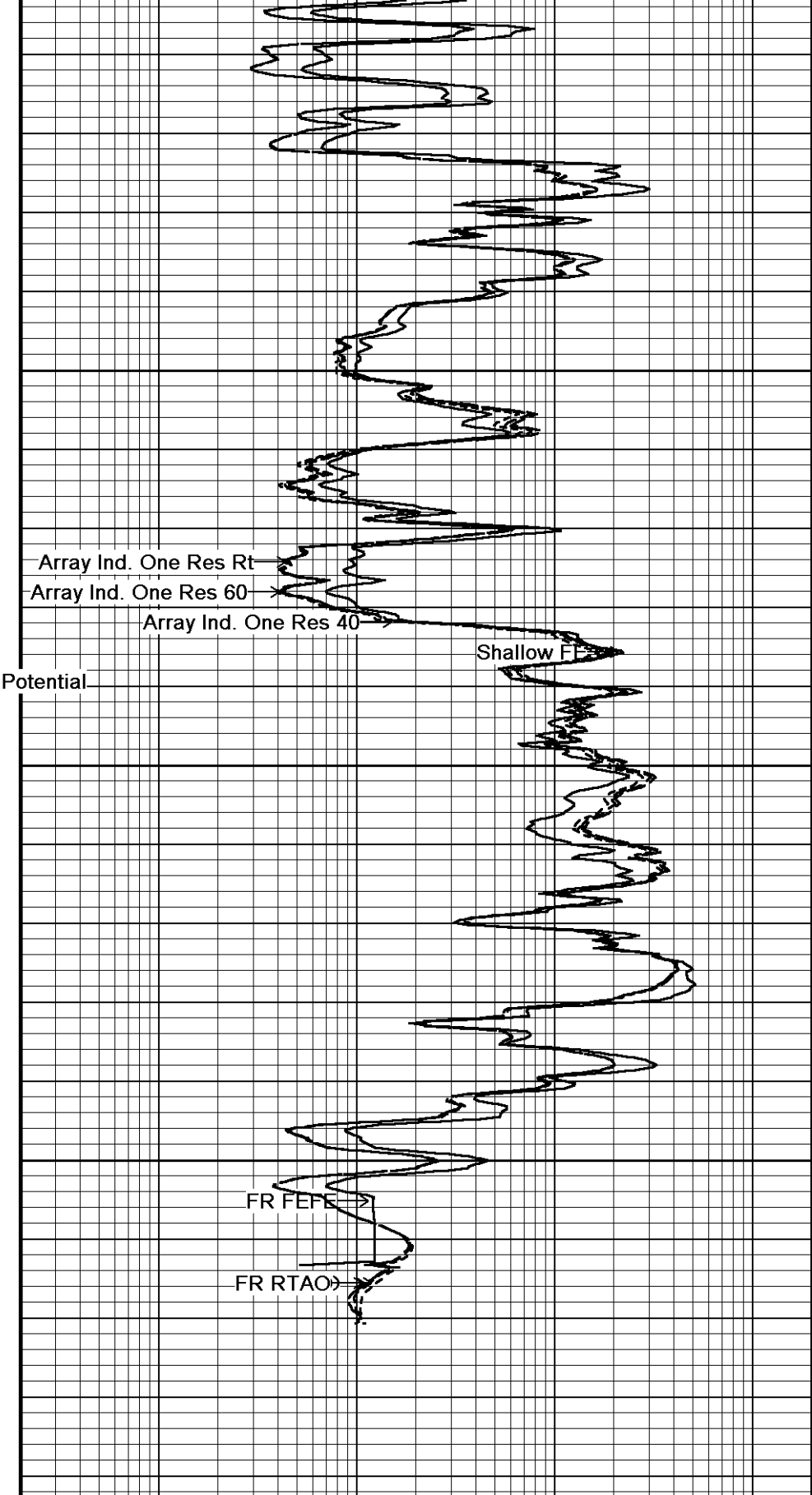
4500

116°

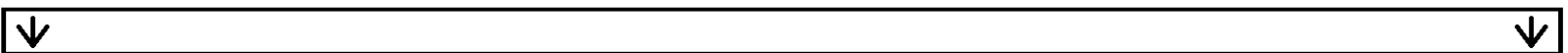
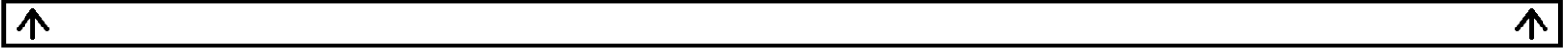
4550

4600

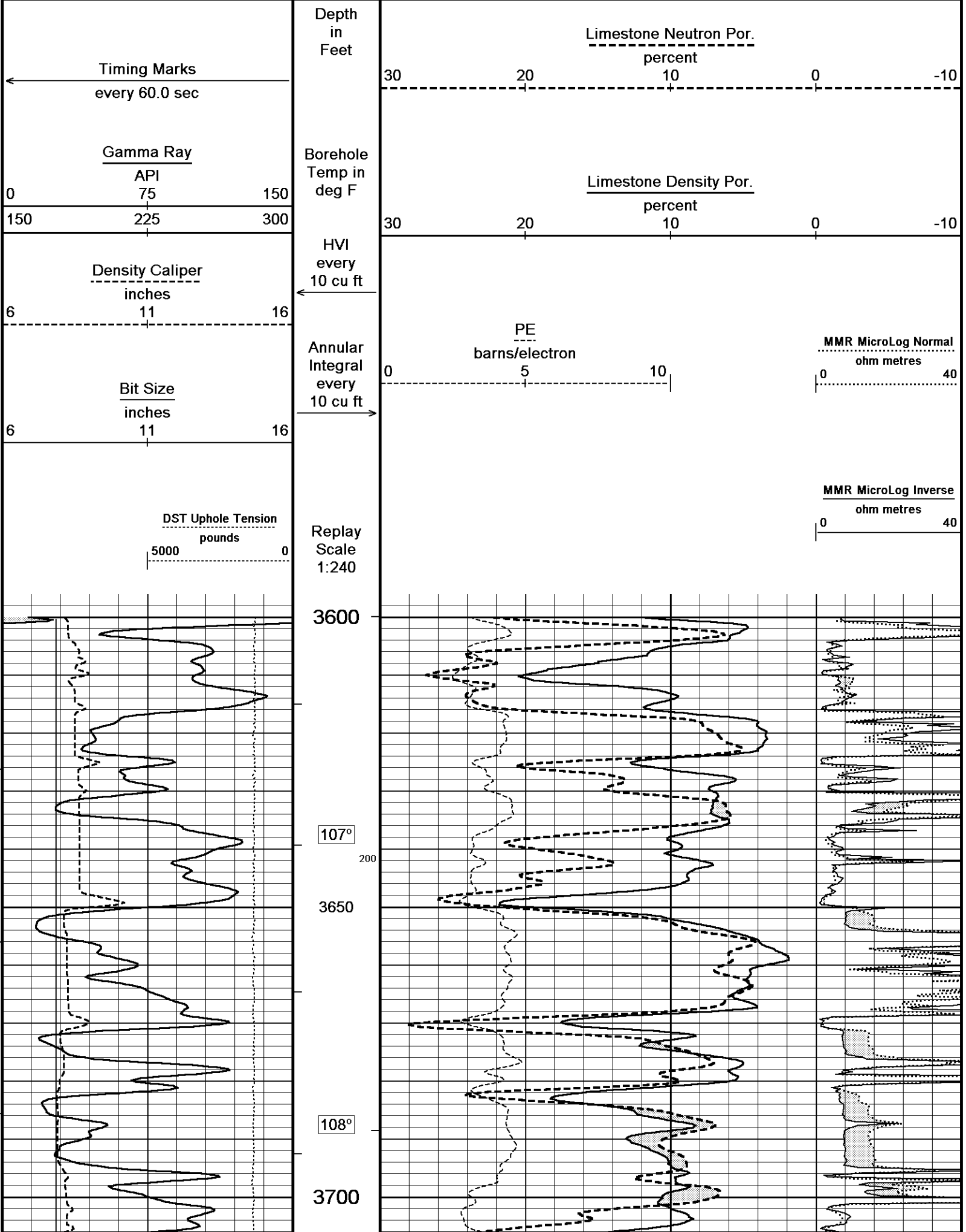
4640

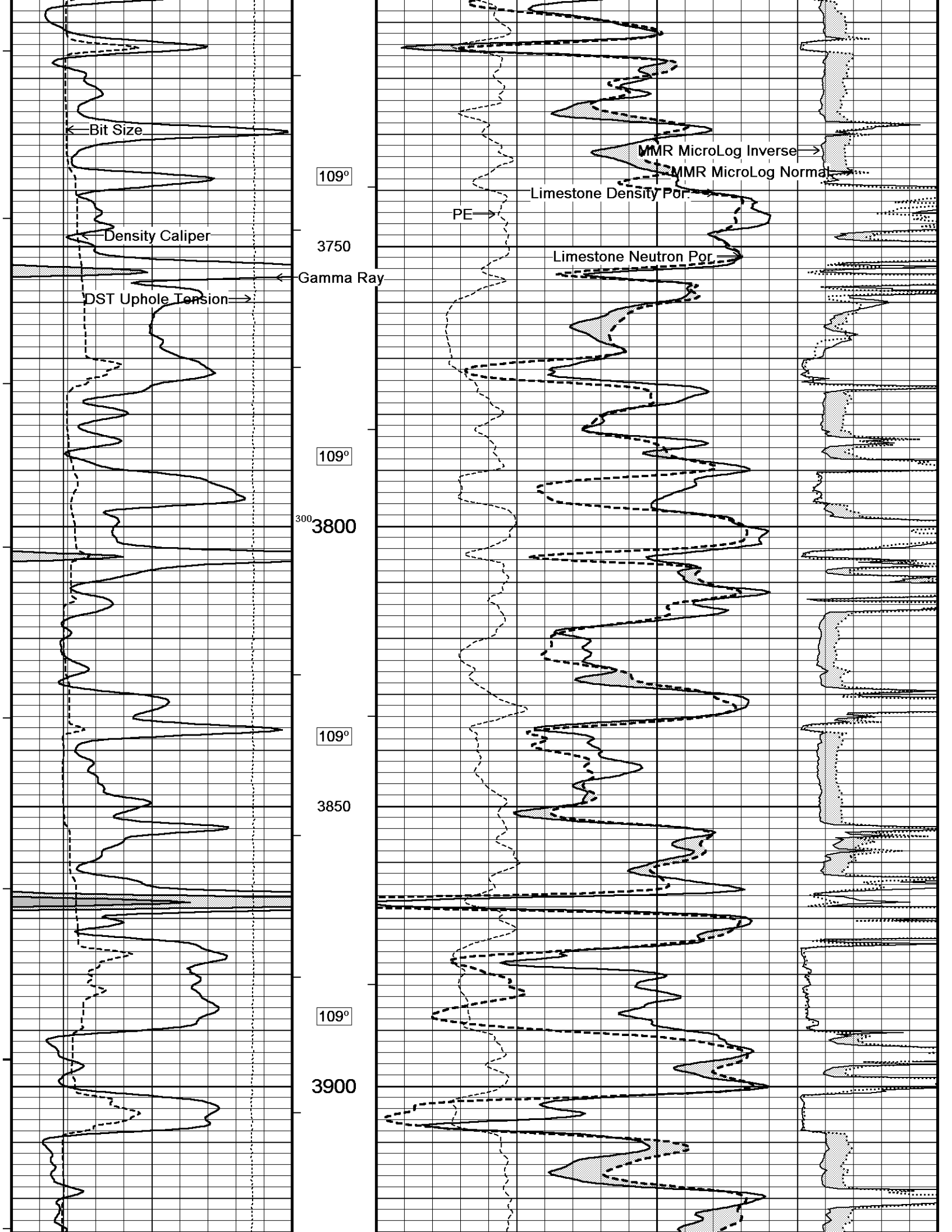


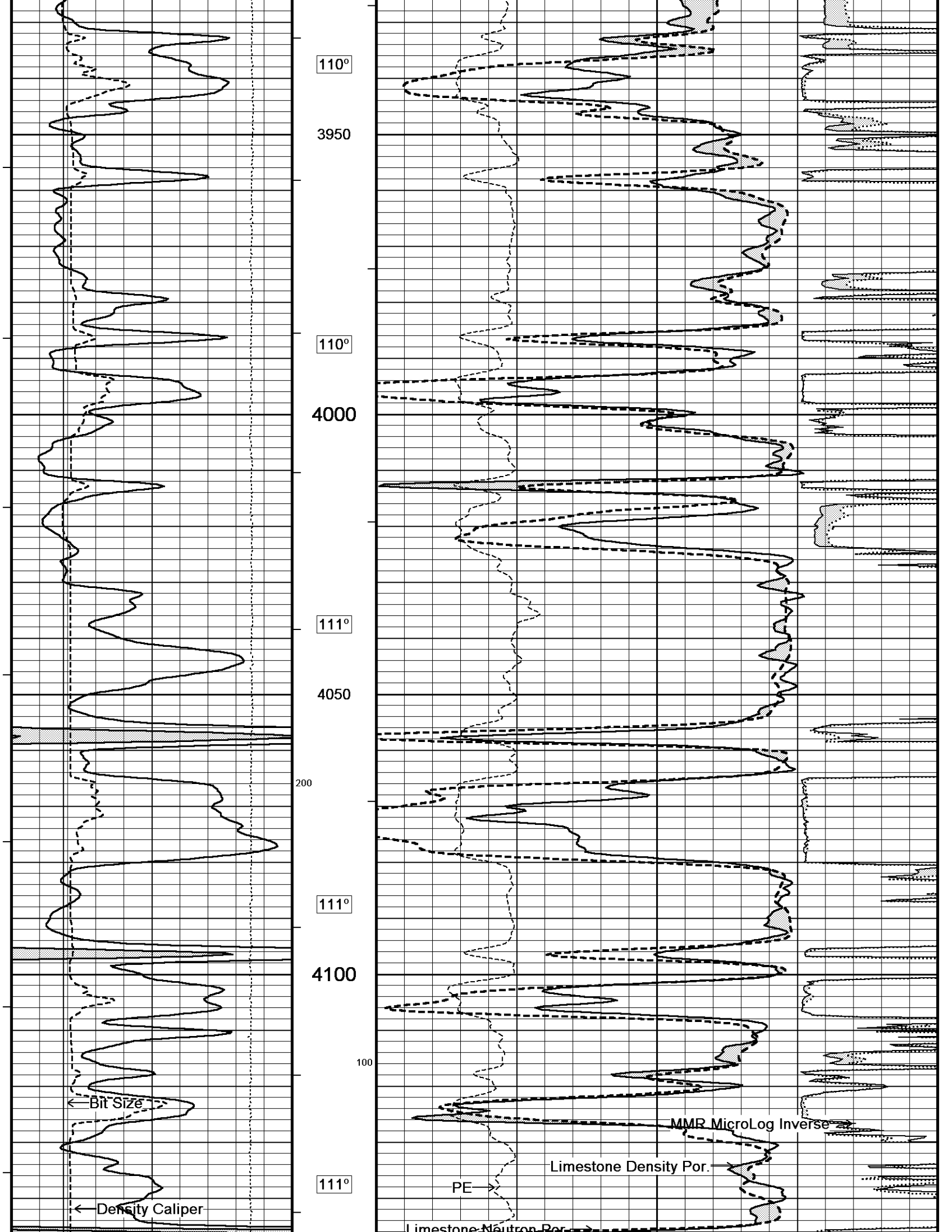
Depth Based Data - Maximum Sampling Increment 10.0cm Plotted on 08-FEB-2013 18:50
 Filename: C:\Minimus 13.04.8492\Data\Shakes...\Shakespeare Holaday #1-19_002 spooled section.dta Recorded on 08-FEB-2013 18:45
 System Versions: Logged with 13.04.8492 Plotted with 13.04.8492

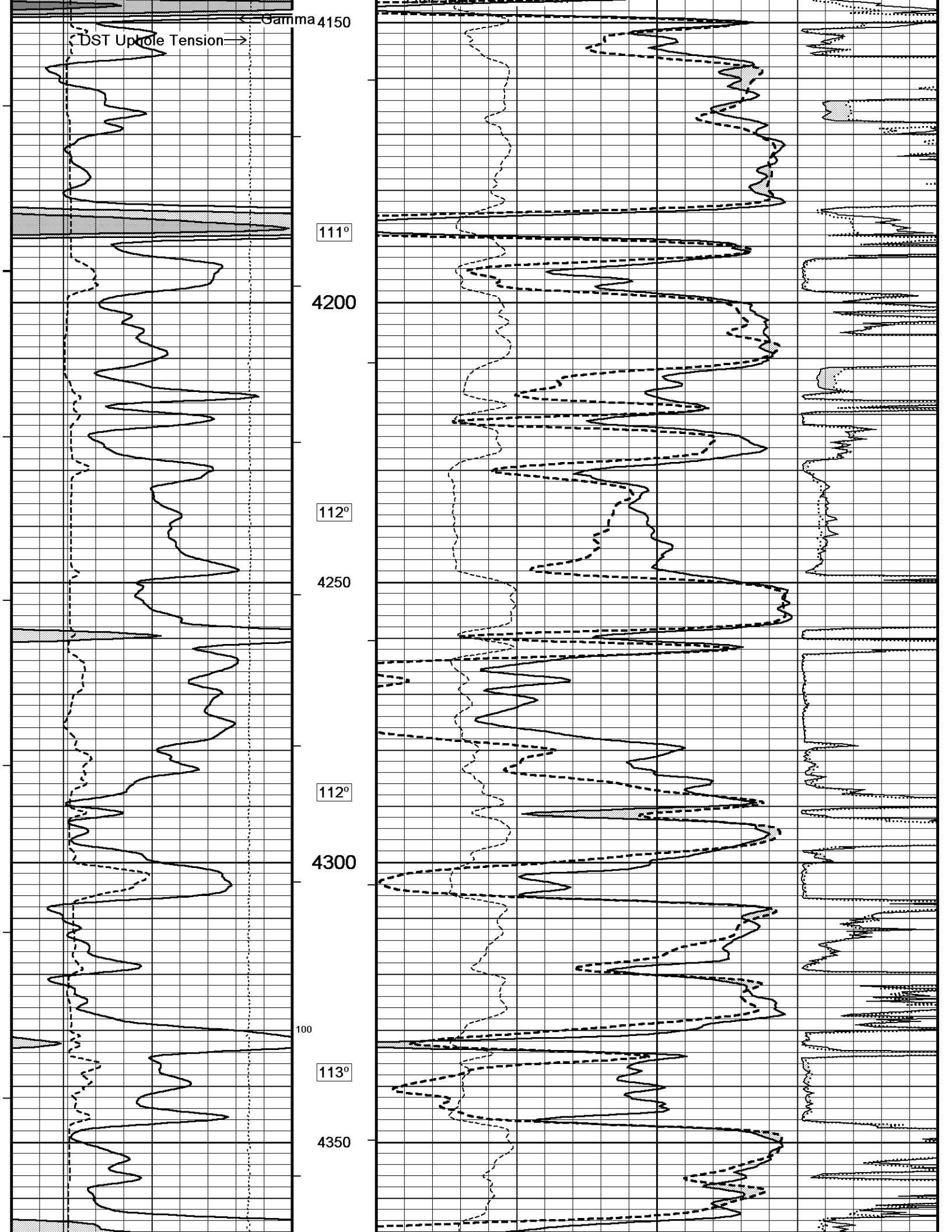


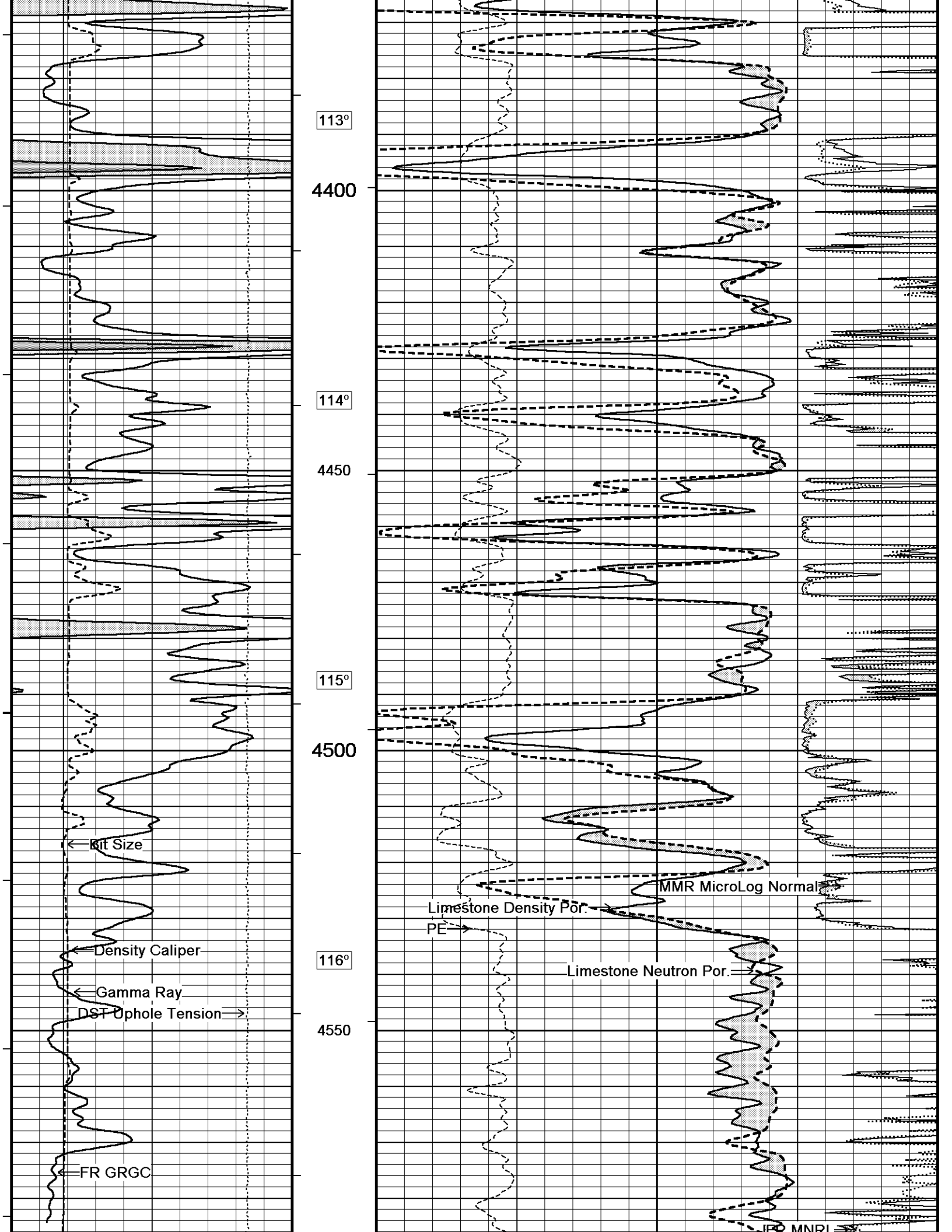
Depth Based Data - Maximum Sampling Increment 10.0cm Plotted on 08-FEB-2013 18:50

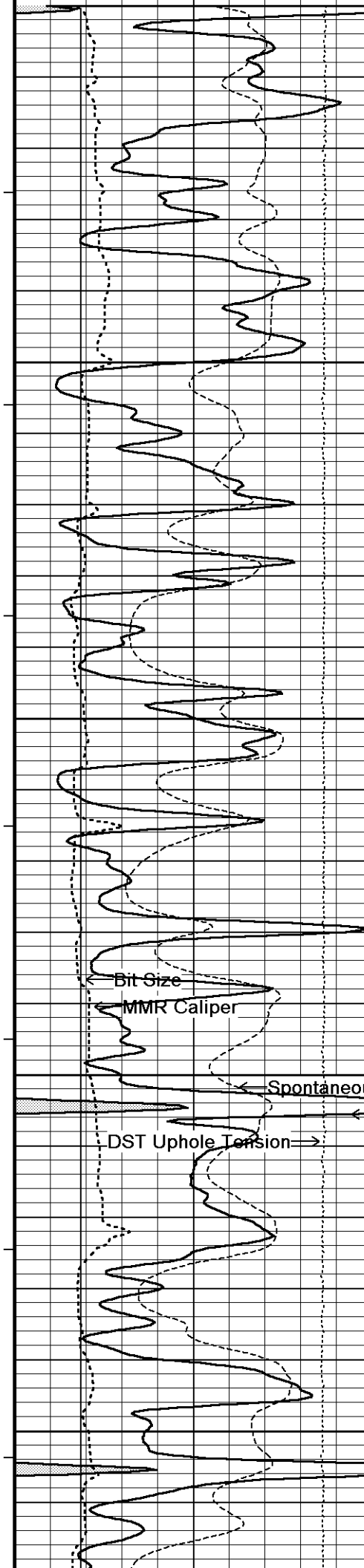












3600

107°

3650

108°

3700

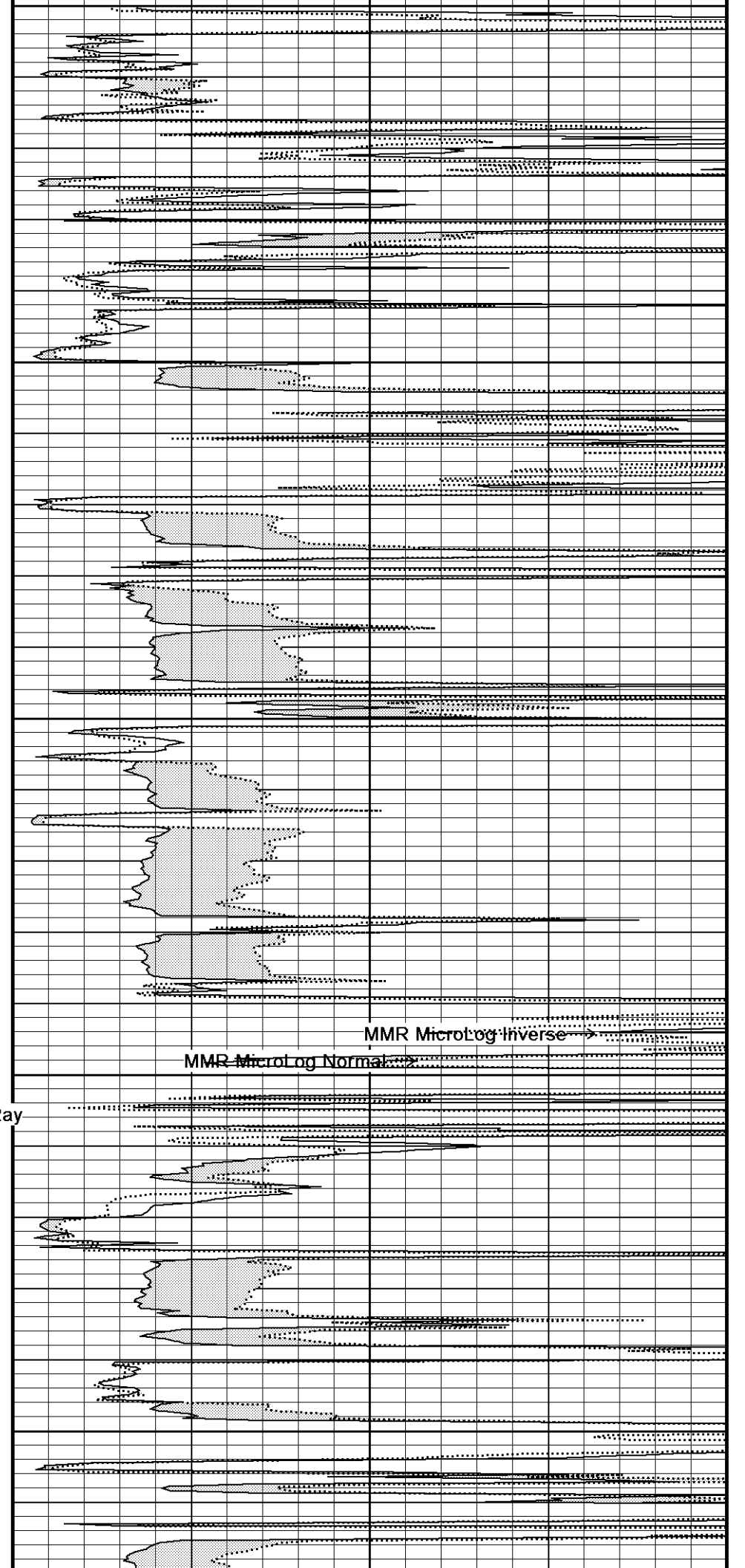
109°

3750

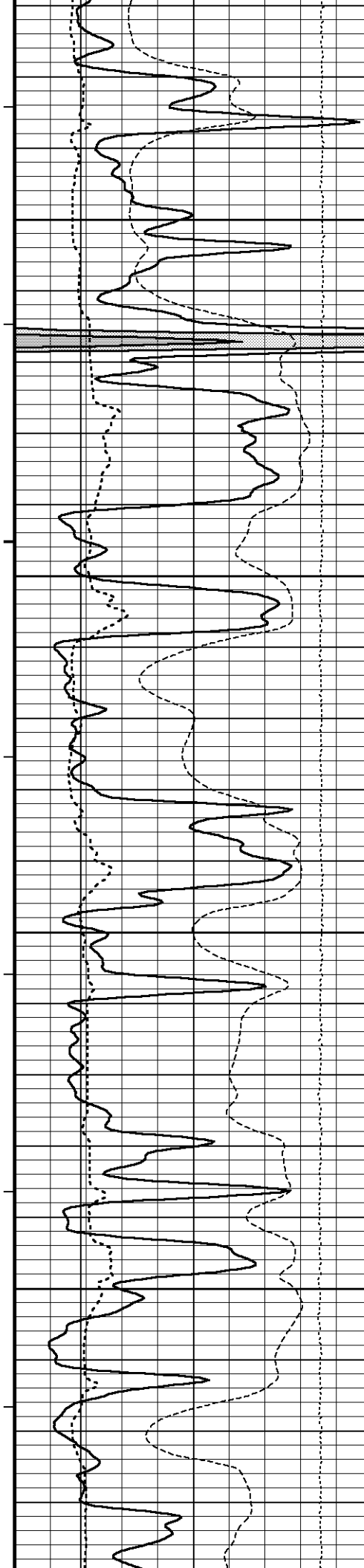
109°

3800

Spontaneous Potential
Gamma Ray



MMR Microlog Inverse
MMR Microlog Normal



109°

3850

109°

3900

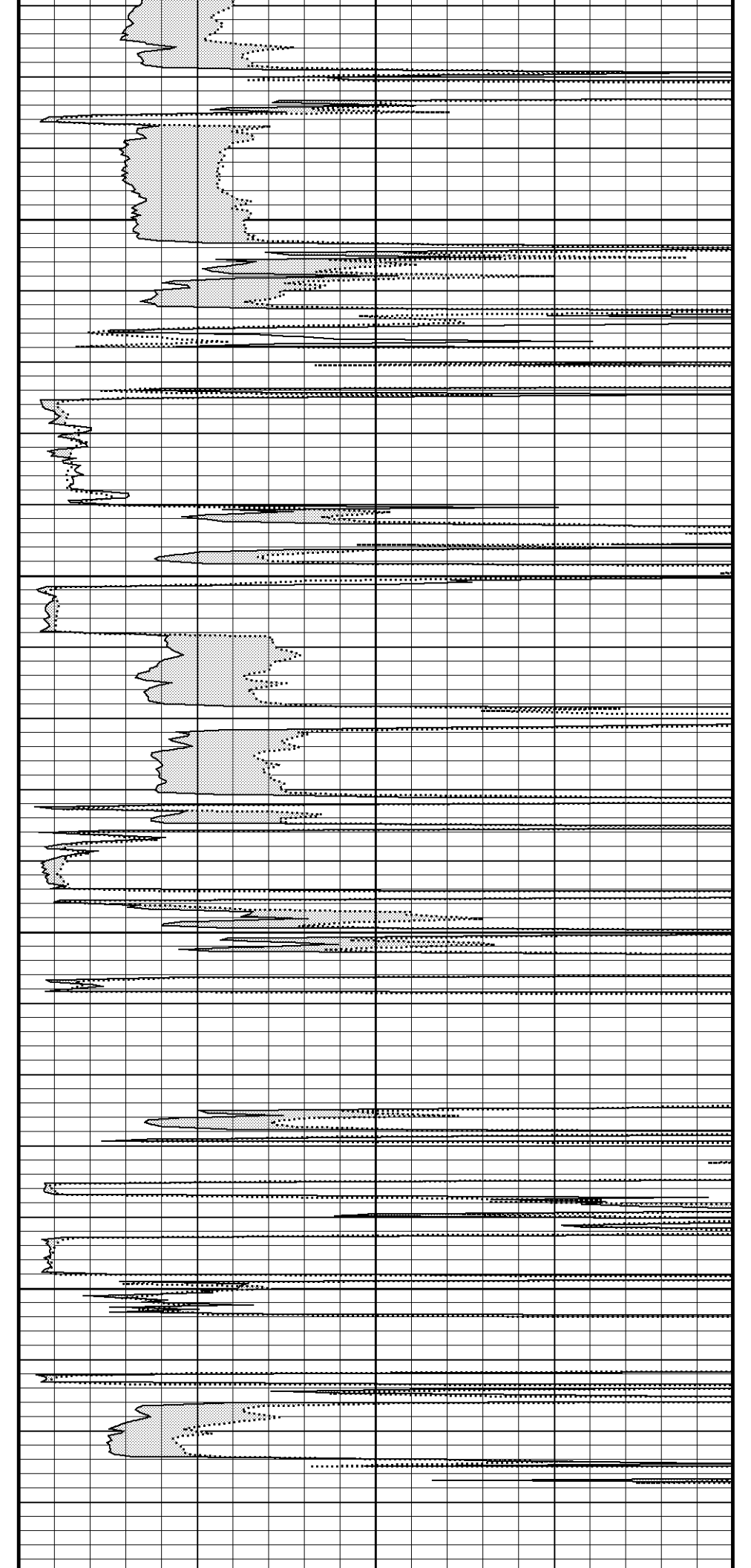
110°

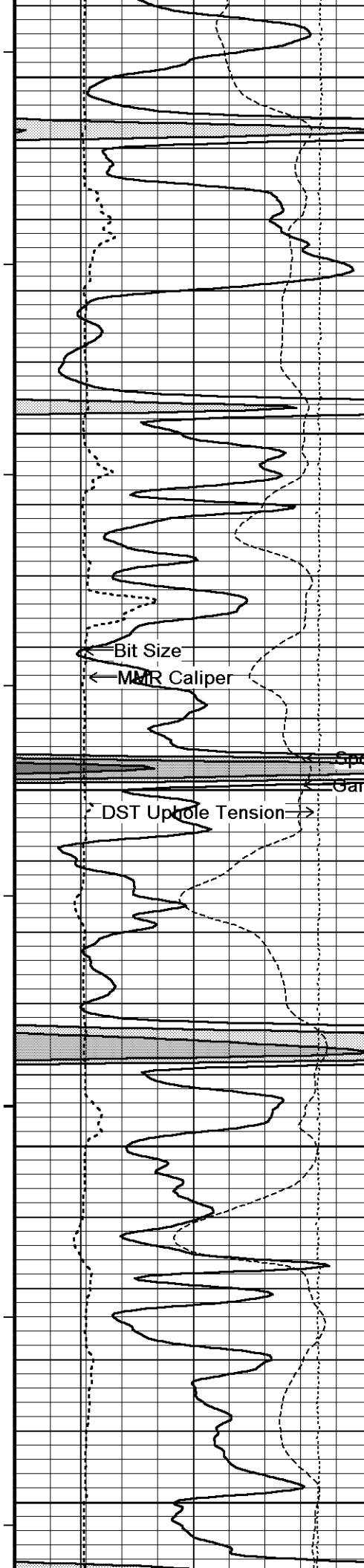
3950

110°

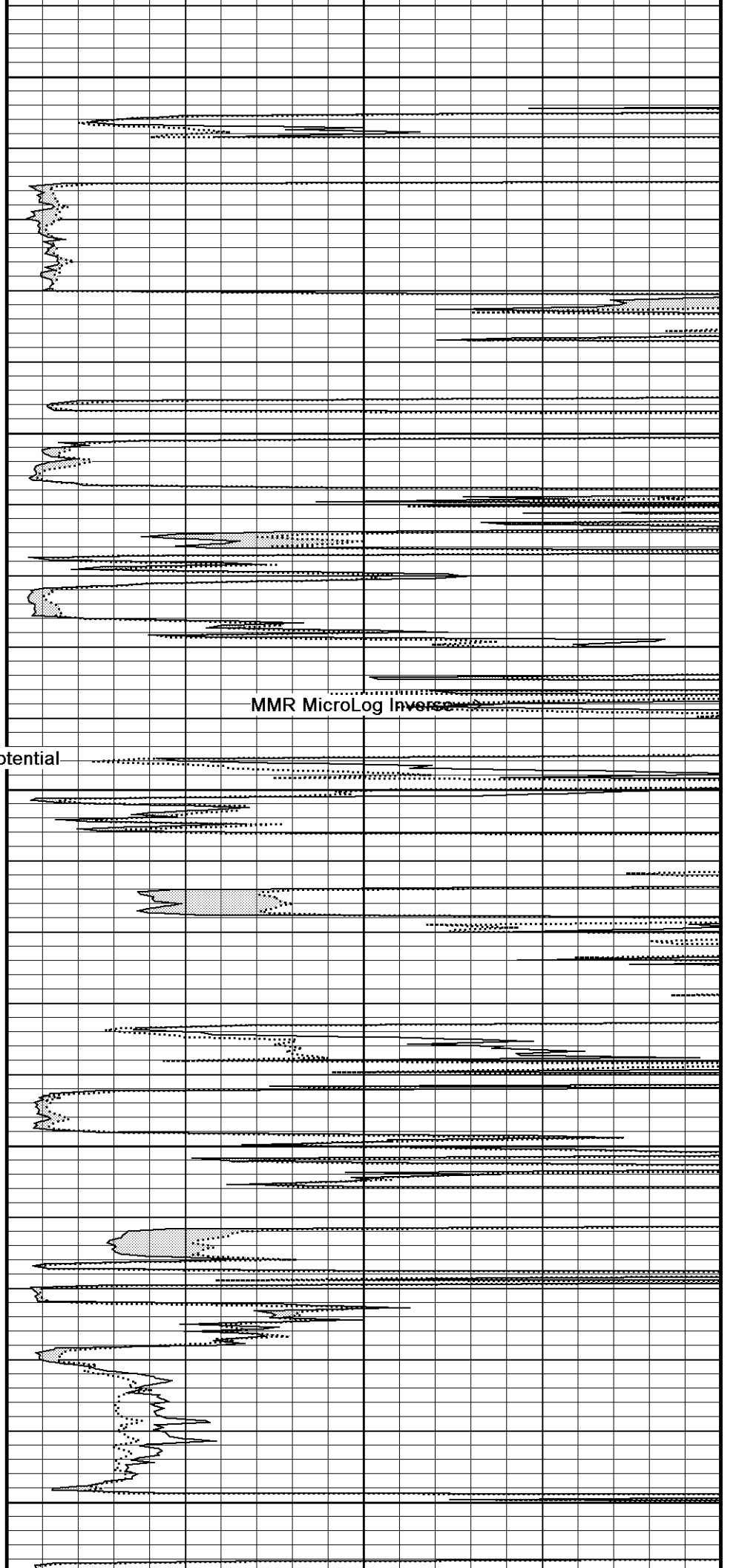
4000

111°

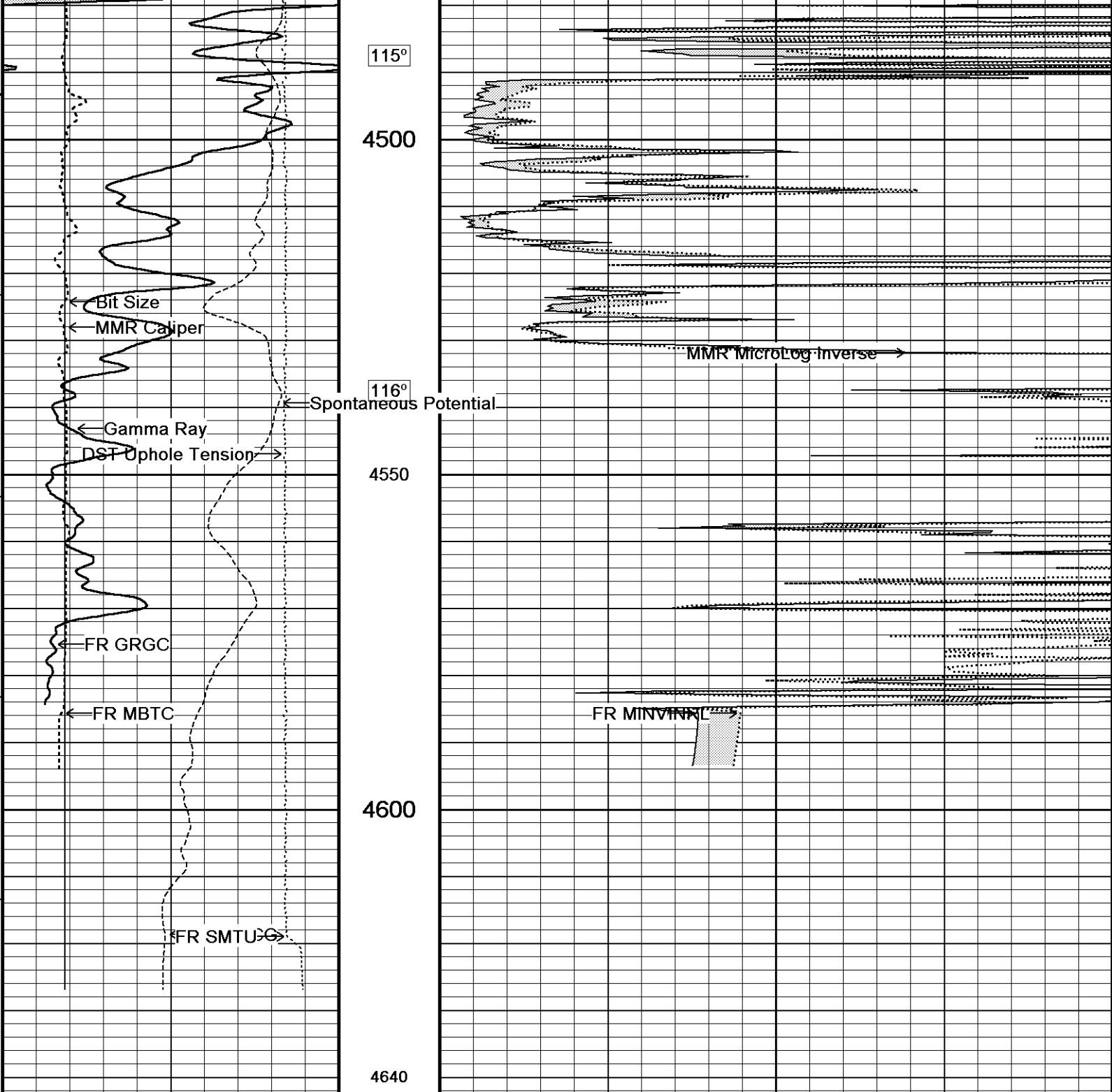




4050
111°
4100
111°
Spontaneous Potential
Gamma 4150
4200
111°
4250
112°



MMR MicroLog Inverse



Depth Based Data - Maximum Sampling Increment 10.0cm
 Plotted on 08-FEB-2013 18:50
 Filename: C:\Minimus 13.04.8492\Data\Shakes...\Shakespeare Holaday #1-19_002 spooled section.dta
 Recorded on 08-FEB-2013 18:45
 System Versions: Logged with 13.04.8492 Plotted with 13.04.8492

