



Weatherford[®]

**ARRAY INDUCTION
SHALLOW FOCUSED
ELECTRIC LOG**

COMPANY **SHAKESPEARE OIL COMPANY, INC.**
 WELL **HOLIDAY #1-19**
 FIELD **WILDCAT**
 PROVINCE/COUNTY **GOVE**
 COUNTRY/STATE **U.S.A. / KANSAS**
 LOCATION **335' FSL & 947' FWL
NW SE SW SW**

SEC **19** TWP **13S** RGE **30W** Other Services **MPL/MDN** MML
 API Number **15-063-21989**
 Permit Number
 Permanent Datum G.L., Elevation 2828 feet
 Log Measured From **KB**
 Drilling Measured From **K.B.**

Date	08-FEB-2013	Elevations:	feet
Run Number	ONE	KB	2838.00
Service Order	3537859	DF	2837.00
Depth Driller	4620.00	GL	2828.00
Depth Logger	4619.00		
First Reading	4616.00		
Last Reading	221.00		
Casing Driller	225.00		
Casing Logger	221.00		
Bit Size	7.875		
Hole Fluid Type	CHEMICAL		
Density / Viscosity	9.20 lb/USg	lb/USg	
PH / Fluid Loss	9.50	53.00	
Sample Source	FLOWLINE	9.50	
Rm @ Measured Temp	1.15 @ 82.0	ohm-m	
Rmf @ Measured Temp	0.92 @ 82.0	ohm-m	
Rmc @ Measured Temp	1.38 @ 82.0	ohm-m	
Source Rmf / Rmc	CALC	CALC	
Rm @ BHT	0.82 @ 116.0	ohm-m	
Time Since Circulation	5 HOURS		
Max Recorded Temp	116.00	deg F	
Equipment / Base	13057	LIB	
Recorded By	LYNN SCOTT		
Witnessed By	TIM PRIEST		
IOB#	LB13-037		

BOREHOLE RECORD

Last Edited: 08-FEB-2013 15:08

Bit Size inches	Depth From feet	Depth To feet
7.875	225.00	4620.00

CASING RECORD

Type	Size inches	Depth From feet	Shoe Depth feet	Weight pounds/ft
SURFACE	8.625	0.00	225.00	24.00

REMARKS

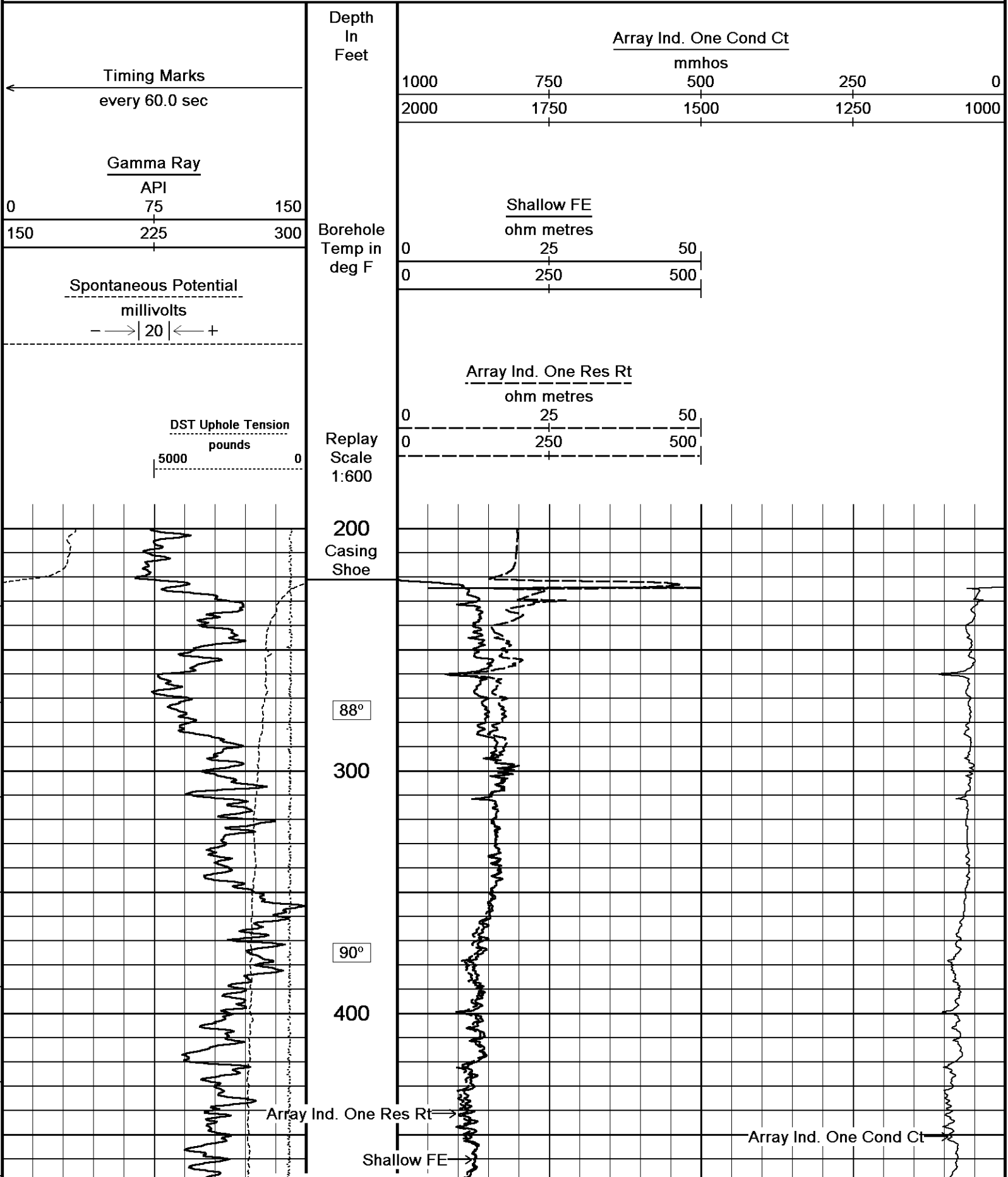
Tools Ran: MCG, MML, MDN, MPD, MFE, MAI ran in combination.
 Hardware Used: MDN Dual bowspring used. MPD 8 inch profile plate used. MAI and MFE 0.5 Inch standoffs used.
 2.71 g/cc Limestone Density Matrix used to calculate porosity.
 All intervals logged and scaled per customer's request.
 Tight pulls, washouts and borehole rugosity will affect data quality.
 Total hole volume from TD to Surface Casing= 1880 cu. ft.
 Annular volume with 5.5 inch production casing from TD to 3600 ft.= 210 cu. ft.
 Service order: #3537859
 Rig: HD #2
 Engineer: L. Scott
 Operator(s): K. Rinehart

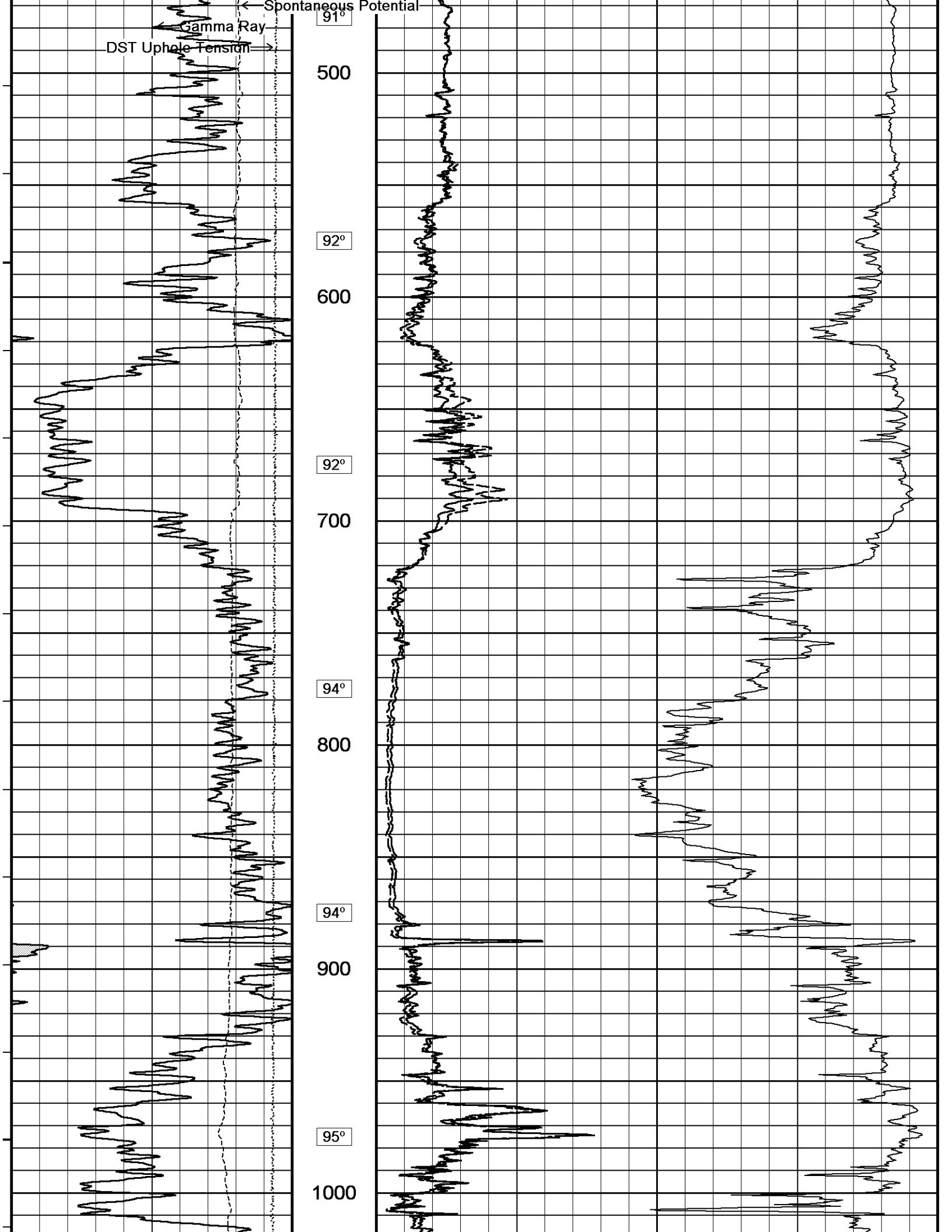
Software duplicates the pH value onto the fluid loss. The fluid loss is 7.2

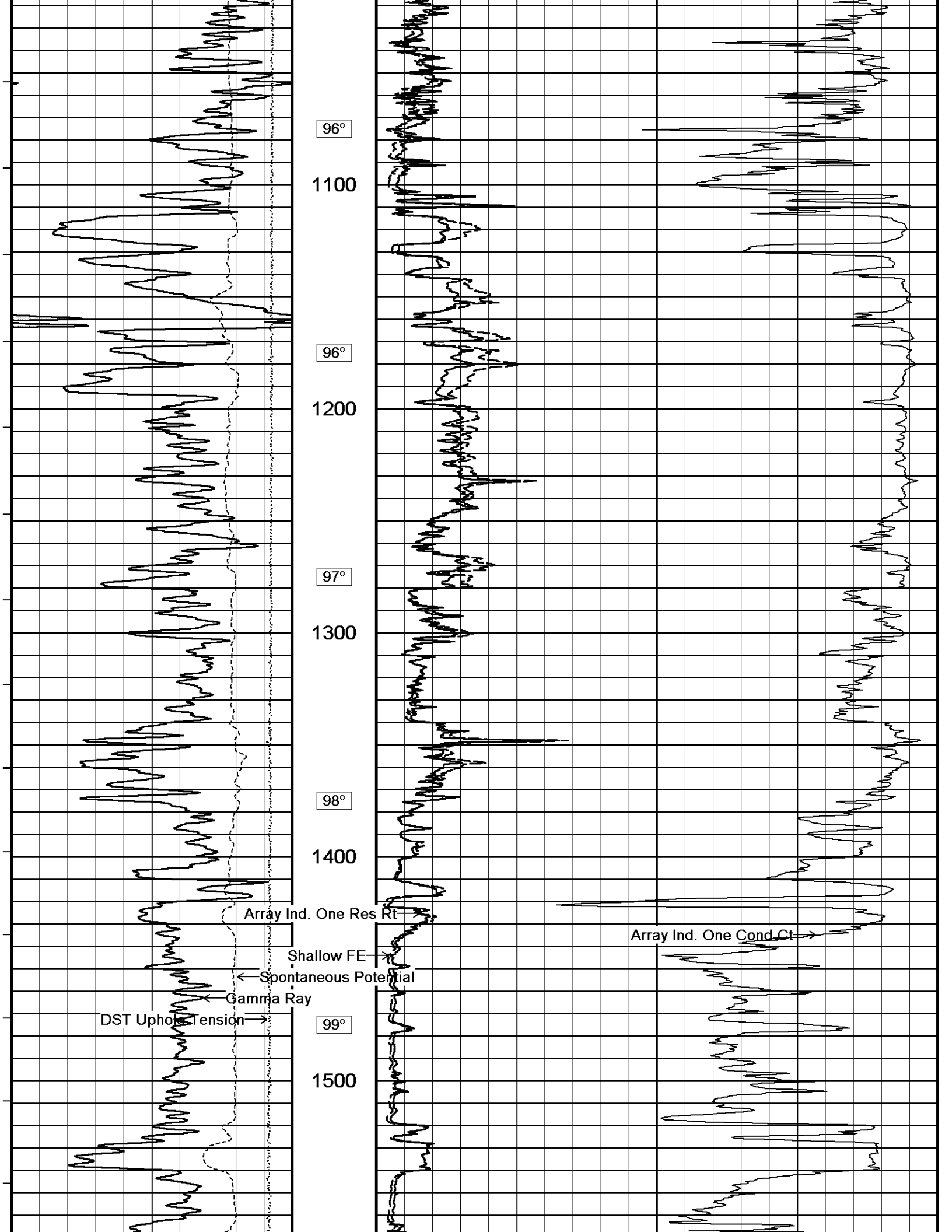
All interpretations are opinions based on inferences from electrical or other measurements and we cannot, and do not, guarantee the accuracy or correctness of any interpretations, and we shall not, except in the case of gross or wilful negligence on our part, be liable or responsible for any loss, costs, damages or expenses incurred or sustained by anyone resulting from any interpretation made by any of our officers, agents or

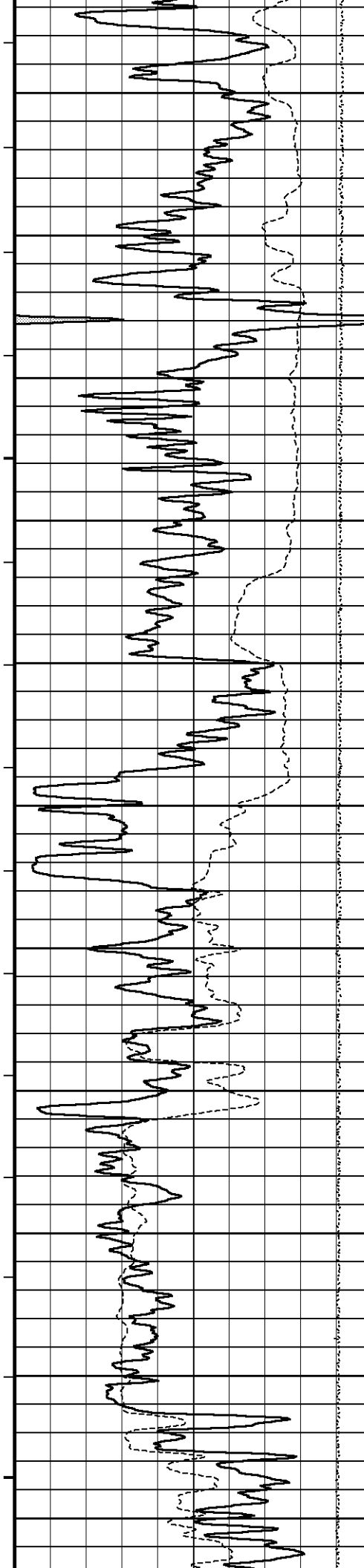
2 INCH MAIN

Depth Based Data - Maximum Sampling Increment 10.0cm Plotted on 08-FEB-2013 20:24
 Filename: C:\Minimus 13.04.8492\Data\Shakespeare Holaday #...\Shakespeare Holaday #1-19_002.dta Recorded on 08-FEB-2013 18:05
 System Versions: Logged with 13.04.8492 Plotted with 13.04.8492









99°

1600

100°

1700

100°

1800

101°

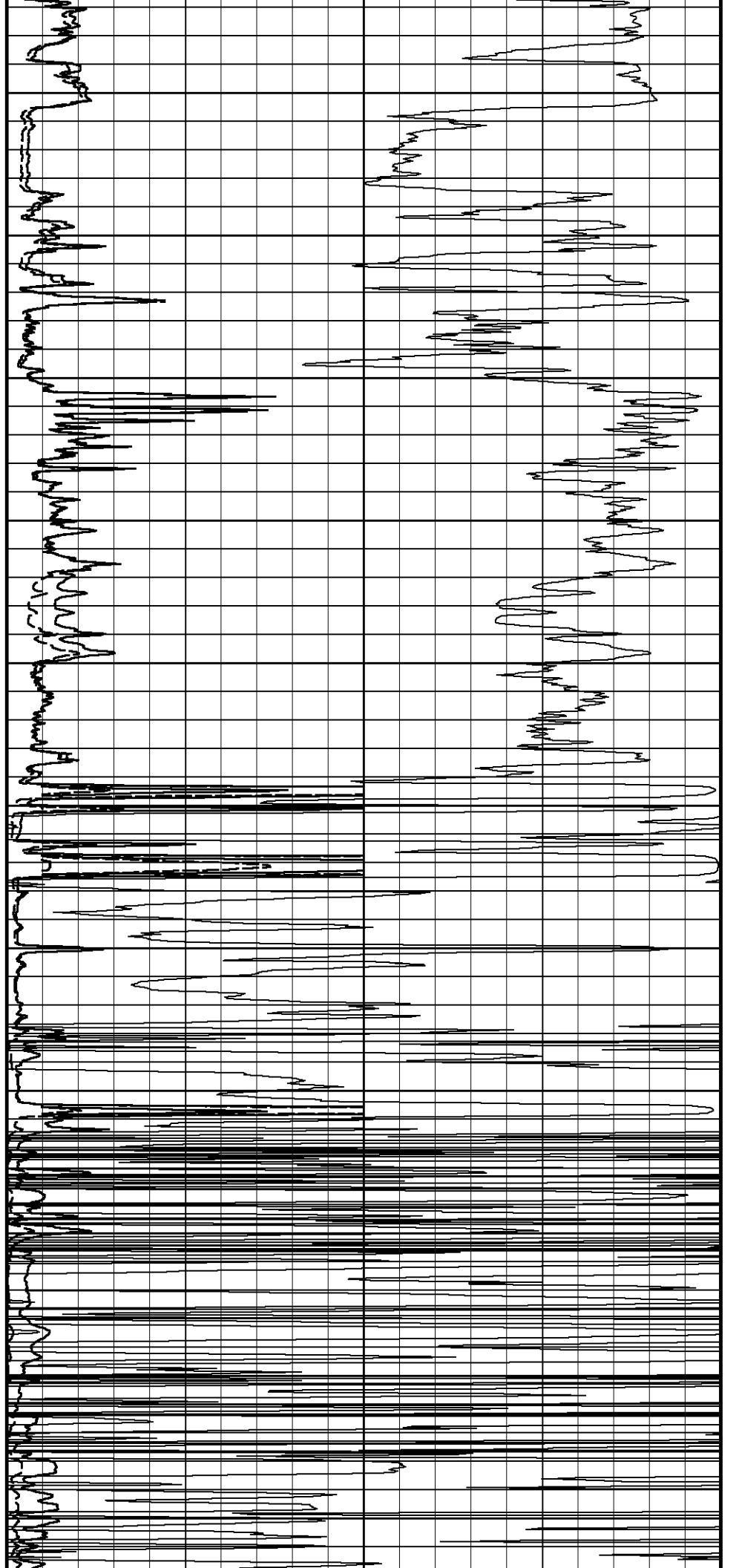
1900

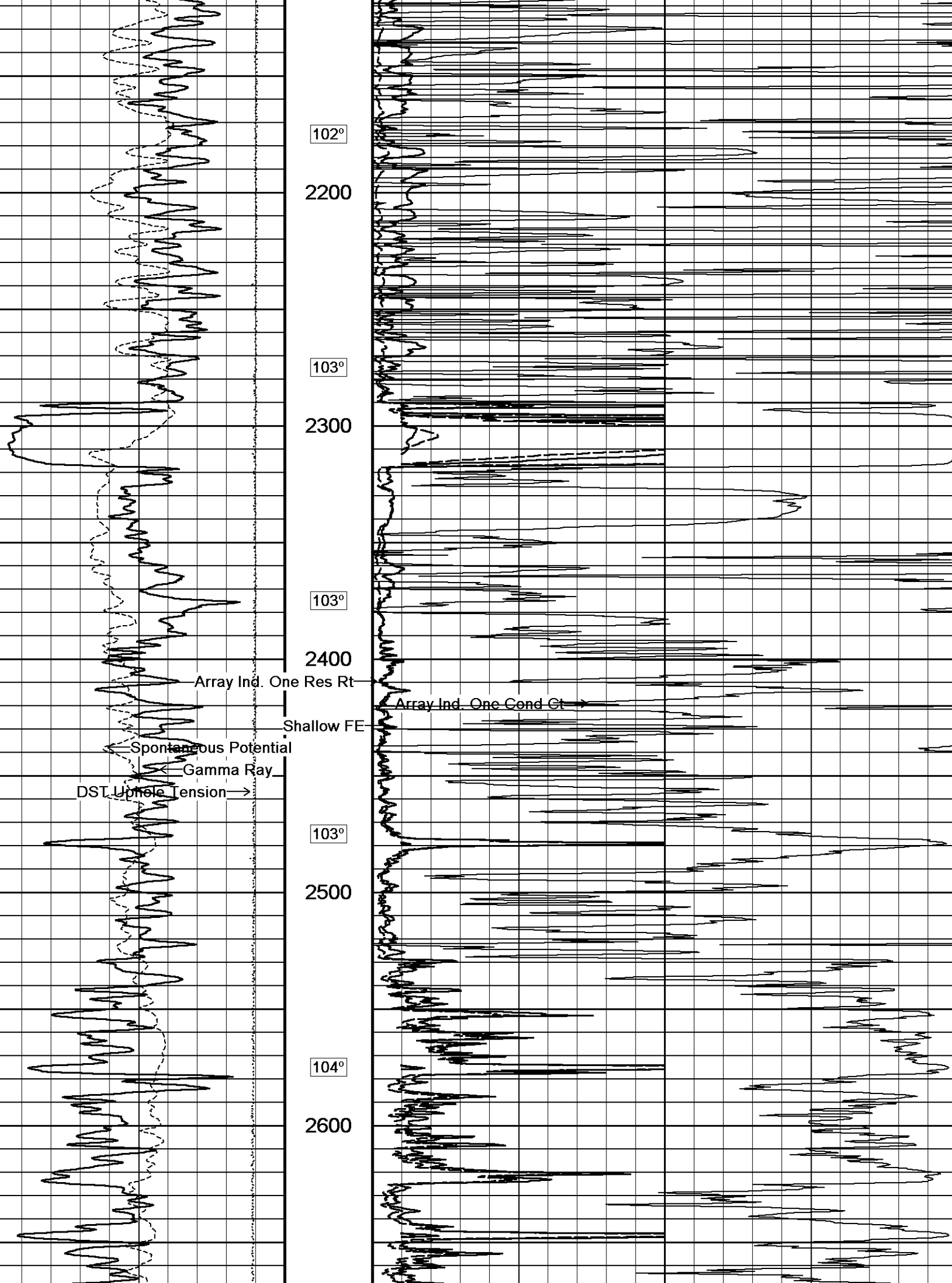
101°

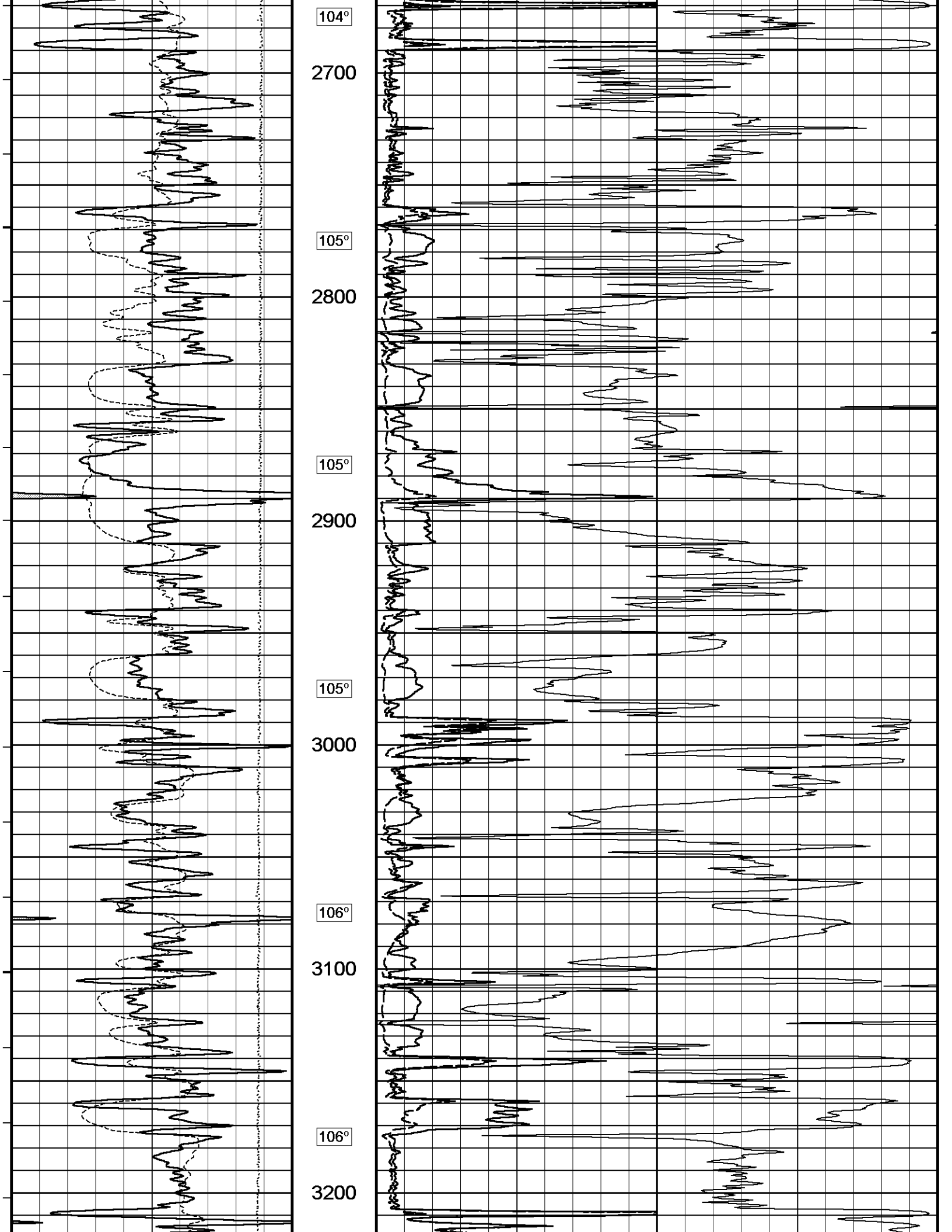
2000

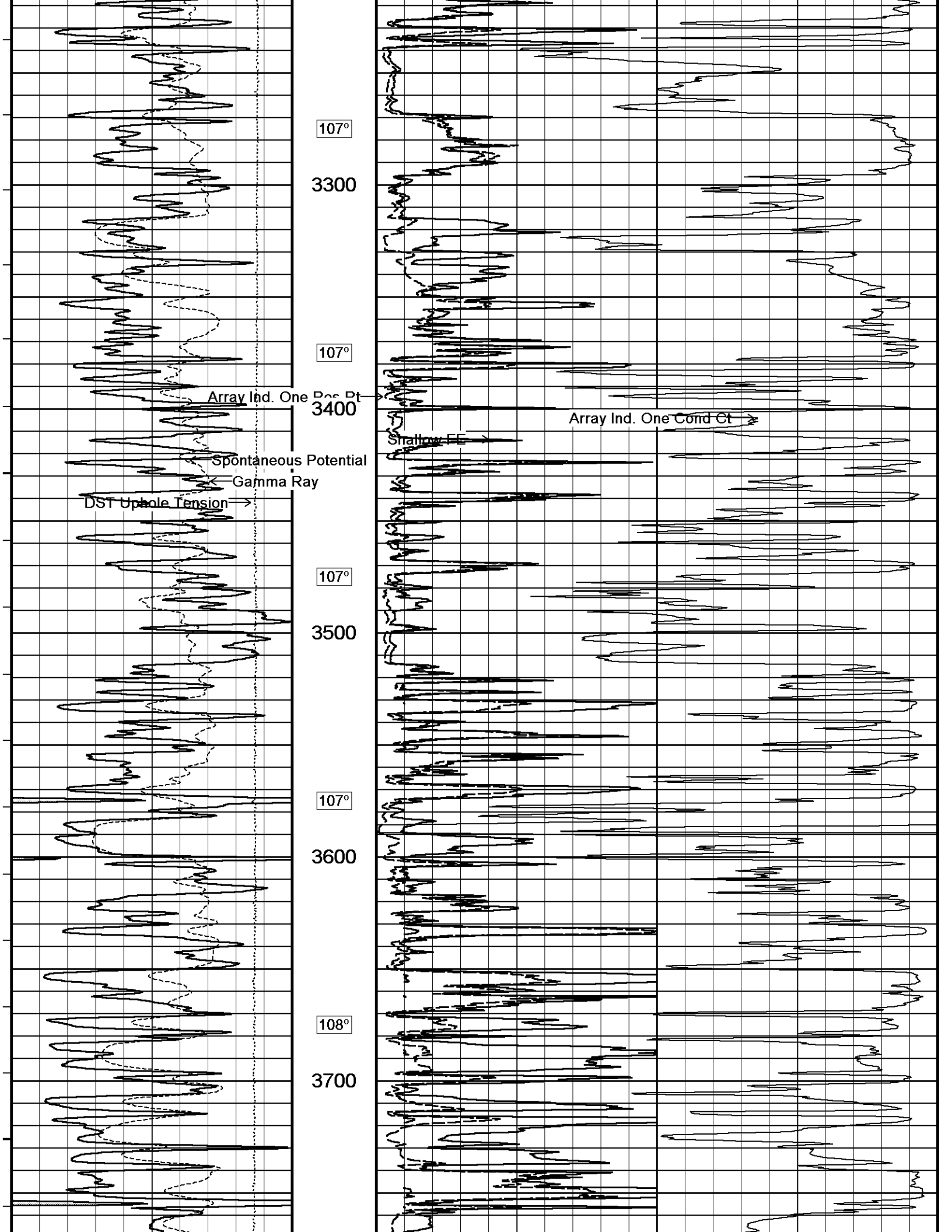
102°

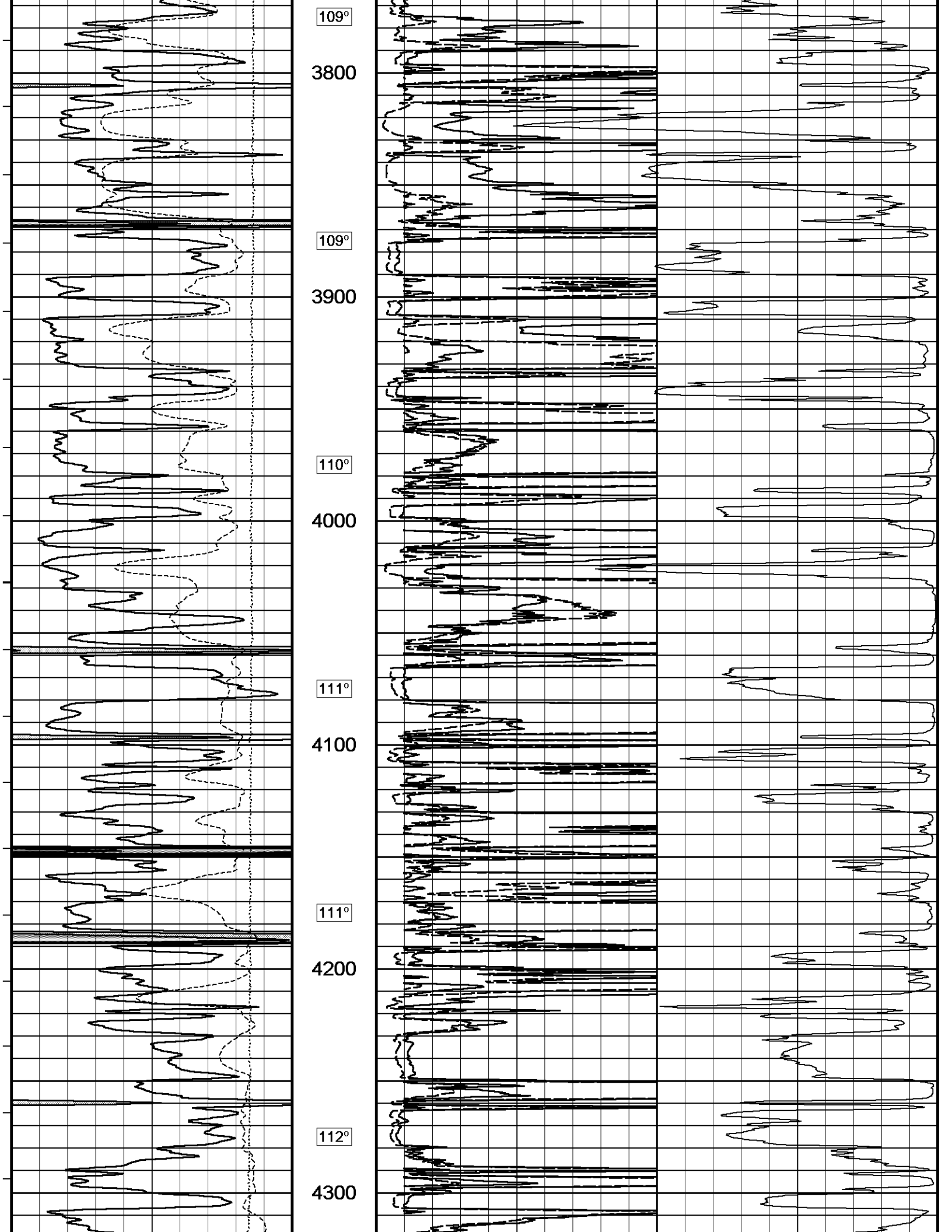
2100

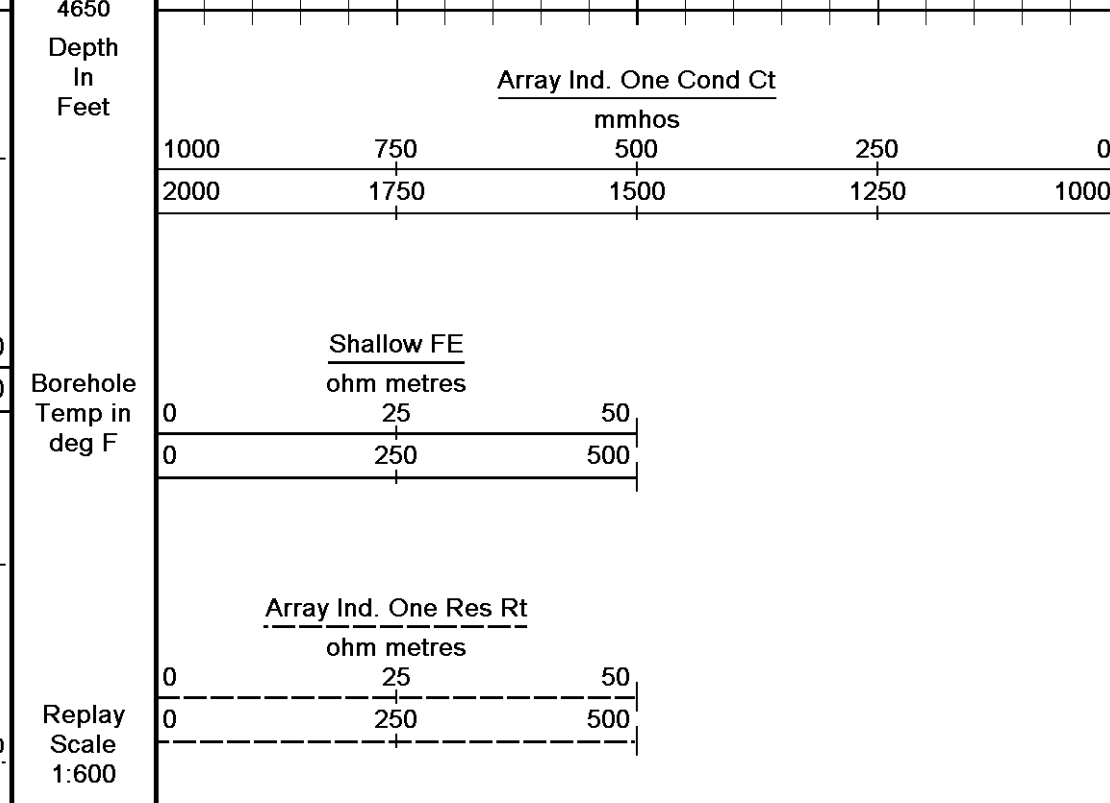
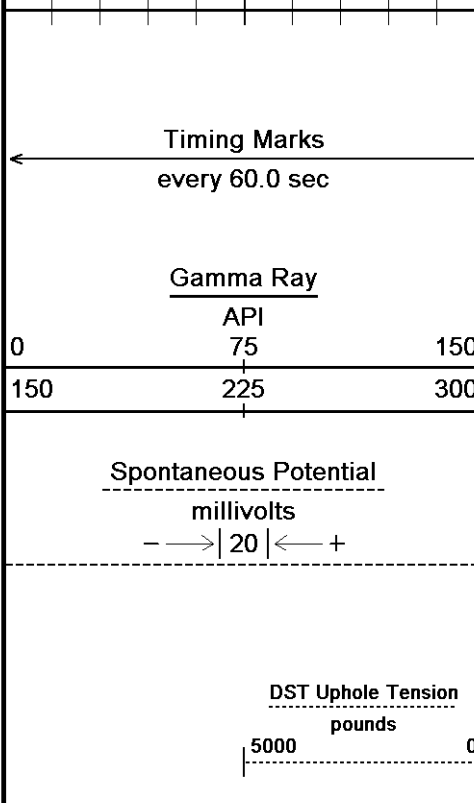
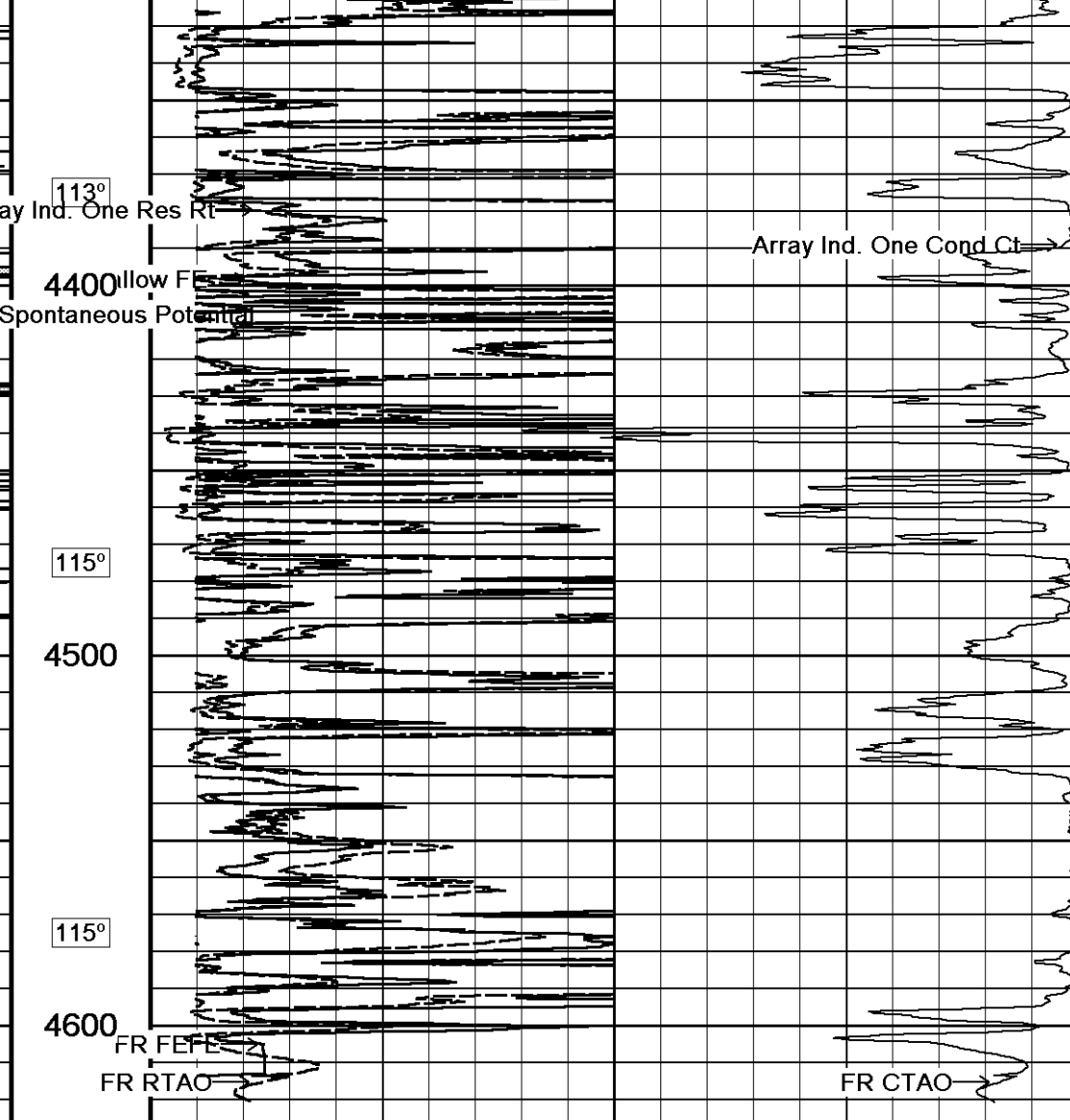
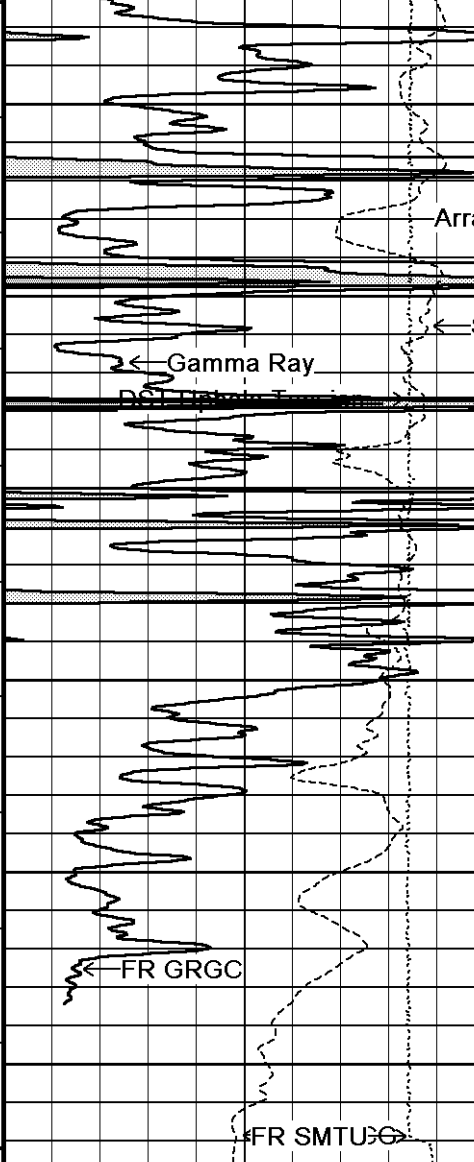








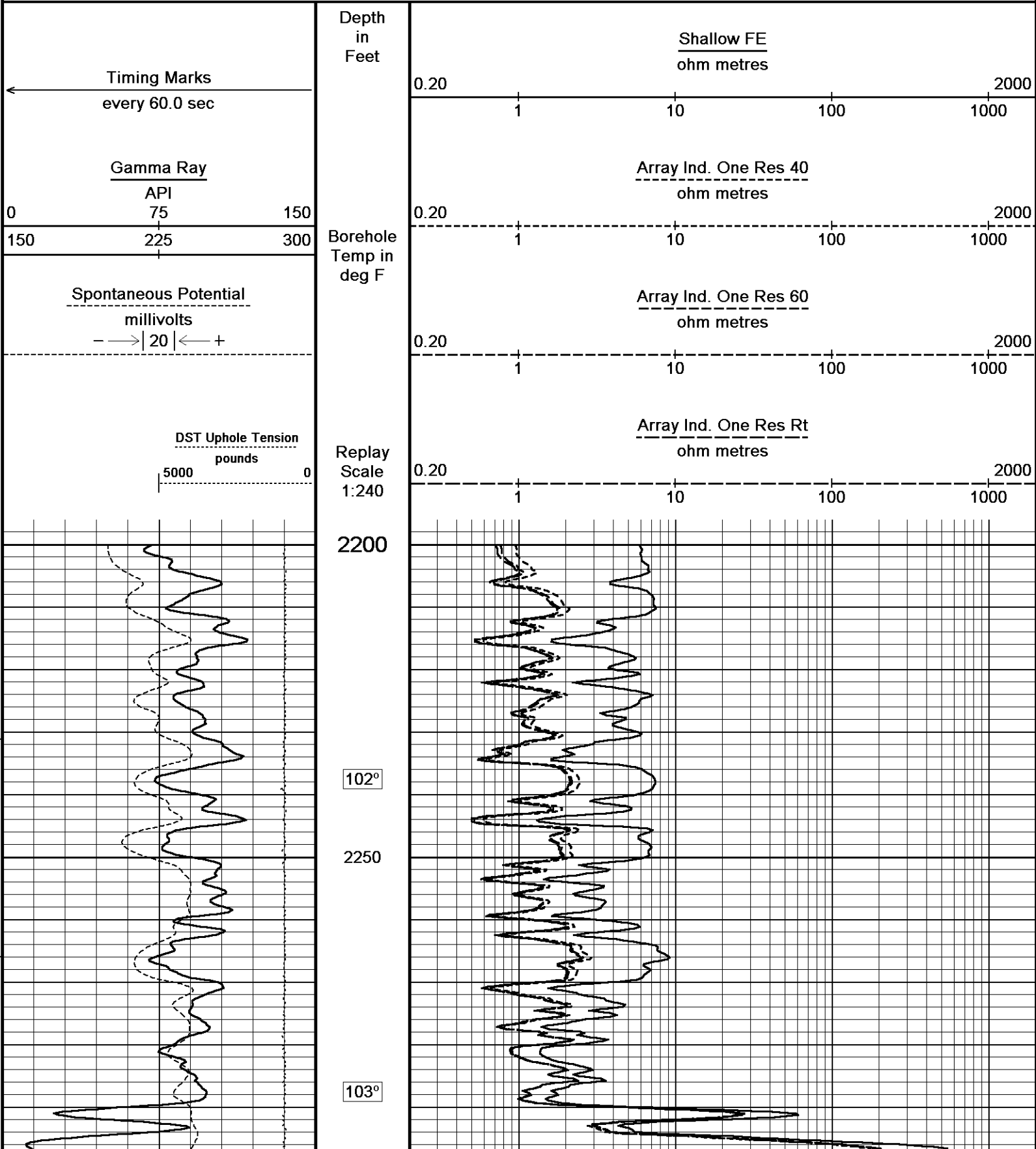


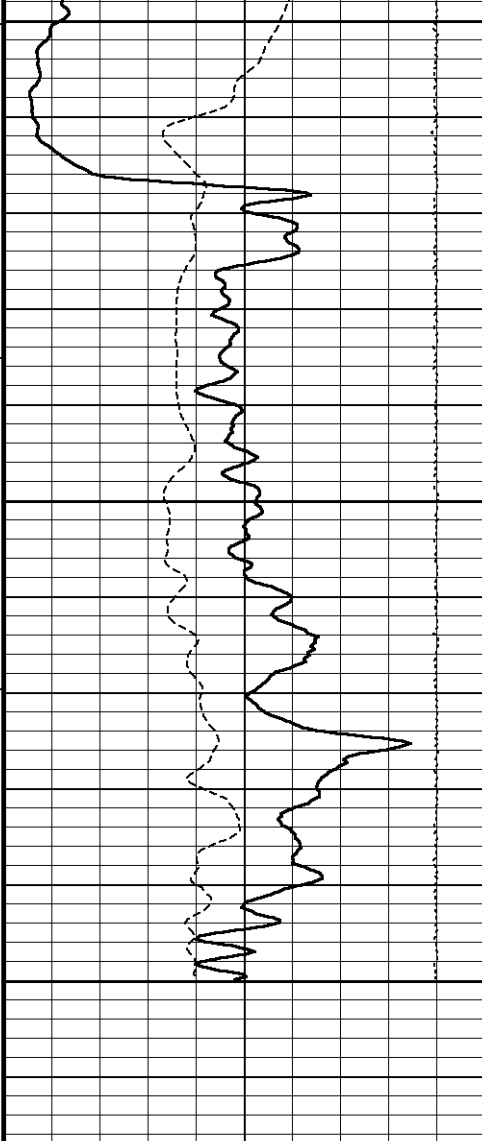


↑ 2 INCH MAIN ↑

↓ 5 INCH MAIN ↓

Depth Based Data - Maximum Sampling Increment 10.0cm
 Plotted on 08-FEB-2013 20:24
 Filename: C:\Minimus 13.04.8492\Data\Shakespeare Holaday #...\Shakespeare Holaday #1-19_002.dta
 Recorded on 08-FEB-2013 18:05
 System Versions: Logged with 13.04.8492 Plotted with 13.04.8492





2300

103°

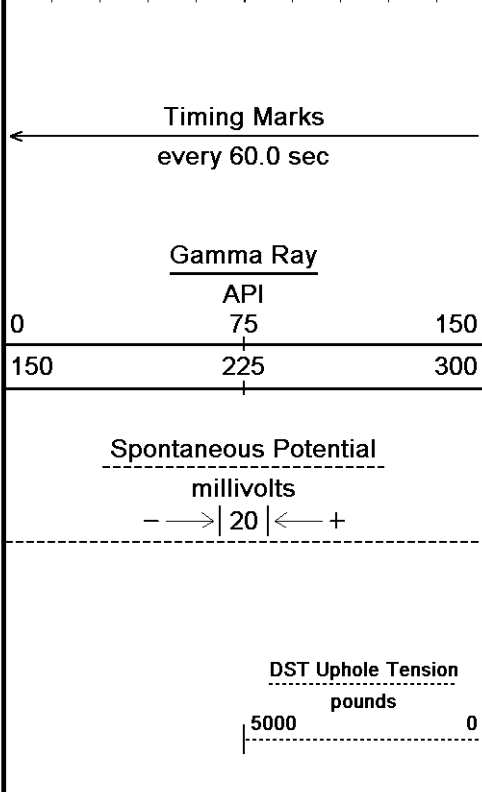
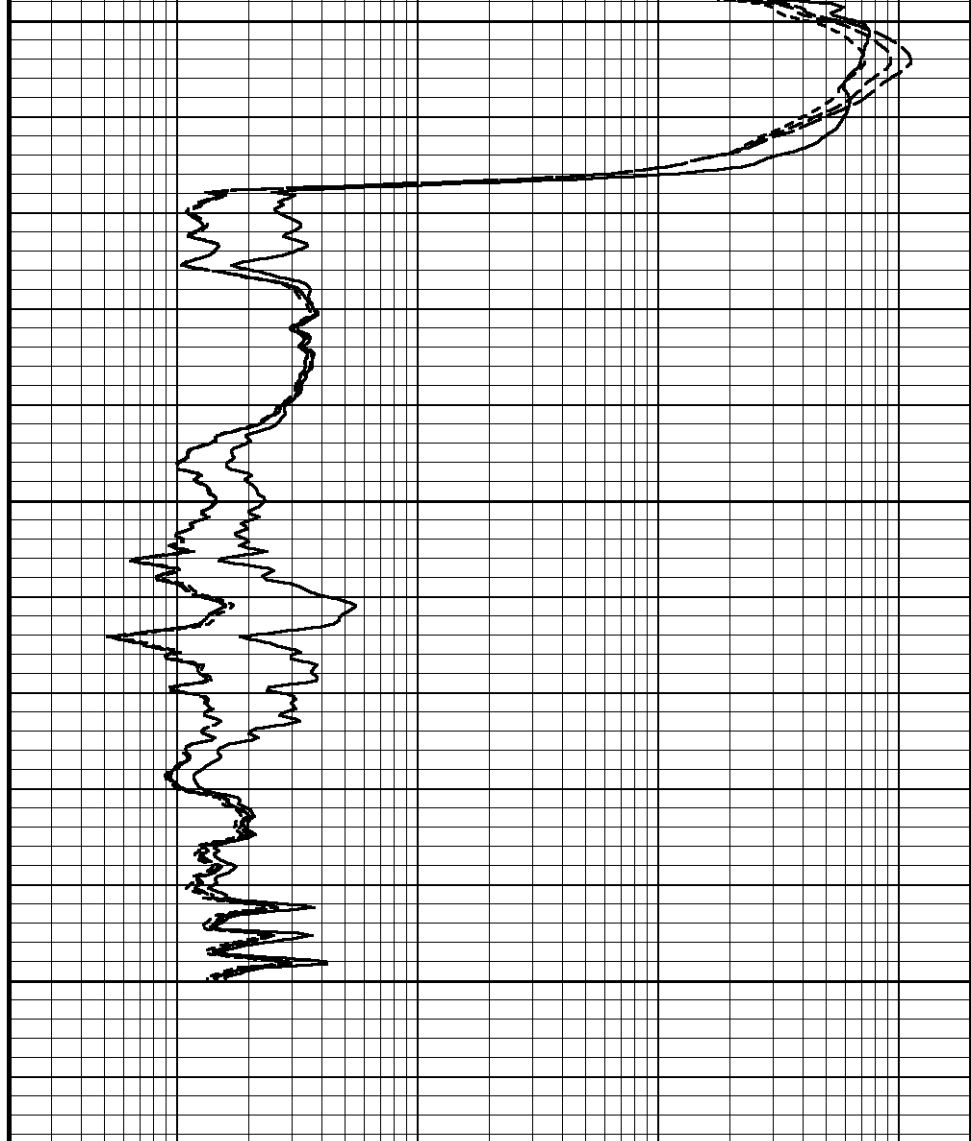
2350

103°

2400

2414

Depth in Feet



Borehole Temp in deg F

Replay Scale 1:240

5 INCH MAIN

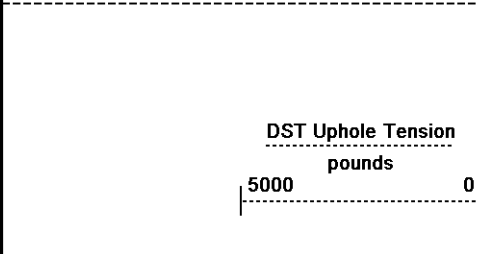
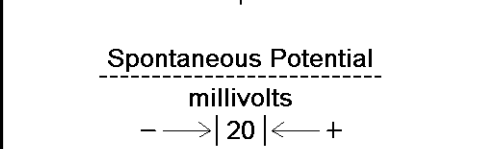
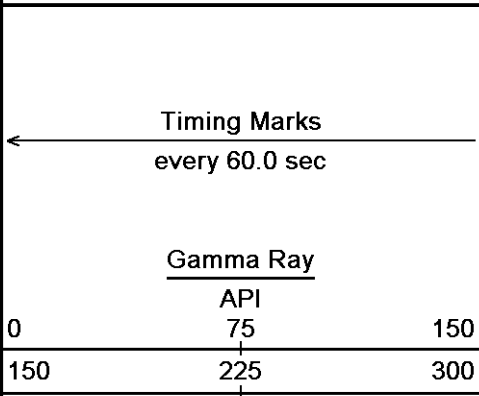
Depth Based Data - Maximum Sampling Increment 10.0cm

Plotted on 08-FEB-2013 20:24

Filename: C:\Minimus 13.04.8492\Data\Shakespeare Holaday #...\Shakespeare Holaday #1-19_002.dta

Recorded on 08-FEB-2013 18:05

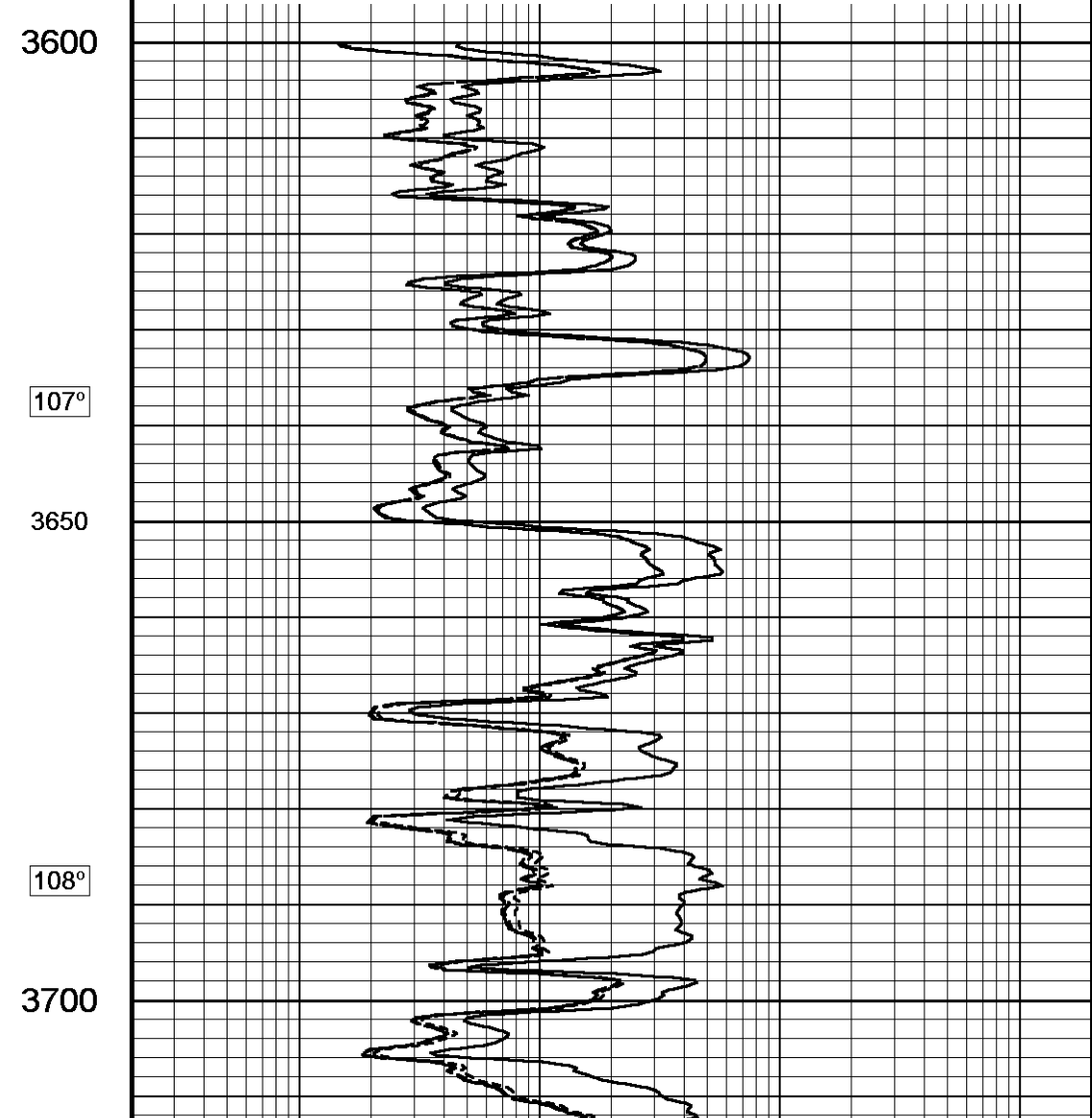
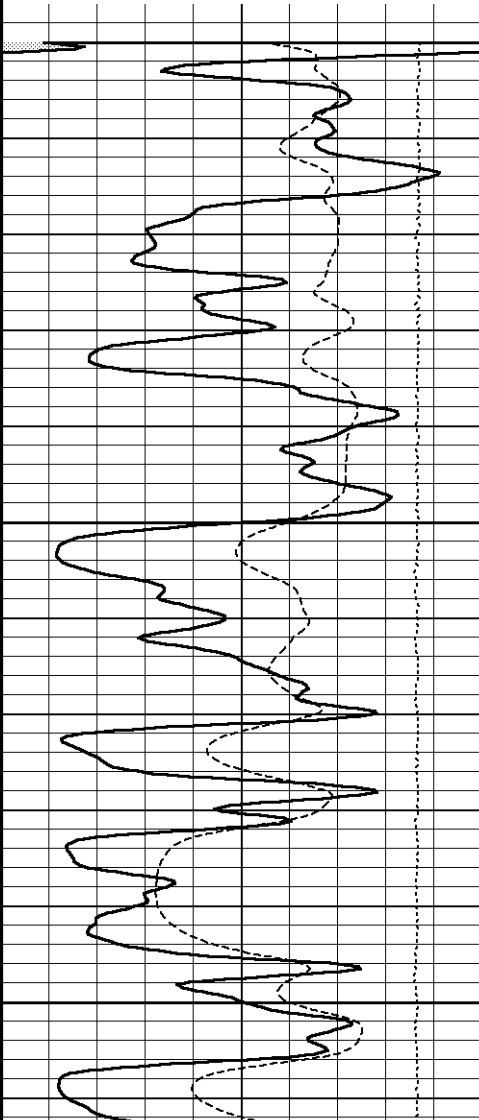
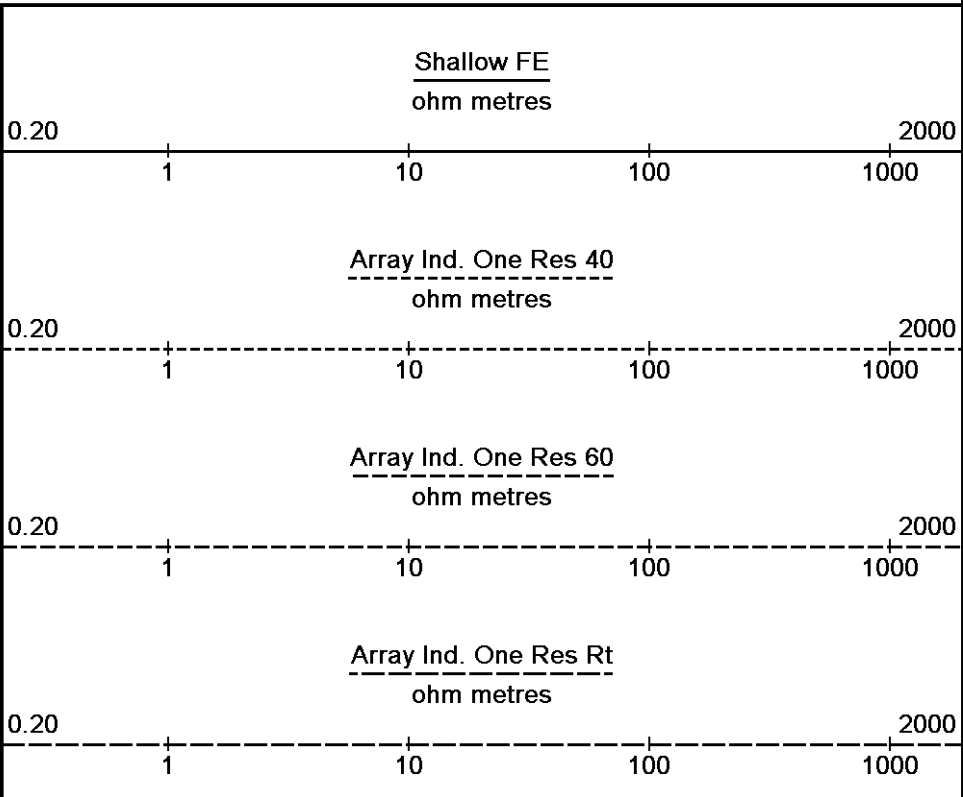
System Versions: Logged with 13.04.8492 Plotted with 13.04.8492



Depth
in
Feet

Borehole
Temp in
deg F

Replay
Scale
1:240

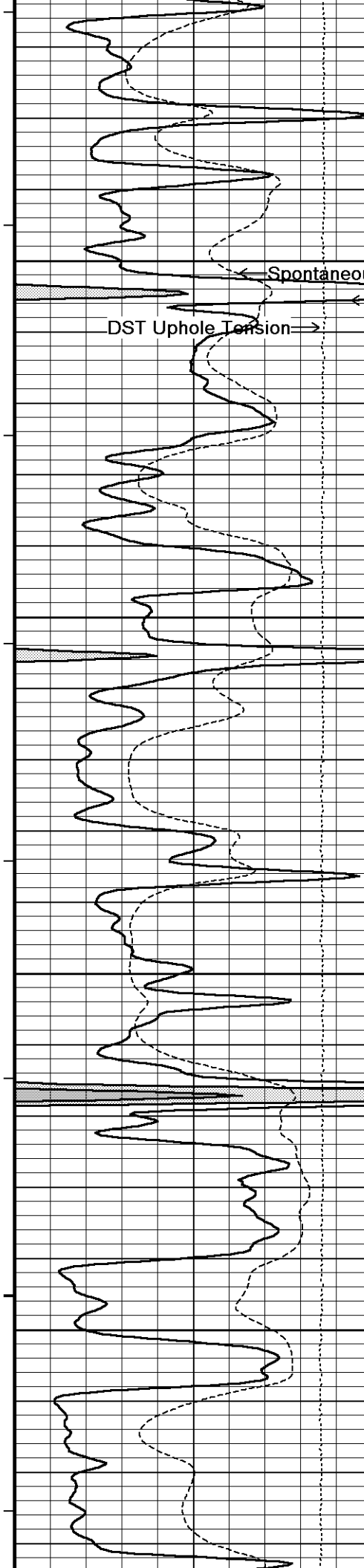


107°

3650

108°

3700



109°

3750

Spontaneous Potential

Gamma Ray

DST Uphole Tension

109°

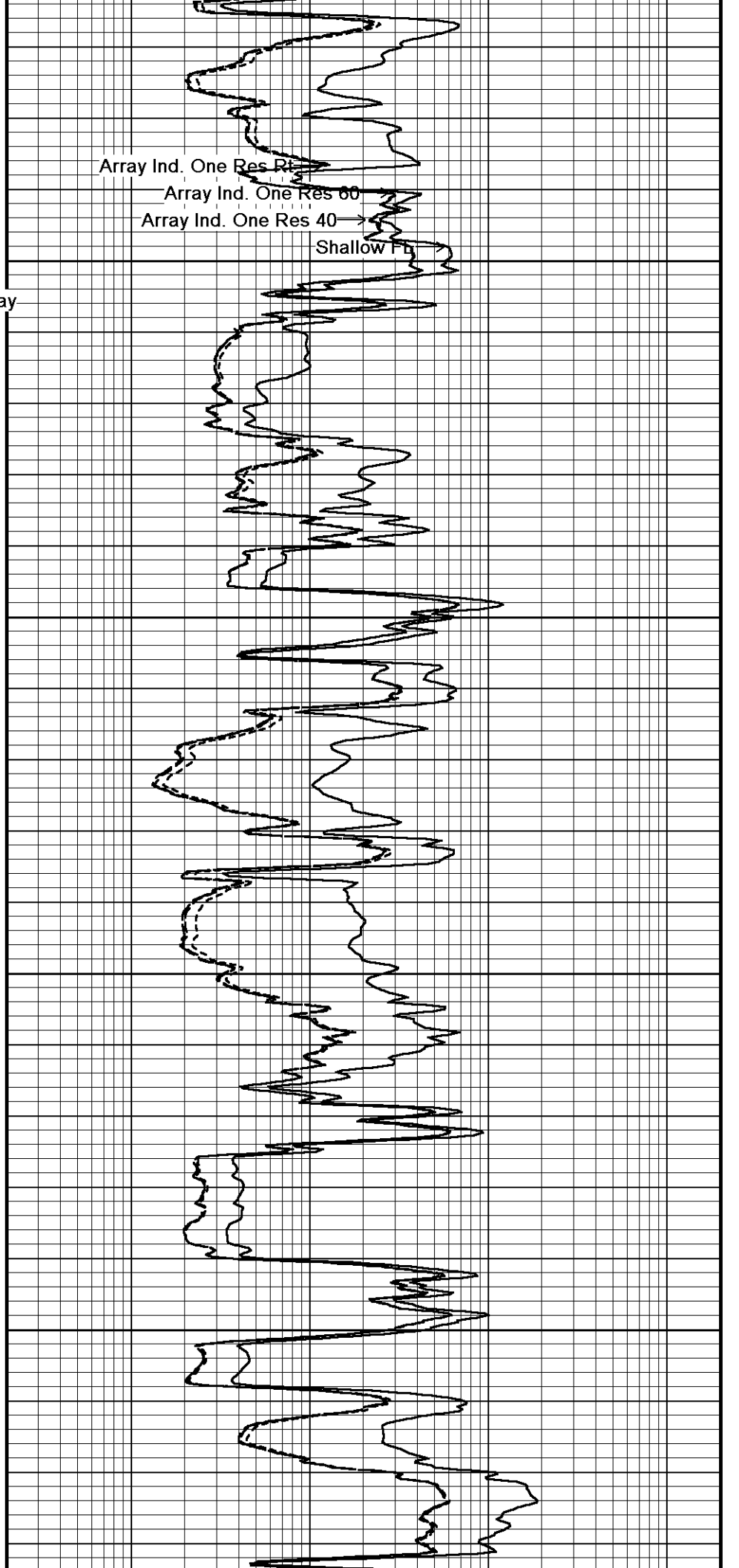
3800

109°

3850

109°

3900

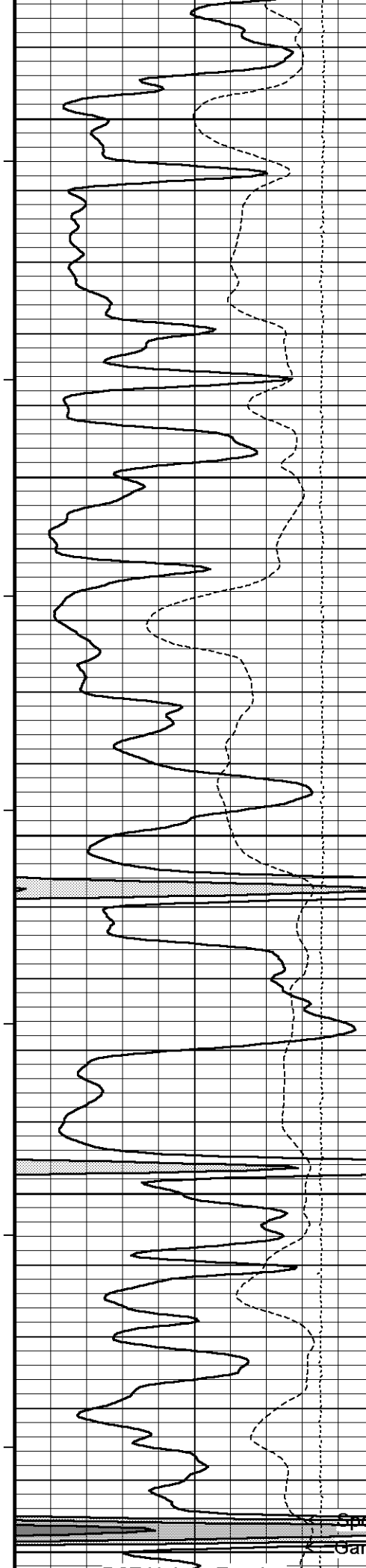


Array Ind. One Res Rt

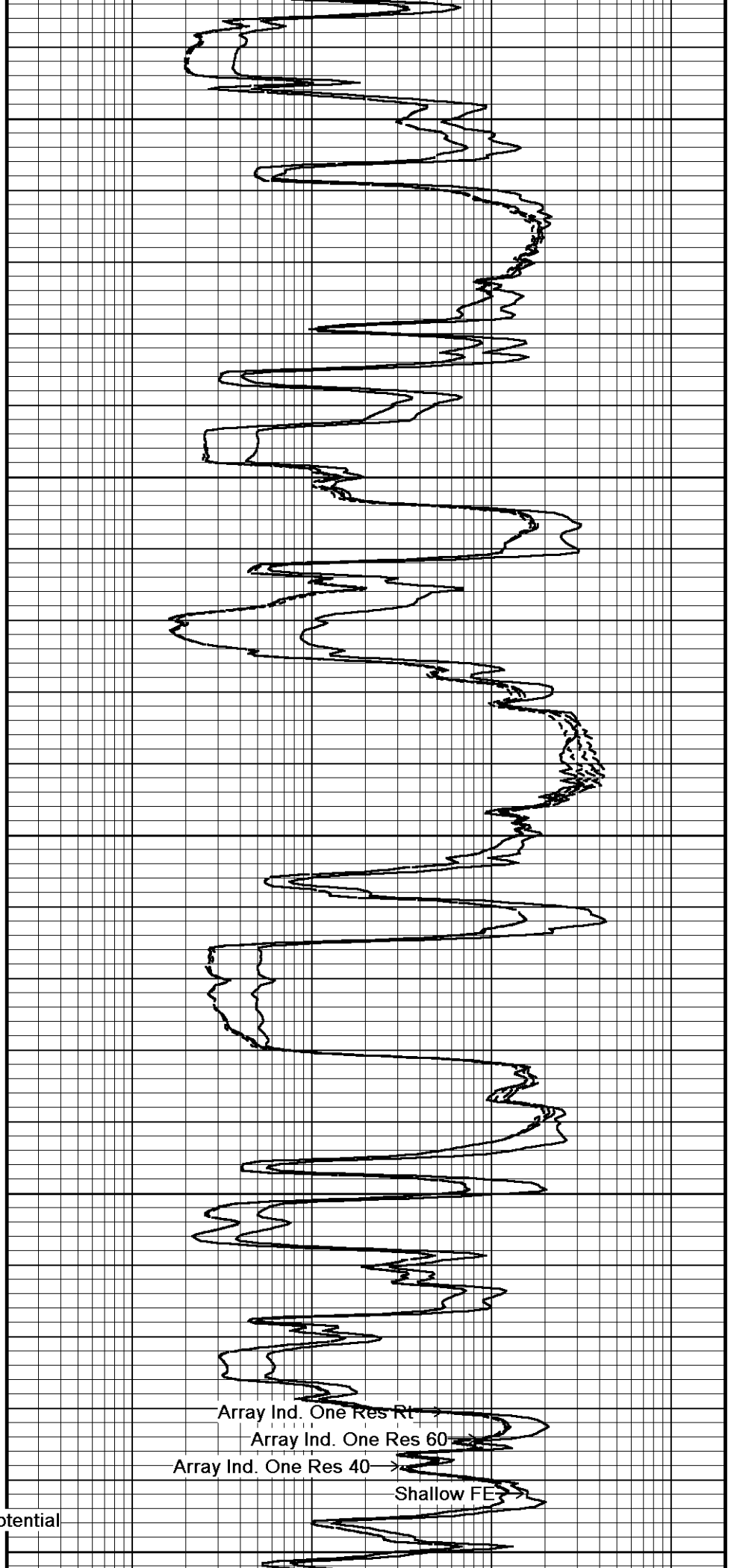
Array Ind. One Res 60

Array Ind. One Res 40

Shallow Fh



110°
3950
110°
4000
111°
4050
111°
4100
111°

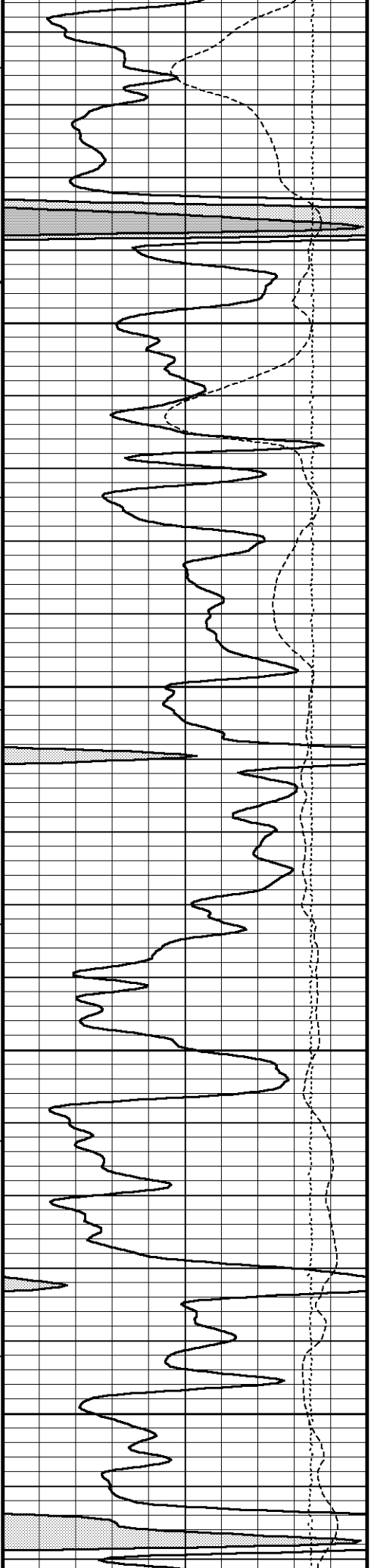


Array Ind. One Res Rt
Array Ind. One Res 60
Array Ind. One Res 40
Shallow FE

Spontaneous Potential
Gamma 4150

DST Uchale Tension

DOF Opole Tension



111°

4200

112°

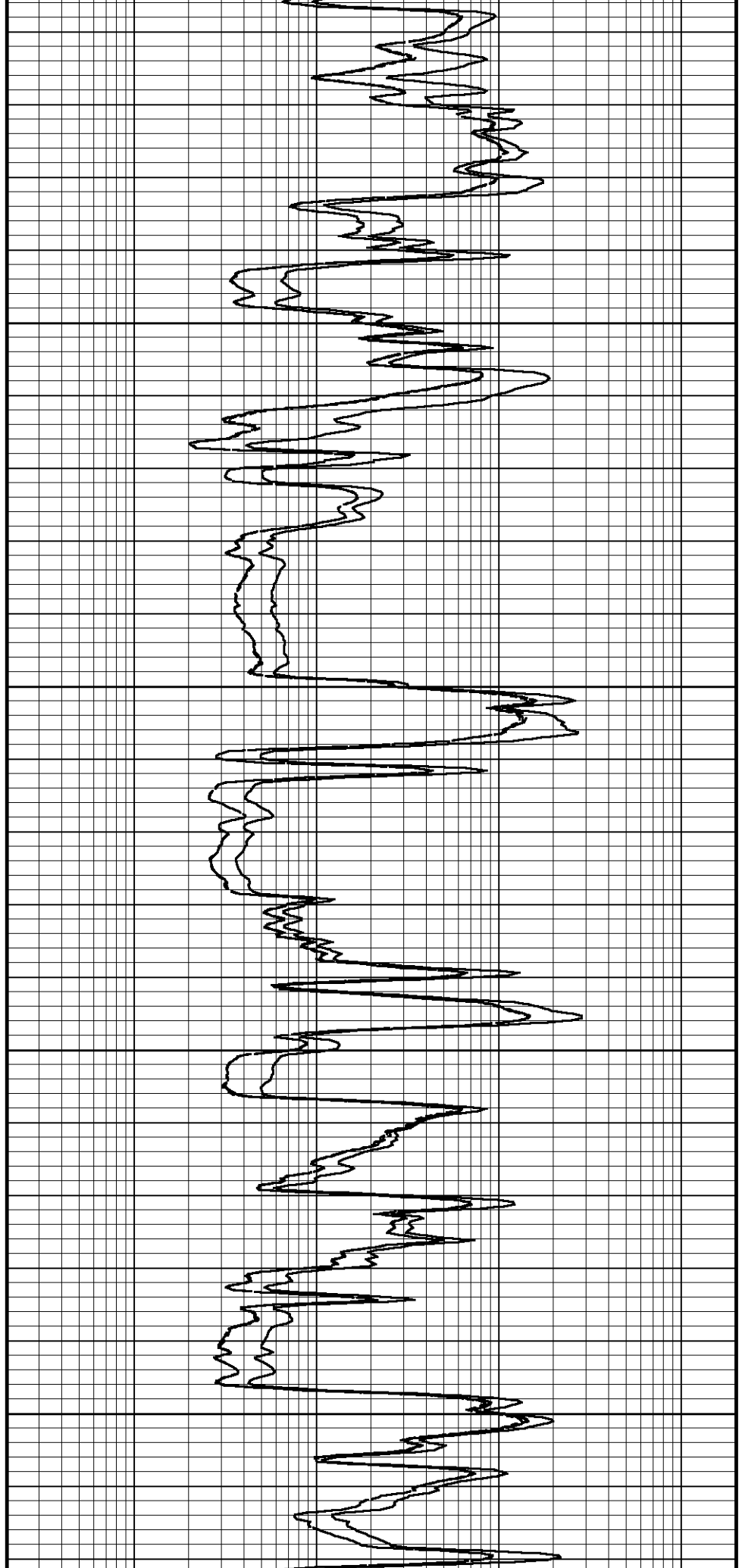
4250

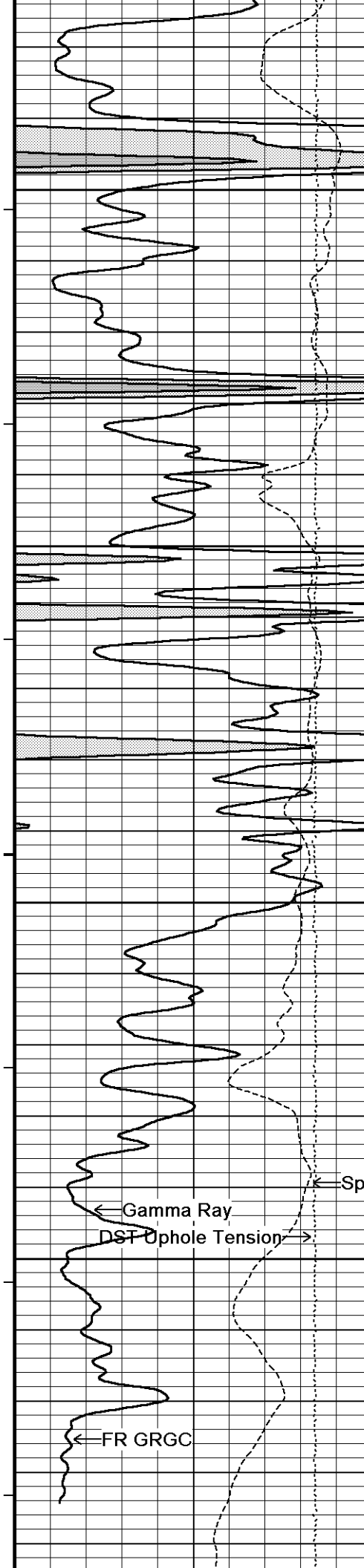
112°

4300

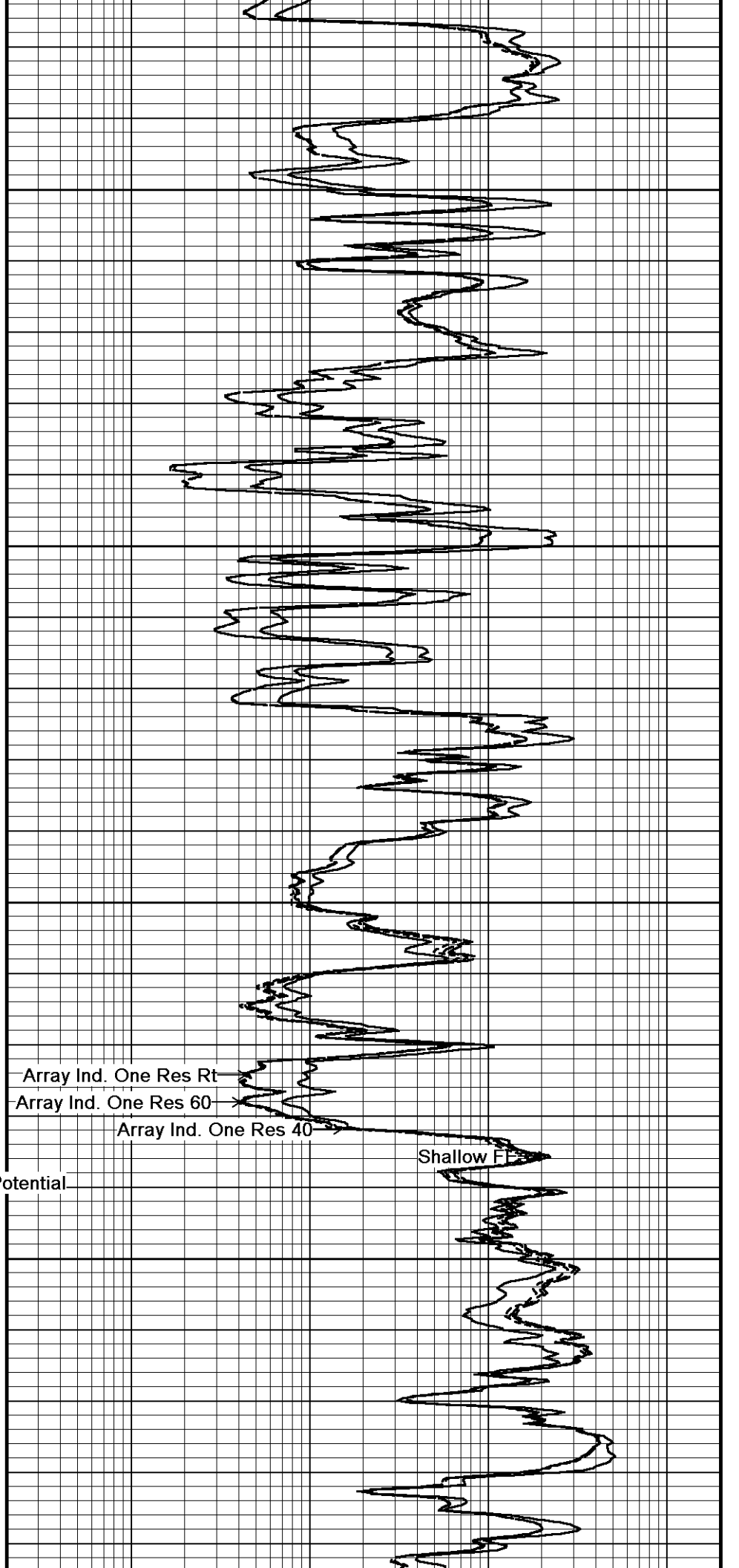
113°

4350





113°
4400
114°
4450
115°
4500
116°
4550

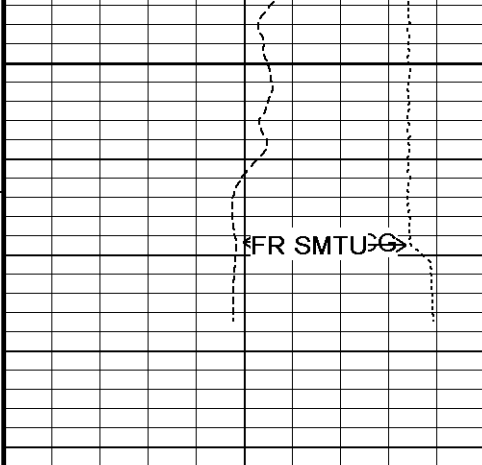


Array Ind. One Res Rt
Array Ind. One Res 60
Array Ind. One Res 40
Shallow FI

Spontaneous Potential

← Gamma Ray
DST Uphole Tension →

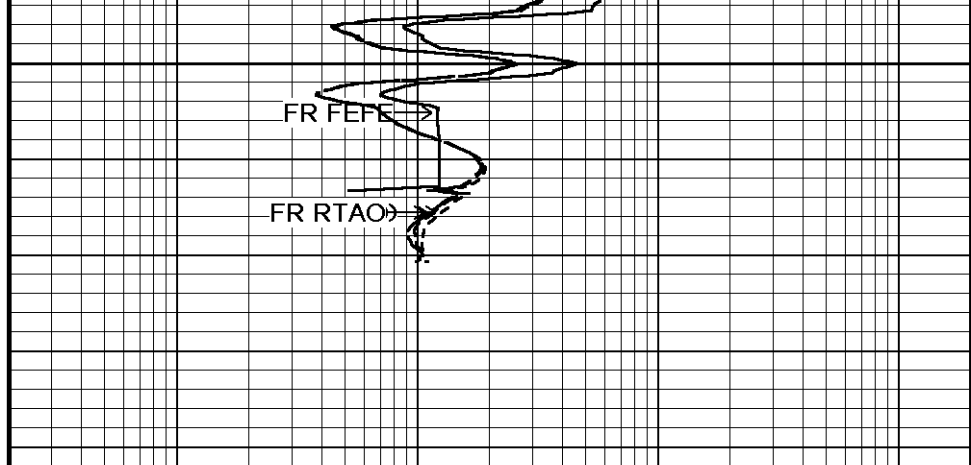
← FR GRGC



4600

4640

Depth in Feet



Timing Marks every 60.0 sec

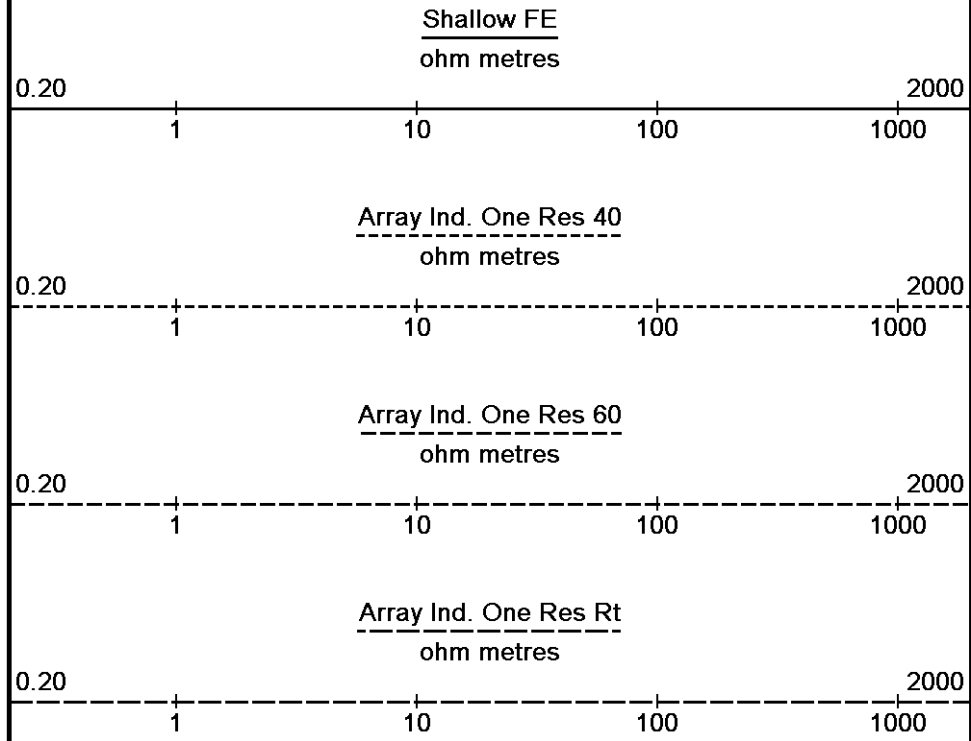
Gamma Ray
API
0 75 150
150 225 300

Spontaneous Potential millivolts
- - -> | 20 | <- - +

DST Uphole Tension pounds
5000 0

Borehole Temp in deg F

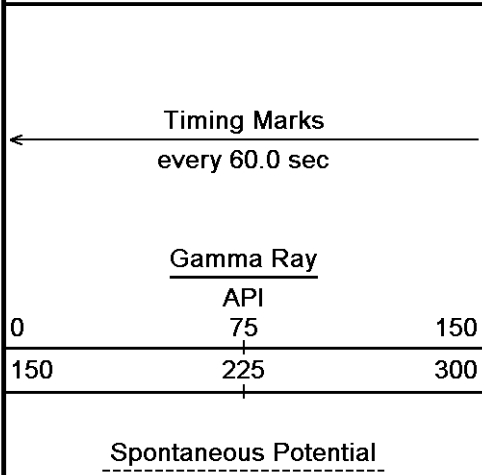
Replay Scale 1:240



Depth Based Data - Maximum Sampling Increment 10.0cm Plotted on 08-FEB-2013 20:24
 Filename: C:\Minimus 13.04.8492\Data\Shakespeare Holaday #...\Shakespeare Holaday #1-19_002.dta Recorded on 08-FEB-2013 18:05
 System Versions: Logged with 13.04.8492 Plotted with 13.04.8492

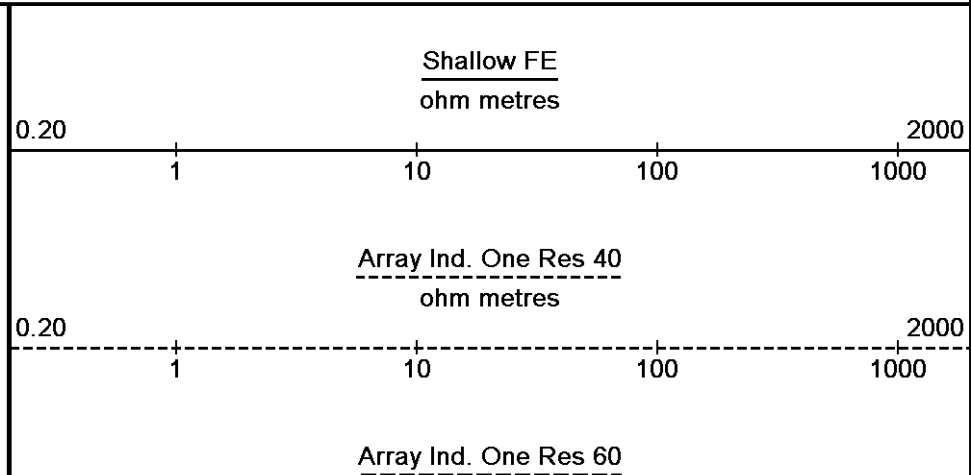
↑ 5 INCH MAIN ↑

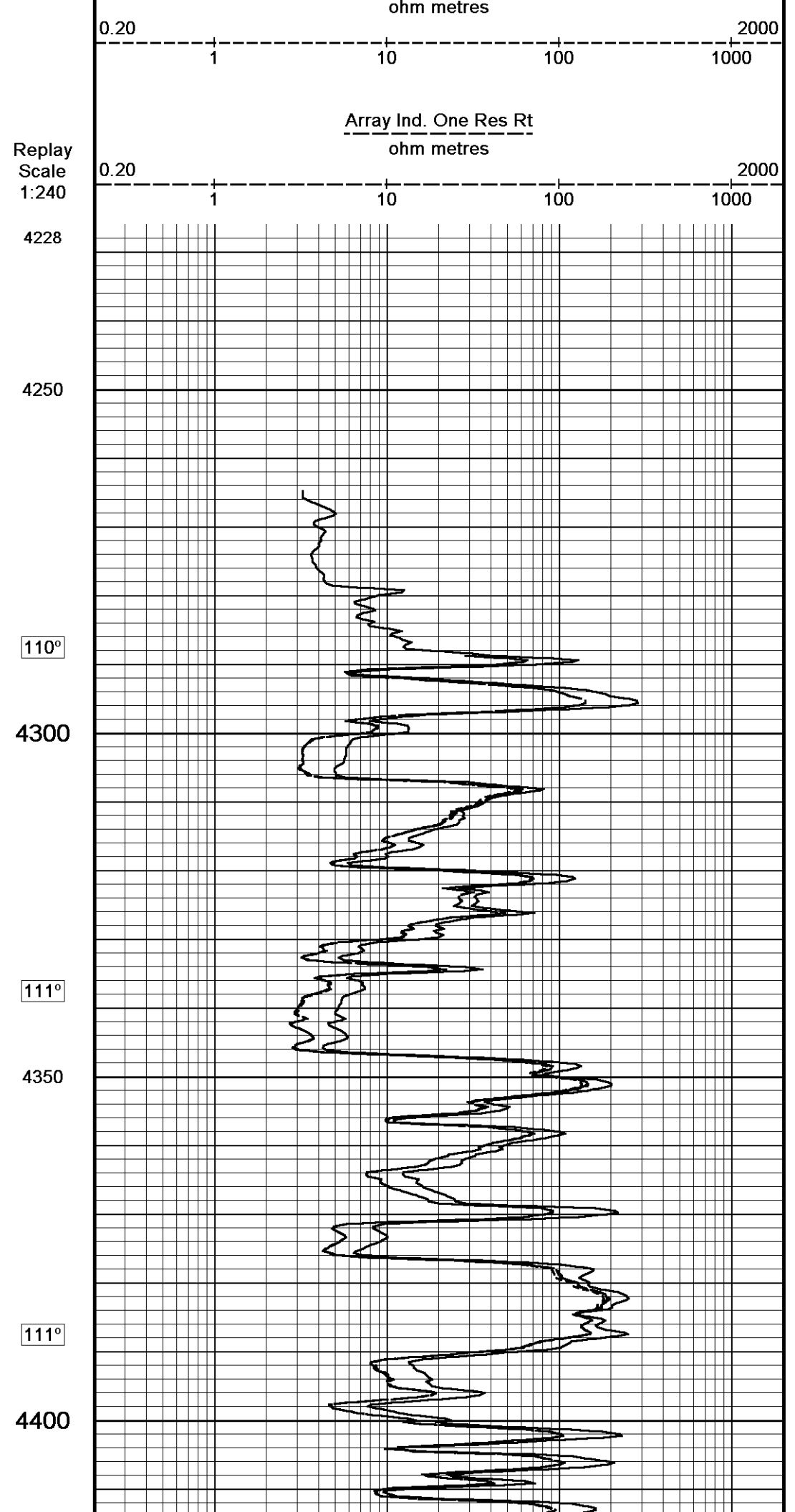
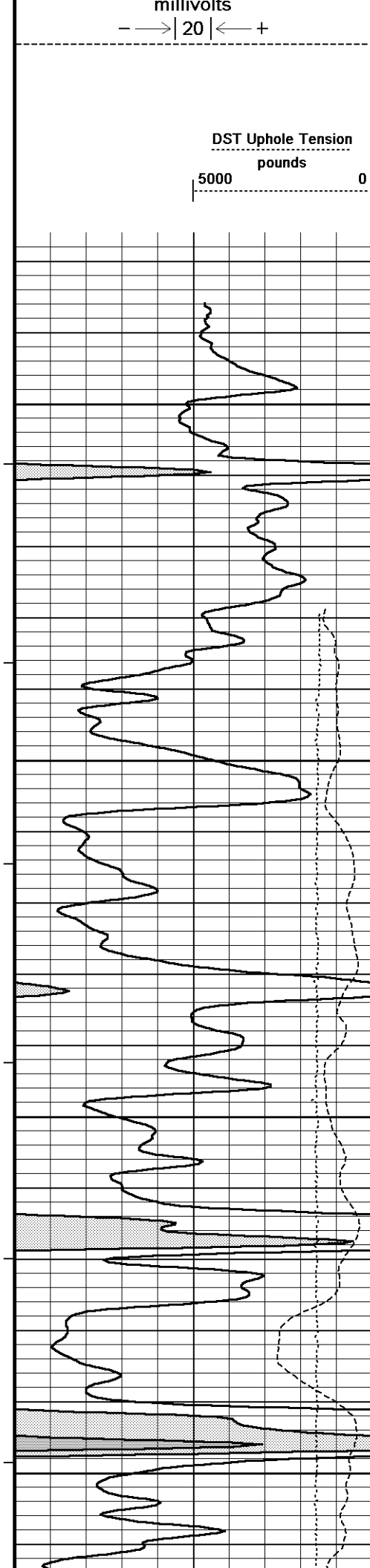
↓ REPEAT SECTION ↓
 Depth Based Data - Maximum Sampling Increment 10.0cm Plotted on 08-FEB-2013 20:24
 Filename: C:\Minimus 13.04.8492\Data\Shakespeare Holaday #...\Shakespeare Holaday #1-19_001.dta Recorded on 08-FEB-2013 17:47
 System Versions: Logged with 13.04.8492 Plotted with 13.04.8492

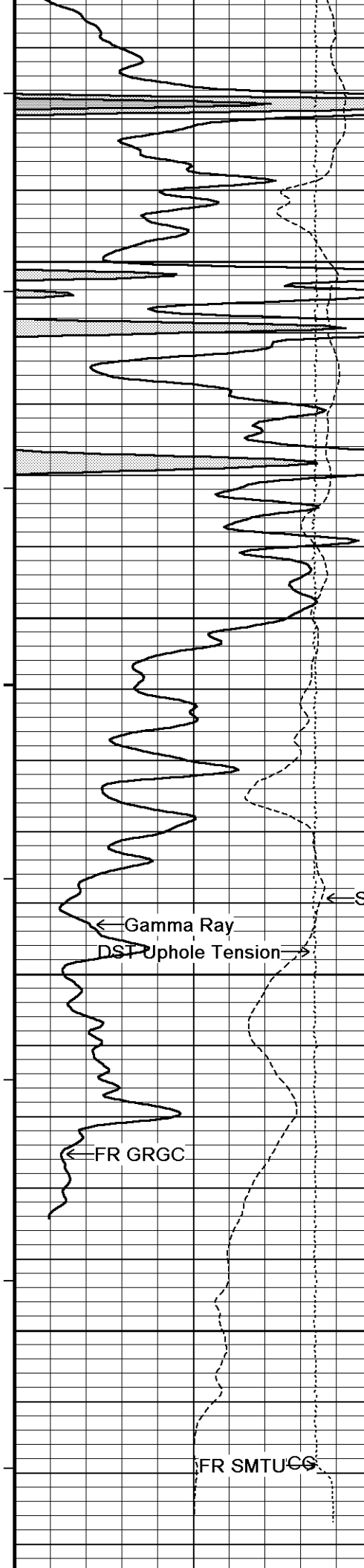


Depth in Feet

Borehole Temp in deg F







111°

4450

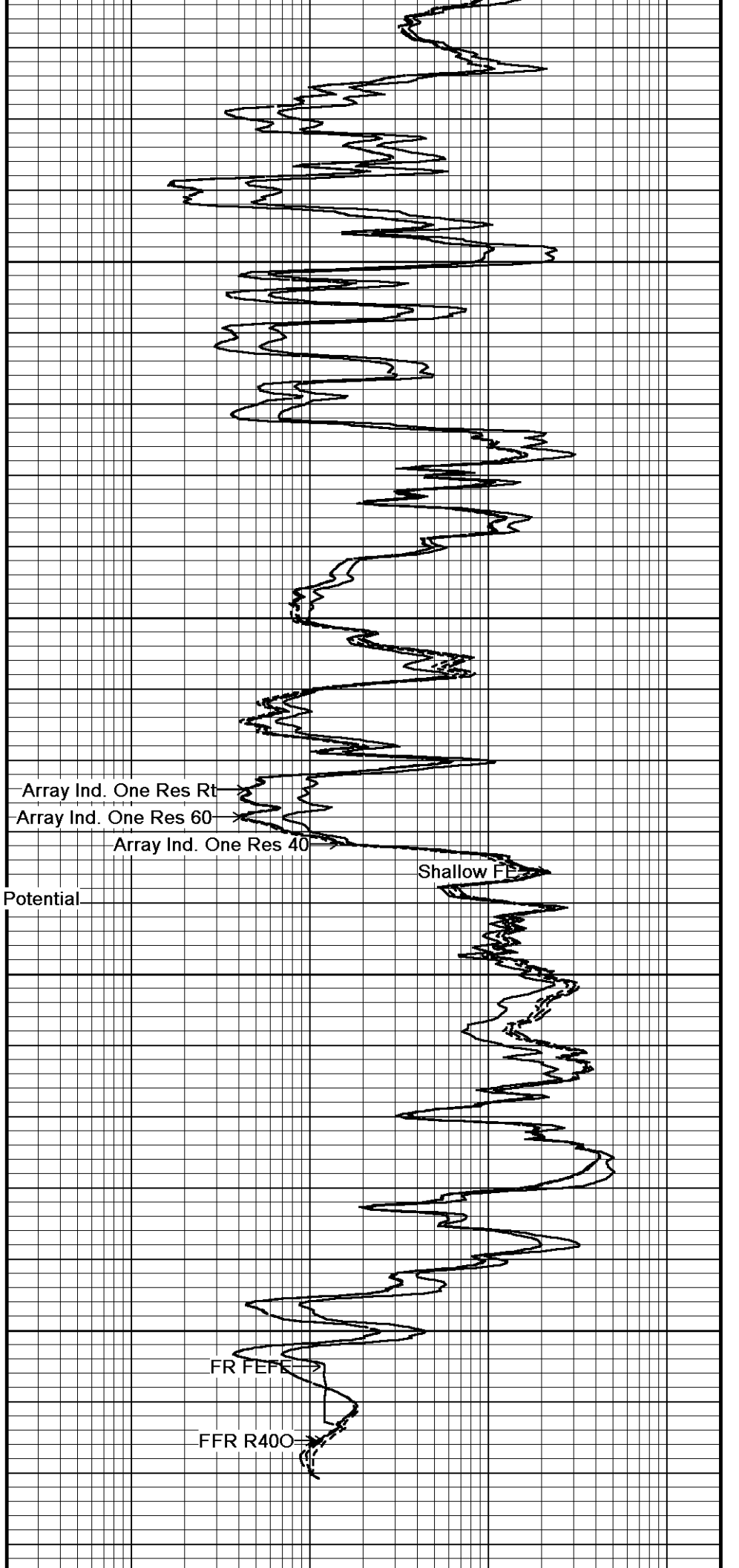
112°

4500

114°

4550

4600



Array Ind. One Res Rt

Array Ind. One Res 60

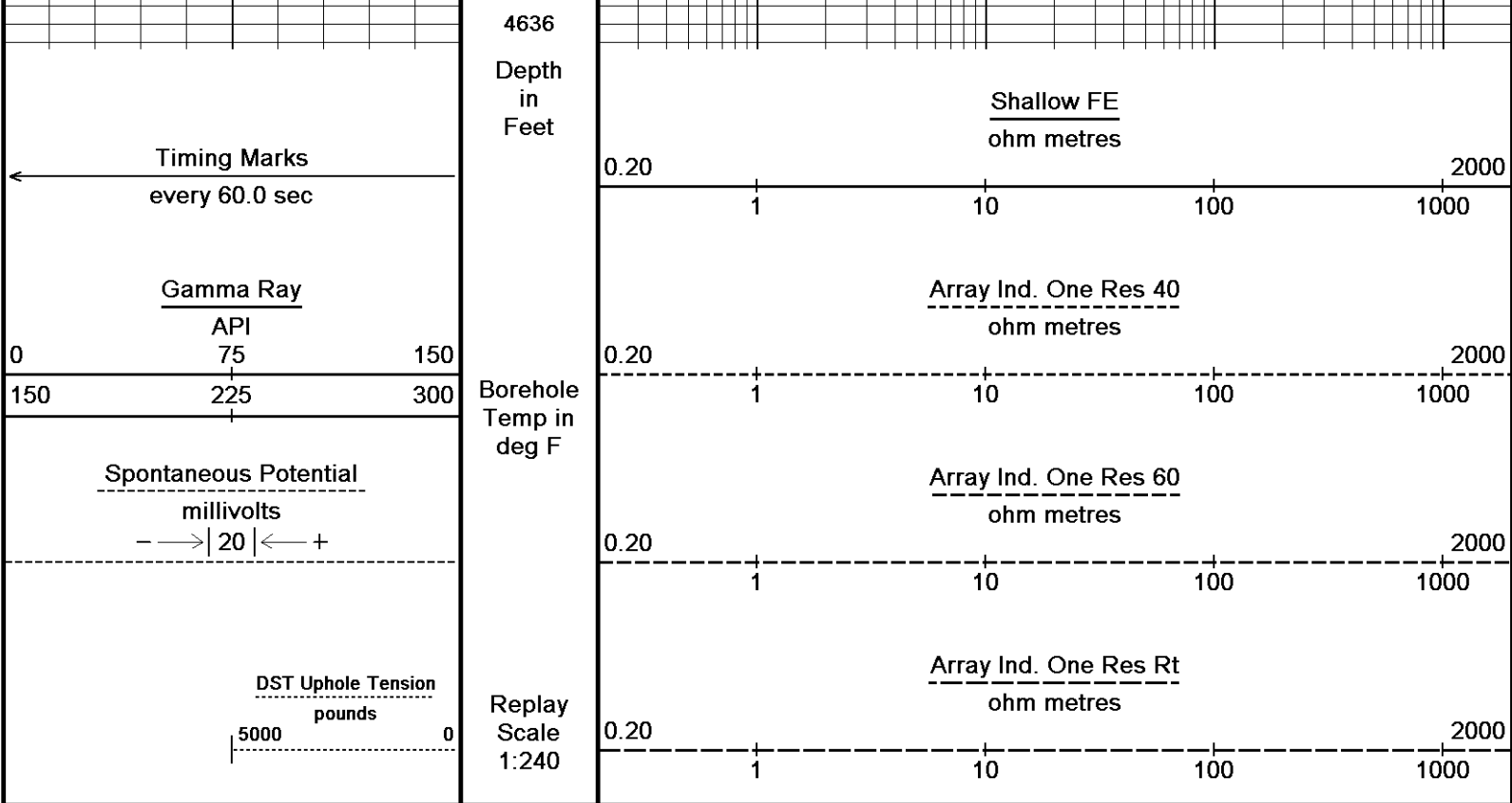
Array Ind. One Res 40

Shallow FF

Spontaneous Potential

FR FEPE

FFR R400



Depth Based Data - Maximum Sampling Increment 10.0cm
 Plotted on 08-FEB-2013 20:24
 Filename: C:\Minimus 13.04.8492\Data\Shakespeare Holaday #1-19\Shakespeare Holaday #1-19_001.dta
 Recorded on 08-FEB-2013 17:47
 System Versions: Logged with 13.04.8492 Plotted with 13.04.8492

↑ REPEAT SECTION ↑

BEFORE SURVEY CALIBRATION

C:\Minimus 13.04.8492\Data\Shakespeare Holaday #1-19\Shakespeare Holaday #1-19_001.dta

General Constants All 000		Last Edited on 08-FEB-2013,15:45
General Parameters		
Mud Resistivity	1.150	ohm-metres
Mud Resistivity Temperature	82.000	degrees F
Water Level	0.000	feet
Borehole Fluid Processing	Wet Hole	
Hole/Annular Volume and Differential Caliper Parameters		
HVOL Method	Single Caliper	
HVOL Caliper 1	Density Caliper	
HVOL Caliper 2	N/A	
Annular Volume Diameter	5.500	inches
Caliper for Differential Caliper	Density Caliper	
Rwa Parameters		
Porosity used	Base Density Porosity	
Resistivity used	Array Ind. Six Res Rt	
RWA Constant A	1.000	
RWA Constant M	2.000	

Down-hole Tension Calibration SMS 0			Field Calibration on 02-FEB-2013 03:49
Reading No	Measured	Calibrated (lbs)	
1	13535.91	0.00	
2	14074.23	471.00	

SP Calibration MCG-C 208			Field Calibration on 27-DEC-2012 10:06
	Measured	Calibrated (mV)	
Reference 1	100.9	100.0	
Reference 2	-100.6	-100.0	

High Resolution Temperature Calibration MCG-C 208

Field Calibration on 05-NOV-2012,14:26

	Measured	Calibrated(Deg F)
Lower	50.00	50.00
Upper	75.00	75.00

High Resolution Temperature Constants MCG-C 208

Last Edited on 05-NOV-2012,14:25

Pre-filter Length 11

Gamma Calibration MCG-C 208

Field Calibration on 05-FEB-2013 10:10

	Measured	Calibrated (API)
Background	69	48
Calibrator (Gross)	1110	773
Calibrator (Net)	1041	725

Gamma Constants MCG-C 208

Last Edited on 08-FEB-2013,15:45

Gamma Calibrator Number	GR38	
Mud Density	1.10	gm/cc
Caliper Source for Processing	Density Caliper	
Tool Position	Eccentred	
Concentration of KCl	0.00	kppm

Micro Laterolog Calibration MMR-A 11

Base Calibration on 31-DEC-1999 00:00

Field Check on 31-DEC-1999 00:00

Base Calibration

	Measured		Calibrated (ohm-m)	
	Ref 1	Ref 2	Ref 1	Ref 2
	0.0	0.0	0.0	0.0
Base Check (ohm-m)	0.0		Field Check (ohm-m)	
	0.0		0.0	

Micro Laterolog Constants MMR-A 11

Last Edited on 12-NOV-2012,01:59

Pad Type	6 in Solid Nylon B23059	
Micro Laterolog K Factor	0.0128	
Standoff Offset	0.0000	inches

Mudcake Thickness Correction Constants

Mud Cake Source	Constant Value	
Mud Cake Thickness	0.4000	inches
Mud Cake Thickness Caliper	N/A	
Mud Cake Resistivity	0.1500	ohm-m
Mud Cake Resistivity Temp.	68.00	Deg F
Mud Cake Resistivity Source	Constant Value	
Temp. Source Rmc Correc.	N/A	

Caliper Calibration MMR-A 11

Base Calibration on 16-JAN-2013 10:32

Field Calibration on 05-FEB-2013 09:58

Base Calibration

Reading No	Measured	Calibrator Size (in)
1	13881	5.98
2	17138	7.97
3	20398	9.86
4	24351	11.92
5	0	0.00
6	N/A	N/A

Field Calibration

Measured Caliper (in)	Actual Caliper (in)
6.09	5.98

Micro Normal and Micro Inverse Calibration MMR-A 11

Base Calibration on 16-JAN-2013 10:36

Field Check on 05-FEB-2013 09:54

Base Calibration

Channel	Measured		Calibrated (ohm-m)	
	Resistor 1	Resistor 2	Resistor 1	Resistor 2
Micro Normal	12.3	59.9	5.0	25.0
Micro Inverse	15.5	77.5	5.0	25.0

Channel	Base Check (ohm-m)	Field Check (ohm-m)
Micro Normal	76.3	76.3
Micro Inverse	58.7	58.7

Micro Normal and Micro Inverse Constants MMR-A 11

Last Edited on 05-NOV-2012,13:54

Pad Type 8-12 in Soft Rubber Inflatable 006-9011-159
 Micro Normal K Factor 1.0000
 Micro Inverse K Factor 1.0000
 Standoff Offset 0.0000 inches

Neutron Calibration MDN-A.B 65

Base Calibration on 24-JAN-2013 15:09
 Field Check on 05-FEB-2013 10:14

Base Calibration

	Measured		Calibrated (cps)	
	Near	Far	Near	Far
	2952	92	3714	110
Ratio	32.138		33.764	

Field Calibrator at Base

	Calibrated (cps)	
	1720	2499
Ratio	0.688	

Field Check

	Calibrated (cps)	
	1721	2500
Ratio	0.696	

Neutron Constants MDN-A.B 65

Last Edited on 08-FEB-2013,15:46

Neutron Source Id PN-521
 Neutron Jig Number 5824NE
 Epithermal Neutron No
 Caliper Source for Processing Density Caliper
 Stand-off 0.00 inches
 Mud Density 1.00 gm/cc
 Limestone Sigma 7.10 cu
 Sandstone Sigma 4.26 cu
 Dolomite Sigma 4.70 cu
 Formation Pressure Source None
 Formation Pressure N/A kpsi
 Temperature Source None
 Temperature N/A degrees F
 Mud Salinity 0.00 kppm
 Salinity Correction Not Applied
 Formation Fluid Salinity Source None
 Formation Fluid Salinity N/A kppm
 Barite Mud Correction Not Applied

FE Calibration MFE-B.J 352

Base Calibration on 16-JAN-2013 10:20
 Field Check on 05-FEB-2013 09:44

Base Calibration

	Measured	Calibrated (ohm-m)
Reference 1	0.0	0.0
Reference 2	964.3	126.8
Base Check		281.2
Field Check		281.4

FE Constants MFE-B.J 352

Last Edited on 08-FEB-2013,15:46

Running Mode No Sleeve
 MFE K Factor 0.1268
 Caliper Source for FE correction Density Caliper
 Caliper Value for FE correction N/A inches
 Rm Source for FE correction Temperature Corr
 Temp. for Rm Corr. MCG External Temperature
 Stand-off 0.5 inches

High Resolution Temperature Calibration MAI-A.A 45

Field Calibration on 13-DEC-2012,10:54

	Measured	Calibrated(Deg F)
Lower	50.00	50.00

High Resolution Temperature Constants MAI-A.A 45

Last Edited on 13-DEC-2012,10:53

Pre-filter Length

11

Induction Calibration MAI-A.A 45

Base Calibration on 26-JUL-2012,09:22

Field Check on 05-FEB-2013 09:43

Base Calibration

Test Loop Calibration

Channel	Measured		Calibrated (mmho/m)	
	Low	High	Low	High
1	14.4	472.6	9.3	966.2
2	5.7	374.0	7.6	821.4
3	3.4	261.2	5.2	566.0
4	2.5	133.9	2.6	279.2

Array Temperature 78.4 Deg F

Channel	Base Check (mmho/m)		Field Check (mmho/m)	
	Low	High	Low	High
1			18.6	3851.7
2			31.8	3629.3
3			28.7	3049.2
4			18.4	2079.1
Deep			16.1	1911.0
Medium			42.6	4060.2
Shallow			49.7	5483.2

Array Temperature 60.2 Deg F

Induction Constants MAI-A.A 45

Last Edited on 08-FEB-2013,15:46

Induction Model	RtAP-WBM		
Caliper for Borehole Corr.	Density Caliper		
Hole Size for Borehole Correction	N/A	inches	
Tool Centred	No		
Stand-off Type	Fins		
Stand-off	0.50	inches	
Number of Fins on Stand-off	8.0000		
Stand-off Fin Angle	45.00	degrees	
Stand-off Fin Width	0.5000	inches	
Borehole Corr. Rm Source	Temperature Corr		
Temp. for Rm Corr.	MCG External Temperature		
Squasher Start	0.0020	mhos/metre	
Squasher Offset	N/A	mhos/metre	
Borehole Normalisation			
DRM1	0.0000	DRC1	0.0000
DRM2	0.0000	DRC2	0.0000
MRM1	0.0000	MRC1	0.0000
MRM2	0.0000	MRC2	0.0000
SRM1	0.0000	SRC1	0.0000
SRM2	0.0000	SRC2	0.0000

Calibration Site Corrections

Channel 1	0.00	mmhos/metre
Channel 2	0.00	mmhos/metre
Channel 3	0.00	mmhos/metre
Channel 4	0.00	mmhos/metre

Apparent Porosity and Water Saturation Constants

Archie Constant (A)	1.00	
Cementation Exponent (M)	2.00	
Saturation Exponent (N)	2.00	
Saturation of Water for Apor	100.00	percent
Resistivity of Water for Apor and Sw	0.05	ohm-m
Resistivity of Mud Filtrate for Sw	0.00	ohm-m
Source for Rt	0.00	
Source for Rxo	0.00	

Photo Density Calibration MPD-B 31

Base Calibration on 24-JAN-2013 09:49

Field Check on 05-FEB-2013 09:50

Density Calibration		Measured		Calibrated (sdu)	
Base Calibration		Near	Far	Near	Far
Reference 1		45759	23102	59556	30836
Reference 2		18982	1934	24941	2541
Field Check at Base		680.7	842.1		
Field Check		682.0	839.6		

PE Calibration		Measured		Calibrated	
Base Calibration		WS	WH	Ratio	Ratio
Background		127	606		
Reference 1		19469	45650	0.429	0.371
Reference 2		5712	18903	0.305	0.272
Field Check at Base		126.6	606.1		
Field Check		124.3	605.7		

Density Constants MPD-B 31

Last Edited on 08-FEB-2013,15:46

Density Source Id	254	
Nylon Calibrator Number	DNCE695	
Aluminium Calibrator Number	DACD698	
Density Shoe Profile	8 inch	
Caliper Source for Processing	Density Caliper	
PE Correction to Density	Not Applied	
Mud Density	1.10	gm/cc
Mud Density Z/A Multiplier	1.11	
Mud Filtrate Density	1.00	gm/cc
Dry Hole Mud Filtrate Density	1.00	gm/cc
DNCT	0.00	gm/cc
CRCT	0.00	gm/cc
Density Z/A Correction	Hybrid	
Matrix Density (gm/cc)	Depth (ft)	
2.71	0.00	
0.00	0.00	
0.00	0.00	
0.00	0.00	
0.00	0.00	
0.00	0.00	
0.00	0.00	
0.00	0.00	

Caliper Calibration MPD-B 31

Base Calibration on 28-JAN-2013 08:35
Field Calibration on 05-FEB-2013 09:46

Base Calibration		Measured	Calibrator Size (in)
Reading No			
1		15824	3.99
2		24384	5.98
3		33040	7.97
4		41376	9.86
5		50943	11.92
6		N/A	N/A
Field Calibration		Measured Caliper (in)	Actual Caliper (in)
		5.99	5.98

DOWNHOLE EQUIPMENT

C:\Minimus 13.04.8492\Data\Shakespeare Holaday #1-19\Shakespeare Holaday #1-19_001.dta

Compact Comms Gamma
MCG-C 208 LG: 8.70 ft WT: 63.9 lb OD: 2.24 in

Compact Micro-Resistivity
MMR-A 11 LG: 8.59 ft WT: 81.6 lb OD: 4.88 in

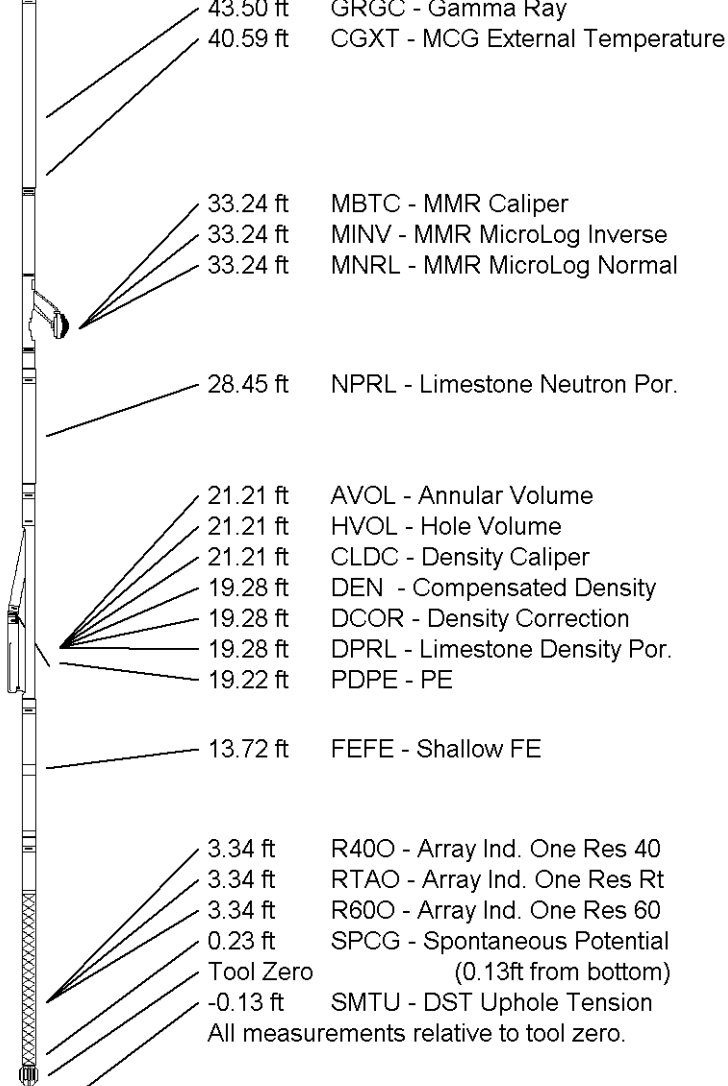
Compact Neutron
MDN-A.B 65 LG: 5.04 ft WT: 50.7 lb OD: 2.24 in

Compact Density/Caliper
MPD-B 31 LG: 9.59 ft WT: 90.4 lb OD: 2.45 in

Compact Focussed Electric
MFE-B.J 352 LG: 6.05 ft WT: 48.5 lb OD: 2.24 in

Compact Induction
MAI-A.A 45 LG: 10.81 ft WT: 48.5 lb OD: 2.24 in

Total Length: 48.78 ft Weight: 383.6 lb



COMPANY SHAKESPEARE OIL COMPANY, INC.
WELL HOLADAY #1-19
FIELD WILDCAT
PROVINCE/COUNTY GOVE
COUNTRY/STATE U.S.A. / KANSAS

Elevation Kelly Bushing	2838.00	feet	First Reading	4616.00	feet
Elevation Drill Floor	2837.00	feet	Depth Driller	4620.00	feet
Elevation Ground Level	2828.00	feet	Depth Logger	4619.00	feet



**ARRAY INDUCTION
SHALLOW FOCUSED
ELECTRIC LOG**

Weatherford®

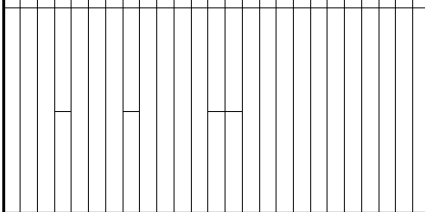
Weatherford		AR
SHAKESPEARE OIL COMPANY		SH
WELL: HOLADAY #1-19		E
FIELD: WILDCAT		
PROVINCE/COUNTY: GOVE		
COUNTRY/STATE: U.S.A. / KANSAS		
LOCATION: 335° FSL & 947' FWL NW SE SW SW		
SEC: 19	TWP: 13S	Other Services
SPR: 30W	MR/DIM/N	
Print Number: 15-083-21989		
Permanent Datum (G.L. Elevation 2828 feet)		
Log Measured From (G)		
Drilling Measured From (K.B)		
Date: 08-FEB-2013	Run Number: ONE	
Service Order: 3337829	Depth Driller: 4620.00	feet
Depth Logger: 4619.00	First Reading: 4616.00	feet
Last Reading: 221.00	Casing Driller: 221.00	feet
Casing Logger: 221.00	Bit Size: 7.875	inches
Foam Fluid Type: CHEMICAL	IBU/Sg	
Density/Viscosity: 9.20 lb/USg	53.00	9.50
PH / Fluid Loss: 9.50	FLOWLINE	
Sample Source: FLOWLINE	Flowline	
Flowline @ Measured Temp: 1.15 @ 82.0	Flowline	
Flowline @ Measured Temp: 0.97 @ 82.0	Flowline	
Flowline @ Measured Temp: 1.38 @ 82.0	Flowline	
Flowline @ Measured Temp: 0.82 @ 116.0	Flowline	
Flowline @ Measured Temp: 0.82 @ 116.0	Flowline	
Time Since Circulation: 5 HOURS	deg F	
Max Recorded Temp: 116.00	deg F	
Equipment/Case: 13087	LIB	
Recorded By: LNN SCOTT		
Witnessed By: TIM PREST		
Checked By: LBT-3437		

RAY INDUCTION
ALLOW FOCUSED
ELECTRIC LOG

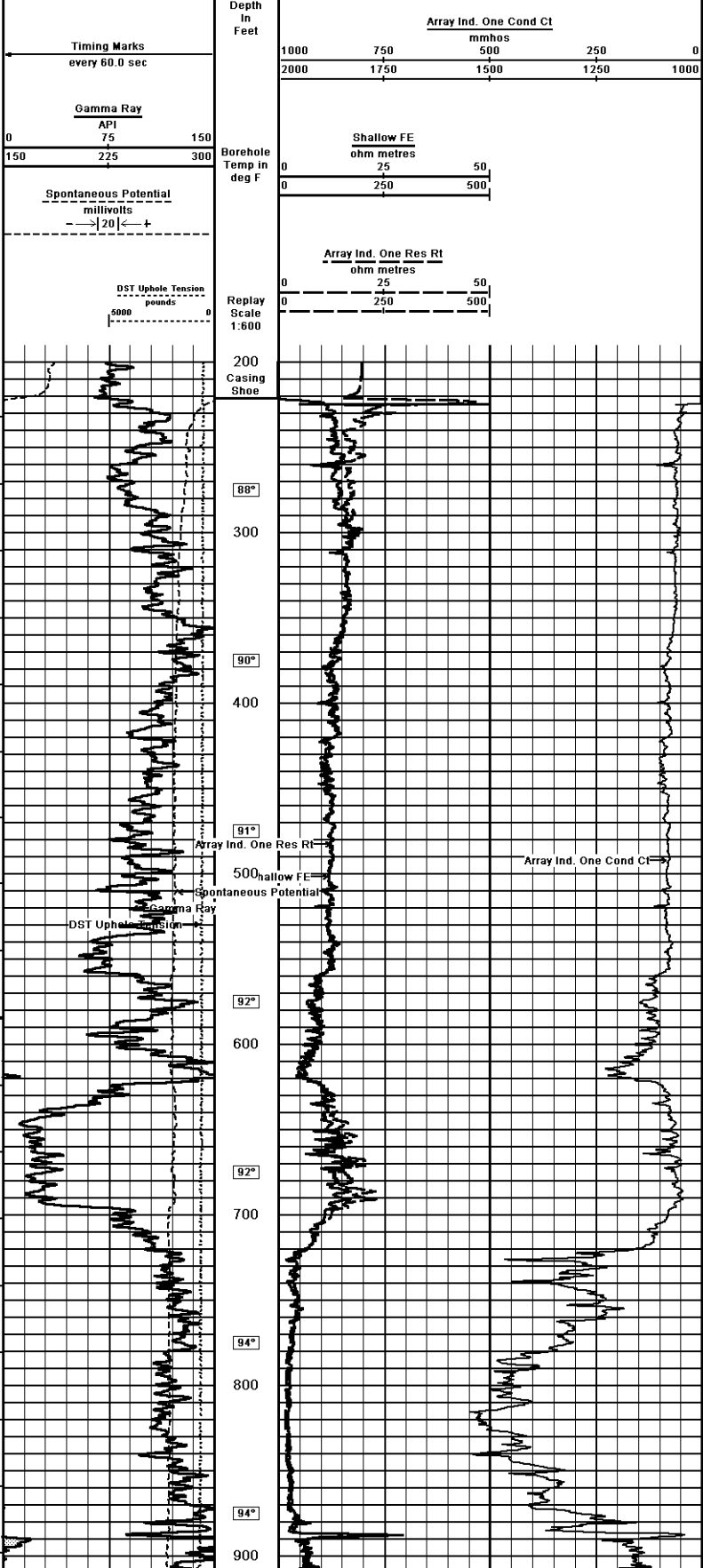
MPANY, INC.

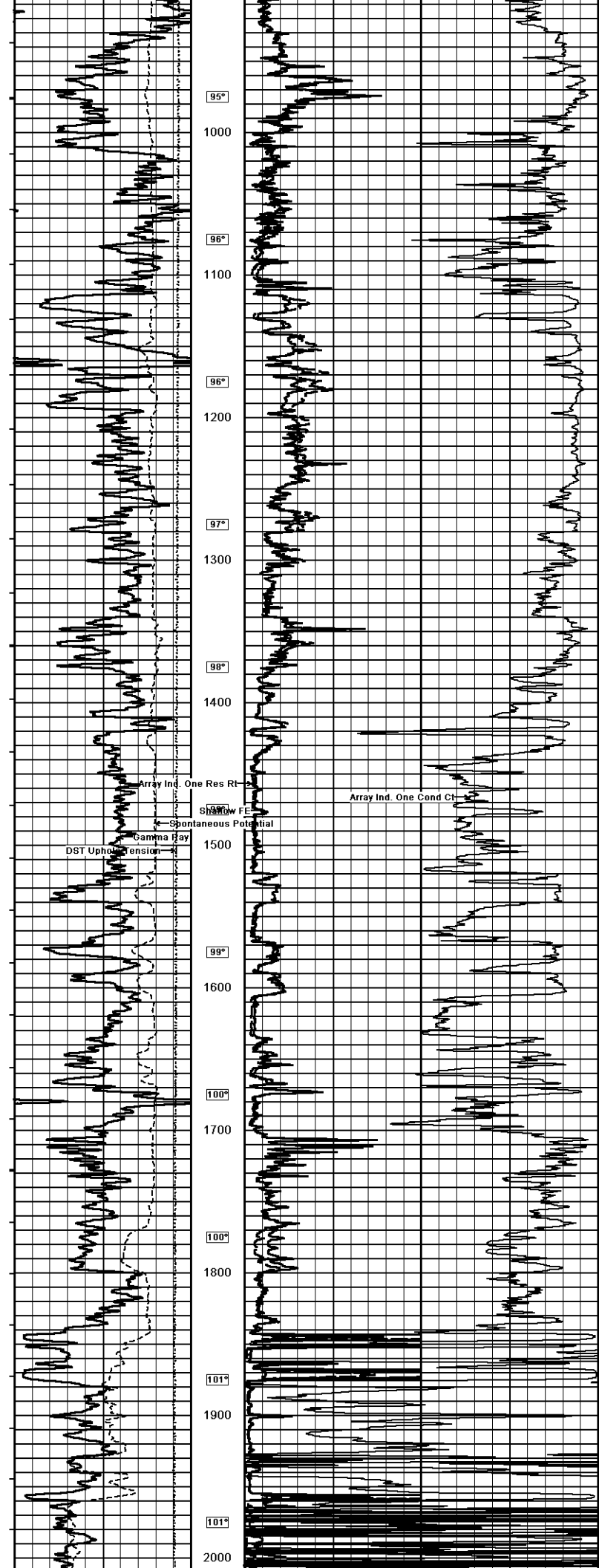
MML

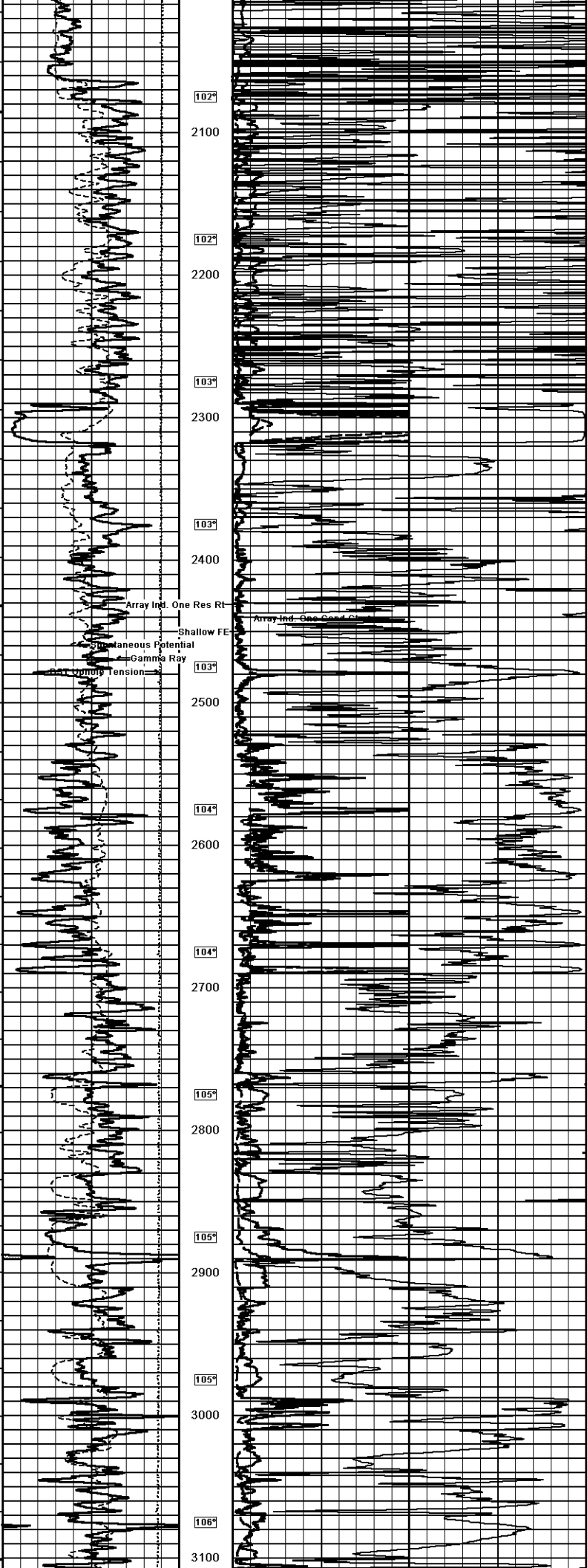
Revisions:
1st 2/28/00
2nd 2/28/00
3rd 2/28/00

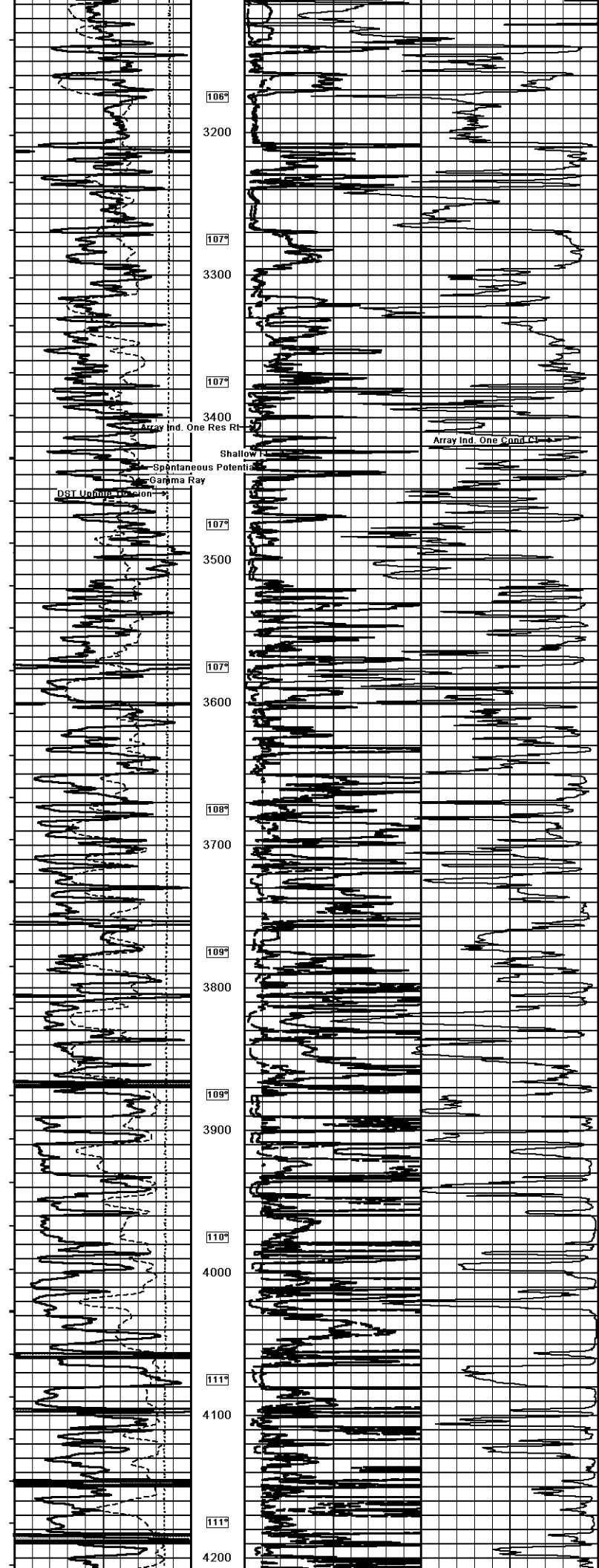


1 INCH MAIN
Depth Based Data - Maximum Sampling Increment 10.0cm
Filename: C:\Minimus 13.04.8492\Data\Shakespeare Holiday #1-19\Shakespeare Holiday #1-19_002.dta
System Versions: Logged with 13.04.8492 Plotted with 13.04.8492
Plotted on 08-FEB-2013 20:24
Recorded on 08-FEB-2013 18:05









106°

3200

107°

3300

107°

3400

107°

3500

107°

3600

108°

3700

109°

3800

109°

3900

110°

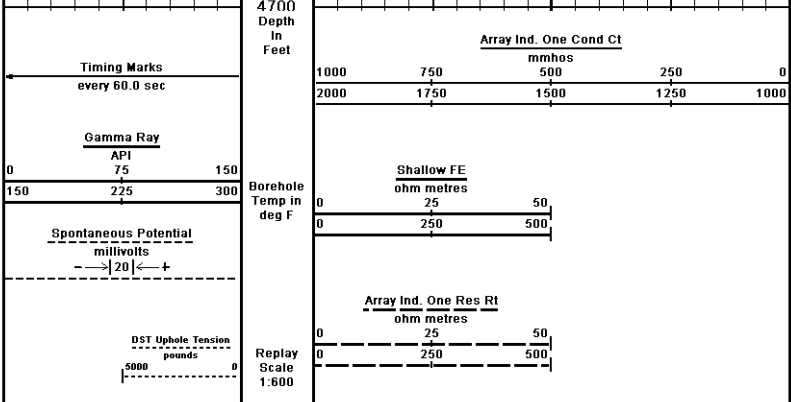
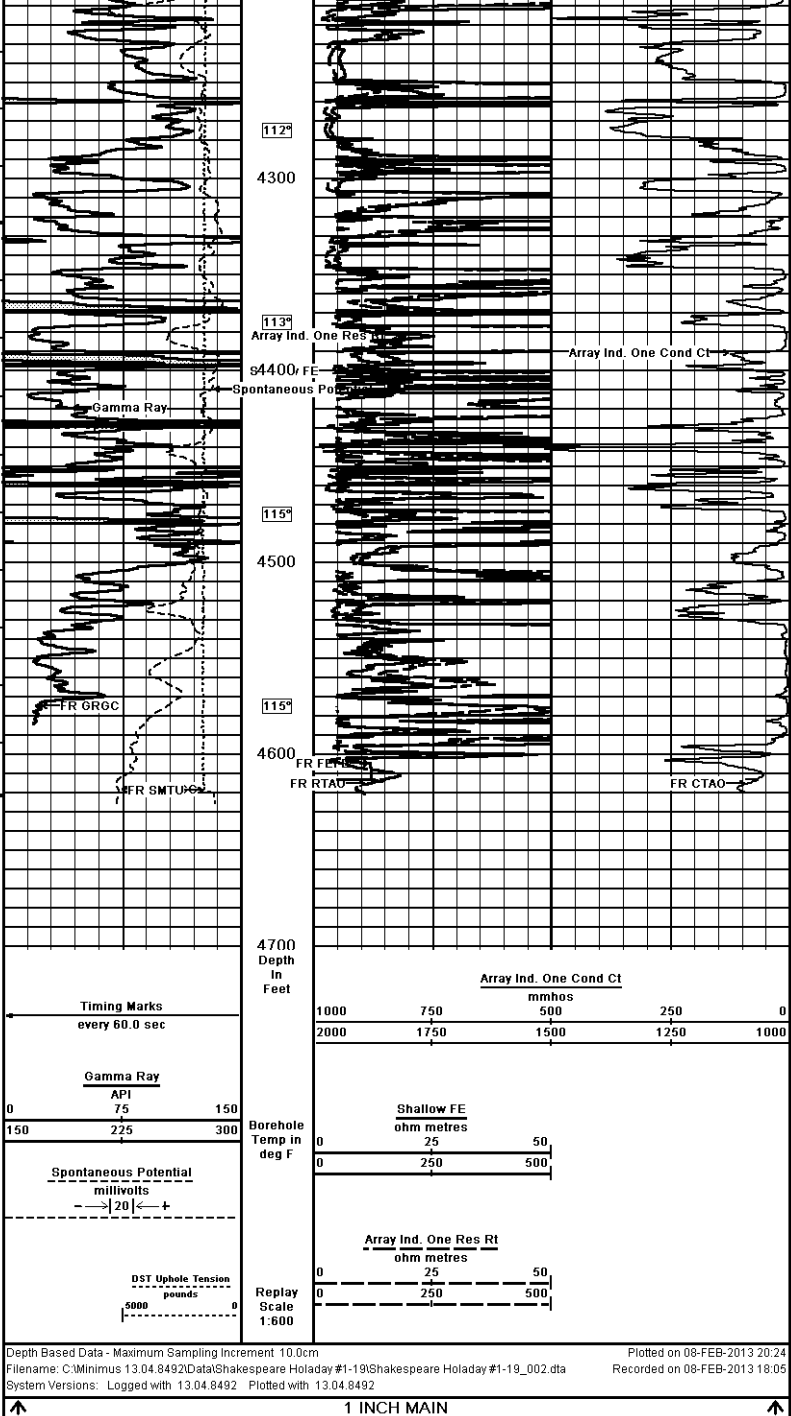
4000

111°

4100

111°

4200




Depth Based Data - Maximum Sampling Increment 10.0cm
 Plotted on 08-FEB-2013 20:24
 Filename: C:\Minimus 13.04.8492\Data\Shakespeare Holaday #1-19\Shakespeare Holaday #1-19_002.dta
 Recorded on 08-FEB-2013 18:05
 System Versions: Logged with 13.04.8492 Plotted with 13.04.8492

1 INCH MAIN

COMPANY SHAKESPEARE OIL COMPANY, INC.
 WELL HOLADAY #1-19
 FIELD WILDCAT
 PROVINCE/COUNTY GOVE
 COUNTRY/STATE U.S.A. / KANSAS

Elevation Kelly Bushing	2838.00	feet	First Reading	4616.00	feet
Elevation Drill Floor	2837.00	feet	Depth Driller	4620.00	feet
Elevation Ground Level	2828.00	feet	Depth Logger	4619.00	feet



ARRAY INDUCTION
 SHALLOW FOCUSED
 ELECTRIC LOG