

**COMPLETION  
& PRODUCTION  
SERVICES CO.**

**MICRO  
LOG**

Company CITATION OIL & GAS CORPORATION  
Well GICK #9  
Field BARRY  
County ROOKS State KANSAS

Company CITATION OIL & GAS CORPORATION  
Well GICK #9  
Field BARRY  
County ROOKS  
State KANSAS

Location: API #: 15-163-24086-0000  
1650' FSL & 990' FWL  
SEC 1 TWP 9S RGE 19W  
Permanent Datum GROUND LEVEL Elevation 2027  
Log Measured From KELLY BUSHING 11' A.G.L.  
Drilling Measured From KELLY BUSHING  
Other Services  
CDL/CNL/PE  
DIL  
Elevation  
K.B. 2038  
D.F. 2036  
G.L. 2027

Date	1/22/13
Run Number	TW0
Depth Driller	3492
Depth Logger	3494
Bottom Logged Interval	3492
Top Log Interval	2500
Casing Driller	1402
Casing Logger	1412
Bit Size	7.875
Type Fluid in Hole	CHEMICAL MUD
Density / Viscosity	8.839
pH / Fluid Loss	9.07/.6
Source of Sample	FLOWLINE
Rim @ Meas. Temp	.90 @ 60F
Rmf @ Meas. Temp	.67 @ 60F
Rmc @ Meas. Temp	1.08 @ 60F
Source of Rmf / Rmc	MEASURED
Rim @ BHT	.48 @ 111F
Time Circulation Stopped	3 HOURS
Time Logger on Bottom	
Maximum Recorded Temperature	111F
Equipment Number	860
Location	HAYS, KS.
Recorded By	JASON CAPPELLUCCI
Witnessed By	ED GLASSMAN

<<< Fold Here >>>

All interpretations are opinions based on inferences from electrical or other measurements and we cannot and do not guarantee the accuracy or correctness of any interpretation, and we shall not, except in the case of gross or willful negligence on our part, be liable or responsible for any loss, costs, damages, or expenses incurred or sustained by anyone resulting from any interpretation made by any of our officers, agents or employees. These interpretations are also subject to our general terms and conditions set out in our current Price Schedule.

Comments

NABORS COMPLETION & PRODUCTION CO.  
785-628-6395  
THANK YOU FOR YOUR BUSINESS  
DIRECTIONS: ZURICH, KS. - 4 N. - 2 E. - 1/4 N. - E. INTO



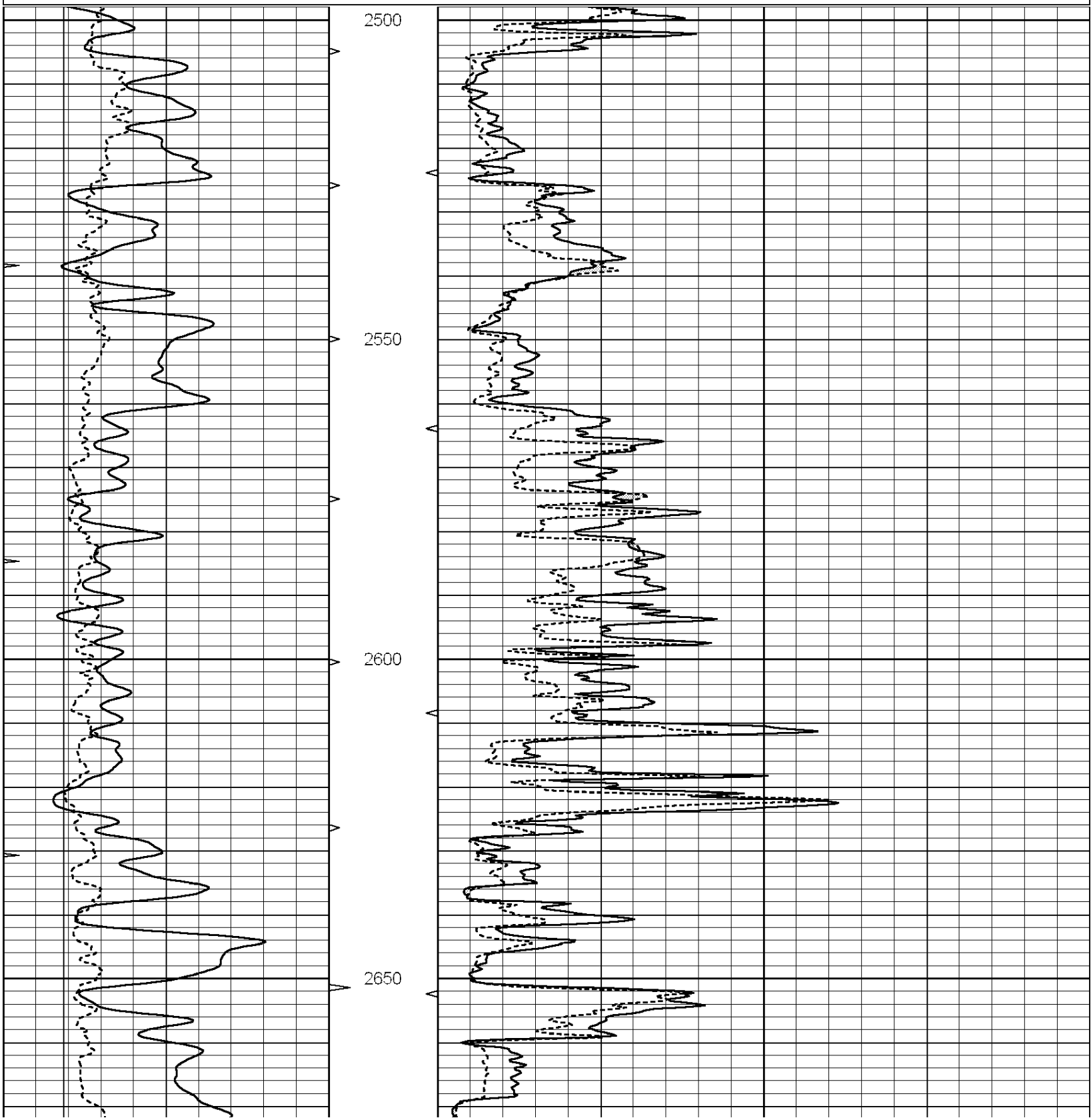
**COMPLETION  
& PRODUCTION**

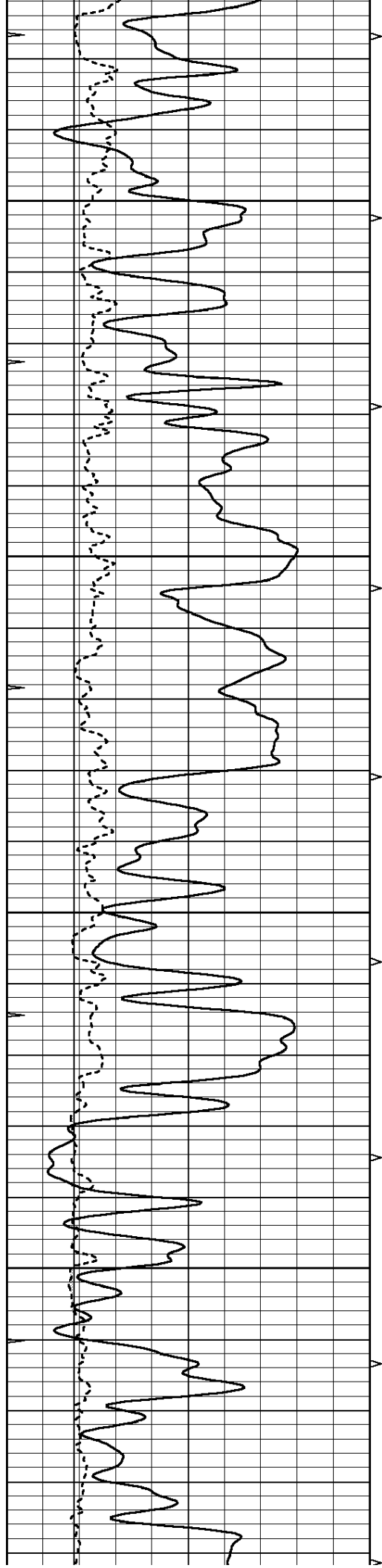
**MAIN SECTION**

Database File: 010656pe.db  
 Dataset Pathname: pass7.1  
 Presentation Format: micro  
 Dataset Creation: Tue Jan 22 07:51:47 2013 by Calc Open-Cased 090629  
 Charted by: Depth in Feet scaled 1:240

0	GAMMA RAY (GAPI)	150
6	MELCAL (in)	16
0	MINMK	20

0	MEL1.5 (Ohm-m)	40
0	MEL2.0 (Ohm-m)	40



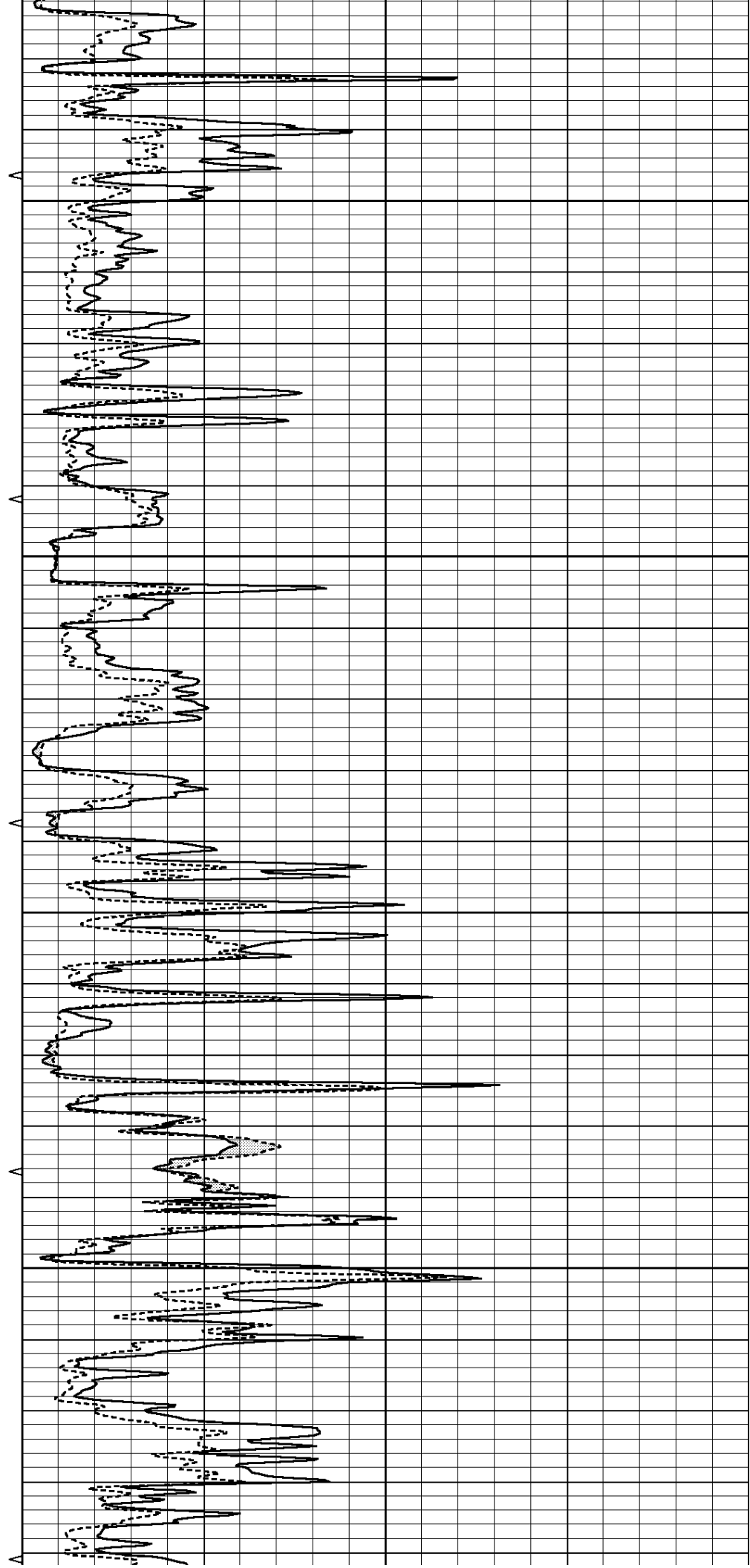


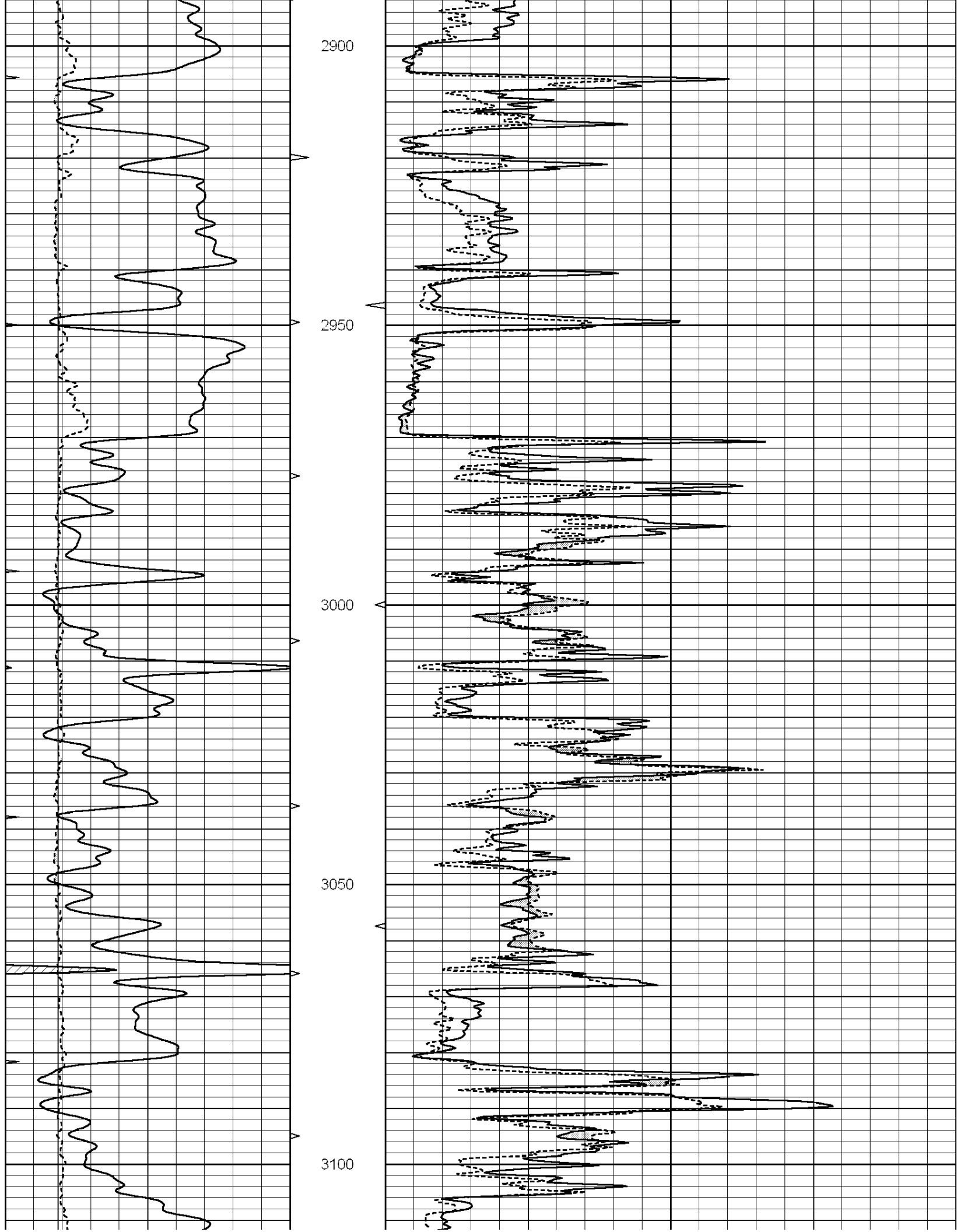
2700

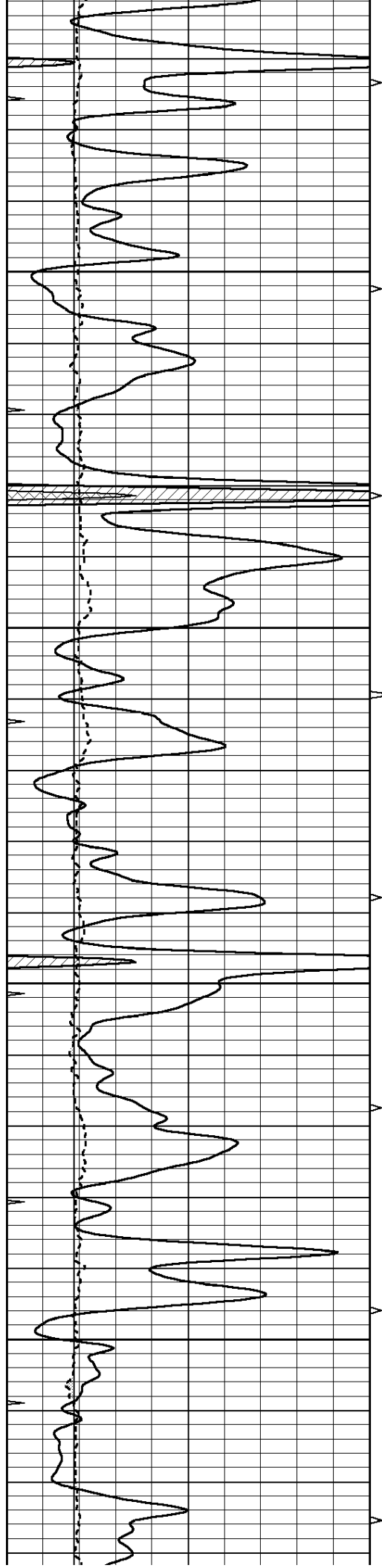
2750

2800

2850





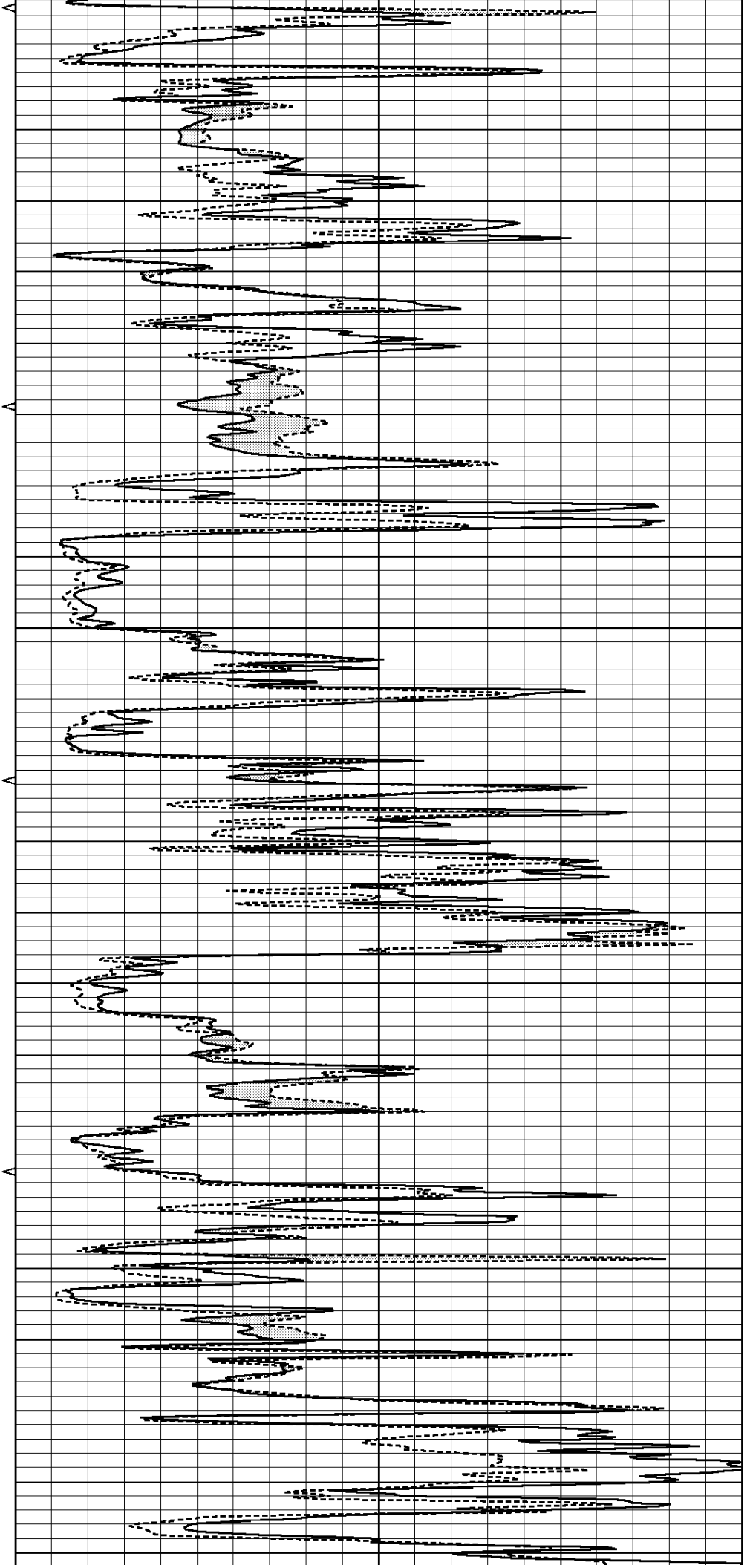


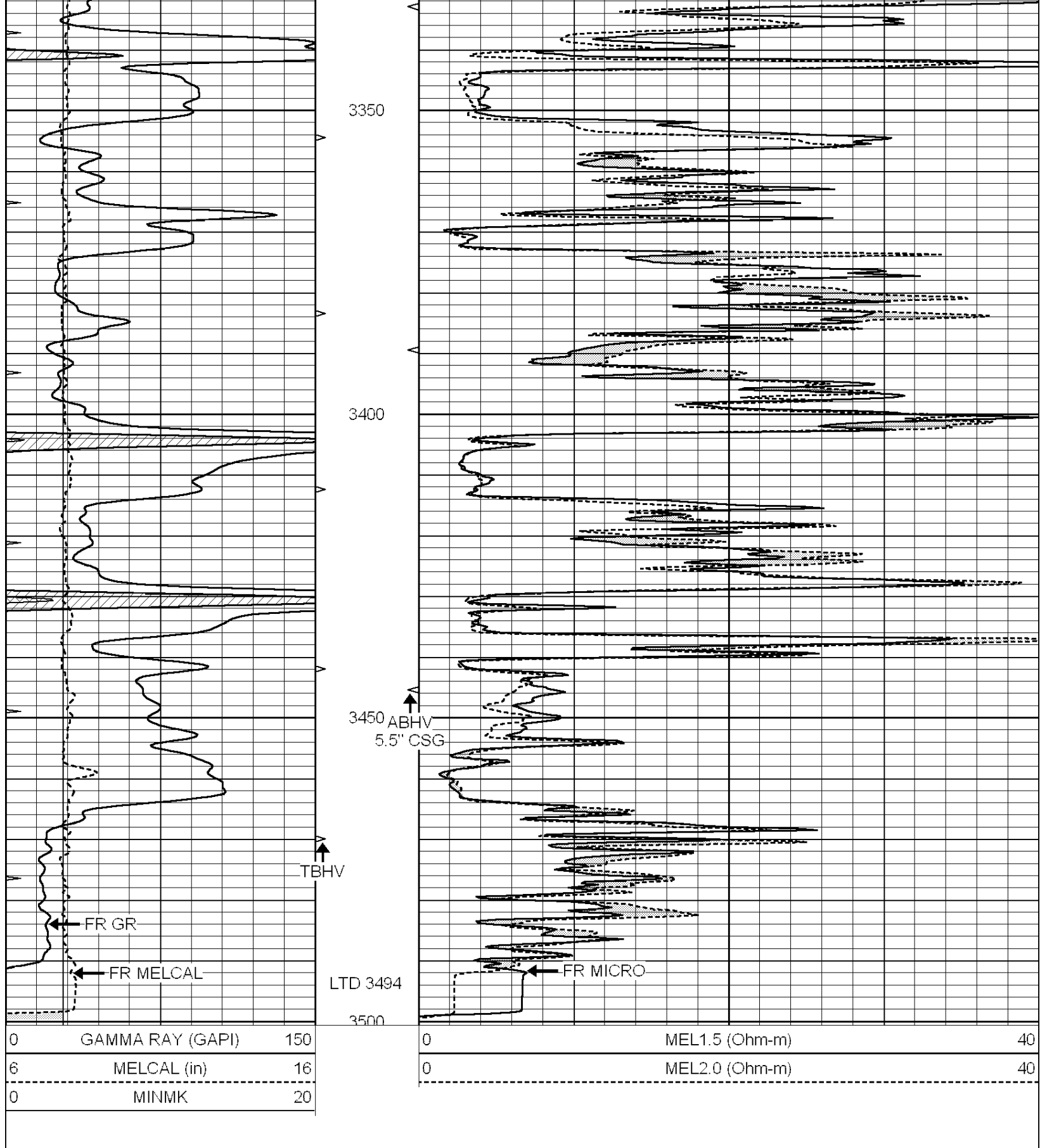
3150

3200

3250

3300



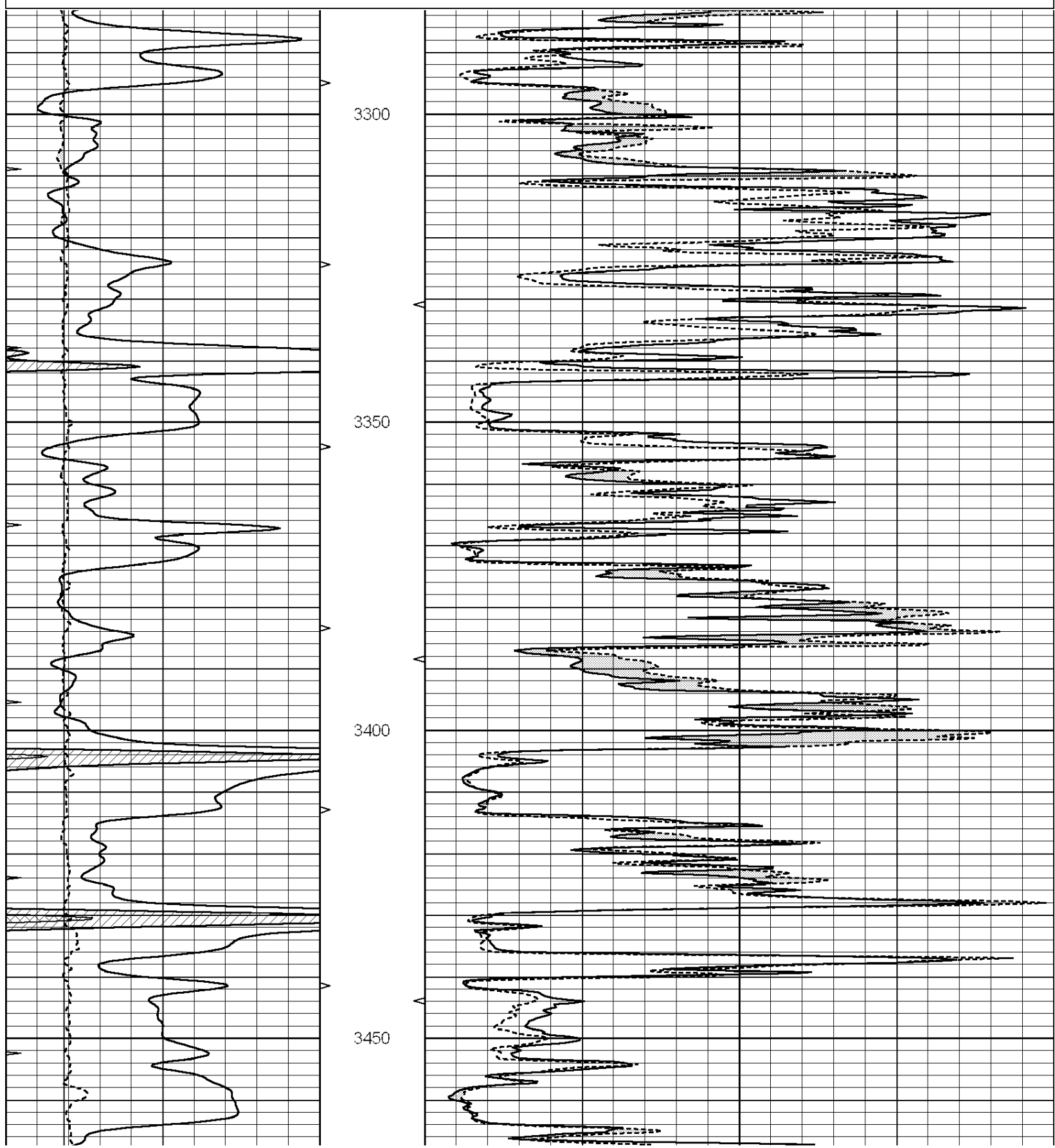


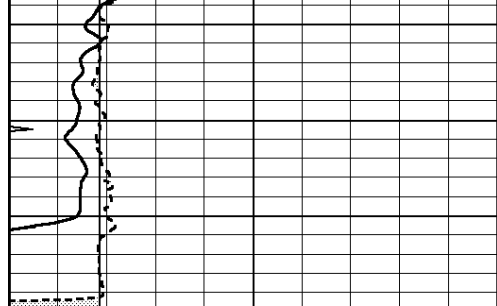
# REPEAT SECTION

Dataset Pathname: pass6.1  
 Presentation Format: micro  
 Dataset Creation: Tue Jan 22 07:49:20 2013 by Calc Open-Cased 090629  
 Charted by: Depth in Feet scaled 1:240

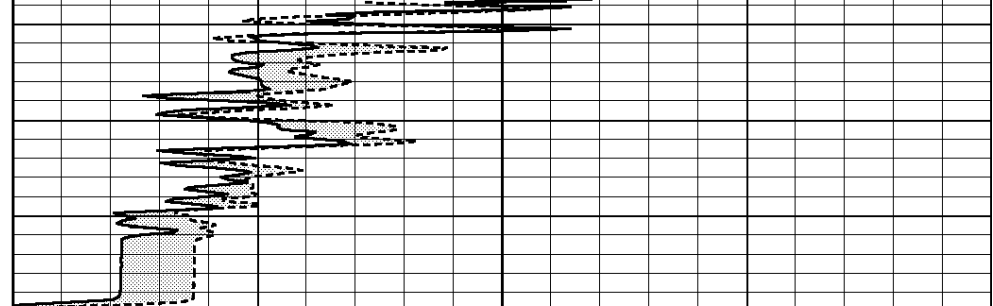
0	GAMMA RAY (GAPI)	150
6	MELCAL (in)	16
-----		
0	MINMK	20

0	MEL1.5 (Ohm-m)	40
0	MEL2.0 (Ohm-m)	40
-----		





3500



0	GAMMA RAY (GAPI)	150
6	MELCAL (in)	16
0	MINMK	20

0	MEL1.5 (Ohm-m)	40
0	MEL2.0 (Ohm-m)	40

### Calibration Report

Database File: 010656pe.db  
 Dataset Pathname: pass7.1  
 Dataset Creation: Tue Jan 22 07:51:47 2013 by Calc Open-Cased 090629

### MICRO Calibration Report

Serial Number:	MICRO4	
Tool Model:	PROBE	
Performed:	Sat Jan 19 22:45:35 2013	
Caliper Calibration:	Gain=1.760	Offset=-2.033
References	Low Cal 8.600	High Cal 11.500
Readings	5.985	7.633
1.5" Calibration:	Gain=25.000	Offset=-1.000
References	Low Cal 0.000	High Cal 20.000
Readings	0.009	1.541
2" Calibration:	Gain=24.000	Offset=0.000
References	Low Cal 0.000	High Cal 20.000
Readings	0.004	1.198

### Gamma Ray Calibration Report

Serial Number:	GR2	
Tool Model:	OPEN	
Performed:	Sat Jan 19 22:43:37 2013	
Calibrator Value:	200.0	GAPI
Background Reading:	0.0	cps
Calibrator Reading:	740.0	cps
Sensitivity:	0.3300	GAPI/cps