



**Sonic Cement
Bond Log**

Pioneer Energy Services

API No.

15-051-26394-00-00

Company **Anderson Energy Inc.**

Well **MacDonald-Bondy No. 1**

Field **Wildcat**

County **Ellis** State **Kansas**

Location

1370' FSL & 2300' FEL

Other Services

Sec: **18** Twp: **15 S** Rge: **20 W**

Elevation

K.B. 2137

D.F. @

G.L. 2127

Elevation 2128

9 Ft. Above Perm. Datum

Ground Level

Kelly Bushing

Drilling Measured From

Kelly Bushing

Log Measured From

One

Run Number

Date Survey

11/09/2012

Date Cementing

10/31/2012

Type Cementing Operation

Primary

Depth Driller

40000

Depth Logger

3931

Logged Interval

3930 to 2700

Casing Driller

5.5 @ TD

Float Collar -- D.V. Tool

1328 @

Squeeze Depth

////

Amount & Type Cement

////

Amount & Type Admix

////

Type Fluid In Hole

Water

Fluid Level

150

Salinity PPM CL

////

Weight lb/gal -- Vis.

////

Apprx. Logged Cement Top

2890

Calculated Cement Top

////

Max. Hole Temperature

114

Tool No.

RBT3-6

Spacing Recorded

3'-5"

Equipment -- Location

18

Recorded By

D. Hagan

Witnessed By

Terry Plesker

<<< Fold Here >>>

All interpretations are opinions based on inferences from electrical or other measurements and we cannot and do not guarantee the accuracy or correctness of any interpretation, and we shall not, except in the case of gross or willful negligence on our part, be liable or responsible for any loss, costs, damages, or expenses incurred or sustained by anyone resulting from any interpretation made by any of our officers, agents or employees. These interpretations are also subject to our general terms and conditions set out in our current Price Schedule.

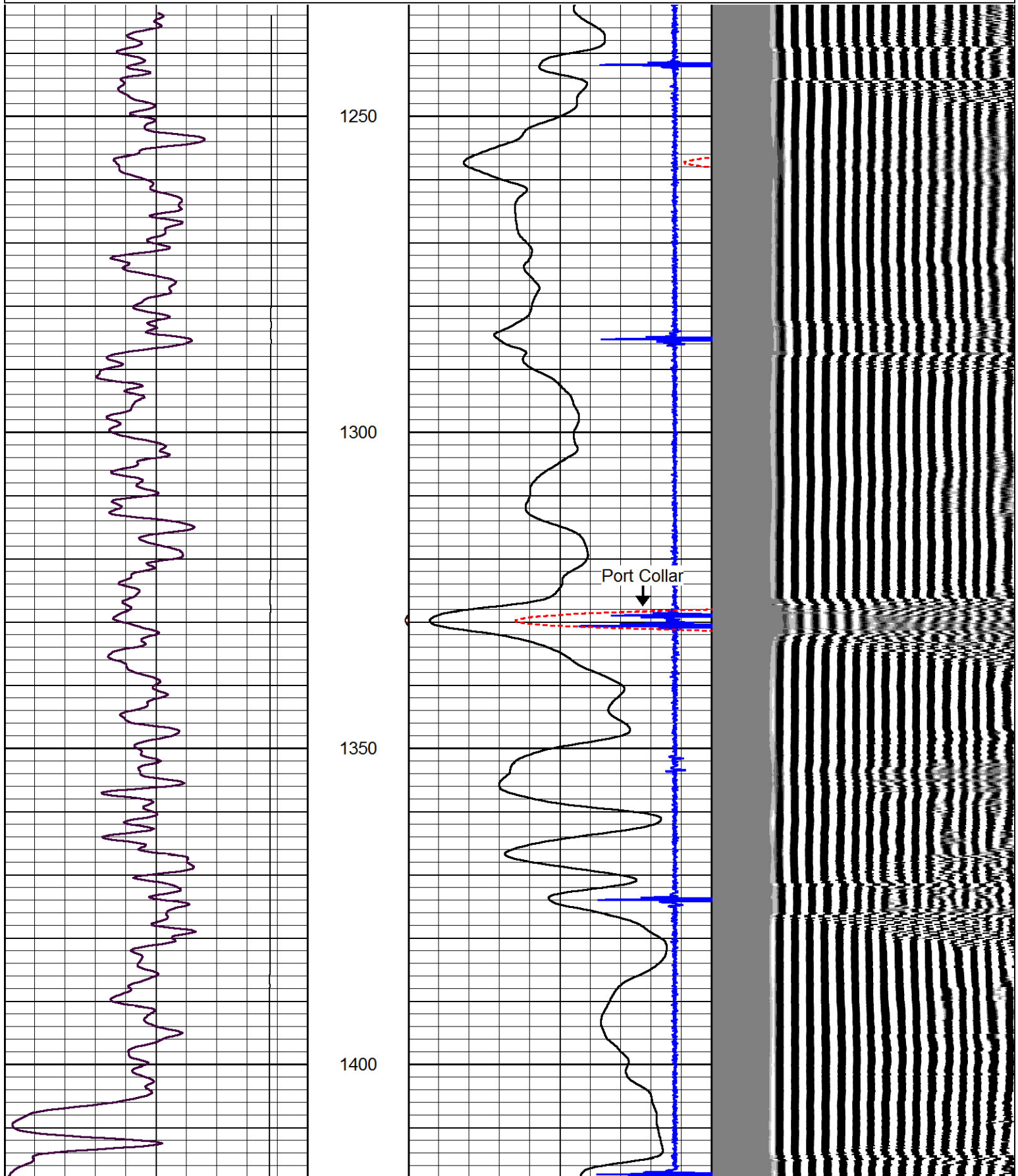
Comments

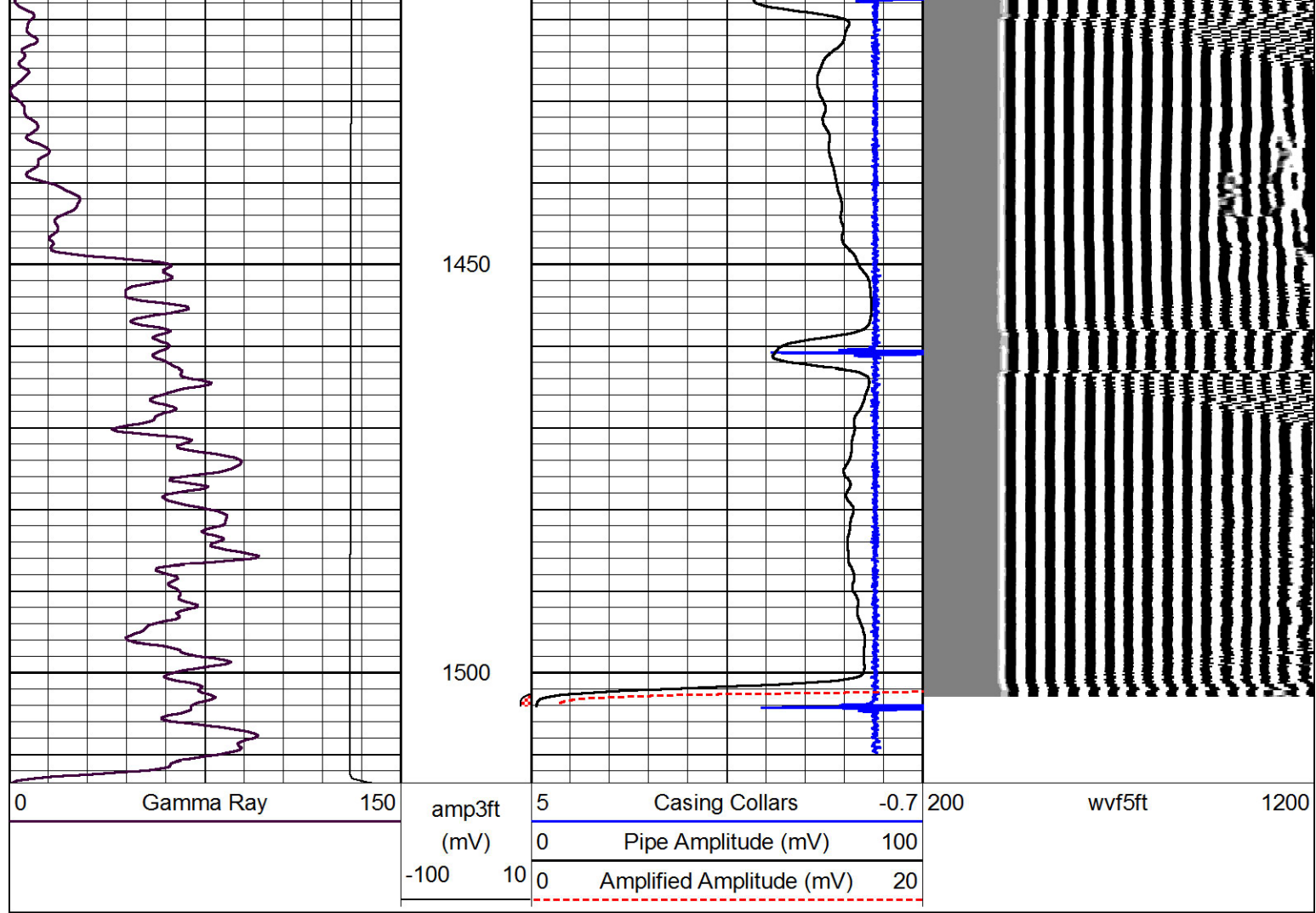
Thank you for using Pioneer Energy Services
785.625.3858

Antonino & Ellis Black tops, 1 South, 2 West,
2 South, East into

Database File: andersonenergy_1.db
 Dataset Pathname: grcbl/pass5
 Presentation Format: cblbr
 Dataset Creation: Fri Nov 09 09:24:59 2012 by Log SCH 120126
 Charted by: Depth in Feet scaled 1:240

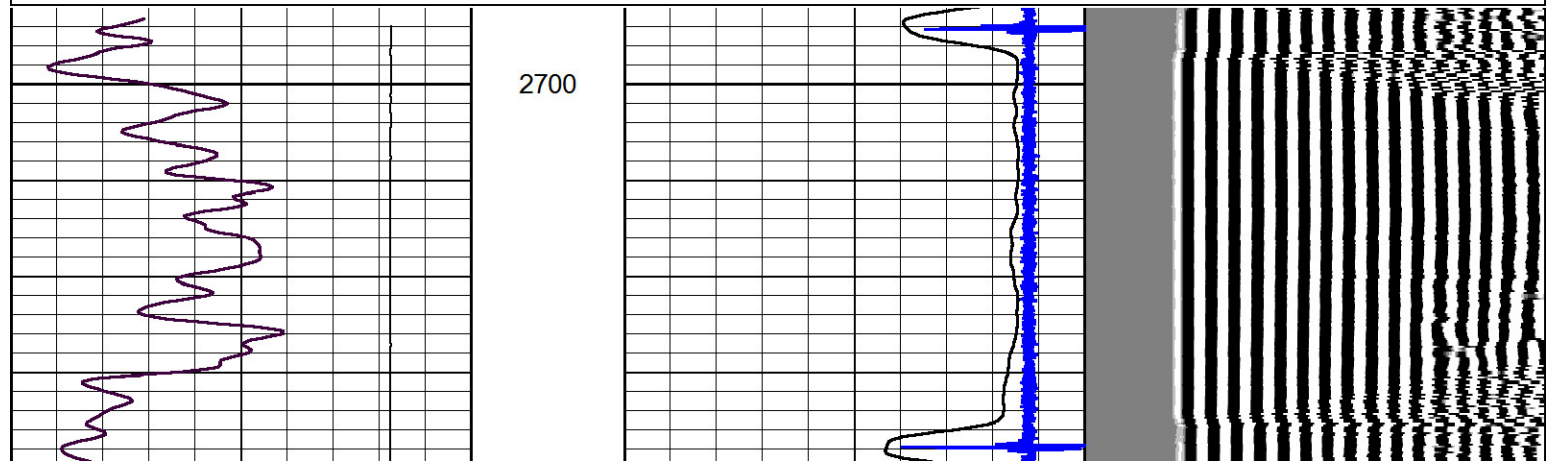
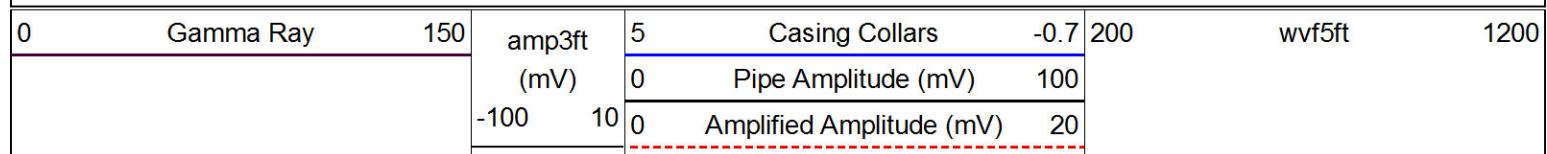
0	Gamma Ray	150	amp3ft	5	Casing Collars	-0.7	200	wvf5ft	1200
			(mV)	0	Pipe Amplitude (mV)	100			
			-100	10	Amplified Amplitude (mV)	20			

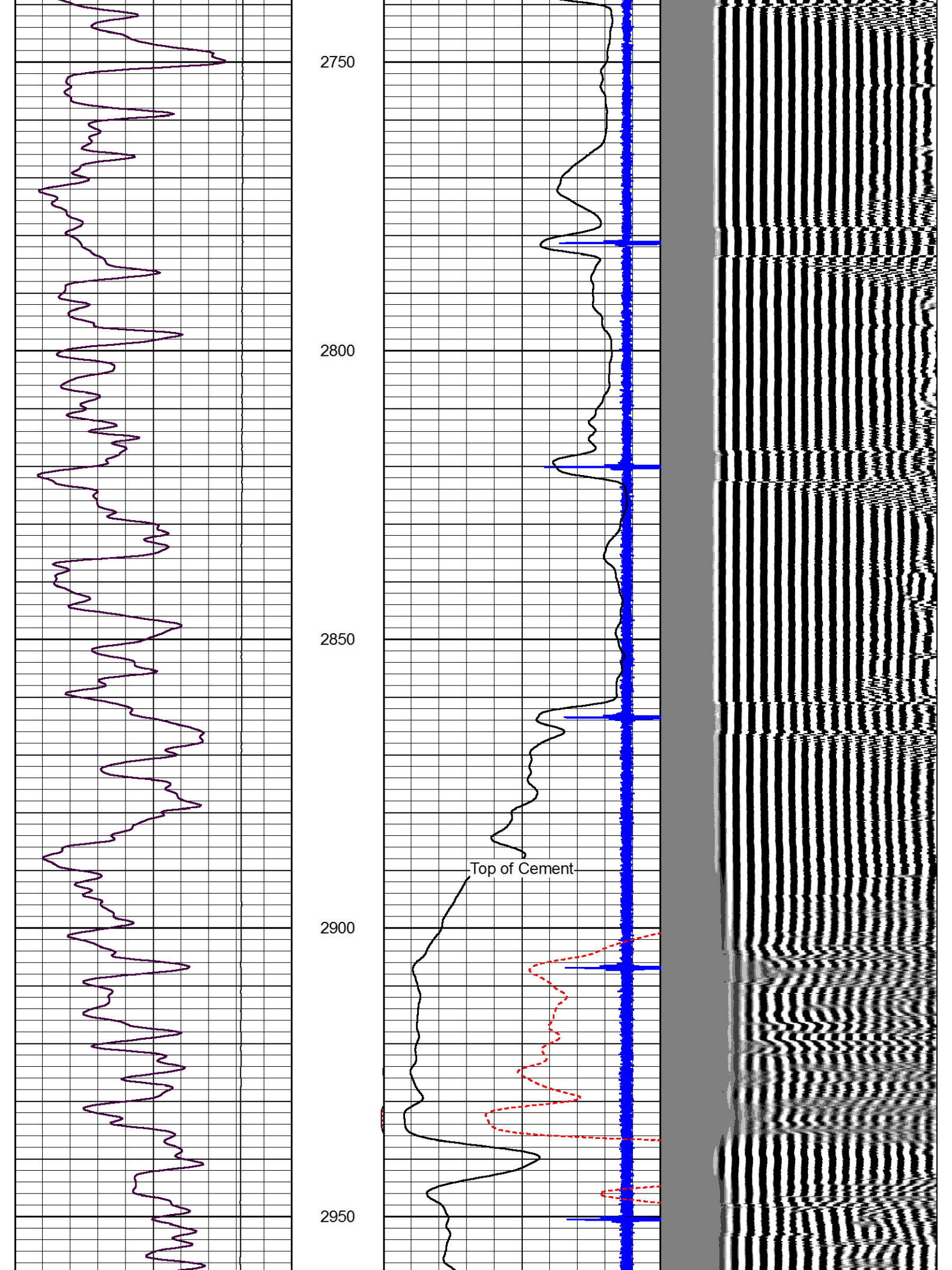


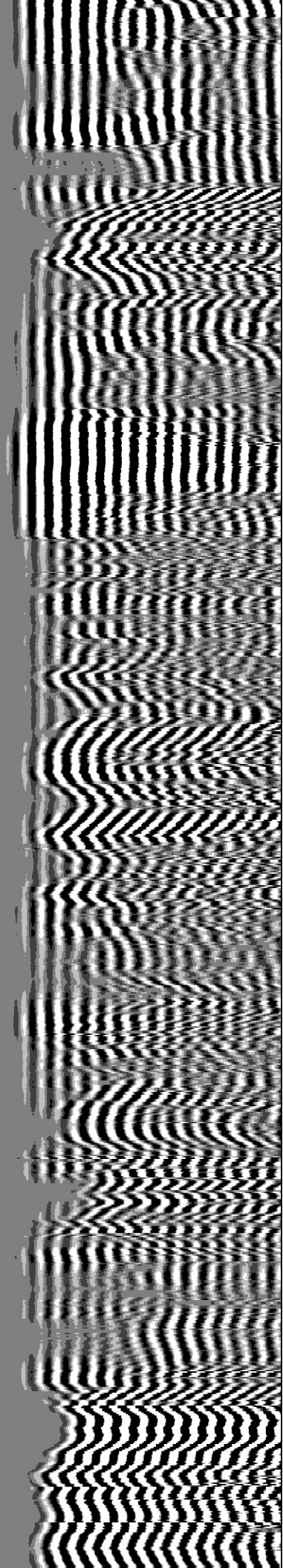
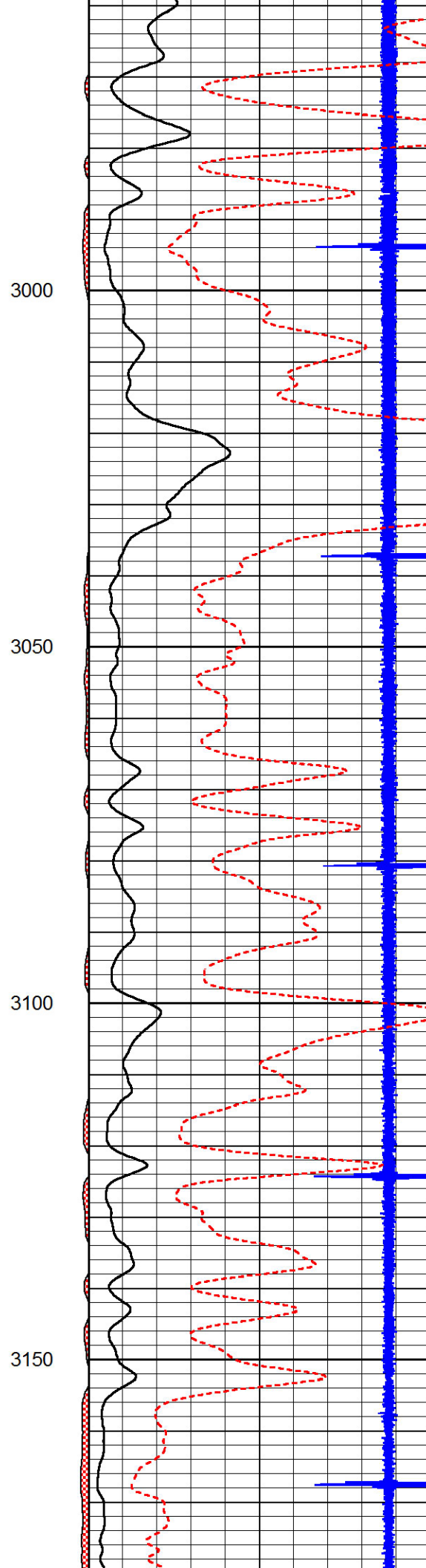
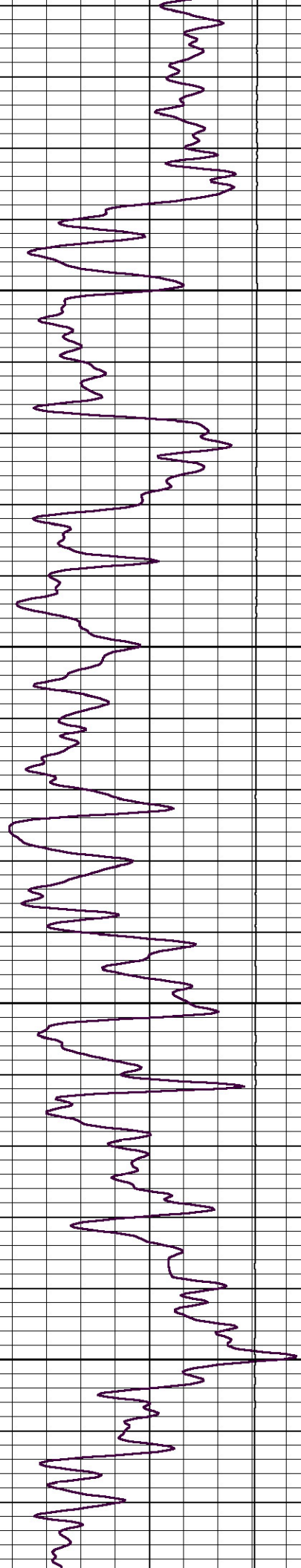


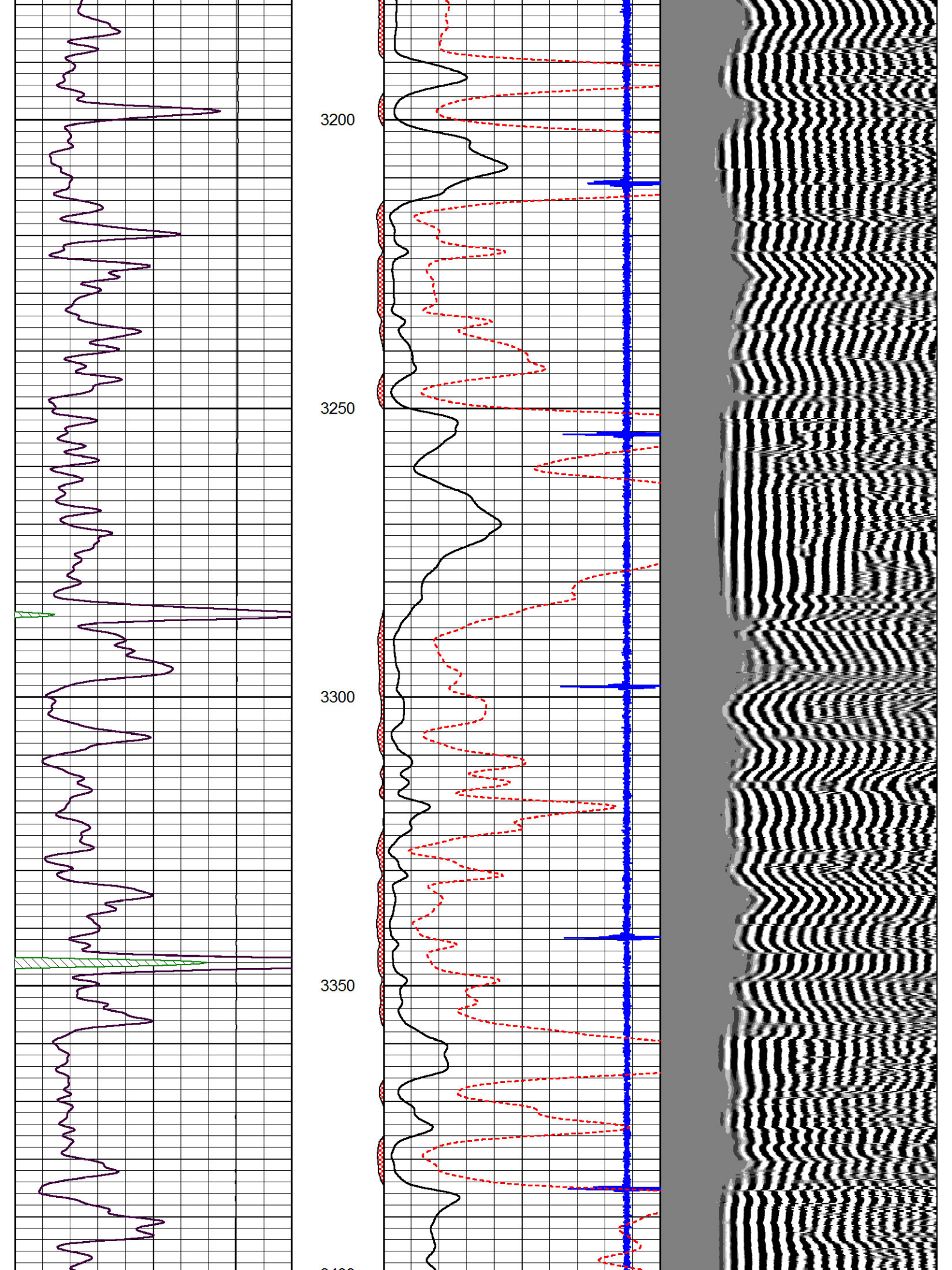
Main Pass

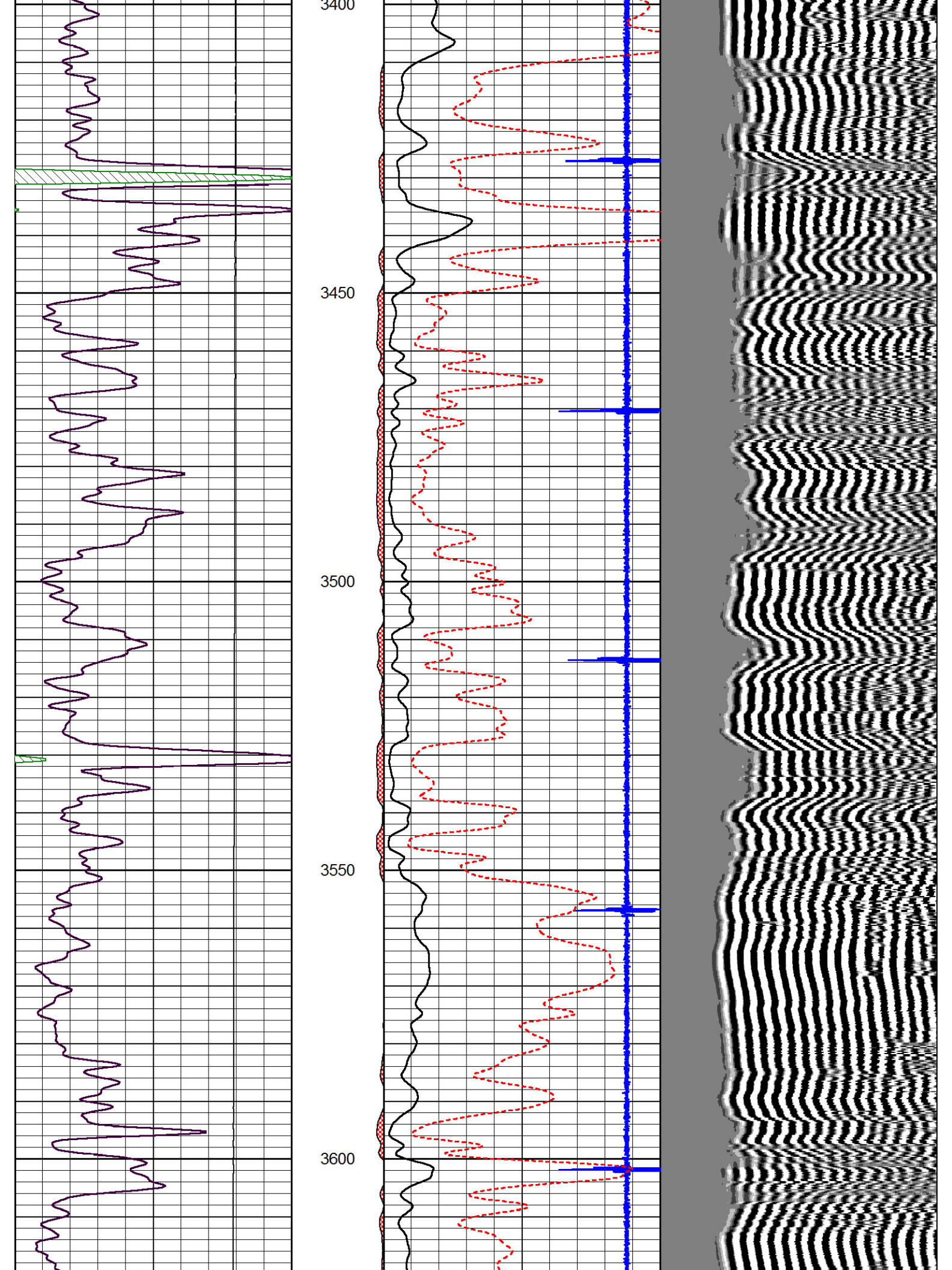
Database File: andersonenergy_1.db
 Dataset Pathname: grcbl/pass4
 Presentation Format: cbldr
 Dataset Creation: Fri Nov 09 08:54:00 2012 by Log SCH 120126
 Charted by: Depth in Feet scaled 1:240

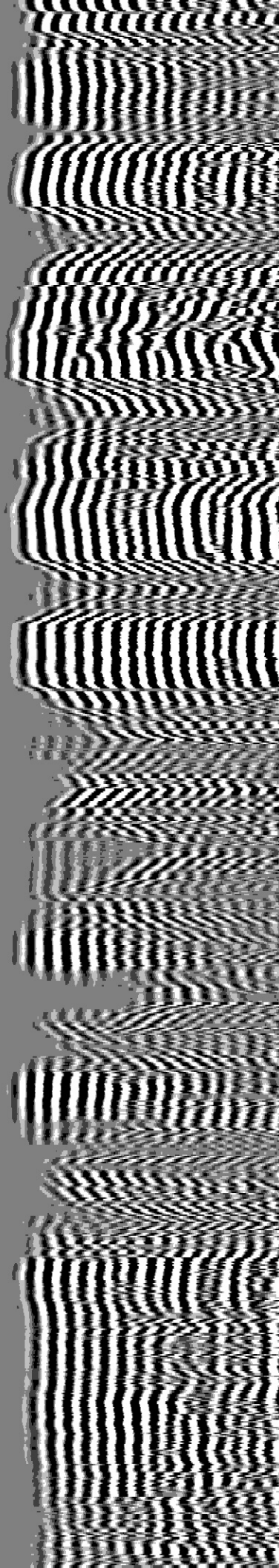
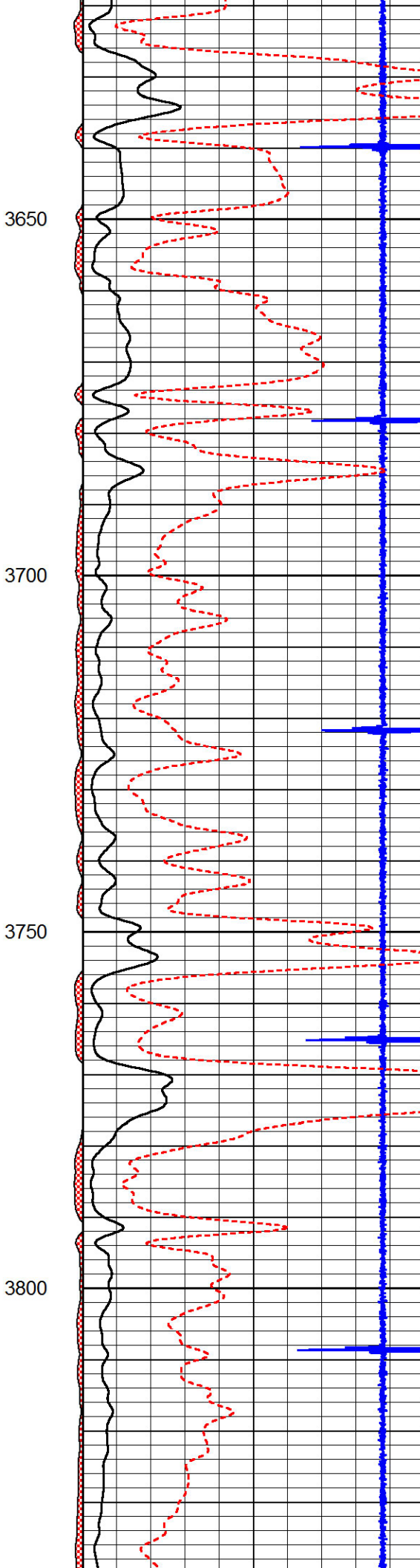
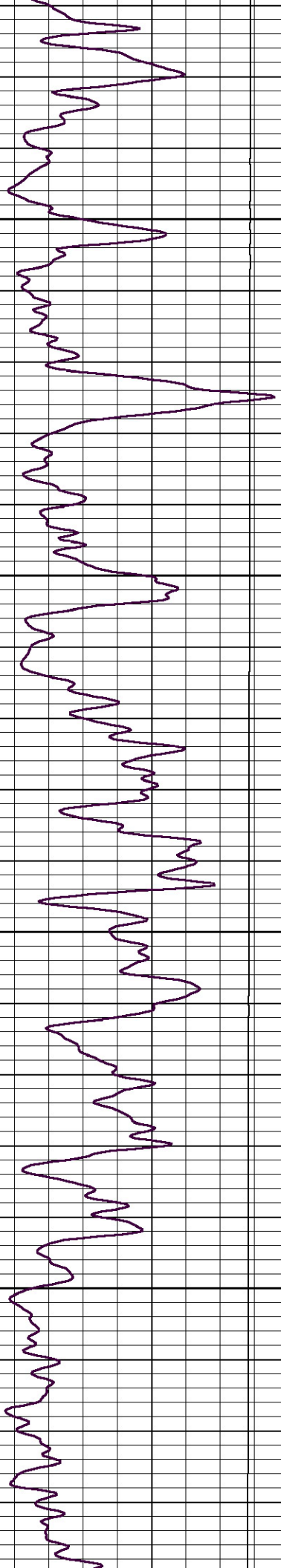


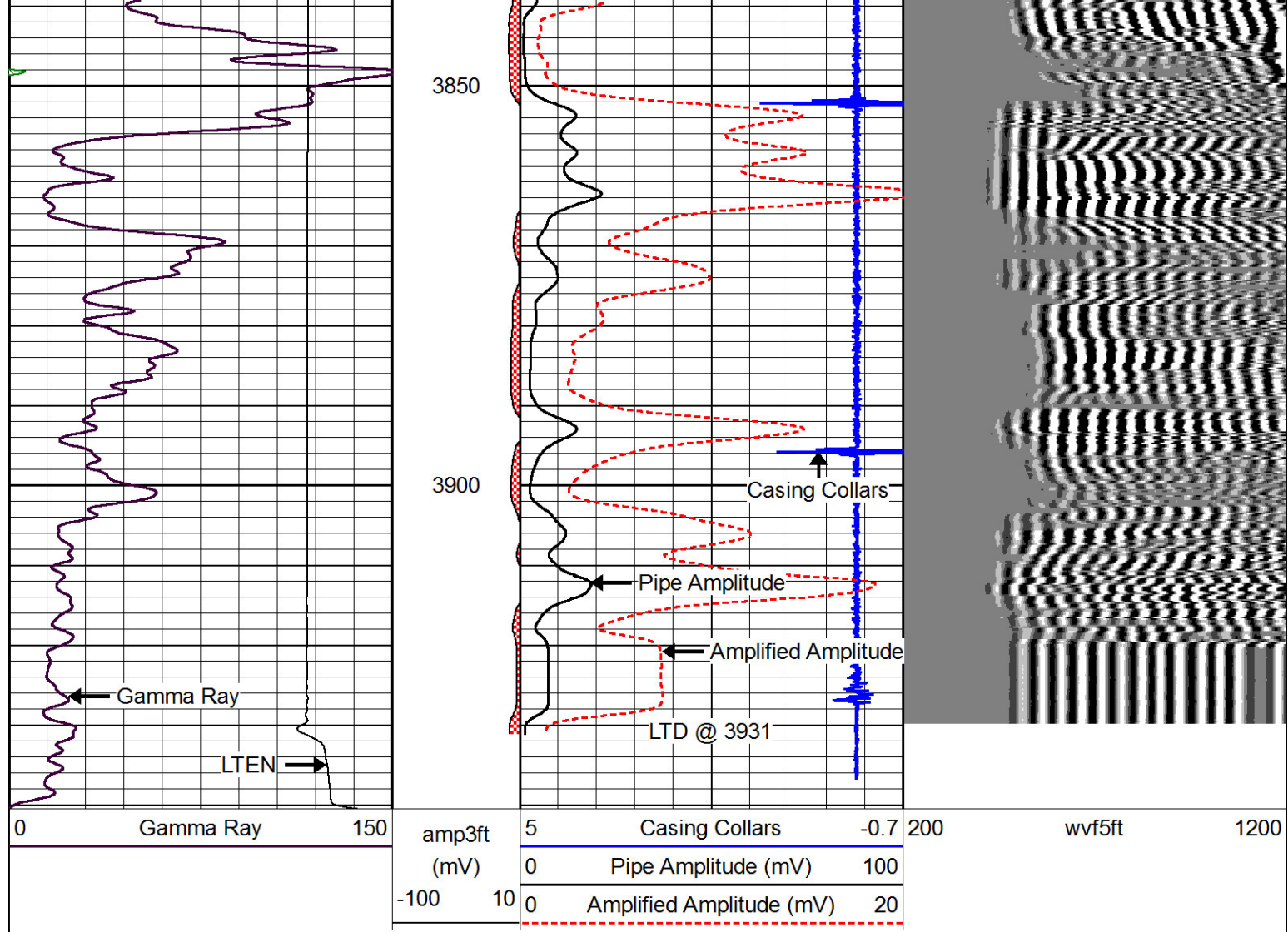








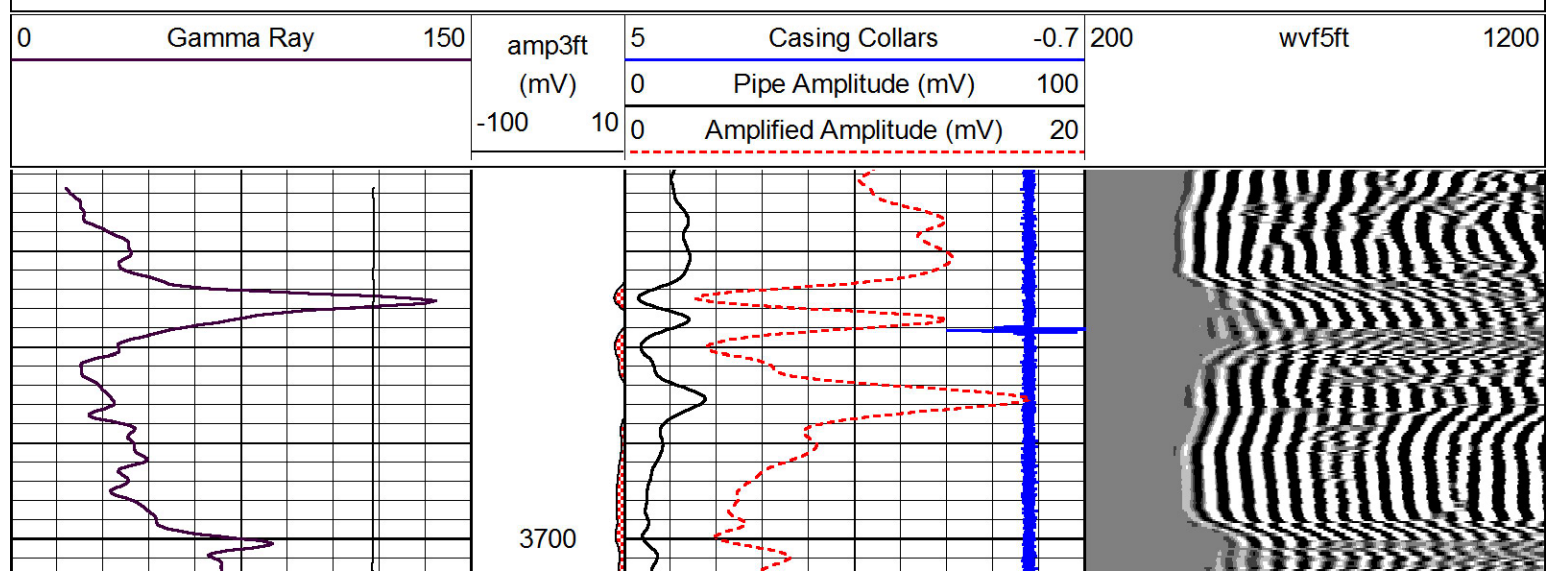


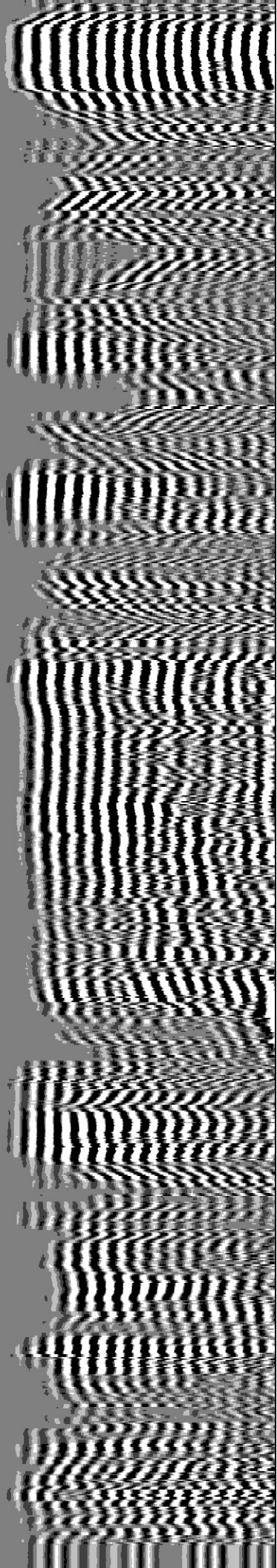
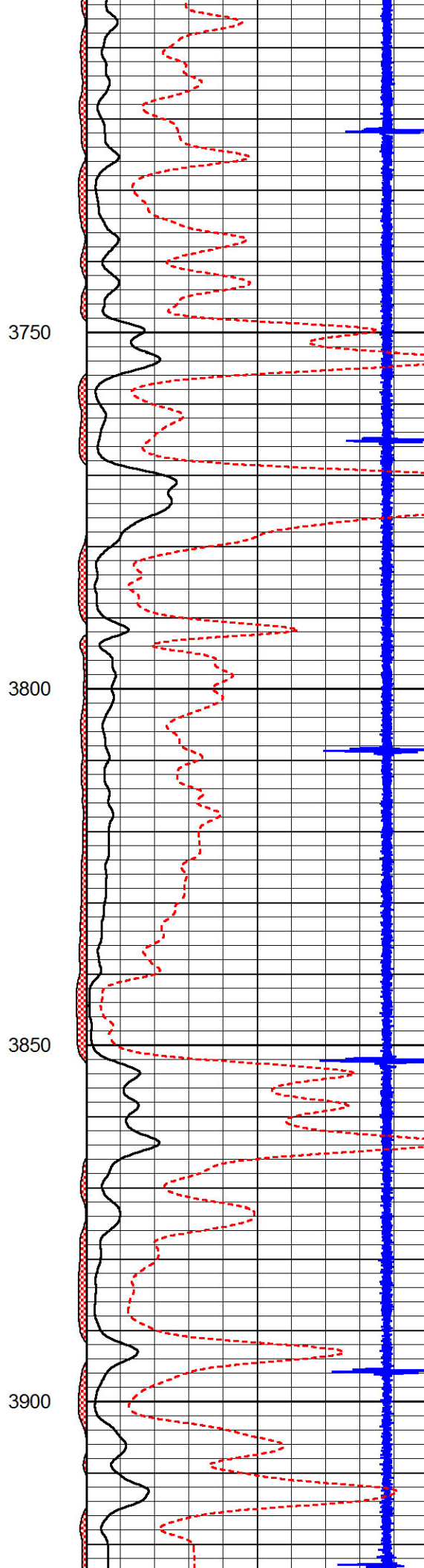
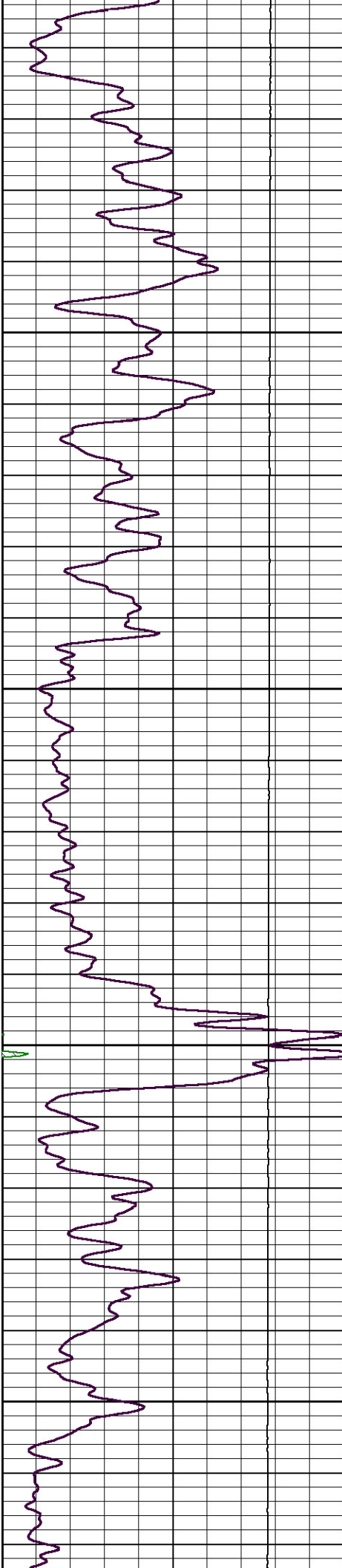


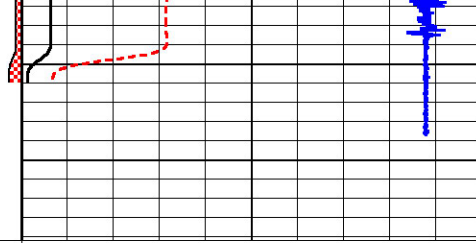
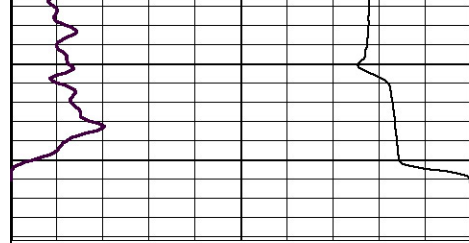
Pioneer Energy Services

Repeat Section

Database File: andersonenergy_1.db
 Dataset Pathname: grcbl/pass2
 Presentation Format: cbldr
 Dataset Creation: Fri Nov 09 08:24:02 2012 by Log SCH 120126
 Charted by: Depth in Feet scaled 1:240







0	Gamma Ray	150	amp3ft	5	Casing Collars	-0.7	200	wvf5ft	1200
			(mV)	0	Pipe Amplitude (mV)	100			
			-100 10	0	Amplified Amplitude (mV)	20			