



**COMPLETION
& PRODUCTION
SERVICES CO.**

**COMPENSATED
DENSITY / NEUTRON
LOG**

Company RED OAK ENERGY, INC.
Well BROWN #9-1
Field WILDCAT
County GRAHAM State KANSAS

Company RED OAK ENERGY, INC.
Well BROWN #9-1
Field WILDCAT
County GRAHAM
State KANSAS

Location: API #: 15-065-24068
2125' FSL & 420' FWL
SEC 9 TWP 7S RGE 24W
Permanent Datum GROUND LEVEL Elevation 2518
Log Measured From KELLY BUSHING 5' A.G.L.
Drilling Measured From KELLY BUSHING
Other Services
DIL
SONIC/MEL
Elevation
K.B. 2523
D.F.
G.L. 2518

Date	11-13-14
Run Number	ONE
Depth Driller	4050
Depth Logger	4050
Bottom Logged Interval	4026
Top Log Interval	3400
Casing Driller	303
Casing Logger	306
Bit Size	7.875
Type Fluid in Hole	CHEMICAL MUD
Density / Viscosity	8.9 / 50
pH / Fluid Loss	10.3 / 6.4
Source of Sample	FLOWLINE
Rim @ Meas. Temp	1.20 @ 70F
Rmf @ Meas. Temp	0.90 @ 70F
Rmc @ Meas. Temp	1.44 @ 70F
Source of Rmf / Rmc	MEASURED
Rim @ BHT	.730 @ 115F
Time Circulation Stopped	2 HOURS
Time Logger on Bottom	7:30 P.M.
Maximum Recorded Temperature	115F
Equipment Number	3802
Location	HAYS, KS.
Recorded By	RUPP
Witnessed By	SEAN DEENIHAN

<<< Fold Here >>>

All interpretations are opinions based on inferences from electrical or other measurements and we cannot and do not guarantee the accuracy or correctness of any interpretation, and we shall not, except in the case of gross or willful negligence on our part, be liable or responsible for any loss, costs, damages, or expenses incurred or sustained by anyone resulting from any interpretation made by any of our officers, agents or employees. These interpretations are also subject to our general terms and conditions set out in our current Price Schedule.

Comments

NABORS COMPLETION & PRODUCTION SERVICES
785-628-6395
THANK YOU FOR YOUR BUSINESS
DIRECTIONS: HILL CITY, 9W TO RD. #170, 6N TO RD.W, 3/4E, N INTO.

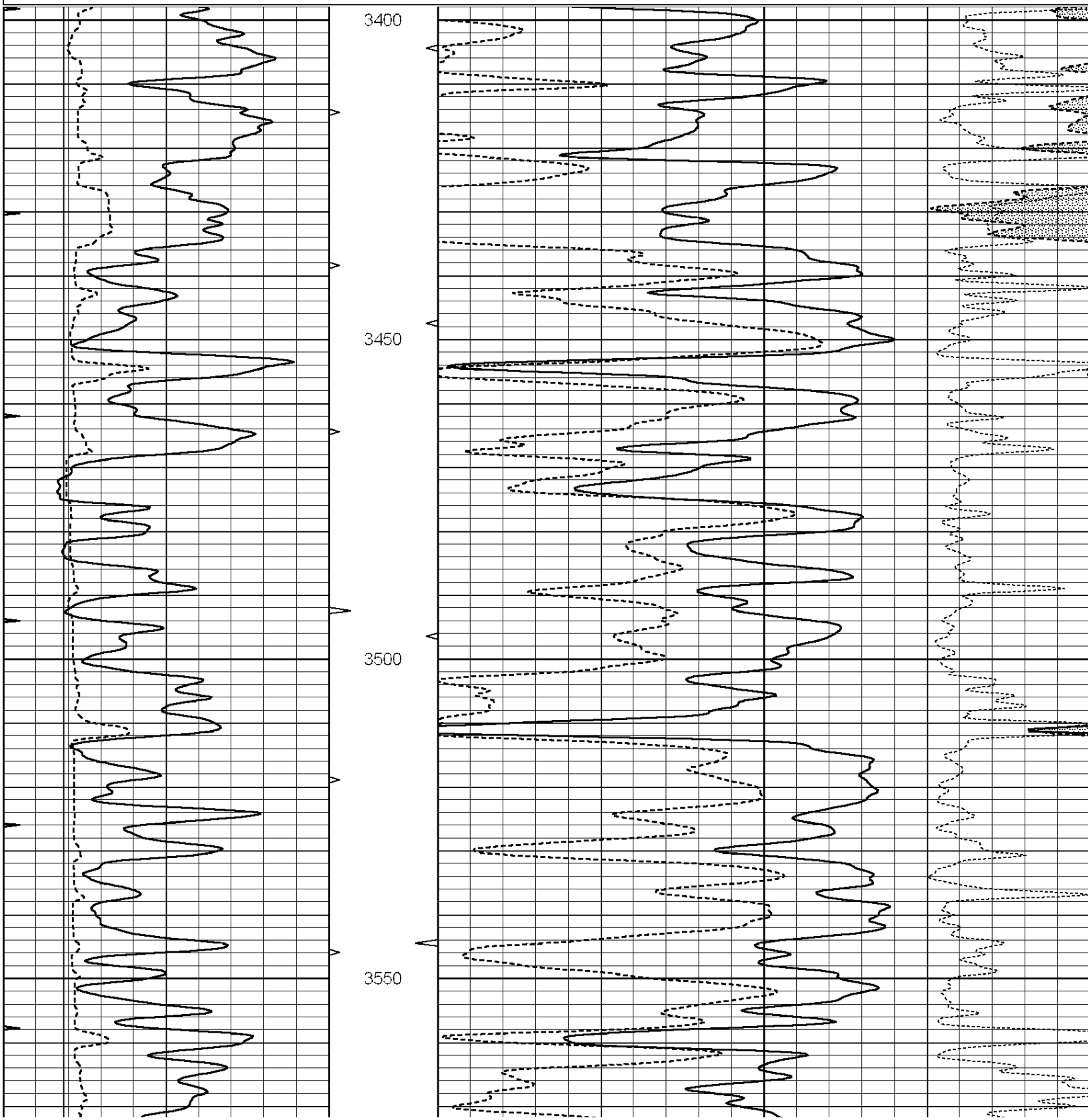


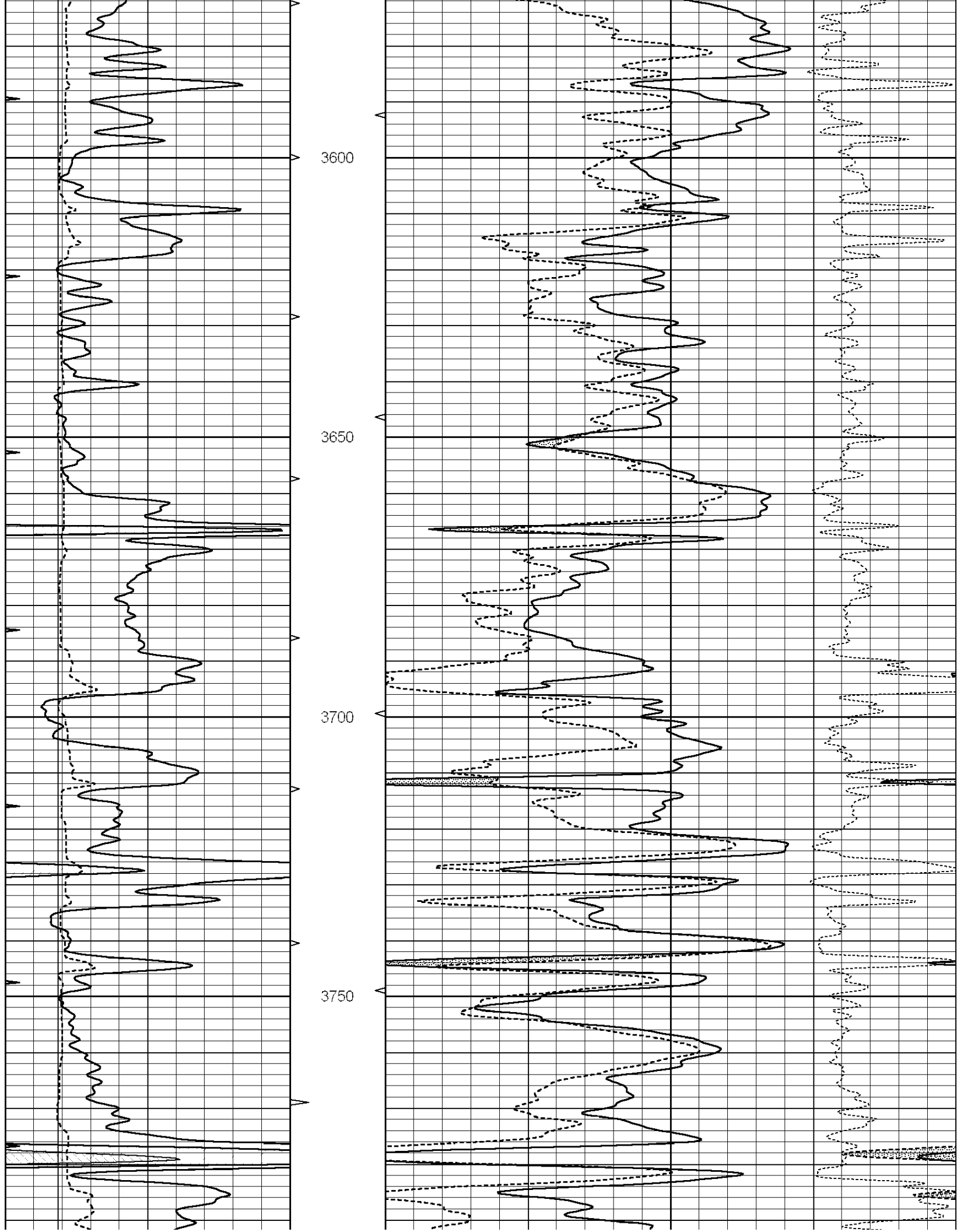
**COMPLETION
& PRODUCTION**

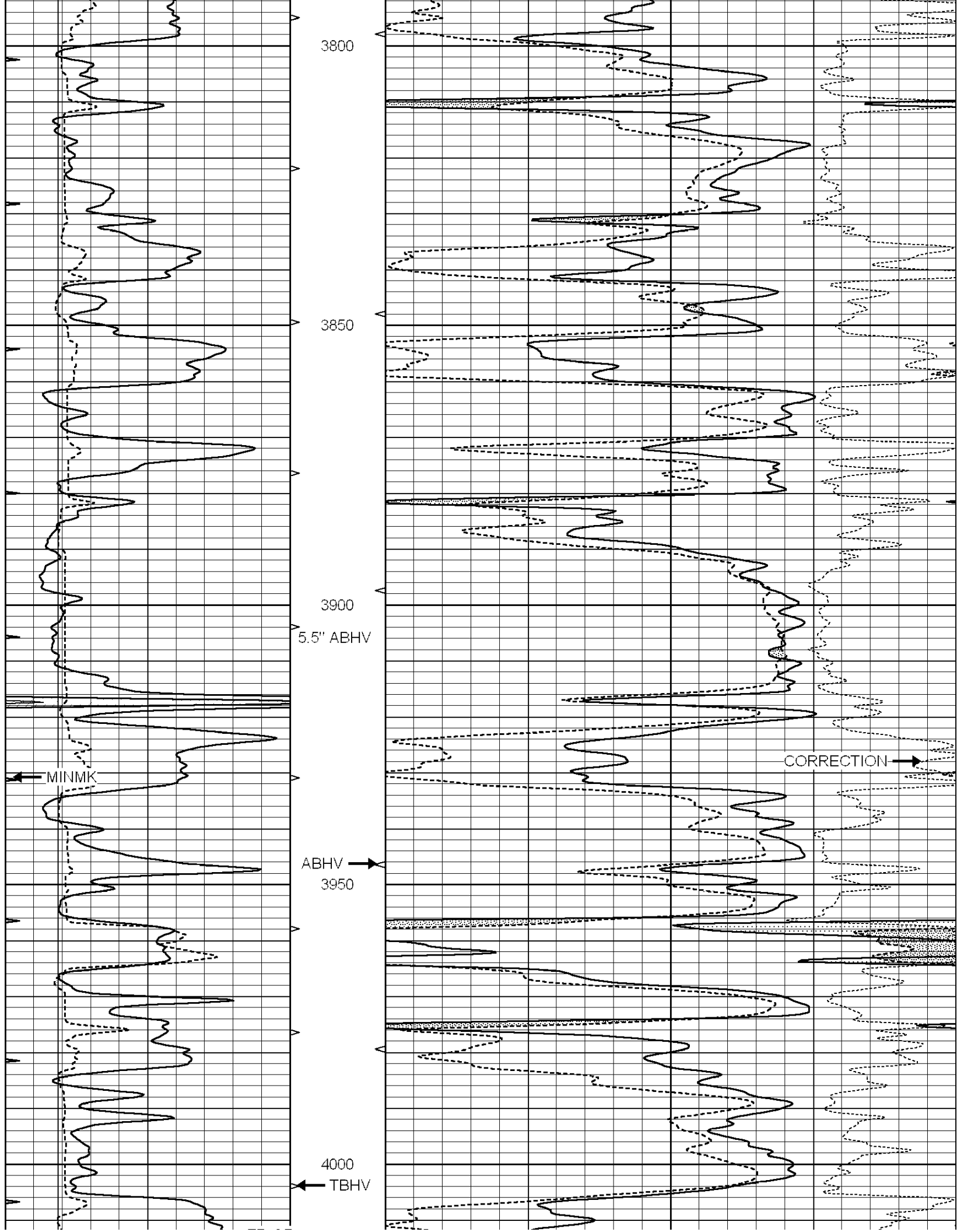
MAIN SECTION

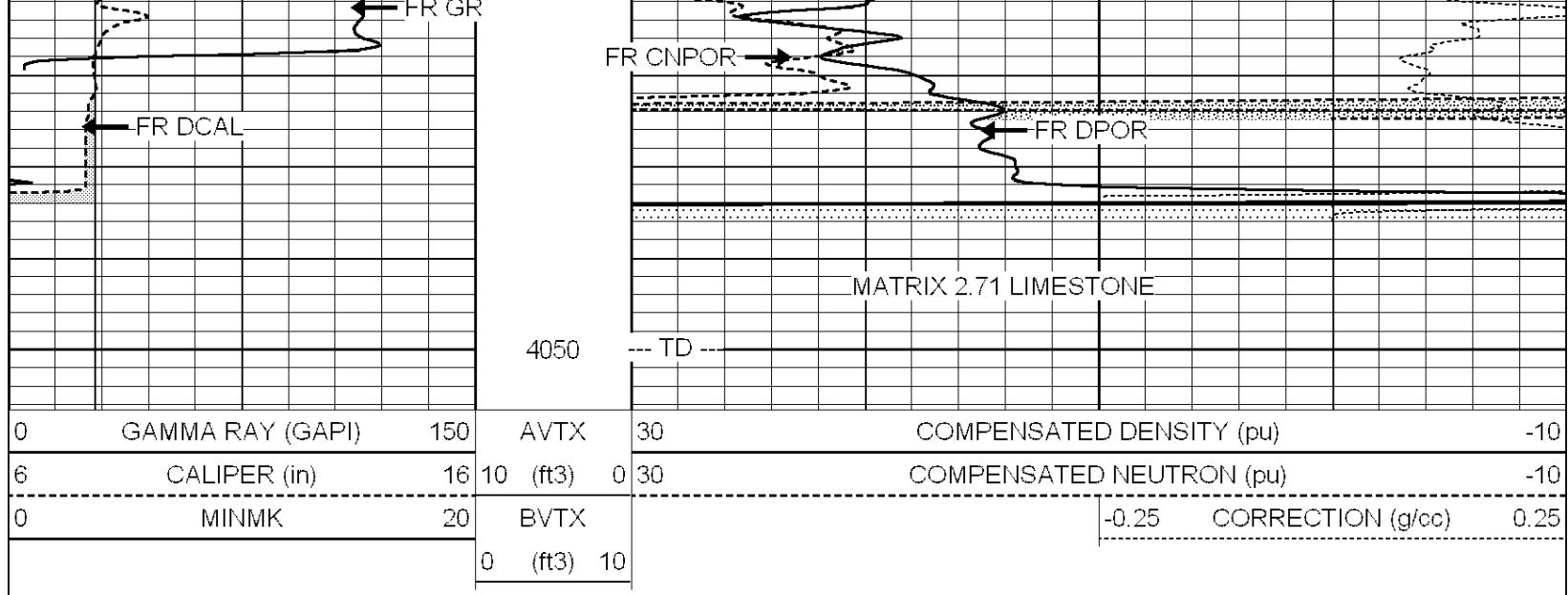
Database File: 26257ddn.db
 Dataset Pathname: pass3.1
 Presentation Format: _den_neu
 Dataset Creation: Thu Nov 13 21:15:01 2014 by Calc Open-Cased 090629
 Charted by: Depth in Feet scaled 1:240

0	GAMMA RAY (GAPI)	150	AVTX	30	COMPENSATED DENSITY (pu)	-10
6	CALIPER (in)	16	10 (ft3)	0 30	COMPENSATED NEUTRON (pu)	-10
0	MINMK	20	BVTX		-0.25 CORRECTION (g/cc)	0.25
			0 (ft3)	10		





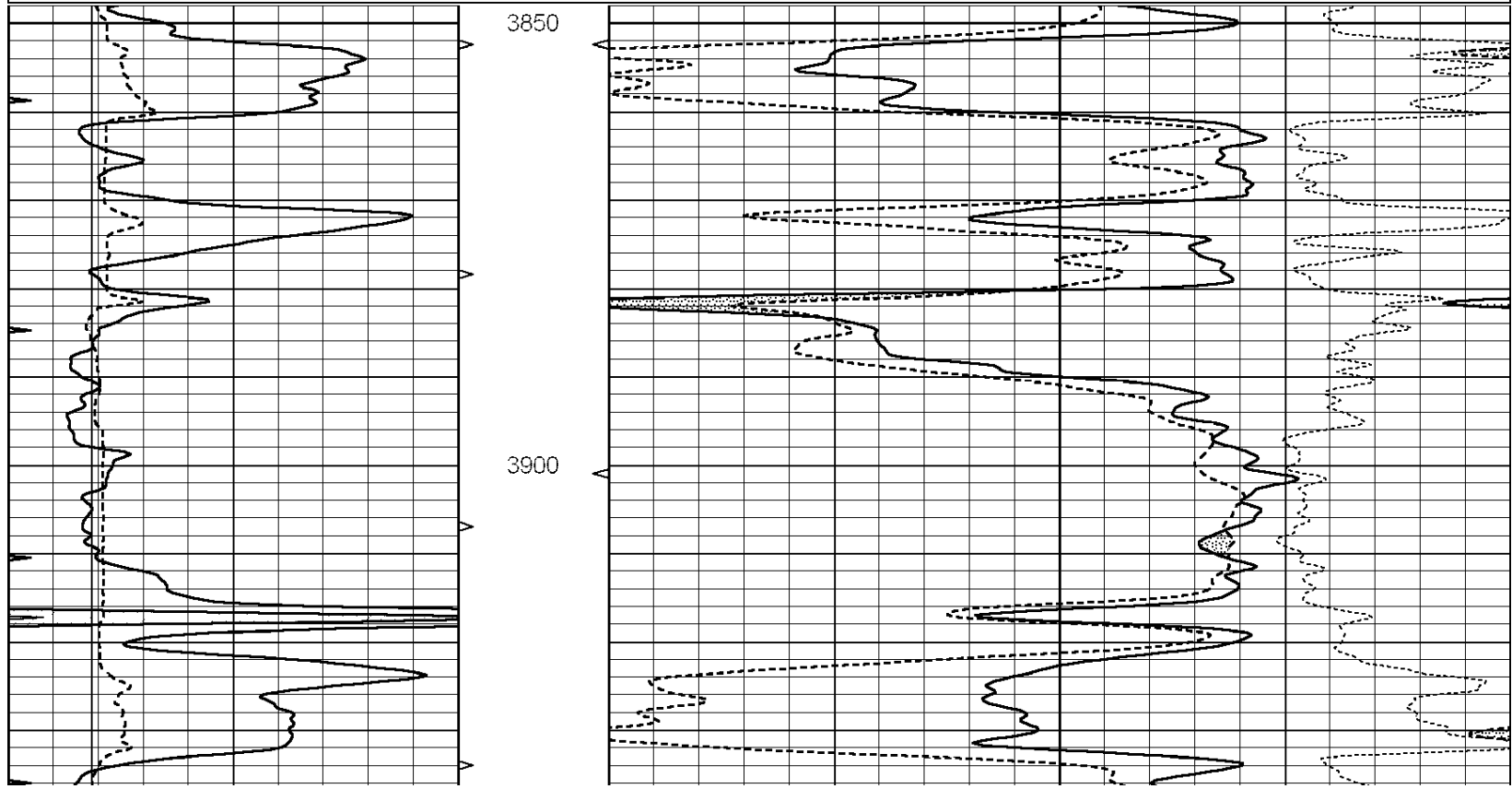


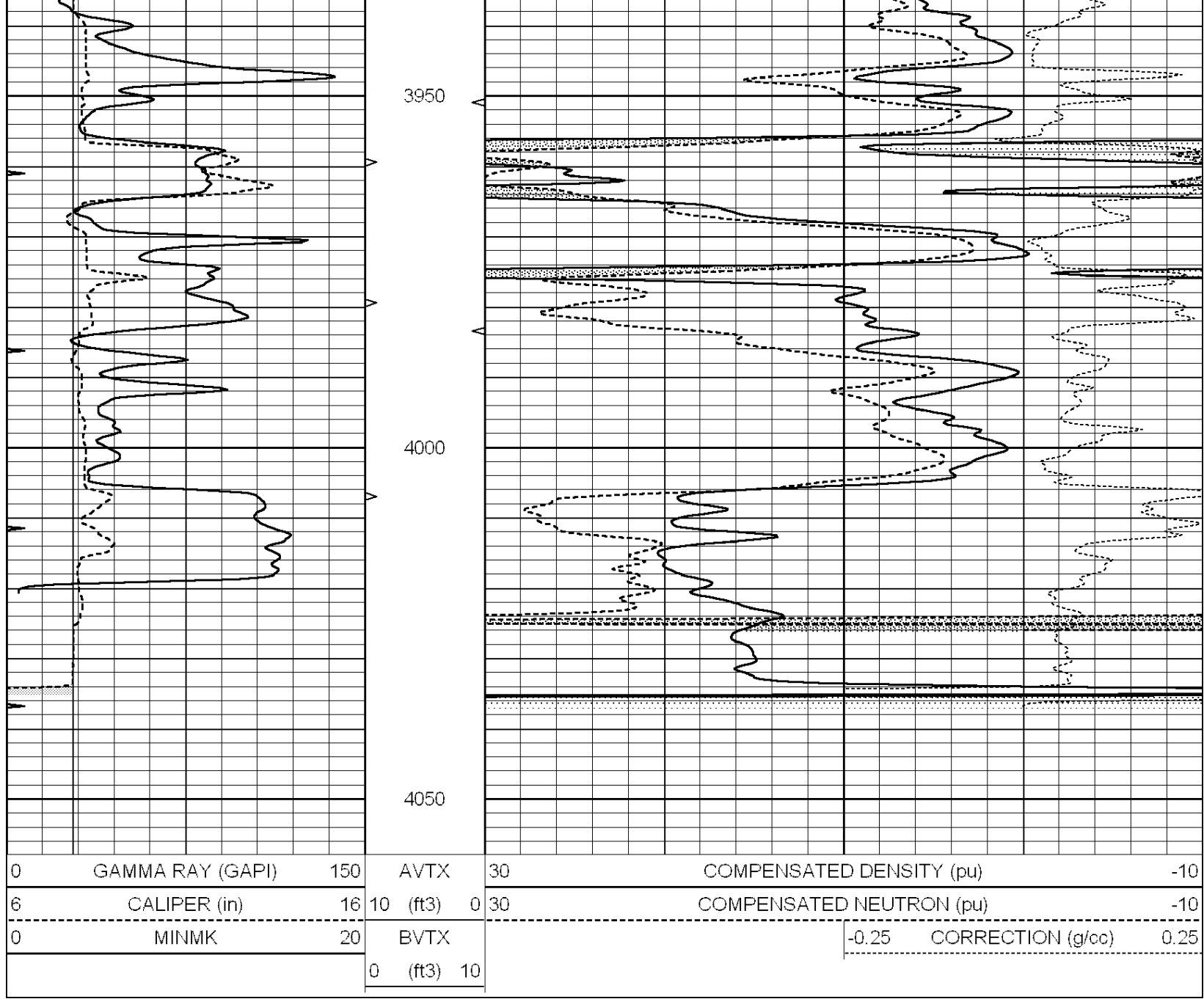


REPEAT SECTION

Database File: 26257ddn.db
 Dataset Pathname: pass2.1
 Presentation Format: _den_neu
 Dataset Creation: Thu Nov 13 20:10:46 2014 by Calc Open-Cased 090629
 Charted by: Depth in Feet scaled 1:240

0	GAMMA RAY (GAPI)	150	AVTX	30	COMPENSATED DENSITY (pu)	-10
6	CALIPER (in)	16	10 (ft3)	0 30	COMPENSATED NEUTRON (pu)	-10
0	MINMK	20	BVTX		-0.25 CORRECTION (g/cc)	0.25
			0 (ft3)	10		





Calibration Report

Database File: 26257ddn.db
 Dataset Pathname: pass3.1
 Dataset Creation: Thu Nov 13 21:15:01 2014 by Calc Open-Cased 090629

Dual Induction Calibration Report

Serial-Model: PROBE7-DILG
 Surface Cal Performed: Thu Nov 13 20:07:11 2014
 Downhole Cal Performed: Sat Jan 19 19:51:38 2013
 After Survey Verification Performed: Sat Jan 19 19:51:38 2013

Surface Calibration

Loop:	Readings			References			Results	
	Air	Loop	V	Air	Loop	mmho/m	m	b
Deep	0.793	0.790	V	0.000	400.000	mmho/m	530.000	12.000
Medium	0.992	1.002	V	0.000	464.000	mmho/m	570.000	-30.000
Internal:	Zero	Cal		Zero	Cal		m	b
Deep	0.041	0.042	V	0.000	400.000	mmho/m	664.874	27.014

Deep	0.041	0.042	V	0.000	400.000	mmho/m	604.936	-21.011
Medium	0.035	0.802	V	0.000	464.000	mmho/m	604.936	-21.367

Downhole Calibration

	Readings			References			Results	
	Zero	Cal		Zero	Cal		m'	b'
Deep	135384.000	27094.500	mmho/m	135400.000	27082.400	mmho/m	1.000	-19.259
Medium	-47330.100	-9381.740	mmho/m	-47327.100	-9389.280	mmho/m	1.000	-10.154
LL3		7.322	V		1400.000	Ohm-m		
		0.038	V		20.000	Ohm-m		
		-7.273	V		4000.000	mmho-m		

After Survey Verification

	Readings			Targets			Results	
	Zero	Cal		Zero	Cal		m'	b'
Deep	0.000	0.000	mmho/m	135384.000	27094.500	mmho/m	1.000	0.000
Medium	0.000	0.000	mmho/m	-47330.100	-9381.740	mmho/m	1.000	0.000
LL3		0.000	Ohm-m		1400.000	Ohm-m		
		0.000	Ohm-m		20.000	Ohm-m		
		0.000	mmho-m		4000.000	mmho-m		

Compensated Density Calibration Report

Serial-Model:	GEAR5-GEARHART
Source / Verifier:	147 / 147
Master Calibration Performed:	Thu Nov 13 20:08:50 2014

Master Calibration

	Density		Far Detector		Near Detector	
Magnesium	1.710	g/cc	943.83	576.01	cps	
Aluminum	2.580	g/cc	212.01	399.19	cps	
Spine Angle = 76.20			Density/Spine Ratio = 0.566			
	Size		Reading			
Small Ring	8.20	in	1.64	V		
Large Ring	14.00	in	2.93	V		

Compensated Neutron Calibration Report

Serial Number:	080620
Tool Model:	Probe

PRE-SURVEY VERIFICATION

Detector	Readings	Measured	Target
Short Space	cps		
Long Space	cps	pu	pu

POST-SURVEY VERIFICATION

Detector	Readings	Measured	Target
Short Space	cps		
Long Space	cps	pu	pu

Gamma Ray Calibration Report

Serial Number:	46001
Tool Model:	Probe1
Performed:	Thu Nov 13 18:06:24 2014

Calibrator Value:	1.0	GAPI
Background Reading:	0.0	cps
Calibrator Reading:	1.0	cps
Sensitivity:	0.2600	GAPI/cps