



**COMPLETION
& PRODUCTION
SERVICES CO.**

**SONIC
LOG**

Company RED OAK ENERGY, INC.
Well BROWN #9-1
Field WILDCAT
County GRAHAM State KANSAS

Company RED OAK ENERGY, INC.
Well BROWN #9-1
Field WILDCAT
County GRAHAM
State KANSAS

Location: API #: 15-065-24068
SEC 9 TWP 7S RGE 24W
2125' FSL & 420' FWL
Permanent Datum GROUND LEVEL Elevation 2518
Log Measured From KELLY BUSHING 5' A.G.L.
Drilling Measured From KELLY BUSHING
Other Services
CDL/CNL
DIL
Elevation
K.B. 2523
D.F.
G.L. 2518

Date	11-13-14
Run Number	TWVO
Depth Driller	4050
Depth Logger	4050
Bottom Logged Interval	4042
Top Log Interval	290
Casing Driller	303
Casing Logger	306
Bit Size	7.875
Type Fluid in Hole	CHEMICAL MUD
Density / Viscosity	8.9 / 50
pH / Fluid Loss	10.3 / 6.4
Source of Sample	FLOWLINE
Rim @ Meas. Temp	1.20 @ 70F
Rmf @ Meas. Temp	0.90 @ 70F
Rmc @ Meas. Temp	1.44 @ 70F
Source of Rmf / Rmc	MEASURED
Rim @ BHT	.730 @ 115F
Time Circulation Stopped	2 HOURS
Time Logger on Bottom	7:30 P.M.
Maximum Recorded Temperature	115F
Equipment Number	3802
Location	HAYS, KS.
Recorded By	RUPP
Witnessed By	SEAN DEENIHAN

<<< Fold Here >>>

All interpretations are opinions based on inferences from electrical or other measurements and we cannot and do not guarantee the accuracy or correctness of any interpretation, and we shall not, except in the case of gross or willful negligence on our part, be liable or responsible for any loss, costs, damages, or expenses incurred or sustained by anyone resulting from any interpretation made by any of our officers, agents or employees. These interpretations are also subject to our general terms and conditions set out in our current Price Schedule.

Comments

NABORS COMPLETION & PRODUCTION SERVICES
785-628-6395
THANK YOU FOR YOUR BUSINESS
DIRECTIONS: HILL CITY, 9W TO RD. #170, 6N TO RD.W, 3/4E, N INTO.

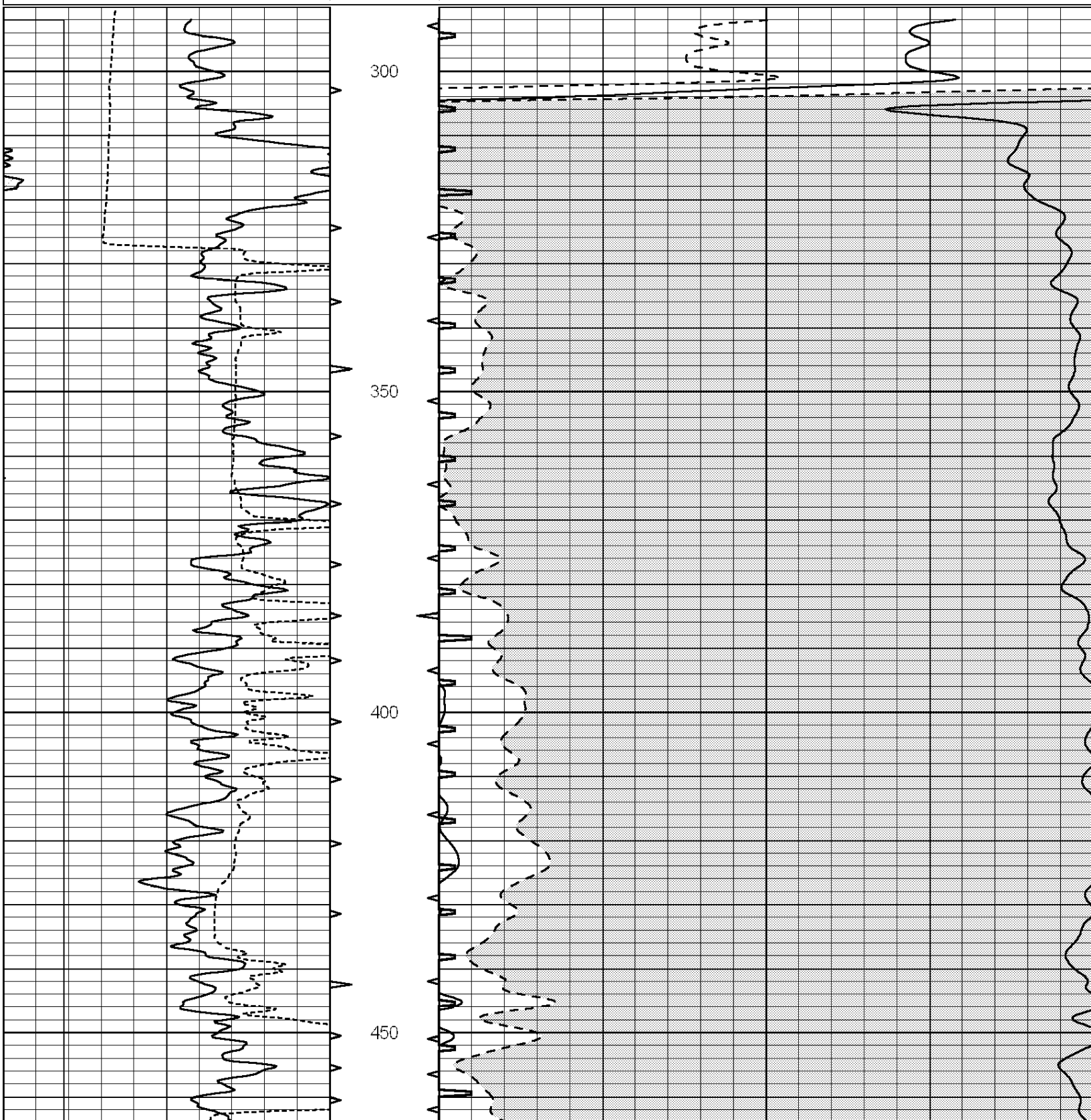


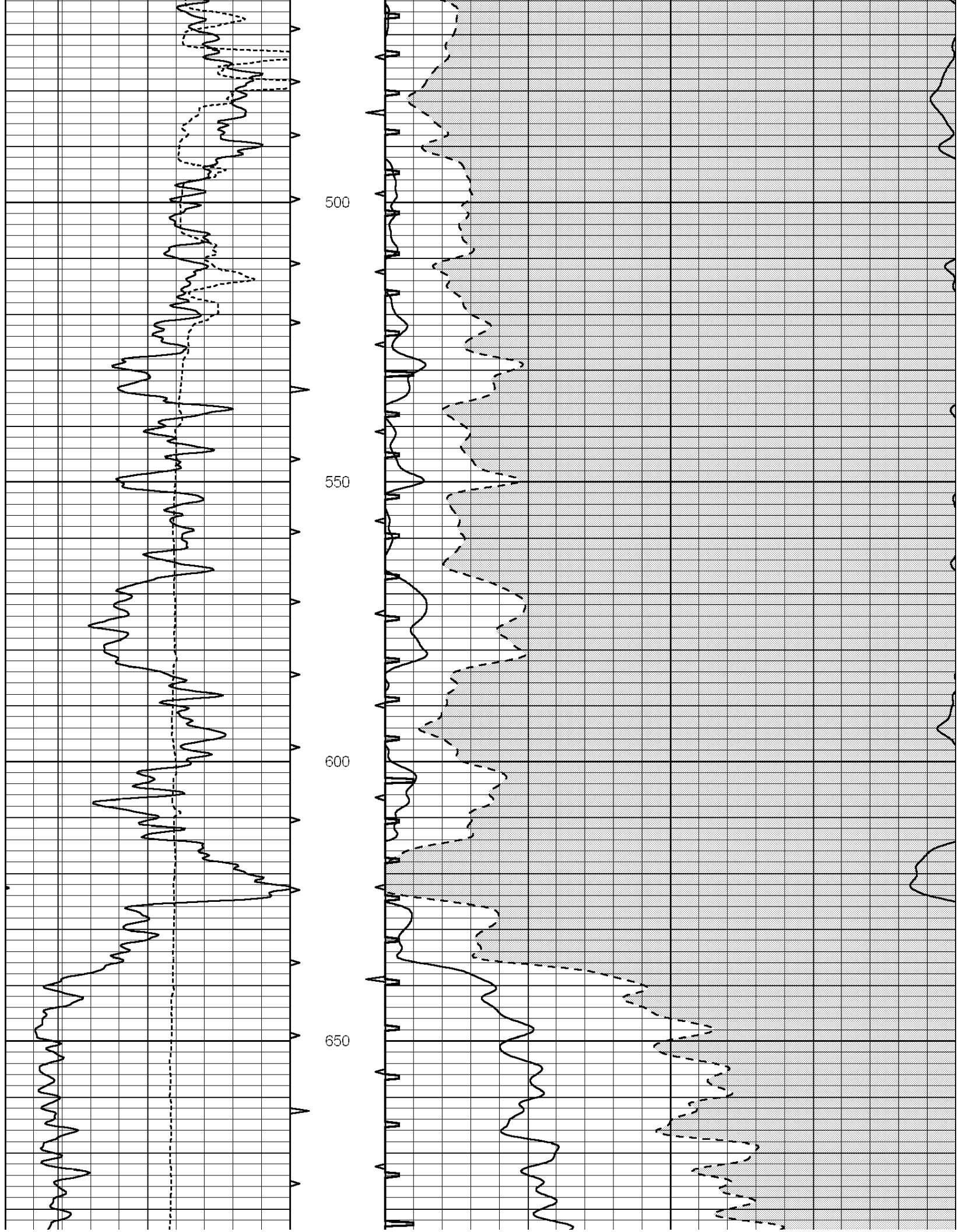
**COMPLETION
& PRODUCTION**

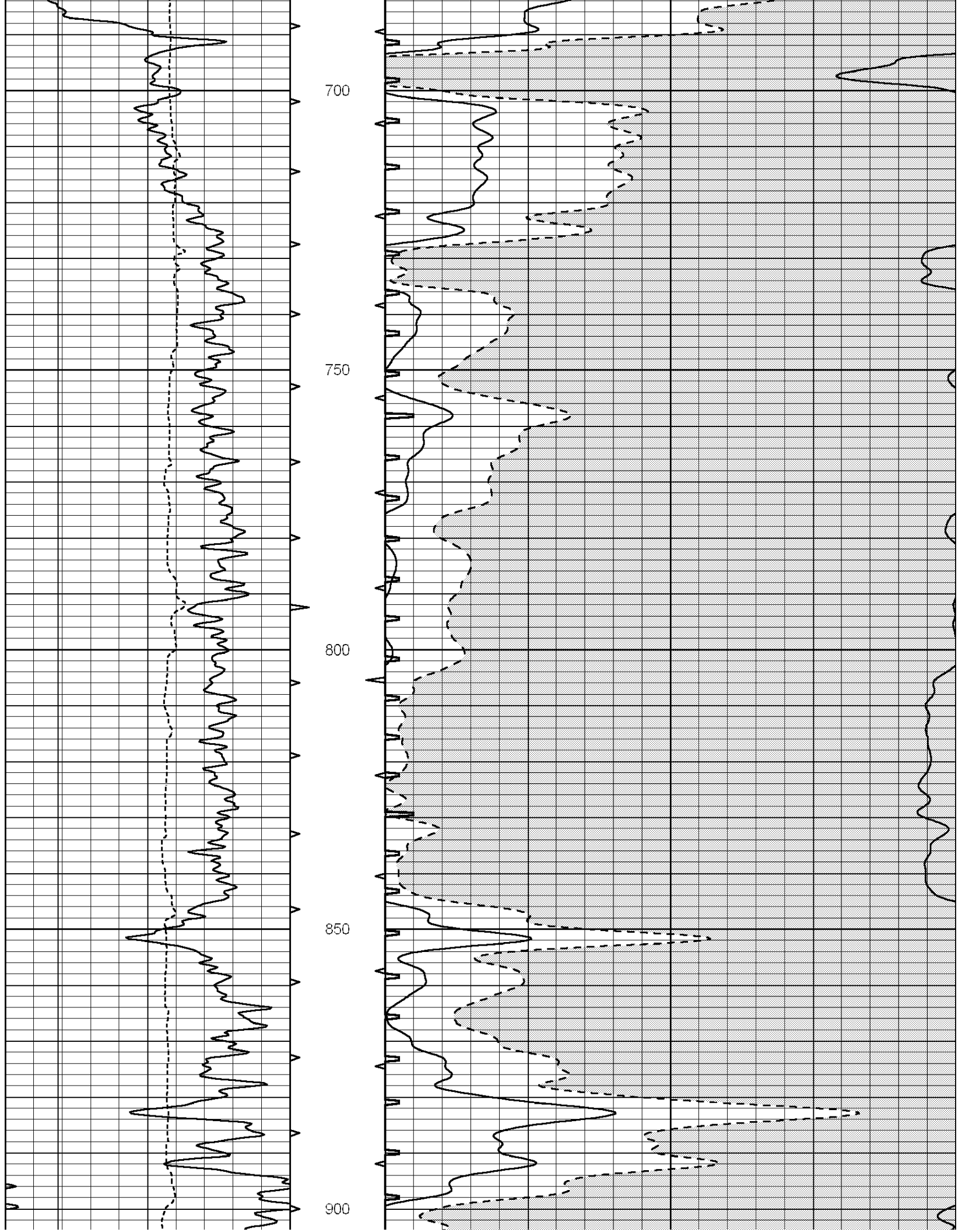
MAIN SECTION

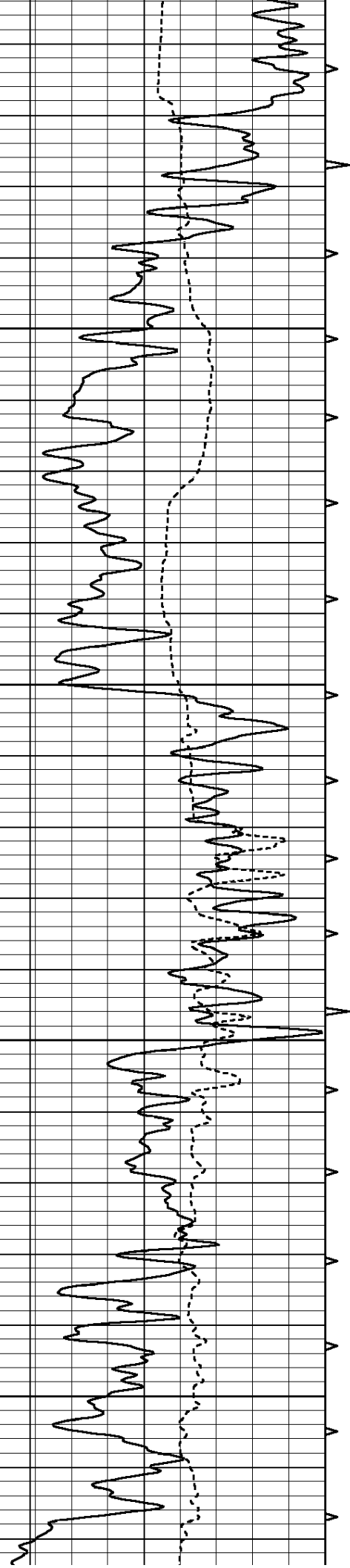
Database File: 26257ddn.db
 Dataset Pathname: pass6A
 Presentation Format: slt
 Dataset Creation: Fri Nov 14 03:50:11 2014
 Charted by: Depth in Feet scaled 1:240

0	GAMMA RAY (GAPI)	150	ABHV	140	DELTA TIME (usec/ft)	40
6	CALIPER (in)	16	10 (ft3) 0	30	SONIC POROSITY (pu)	-10
6	CALIPER (in)	16	TBHV	0	ITT (msec)	20
			0 (ft3) 10			







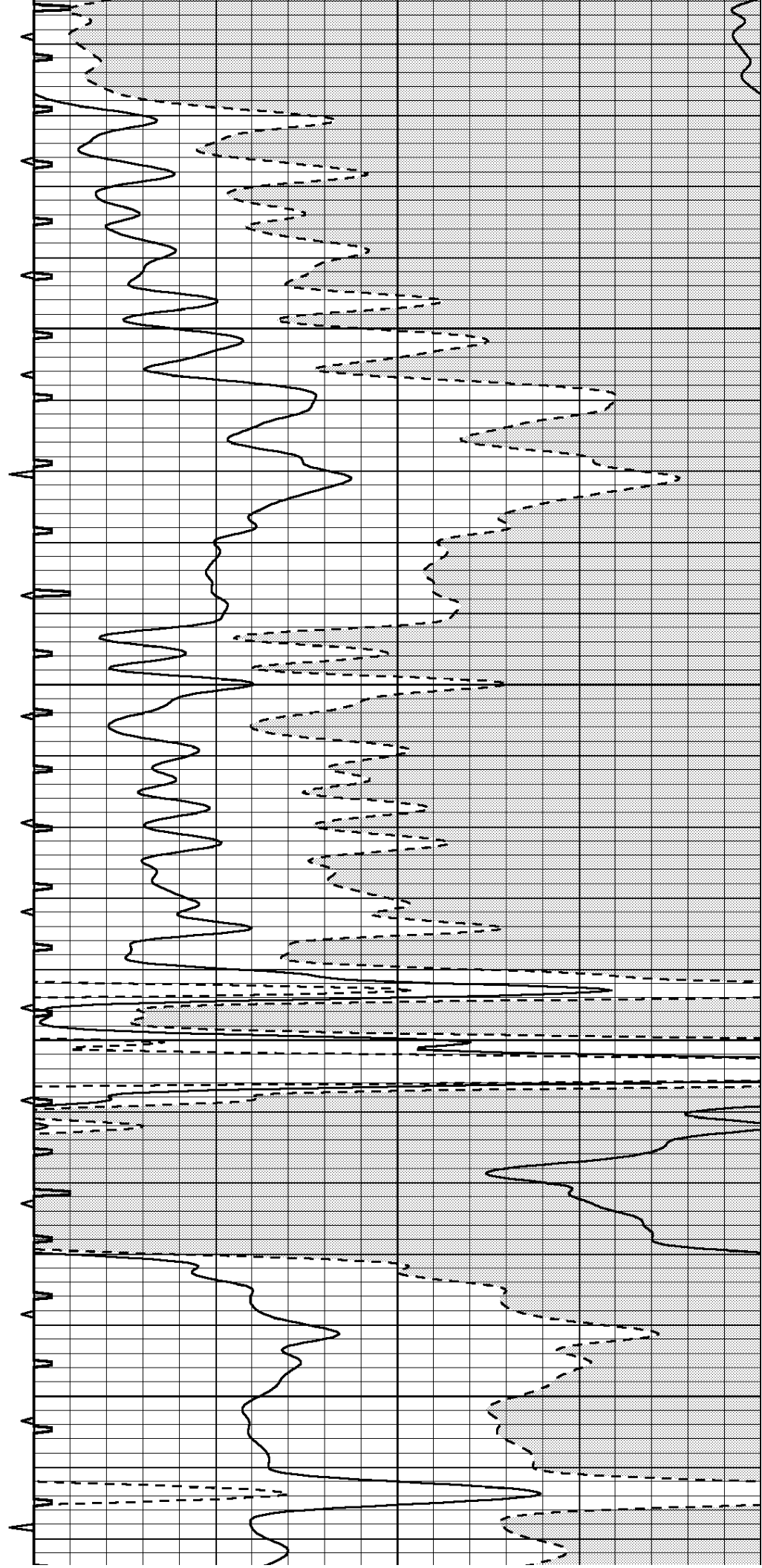


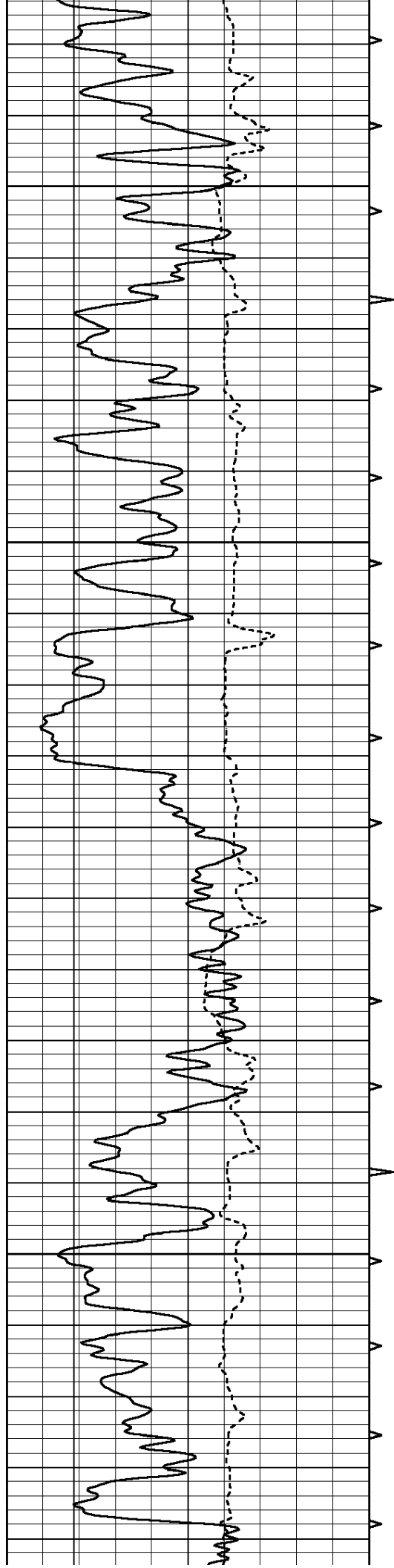
950

1000

1050

1100



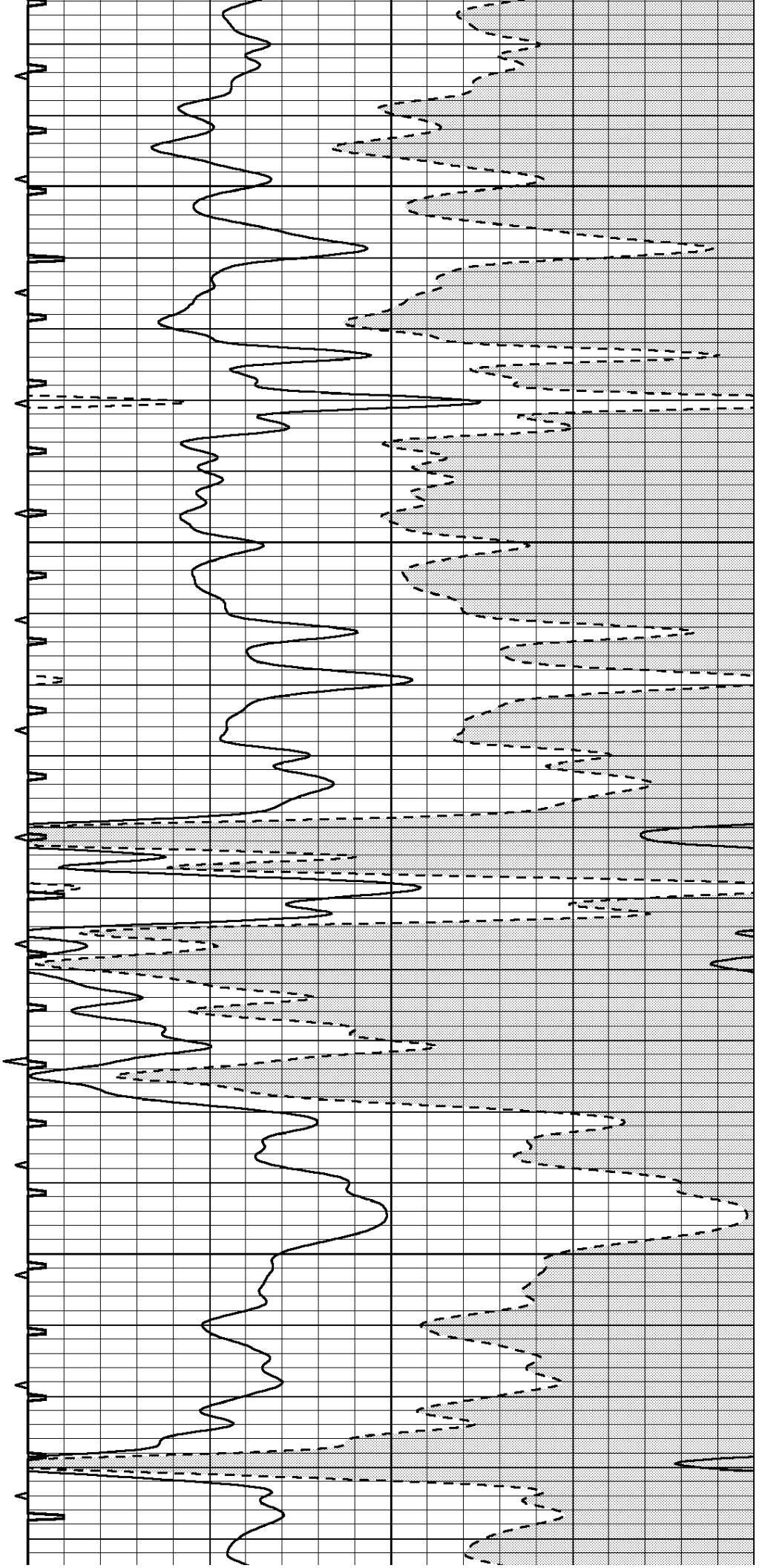


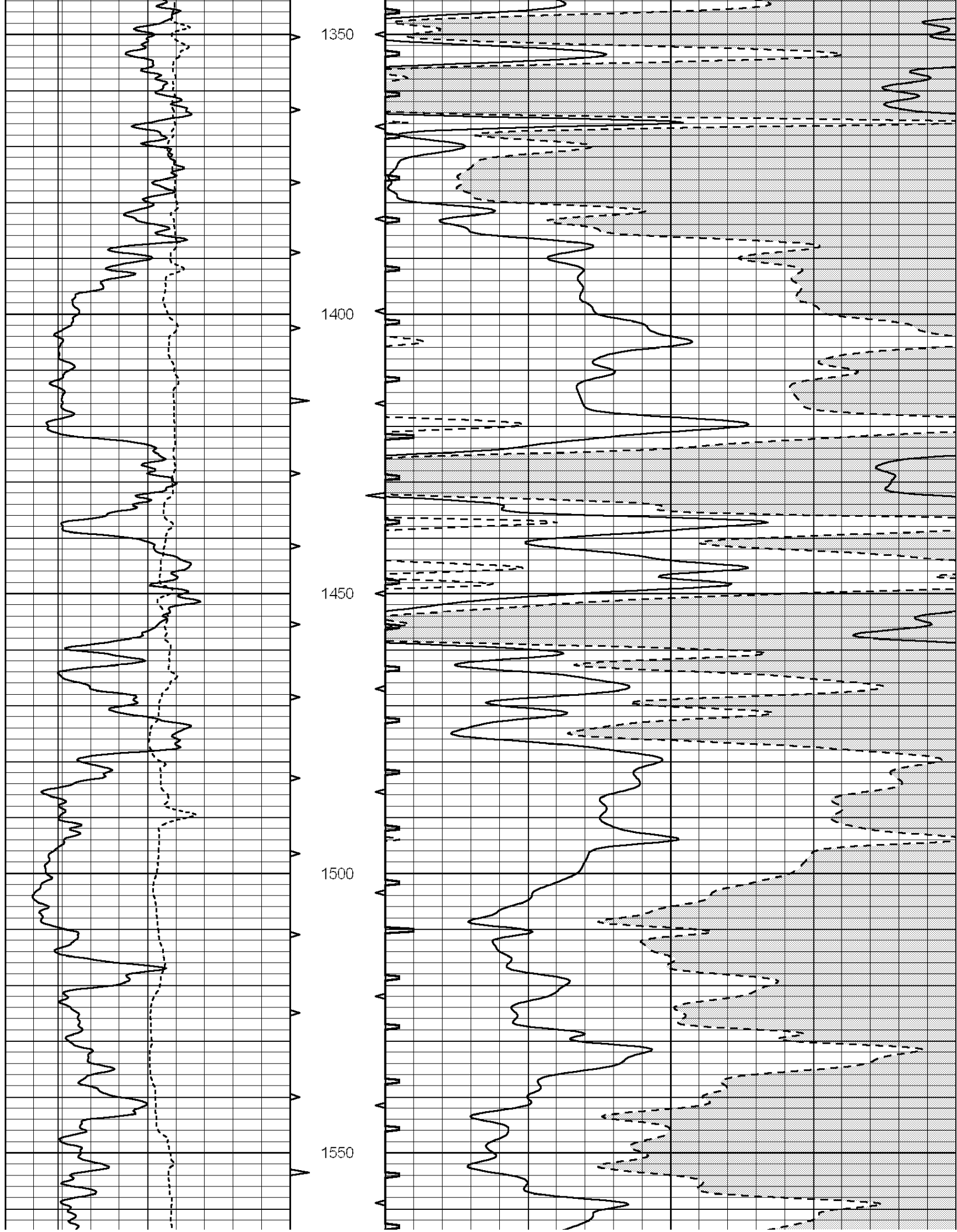
1150

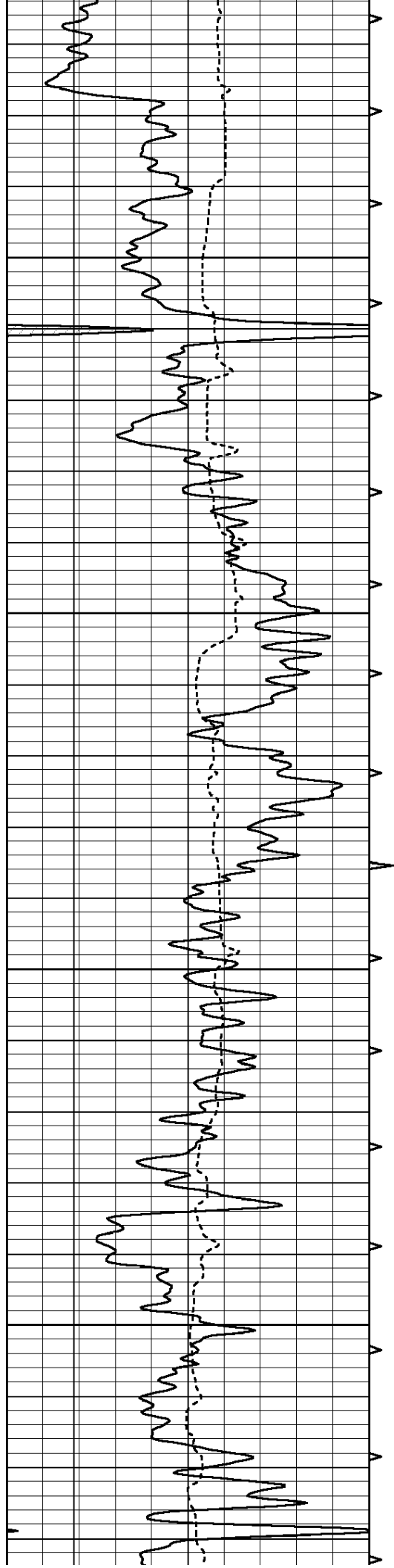
1200

1250

1300





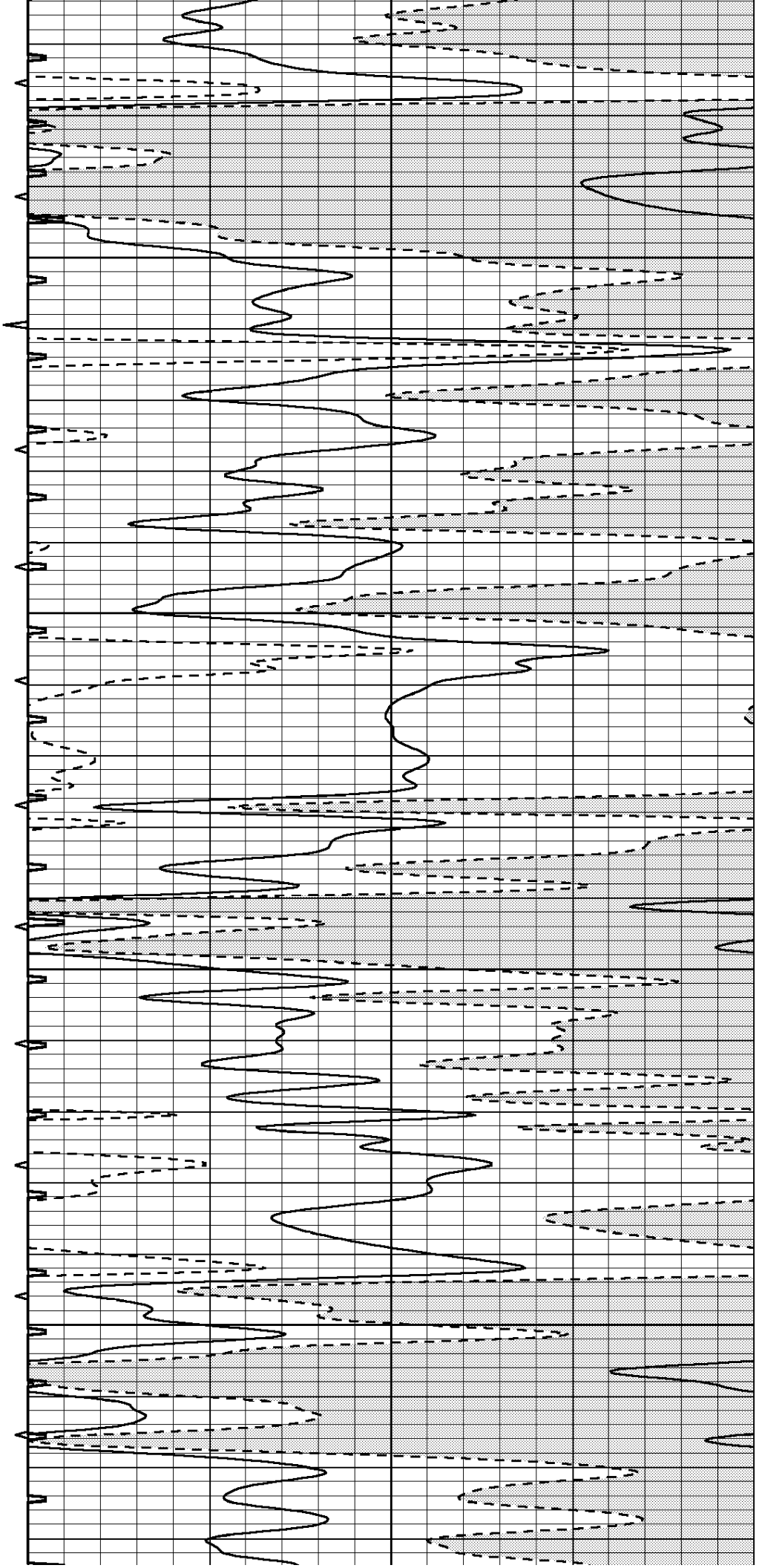


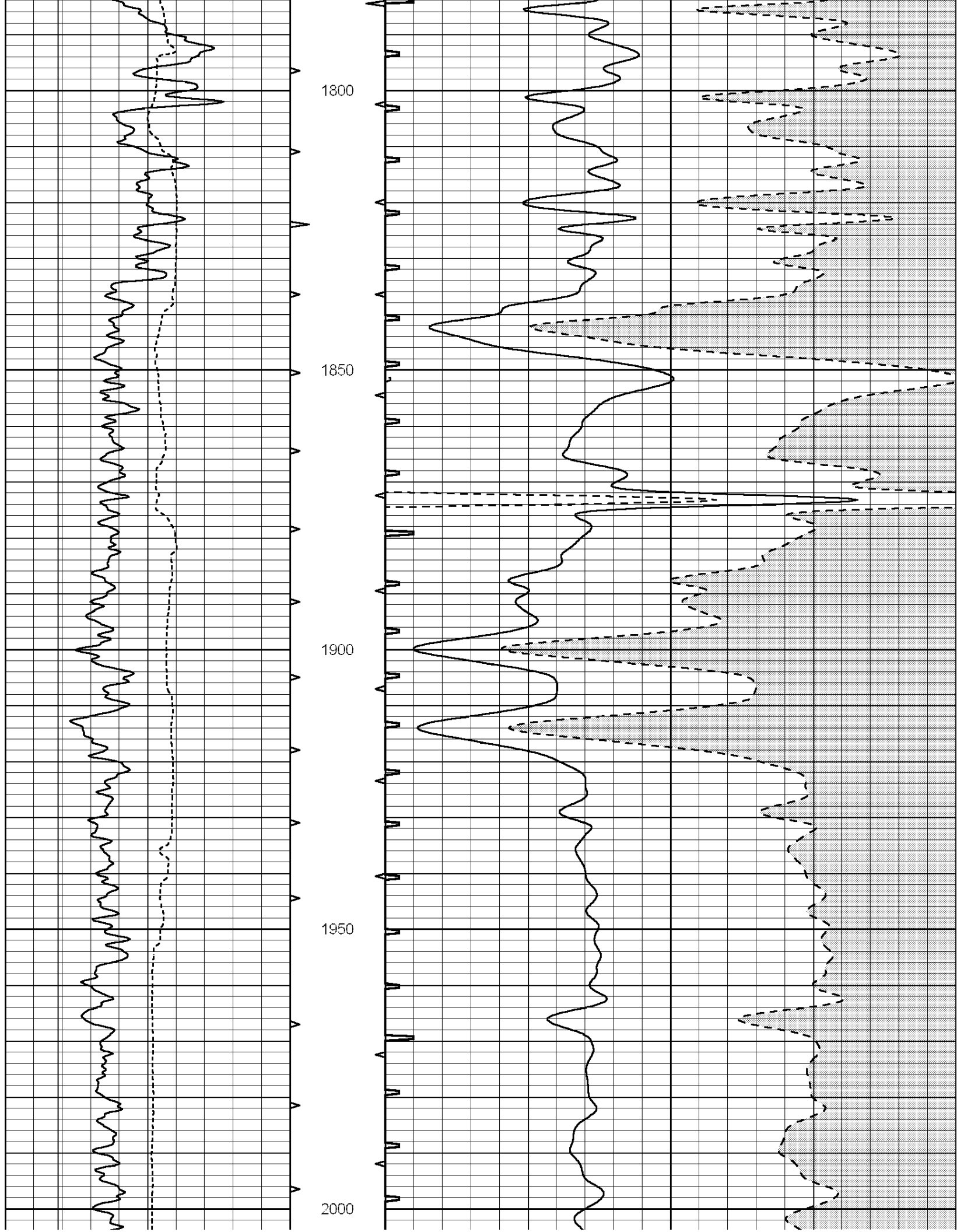
1600

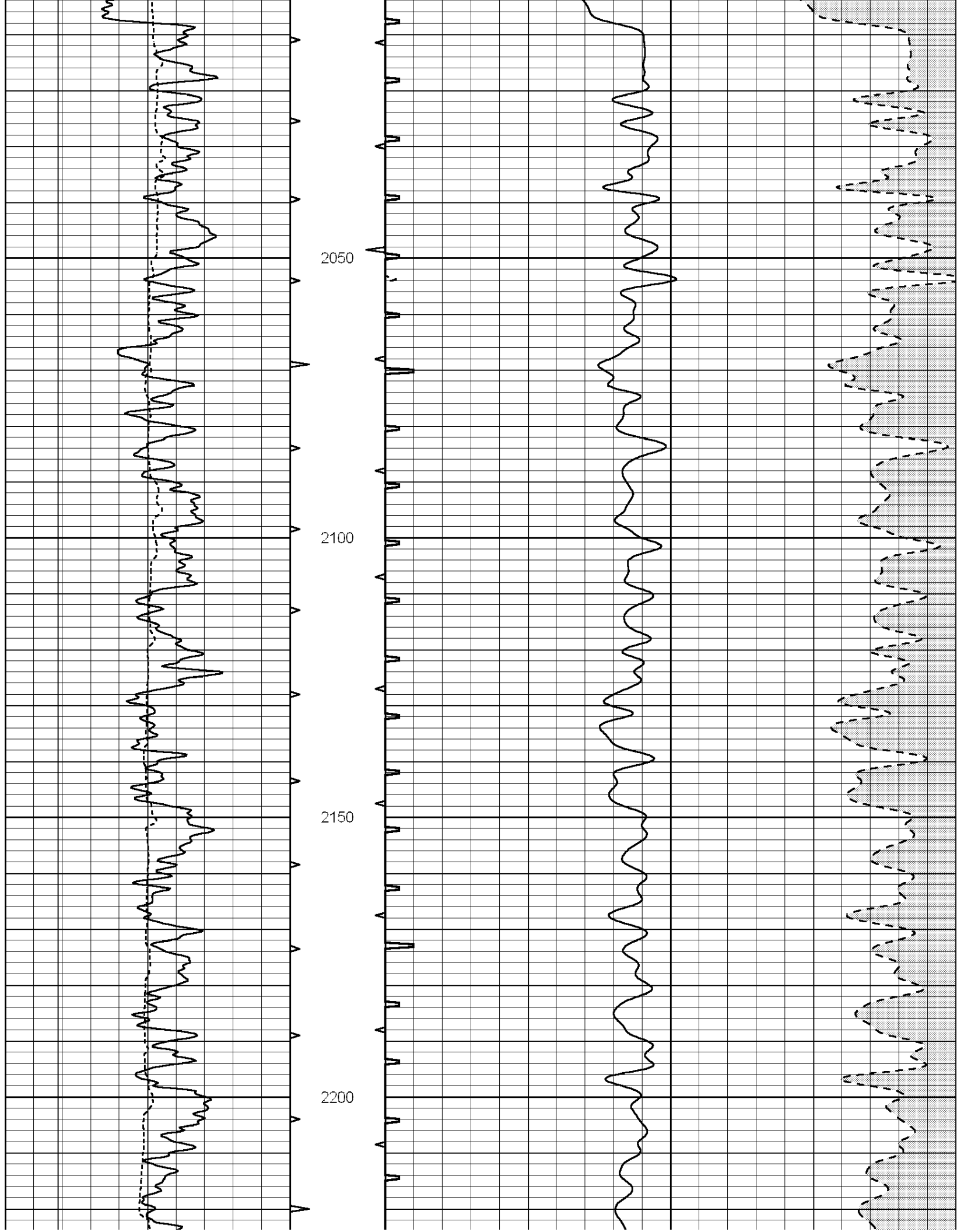
1650

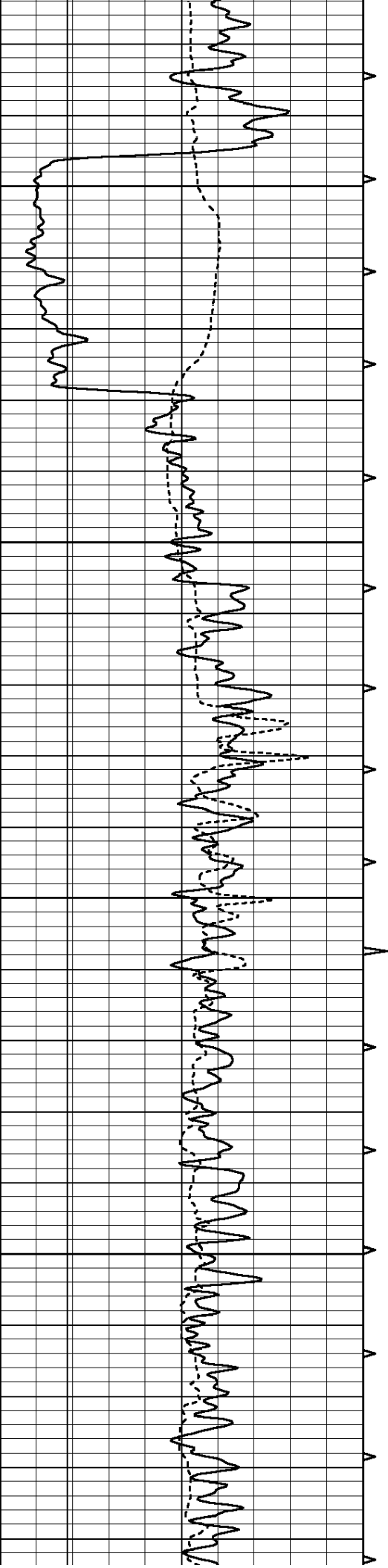
1700

1750







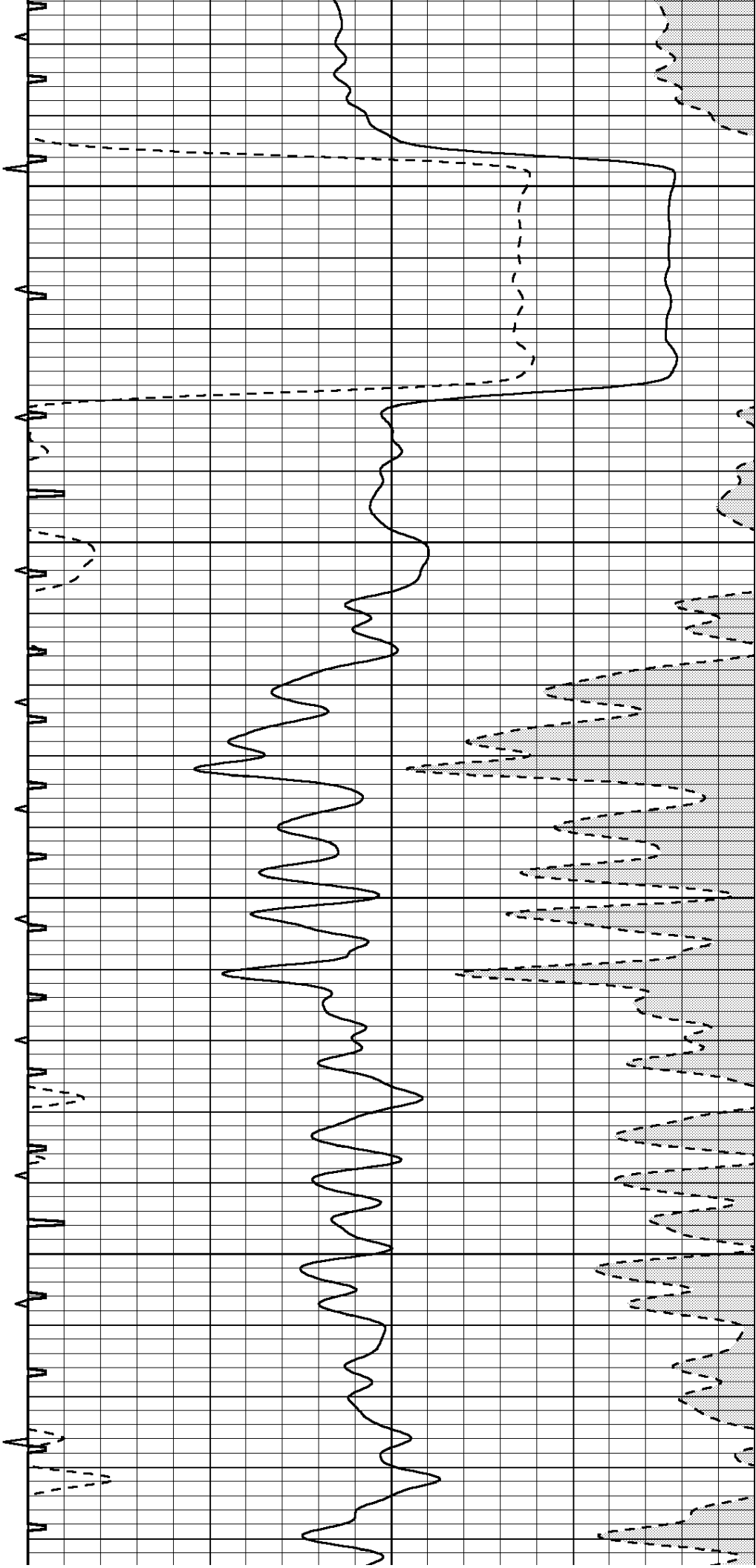


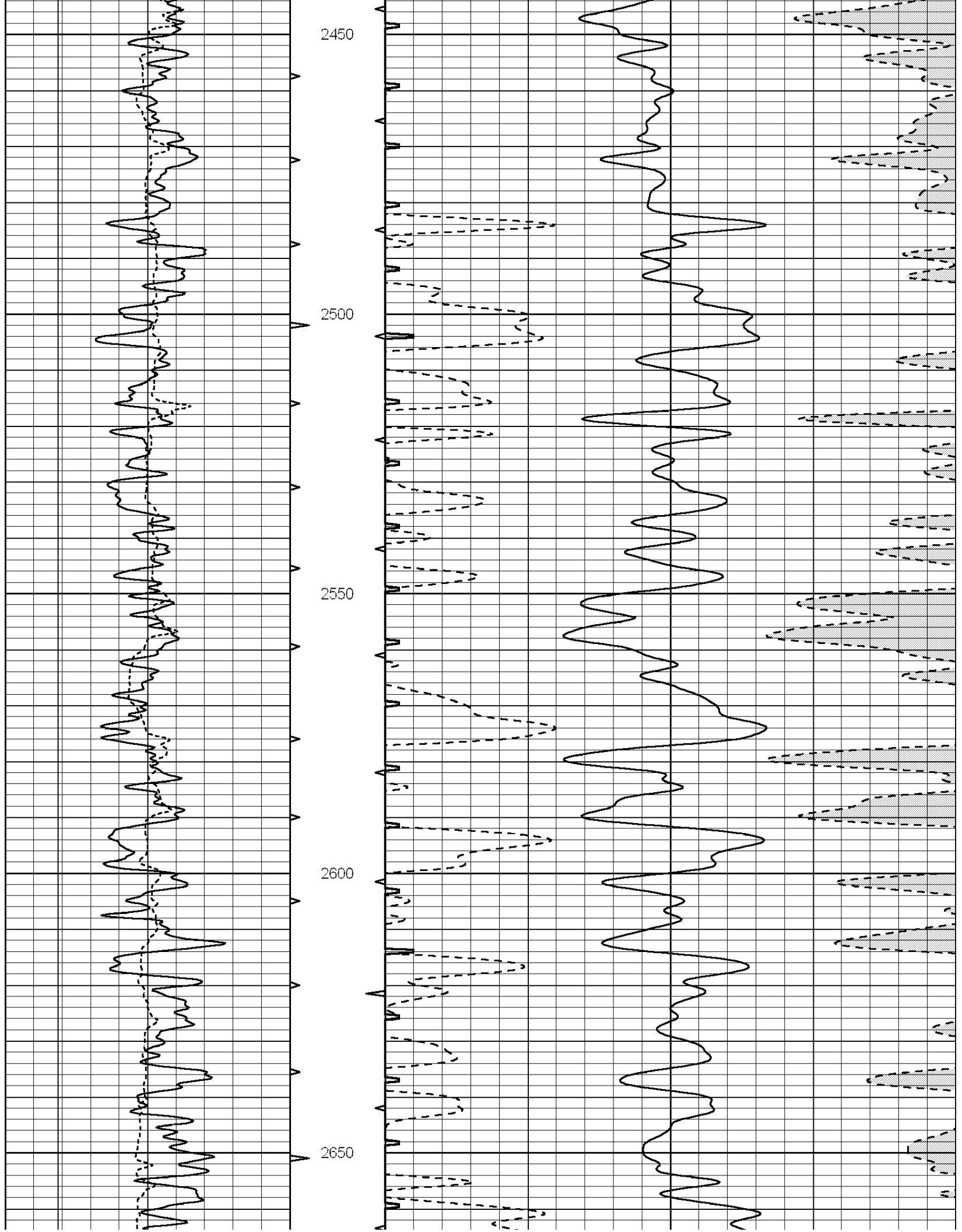
2250

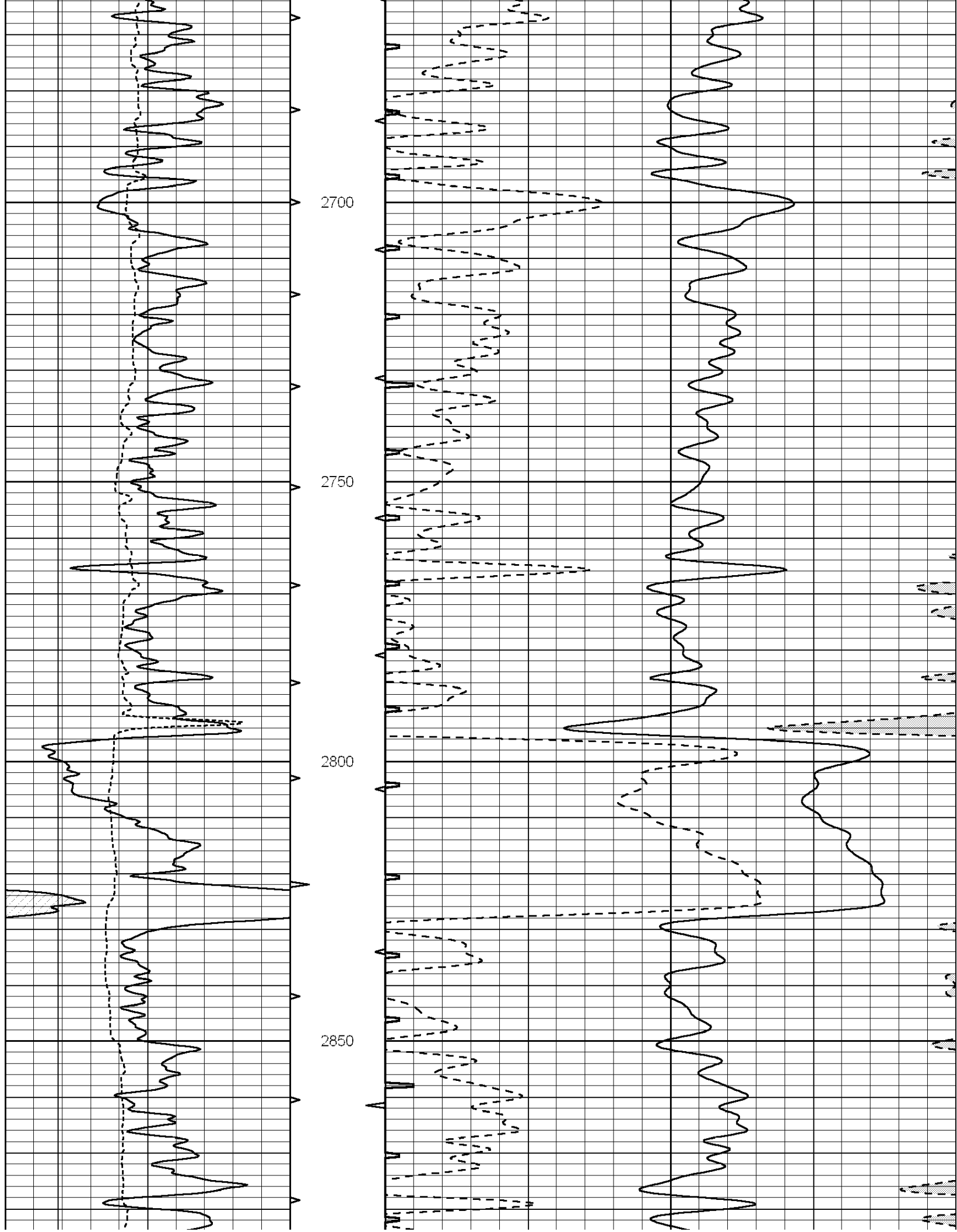
2300

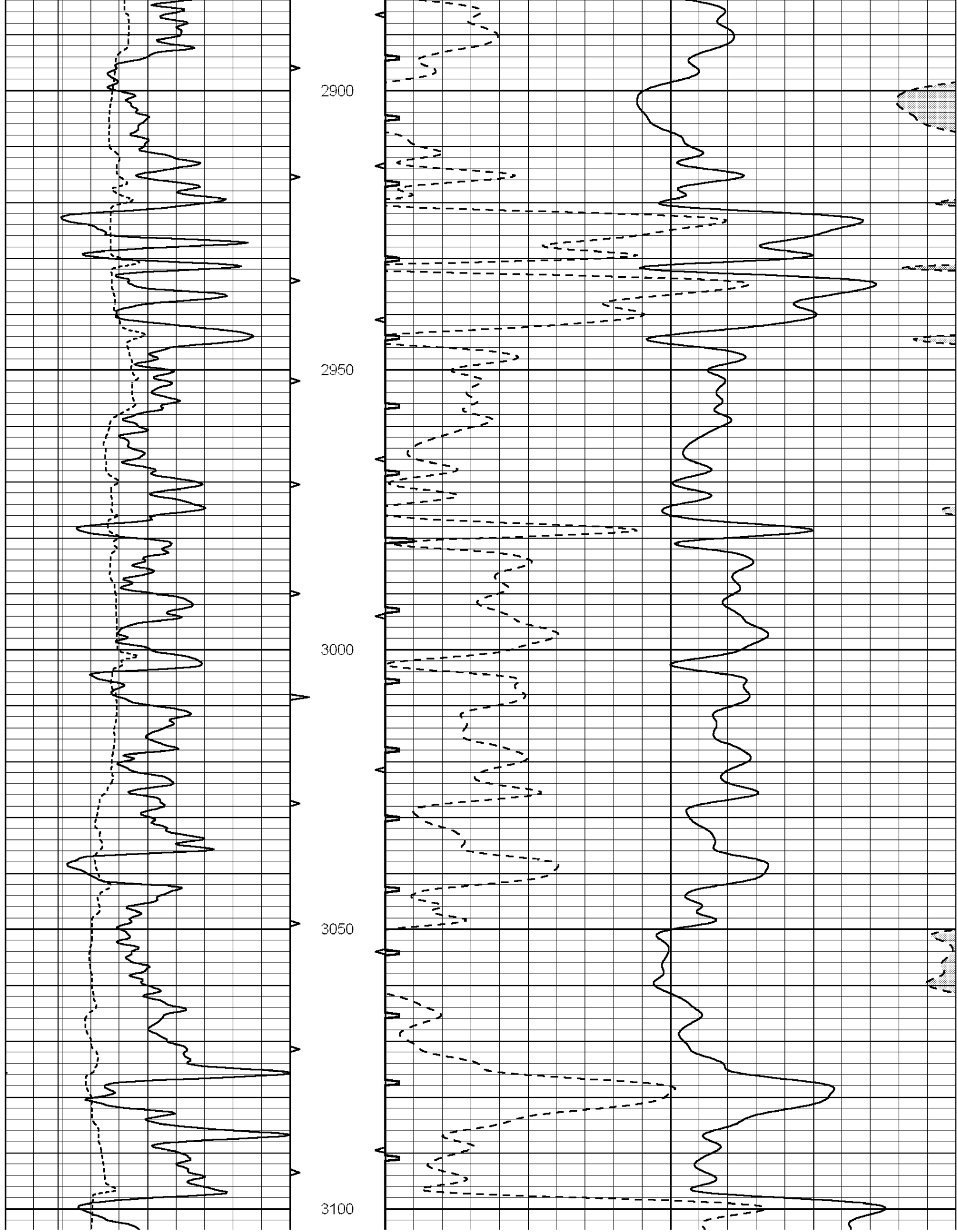
2350

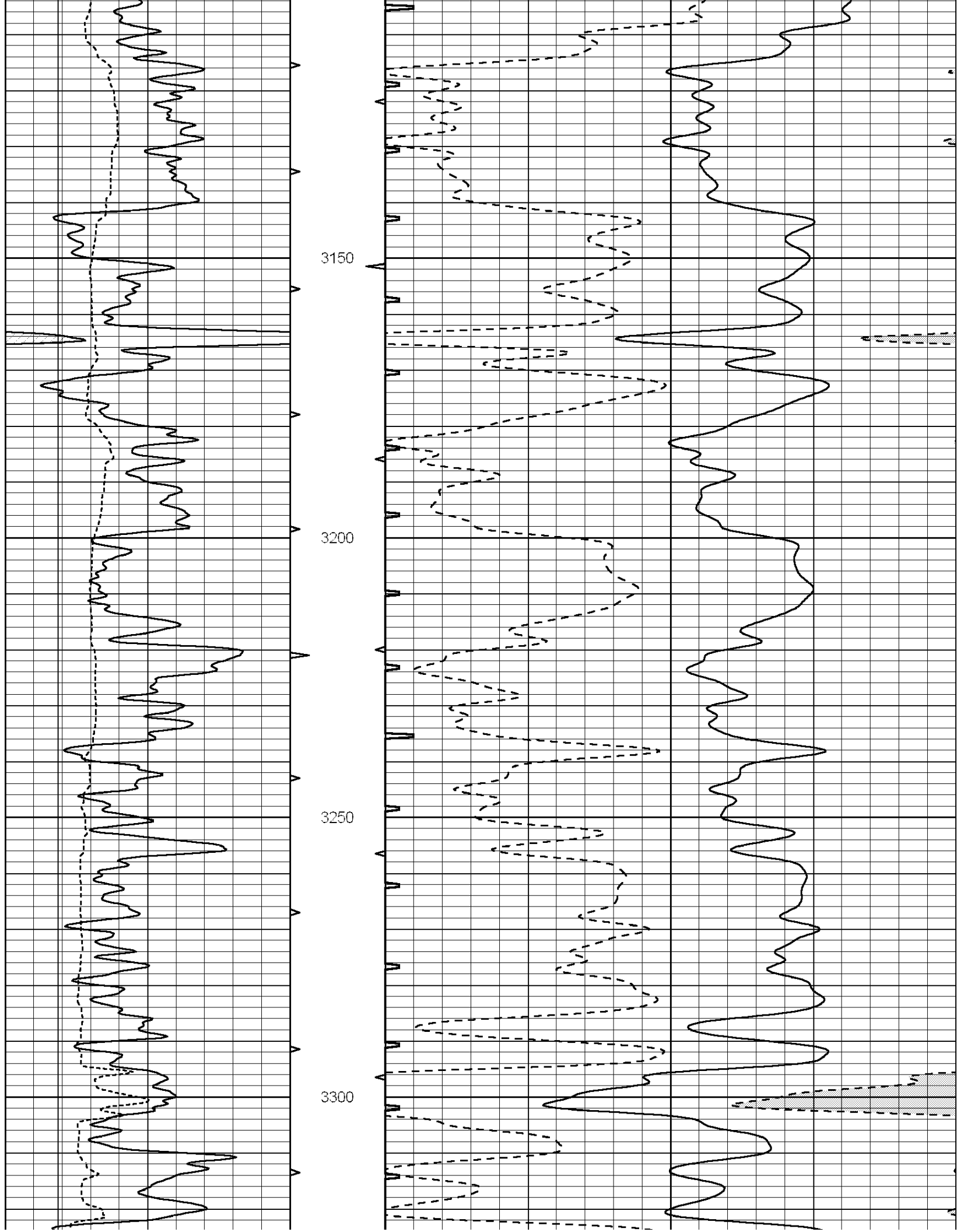
2400

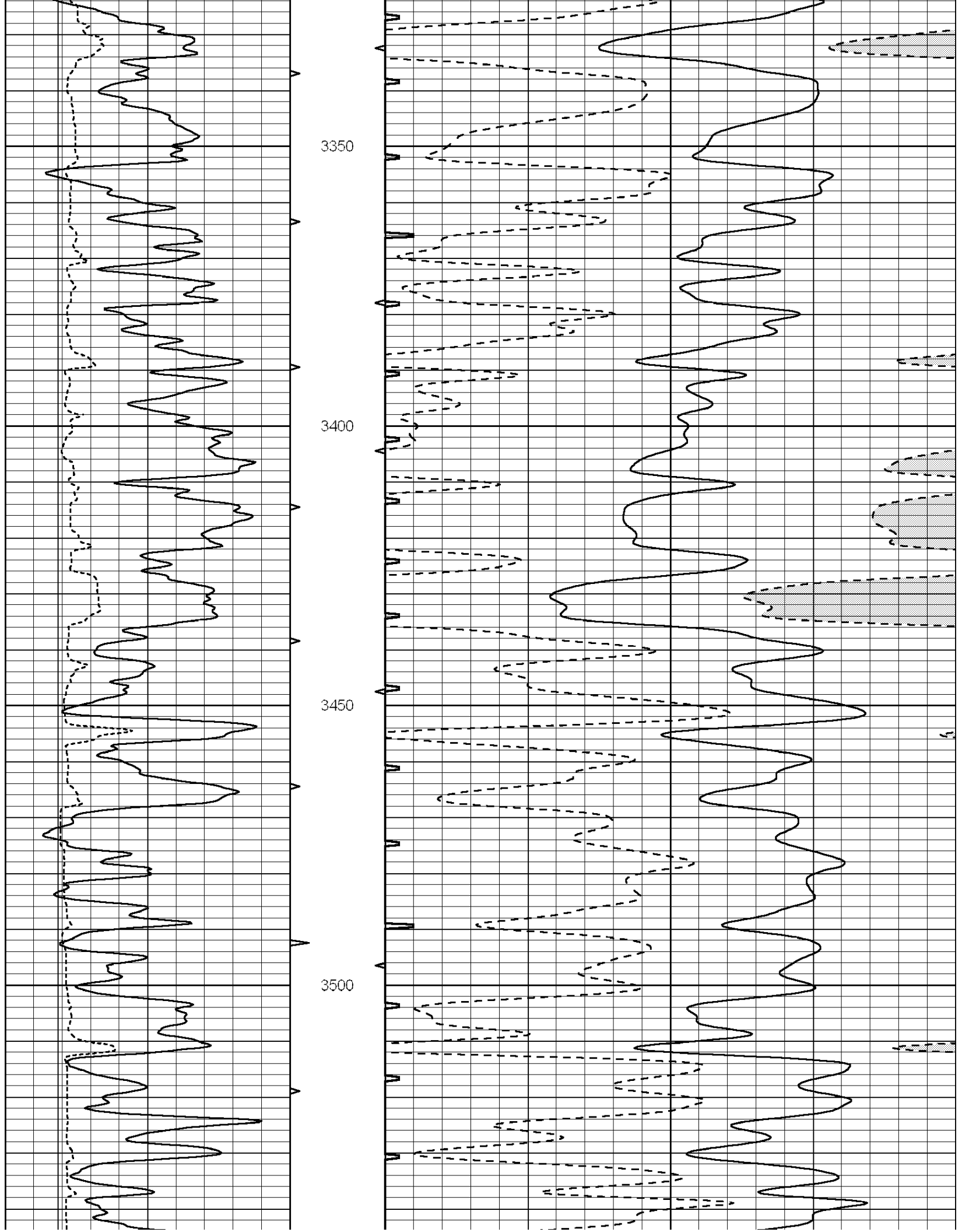


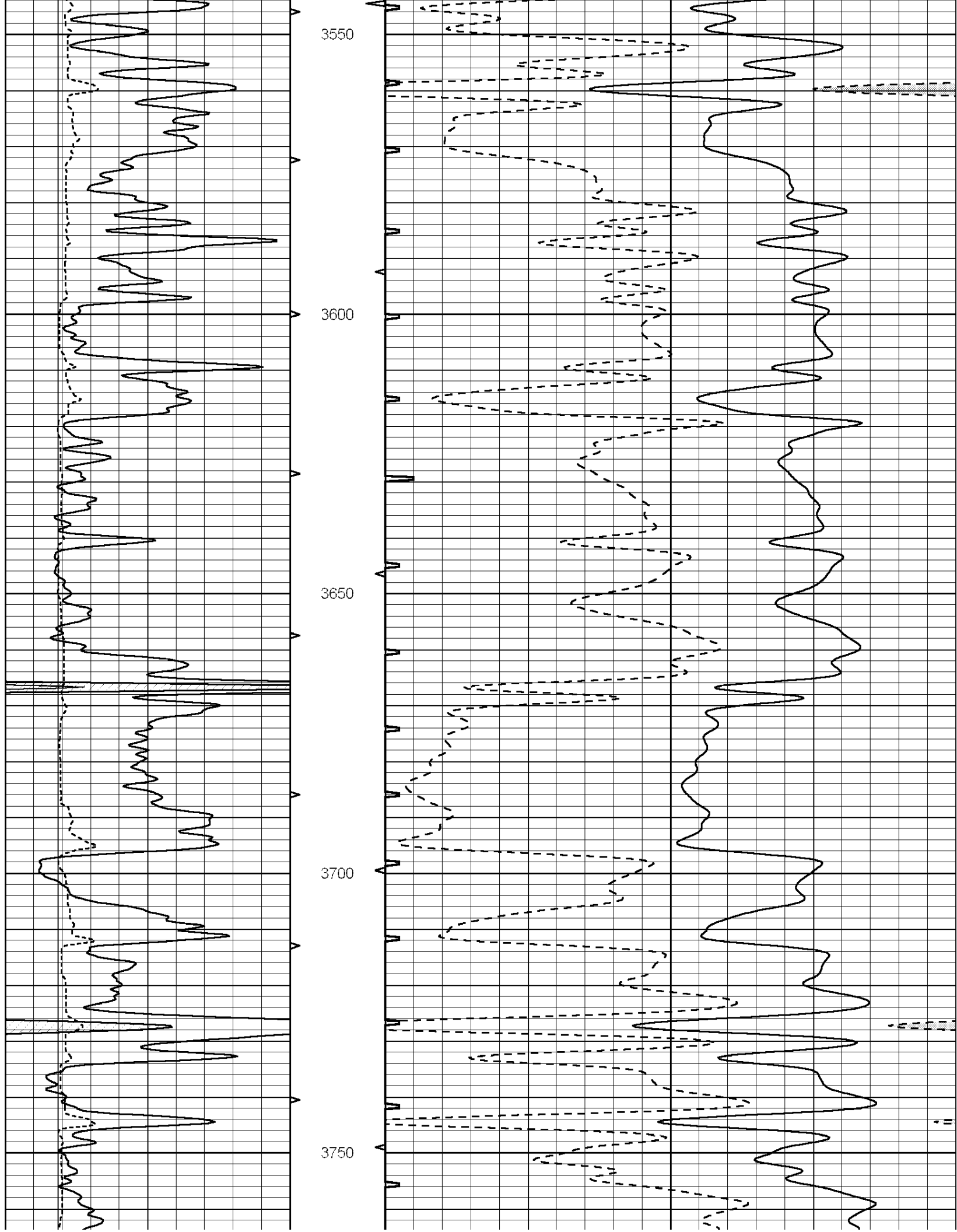


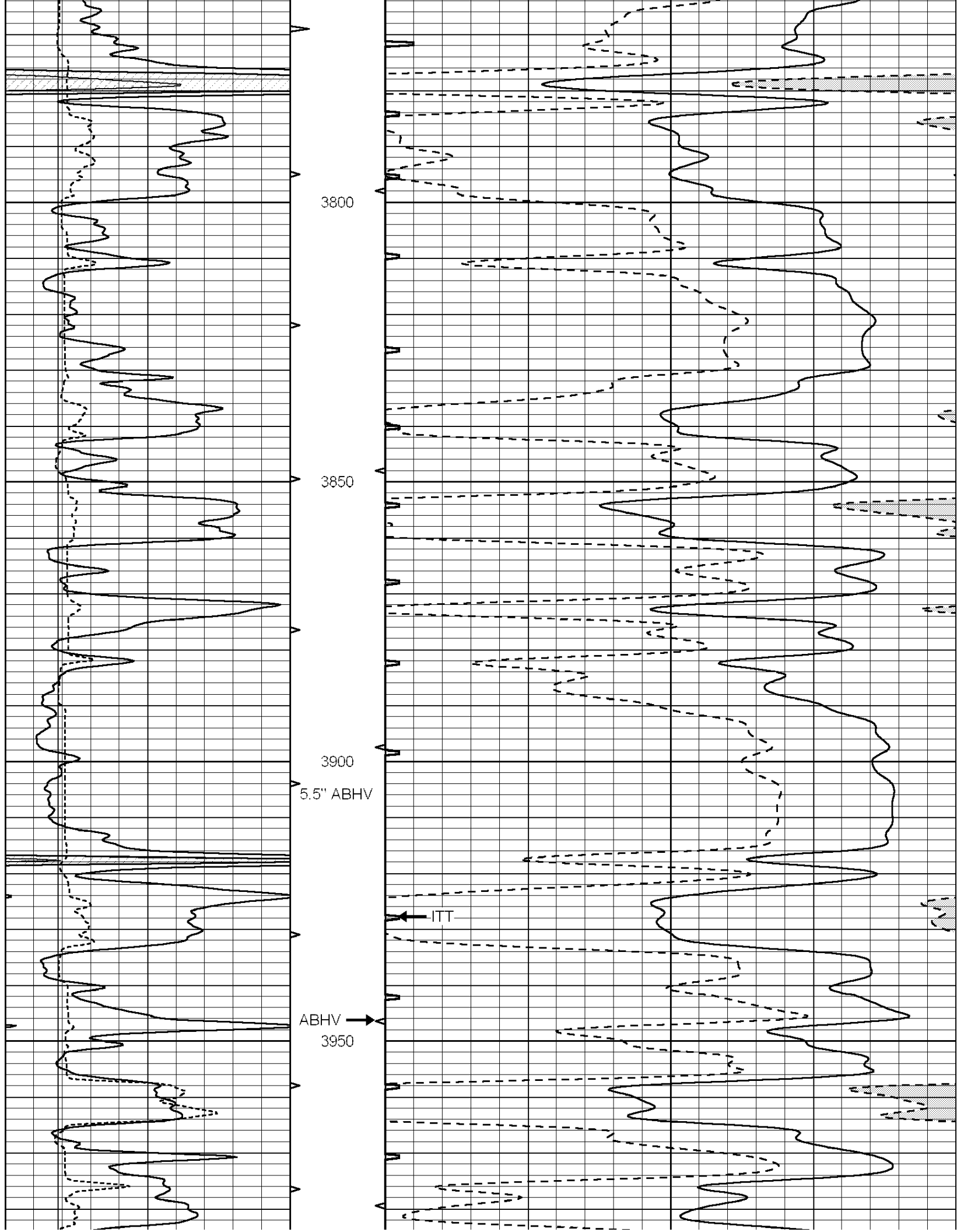


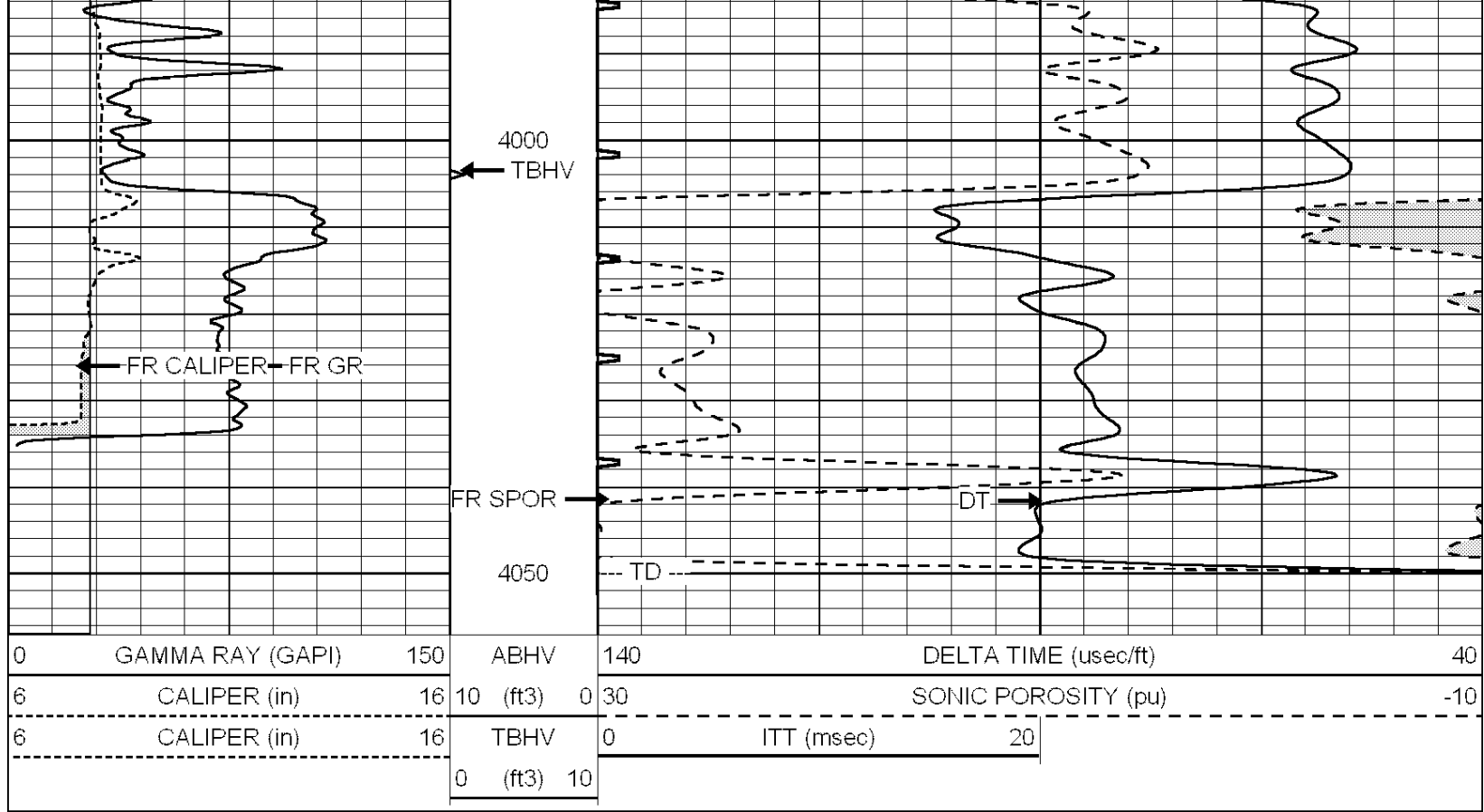








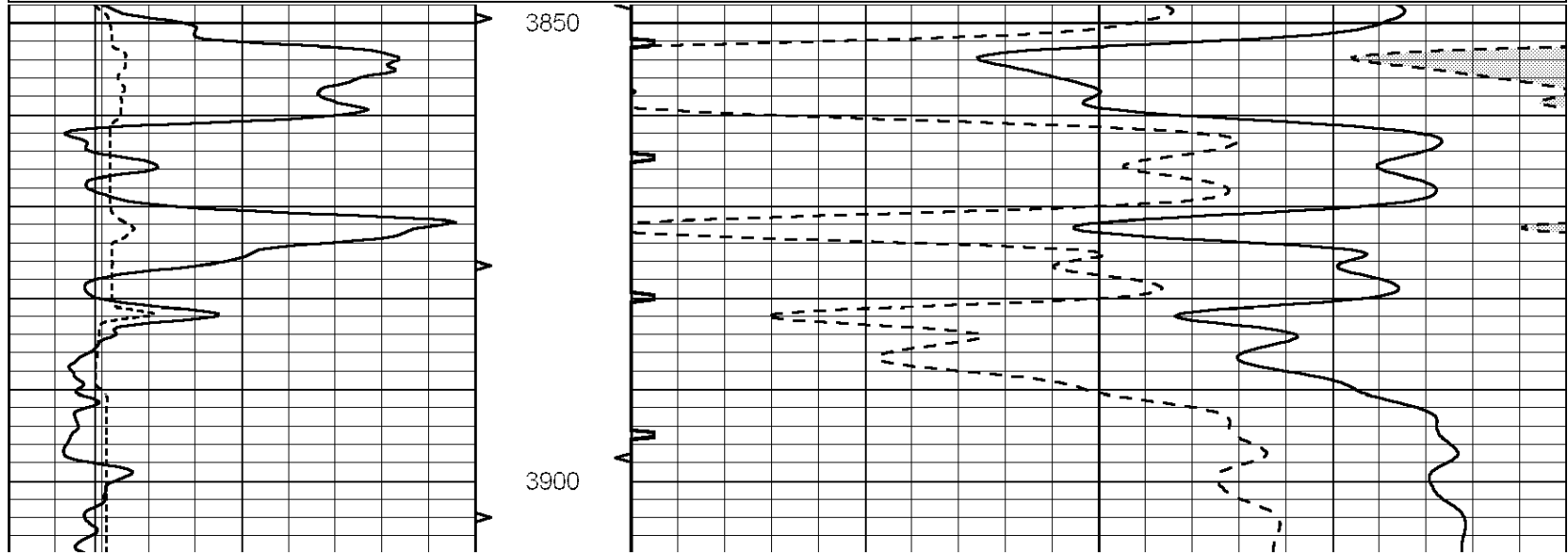


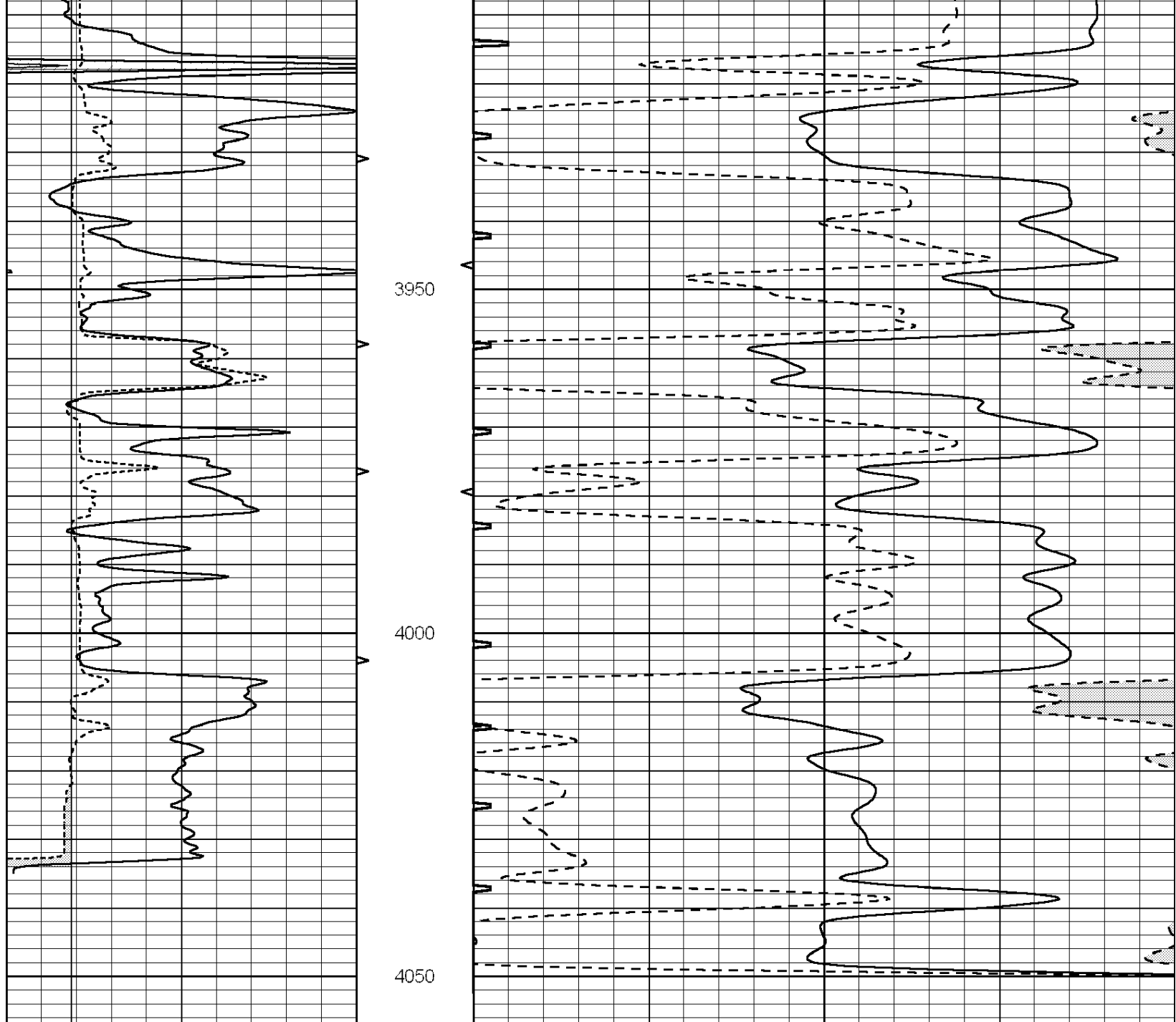


REPEAT SECTION

Database File: 26257ddn.db
 Dataset Pathname: pass5.1A
 Presentation Format: slt
 Dataset Creation: Fri Nov 14 03:37:26 2014
 Charted by: Depth in Feet scaled 1:240

0	GAMMA RAY (GAPI)	150	ABHV	140	DELTA TIME (usec/ft)	40
6	CALIPER (in)	16	10 (ft3)	0 30	SONIC POROSITY (pu)	-10
			TBHV	0	ITT (msec)	20
			0 (ft3)	10		





0	GAMMA RAY (GAPI)	150	ABHV	140	DELTA TIME (usec/ft)	40	
6	CALIPER (in)	16	10 (ft3)	0	30	SONIC POROSITY (pu)	-10
			TBHV	0	ITT (msec)	20	
			0 (ft3)	10			