



**COMPLETION
& PRODUCTION
SERVICES CO.**

**MICRO
LOG**

Company VALHALLA EXPLORATION, LLC.
Well SCHARTZ #1-11
Field TAYLOR NORTHEAST
County STAFFORD State KANSAS

Company VALHALLA EXPLORATION, LLC.
Well SCHARTZ #1-11
Field TAYLOR NORTHEAST
County STAFFORD
State KANSAS

Location: 330' FNL & 2200' FEL
API #: 15-185-23899-00-00
SEC 11 TWP 21S RGE 14W
Permanent Datum GROUND LEVEL Elevation 1921
Log Measured From KELLY BUSHING 8' A.G.L.
Drilling Measured From KELLY BUSHING
Other Services
CDL/CNL/PE
DIL/SON
Elevation
K.B. 1929
D.F. 1927
G.L. 1921

Date	9/20/14
Run Number	TWO
Depth Driller	3796
Depth Logger	3797
Bottom Logged Interval	3789
Top Log Interval	2850
Casing Driller	8 5/8 @ 817'
Casing Logger	820'
Bit Size	7.875
Type Fluid in Hole	CHEMICAL MUD
Density / Viscosity	9.3/62
pH / Fluid Loss	10.0/10.6
Source of Sample	FLOWLINE
Rm @ Meas. Temp	0.40 @ 92F
Rmf @ Meas. Temp	0.30 @ 92F
Rmc @ Meas. Temp	0.48 @ 92F
Source of Rmf / Rmc	MEASURED
Rm @ BHT	0.32 @ 114F
Time Circulation Stopped	2 HOURS
Time Logger on Bottom	
Maximum Recorded Temperature	114F
Equipment Number	3802
Location	HAYS, KS.
Recorded By	JEFF GRONEWEG
Witnessed By	ADAM NIGHSWONGER

<<< Fold Here >>>

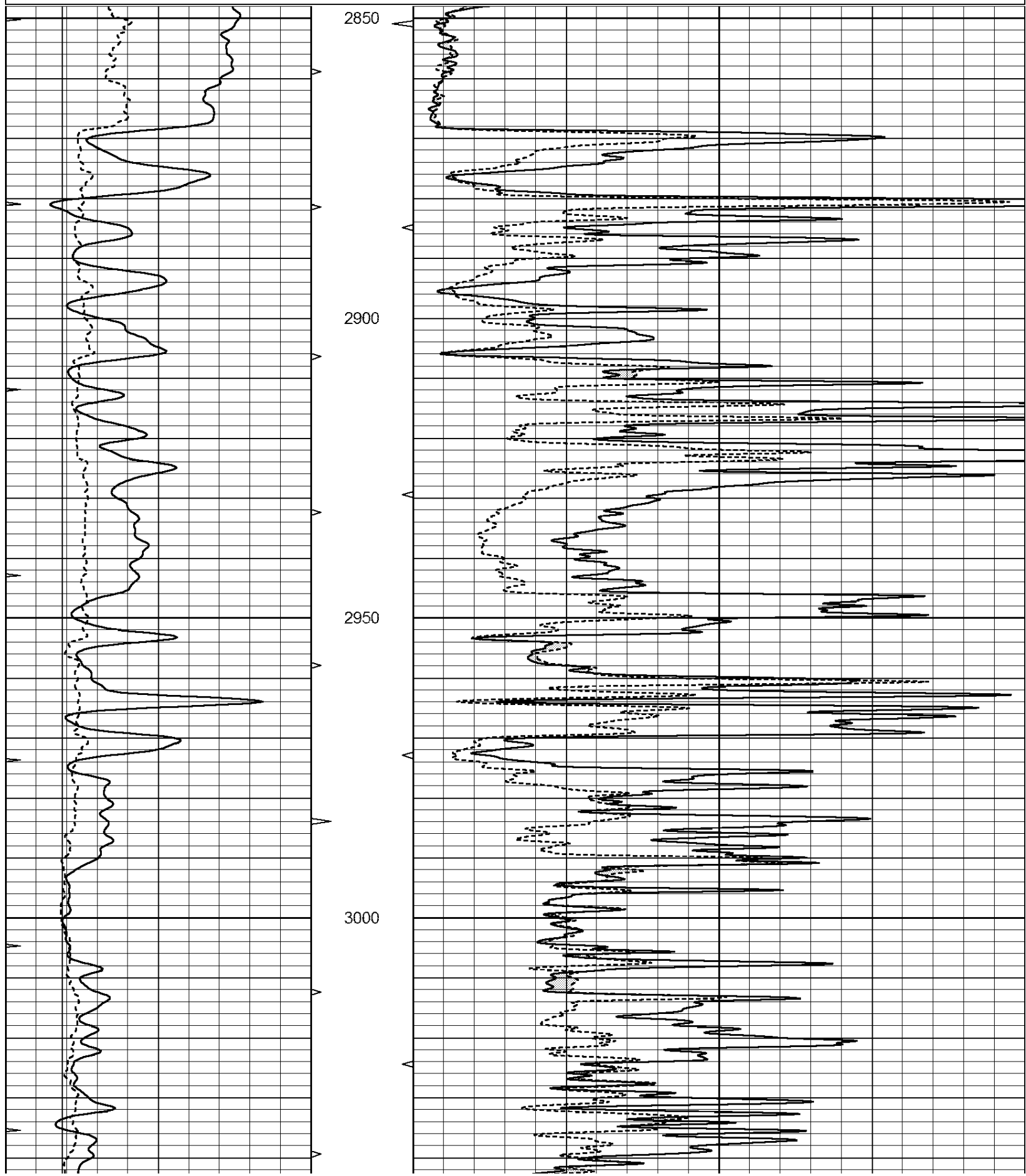
All interpretations are opinions based on inferences from electrical or other measurements and we cannot and do not guarantee the accuracy or correctness of any interpretation, and we shall not, except in the case of gross or willful negligence on our part, be liable or responsible for any loss, costs, damages, or expenses incurred or sustained by anyone resulting from any interpretation made by any of our officers, agents or employees. These interpretations are also subject to our general terms and conditions set out in our current Price Schedule.

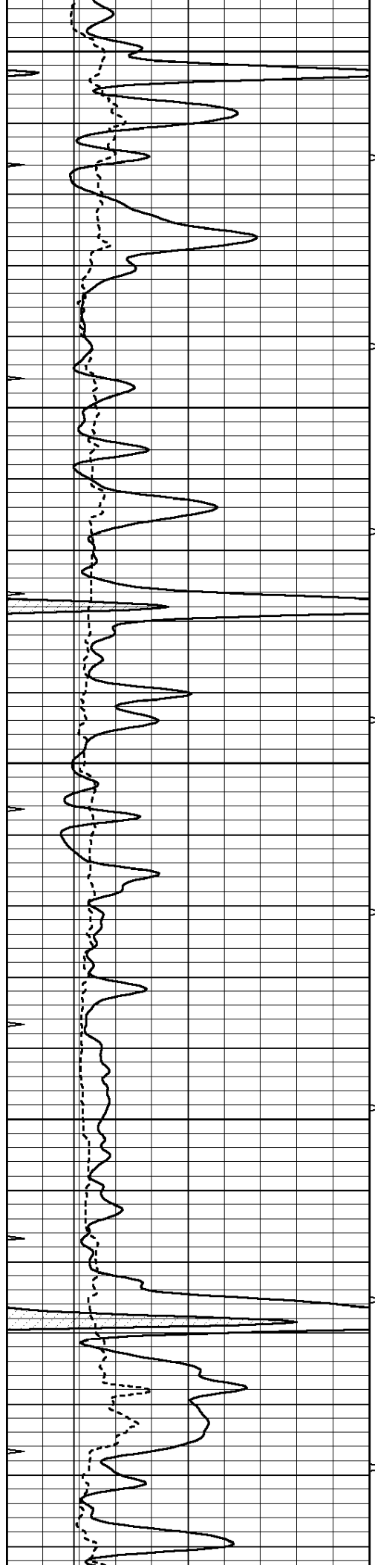
Comments

NABORS COMPLETION & PRODUCTION SERVICES CO.
785 (628 - 6395)
THANK YOU FOR YOUR BUSINESS
DIRECTIONS: GREAT BEND, KS - 9 MILES SOUTH TO RD 200
4 1/2 MILES WEST - S INTO

0	GAMMA RAY (GAPI)	150
6	MELCAL (in)	16
0	MINMK	20

0	MEL1.5 (Ohm-m)	40
0	MEL2.0 (Ohm-m)	40





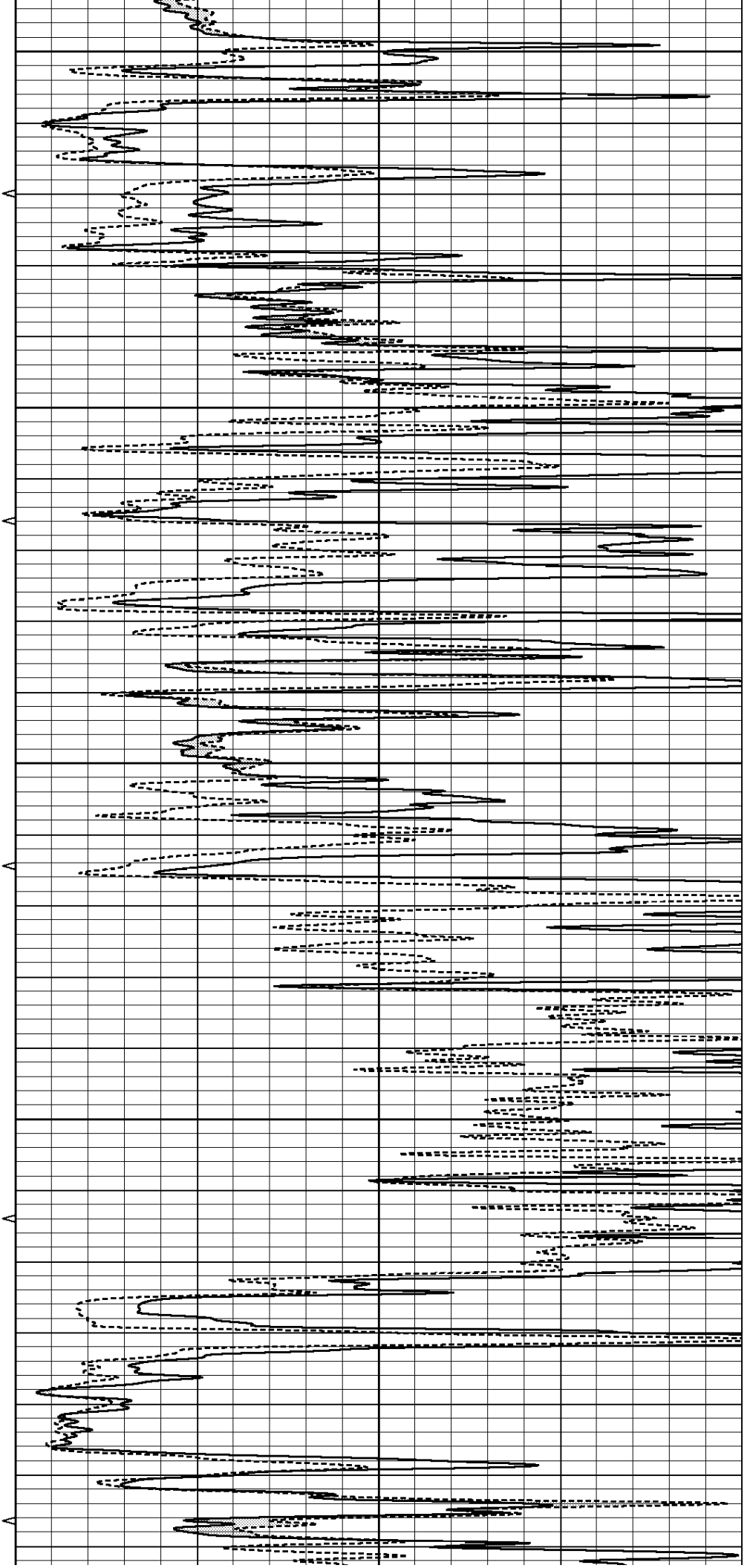
3050

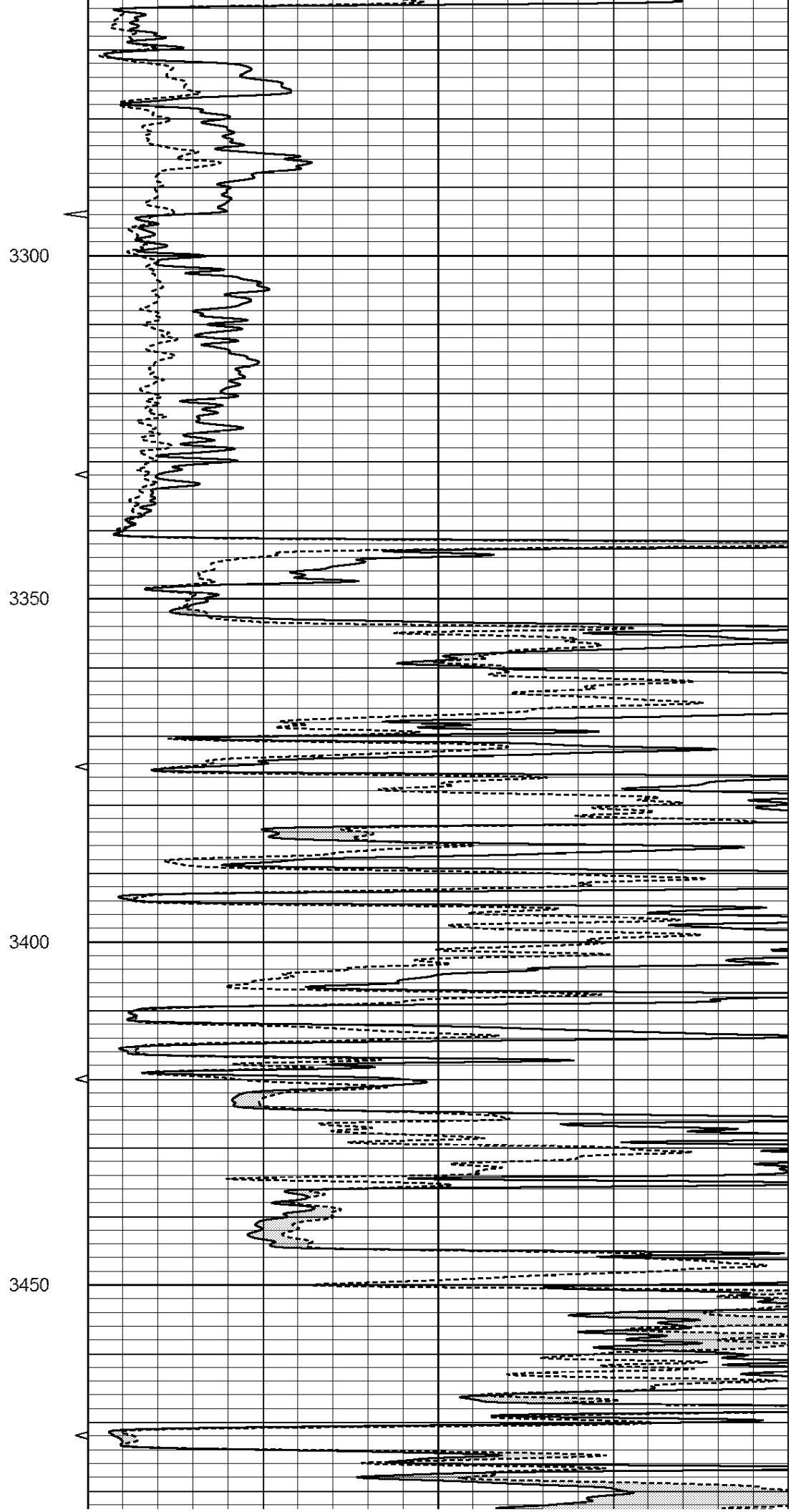
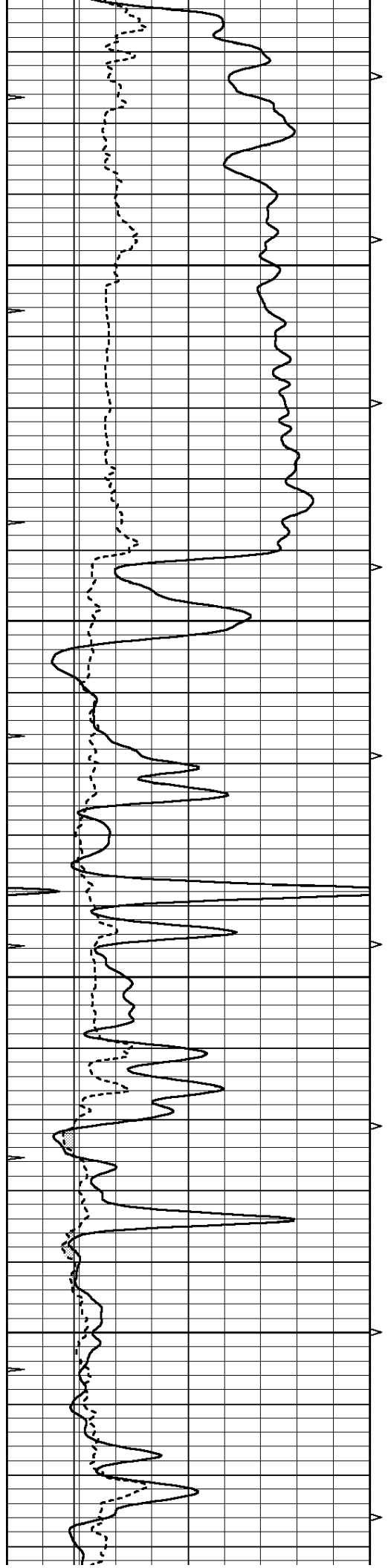
3100

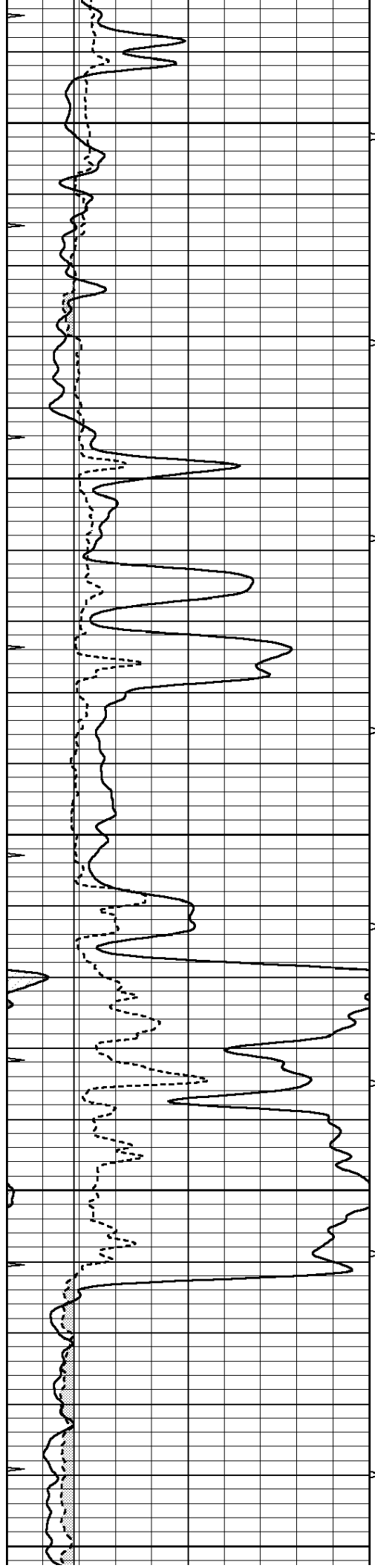
3150

3200

3250







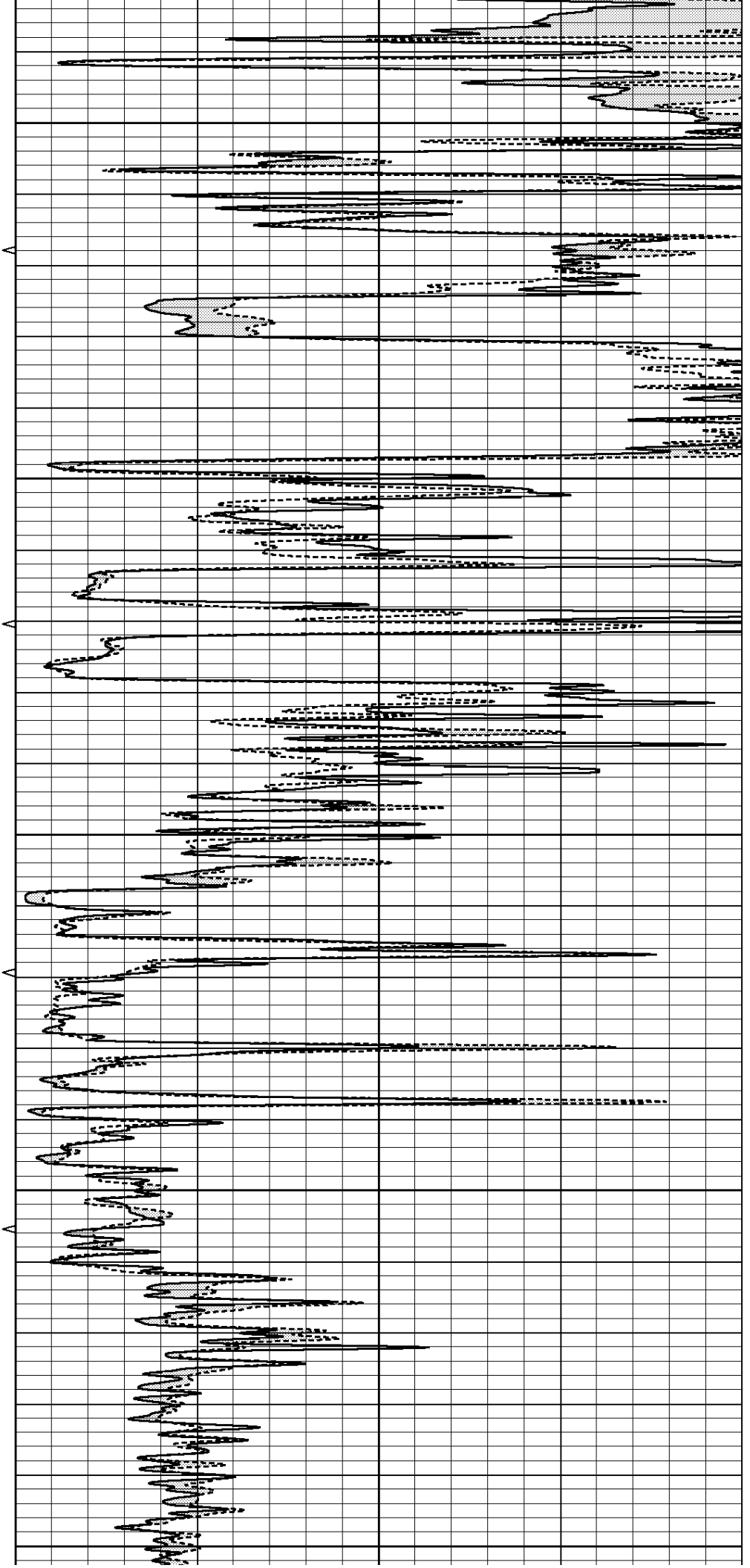
3500

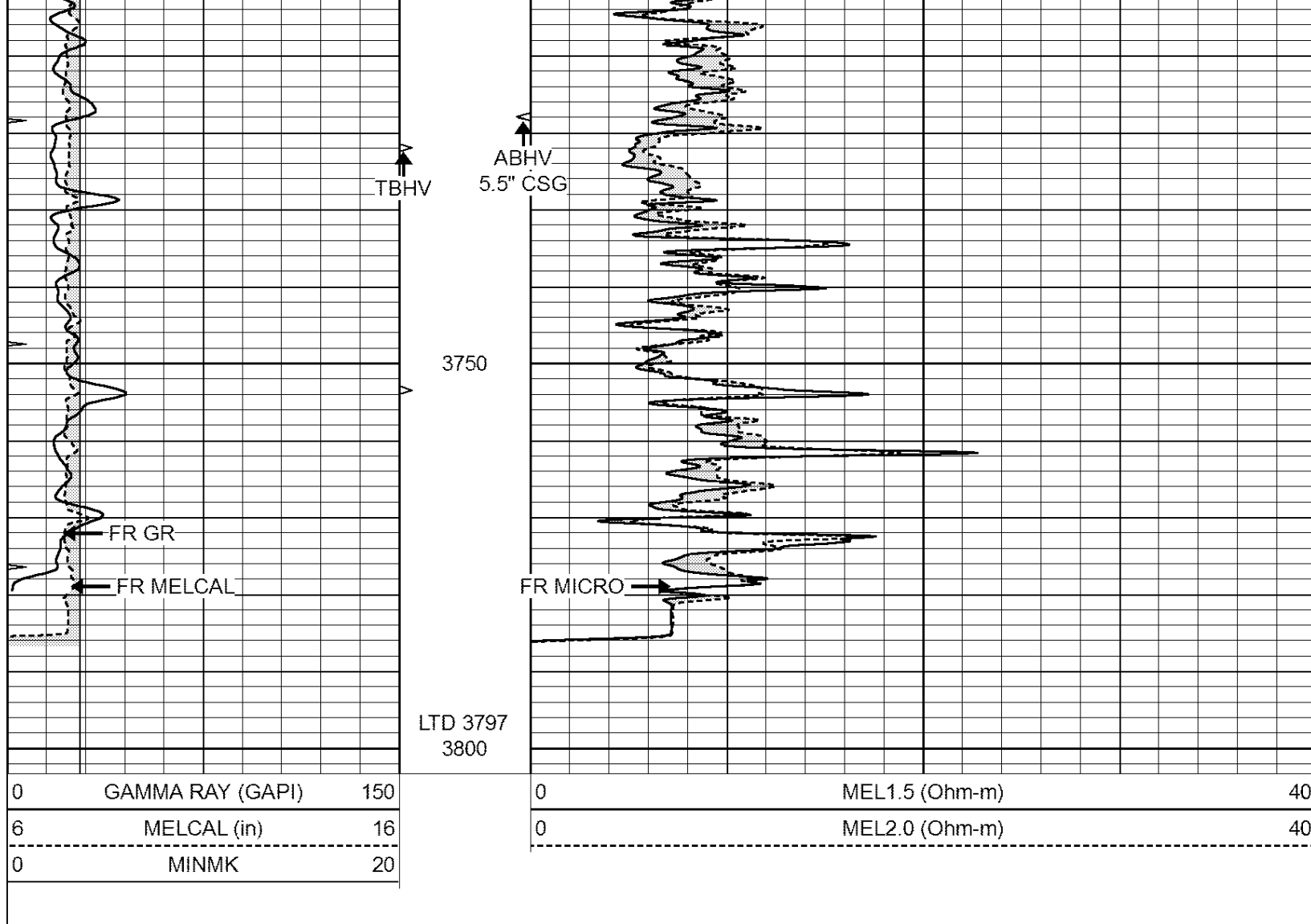
3550

3600

3650

3700

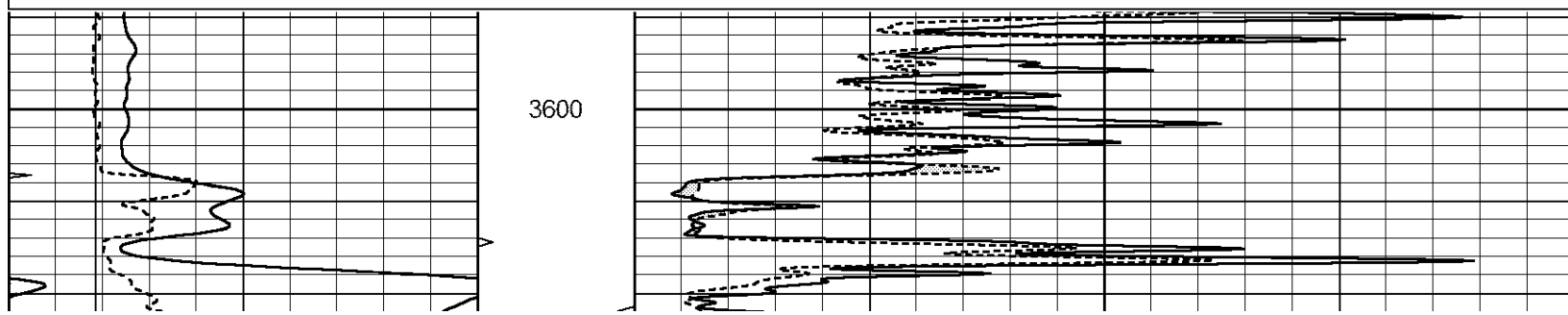


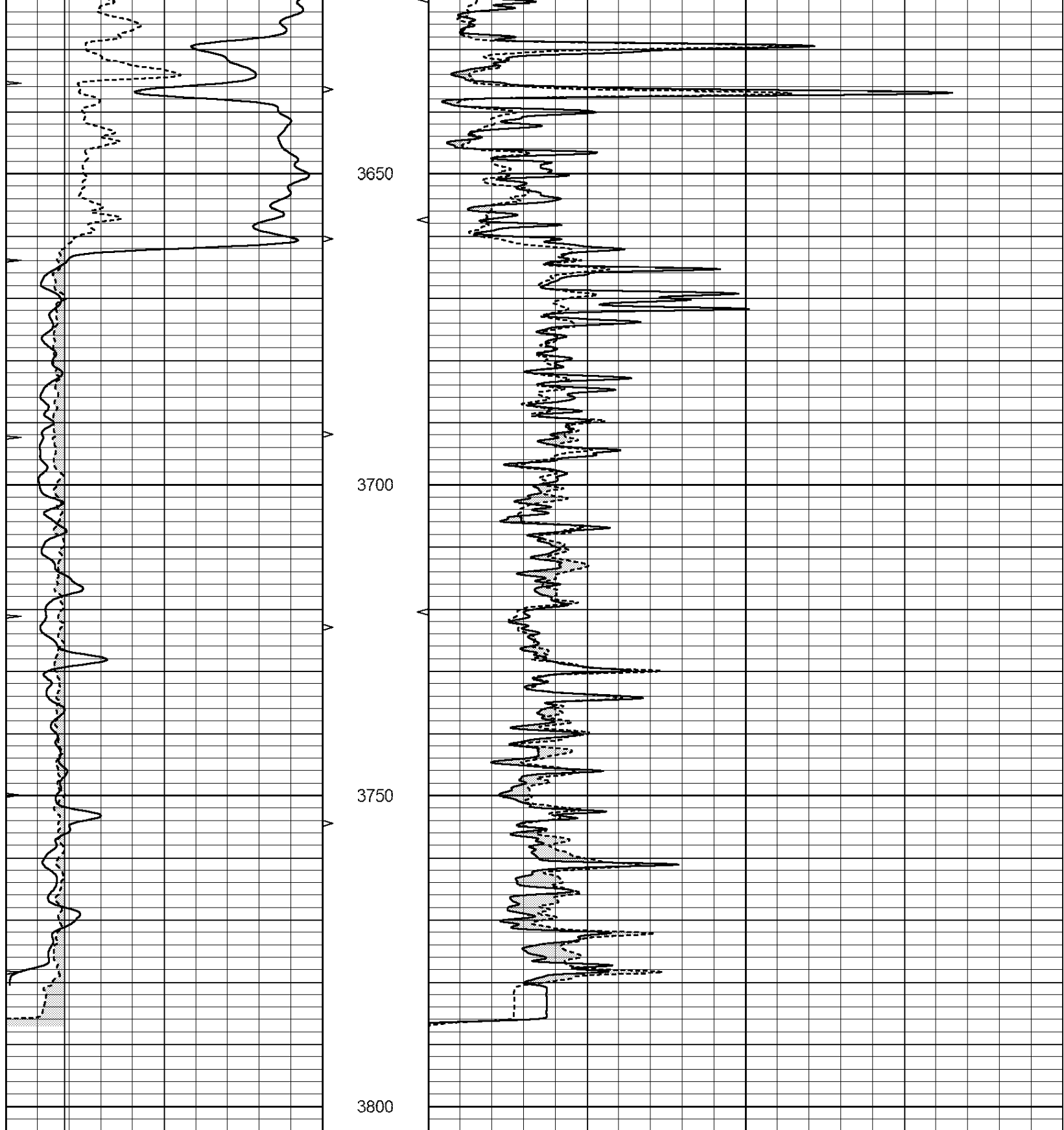


REPEAT SECTION

Database File: 25819pe.db
 Dataset Pathname: pass5.2
 Presentation Format: _micro
 Dataset Creation: Sat Sep 20 16:21:50 2014 by Calc Open-Cased 090629
 Charted by: Depth in Feet scaled 1:240

0	GAMMA RAY (GAPI)	150	0	MEL1.5 (Ohm-m)	40
6	MELCAL (in)	16	0	MEL2.0 (Ohm-m)	40
0	MINMK	20			





0	GAMMA RAY (GAPI)	150
6	MELCAL (in)	16
0	MINMK	20

0	MEL1.5 (Ohm-m)	40
0	MEL2.0 (Ohm-m)	40

Calibration Report

Database File: 25819pe.db
 Dataset Pathname: pass6.1.1
 Dataset Creation: Sat Sep 20 10:51:04 2014 by Gale Owen Good 000000

MICRO Calibration Report

Serial Number:	MICRO4
Tool Model:	PROBE
Performed:	Wed Aug 13 17:16:52 2014

Caliper Calibration:	Gain=2.000	Offset=-4.200
----------------------	------------	---------------

	Low Cal	High Cal
References	8.600	14.000
Readings	5.934	7.767

1.5" Calibration:	Gain=42.000	Offset=-1.100
-------------------	-------------	---------------

	Low Cal	High Cal
References	0.000	20.000
Readings	0.013	1.547

2" Calibration:	Gain=60.000	Offset=-1.100
-----------------	-------------	---------------

	Low Cal	High Cal
References	0.000	20.000
Readings	0.017	1.202

Gamma Ray Calibration Report

Serial Number:	GR2
Tool Model:	OPEN
Performed:	Sat Aug 02 03:42:50 2014

Calibrator Value:	200.0	GAPI
-------------------	-------	------

Background Reading:	0.0	cps
Calibrator Reading:	740.0	cps

Sensitivity:	0.3300	GAPI/cps
--------------	--------	----------