



**COMPLETION  
& PRODUCTION  
SERVICES CO.**

**SONIC  
LOG**

Company VALHALLA EXPLORATION, LLC.  
Well SCHARTZ #1-11  
Field TAYLOR NORTHEAST  
County STAFFORD State KANSAS

Company VALHALLA EXPLORATION, LLC.  
Well SCHARTZ #1-11  
Field TAYLOR NORTHEAST  
County STAFFORD  
State KANSAS

Location: 330' FNL & 2200' FEL  
API #: 15-185-23899-00-00  
SEC 11 TWP 21S RGE 14W  
Permanent Datum GROUND LEVEL Elevation 1921  
Log Measured From KELLY BUSHING 8' A.G.L.  
Drilling Measured From KELLY BUSHING  
Other Services  
CDL/CNL/PE  
DIL/MEL  
Elevation  
K.B. 1929  
D.F. 1927  
G.L. 1921

Date	9/20/14
Run Number	TWO
Depth Driller	3796
Depth Logger	3797
Bottom Logged Interval	3787
Top Log Interval	800
Casing Driller	8 5/8 @ 817'
Casing Logger	820'
Bit Size	7.875
Type Fluid in Hole	CHEMICAL MUD
Density / Viscosity	9.3/62
pH / Fluid Loss	10.0/10.6
Source of Sample	FLOWLINE
Rm @ Meas. Temp	0.40 @ 92F
Rmf @ Meas. Temp	0.30 @ 92F
Rmc @ Meas. Temp	0.48 @ 92F
Source of Rmf / Rmc	MEASURED
Rm @ BHT	0.32 @ 114F
Time Circulation Stopped	2 HOURS
Time Logger on Bottom	
Maximum Recorded Temperature	114F
Equipment Number	3802
Location	HAYS, KS.
Recorded By	JEFF GRONEWEG
Witnessed By	ADAM NIGHSWONGER

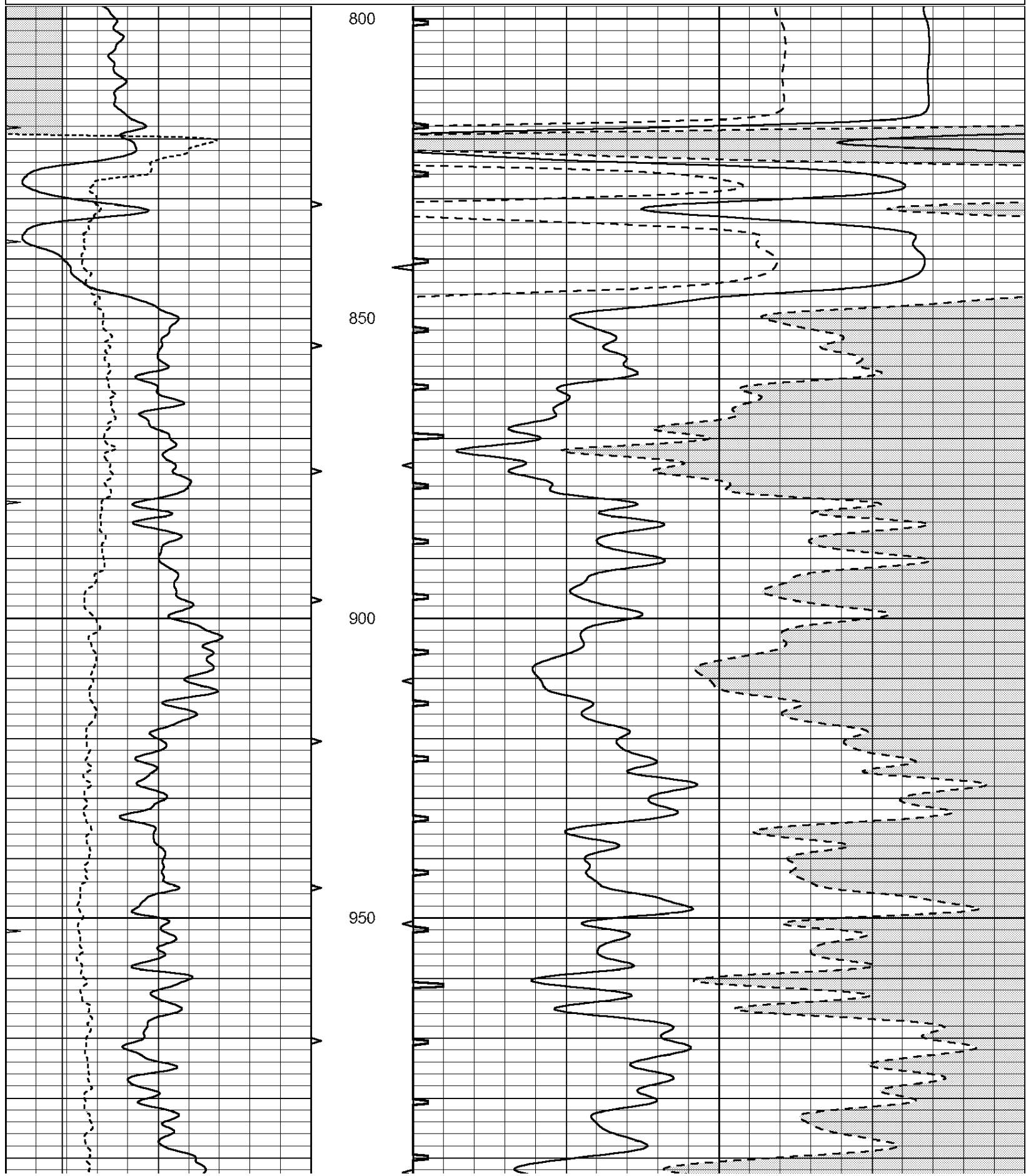
<<< Fold Here >>>

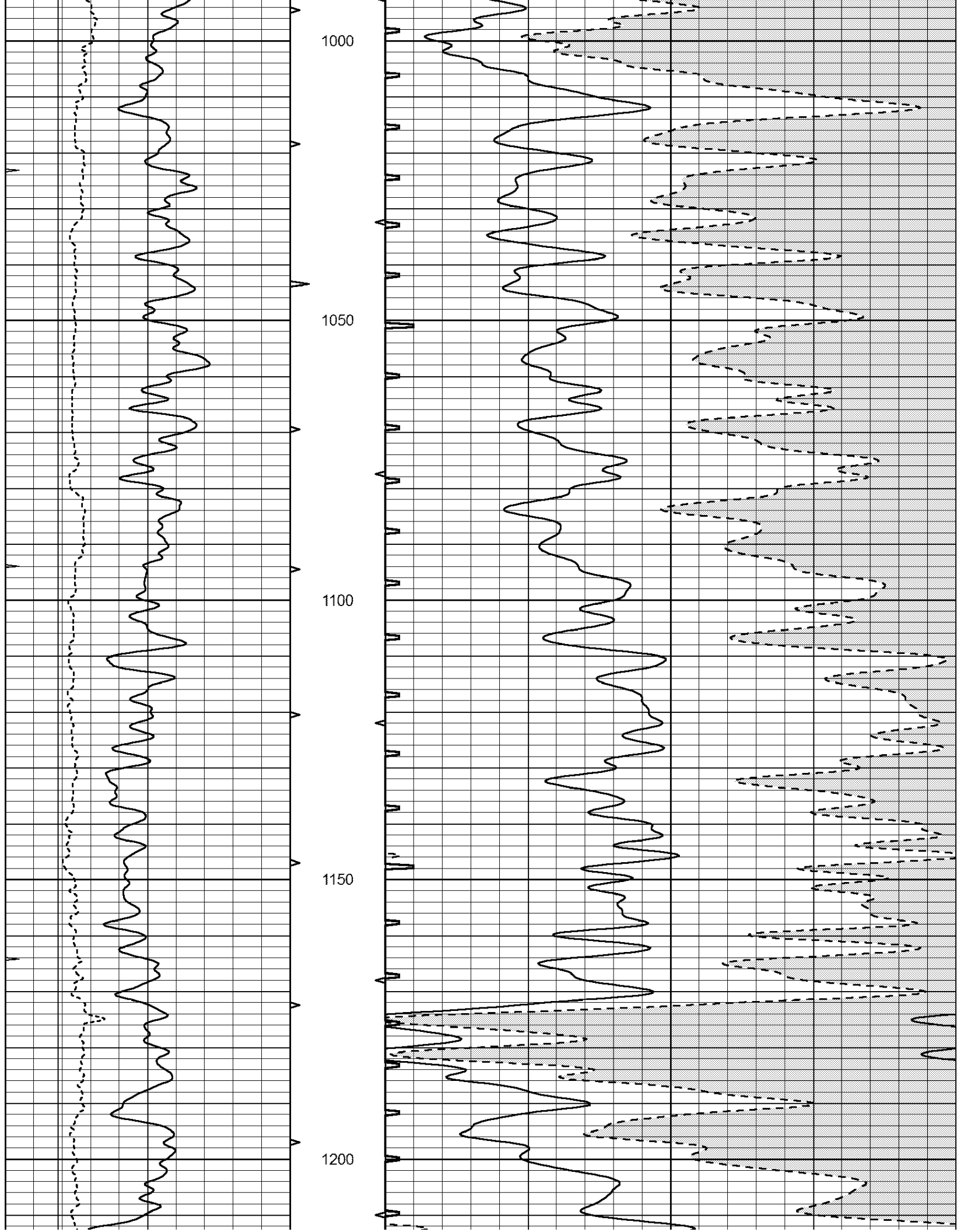
All interpretations are opinions based on inferences from electrical or other measurements and we cannot and do not guarantee the accuracy or correctness of any interpretation, and we shall not, except in the case of gross or willful negligence on our part, be liable or responsible for any loss, costs, damages, or expenses incurred or sustained by anyone resulting from any interpretation made by any of our officers, agents or employees. These interpretations are also subject to our general terms and conditions set out in our current Price Schedule.

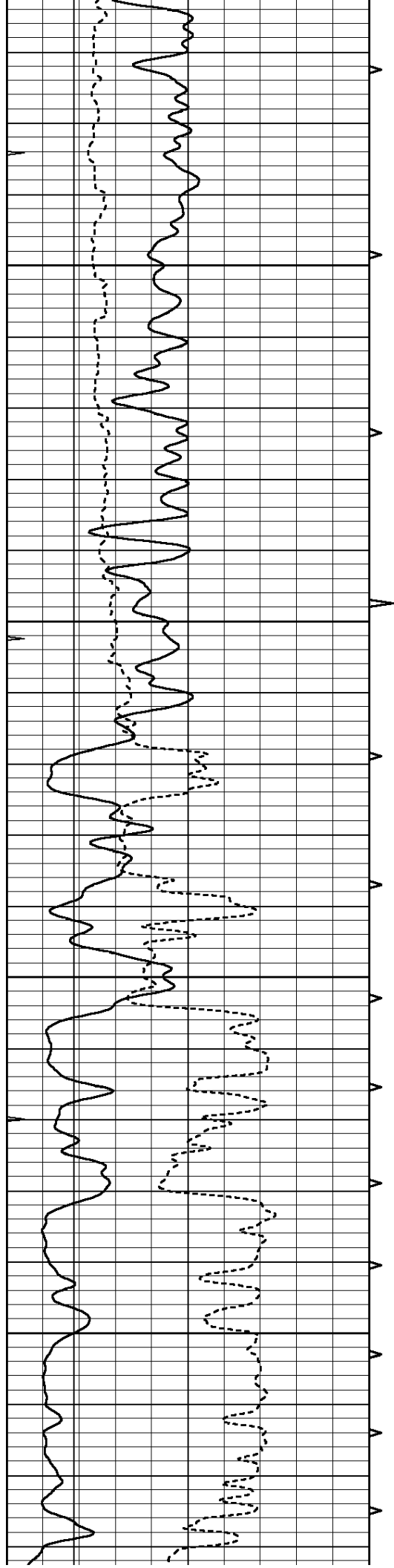
Comments

NABORS COMPLETION & PRODUCTION SERVICES CO.  
785 ( 628 - 6395 )  
THANK YOU FOR YOUR BUSINESS  
DIRECTIONS: GREAT BEND, KS - 9 MILES SOUTH TO RD 200  
4 1/2 MILES WEST - S INTO

0	GAMMA RAY (GAPI)	150	ABHV	140	DELTA TIME (usec/ft)	40
6	MELCAL (in)	16	10 (ft3)	0 30	SONIC POROSITY (pu)	-10
0	MINMK	20	TBHV	0	ITT (msec)	20
			0 (ft3)	10		





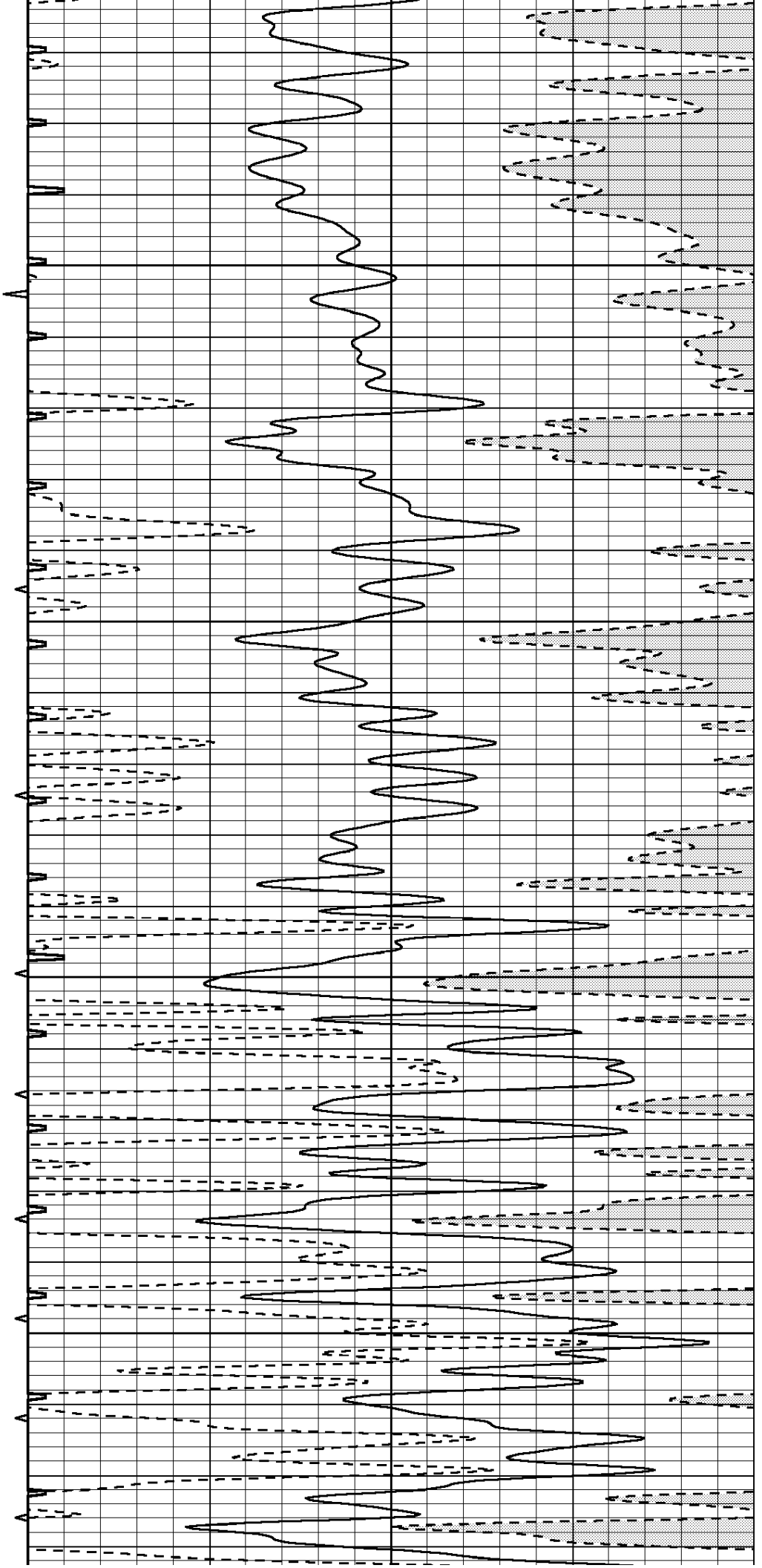


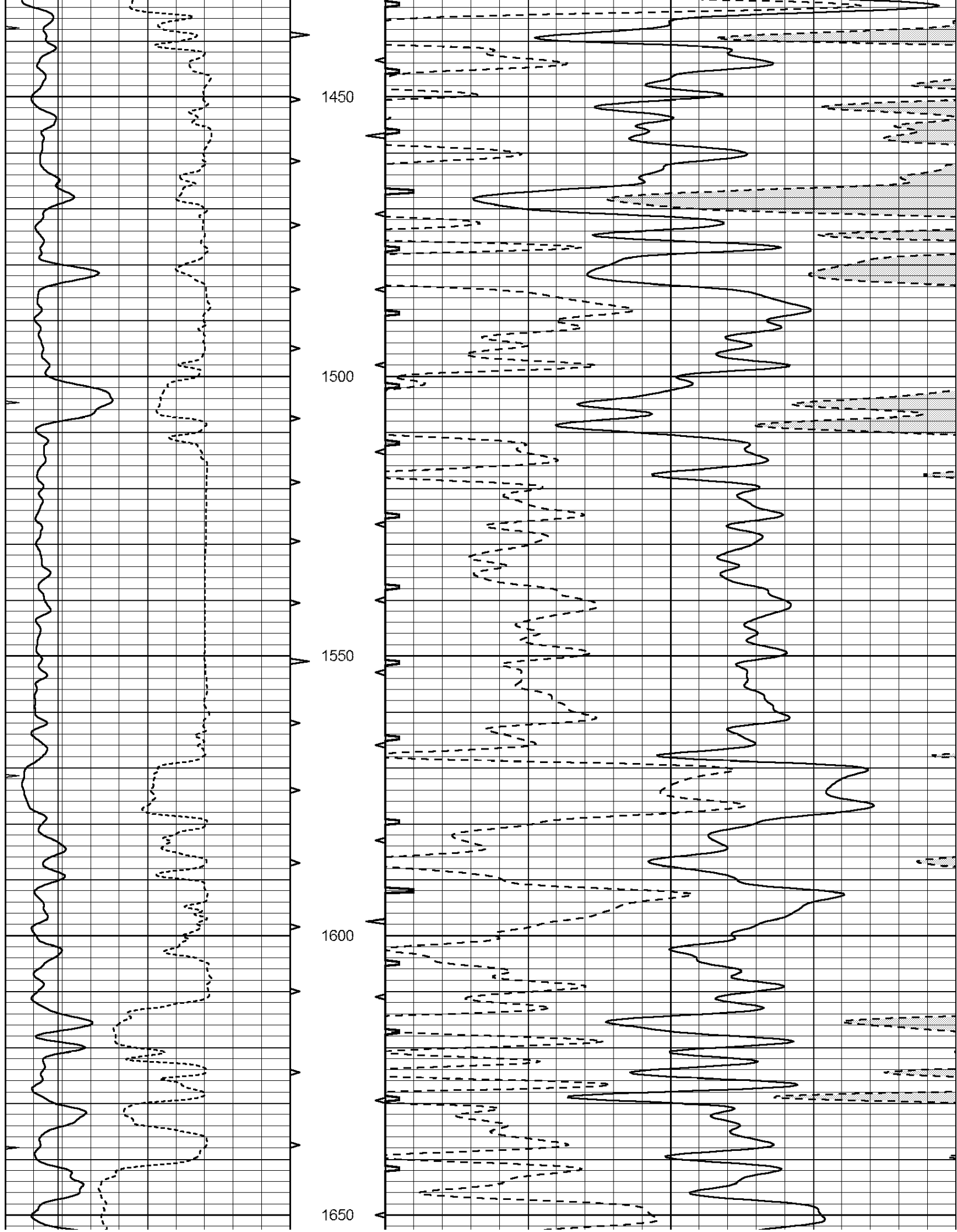
1250

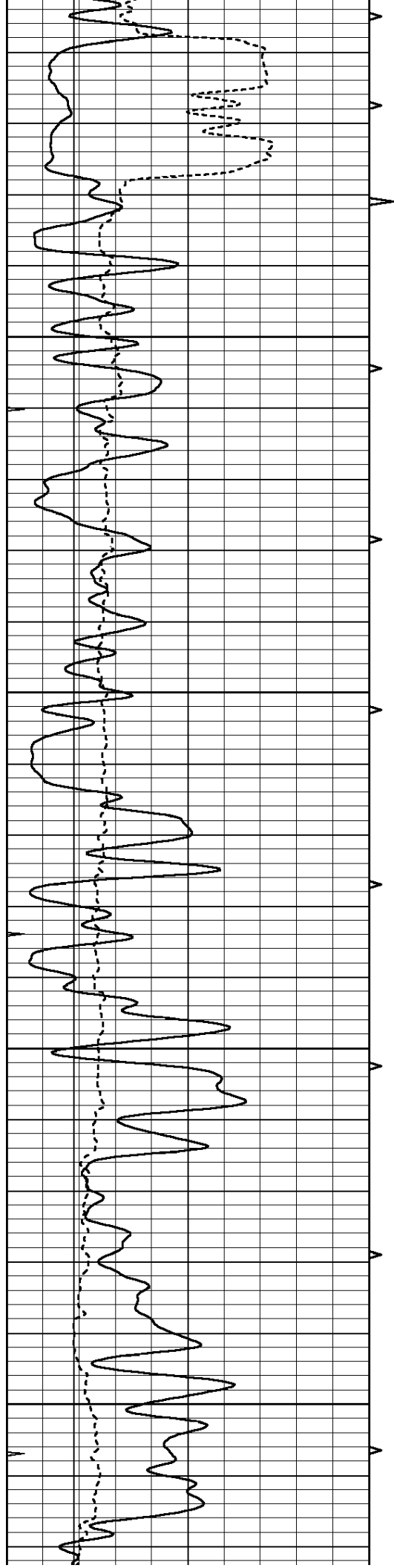
1300

1350

1400





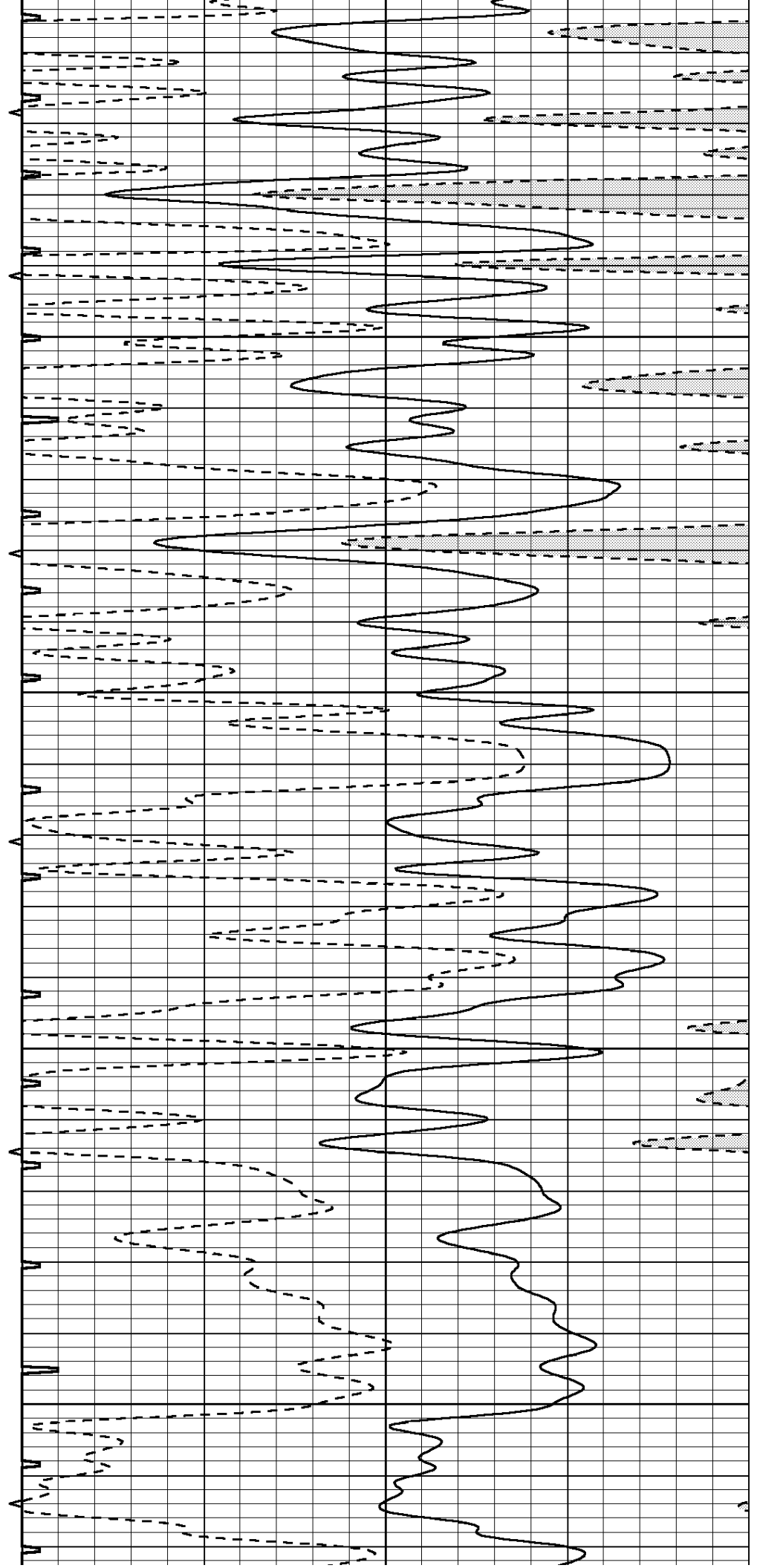


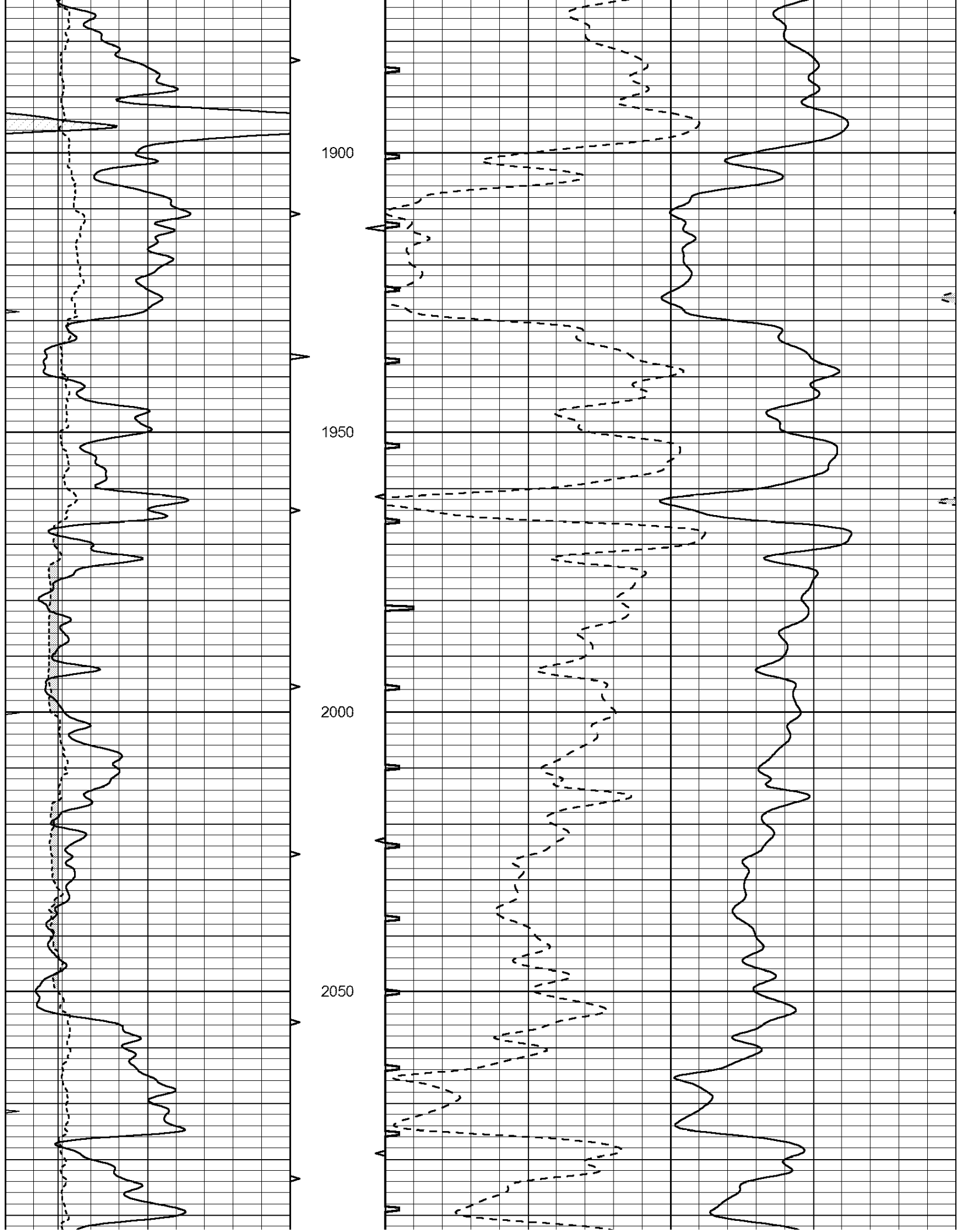
1700

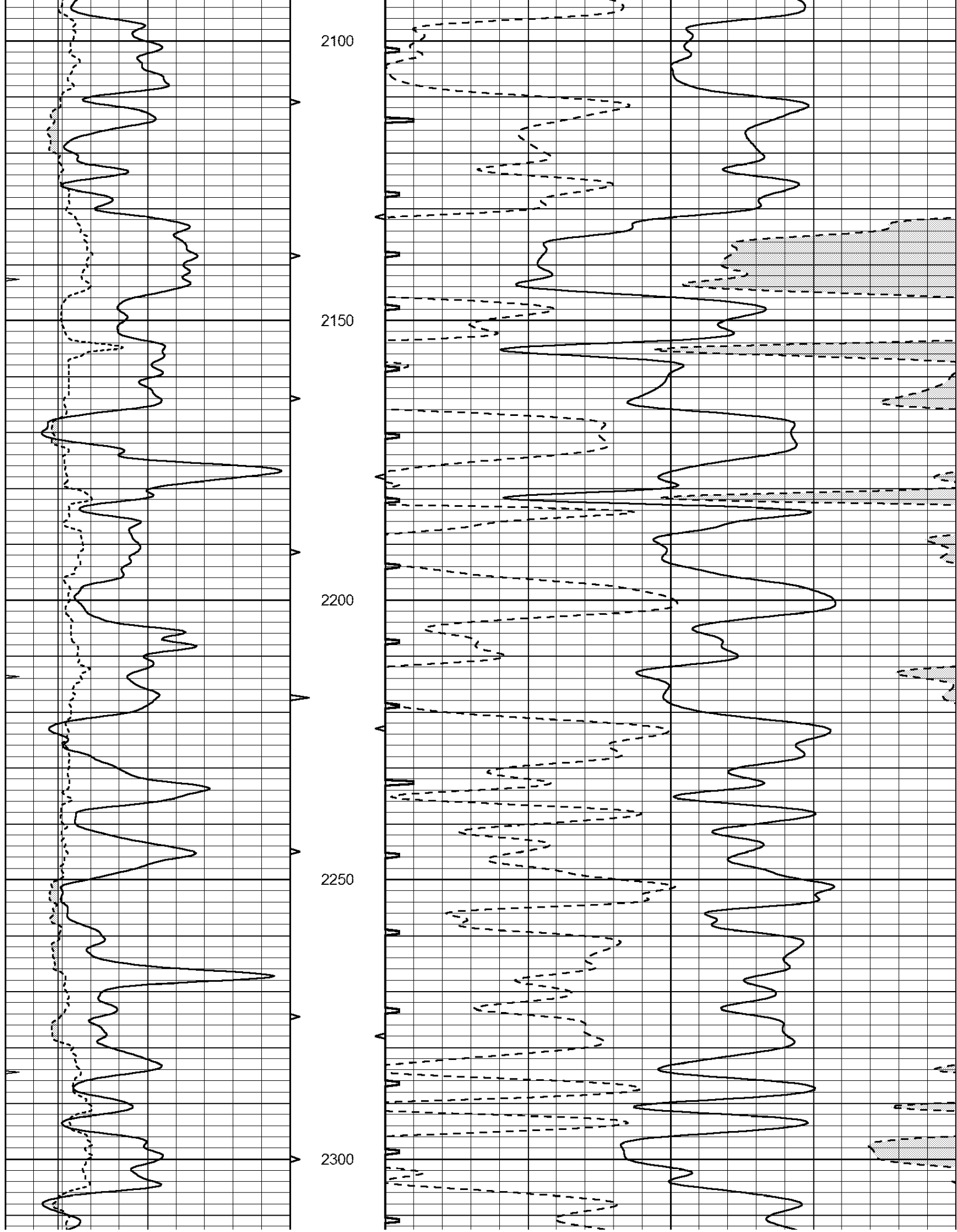
1750

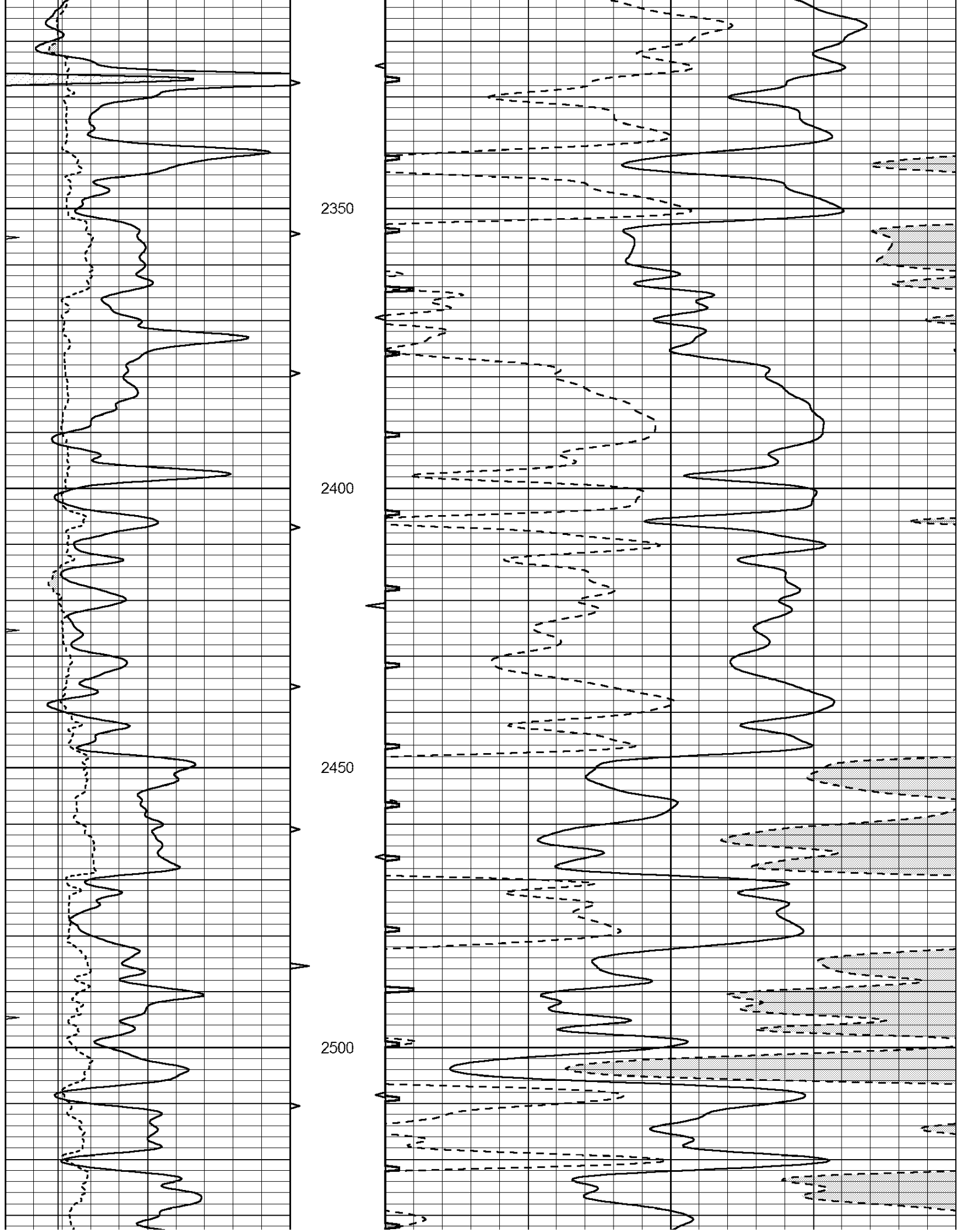
1800

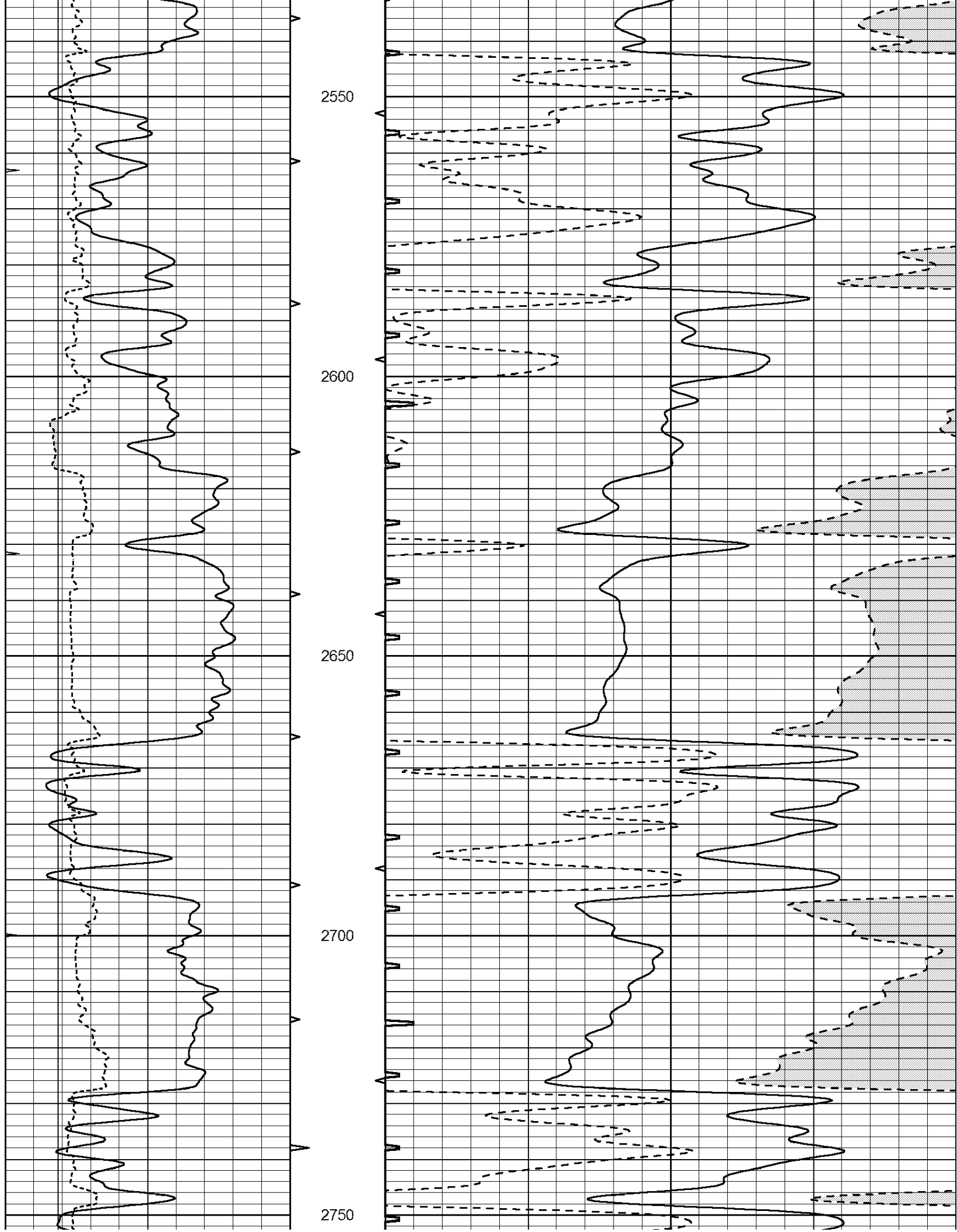
1850

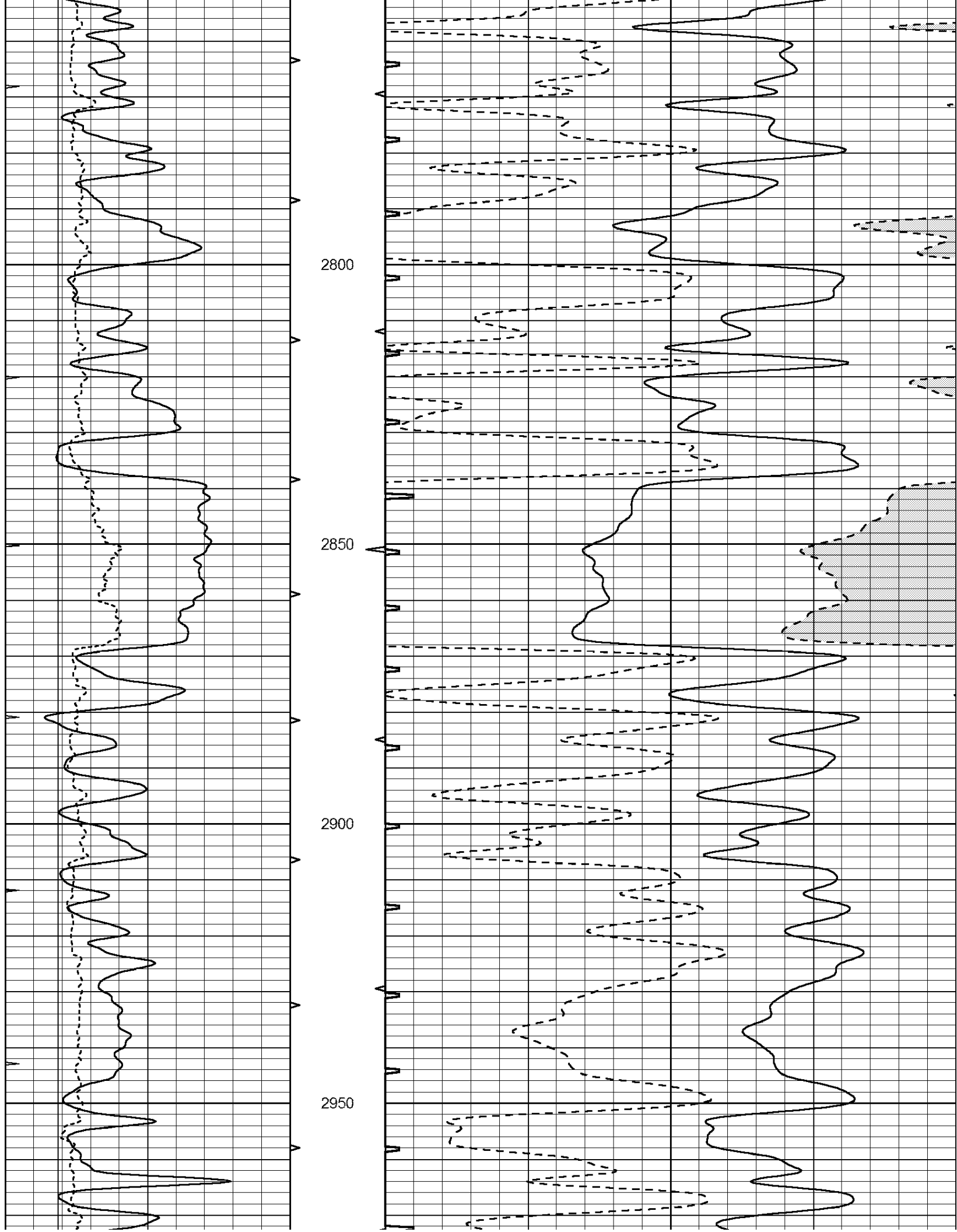


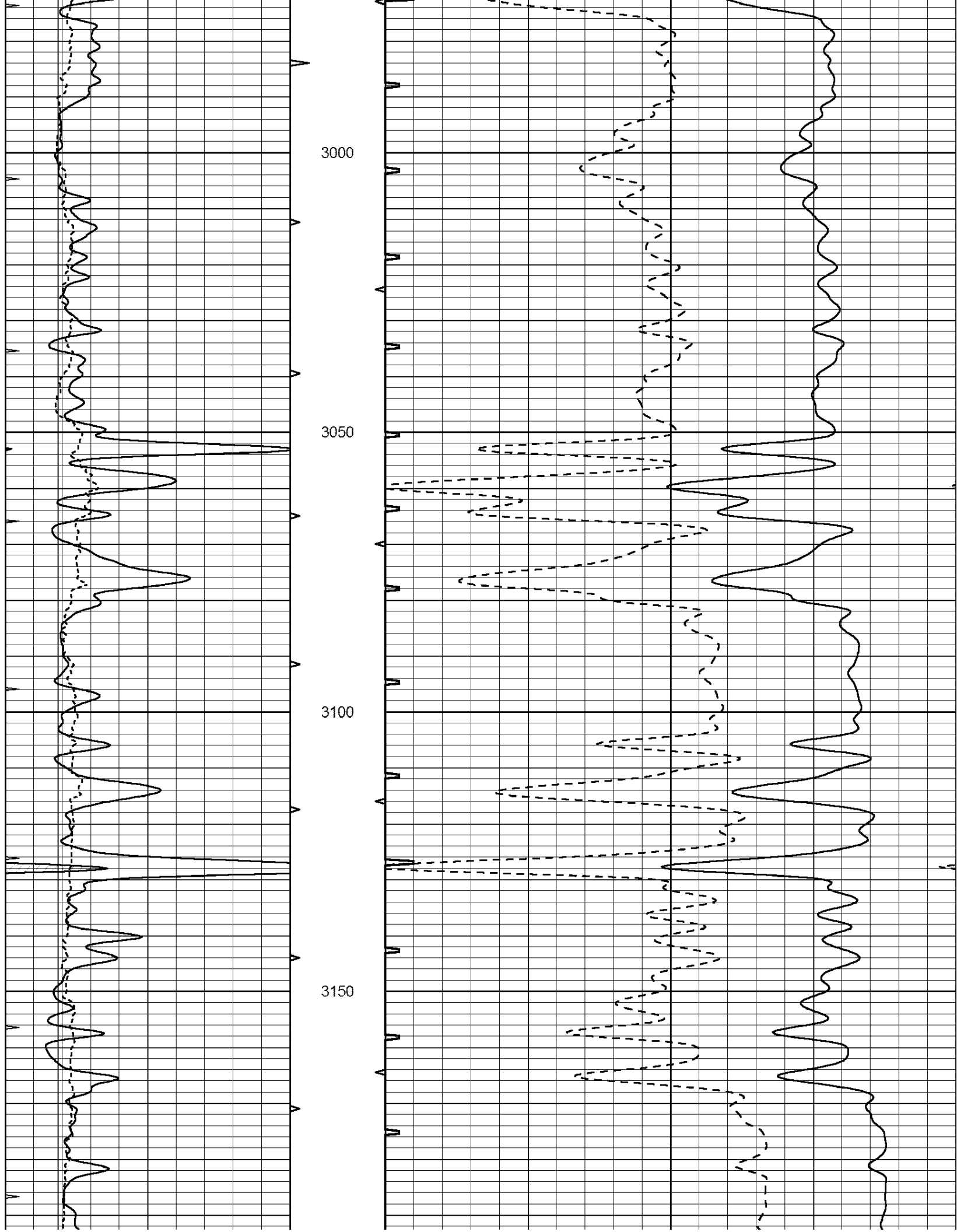


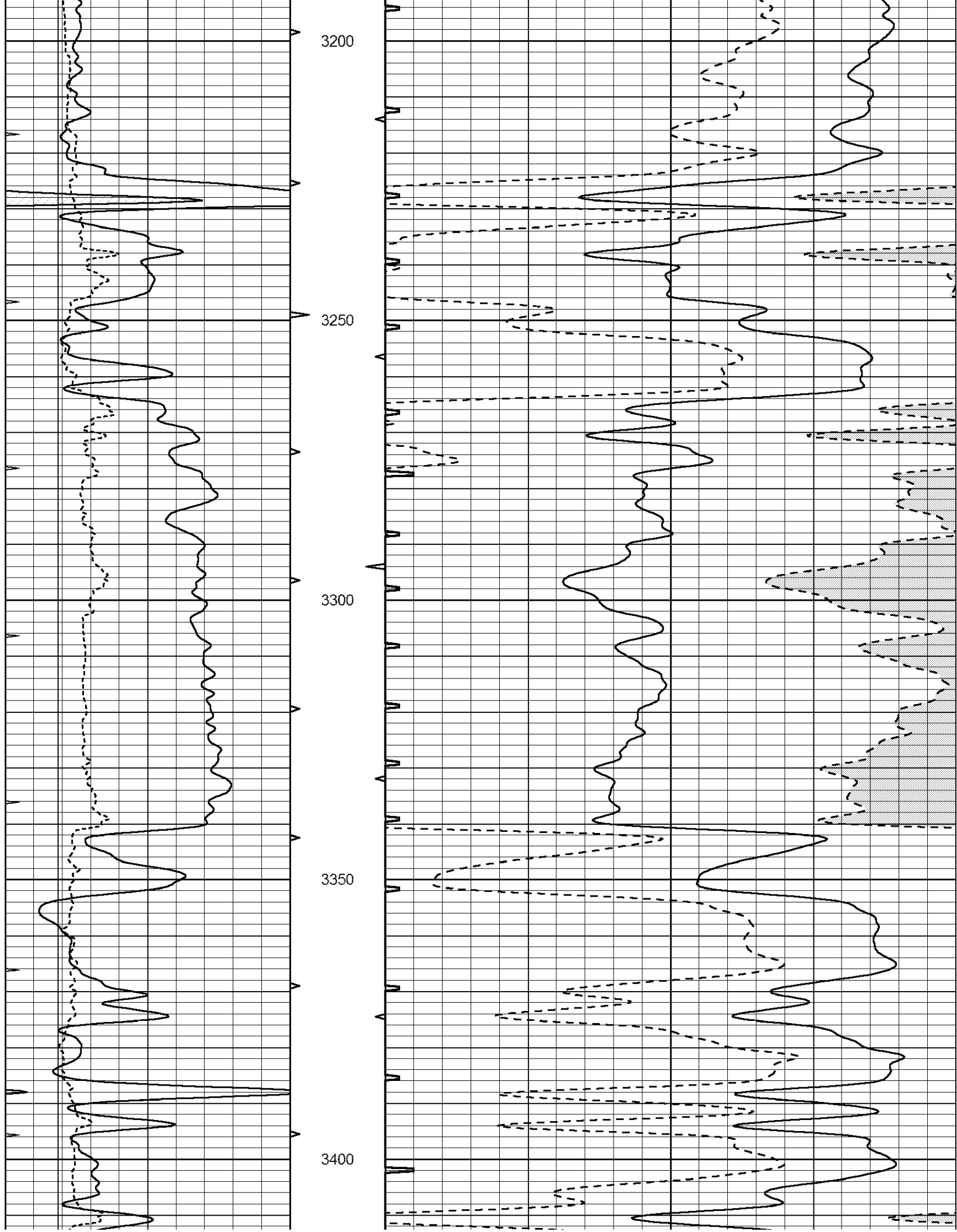


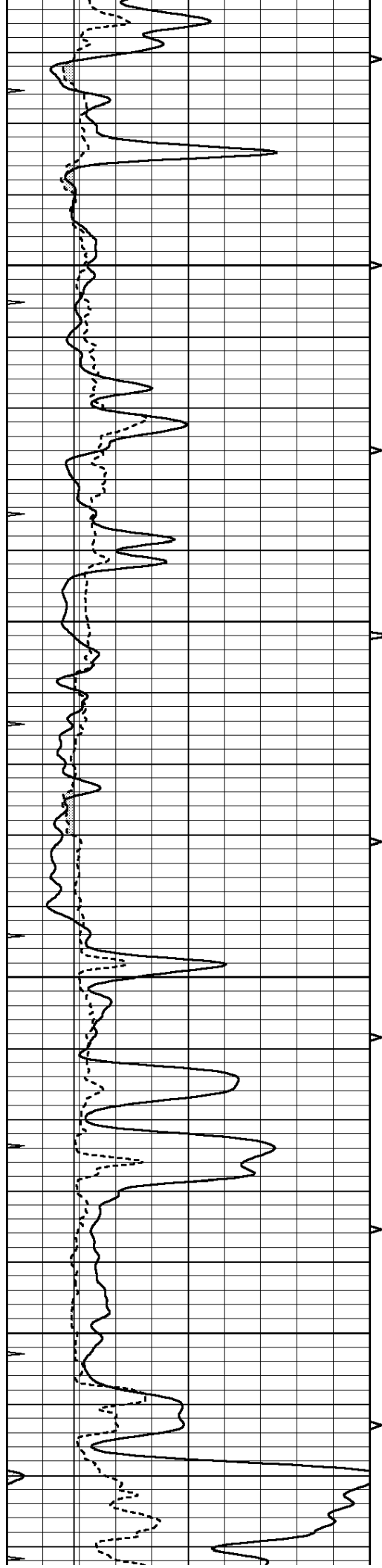










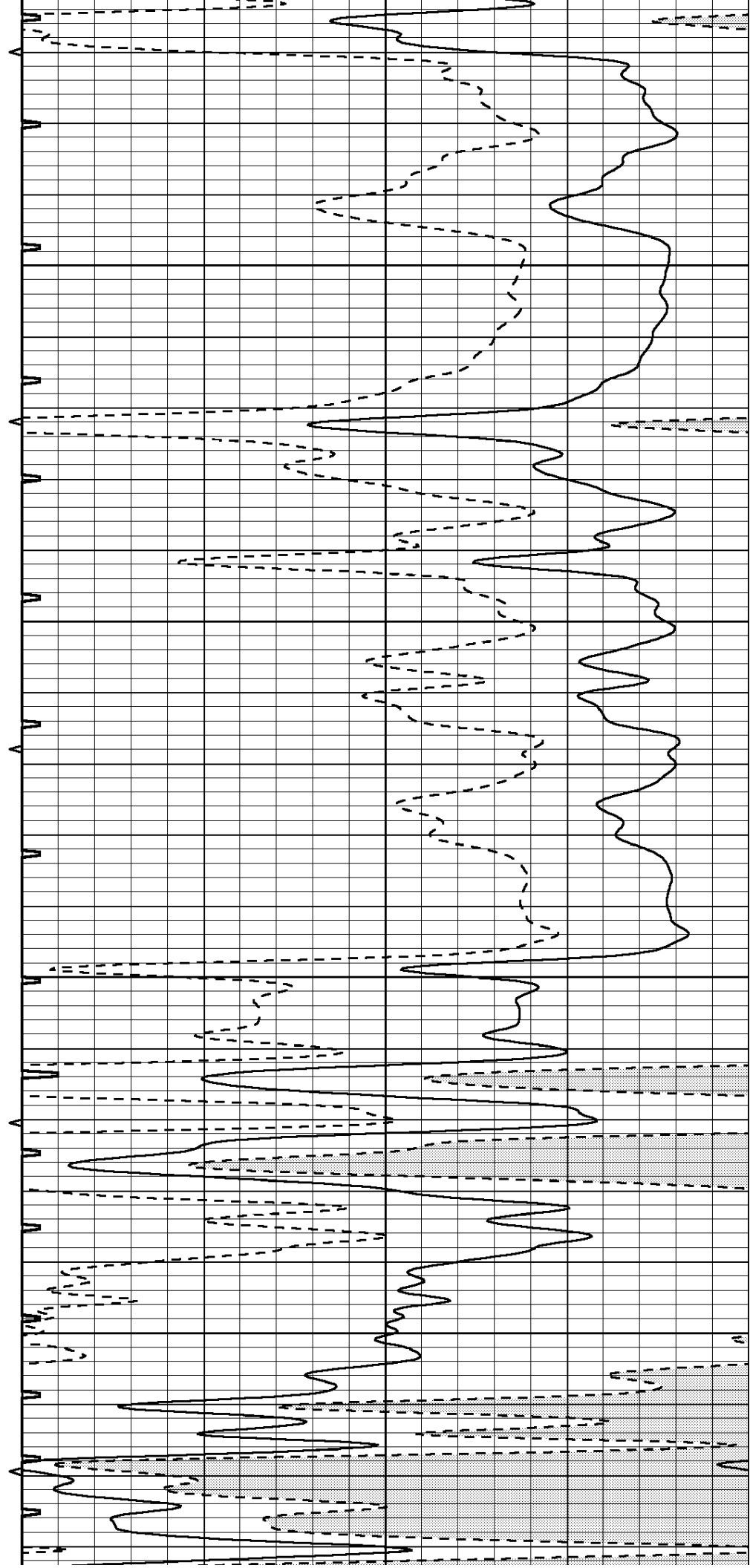


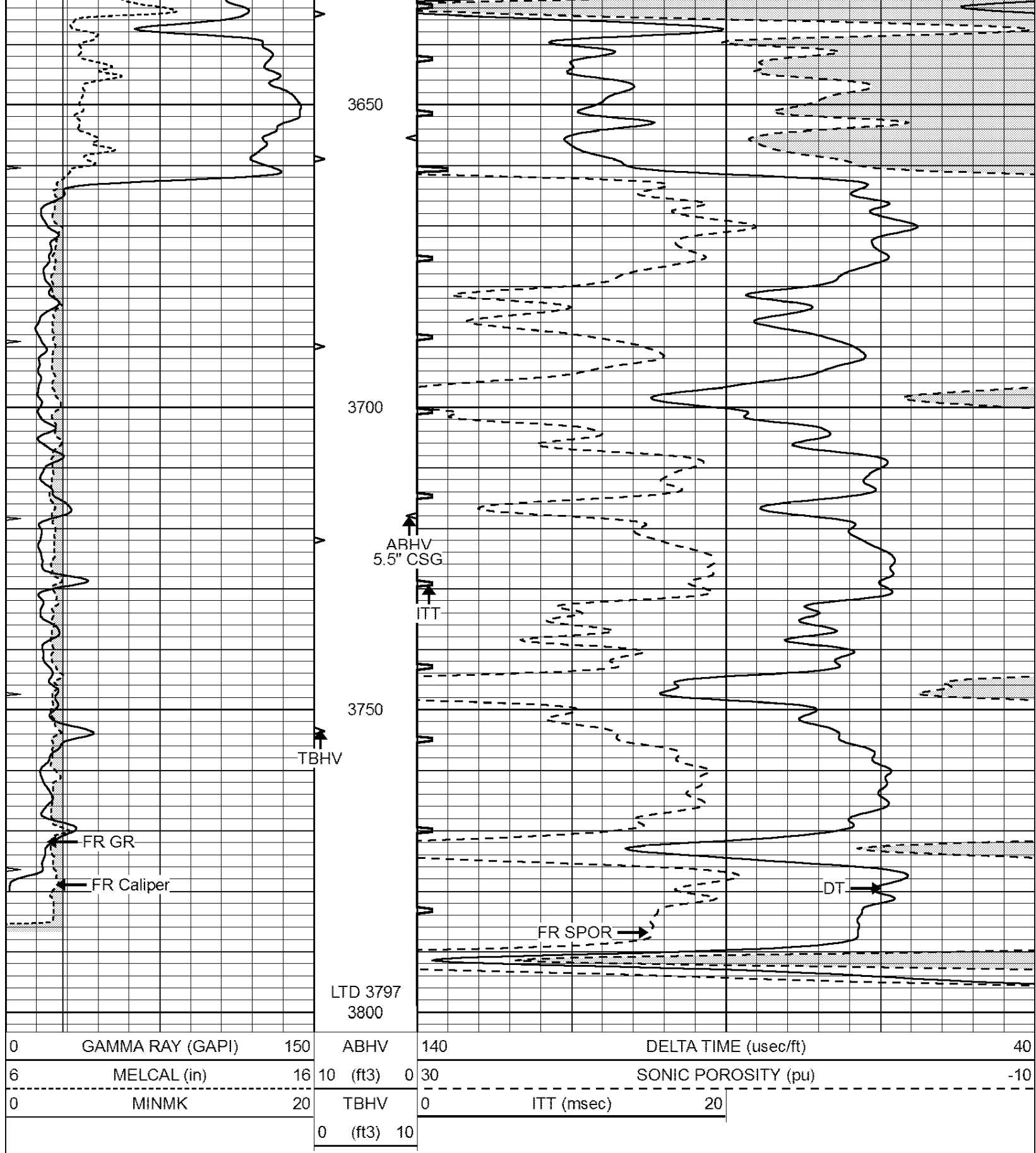
3450

3500

3550

3600





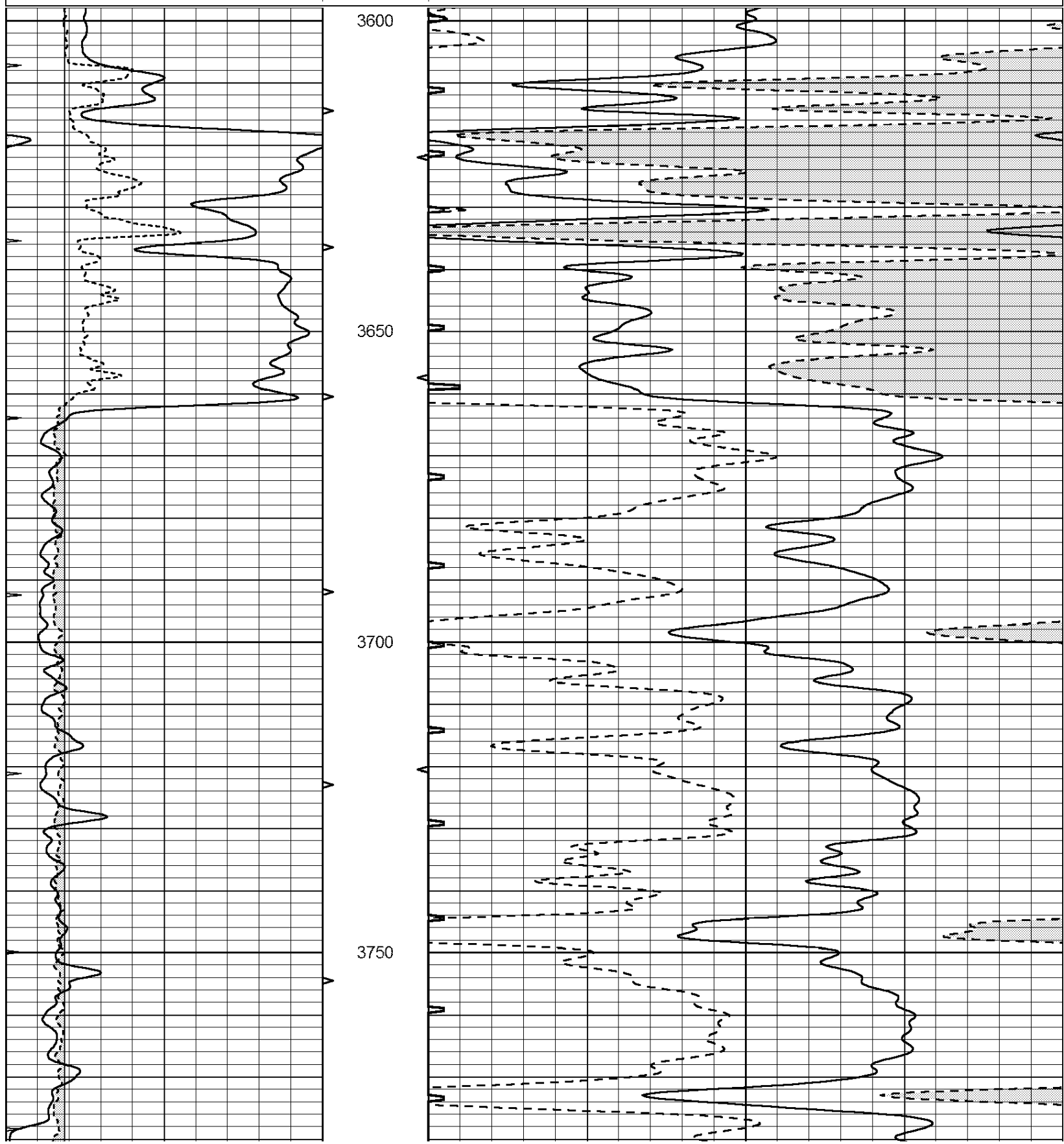
0	GAMMA RAY (GAPI)	150	ABHV	140	DELTA TIME (usec/ft)	40
6	MELCAL (in)	16	10 (ft3)	0 30	SONIC POROSITY (pu)	-10
0	MINMK	20	TBHV	0	ITT (msec)	20
			0 (ft3)	10		

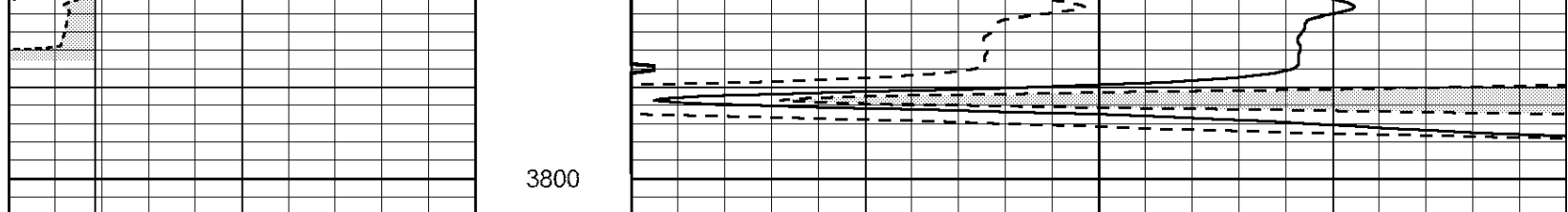


# REPEAT SECTION

Database File: 25819pe.db  
 Dataset Pathname: pass5.3  
 Presentation Format: \_slt  
 Dataset Creation: Sat Sep 20 17:46:14 2014  
 Charted by: Depth in Feet scaled 1:240

0	GAMMA RAY (GAPI)	150	ABHV	140	DELTA TIME (usec/ft)	40
6	MELCAL (in)	16	10 (ft3)	0 30	SONIC POROSITY (pu)	-10
0	MINMK	20	TBHV	0	ITT (msec)	20
			0 (ft3)	10		





3800

0	GAMMA RAY (GAPI)	150	ABHV	140	DELTA TIME (usec/ft)	40
6	MELCAL (in)	16	10 (ft3) 0	30	SONIC POROSITY (pu)	-10
0	MINMK	20	TBHV	0	ITT (msec)	20
			0 (ft3) 10			