



**MIDWEST SURVEYS**  
 LOGGING - PERFORATING - CONSULTING SERVICES  
 P.O. Box 69, Osawatomie, KS 66064  
 913 / 755 - 2128

**GAMMA RAY / NEUTRON / CCL**

File No. Company Blue Diamond Holdings, LLC  
 Well Batdorf No. BI-20  
 Field Paola - Rantoul  
 County Miami State Kansas

Location 3600 FSL & 1330 FEL  
 SE-NE-SW-NE  
 Other Services Perforate

Sec 2 Permament Datum Typ. 16s Ege. 21e  
 Log Measured From GL GL Elevation NA  
 Drilling Measured From GL GL K.B. NA  
 D.F. NA  
 G.L. NA

Date 07-28-2013  
 Run Number One  
 Depth Difer 784.0  
 Depth Logger 741.7  
 Bottom Logged Interval 740.7  
 Top Log Interval 20.0  
 Fluid Level Full

Type Fluid Water  
 Density / viscosity NA  
 Salinity - PPM Cl NA  
 Max Recorded Temp NA  
 Estimated Cement Top 0.0  
 Equipment No. 107 Location Osawatomie  
 Recorded By Steve Mandrich  
 Witnessed By Doug Evans

BORE-HOLE RECORD				CASING RECORD			
RUN	BIT	FROM	TO	SIZE	WGT.	FROM	TO
One	9.875"	0.0	21.0	7.00"	17.0#	0.0	21.0
Two	5.625"	21.0	794.0	2.875"	6.5#	0.0	777.0
						At	745.0

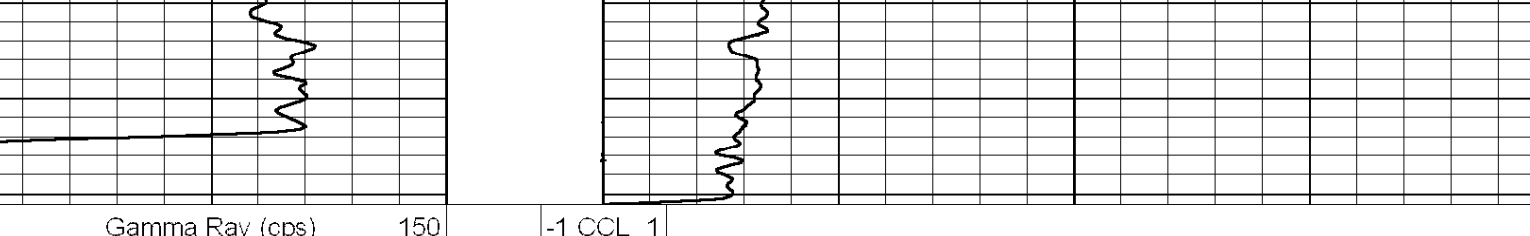
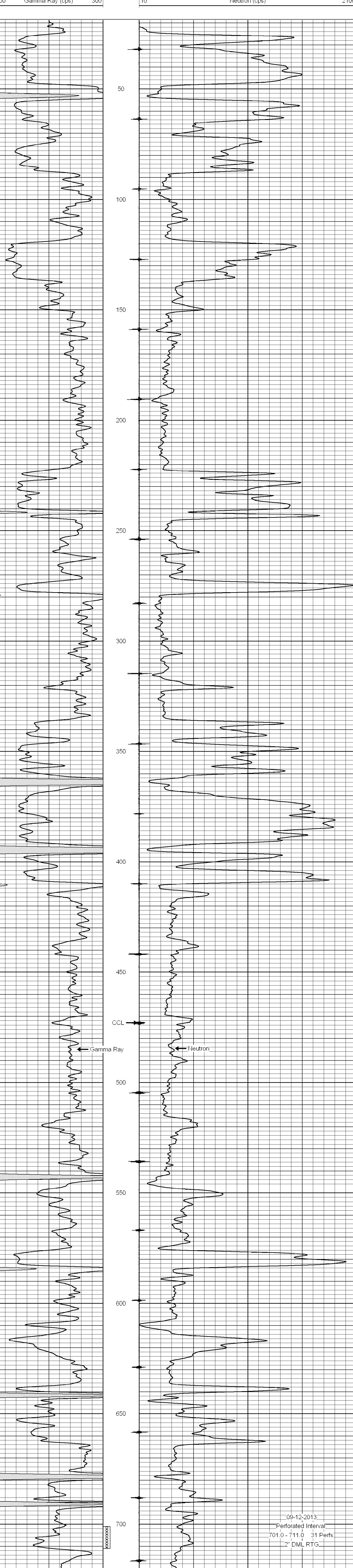
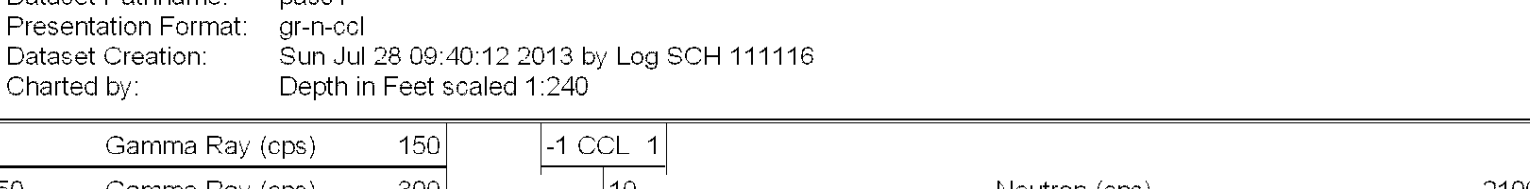
<<< Fold Here >>>

All interpretations are opinions based on inferences from electrical or other measurements and we cannot and do not guarantee the accuracy or correctness of any interpretation, and we shall not, except in the case of gross or willful negligence on our part, be liable or responsible for any loss, costs, damages, or expenses incurred or sustained by anyone resulting from any interpretation made by any of our officers, agents or employees. These interpretations are also subject to our general terms and conditions set out in our current Price Schedule.

Comments

Drilling Contractor :  
 Hat Drilling

Database File: batdorf20bi.db  
 Dataset Pathname: pass1  
 Presentation Format: gr-n-ccl  
 Dataset Creation: Sun Jul 28 09:40:12 2013 by Log SCH 111116  
 Charted by: Depth in Feet scaled 1:240



09-12-2013  
 Perforated Interval  
 701.0 - 711.0 31 Perfs  
 2" DML RTG