



MIDWEST SURVEYS
 LOGGING - PERFORATING - CONSULTING SERVICES
 P.O. Box 68, Osawatomie, KS 66064
 913 / 755 - 2128

GAMMA RAY / NEUTRON / CCL

File No. _____

Company Blue Diamond Holdings, LLC

Well Mosher No. BI-1

Field Paola - Rantoul

County Miami State Kansas

Location 4570' FSL & 4310' FEL
 NW-SE-NW-NW

Other Services Perforate

Sec. 1 Permament Datum
 Log Measured From Drilling Measured From

Date 09-13-2013
 Run Number One
 Depth Driller 755.0
 Depth Logger 716.8
 Bottom Logged Interval 715.8
 Top Log Interval 20.0
 Fluid Level Full

Type Fluid Water
 Density / Viscosity NA
 Salinity - PPM Cl NA
 Max. Recorded Temp NA
 Estimated Cement Top 0.0
 Equipment No. Location 107 Osawatomie
 Recorded By Steve Vandsich
 Witnessed By Doug Evans

BORE-HOLE RECORD				CASING RECORD			
RUN	BIT	FROM	TO	SIZE	WGHT	FROM	TO
One	9.875"	0.0	20.0	7.00"	17.0 #	0.0	20.0
Two	5.625"	20.0	755.0	2.875"	6.5 #	0.0	751.0
				Baffle	Set	At	719.0

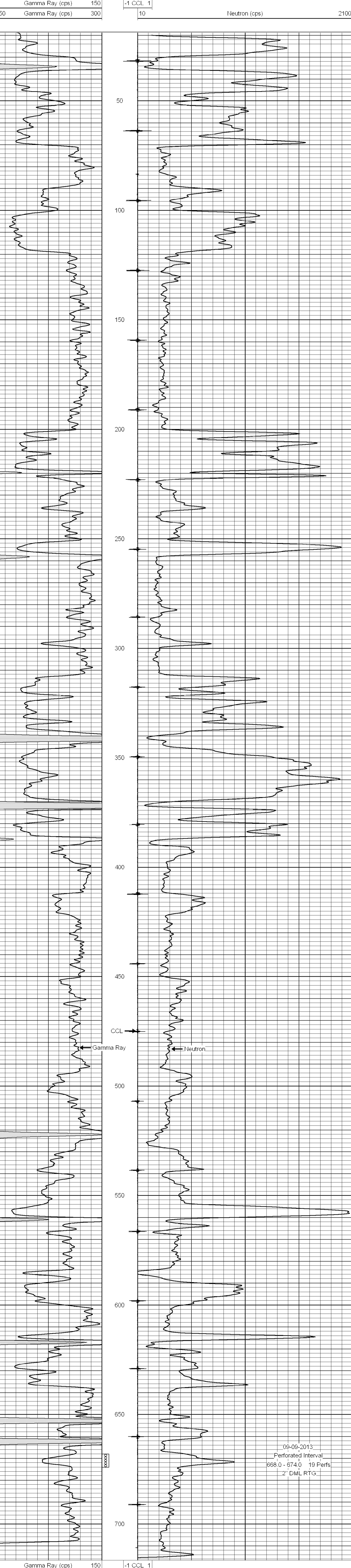
<<< Fold Here >>>

All interpretations are opinions based on inferences from electrical or other measurements and we cannot and do not guarantee the accuracy or correctness of any interpretation, and we shall not, except in the case of gross or willful negligence on our part, be liable or responsible for any loss, costs, damages, or expenses incurred or sustained by anyone resulting from any interpretation made by any of our officers, agents or employees. These interpretations are also subject to our general terms and conditions set out in our current Price Schedule.

Comments

Drilling Contractor :
 Hat Drilling

Database File: mosher1bi.db
 Dataset Pathname: pass1
 Presentation Format: gr-n-ccl
 Dataset Creation: Tue Aug 13 09:35:49 2013 by Log SCH 111116
 Charted by: Depth in Feet scaled 1:240



0 150 300 Gamma Ray (cps)

10 2100 Neutron (cps)