



Pioneer Energy Services

Dual Induction Log

15-135-25,632-00-00

API No.

Company **Robert F. Hembree**

Well **Petersilie #4**

Field **Petersilie Northeast Pool**

County **Ness** State **Kansas**

Location **1,297' FSL & 828' FEL**

Sec: **12** Twp: **20S** Rge: **24W**

Permanent Datum **Ground Level** Elevation **2322**

Log Measured From **Kelly Bushing** 7 Ft. Above Perm. Datum

Drilling Measured From **Kelly Bushing**

Other Services
CNL/CDL
MEL

Elevation

K.B. 2329
D.F.
G.L. 2322

Date **8/8/2013**

Run Number **One**

Depth Driller **4486**

Depth Logger **4484**

Bottom Logged Interval **4483**

Top Log Interval **200**

Casing Driller **8.625 @ 221**

Casing Logger **217**

Bit Size **7.875**

Type Fluid in Hole **Chemical**

Salinity,ppm CL **5000**

Density / Viscosity **9.1 44**

pH / Fluid Loss **8.5 10.8**

Source of Sample **Flowline**

Rm @ Meas. Temp **.42 @ 82**

Rmf @ Meas. Temp **.32 @ 82**

Rmc @ Meas. Temp **.57 @ 82**

Source of Rmf / Rmc **Charts**

Rm @ BHT **.28 @ 121**

Operating Rig Time **4 1/2 Hours**

Max Rec. Temp. F **121**

Equipment Number **108**

Location **Hays**

Recorded By **J. Long**

Witnessed By **Keith Reavis**

<<< Fold Here >>>

All interpretations are opinions based on inferences from electrical or other measurements and we cannot and do not guarantee the accuracy or correctness of any interpretation, and we shall not, except in the case of gross or willful negligence on our part, be liable or responsible for any loss, costs, damages, or expenses incurred or sustained by anyone resulting from any interpretation made by any of our officers, agents or employees. These interpretations are also subject to our general terms and conditions set out in our current Price Schedule.

Comments

Thank you for using Pioneer Energy Services
www.pioneerres.com
785 625 3858

Ness City, 9 South to 40 Road, 1 West, 1/4 North, West Into

Database File: c:\warrior\data\hembree_petersilie # 4\hem.db
Dataset Pathname: dil/hembstck
Presentation Format: dil2in
Dataset Creation: Thu Aug 08 18:46:57 2013
Charted by: Depth in Feet scaled 1:600

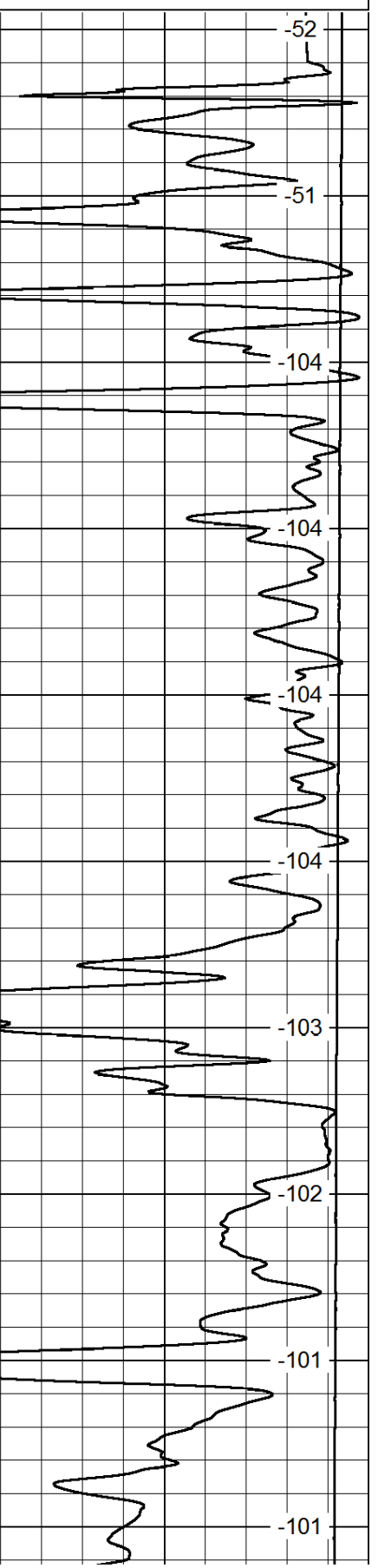
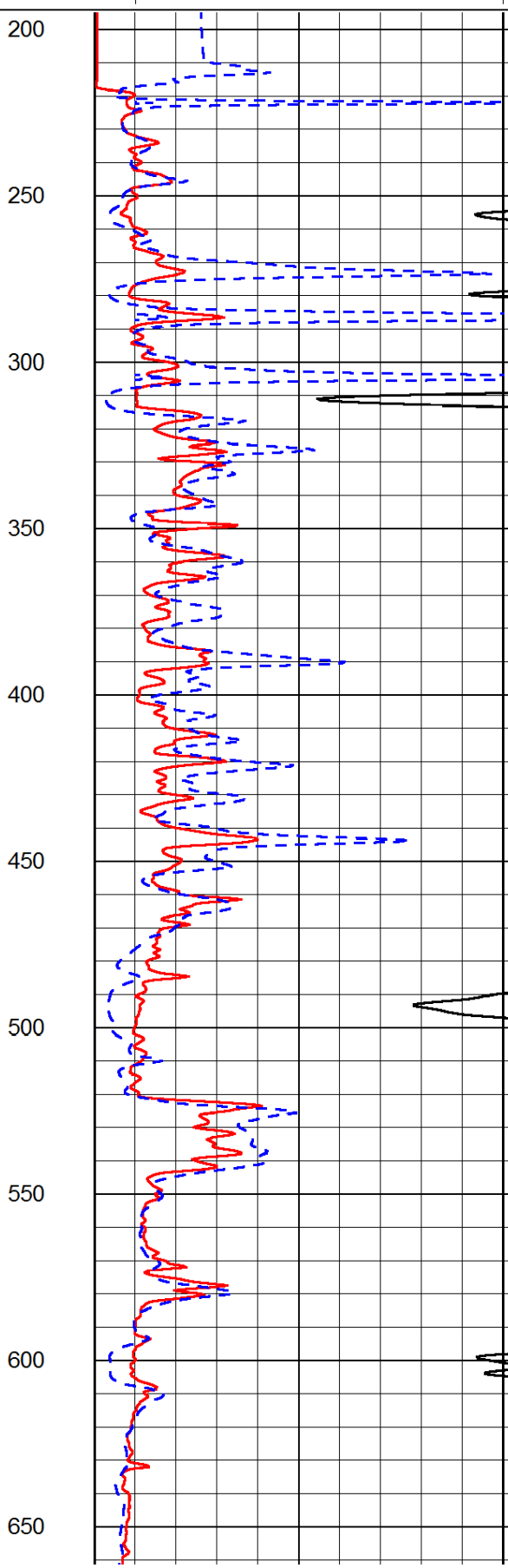
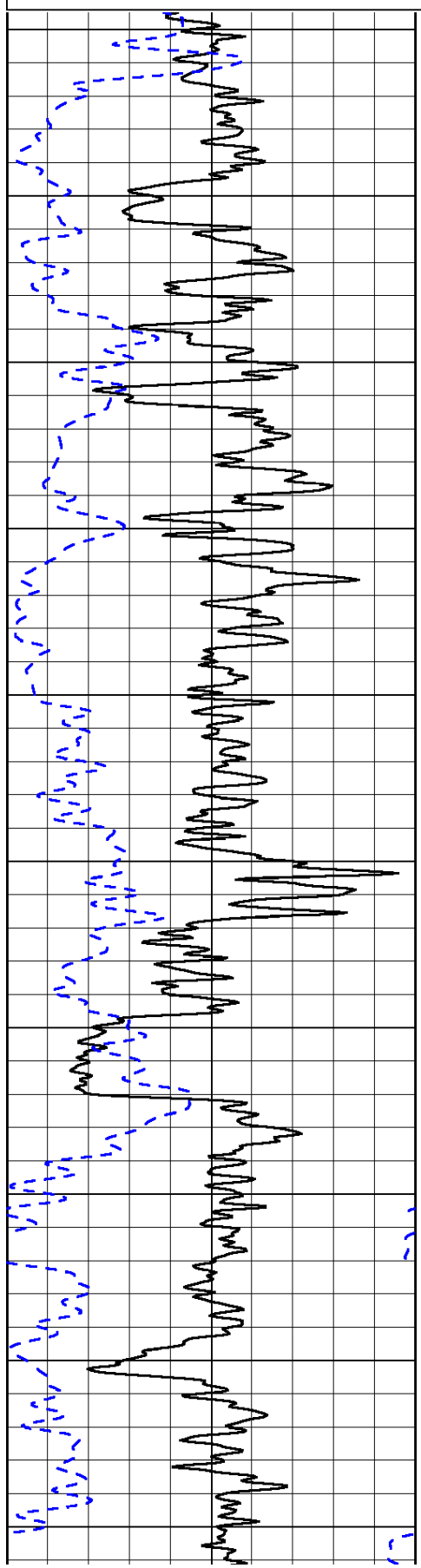
0	Gamma Ray	150
-200	SP (mV)	0

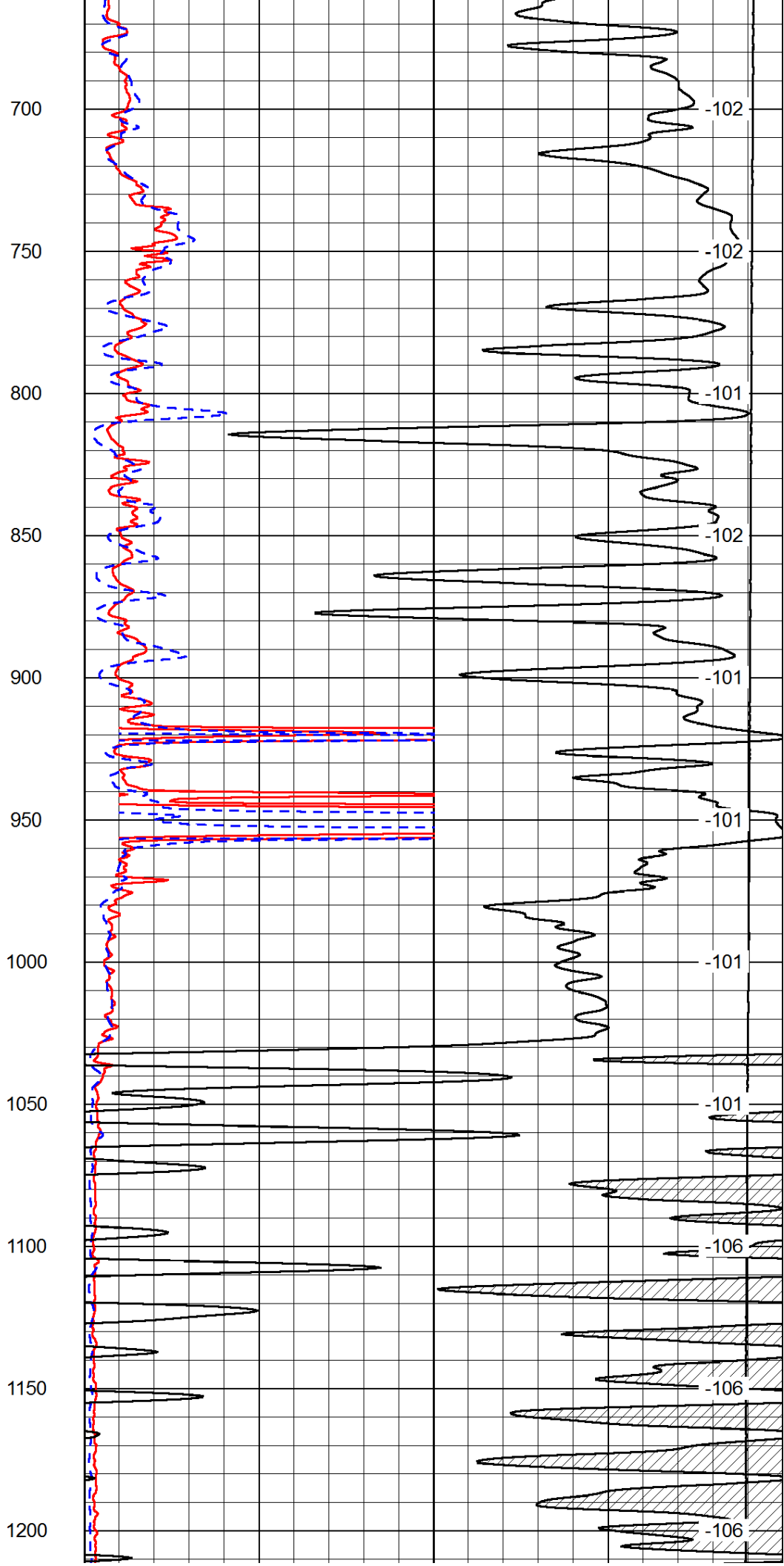
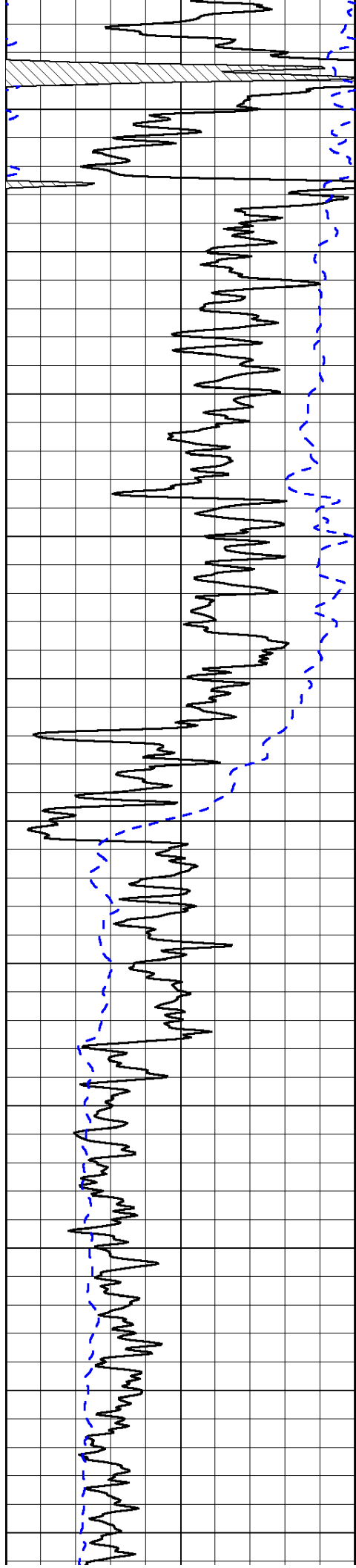
0	Shallow Resistivity	50
0	Deep Resistivity	50

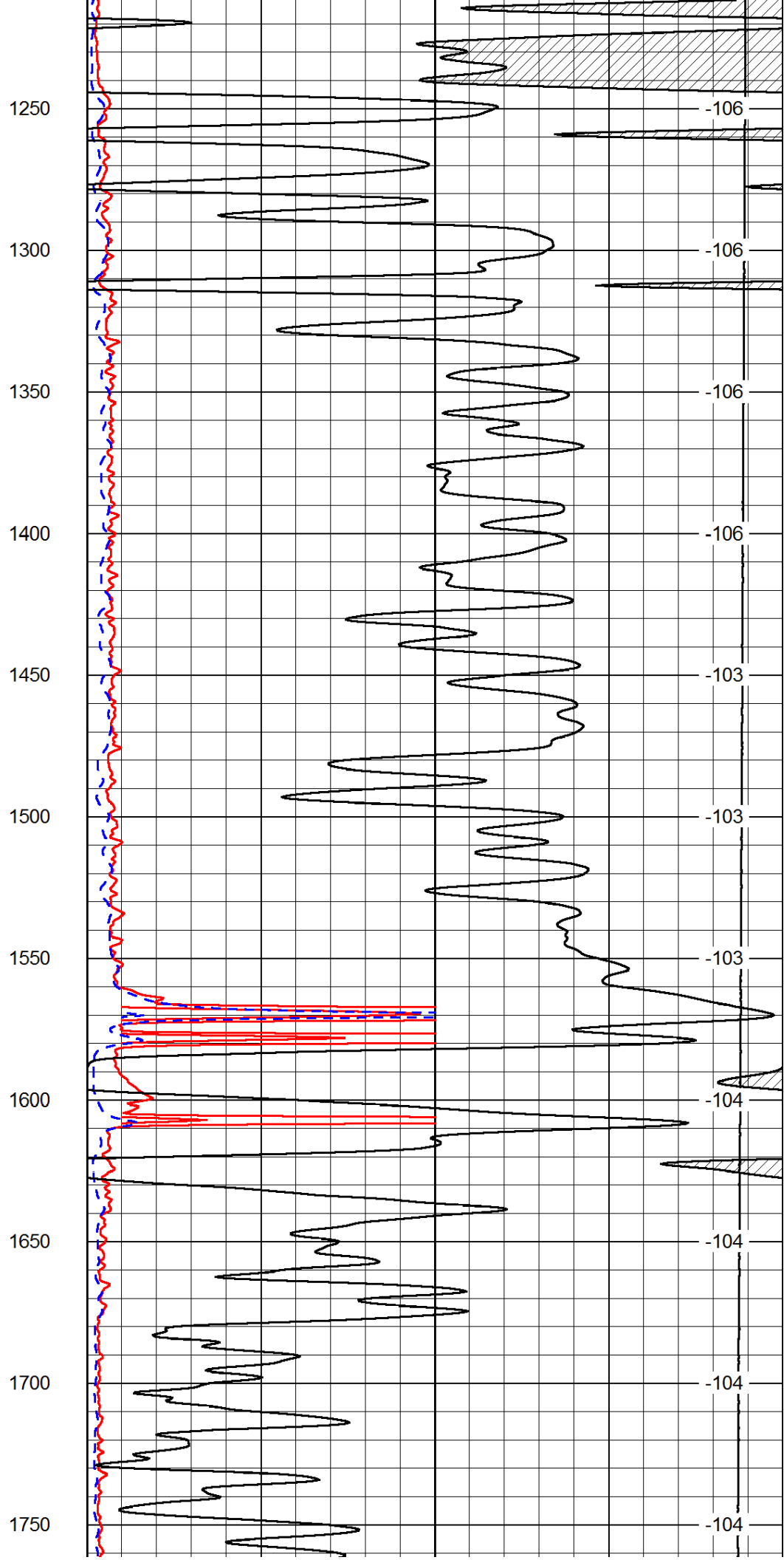
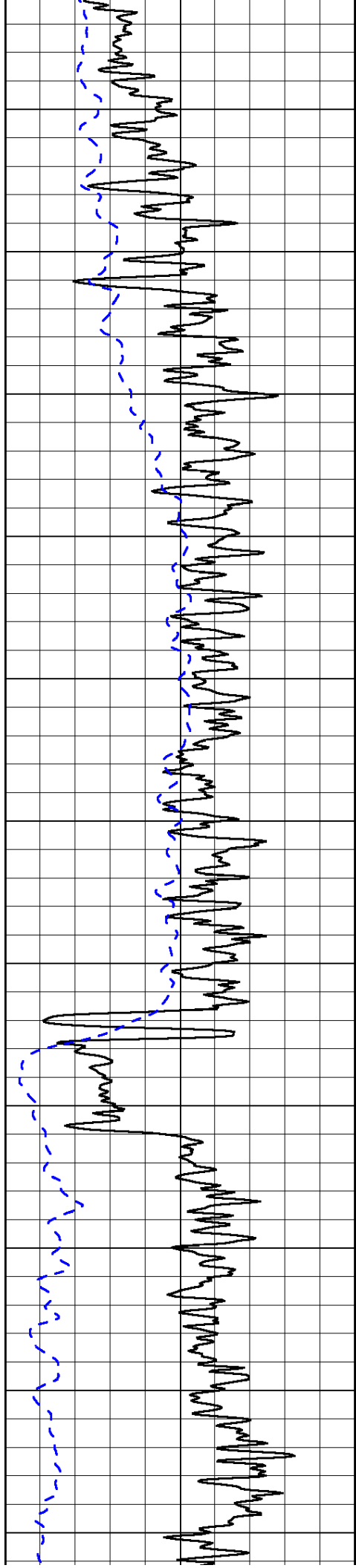
LSPD

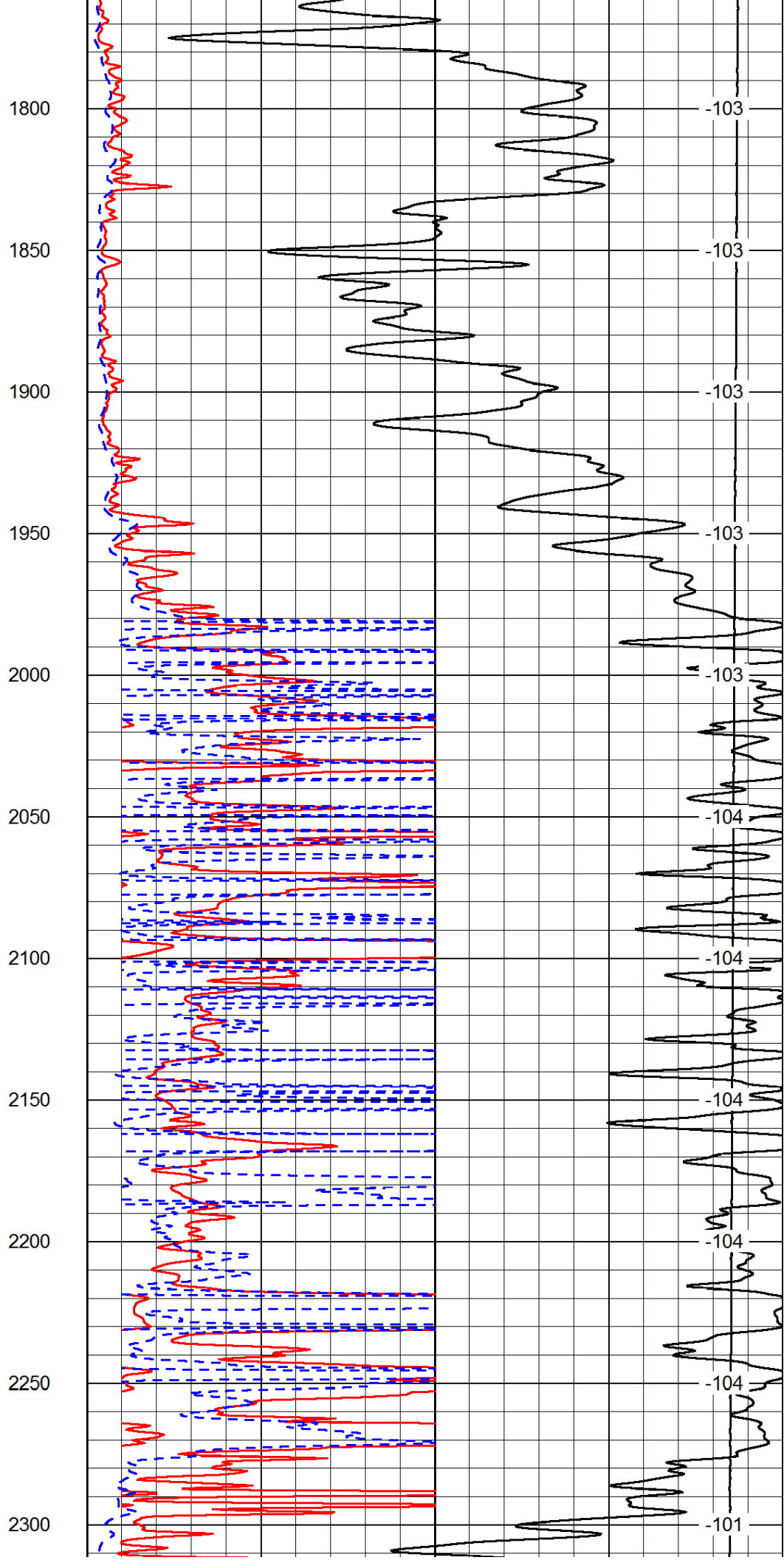
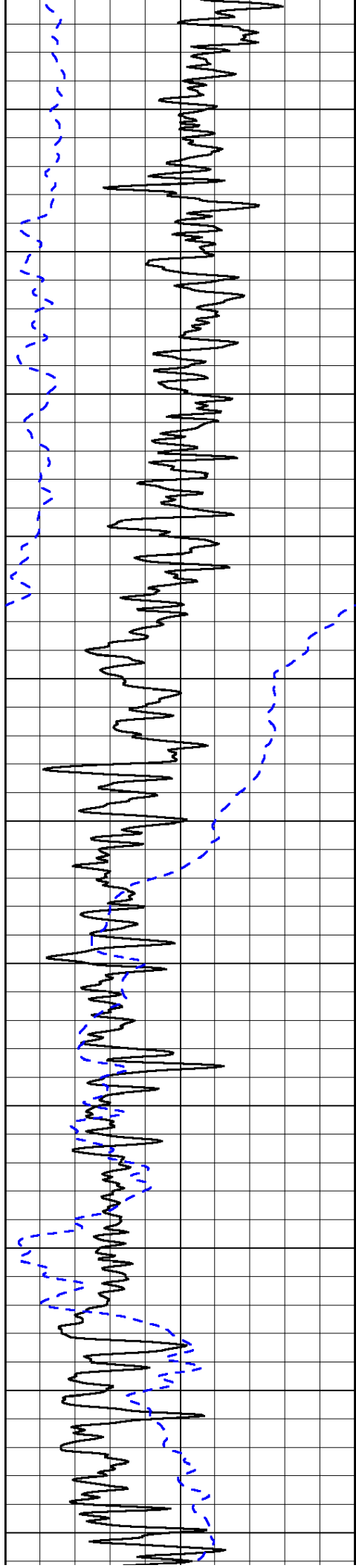
1000	Conductivity	0
15000	Line Tension	0

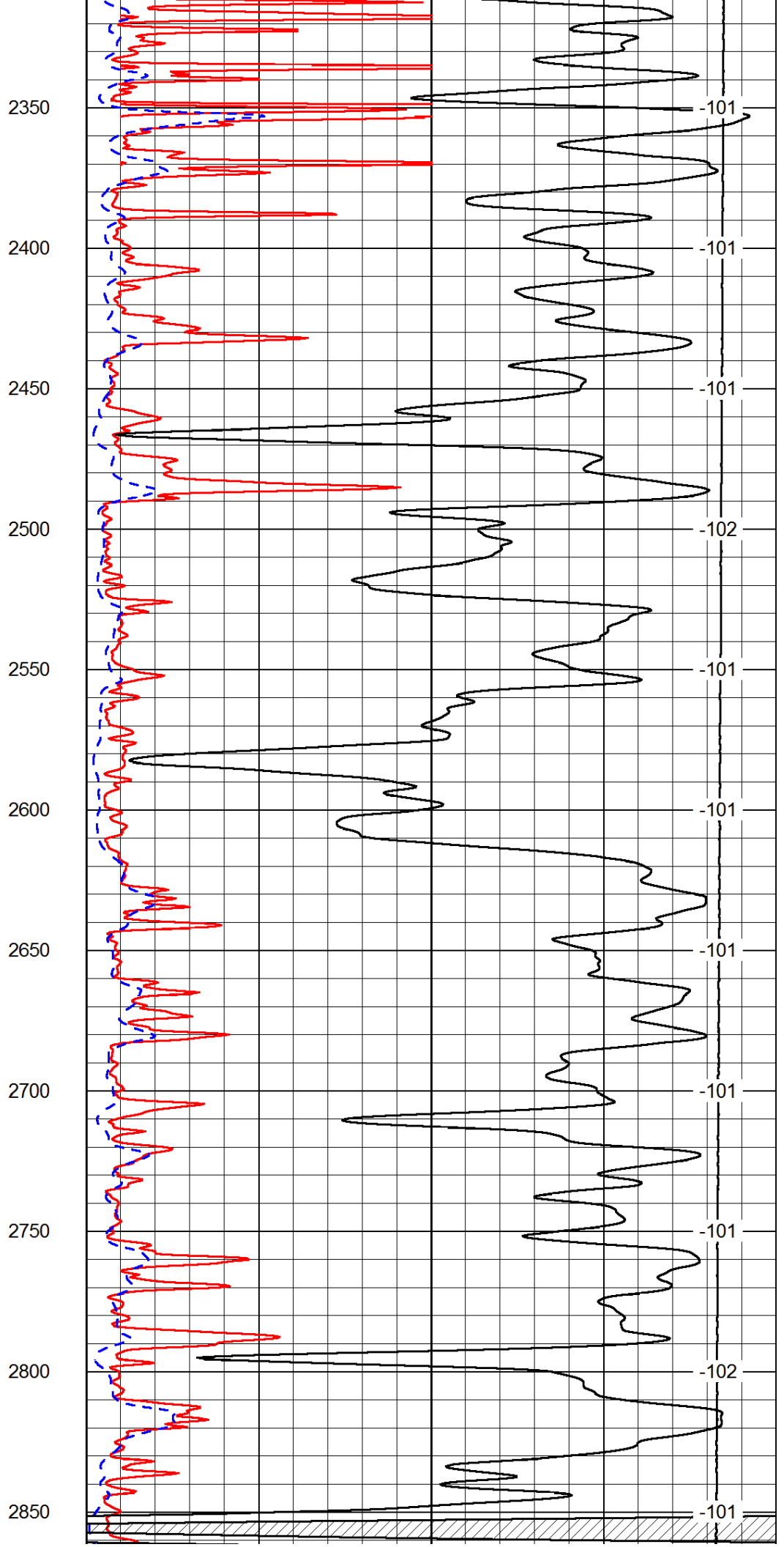
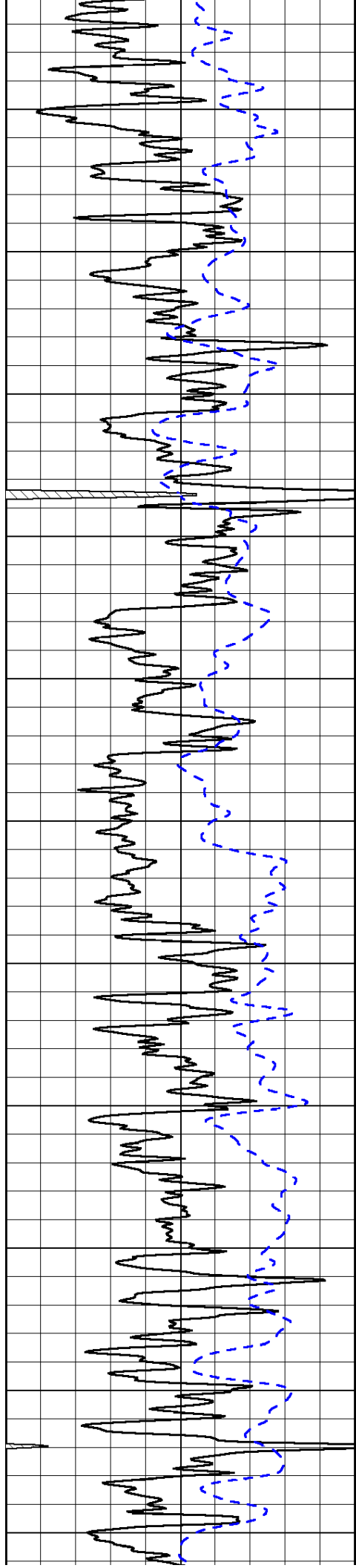
50	Shallow Resistivity	500
50	Deep Resistivity	500

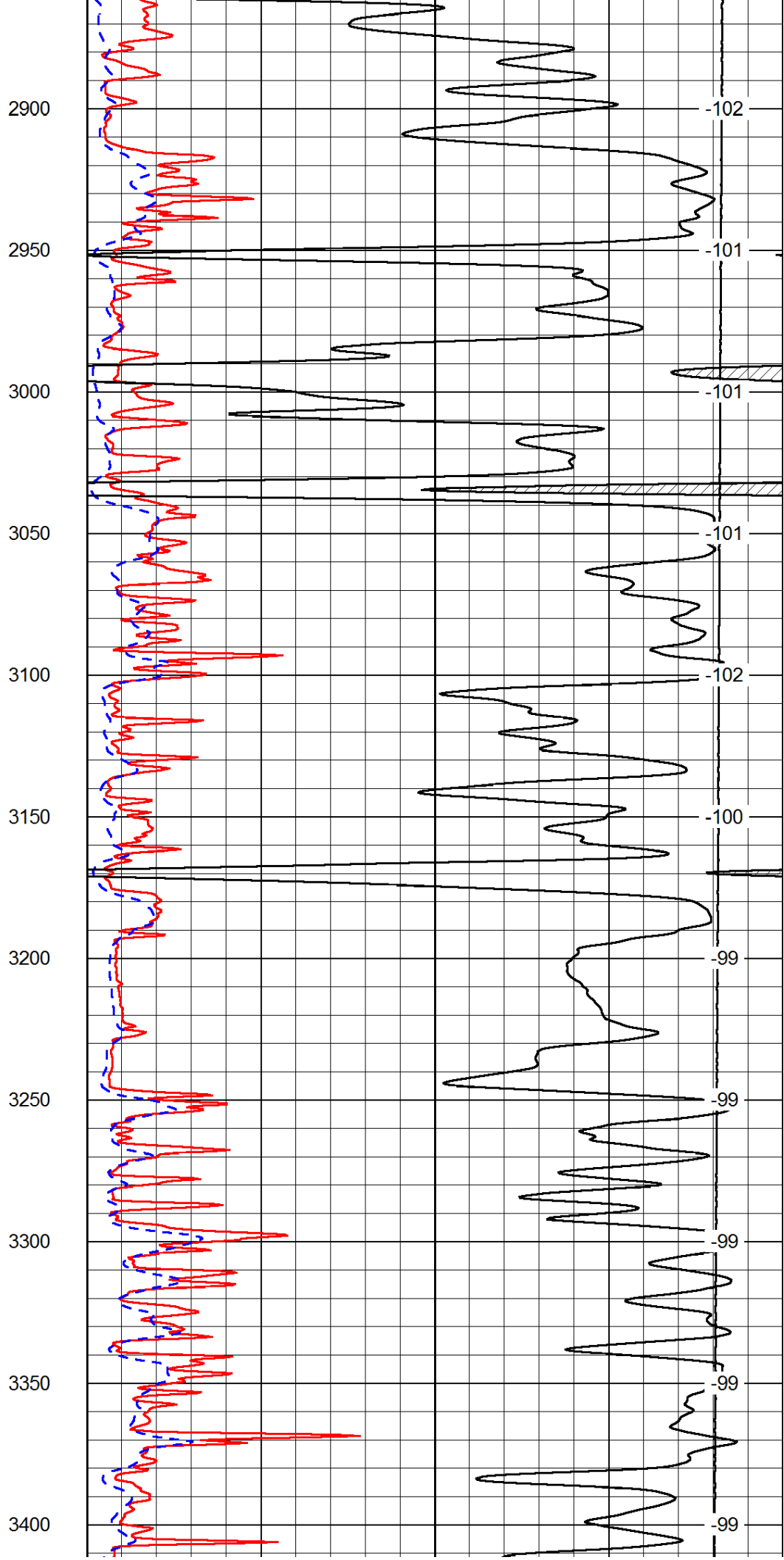
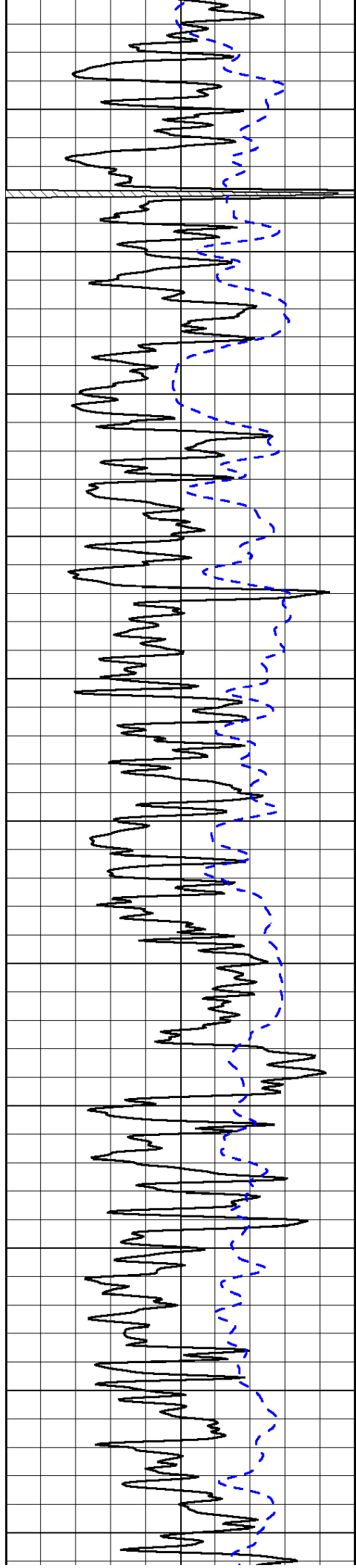


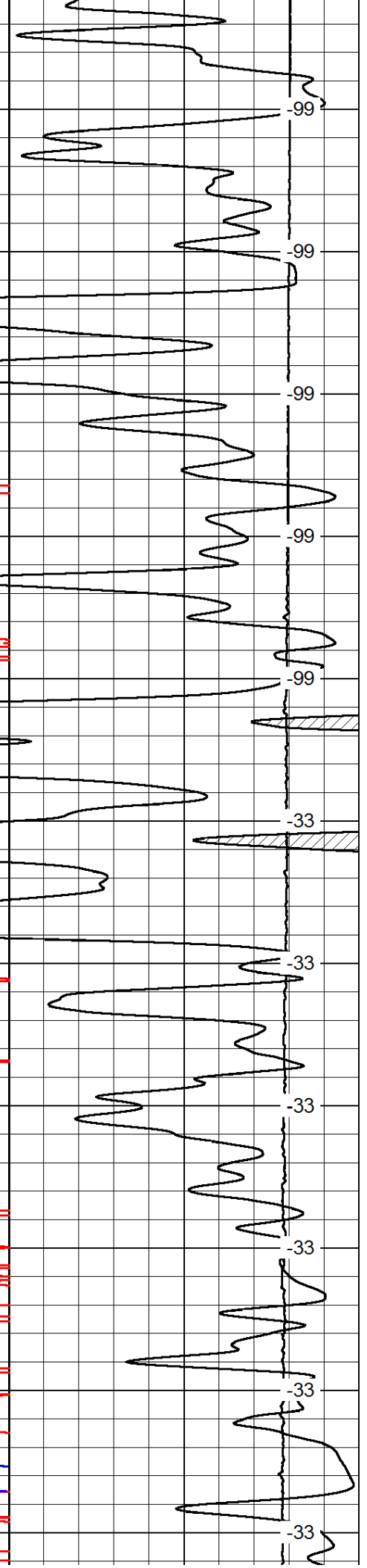
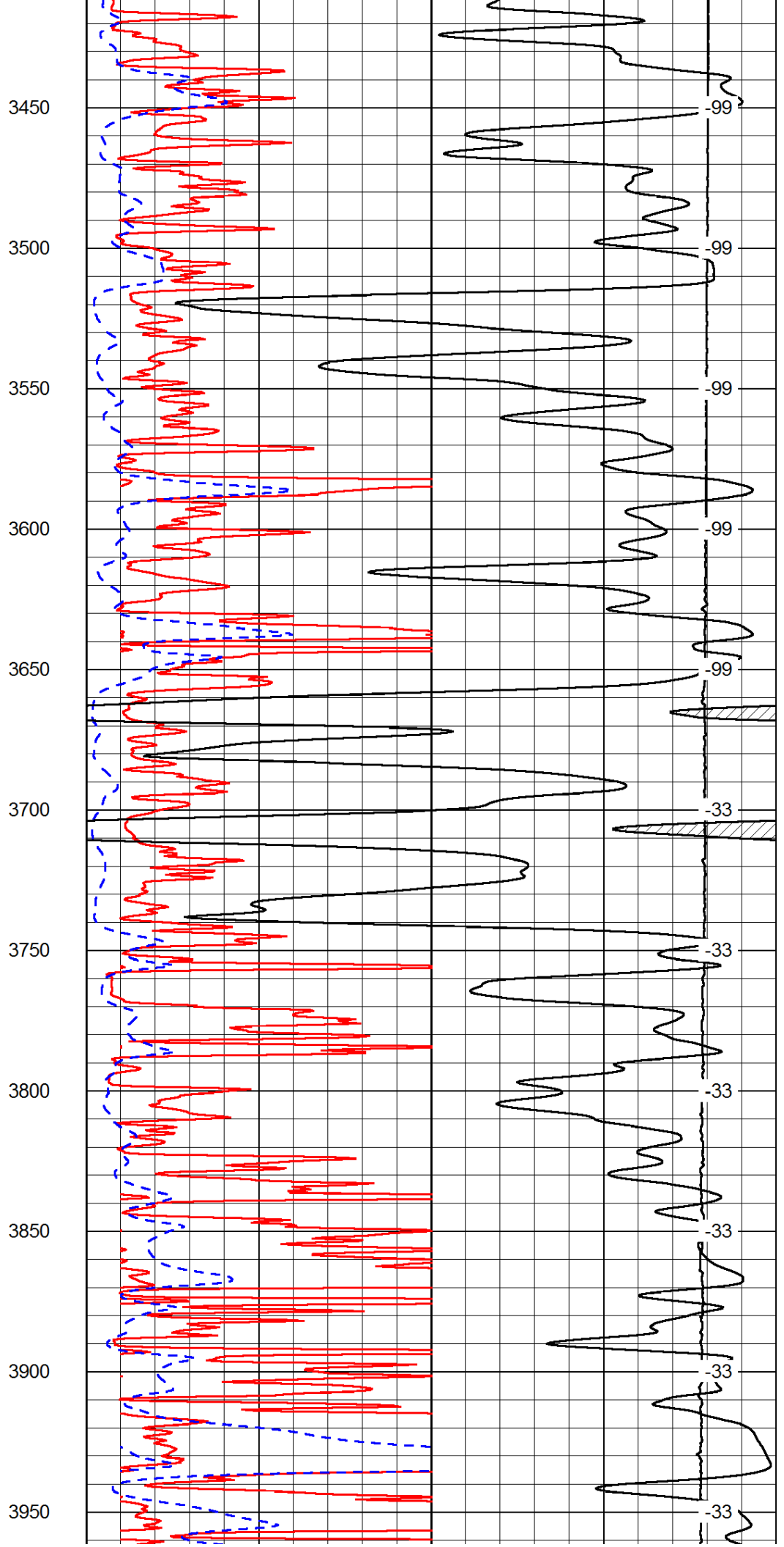
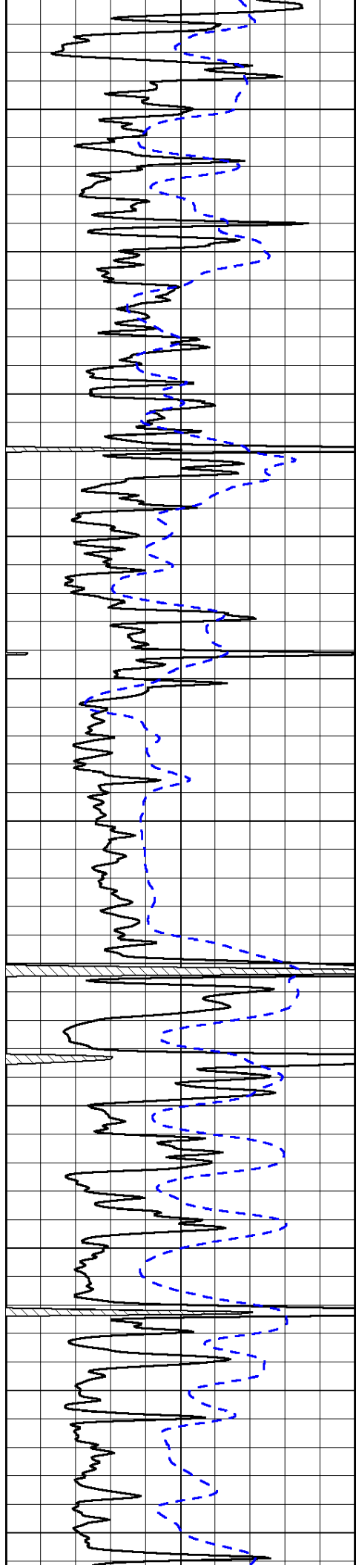


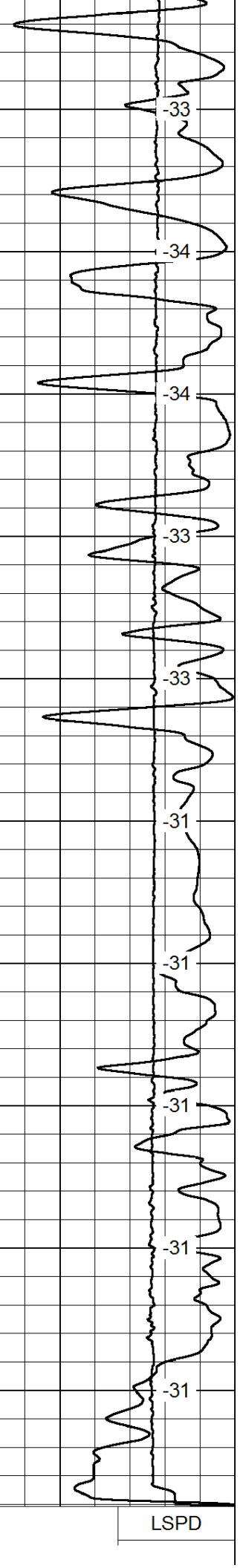
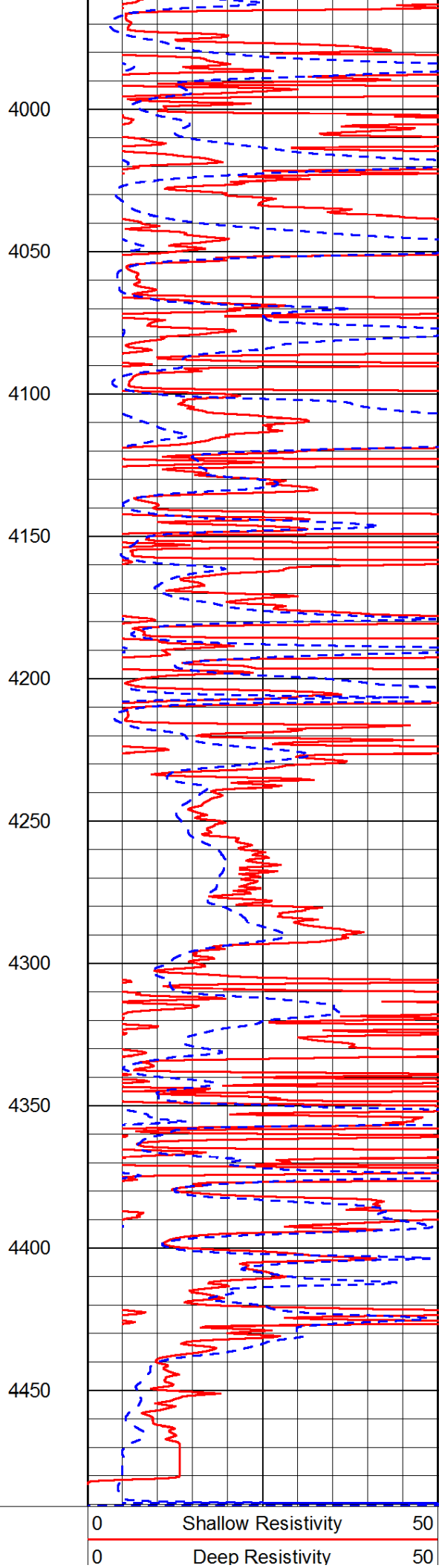
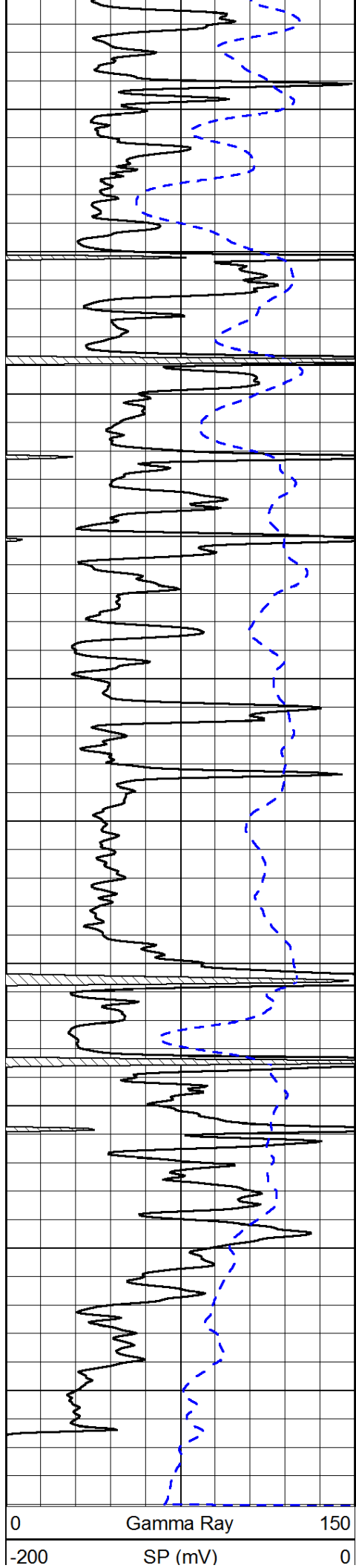










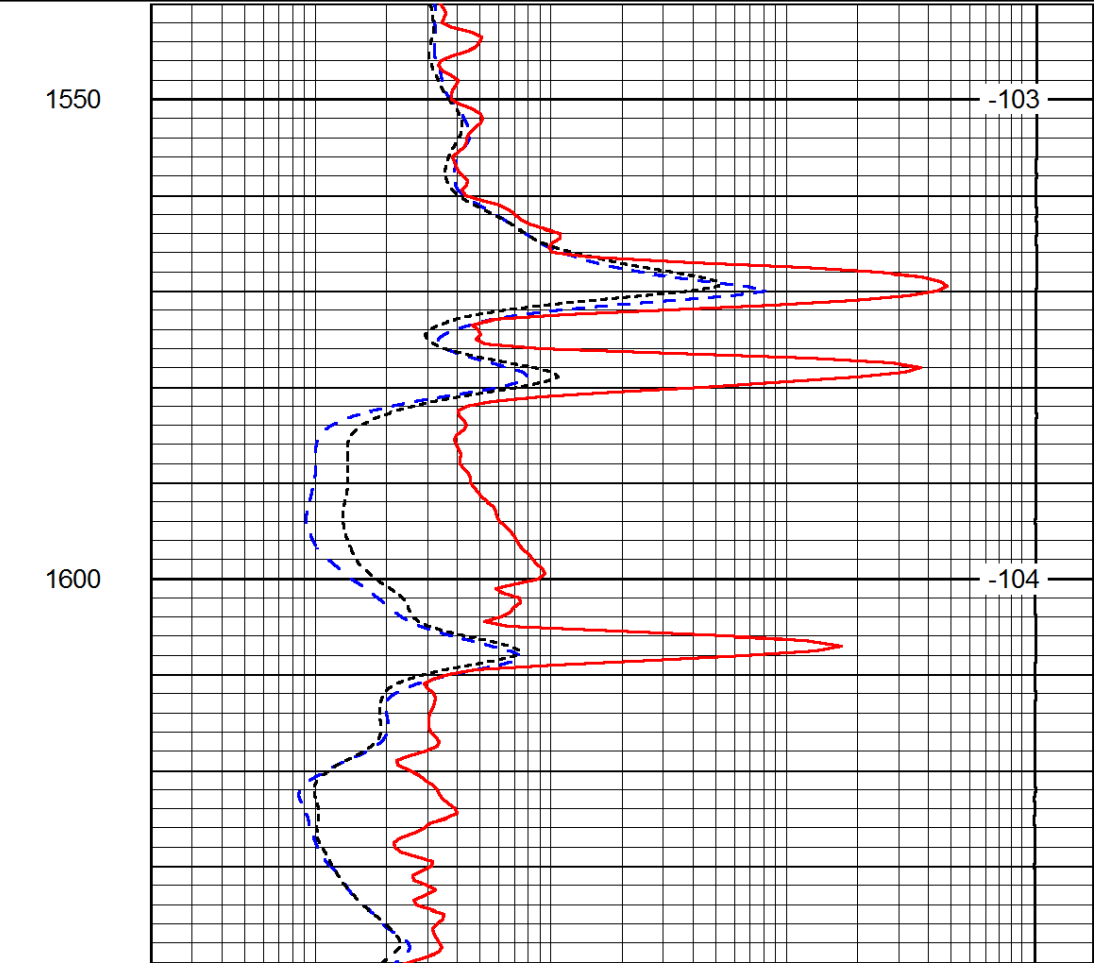
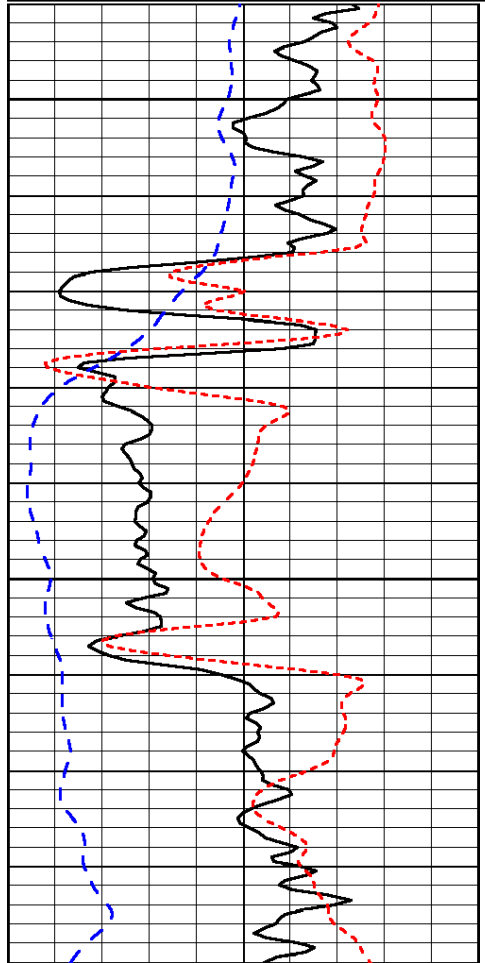


1000	Conductivity	0
15000	Line Tension	0
50	Shallow Resistivity	500
50	Deep Resistivity	500

Database File: c:\warrior\data\hembree_petersilie # 4\hem.db
 Dataset Pathname: dil/hembstck
 Presentation Format: dil
 Dataset Creation: Thu Aug 08 18:46:57 2013
 Charted by: Depth in Feet scaled 1:240

0	Gamma Ray	150	0.2	Deep Resistivity	2000
-200	SP (mV)	0	0.2	Medium Resistivity	2000
-160	RxoRt	40	0.2	Shallow Resistivity	2000
			15000	Line Tension	0

LSPD



0	Gamma Ray	150	0.2	Deep Resistivity	2000
-200	SP (mV)	0	0.2	Medium Resistivity	2000
-160	RxoRt	40	0.2	Shallow Resistivity	2000
			15000	Line Tension	0

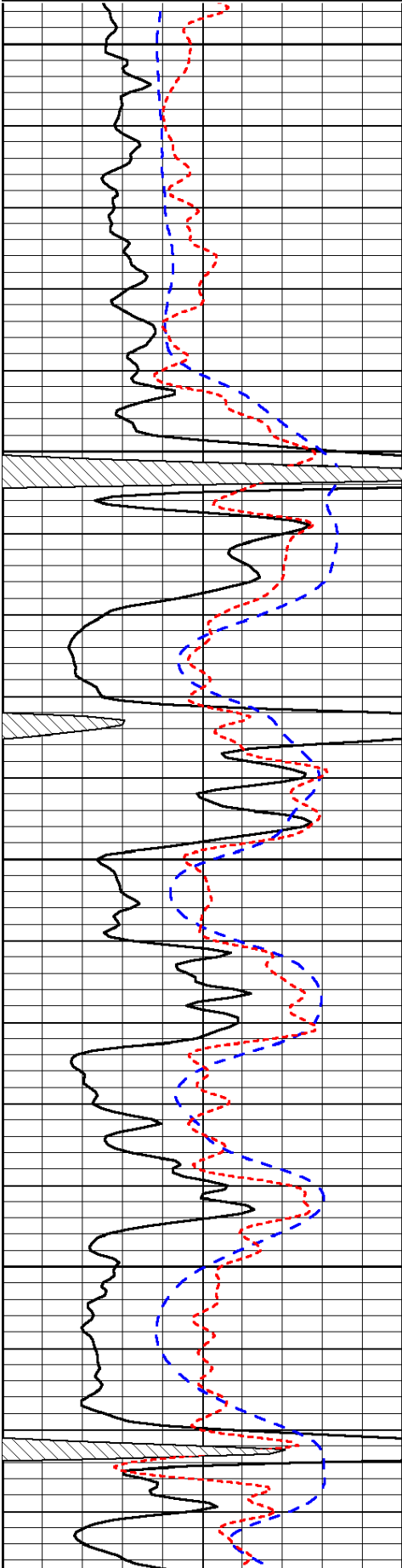
LSPD

Database File: c:\warrior\data\hembree_petersilie # 4\hem.db
 Dataset Pathname: dil/hembstck
 Presentation Format: dil
 Dataset Creation: Thu Aug 08 18:46:57 2013
 Charted by: Depth in Feet scaled 1:240

0	Gamma Ray	150
-200	SP (mV)	0
-160	RxoRt	40

0.2	Deep Resistivity	2000
0.2	Medium Resistivity	2000
0.2	Shallow Resistivity	2000
15000	Line Tension	0

LSPD

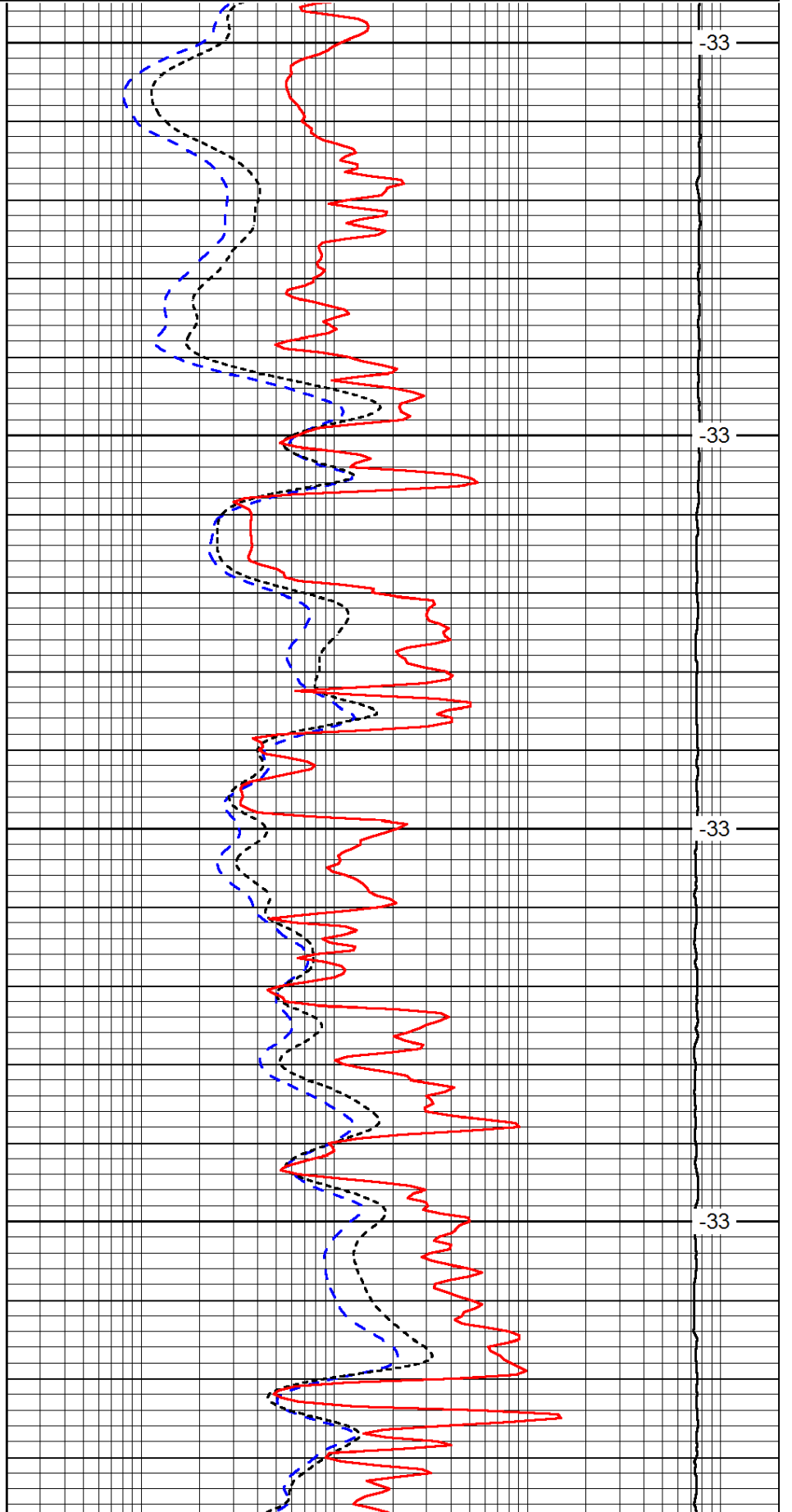


3700

3750

3800

3850

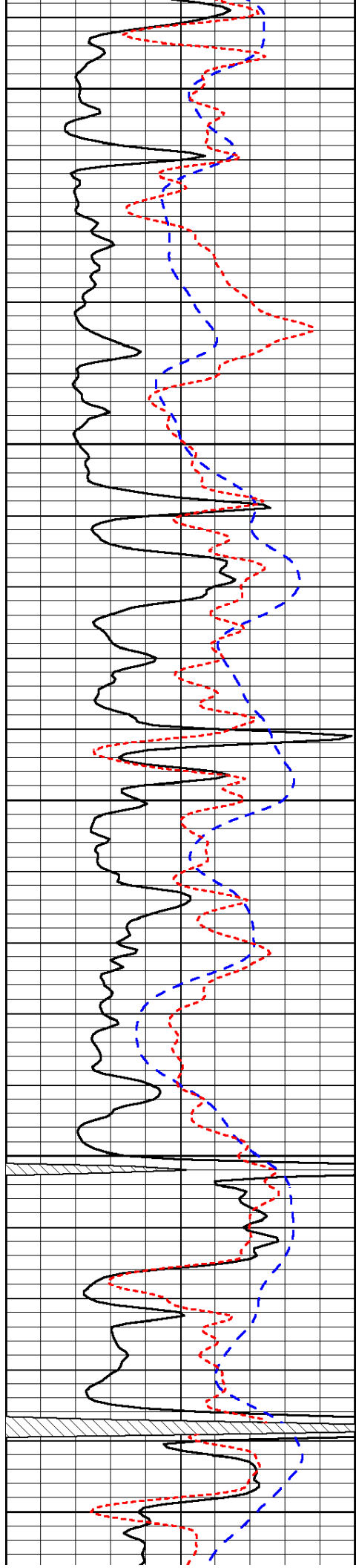


-33

-33

-33

-33



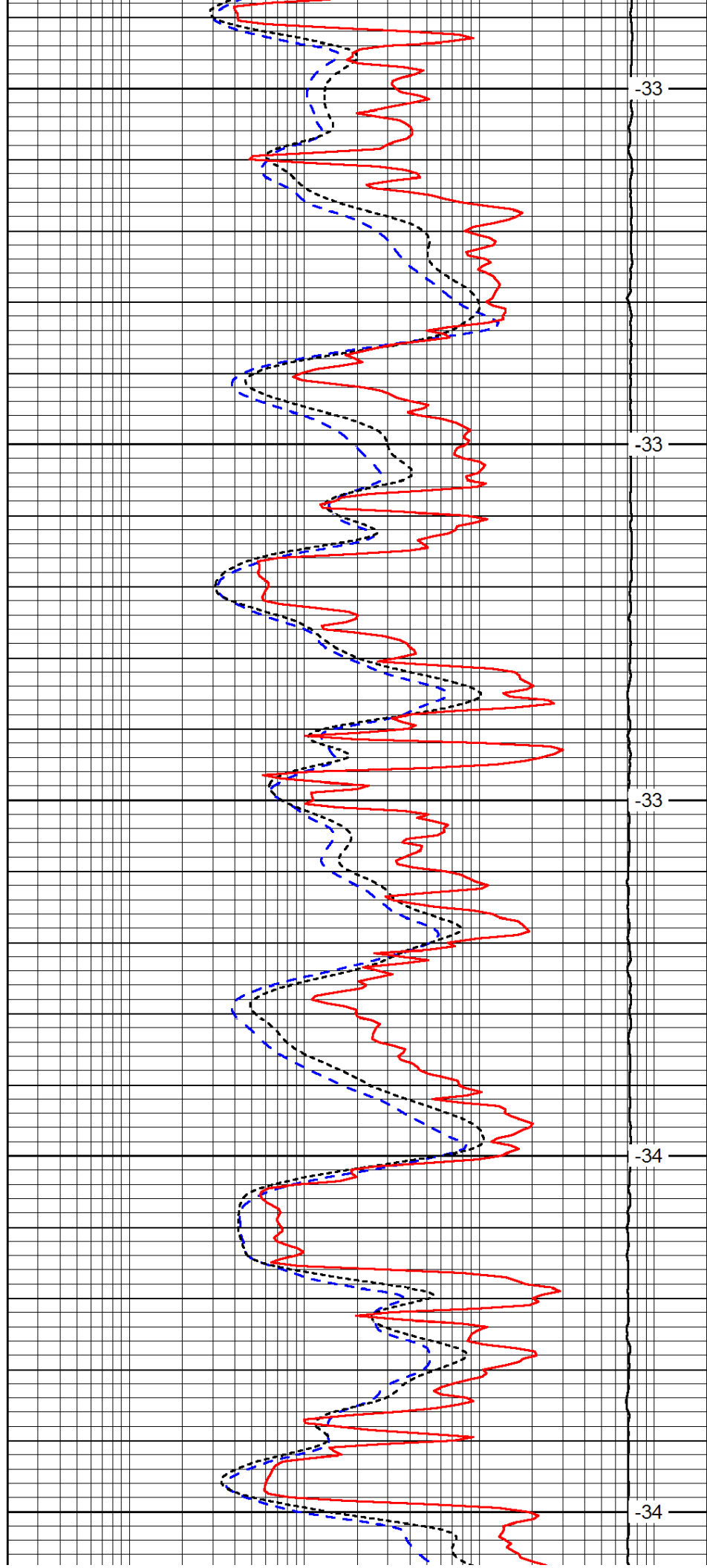
3900

3950

4000

4050

4100



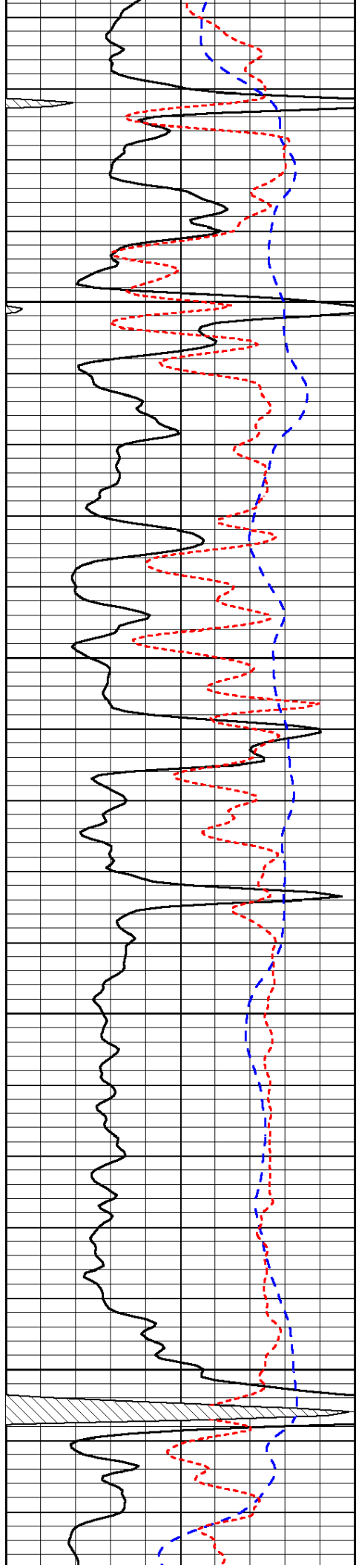
-33

-33

-33

-34

-34

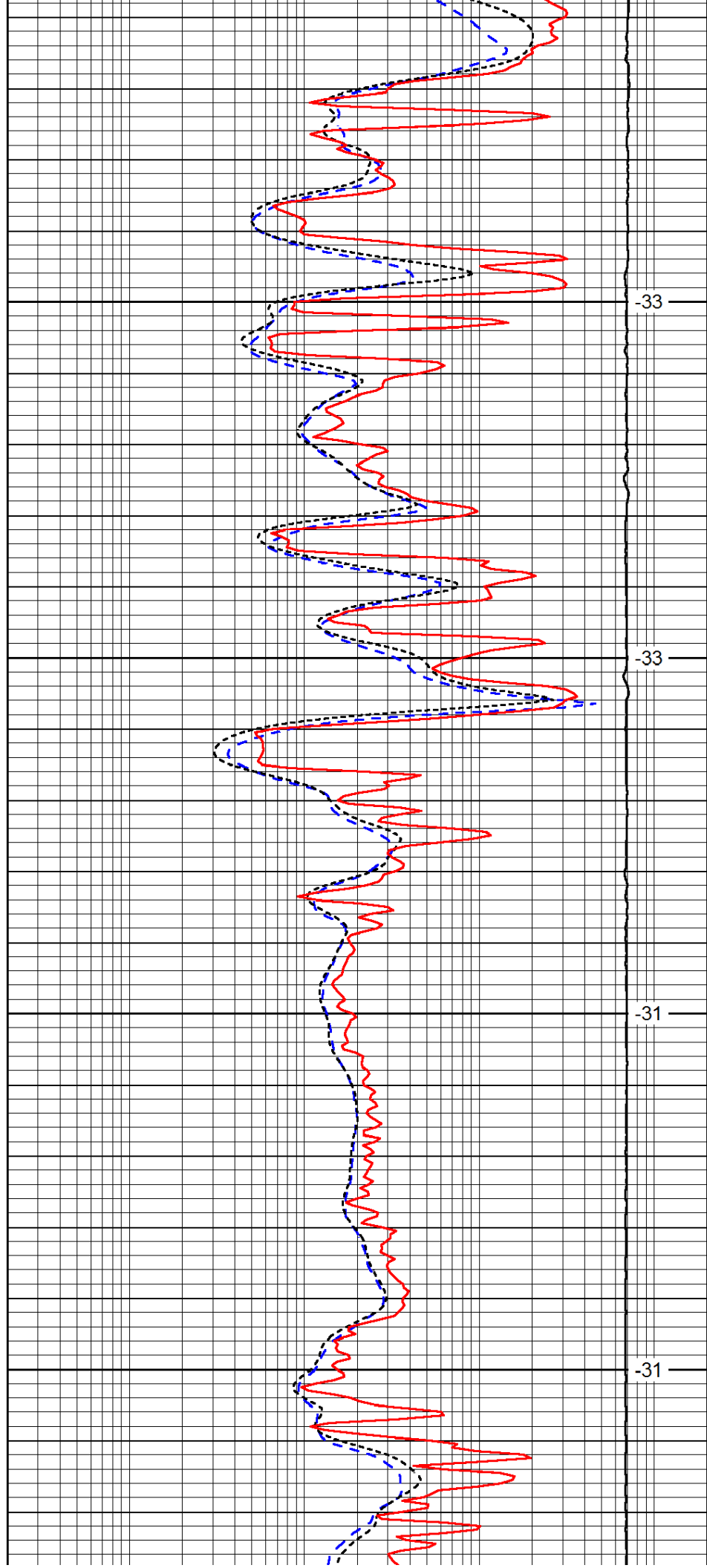


4150

4200

4250

4300

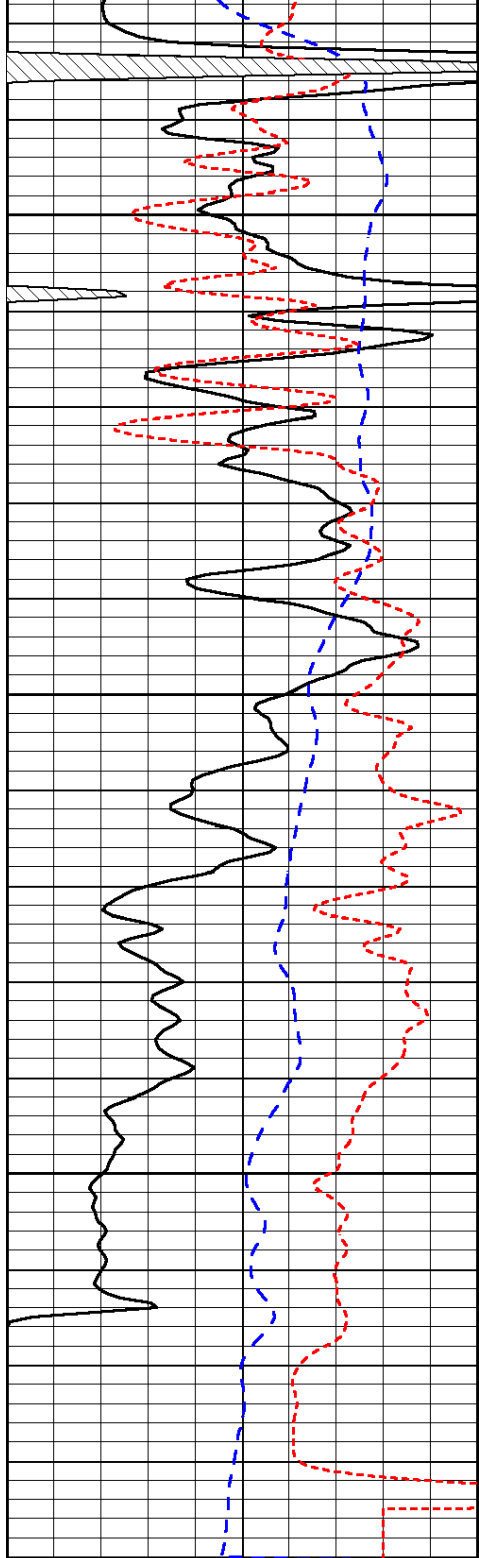


-33

-33

-31

-31



0	Gamma Ray	150
-200	SP (mV)	0
-160	RxoRt	40

4350

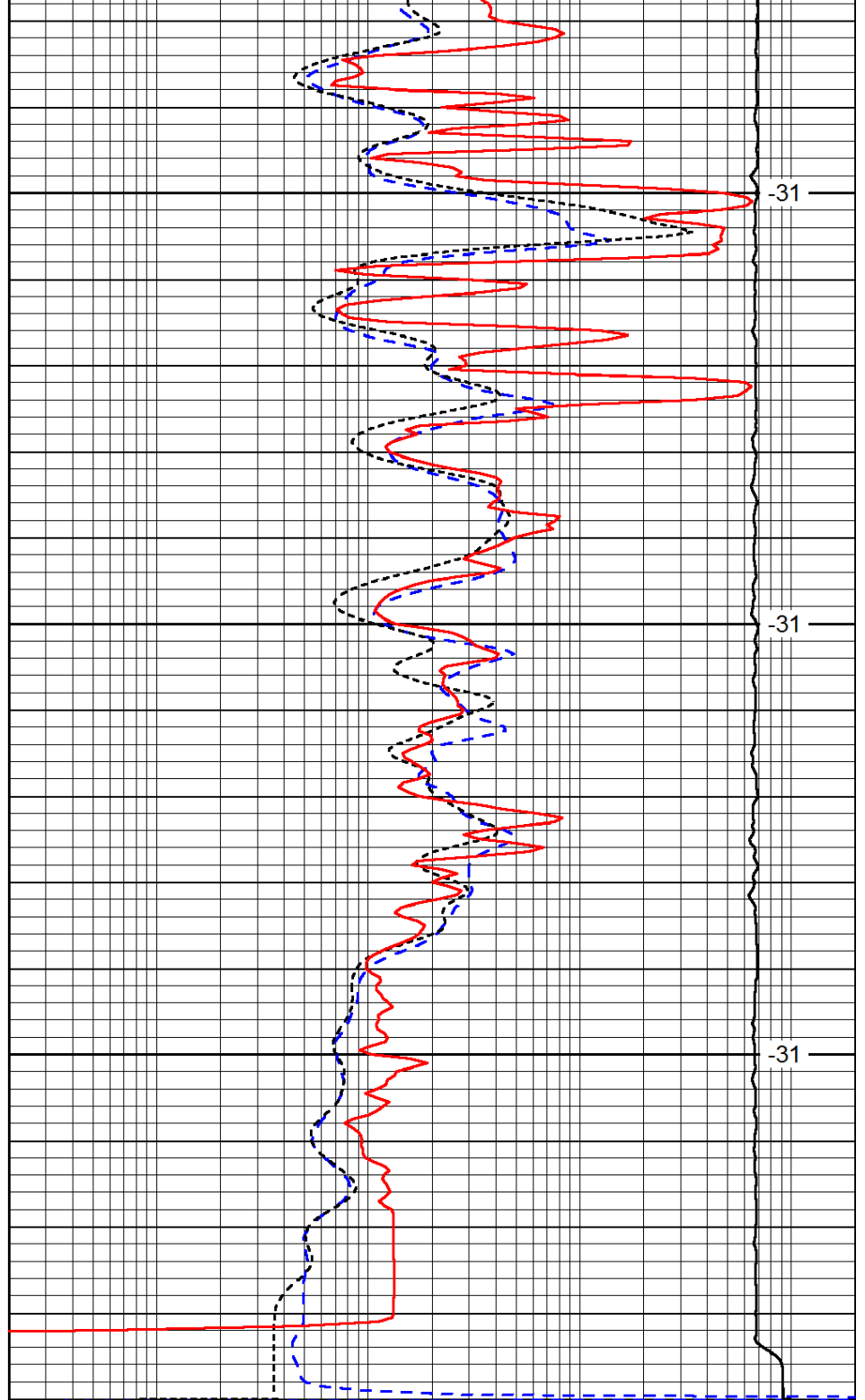
4400

4450

-31

-31

-31



0.2	Deep Resistivity	2000
0.2	Medium Resistivity	2000
0.2	Shallow Resistivity	2000
15000	Line Tension	0

LSPD