



**COMPLETION  
& PRODUCTION  
SERVICES CO.**

**COMPENSATED  
DENSITY / NEUTRON  
LOG**

Company TRANS PACIFIC OIL CORP.  
Well ROBERTS E #2-10  
Field WILDCAT  
County GOVE State KANSAS

Company TRANS PACIFIC OIL CORP.  
Well ROBERTS E #2-10  
Field WILDCAT  
County GOVE  
State KANSAS

Location: API #: 15-063-22086  
2640' FSL & 330' FWL  
SEC 10 TWP 15S RGE 28W  
Permanent Datum GROUND LEVEL Elevation 2475  
Log Measured From KELLY BUSHING 8' A.G.L.  
Drilling Measured From KELLY BUSHING  
Other Services  
DIL  
Elevation  
K.B. 2483  
D.F.  
G.L. 2475

Date	3-2-13
Run Number	ONE
Depth Driller	4300
Depth Logger	4301
Bottom Logged Interval	4277
Top Log Interval	3400
Casing Driller	223
Casing Logger	223
Bit Size	7.875
Type Fluid in Hole	CHEMICAL MUD
Density / Viscosity	9.4 / 48
pH / Fluid Loss	9.0 / 7.0
Source of Sample	FLOWLINE
Rim @ Meas. Temp	0.90 @ 84F
Rmf @ Meas. Temp	0.68 @ 84F
Rmc @ Meas. Temp	1.08 @ 84F
Source of Rmf / Rmc	MEASURED
Rim @ BHT	.640 @ 118F
Time Circulation Stopped	2 HOURS
Time Logger on Bottom	1:00 P.M.
Maximum Recorded Temperature	118F
Equipment Number	860
Location	HAYS, KS.
Recorded By	RUPP
Witnessed By	MIKE KIDWELL

<<< Fold Here >>>

All interpretations are opinions based on inferences from electrical or other measurements and we cannot and do not guarantee the accuracy or correctness of any interpretation, and we shall not, except in the case of gross or willful negligence on our part, be liable or responsible for any loss, costs, damages, or expenses incurred or sustained by anyone resulting from any interpretation made by any of our officers, agents or employees. These interpretations are also subject to our general terms and conditions set out in our current Price Schedule.

Comments

NABORS PRODUCTION & COMPLETION SERVICES  
785-628-6395  
THANK YOU FOR YOUR BUSINESS  
DIRECTIONS: JCT. OF K-40 & K-23, N TO NESS/LANE C.L., 2N TO RD.C, 3E, 3N, 1E INTO.

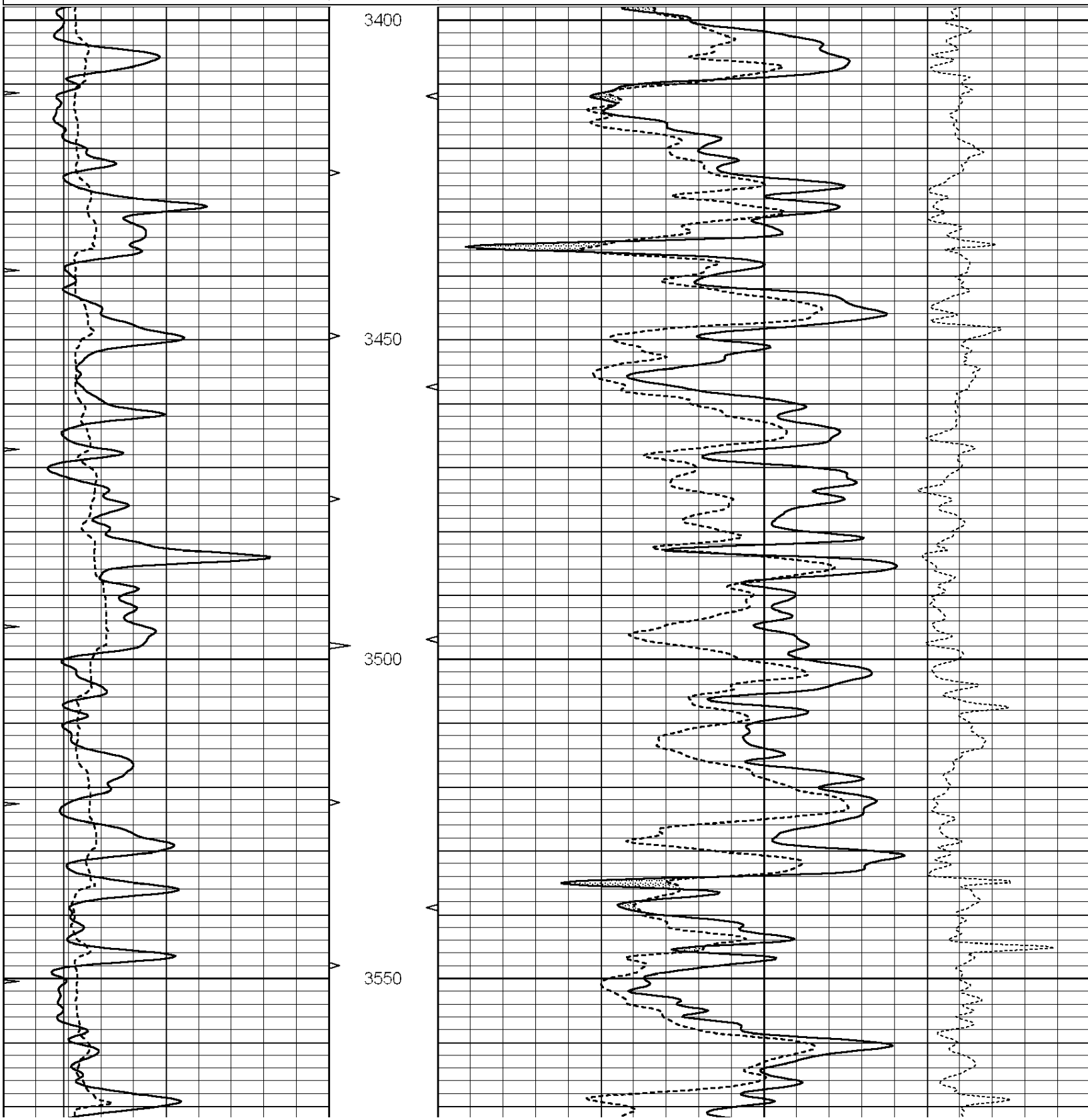


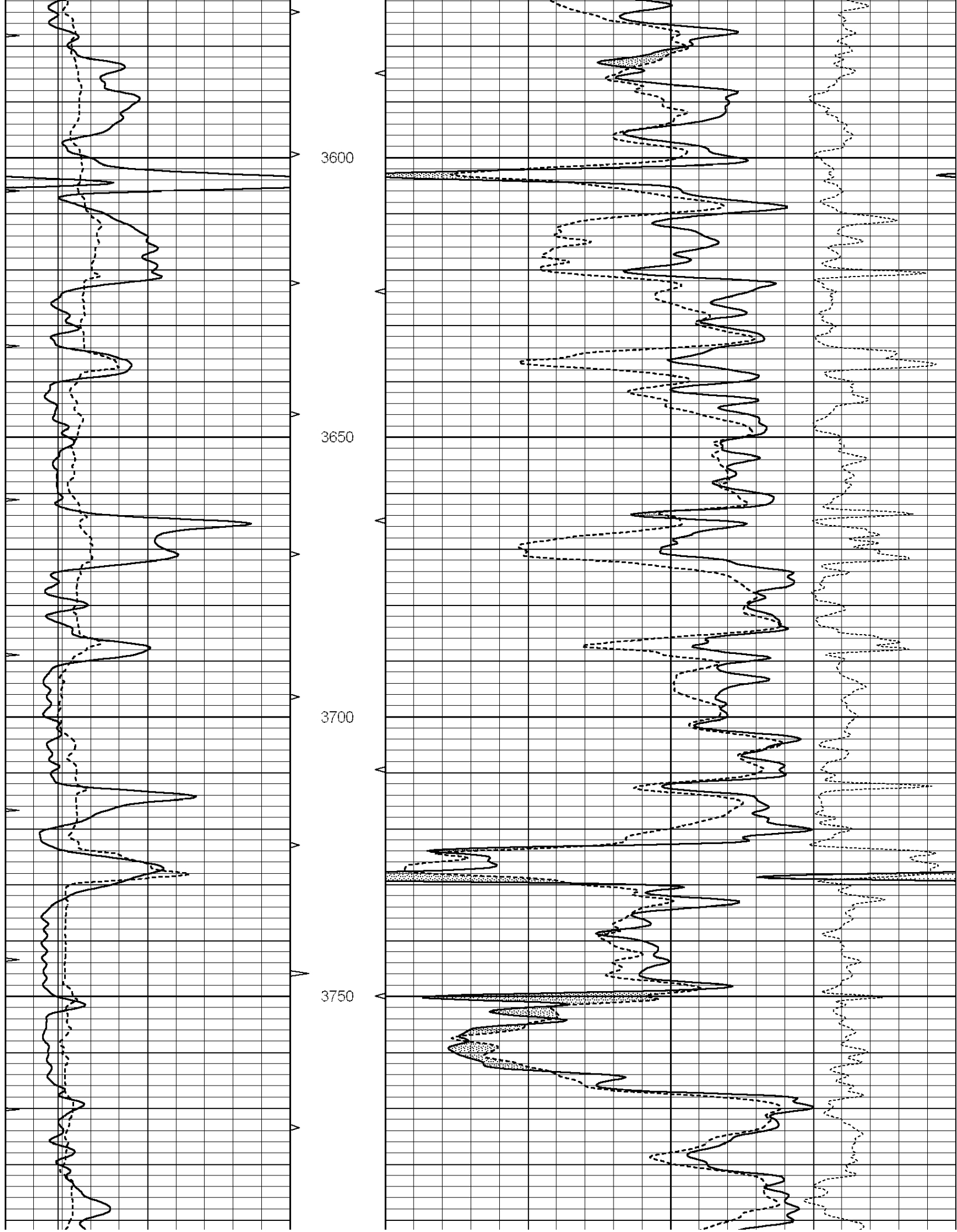
**COMPLETION  
& PRODUCTION**

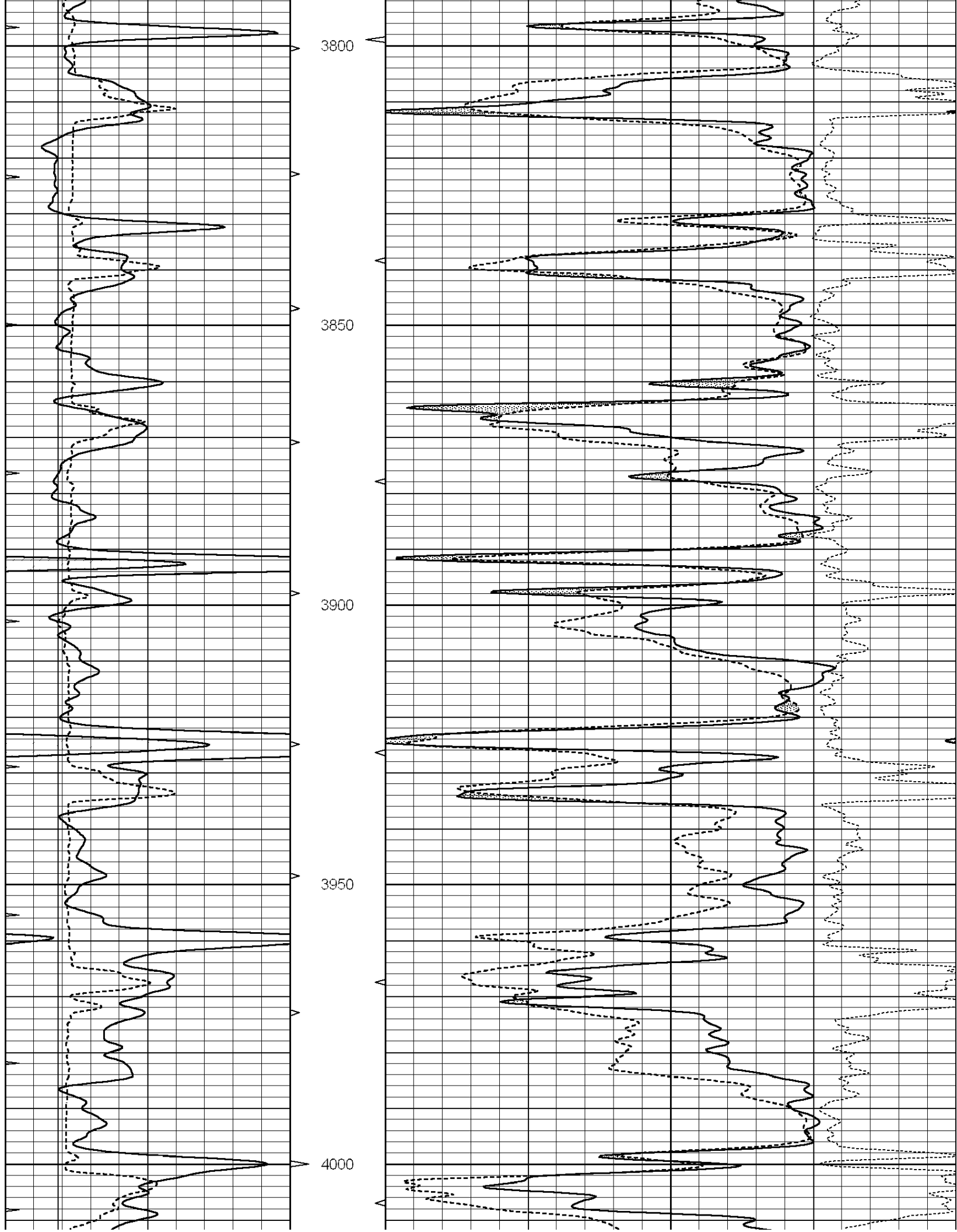
**MAIN SECTION**

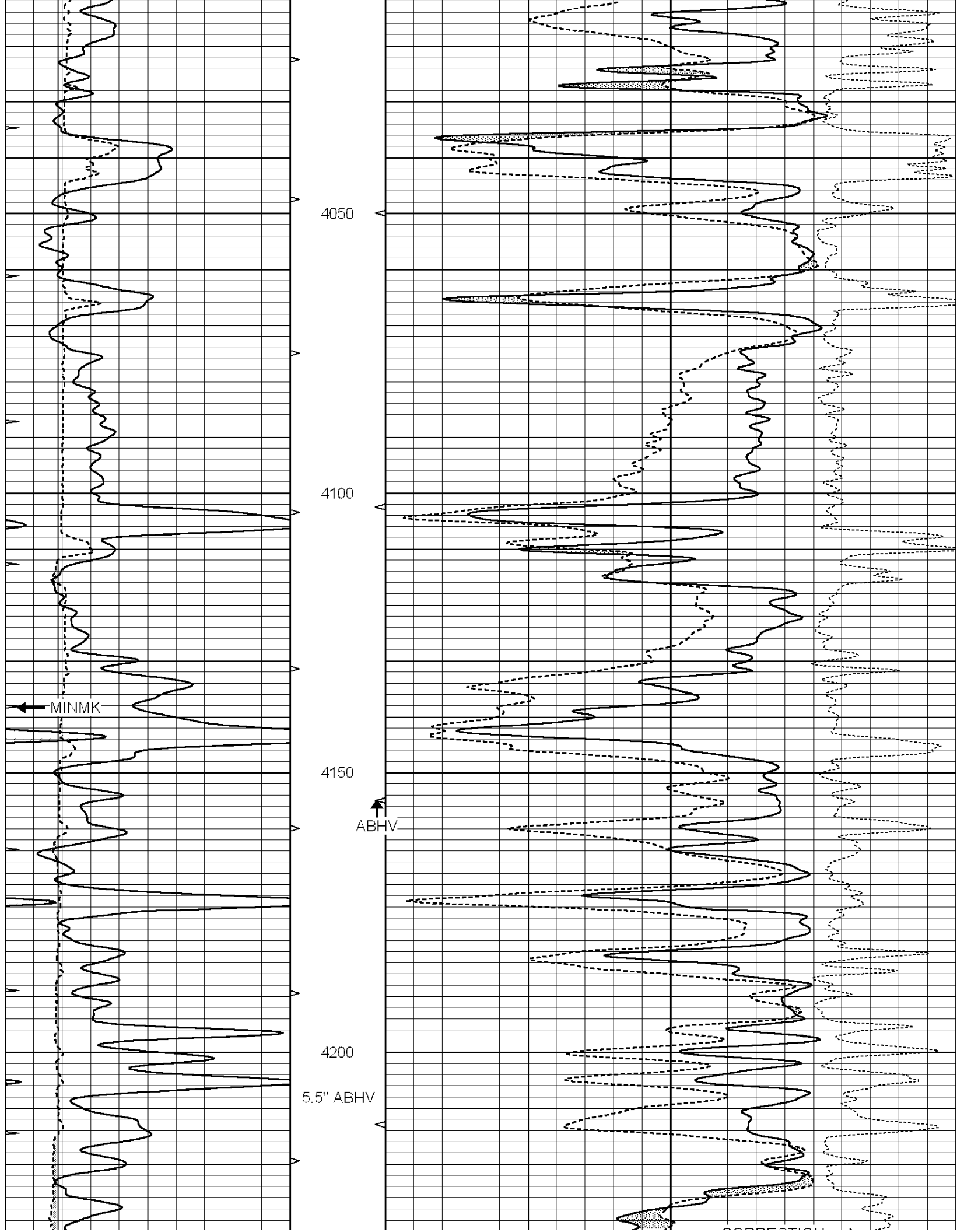
Database File: 010827ddn.db  
 Dataset Pathname: pass3.1A  
 Presentation Format: den\_neu  
 Dataset Creation: Sun Mar 03 14:19:31 2013  
 Charted by: Depth in Feet scaled 1:240

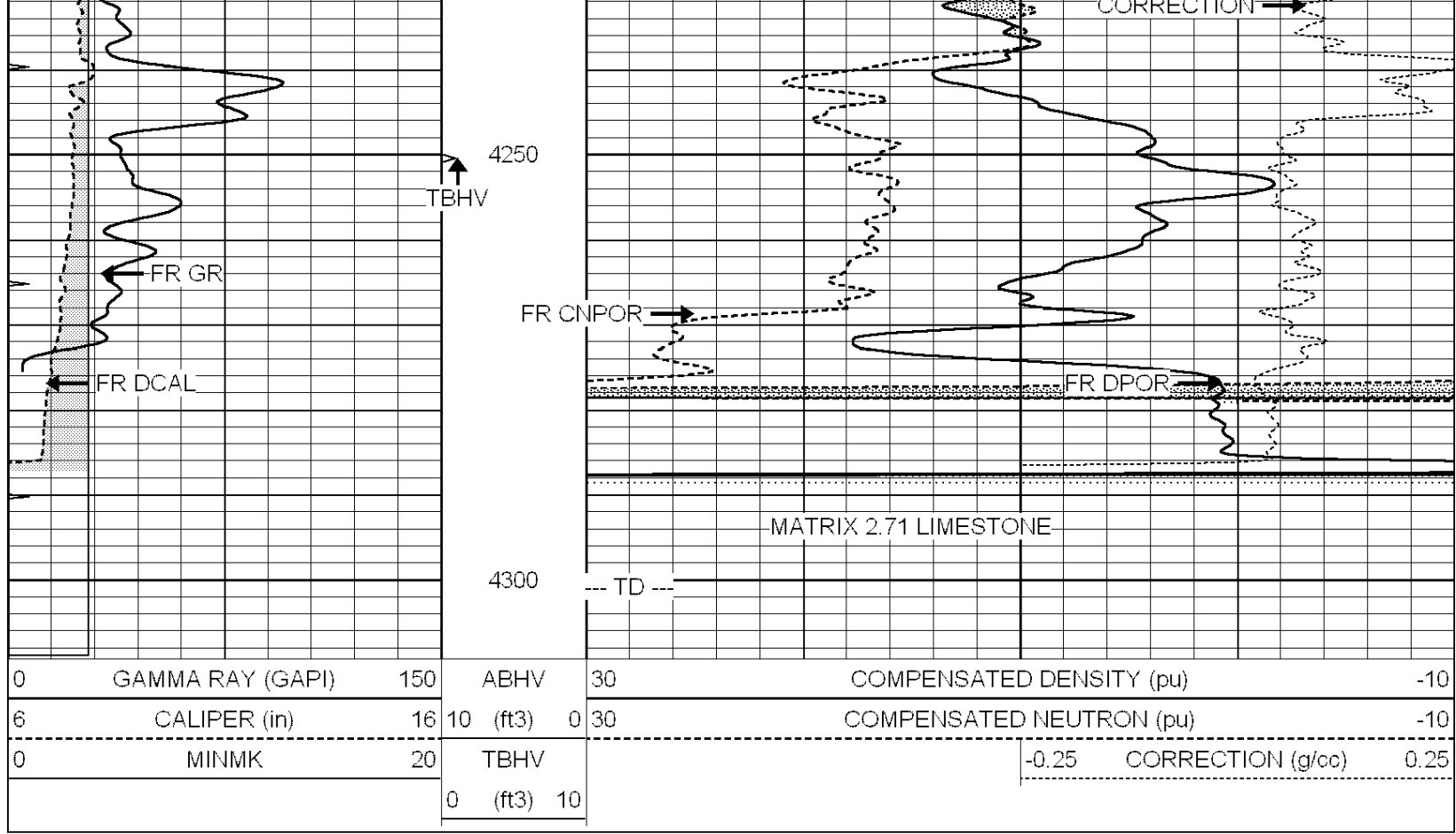
0	GAMMA RAY (GAPI)	150	ABHV	30	COMPENSATED DENSITY (pu)	-10
6	CALIPER (in)	16	10 (ft3)	0 30	COMPENSATED NEUTRON (pu)	-10
0	MINMK	20	TBHV		-0.25 CORRECTION (g/cc)	0.25
			0 (ft3)	10		









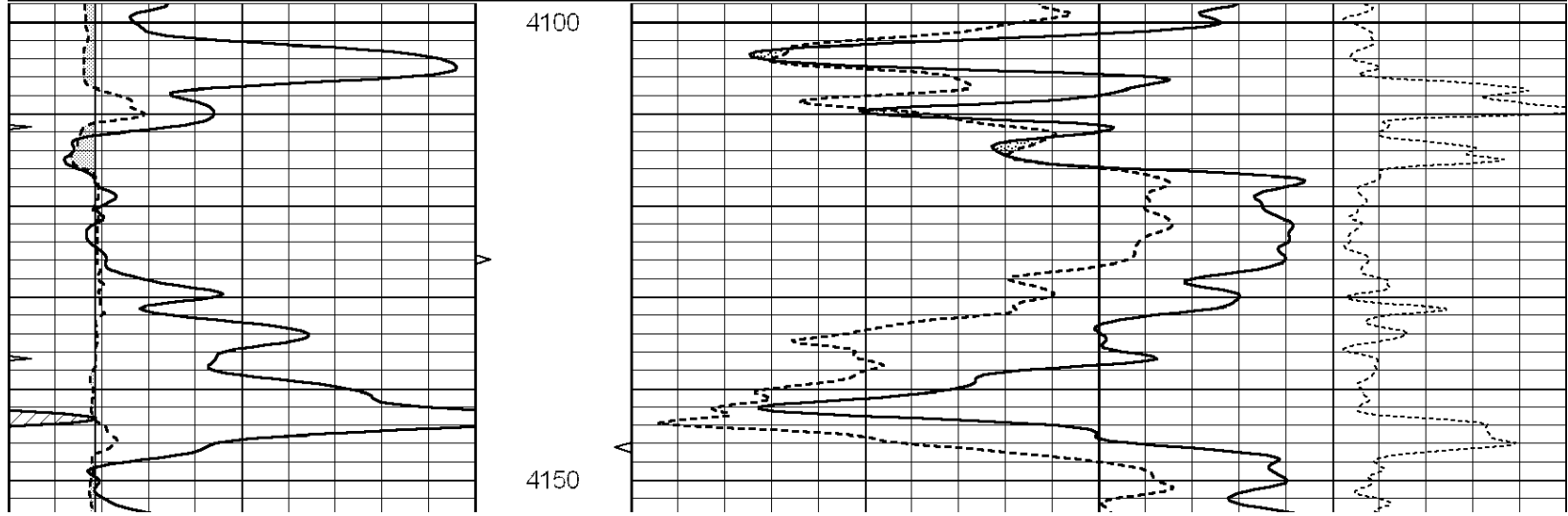


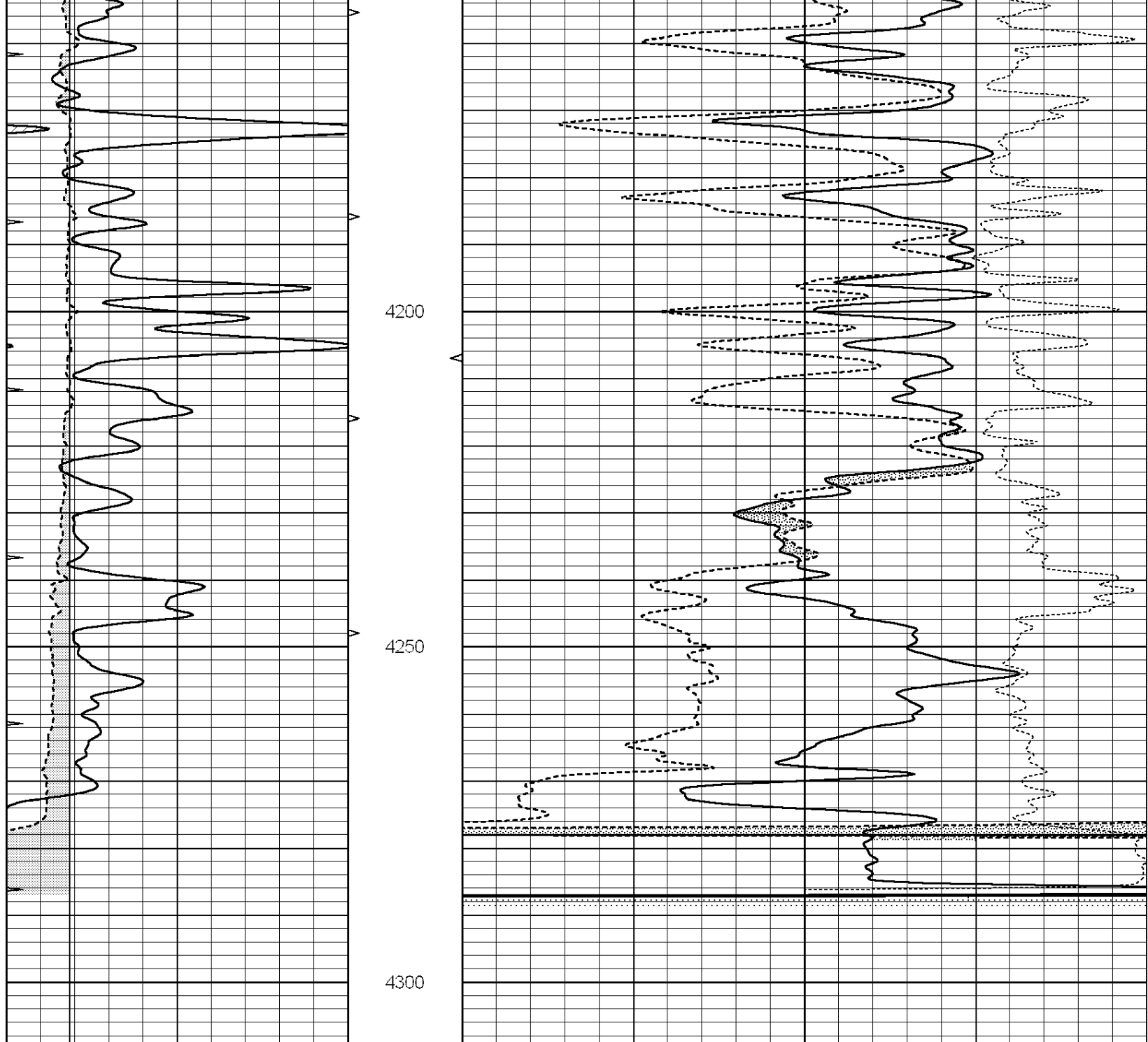
**NABORS**  
**COMPLETION & PRODUCTION SERVICES CO.**

# REPEAT SECTION

Database File: 010827ddn.db  
 Dataset Pathname: pass2.1A  
 Presentation Format: den\_neu  
 Dataset Creation: Sun Mar 03 13:05:15 2013 by Calc Open-Cased 090629  
 Charted by: Depth in Feet scaled 1:240

0	GAMMA RAY (GAPI)	150	ABHV	30	COMPENSATED DENSITY (pu)	-10
6	CALIPER (in)	16	10 (ft3)	0 30	COMPENSATED NEUTRON (pu)	-10
0	MINMK	20	TBHV		-0.25 CORRECTION (g/cc)	0.25
			0 (ft3)	10		





0	GAMMA RAY (GAPI)	150	ABHV	30	COMPENSATED DENSITY (pu)	-10	
6	CALIPER (in)	16	10 (ft3)	0 30	COMPENSATED NEUTRON (pu)	-10	
0	MINMK	20	TBHV		-0.25	CORRECTION (g/cc)	0.25
			0 (ft3)	10			

### Calibration Report

Database File: 010827ddn.db  
 Dataset Pathname: pass3.1A  
 Dataset Creation: Sun Mar 03 14:19:31 2013

### Dual Induction Calibration Report

Serial-Model:	PROBE7-DILG
Surface Cal Performed:	Sun Mar 03 13:19:30 2013
Downhole Cal Performed:	Sat Jan 19 19:51:38 2013
After Survey Verification Performed:	Sat Jan 19 19:51:38 2013

Surface Calibration			Readings			References			Results	
Loop:	Air	Loop		Air	Loop		m	b		
Deep	0.793	0.790	V	0.000	400.000	mmho/m	630.000	-2.000		
Medium	0.992	1.002	V	0.000	464.000	mmho/m	700.000	-50.000		
Internal:	Zero	Cal		Zero	Cal		m	b		
Deep	0.041	0.642	V	0.000	400.000	mmho/m	664.874	-27.011		
Medium	0.035	0.802	V	0.000	464.000	mmho/m	604.936	-21.367		

Downhole Calibration			Readings			References			Results	
	Zero	Cal		Zero	Cal		m'	b'		
Deep	135384.000	27094.500	mmho/m	135400.000	27082.400	mmho/m	1.000	-19.259		
Medium	-47330.100	-9381.740	mmho/m	-47327.100	-9389.280	mmho/m	1.000	-10.154		
LL3		7.322	V		1400.000	Ohm-m				
		0.038	V		20.000	Ohm-m				
		-7.273	V		4000.000	mmho-m				

After Survey Verification			Readings			Targets			Results	
	Zero	Cal		Zero	Cal		m'	b'		
Deep	0.000	0.000	mmho/m	135384.000	27094.500	mmho/m	1.000	0.000		
Medium	0.000	0.000	mmho/m	-47330.100	-9381.740	mmho/m	1.000	0.000		
LL3		0.000	Ohm-m		1400.000	Ohm-m				
		0.000	Ohm-m		20.000	Ohm-m				
		0.000	mmho-m		4000.000	mmho-m				

**Compensated Density Calibration Report**

Serial-Model:	GEAR1-GEARHART
Source / Verifier:	147 / 147
Master Calibration Performed:	Sun Mar 03 12:13:18 2013

Master Calibration			Density		Far Detector		Near Detector	
Magnesium	1.710	g/cc	1205.77	610.74	cps			
Aluminum	2.590	g/cc	271.21	419.72	cps			
Spine Angle = 75.89			Density/Spine Ratio = 0.572					
	Size		Reading					
Small Ring	7.70	in	4.69	V				
Large Ring	14.00	in	6.52	V				

**Compensated Neutron Calibration Report**

Serial Number:	NEU_4I
Tool Model:	G

CALIBRATION						
Detector	Readings		Target		Normalization	
Short Space	1.00	cps	1.00	cps	1.0000	
Long Space	1.00	cps	1.00	cps	1.0000	

**Gamma Ray Calibration Report**

Serial Number: GR5  
Tool Model: OPEN  
Performed: Sun Mar 03 13:31:58 2013

Calibrator Value: 1.0 GAPI

Background Reading: 0.0 cps

Calibrator Reading: 1.0 cps

Sensitivity: 1.9000 GAPI/cps