



**COMPLETION  
& PRODUCTION  
SERVICES CO.**

**MICRO  
LOG**

Company CITATION OIL & GAS CORPORATION  
Well BAUMER #60  
Field BEMIS - SHUTTS  
County ELLIS  
State KANSAS

Company CITATION OIL & GAS CORPORATION  
Well BAUMER #60  
Field BEMIS - SHUTTS  
County ELLIS State KANSAS

Location: API # : 15-051-26442-0000  
1320' FNL & 2640' FWL  
SEC 27 TWP 11S RGE 17W  
Permanent Datum GROUND LEVEL Elevation 2062  
Log Measured From KELLY BUSHING 11' A.G.L.  
Drilling Measured From KELLY BUSHING  
Other Services  
CDL/CNL/PE  
DIL  
Elevation  
K.B. 2073  
D.F. 2071  
G.L. 2062

Date	2/17/13
Run Number	TWO
Depth Driller	3600
Depth Logger	3598
Bottom Logged Interval	3596
Top Log Interval	2500
Casing Driller	8 5/8" @ 1260'
Casing Logger	1274
Bit Size	7 7/8"
Type Fluid in Hole	CHEMICAL MUD
Density / Viscosity	8.9/48
pH / Fluid Loss	9.5/8.0
Source of Sample	FLOWLINE
Rim @ Meas. Temp	.800 @ 100F
Rmf @ Meas. Temp	.600 @ 100F
Rmc @ Meas. Temp	.960 @ 100F
Source of Rmf / Rmc	MEASUREMENT
Rim @ BHT	714 @ 112F
Time Circulation Stopped	3.5 HOURS
Time Logger on Bottom	11:30 P.M.
Maximum Recorded Temperature	112F
Equipment Number	4854
Location	HAYS, KANSAS
Recorded By	JEFF LUEBBERS
Witnessed By	ED GLASSMAN

<<< Fold Here >>>

All interpretations are opinions based on inferences from electrical or other measurements and we cannot and do not guarantee the accuracy or correctness of any interpretation, and we shall not, except in the case of gross or willful negligence on our part, be liable or responsible for any loss, costs, damages, or expenses incurred or sustained by anyone resulting from any interpretation made by any of our officers, agents or employees. These interpretations are also subject to our general terms and conditions set out in our current Price Schedule.

**Comments**

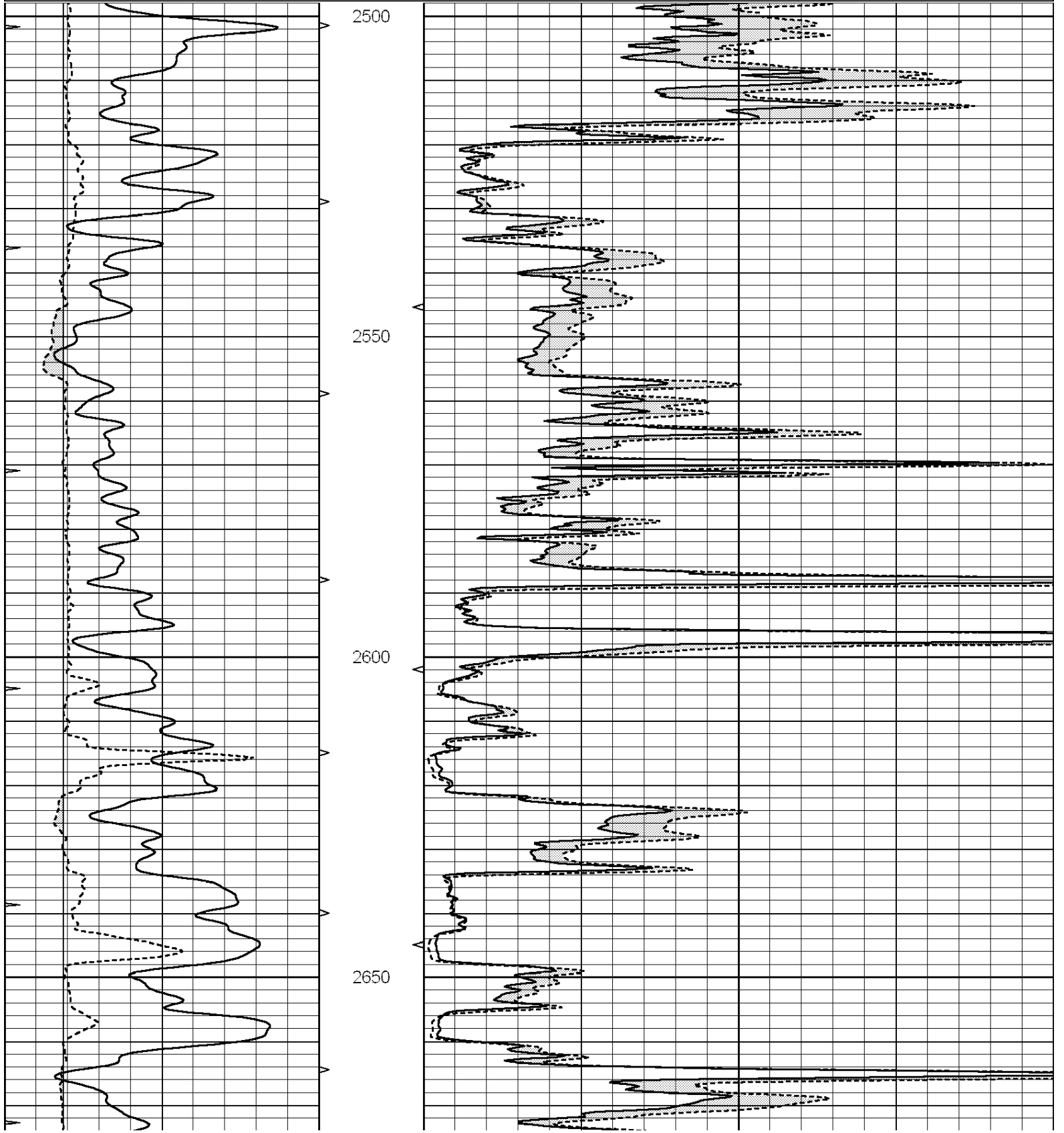
THANK YOU FOR USING "NABORS" HAYS, KANSAS (785) 628-6395  
DIRECTIONS  
(SALINE RIVER RD. & CODELL RD.) 1S. TO "WILES RD.", W. INTO CATTLE GUARD, UP HILL TO THE SOUTH THEN E. @ TIN BUILDING

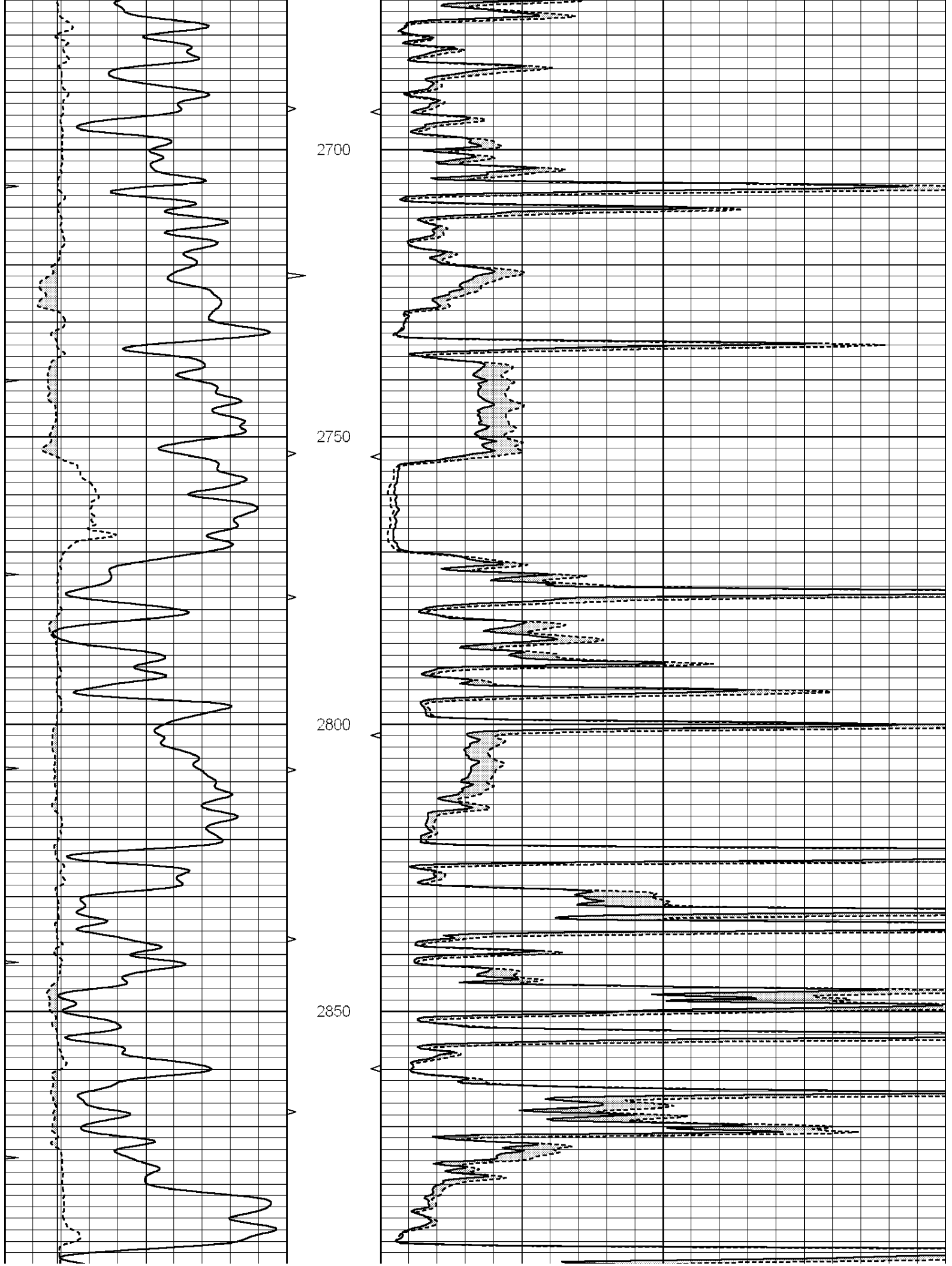


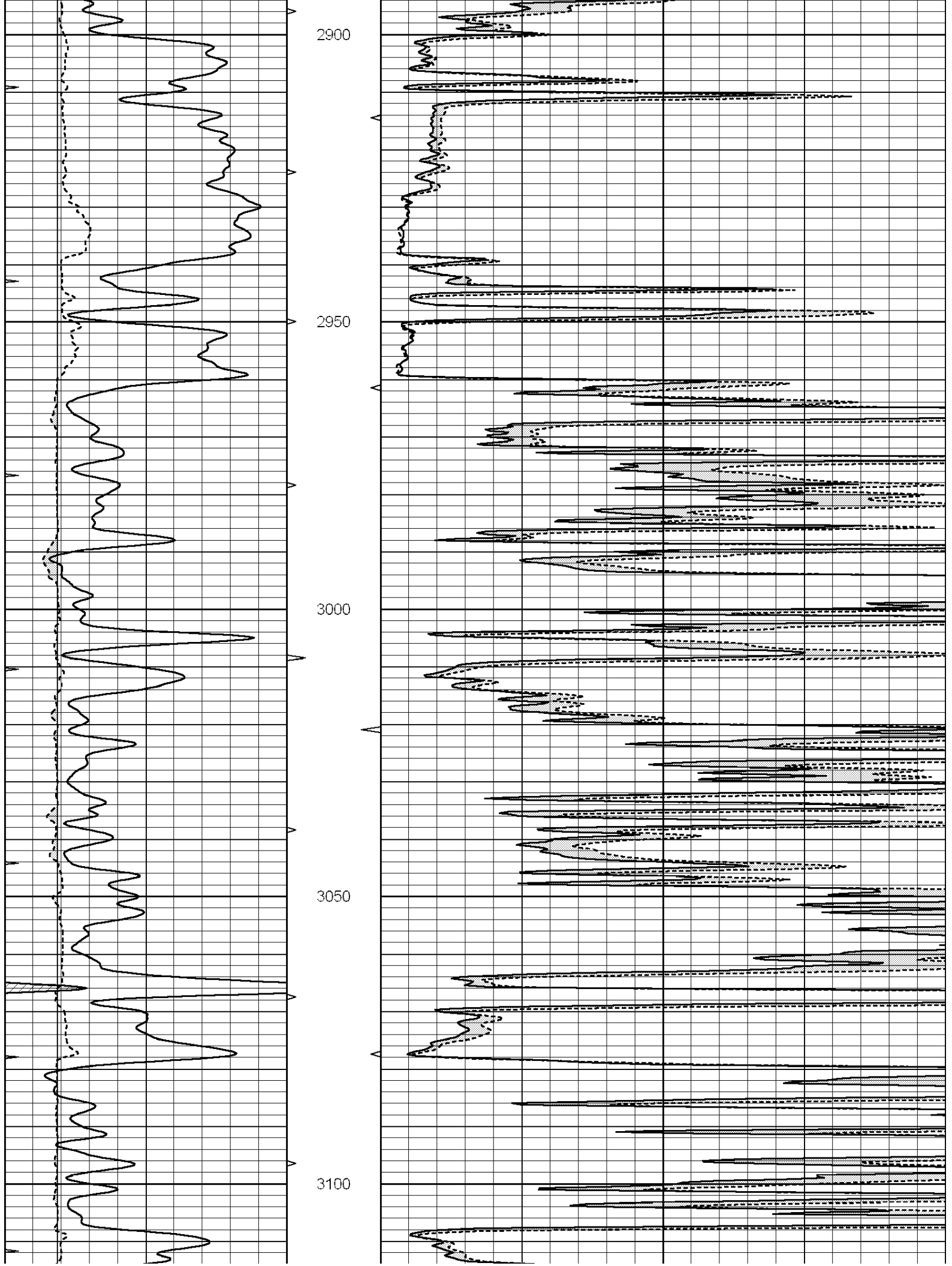
**MAIN SECTION**

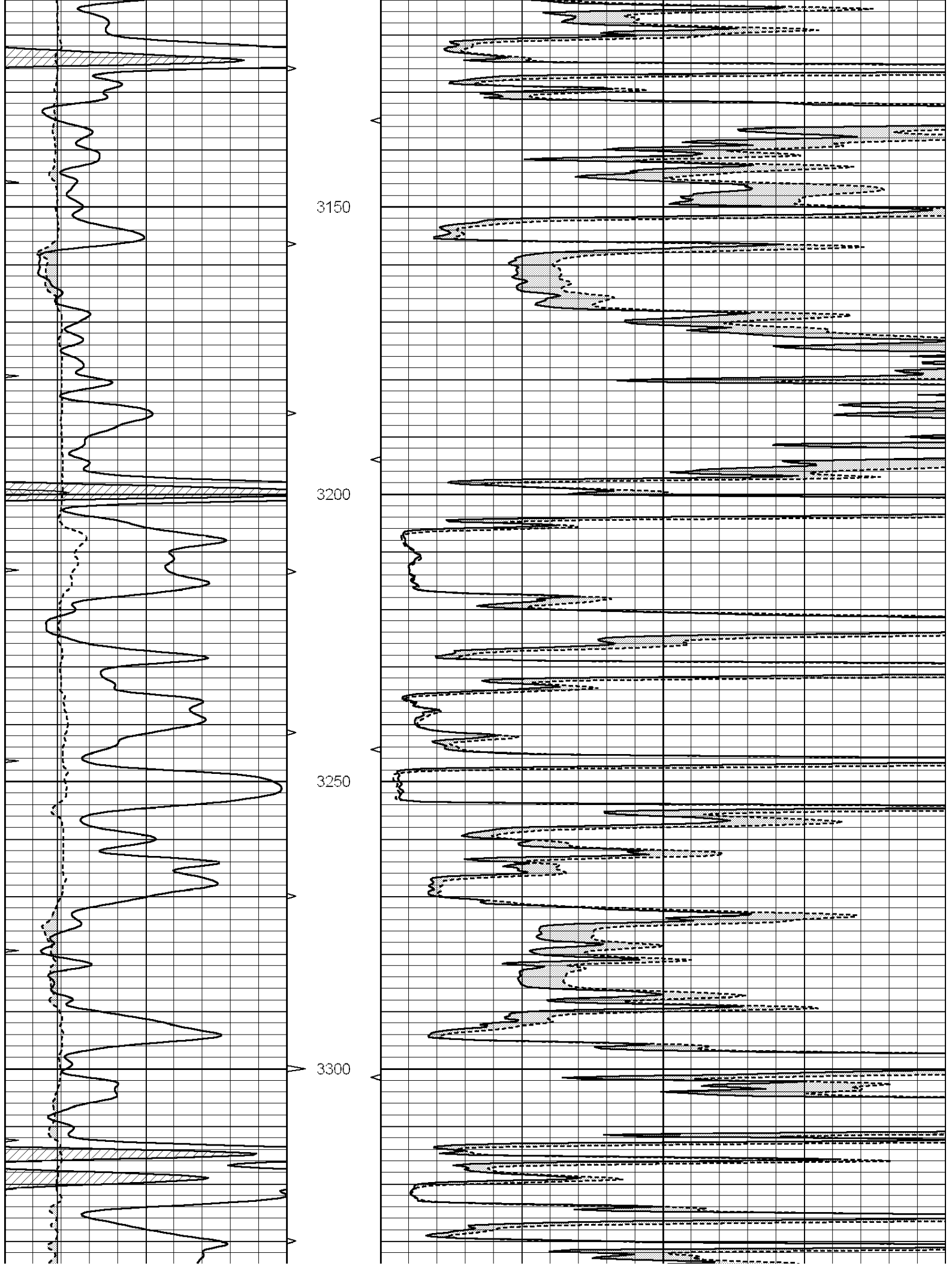
Database File: 010413pe.db  
 Dataset Pathname: pass6.5  
 Presentation Format: micro  
 Dataset Creation: Mon Feb 18 01:51:04 2013 by Calc SOC 120430  
 Charted by: Depth in Feet scaled 1:240

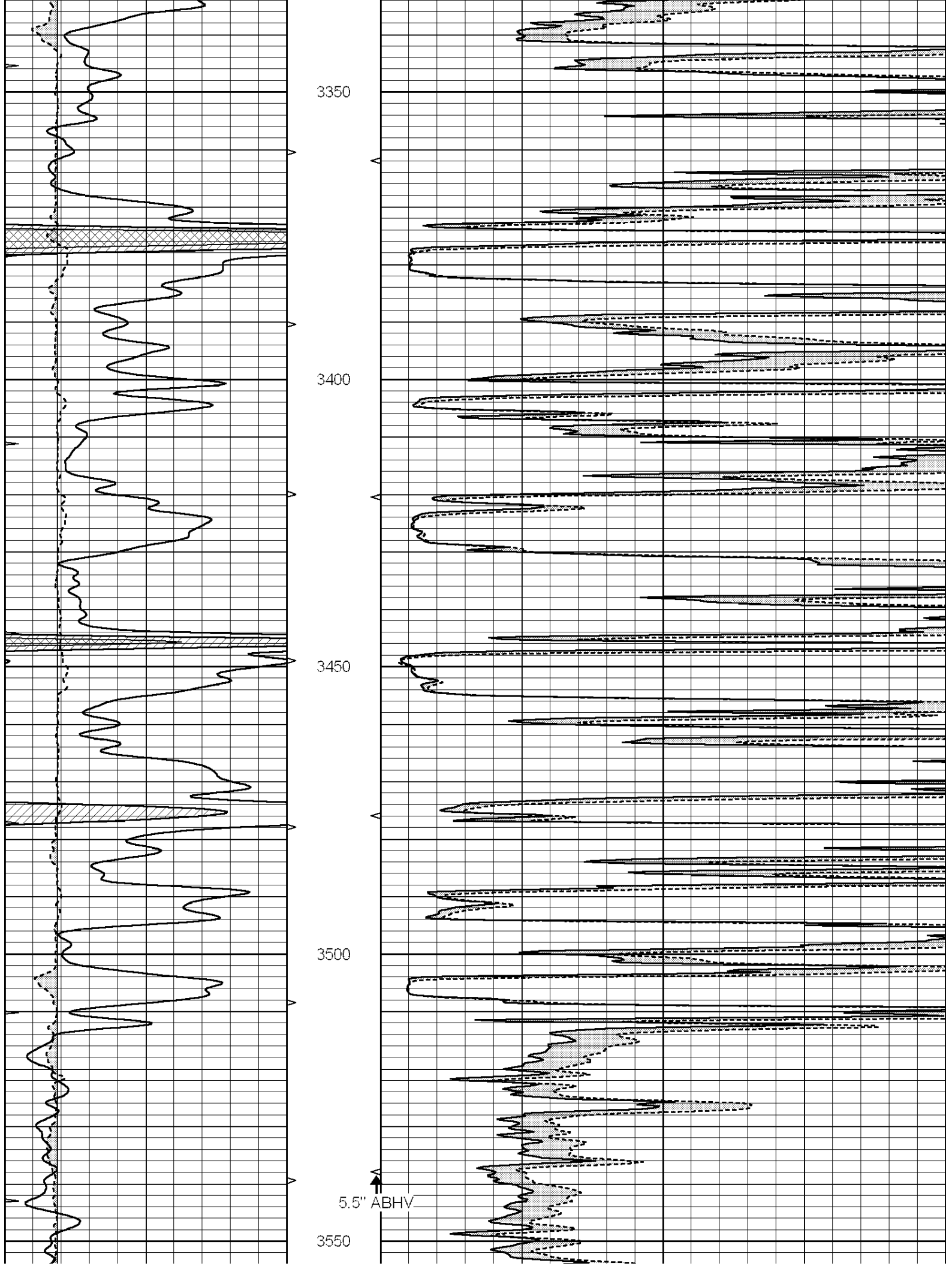
0	GAMMA RAY (GAPI)	150	ABHV	0	MEL1.5 (Ohm-m)	40
6	CALIPER (in)	16	10 (ft3)	0	MEL2.0 (Ohm-m)	40
0	MINMK	20	TBHV			
			0 (ft3)	10		

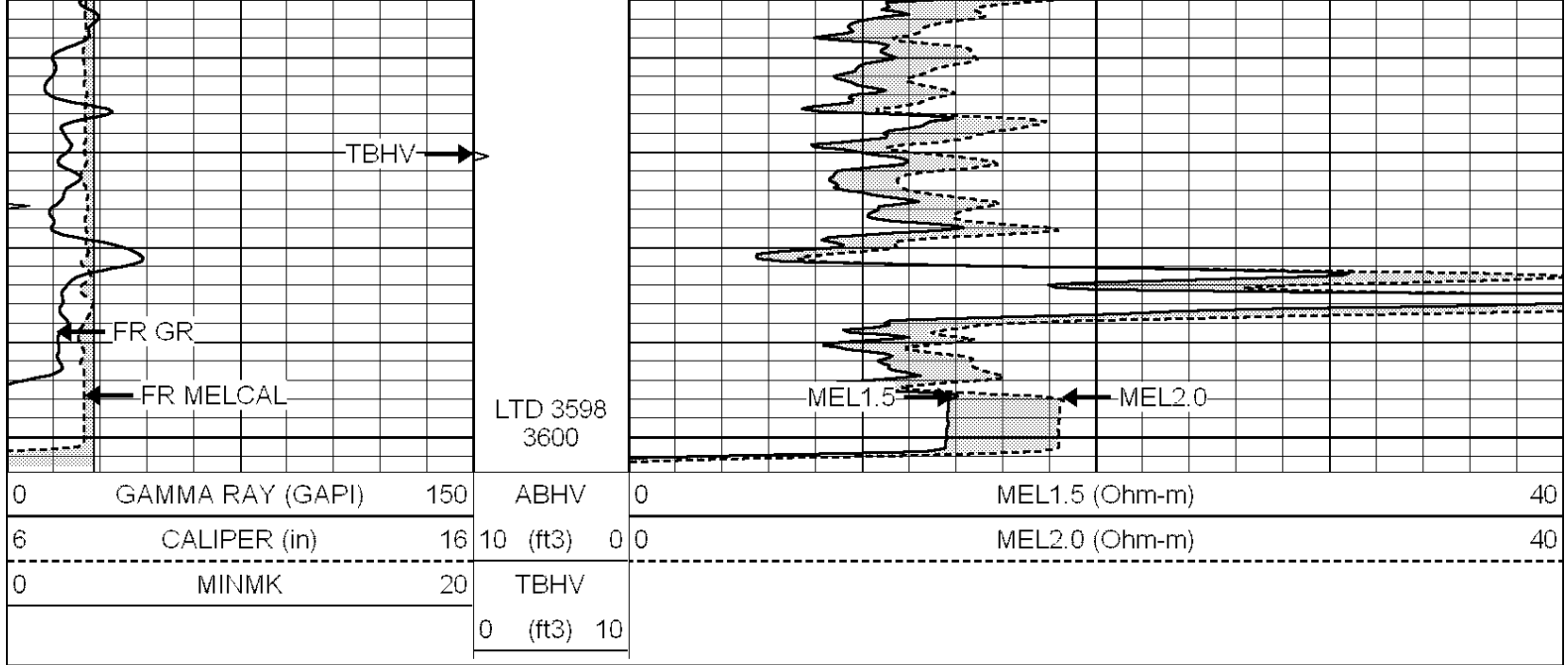








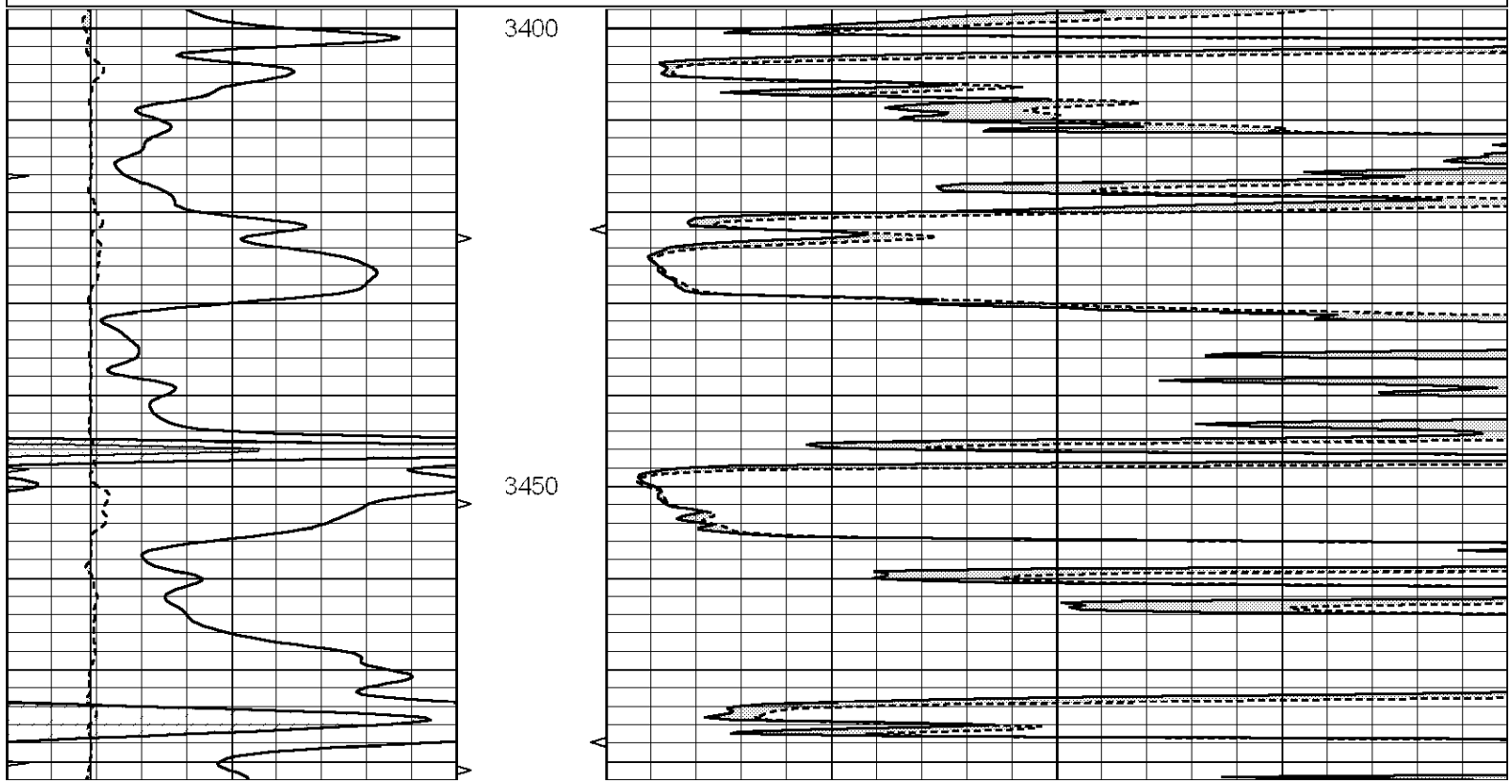


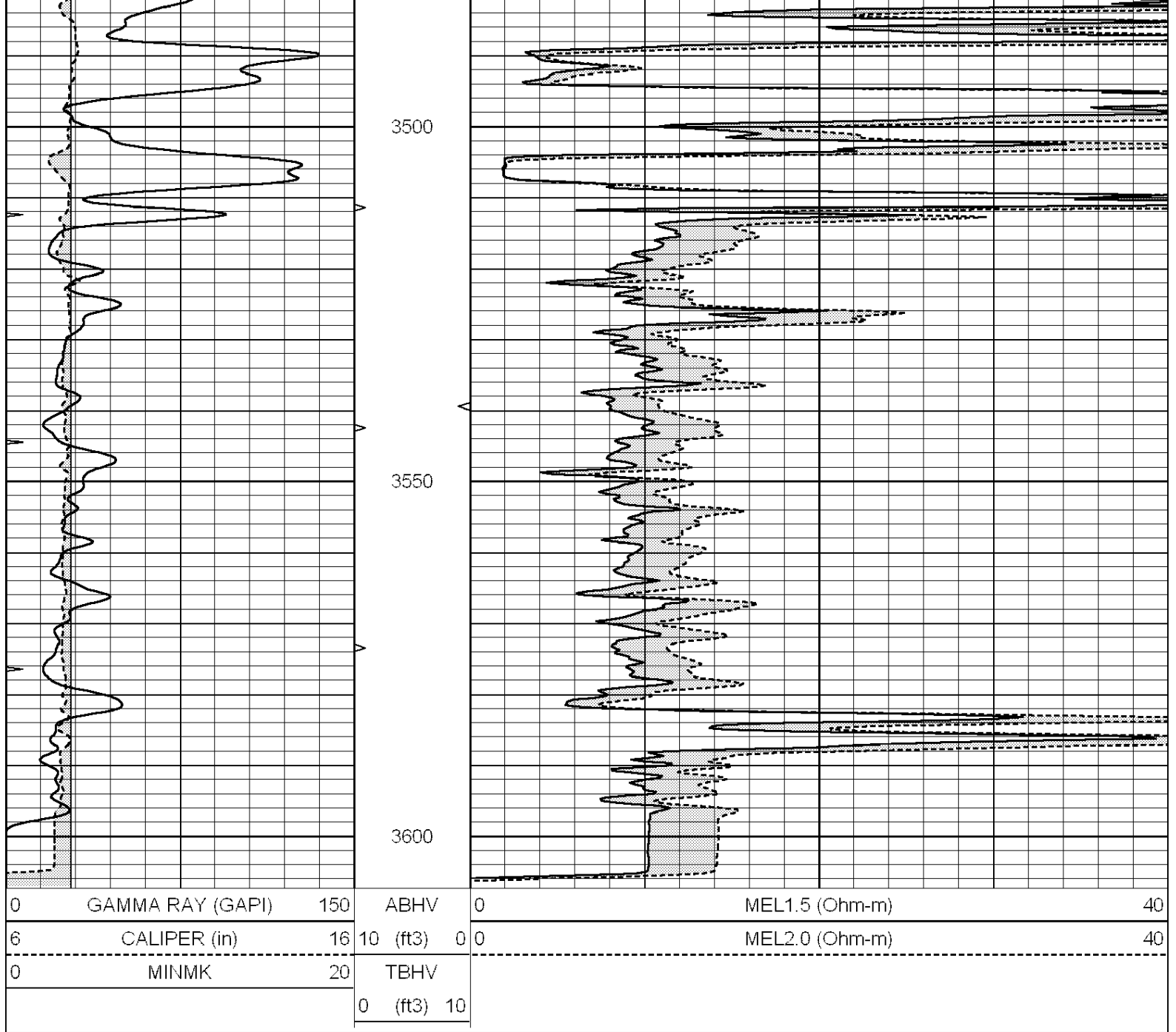


# REPEAT SECTION

Database File: 010413pe.db  
 Dataset Pathname: pass5.2  
 Presentation Format: micro  
 Dataset Creation: Mon Feb 18 01:10:14 2013 by Calc SOC 120430  
 Charted by: Depth in Feet scaled 1:240

0	GAMMA RAY (GAPI)	150	ABHV	0	MEL1.5 (Ohm-m)	40
6	CALIPER (in)	16	10 (ft3)	0	MEL2.0 (Ohm-m)	40
0	MINMK	20	TBHV			
			0 (ft3)	10		





Calibration Report

Database File: 010413pe.db  
 Dataset Pathname: pass6.5  
 Dataset Creation: Mon Feb 18 01:51:04 2013 by Calc SOC 120430

MICRO Calibration Report

Serial Number: MICRO5  
 Tool Model: PROBE  
 Performed: Thu Jan 31 03:56:49 2013

Caliper Calibration: Gain=3.536      Offset=-5.013  
 References      Low Cal      High Cal  
 Readings      8.200      15.000  
                  3.737      5.660

1.5" Calibration: Gain=38.000      Offset=-1.000  
 References      Low Cal      High Cal  
 Readings      0.000      20.000  
                  2.011      2.000

Readings 0.014 0.998

2" Calibration: Gain=50.000 Offset=-1.700

References	Low Cal	High Cal
Readings	0.000	20.000
	0.009	0.904

Gamma Ray Calibration Report

Serial Number:	GR4
Tool Model:	OPEN
Performed:	Sun Feb 17 04:46:46 2013

Calibrator Value:	200.0	GAPI
-------------------	-------	------

Background Reading:	0.0	cps
Calibrator Reading:	189.0	cps

Sensitivity:	2.2000	GAPI/cps
--------------	--------	----------