

OPERATOR

Company: JASON OIL COMPANY, LLC
 Address: 3718 83RD ST
 PO BOX 701
 RUSSELL, KS
 Contact Geologist: JIM SCHOENBERGER
 Contact Phone Nbr: (785) 483-4204
 Well Name: WALZ #1
 Location: SE SW NE NW 13 - 11S - 20W
 Pool:
 State: KANSAS

API: 15-051-26608-00-00
 Field: BIG THUNDER WEST
 Country: USA

Scale 1:240 Imperial

Well Name: WALZ #1
 Surface Location: SE SW NE NW 13 - 11S - 20W
 Bottom Location:
 API: 15-051-26608-00-00
 License Number:
 Spud Date: 9/16/2013 Time: 3:15 AM
 Region: ELLIS COUNTY, KS
 Drilling Completed: 9/22/2013 Time: 8:19 AM
 Surface Coordinates: 4171' FSL & 3448' FEL
 Bottom Hole Coordinates:
 Ground Elevation: 2012.00ft
 K.B. Elevation: 2021.00ft
 Logged Interval: 2900.00ft To: 3720.00ft
 Total Depth: 3720.00ft
 Formation: LANSING - KANSAS CITY
 Drilling Fluid Type: CHEMICAL/FRESH WATER GEL

SURFACE CO-ORDINATES

Well Type: Vertical
 Longitude:
 N/S Co-ord: 4171' FSL
 E/W Co-ord: 3448' FEL
 Latitude:

LOGGED BY

Company: SOLUTIONS CONSULTING, INC.
 Address: 108 W 35TH
 HAYS, KS 67601
 Phone Nbr: (785)259-3737
 Logged By: Geologist Name: JEFF LAWLER/HERB DEINES

CONTRACTOR

Contractor: SOUTHWIND DRILLING, INC.
 Rig #: 8
 Rig Type: MUD ROTARY
 Spud Date: 9/16/2013 Time: 3:15 AM
 TD Date: 9/22/2013 Time: 8:19 AM
 Rig Release: 9/23/2013 Time: 12:00 AM

ELEVATIONS

K.B. Elevation: 2021.00ft Ground Elevation: 2012.00ft
 K.B. to Ground: 9.00ft

NOTES

RECOMMENDATION TO PLUG AND ABANDON WELL DUE TO LOW STRUCTURE AND LACK OF SHOWS.

OPEN HOLE LOGGING BY NABORS COMPLETION AND PRODUCTION SERVICES CO: RADIATION GUARD LOG

NO DRILL STEM TESTS WERE RAN ON THIS WELL

PLUGGING PROGRAM:

ORDERED 220 SXS 60/40 POZ, 4%GEL W 1/4# FLO-SEAL PER SACK

1ST PLUG @ 1450' W/ 25 SXS
 2ND PLUG @ 700' W/ 100 SXS
 3RD PLUG @ 300' W/ 40 SXS
 4TH PLUG @ 40' W/ 10 SXS
 RATHOLE W/ 30 SXS
 MOUSEHOLE W/ 15 SXS
 QUALITY CEMENTING-TICKET # 7866
 PLUG DOWN 12:00AM 9/23/2013

FORMATION TOPS SUMMARY AND CHRONOLOGY OF DAILY ACTIVITY

WALZ # 1	MIXER # 2
4171' FSL & 3448' FEL, NW/4	500'FNL & 1440'FWL
Sec. 13-11s-20w	Sec 13-11s-20w
2012' GL 2021' KB	Reference Well

<u>FORMATION</u>	<u>SAMPLE TOPS</u>	<u>LOG TOPS</u>	<u>LOG TOPS</u>
Anhydrite	1411+ 610	1411+ 610	+ 607
B-Anhydrite	1453+ 568	1449+ 572	+ 562
Topeka	3056-1035	3054-1033	-1032
Heebner Shale	3280-1259	3278-1257	-1253
Toronto	3299-1278	3301-1280	-1272
LKC	3320-1299	3316-1295	-1292
BKC		3538-1517	-1513
Arbuckle	NR	NR	-1620
RTD	3720-1699		
LTD		3721-1700	

SUMMARY OF DAILY ACTIVITY

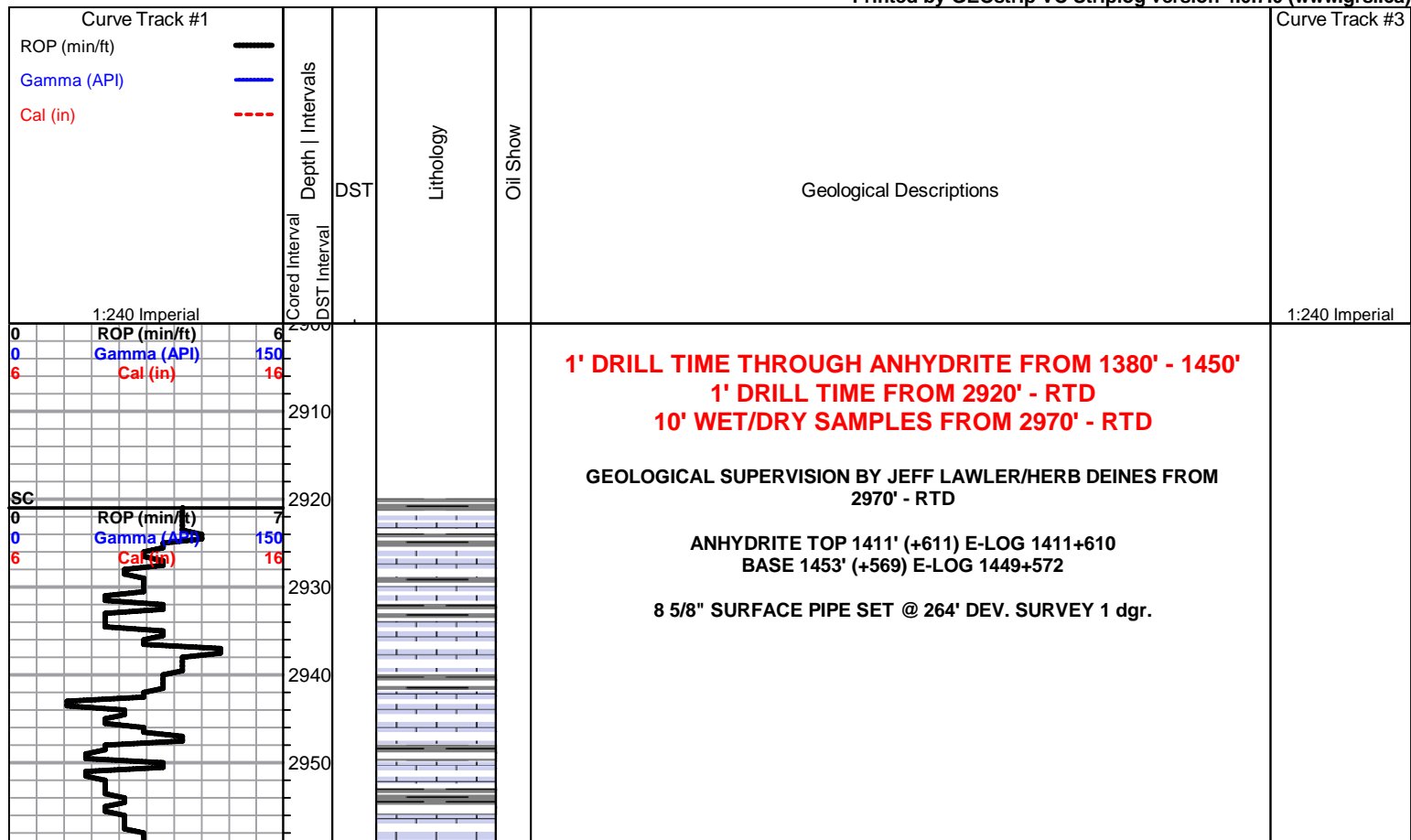
9-16-13 RU, spud 12:00 AM
9-17-13 264', set 8 5/8" surface pipe to 264' w/ 160sxs Common 2%gel
3%CC, plug down 6:45 AM, slope 1 degree, WOC 8 Hrs
9-18-13 1520', drilling
9-19-13 2436', drilling
9-20-13 2970', drilling
9-21-13 3365', drilling
9-22-13 3698', drilling, RTD 3720'@8:19AM, short trip, TOWB, logs, TIWB,
LDDP to plug and abandon
9-23-13 3720', tear down

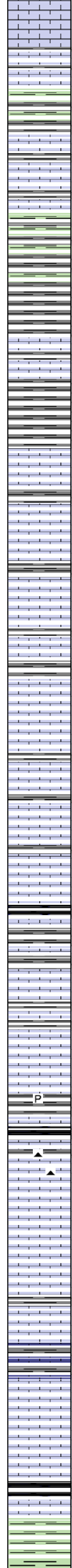
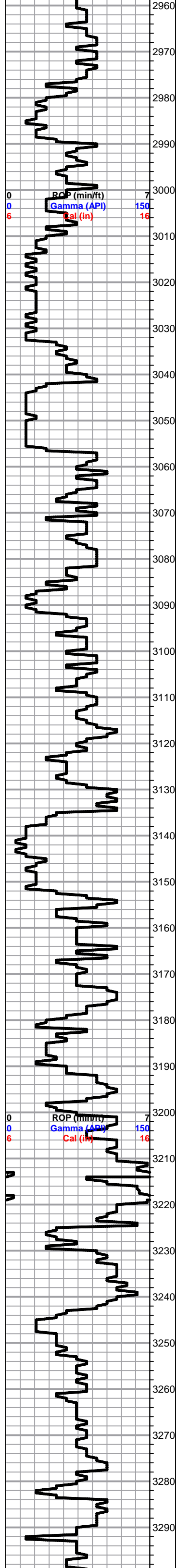
ROCK TYPES					
	Clystgy		Lmst fw7>		Carbon Sh
	Chtcongl		shale, grn		shale, red
	Lmst fw<7		shale, gry		Shcol
					Lscongl
					Calc Dol

ACCESSORIES	
MINERAL	
▲ Chert, dark	
P Pyrite	
△ Chert White	

OTHER SYMBOLS	
DST	
	DST Int
	DST alt

Printed by GEOstrip VC Striplog version 4.0.7.0 (www.grsi.ca)





Lm- Cream Buff, FXLN, dense, well cemented, fsl w/ few sctrd fusulinids, sl dev. w/ sctrd fn ppt & XLN porosity, barren

Sh- Maroon Lm Green, gritty & earthy, sl calcareous, soft white chalk

Lm- Gray Buff, FXLN, dense, well cemented, high-energy bioclastic mix, some chalky in part & crumbley, all dense w/ minimal vis. porosity

Shale, lt-med gray, soft blocky

Lime, lt brn, fnxln-granular, moderately fossiliferous grading into calcareous gray shale

Shale, lt gray-lime green, forming soft mud

Lime, lt-med brn, fnxln, fossiliferous in part

Shale, lt-med gray, soft blocky to soft sticky clumps in part

TOPEKA 3056-1035 E-LOG 3054-1033

Lime, lt-med brn, fnxln, fossiliferous-fusulinids and crinoids segments

Lime, lt-med brn-grayish brn, fnxln-granular, fossiliferous

Lime, lt-med brn, fn-vfxln, some micritic, slightly fossiliferous

Lime, lt-med brn-grayish brn, fnxln, scattered bedded chalk

Lime, tan, granular, NS

Lime, lt-med brn, fnxln, hard on crush

Lime, med brn-grayish brn, fnxln, slightly fossiliferous
Shale, med gray, calcareous with scattered fossil fragments

Lime, lt-med brn, fn-vfxln

Lime, lt-med brn, fnxln-granular in part, slightly fossiliferous

Shale, med gray, soft blocky
Lime, lt brn-lt grayish brn, fn-vfxln, slightly fossiliferous

Lime, tan-lt brn, granular, sticy chalk clumps in part, NS

Lime, lt brn, granular grading into vfxln

Shale, black carbonaceous, blocky

Shale, gray, calcareous
Lime, lt-med brn, fnxln-granular in part, slightly fossiliferous

Lime, lt brn, fn-micro xln, sticky chalk clumps in part , slightly fossiliferous

Lime, tan-lt brn, fnxln-granular, slight bedded chalk with sticky clumps

Lime, lt-med brn, fn-micro xln

Shale, med-dark gray, pyritic in part

Shale, black carbonaceous

Lime, tan-lt brn, fn-vfxln
Chert, tan, fossiliferous

Lime, white-med brn, fn-vfxln, bedded chalk in part

○ Lime, tan-lt brn, fnxln-granular, one chip granular,pyritic w/ SFO on crush, No Odor

Lime, lt-med brn-grayish brn, fnxln, gray mottling near shale boundary

○ Lime, crm, mostly fn-vfxln, few chips with scattered pinpt porosity, spotty stain, No Odor

Lime, lt-med brn, fnxln, dark brn lime, fnxln in part

Lime, lt brn, fnxln, soft on crush, slight bedded chalk, slightly fossiliferous

Lime, tan-lt brn, fnxln, slight bedded chalk, slightly fossiliferous

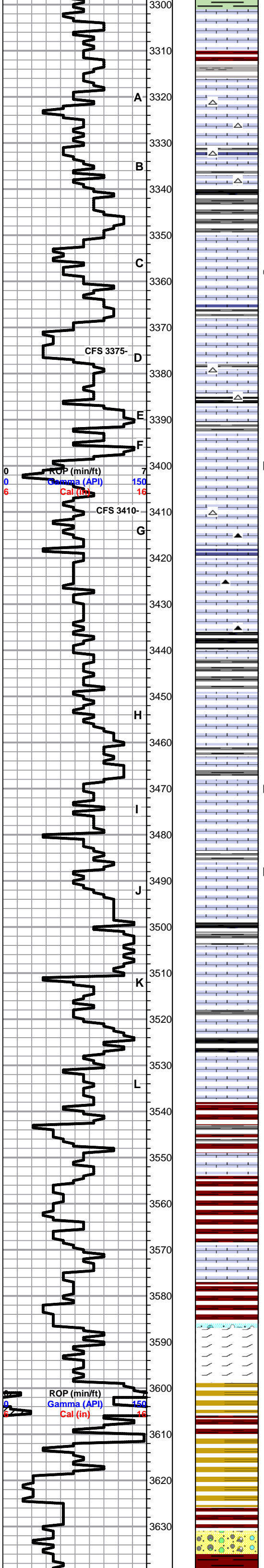
HEEBNER SHALE SPL 3280-1259 ELog 3278-1257

Shale, black carbonaceous, fissile, blocky
Lime, lt brn, micro xln, hard on crush

Shale, lt gray-lime green, forming soft mud

TORONTO SPL 3280-1279 ELog 3284-1280

ADD WEIGHT TO BIT



Lime, crm, fnxln, bedded chalk, NS

LKC SPL 3320-1299 ELog 3316-1295

Lime, crm-tan, fnxln, slight bedded chalk, NS

Lime, tan, fnxln-granular, slight bedded chalk
Chert, opaque-tan, fresh sharp

Lime, tan-lt brn, fn-vfxln, slight bedded chalk, cherty

Shale, lt-med gray, soft blocky with lime green shale in part forming soft mud

Lime, tan-lt brn, fn-micro xln, slight bedded chalk

O Lime, lt brn, fn-vfxln, slight bedded chalk, NFO, No Odor

Shale, gray-dark gray, soft blocky, calcareous near lime boundary

Lime, tan-lt brn, bedded chalk, white chert

Lime, lt brn, micro xln, slight bedded chalk
Shale, black carbonaceous, soft blocky

D Lime, tan-lt brn, fnxln, slightly fossiliferous and fn oolitic, lt spotty stain, NFO, No Odor

G Lime, crm-med brn, fn-micro xln, slight bedded chalk
Chert, white-brn, fresh, sharp

Lime, crm-lt brn, fn-micro xln, slight bedded chalk,
Chert, med brn, fresh, sharp

Lime, lt-med brn, fn-micro xln, slight bedded chalk
Chert, med brn, fresh, sharp

Shale, black carbonaceous, soft, blocky

H Lime, crm-lt brn, fn-micro xln, slight bedded chalk

Shale, gray-dark gray, soft blocky, calcareous near lime boundaries

D Lime, white-tan, fn-vfxln, dead oil flakes in fine, scattered poorly developed porosity at top of bench, NFO, No odor

Lime, brn, fn-vfxln
Shale, med gray, soft blocky

D Lime, crm-tan, fnxln, bedded chalk, dead flaky stain, NFO, No Odor, scattered interxln and pinpoint vuggy porosity. poorly developed zone

Shale, black carbonaceous-dove gray soft mud

Lime, crm-tan, micro xln

Lime, lt brn, fnxln, brittle, NS, some bedded chalk in part

Lime, tab, fnxln-granular in part, bedded chalk, NS

BKC ELog 3538-1517

Shale, reddish brn-med gray, soft blocky

Lime, tan-lt brn, fn-micro xln

Shale, reddish brn, soft blocky lt red wash

Lime, crm, fnxln

Shale, reddish brn, soft blocky, lt red wash

Lime, crm-tan, fnxln, dolomitic, some reworked on top boundary

Shale, vari color with deep red wash

Shale, red, soft blocky

Shale, vari color with increasing vari color cherts

Red wash with sticky red shale clumps

Cherts, vari colored
Red shale wash

