

**PIONEER**



Pioneer Energy Services

Sector Bond / Gamma Ray  
CCL Log

API No.

15-165-22001-00-00

Company Samuel Gary Jr. And Associates

Well Tuzicka NO. 3-23

Field Wildcat

County Rush State Kansas

Location 420' FSL 2250' FWL

Other Services  
Mast Trailer

Sec: 23 Twp: 16 S Rge: 16 W

Elevation

Permanent Datum Ground Level Elevation 1958  
Log Measured From Kelly Bushing 10' Ft. Above Perm. Datum  
Drilling Measured From Kelly Bushing

K.B. 1968  
D.F. 1967  
G.L. 1958

Run Number One

Date Survey 1/04/2013

Date Cementing 12/16/2012

Type Cementing Operation Primary

Depth Driller 3650

Depth Logger 3594

Logged Interval 3594 to 2050

Casing Driller 5.5" @ T.D. @

Float Collar -- D.V. Tool // // //

Squeeze Depth // // //

Amount & Type Cement // // //

Amount & Type Admix // // //

Type Fluid In Hole Water

Fluid Level Full

Salinity PPM CL // // //

Weight lb/gal -- Vis. // // //

Approx. Logged Cement Top 2195

Calculated Cement Top // // //

Max. Hole Temperature 114

Tool No. RBT 4-4

Spacing Recorded 3-5

Equipment -- Location 14 Hays

Recorded By A Dreiling

Witnessed By Mr. Lee Biebertle Jr.

<<< Fold Here >>>

All interpretations are opinions based on inferences from electrical or other measurements and we cannot and do not guarantee the accuracy or correctness of any interpretation, and we shall not, except in the case of gross or willful negligence on our part, be liable or responsible for any loss, costs, damages, or expenses incurred or sustained by anyone resulting from any interpretation made by any of our officers, agents or employees. These interpretations are also subject to our general terms and conditions set out in our current Price Schedule.

Comments

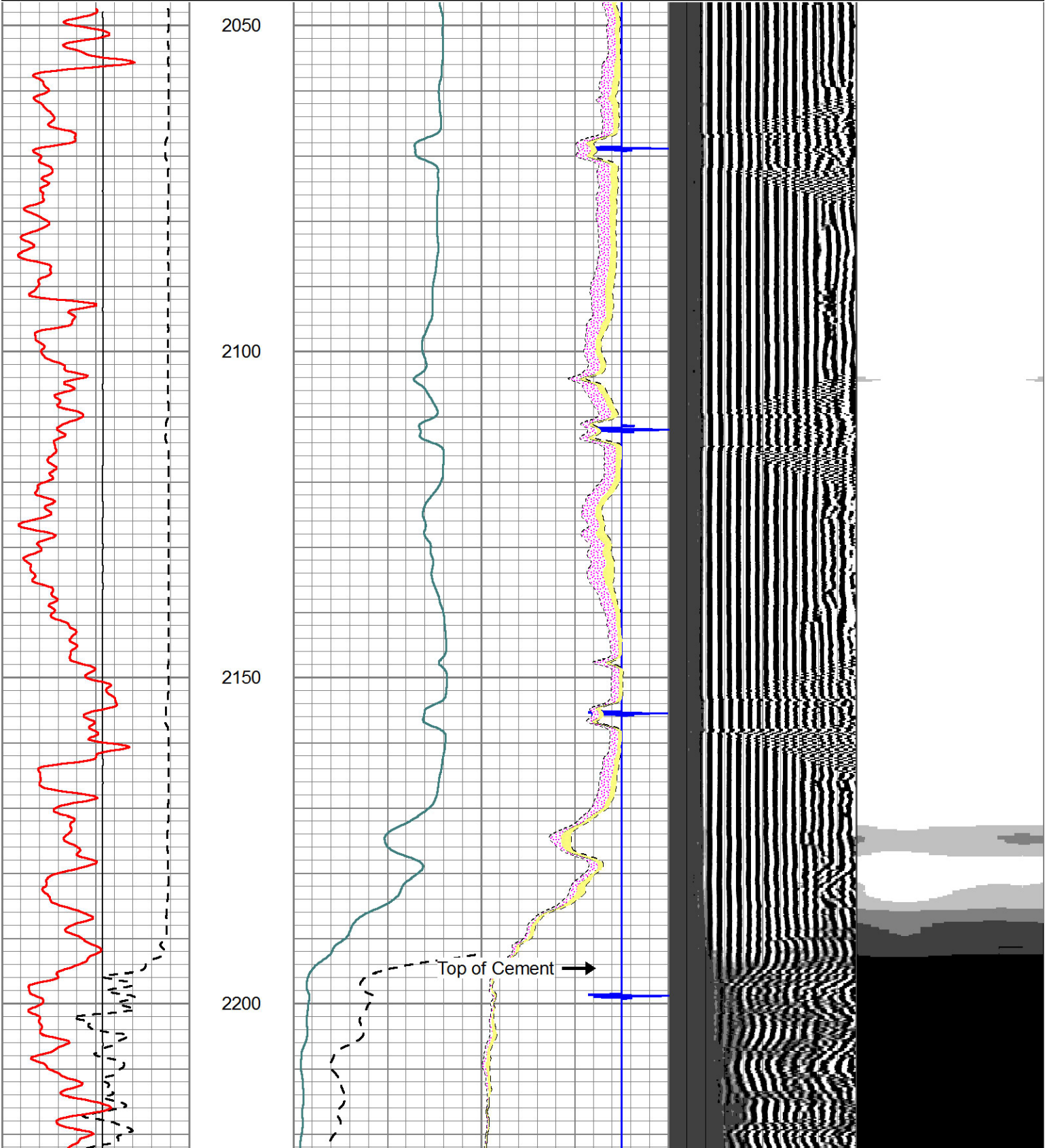
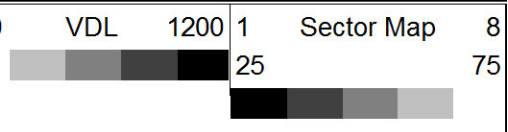
Thank you for using Pioneer Energy Services  
785.625.3858

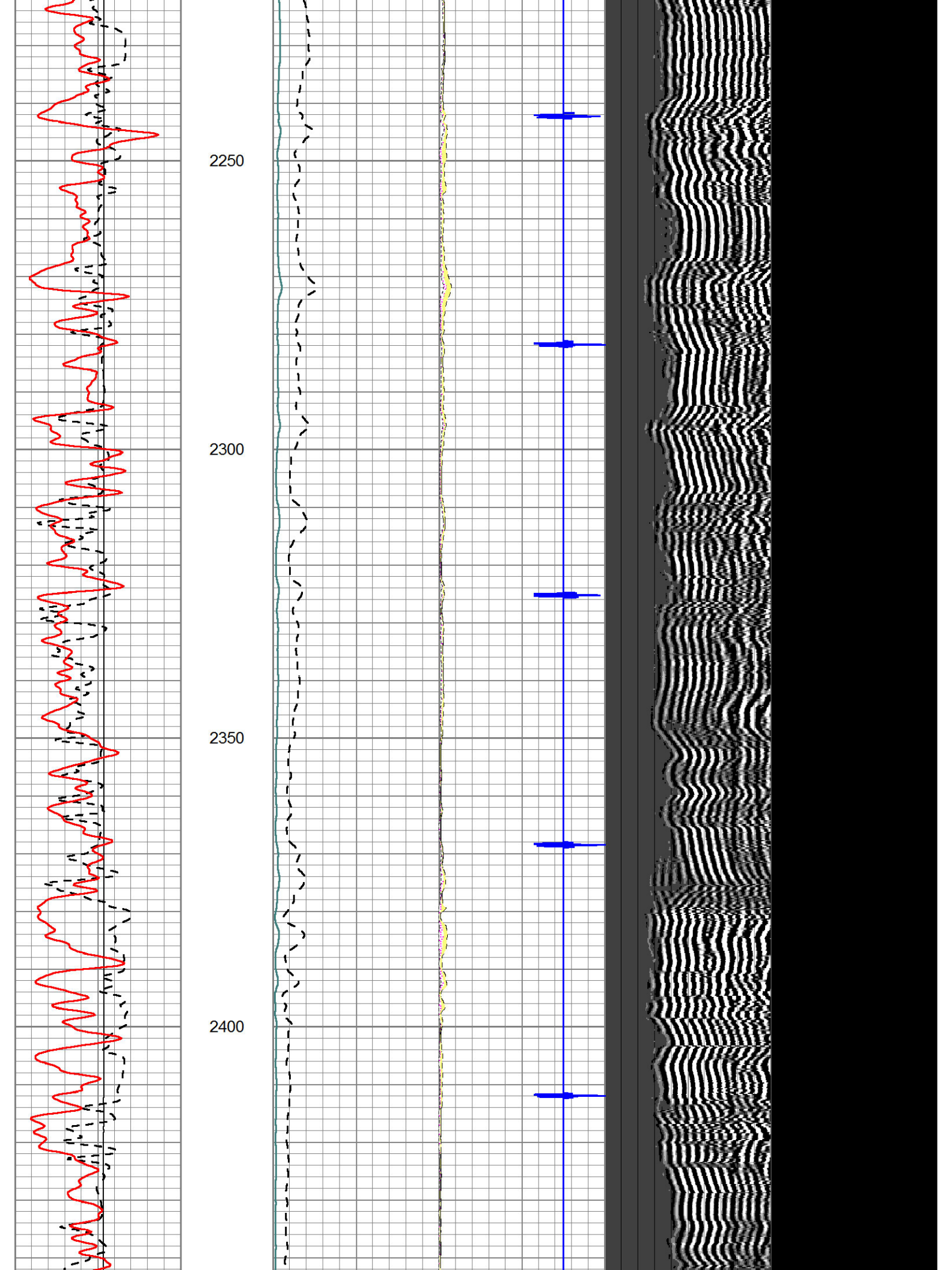
Galatia Ks.  
5 3/4 W,  
N Into

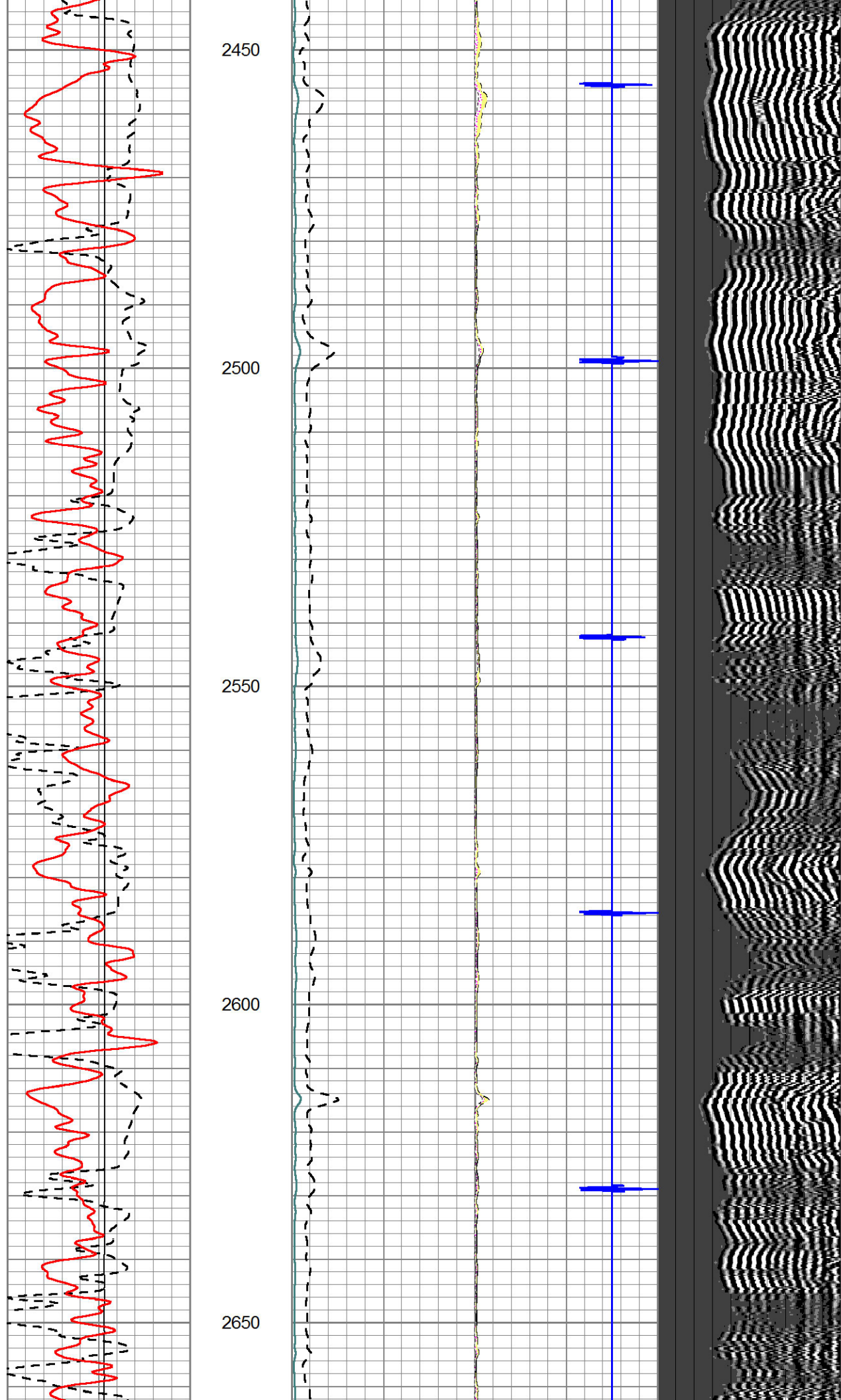
Database File: sam-gary\_tuzicka\_3-23.db  
 Dataset Pathname: sgrcbl/pass2.1  
 Presentation Format: scbl  
 Dataset Creation: Fri Jan 04 11:03:45 2013 by Calc 7.0 B1  
 Charted by: Depth in Feet scaled 1:240

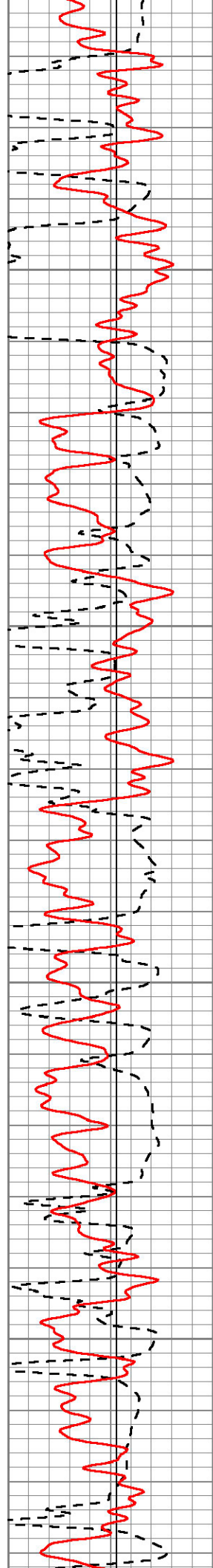
TT3FT		
700 (usec)	235	
-----		
LTEN		
0 GR	150	

0 Amplitude (mV)	100	0 AMPAVG	150
-----		-----	
Amplified Amplitude		0 AMPMAX	150
0 (mV)	20	0 AMPMIN	150
-----		-----	
		3 CCL	-1







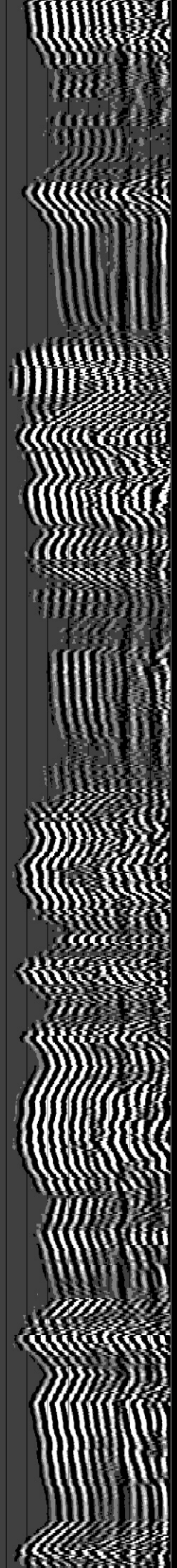
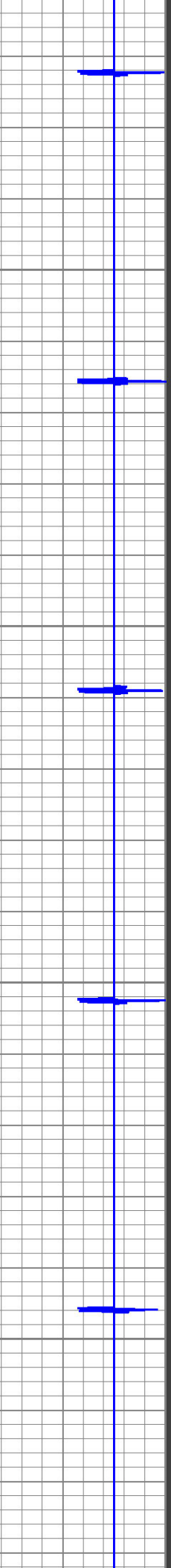
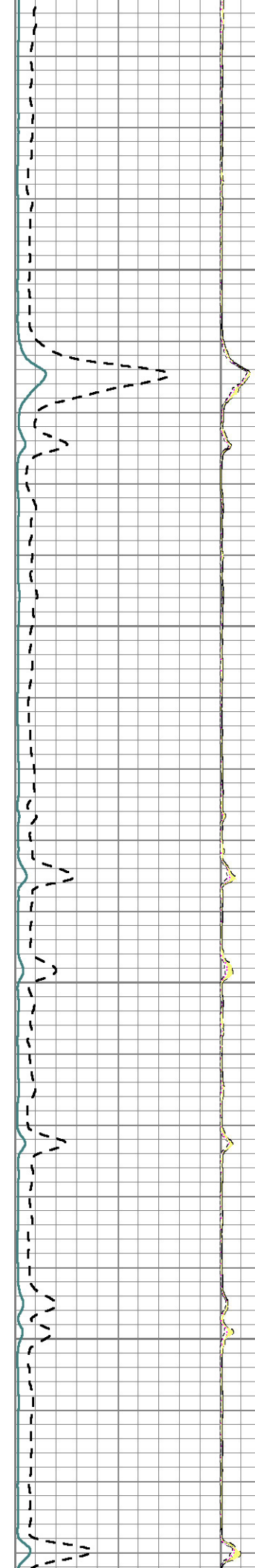


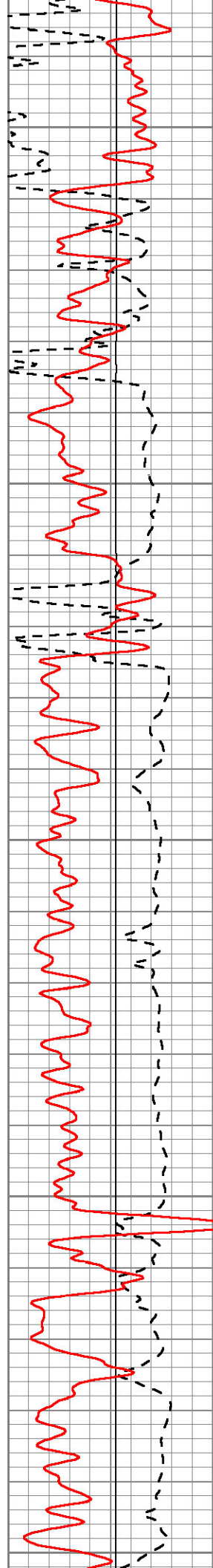
2700

2750

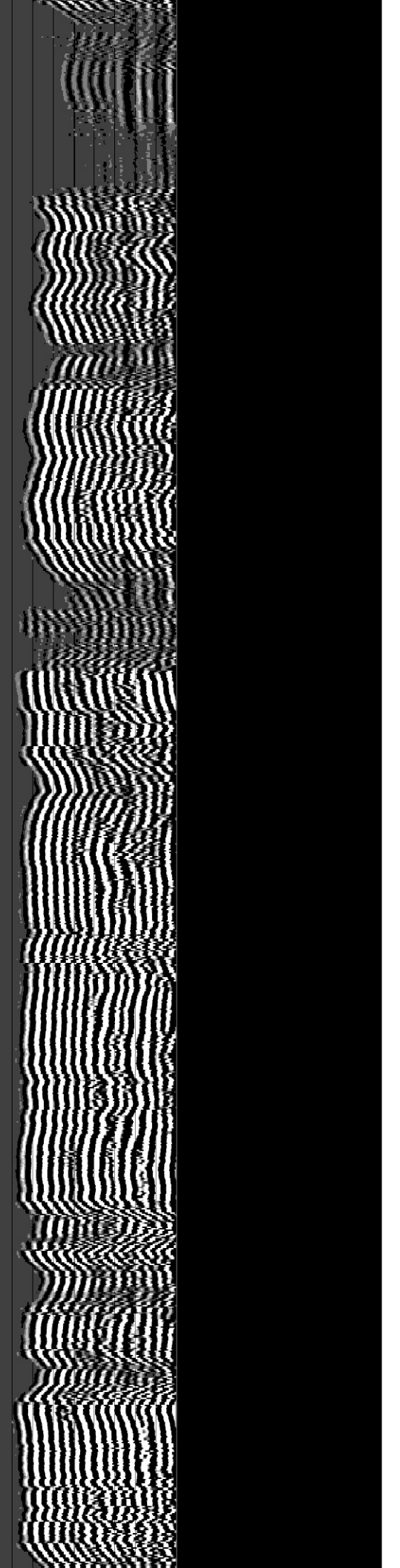
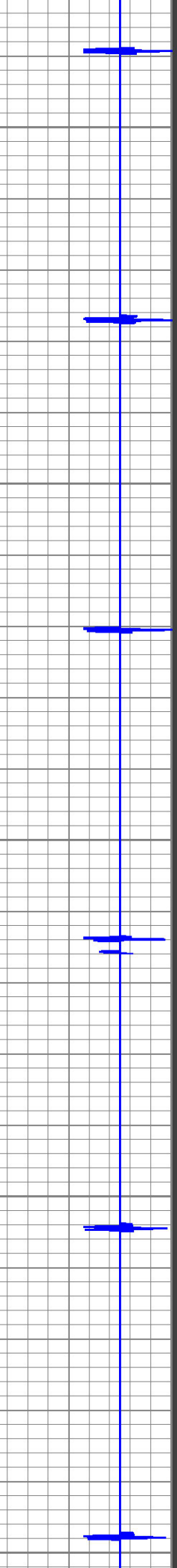
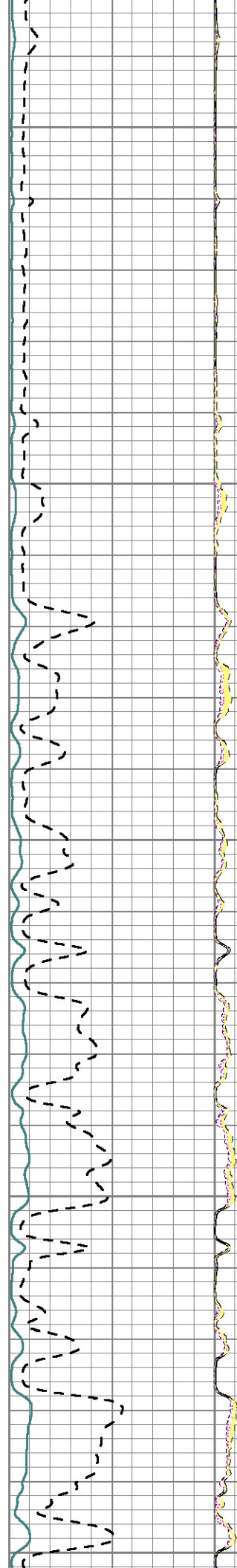
2800

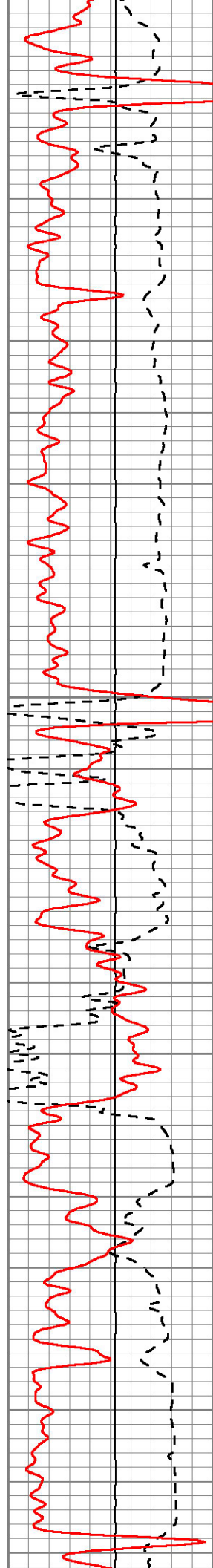
2850





2900  
2950  
3000  
3050  
3100



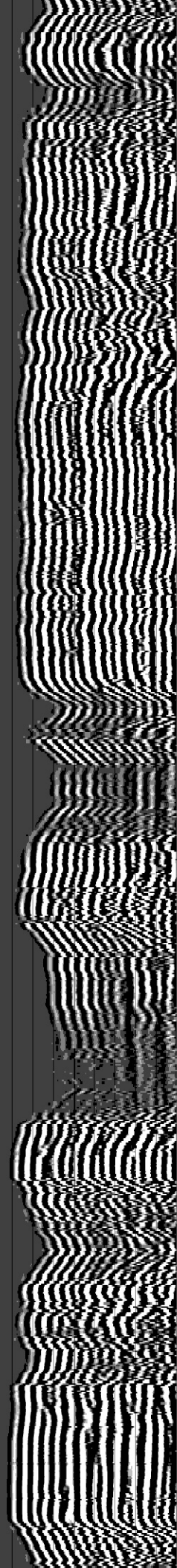
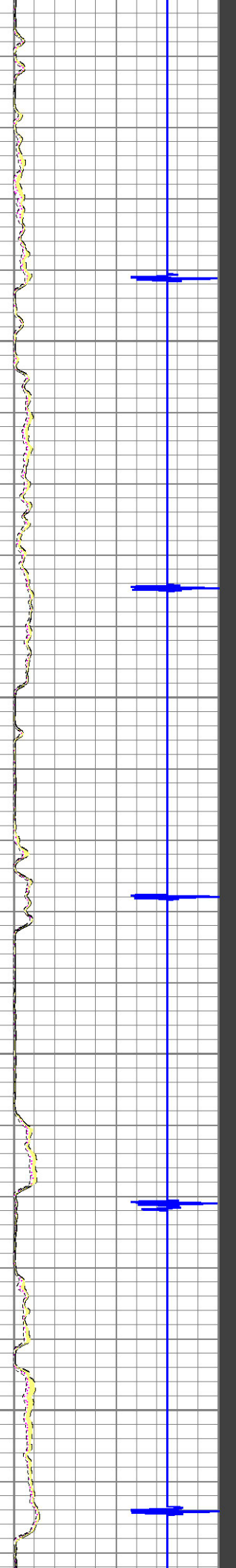
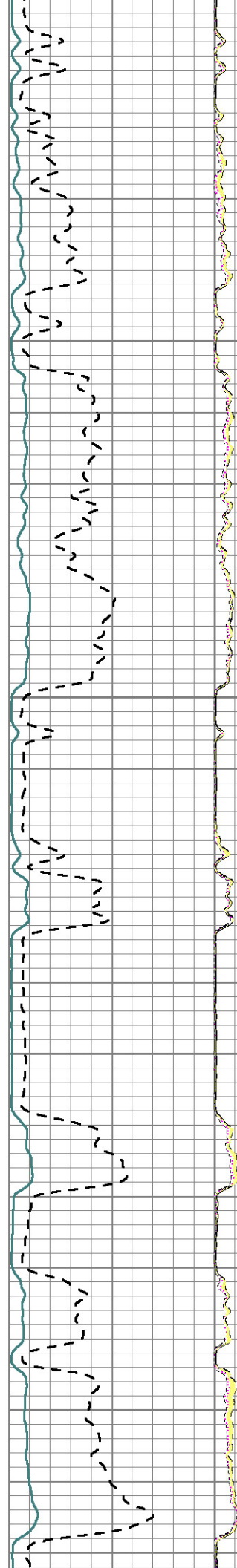


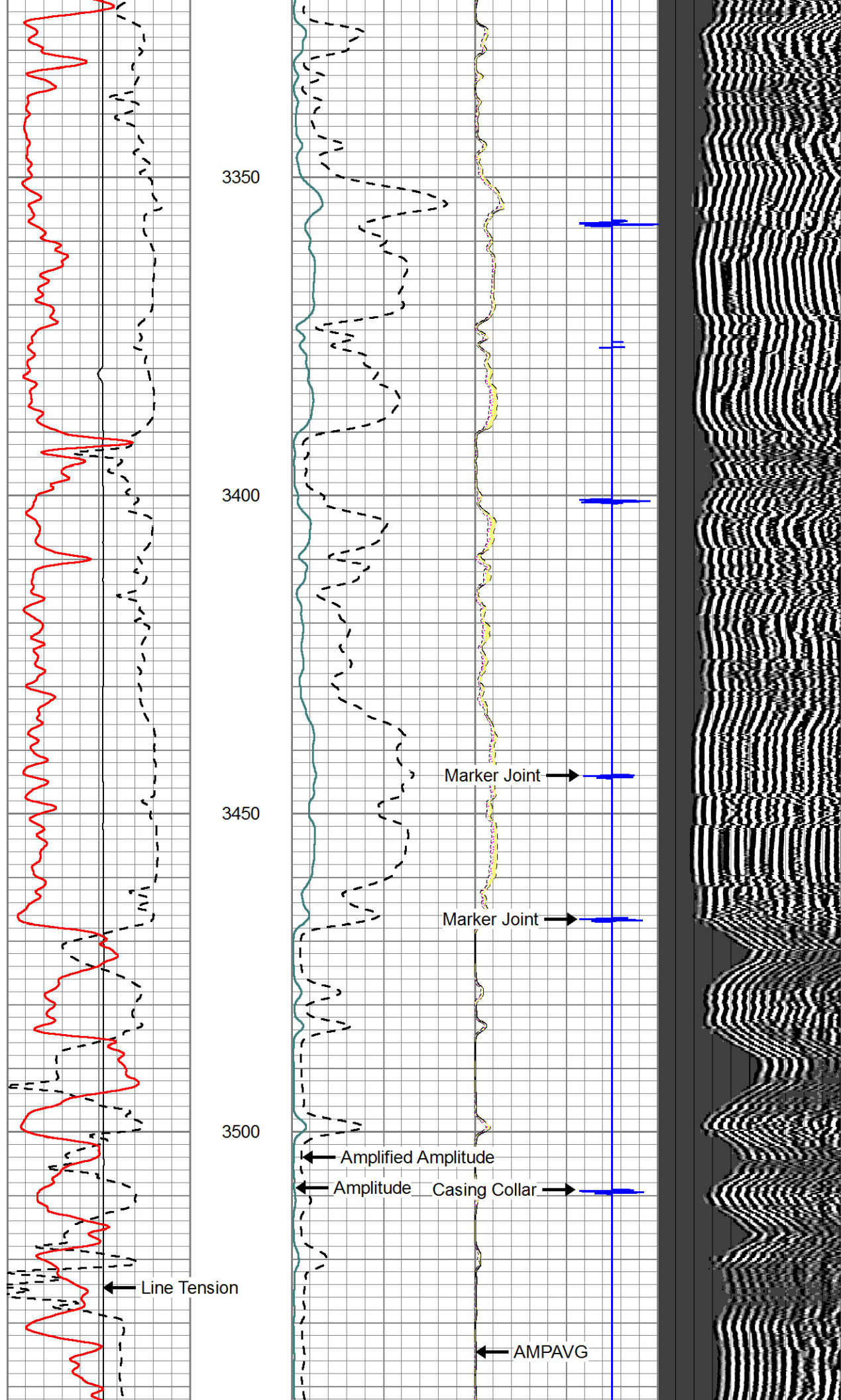
3150

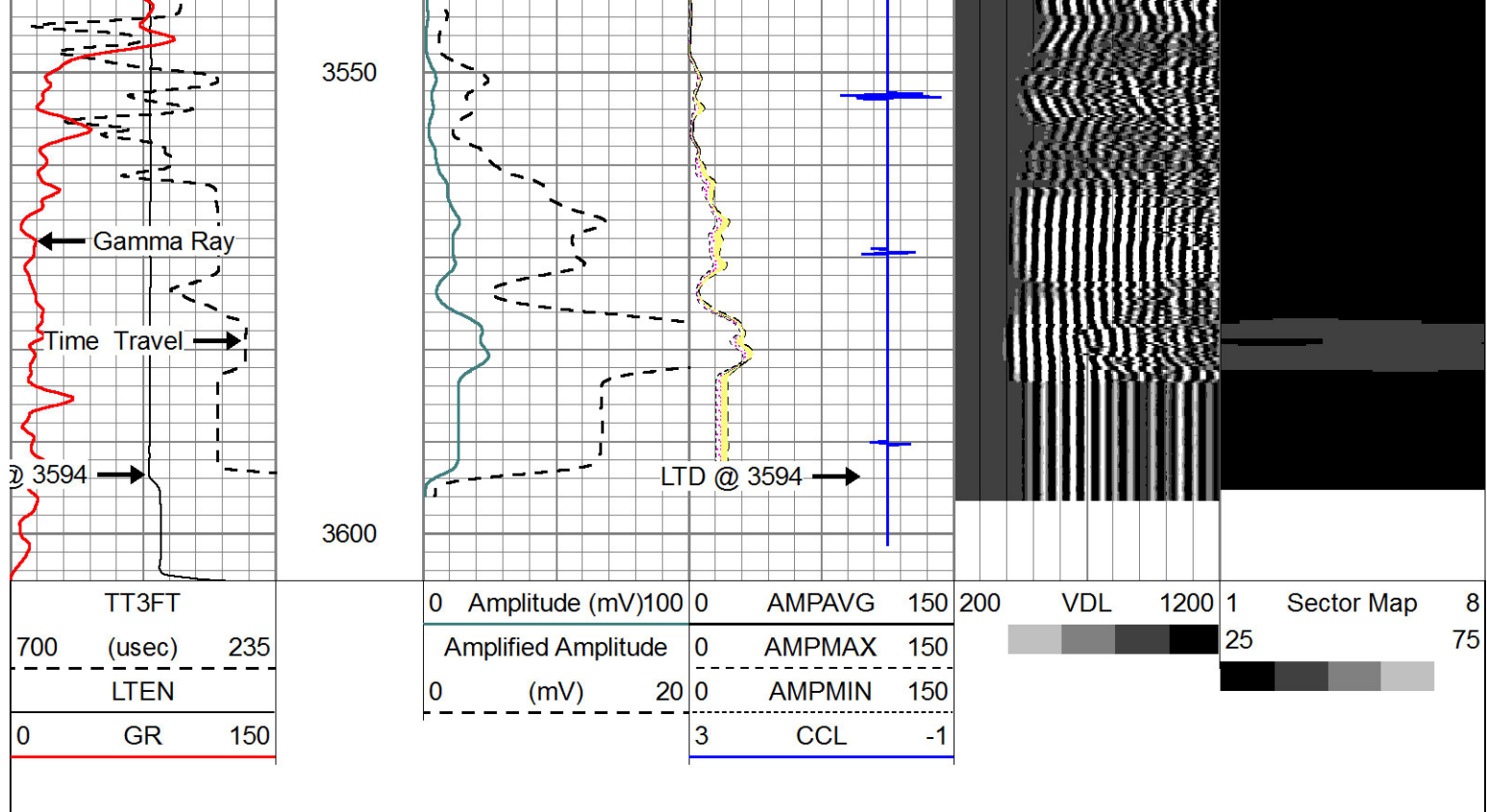
3200

3250

3300

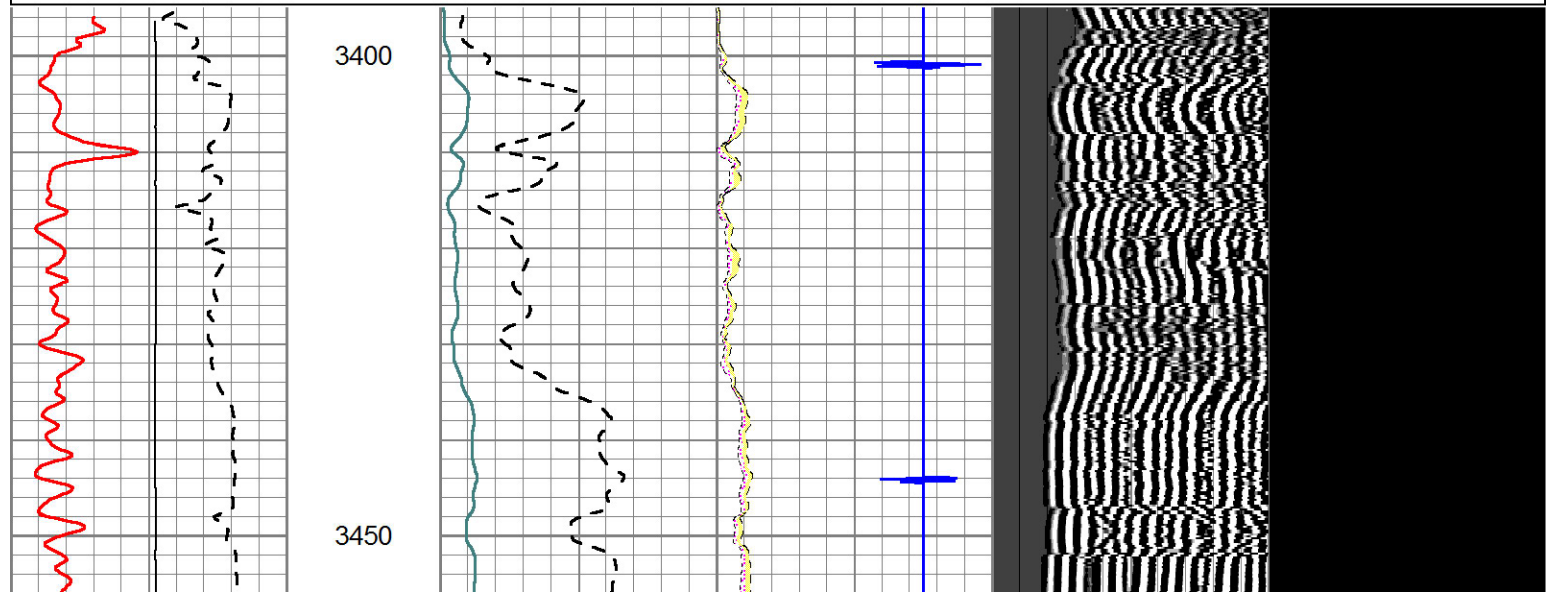
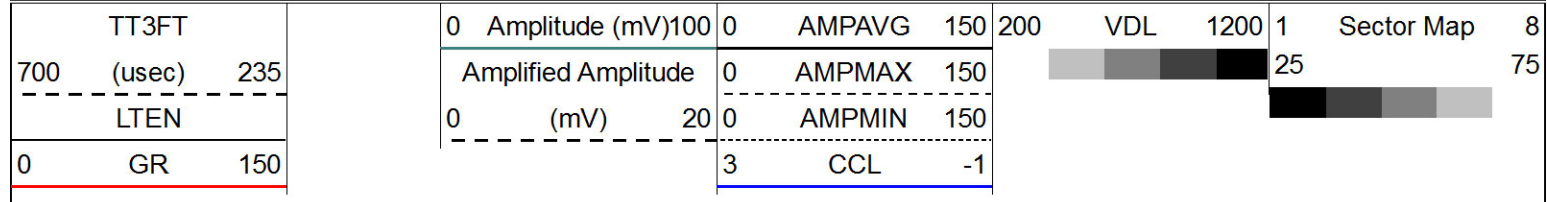


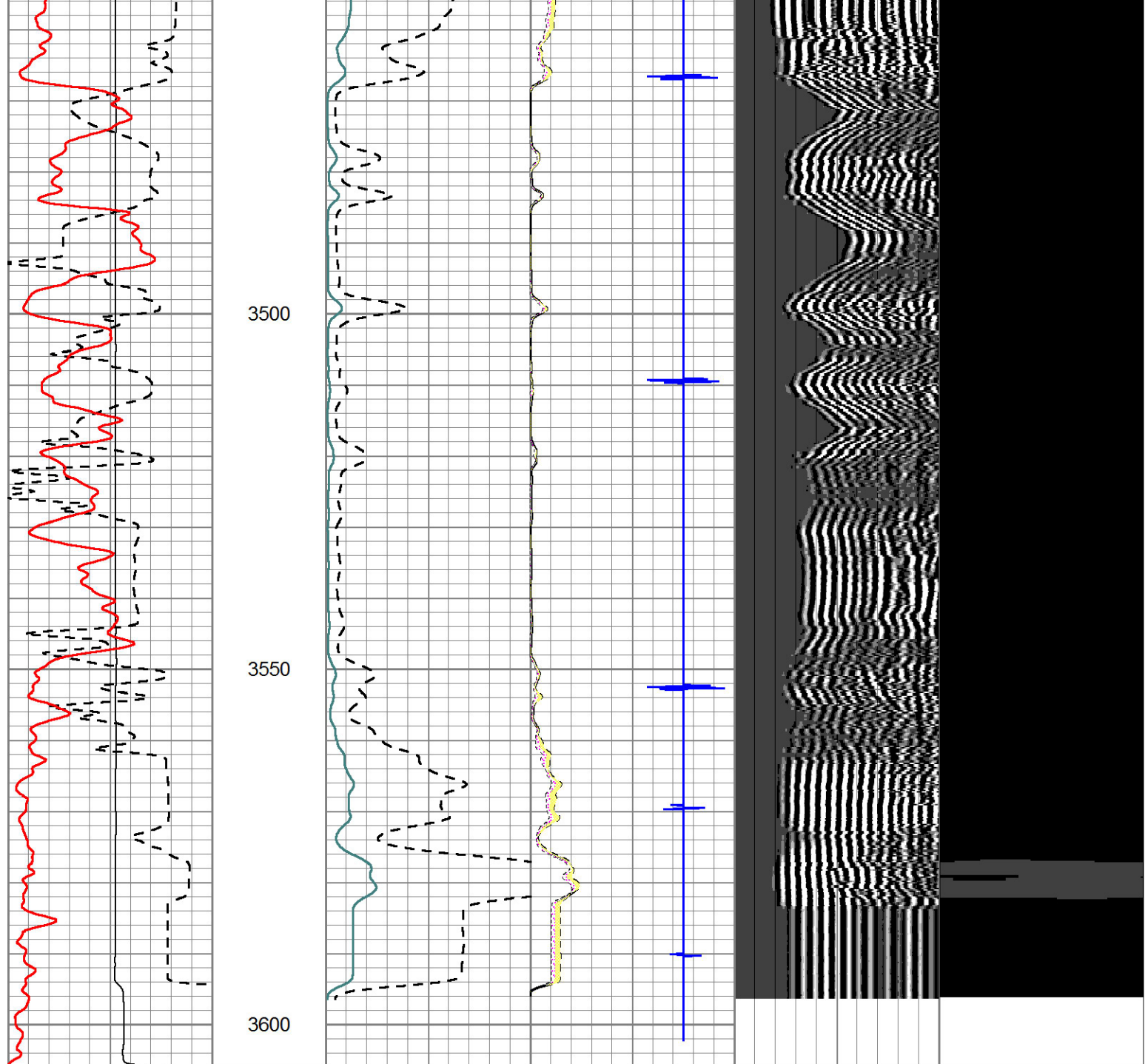




# Repeat Section

Database File: sam-gary\_tuzicka\_3-23.db  
 Dataset Pathname: sgrcbl/pass 1.1  
 Presentation Format: scbl  
 Dataset Creation: Fri Jan 04 10:52:10 2013 by Calc 7.0 B1  
 Charted by: Depth in Feet scaled 1:240





TT3FT		
700	(usec)	235
-----		
LTEN		
0	GR	150
-----		

0	Amplitude (mV)	100	0	AMPAVG	150	
-----		Amplified Amplitude		0	AMPMAX	150
0	(mV)	20	0	AMPMIN	150	
-----		3		CCL	-1	

200	VDL	1200	1	Sector Map	8
-----		25		75	

