



**MICRO
RESISTIVITY
LOG**

Company Triple Crown Operating, LLC. Well Jordan #2-4 Field Forrester County Ness State Kansas	Company Triple Crown Operating, LLC. Well Jordan #2-4 Field Forrester County Ness State Kansas
Location: API #: 15 135 25816 330' FSL & 2310' FEL	
SEC 4 TWP 18S RGE 24W Permanent Datum Ground Level Elevation 2306' Log Measured From KB 7' AGL Drilling Measured From KB	
Other Services CDNL DIL	
Elevation K.B. 2313' D.F. 2312' G.L. 2306'	

Date	12-1-14
Run Number	Two
Depth Driller	4430'
Depth Logger	4425'
Bottom Logged Interval	4423'
Top Log Interval	2300'
Casing Driller	8 5/8" @ 230'
Casing Logger	230'
Bit Size	7 7/8"
Type Fluid in Hole	Chemical
Density / Viscosity	9.3/52
pH / Fluid Loss	8.5/8.8
Source of Sample	Pit
Rm @ Meas. Temp	2@55degf
Rmf @ Meas. Temp	1.6@55degf
Rmc @ Meas. Temp	2.56@55degf
Source of Rmf / Rmc	Calculated
Rm @ BHT	.91@120degf
Time Circulation Stopped	9:30 p.m.
Time Logger on Bottom	2:20 a.m.
Maximum Recorded Temperature	120degf
Equipment Number	T173
Location	Hays, KS
Recorded By	L. Smith
Witnessed By	Mr. Rod Anderson

<<< Fold Here >>>

All interpretations are opinions based on inferences from electrical or other measurements and we cannot and do not guarantee the accuracy or correctness of any interpretation, and we shall not, except in the case of gross or willful negligence on our part, be liable or responsible for any loss, costs, damages, or expenses incurred or sustained by anyone resulting from any interpretation made by any of our officers, agents or employees. These interpretations are also subject to our general terms and conditions set out in our current Price Schedule.

Comments

west of ness city to n rd., north to 170th rd., east 1/2, north into

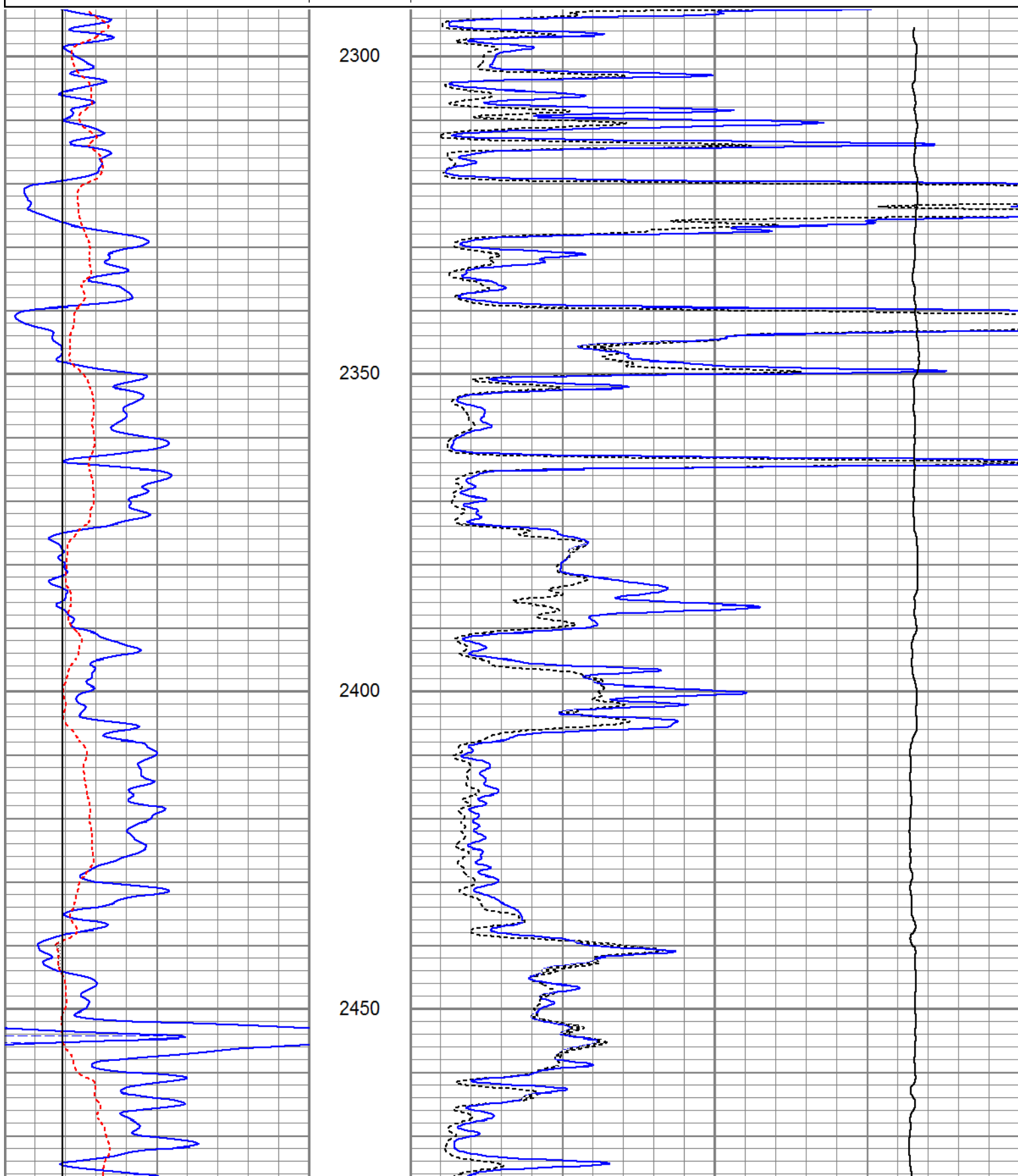


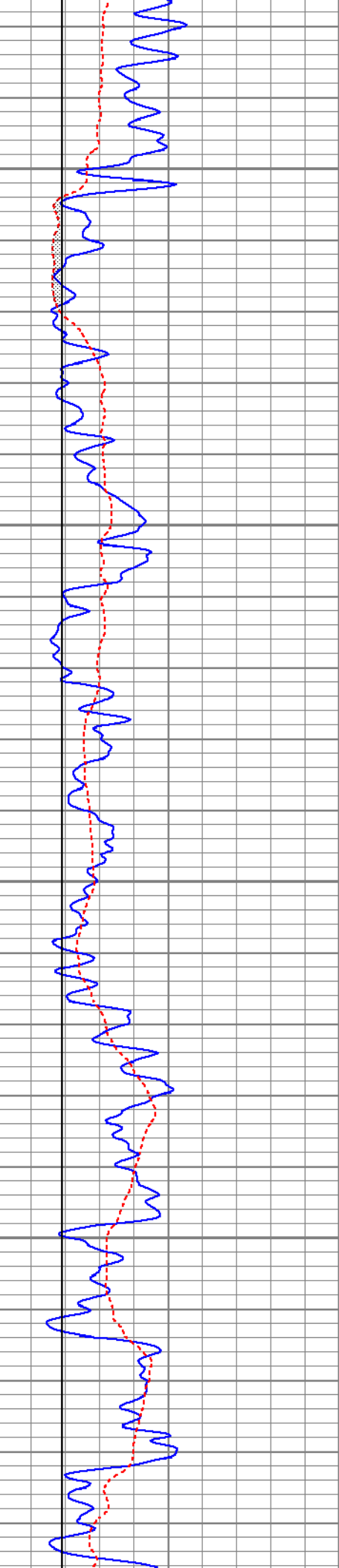
Main Pass

Database File tcjordan#2-4oh.db
 Dataset Pathname pass4.1
 Presentation Format kml
 Dataset Creation Mon Dec 01 03:11:17 2014
 Charted by Depth in Feet scaled 1:240

0	GR (GAPI)	150
6	MCAL (in)	16
6	BOREID (in)	16

0	MN 2" (Ohm-m)	20
0	MI 1" (Ohm-m)	20
10000	LTEN (lb)	0



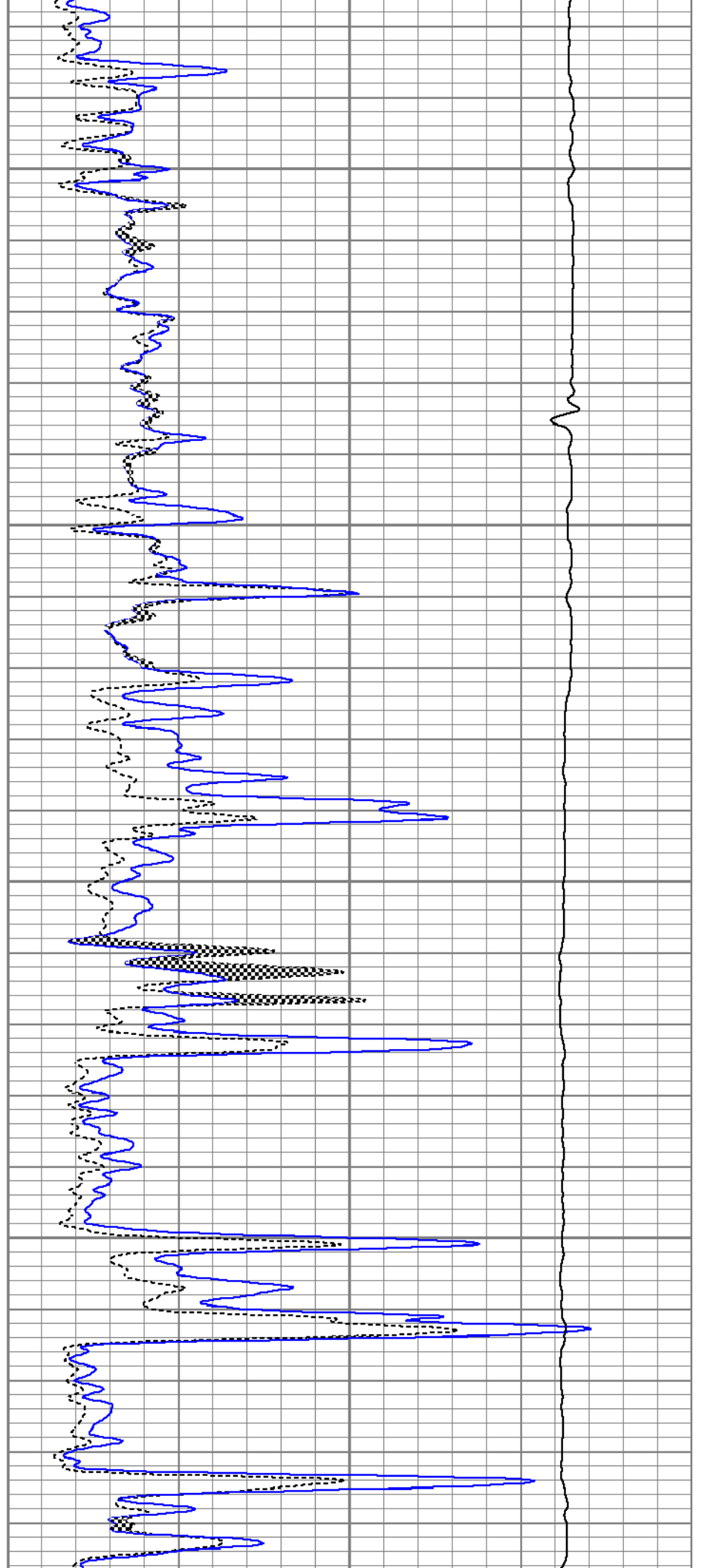


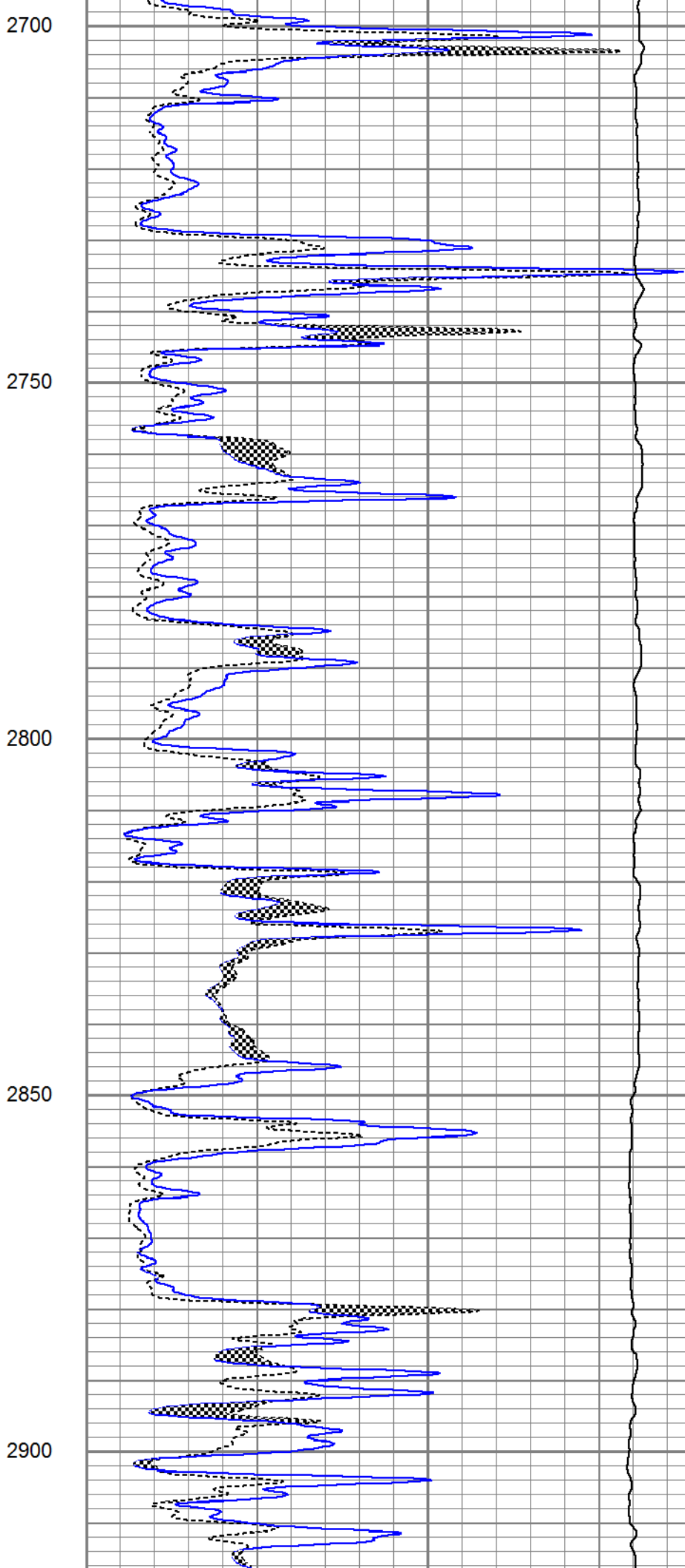
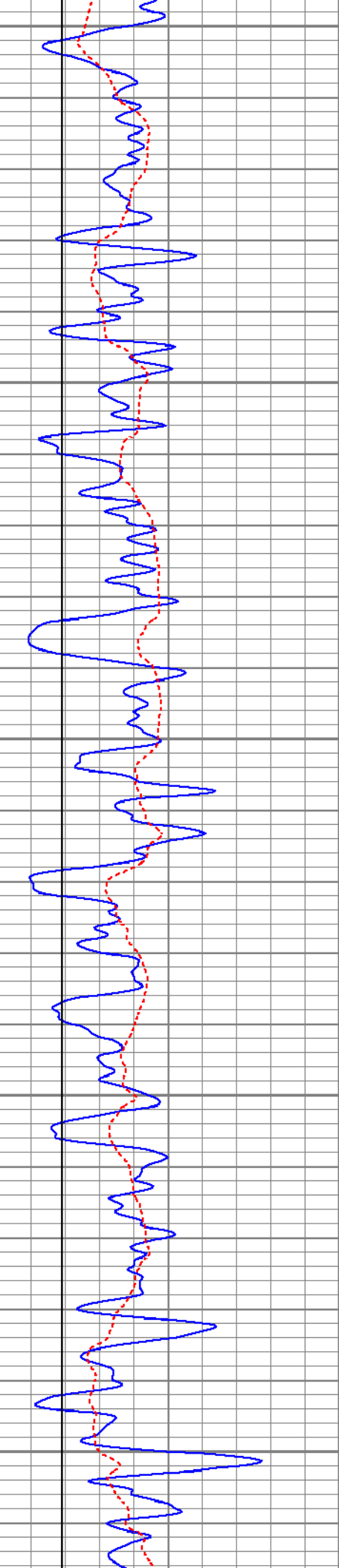
2500

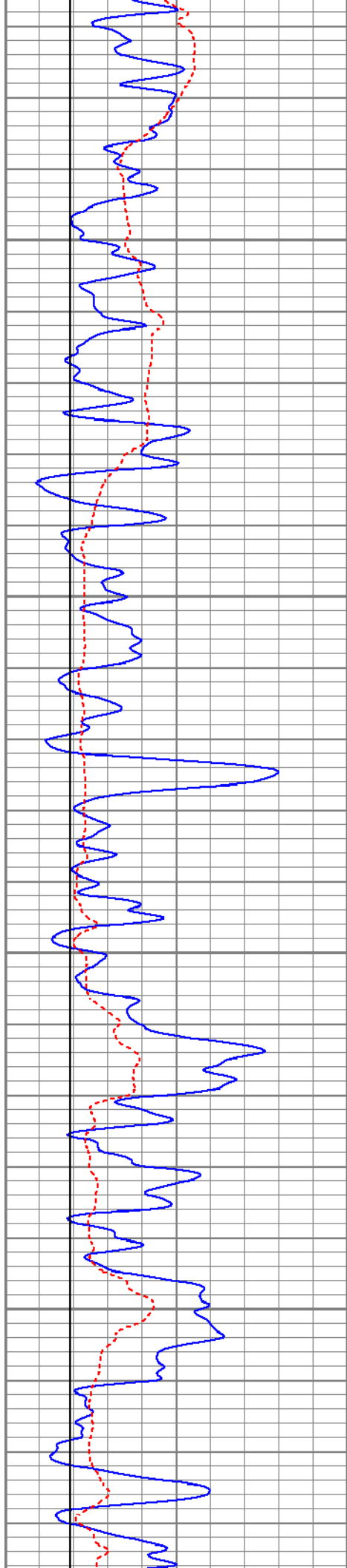
2550

2600

2650





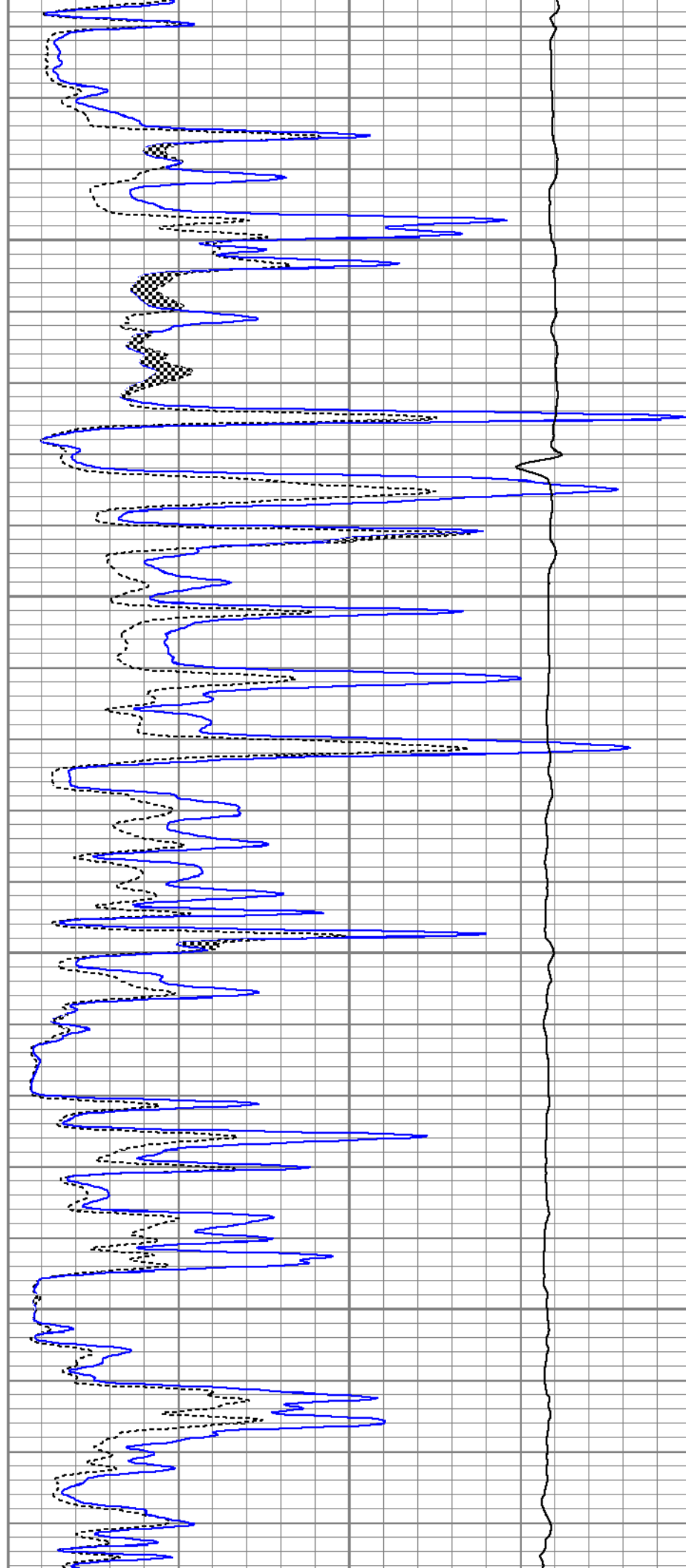


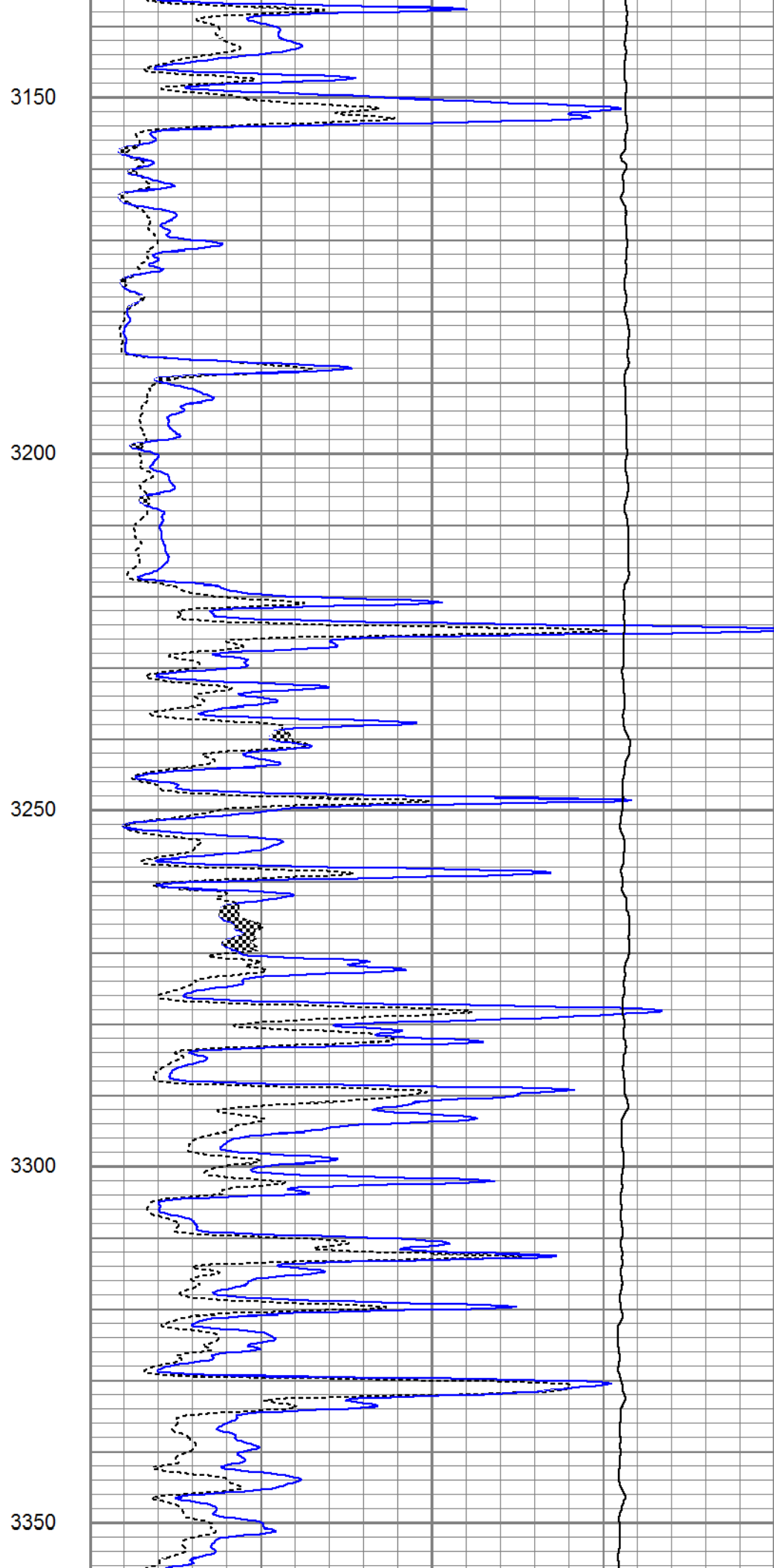
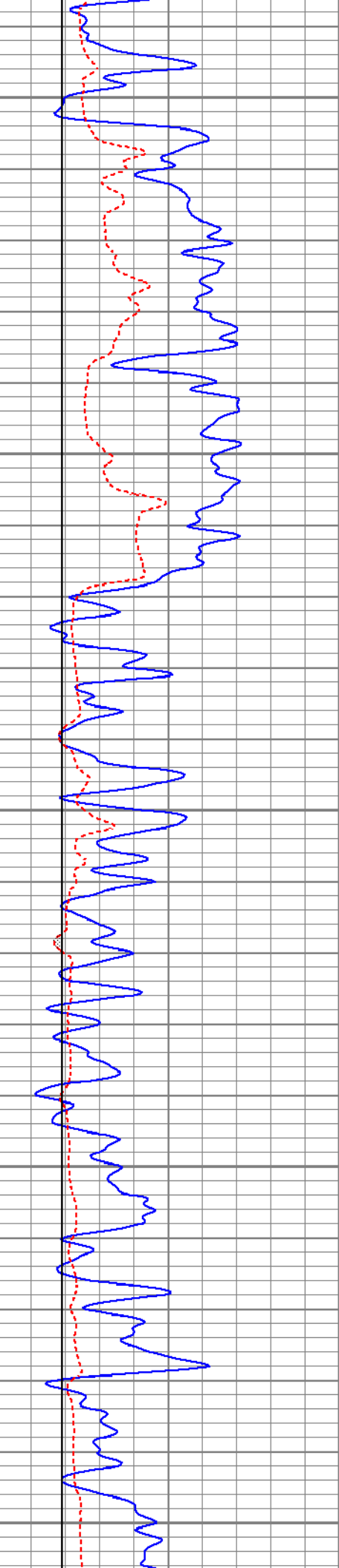
2950

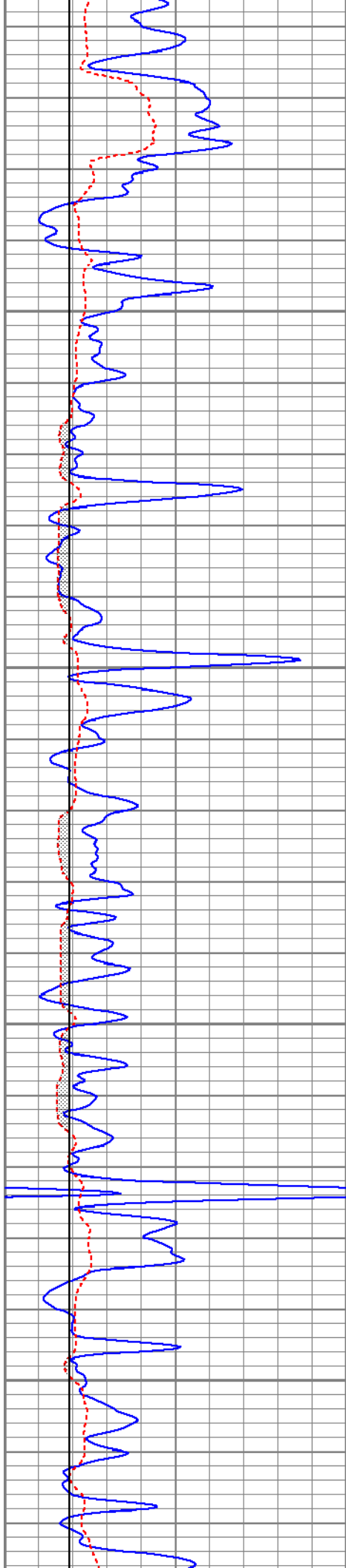
3000

3050

3100





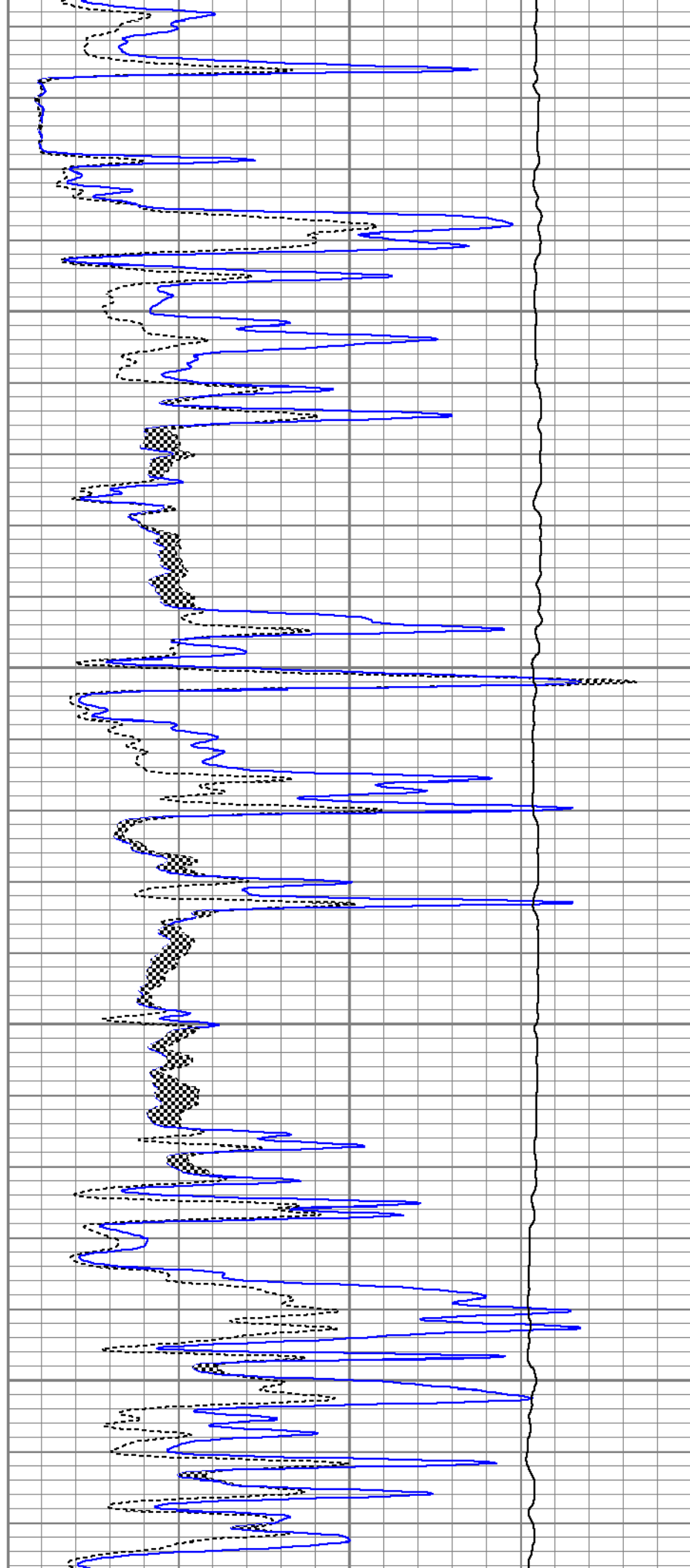


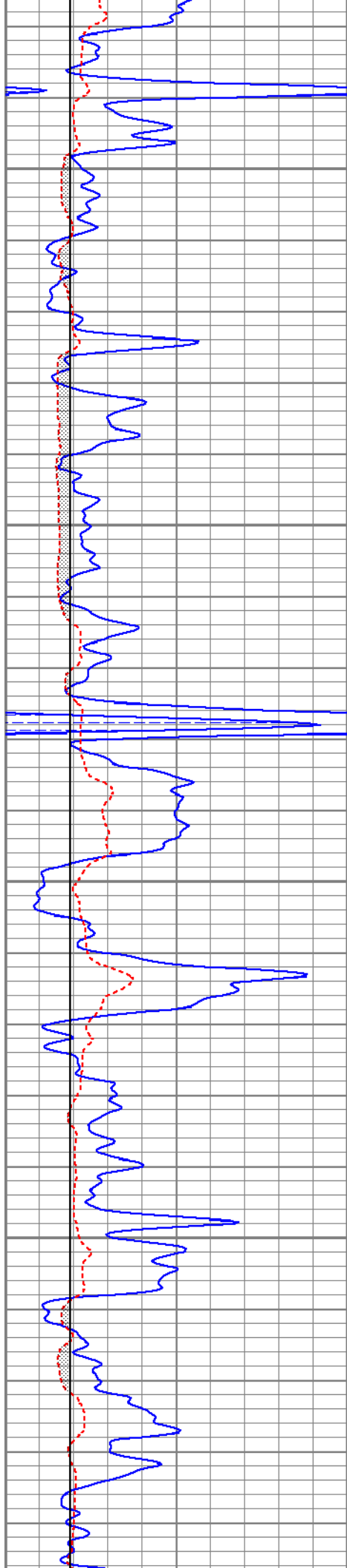
3400

3450

3500

3550



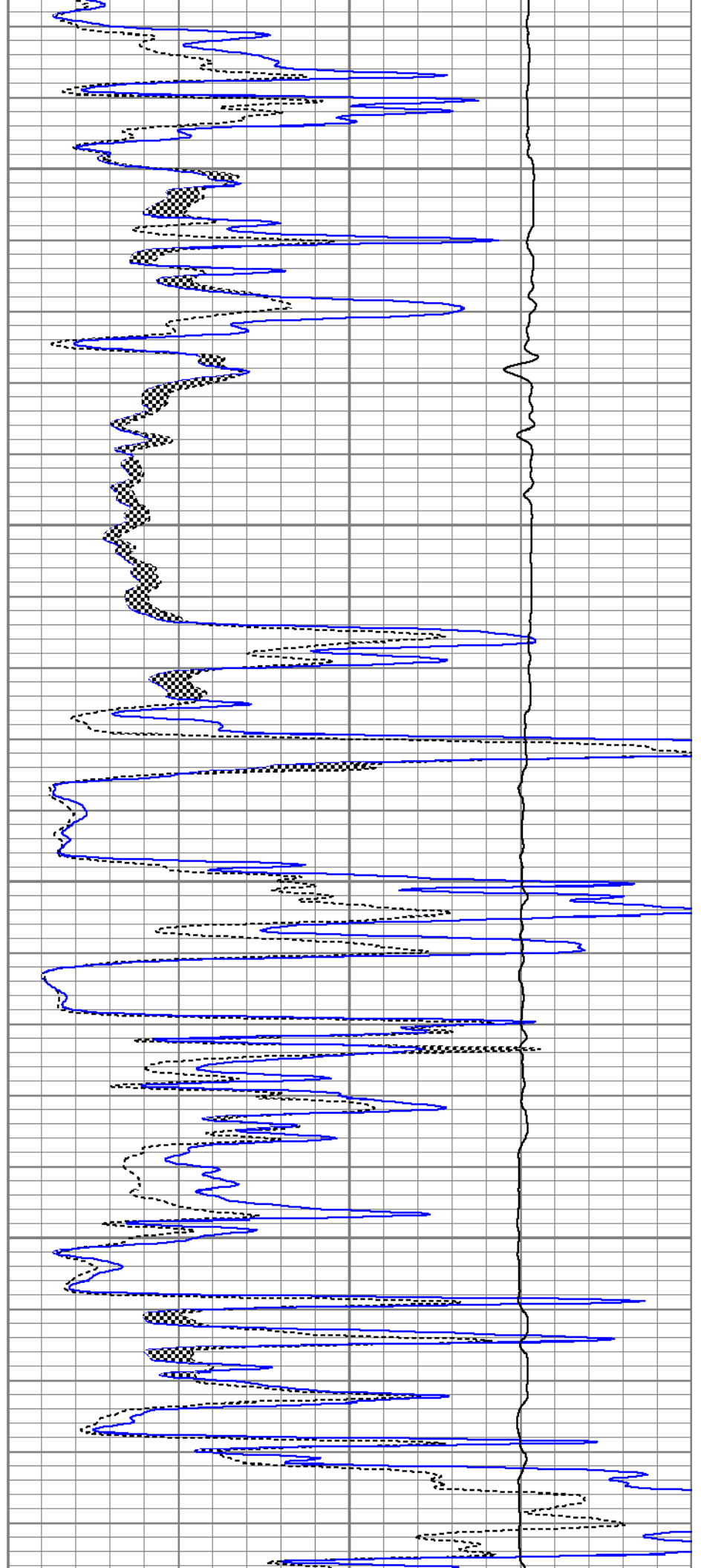


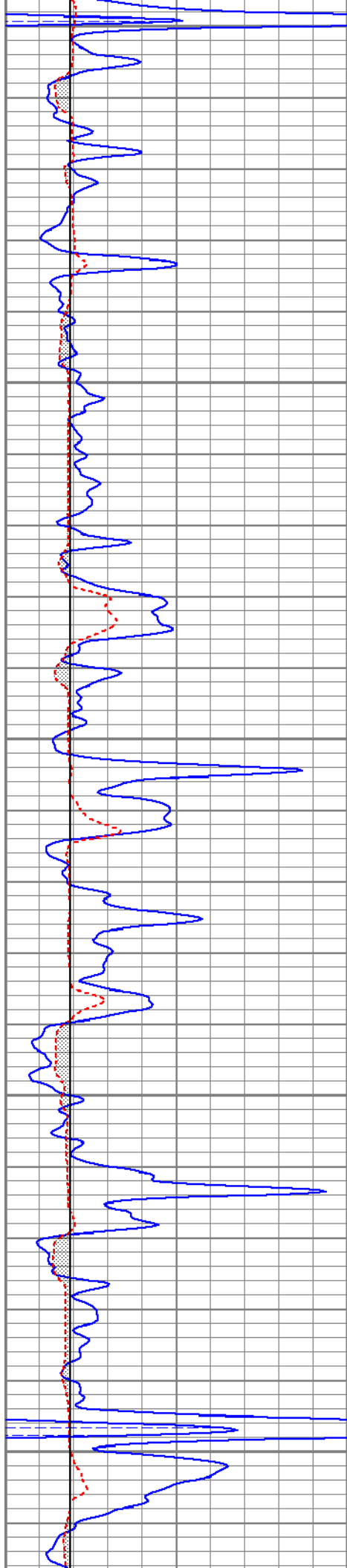
3600

3650

3700

3750





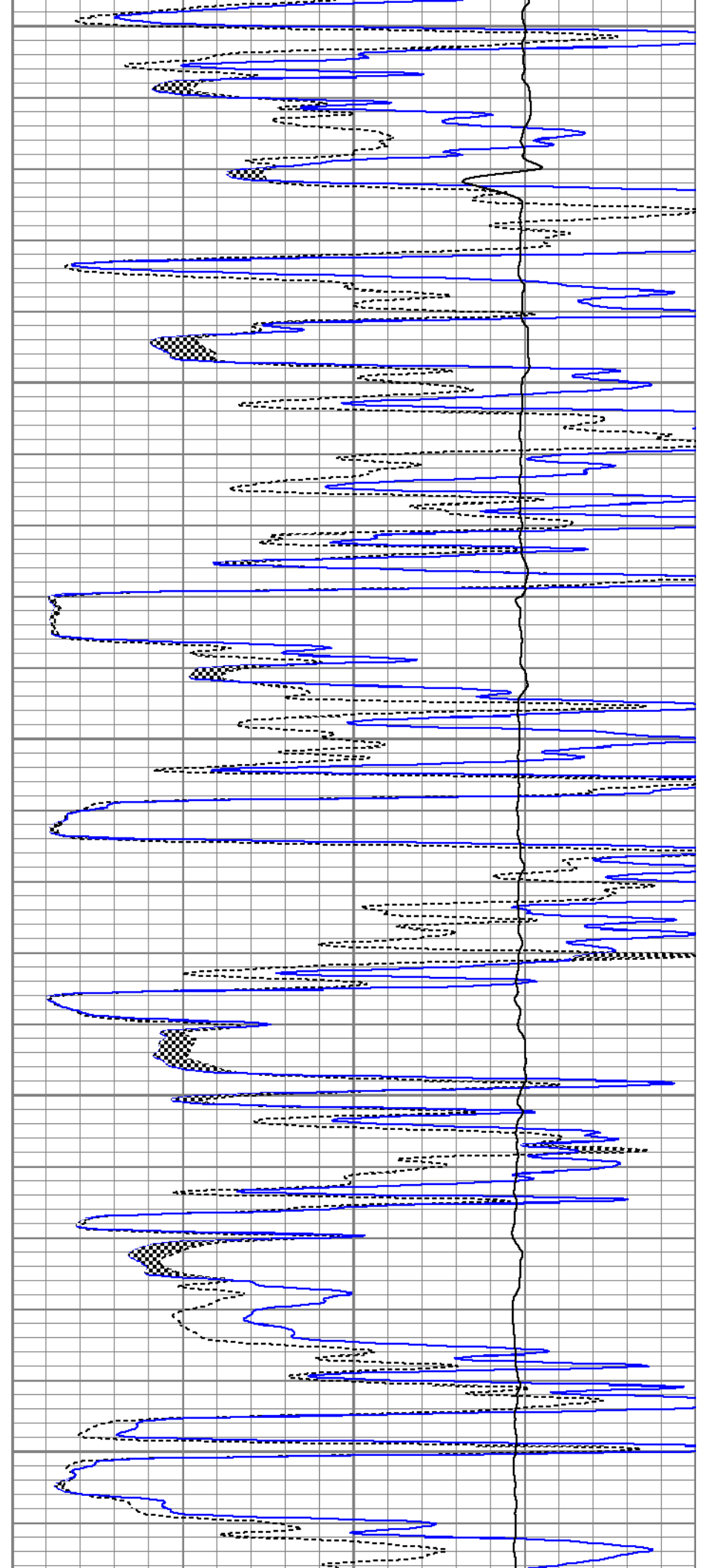
3800

3850

3900

3950

4000



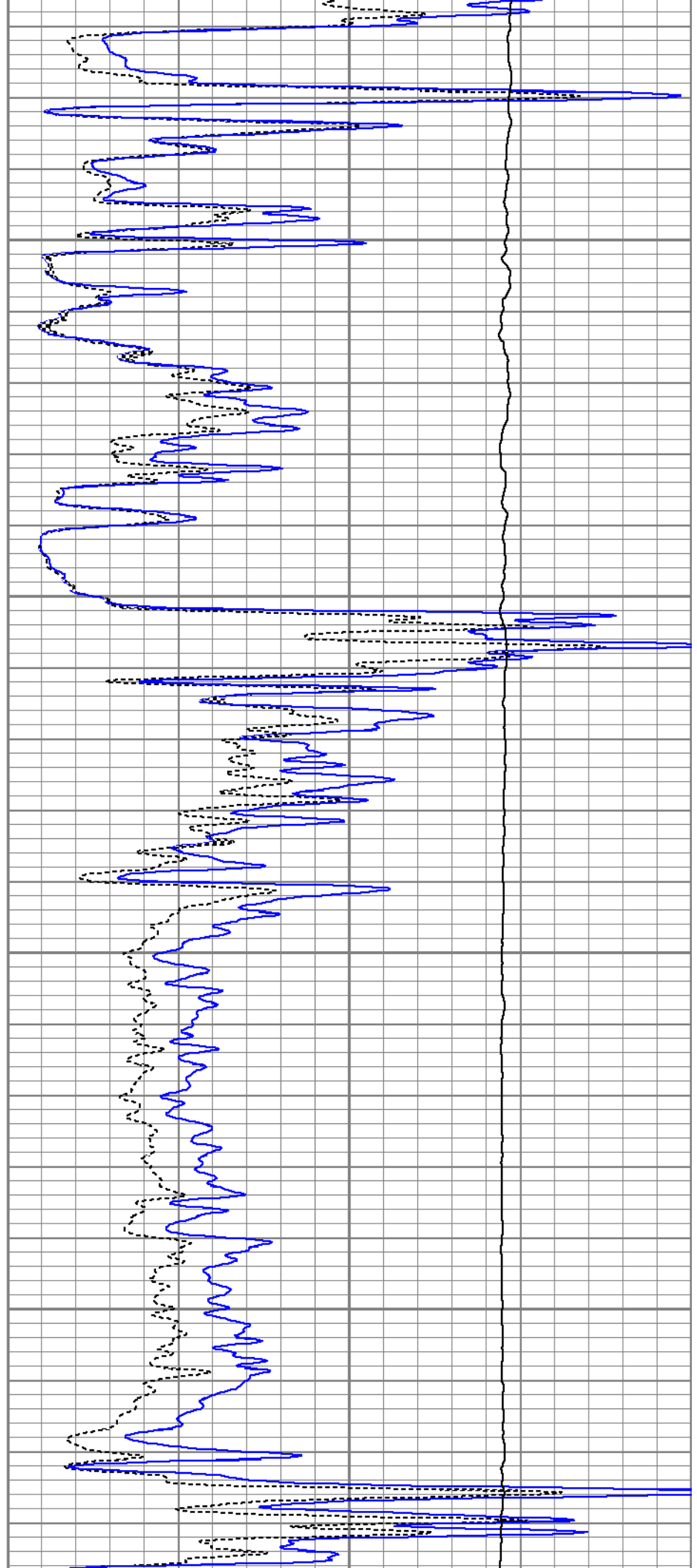


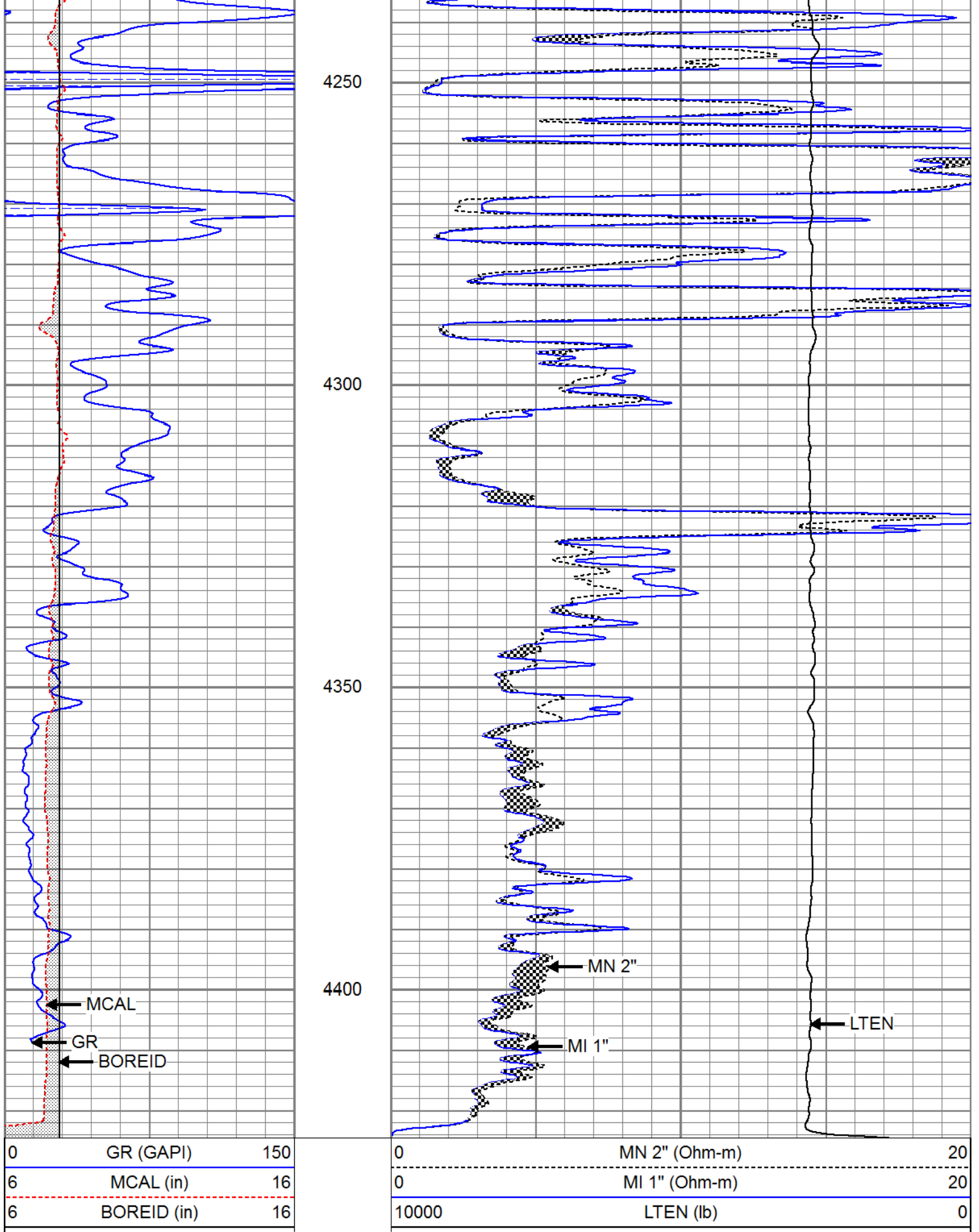
4050

4100

4150

4200





Repeat Pass

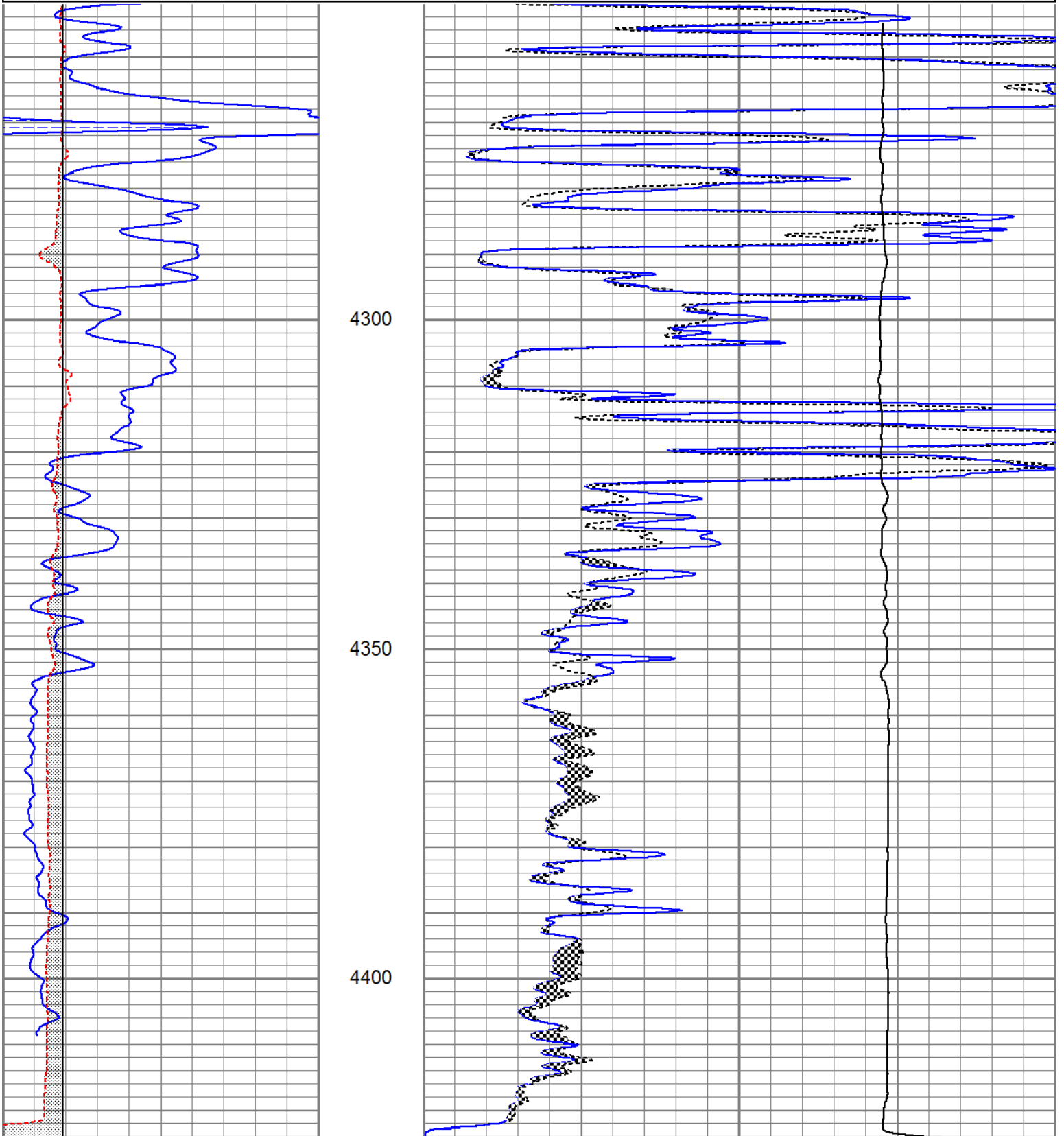


Repeat Pass

Database File tcjordon#2-4oh.db
 Dataset Pathname pass3.1
 Presentation Format kml
 Dataset Creation Mon Dec 01 02:49:59 2014
 Charted by Depth in Feet scaled 1:240

0	GR (GAPI)	150
6	MCAL (in)	16
6	BOREID (in)	16

0	MN 2" (Ohm-m)	20
0	MI 1" (Ohm-m)	20
10000	LTEN (lb)	0



0	GR (GAPI)	150
6	MCAL (in)	16
6	BOREID (in)	16

0	MN 2" (Ohm-m)	20
0	MI 1" (Ohm-m)	20
10000	LTEN (lb)	0

Calibration Report

Database File tcjordon#2-4oh.db
Dataset Pathname pass3.1
Dataset Creation Mon Dec 01 02:49:59 2014

Microlog Calibration Report

Serial-Model: 9151-Gerhart
Performed: Mon Dec 01 02:26:08 2014

	Readings			References			Results	
	Zero	Cal		Zero	Cal		m	b
Normal	-0.0019	0.4767	V	0.0000	10.0000	Ohm-m	20.8945	0.0395
Inverse	-0.0030	0.6174	V	0.0000	8.5000	Ohm-m	13.7003	0.0416
Caliper	0.8560	1.8245	V	7.7000	13.0000	in	5.4720	3.0161

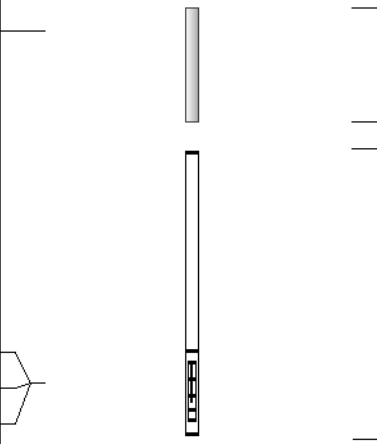
Gamma Ray Calibration Report

Serial Number: 801
Tool Model: 2.75POH
Performed: Mon Dec 01 02:18:59 2014

Calibrator Value: 1.0 GAPI

Background Reading: 0.0 cps
Calibrator Reading: 1.0 cps

Sensitivity: 0.5000 GAPI/cps

Sensor	Offset (ft)	Schematic	Description	Length (ft)	O.D. (in)	Weight (lb)
GR	13.29		GR-2.75POH (801) Probe	3.73	2.75	43.00
			10pin-Probe	0.89	3.50	20.00
			ML-Gerhart (9151) Gerhart Micro	9.46	4.00	125.00
MCAL	1.83					
MI	1.83					
MN	1.83					

Dataset: tcjordon#2-4oh.db: field/well/run1/pass3.1
Total length: 14.08 ft
Total weight: 188.00 lb
O.D.: 4.00 in