



DUAL  
INDUCTION  
LOG

Company	Triple Crown Operating, LLC.	
Well	Jordan #2-4	
Field	Forrester	
County	Ness	
State	Kansas	
Company	Triple Crown Operating, LLC.	
Well	Jordan #2-4	
Field	Forrester	
County	Ness	
State	Kansas	
Location:	API #: 15 135 25816 330' FSL & 2310' FEL	
Permanent Datum	SEC 4 TWP 18S RGE 24W	Ground Level Elevation 2306'
Log Measured From	KB 7' AGL	Other Services CDNL ML Elevation K.B. 2313' D.F. 2312' G.L. 2306'
Drilling Measured From	KB	

Date	12-1-14
Run Number	One
Depth Driller	4430'
Depth Logger	4427'
Bottom Logged Interval	4425'
Top Log Interval	200'
Casing Driller	8 5/8" @ 230'
Casing Logger	230'
Bit Size	7 7/8"
Type Fluid in Hole	Chemical
Density / Viscosity	9.3/52
pH / Fluid Loss	8.5/8.8
Source of Sample	Pit
Rm @ Meas. Temp	2@55degf
Rmf @ Meas. Temp	1.6@55degf
Rmc @ Meas. Temp	2.56@55degf
Source of Rmf / Rmc	Calculated
Rm @ BHT	.91@120degf
Time Circulation Stopped	9:30 p.m.
Time Logger on Bottom	12:00 a.m.
Maximum Recorded Temperature	120degf
Equipment Number	T173
Location	Hays, KS
Recorded By	L. Smith
Witnessed By	Mr. Rod Anderson

<<< Fold Here >>>

All interpretations are opinions based on inferences from electrical or other measurements and we cannot and do not guarantee the accuracy or correctness of any interpretation, and we shall not, except in the case of gross or willful negligence on our part, be liable or responsible for any loss, costs, damages, or expenses incurred or sustained by anyone resulting from any interpretation made by any of our officers, agents or employees. These interpretations are also subject to our general terms and conditions set out in our current Price Schedule.

Comments

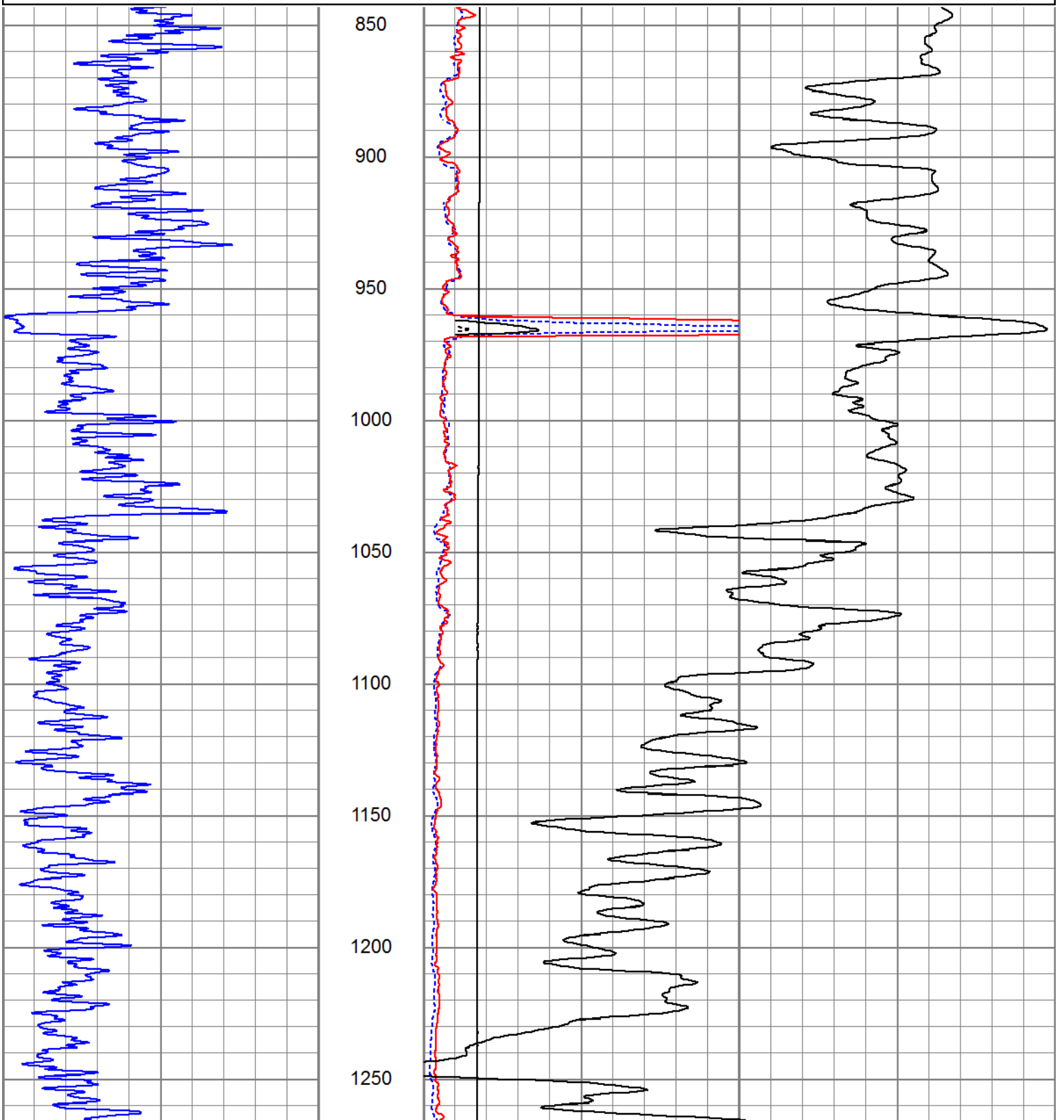
west of ness city to n rd., north to 170th rd., east 1/2, north into

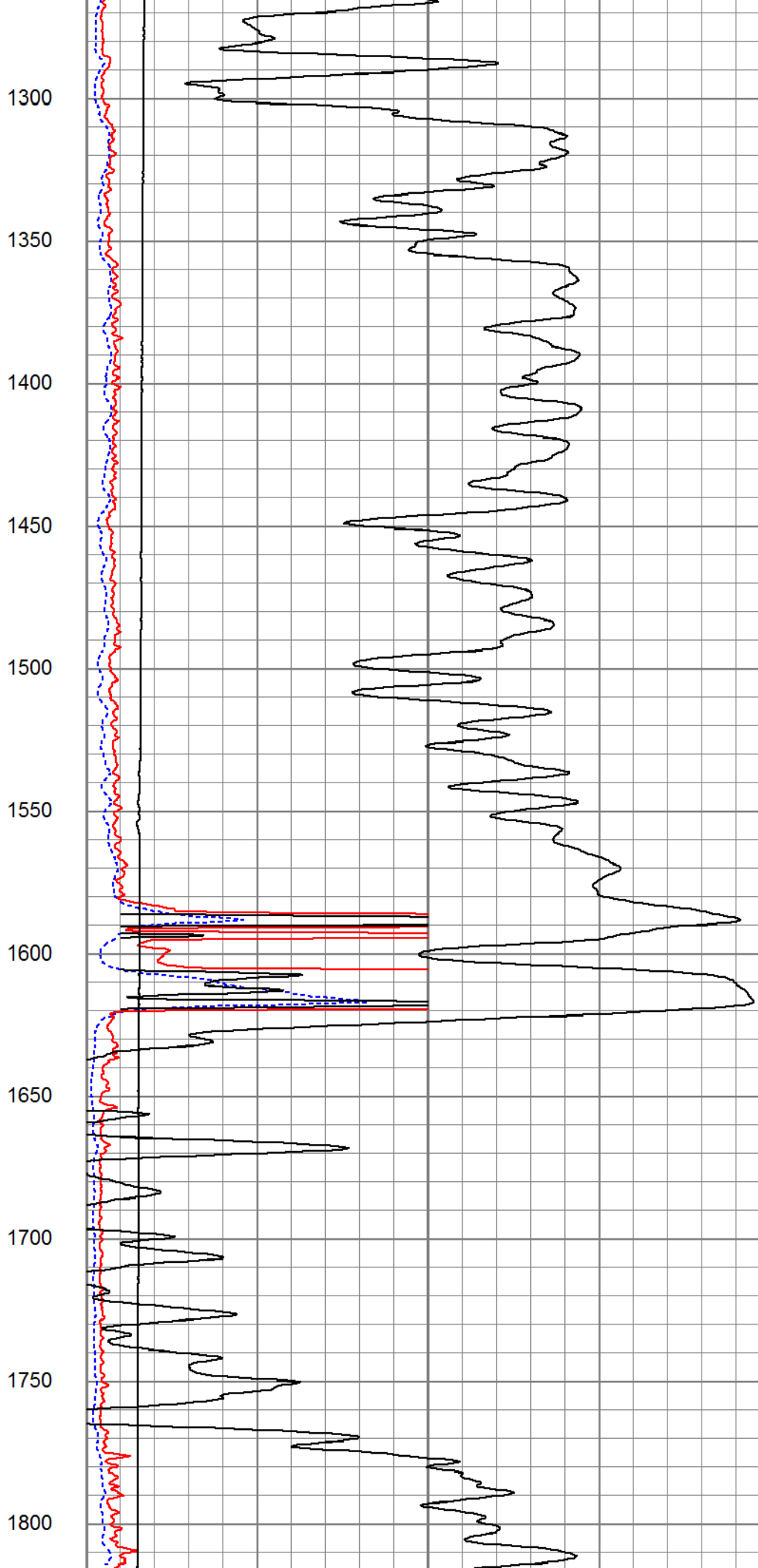
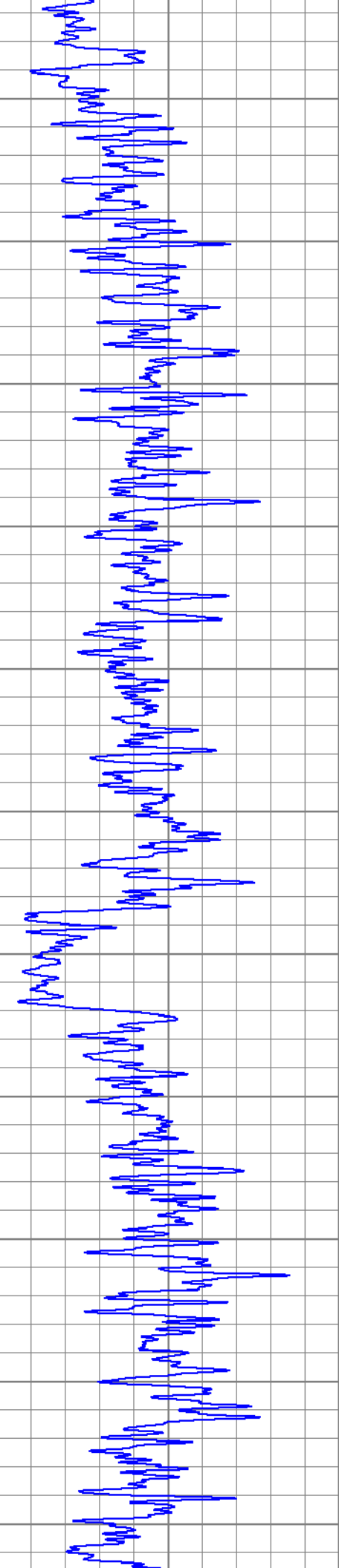


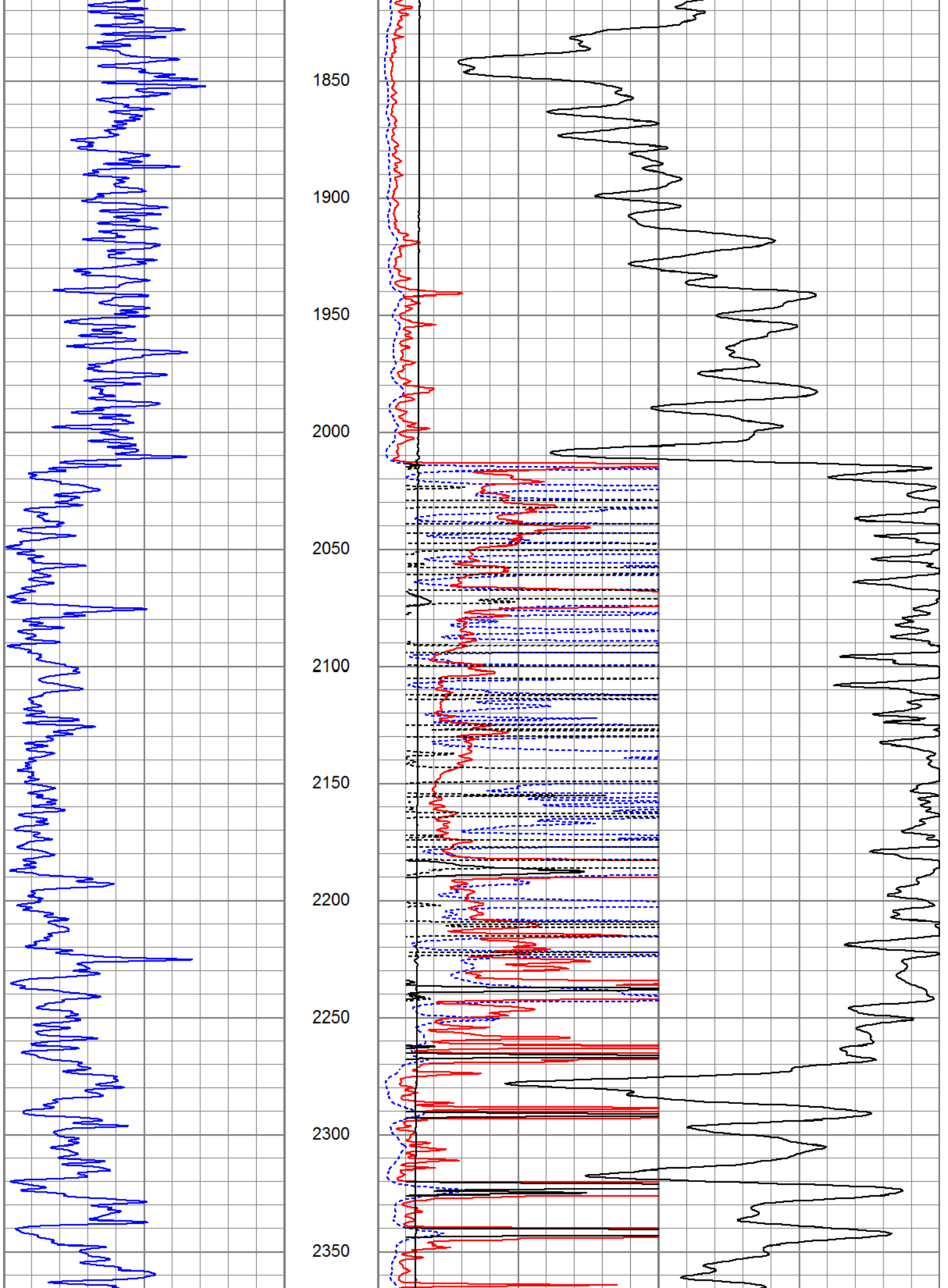
Main Pass

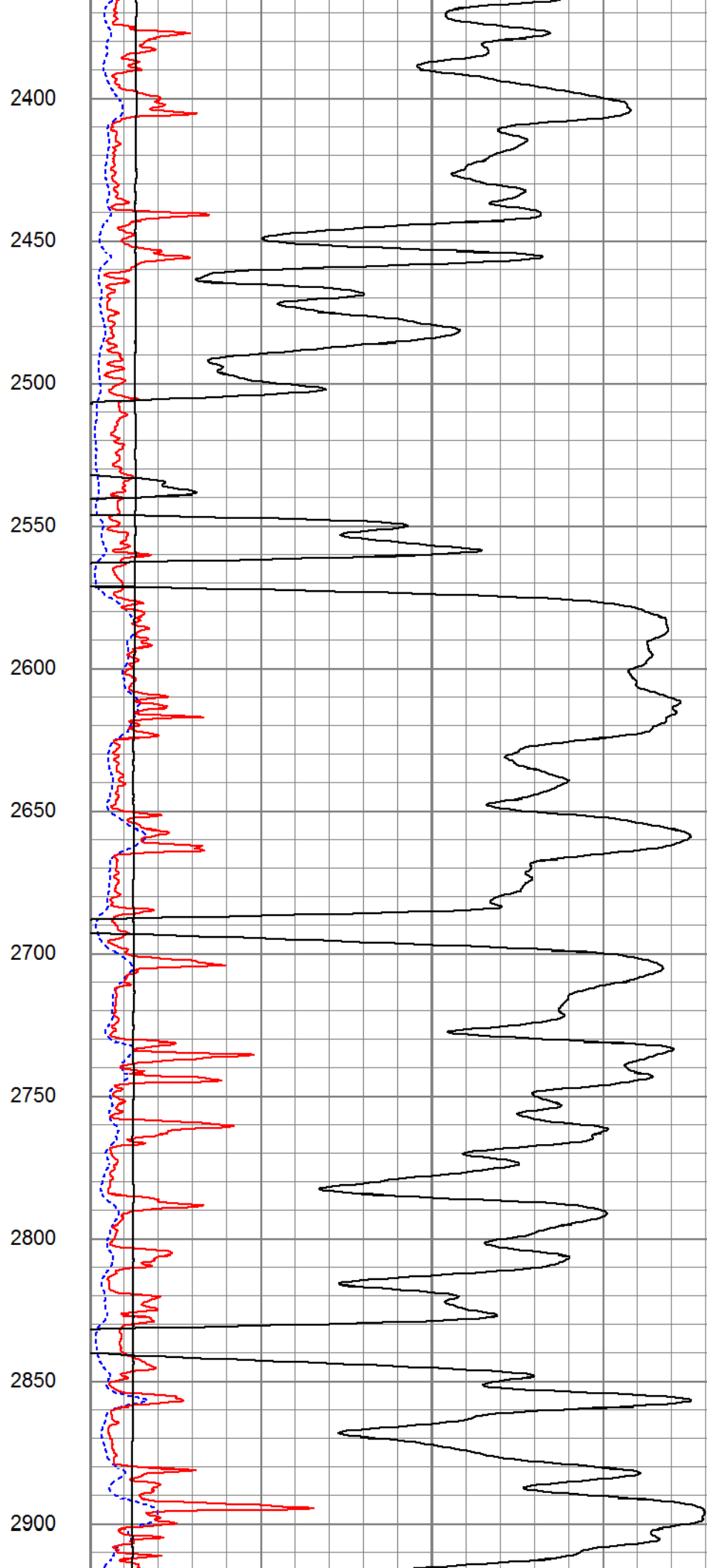
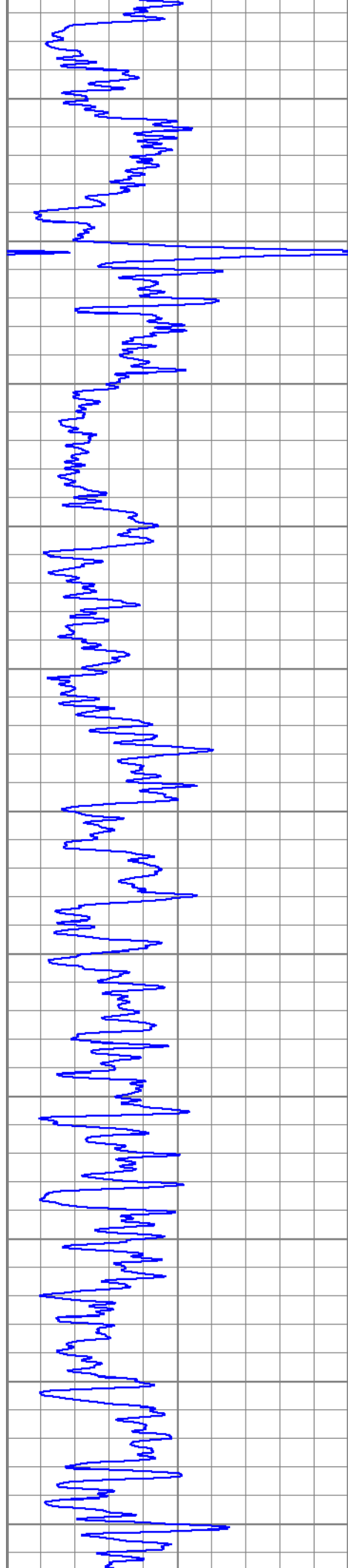
Database File tcjordon#2-4oh.db  
 Dataset Pathname pass2  
 Presentation Format kdrillinn  
 Dataset Creation Mon Dec 01 00:18:30 2014  
 Charted by Depth in Feet scaled 1:600

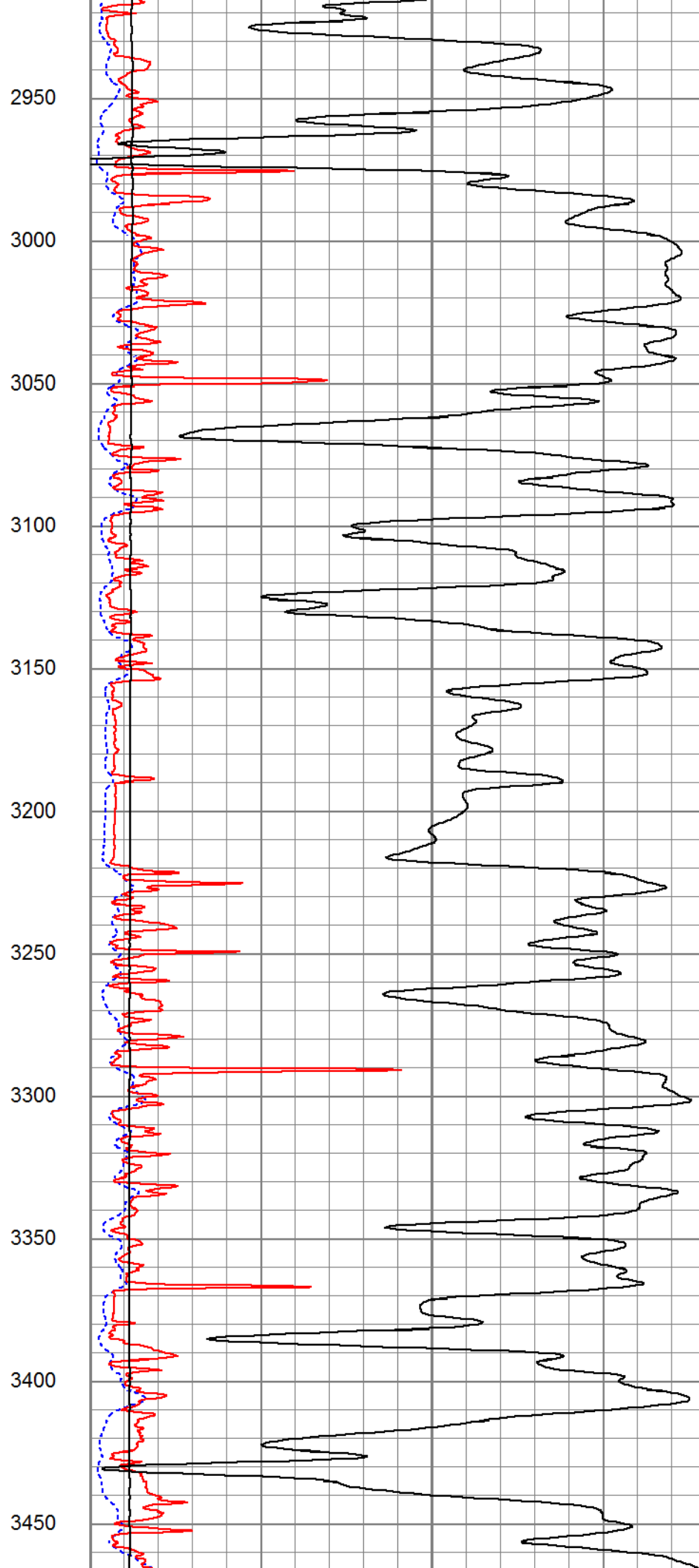
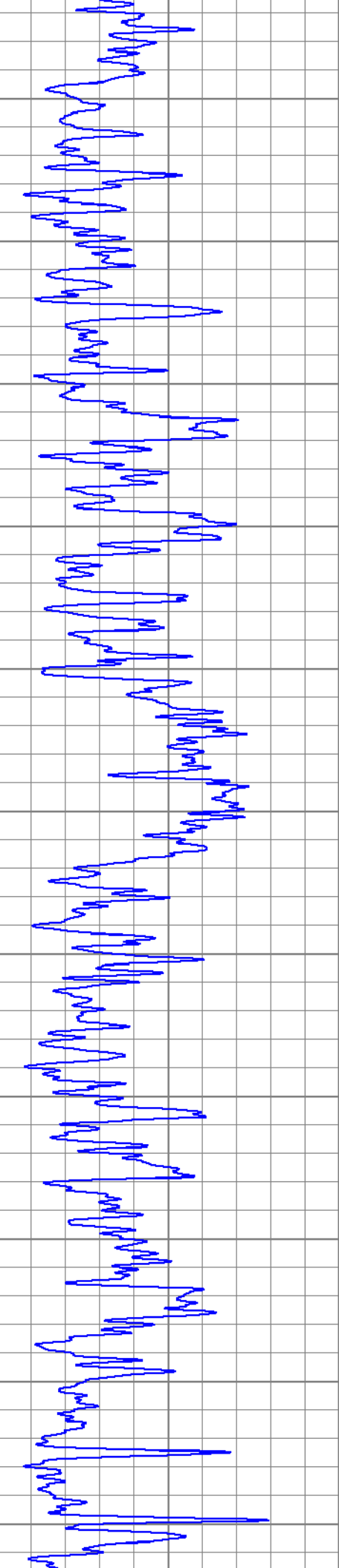
0	GR (GAPI)	150	1000	CILD (mmho/m)	0
			10000	LTEN (lb)	0
0	RILD (Ohm-m)	50			
0	RLL3 (Ohm-m)	50			
50	RILD x 10 (Ohm-m)	500			
50	RLL3 x 10 (Ohm-m)	500			

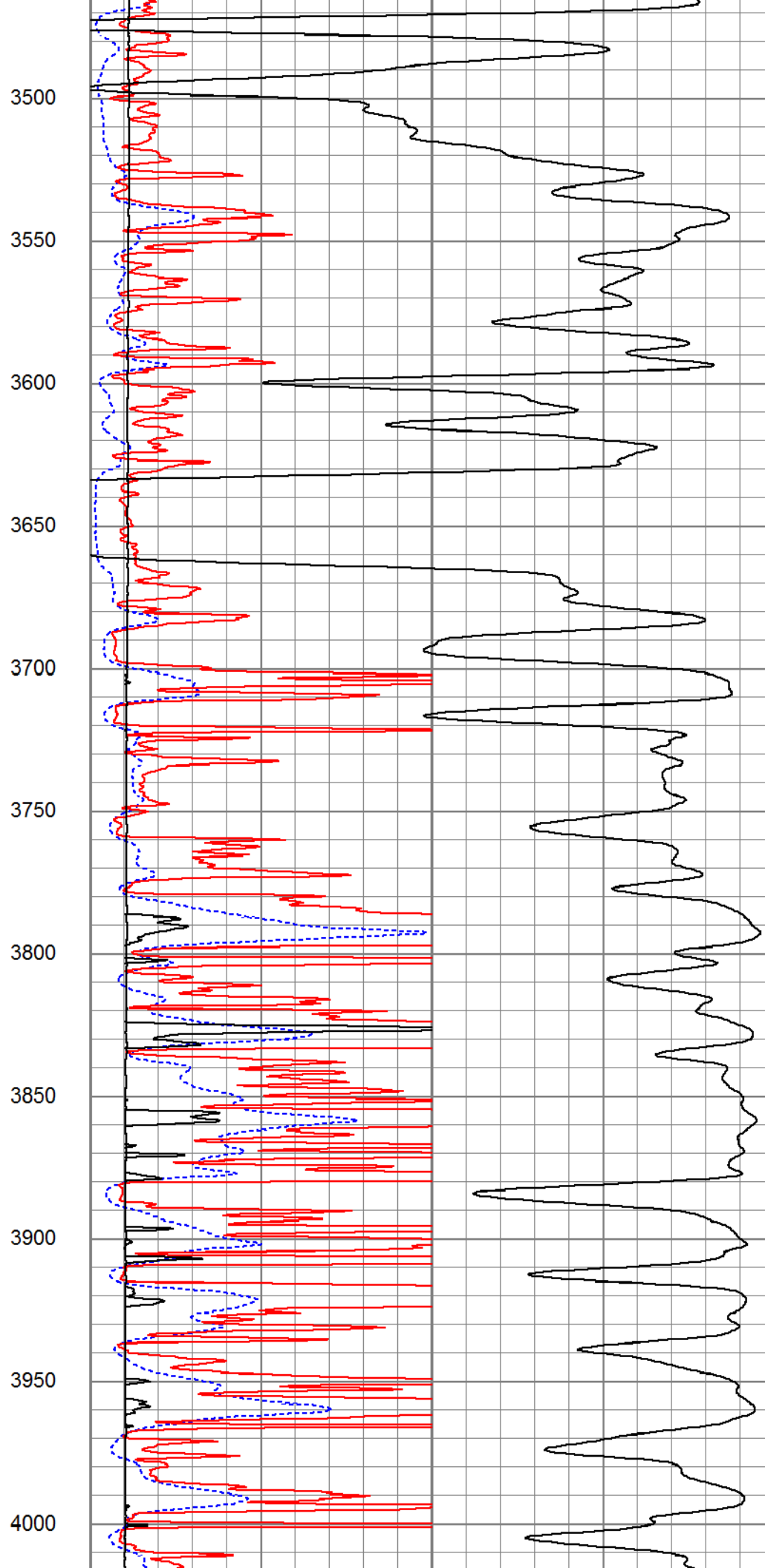
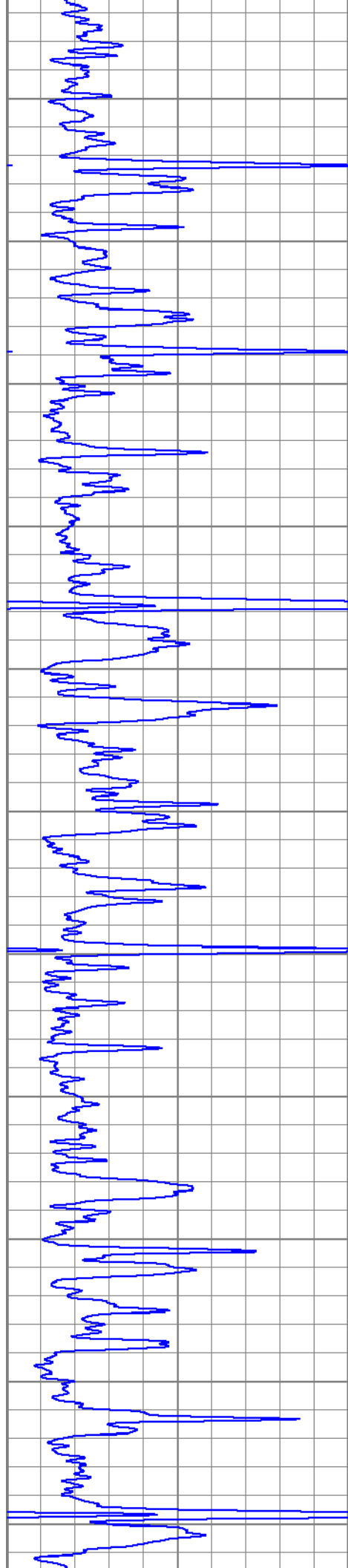


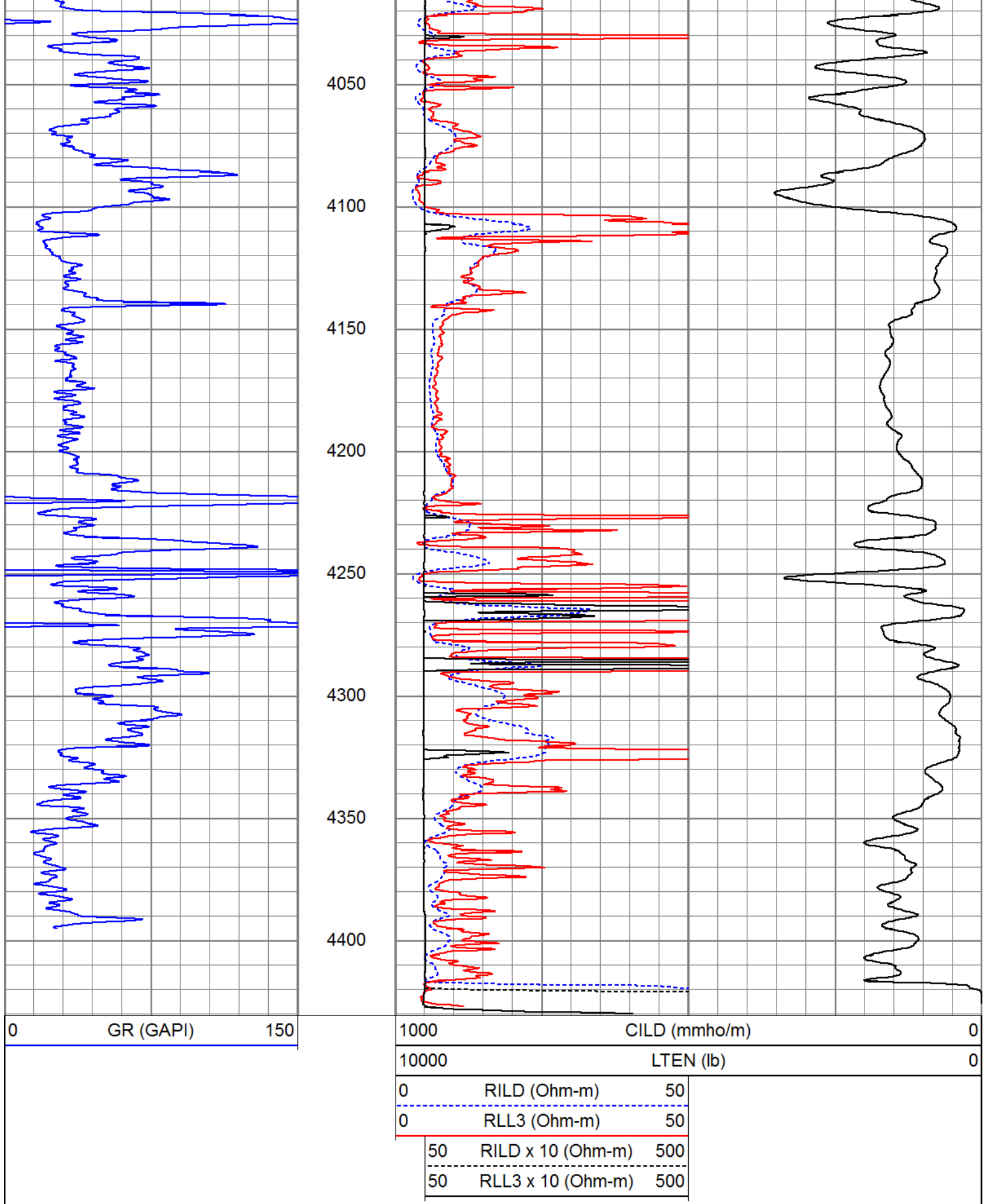










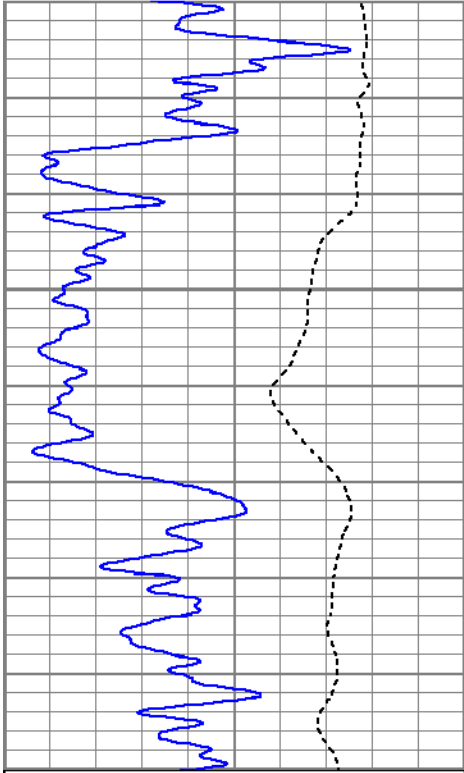


Main Pass

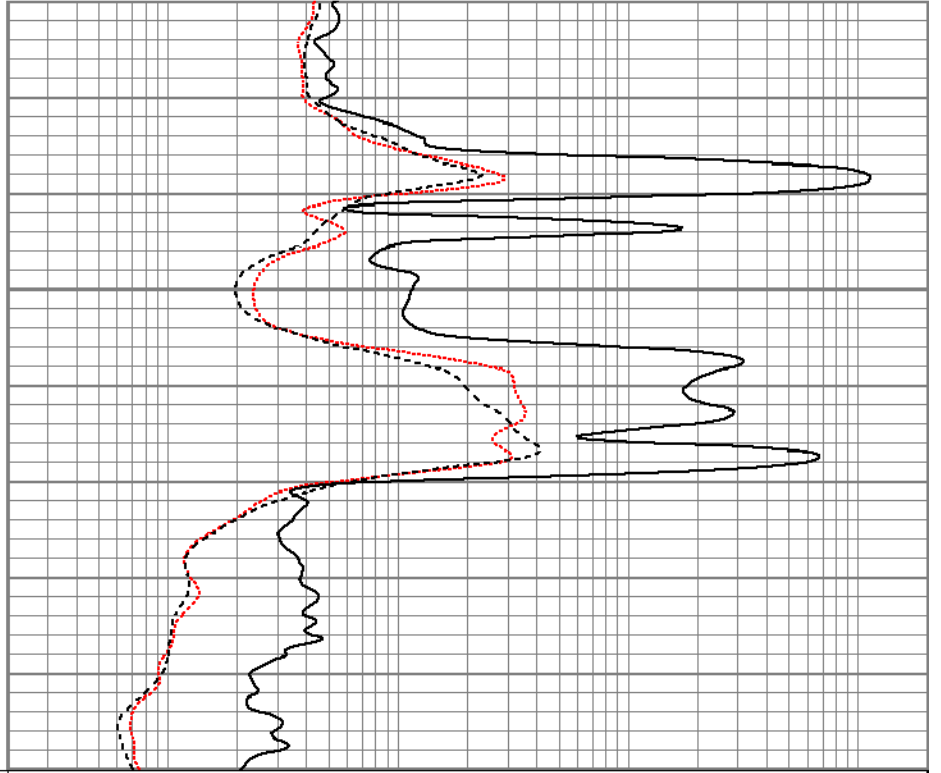
Database File tcjordon#2-4oh.db  
 Dataset Pathname pass2  
 Presentation Format kdil  
 Dataset Creation Mon Dec 01 00:18:30 2014  
 Charted by Depth in Feet scaled 1:240

0	GR (GAPI)	150
-100	SP (mV)	100

0.2	RILM (Ohm-m)	2000
0.2	RILD (Ohm-m)	2000
0.2	RLL3 (Ohm-m)	2000



1600



1650

0	GR (GAPI)	150
-100	SP (mV)	100

0.2	RILM (Ohm-m)	2000
0.2	RILD (Ohm-m)	2000
0.2	RLL3 (Ohm-m)	2000

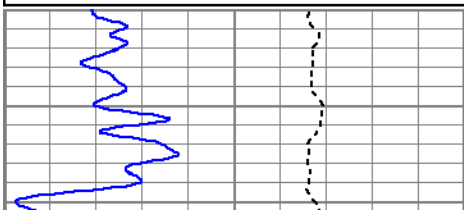


# Main Pass

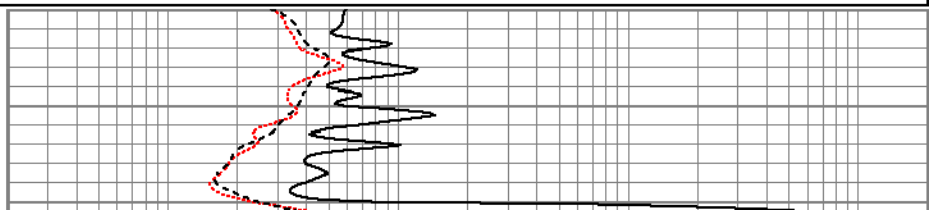
Database File tcjordon#2-4oh.db  
 Dataset Pathname pass2  
 Presentation Format kdil  
 Dataset Creation Mon Dec 01 00:18:30 2014  
 Charted by Depth in Feet scaled 1:240

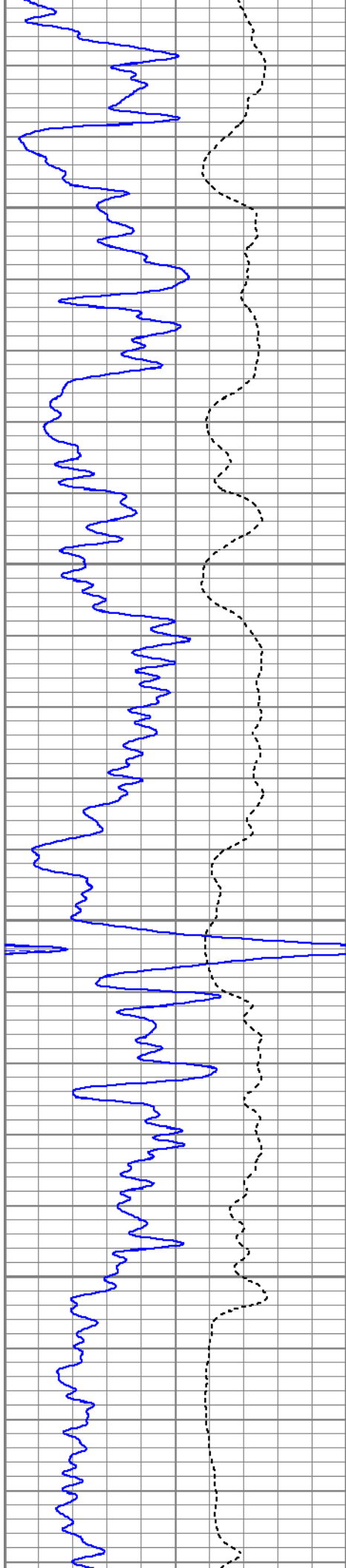
0	GR (GAPI)	150
-100	SP (mV)	100

0.2	RILM (Ohm-m)	2000
0.2	RILD (Ohm-m)	2000
0.2	RLL3 (Ohm-m)	2000



2300



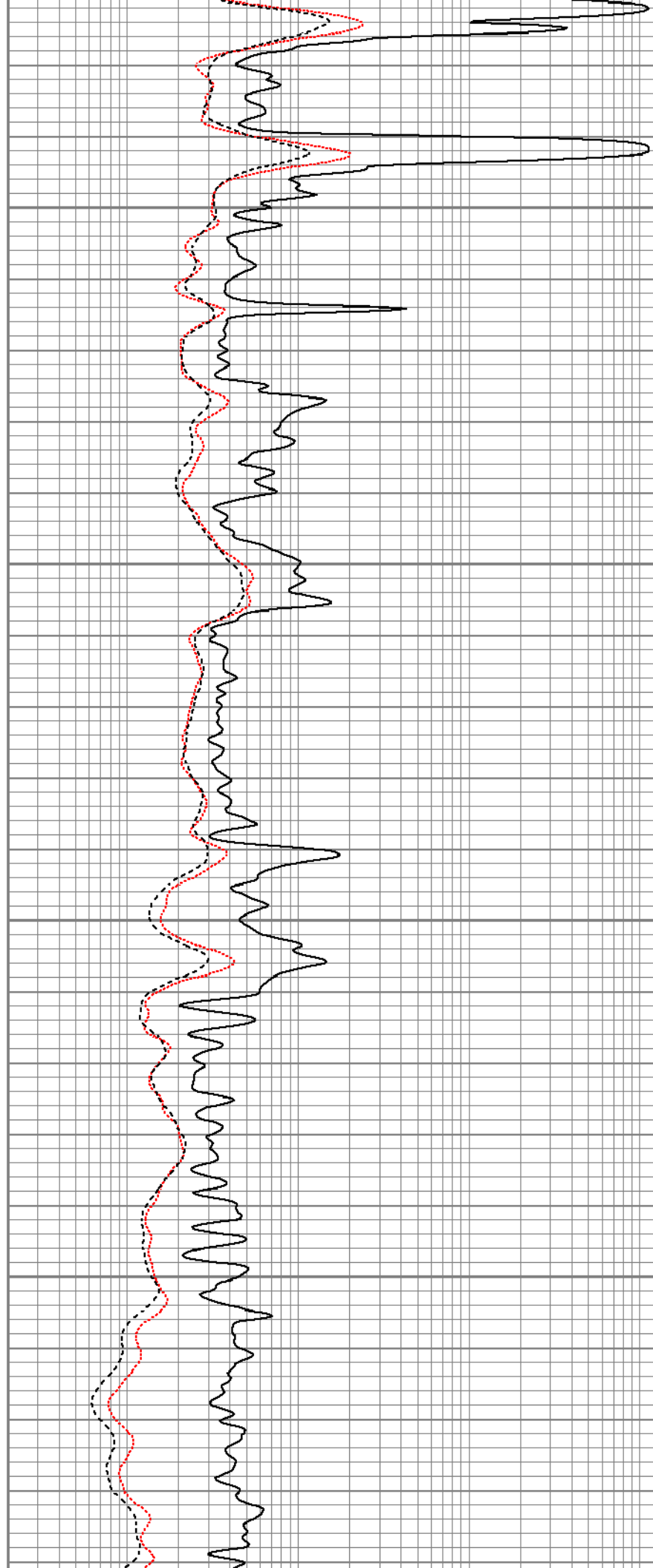


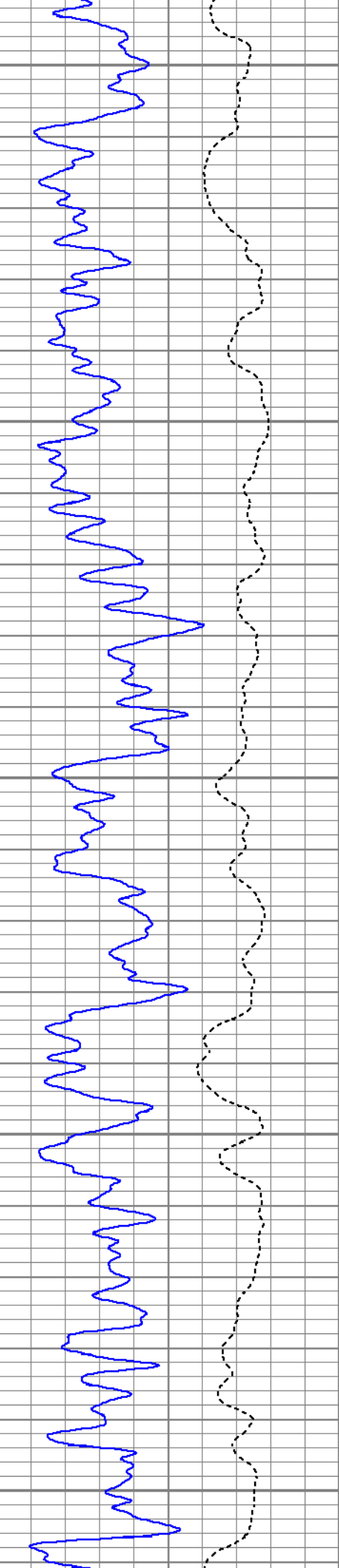
2350

2400

2450

2500





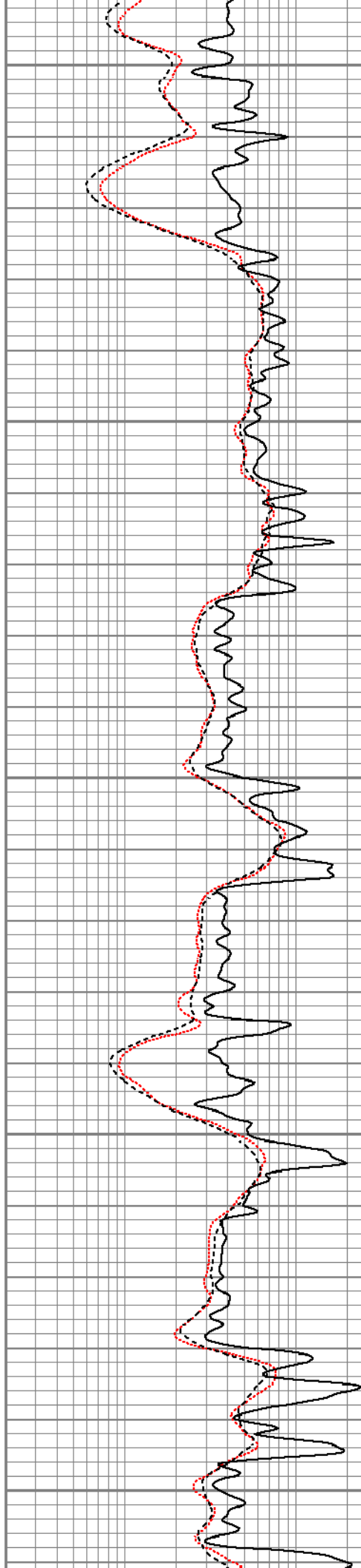
2550

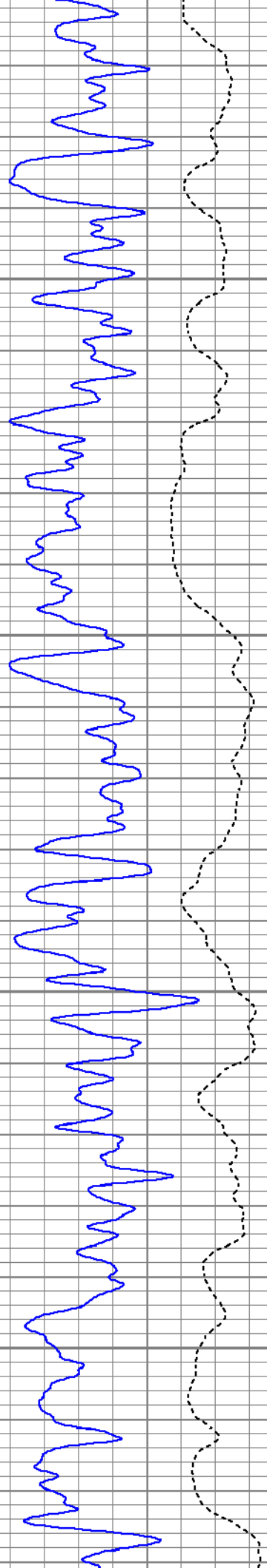
2600

2650

2700

2750



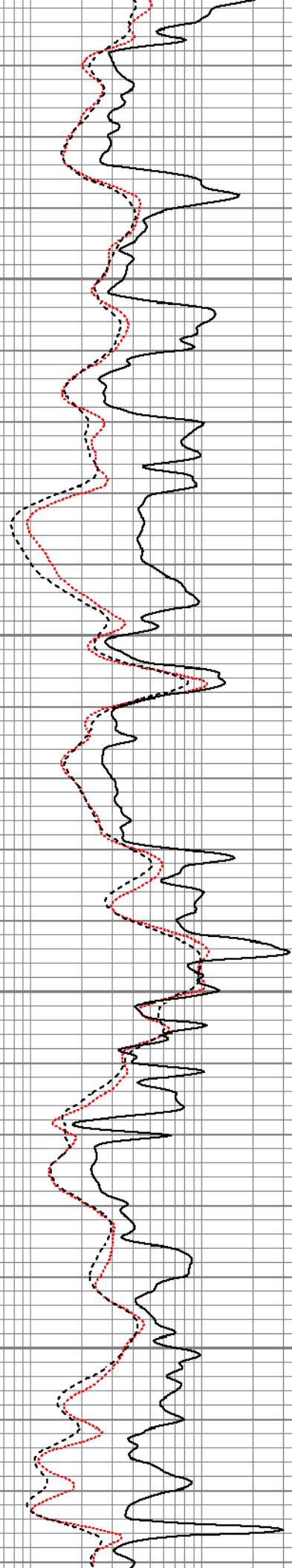


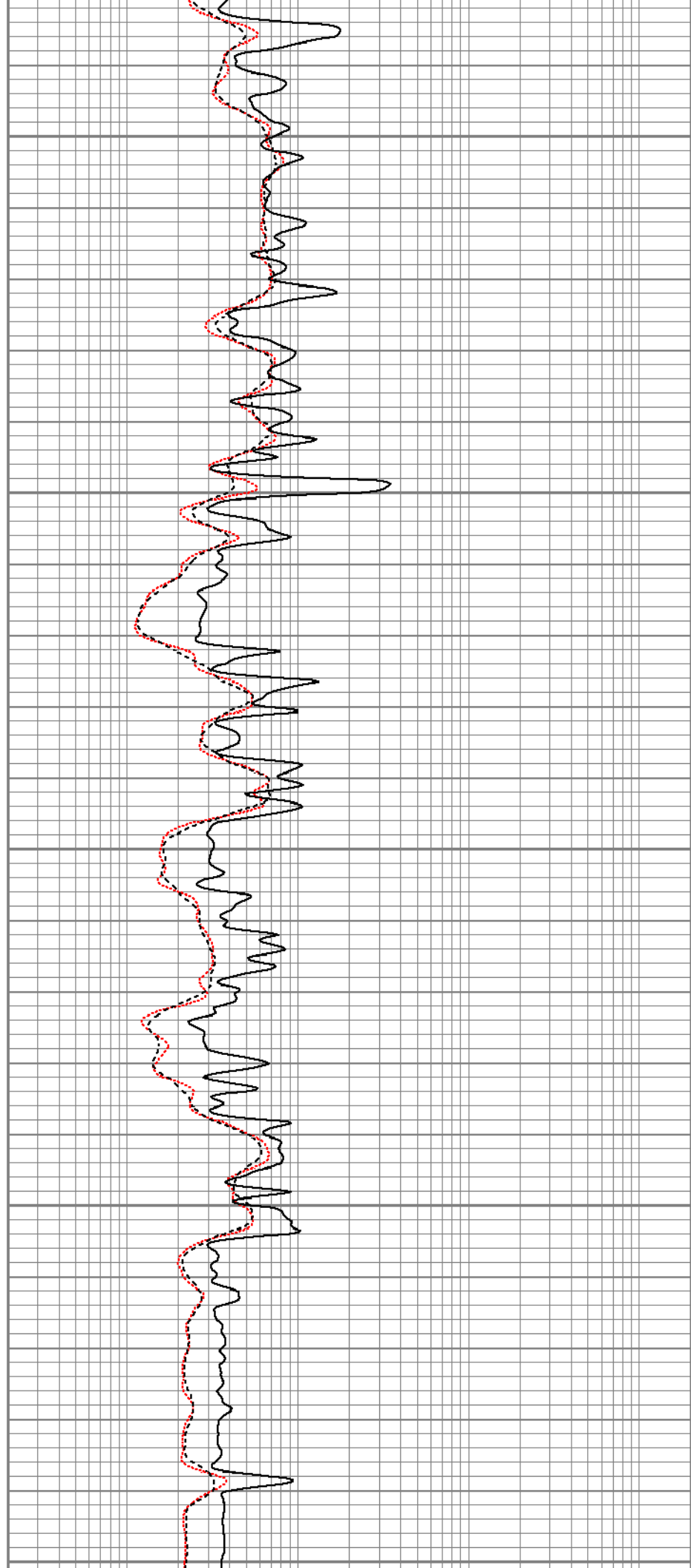
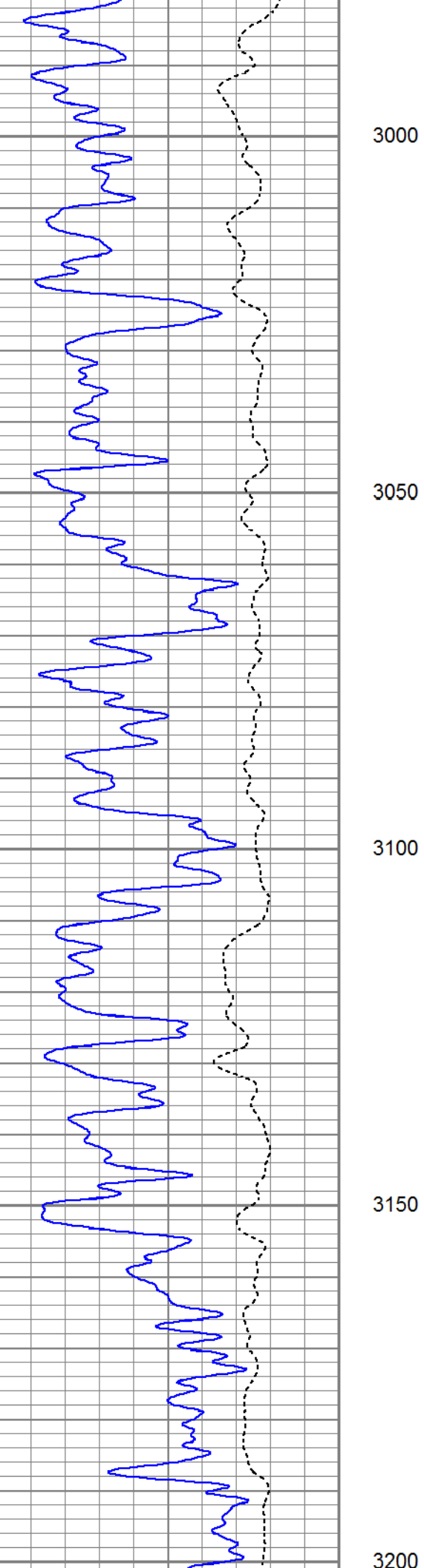
2800

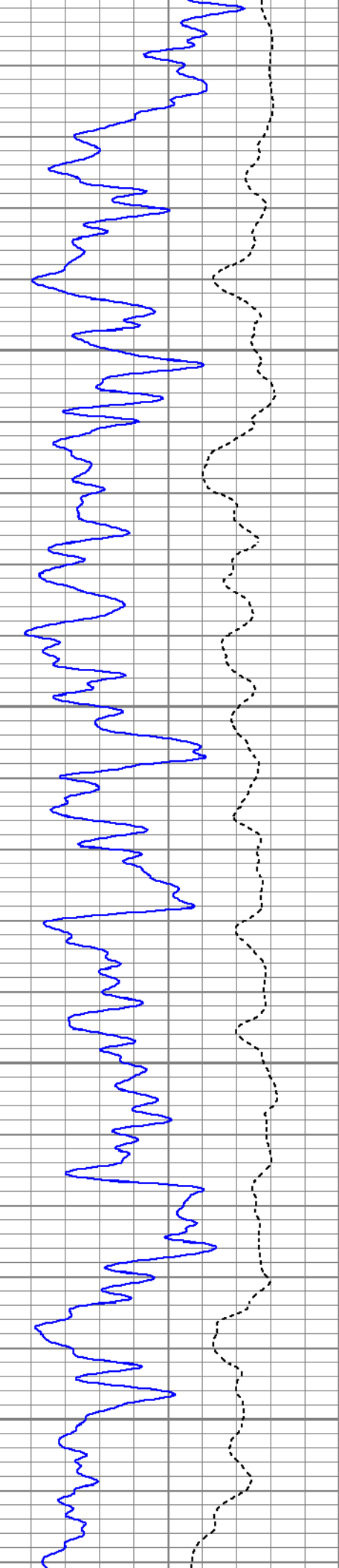
2850

2900

2950





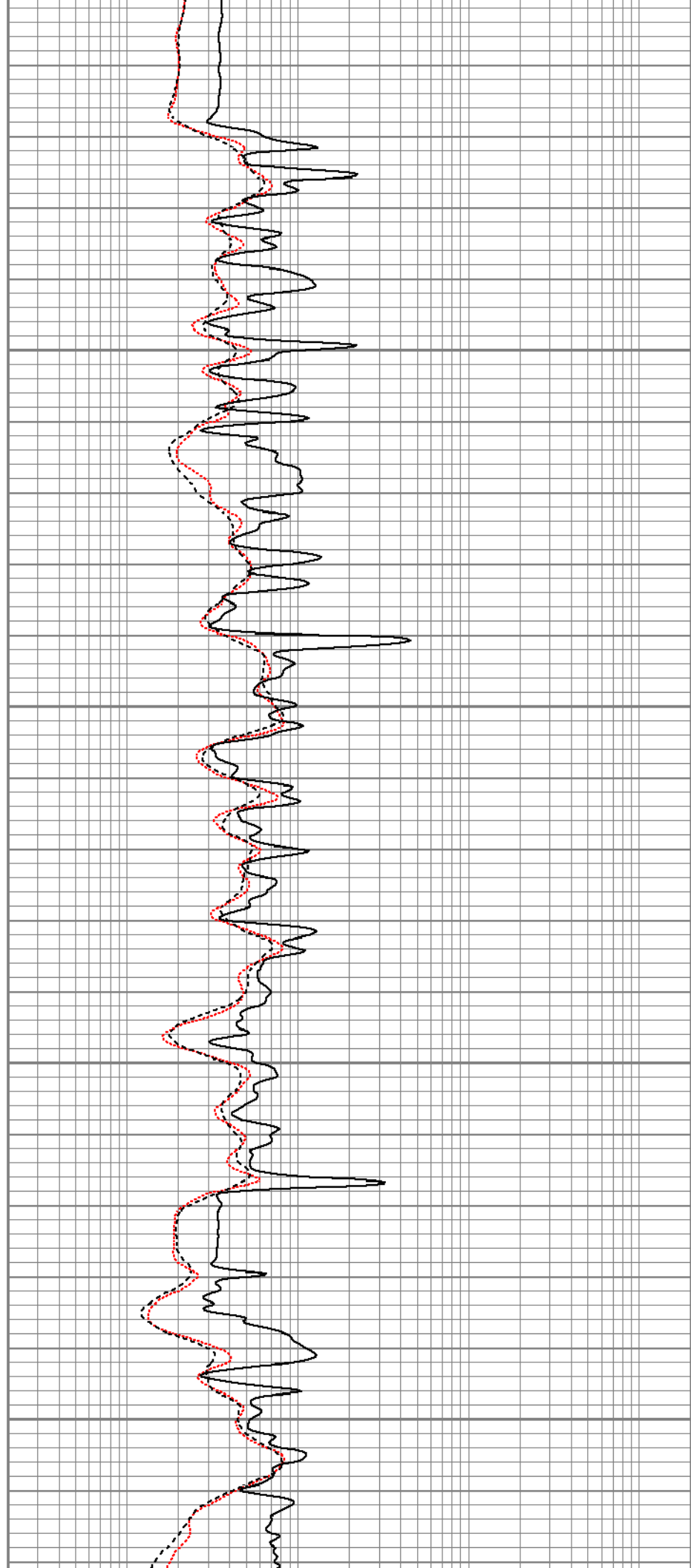


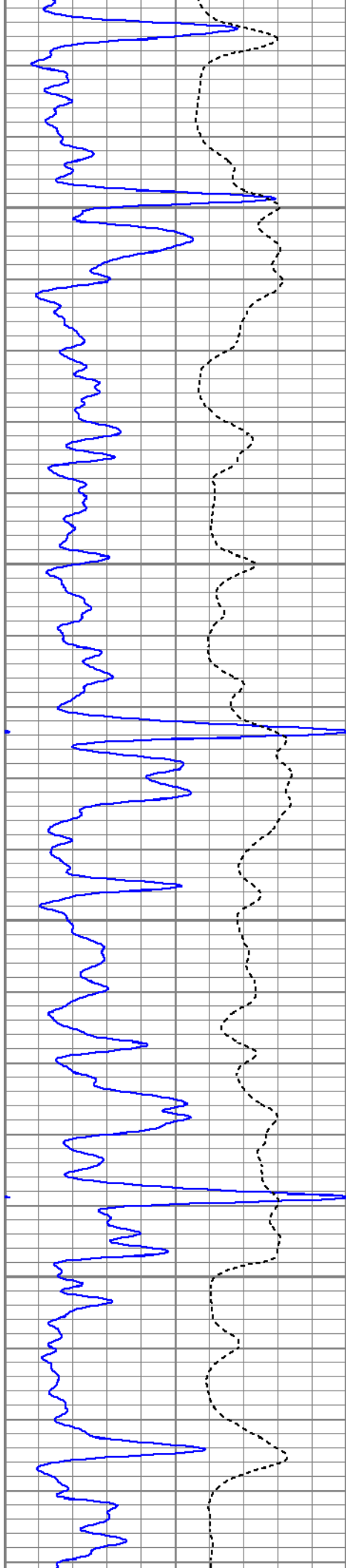
3250

3300

3350

3400



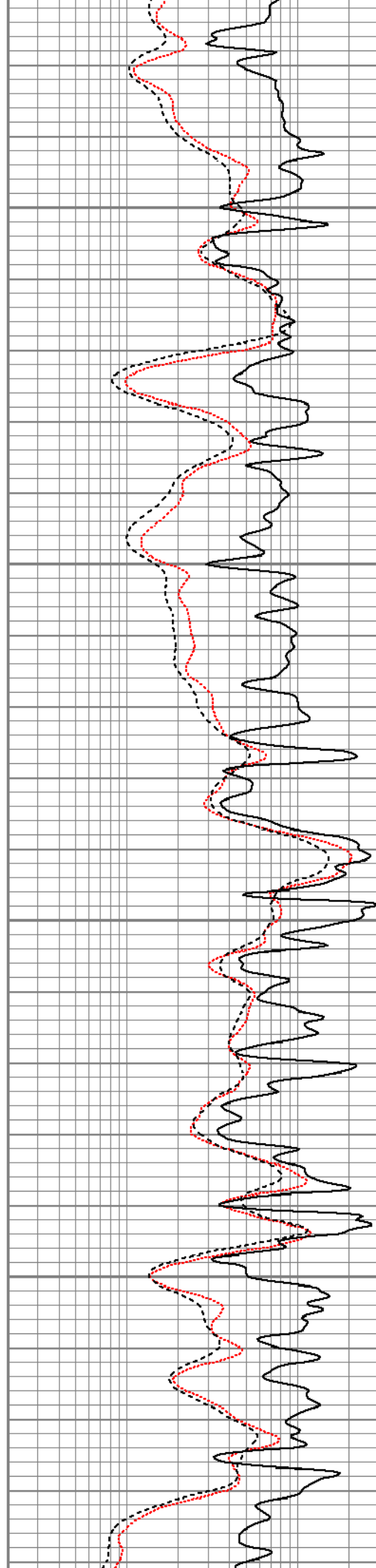


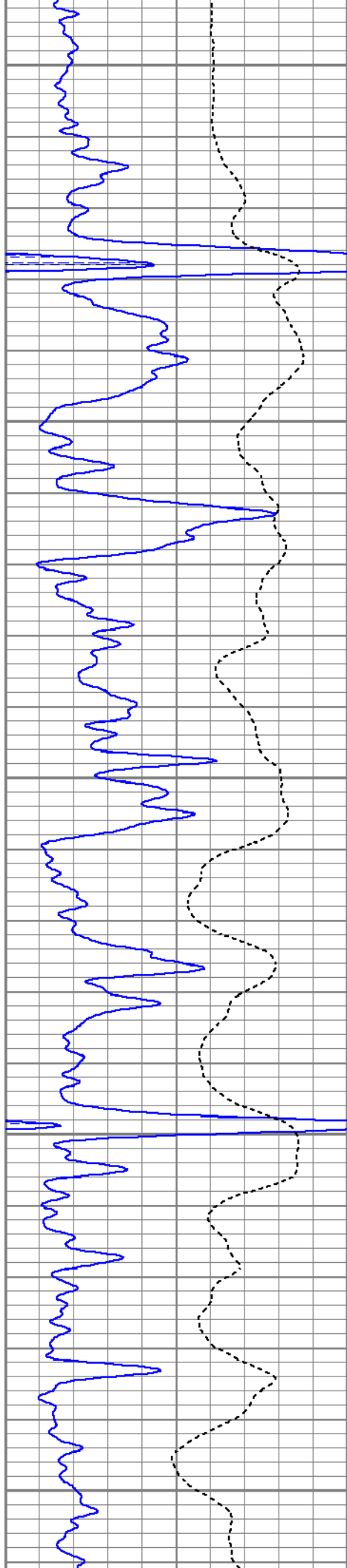
3450

3500

3550

3600





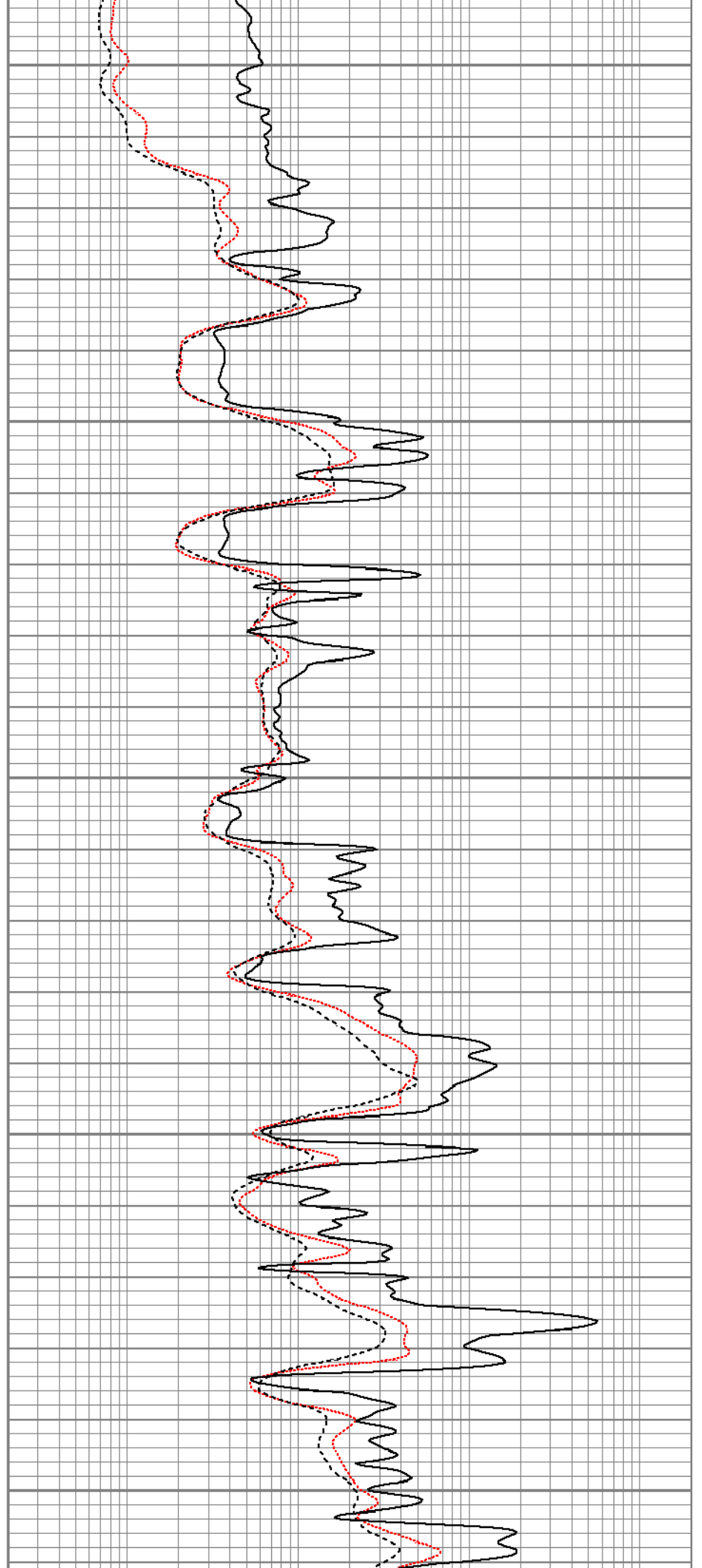
3650

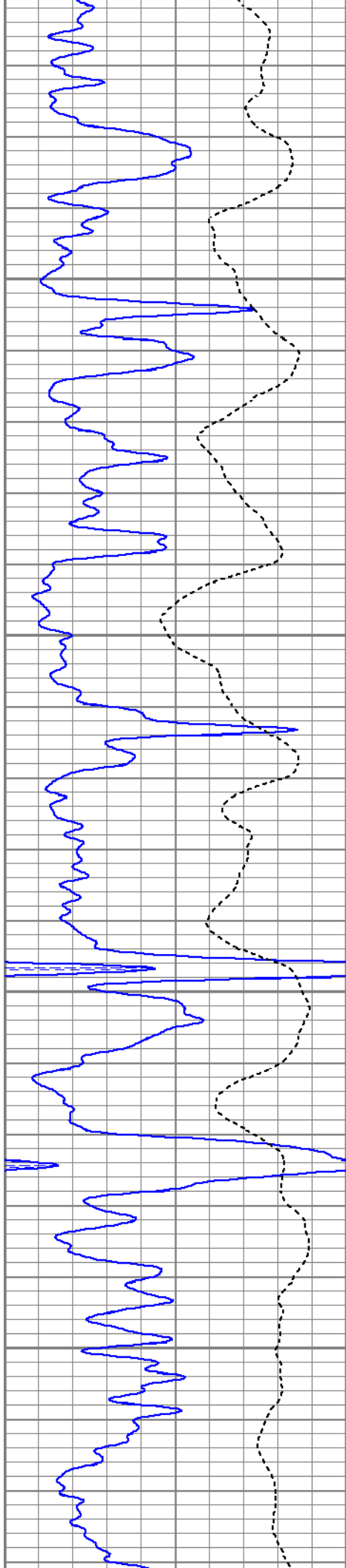
3700

3750

3800

3850



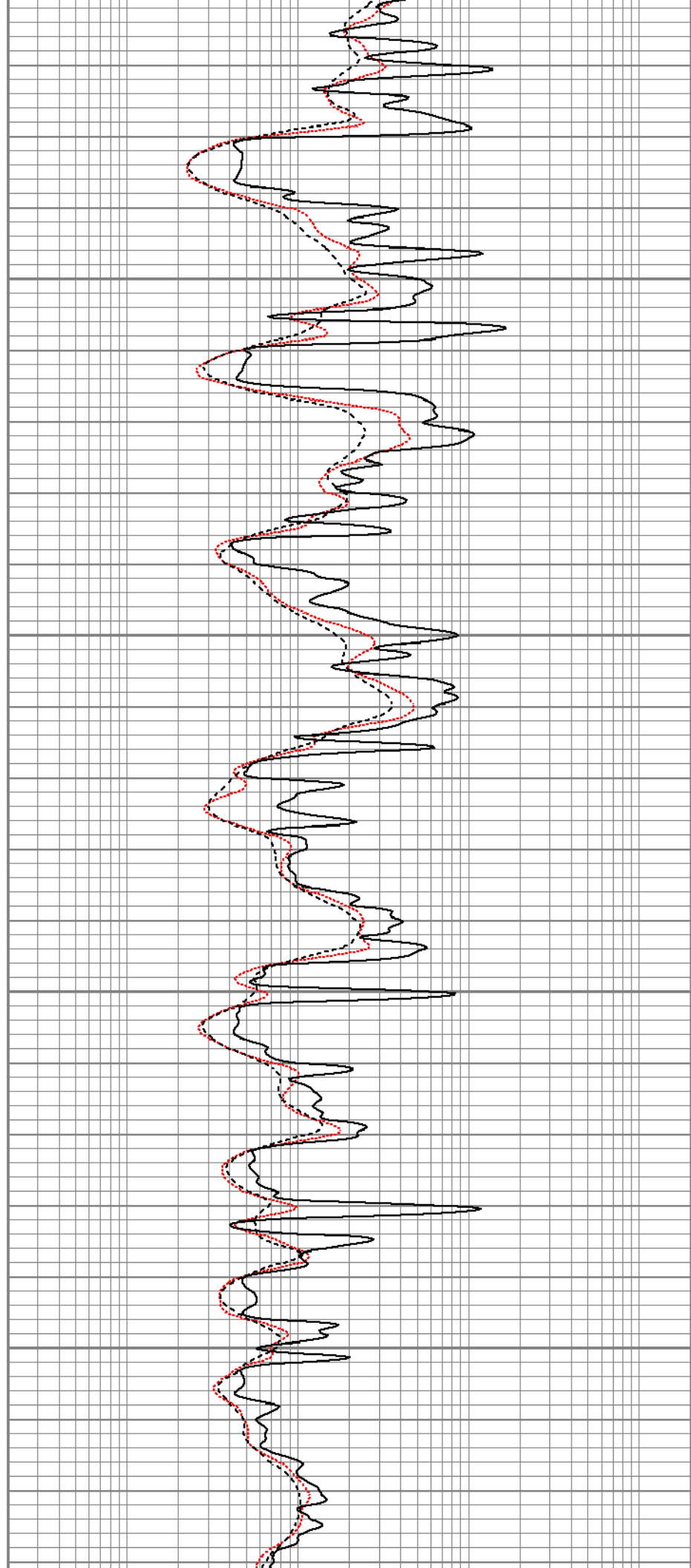


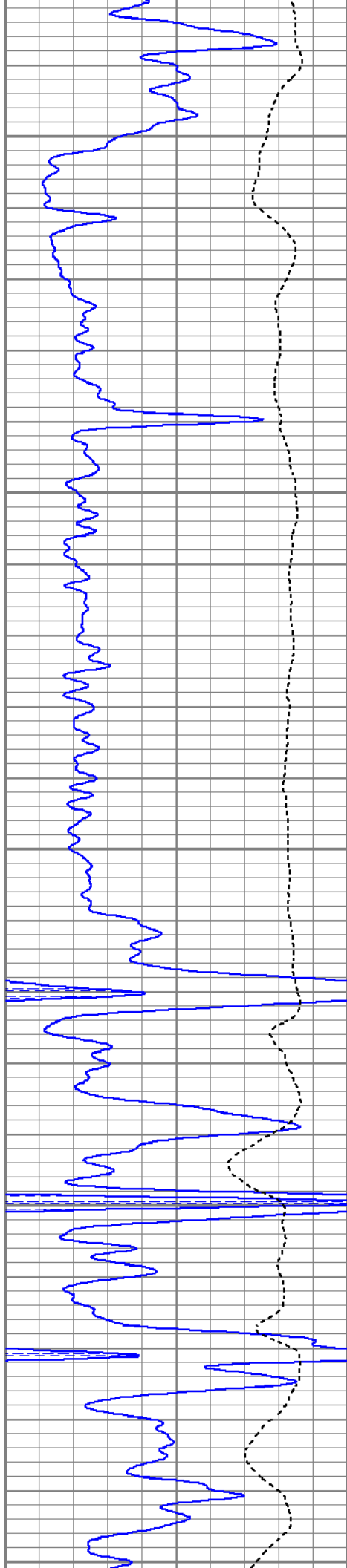
3900

3950

4000

4050





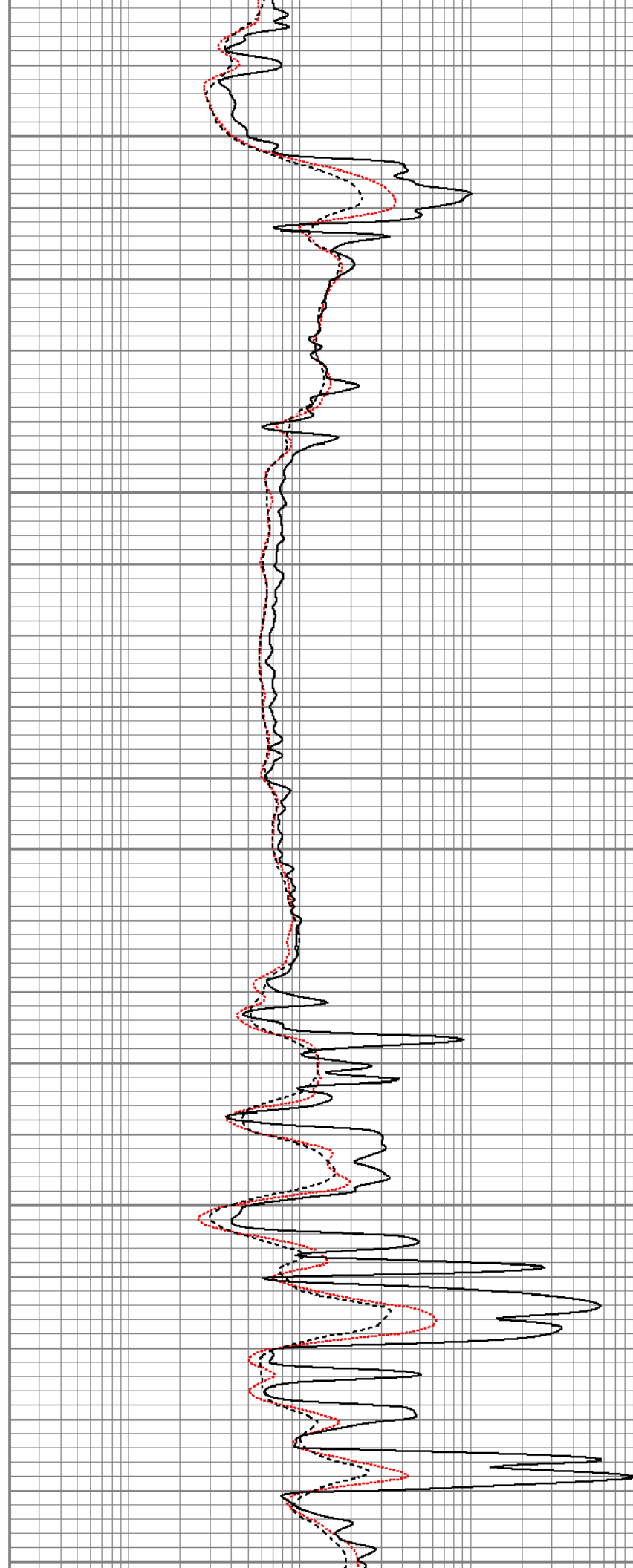
4100

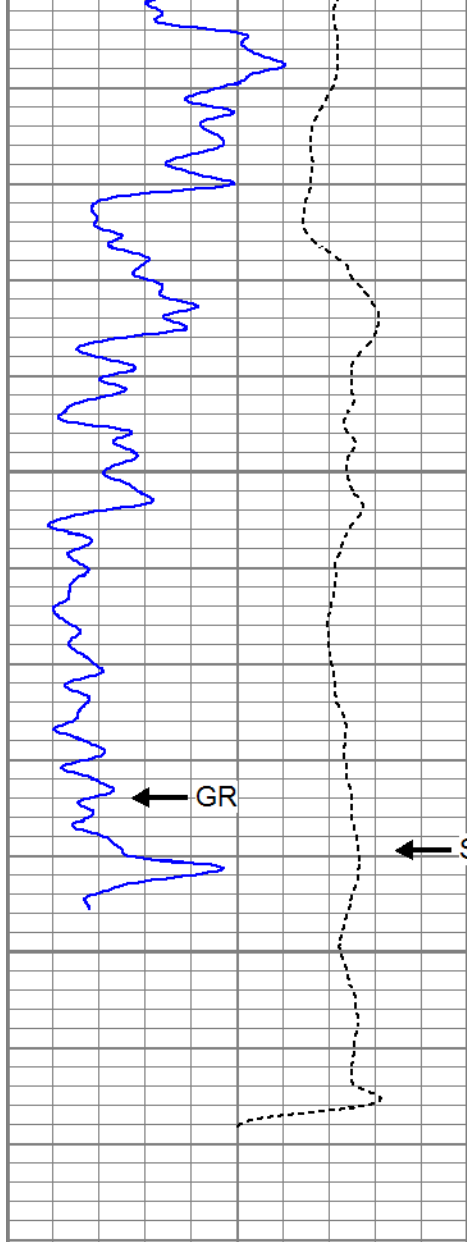
4150

4200

4250

4300





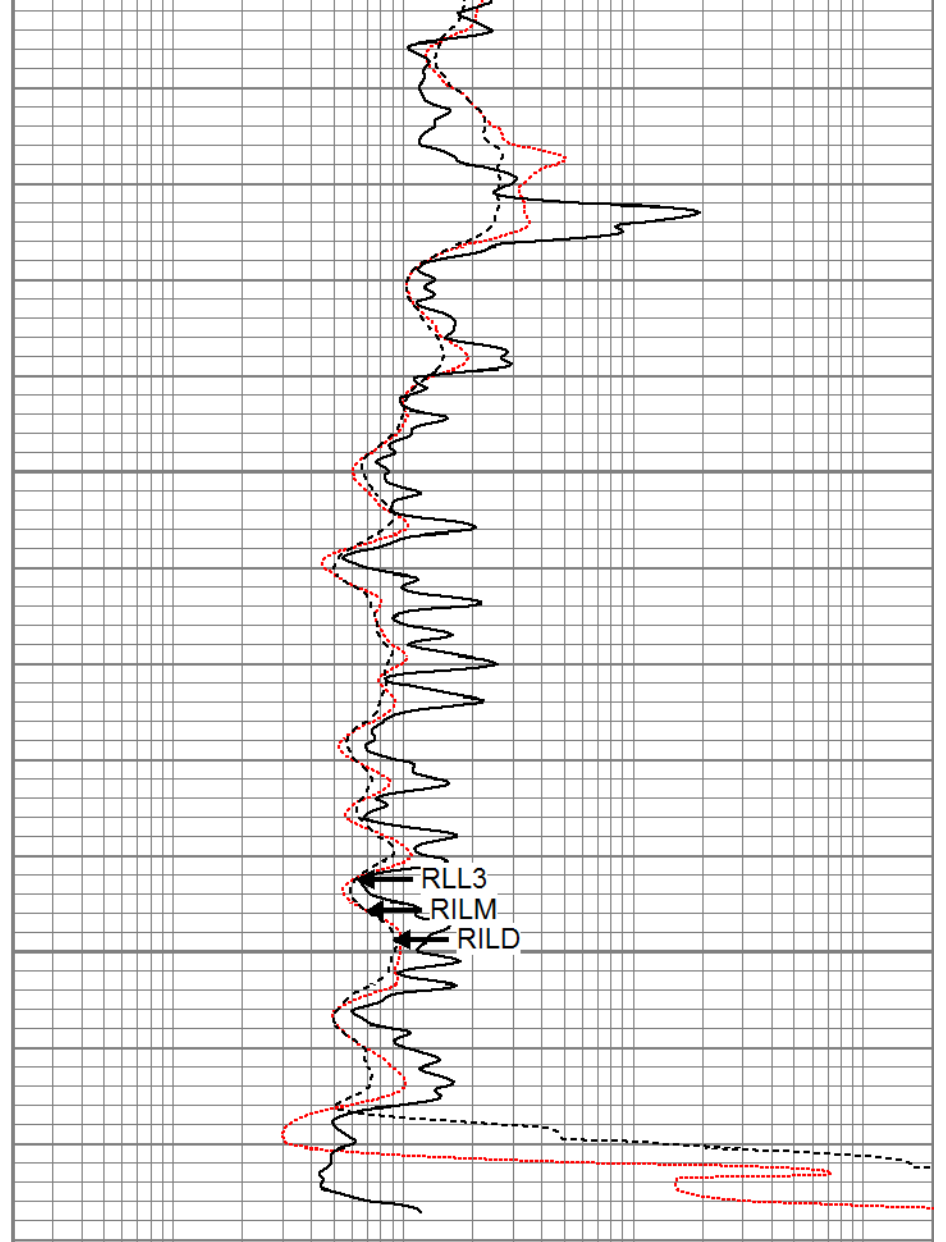
4350

GR

SP

4400

0	GR (GAPI)	150
-100	SP (mV)	100



RLL3  
RILM  
RILD

0.2	RILM (Ohm-m)	2000
0.2	RILD (Ohm-m)	2000
0.2	RLL3 (Ohm-m)	2000

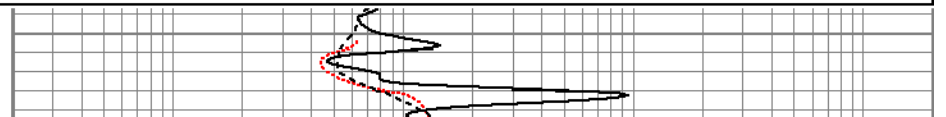
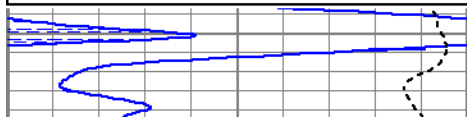


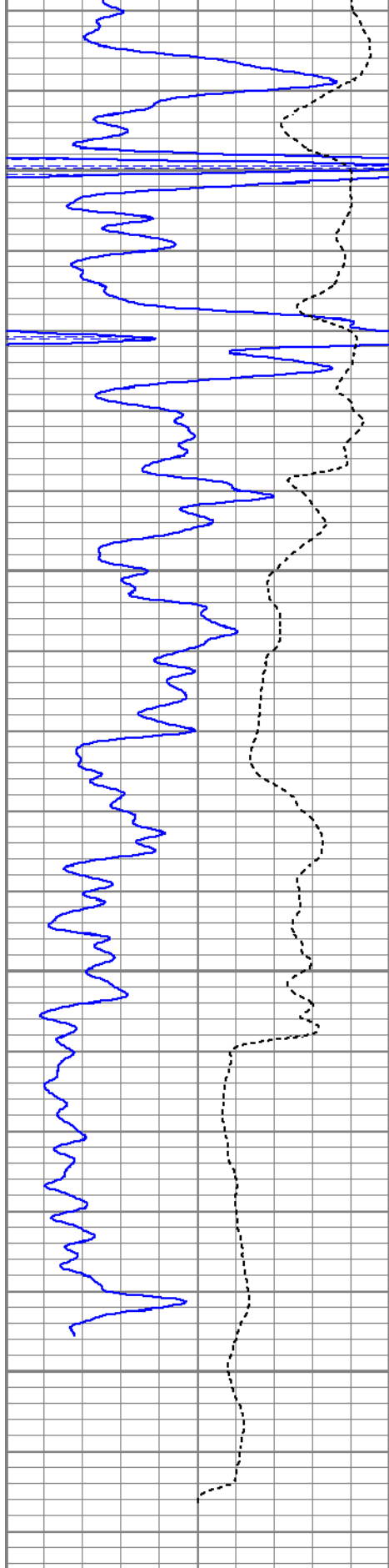
# Repeat Pass

Database File tcjordon#2-4oh.db  
 Dataset Pathname pass1  
 Presentation Format kdil  
 Dataset Creation Mon Dec 01 00:03:42 2014  
 Charted by Depth in Feet scaled 1:240

0	GR (GAPI)	150
-100	SP (mV)	100

0.2	RILM (Ohm-m)	2000
0.2	RILD (Ohm-m)	2000
0.2	RLL3 (Ohm-m)	2000





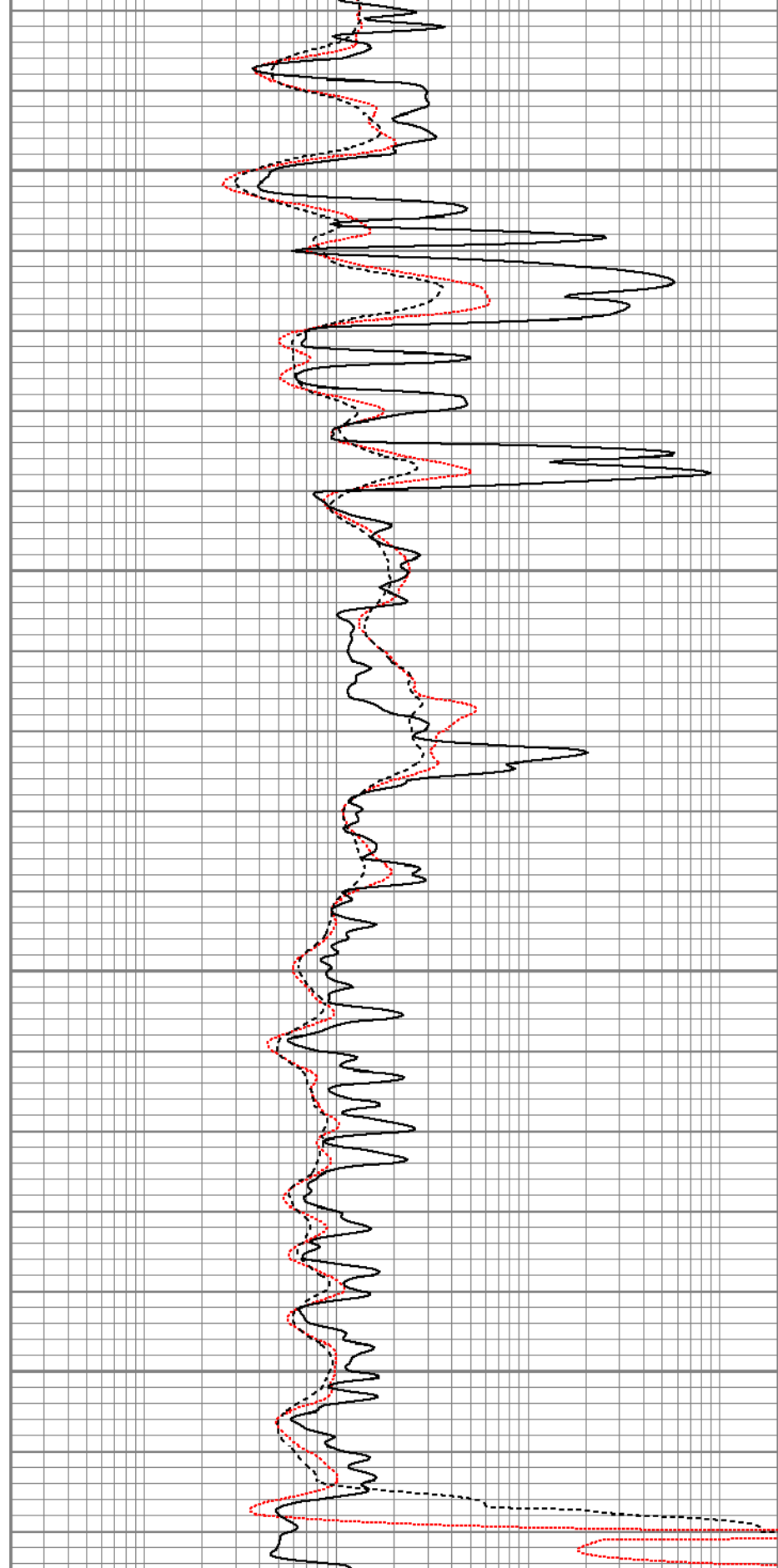
0	GR (GAPI)	150
-100	SP (mV)	100

4250

4300

4350

4400



0.2	RILM (Ohm-m)	2000
0.2	RILD (Ohm-m)	2000
0.2	RLL3 (Ohm-m)	2000

**Calibration Report**

Database File tcjordon#2-4oh.db  
 Dataset Pathname pass1  
 Dataset Creation Mon Dec 01 00:03:42 2014

**Dual Induction Calibration Report**

Serial-Model: 080522-Probe  
 Surface Cal Performed: Sun Nov 30 21:29:07 2014  
 Downhole Cal Performed: Sun Nov 30 21:29:52 2014  
 After Survey Verification Performed: Sun Nov 30 21:29:52 2014

**Surface Calibration**

Loop:	Readings			References			Results	
	Air	Loop		Air	Loop		m	b
Deep	0.002	0.641	V	0.000	400.000	mmho/m	625.839	-1.127
Medium	0.004	0.742	V	0.000	464.000	mmho/m	628.715	-2.759
Internal:	Zero	Cal		Zero	Cal		m	b
Deep	0.001	0.640	V	0.000	400.000	mmho/m	625.845	-0.817
Medium	0.004	0.743	V	0.000	464.000	mmho/m	628.014	-2.465

**Downhole Calibration**

	Readings			References			Results	
	Zero	Cal		Zero	Cal		m'	b'
Deep	-0.512	400.141	mmho/m	-0.309	399.687	mmho/m	0.998	0.202
Medium	-0.150	464.322	mmho/m	-0.292	464.226	mmho/m	1.000	-0.142
LL3		7.287	V		750.000	Ohm-m		
		0.003	V		12.000	Ohm-m		
		-7.471	V		3745.000	mmho-m		

**After Survey Verification**

	Readings			Targets			Results	
	Zero	Cal		Zero	Cal		m'	b'
Deep	0.000	0.000	mmho/m	-0.512	400.141	mmho/m	1.000	0.000
Medium	0.000	0.000	mmho/m	-0.150	464.322	mmho/m	1.000	0.000
LL3		0.000	Ohm-m		750.000	Ohm-m		
		0.000	Ohm-m		12.000	Ohm-m		
		0.000	mmho-m		3745.000	mmho-m		

**Compensated Density Calibration Report**

Serial-Model: 2118-poilex  
 Source / Verifier: csvj12 /  
 Master Calibration Performed: Tue Nov 11 03:33:10 2014  
 Before Survey Verification Performed:  
 After Survey Verification Performed:

**Master Calibration**

	Density		Far Detector	Near Detector	
Magnesium	1.750	g/cc	373.74	361.30	cps
Aluminum	2.640	g/cc	72.24	238.77	cps

Spine Angle = 75.86

Density/Spine Ratio = 0.525

Size	Reading
------	---------

Small Ring	8.50	in	2.41	V
Large Ring	14.00	in	4.04	V

Before Survey Verification				
	<u>Target</u>		<u>Measured</u>	
		g/cc		g/cc
		g/cc		g/cc
		g/cc		g/cc

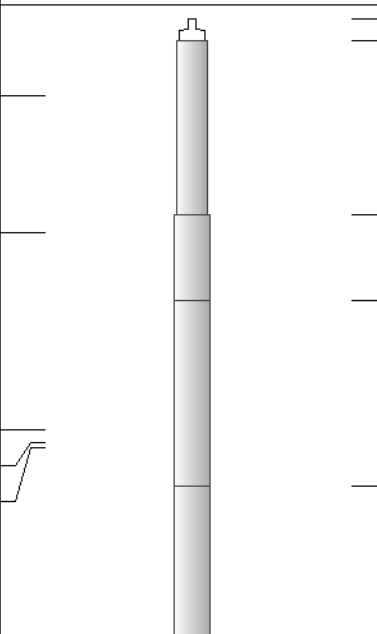
After Survey Verification				
	<u>Target</u>		<u>Measured</u>	
		g/cc		g/cc
		g/cc		g/cc
		g/cc		g/cc

**Gamma Ray Calibration Report**

Serial Number:	2118		
Tool Model:	poilex		
Performed:	Sun Nov 30 21:41:19 2014		
Calibrator Value:	1.0	GAPI	
Background Reading:	0.0	cps	
Calibrator Reading:	1.0	cps	
Sensitivity:	1.9000	GAPI/cps	

**Neutron Calibration Report**

Serial Number:	5138		
Tool Model:	G		
Performed:	Tue Nov 11 04:21:10 2014		
Calibrator Value:	1	NAPI	
Calibrator Reading:	1	cps	
Sensitivity:	1	NAPI/cps	

Sensor	Offset (ft)	Schematic	Description	Length (ft)	O.D. (in)	Weight (lb)
			CHD-None	0.75	1.50	5.00
NEU	34.17		NEU-G (5138) Gearhart Epithermal	5.65	3.50	85.00
GR	29.72		GR-poilex (2118)	2.79	4.00	40.00
LSD	23.30		CDL-poilex (2118)	6.04	4.00	275.00
DCAL	22.89					
SSD	22.72					

SP	10.60		DIL-Probe (080522) Probe Dual Induction	21.47	4.00	345.00
CILD	10.60					
CILM	6.89					
RLL3	1.70					

Dataset: tcjordon#2-4oh.db: field/well/run1/pass1  
Total length: 36.70 ft  
Total weight: 750.00 lb  
O.D.: 4.00 in