



**COMPLETION
& PRODUCTION
SERVICES CO.**

**COMPENSATED
DENSITY / NEUTRON
LOG**

Company BLACK DIAMOND OIL, INC.
Well GLENNEMEIER "A" #2
Field WEST UNION
County NORTON
State KANSAS

Company BLACK DIAMOND OIL, INC.
Well GLENNEMEIER "A" #2
Field WEST UNION
County NORTON State KANSAS

Location: API # : 15-137-20727-0000
330' FSL & 2310' FWL
SE - SE - SW

Permanent Datum GROUND LEVEL Elevation 2210
Log Measured From KELLY BUSHING 5' A.G.L.
Drilling Measured From KELLY BUSHING

Other Services
DIL/MEL
BTM GR
Elevation

Date	12/16/14
Run Number	ONE
Depth Driller	3650
Depth Logger	3648
Bottom Logged Interval	3624
Top Log Interval	3000
Casing Driller	8 5/8" 219'
Casing Logger	220
Bit Size	7 7/8"
Type Fluid in Hole	CHEMICAL MUD
Density / Viscosity	9.2/53
pH / Fluid Loss	10.5/8.0
Source of Sample	FLOWLINE
Rim @ Meas. Temp	.950@80F
Rmf @ Meas. Temp	.713@80F
Rmc @ Meas. Temp	1.14@80F
Source of Rmf / Rmc	MEASUREMENT
Rim @ BHT	.460@113F
Time Circulation Stopped	2 HOURS
Time Logger on Bottom	3:45 P.M.
Maximum Recorded Temperature	113F
Equipment Number	4854
Location	HAYS, KANSAS
Recorded By	JEFF LUEBBERS
Witnessed By	JEFF LAWLER

<<< Fold Here >>>

All interpretations are opinions based on inferences from electrical or other measurements and we cannot and do not guarantee the accuracy or correctness of any interpretation, and we shall not, except in the case of gross or willful negligence on our part, be liable or responsible for any loss, costs, damages, or expenses incurred or sustained by anyone resulting from any interpretation made by any of our officers, agents or employees. These interpretations are also subject to our general terms and conditions set out in our current Price Schedule.

Comments

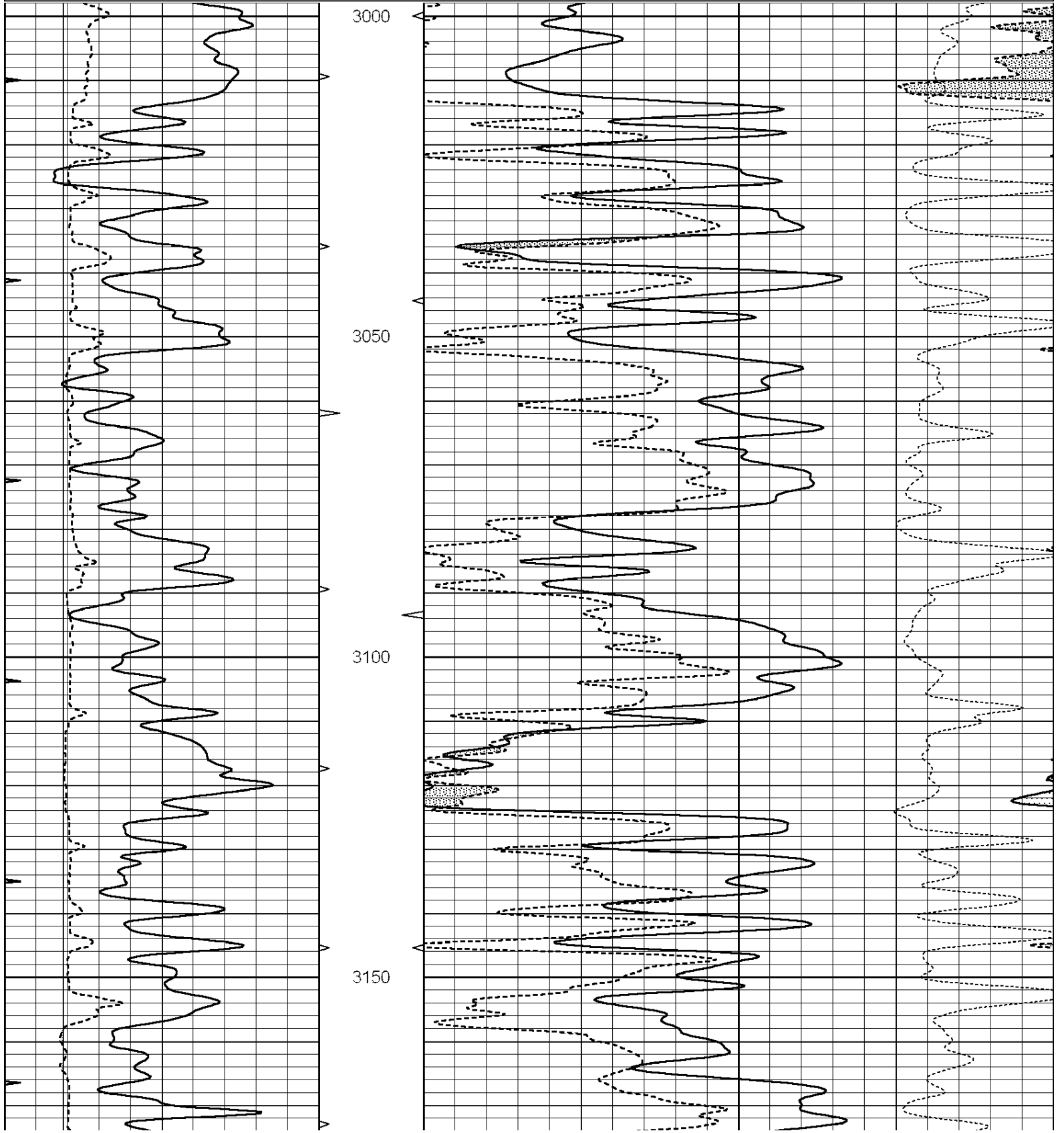
THANK YOU FOR USING "NABORS" HAYS, KANSAS (785) 628-6395
DIRECTIONS
LOGAN, KS., W. TO "RD. 12", 1 1/2S. TO STOP SIGN, 1W., 2S. TO TANK BATTERY, 3/4W. INTO S. OF THE

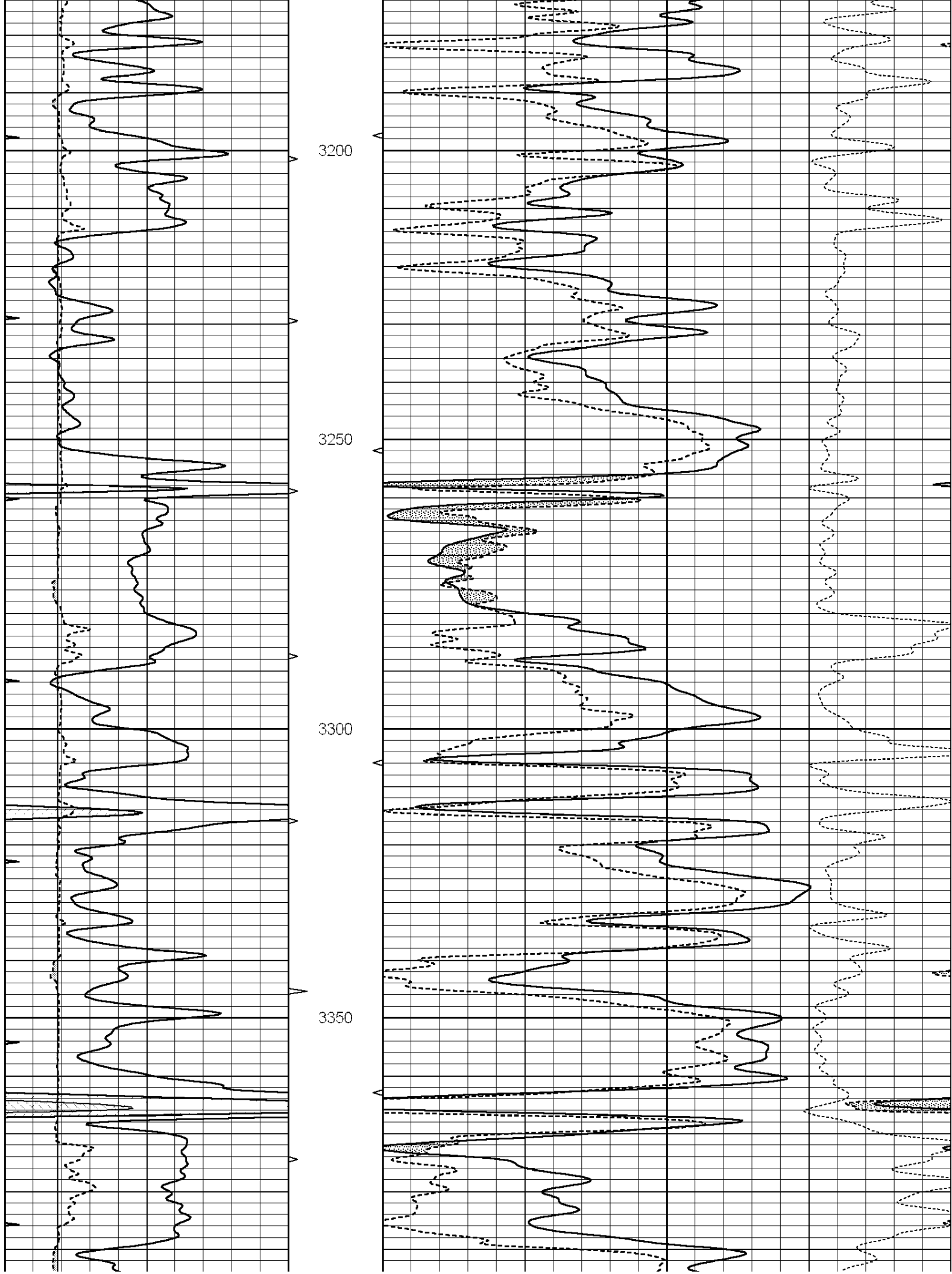


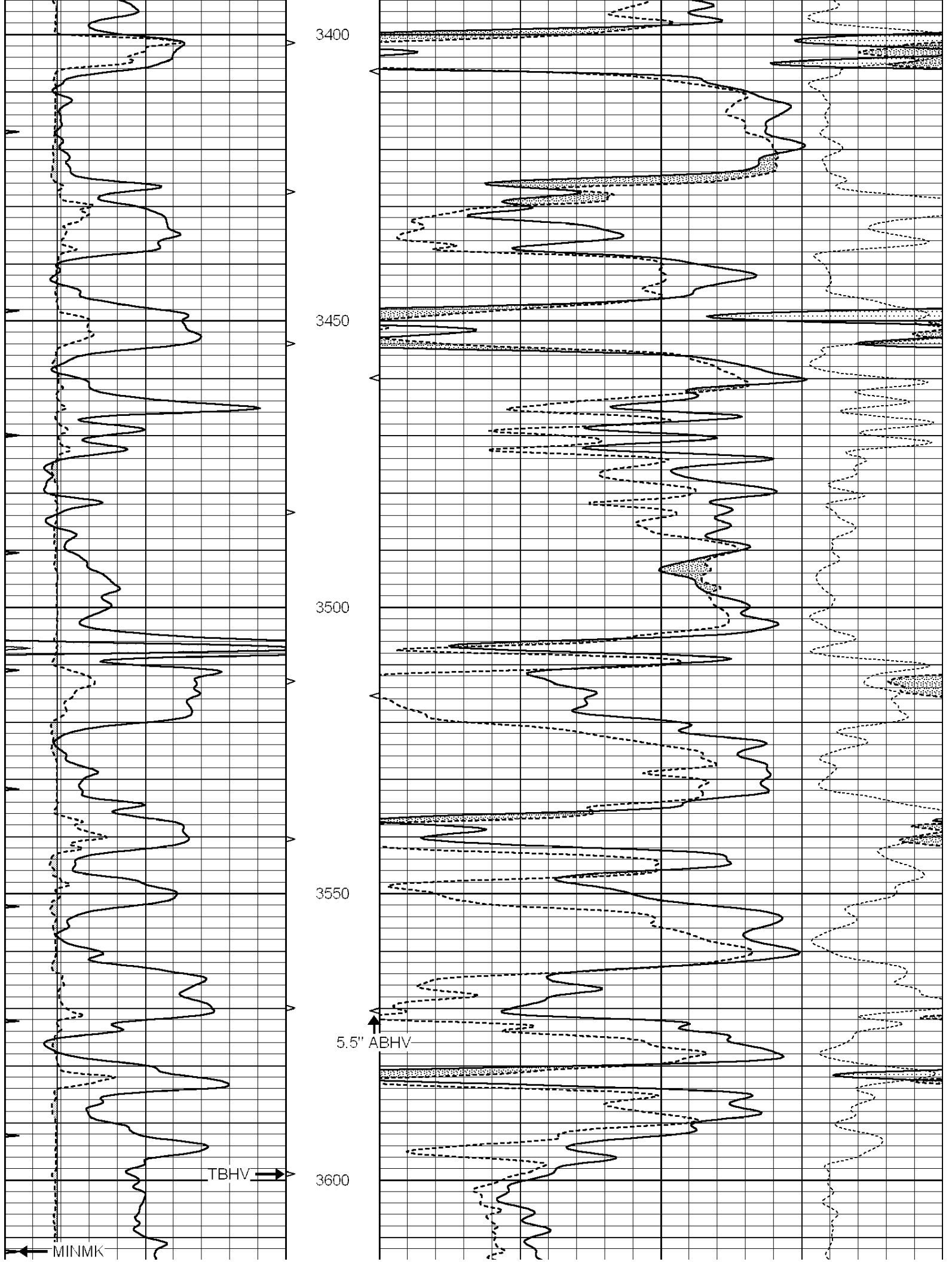
MAIN SECTION

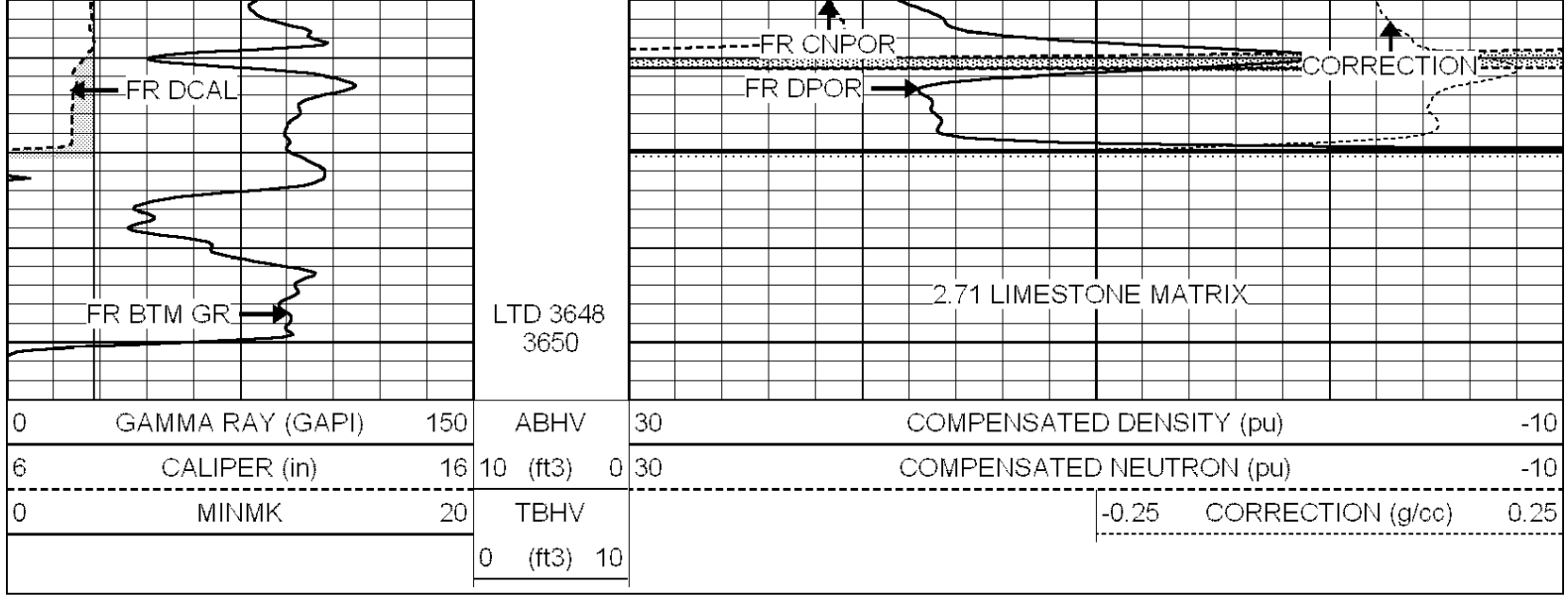
Database File: 26329ddn.db
 Dataset Pathname: pass3.4
 Presentation Format: den_neu
 Dataset Creation: Tue Dec 16 17:46:03 2014
 Charted by: Depth in Feet scaled 1:240

0	GAMMA RAY (GAPI)	150	ABHV	30	COMPENSATED DENSITY (pu)	-10
6	CALIPER (in)	16	10 (ft3)	0 30	COMPENSATED NEUTRON (pu)	-10
0	MINMK	20	TBHV		-0.25 CORRECTION (g/cc)	0.25
			0 (ft3)	10		





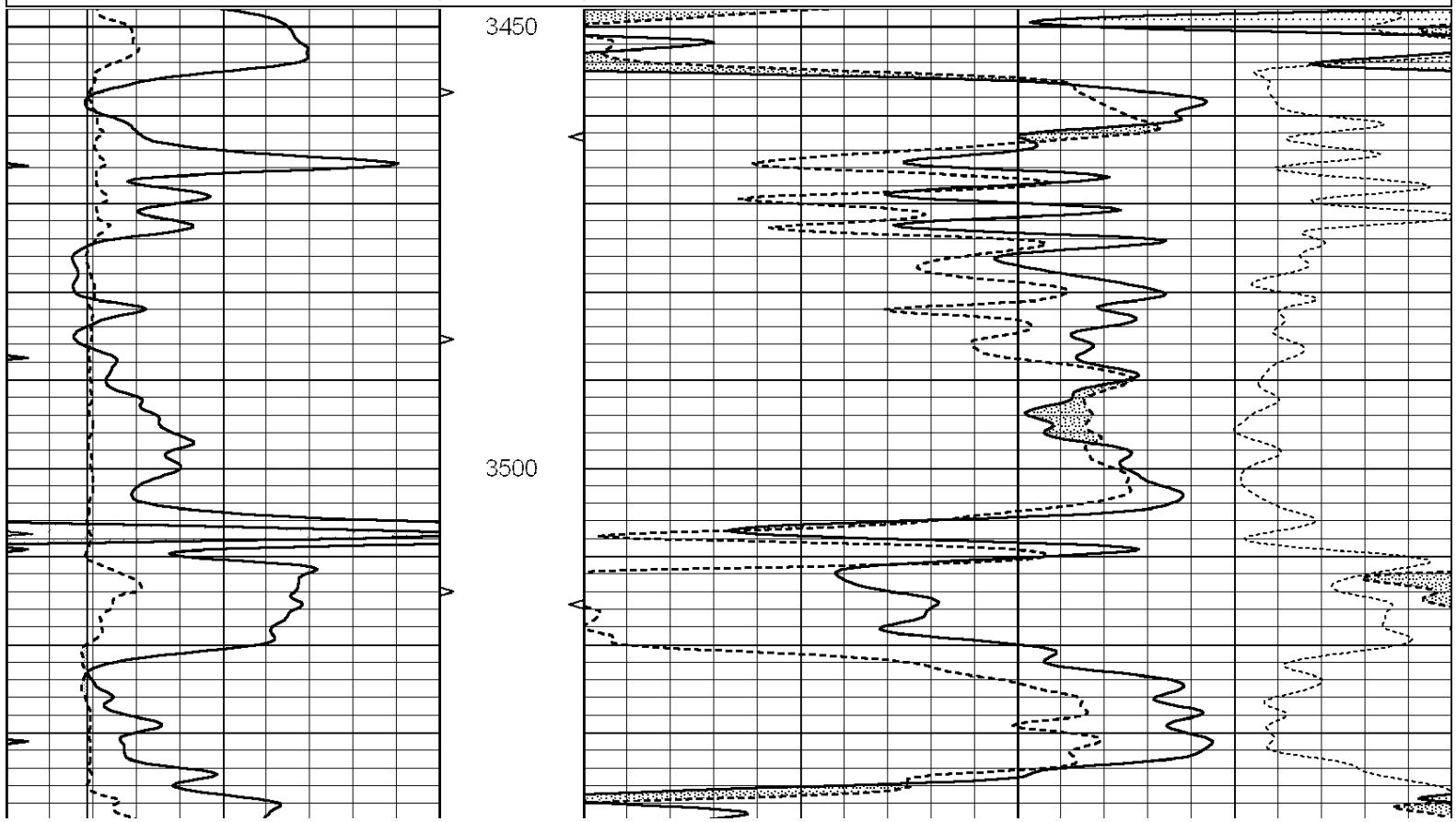


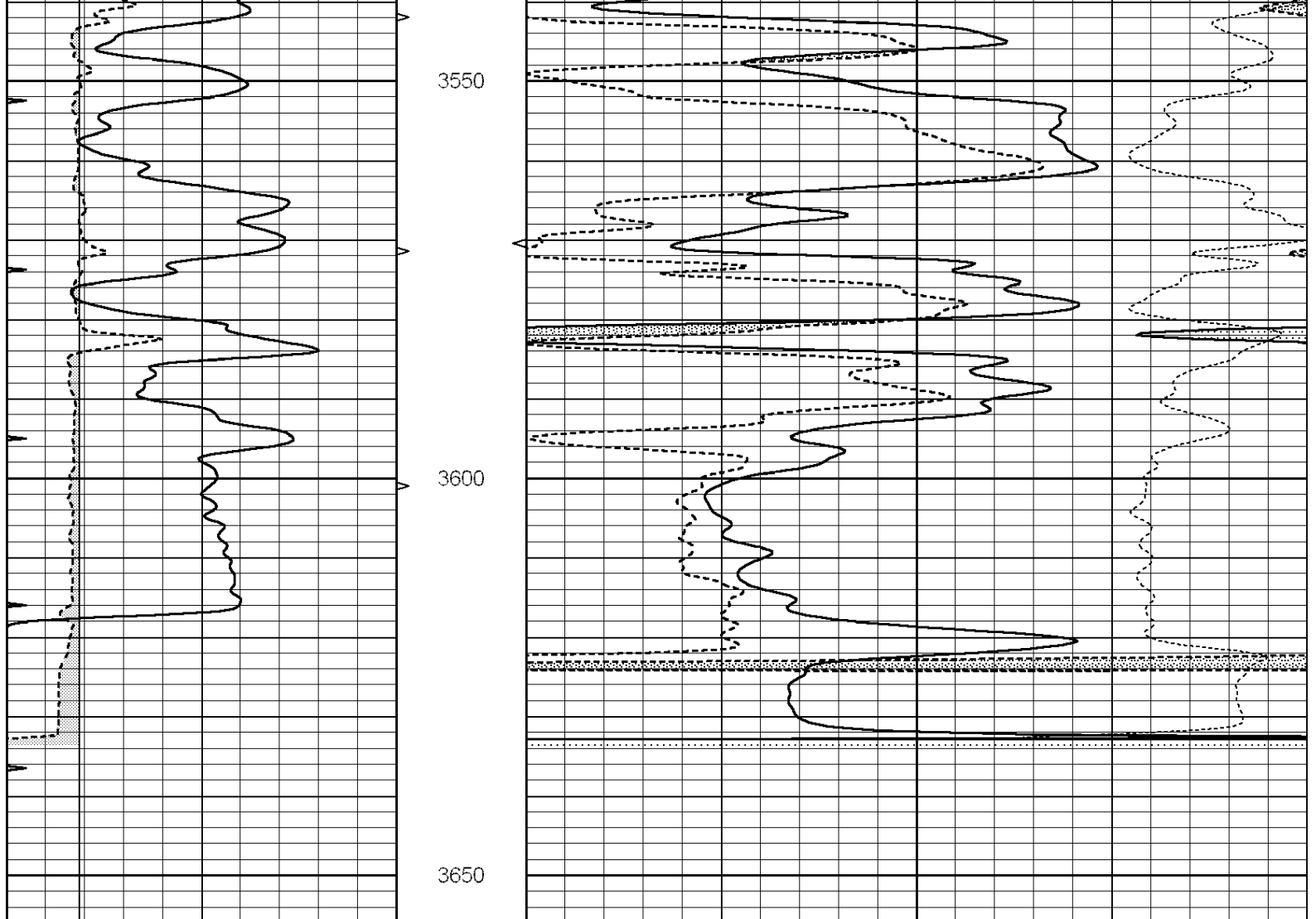


REPEAT SECTION

Database File: 26329ddn.db
 Dataset Pathname: pass2.3
 Presentation Format: den_neu
 Dataset Creation: Tue Dec 16 16:28:04 2014 by Calc SOC 120430
 Charted by: Depth in Feet scaled 1:240

0	GAMMA RAY (GAPI)	150	ABHV	30	COMPENSATED DENSITY (pu)	-10
6	CALIPER (in)	16	10 (ft3)	0 30	COMPENSATED NEUTRON (pu)	-10
0	MINMK	20	TBHV		-0.25 CORRECTION (g/cc)	0.25
			0 (ft3)	10		





0	GAMMA RAY (GAPI)	150	ABHV	30	COMPENSATED DENSITY (pu)	-10	
6	CALIPER (in)	16	10 (ft3)	0	30	COMPENSATED NEUTRON (pu)	-10
0	MINMK	20	TBHV			-0.25 CORRECTION (g/cc)	0.25
			0 (ft3)	10			

Calibration Report

Database File: 26329ddn.db
 Dataset Pathname: pass3.4
 Dataset Creation: Tue Dec 16 17:46:03 2014

Dual Induction Calibration Report

Serial-Model: PROBE9-DILG
 Surface Cal Performed: Sat Dec 06 09:31:12 2014
 Downhole Cal Performed: Mon Jul 28 12:02:56 2008
 After Survey Verification Performed: Mon Jul 28 12:02:56 2008

Surface Calibration

Loop:	Readings				References		Results	
	Air	Loop	V		Air	Loop	m	b
Deep	-0.014	0.629	V	0.000	400.000	mmho/m	670.000	-22.000
Medium	0.039	0.728	V	0.000	464.000	mmho/m	670.000	-35.000
Internal:	Zero	Cal		Zero	Cal		m	b
Deep	0.011	0.610	V	0.000	400.000	mmho/m	667.135	-7.256
Medium	0.005	0.712	V	0.000	464.000	mmho/m	655.677	-3.102

Downhole Calibration			Readings		References		Results	
	Zero	Cal		Zero	Cal		m'	b'
Deep	0.000	0.000	mmho/m	14.508	388.384	mmho/m	1.000	0.000
Medium	0.000	0.000	mmho/m	166.367	504.400	mmho/m	1.000	0.000
LL3		7.500	V		1400.000	Ohm-m		
		0.000	V		20.000	Ohm-m		
		-7.200	V		4000.000	mmho-m		

After Survey Verification			Readings		Targets		Results	
	Zero	Cal		Zero	Cal		m'	b'
Deep	0.000	0.000	mmho/m	0.000	0.000	mmho/m	0.000	0.000
Medium	0.000	0.000	mmho/m	0.000	0.000	mmho/m	0.000	0.000
LL3		1.000	Ohm-m		1.000	Ohm-m		
		0.000	Ohm-m		0.000	Ohm-m		
		1.000	mmho-m		1.000	mmho-m		

Litho Density Calibration Report
Serial: 004N Model: PRB

Master Calibration		Performed Fri May 30 11:01:00 2014			
	Background	Magnesium	Aluminum	Sandstone	
Window 1	1378.8	10804.6	3492.0	12453.4	cps
Window 2	1262.4	9313.5	3076.7	10594.7	cps
Window 3	1077.6	5668.7	2076.0	6314.8	cps
Window 4	306.4	313.0	306.4	315.6	cps
Long Space	0.0	8051.0	1814.3	9332.3	cps
Short Space	1.9	1706.1	1146.0	1707.6	cps
Rho		1.7100	2.5900	1.3800	g/cc
Pe		0.0000	2.5700	1.5500	
Rib Angle	: 45.0	Rib Slope	: 1.002	Density/Spine Ratio	: 0.571
Spine Angle	: 75.0	Spine Slope	: 3.745	Spine Intercept	: -18.9

Before Survey Verification		Performed Wed Dec 31 18:00:00 1969			
Window 1	0.0	0.0	0.0	0.0	cps
Window 2	0.0	0.0	0.0	0.0	cps
Window 3	0.0	0.0	0.0	0.0	cps
Window 4	0.0	0.0	0.0	0.0	cps
Long Space	0.0	0.0	0.0	0.0	cps
Short Space	0.0	0.0	0.0	0.0	cps
Measured Rho		0.0000	0.0000	0.0000	g/cc
Measured Correction		0.0000	0.0000	0.0000	g/cc
Measured Pe			0.0000	0.0000	

After Survey Verification		Performed Wed Dec 31 18:00:00 1969			
Window 1	0.0	0.0	0.0	0.0	cps
Window 2	0.0	0.0	0.0	0.0	cps
Window 3	0.0	0.0	0.0	0.0	cps
Window 4	0.0	0.0	0.0	0.0	cps
Long Space	0.0	0.0	0.0	0.0	cps
Short Space	0.0	0.0	0.0	0.0	cps
Measured Rho		0.0000	0.0000	0.0000	g/cc
Measured Correction		0.0000	0.0000	0.0000	a/cc

Measured Pe

0.0000

0.0000

Compensated Neutron Calibration Report

Serial Number: 070808
Tool Model: Probe

PRE-SURVEY VERIFICATION

Detector	Readings	Measured	Target
Short Space	cps		
Long Space	cps	pu	pu

POST-SURVEY VERIFICATION

Detector	Readings	Measured	Target
Short Space	cps		
Long Space	cps	pu	pu

Gamma Ray Calibration Report

Serial Number: 070558
Tool Model: OPEN_GR
Performed: Mon Nov 17 10:01:40 2014

Calibrator Value: 1.0 GAPI

Background Reading: 0.0 cps
Calibrator Reading: 1.0 cps

Sensitivity: 0.2800 GAPI/cps