



**COMPLETION
& PRODUCTION
SERVICES CO.**

**MICRO
LOG**

Company	BLACK DIAMOND OIL, INC.	Company	BLACK DIAMOND OIL, INC.
Well	GLENNEMEIER "A" #2	Well	GLENNEMEIER "A" #2
Field	WEST UNION	Field	WEST UNION
County	NORTON	County	NORTON
State	KANSAS	State	KANSAS
Location:	API # : 15-137-20727-0000	Other Services	CDL/CNL/DIL BTM GR
Permanent Datum	GROUND LEVEL	Elevation	2210
Log Measured From	330' FSL & 2310' FWL	K.B.	2215
Drilling Measured From	SEC 21 TWP 5S RGE 21W SE - SE - SW KELLY BUSHING	D.F.	2213
		G.L.	2210

Date	12/16/14
Run Number	TWO
Depth Driller	3650
Depth Logger	3648
Bottom Logged Interval	3646
Top Log Interval	3000
Casing Driller	8 5/8" 219'
Casing Logger	220
Bit Size	7 7/8"
Type Fluid in Hole	CHEMICAL MUD
Density / Viscosity	9.2/53
pH / Fluid Loss	10.5/8.0
Source of Sample	FLOWLINE
Rim @ Meas. Temp	.950@80F
Rmf @ Meas. Temp	.713@80F
Rmc @ Meas. Temp	1.14@80F
Source of Rmf / Rmc	MEASUREMENT
Rim @ BHT	.460@113F
Time Circulation Stopped	4 HOURS
Time Logger on Bottom	3:45 P.M.
Maximum Recorded Temperature	113F
Equipment Number	4854
Location	HAYS, KANSAS
Recorded By	JEFF LUEBBERS
Witnessed By	JEFF LAWLER

<<< Fold Here >>>

All interpretations are opinions based on inferences from electrical or other measurements and we cannot and do not guarantee the accuracy or correctness of any interpretation, and we shall not, except in the case of gross or willful negligence on our part, be liable or responsible for any loss, costs, damages, or expenses incurred or sustained by anyone resulting from any interpretation made by any of our officers, agents or employees. These interpretations are also subject to our general terms and conditions set out in our current Price Schedule.

Comments

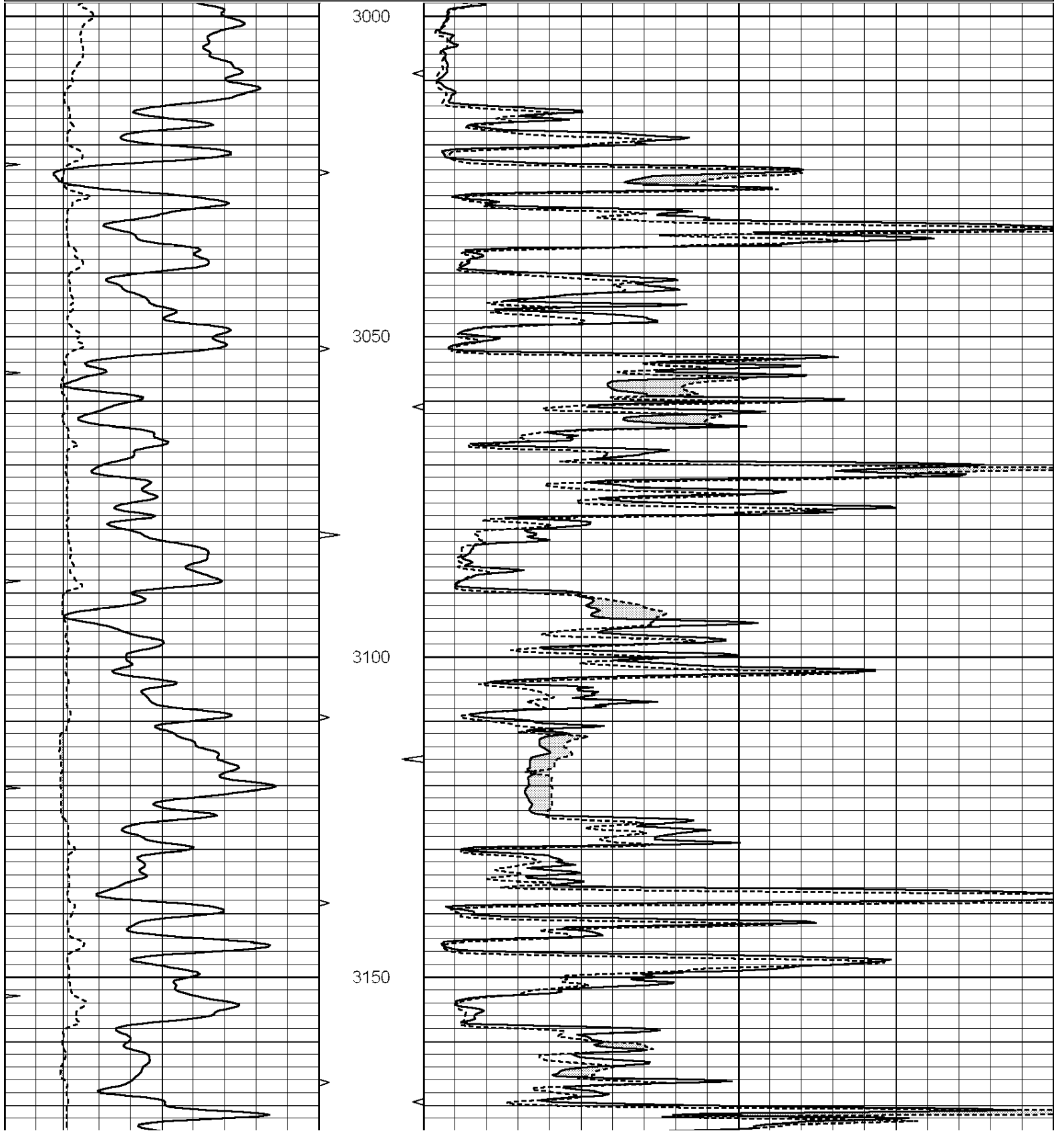
THANK YOU FOR USING "NABORS" HAYS, KANSAS (785) 628-6395
 DIRECTIONS
 LOGAN, KS., W. TO "RD. 12", 1 1/2S. TO STOP SIGN, 1W., 2S. TO TANK BATTERY, 3/4W. INTO S. OF THE

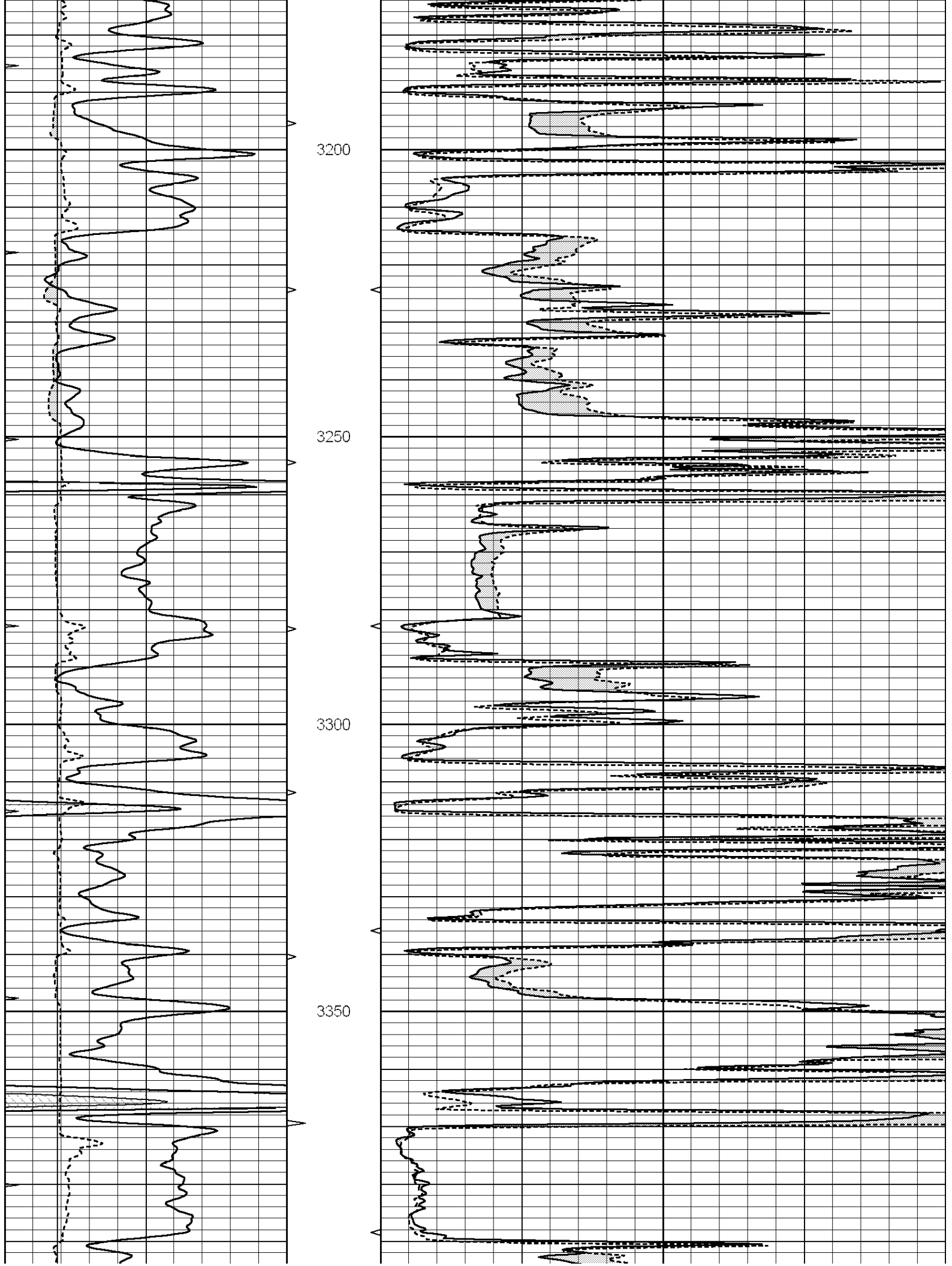


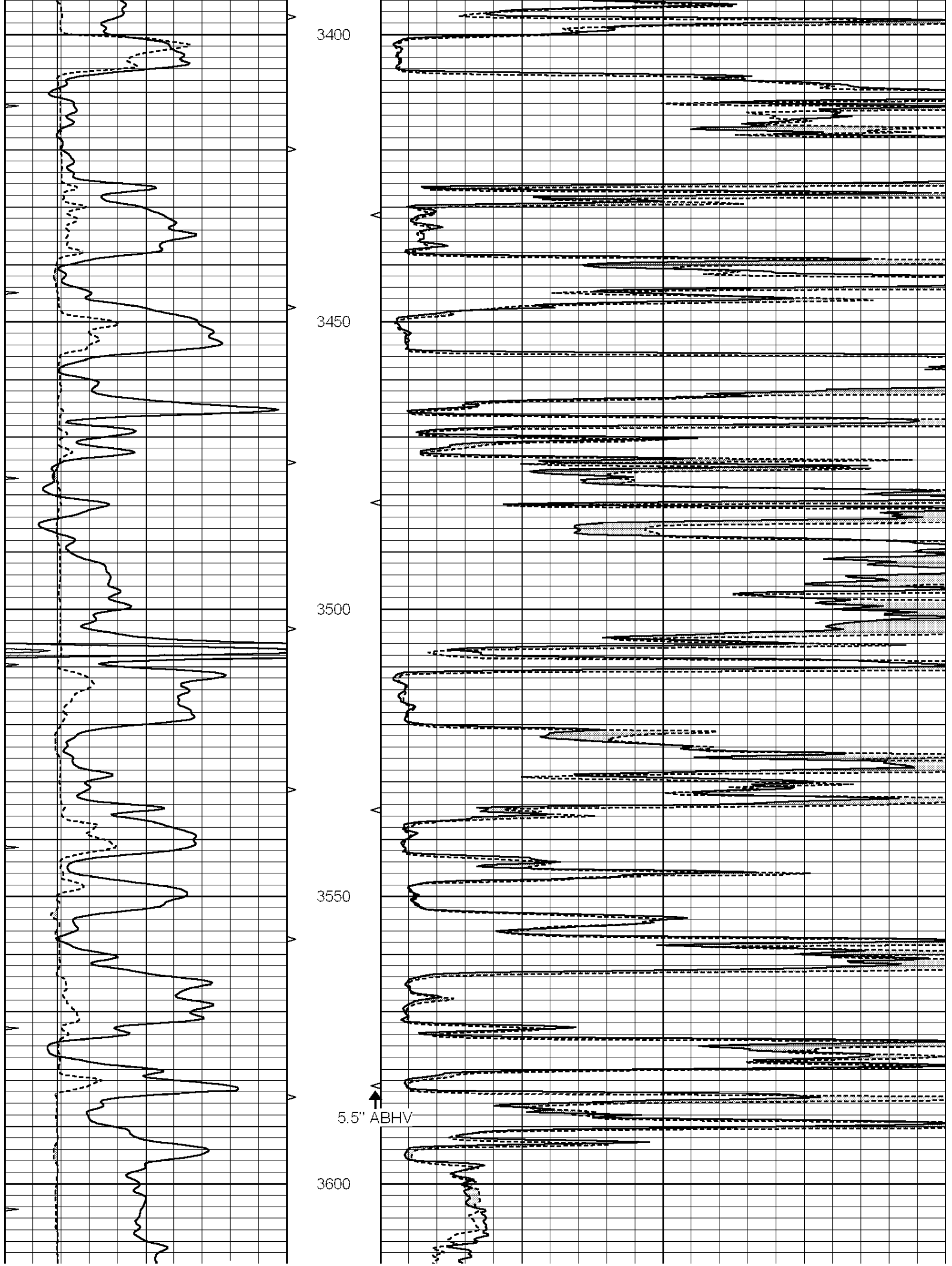
MAIN SECTION

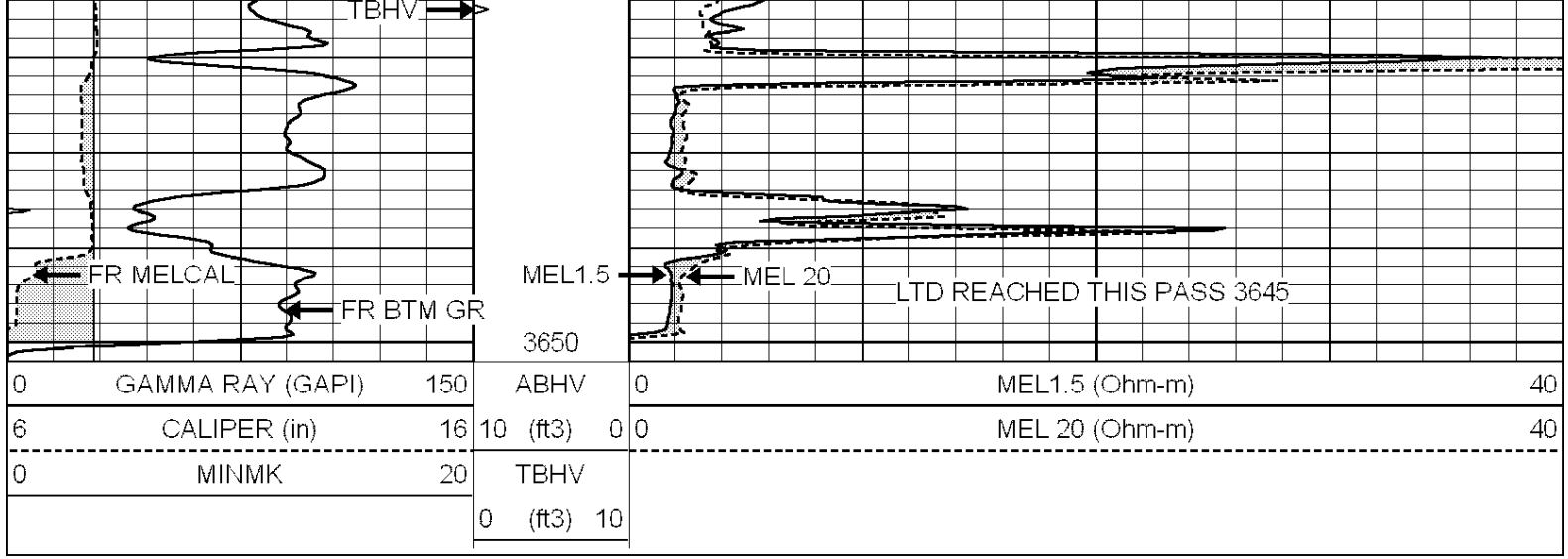
Database File: 26329ddn.db
 Dataset Pathname: pass8.9
 Presentation Format: micro
 Dataset Creation: Tue Dec 16 19:02:19 2014
 Charted by: Depth in Feet scaled 1:240

0	GAMMA RAY (GAPI)	150	ABHV	0	MEL1.5 (Ohm-m)	40
6	CALIPER (in)	16	10 (ft3)	0	MEL 20 (Ohm-m)	40
0	MINMK	20	TBHV			
			0 (ft3)	10		





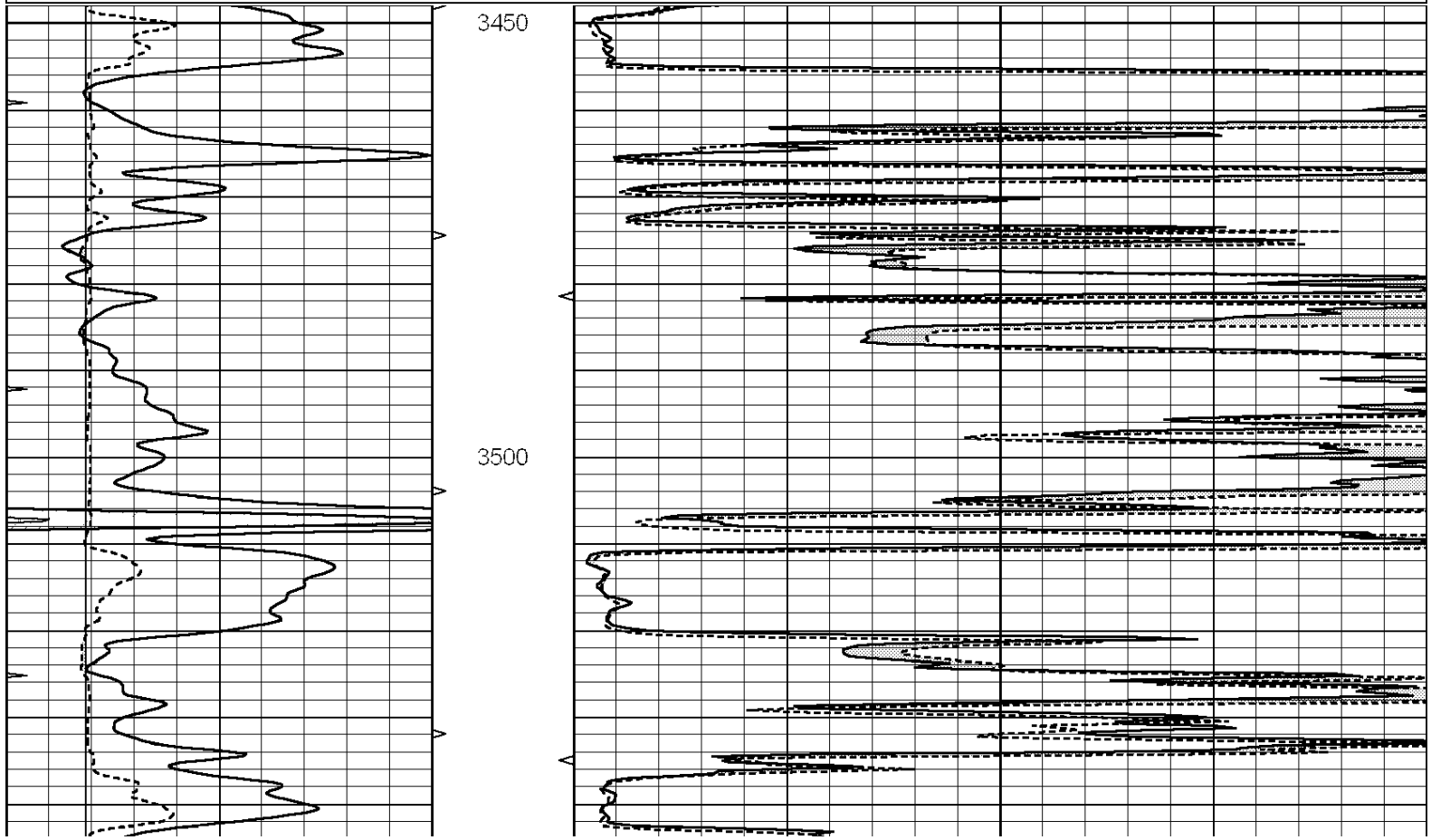


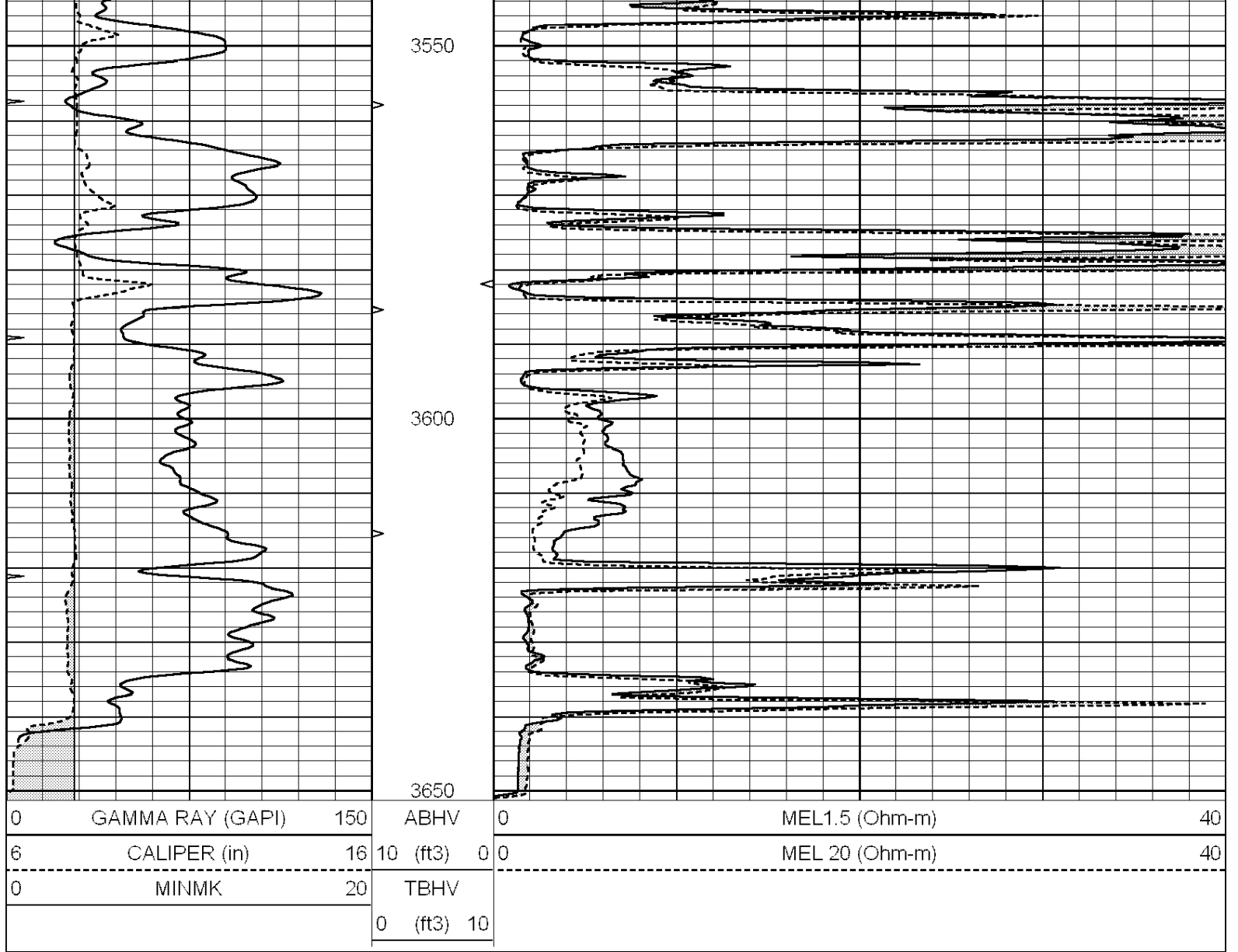


REPEAT SECTION

Database File: 26329ddn.db
 Dataset Pathname: pass7.5
 Presentation Format: micro
 Dataset Creation: Tue Dec 16 18:28:05 2014 by Calc SOC 120430
 Charted by: Depth in Feet scaled 1:240

0	GAMMA RAY (GAPI)	150	ABHV	0	MEL1.5 (Ohm-m)	40
6	CALIPER (in)	16	10 (ft3)	0 0	MEL 20 (Ohm-m)	40
0	MINMK	20	TBHV			
			0 (ft3)	10		





Calibration Report

Database File: 26329ddn.db
 Dataset Pathname: pass8.9
 Dataset Creation: Tue Dec 16 19:02:19 2014

MICRO Calibration Report

Serial Number:	2	
Tool Model:	PROBE	
Performed:	Tue Dec 16 18:14:10 2014	
Caliper Calibration:	Gain=4.276	Offset=1.034
References	Low Cal	High Cal
Readings	8.200	16.000
	1.676	3.500
1.5" Calibration:	Gain=24.000	Offset=-0.500
References	Low Cal	High Cal
Readings	0.000	20.000
	0.041	1.202
2" Calibration:	Gain=48.000	Offset=-0.800
References	Low Cal	High Cal
	0.000	20.000

Readings

0.003

1.041

Gamma Ray Calibration Report

Serial Number: GR3
Tool Model: OPEN
Performed: Tue Dec 16 18:13:19 2014

Calibrator Value: 200.0 GAPI

Background Reading: 3.0 cps
Calibrator Reading: 186.0 cps

Sensitivity: 0.8500 GAPI/cps