



**COMPLETION
& PRODUCTION
SERVICES CO.**

**DUAL INDUCTION
LOG**

Company BLACK DIAMOND OIL, INC.
Well GLENNEMEIER "A" #2
Field WEST UNION
County NORTON
State KANSAS

Company BLACK DIAMOND OIL, INC.
Well GLENNEMEIER "A" #2
Field WEST UNION
County NORTON State KANSAS

Location: API # : 15-137-20727-0000
330' FSL & 2310' FWL
SE - SE - SW
SEC 21 TWP 5S RGE 21W
Permanent Datum GROUND LEVEL Elevation 2210
Log Measured From KELLY BUSHING 5' A.G.L.
Drilling Measured From KELLY BUSHING
Other Services
CDL/CNL/MEI
BTM GR
Elevation
K.B. 2215
D.F. 2213
G.L. 2210

Date	12/16/14		
Run Number	ONE		
Depth Driller	3650		
Depth Logger	3648		
Bottom Logged Interval	3646		
Top Log Interval	00		
Casing Driller	8 5/8" 219'		
Casing Logger	220		
Bit Size	7 7/8"		
Type Fluid in Hole	CHEMICAL MUD	CHLORIDES 600 PPM	
Density / Viscosity	9.2/53		
pH / Fluid Loss	10.5/8.0		
Source of Sample	FLOWLINE		
Rim @ Meas. Temp	.950@80F		
Rmf @ Meas. Temp	.713@80F		
Rmc @ Meas. Temp	1.14@80F		
Source of Rmf / Rmc	MEASUREMENT		
Rim @ BHT	.460@113F		
Time Circulation Stopped	2 HOURS		
Time Logger on Bottom	3:45 P.M.		
Maximum Recorded Temperature	113F		
Equipment Number	4854		
Location	HAYS, KANSAS		
Recorded By	JEFF LUEBBERS		
Witnessed By	JEFF LAWLER		

<<< Fold Here >>>

All interpretations are opinions based on inferences from electrical or other measurements and we cannot and do not guarantee the accuracy or correctness of any interpretation, and we shall not, except in the case of gross or willful negligence on our part, be liable or responsible for any loss, costs, damages, or expenses incurred or sustained by anyone resulting from any interpretation made by any of our officers, agents or employees. These interpretations are also subject to our general terms and conditions set out in our current Price Schedule.

Comments

THANK YOU FOR USING "NABORS" HAYS, KANSAS (785) 628-6395
DIRECTIONS
LOGAN, KS., W. TO "RD. 12", 1 1/2S. TO STOP SIGN, 1W., 2S. TO TANK BATTERY, 3/4W. INTO S. OF THE



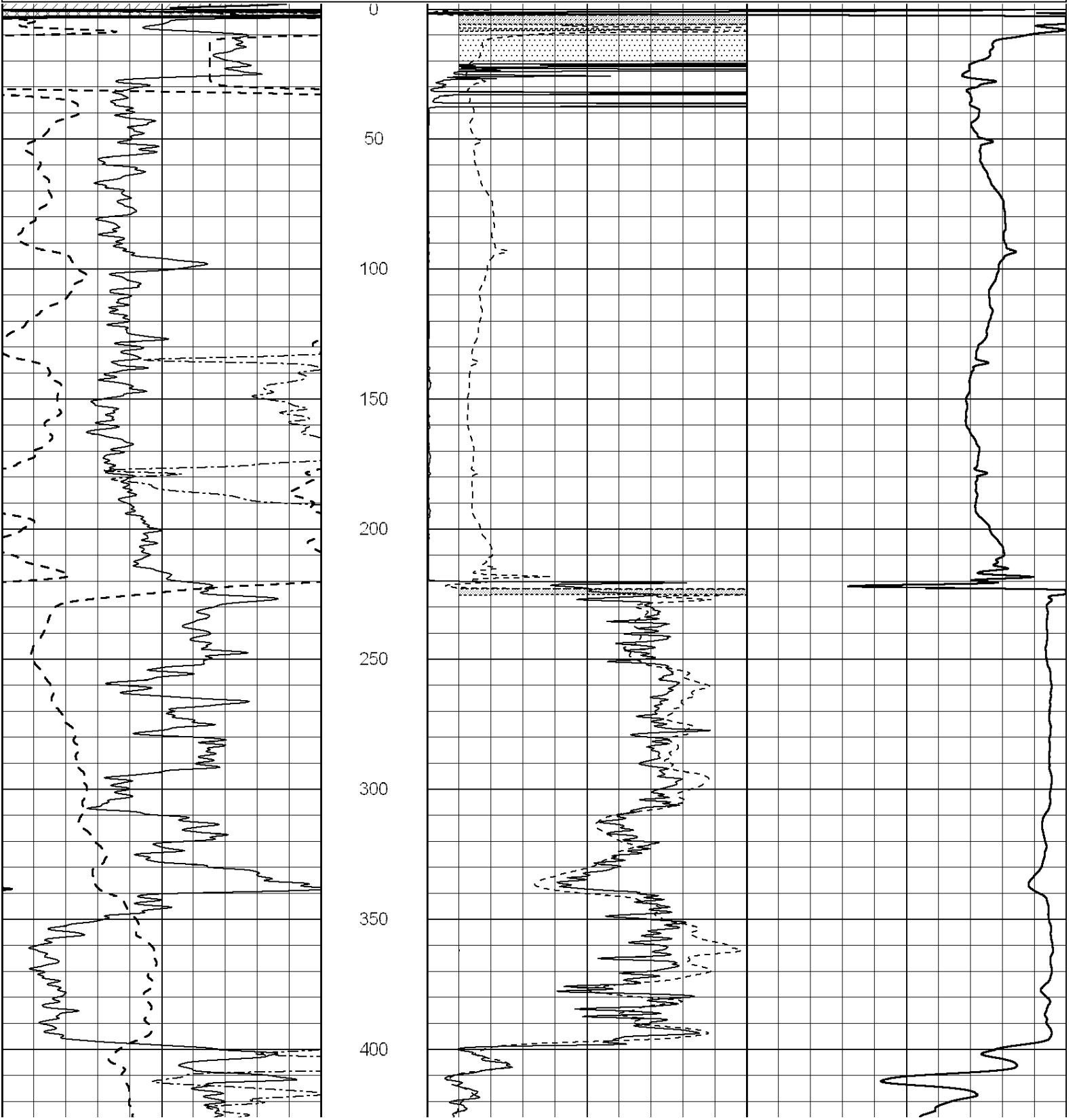
MAIN SECTION

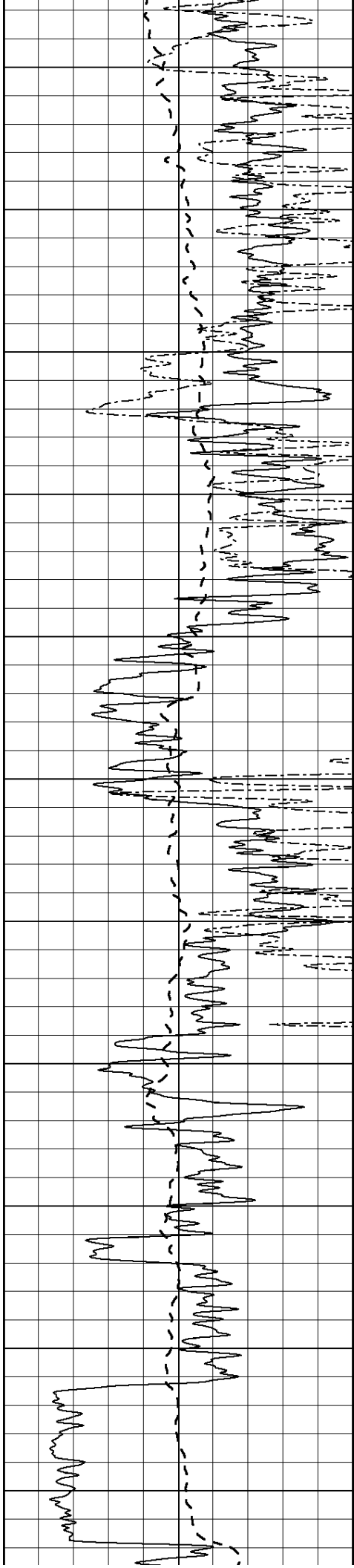
Database File: 26329ddn.db
 Dataset Pathname: pass3.4
 Presentation Format: dil2
 Dataset Creation: Tue Dec 16 17:46:03 2014
 Charted by: Depth in Feet scaled 1:600

0	Gamma Ray (GAPI)	150
-100	SP (mV)	100
0	RWA (Ohm-m)	1

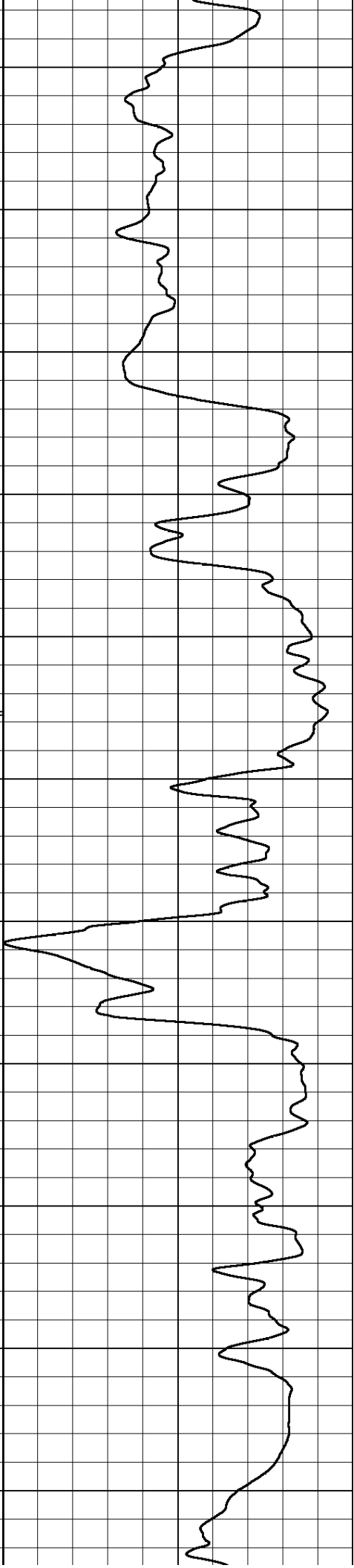
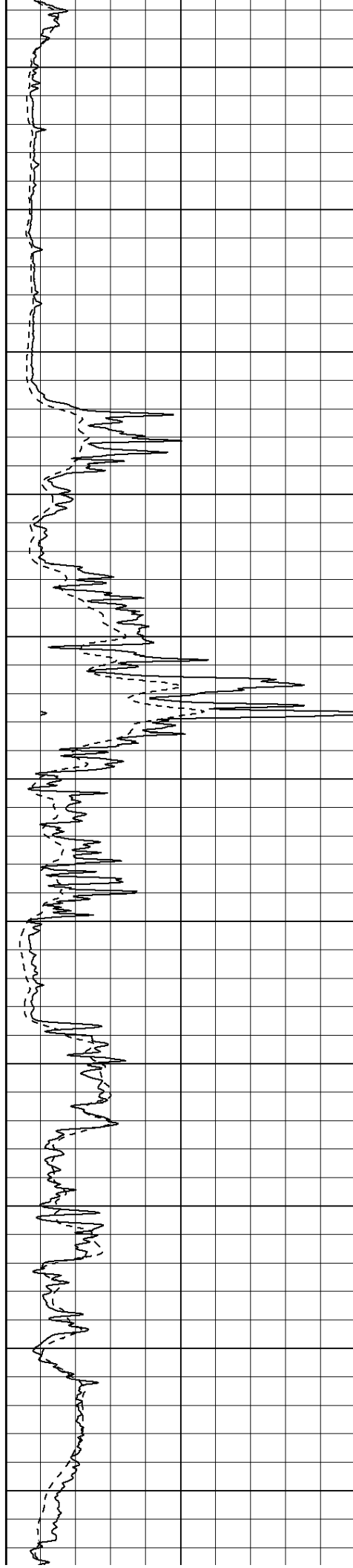
0	RLL3 (Ohm-m)	50
0	RILD (Ohm-m)	50
1000	CILD (mmho/m)	0

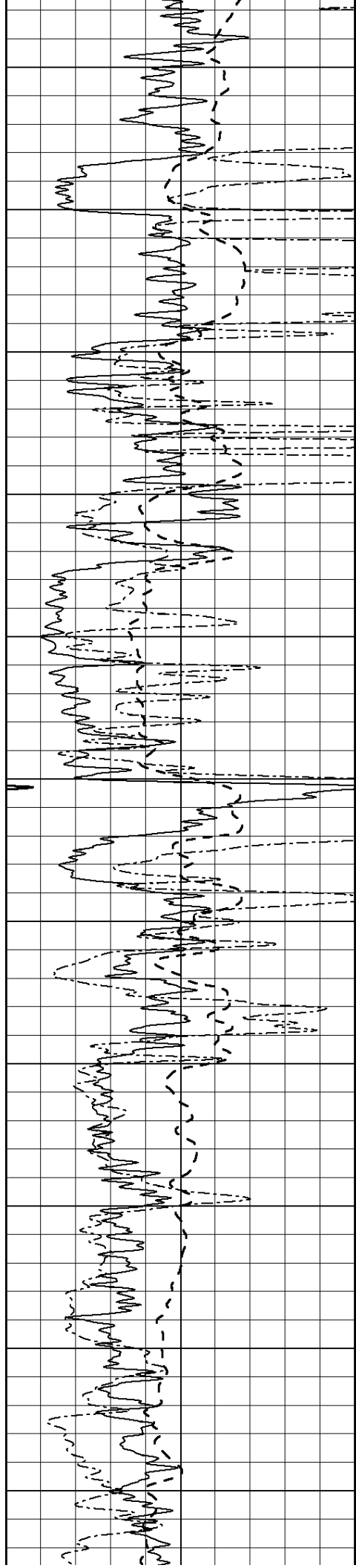
50	RILD X10 (Ohm-m)	500
50	RLL3 X10 (Ohm-m)	500





450
500
550
600
650
700
750
800
850
900
950





1000

1050

1100

1150

1200

1250

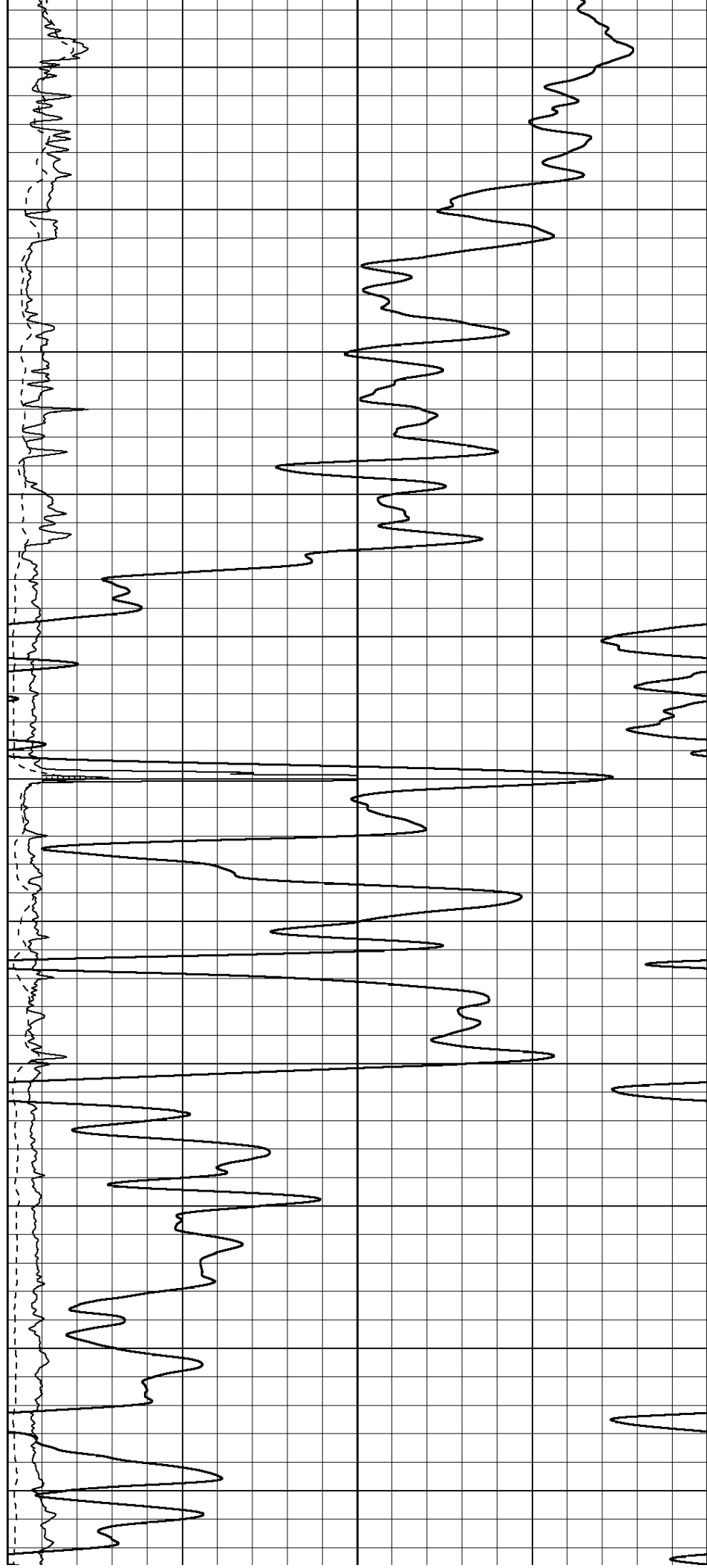
1300

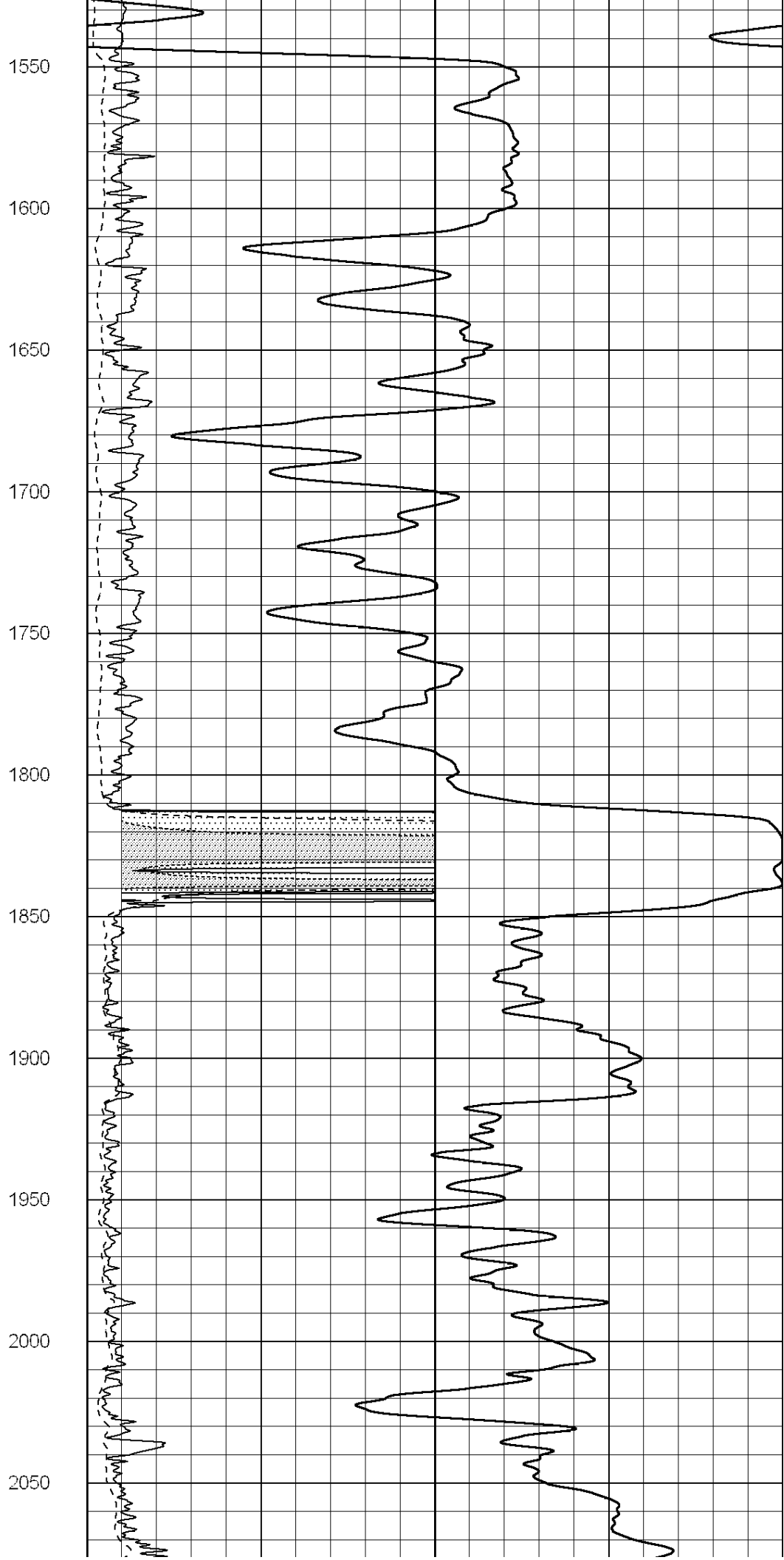
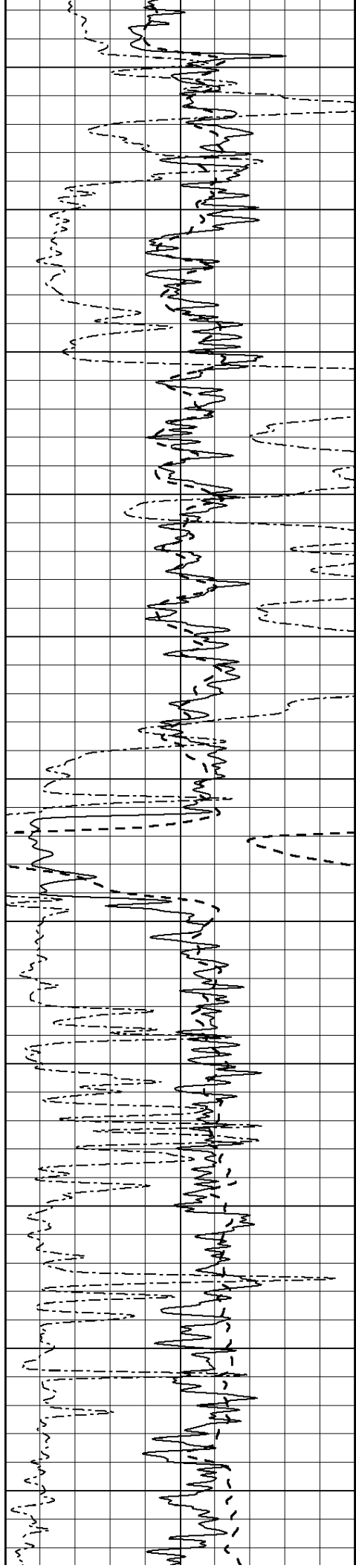
1350

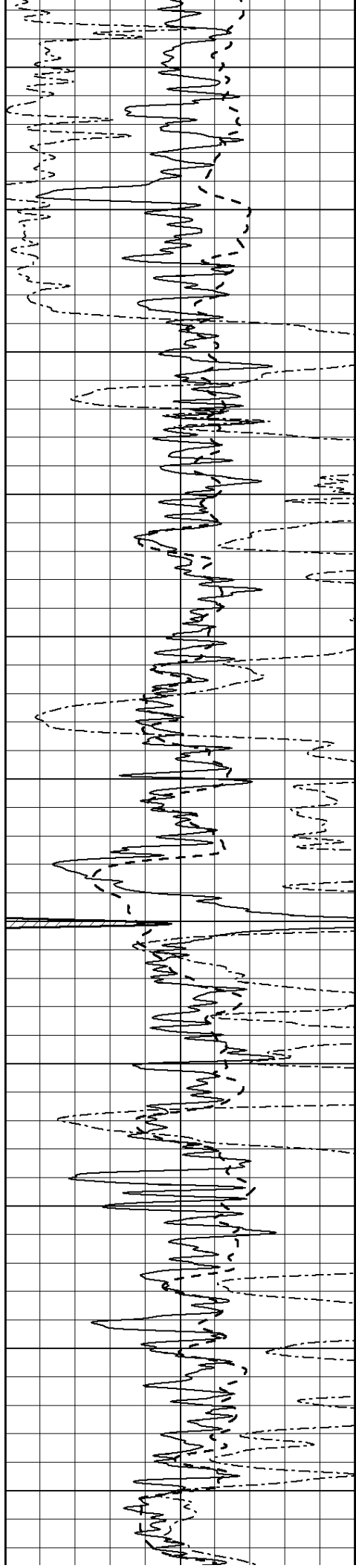
1400

1450

1500







2100

2150

2200

2250

2300

2350

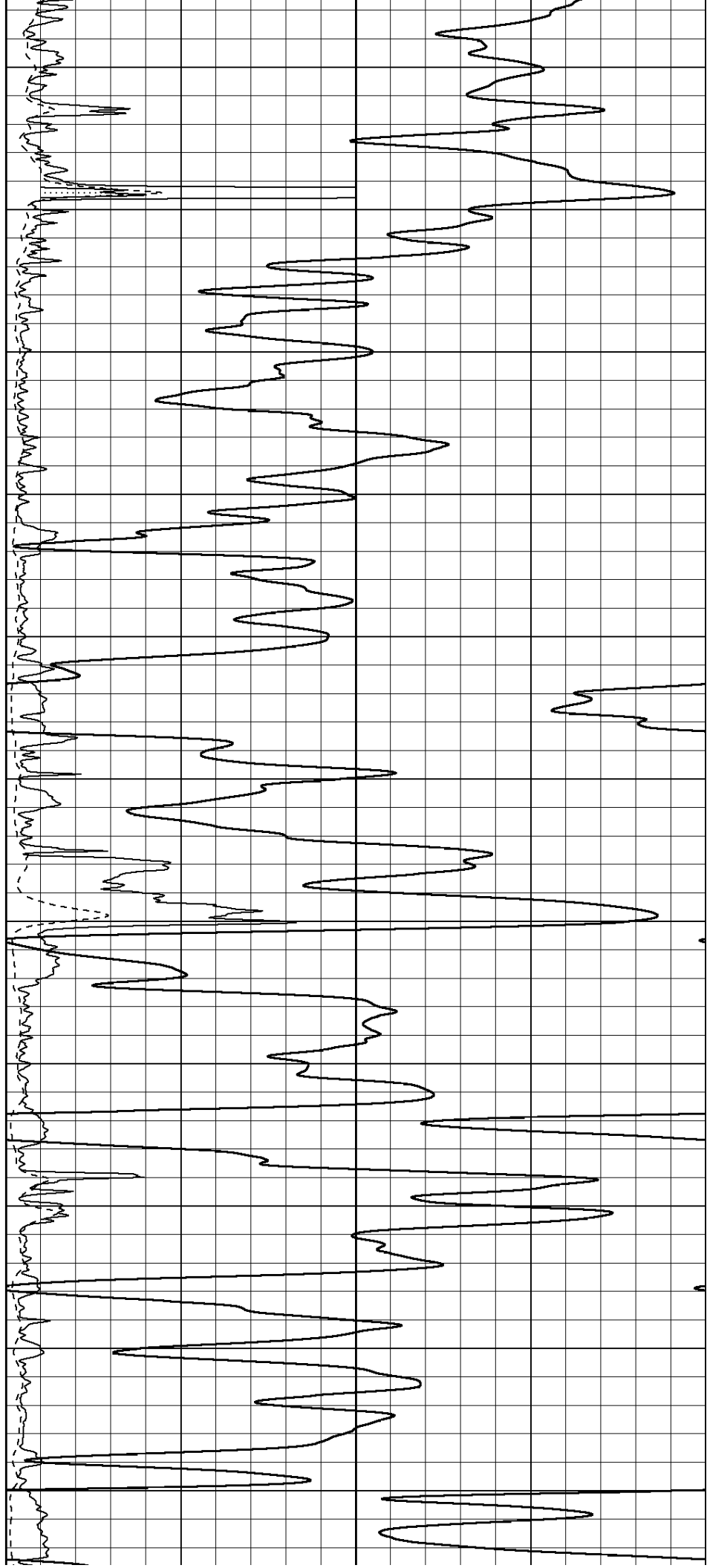
2400

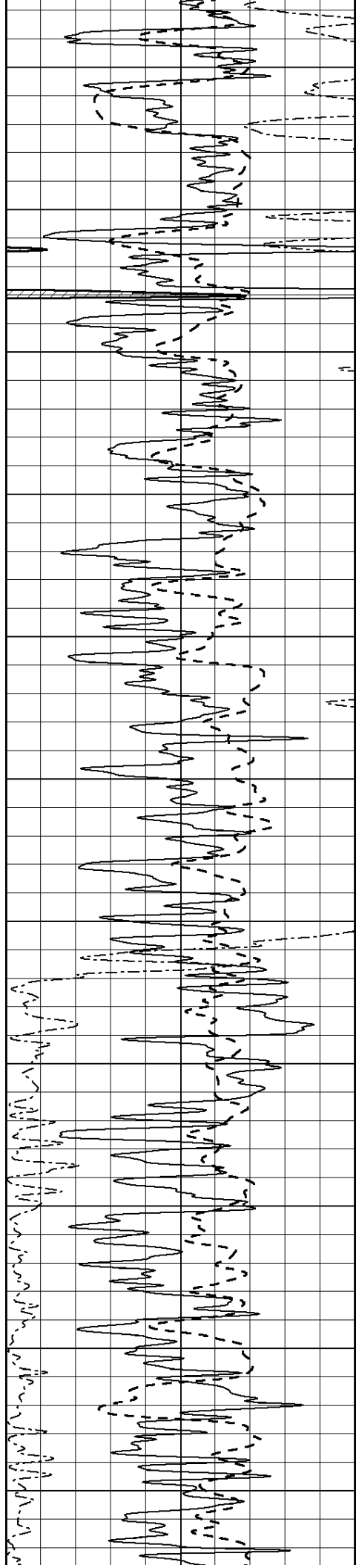
2450

2500

2550

2600





2650

2700

2750

2800

2850

2900

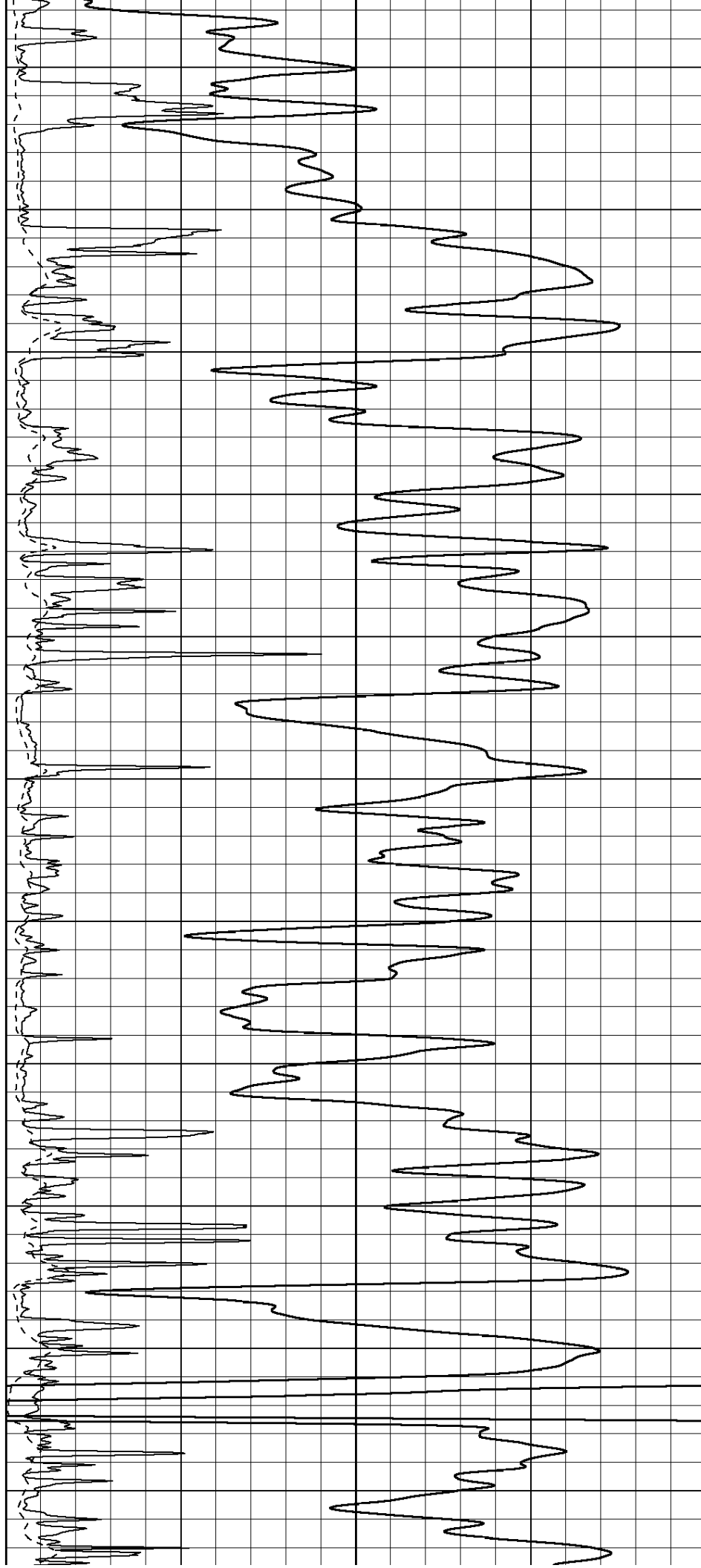
2950

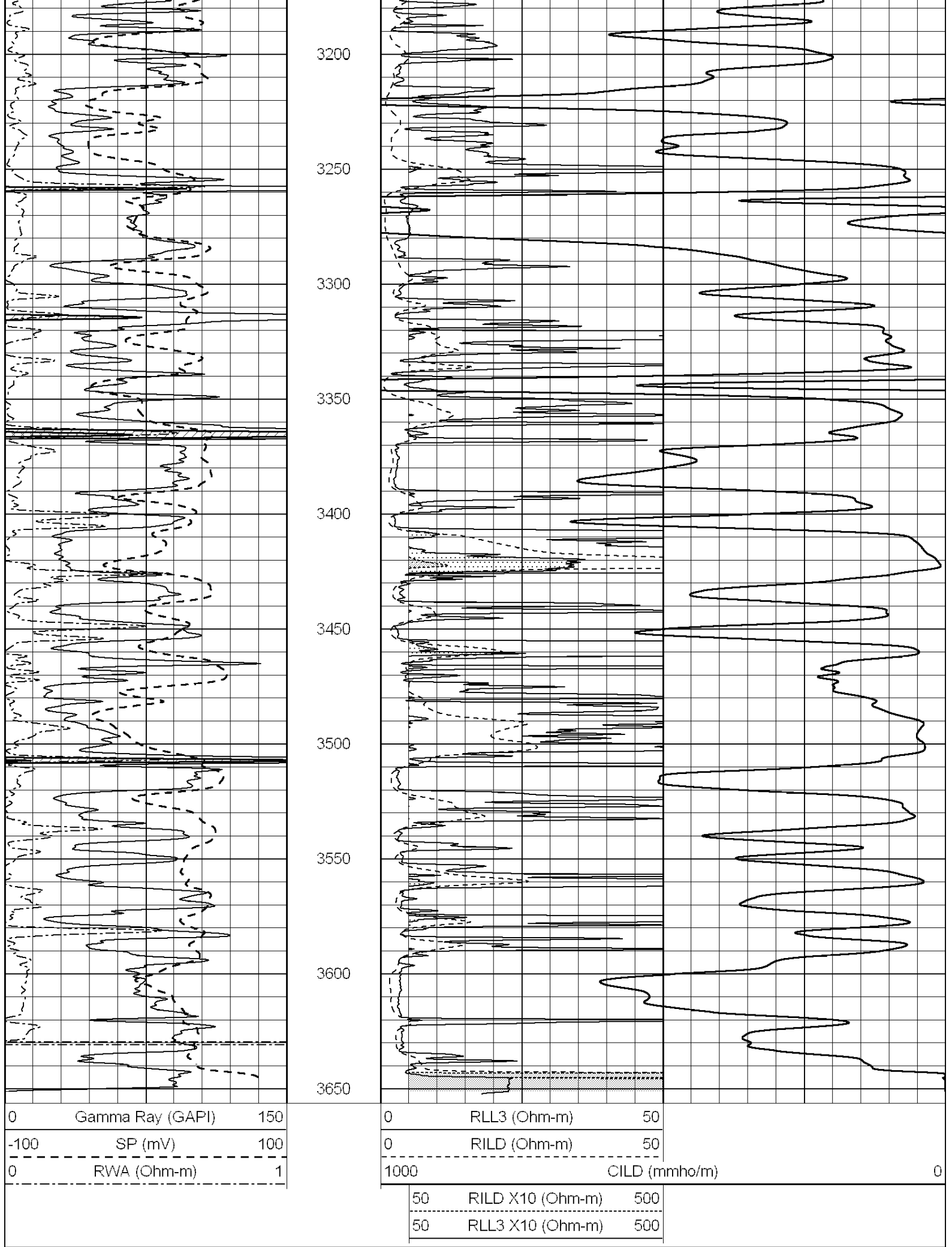
3000

3050

3100

3150





0	Gamma Ray (GAPI)	150
-100	SP (mV)	100
0	RWA (Ohm-m)	1

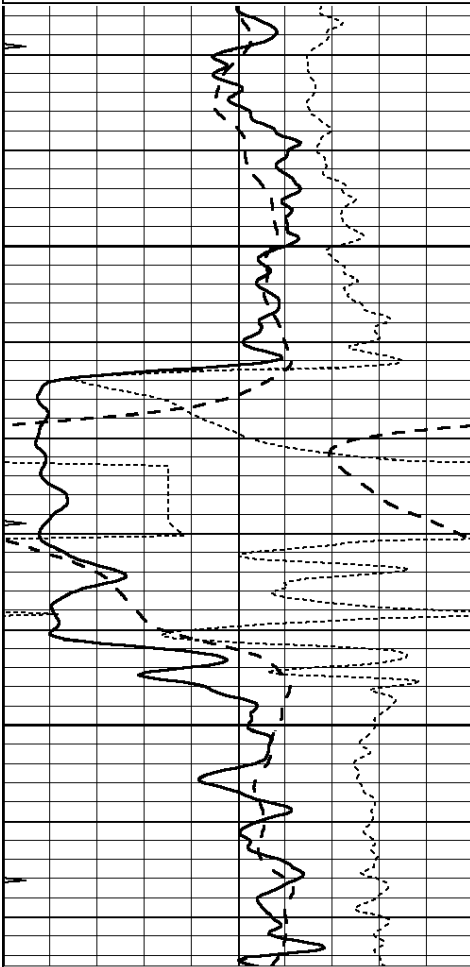
0	RLL3 (Ohm-m)	50
0	RILD (Ohm-m)	50
1000	CILD (mmho/m)	0
50	RILD X10 (Ohm-m)	500
50	RLL3 X10 (Ohm-m)	500

ANHYDRITE

Database File: 26329ddn.db
 Dataset Pathname: pass3.5
 Presentation Format: _dil
 Dataset Creation: Tue Dec 16 17:47:40 2014
 Charted by: Depth in Feet scaled 1:240

0	GAMMA RAY (GAPI)	150
-100	SP (mV)	100
-250	Rxo/Rt	50
0	MINMK	20

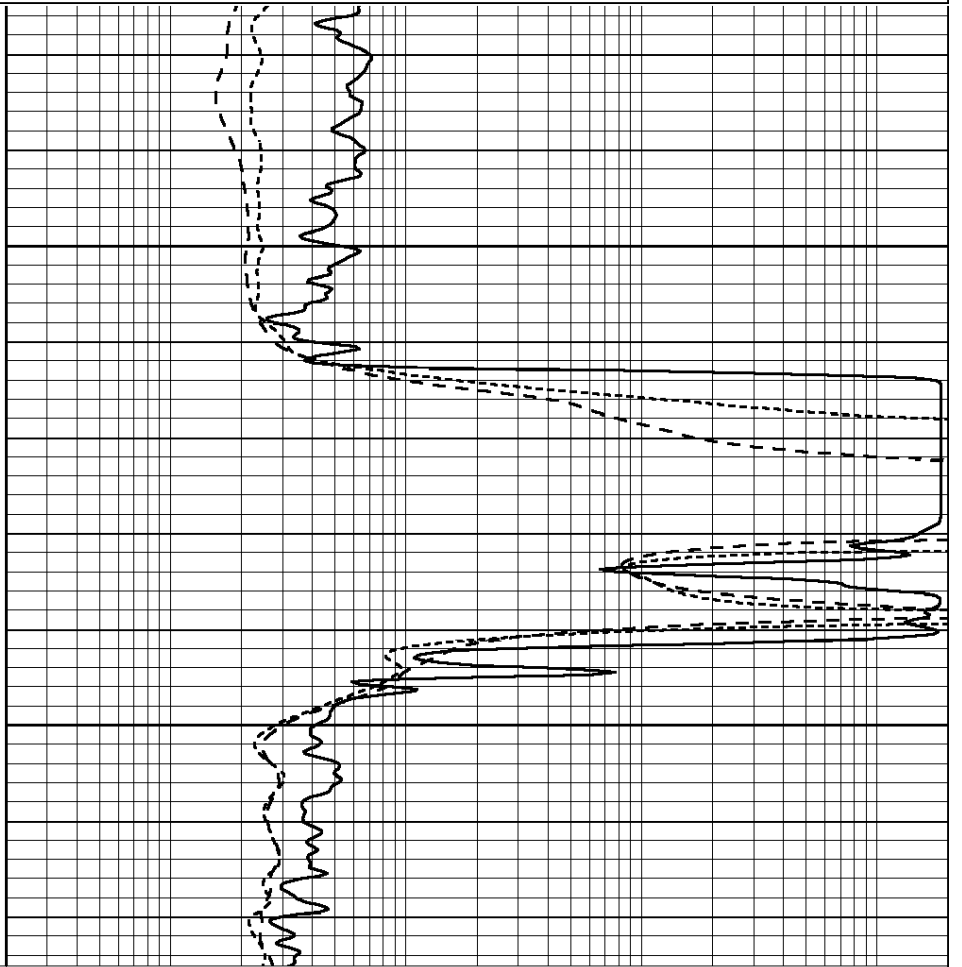
0.2	SHALLOW GUARD (Ohm-m)	2000
0.2	DEEP INDUCTION (Ohm-m)	2000
0.2	MEDIUM INDUCTION (Ohm-m)	2000



1800

1850

0	GAMMA RAY (GAPI)	150
-100	SP (mV)	100
-250	Rxo/Rt	50
0	MINMK	20



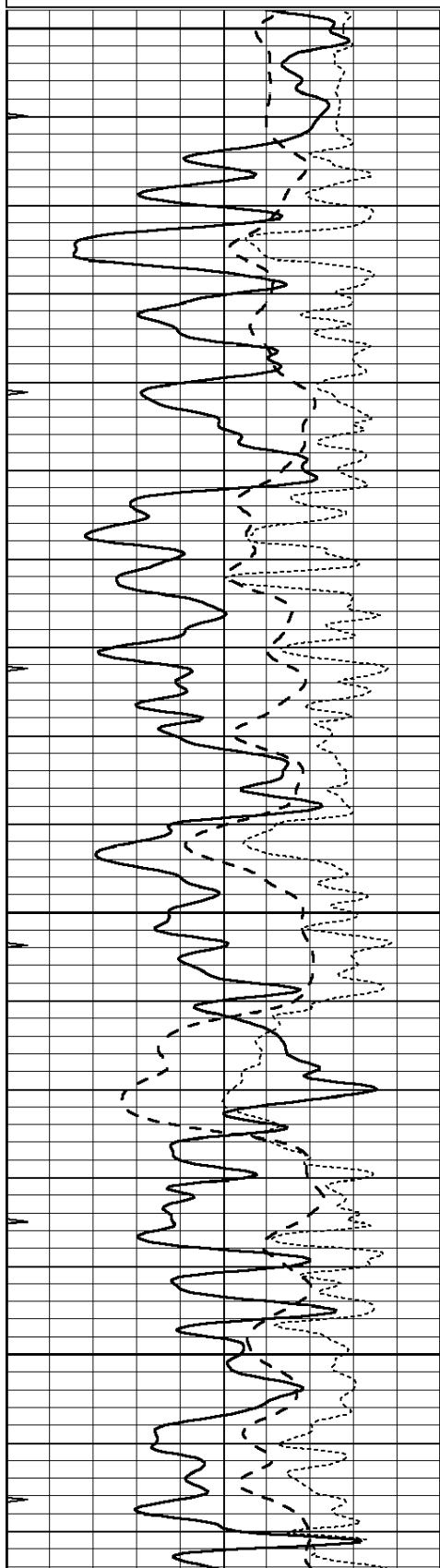
0.2	SHALLOW GUARD (Ohm-m)	2000
0.2	DEEP INDUCTION (Ohm-m)	2000
0.2	MEDIUM INDUCTION (Ohm-m)	2000

MAIN SECTION

Database File: 26329ddn.db
 Dataset Pathname: pass3.4
 Presentation Format: _dil
 Dataset Creation: Tue Dec 16 17:46:03 2014
 Charted by: Depth in Feet scaled 1:240

0	GAMMA RAY (GAPI)	150
-100	SP (mV)	100
-250	Rxo/Rt	50
0	MINMK	20

0.2	SHALLOW GUARD (Ohm-m)	2000
0.2	DEEP INDUCTION (Ohm-m)	2000
0.2	MEDIUM INDUCTION (Ohm-m)	2000

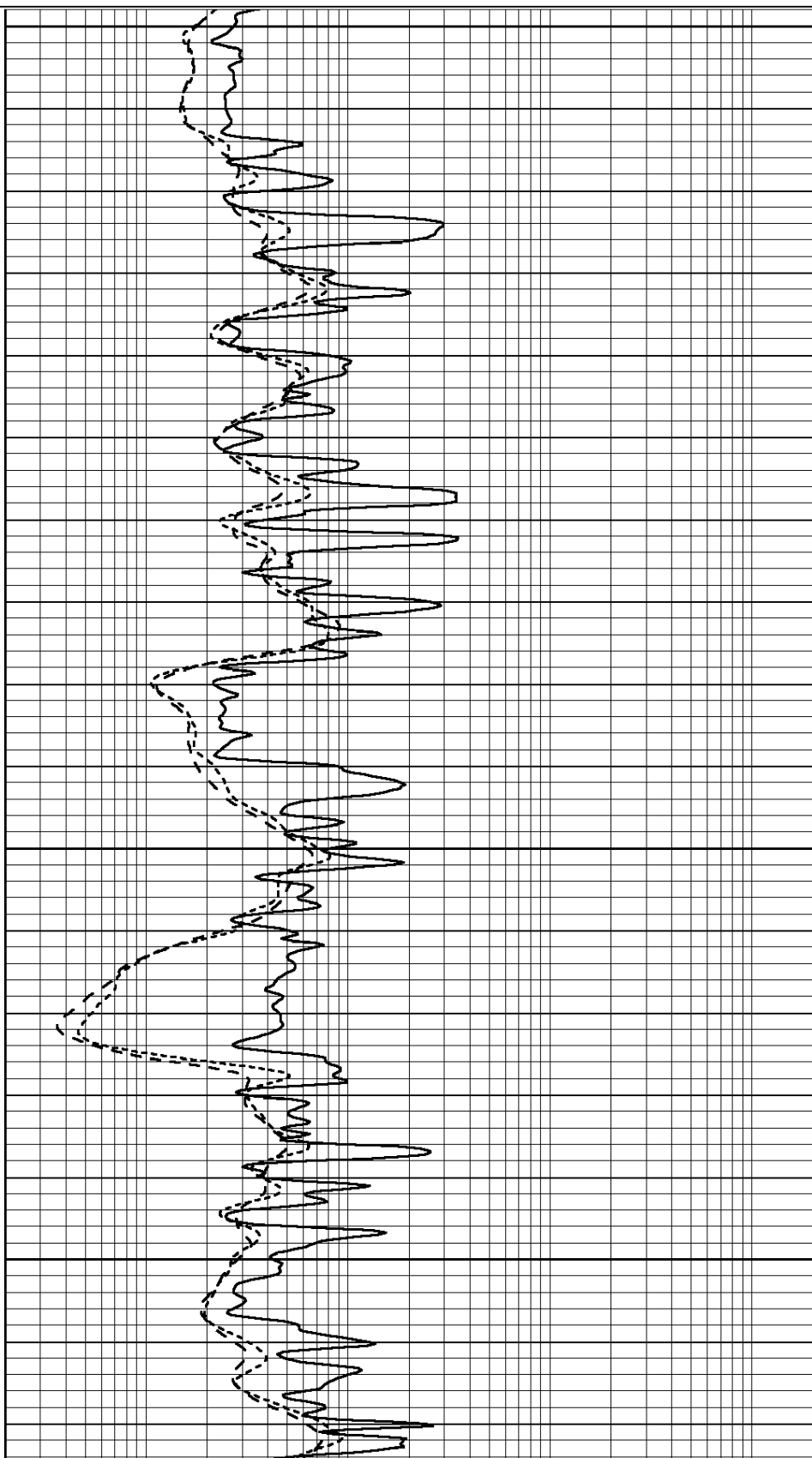


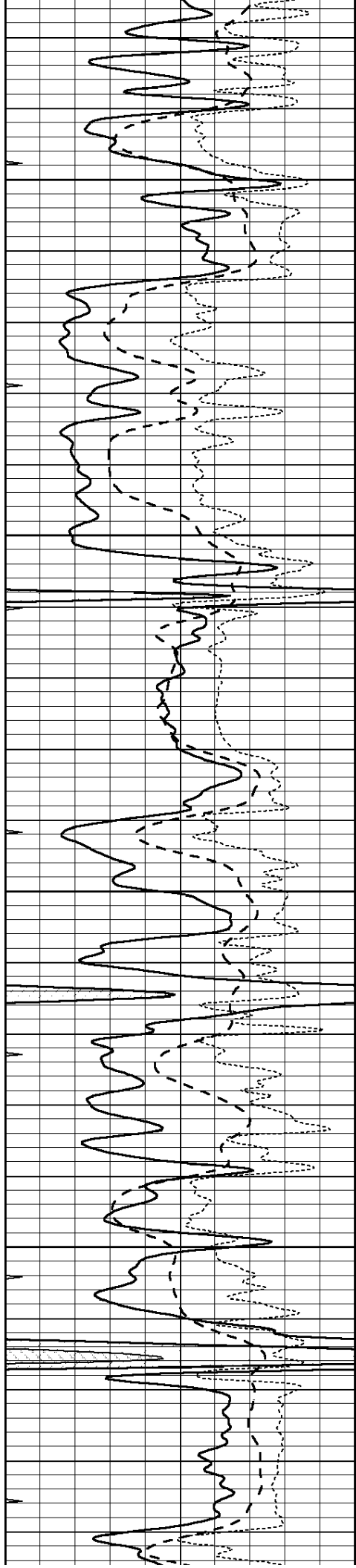
3000

3050

3100

3150



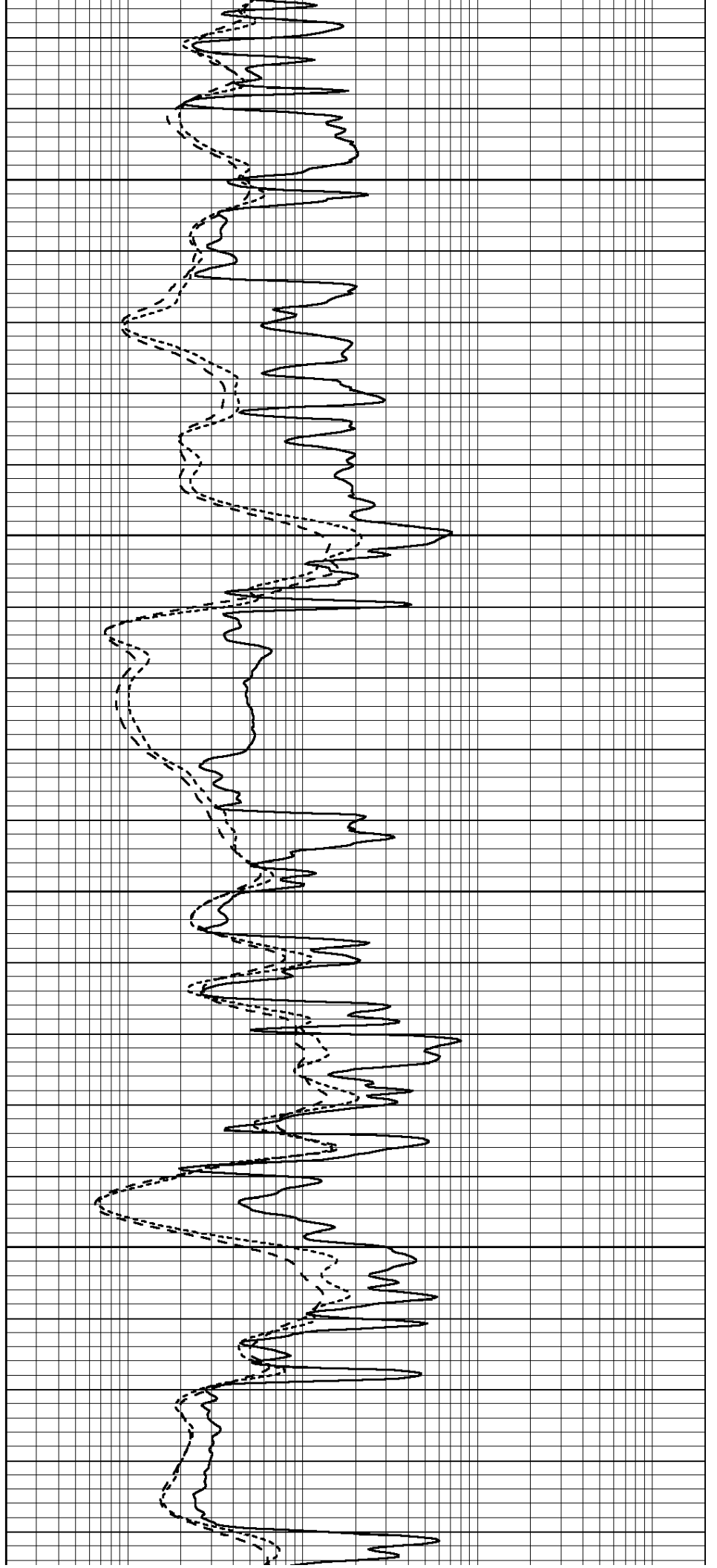


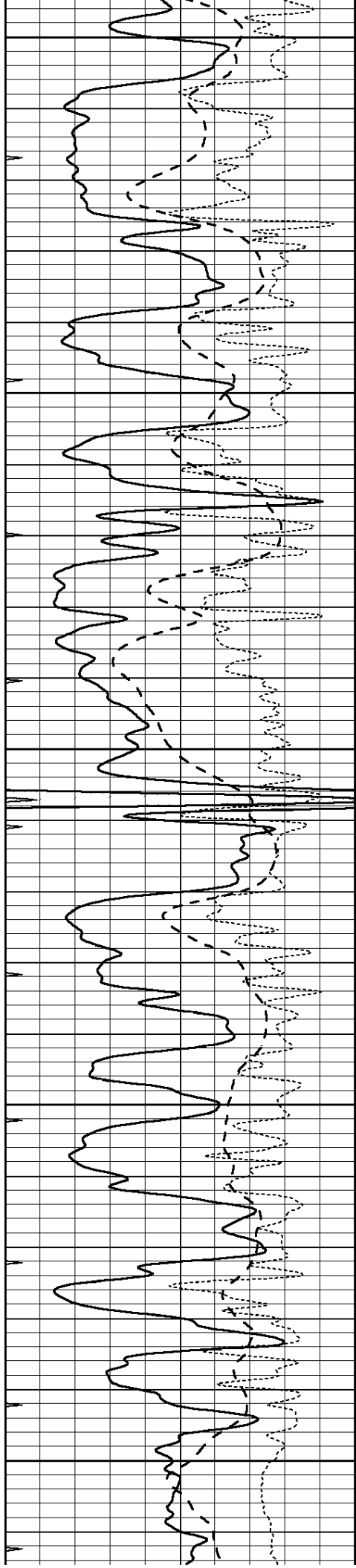
3200

3250

3300

3350





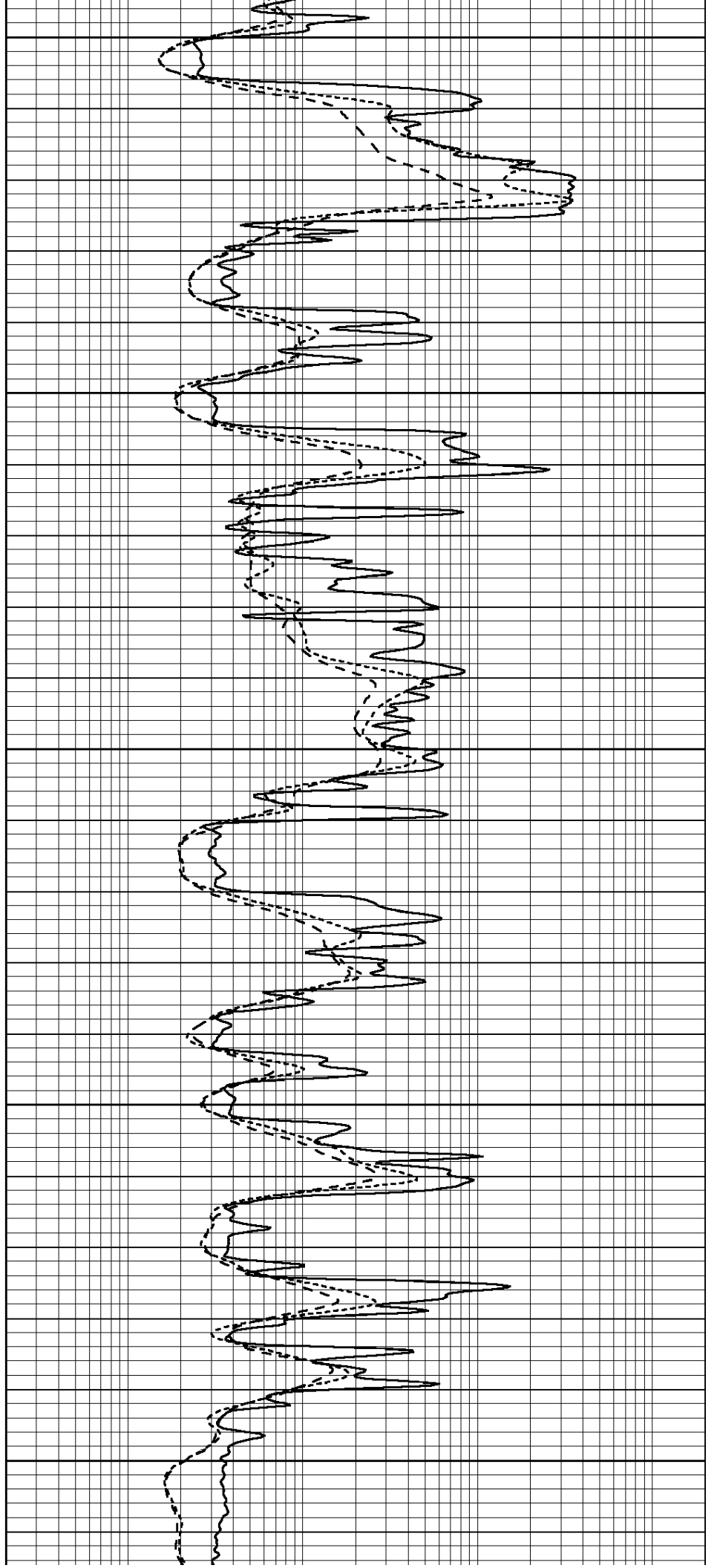
3400

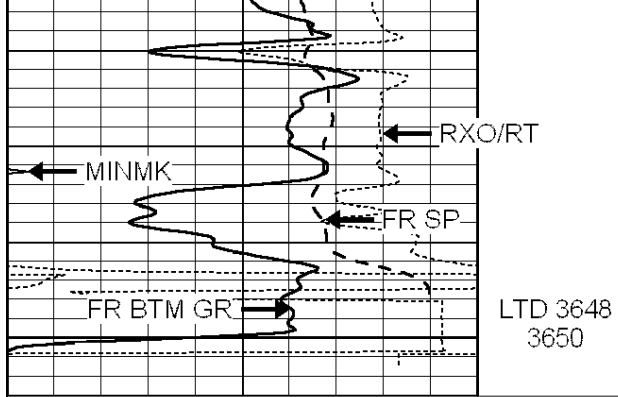
3450

3500

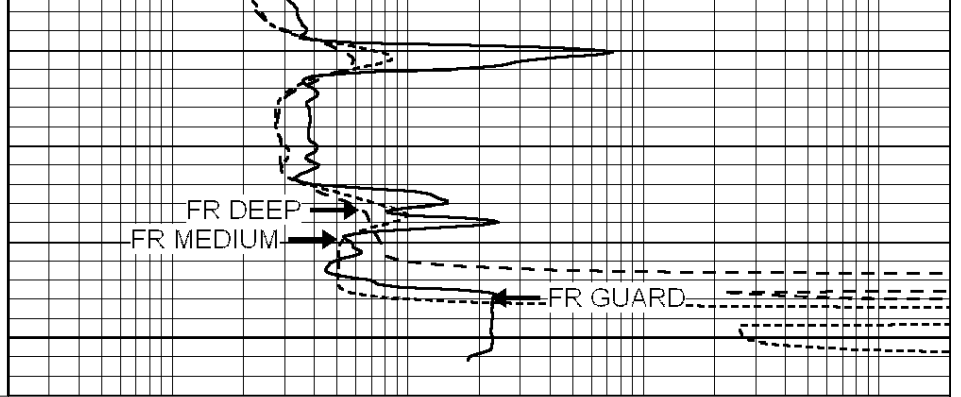
3550

3600





0	GAMMA RAY (GAPI)	150
-100	SP (mV)	100
-250	Rxo/Rt	50
0	MINMK	20



0.2	SHALLOW GUARD (Ohm-m)	2000
0.2	DEEP INDUCTION (Ohm-m)	2000
0.2	MEDIUM INDUCTION (Ohm-m)	2000

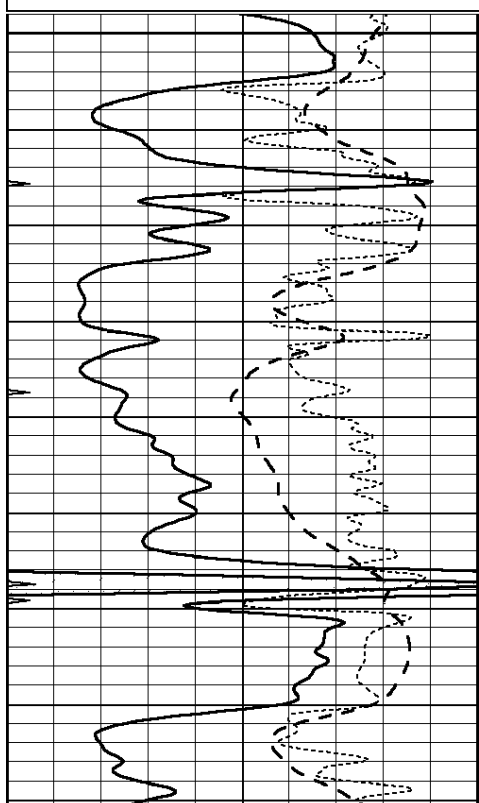


REPEAT SECTION

Database File: 26329ddn.db
 Dataset Pathname: pass2.3
 Presentation Format: _dil
 Dataset Creation: Tue Dec 16 16:28:04 2014 by Calc SOC 120430
 Charted by: Depth in Feet scaled 1:240

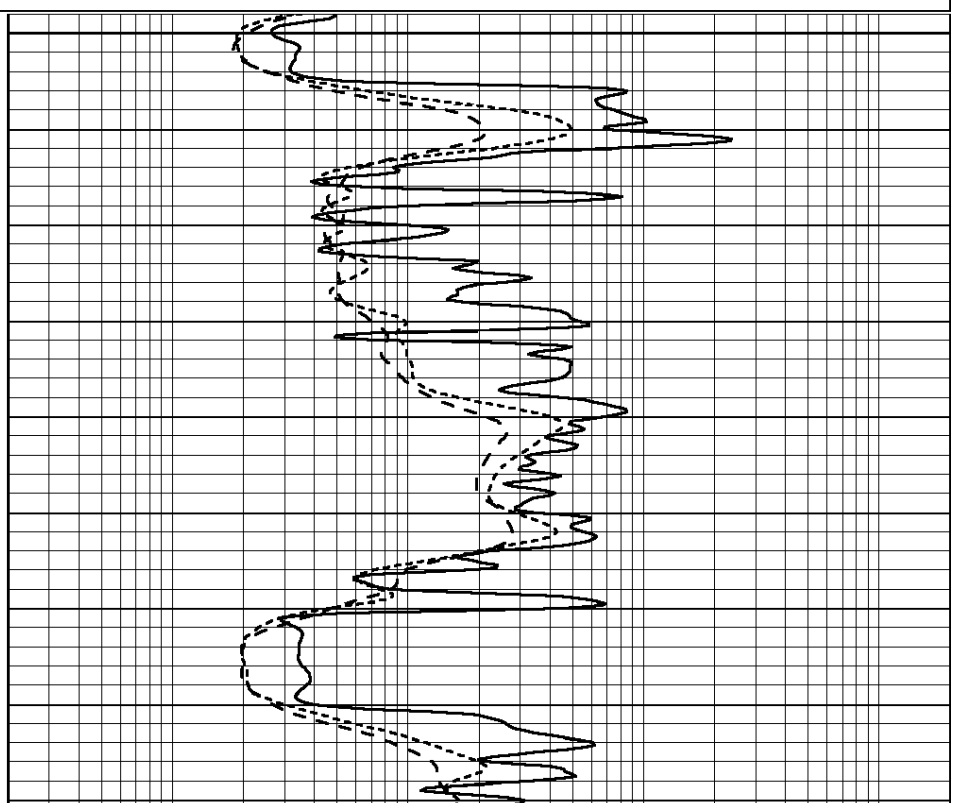
0	GAMMA RAY (GAPI)	150
-100	SP (mV)	100
-250	Rxo/Rt	50
0	MINMK	20

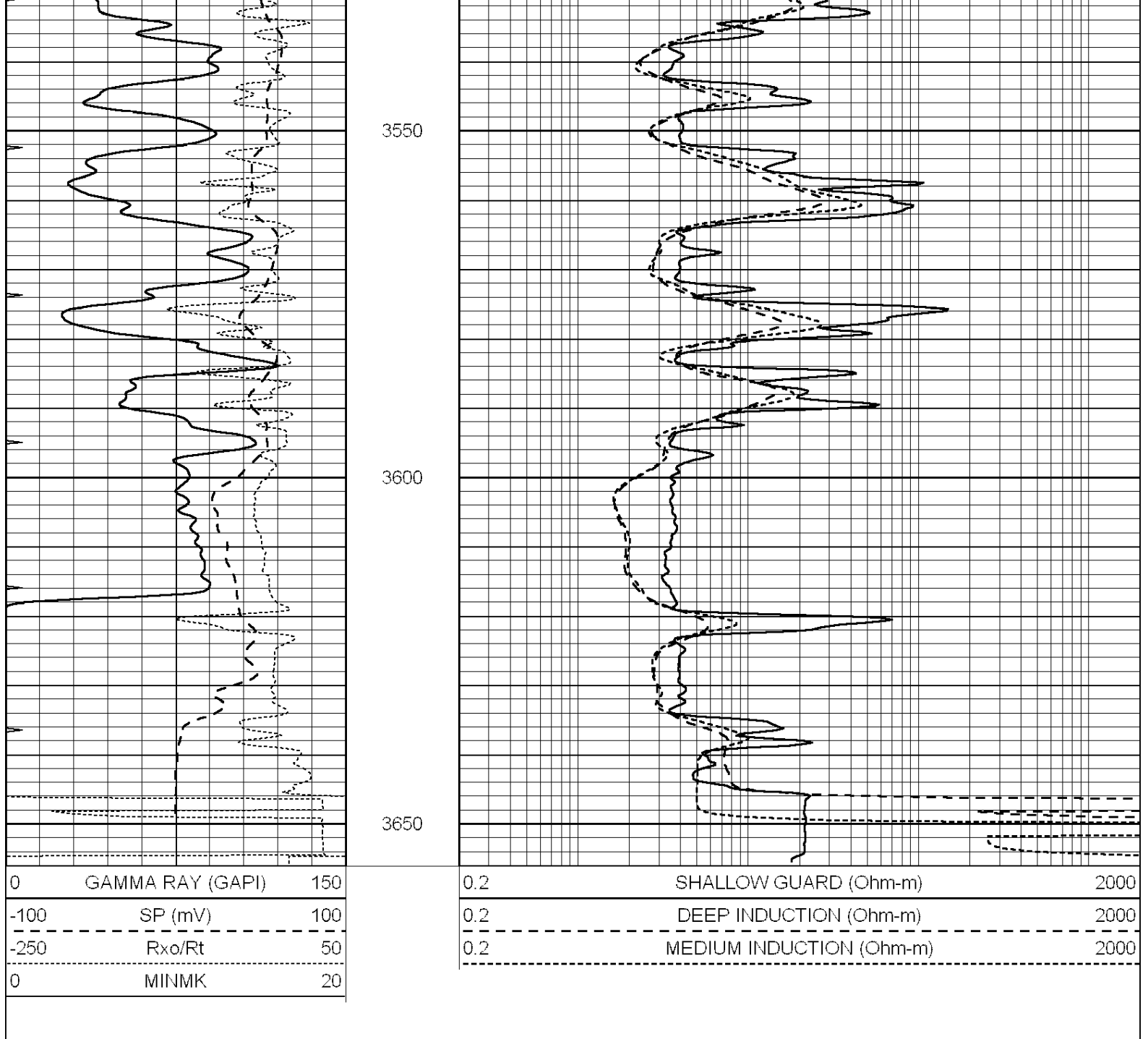
0.2	SHALLOW GUARD (Ohm-m)	2000
0.2	DEEP INDUCTION (Ohm-m)	2000
0.2	MEDIUM INDUCTION (Ohm-m)	2000



3450

3500





Calibration Report

Database File: 26329ddn.db
 Dataset Pathname: pass3.4
 Dataset Creation: Tue Dec 16 17:46:03 2014

Dual Induction Calibration Report

Serial-Model: PROBE9-DILG
 Surface Cal Performed: Sat Dec 06 09:31:12 2014
 Downhole Cal Performed: Mon Jul 28 12:02:56 2008
 After Survey Verification Performed: Mon Jul 28 12:02:56 2008

Surface Calibration

Loop:	Readings			References			Results	
	Air	Loop	V	Air	Loop	mmho/m	m	b
Deep	-0.014	0.629	V	0.000	400.000	mmho/m	670.000	-22.000
Medium	0.039	0.728	V	0.000	464.000	mmho/m	670.000	-35.000

Internal:	Zero	Cal		Zero	Cal		m	b
Deep	0.011	0.610	V	0.000	400.000	mmho/m	667.135	-7.256
Medium	0.005	0.712	V	0.000	464.000	mmho/m	655.677	-3.102

Downhole Calibration								
	Readings			References			Results	
	Zero	Cal		Zero	Cal		m'	b'
Deep	0.000	0.000	mmho/m	14.508	388.384	mmho/m	1.000	0.000
Medium	0.000	0.000	mmho/m	166.367	504.400	mmho/m	1.000	0.000
LL3		7.500	V		1400.000	Ohm-m		
		0.000	V		20.000	Ohm-m		
		-7.200	V		4000.000	mmho-m		

After Survey Verification								
	Readings			Targets			Results	
	Zero	Cal		Zero	Cal		m'	b'
Deep	0.000	0.000	mmho/m	0.000	0.000	mmho/m	0.000	0.000
Medium	0.000	0.000	mmho/m	0.000	0.000	mmho/m	0.000	0.000
LL3		1.000	Ohm-m		1.000	Ohm-m		
		0.000	Ohm-m		0.000	Ohm-m		
		1.000	mmho-m		1.000	mmho-m		

Litho Density Calibration Report
Serial: 004N Model: PRB

Master Calibration					Performed Fri May 30 11:01:00 2014			
	Background	Magnesium	Aluminum	Sandstone				
Window 1	1378.8	10804.6	3492.0	12453.4				cps
Window 2	1262.4	9313.5	3076.7	10594.7				cps
Window 3	1077.6	5668.7	2076.0	6314.8				cps
Window 4	306.4	313.0	306.4	315.6				cps
Long Space	0.0	8051.0	1814.3	9332.3				cps
Short Space	1.9	1706.1	1146.0	1707.6				cps
Rho		1.7100	2.5900	1.3800				g/cc
Pe		0.0000	2.5700	1.5500				
Rib Angle	: 45.0	Rib Slope	: 1.002	Density/Spine Ratio			: 0.571	
Spine Angle	: 75.0	Spine Slope	: 3.745	Spine Intercept			: -18.9	

Before Survey Verification					Performed Wed Dec 31 18:00:00 1969			
Window 1	0.0	0.0	0.0	0.0				cps
Window 2	0.0	0.0	0.0	0.0				cps
Window 3	0.0	0.0	0.0	0.0				cps
Window 4	0.0	0.0	0.0	0.0				cps
Long Space	0.0	0.0	0.0	0.0				cps
Short Space	0.0	0.0	0.0	0.0				cps
Measured Rho		0.0000	0.0000	0.0000				g/cc
Measured Correction		0.0000	0.0000	0.0000				g/cc
Measured Pe			0.0000	0.0000				

After Survey Verification					Performed Wed Dec 31 18:00:00 1969			
Window 1	0.0	0.0	0.0	0.0				cps
Window 2	0.0	0.0	0.0	0.0				cps
Window 3	0.0	0.0	0.0	0.0				cps
Window 4	0.0	0.0	0.0	0.0				cps

Window 4	0.0	0.0	0.0	0.0	cps
Long Space	0.0	0.0	0.0	0.0	cps
Short Space	0.0	0.0	0.0	0.0	cps
Measured Rho		0.0000	0.0000	0.0000	g/cc
Measured Correction		0.0000	0.0000	0.0000	g/cc
Measured Pe			0.0000	0.0000	

Compensated Neutron Calibration Report

Serial Number: 070808
Tool Model: Probe

PRE-SURVEY VERIFICATION

Detector	Readings	Measured	Target
Short Space	cps		
Long Space	cps	pu	pu

POST-SURVEY VERIFICATION

Detector	Readings	Measured	Target
Short Space	cps		
Long Space	cps	pu	pu

Gamma Ray Calibration Report

Serial Number: 070558
Tool Model: OPEN_GR
Performed: Mon Nov 17 10:01:40 2014

Calibrator Value: 1.0 GAPI

Background Reading: 0.0 cps
Calibrator Reading: 1.0 cps

Sensitivity: 0.2800 GAPI/cps