



Pioneer Energy Services

Dual Compensated Porosity Log

API No.	15-007-24251-00-00		
Company	Indian Oil Company, Inc.		
Well	Brad SWD #1		
Field	Hardtner		
County	Barber		State
Location	660' FSL & 1980' FEL		
Sec: 6	Twp: 35S	Rge: 12W	
Elevation	DIL		

Permanent Datum	Ground Level	Elevation 1409
Log Measured From	Kelly Bushing	11 Ft. Above Perm. Datum
Drilling Measured From	Kelly Bushing	
Date	11/7/2014	

Run Number	One	Date	11/7/2014
Type Log	CNL / CDL		
Depth Driller	6425		
Depth Logger	6422		
Bottom Logged Interval	6401		
Top Logged Interval	4200		
Type Fluid In Hole	Chemical		
Salinity, PPM CL	4000		
Density	9.4		
Level	Full		
Max. Rec. Temp. F	142		
Operating Rig Time	3 Hours		
Equipment -- Location	91	Hays	
Recorded By	D. Schmidt		
Witnessed By	Scott Alberg		

Borehole Record				Casing Record			
Run No	Bit	From	To	Size	Wgt.	From	To
One	12.25	00	259	8.625	23#	00	259
Two	7.875	259	TD				

<<< Fold Here >>>

All interpretations are opinions based on inferences from electrical or other measurements and we cannot and do not guarantee the accuracy or correctness of any interpretation, and we shall not, except in the case of gross or willful negligence on our part, be liable or responsible for any loss, costs, damages, or expenses incurred or sustained by anyone resulting from any interpretation made by any of our officers, agents or employees. These interpretations are also subject to our general terms and conditions set out in our current Price Schedule.

Comments

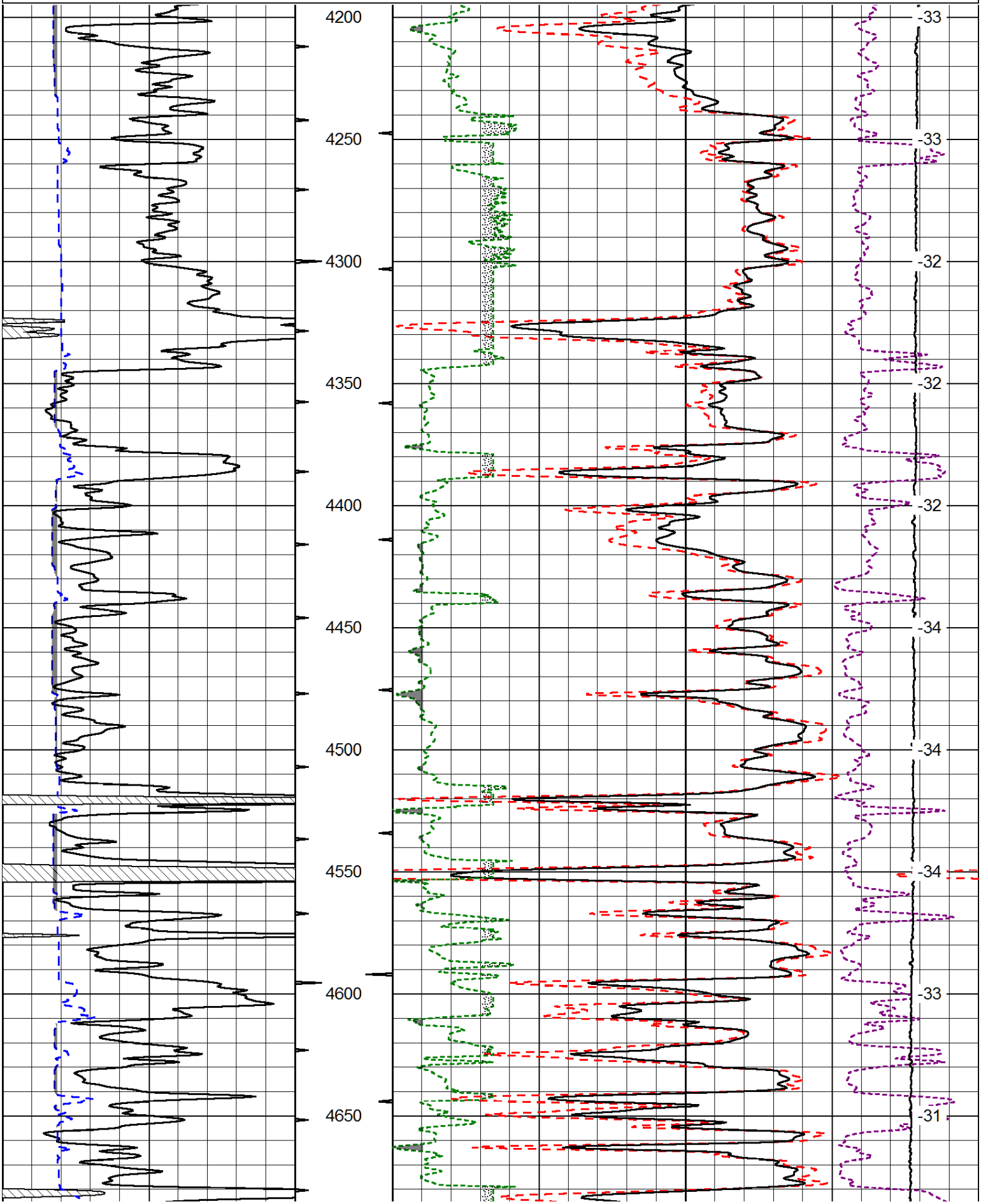
Thank you for using Log-Tech, Inc.
(785) 625-3858

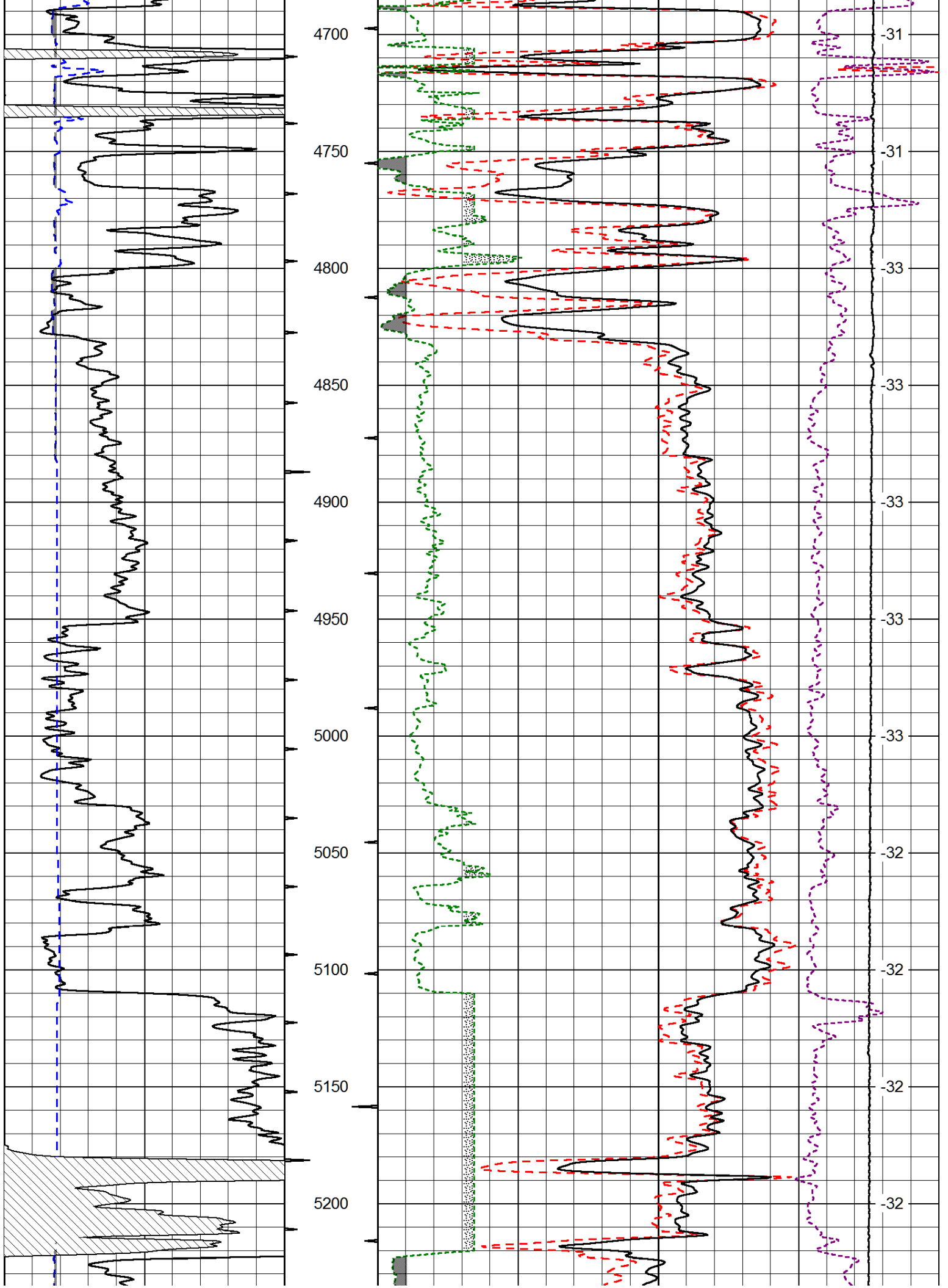
Hardtner,
1/2 West,
North and West Into

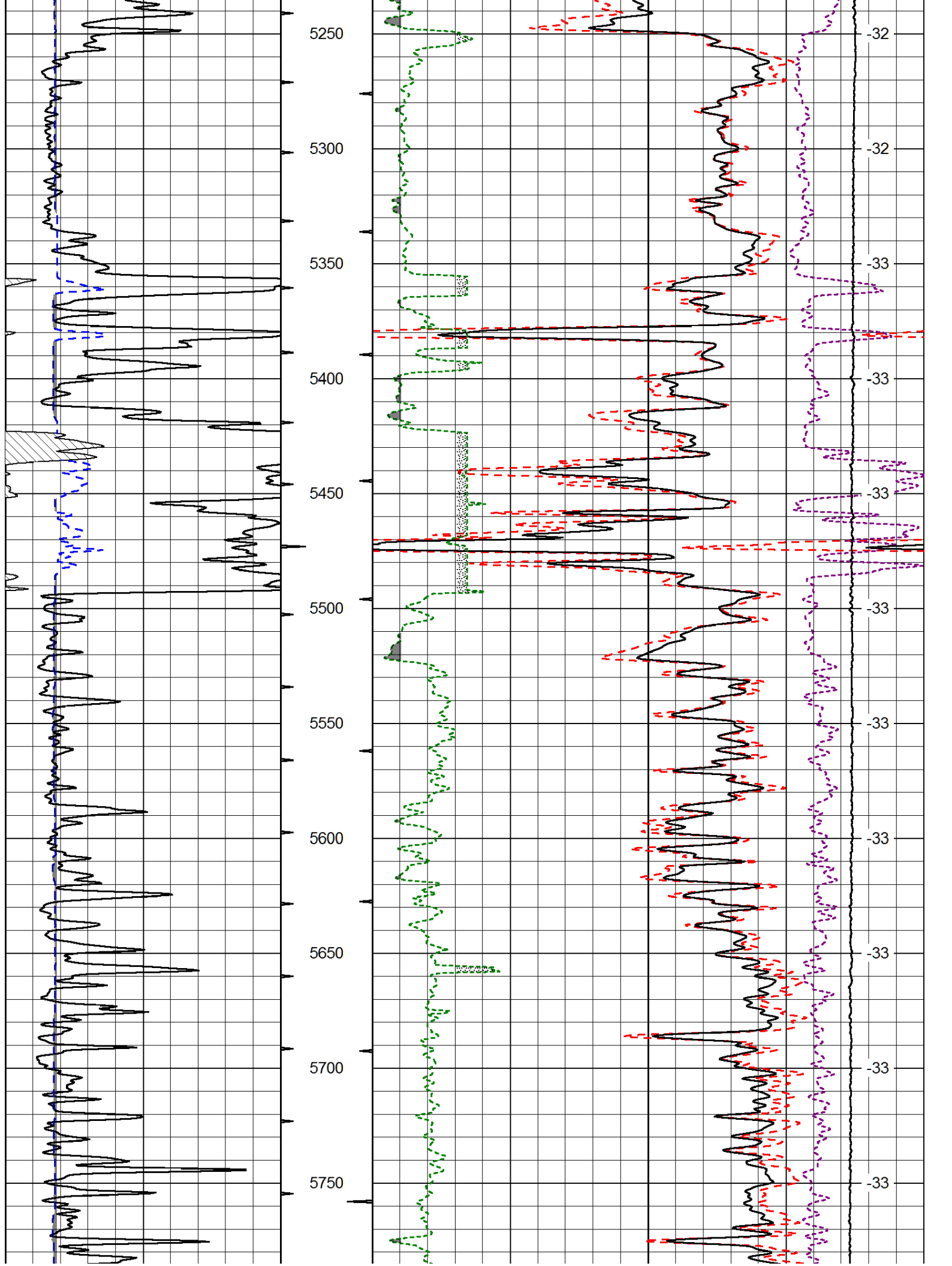
Database File: indian_brad_1hd.db
 Dataset Pathname: dil/instack
 Presentation Format: cdl
 Dataset Creation: Fri Nov 07 10:41:29 2014
 Charted by: Depth in Feet scaled 1:600

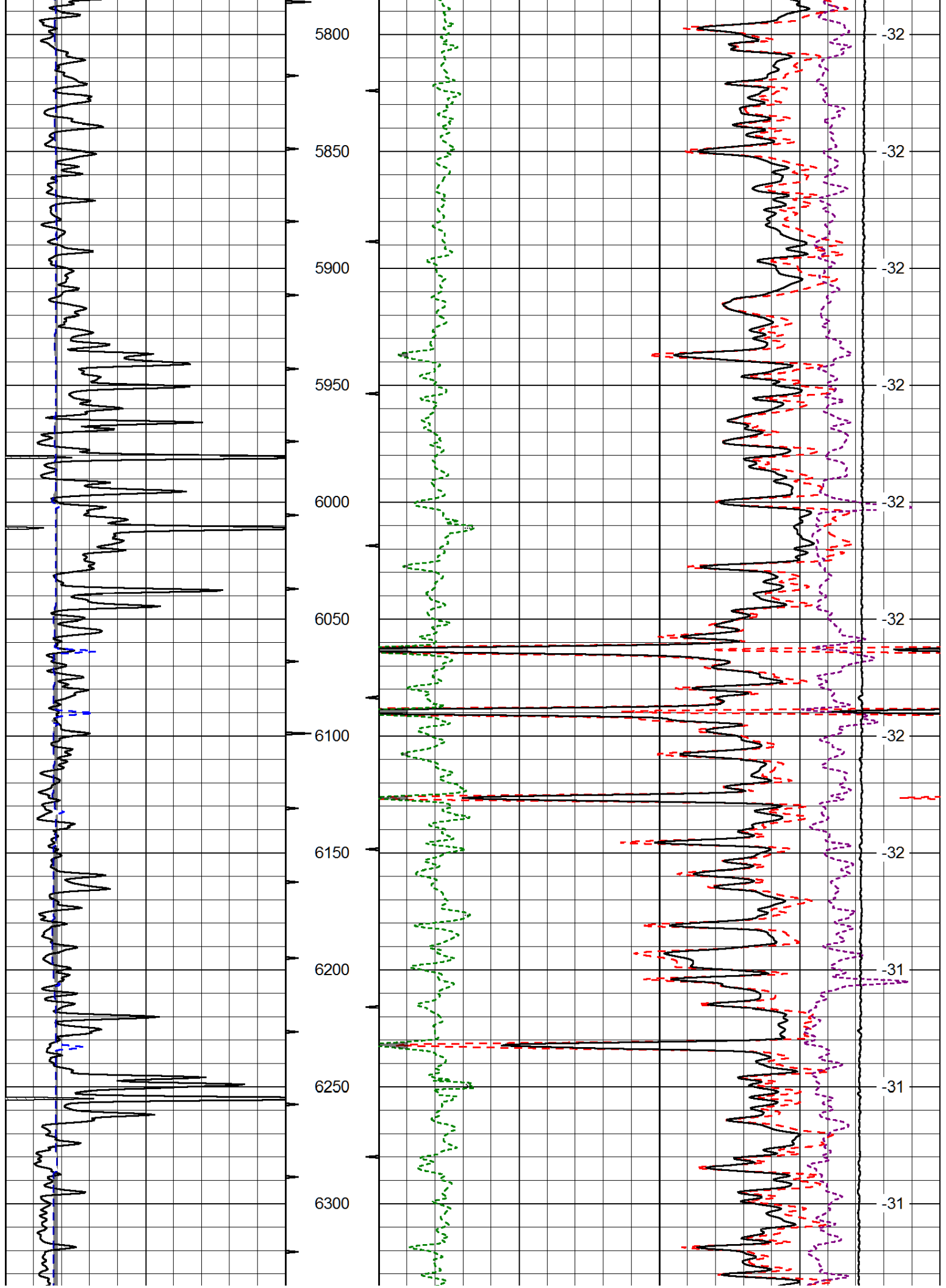
0	Gamma Ray	150
6	Caliper (GAPI)	16

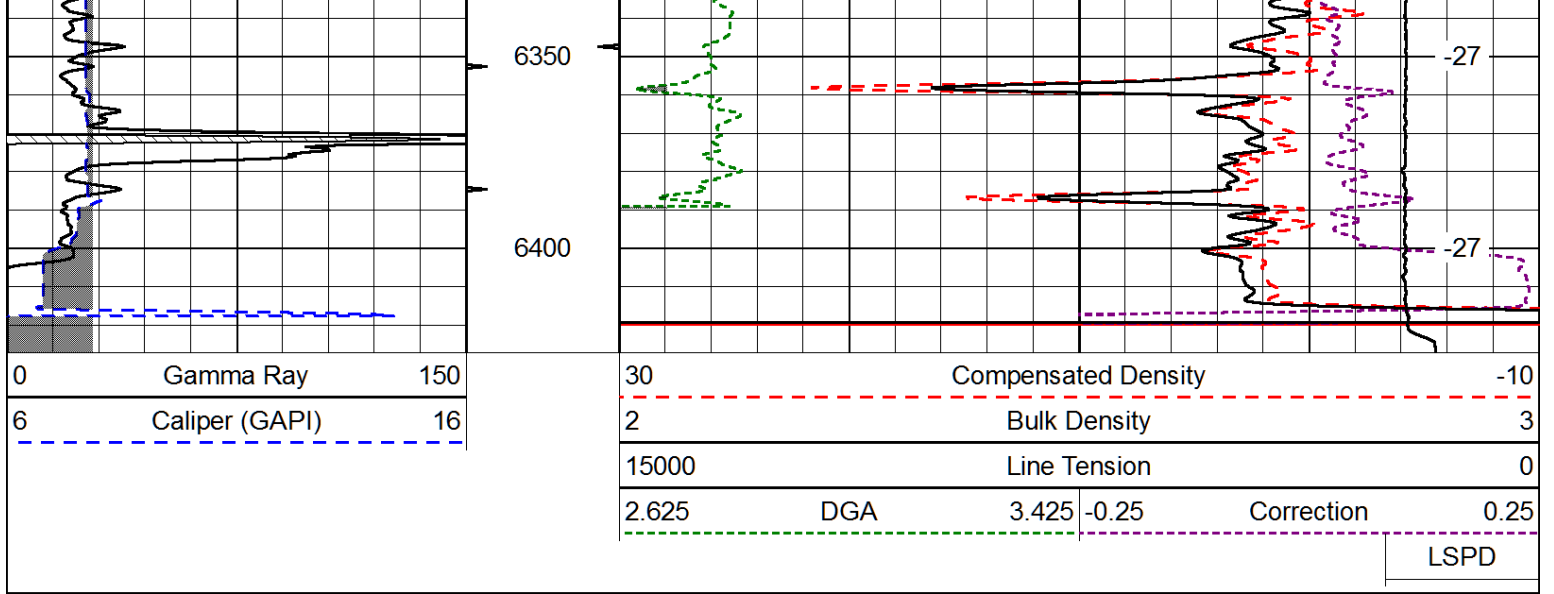
30	Compensated Density		-10
2	Bulk Density		3
15000	Line Tension		0
2.625	DGA	3.425	-0.25
Correction			0.25
LSPD			











Database File: indian_brad_1hd.db
 Dataset Pathname: dil/instack
 Presentation Format: cndlspec
 Dataset Creation: Fri Nov 07 10:41:29 2014
 Charted by: Depth in Feet scaled 1:240

