



Pioneer Energy Services

Dual Induction Log

API No.	15-007-24251-00-00	
Company	Indian Oil Company, Inc.	
Well	Brad SWD #1	
Field	Hardtner	
County	Barber	State
		Kansas
Location	660' FSL & 1980' FEL	
Sec: 6	Twp: 35S	Rge: 12W
Permanent Datum	Ground Level	Elevation 1409
Log Measured From	Kelly Bushing	11 Ft. Above Perm. Datum
Drilling Measured From	Kelly Bushing	
		K.B. 1420 D.F. 1409 G.L. 1409
Other Services	CNL/CDL	

Date	11/7/2014
Run Number	One
Depth Driller	6425
Depth Logger	6422
Bottom Logged Interval	6421
Top Log Interval	250
Casing Driller	8.625 @ 259
Casing Logger	259
Bit Size	7.875
Type Fluid in Hole	Chemical
Salinity, ppm CL	4000
Density / Viscosity	9.4 56
pH / Fluid Loss	8.5 11.2
Source of Sample	Flowline
Rm @ Meas. Temp	0.80 @ 40
Rmf @ Meas. Temp	0.60 @ 40
Rmc @ Meas. Temp	1.08 @ 40
Source of Rmf / Rmc	Charts
Rm @ BHT	0.22 @ 142
Operating Rig Time	3 Hours
Max Rec. Temp. F	142
Equipment Number	91
Location	Hays
Recorded By	D. Schmidt
Witnessed By	Scott Alberg

<<< Fold Here >>>

All interpretations are opinions based on inferences from electrical or other measurements and we cannot and do not guarantee the accuracy or correctness of any interpretation, and we shall not, except in the case of gross or willful negligence on our part, be liable or responsible for any loss, costs, damages, or expenses incurred or sustained by anyone resulting from any interpretation made by any of our officers, agents or employees. These interpretations are also subject to our general terms and conditions set out in our current Price Schedule.

Comments

Thank you for using Log-Tech, Inc.
(785) 625-3858

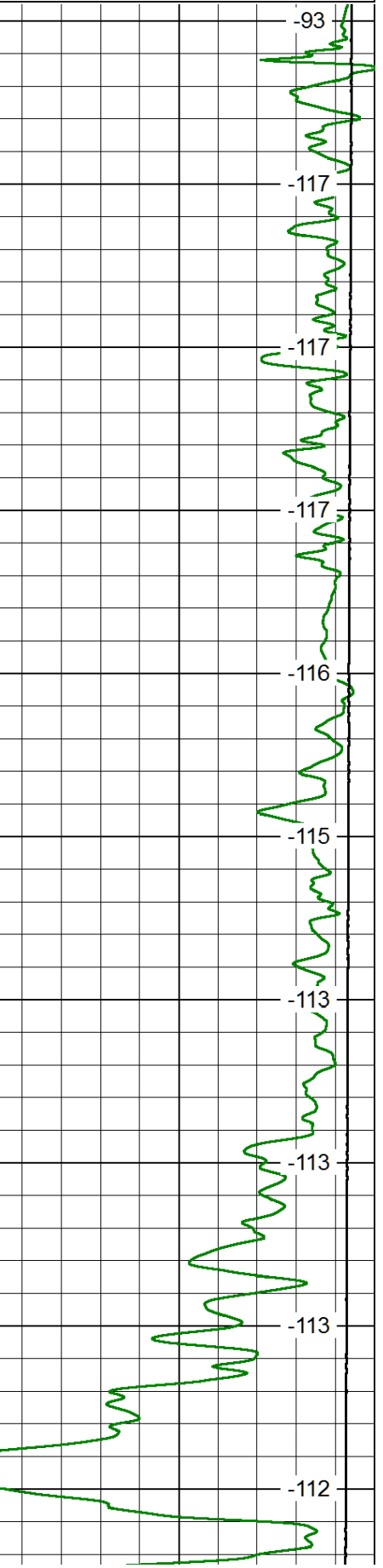
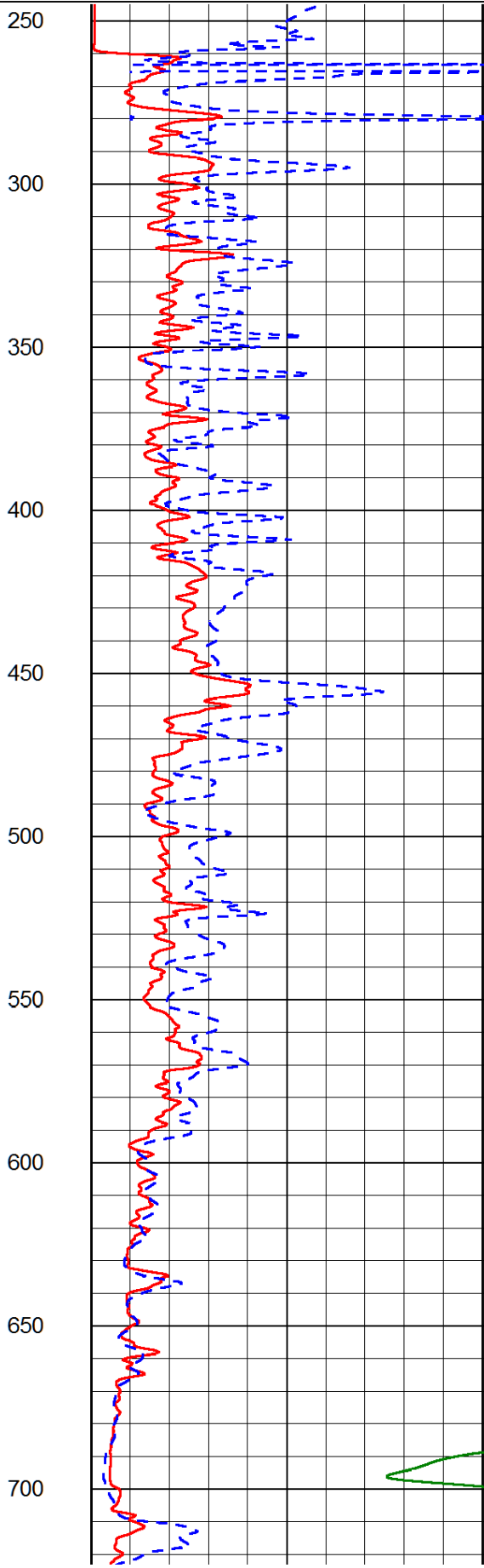
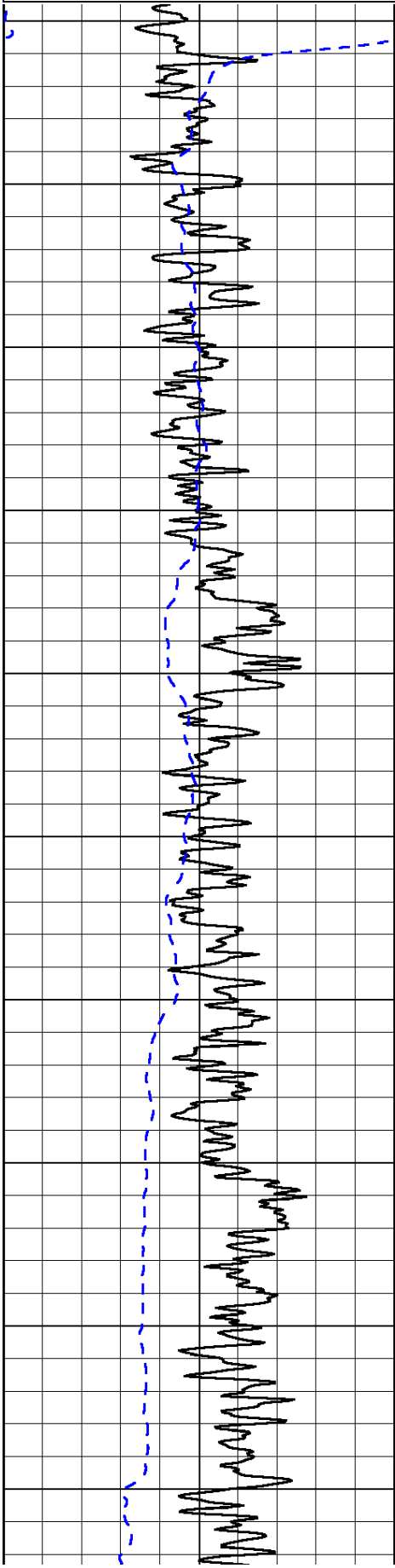
Hardtner,
1/2 West,
North and West Into

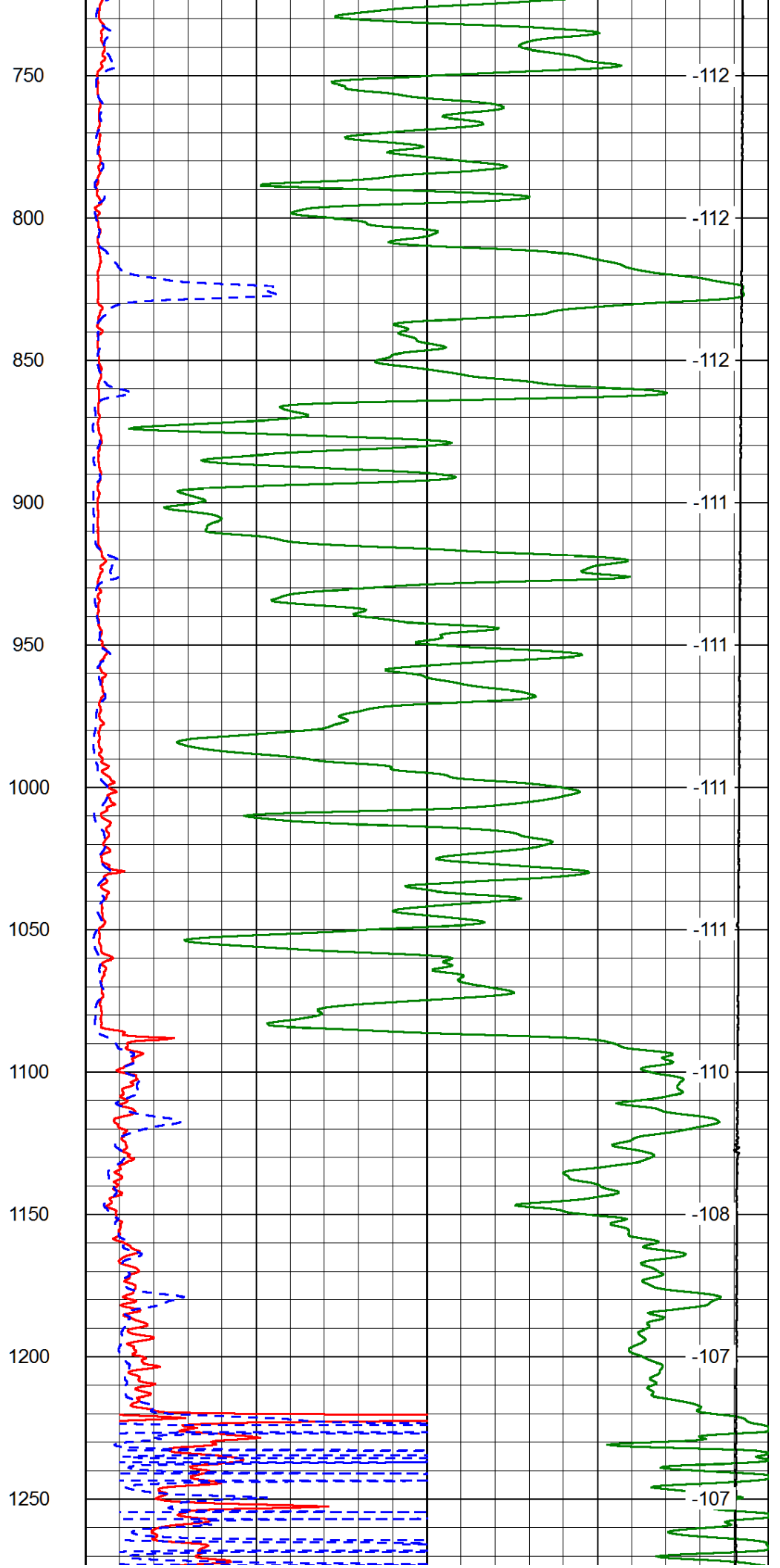
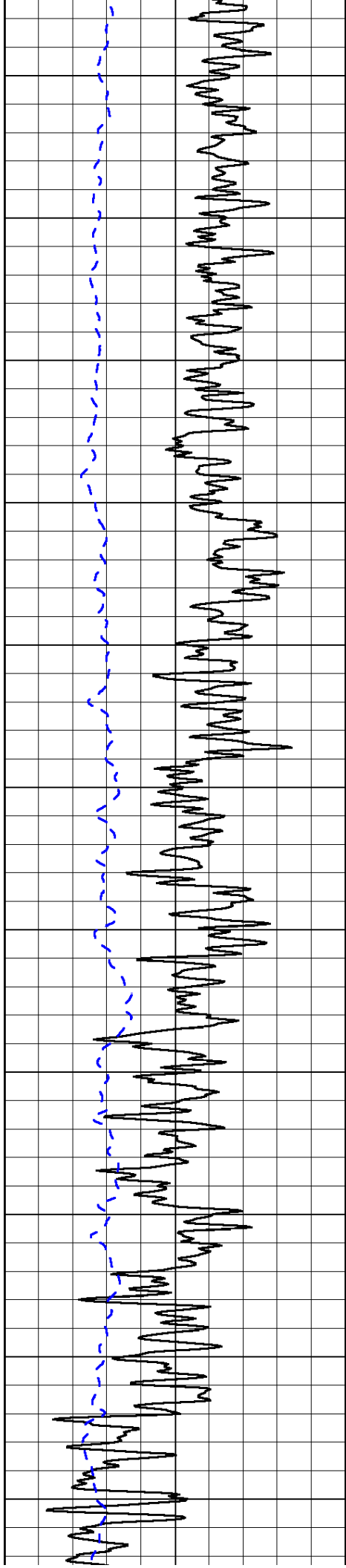
Database File: indian_brad_1hd.db
 Dataset Pathname: dil/instack
 Presentation Format: dil2in
 Dataset Creation: Fri Nov 07 10:41:29 2014
 Charted by: Depth in Feet scaled 1:600

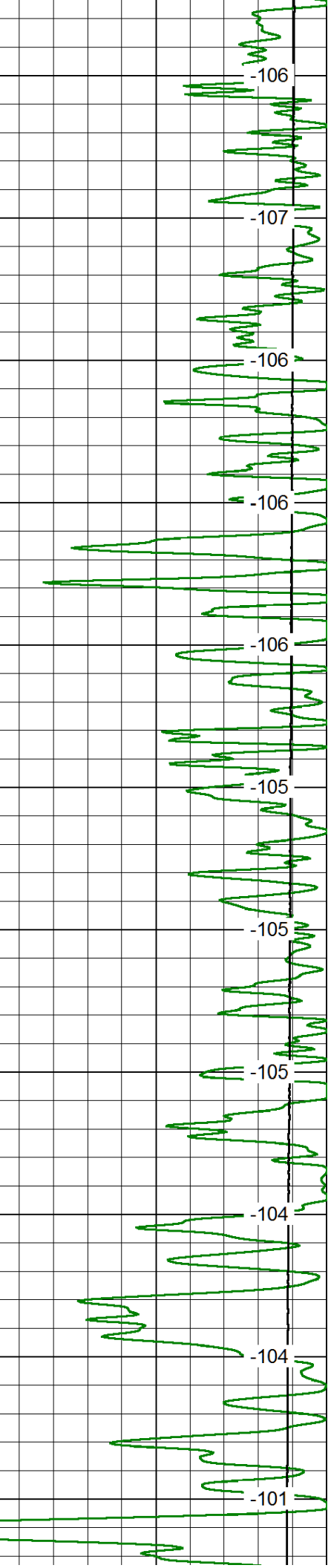
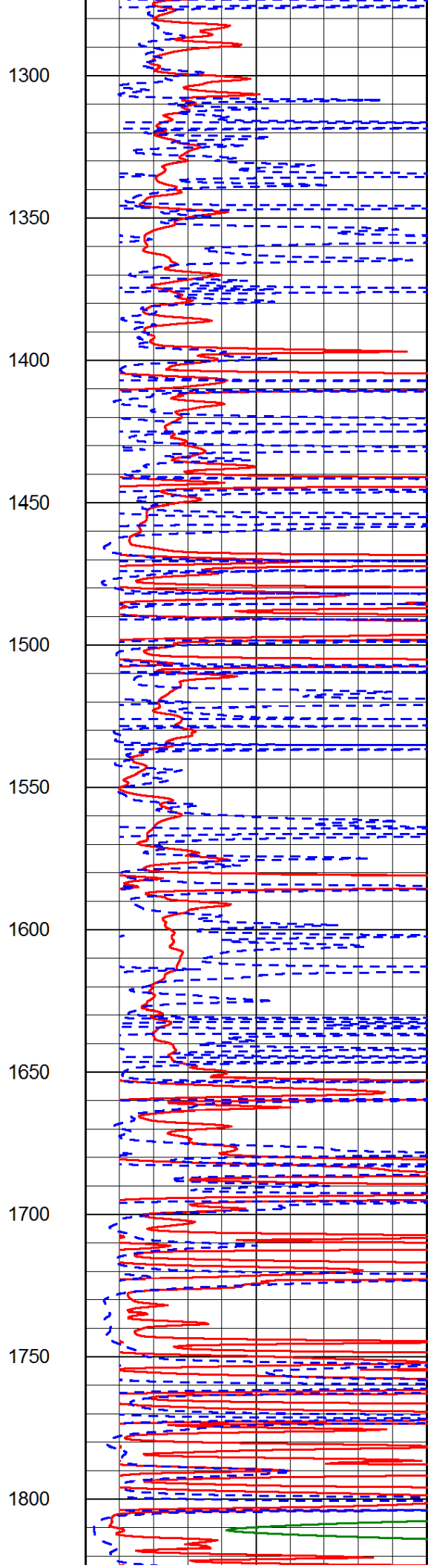
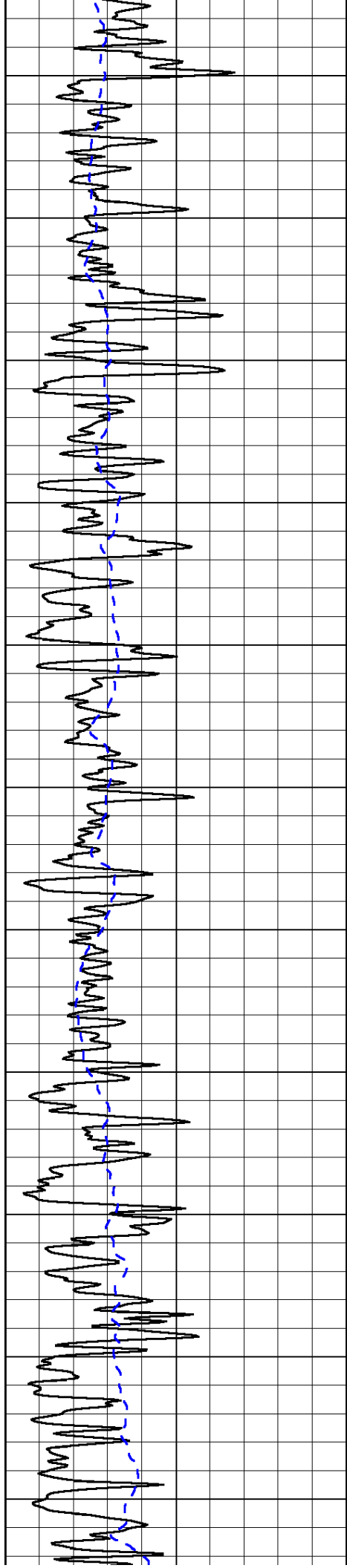
Gamma Ray 150
-200 SP (mV) 0

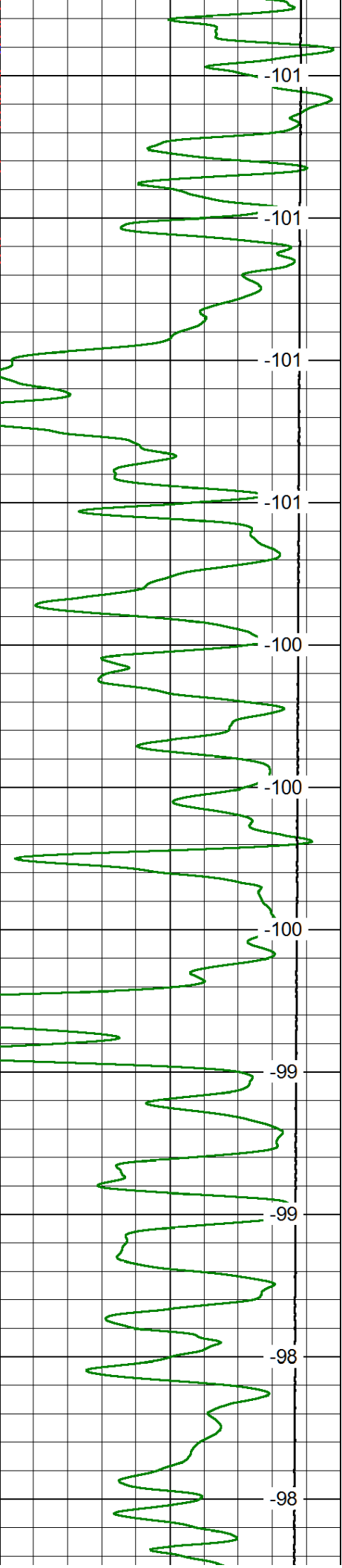
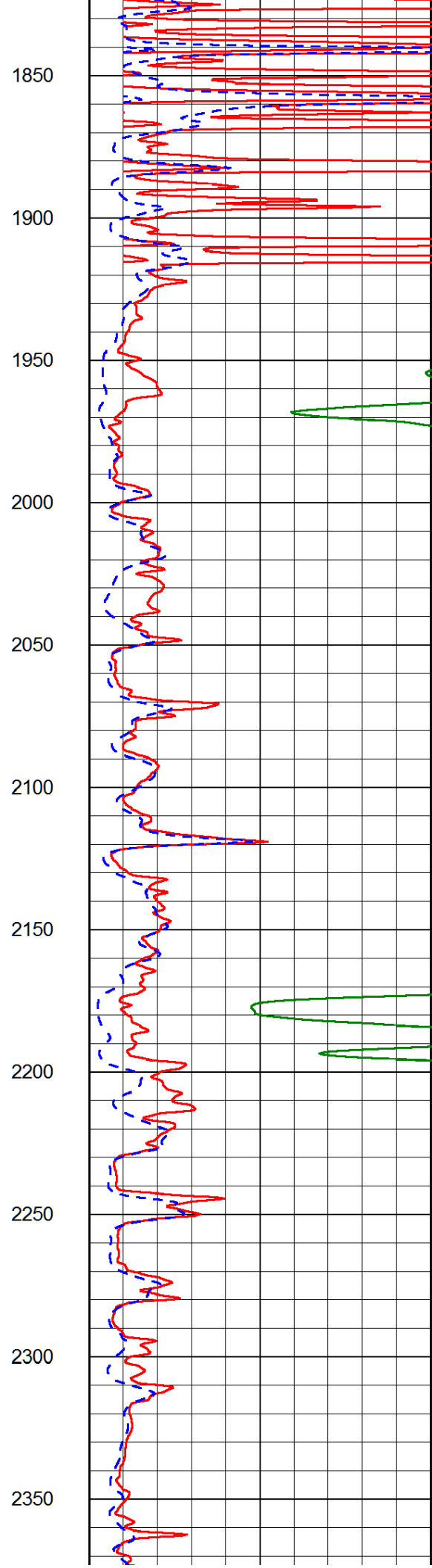
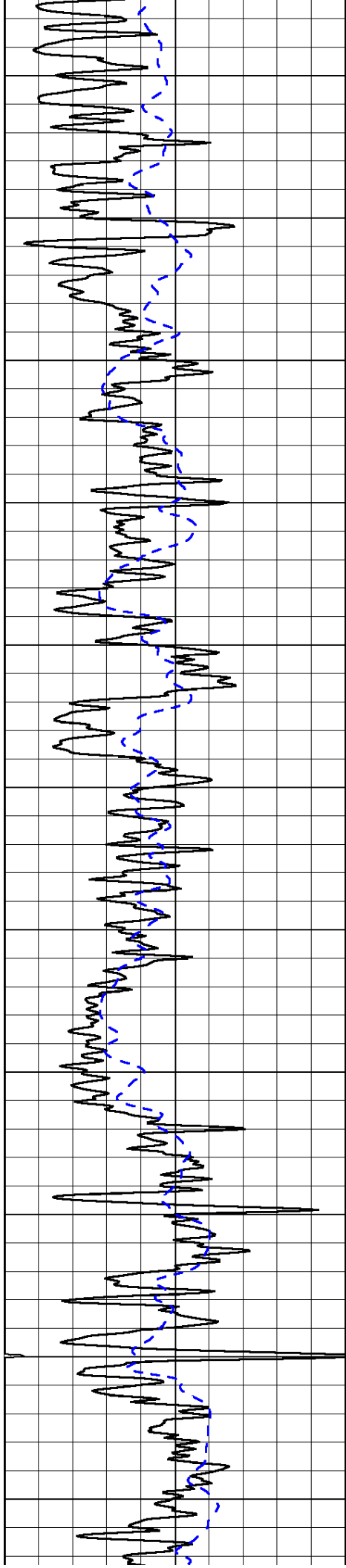
0 Shallow Resistivity 50
0 Deep Resistivity 50
1000 Conductivity 0
15000 Line Tension 0
50 Shallow Resistivity 500
50 Deep Resistivity 500

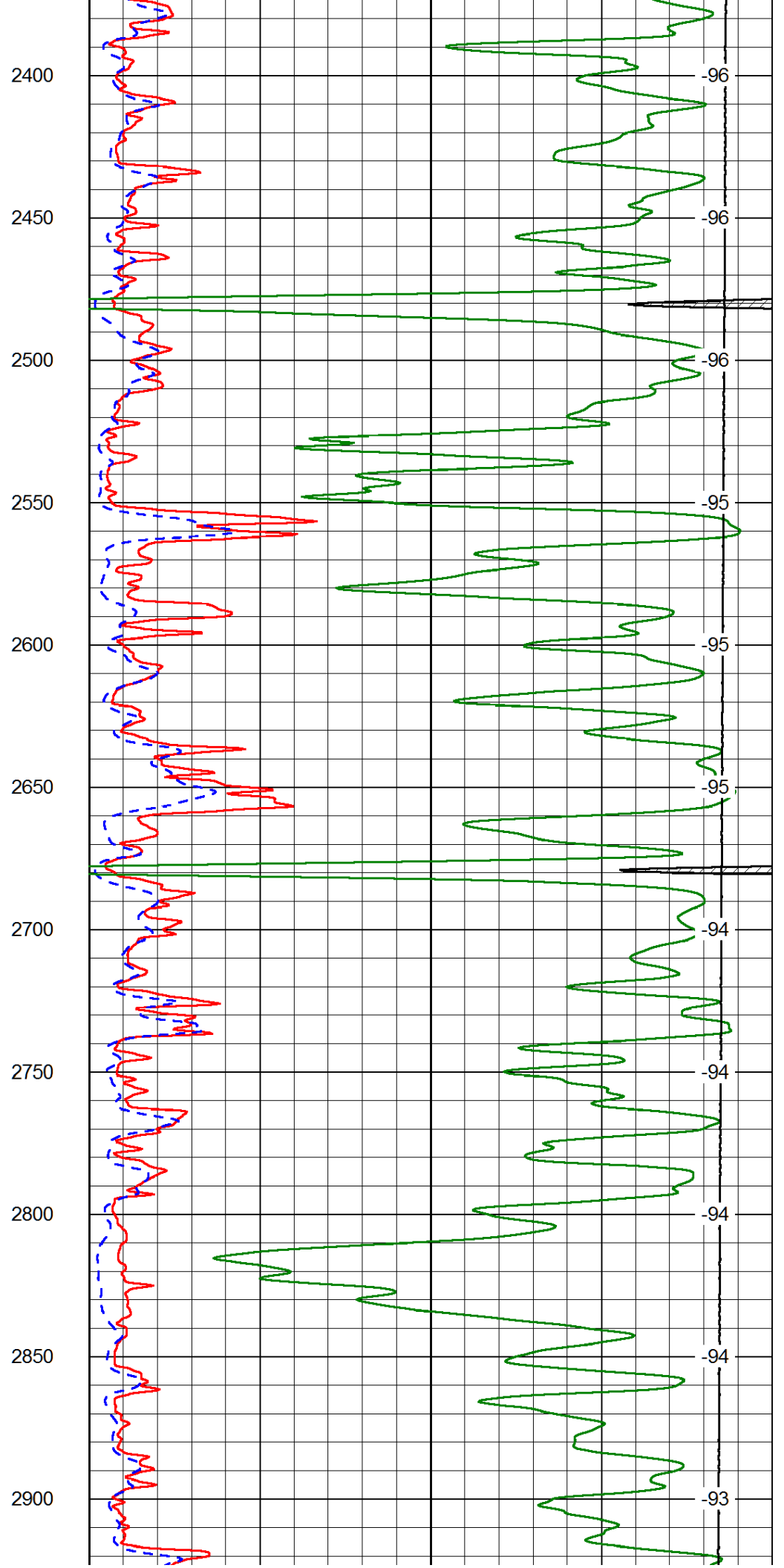
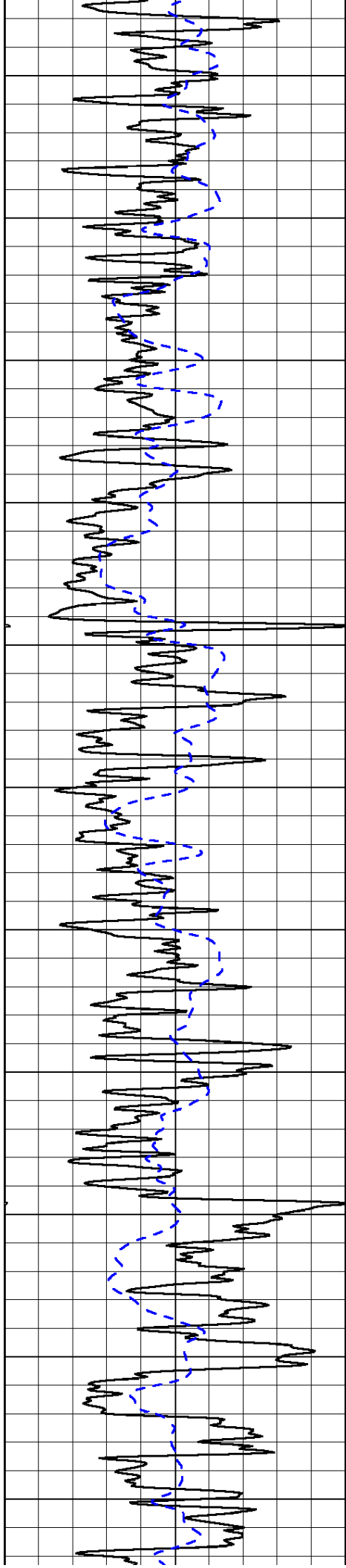
LSPD

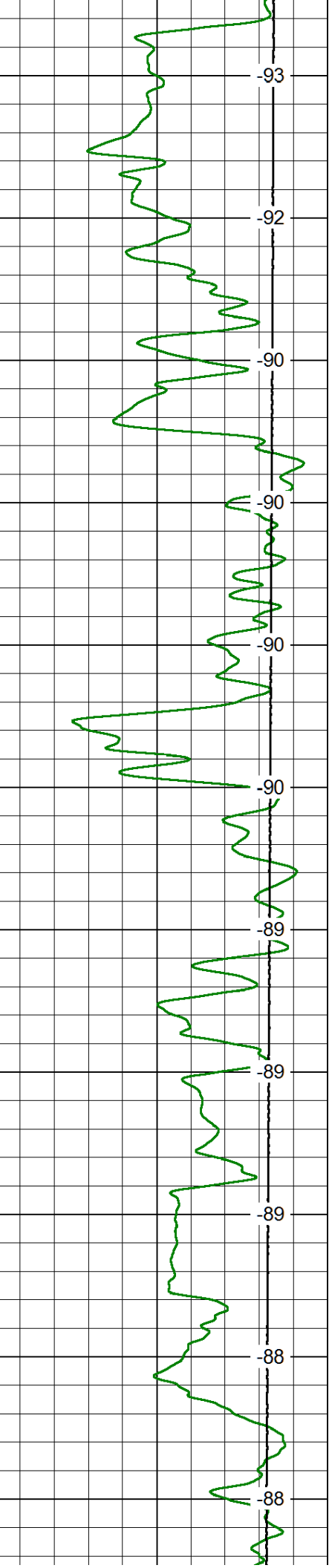
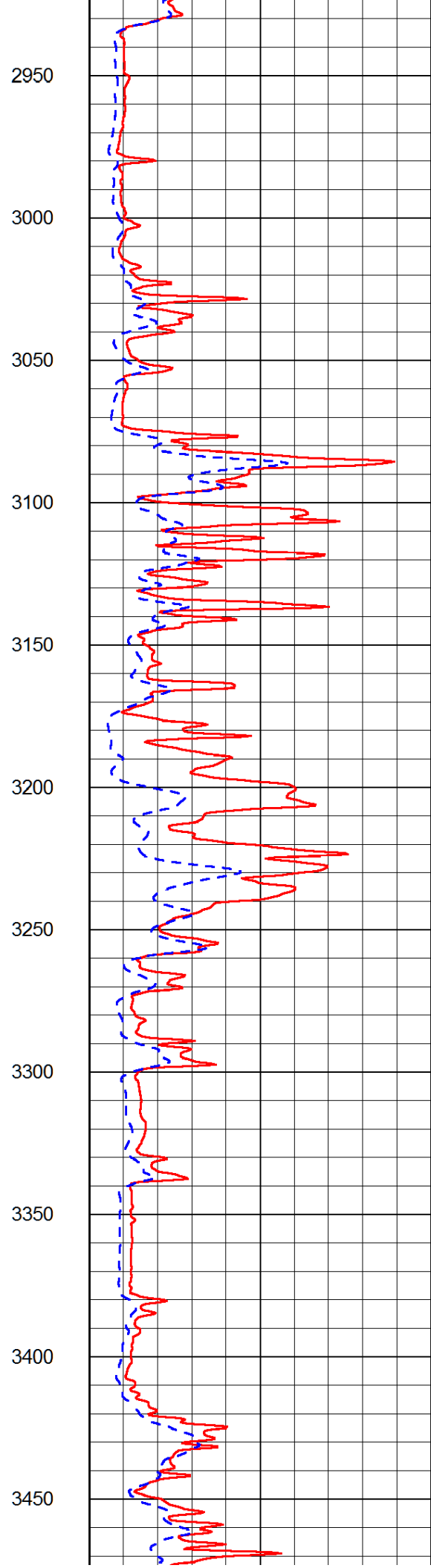
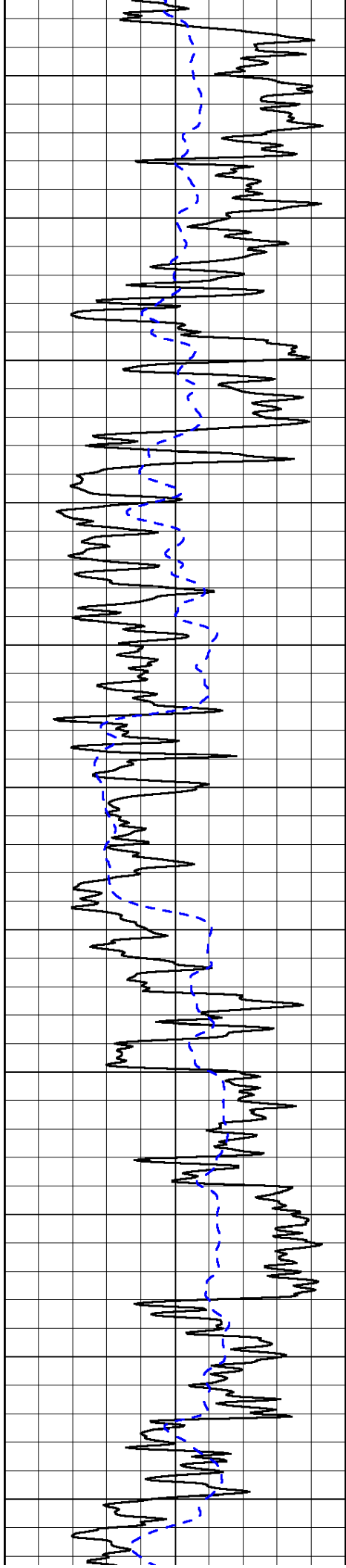


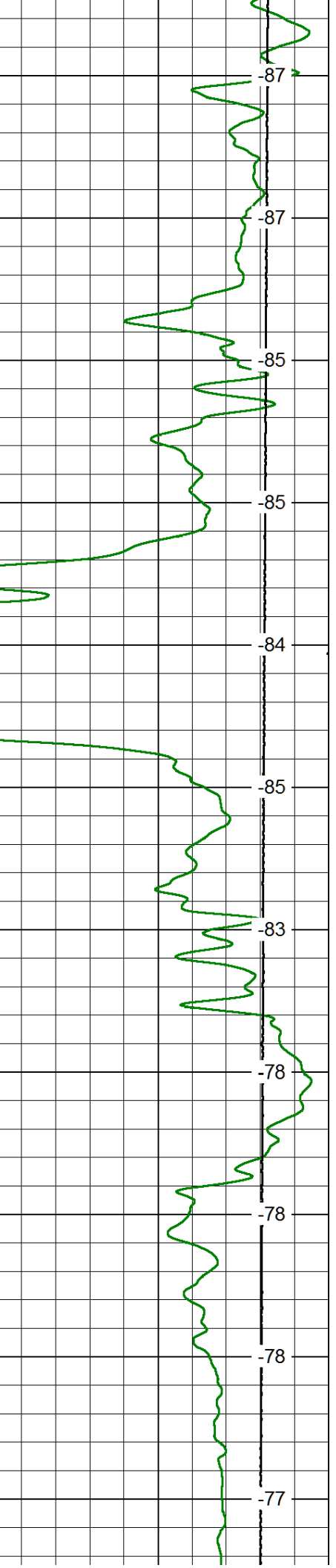
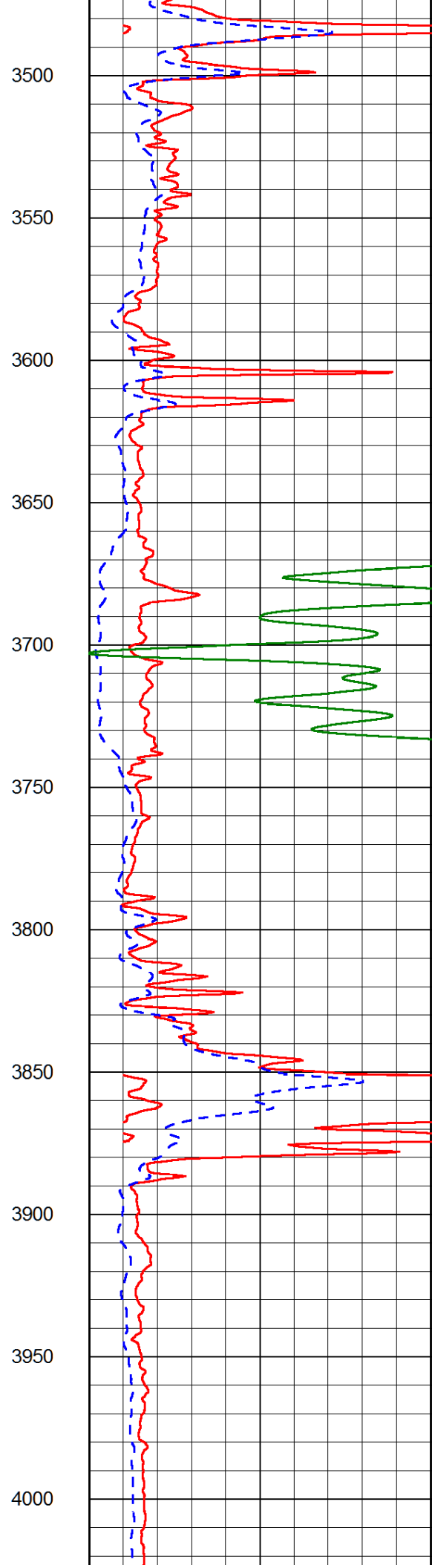
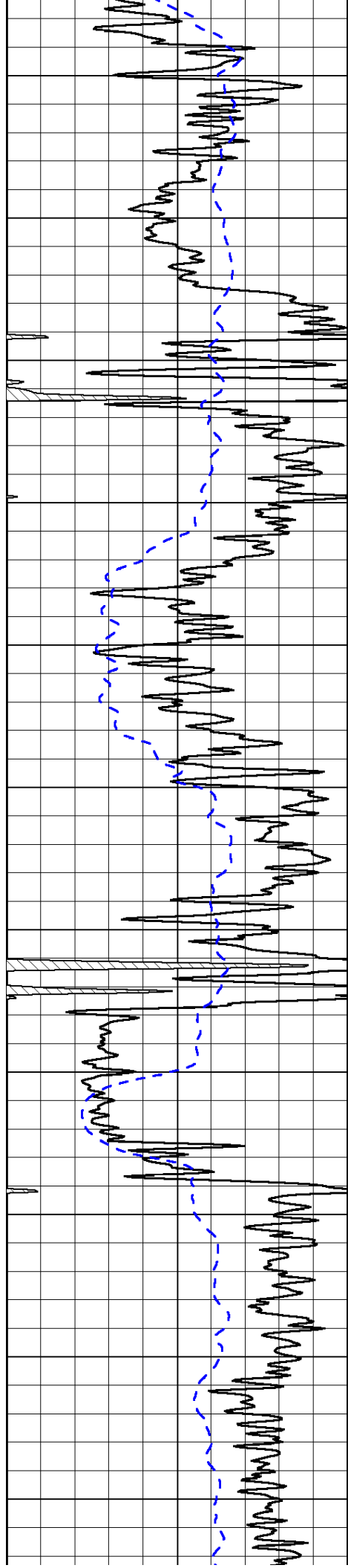


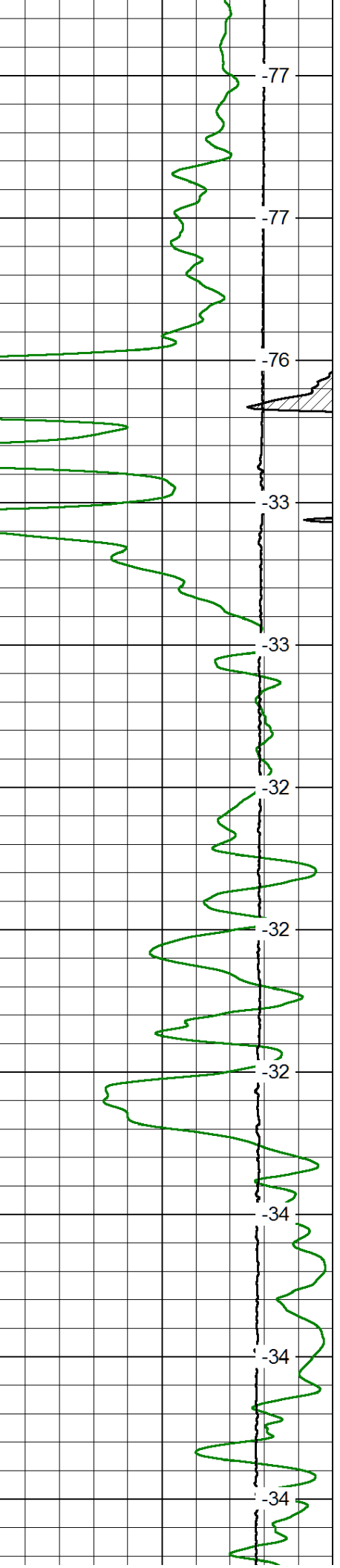
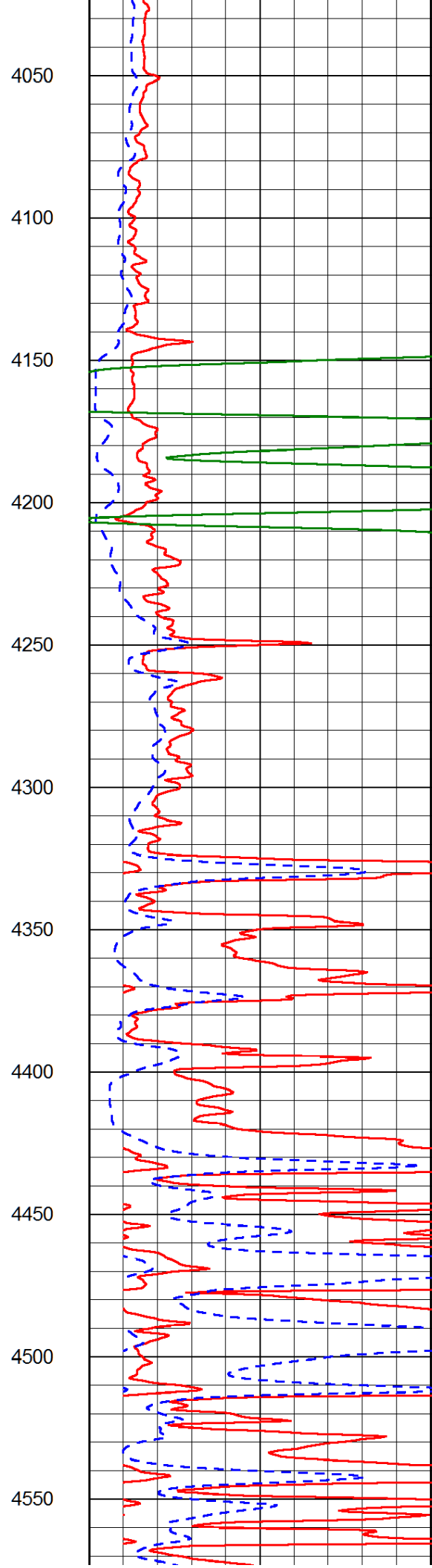
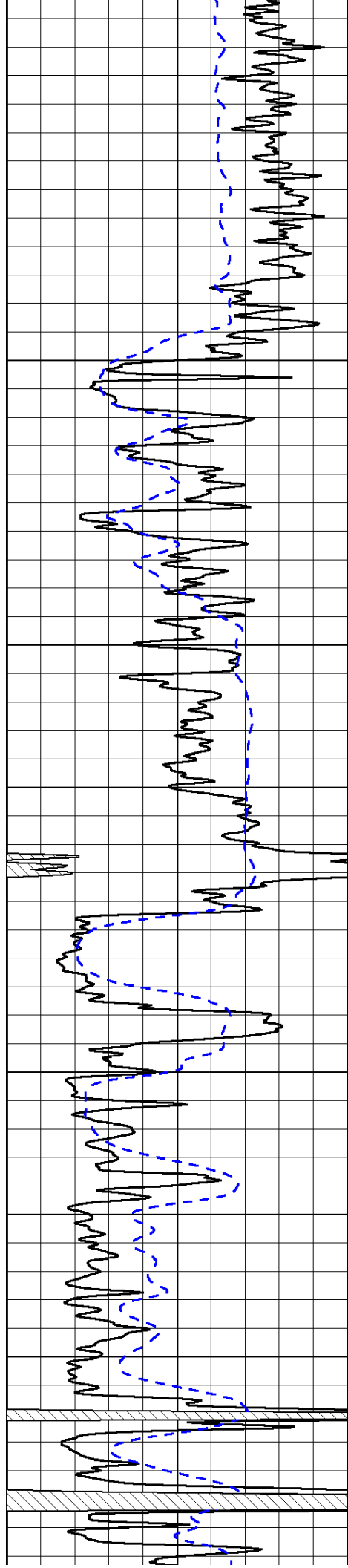


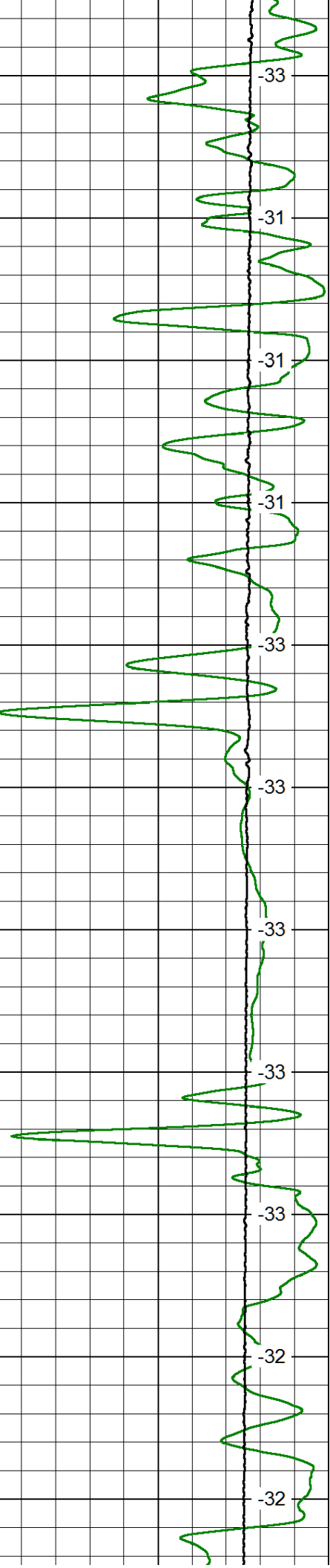
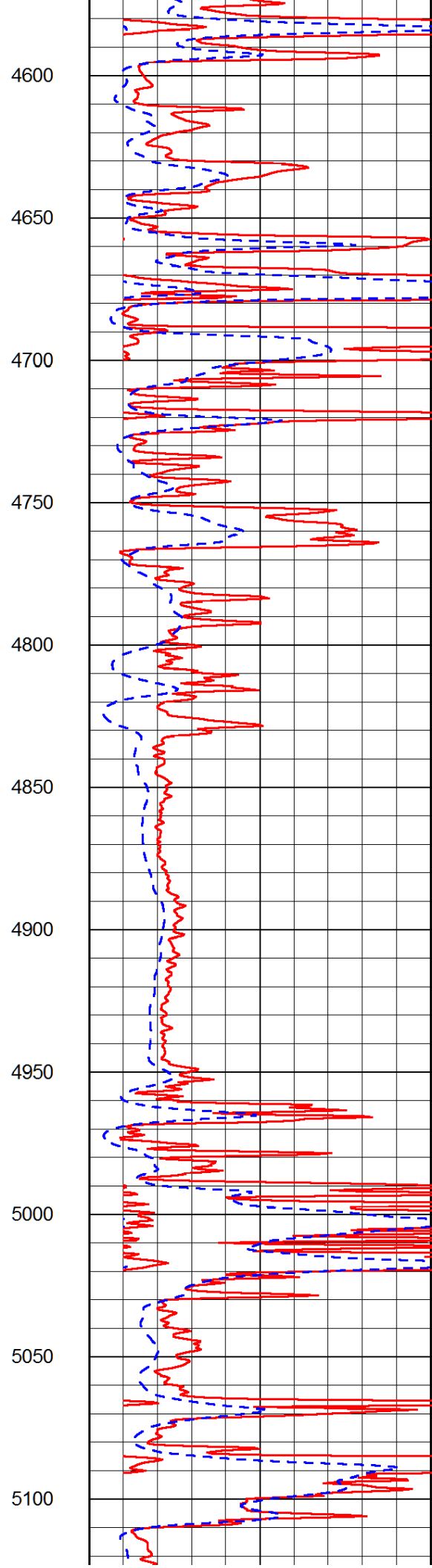
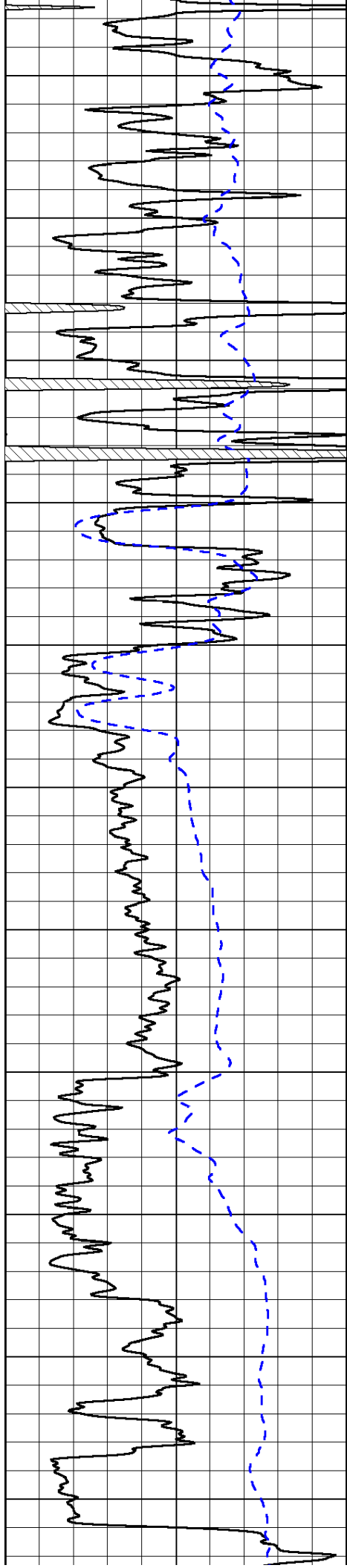


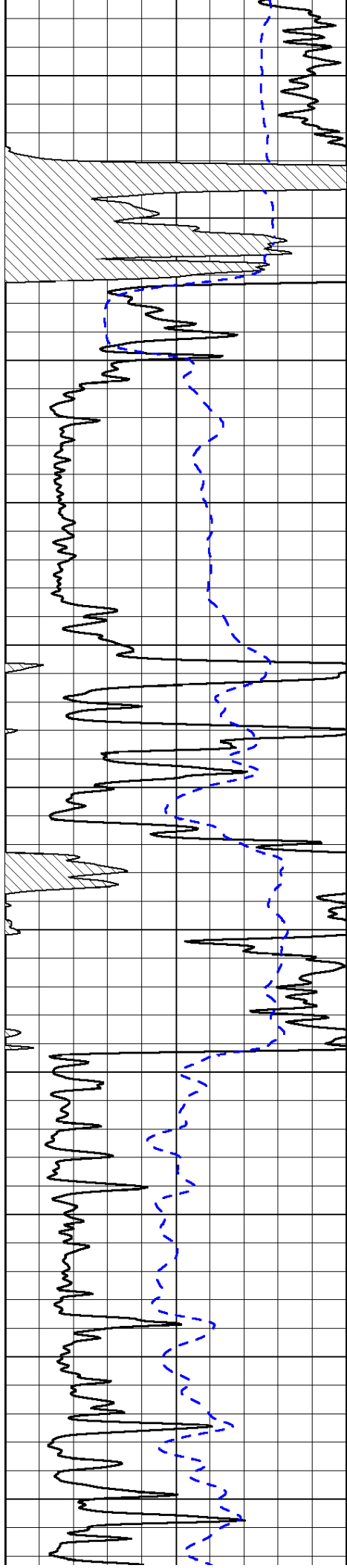












5150

5200

5250

5300

5350

5400

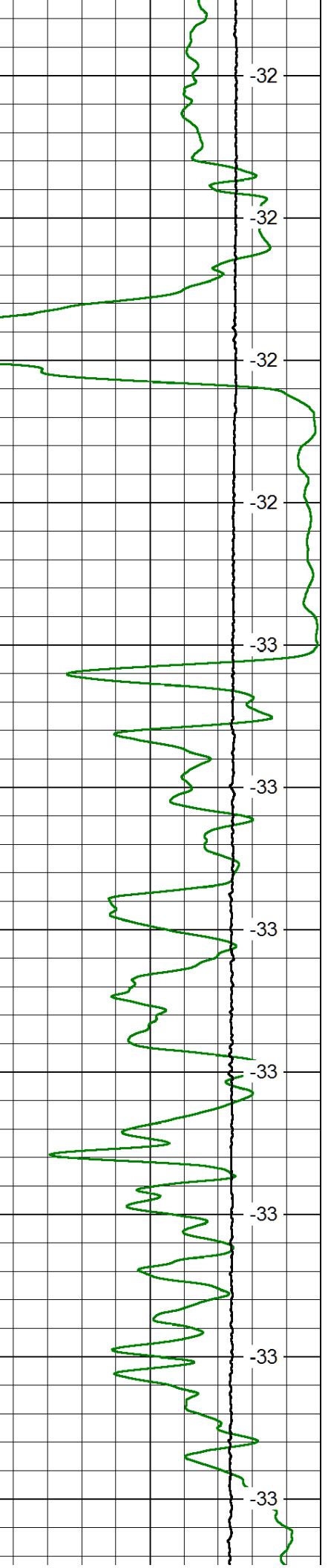
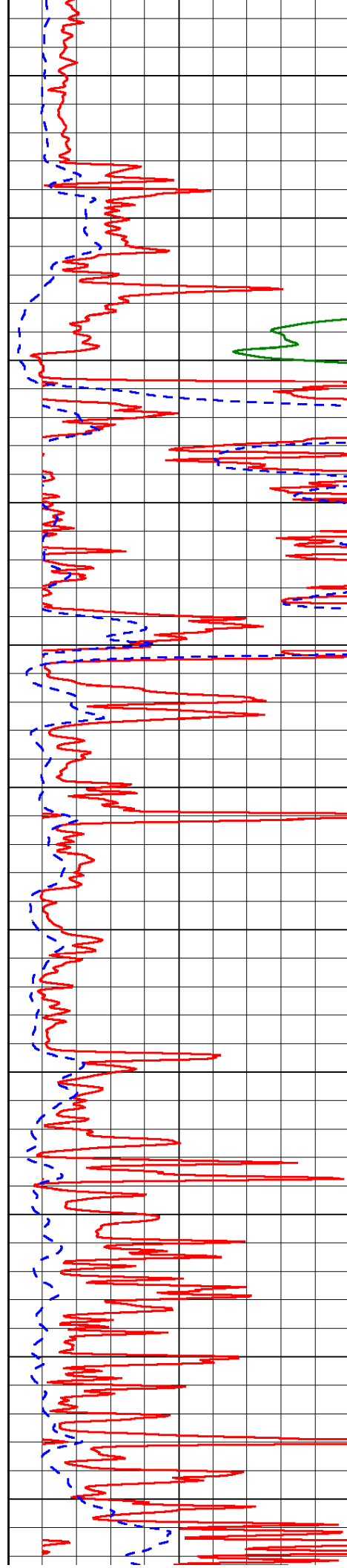
5450

5500

5550

5600

5650



-32

-32

-32

-32

-33

-33

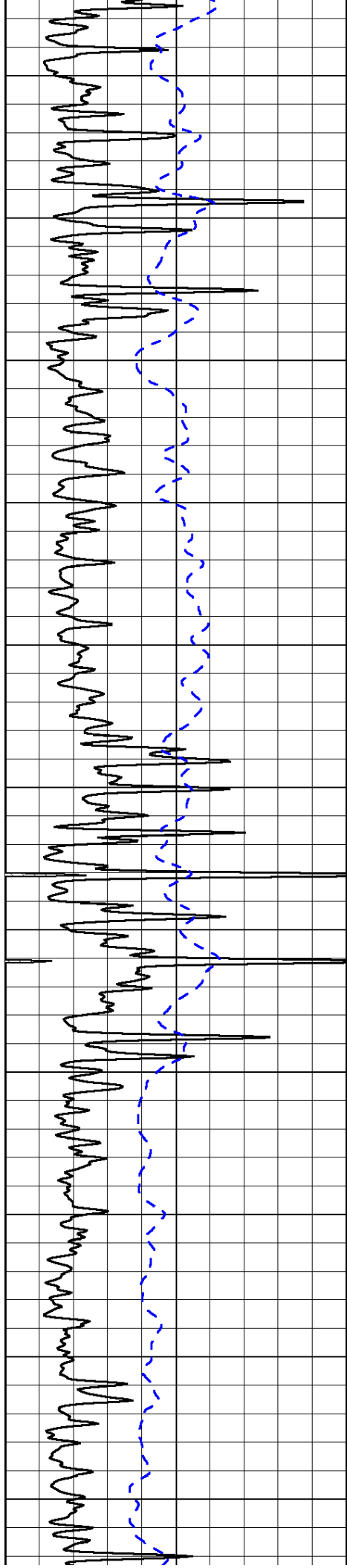
-33

-33

-33

-33

-33



5700

5750

5800

5850

5900

5950

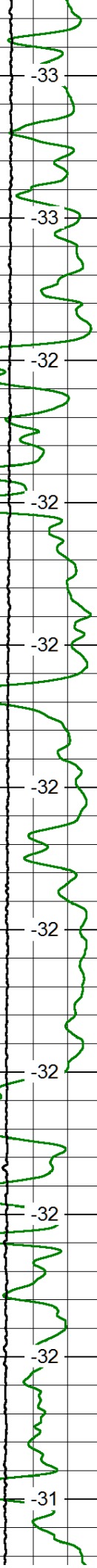
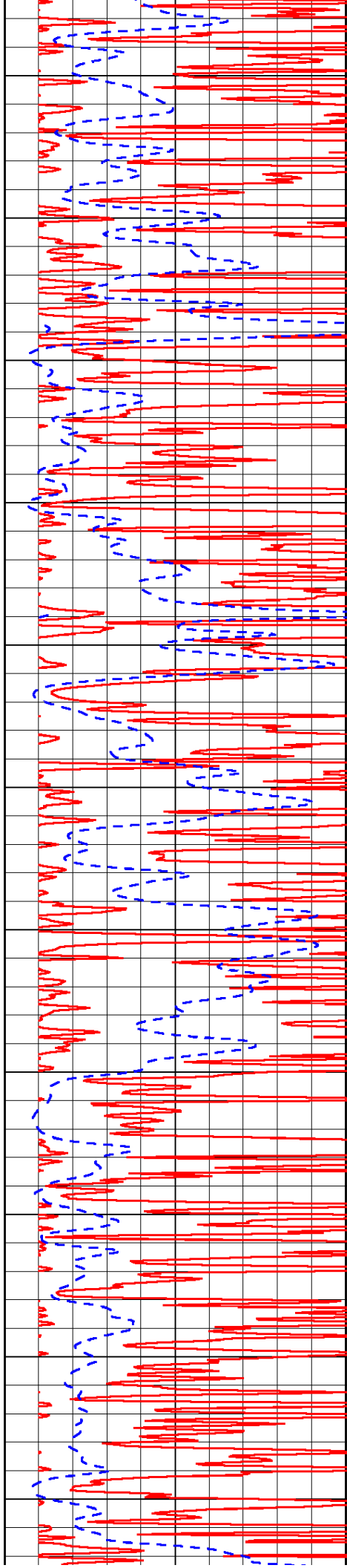
6000

6050

6100

6150

6200



-33

-33

-32

-32

-32

-32

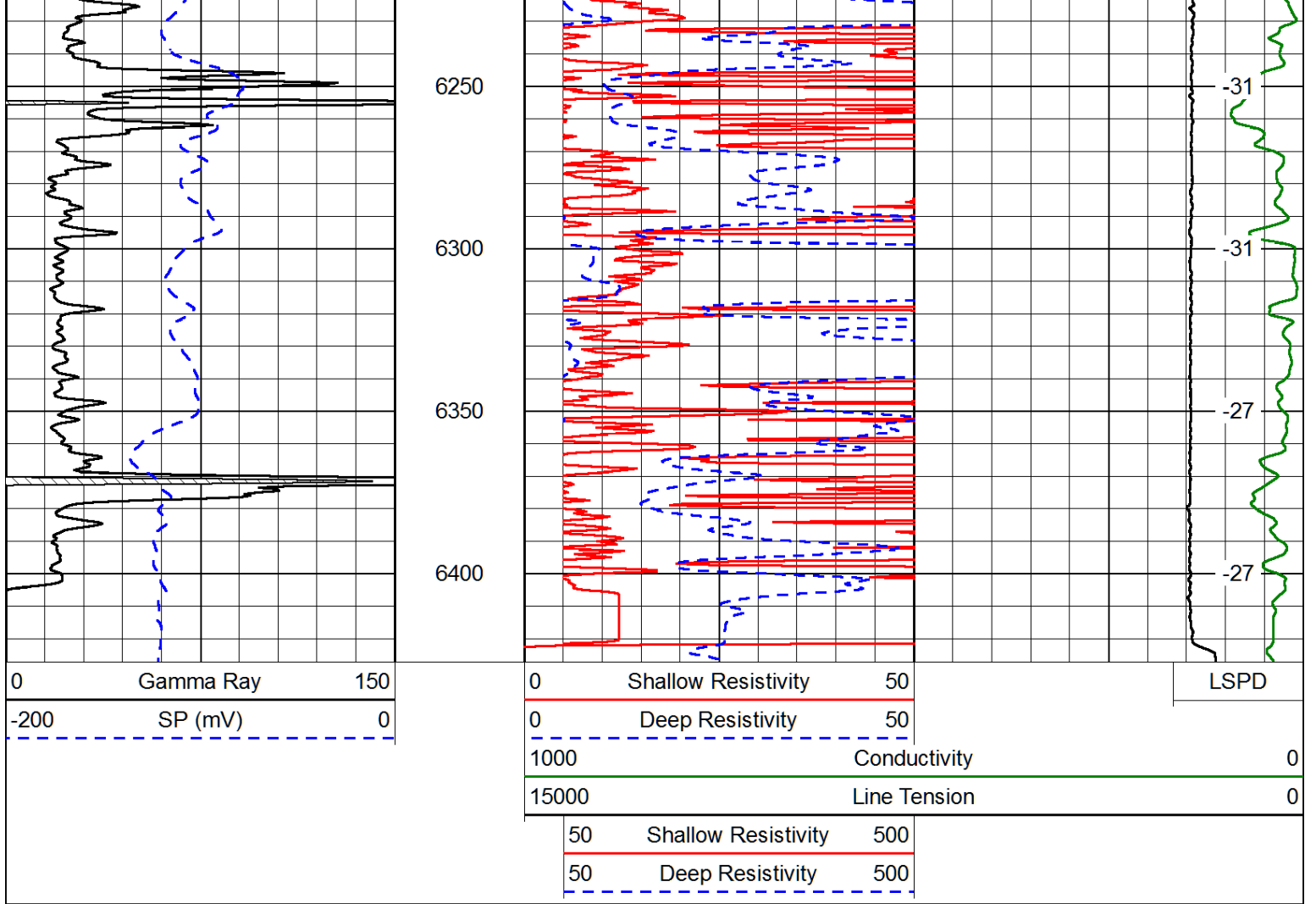
-32

-32

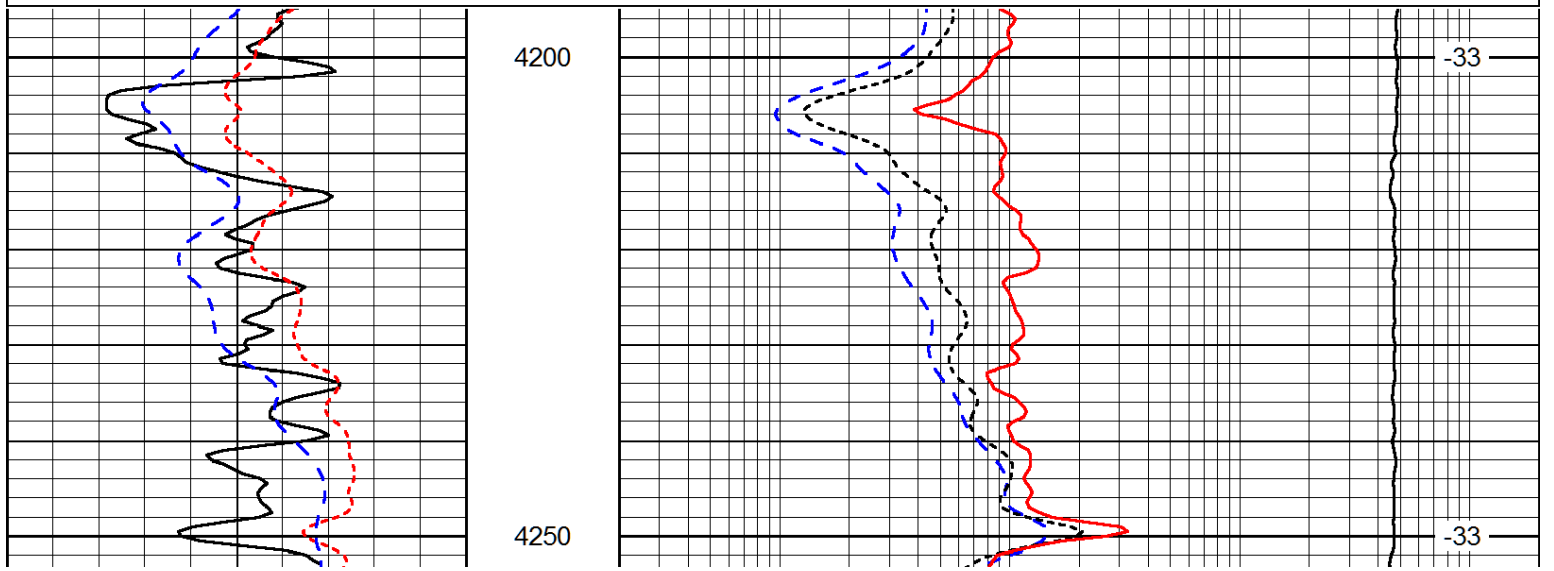
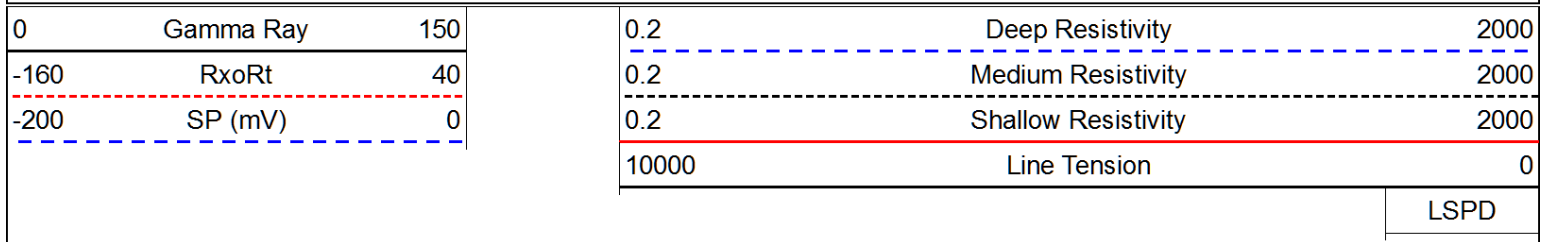
-32

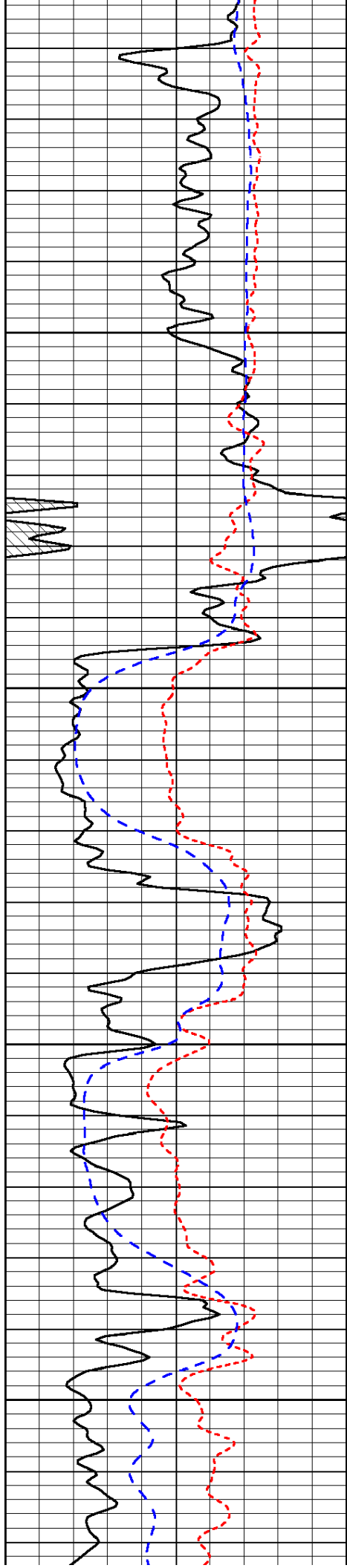
-32

-31



Database File: indian_brad_1hd.db
 Dataset Pathname: dil/instack
 Presentation Format: dil
 Dataset Creation: Fri Nov 07 10:41:29 2014
 Charted by: Depth in Feet scaled 1:240



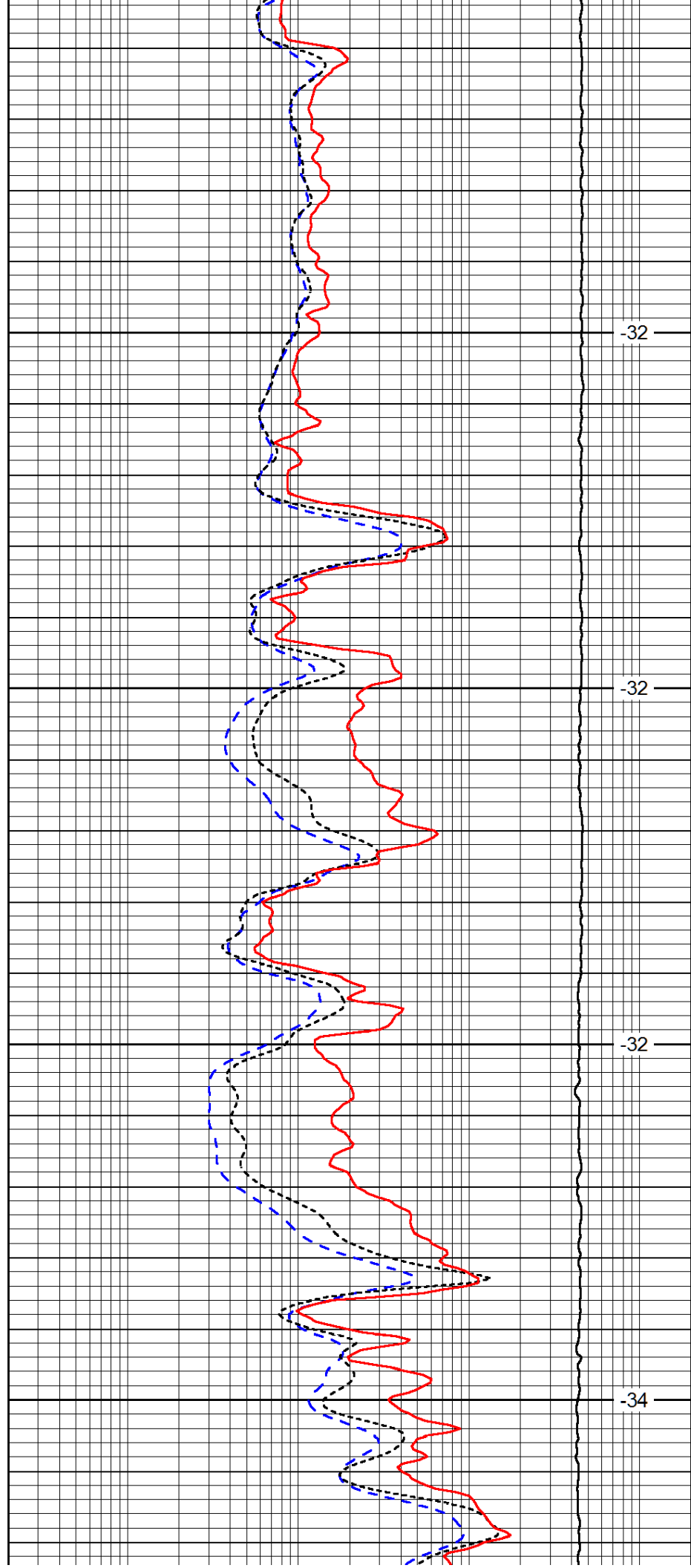


4300

4350

4400

4450

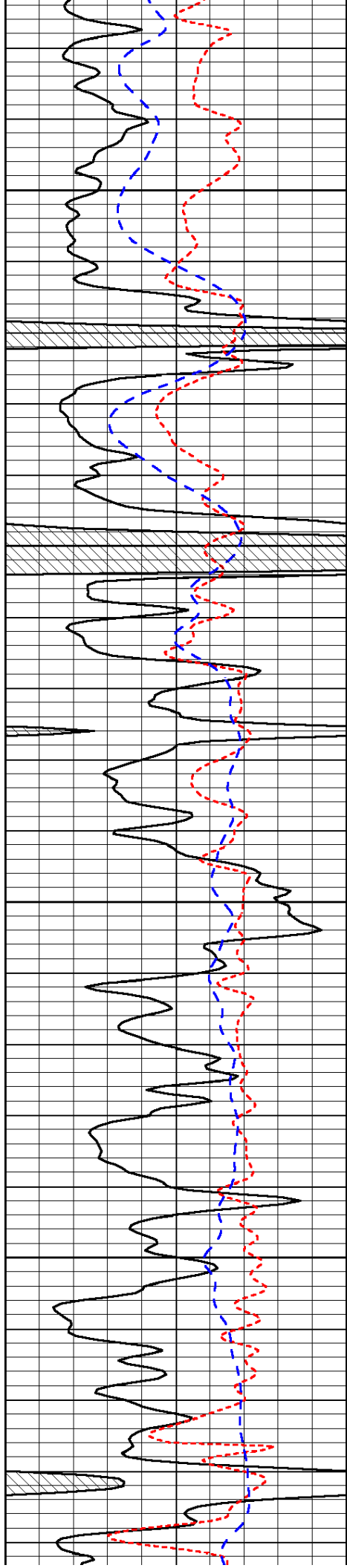


-32

-32

-32

-34

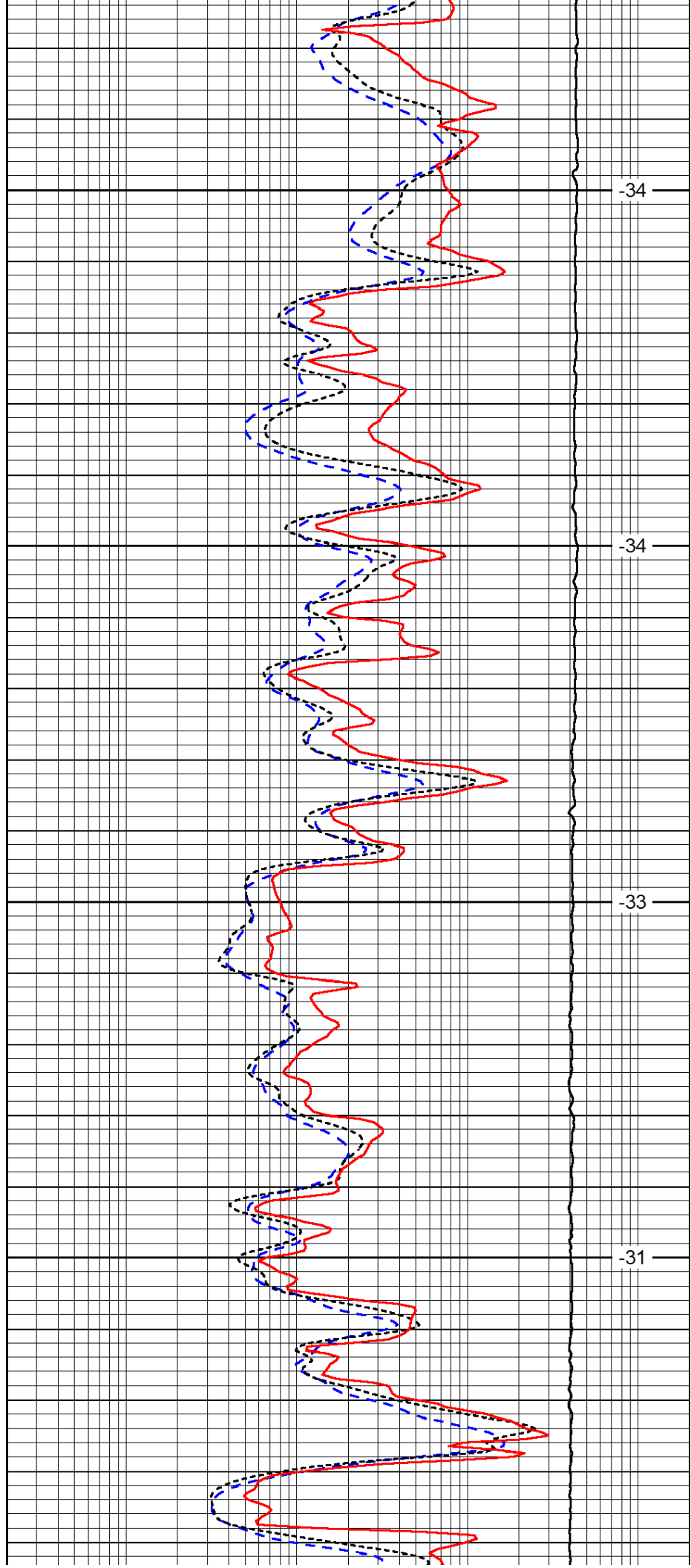


4500

4550

4600

4650

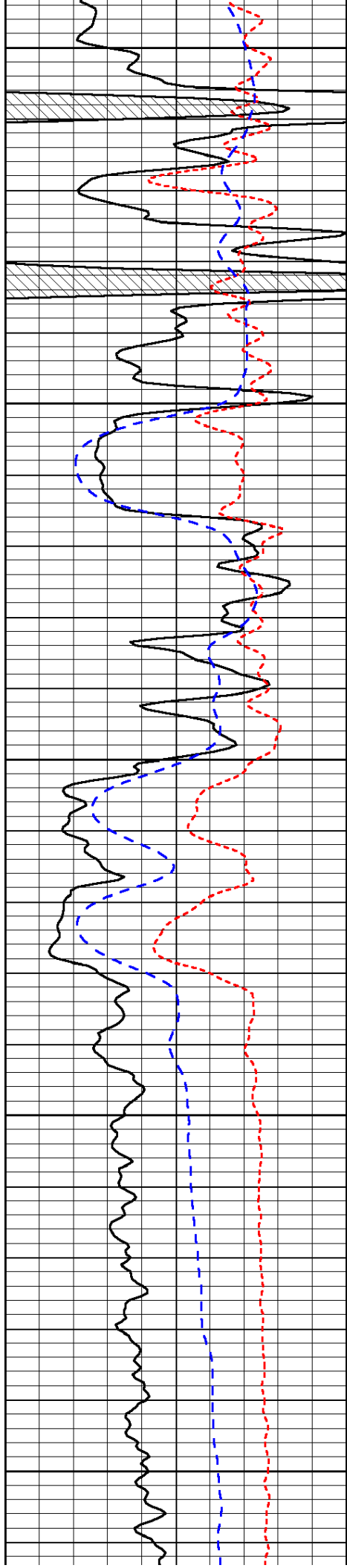


-34

-34

-33

-31



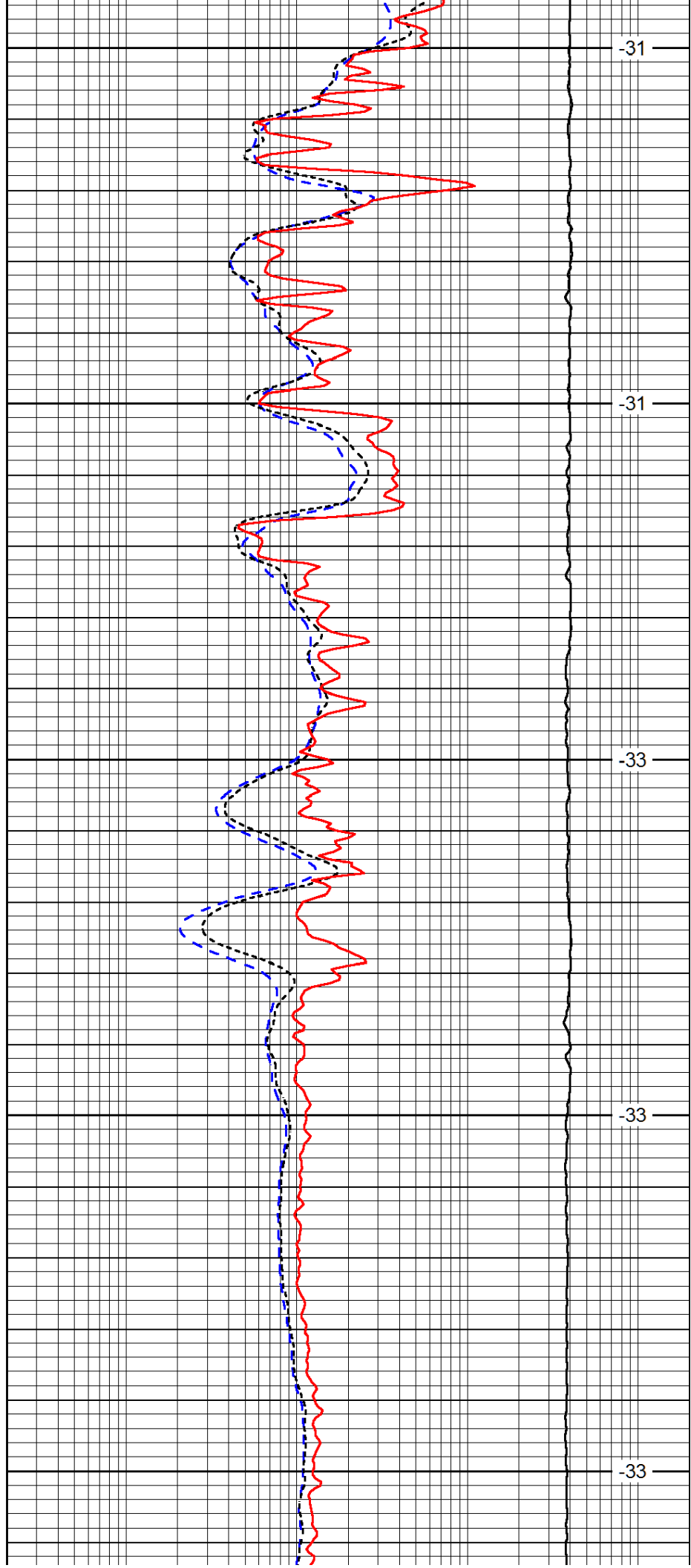
4700

4750

4800

4850

4900



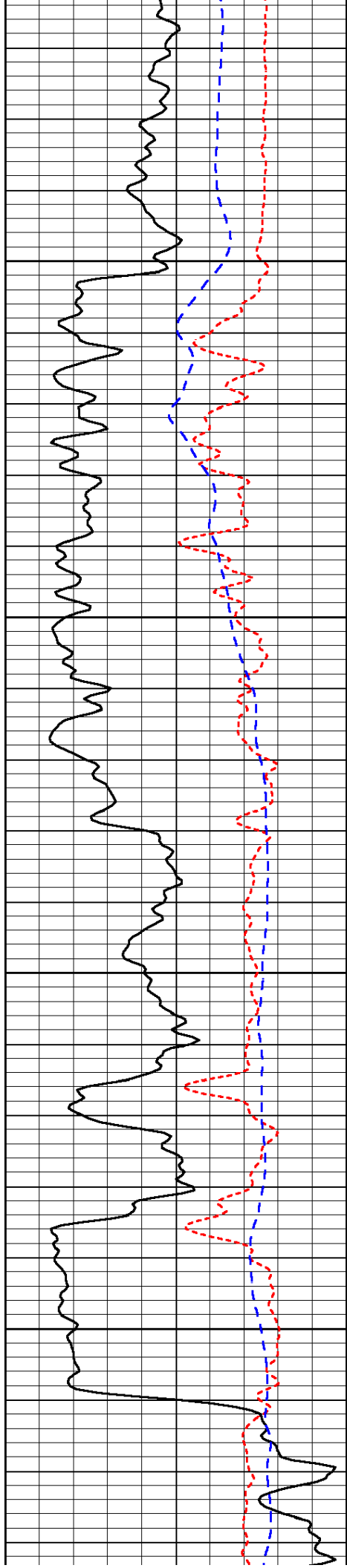
-31

-31

-33

-33

-33

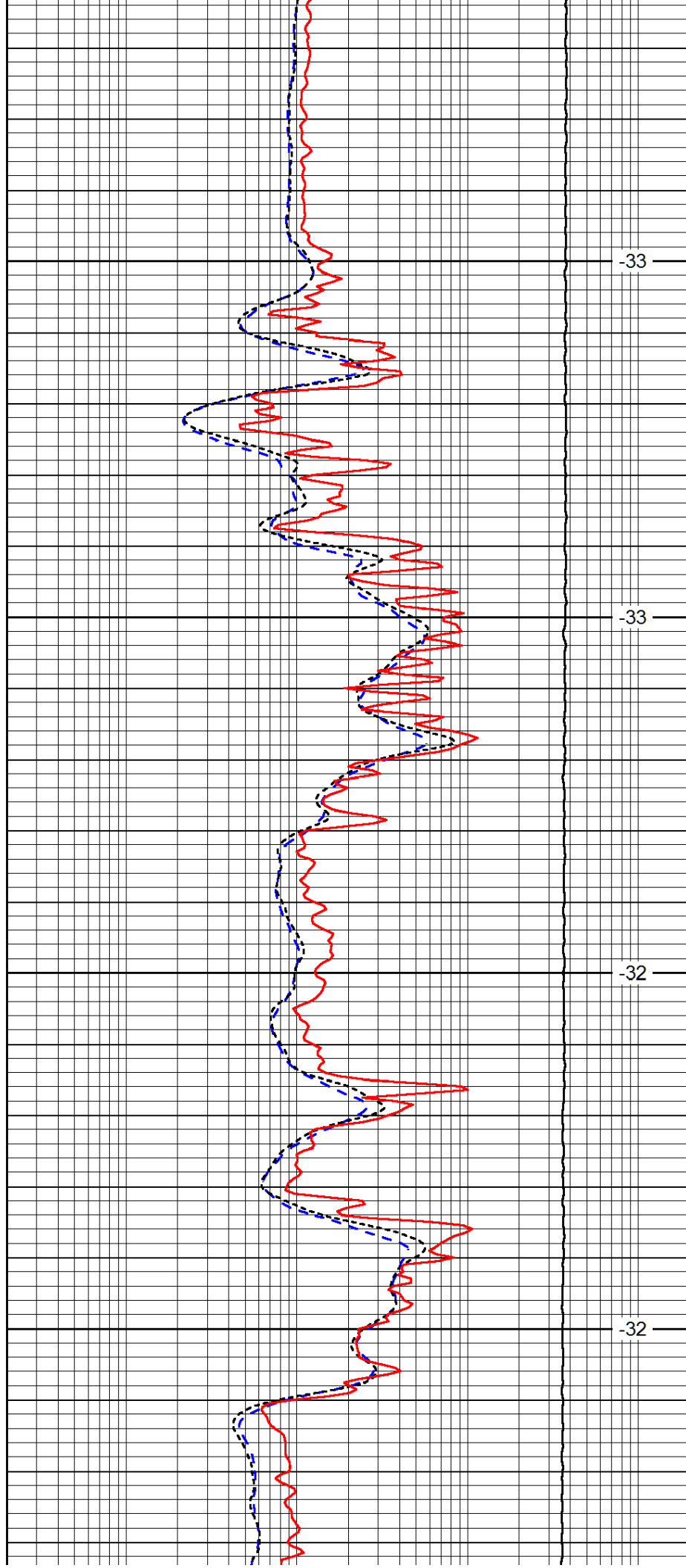


4950

5000

5050

5100

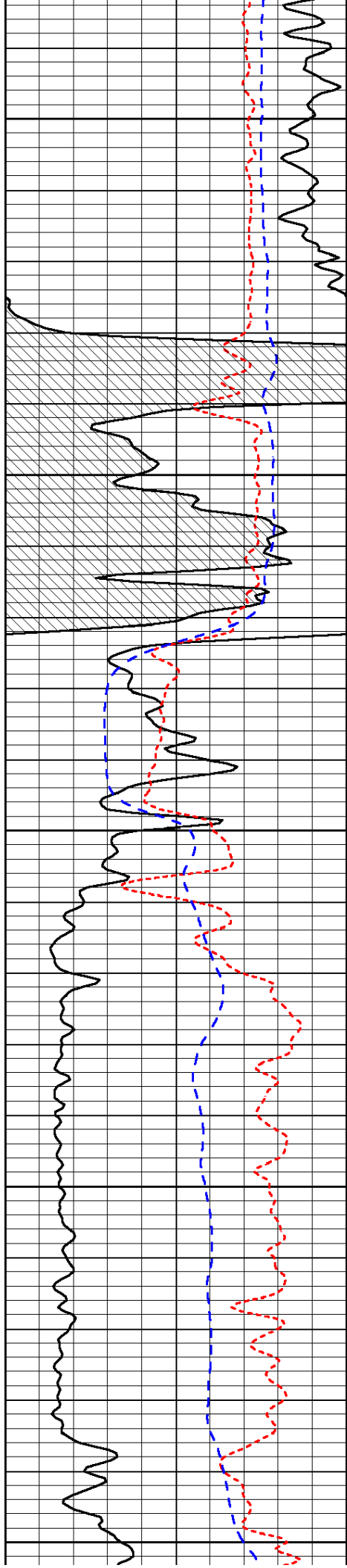


-33

-33

-32

-32



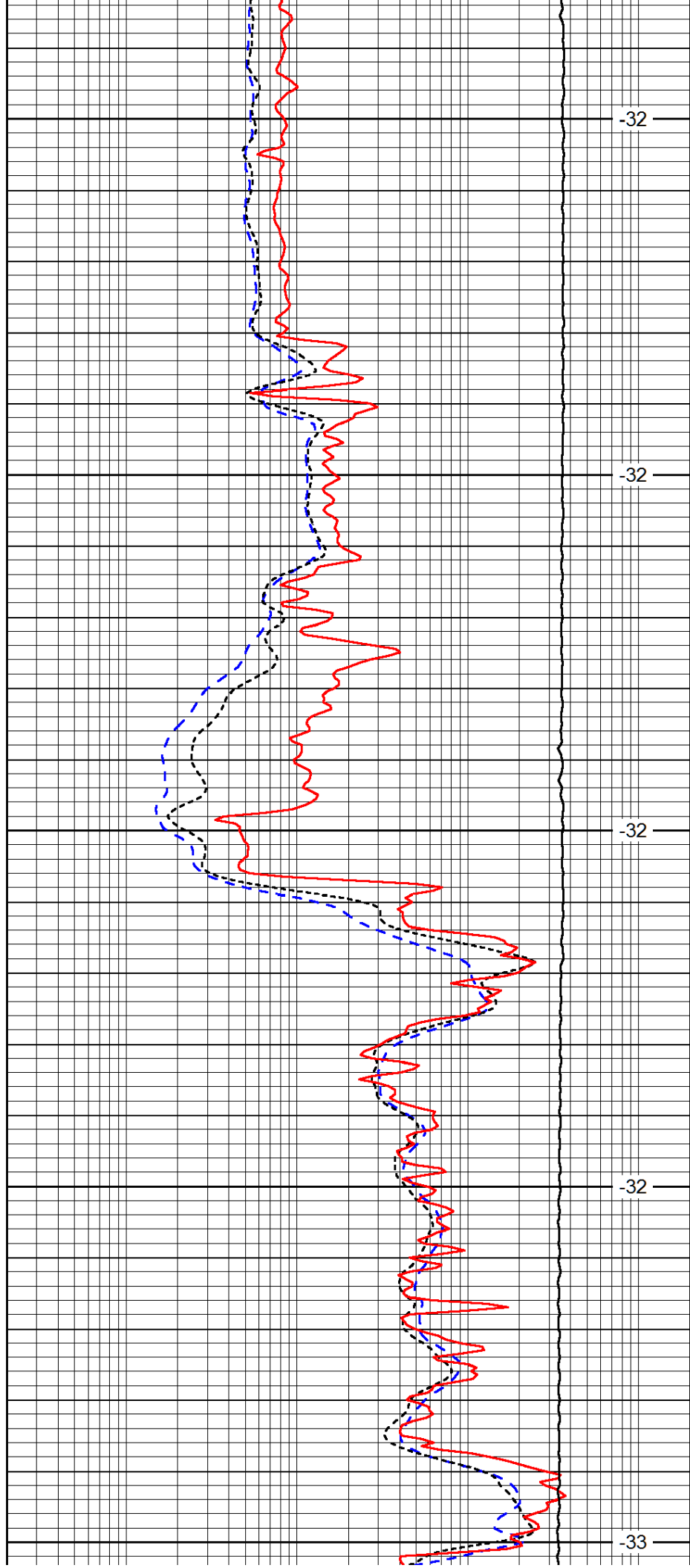
5150

5200

5250

5300

5350



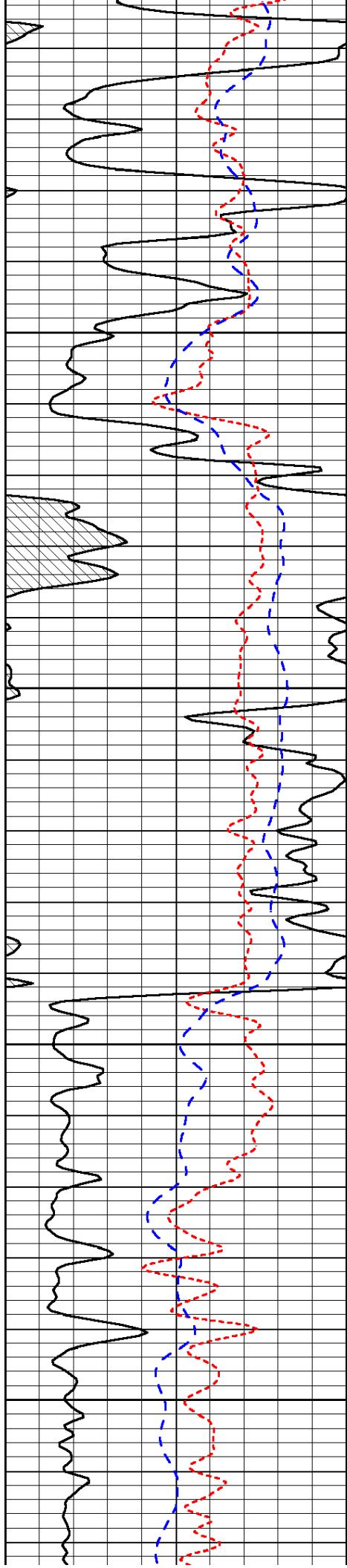
-32

-32

-32

-32

-33

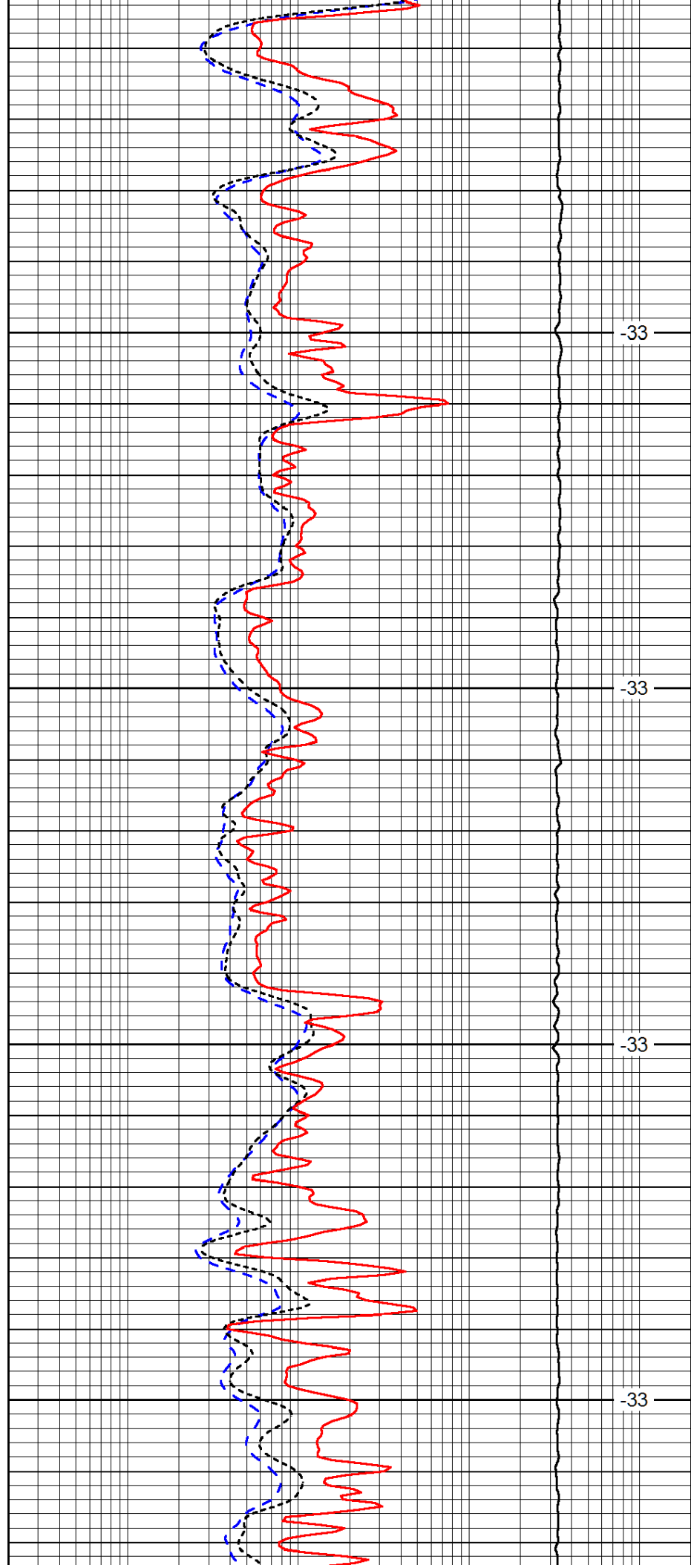


5400

5450

5500

5550

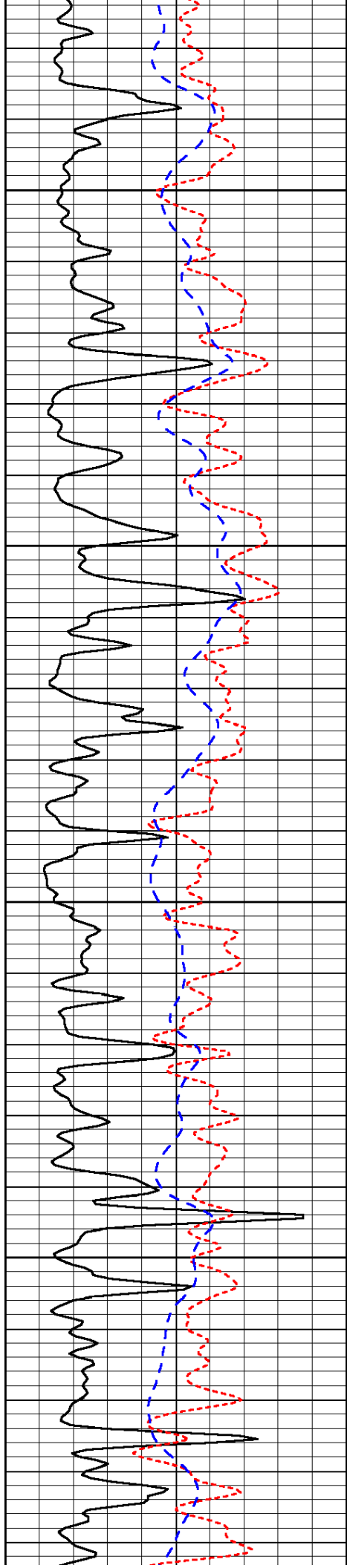


-33

-33

-33

-33

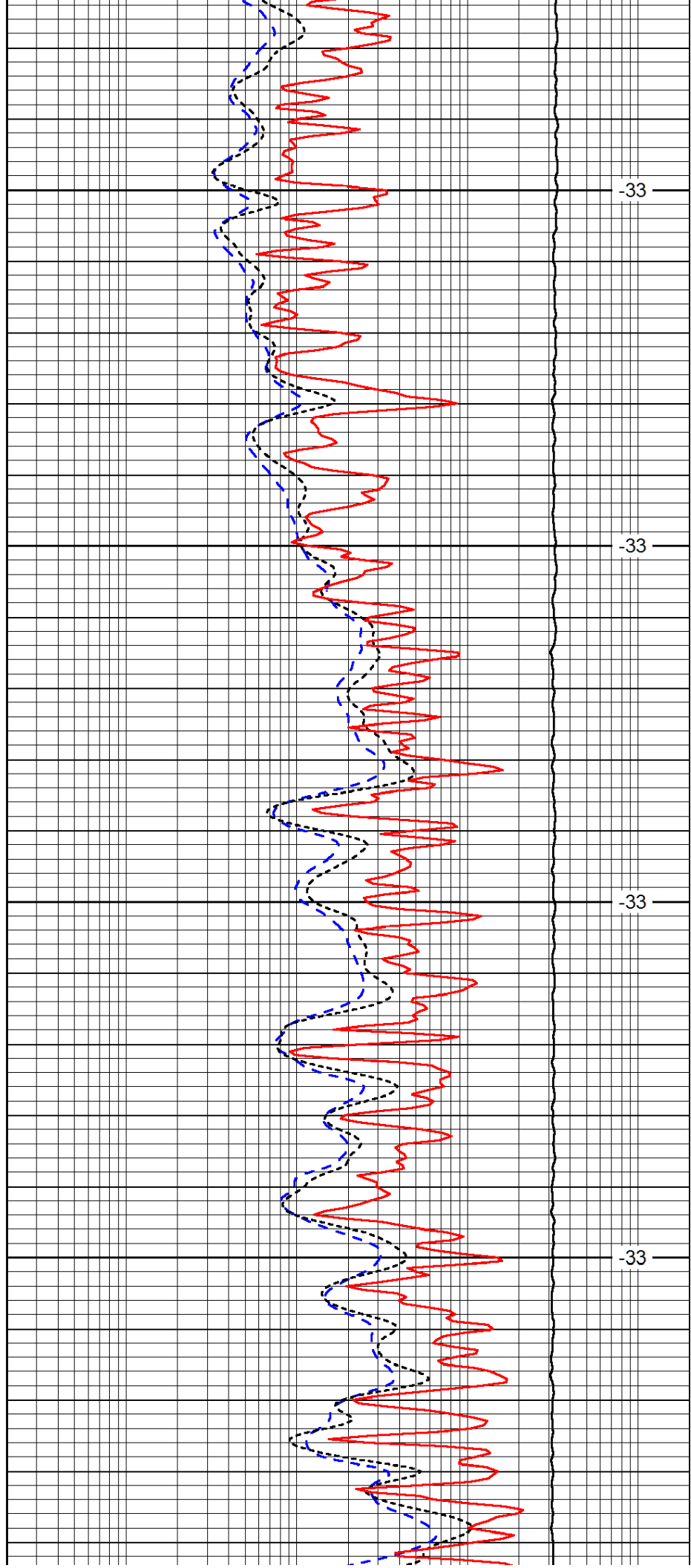


5600

5650

5700

5750

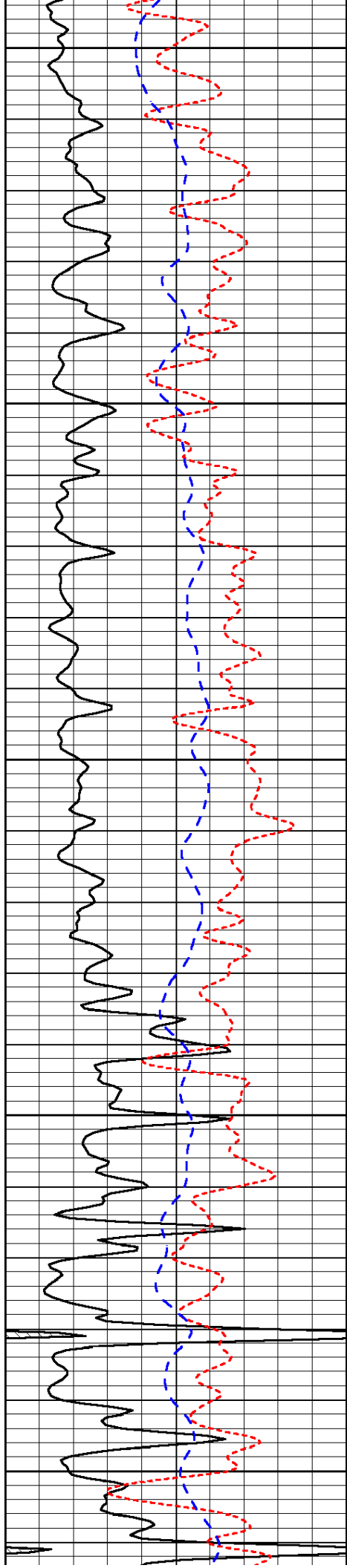


-33

-33

-33

-33



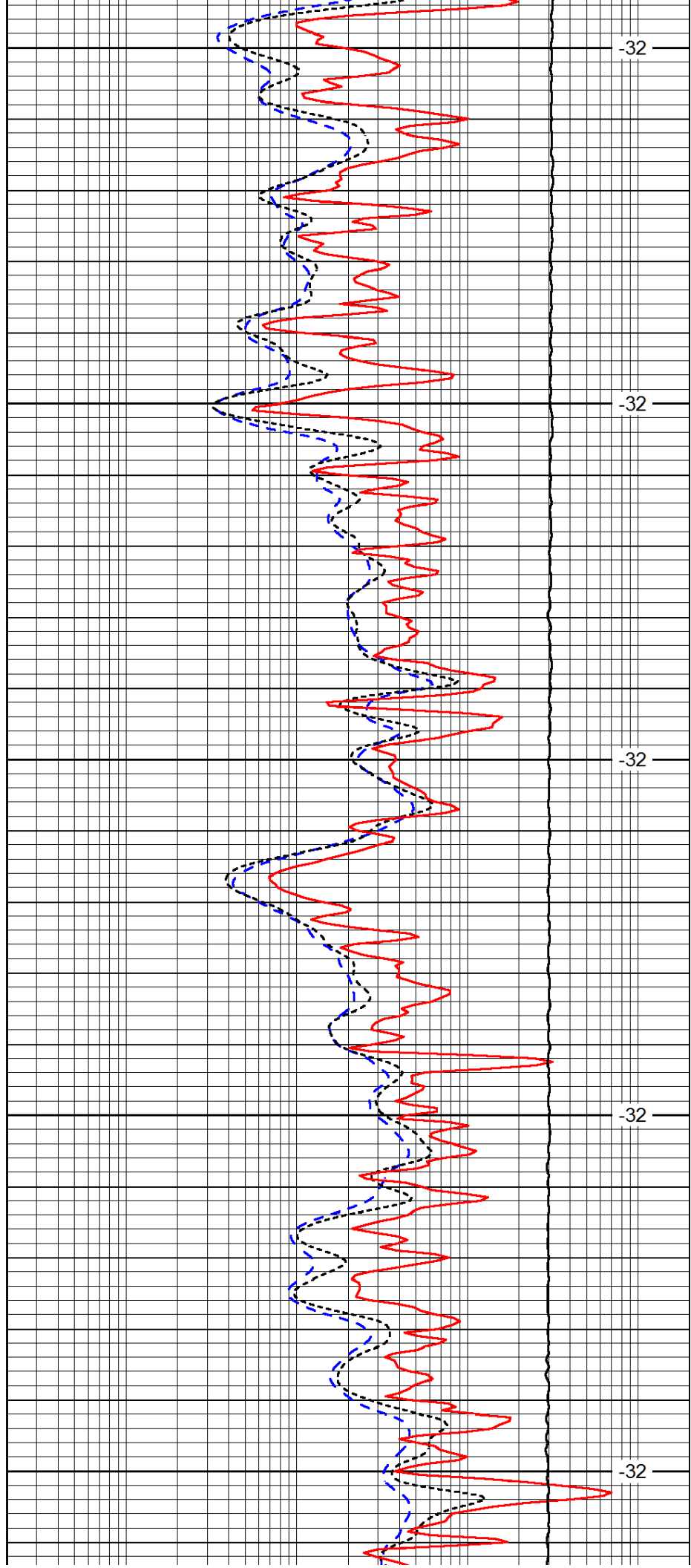
5800

5850

5900

5950

6000



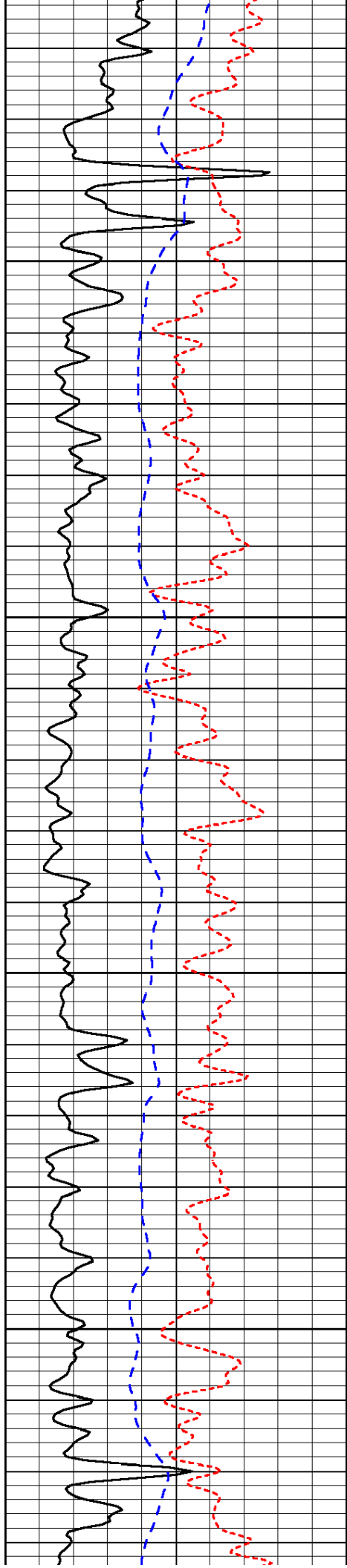
-32

-32

-32

-32

-32

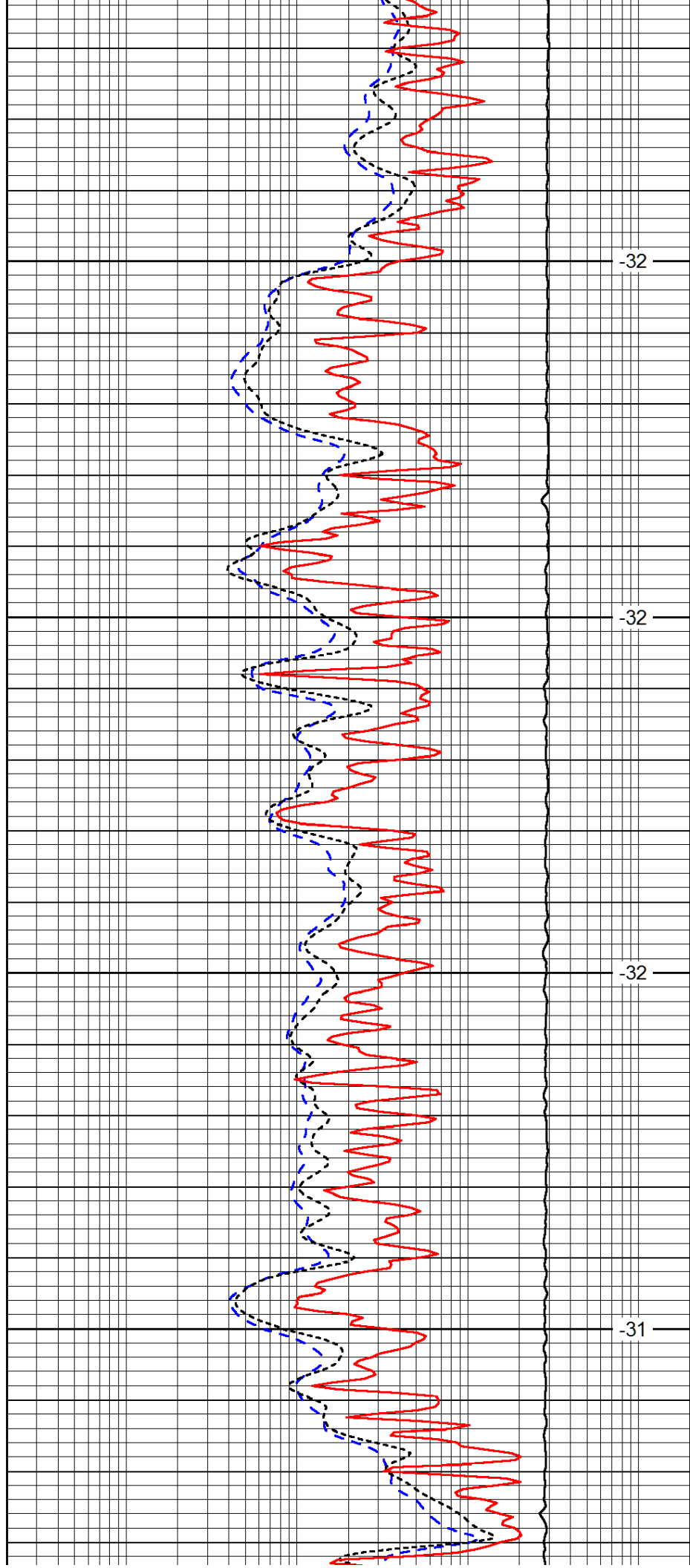


6050

6100

6150

6200

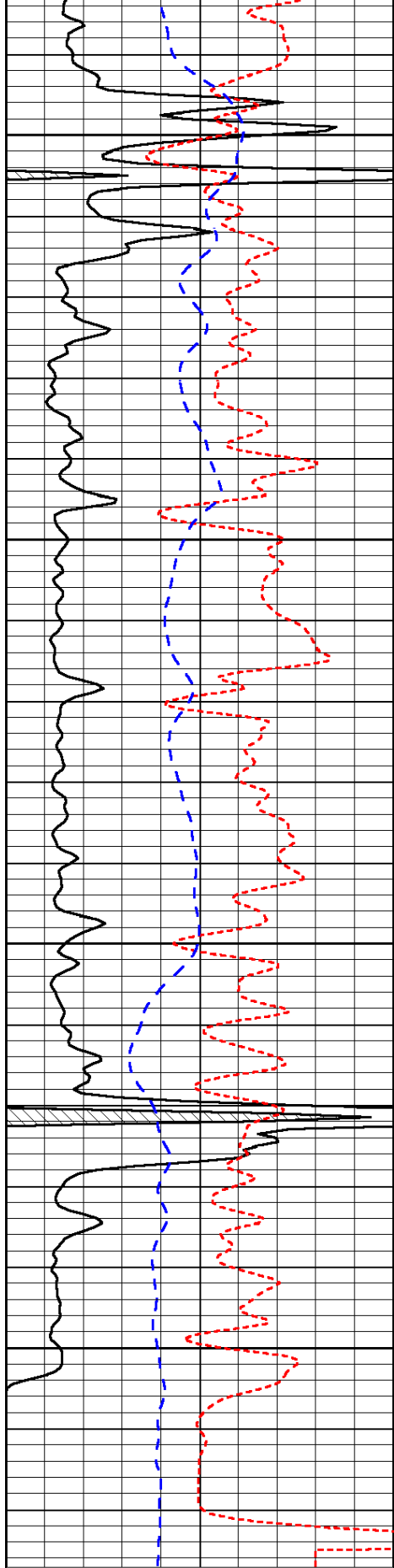


-32

-32

-32

-31



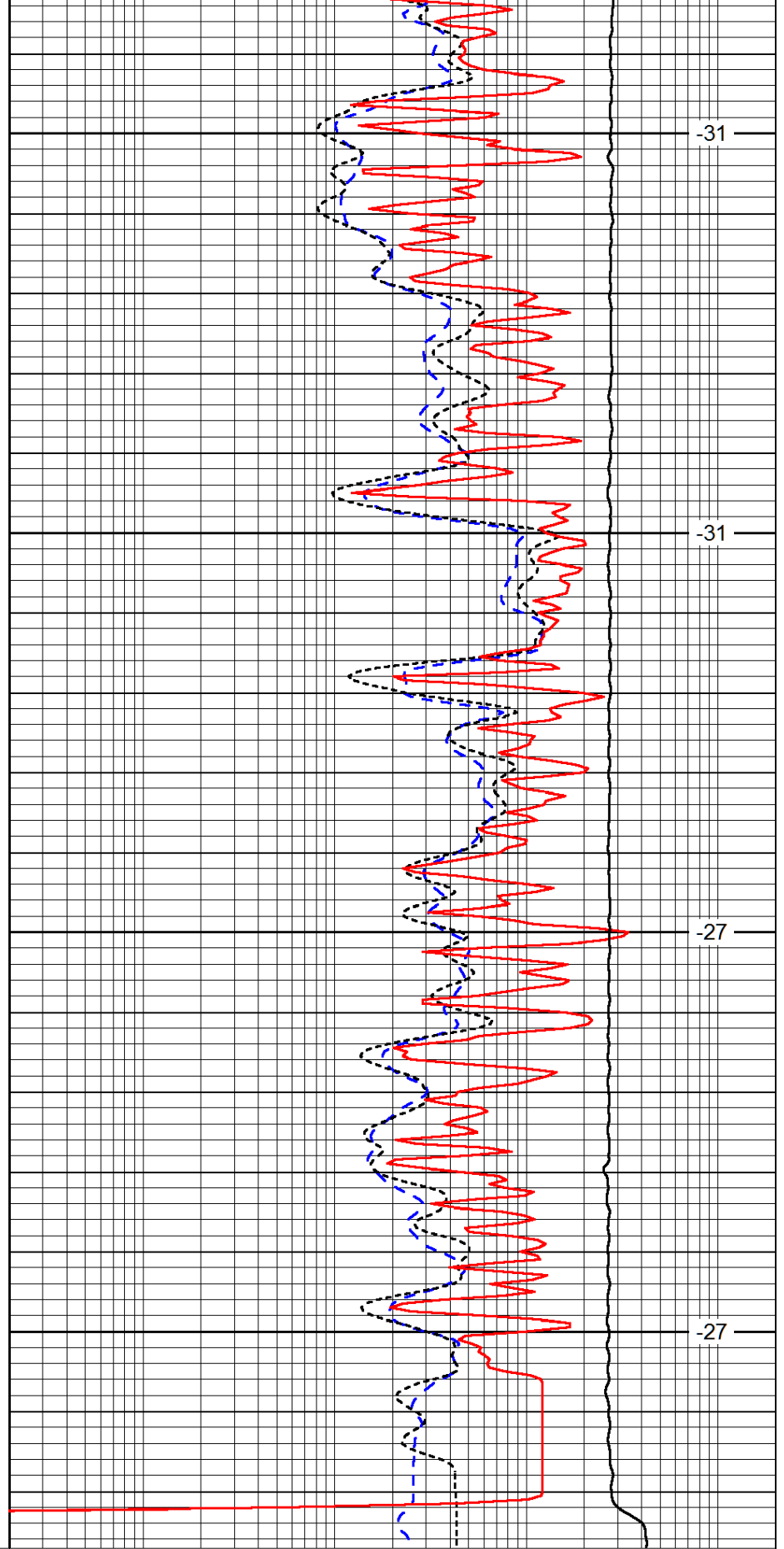
6250

6300

6350

6400

0	Gamma Ray	150
-160	RxoRt	40
-200	SP (mV)	0



-31

-31

-27

-27

0.2	Deep Resistivity	2000
0.2	Medium Resistivity	2000
0.2	Shallow Resistivity	2000
10000	Line Tension	0

LSPD