



MIDWEST SURVEYS
 LOGGING - PERFORATING - CONSULTING SERVICES
 P.O. Box 68, Osawatomie, KS 66064
 913 / 755 - 2128

GAMMA RAY / NEUTRON / CCL

File No.

Company **RJ Enterprises**

Well **Bailey - Krietler No. 40-A**

Field **Centerville**

County **Anderson** State **Kansas**

Location **4490' FSL & 1127' FEL
NW-SW-NE-NE**

Other Services
Perforate

API # 15-003-25,897

Sec. 27 Twp. 21s Rge. 21e
 Permanent Datum GL Elevation NA
 Log Measured From GL
 Drilling Measured From GL

Date

08-01-2013

Run Number

One

Depth Driller

576.0

Depth Logger

570.5

Bottom Logged Interval

569.5

Top Log Interval

20.0

Fluid Level

Full

BORE-HOLE RECORD				CASING RECORD			
RUN	BIT	FROM	TO	SIZE	WGT.	FROM	TO
No.	9.875"	0.0	20.0	7.00"	17.0 #	0.0	20.0
Two	5.625"	20.0	576.0	2.875"	6.5 #	0.0	570.5

Witnessed By
Jason Kent

Recorded By
Gary Windisch

Equipment No.
102

Location
Osawatomie

Max Recorded Temp
0.0

Salinity - PPM Cl
NA

Density / Viscosity
NA

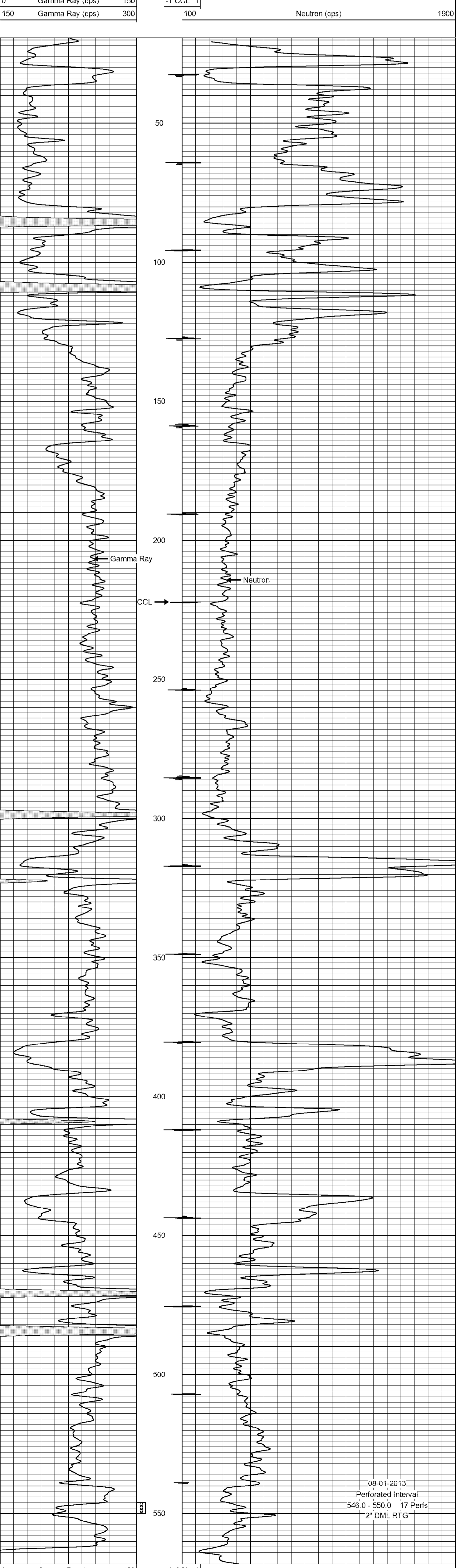
Type Fluid
Water

All interpretations are opinions based on inferences from electrical or other measurements and we cannot and do not guarantee the accuracy or correctness of any interpretation, and we shall not, except in the case of gross or willful negligence on our part, be liable or responsible for any loss, costs, damages, or expenses incurred or sustained by anyone resulting from any interpretation made by any of our officers, agents or employees. These interpretations are also subject to our general terms and conditions set out in our current Price Schedule.

Comments

Drilling Contractor :
RJ Enterprises

Database File: bailey40a.db
 Dataset Pathname: pass1
 Presentation Format: gr-n-ccl
 Dataset Creation: Thu Aug 01 13:51:17 2013 by Log SCH 111116
 Charted by: Depth in Feet scaled 1:240



08-01-2013
 Perforated Interval
 546.0 - 550.0 17 Perfs
 2" DML RTG

0 Gamma Ray (cps) 150
 150 Gamma Ray (cps) 300
 -1 CCL 1
 100 Neutron (cps) 1900