



Pioneer Energy Services

Computer Processed Interpretation

15-163-24,111-00-00

API No.

Company Gore Oil Company

Well Toelkes No. 1

Field O' Brien

County Rooks State Kansas

Location

550' FSL & 2,970' FEL

Other Services
DIL/CNL/CDL
MEL

Sec: 11 Twp: 9S Rge: 18W

Elevation

Permanent Datum

Ground Level

Elevation 2065

Log Measured From

Kelly Bushing 8 Ft. Above Perm. Datum

Drilling Measured From

K.B. 2073
D.F. 2065
G.L. 2065

Date Recorded 5/20/2013

Depth Logger 3578

Curve Definitions

SW Water Saturation

SXO Water Saturation In The Flushed Zone

VCL Volume Of Clay

PHIE Density - Neutron Crossplot Shale Corrected

BWV Bulk Volume Water

BWMSXO Bulk Volume Water In Flushed Zone

DCAL Caliper

SPC SP Corrected For Baseline

DGA Apparent Grain Density

Payflag If: PHIE> 2 %, VCL< 40 %, SPC> -10 , SW< 50 % & DCAL< 11

Recorded By J. Long

Witnessed By Marc Downing

Analysis By T. Martin

<<< Fold Here >>>

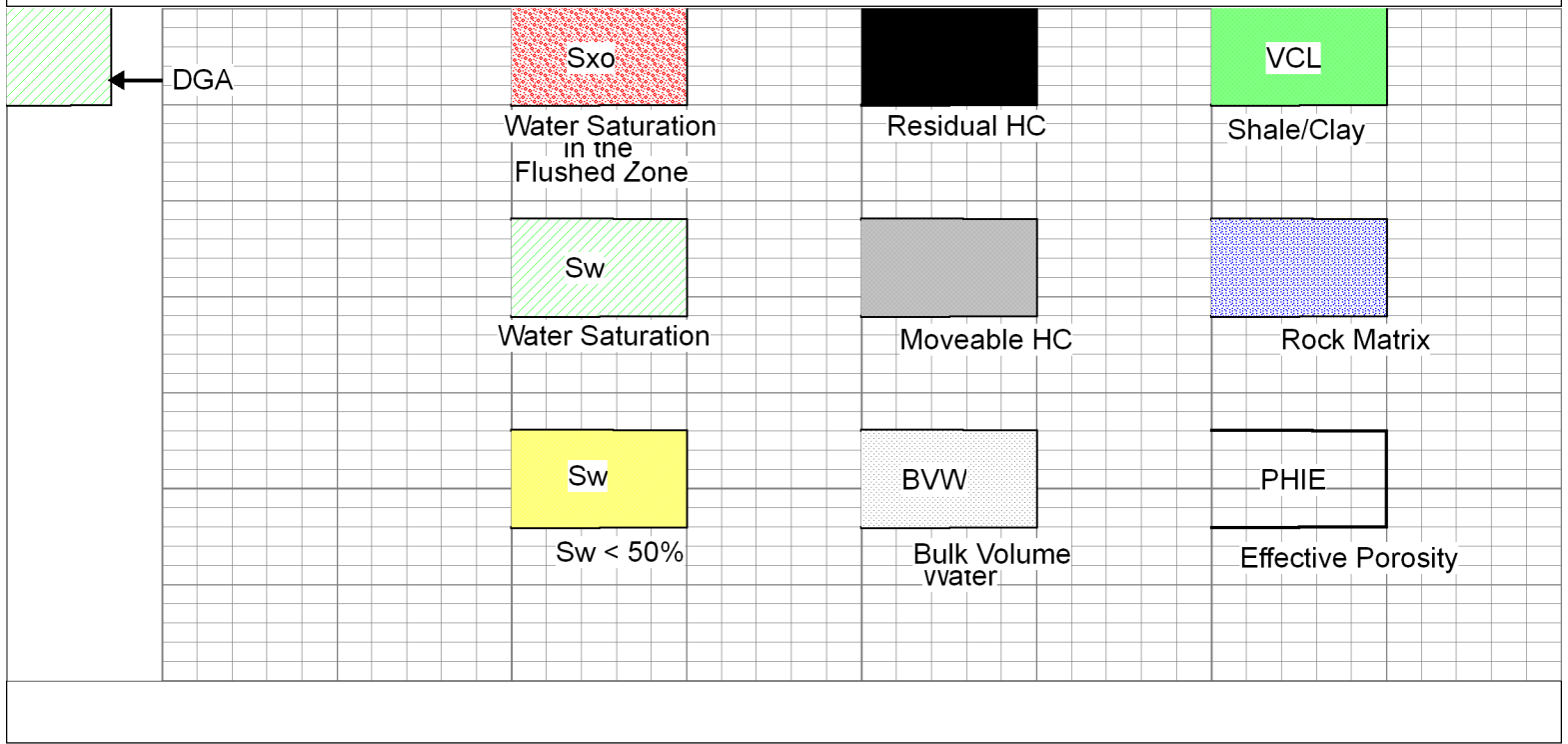
All interpretations are opinions based on inferences from electrical or other measurements and we cannot and do not guarantee the accuracy or correctness of any interpretation, and we shall not, except in the case of gross or willful negligence on our part, be liable or responsible for any loss, costs, damages, or expenses incurred or sustained by anyone resulting from any interpretation made by any of our officers, agents or employees. These interpretations are also subject to our general terms and conditions set out in our current Price Schedule.

Comments

Thank you for using Log-Tech, Inc.
www.logtechinc.com

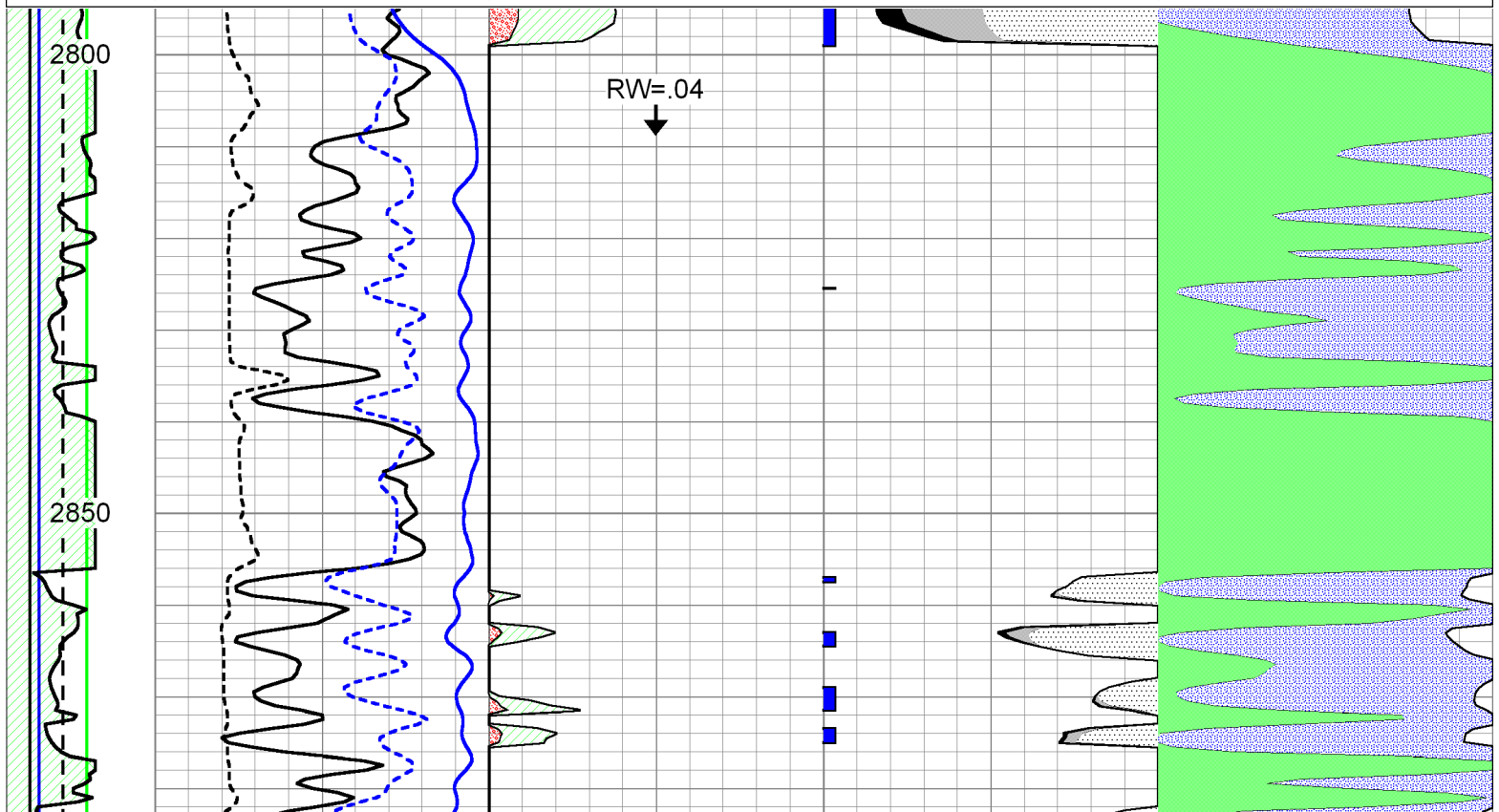
Plainville, 3 North, 100 Yards West, North Into

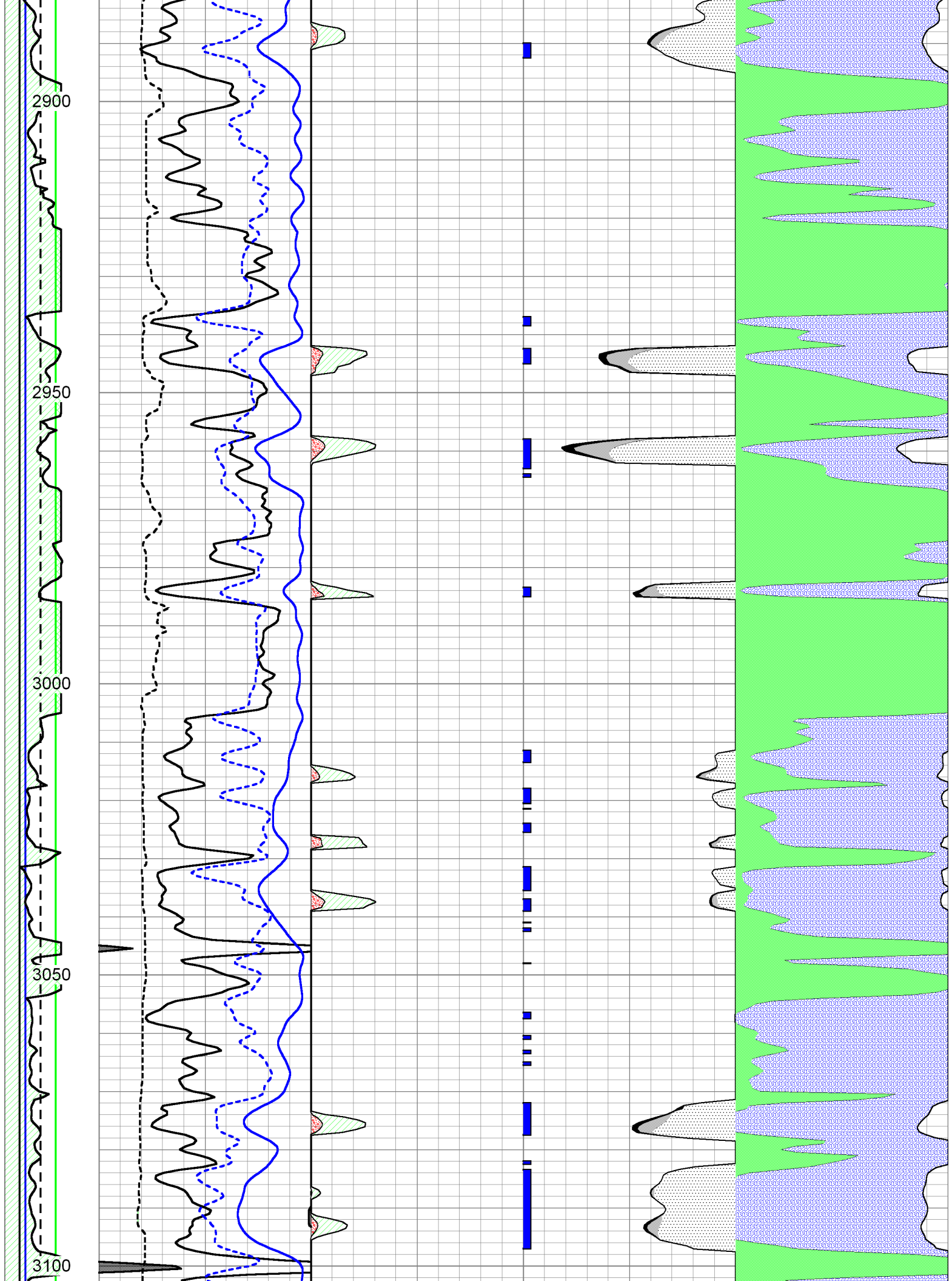
Database File: c:\warrior\data\cross plots\2wxplt.db
Dataset Pathname: litho
Presentation Format: 2wxplt
Dataset Creation: Thu Apr 24 14:32:02 1997
Charted by: Depth in Feet scaled 1:240

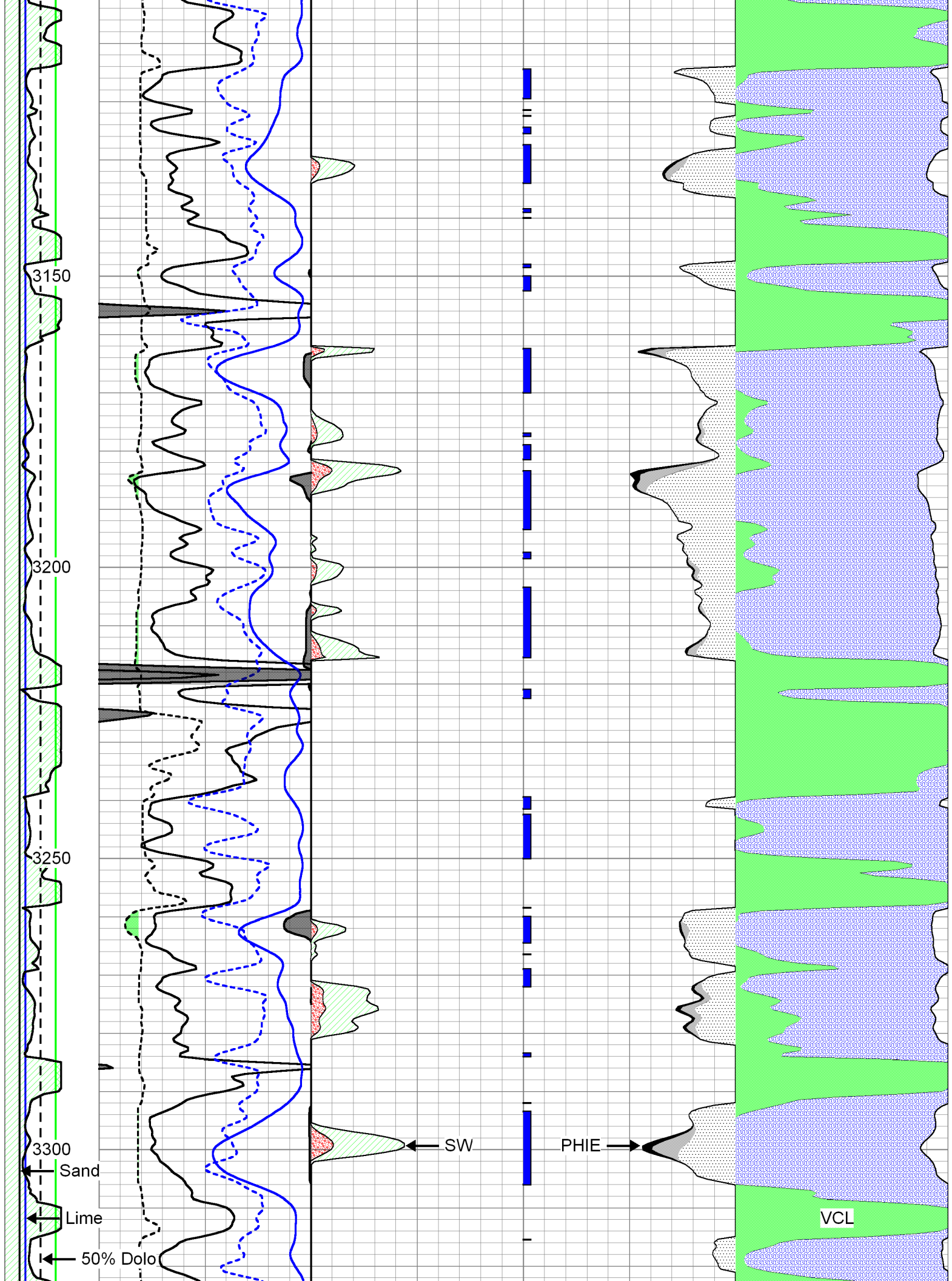


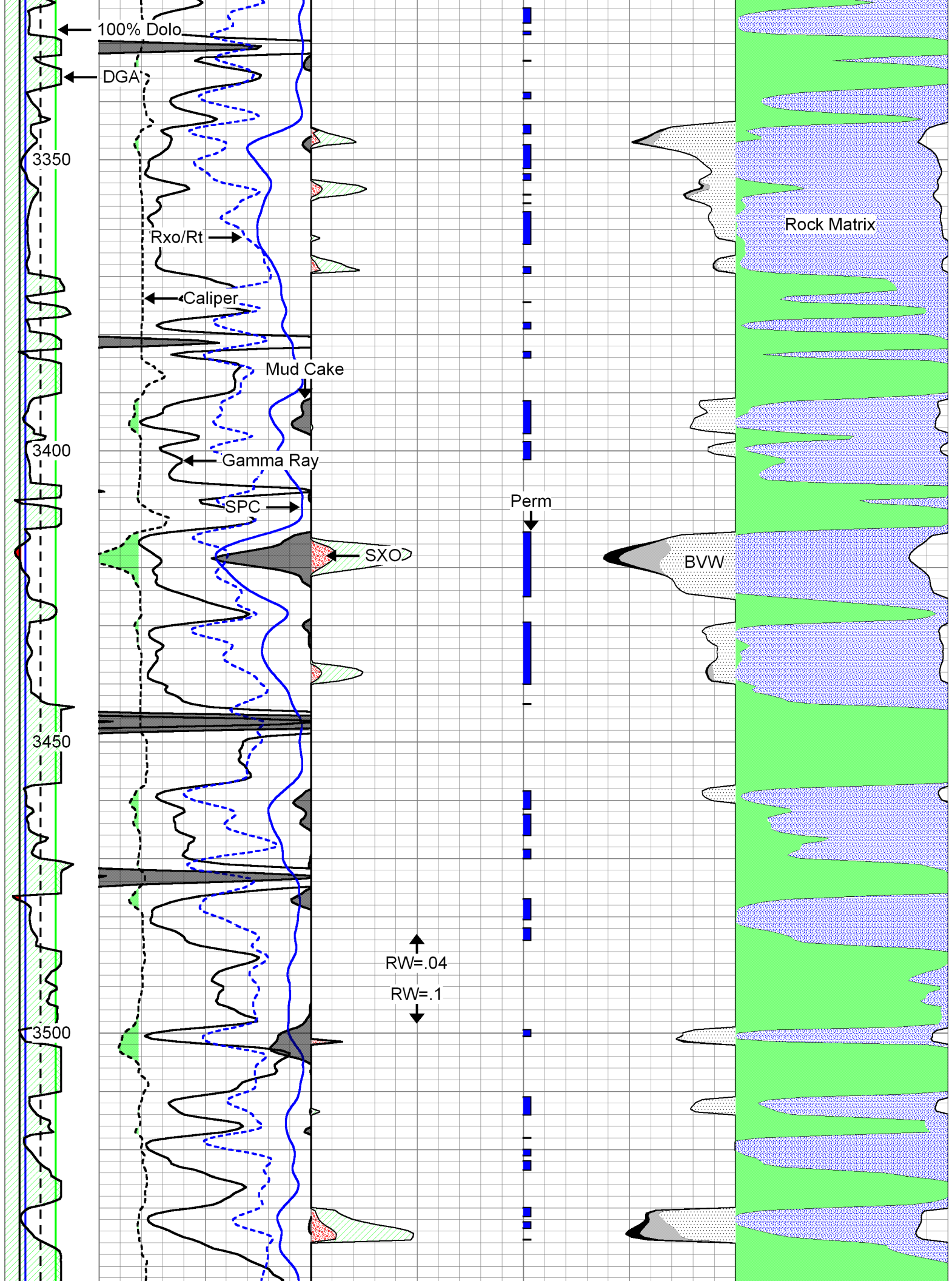
Database File: gore_toelkes_1hd.db
 Dataset Pathname: dil/gorecpi
 Presentation Format: calc
 Dataset Creation: Mon May 20 16:40:42 2013
 Charted by: Depth in Feet scaled 1:240

DGA	Gamma Ray	1	SW	0	0.3	PHIE	0	0	VCL	1
(g/cc)	(GAPI)	150	PAYFLAG	0	0.3	BVW	0	1	PHIE	0
2.6 3.1	DCAL (in)	16	1	SXO	0	0	PERM	30		
	SPC (mV)	0			0.3	BVWSXO	0			









DGA	Gamma Ray	1	SW	0	0.3	PHIE	0	0	VCL	1
(g/cc)	(GAPI)	150	PAYFLAG	0	0.3	BVW	0	1	PHIE	0
2.6	3.1	6	DCAL (in)	16	1	SXO	0	0	PERM	30
	-150	SPC (mV)	0			0.3	BVWSXO	0		