



**COMPLETION
& PRODUCTION
SERVICES CO.**

**MICRO
LOG**

Company CHARTER ENERGY INC.
Well CJ & M "A" #2
Field PAWNEE ROCK
County PAWNEE
State KANSAS

Company CHARTER ENERGY INC.
Well CJ & M "A" #2
Field PAWNEE ROCK
County PAWNEE State KANSAS

Location: API # : 15-145-21723-00-00
1,650' FSL & 1,065' FEL
W2 - SW - NE - SE
SEC 26 TWP 20S RGE 16W
Permanent Datum GROUND LEVEL Elevation 2037
Log Measured From KELLY BUSHING 7' A.G.L.
Drilling Measured From KELLY BUSHING
Other Services
CNL/CDL
DIL
Elevation
K.B. 2044
D.F. 2042
G.L. 2037

Date	6/12/13
Run Number	TWO
Depth Driller	3885
Depth Logger	3884
Bottom Logged Interval	3882
Top Log Interval	3250
Casing Driller	8 5/8" @ 1072
Casing Logger	1074
Bit Size	7 7/8
Type Fluid in Hole	CHEMICAL MUD
Density / Viscosity	9.1/56
pH / Fluid Loss	11.0/9.6
Source of Sample	FLOWLINE
Rim @ Meas. Temp	.40 @ 96F
Rmf @ Meas. Temp	.30 @ 96F
Rmc @ Meas. Temp	.14 @ 96F
Source of Rmf / Rmc	MEASURED
Rim @ BHT	.33 @ 115F
Time Circulation Stopped	2 HOURS
Time Logger on Bottom	
Maximum Recorded Temperature	110F
Equipment Number	680
Location	HAYS, KS.
Recorded By	IAN MABB
Witnessed By	WYATT URBAN

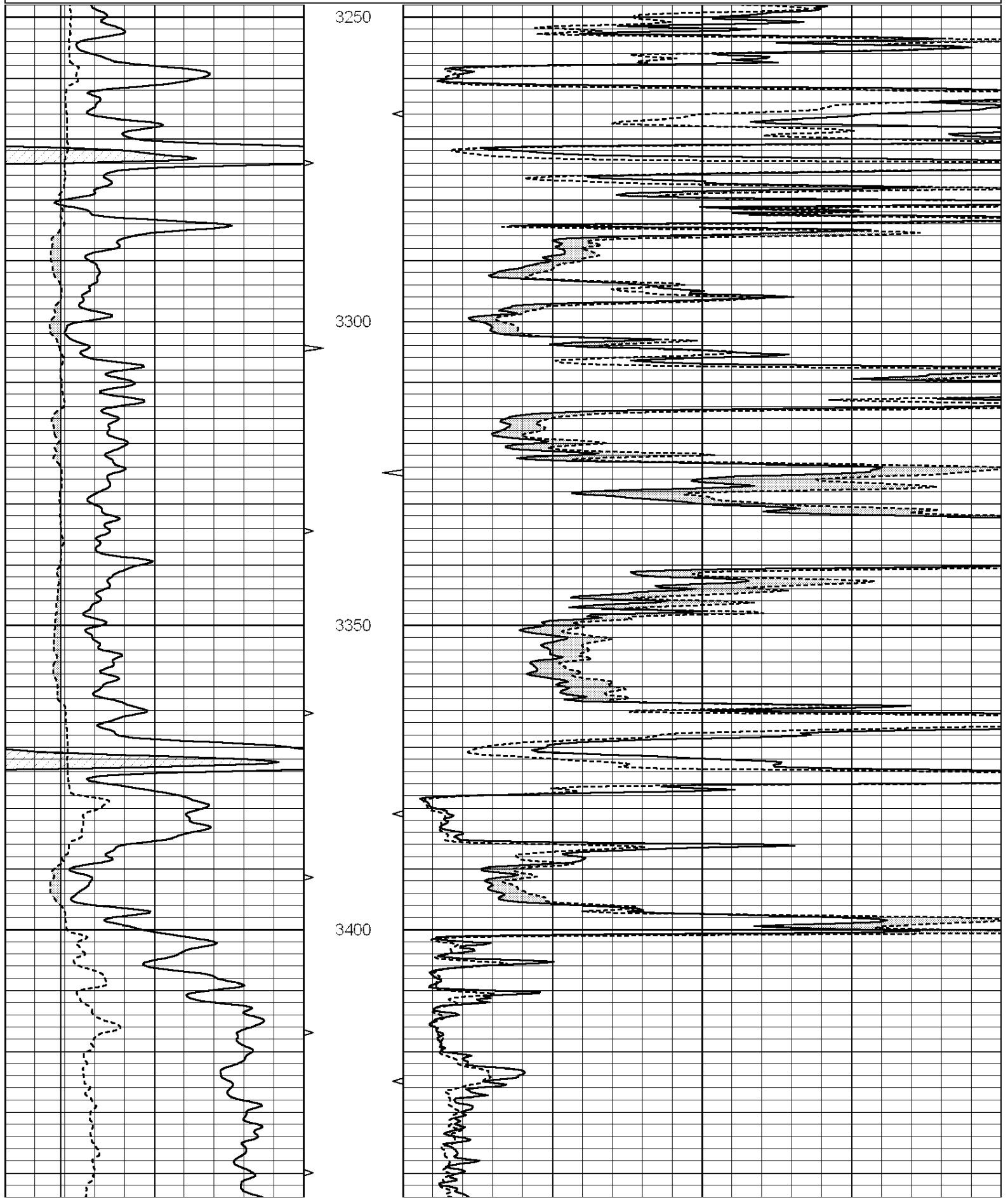
<<< Fold Here >>>

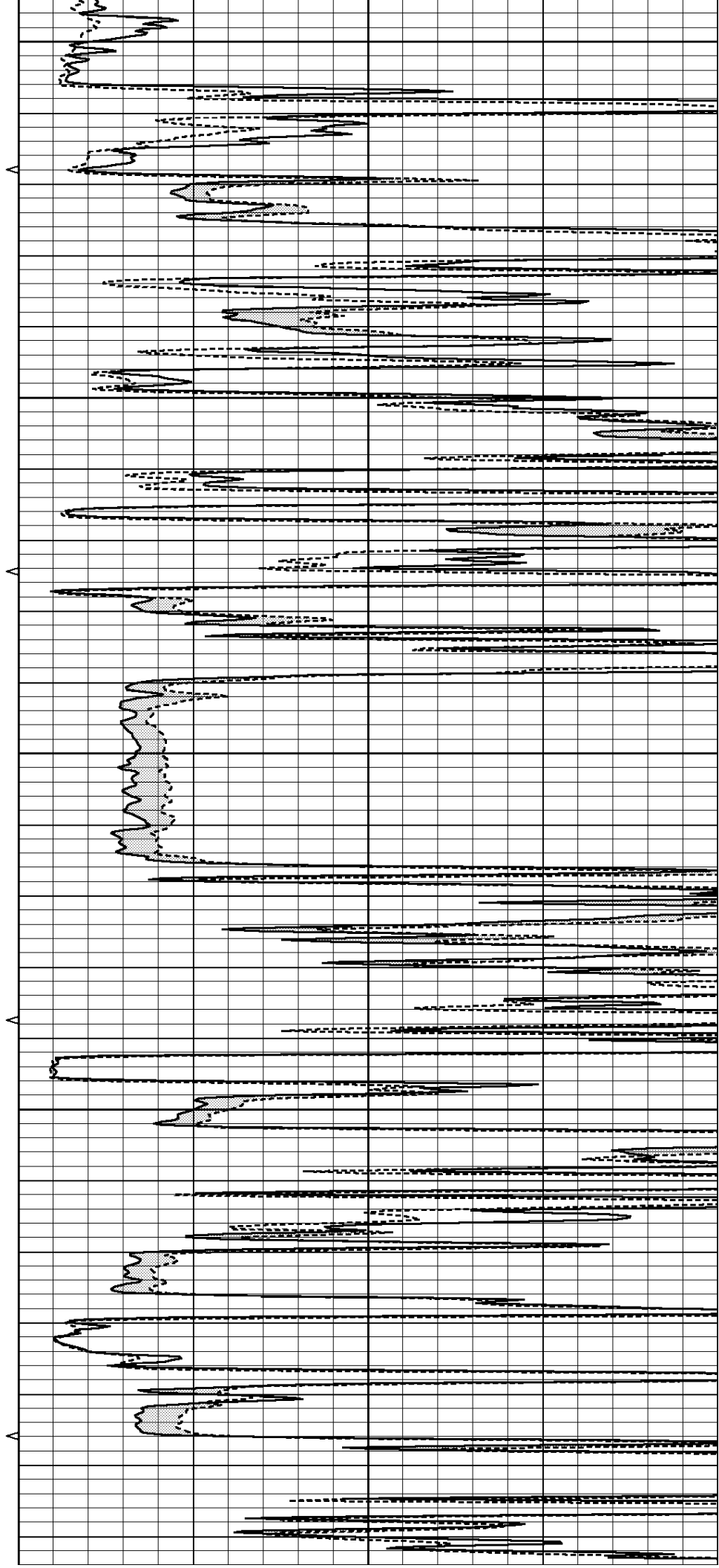
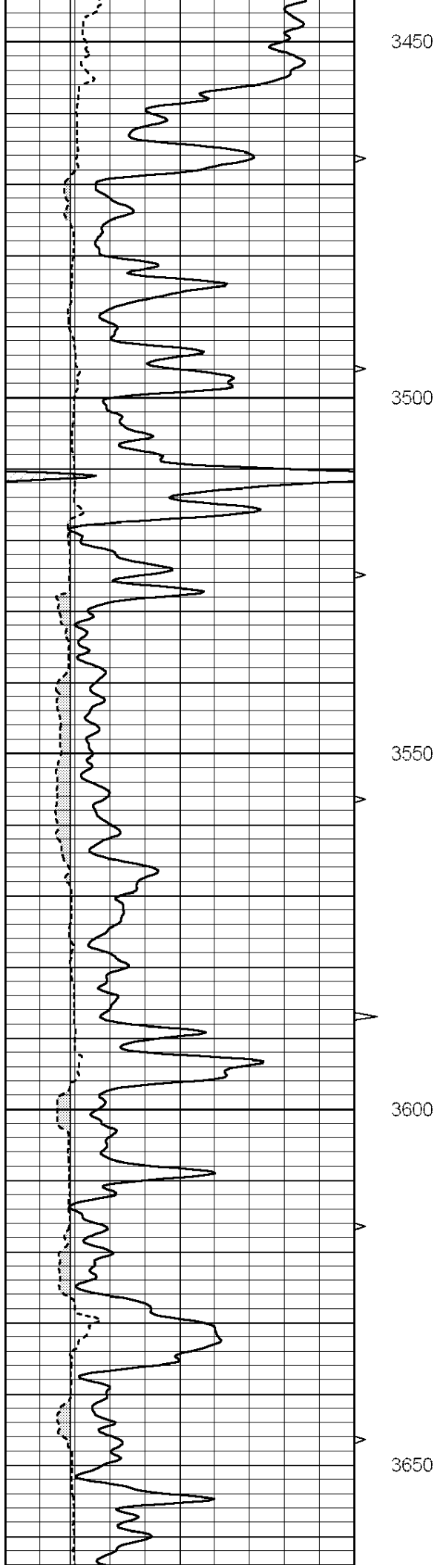
All interpretations are opinions based on inferences from electrical or other measurements and we cannot and do not guarantee the accuracy or correctness of any interpretation, and we shall not, except in the case of gross or willful negligence on our part, be liable or responsible for any loss, costs, damages, or expenses incurred or sustained by anyone resulting from any interpretation made by any of our officers, agents or employees. These interpretations are also subject to our general terms and conditions set out in our current Price Schedule.

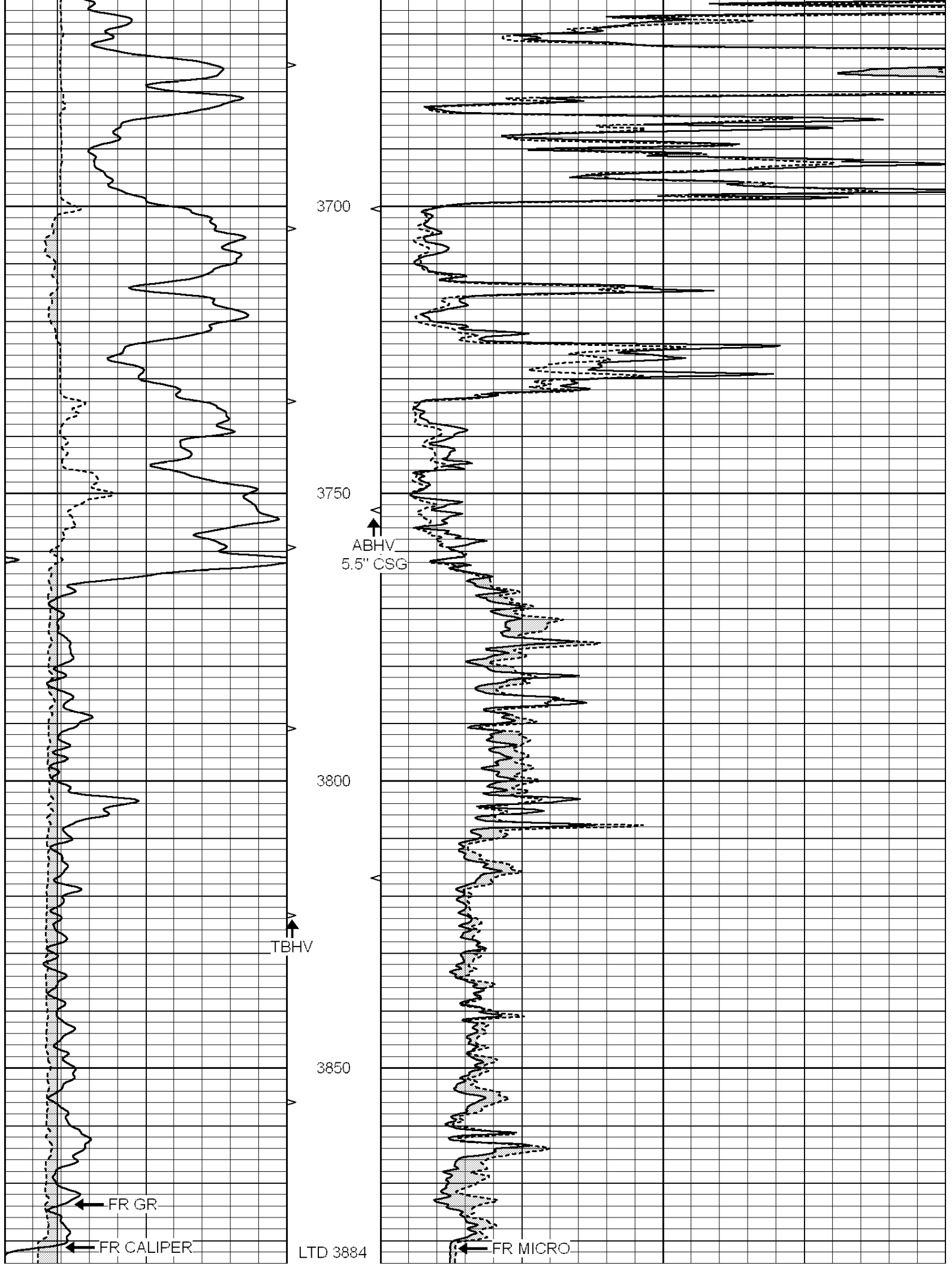
Comments

THANK YOU FOR USING NABORS COMPLETION & PRODUCTION SVCS. (785) 628-6395
DIRECTIONS: PAWNEE ROCK, KS. - WEST ON RD. T - NORTH 1 1/2 ON 90TH RD. - EAST INTO

0	GAMMA RAY (GAPI)	150	ABHV	0	MEL1.5 (Ohm-m)	40
6	CALIPER (in)	16	10 (ft3)	0 0	MEL2.0 (Ohm-m)	40
			TBHV			
			0 (ft3)			







3700

3750

3800

3850

ABHV
5.5" CSG

TBHV

FR GR

FR CALIPER

LTD 3884

FR MICRO

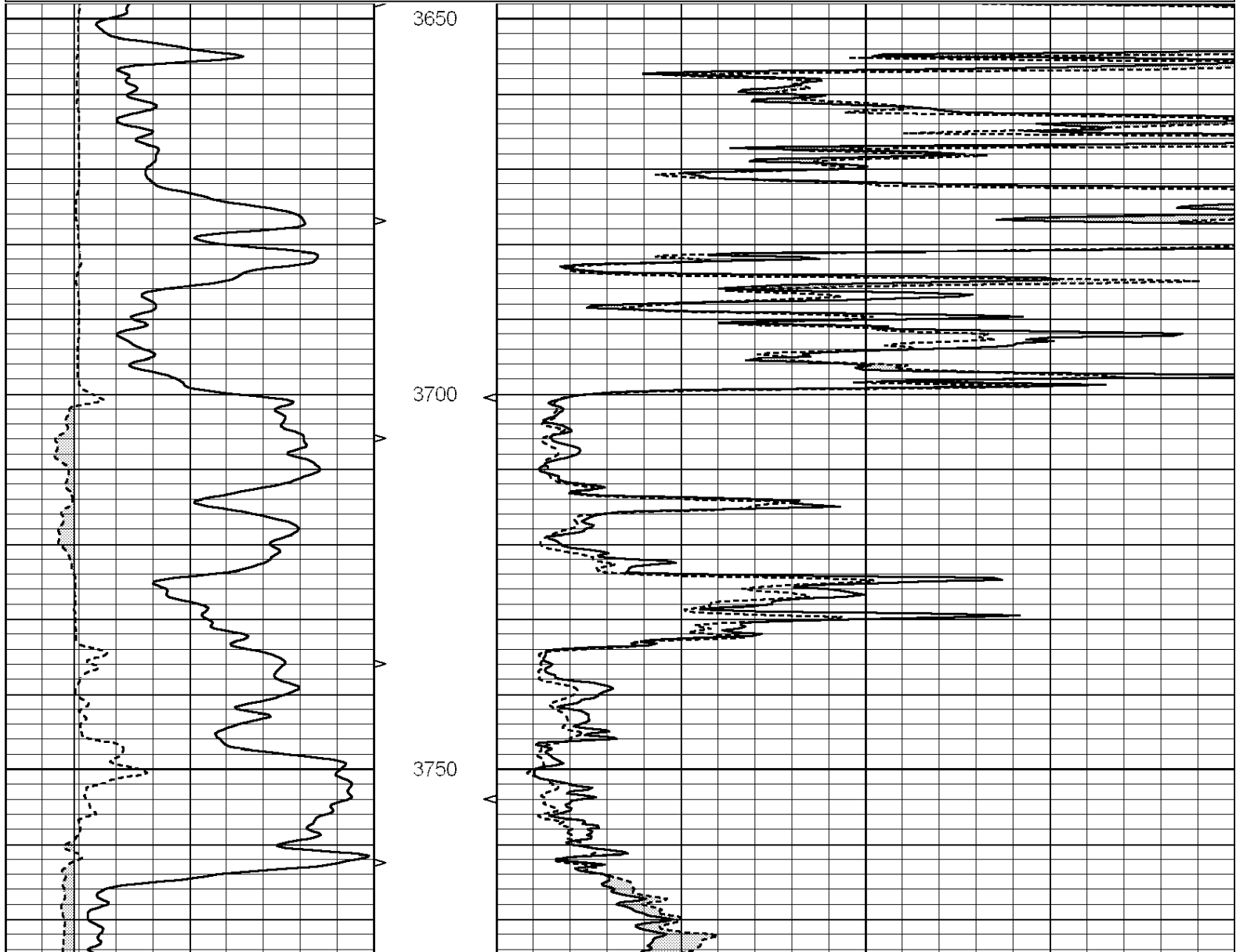
0	GAMMA RAY (GAPI)	150	ABHV	0	MEL1.5 (Ohm-m)	40
6	CALIPER (in)	16	10 (ft3)	0 0	MEL2.0 (Ohm-m)	40
			TBHV			
			0 (ft3)	10		

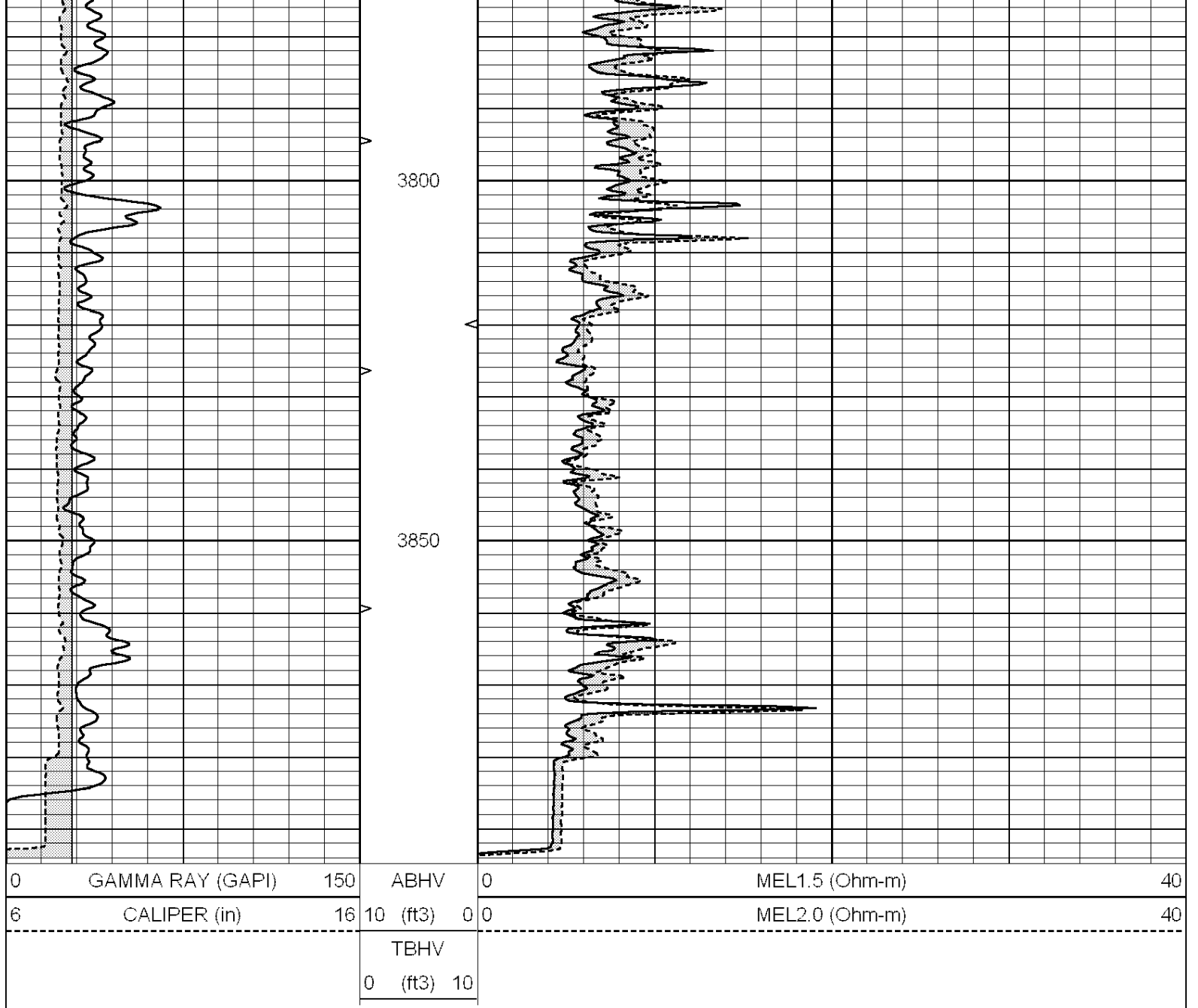


REPEAT SECTION

Database File: 011253ddn.db
 Dataset Pathname: pass5.1
 Presentation Format: _micro
 Dataset Creation: Wed Jun 12 14:25:03 2013 by Calc Open-Cased 090629
 Charted by: Depth in Feet scaled 1:240

0	GAMMA RAY (GAPI)	150	ABHV	0	MEL1.5 (Ohm-m)	40
6	CALIPER (in)	16	10 (ft3)	0 0	MEL2.0 (Ohm-m)	40
			TBHV			
			0 (ft3)	10		





Calibration Report

Database File: 011253ddn.db
 Dataset Pathname: pass6.2
 Dataset Creation: Wed Jun 12 14:46:28 2013 by Calc Open-Cased 090629

MICRO Calibration Report

Serial Number: MICRO6
 Tool Model: PROBE
 Performed: Fri May 03 14:17:57 2013

Caliper Calibration: Gain=5.542 Offset=-1.370

	Low Cal	High Cal
References	8.000	14.000
Readings	1.431	2.513

1.5" Calibration: Gain=45.075 Offset=-0.700

	Low Cal	High Cal
References	0.000	20.000
Readings	0.004	1.196

2" Calibration:

Gain=47.041

Offset=-0.600

References

Low Cal

High Cal

Readings

0.000

20.000

0.006

0.913

Gamma Ray Calibration Report

Serial Number:

#8

Tool Model:

OPEN

Performed:

Mon Jun 13 16:56:43 2011

Calibrator Value:

150.0

GAPI

Background Reading:

0.0

cps

Calibrator Reading:

175.0

cps

Sensitivity:

0.8371

GAPI/cps