



**COMPLETION  
& PRODUCTION  
SERVICES CO.**

**COMPENSATED  
DENSITY/NEUTRON  
LOG**

Company CHARTER ENERGY INC.  
Well CJ & M "A" #2  
Field PAWNEE ROCK  
County PAWNEE  
State KANSAS

Company CHARTER ENERGY INC.  
Well CJ & M "A" #2  
Field PAWNEE ROCK  
County PAWNEE State KANSAS

Location: API # : 15-145-21723-00-00  
1,650' FSL & 1,065' FEL  
W2 - SW - NE - SE  
SEC 26 TWP 20S RGE 16W  
Permanent Datum GROUND LEVEL Elevation 2037  
Log Measured From KELLY BUSHING 7' A.G.L.  
Drilling Measured From KELLY BUSHING  
Elevation  
K.B. 2044  
D.F. 2042  
G.L. 2037

Date	6/12/13
Run Number	ONE
Depth Driller	3885
Depth Logger	3884
Bottom Logged Interval	3860
Top Log Interval	3250
Casing Driller	8 5/8" @ 1072
Casing Logger	1074
Bit Size	7 7/8
Type Fluid in Hole	CHEMICAL MUD
Density / Viscosity	9.1/56
pH / Fluid Loss	11.0/9.6
Source of Sample	FLOWLINE
Rim @ Meas. Temp	.40 @ 96F
Rmf @ Meas. Temp	.30 @ 96F
Rmc @ Meas. Temp	.14 @ 96F
Source of Rmf / Rmc	MEASURED
Rim @ BHT	.33 @ 115F
Time Circulation Stopped	2 HOURS
Time Logger on Bottom	
Maximum Recorded Temperature	110F
Equipment Number	680
Location	HAYS, KS.
Recorded By	IAN MABB
Witnessed By	WYATT URBAN

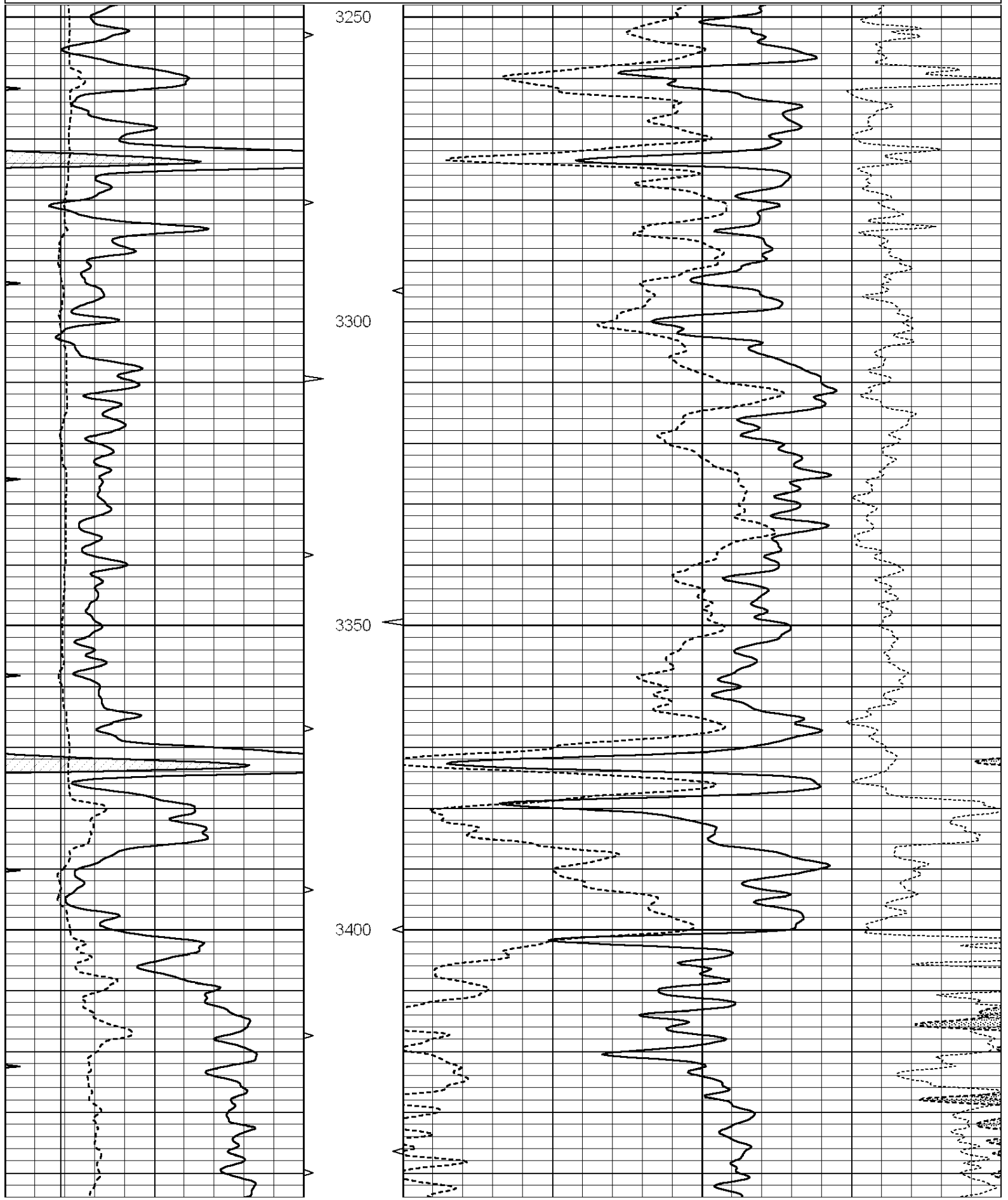
<<< Fold Here >>>

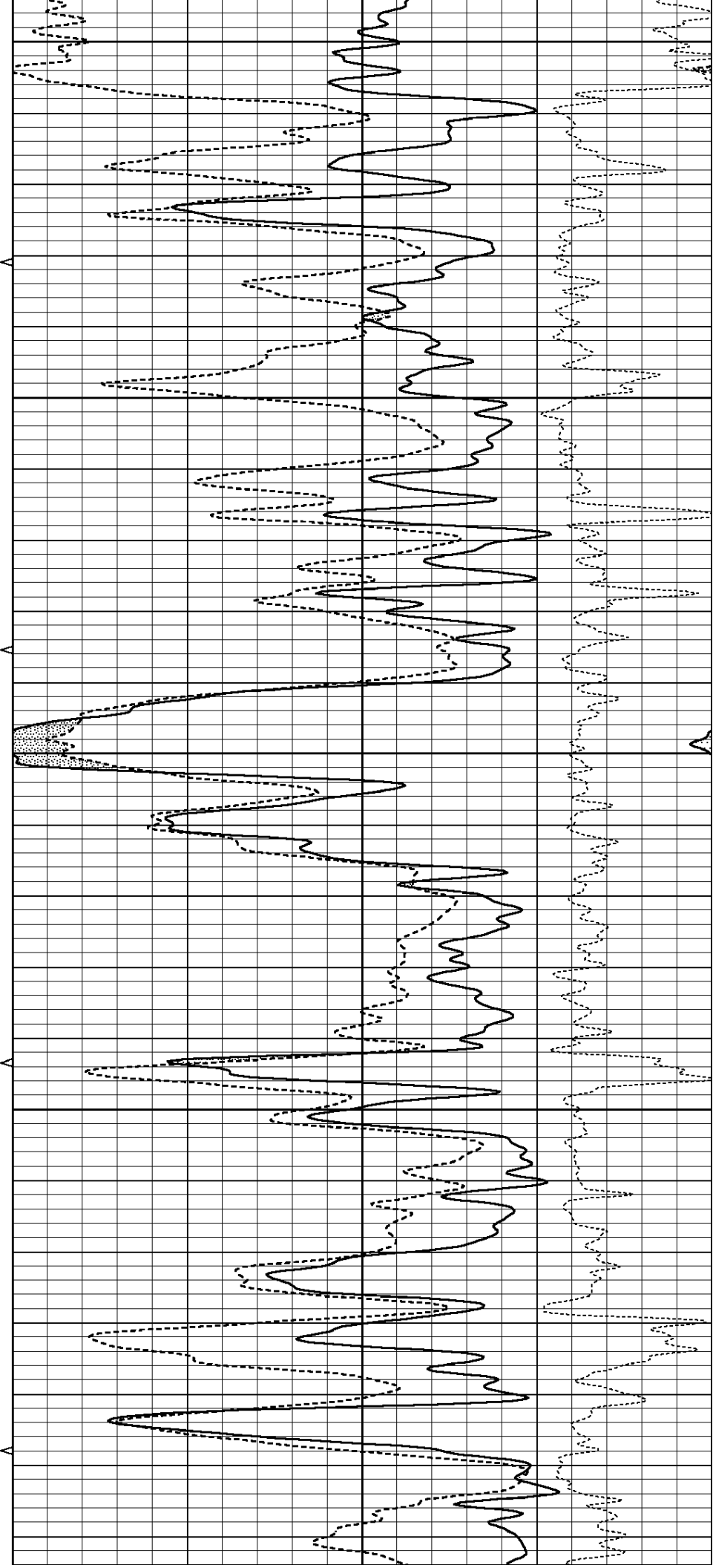
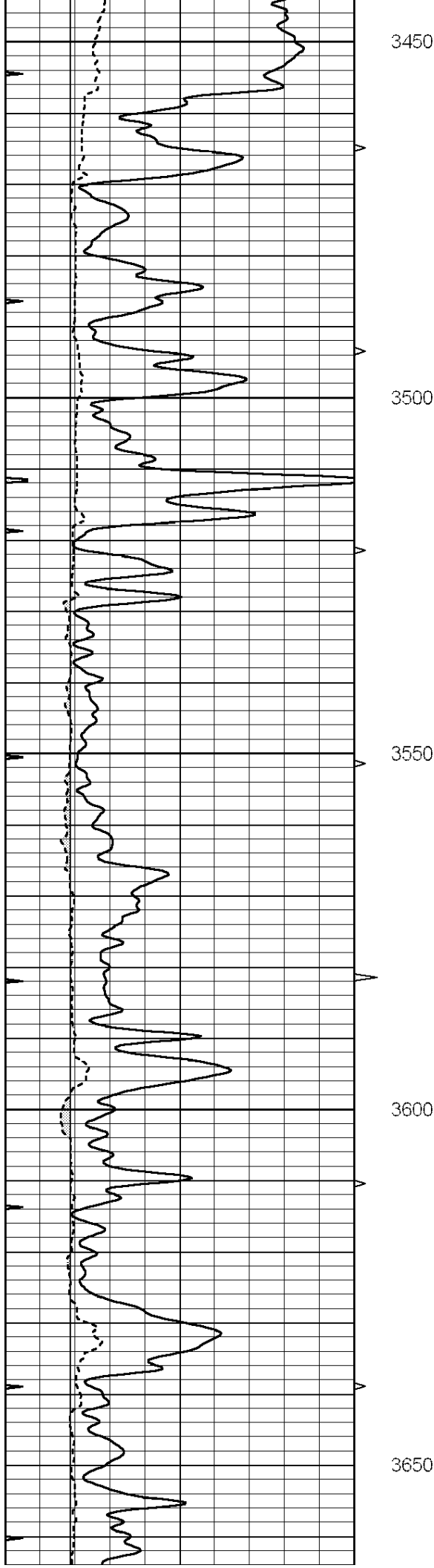
All interpretations are opinions based on inferences from electrical or other measurements and we cannot and do not guarantee the accuracy or correctness of any interpretation, and we shall not, except in the case of gross or willful negligence on our part, be liable or responsible for any loss, costs, damages, or expenses incurred or sustained by anyone resulting from any interpretation made by any of our officers, agents or employees. These interpretations are also subject to our general terms and conditions set out in our current Price Schedule.

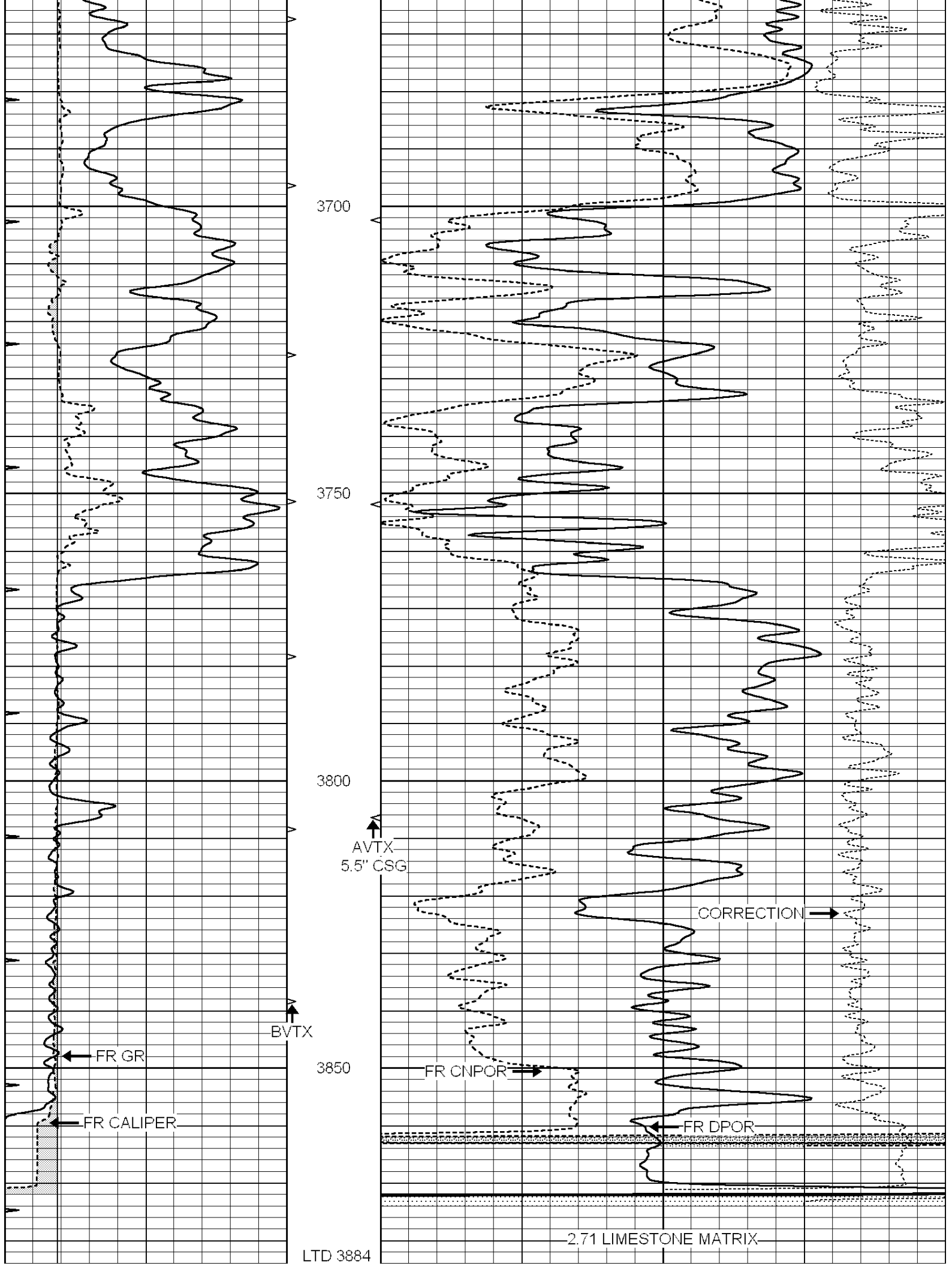
**Comments**

THANK YOU FOR USING NABORS COMPLETION & PRODUCTION SVCS. (785) 628-6395  
DIRECTIONS: PAWNEE ROCK, KS. - WEST ON RD. T - NORTH 1 1/2 ON 90TH RD. - EAST INTO

0	GAMMA RAY (GAPI)	150	AVTX	30	COMPENSATED DENSITY (pu)	-10
6	CALIPER (in)	16	10 (ft3)	0 30	COMPENSATED NEUTRON (pu)	-10
0	MINMK	20	BVTX		-0.25 CORRECTION (g/cc)	0.25
			0 (ft3)	10		







3700

3750

3800

3850

AVTX  
5.5" CSG

BVTX

FR GR

FR CALIPER

FR CNPOR

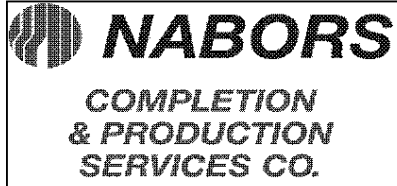
CORRECTION

FR DPOR

2.71 LIMESTONE MATRIX

LTD 3884

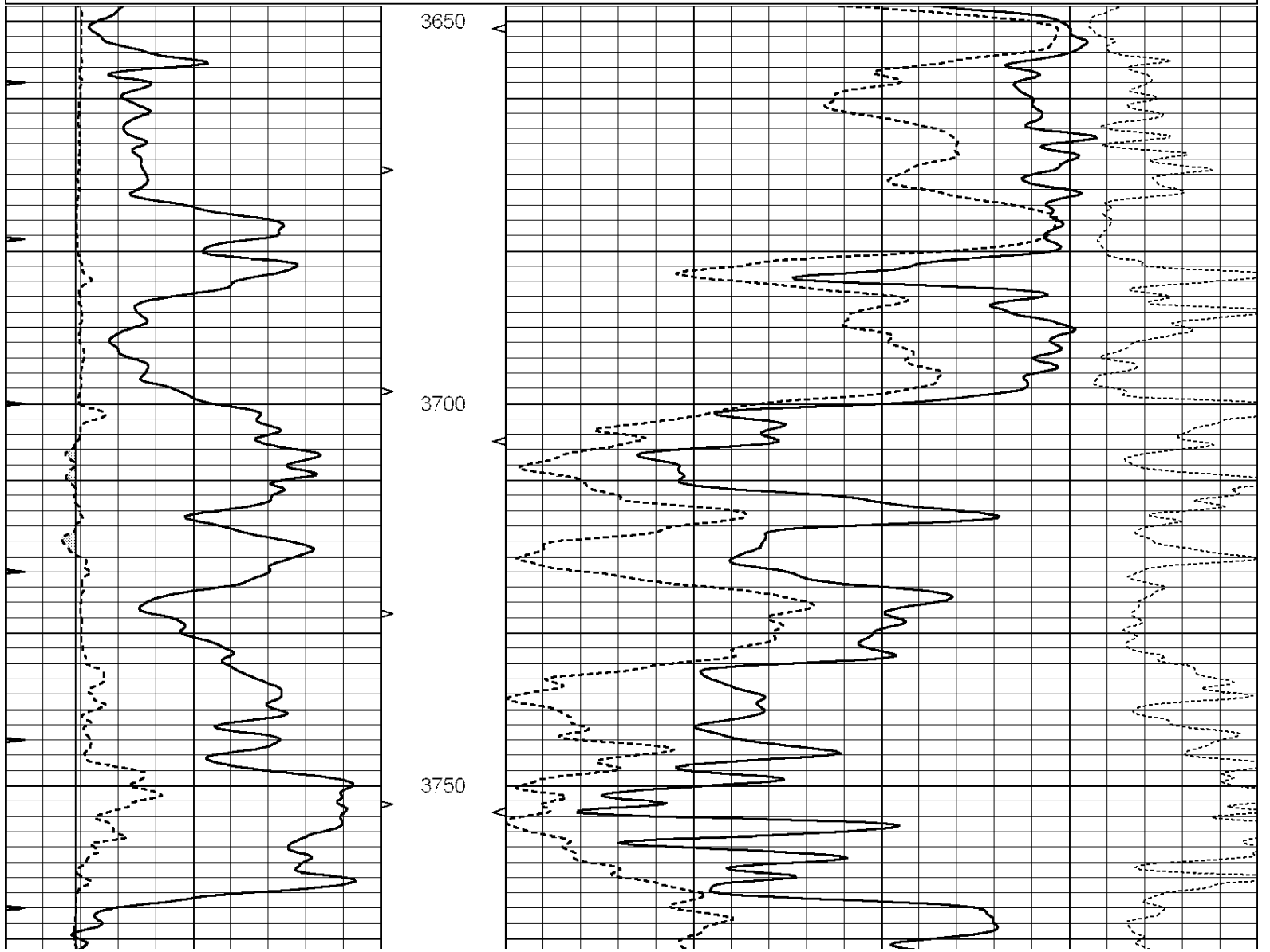
0	GAMMA RAY (GAPI)	150	AVTX	30	COMPENSATED DENSITY (pu)	-10
6	CALIPER (in)	16	10 (ft3)	0 30	COMPENSATED NEUTRON (pu)	-10
0	MINMK	20	BVTX		-0.25 CORRECTION (g/cc)	0.25
			0 (ft3)	10		

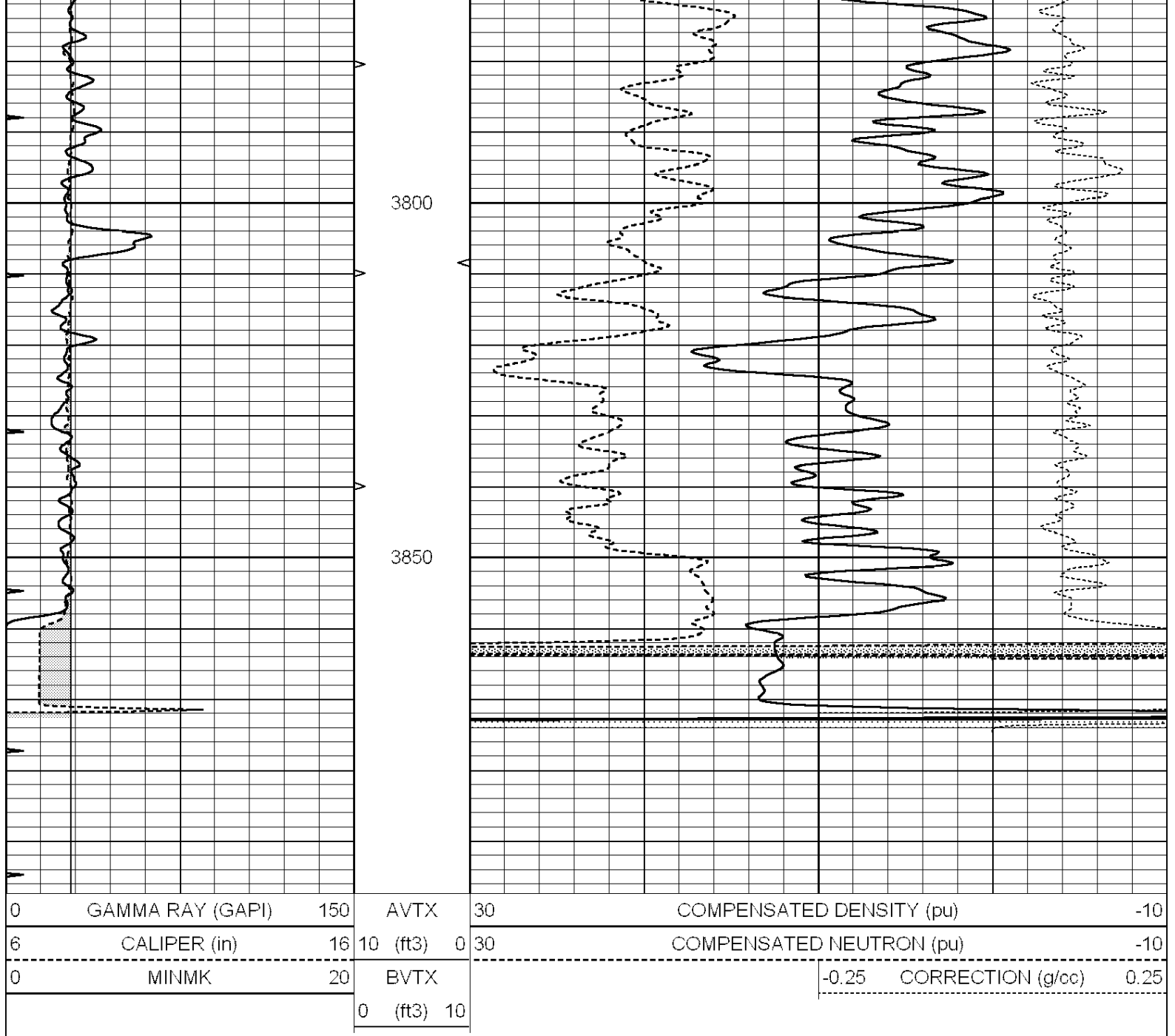


# REPEAT SECTION

Database File: 011253ddn.db  
 Dataset Pathname: pass2.4  
 Presentation Format: \_den\_neu  
 Dataset Creation: Wed Jun 12 12:38:09 2013 by Calc Open-Cased 090629  
 Charted by: Depth in Feet scaled 1:240

0	GAMMA RAY (GAPI)	150	AVTX	30	COMPENSATED DENSITY (pu)	-10
6	CALIPER (in)	16	10 (ft3)	0 30	COMPENSATED NEUTRON (pu)	-10
0	MINMK	20	BVTX		-0.25 CORRECTION (g/cc)	0.25
			0 (ft3)	10		





### Calibration Report

Database File: 011253ddn.db  
 Dataset Pathname: pass3.1  
 Dataset Creation: Wed Jun 12 13:03:43 2013 by Calc Open-Cased 090629

### Dual Induction Calibration Report

Serial-Model: PROBE8-DILG  
 Surface Cal Performed: Fri Aug 01 06:33:19 2008  
 Downhole Cal Performed: Mon Jul 28 11:08:27 2008  
 After Survey Verification Performed: Mon Jul 28 11:08:27 2008

#### Surface Calibration

Loop:	Readings			References			Results	
	Air	Loop	V	Air	Loop	mmho/m	m	b
Deep	0.015	0.648	V	0.000	400.000	mmho/m	632.616	-9.730
Medium	0.029	0.796	V	0.000	464.000	mmho/m	605.049	-17.680
Internal:	Zero	Cal		Zero	Cal		m	b

Deep	0.017	0.657	V	0.000	400.000	mmho/m	625.153	-10.619
Medium	0.016	0.757	V	0.000	464.000	mmho/m	625.992	-9.739

Downhole Calibration								
	Readings			References			Results	
	Zero	Cal		Zero	Cal		m'	b'
Deep	0.000	0.000	mmho/m	2.011	405.777	mmho/m	1.000	0.000
Medium	0.000	0.000	mmho/m	7.590	503.393	mmho/m	1.000	0.000
LL3		7.500	V		1500.000	Ohm-m		
		0.000	V		20.000	Ohm-m		
		-7.200	V		3800.000	mmho-m		

After Survey Verification								
	Readings			Targets			Results	
	Zero	Cal		Zero	Cal		m'	b'
Deep	0.000	0.000	mmho/m	0.000	0.000	mmho/m	0.000	0.000
Medium	0.000	0.000	mmho/m	0.000	0.000	mmho/m	0.000	0.000
LL3		1.000	Ohm-m		1.000	Ohm-m		
		0.000	Ohm-m		0.000	Ohm-m		
		1.000	mmho-m		1.000	mmho-m		

Compensated Density Calibration Report

Serial-Model:	GEAR4-GEARHART
Source / Verifier:	143 / 143
Master Calibration Performed:	Mon Mar 19 19:07:19 2012

Master Calibration						
	Density		Far Detector		Near Detector	
Magnesium	1.710	g/cc	1015.91	497.51	cps	
Aluminum	2.600	g/cc	227.67	350.20	cps	
Spine Angle = 76.79			Density/Spine Ratio = 0.579			
	Size		Reading			
Small Ring	8.00	in	3.21	V		
Large Ring	14.00	in	5.46	V		

Compensated Neutron Calibration Report

Serial Number:	6I
Tool Model:	G

CALIBRATION						
Detector	Readings		Target		Normalization	
Short Space	1.00	cps	1.00	cps	1.0000	
Long Space	1.00	cps	1.00	cps	1.0000	

Gamma Ray Calibration Report

Serial Number:	#8
Tool Model:	OPEN
Performed:	Mon Jun 13 16:56:43 2011
Calibrator Value:	150.0 GAPI
Background Reading:	0.0 cps
Calibrator Reading:	175.0 cps
Sensitivity:	0.8371 GAPI/cps

U.S. DEPARTMENT OF JUSTICE

FEDERAL BUREAU OF INVESTIGATION

WASHINGTON, D. C. 20535

MEMORANDUM FOR THE DIRECTOR

FROM: SAC, NEW YORK (100-123456)

SUBJECT: [REDACTED]

[REDACTED]

[REDACTED]

[REDACTED]

[REDACTED]

[REDACTED]

[REDACTED]

[REDACTED]

[REDACTED]

[REDACTED]

[REDACTED]

[REDACTED]

[REDACTED]