

HALLIBURTON

MICROLOG

COMPANY	OXY USA INC.		
WELL	GARDEN CITY H-11		
FIELD	GARDEN CITY		
COUNTY	FINNEY		
STATE	KANSAS		
COMPANY	OXY USA INC.	WELL	GARDEN CITY H-11
FIELD	GARDEN CITY	COUNTY	FINNEY
STATE	KANSAS	API No.	15055221910000
Location	620' FSL & 342' FWL NE SW SW SW		Other Services: ACRT DSNT, SDLT BSAT
Sect.	23	Twp.	23S
Rge.	34W		
Elev.	2941.0 ft		
D.F.	2951.0 ft		
G.L.	2941.0 ft		

Permanent Datum	GL	Elev.	2941.0 ft
Log measured from	KB	D.F.	2951.0 ft
Drilling measured from	KB	G.L.	2941.0 ft

Date	11-Jan-13		
Run No.	ONE		
Depth - Driller	5090.00 ft		
Depth - Logger	5024.0 ft		
Bottom - Logged Interval	4980.0 ft		
Top - Logged Interval	3700.0 ft		
Casing - Driller	8.625 in @ 1800.0 ft		
Casing - Logger	1799.0 ft @		
Bit Size	7.875 in @		
Type Fluid in Hole	WATER BASED MUD @		
Density	9.4 ppg	Viscosity	32.00 s/qt
PH	10.40 pH	Fluid Loss	15.6 cplm
Source of Sample	MUD PIT		
Rm @ Meas. Temperature	0.470 ohmm	Rmc	75.00 degF @
Rmf @ Meas. Temperature	0.39 ohmm	Rmc	75.00 degF @
Rmc @ Meas. Temperature	0.790 ohmm	Rmc	75.00 degF @
Source Rmf	MEASURED	Rmc	MEASURED
Rm @ BHT	0.29 ohmm	Rmc	125.0 degF @
Time Since Circulation	8.0 hr		
Time on Bottom	11-Jan-13 14:22		
Max. Rec. Temperature	125.0 degF	Location	5024.0 ft @
Equipment	1054696	Location	LIBERAL
Recorded By	J. BOLLOW		
Witnessed By	M. BONNER		

Fold here

Service Ticket No.: 900131775 API Serial No.: 15055221910000 PGM Version: WL INSITE R3.6.0 (Build 3)

CHANGE IN MUD TYPE OR ADDITIONAL SAMPLE				RESISTIVITY SCALE CHANGES			
Date	Sample No.			Type Log	Depth	Scale Up Hole	Scale Down Hole
Depth-Driller							
Type Fluid in Hole							
Density	Viscosity						
Ph	Fluid Loss						
Source of Sample				RESISTIVITY EQUIPMENT DATA			
Rm @ Meas. Temp	@	@		Run No.	Tool Type & No.	Pad Type	Tool Pos.
Rmf @ Meas. Temp.	@	@		ONE	MICROLOG	RUBBER	ADJ
Rmc @ Meas. Temp.	@	@			11014296		
Source Rmf	Rmc						
Rm @ BHT	@	@					
Rmf @ BHT	@	@					
Rmc @ BHT	@	@					
EQUIPMENT DATA							
GAMMA		ACOUSTIC		DENSITY		NEUTRON	
Run No.	ONE	Run No.		Run No.		Run No.	
Serial No.	11048627	Serial No.		Serial No.		Serial No.	
Model No.	GTET	Model No.		Model No.		Model No.	
Diameter	3.625"	No. of Cent.		Diameter		Diameter	
Detector Model No.	GTET	Spacing		Log Type		Log Type	
Type	SCINT			Source Type		Source Type	
Length	8'	LSA [Y/N]		Serial No.		Serial No.	
Distance to Source	10'	FWDA [Y/N]		Strength		Strength	
LOGGING DATA							
GENERAL		GAMMA		ACOUSTIC		DENSITY	

Run No.	GENERAL		Speed ft/min	GAMMA		ACOUSTIC		Matrix	DENSITY		Matrix	NEUTRON	
	Depth			Scale		Scale			Scale			Scale	
	From	To		L	R	L	R		L	R		L	R
ONE	5024	3700	REC	0	150								

DIRECTIONAL INFORMATION

Maximum Deviation @ KOP @

Remarks: ANNULAR HOLE VOLUME CALCULATED FOR 5.5-INCH CASING

CHLORIDES REPORTED AT 16,000 MG/L

GTET-DSNT-SDLT-BSAT-ACRT RUN IN COMBINATION

TODAY'S CREW: B. TERRELL & F. VILLA

THANK YOU FOR CHOOSING HALLIBURTON ENERGY SOURCES LIBERAL, KS. 620-624-8123

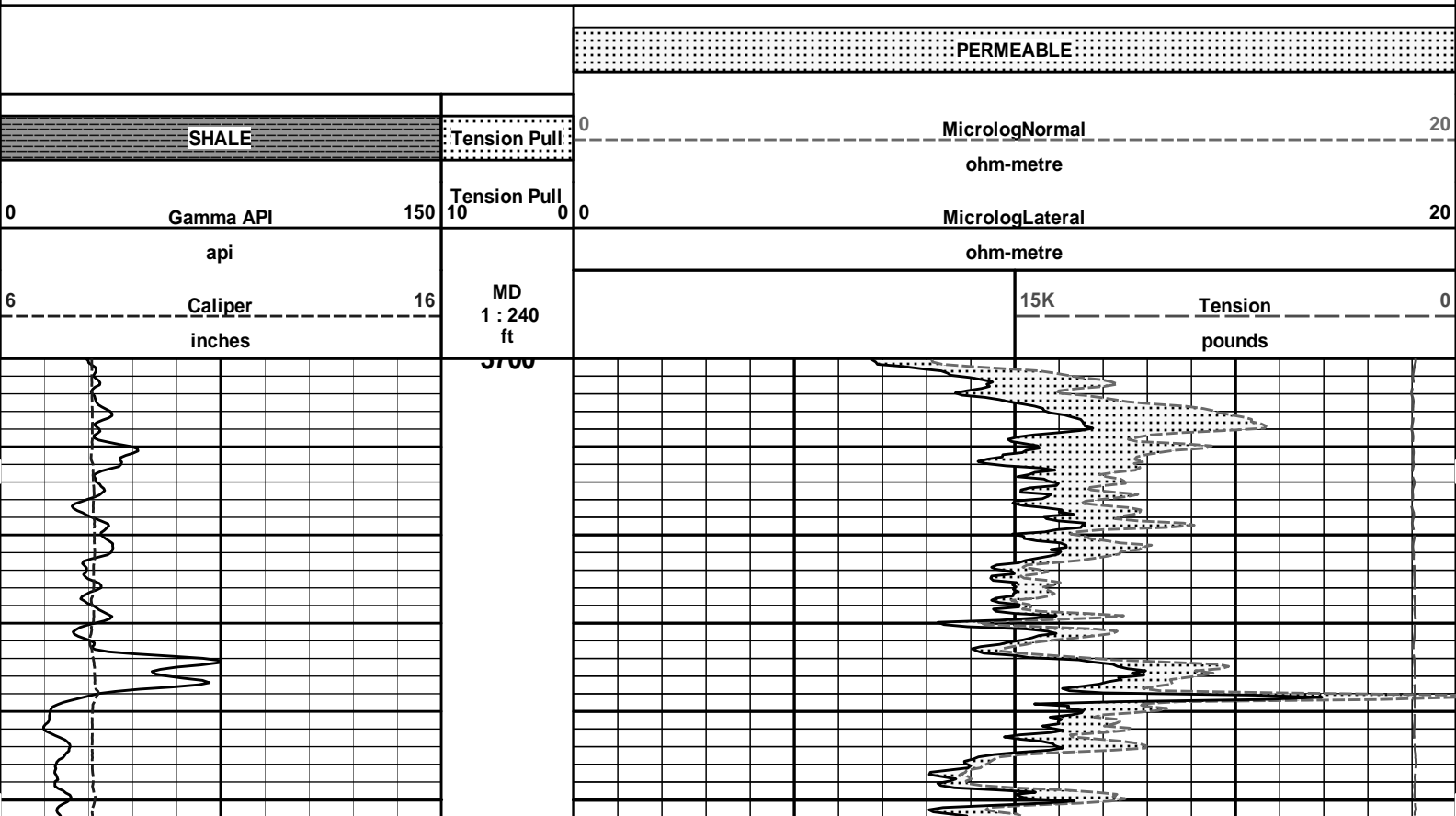
HALLIBURTON DOES NOT GUARANTEE THE ACCURACY OF ANY INTERPRETATION OF THE LOG DATA, CONVERSION OF LOG DATA TO PHYSICAL ROCK PARAMETERS OR RECOMMENDATIONS WHICH MAY BE GIVEN BY HALLIBURTON PERSONNEL OR WHICH APPEAR ON THE LOG OR IN ANY OTHER FORM. ANY USER OF SUCH DATA, INTERPRETATIONS, CONVERSIONS, OR RECOMMENDATIONS AGREES THAT HALLIBURTON IS NOT RESPONSIBLE EXCEPT WHERE DUE TO GROSS NEGLIGENCE OR WILLFUL MISCONDUCT, FOR ANY LOSS, DAMAGES, OR EXPENSES RESULTING FROM THE USE THEREOF.

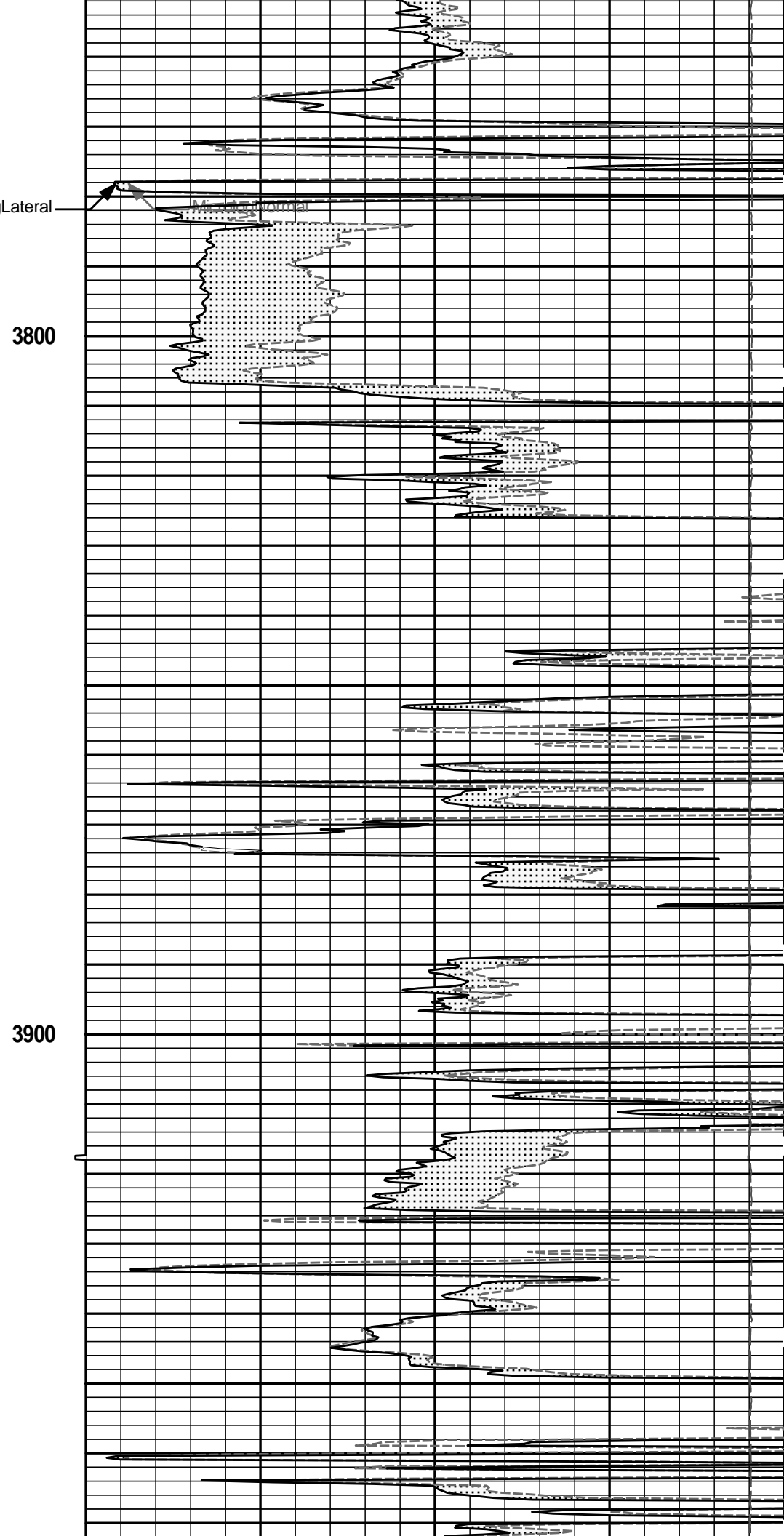
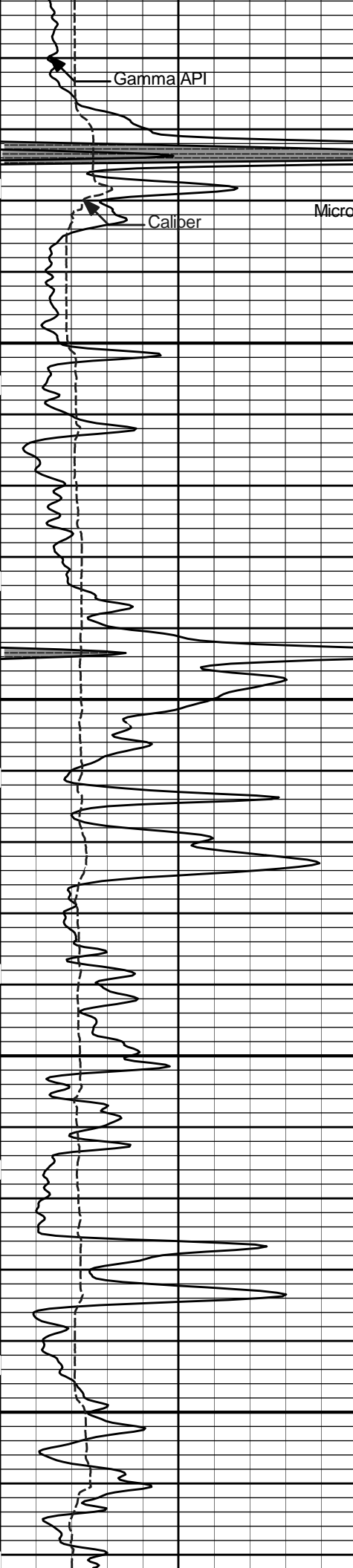
HALLIBURTON

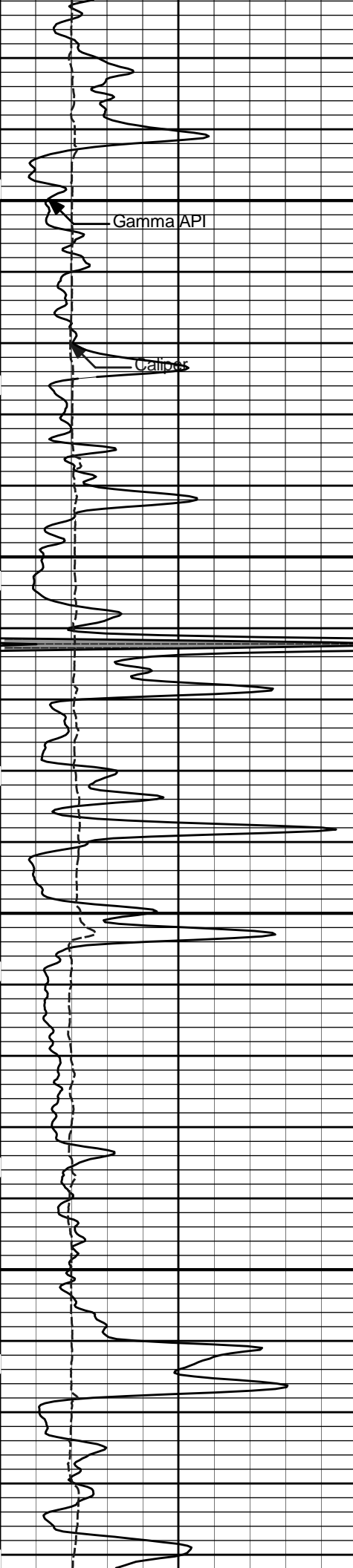


Plot Time: 11-Jan-13 16:33:07
 Plot Range: 3700 ft to 5028.83 ft
 Data: GARDEN_CITY_H11\Well Based\DETAIL\
 Plot File: \\LOCAL\GARDEN_CITY_H11\0001 SP-GTET-DSN-SDL-FLEX-BSAT-ACRT-CHMICRO\Microlog_IQ_5_main_lib

5 INCH MAIN LOG





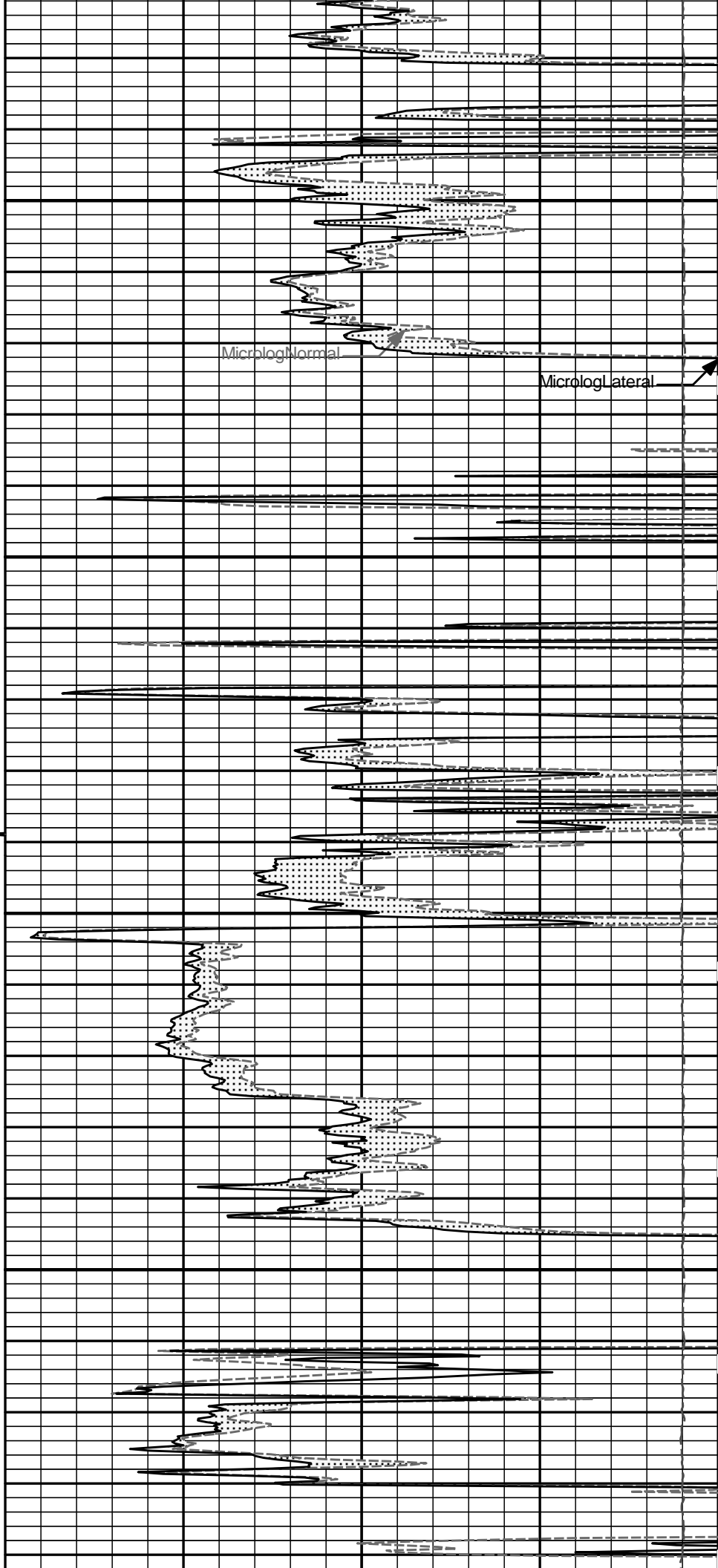


Gamma API

Caliper

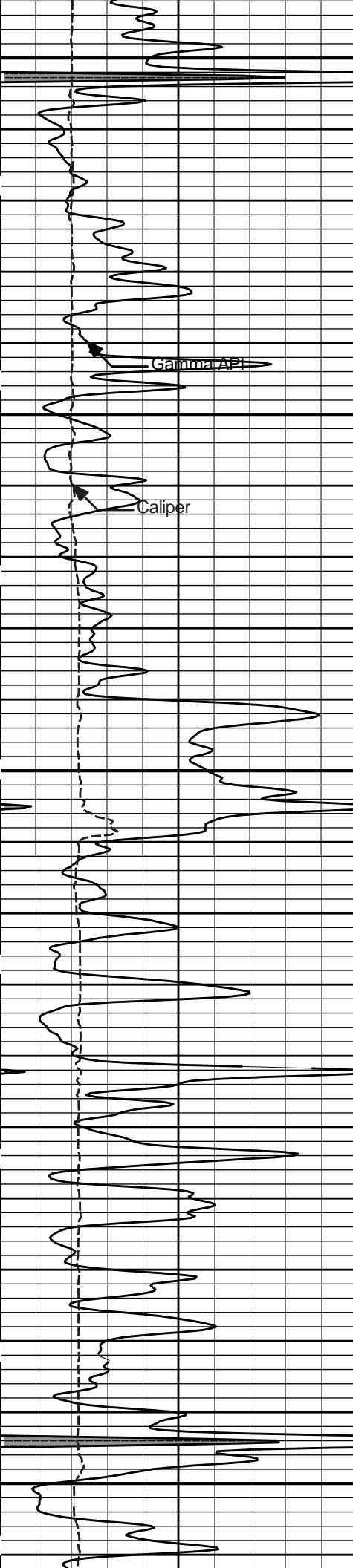
4000

4100



MicrologNormal

MicrologLateral



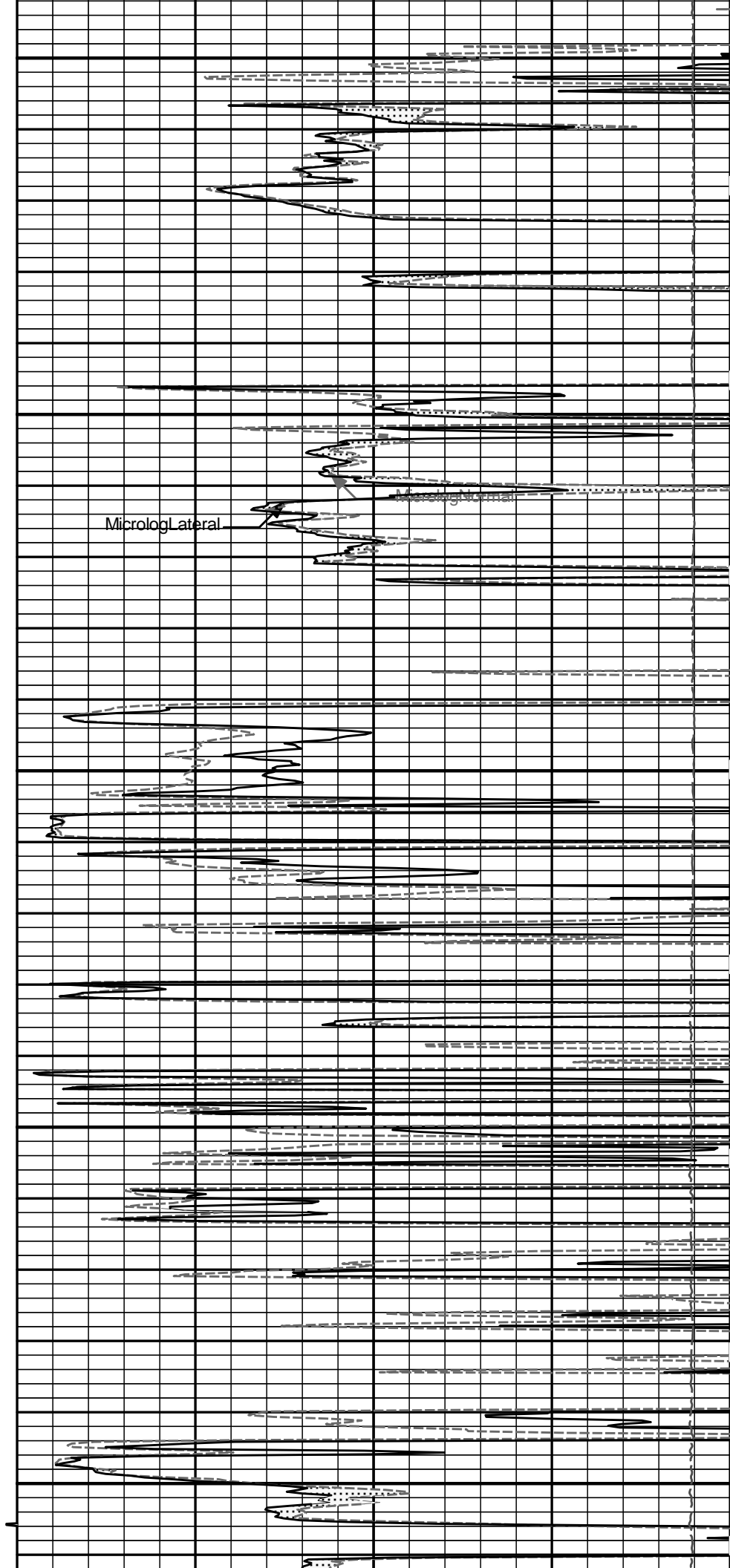
4200

Gamma Ray

Caliper

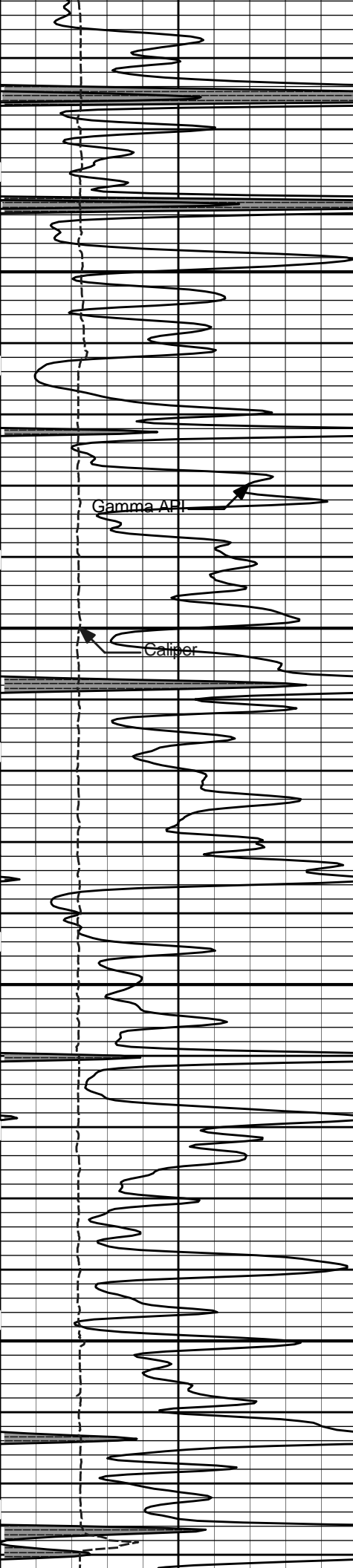
4300

4400



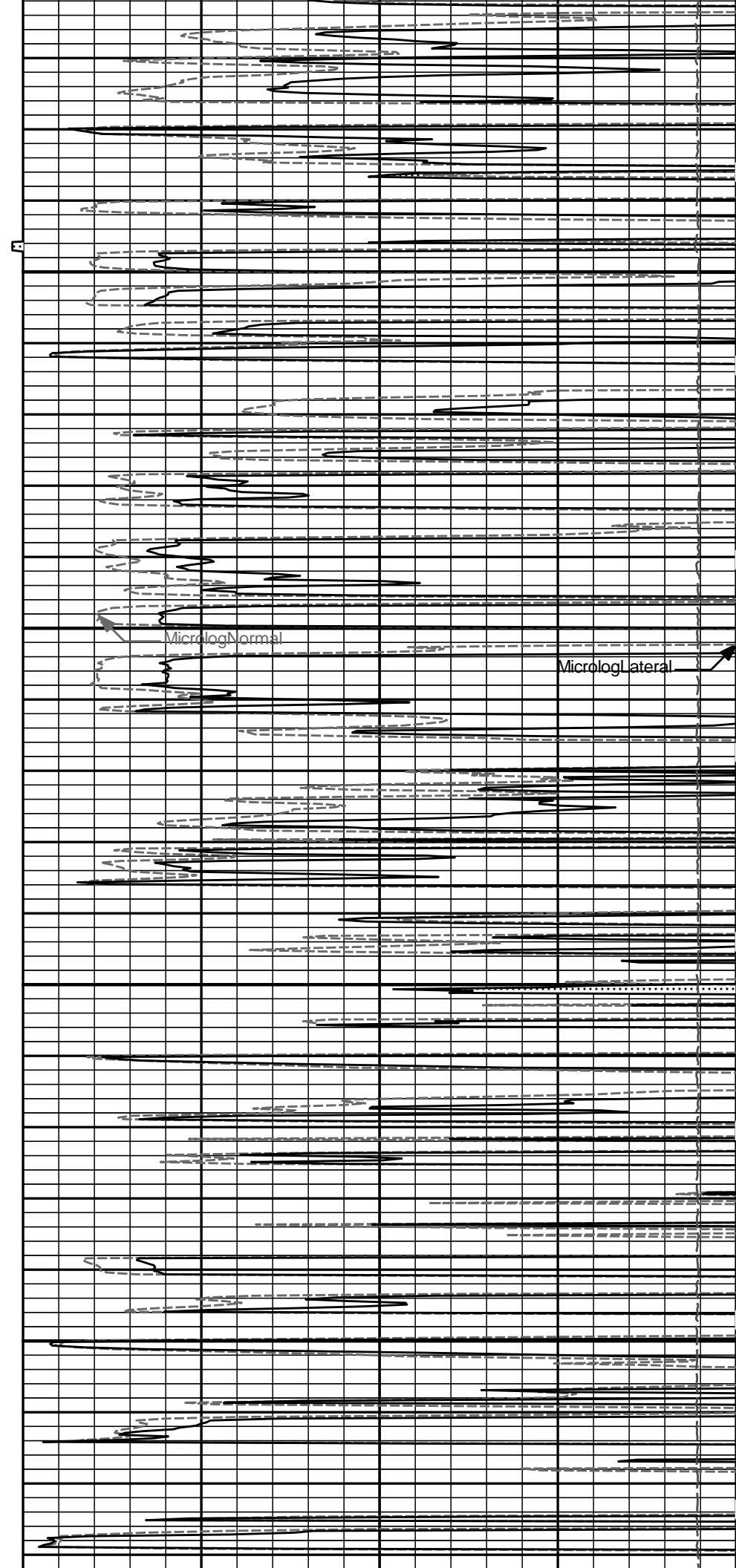
Microlog Lateral

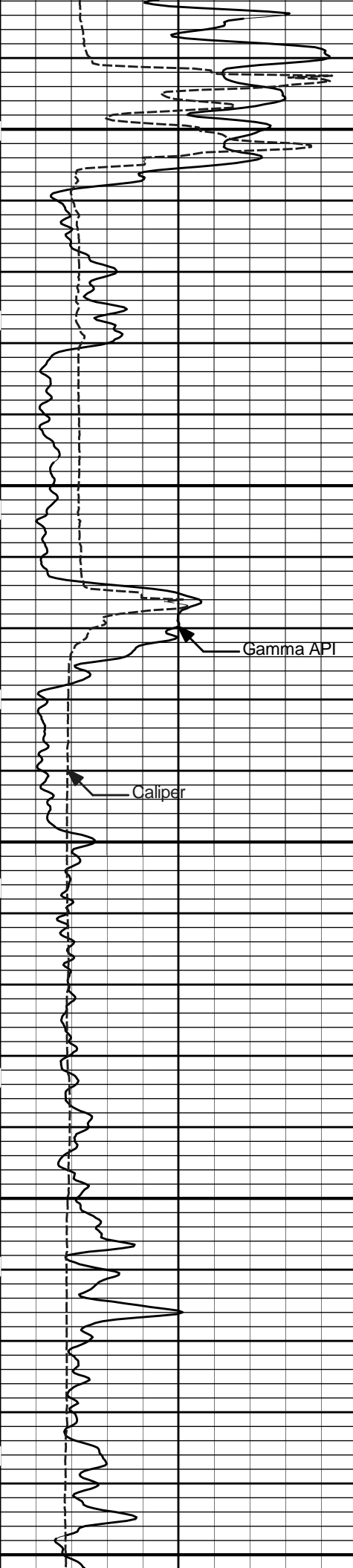
Logging Normal



4500

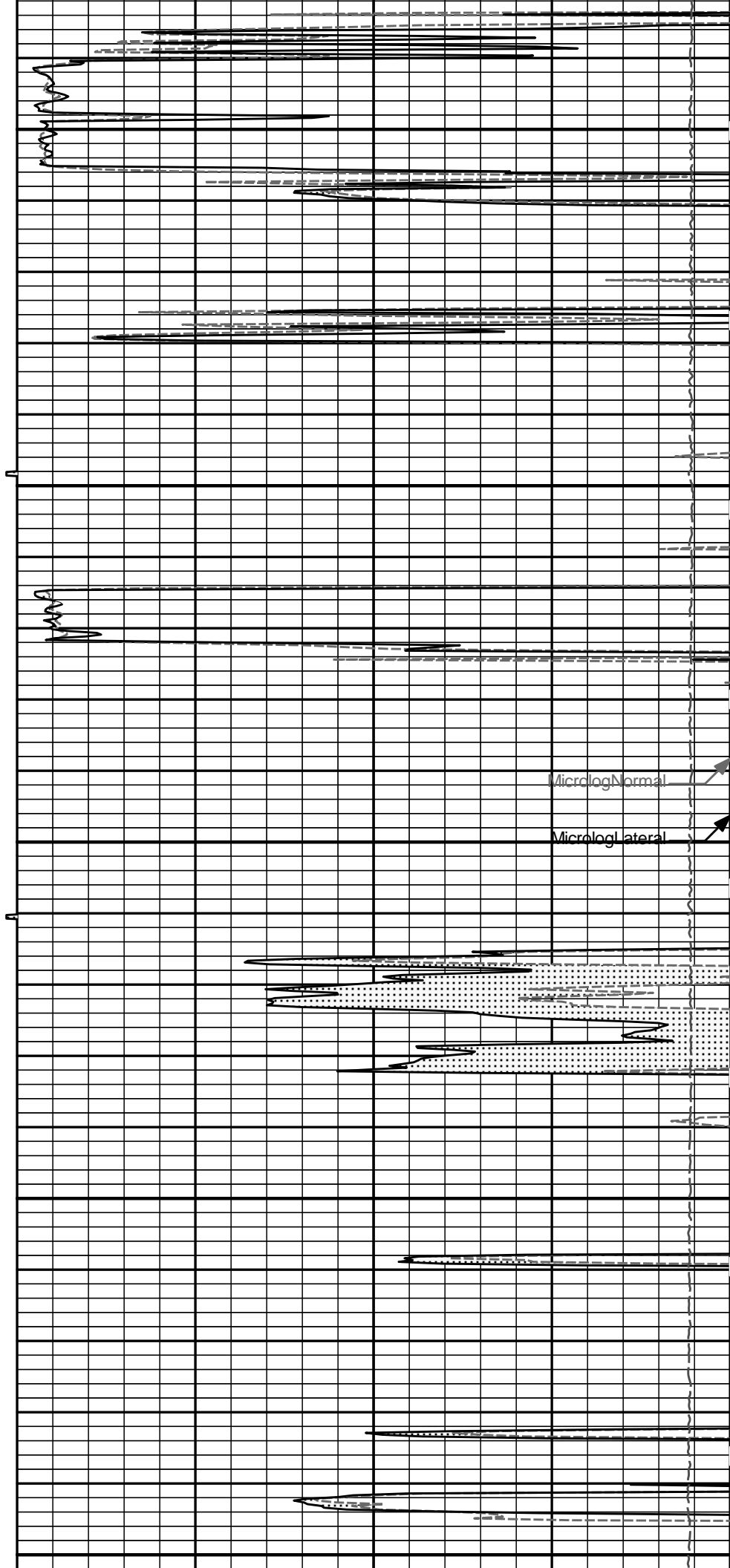
4600





4700

4800



MicrologNormal

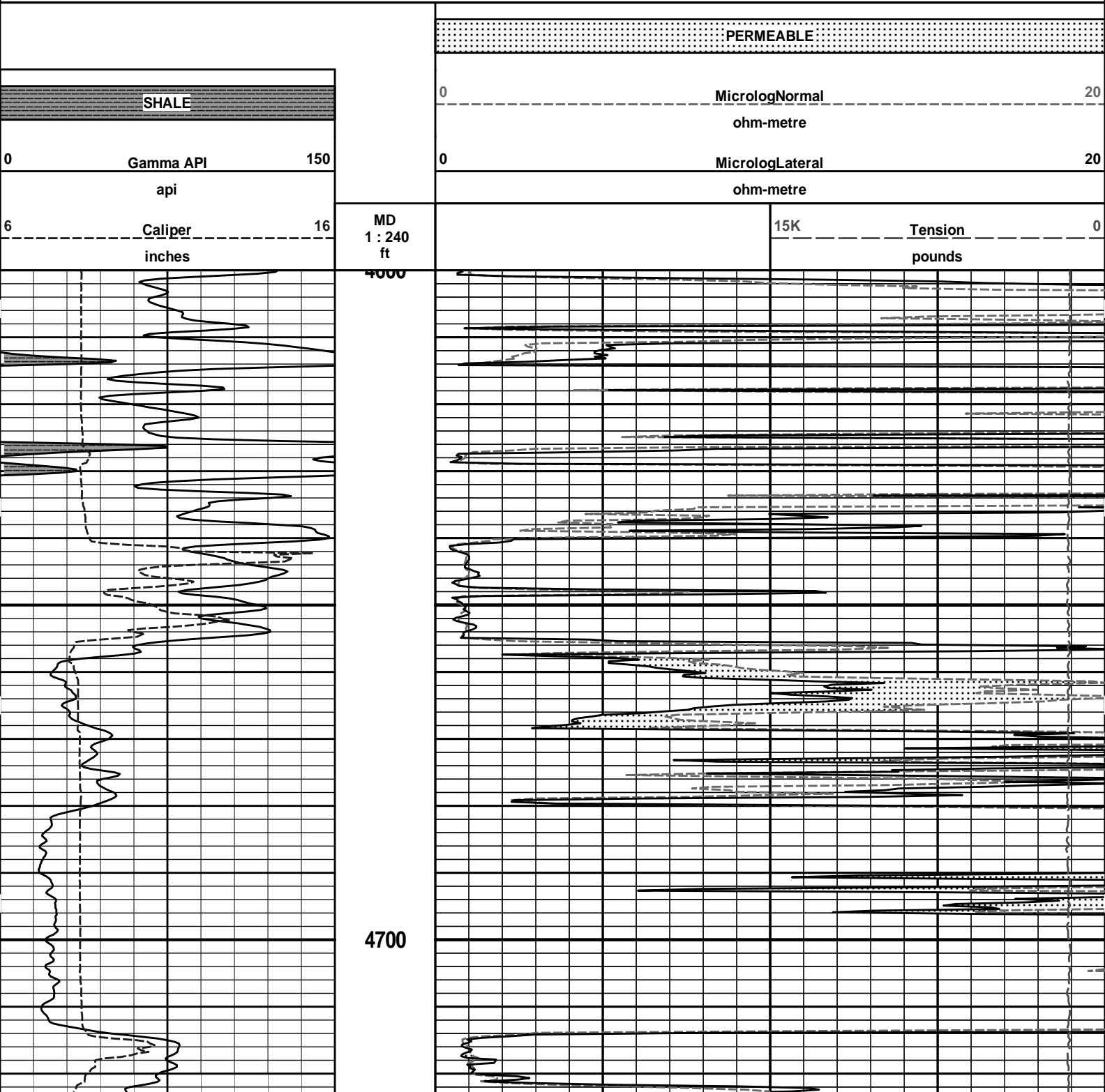
MicrologLateral

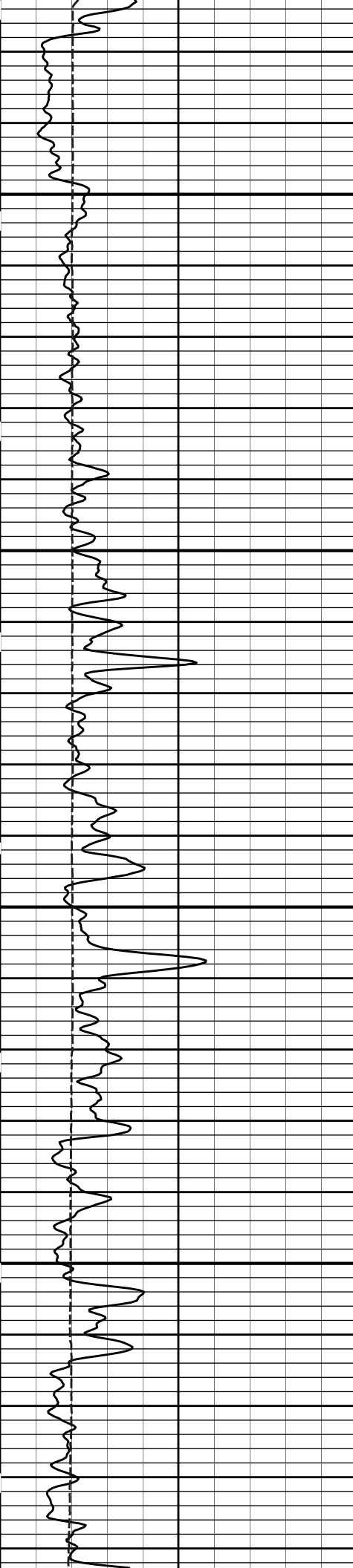
5 INCH MAIN LOG

HALLIBURTON

Plot Time: 11-Jan-13 16:33:09
Plot Range: 4600 ft to 5036.08 ft
Data: GARDEN_CITY_H11\Well Based\REPEAT\
Plot File: \\LOCAL\GARDEN_CITY_H11\0001 SP-GTET-DSN-SDL-FLEX-BSAT-ACRT-CHMICRO\Microlog_IQ_5_rep_lib

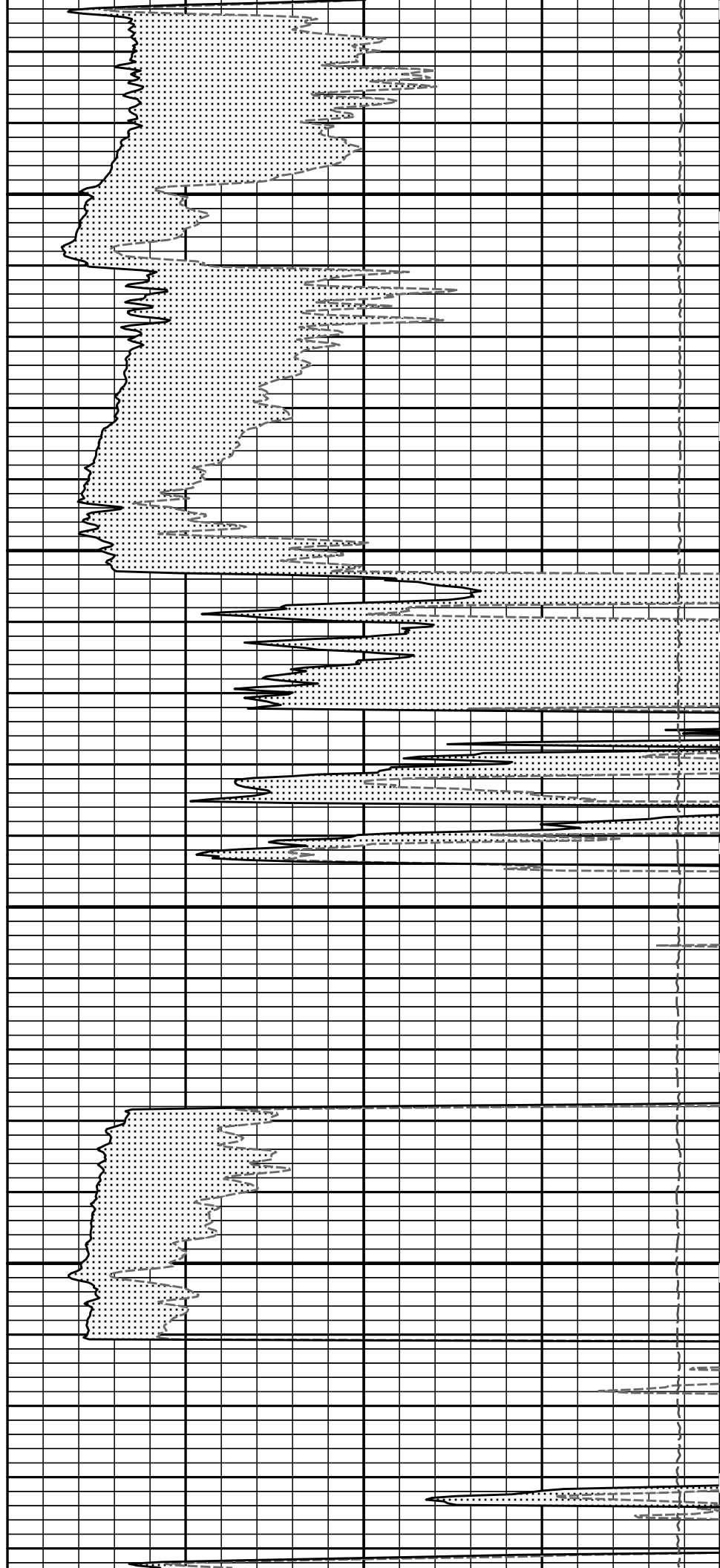
REPEAT SECTION





4800

4900



GTET-11048627
165.00 lbs

Ø 3.625 in →

8.52 ft

← GammaRay @ 64.23 ft

61.78 ft

DSN Decentralizer-
11019643
6.60 lbs

DSNT-11055304
174.00 lbs

Ø 5.000 in* →

Ø 3.625 in →

9.69 ft

← DSN Far @ 54.84 ft

← DSN Near @ 54.09 ft

52.09 ft

SDLT-11014296
360.00 lbs

SDLT Pad-10865884
65.00 lbs
Microlog Pad-11014296
8.00 lbs

Ø 4.500 in →

Ø 4.750 in* →

Ø 4.750 in* →

10.81 ft

Microlog @ 44.28 ft
SDL Caliper @ 44.09 ft
SDL @ 44.08 ft

41.28 ft

Flex Joint-001
140.00 lbs

Ø 3.625 in →

5.67 ft

35.61 ft

Centralizer 29-1
12.00 lbs

Ø 4.000 in* →

BSAT-10747683
300.00 lbs

Ø 3.625 in →

15.77 ft

← Sonic Receivers @ 27.09 ft

19.83 ft

ACRt Instrument-
1962
50.00 lbs

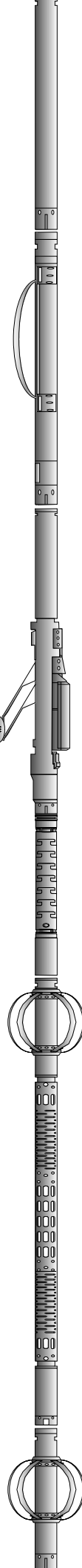
Centralizer 29-2
12.00 lbs

Ø 4.000 in* →

Ø 3.625 in →

5.03 ft

14.80 ft



ACRt Sonde-
11005909
200.00 lbs

Ø 3.625 in →

← Mud Resistivity @ 13.44 ft

← ACRt @ 9.46 ft

14.22 ft

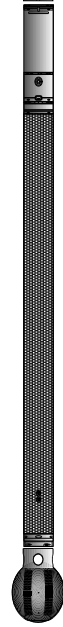
Cabbage Head-
TRK696
10.00 lbs

Ø 3.625 in ↙
Ø 6.000 in →

0.58 ft

0.58 ft

0.00 ft



Mnemonic	Tool Name	Serial Number	Weight (lbs)	Length (ft)	Accumulated Length (ft)	Max.Log. Speed (fpm)
CH_HOS	Hostile Cable Head with Load Cell	CH_696	37.50	3.03	74.03	300.00
SP	SP Sub	11441455	60.00	3.74	70.30	300.00
GTET	Gamma Telemetry Tool	11048627	165.00	8.52	61.78	60.00
DSNT	Dual Spaced Neutron	11055304	174.00	9.69	52.09	60.00
DCNT	DSN Decentralizer	11019643	6.60	5.13 *	55.42	300.00
SDLT	Spectral Density Tool	11014296	360.00	10.81	41.28	60.00
MICP	Microlog Pad	11014296	8.00	1.00 *	43.78	60.00
SDLP	Density Insite Pad	10865884	65.00	2.55 *	43.49	60.00
FLEX	Flex Joint	001	140.00	5.67	35.61	300.00
BSAT	Borehole Sonic Array Tool	10747683	300.00	15.77	19.83	60.00
OBCEN	Centralizer - 29 in.Overbody	1	12.00	2.42 *	32.77	300.00
ACRt	Array Compensated True Resistivity Instrument Section	I962	50.00	5.03	14.80	300.00
OBCEN	Centralizer - 29 in.Overbody	2	12.00	2.42 *	16.39	300.00
ACRt	Array Compensated True Resistivity Sonde Section	11005909	200.00	14.22	0.58	300.00
CBHD	Cabbage Head	TRK696	10.00	0.58	0.00	300.00
Total			1,600.10	77.06		

* Not included in Total Length and Length Accumulation.

Data: GARDEN_CITY_H11\0001 SP-GTET-DSN-SDL-FLEX-BSAT-ACRT-CHIDL Date: 11-Jan-13 12:44:48

HALLIBURTON

CALIBRATION REPORT

NATURAL GAMMA RAY TOOL SHOP CALIBRATION

Tool Name: GTET - 11048627

Reference Calibration Date: 15-Oct-12 10:58:20

Engineer: S. INGERSOLL

Calibration Date: 20-Dec-12 17:00:35

Software Version: WL INSITE R3.6.0 (Build 3)

Calibration Version: 1

Calibrator Source S/N: TB146

Calibrator API Reference:265.00 api

Equivalent Calibrator API Reference:269.6 api

Measurement	Measured	Calibrated	Units
Background	51.6	51.2	api
Background + Calibrator	323.1	320.9	api
Calibrator	271.5	269.6	api

NATURAL GAMMA RAY TOOL FIELD CALIBRATION

Tool Name: GTET - 11048627

Reference Calibration Date: 20-Dec-12 17:00:35

Engineer: J. BOLLLOM

Calibration Date: 10-Jan-13 16:22:40

Software Version: WL INSITE R3.6.0 (Build 3)

Calibration Version: 1

Calibrator Source S/N: TB146

Calibrator API Reference:265.00 api

Equivalent Calibrator API Reference:269.6 api

Field Verification	Shop	Field	Units
Background	51.2	54.3	api
Background + Calibrator	320.9	326.3	api
Calibrator	269.6	272.0	api

Shop	Field	Difference	Tolerance
269.6	272.0	-2.4	+/- 9.00

MICRO LOG SHOP CALIBRATION

Tool Name: Microlog Pad - 11014296

Reference Calibration Date: 04-Dec-12 14:59:08

Engineer: T. HYDE

Calibration Date: 04-Jan-13 10:49:34

Software Version: WL INSITE R3.6.0 (Build 3)

Calibration Version: 1

Host Tool Name: DSNT - 11055304

CALIBRATION COEFFICIENT SUMMARY

Measurement	Micro Log Normal		Micro Log Lateral		Units
	Measured	Calibrated	Measured	Calibrated	
Tool Zero	-0.05	-0.07	0.00	-0.01	ohmm
Calibration Point #1	0.02	0.00	0.01	0.00	ohmm
Calibration Point #2	20.01	20.00	20.01	20.00	ohmm
Internal Reference	19.95	19.94	19.99	19.99	ohmm

Measurement	Micro Log Normal	Micro Log Lateral	Units
	Tool Value	Tool Value	
Tool Zero	-1.41	0.08	V
Calibration Point #1	17.29	2.46	V
Calibration Point #2	5291.38	6877.02	V
Internal Reference	5275.39	6873.06	V

MICRO LOG FIELD CHECK

Tool Name: Microlog Pad - 11014296

Reference Calibration Date: 04-Jan-13 10:49:34

Engineer: J. BOLLLOM

Calibration Date: 10-Jan-13 16:17:07

Software Version: WL INSITE R3.6.0 (Build 3)

Calibration Version: 1

Measurement	Micro Log Normal		Micro Log Lateral		Units
	Shop	Field	Shop	Field	
Tool Zero	-0.07	-0.06	-0.01	-0.01	ohmm
Internal Reference	19.94	19.93	19.99	19.98	ohmm

Summary				
Signal	Shop	Field	Difference	Tolerance
Microlog Normal	19.94	19.93	0.01	+/- 0.80
Microlog Lateral	19.99	19.98	0.01	+/- 0.80

CALIBRATION SUMMARY

Sensor	Shop	Field	Post	Difference	Tolerance	Units
--------	------	-------	------	------------	-----------	-------

Gamma Ray Calibrator	269.6	272.0	-----	-2.4	+/- 9.00	api
Microlog Pad-11014296						
MicroLog Normal	19.94	19.93	-----	0.01	+/-0.80	ohmm
MicroLog Lateral	19.99	19.98	-----	0.01	+/-0.80	ohmm

Data: GARDEN_CITY_H11\0001 SP-GTET-DSN-SDL-FLEX-BSAT-ACRT-CHMDLE

Date: 11-Jan-13 12:46:34

HALLIBURTON**PARAMETERS REPORT**

Depth (ft)	Tool Name	Mnemonic	Description	Value	Units
TOP					
	SHARED	BS	Bit Size	7.875	in
	SHARED	UBS	Use Bit Size instead of Caliper for all applications.	No	
	SHARED	MDBS	Mud Base	Water	
	SHARED	MDWT	Borehole Fluid Weight	9.300	ppg
	SHARED	WAGT	Weighting Agent	Natural	
	SHARED	BSAL	Borehole salinity	0.00	ppm
	SHARED	FSAL	Formation Salinity NaCl	0.00	ppm
	SHARED	KPCT	Percent K in Mud by Weight?	0.00	%
	SHARED	RMUD	Mud Resistivity	2.000	ohmm
	SHARED	TRM	Temperature of Mud	75.0	degF
	SHARED	CSD	Logging Interval is Cased?	No	
	SHARED	ICOD	AHV Casing OD	5.500	in
	SHARED	ST	Surface Temperature	75.0	degF
	SHARED	TD	Total Well Depth	5090.00	ft
	SHARED	BHT	Bottom Hole Temperature	200.0	degF
	SHARED	SVTM	Navigation and Survey Master Tool	NONE	
	SHARED	AZTM	High Res Z Accelerometer Master Tool	GTET	
	SHARED	TEMM	Temperature Master Tool	NONE	
	SHARED	BHSM	Borehole Size Master Tool	NONE	
	Rwa / CrossPlot	XPOK	Process Crossplot?	Yes	
	Rwa / CrossPlot	FCHO	Select Source of F	Automatic	
	Rwa / CrossPlot	AFAC	Archie A factor	0.6200	
	Rwa / CrossPlot	MFAC	Archie M factor	2.1500	
	Rwa / CrossPlot	RMFR	Rmf Reference	0.10	ohmm
	Rwa / CrossPlot	TMFR	Rmf Ref Temp	75.00	degF
	Rwa / CrossPlot	RWA	Resistivity of Formation Water	0.05	ohmm
	Rwa / CrossPlot	ADP	Use Air Porosity to calculate CrossplotPhi	No	
	GTET	GROK	Process Gamma Ray?	Yes	
	GTET	GRSO	Gamma Tool Standoff	0.000	in
	GTET	GEOK	Process Gamma Ray EVR?	No	
	GTET	TPOS	Tool Position for Gamma Ray Tools.	Eccentered	
	DSNT	DNOK	Process DSN?	Yes	
	DSNT	DEOK	Process DSN EVR?	No	
	DSNT	NLIT	Neutron Lithology	Limestone	
	DSNT	DNSO	DSN Standoff - 0.25 in (6.35 mm) Recommended	0.250	in
	DSNT	DNTP	Temperature Correction Type	None	
	DSNT	DPRS	DSN Pressure Correction Type	None	

DSNT	SHCO	View More Correction Options	No	
DSNT	UTVD	Use TVD for Gradient Corrections?	No	
DSNT	LHWT	Logging Horizontal Water Tank?	No	
SDLT	CLOK	Process Caliper Outputs?	Yes	
SDLT Pad	DNOK	Process Density?	Yes	
SDLT Pad	DNOK	Process Density EVR?	No	
SDLT Pad	CB	Logging Calibration Blocks?	No	
SDLT Pad	SPVT	SDLT Pad Temperature Valid?	Yes	
SDLT Pad	DTWN	Disable temperature warning	No	
SDLT Pad	DMA	Formation Density Matrix	2.710	g/cc
SDLT Pad	DFL	Formation Density Fluid	1.000	g/cc
Microlog Pad	MLOK	Process MicroLog Outputs?	Yes	
BSAT	MBOK	Compute BCAS Results?	Yes	
BSAT	FLLO	Frequency Filter Low Pass Value?	5000	Hz
BSAT	FLHI	Frequency Filter High Pass Value?	27000	Hz
BSAT	DTFL	Delta -T Fluid	189.00	uspf
BSAT	DTMT	Delta -T Matrix Type	User define	
BSAT	DTMA	Delta -T Matrix	47.60	uspf
BSAT	DTSH	Delta -T Shale	100.00	uspf
BSAT	SPEQ	Acoustic Porosity Equation	Wylie	
ACRt Sonde	RTOK	Process ACRt?	Yes	
ACRt Sonde	MNSO	Minimum Tool Standoff	1.50	in
ACRt Sonde	TCS1	Temperature Correction Source	FP Lwr & FP Upr	
ACRt Sonde	TPOS	Tool Position	Free Hanging	
ACRt Sonde	RMOP	Rmud Source	Mud Cell	
ACRt Sonde	RMIN	Minimum Resistivity for MAP	0.20	ohmm
ACRt Sonde	RMIN	Maximum Resistivity for MAP	200.00	ohmm
ACRt Sonde	THQY	Threshold Quality	0.50	
ACRt Sonde	MRFX	Fixed mud resistivity	2000	ohmm

BOTTOM

Data: GARDEN_CITY_H11\0001 SP-GTET-DSN-SDL-FLEX-BSAT-ACRT-CHWDLE

Date: 11-Jan-13 12:45:36

HALLIBURTON

INPUTS, DELAYS AND FILTERS TABLE

Mnemonic	Input Description	Delay (ft)	Filter Type	Filter Length (ft)
Depth Panel				
TENS	Tension	0.00	NO	
CH_HOS				
DHTN	DownholeTension	0.00	BLK	0.000
SP Sub				
PLTC	Plot Control Mask	72.25	NO	
SP	Spontaneous Potential	72.25	BLK	1.250
SPR	Raw Spontaneous Potential	72.25	NO	
SPO	Spontaneous Potential Offset	72.25	NO	
GTET				
TPUL	Tension Pull	64.23	NO	
GR	Natural Gamma Ray API	64.23	TRI	1.750
GRU	Unfiltered Natural Gamma Ray API	64.23	NO	

EGR	Natural Gamma Ray API with Enhanced Vertical Resolution	64.23	W	1.416 , 0.750
ACCZ	Accelerometer Z	0.00	BLK	0.083
DEVI	Inclination	0.00	NO	
DSNT				
TPUL	Tension Pull	53.99	NO	
RNDS	Near Detector Telemetry Counts	54.09	BLK	1.417
RFDS	Far Detector Telemetry Counts	54.84	TRI	0.583
DNTT	DSN Tool Temperature	54.09	NO	
DSNS	DSN Tool Status	53.99	NO	
ERND	Near Detector Telemetry Counts EVR	54.09	BLK	0.000
ERFD	Far Detector Telemetry Counts EVR	54.84	BLK	0.000
ENTM	DSN Tool Temperature EVR	54.09	NO	
SDLT				
TPUL	Tension Pull	44.09	NO	
PCAL	Pad Caliper	44.09	TRI	0.250
ACAL	Arm Caliper	44.09	TRI	0.250
BSAT				
TPUL	Tension Pull	27.09	NO	
STAT	Status	27.09	NO	
DLYT	Delay Time	27.09	NO	
SI	Sample Interval	27.09	NO	
TXRX	Raw Telemetry 10 Receivers	27.09	NO	
FRMC	Tool Frame Count	27.09	NO	
GMOD	Gain processing mode	19.83	NO	
ACRt Sonde				
TPUL	Tension Pull	2.97	NO	
F1R1	ACRT 12KHz - 80in R value	9.22	BLK	0.000
F1X1	ACRT 12KHz - 80in X value	9.22	BLK	0.000
F1R2	ACRT 12KHz - 50in R value	6.72	BLK	0.000
F1X2	ACRT 12KHz - 50in X value	6.72	BLK	0.000
F1R3	ACRT 12KHz - 29in R value	5.22	BLK	0.000
F1X3	ACRT 12KHz - 29in X value	5.22	BLK	0.000
F1R4	ACRT 12KHz - 17in R value	4.22	BLK	0.000
F1X4	ACRT 12KHz - 17in X value	4.22	BLK	0.000
F1R5	ACRT 12KHz - 10in R value	3.72	BLK	0.000
F1X5	ACRT 12KHz - 10in X value	3.72	BLK	0.000
F1R6	ACRT 12KHz - 6in R value	3.47	BLK	0.000
F1X6	ACRT 12KHz - 6in X value	3.47	BLK	0.000
F2R1	ACRT 36KHz - 80in R value	9.22	BLK	0.000
F2X1	ACRT 36KHz - 80in X value	9.22	BLK	0.000
F2R2	ACRT 36KHz - 50in R value	6.72	BLK	0.000
F2X2	ACRT 36KHz - 50in X value	6.72	BLK	0.000
F2R3	ACRT 36KHz - 29in R value	5.22	BLK	0.000
F2X3	ACRT 36KHz - 29in X value	5.22	BLK	0.000
F2R4	ACRT 36KHz - 17in R value	4.22	BLK	0.000
F2X4	ACRT 36KHz - 17in X value	4.22	BLK	0.000
F2R5	ACRT 36KHz - 10in R value	3.72	BLK	0.000
F2X5	ACRT 36KHz - 10in X value	3.72	BLK	0.000
F2R6	ACRT 36KHz - 6in R value	3.47	BLK	0.000
F2X6	ACRT 36KHz - 6in X value	3.47	BLK	0.000
F3R1	ACRT 72KHz - 80in R value	9.22	BLK	0.000
F3X1	ACRT 72KHz - 80in X value	9.22	BLK	0.000
F3R2	ACRT 72KHz - 50in R value	6.72	BLK	0.000

F3R2	ACRT 72KHz - 50in R value	3.72	BLK	0.000
F3X2	ACRT 72KHz - 50in X value	6.72	BLK	0.000
F3R3	ACRT 72KHz - 29in R value	5.22	BLK	0.000
F3X3	ACRT 72KHz - 29in X value	5.22	BLK	0.000
F3R4	ACRT 72KHz - 17in R value	4.22	BLK	0.000
F3X4	ACRT 72KHz - 17in X value	4.22	BLK	0.000
F3R5	ACRT 72KHz - 10in R value	3.72	BLK	0.000
F3X5	ACRT 72KHz - 10in X value	3.72	BLK	0.000
F3R6	ACRT 72KHz - 6in R value	3.47	BLK	0.000
F3X6	ACRT 72KHz - 6in X value	3.47	BLK	0.000
RMUD	Mud Resistivity	12.76	BLK	0.000
F1RT	Transmitter Reference 12 KHz Real Signal	2.97	BLK	0.000
F1XT	Transmitter Reference 12 KHz Imaginary Signal	2.97	BLK	0.000
F2RT	Transmitter Reference 36 KHz Real Signal	2.97	BLK	0.000
F2XT	Transmitter Reference 36 KHz Imaginary Signal	2.97	BLK	0.000
F3RT	Transmitter Reference 72 KHz Real Signal	2.97	BLK	0.000
F3XT	Transmitter Reference 72 KHz Imaginary Signal	2.97	BLK	0.000
TFPU	Upper Feedpipe Temperature Calculated	2.97	BLK	0.000
TFPL	Lower Feedpipe Temperature Calculated	2.97	BLK	0.000
ITMP	Instrument Temperature	2.97	BLK	0.000
TCVA	Temperature Correction Values Loop Off	2.97	NO	
TIDV	Instrument Temperature Derivative	2.97	NO	
TUDV	Upper Temperature Derivative	2.97	NO	
TLDV	Lower Temperature Derivative	2.97	NO	
TRBD	Receiver Board Temperature	2.97	NO	
SDLT Pad				
TPUL	Tension Pull	44.08	NO	
NAB	Near Above	43.90	BLK	0.920
NHI	Near Cesium High	43.90	BLK	0.920
NLO	Near Cesium Low	43.90	BLK	0.920
NVA	Near Valley	43.90	BLK	0.920
NBA	Near Barite	43.90	BLK	0.920
NDE	Near Density	43.90	BLK	0.920
NPK	Near Peak	43.90	BLK	0.920
NLI	Near Lithology	43.90	BLK	0.920
NBAU	Near Barite Unfiltered	43.90	BLK	0.250
NLIU	Near Lithology Unfiltered	43.90	BLK	0.250
FAB	Far Above	44.26	BLK	0.250
FHI	Far Cesium High	44.26	BLK	0.250
FLO	Far Cesium Low	44.26	BLK	0.250
FVA	Far Valley	44.26	BLK	0.250
FBA	Far Barite	44.26	BLK	0.250
FDE	Far Density	44.26	BLK	0.250
FPK	Far Peak	44.26	BLK	0.250
FLI	Far Lithology	44.26	BLK	0.250
PTMP	Pad Temperature	44.09	BLK	0.920
NHV	Near Detector High Voltage	43.49	NO	
FHV	Far Detector High Voltage	43.49	NO	
ITMP	Instrument Temperature	43.49	NO	
DDHV	Detector High Voltage	43.49	NO	
Microlog Pad				
TPUL	Tension Pull	44.28	NO	
MINV	Microlog Lateral	44.28	BLK	0.750
MNOR	Microlog Normal	44.28	BLK	0.750

COMPANY	OXY USA INC.		
WELL	GARDEN CITY H-11		
FIELD	GARDEN CITY		
COUNTY	FINNEY	STATE	KANSAS
HALLIBURTON		MICROLOG	