



**COMPLETION
& PRODUCTION
SERVICES CO.**

**SONIC
LOG**

Company VINCENT OIL CORPORATION
Well PETERS #1-24
Field WILDCAT
County FORD
State KANSAS

Company VINCENT OIL CORPORATION
Well PETERS #1-24
Field WILDCAT
County FORD State KANSAS

Location: API # : 15-057-20868-0000
1555' FNL & 2280' FWL
SEC 24 TWP 27S RGE 24W
Permanent Datum GROUND LEVEL Elevation 2459
Log Measured From KELLY BUSHING 10' A.G.L.
Drilling Measured From KELLY BUSHING
Other Services
CDL/CNL/PE
DIL/MEL
Elevation
K.B. 2469
D.F. 2467
G.L. 2459

Date	1/7/13
Run Number	TWO
Depth Driller	5200
Depth Logger	5198
Bottom Logged Interval	5186
Top Log Interval	500
Casing Driller	8 5/8" @ 558'
Casing Logger	558
Bit Size	7 7/8"
Type Fluid in Hole	CHEMICAL MUD
Density / Viscosity	9.2/54
pH / Fluid Loss	10.5/9.2
Source of Sample	FLOWLINE
Rim @ Meas. Temp	.650 @ 100F
Rmf @ Meas. Temp	.488 @ 100F
Rmc @ Meas. Temp	.780 @ 100F
Source of Rmf / Rmc	MEASUREMENT
Rim @ BHT	.512 @ 127F
Time Circulation Stopped	5.5 HOURS
Time Logger on Bottom	10:00 P.M.
Maximum Recorded Temperature	127F
Equipment Number	4854
Location	HAYS, KANSAS
Recorded By	JEFF LUEBBERS
Witnessed By	TOM DUDGEON

<<< Fold Here >>>

All interpretations are opinions based on inferences from electrical or other measurements and we cannot and do not guarantee the accuracy or correctness of any interpretation, and we shall not, except in the case of gross or willful negligence on our part, be liable or responsible for any loss, costs, damages, or expenses incurred or sustained by anyone resulting from any interpretation made by any of our officers, agents or employees. These interpretations are also subject to our general terms and conditions set out in our current Price Schedule.

Comments

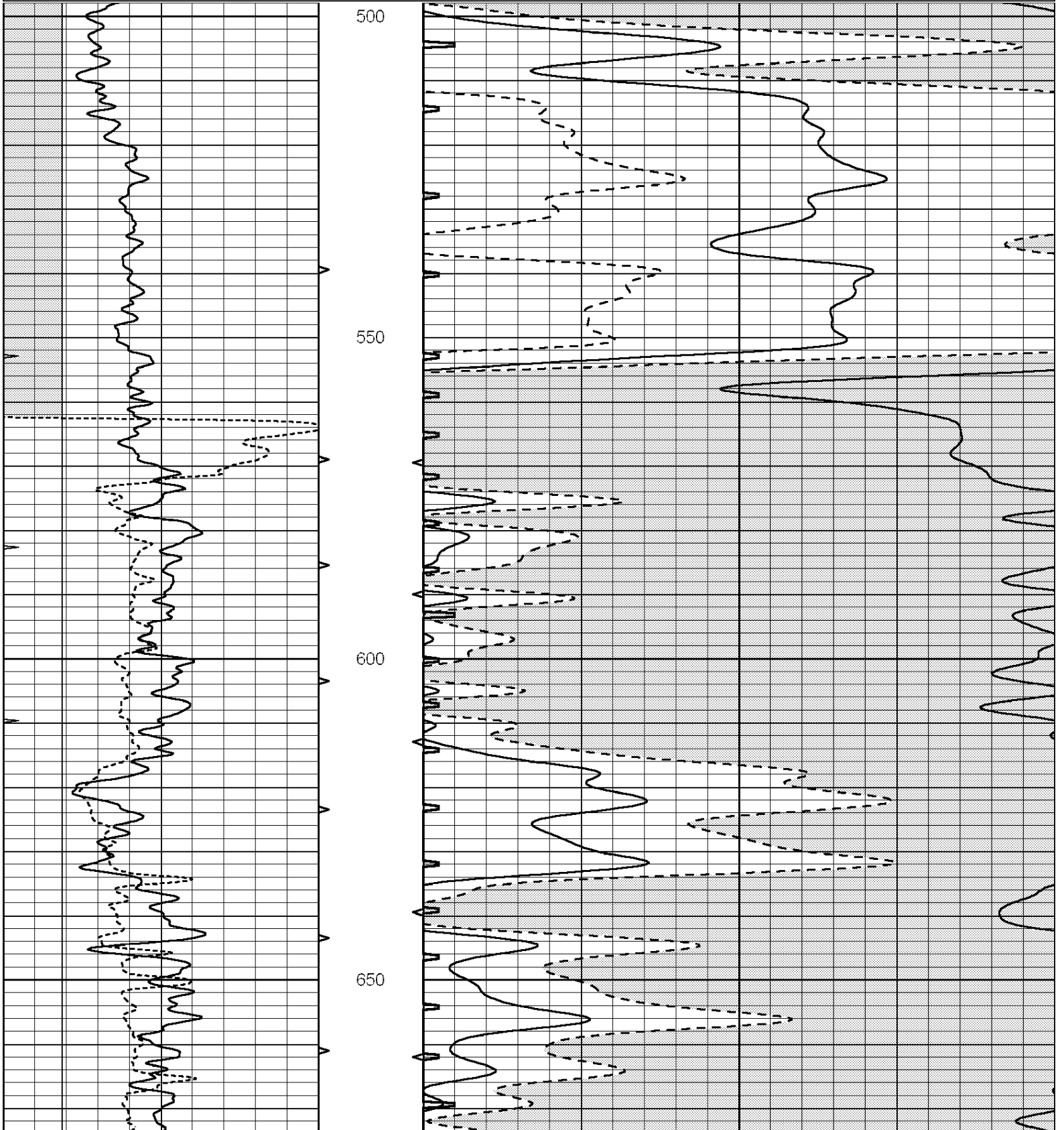
THANK YOU FOR USING "NABORS" HAYS, KANSAS (785) 628-6395
DIRECTIONS
FT. DODGE, KS. 1E. ON HWY 400 TO "RD. 117", 3S., E. INTO JUST PAST SMALL BARN ON THE HILL

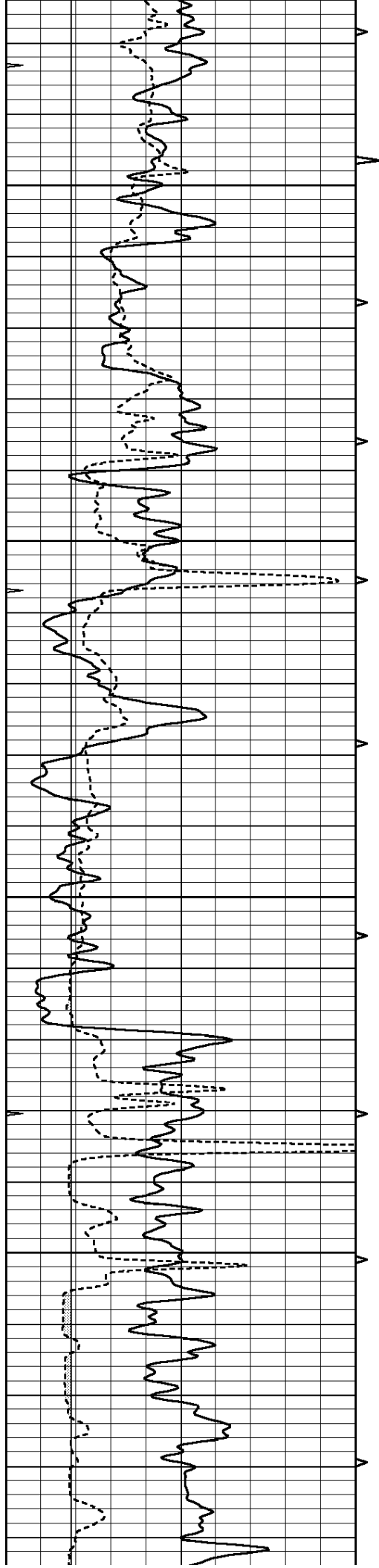


MAIN SECTION

Database File: 010041pe.db
 Dataset Pathname: pass7.11
 Presentation Format: slt
 Dataset Creation: Tue Jan 08 02:37:10 2013
 Charted by: Depth in Feet scaled 1:240

0	GAMMA RAY (GAPI)	150	ABHV	140	DELTA TIME (usec/ft)	40	
6	CALIPER (in)	16	10 (ft3)	0	30	SONIC POROSITY (pu)	-10
0	MINMK	20	TBHV	0	ITT (msec)	20	
			0 (ft3)	10			



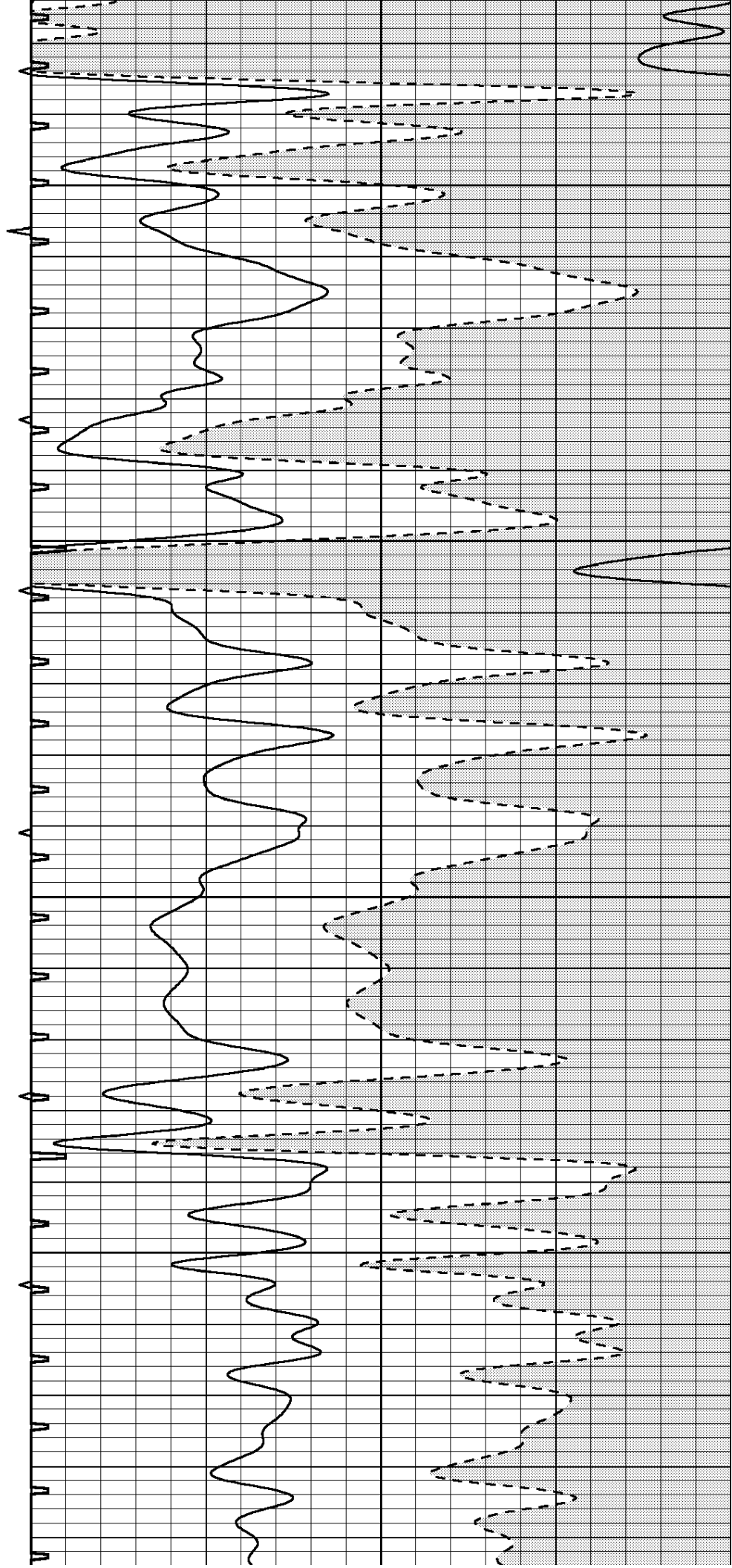


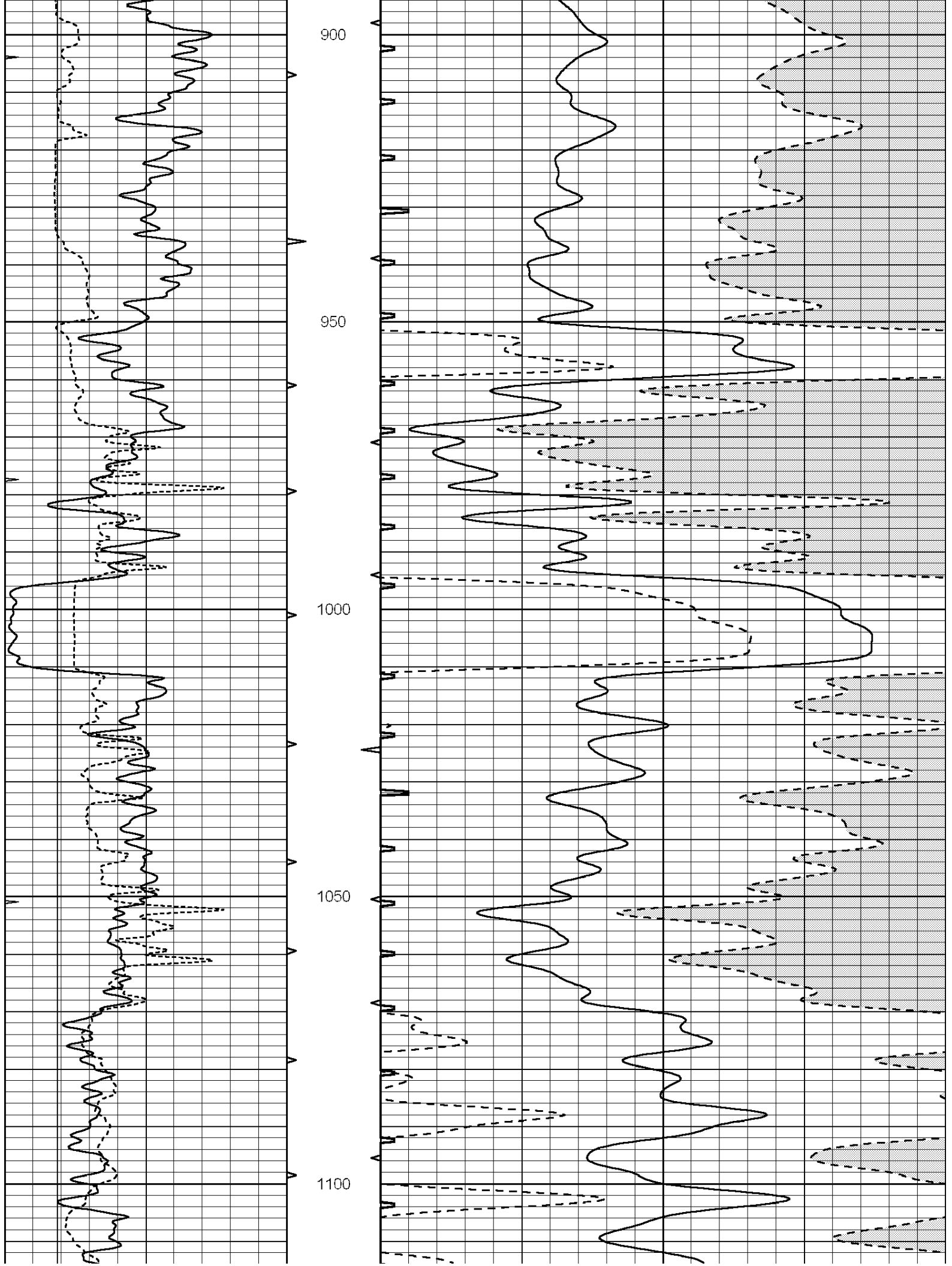
700

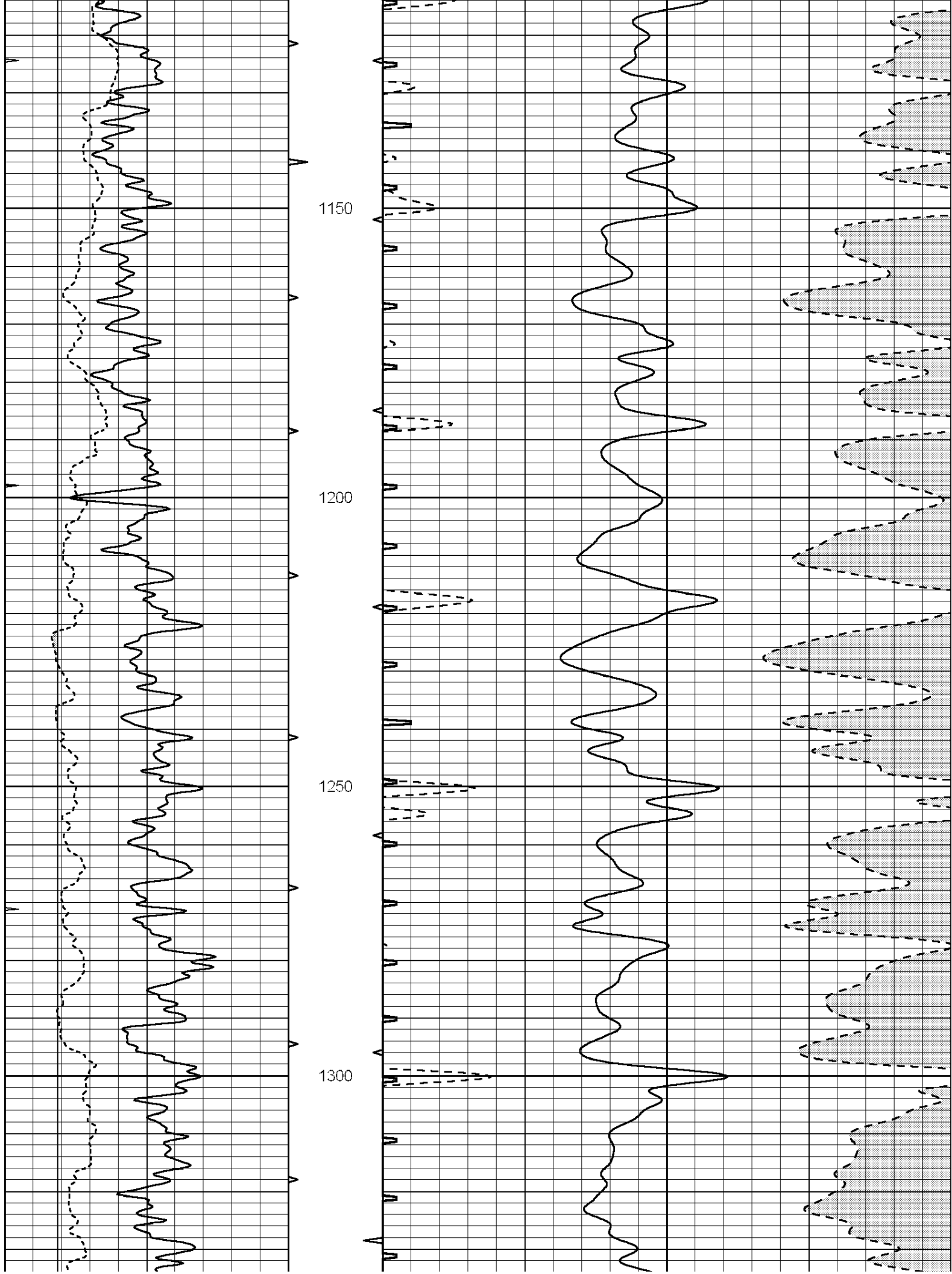
750

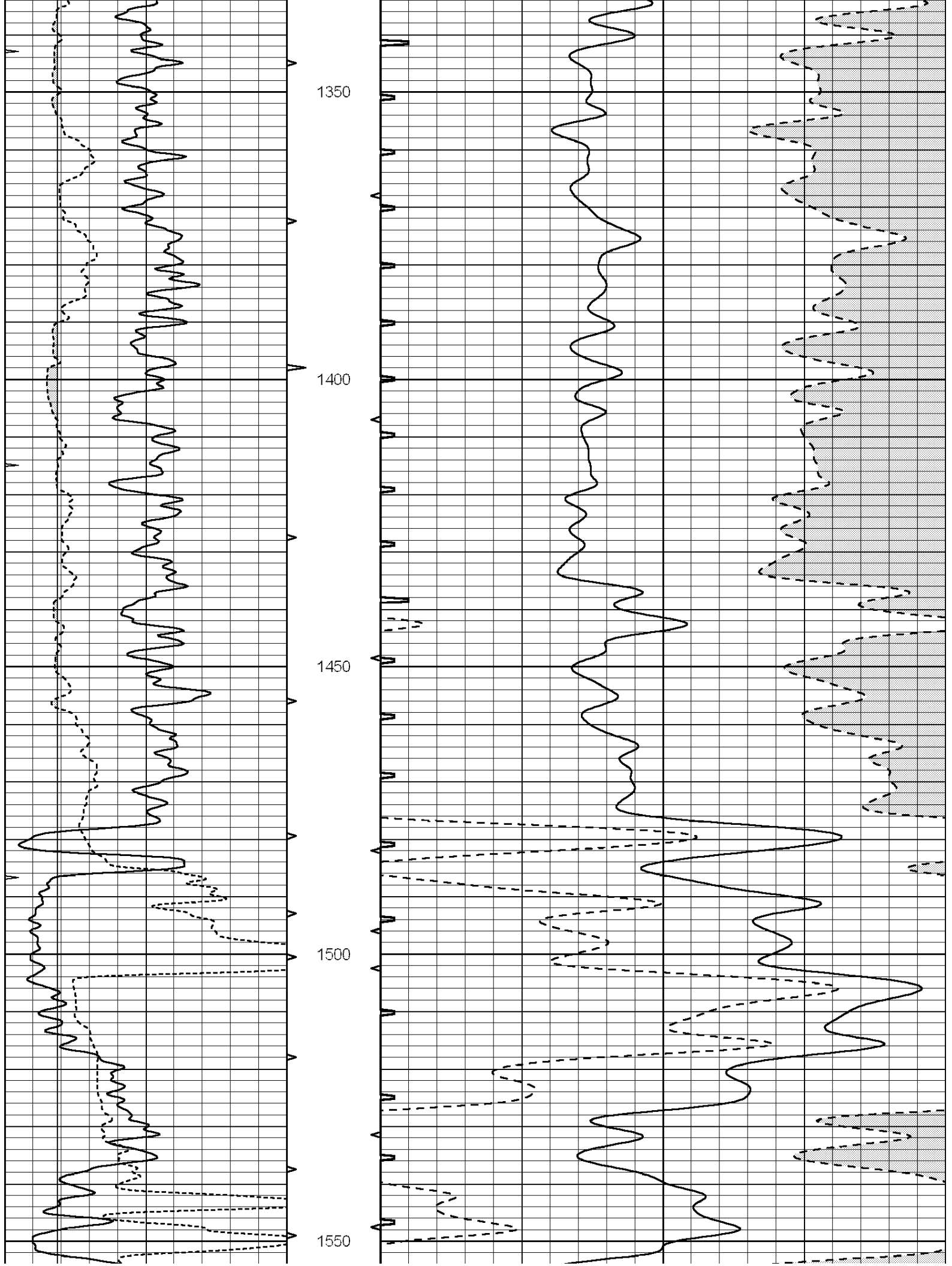
800

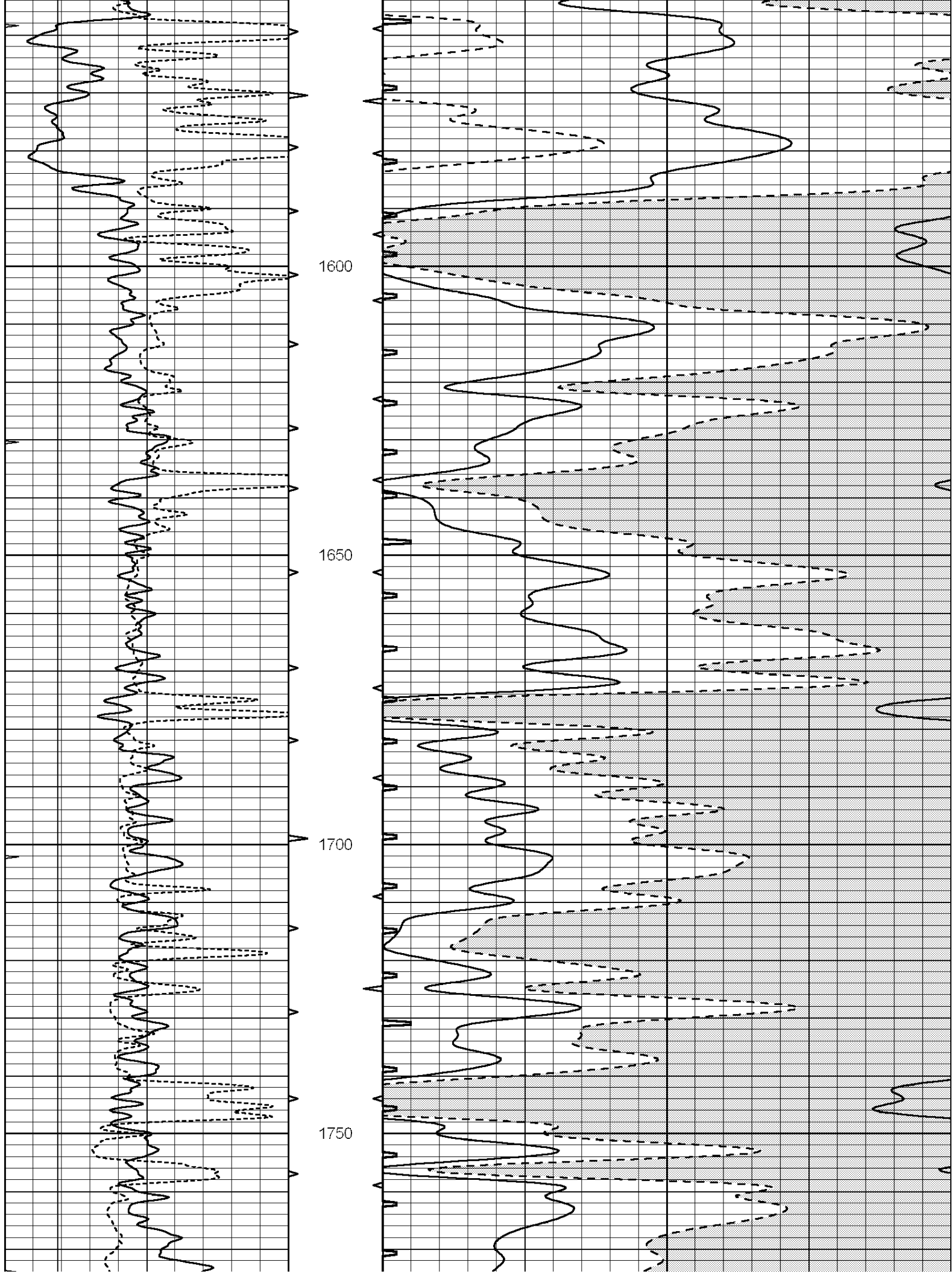
850

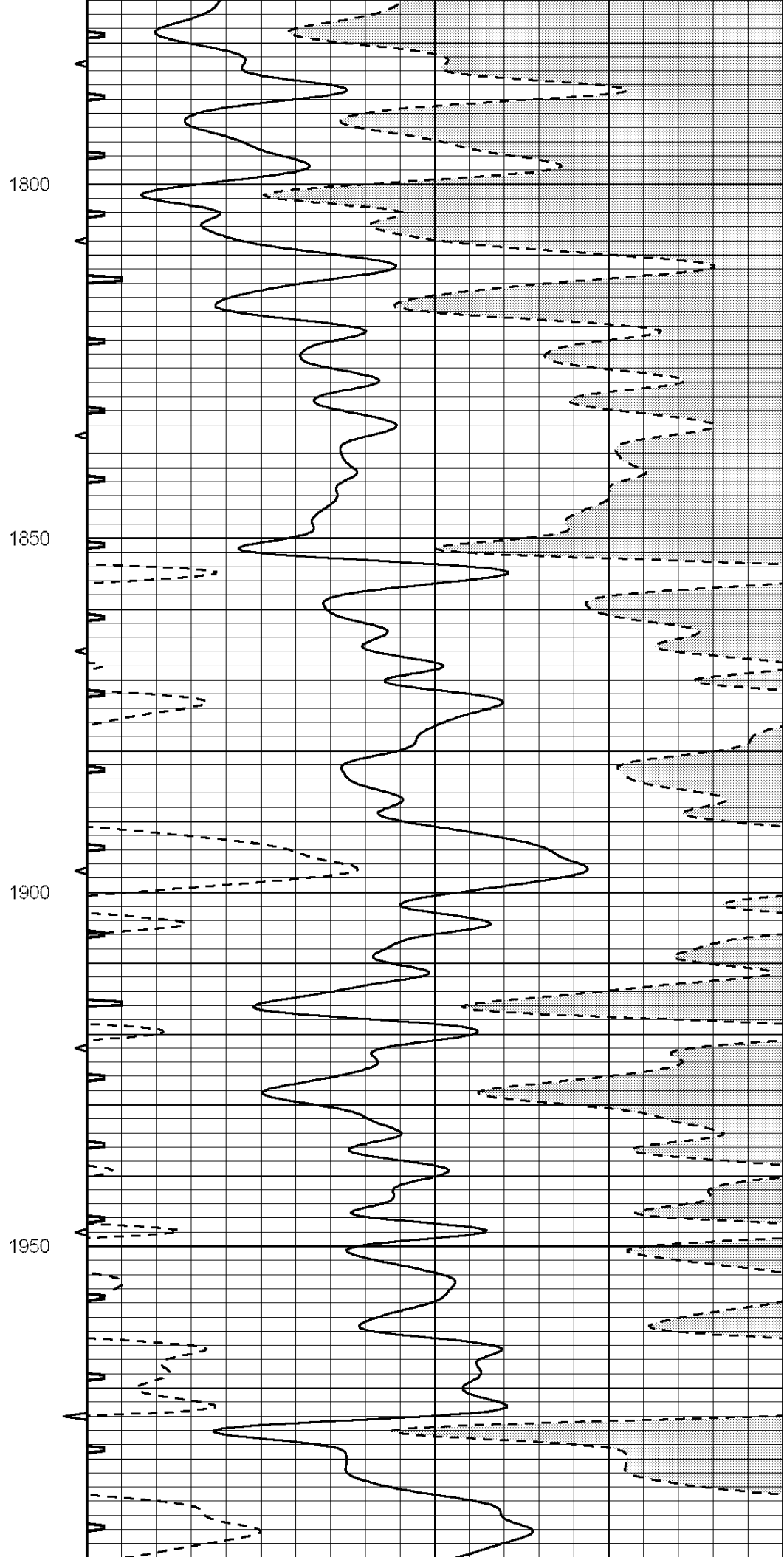
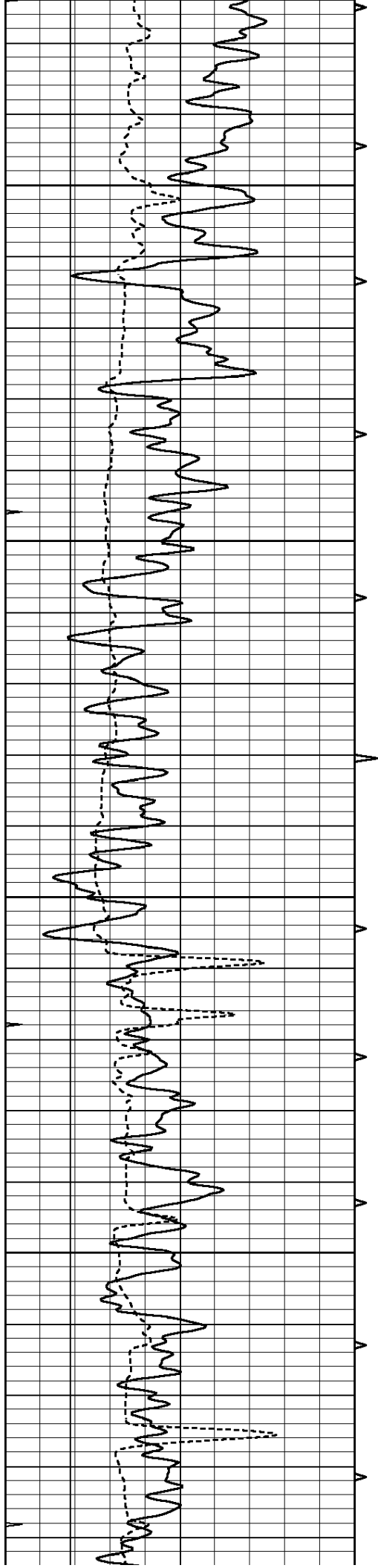


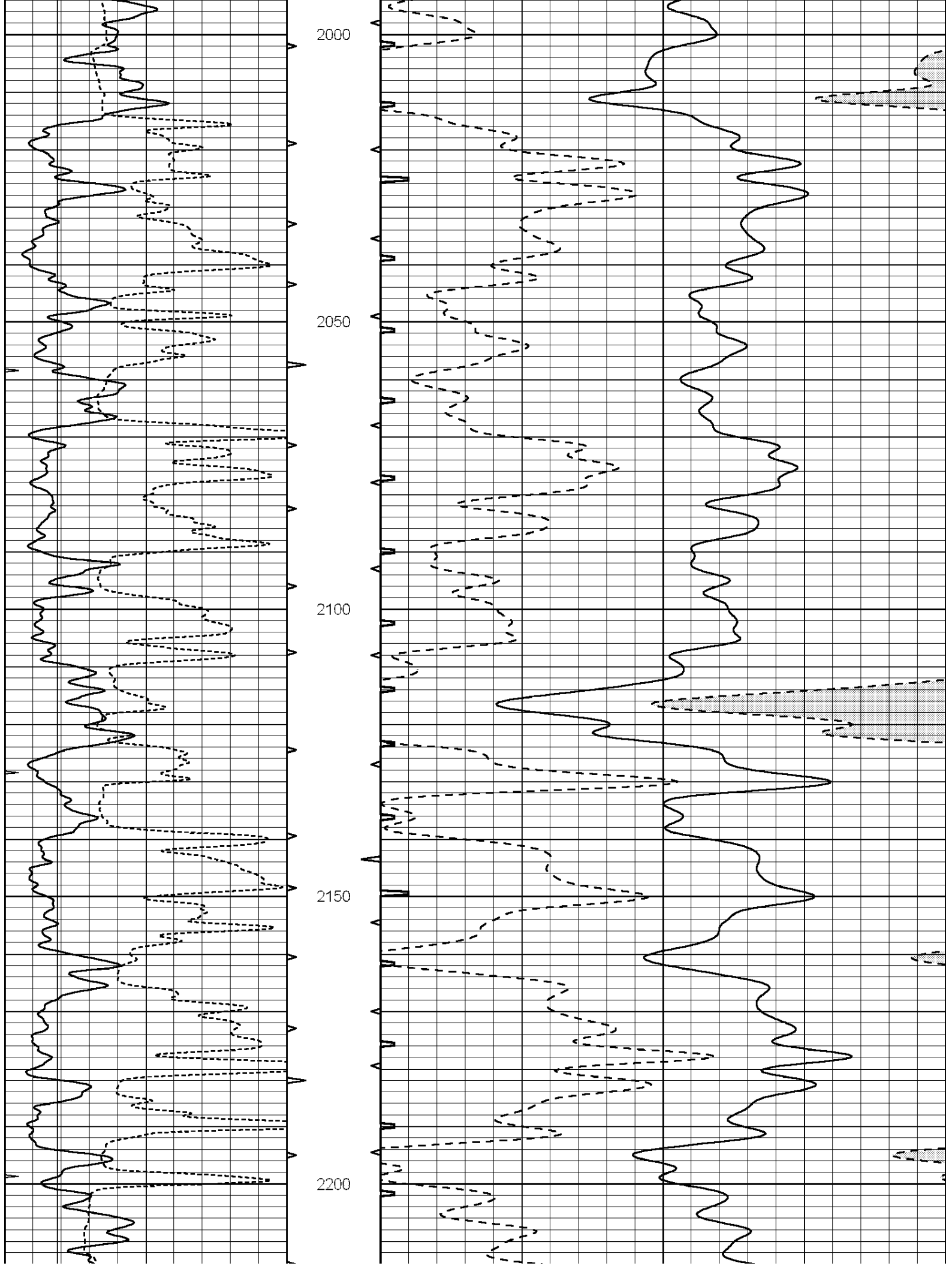


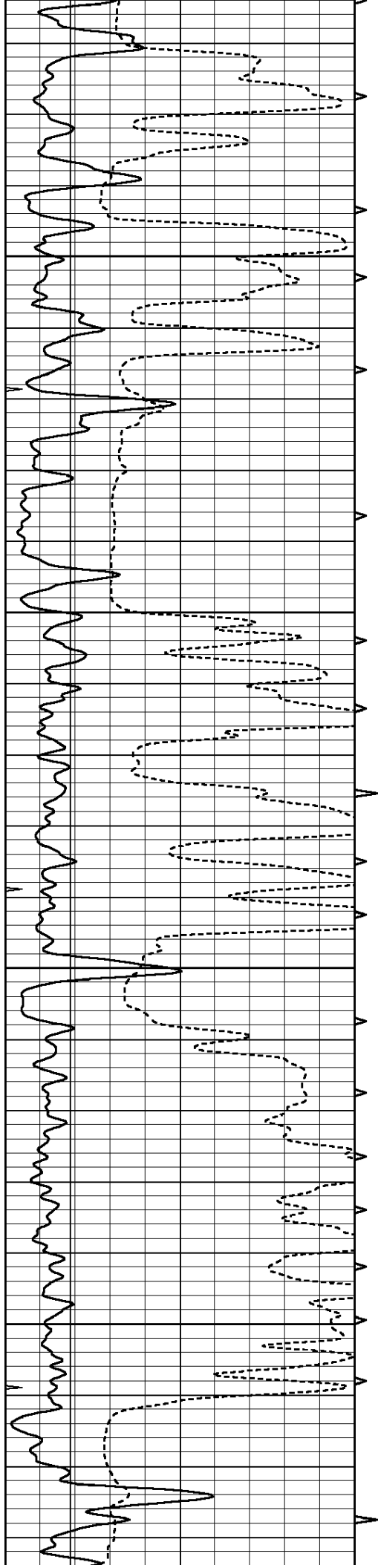










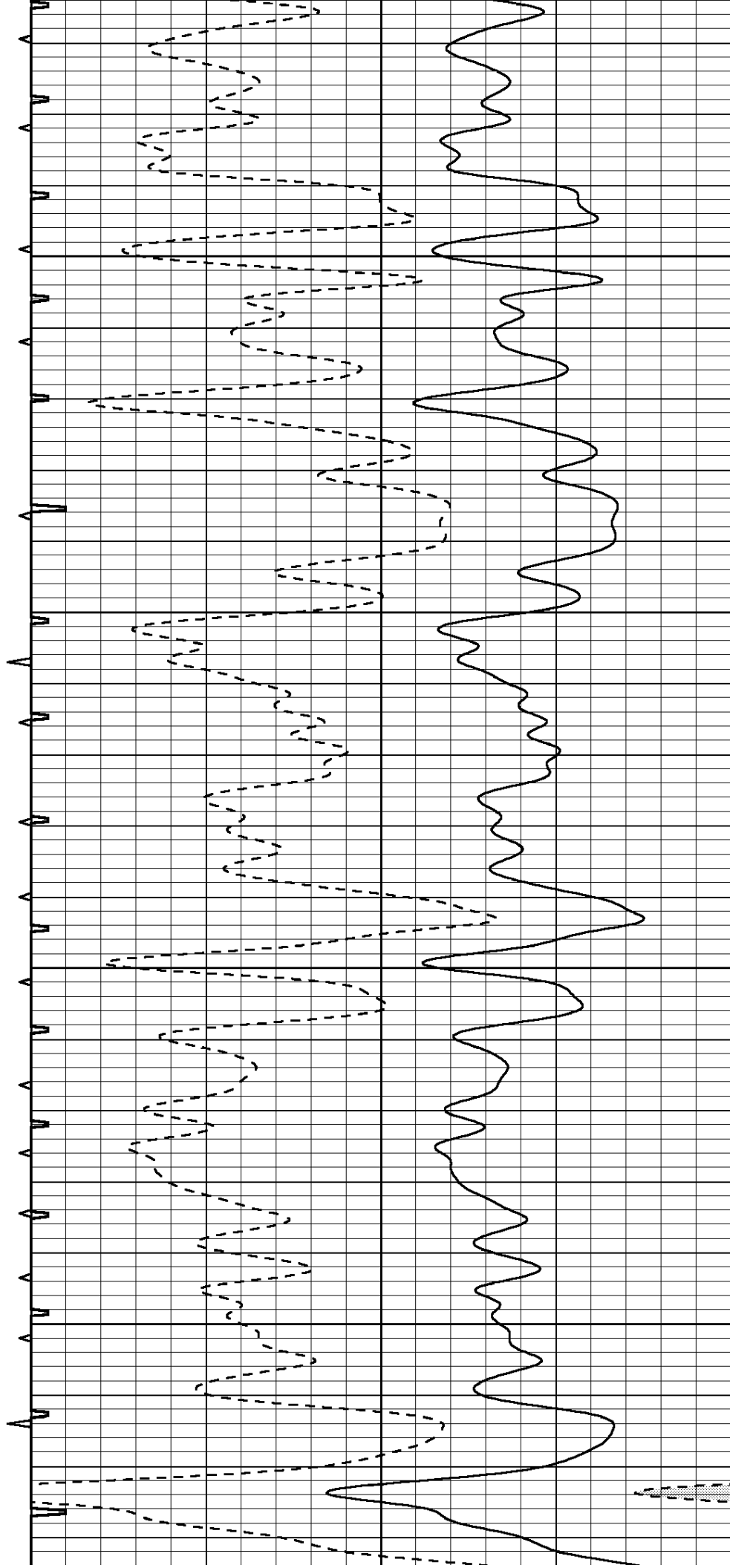


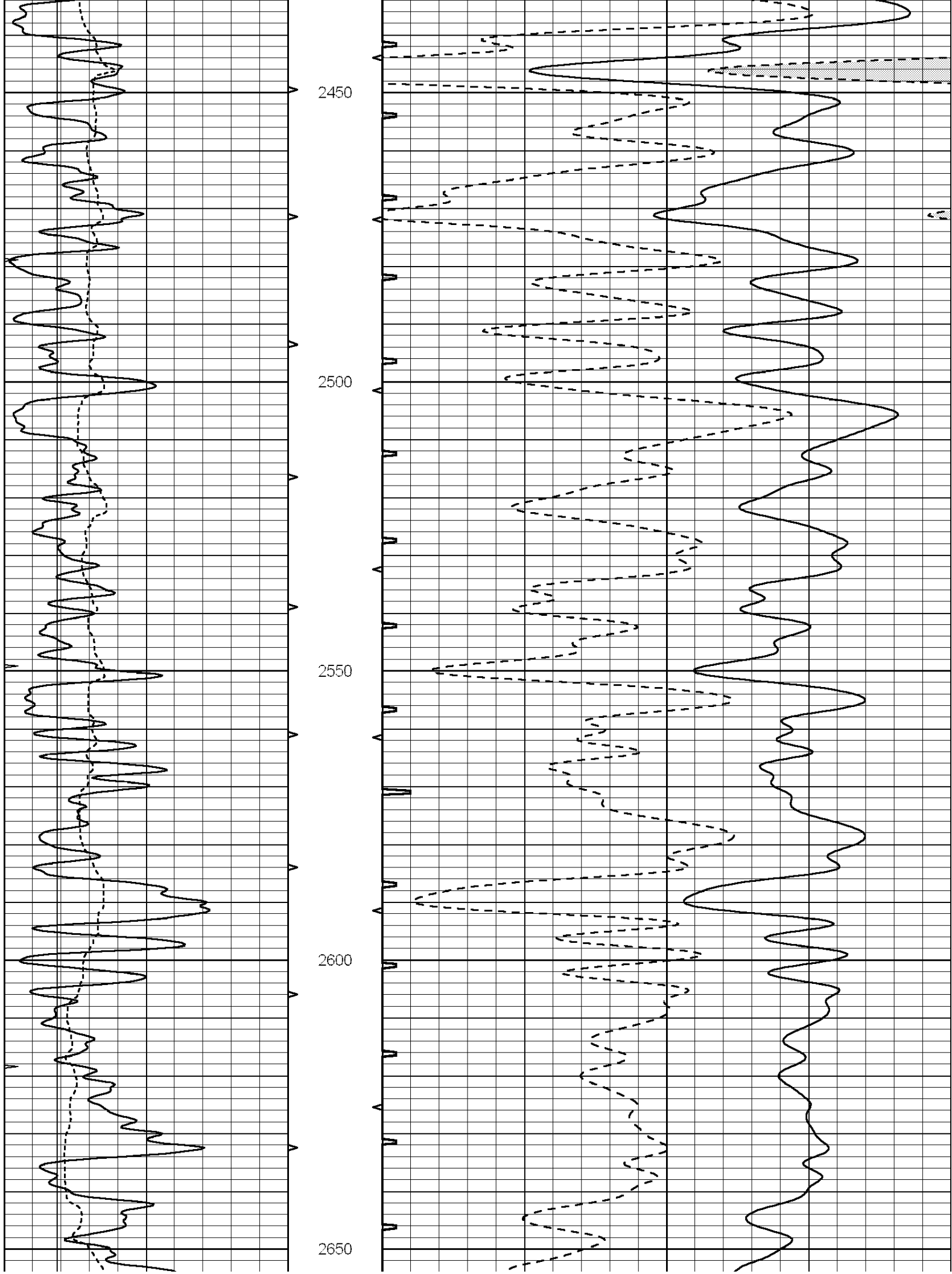
2250

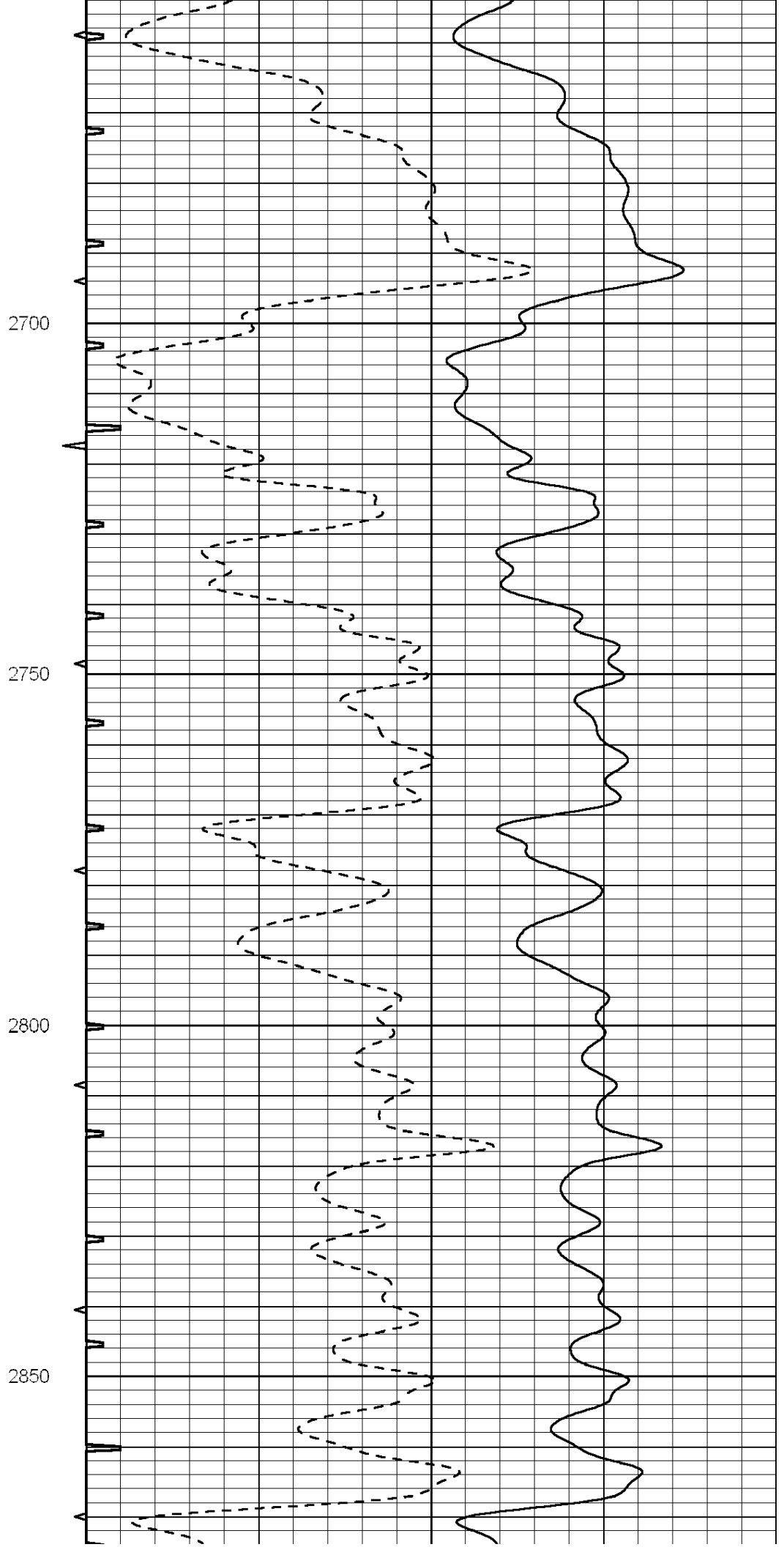
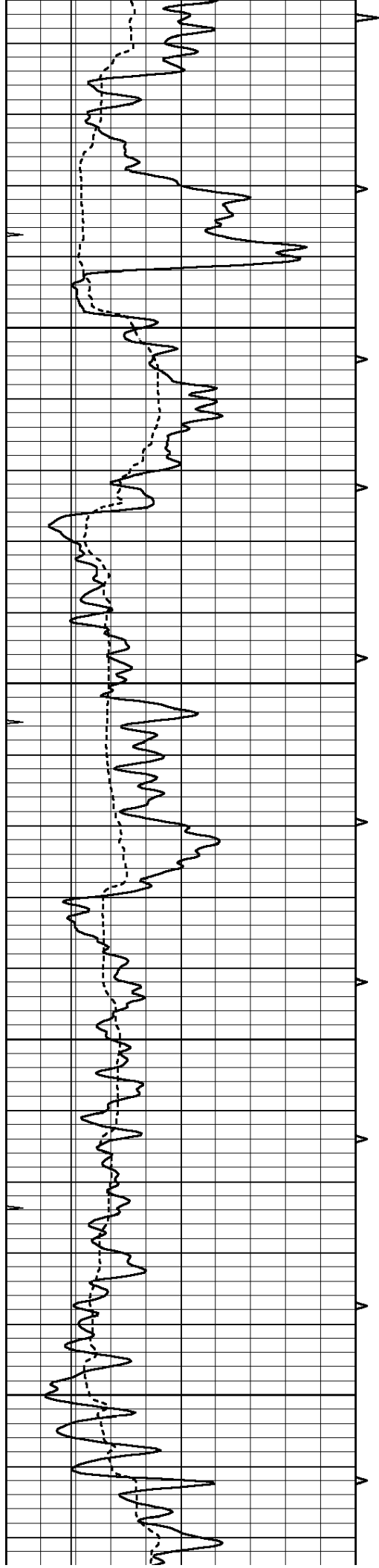
2300

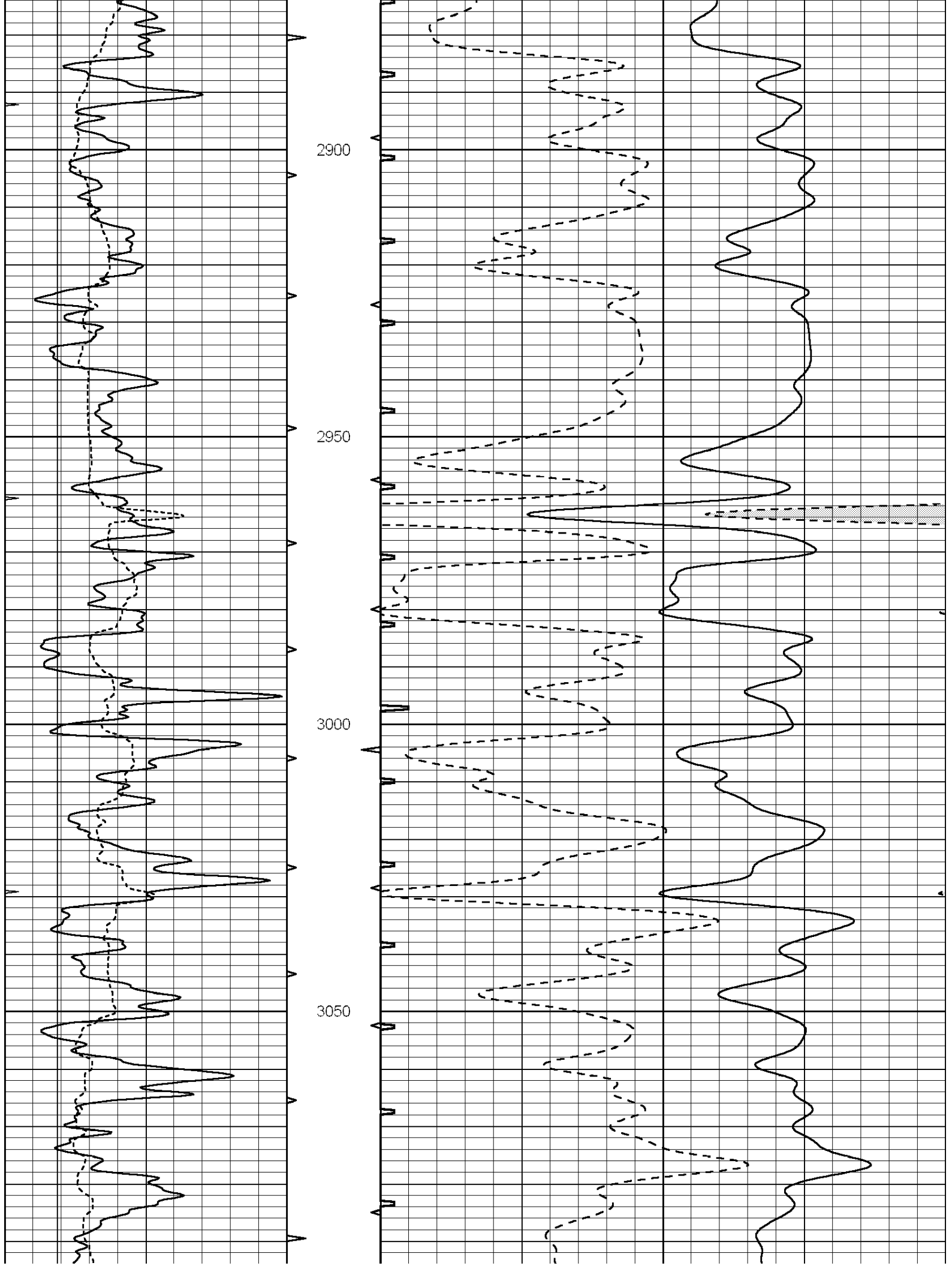
2350

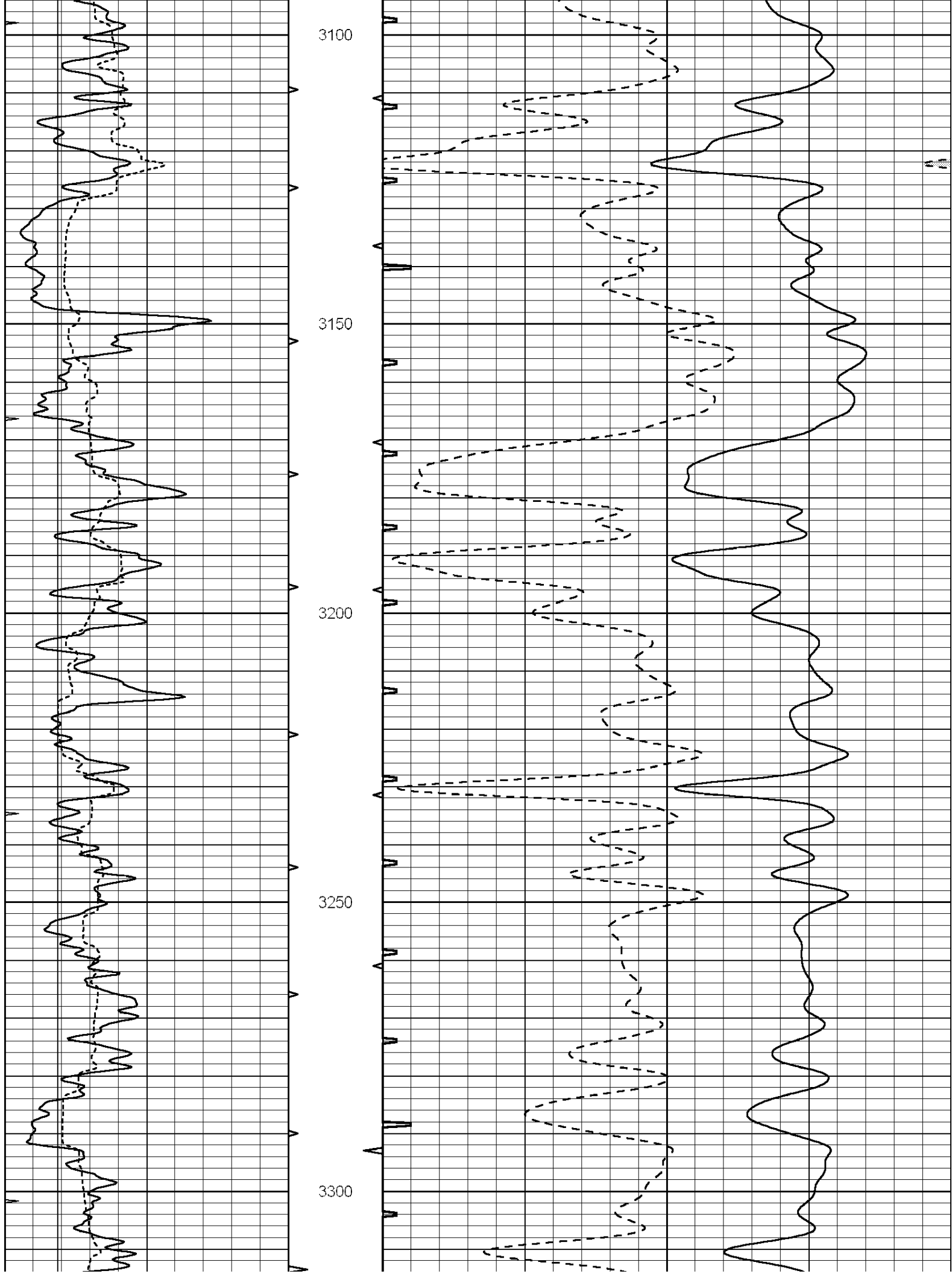
2400

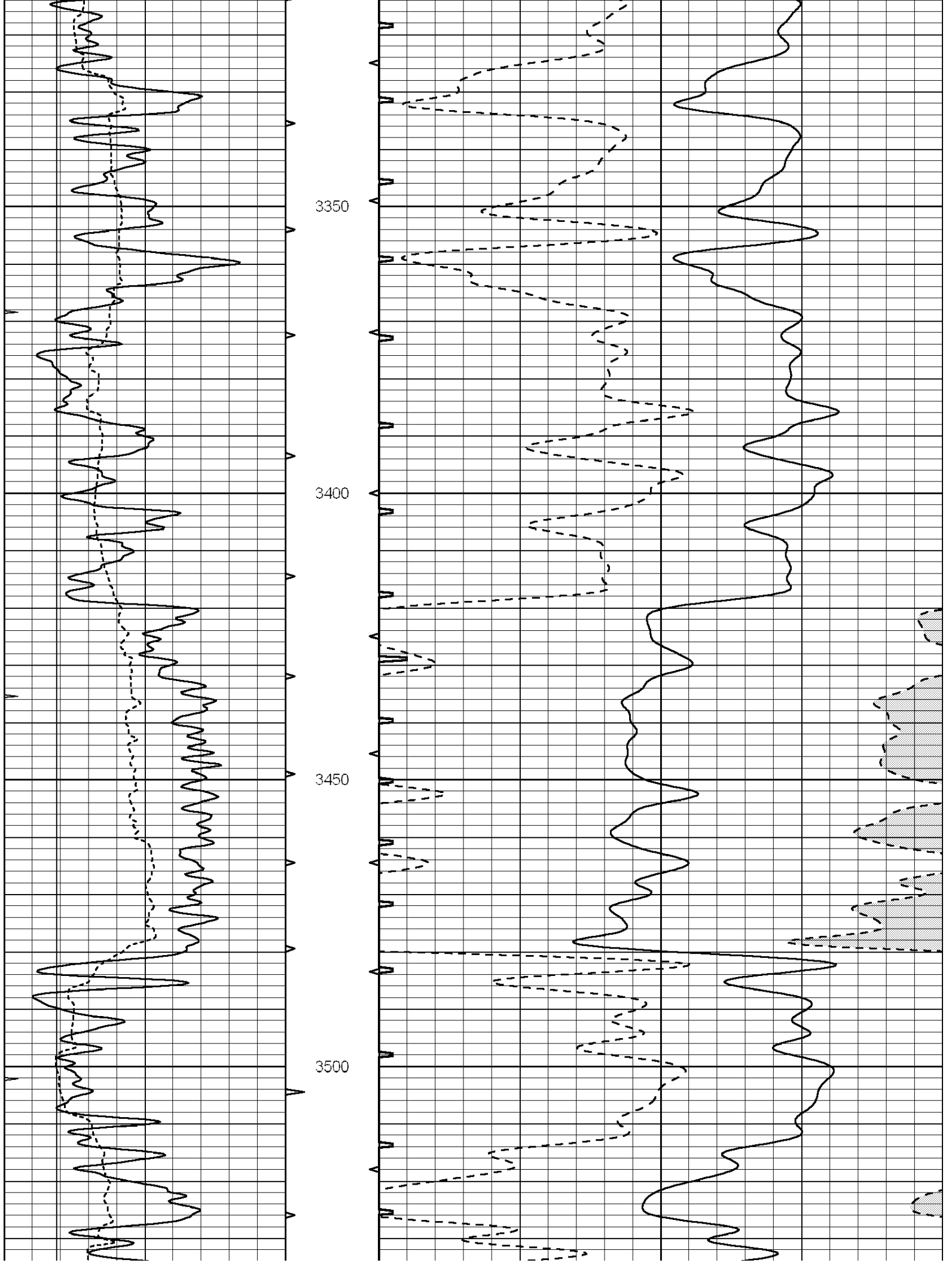


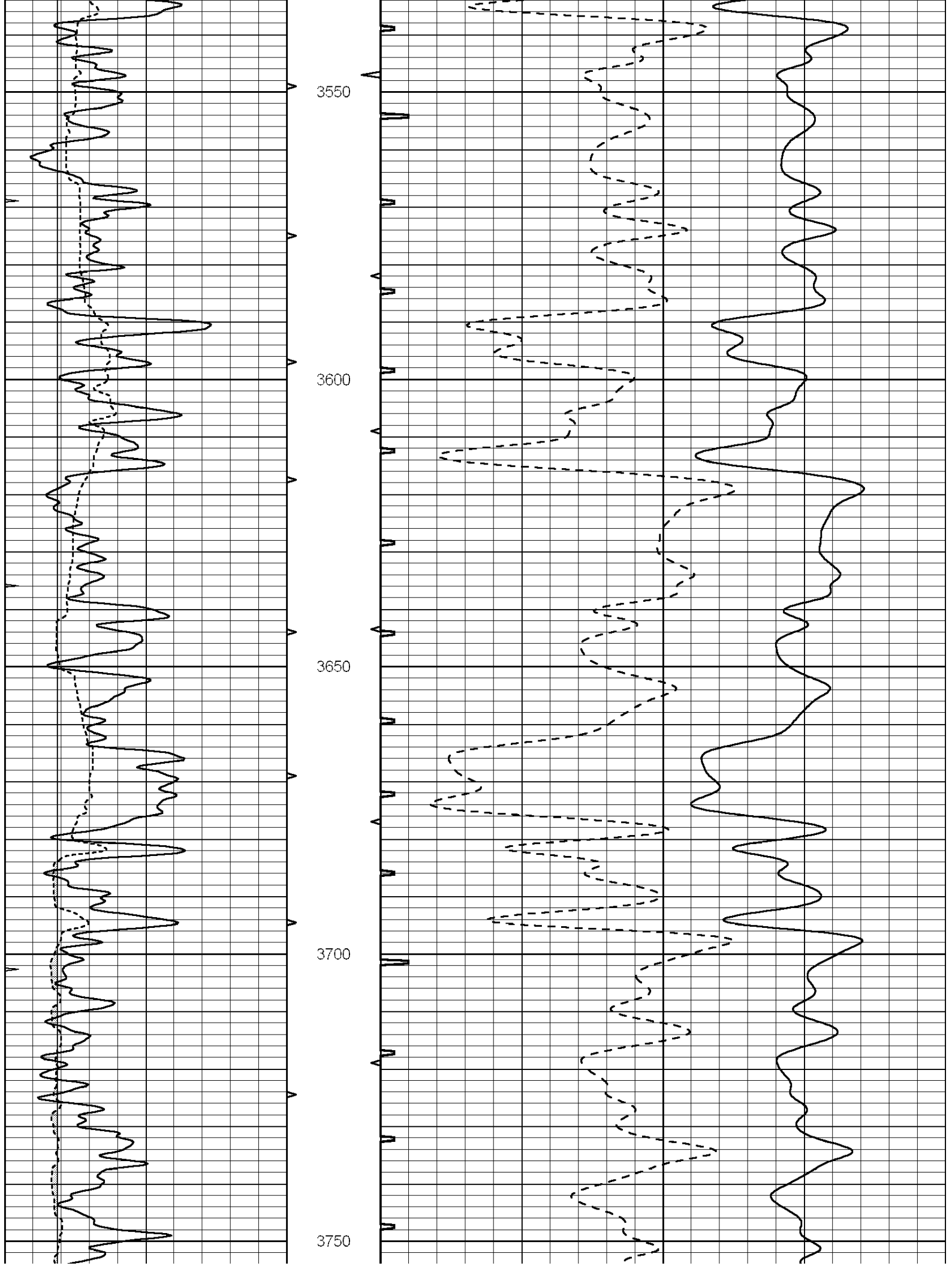


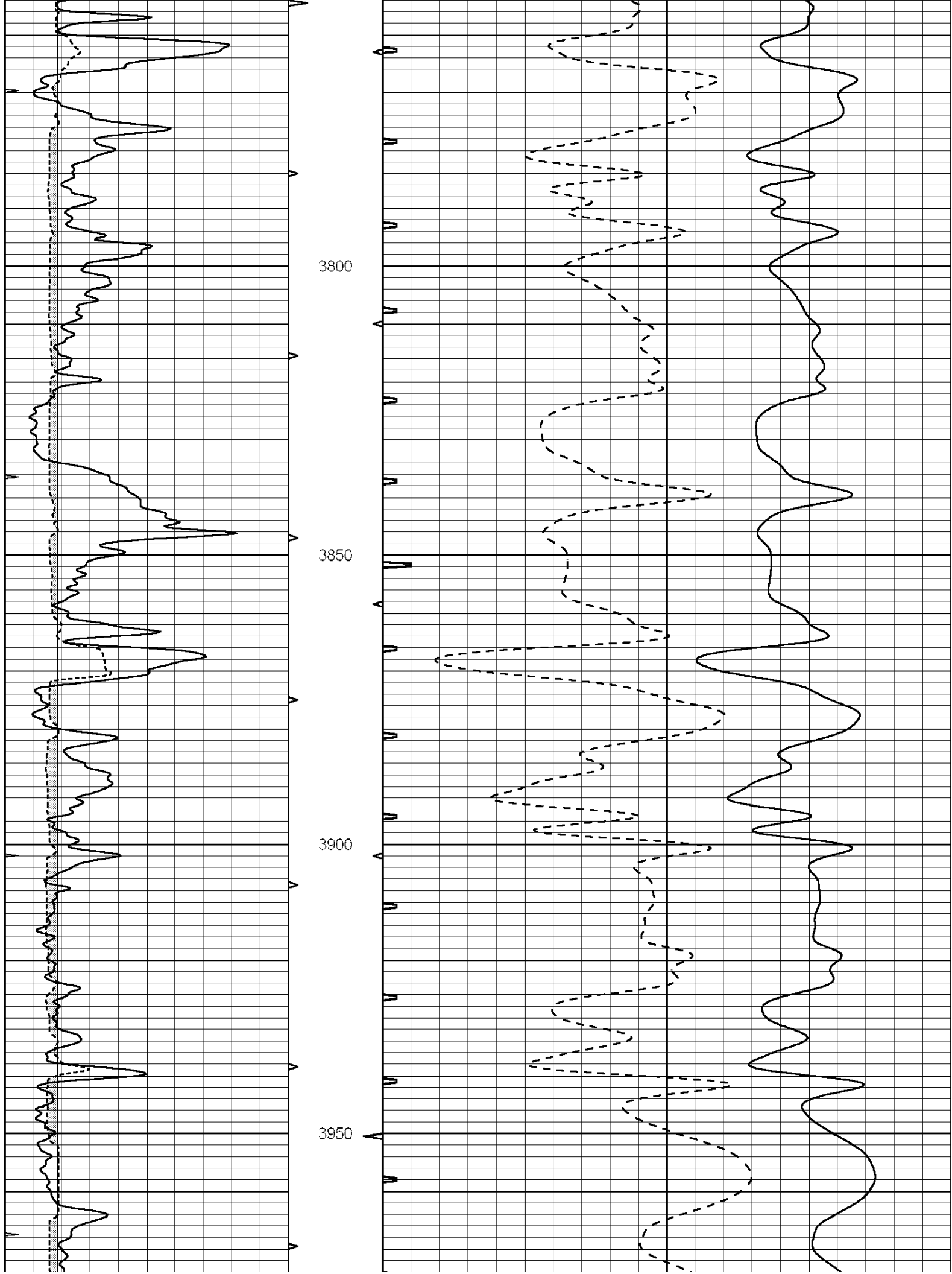


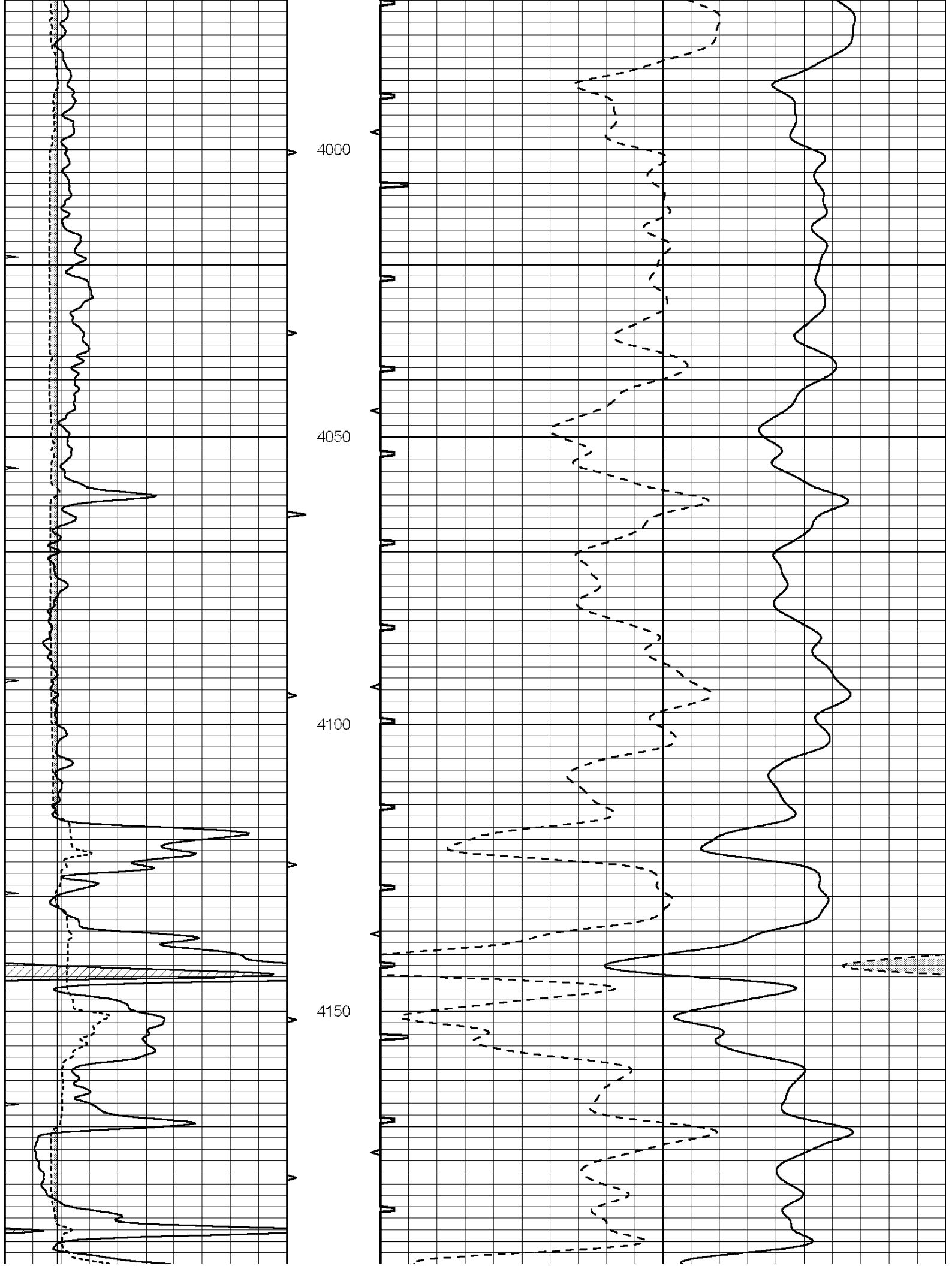


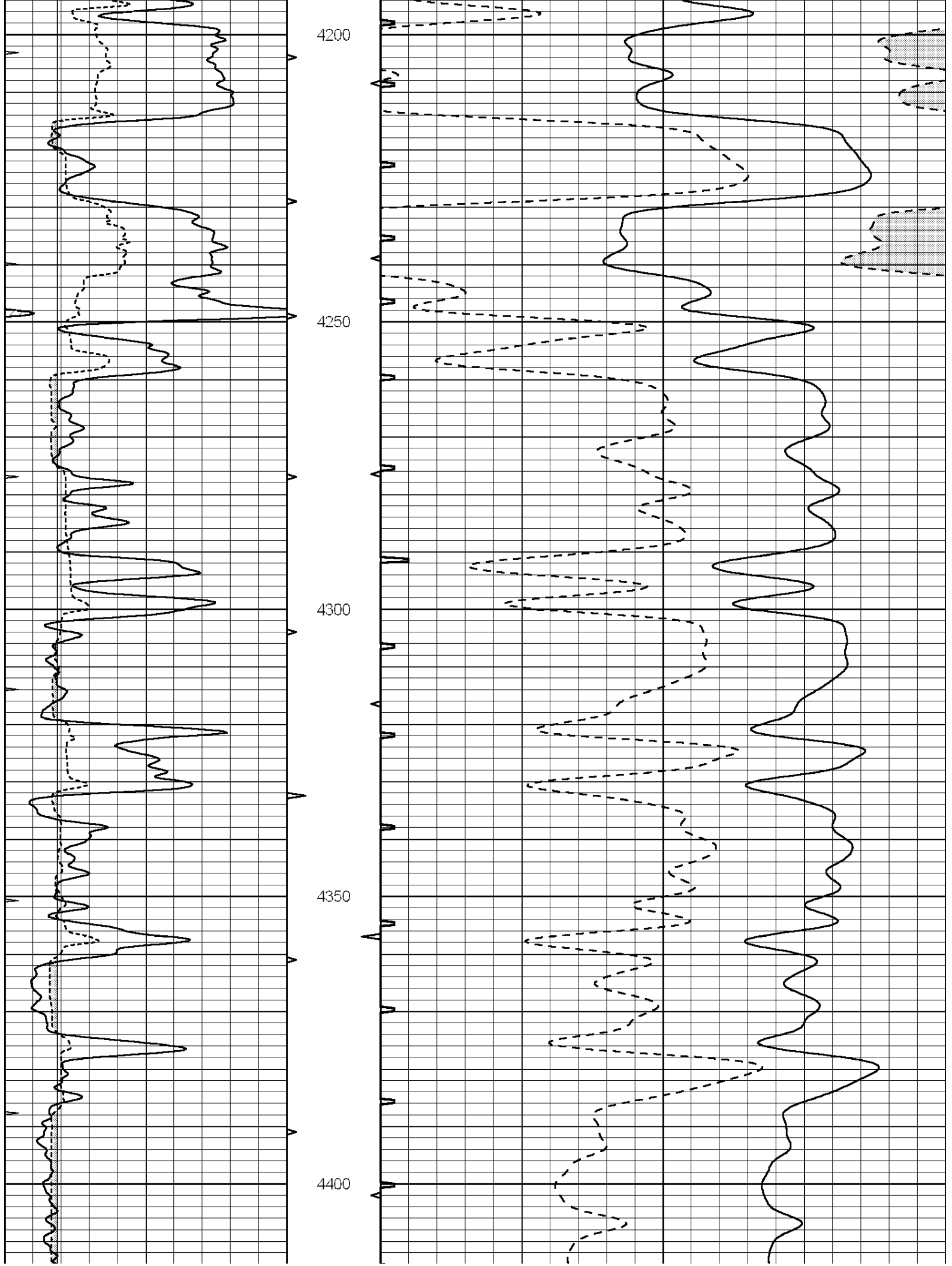


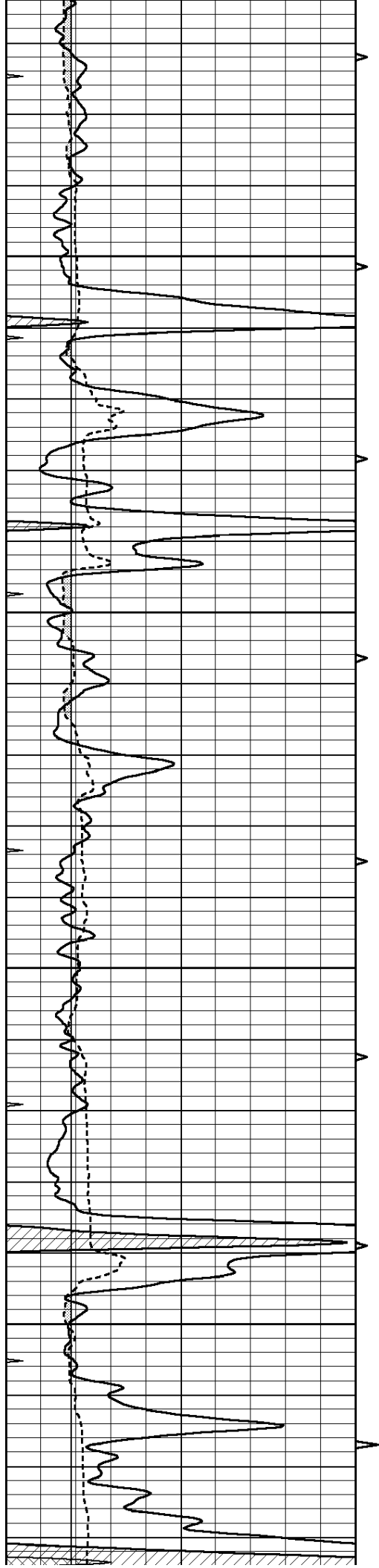










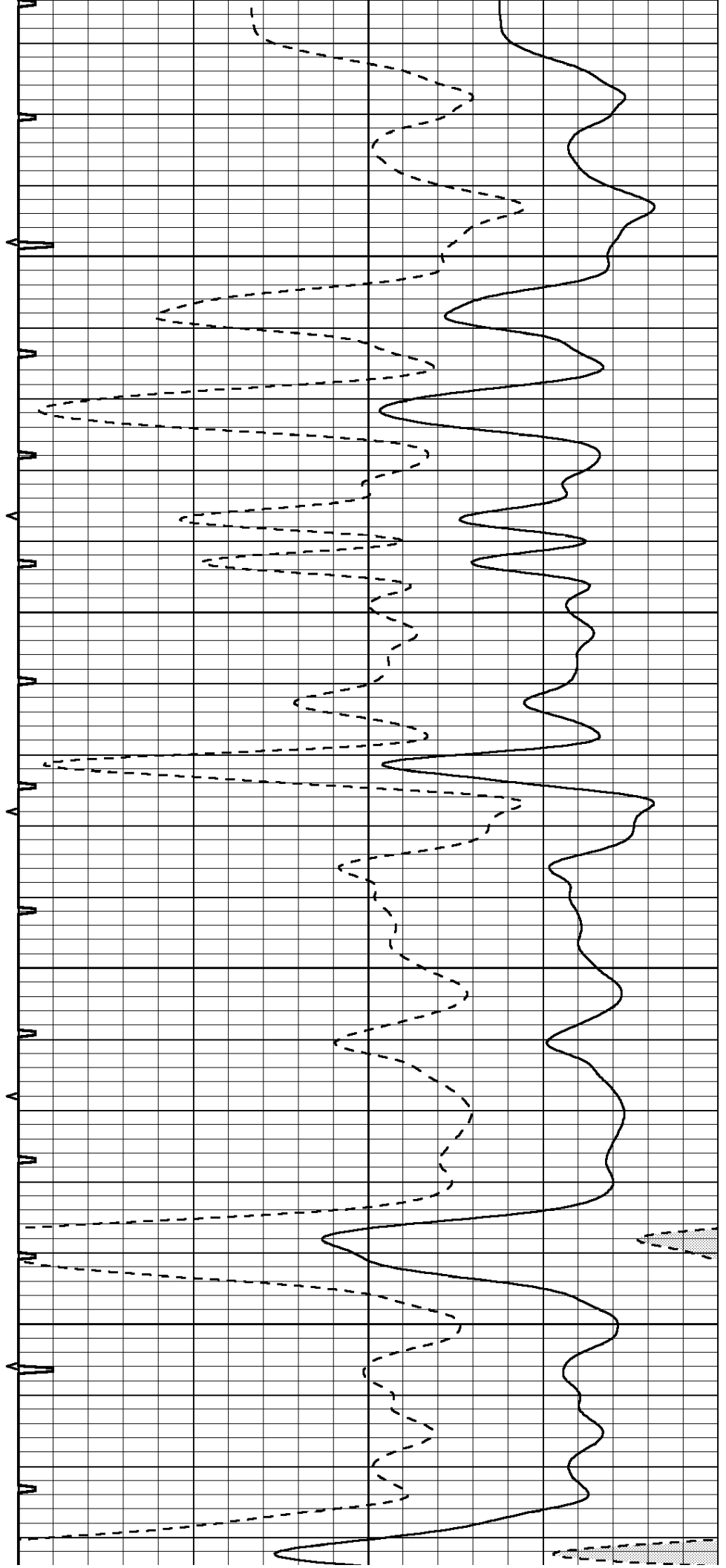


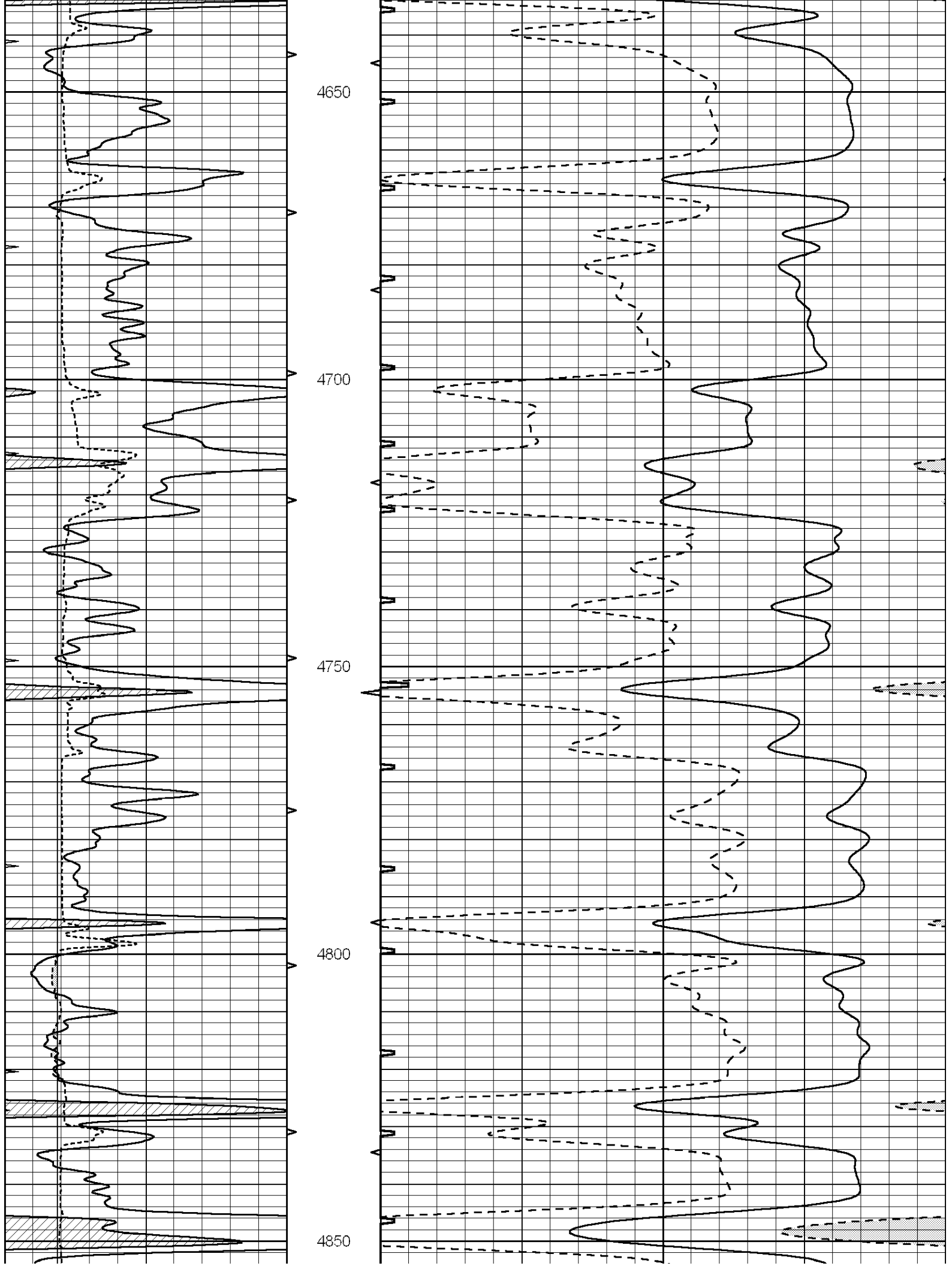
4450

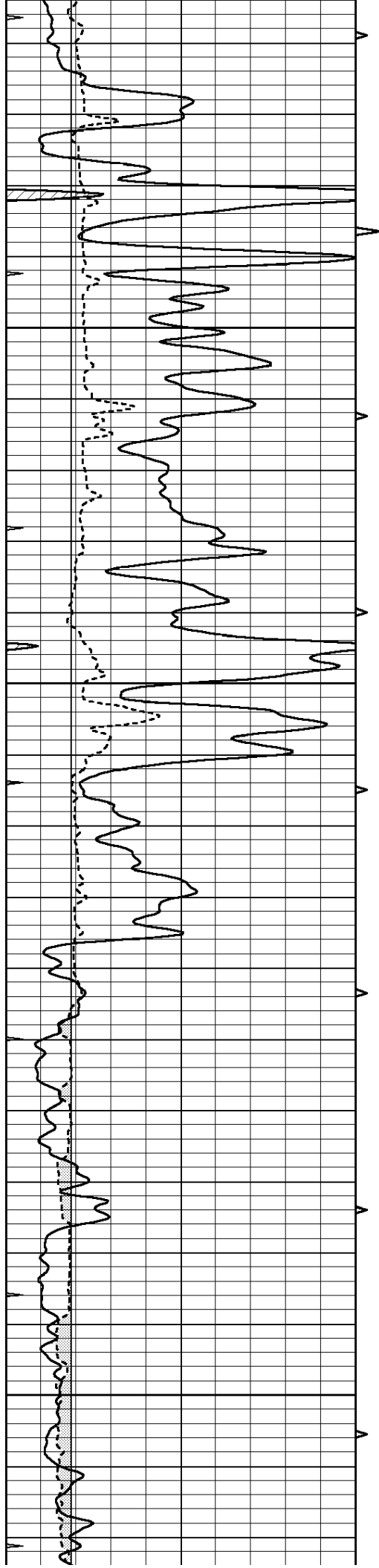
4500

4550

4600





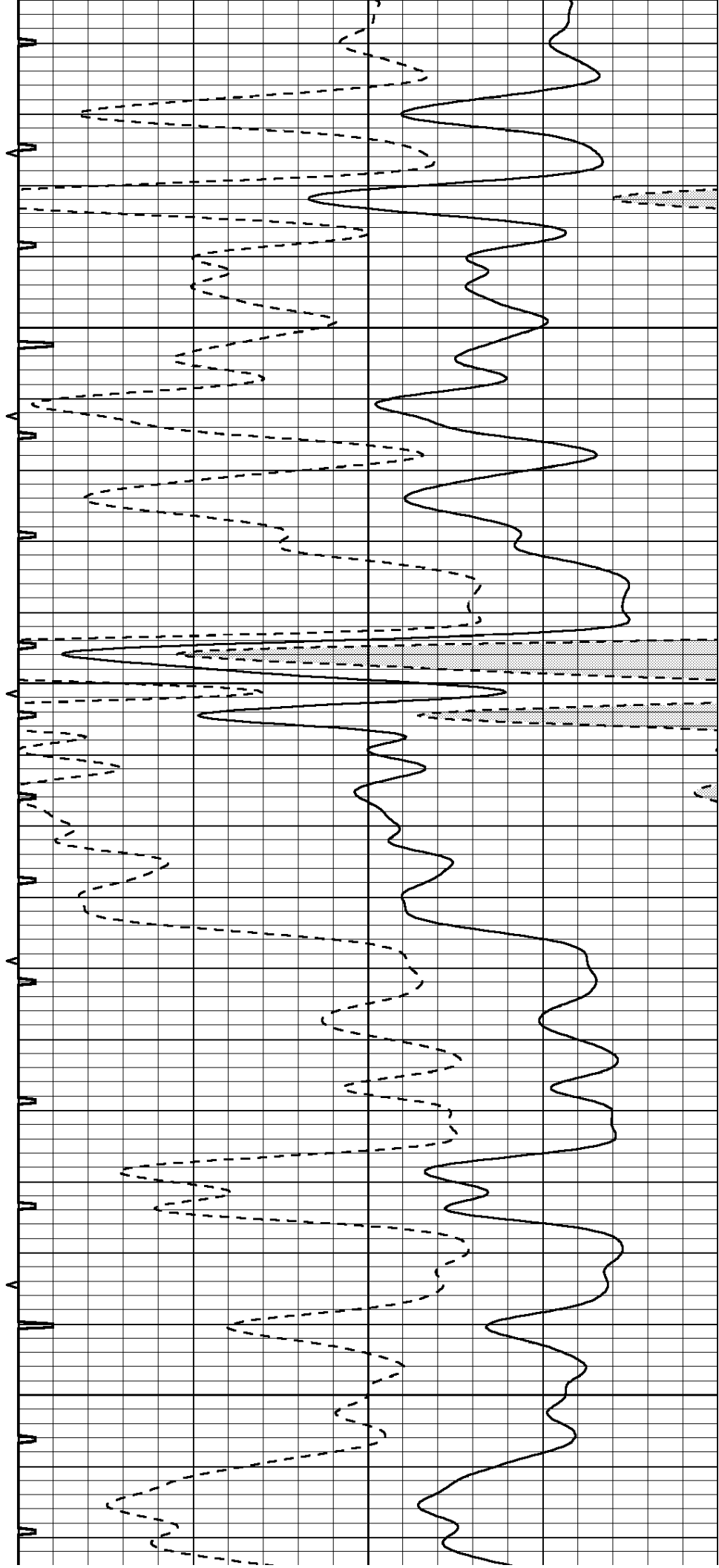


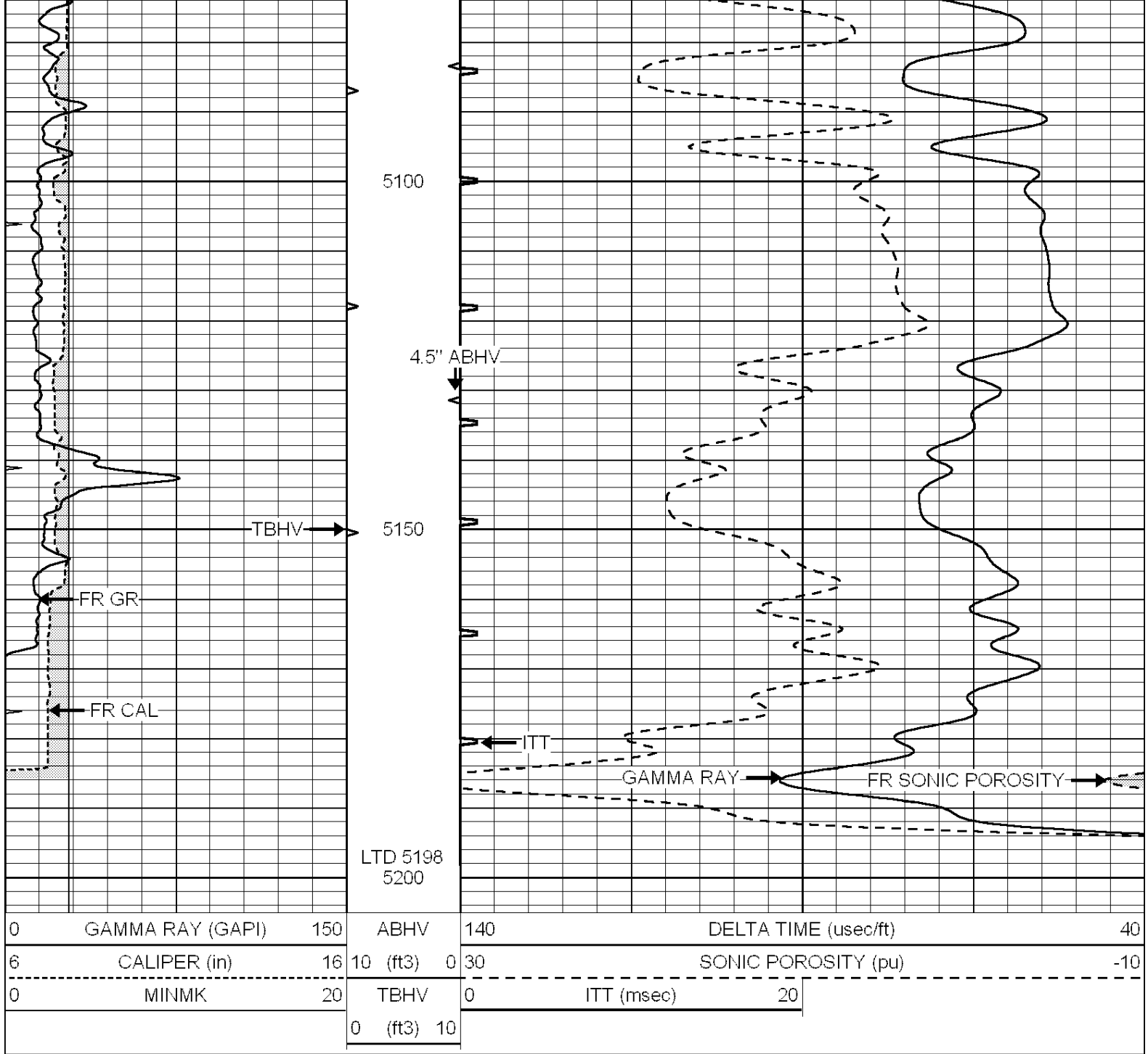
4900

4950

5000

5050





0	GAMMA RAY (GAPI)	150	ABHV	140	DELTA TIME (usec/ft)	40
6	CALIPER (in)	16	10 (ft3)	0 30	SONIC POROSITY (pu)	-10
0	MINMK	20	TBHV	0	ITT (msec)	20
			0 (ft3)	10		

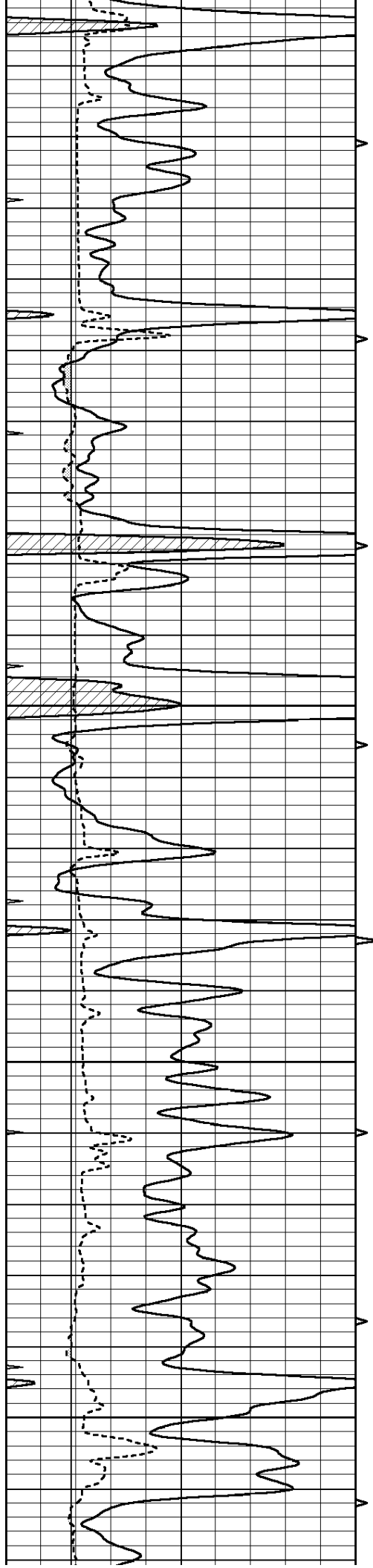


REPEAT SECTION

Database File: 010041pe.db
 Dataset Pathname: pass6.6
 Presentation Format: slt
 Dataset Creation: Tue Jan 08 02:32:23 2013 by Calc SOC 120430
 Charted by: Depth in Feet scaled 1:240

0	GAMMA RAY (GAPI)	150	ABHV	140	DELTA TIME (usec/ft)	40
6	CALIPER (in)	16	10 (ft3)	0 30	SONIC POROSITY (pu)	-10
0	MINMK	20	TBHV	0	ITT (msec)	20
			0 (ft3)	10		

4750

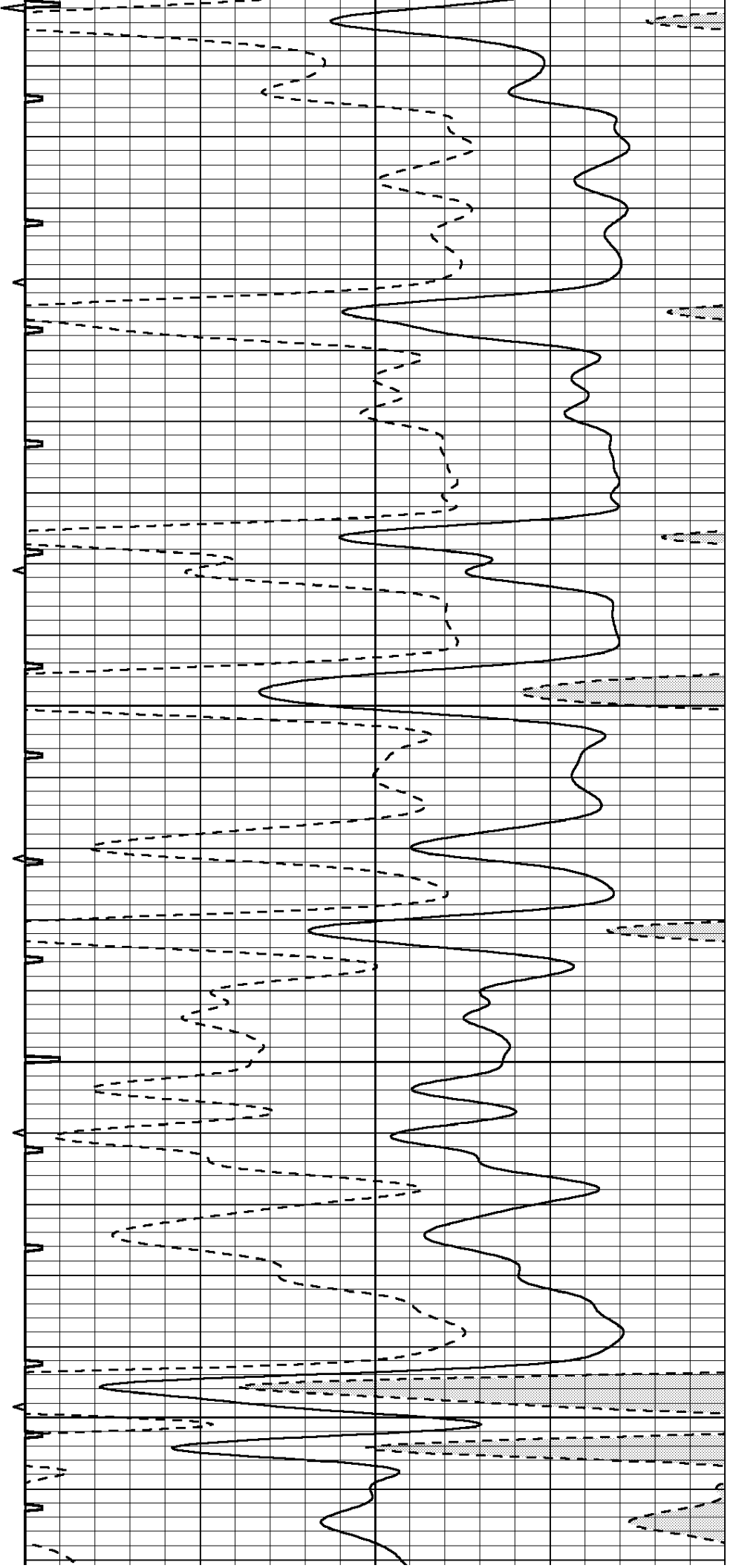


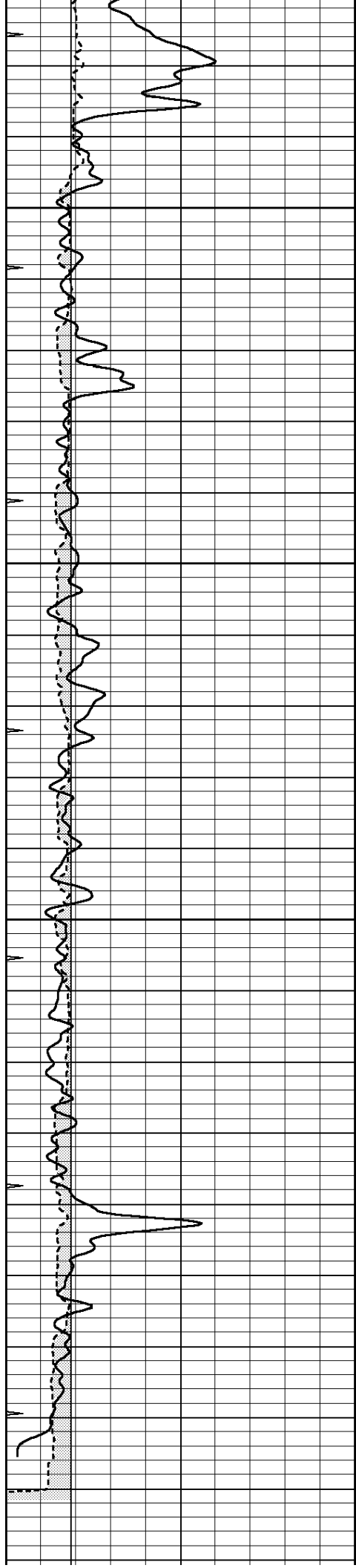
4800

4850

4900

4950





5000

5050

5100

5150

