



**COMPLETION  
& PRODUCTION  
SERVICES CO.**

**DUAL INDUCTION  
LOG**

Company VINCENT OIL CORPORATION  
Well PETERS #1-24  
Field WILDCAT  
County FORD  
State KANSAS

Company VINCENT OIL CORPORATION  
Well PETERS #1-24  
Field WILDCAT  
County FORD State KANSAS

Location: API # : 15-057-20868-0000  
1555' FNL & 2280' FWL  
SEC 24 TWP 27S RGE 24W  
Permanent Datum GROUND LEVEL Elevation 2459  
Log Measured From KELLY BUSHING 10' A.G.L.  
Drilling Measured From KELLY BUSHING  
Other Services  
CDL/CNL/PE  
MEL/SONIC  
Elevation  
K.B. 2469  
D.F. 2467  
G.L. 2459

Date	1/7/13
Run Number	ONE
Depth Driller	5200
Depth Logger	5198
Bottom Logged Interval	5196
Top Log Interval	00
Casing Driller	8 5/8" @ 558'
Casing Logger	558
Bit Size	7 7/8"
Type Fluid in Hole	CHEMICAL MUD
Density / Viscosity	9.2/54
pH / Fluid Loss	10.5/9.2
Source of Sample	FLOWLINE
Rim @ Meas. Temp	.650 @ 100F
Rmf @ Meas. Temp	.488 @ 100F
Rmc @ Meas. Temp	.780 @ 100F
Source of Rmf / Rmc	MEASUREMENT
Rim @ BHT	.512 @ 127F
Time Circulation Stopped	3 HOURS
Time Logger on Bottom	10:00 P.M.
Maximum Recorded Temperature	127F
Equipment Number	4854
Location	HAYS, KANSAS
Recorded By	JEFF LUEBBERS
Witnessed By	TOM DUDGEON

<<< Fold Here >>>

All interpretations are opinions based on inferences from electrical or other measurements and we cannot and do not guarantee the accuracy or correctness of any interpretation, and we shall not, except in the case of gross or willful negligence on our part, be liable or responsible for any loss, costs, damages, or expenses incurred or sustained by anyone resulting from any interpretation made by any of our officers, agents or employees. These interpretations are also subject to our general terms and conditions set out in our current Price Schedule.

**Comments**

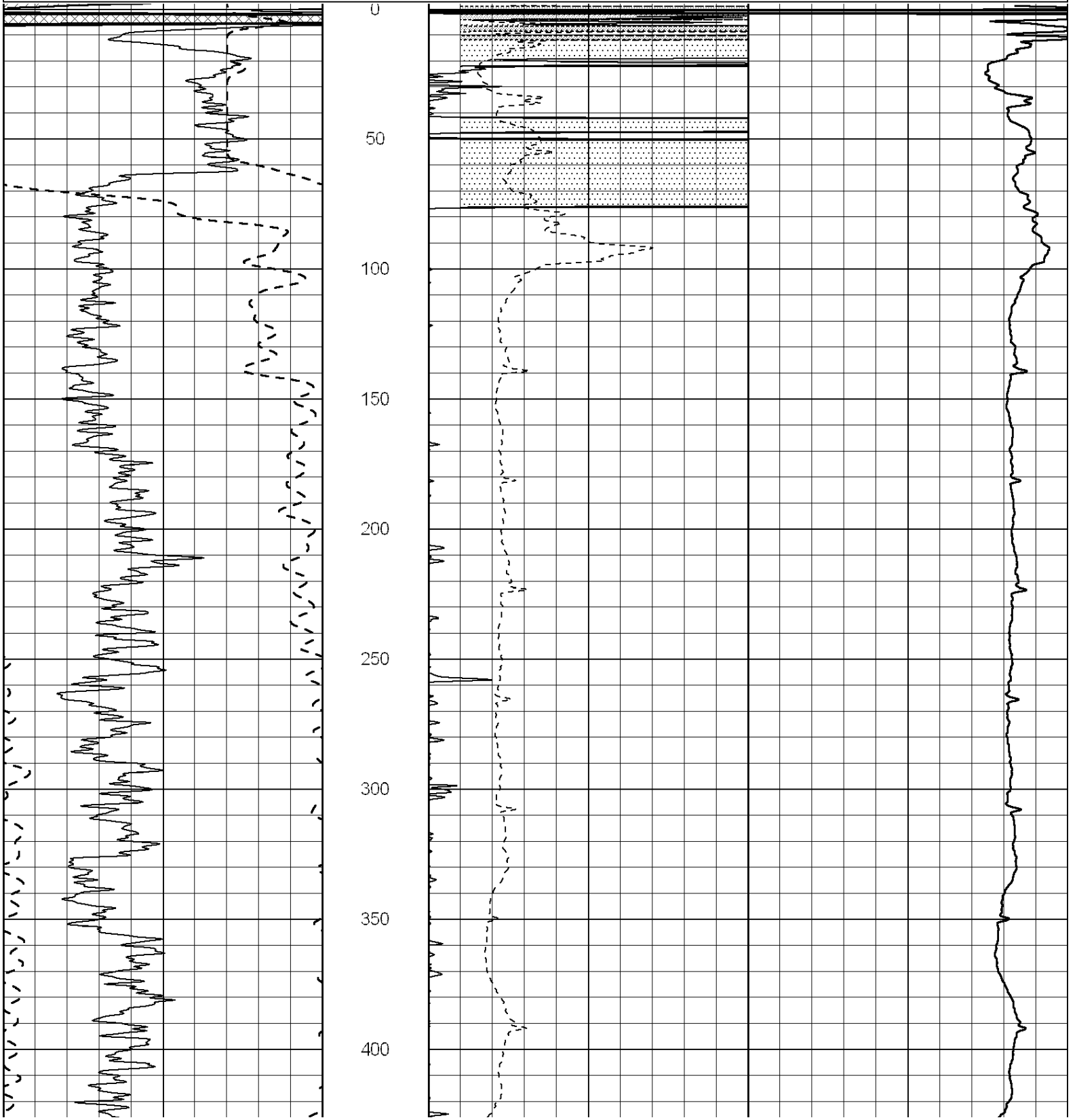
THANK YOU FOR USING "NABORS" HAYS, KANSAS (785) 628-6395  
DIRECTIONS  
FT. DODGE, KS. 1E. ON HWY 400 TO "RD. 117", 3S., E. INTO JUST PAST SMALL BARN ON THE HILL



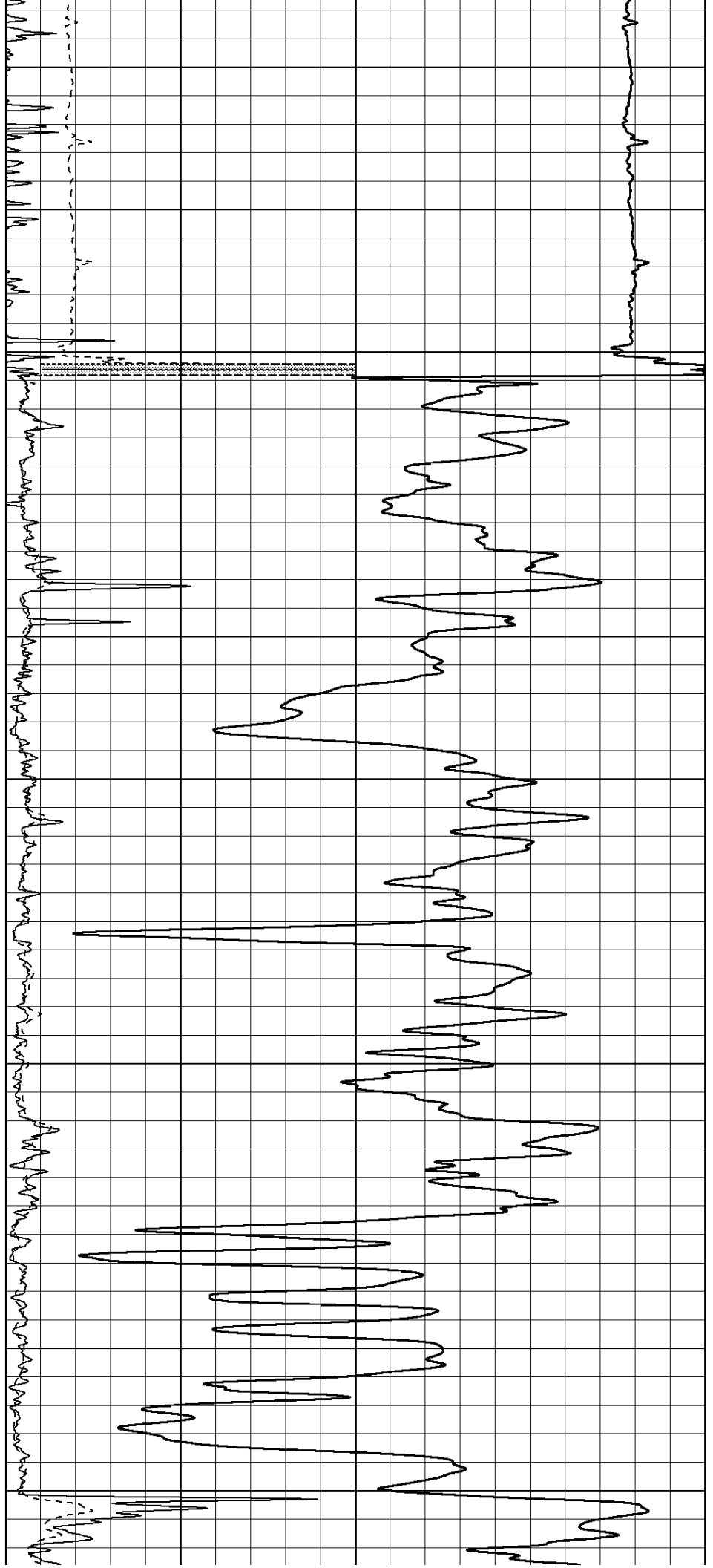
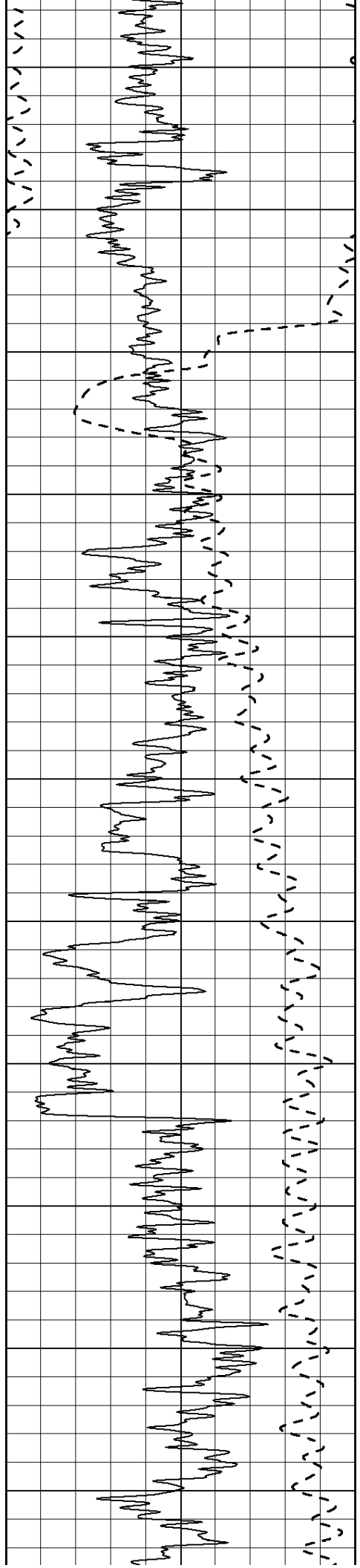
**MAIN SECTION**

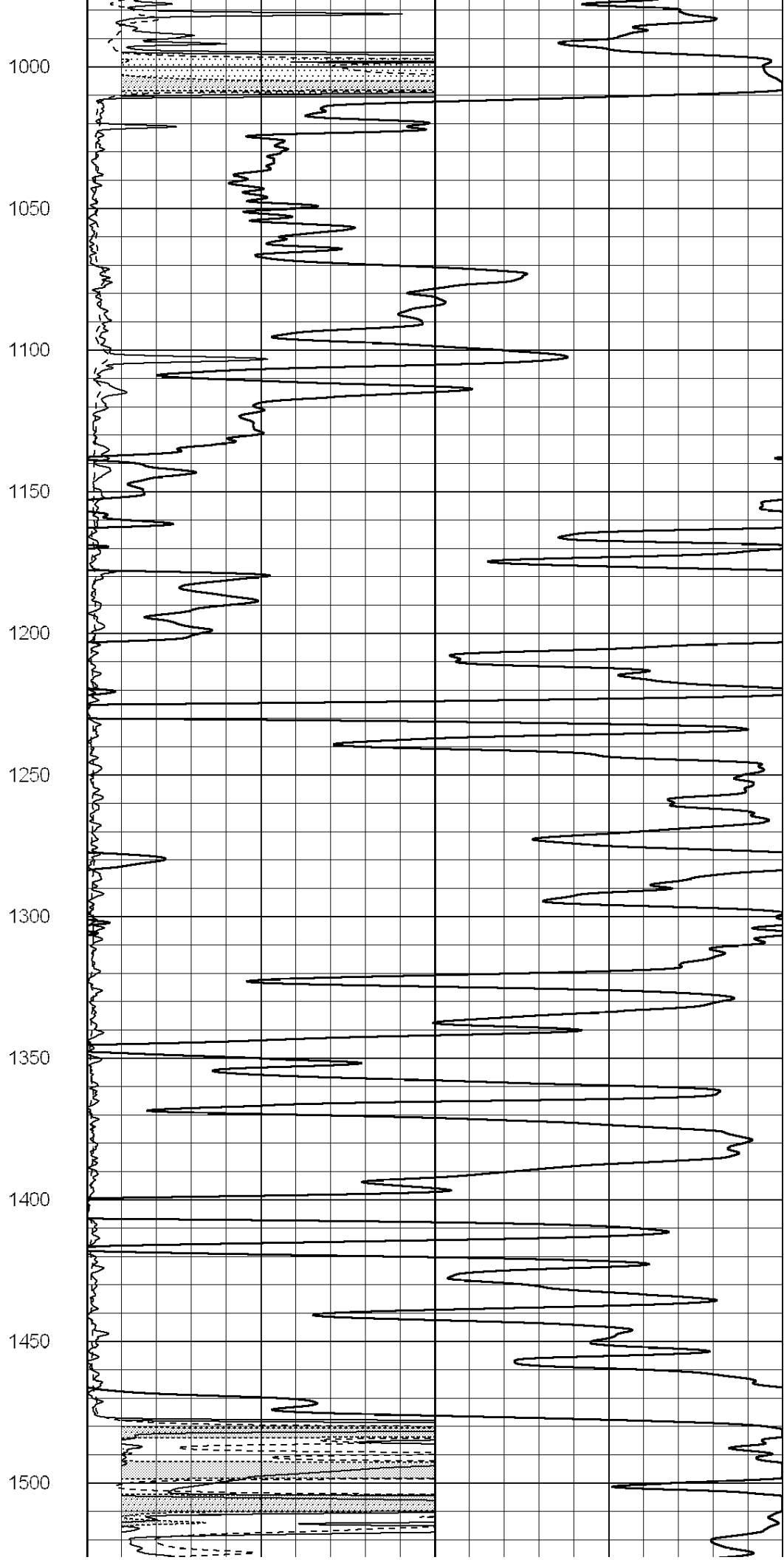
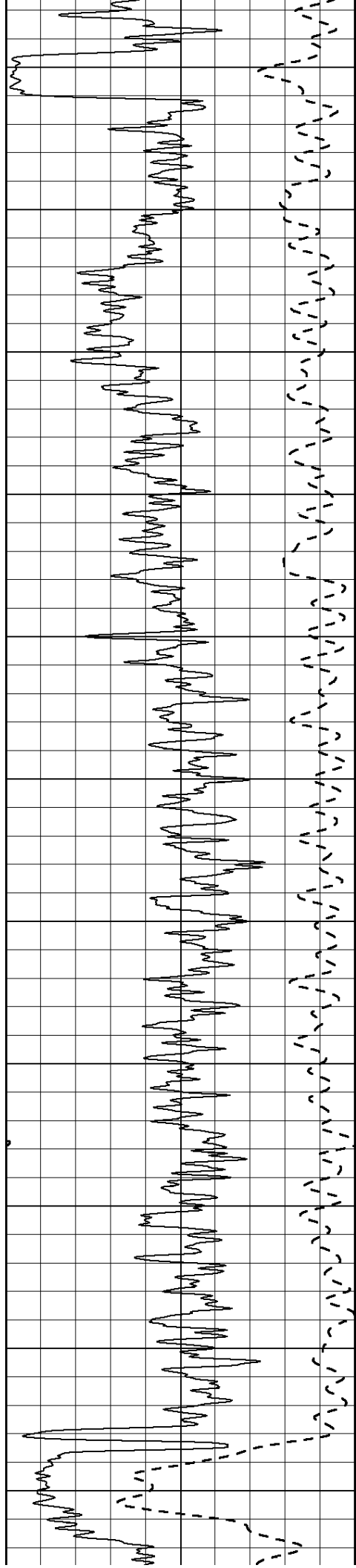
Database File: 010041pe.db  
 Dataset Pathname: pass3.5  
 Presentation Format: dil2  
 Dataset Creation: Mon Jan 07 23:45:16 2013 by Calc SOC 120430  
 Charted by: Depth in Feet scaled 1:600

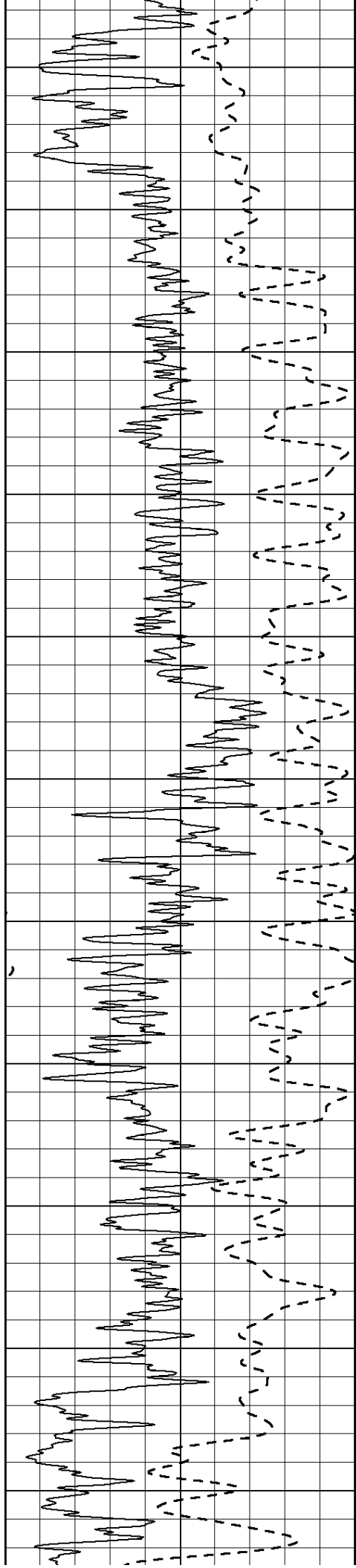
0	Gamma Ray (GAPI)	150	0	RLL3 (Ohm-m)	50
-100	SP (mV)	100	0	RILD (Ohm-m)	50
-----			-----		
			1000	CILD (mmho/m)	0
			50	RILD X10 (Ohm-m)	500
			50	RLL3 X10 (Ohm-m)	500



450  
500  
550  
600  
650  
700  
750  
800  
850  
900  
950







1550

1600

1650

1700

1750

1800

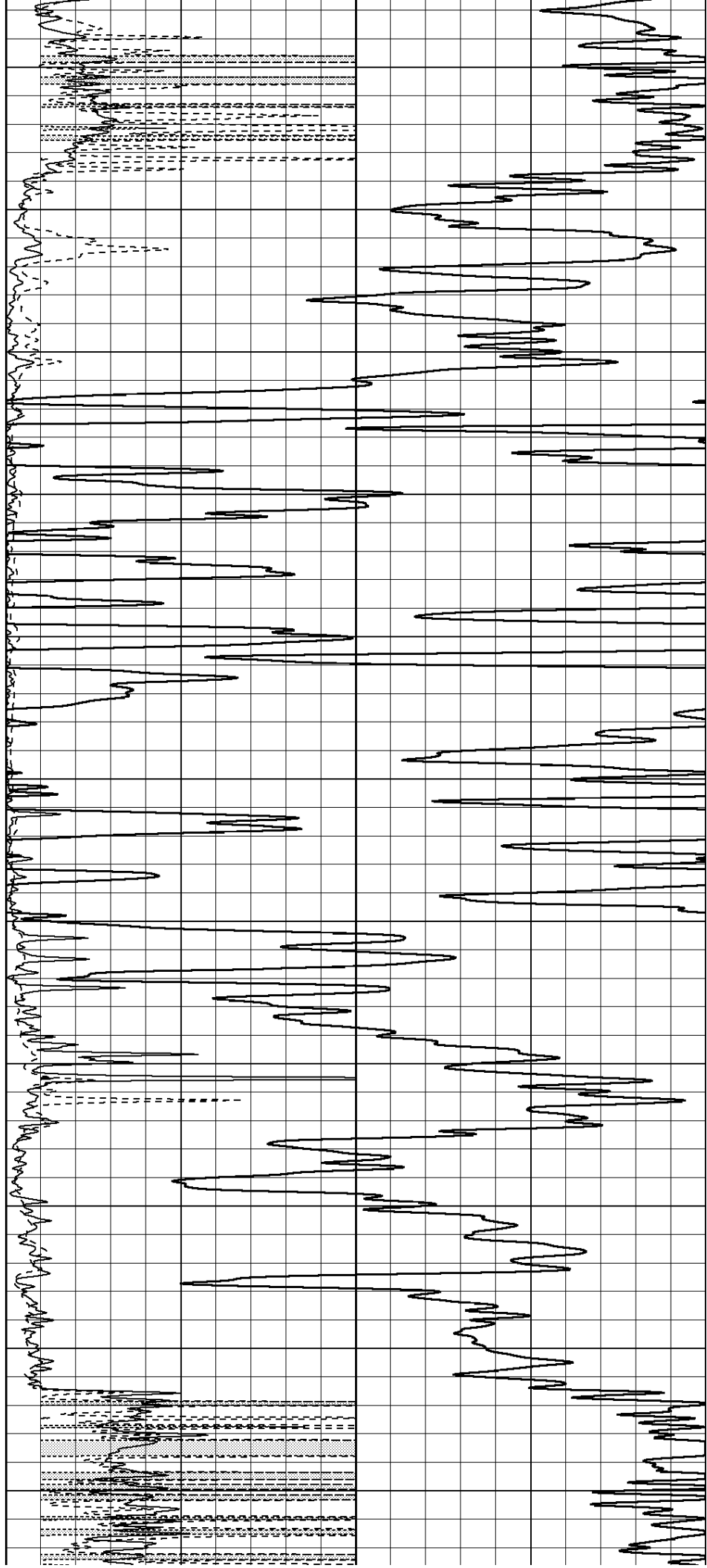
1850

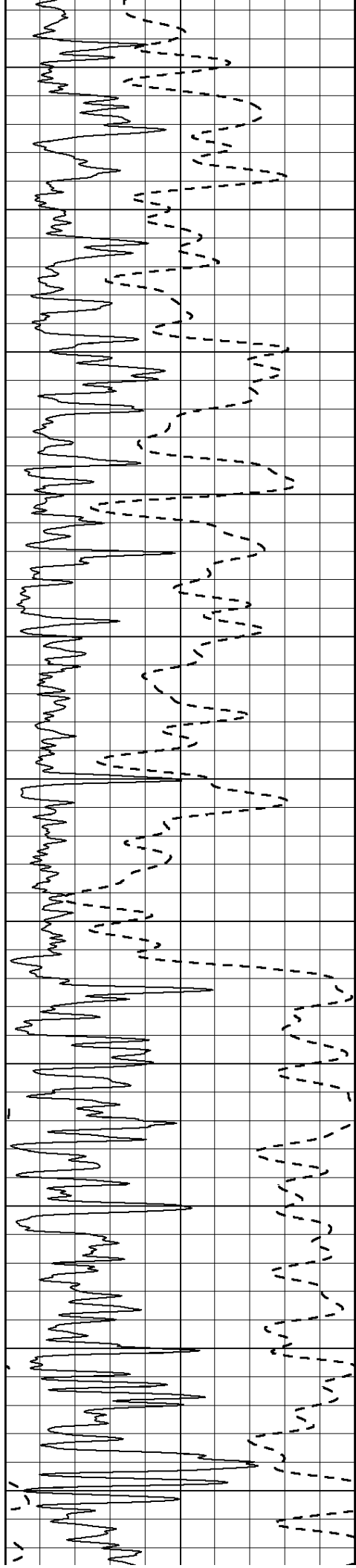
1900

1950

2000

2050





2100

2150

2200

2250

2300

2350

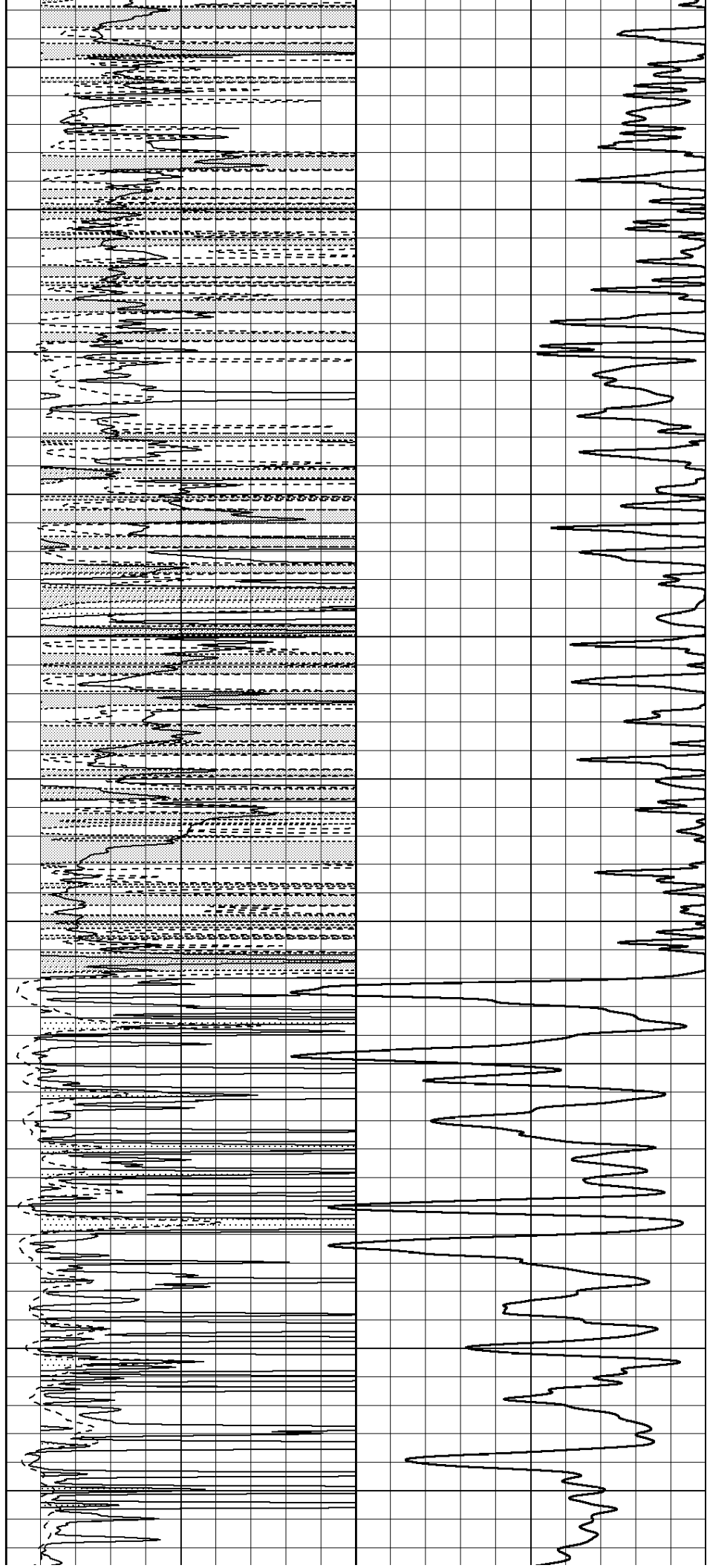
2400

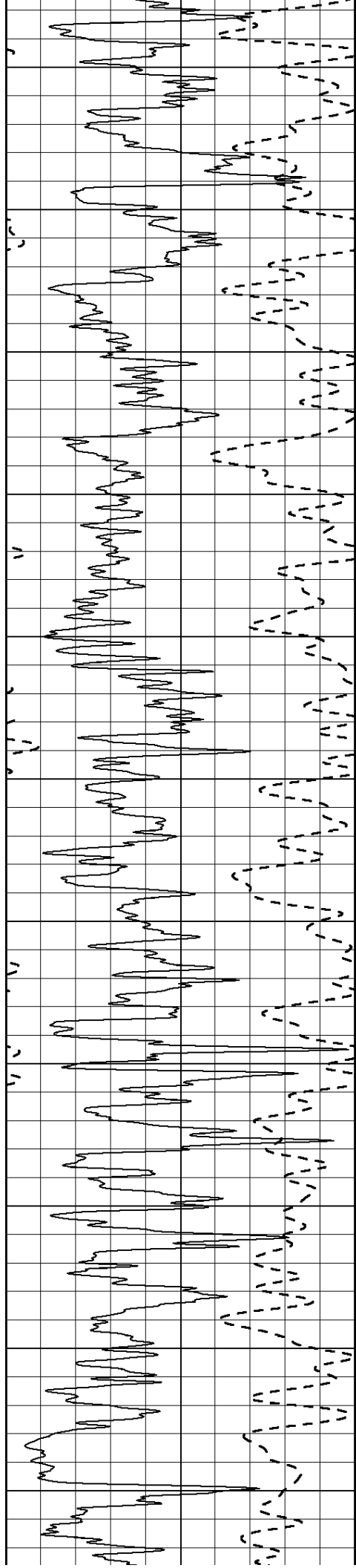
2450

2500

2550

2600





2650

2700

2750

2800

2850

2900

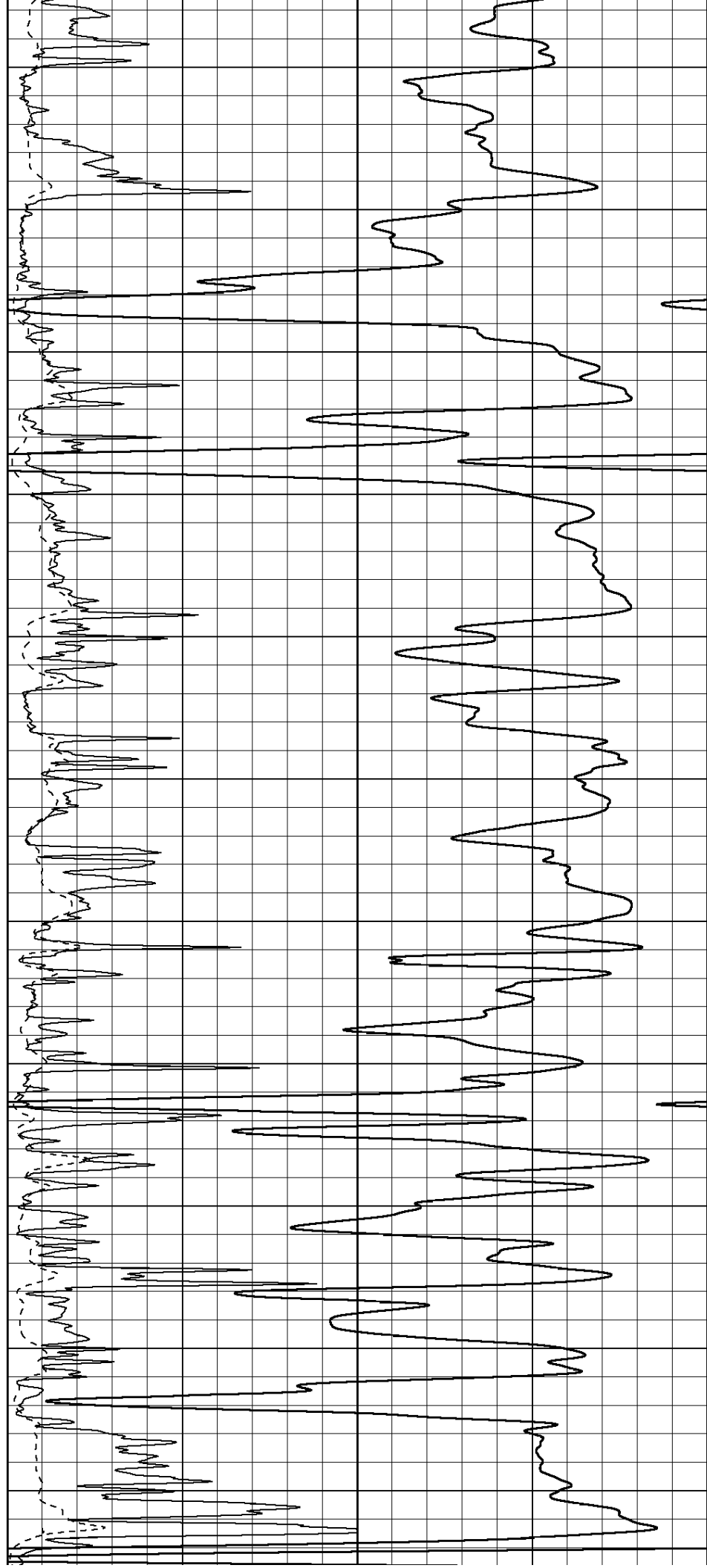
2950

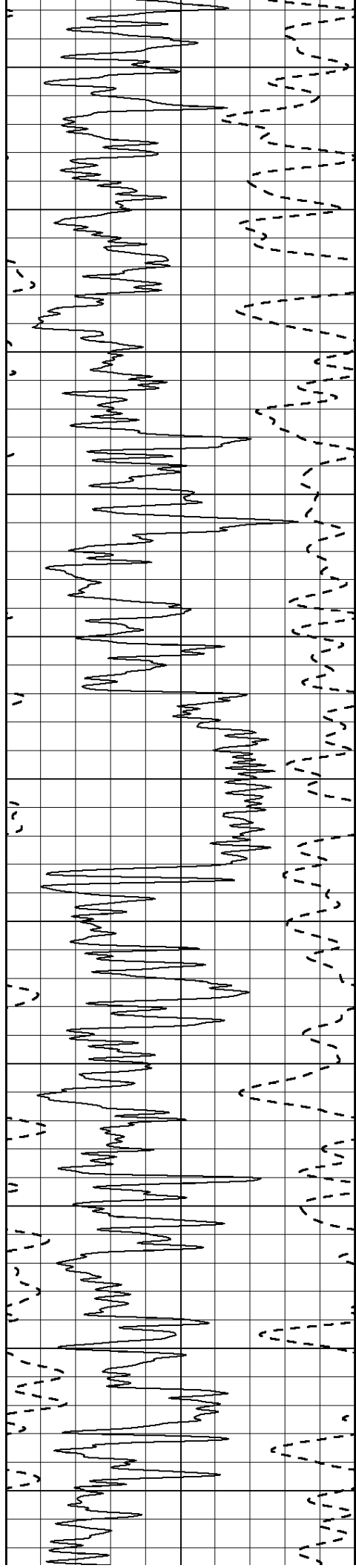
3000

3050

3100

3150





3200

3250

3300

3350

3400

3450

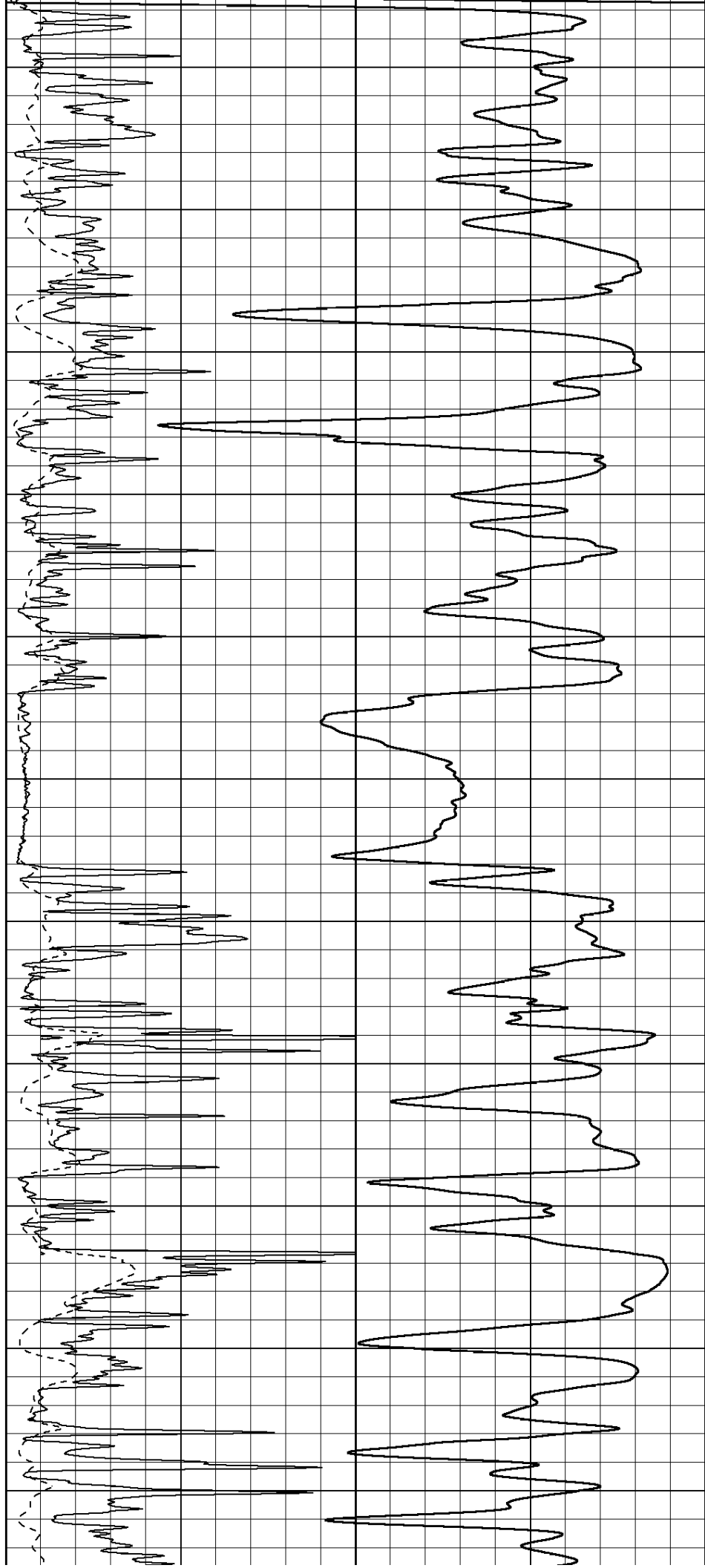
3500

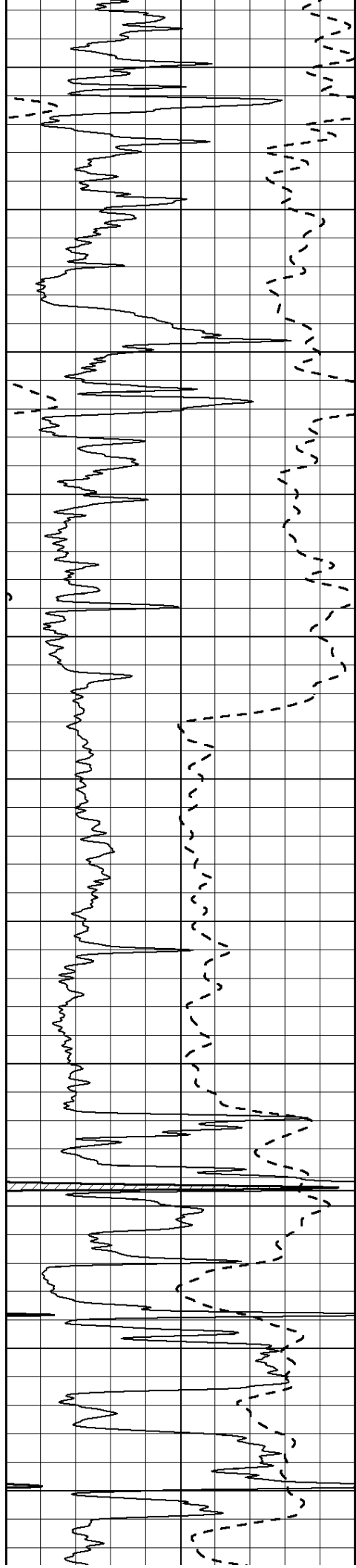
3550

3600

3650

3700





3750

3800

3850

3900

3950

4000

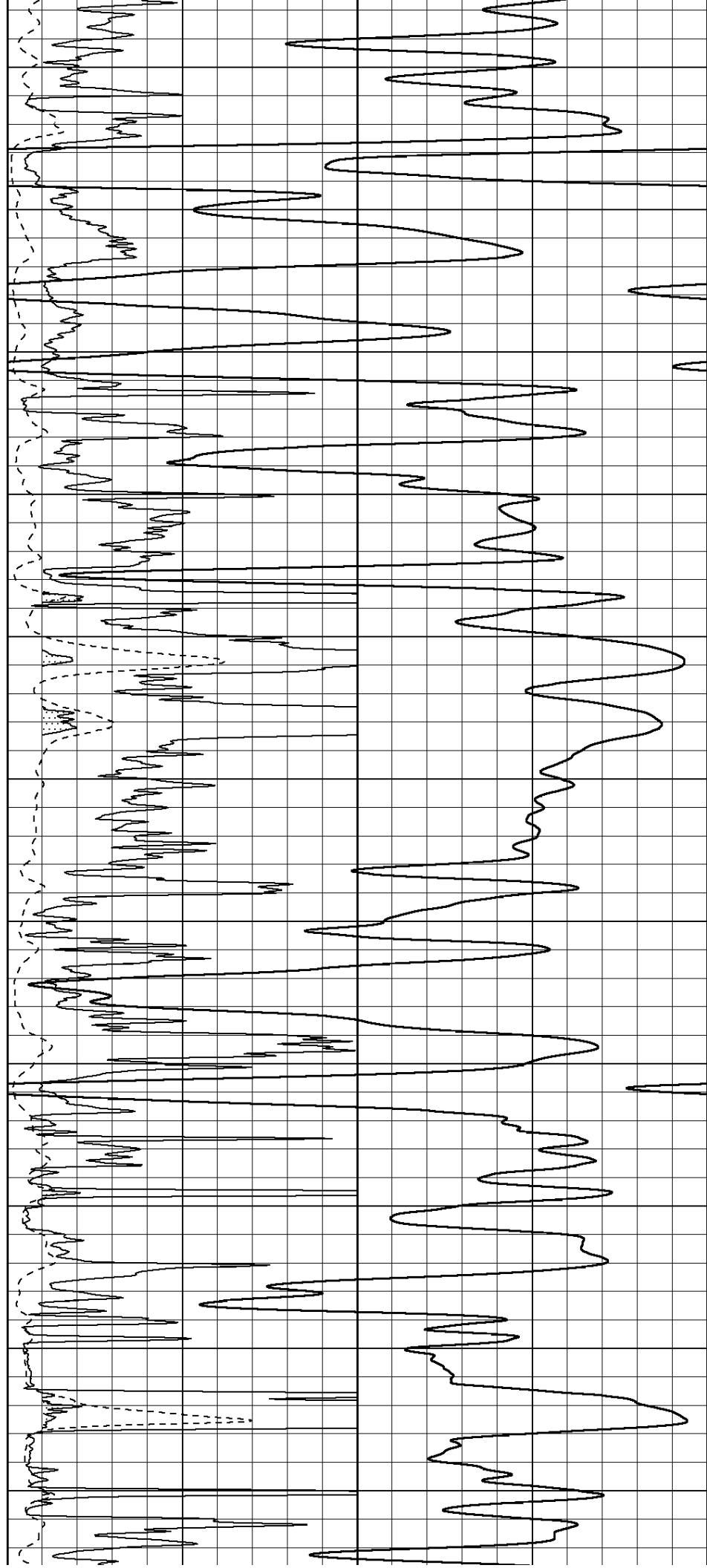
4050

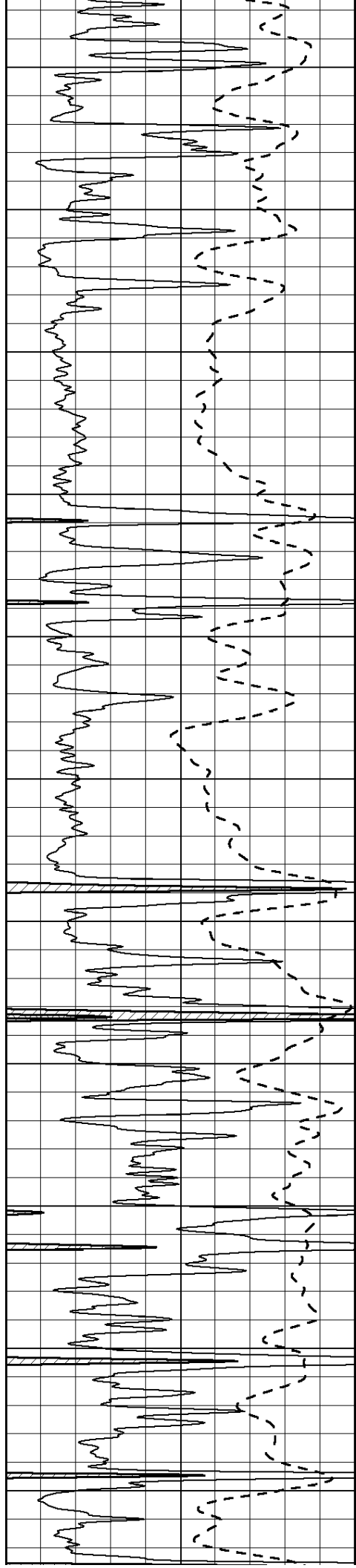
4100

4150

4200

4250





4300

4350

4400

4450

4500

4550

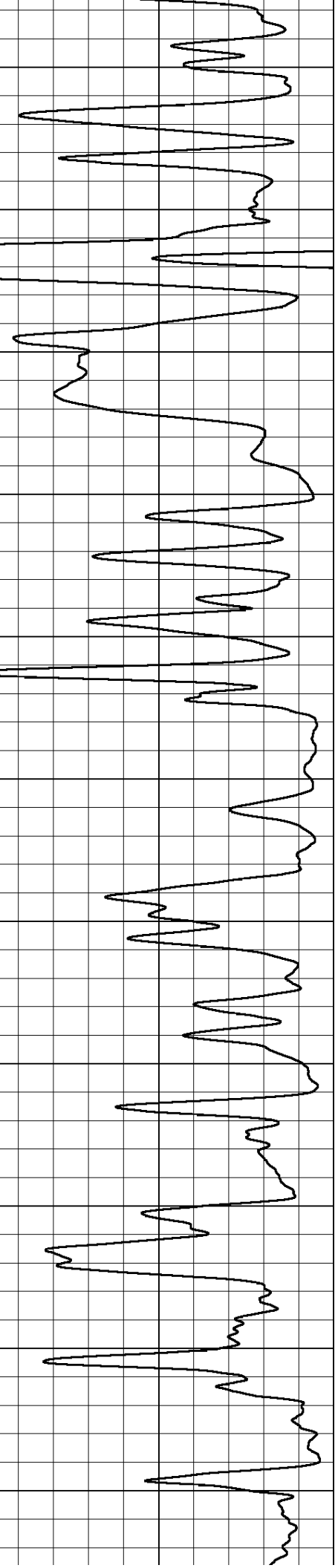
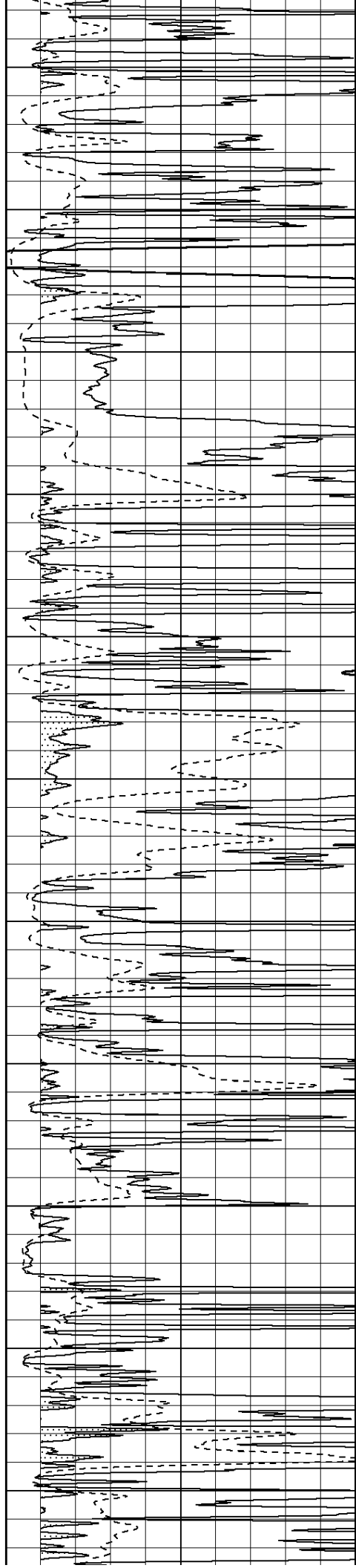
4600

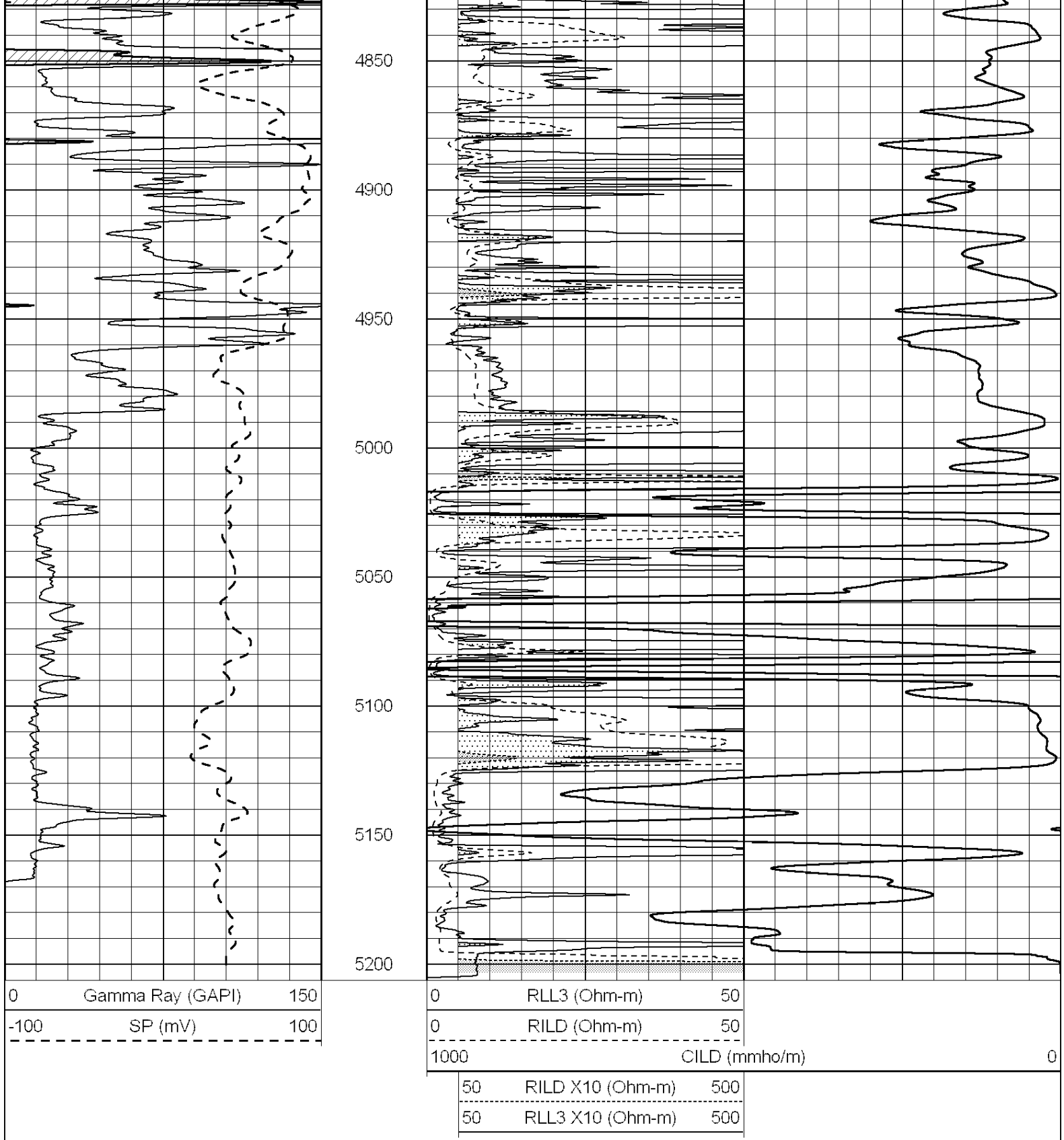
4650

4700

4750

4800



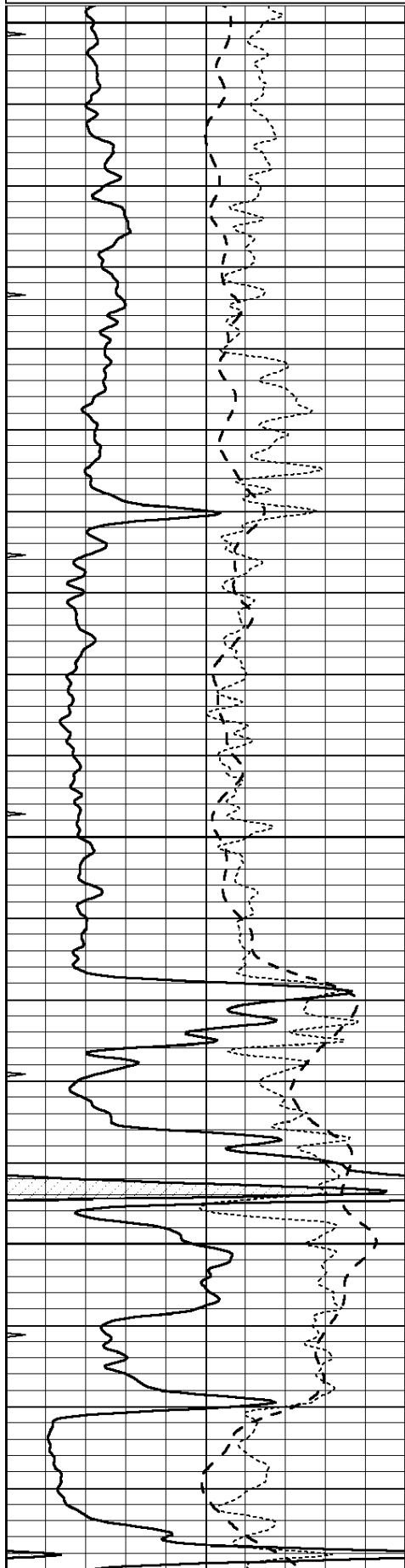


# MAIN SECTION

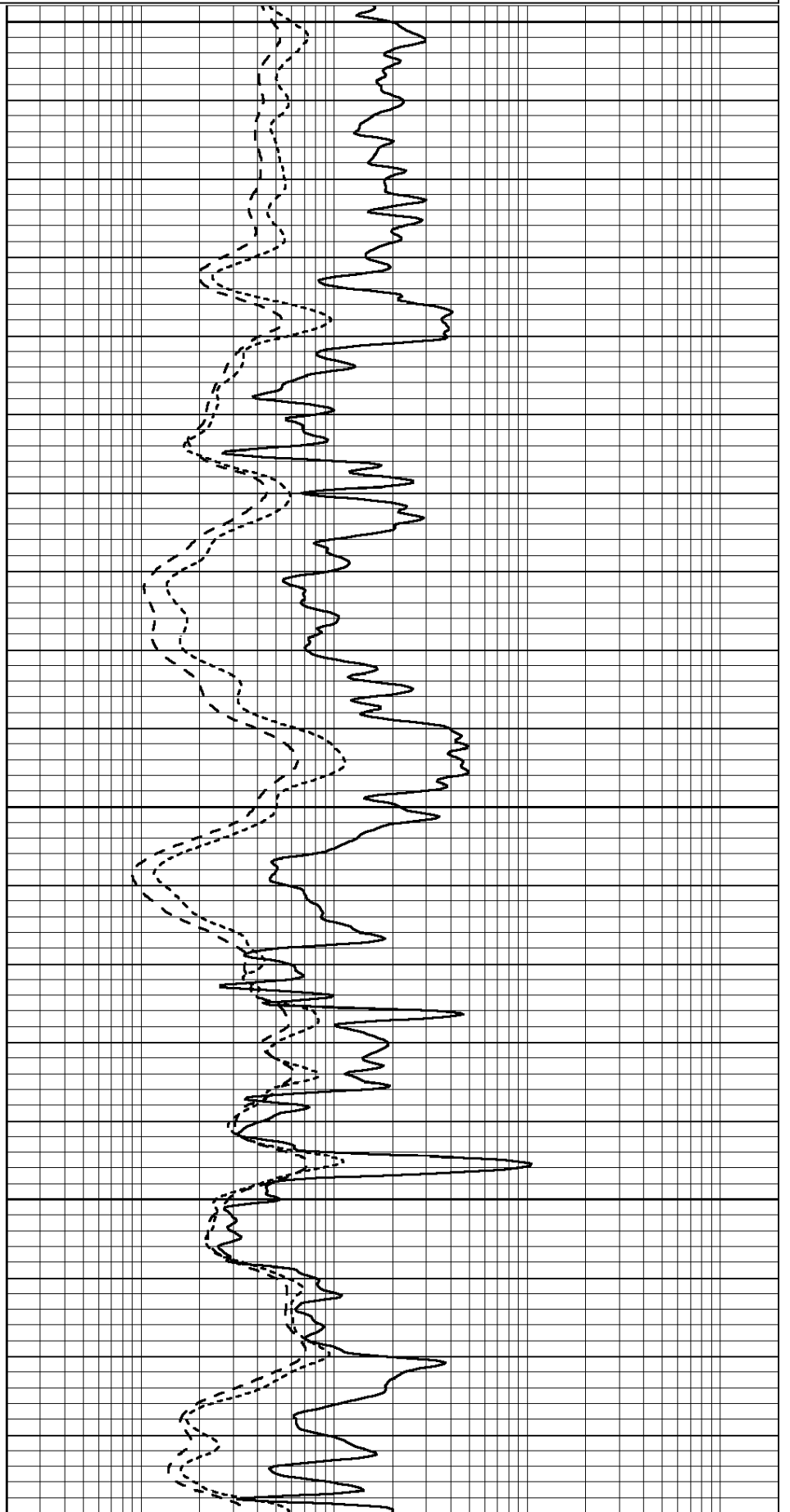
Database File: 010041pe.db  
 Dataset Pathname: pass3.5  
 Presentation Format: \_dil  
 Dataset Creation: Mon Jan 07 23:45:16 2013 by Calc SOC 120430  
 Charted by: Depth in Feet scaled 1:240

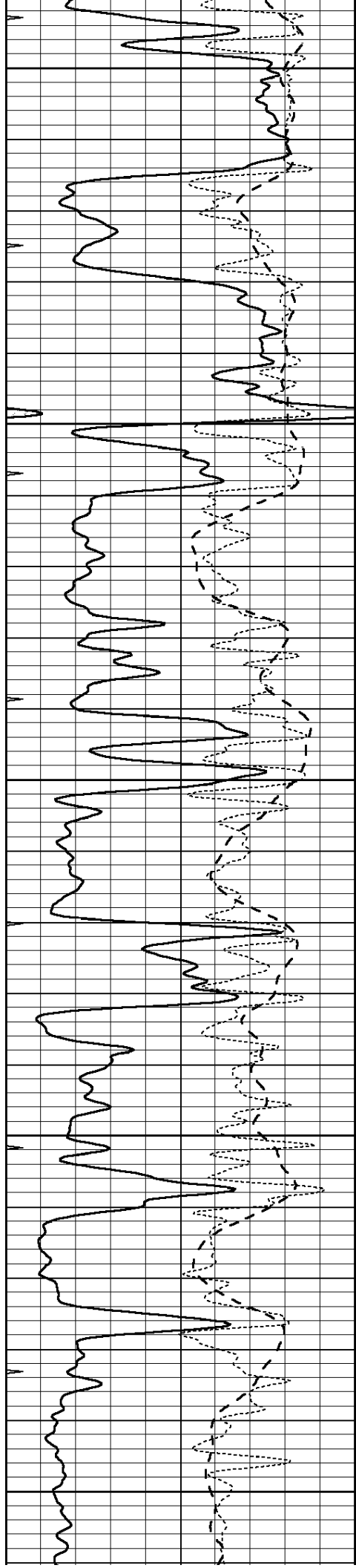
0	GAMMA RAY (GAPI)	150
-100	SP (mV)	100
-250	Rxo/Rt	50
0	MINMK	20

0.2	SHALLOW GUARD (Ohm-m)	2000
0.2	DEEP INDUCTION (Ohm-m)	2000
0.2	MEDIUM INDUCTION (Ohm-m)	2000



4000  
4050  
4100  
4150





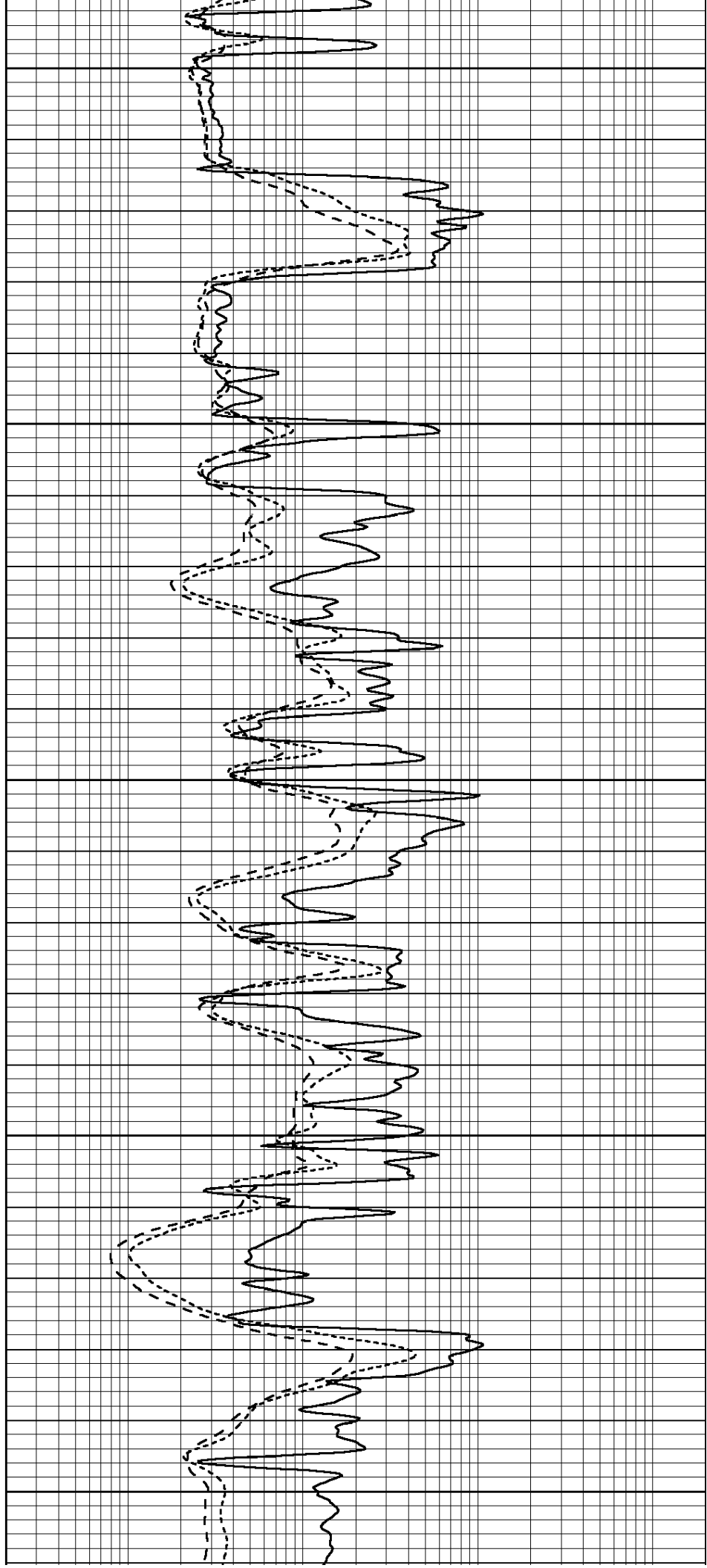
4200

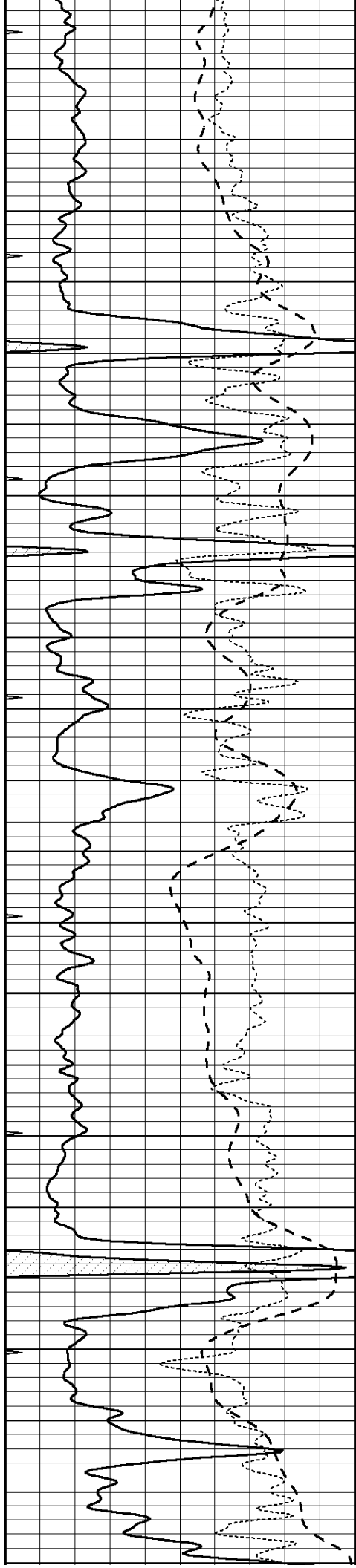
4250

4300

4350

4400



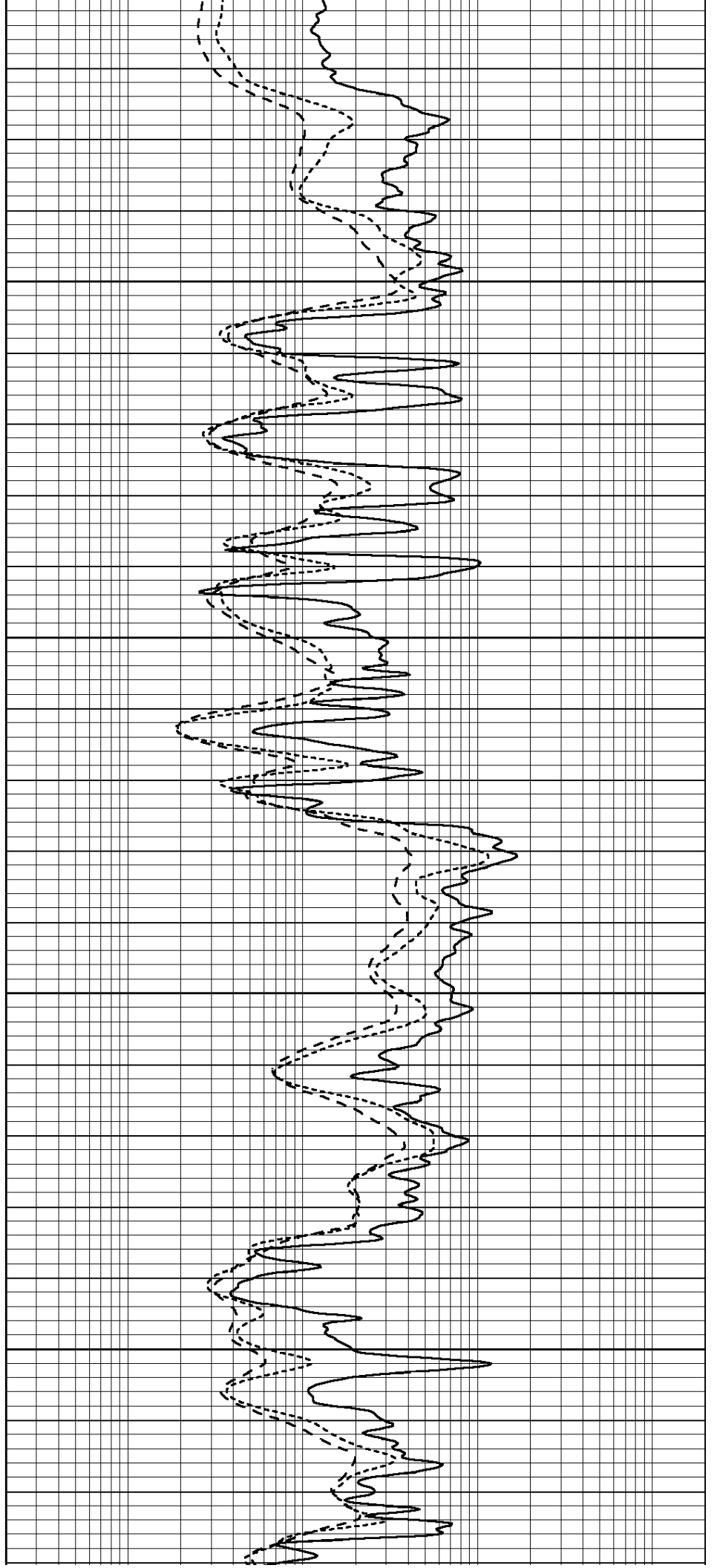


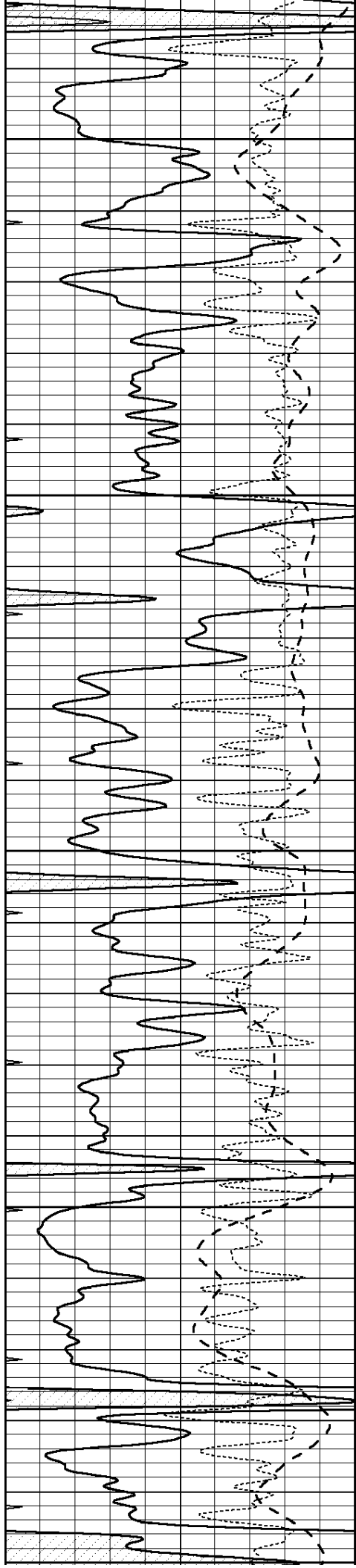
4450

4500

4550

4600





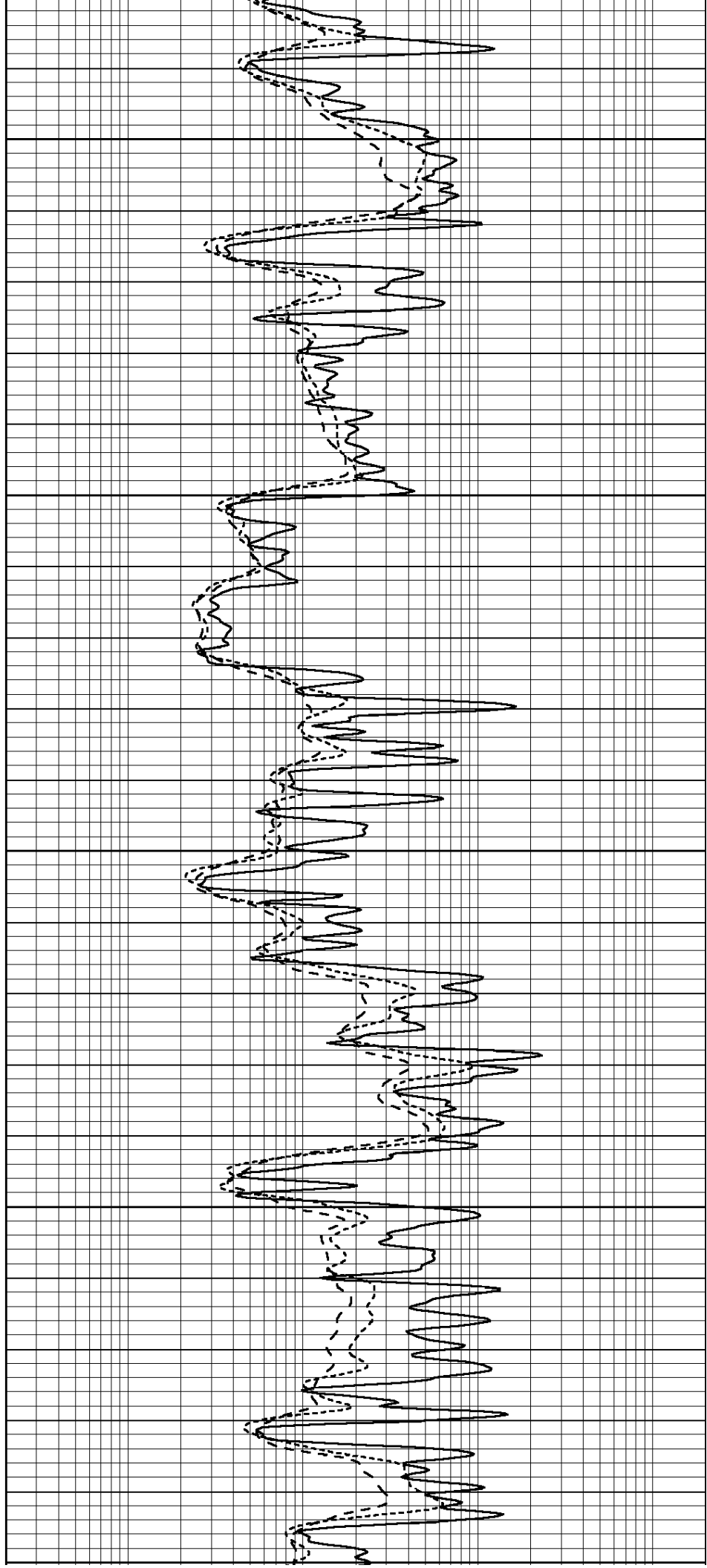
4650

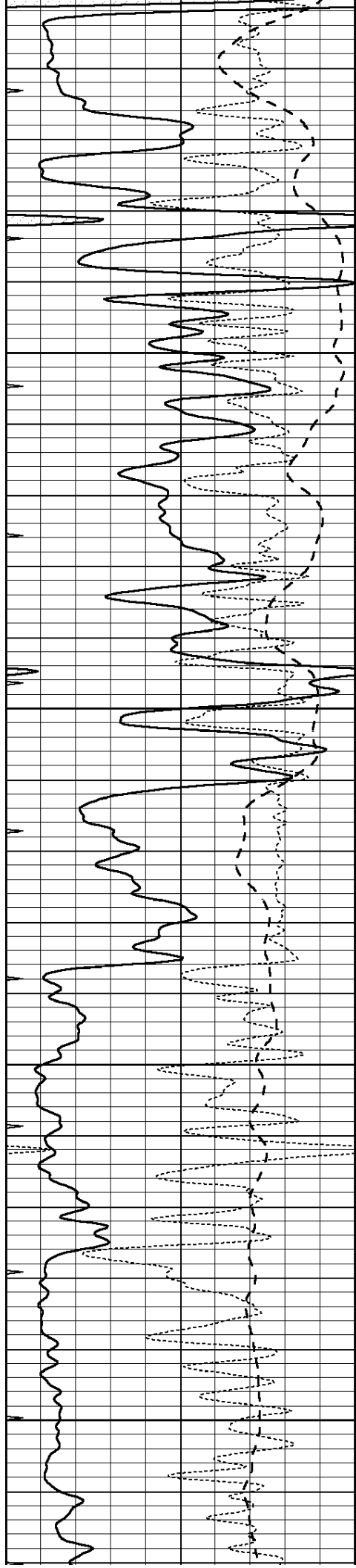
4700

4750

4800

4850



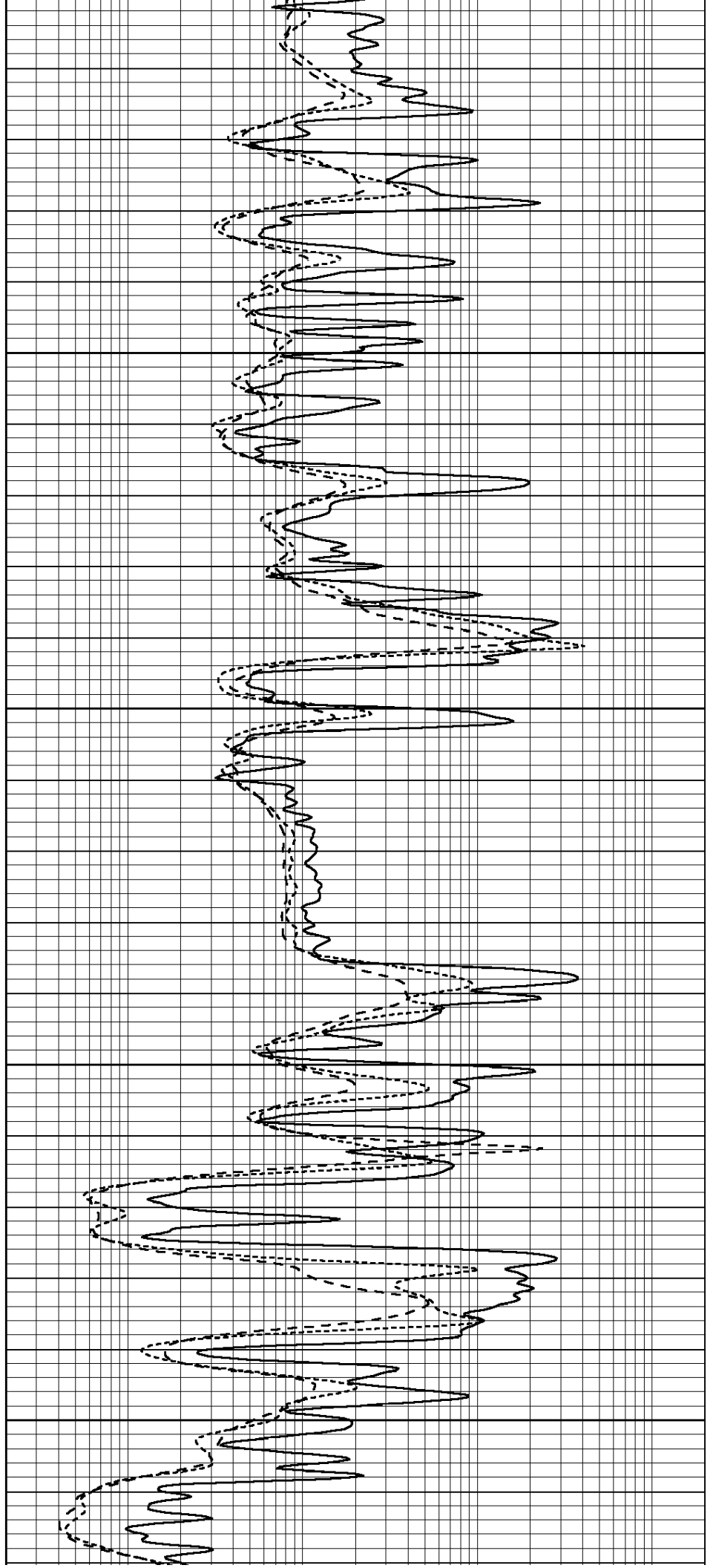


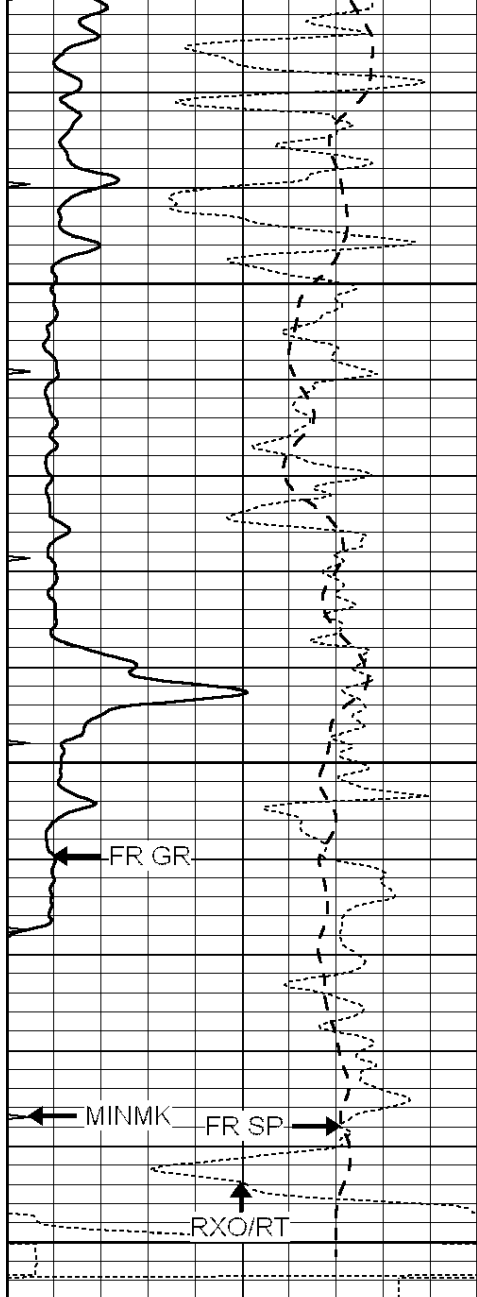
4900

4950

5000

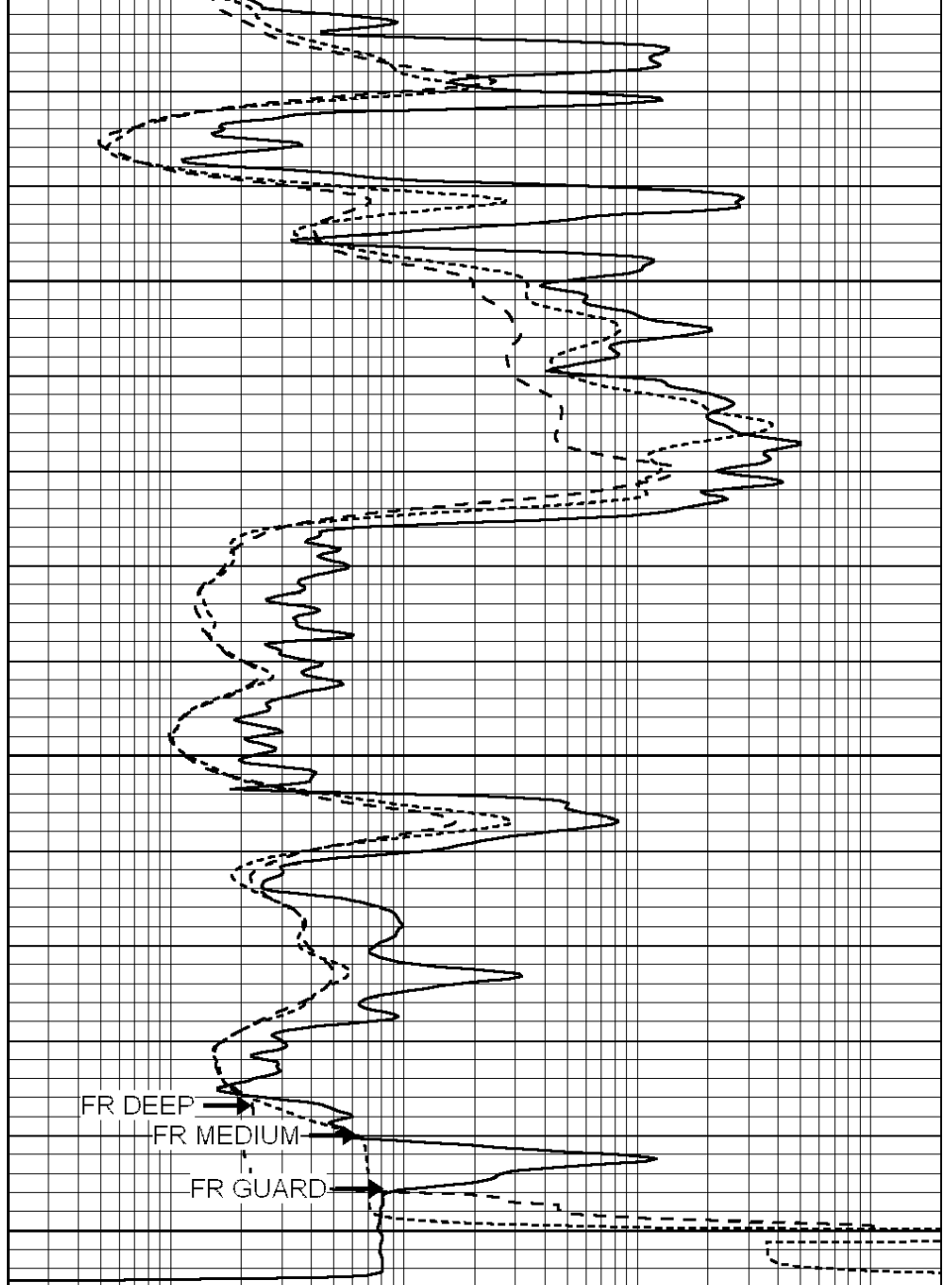
5050





LTD 5198  
5200

0	GAMMA RAY (GAPI)	150
-100	SP (mV)	100
-250	Rxo/Rt	50
0	MINMK	20



0.2	SHALLOW GUARD (Ohm-m)	2000
0.2	DEEP INDUCTION (Ohm-m)	2000
0.2	MEDIUM INDUCTION (Ohm-m)	2000

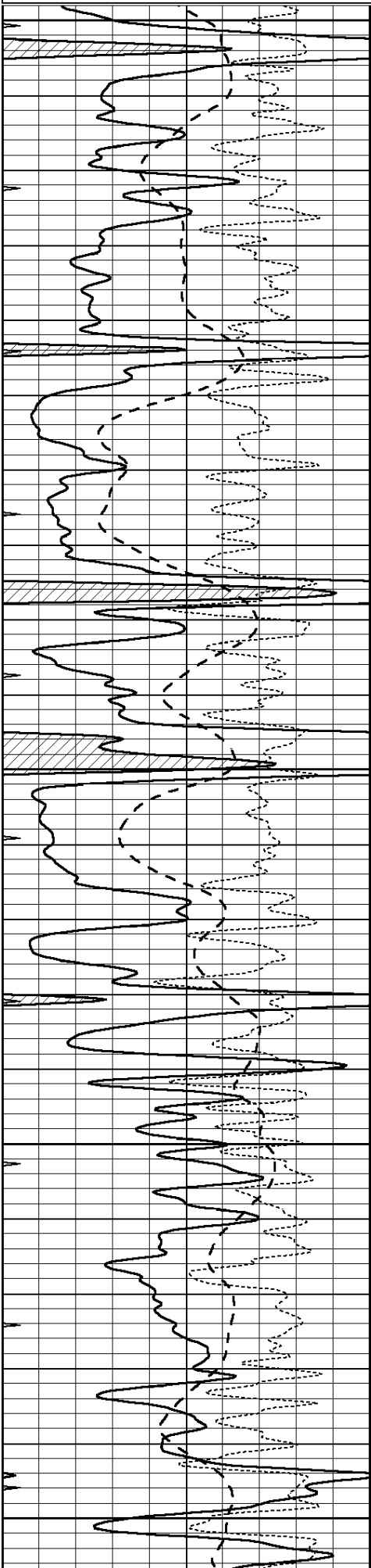


# REPEAT SECTION

Database File: 010041pe.db  
 Dataset Pathname: pass2.2  
 Presentation Format: \_dil  
 Dataset Creation: Mon Jan 07 22:10:10 2013 by Calc SOC 120430  
 Charted by: Depth in Feet scaled 1:240

0	GAMMA RAY (GAPI)	150
-100	SP (mV)	100
-250	Rxo/Rt	50

0.2	SHALLOW GUARD (Ohm-m)	2000
0.2	DEEP INDUCTION (Ohm-m)	2000
0.2	MEDIUM INDUCTION (Ohm-m)	2000



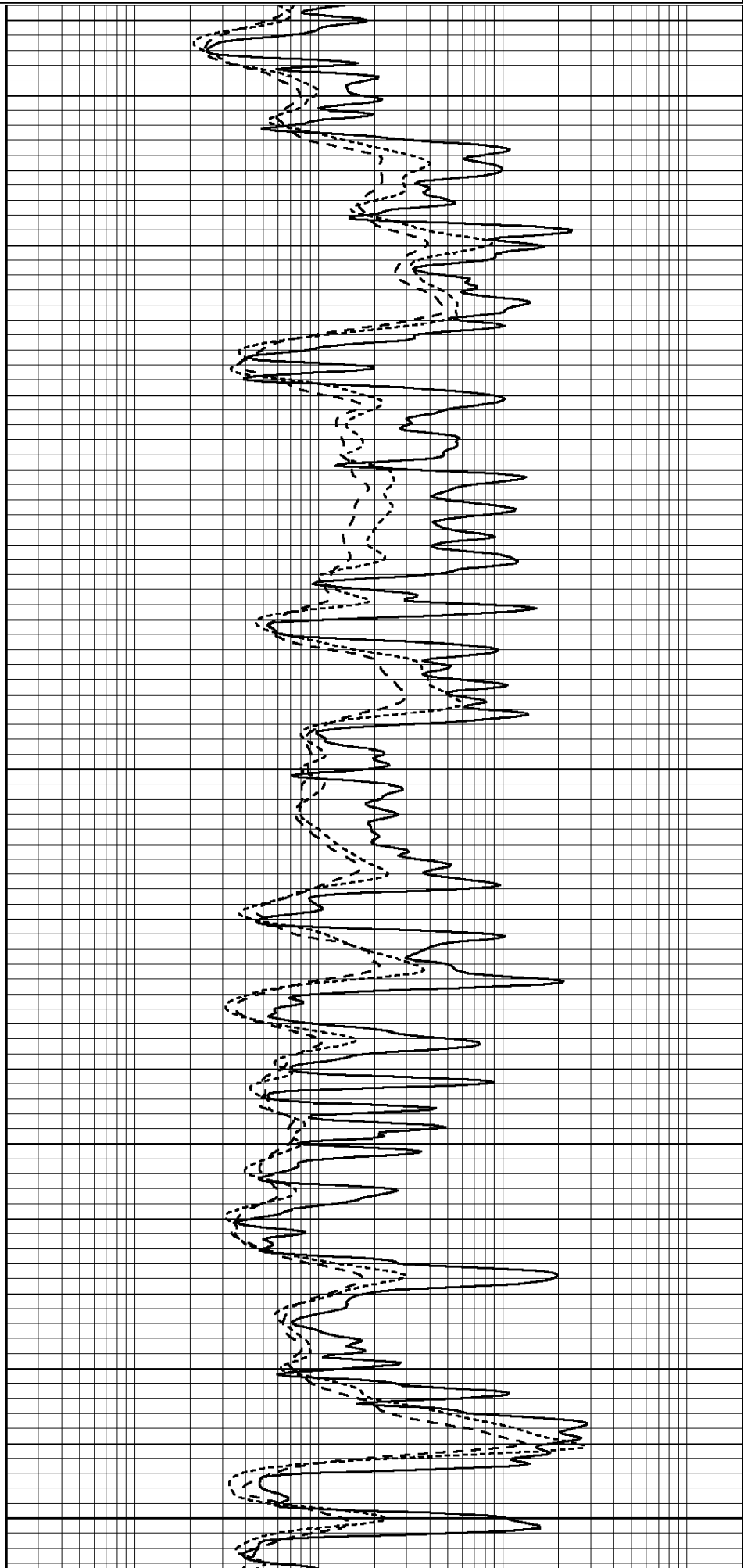
4750

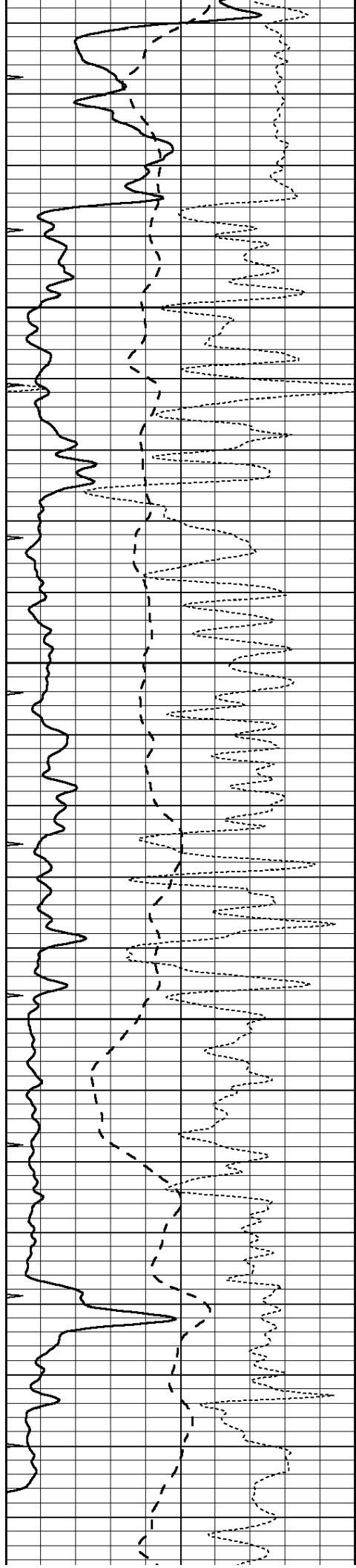
4800

4850

4900

4950



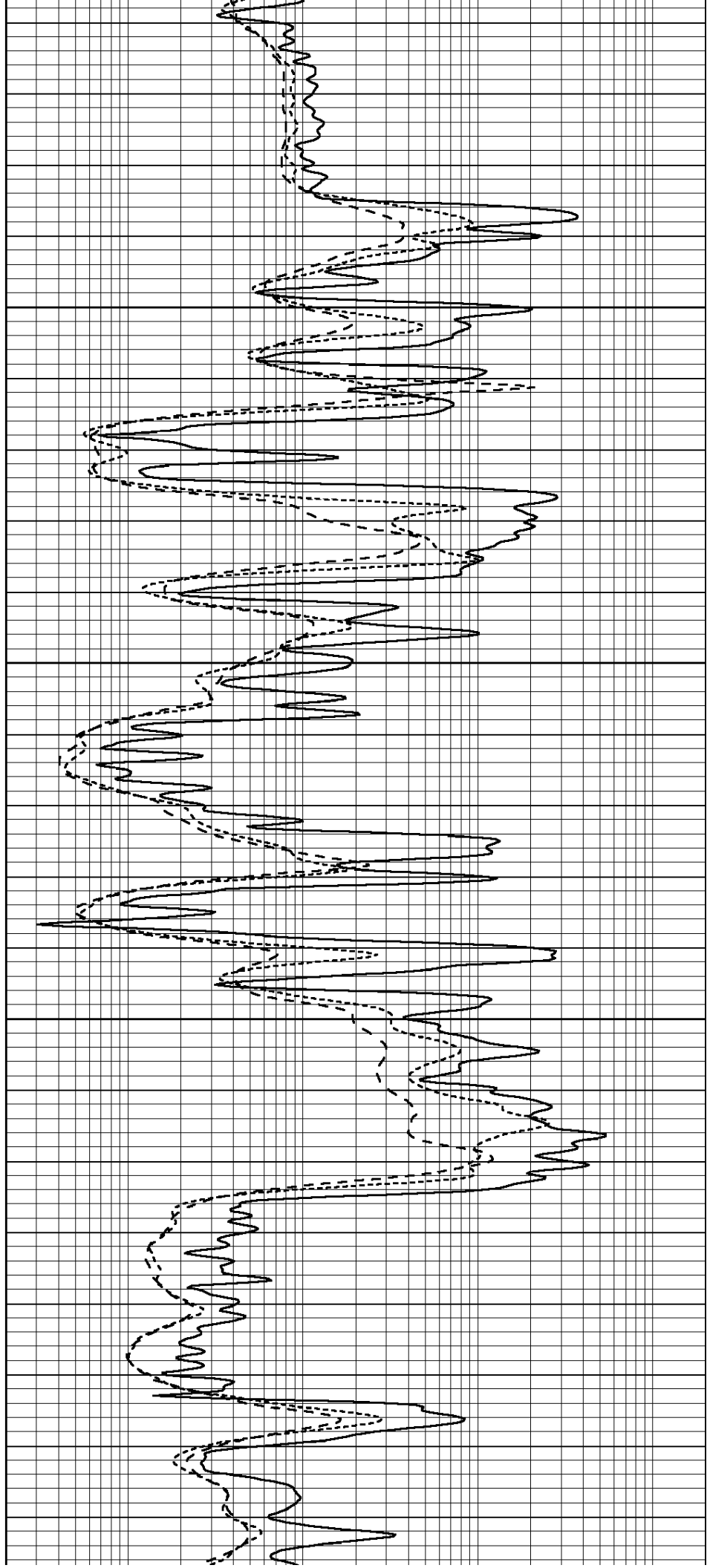


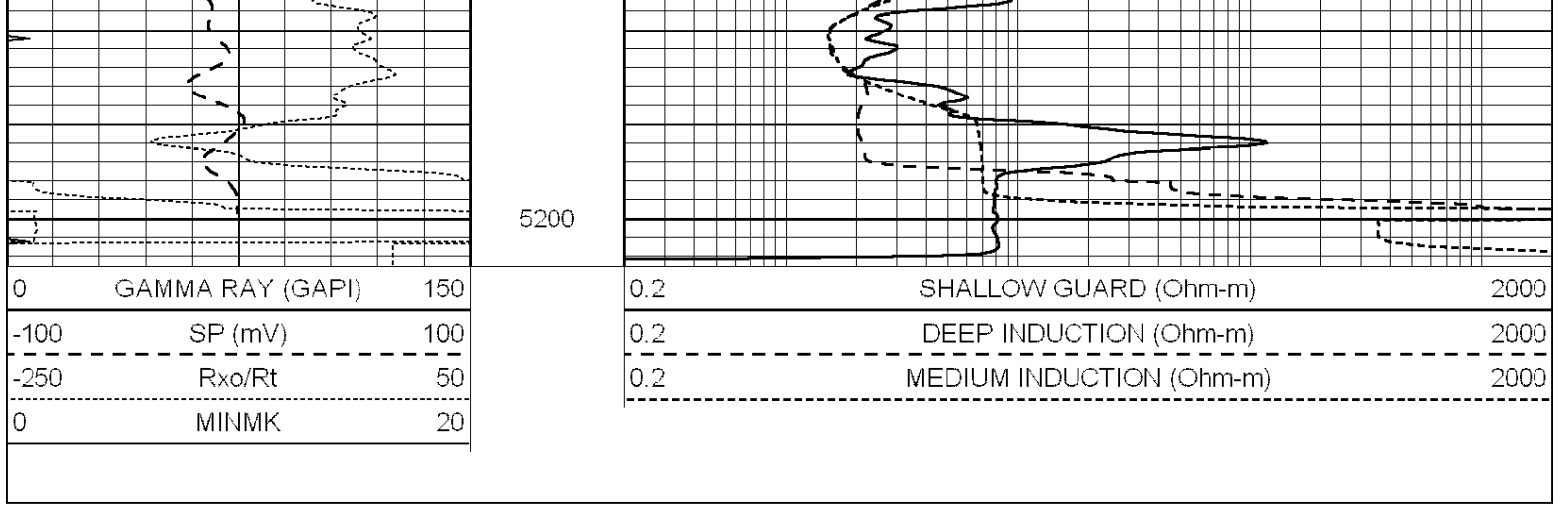
5000

5050

5100

5150





Calibration Report

Database File: 010041pe.db  
 Dataset Pathname: pass3.5  
 Dataset Creation: Mon Jan 07 23:45:16 2013 by Calc SOC 120430

Dual Induction Calibration Report

Serial-Model: DIL3-GEAR  
 Surface Cal Performed: Mon Jan 07 21:43:56 2013  
 Downhole Cal Performed: Fri Mar 21 02:34:00 2003  
 After Survey Verification Performed: Tue Apr 13 17:49:23 2010

Surface Calibration

Loop:	Readings			V	References			Results	
	Air	Loop			Air	Loop		m	b
Deep	0.011	0.656		0.000	400.000	mmho/m	640.000	14.000	
Medium	0.013	0.740		0.000	462.500	mmho/m	720.000	-11.000	
Internal:	Zero	Cal		Zero	Cal		m	b	
Deep	0.002	0.645	V	0.000	400.000	mmho/m	622.059	-1.071	
Medium	0.007	0.740	V	0.000	462.500	mmho/m	631.393	-4.555	

Downhole Calibration

Internal:	Readings			mmho/m	V	References		Results	
	Zero	Cal				Zero	Cal	m	b
Deep	0.000	1.000	mmho/m	0.000	1.000	mmho/m	1.000	0.000	
Medium	0.000	1.000	mmho/m	0.000	1.000	mmho/m	1.000	0.000	
Shallow	2.503	0.050	V	500.000	2.000	Ohm-m	230.000	-3.500	

After Survey Verification

Internal:	Readings			mmho/m	V	Targets		Results	
	Zero	Cal				Zero	Cal	m'	b'
Deep	0.000	1.000	mmho/m	0.000	1.000	mmho/m	1.000	0.000	
Medium	0.000	1.000	mmho/m	0.000	1.000	mmho/m	1.000	0.000	
Shallow	0.000	0.000	Ohm-m	500.000	2.000	Ohm-m	1.000	0.000	

Litho Density Calibration Report  
 Serial: 006 Model: PRB

	Background	Magnesium	Aluminum	Sandstone	
Window 1	1686.6	11612.8	3932.0	12718.8	cps
Window 2	1531.4	9204.7	3267.8	9851.9	cps
Window 3	1198.3	4733.6	1952.5	4920.6	cps
Window 4	317.3	321.2	325.9	303.6	cps
Long Space	0.0	7673.3	1736.4	8320.4	cps
Short Space	1.7	2548.5	1657.2	2628.8	cps
Rho		1.7100	2.5900	1.3800	g/cc
Pe		0.0000	2.5700	1.5500	
Rib Angle	: 43.8	Rib Slope	: 0.961	Density/Spine Ratio	: 0.569
Spine Angle	: 73.8	Spine Slope	: 3.453	Spine Intercept	: -18.1

Before Survey Verification		Performed Wed Dec 31 18:00:00 1969			
Window 1	0.0	0.0	0.0	0.0	cps
Window 2	0.0	0.0	0.0	0.0	cps
Window 3	0.0	0.0	0.0	0.0	cps
Window 4	0.0	0.0	0.0	0.0	cps
Long Space	0.0	0.0	0.0	0.0	cps
Short Space	0.0	0.0	0.0	0.0	cps
Measured Rho		0.0000	0.0000	0.0000	g/cc
Measured Correction		0.0000	0.0000	0.0000	g/cc
Measured Pe			0.0000	0.0000	

After Survey Verification		Performed Wed Dec 31 18:00:00 1969			
Window 1	0.0	0.0	0.0	0.0	cps
Window 2	0.0	0.0	0.0	0.0	cps
Window 3	0.0	0.0	0.0	0.0	cps
Window 4	0.0	0.0	0.0	0.0	cps
Long Space	0.0	0.0	0.0	0.0	cps
Short Space	0.0	0.0	0.0	0.0	cps
Measured Rho		0.0000	0.0000	0.0000	g/cc
Measured Correction		0.0000	0.0000	0.0000	g/cc
Measured Pe			0.0000	0.0000	

Compensated Neutron Calibration Report

Serial Number: 070808  
Tool Model: Probe

PRE-SURVEY VERIFICATION				
Detector	Readings	Measured	Target	
Short Space	cps			
Long Space	cps	pu	pu	

POST-SURVEY VERIFICATION				
Detector	Readings	Measured	Target	
Short Space	cps			
Long Space	cps	pu	pu	

Gamma Ray Calibration Report

Serial Number: 070559  
Tool Model: OPEN\_GR

Performed: Wed Nov 28 18:32:17 2012

Calibrator Value:	1.0	GAPI
Background Reading:	0.0	cps
Calibrator Reading:	1.0	cps
Sensitivity:	0.3000	GAPI/cps