



**COMPLETION
& PRODUCTION
SERVICES CO.**

**COMPENSATED
DENSITY / NEUTRON
PE LOG**

Company VINCENT OIL CORPORATION
Well PETERS #1-24
Field WILDCAT
County FORD
State KANSAS

Company VINCENT OIL CORPORATION
Well PETERS #1-24
Field WILDCAT
County FORD State KANSAS

Location: API # : 15-057-20868-0000
1555' FNL & 2280' FWL
SEC 24 TWP 27S RGE 24W
Permanent Datum GROUND LEVEL Elevation 2459
Log Measured From KELLY BUSHING 10' A.G.L.
Drilling Measured From KELLY BUSHING
Other Services
DIL/MEL
SONIC
Elevation
K.B. 2469
D.F. 2467
G.L. 2459

Date	1/7/13
Run Number	ONE
Depth Driller	5200
Depth Logger	5198
Bottom Logged Interval	5174
Top Log Interval	4000
Casing Driller	8 5/8" @ 558'
Casing Logger	558
Bit Size	7 7/8"
Type Fluid in Hole	CHEMICAL MUD
Density / Viscosity	9.2/54
pH / Fluid Loss	10.5/9.2
Source of Sample	FLOWLINE
Rim @ Meas. Temp	.650 @ 100F
Rmf @ Meas. Temp	.488 @ 100F
Rmc @ Meas. Temp	.780 @ 100F
Source of Rmf / Rmc	MEASUREMENT
Rim @ BHT	.512 @ 127F
Time Circulation Stopped	3 HOURS
Time Logger on Bottom	10:00 P.M.
Maximum Recorded Temperature	127F
Equipment Number	4854
Location	HAYS, KANSAS
Recorded By	JEFF LUEBBERS
Witnessed By	TOM DUDGEON

<<< Fold Here >>>

All interpretations are opinions based on inferences from electrical or other measurements and we cannot and do not guarantee the accuracy or correctness of any interpretation, and we shall not, except in the case of gross or willful negligence on our part, be liable or responsible for any loss, costs, damages, or expenses incurred or sustained by anyone resulting from any interpretation made by any of our officers, agents or employees. These interpretations are also subject to our general terms and conditions set out in our current Price Schedule.

Comments

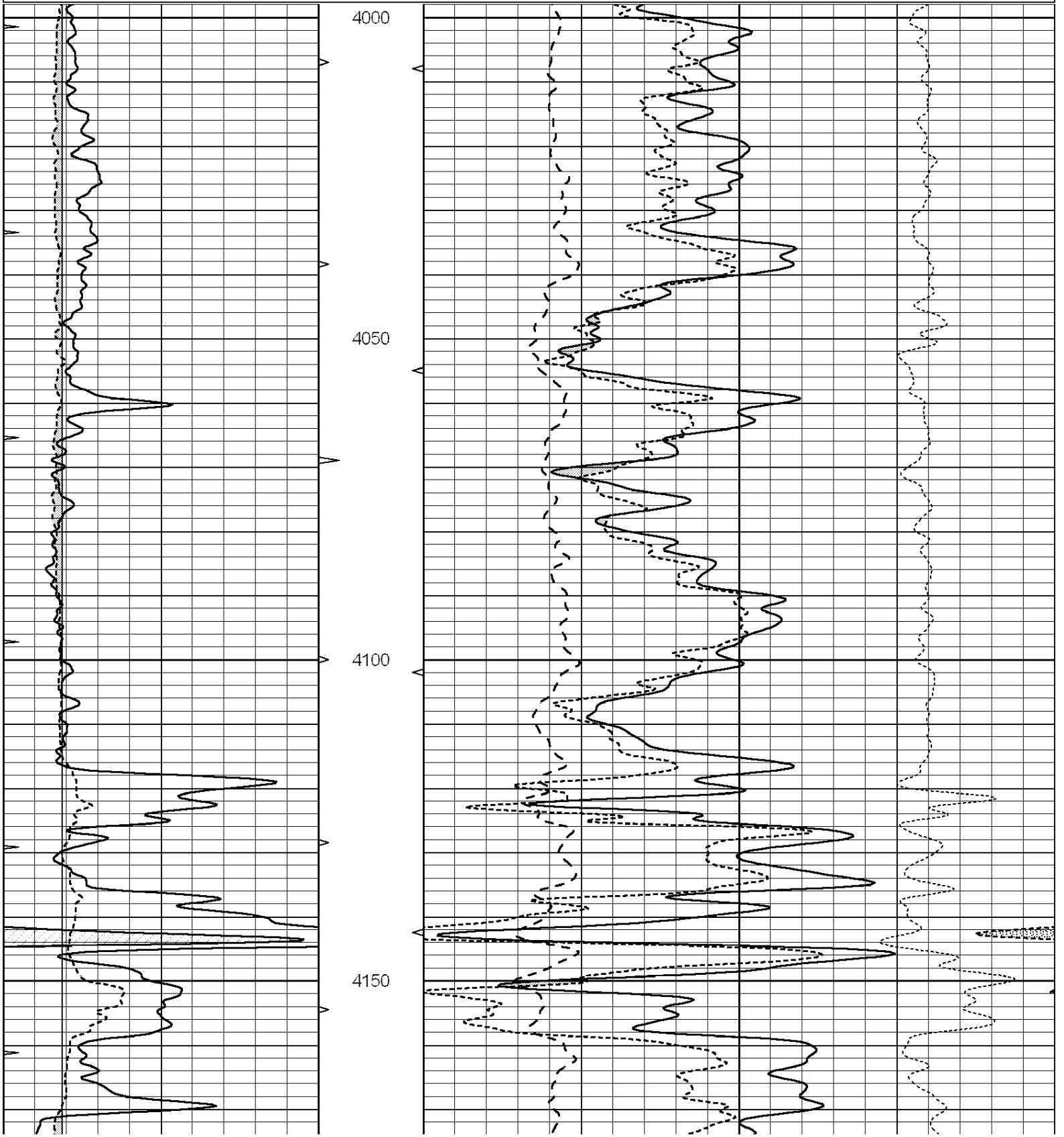
THANK YOU FOR USING "NABORS" HAYS, KANSAS (785) 628-6395
DIRECTIONS
FT. DODGE, KS. 1E. ON HWY 400 TO "RD. 117", 3S., E. INTO JUST PAST SMALL BARN ON THE HILL

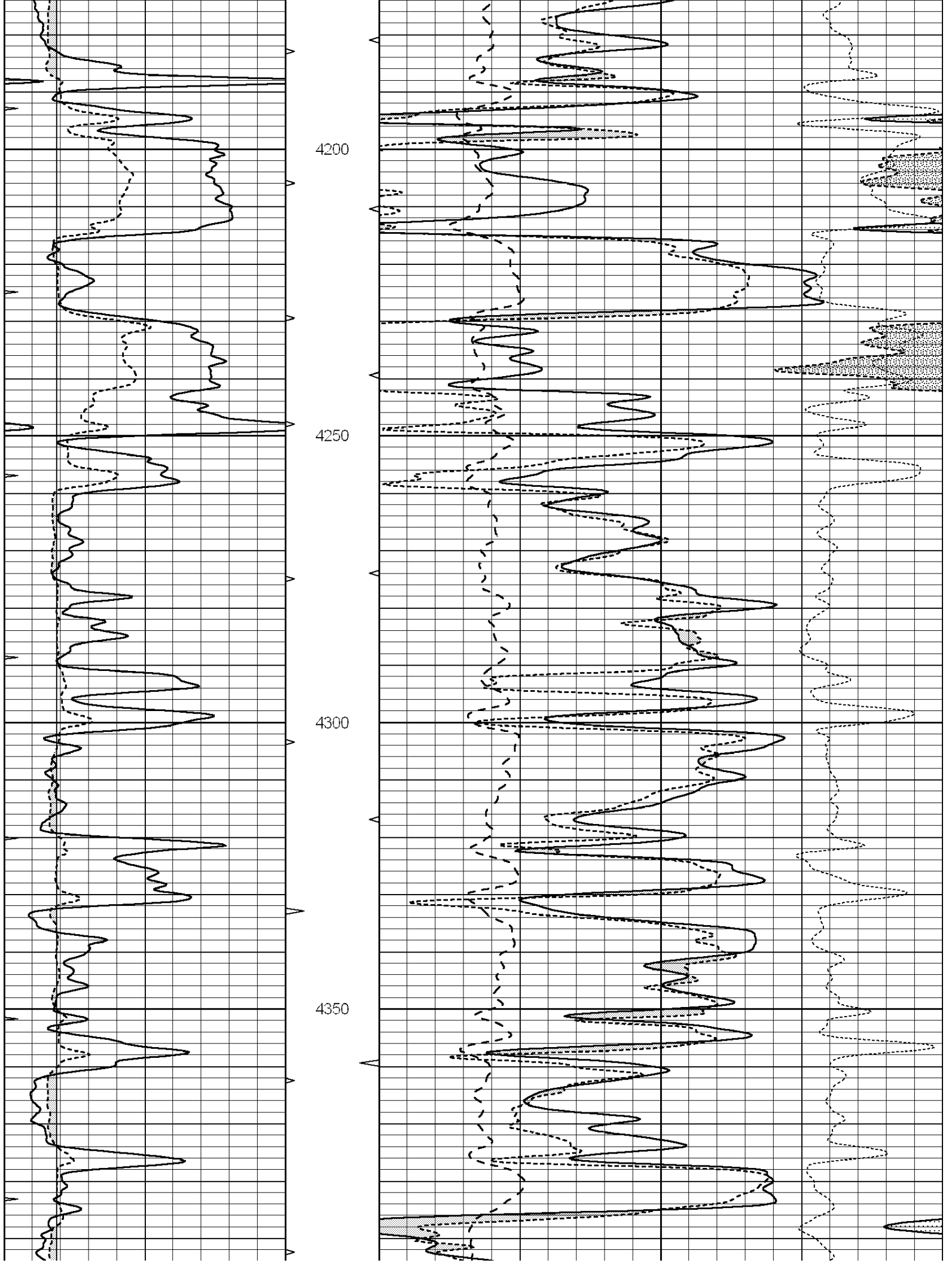


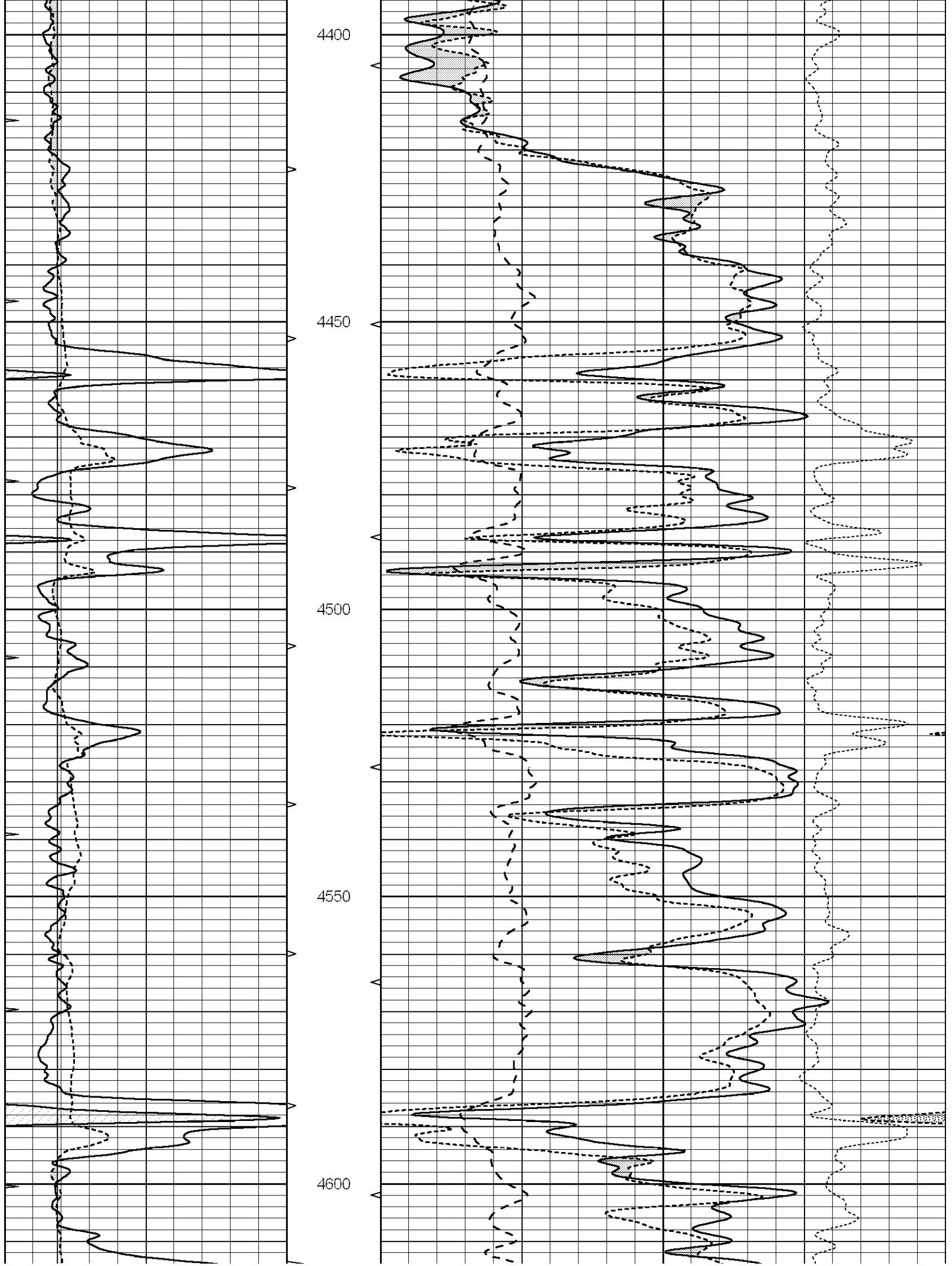
MAIN SECTION

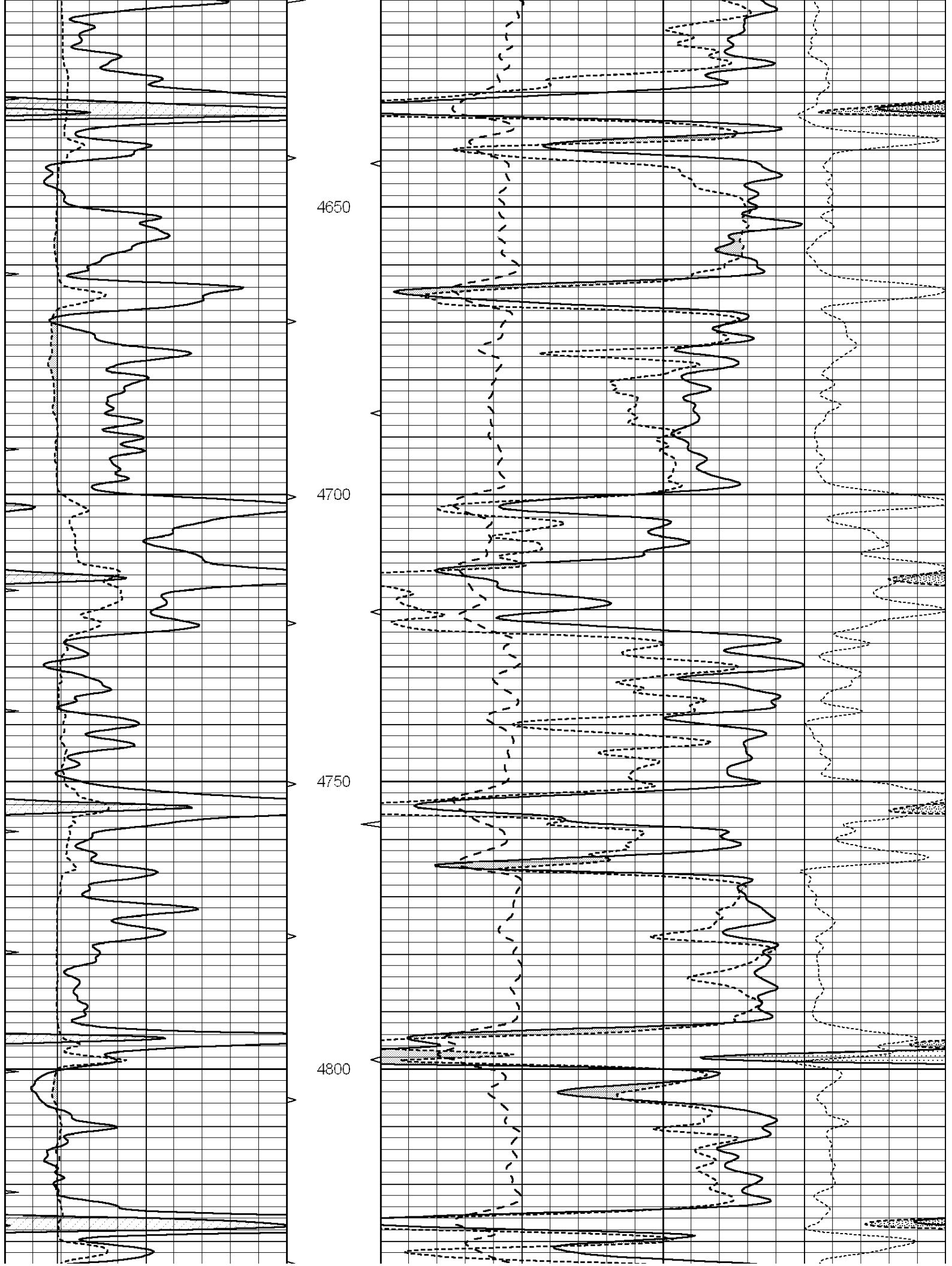
Database File: 010041pe.db
 Dataset Pathname: pass3.5
 Presentation Format: ldt_neu
 Dataset Creation: Mon Jan 07 23:45:16 2013 by Calc SOC 120430
 Charted by: Depth in Feet scaled 1:240

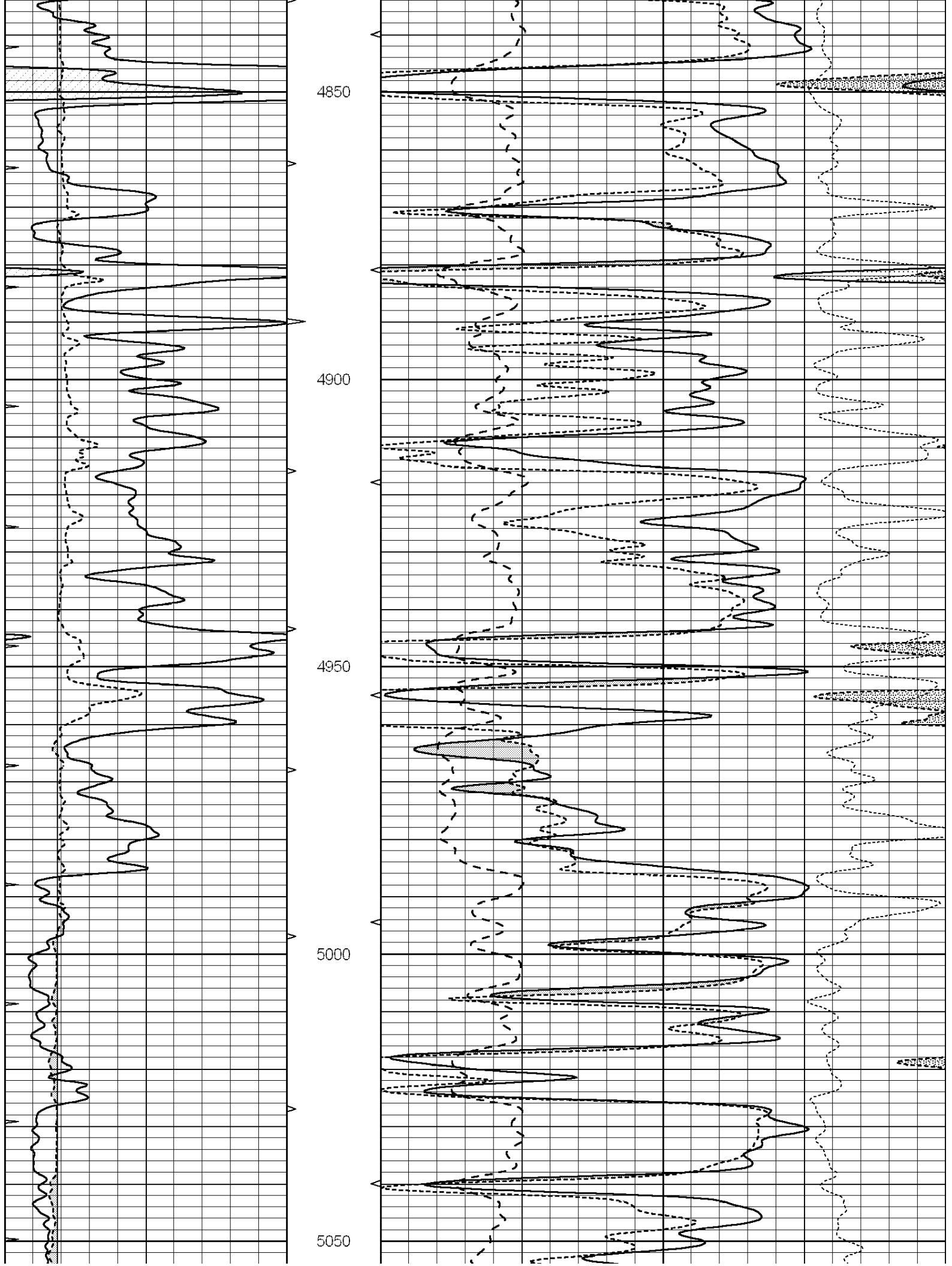
0	GAMMA RAY (GAPI)	150	ABHV	30	COMPENSATED DENSITY (pu)		-10
6	CALIPER (in)	16	10 (ft3)	0	COMPENSATED NEUTRON (pu)		-10
0	MINMK	20	TBHV	0	PE	10	-0.25 CORRECTION (g/cc) 0.25
			0 (ft3)	10			

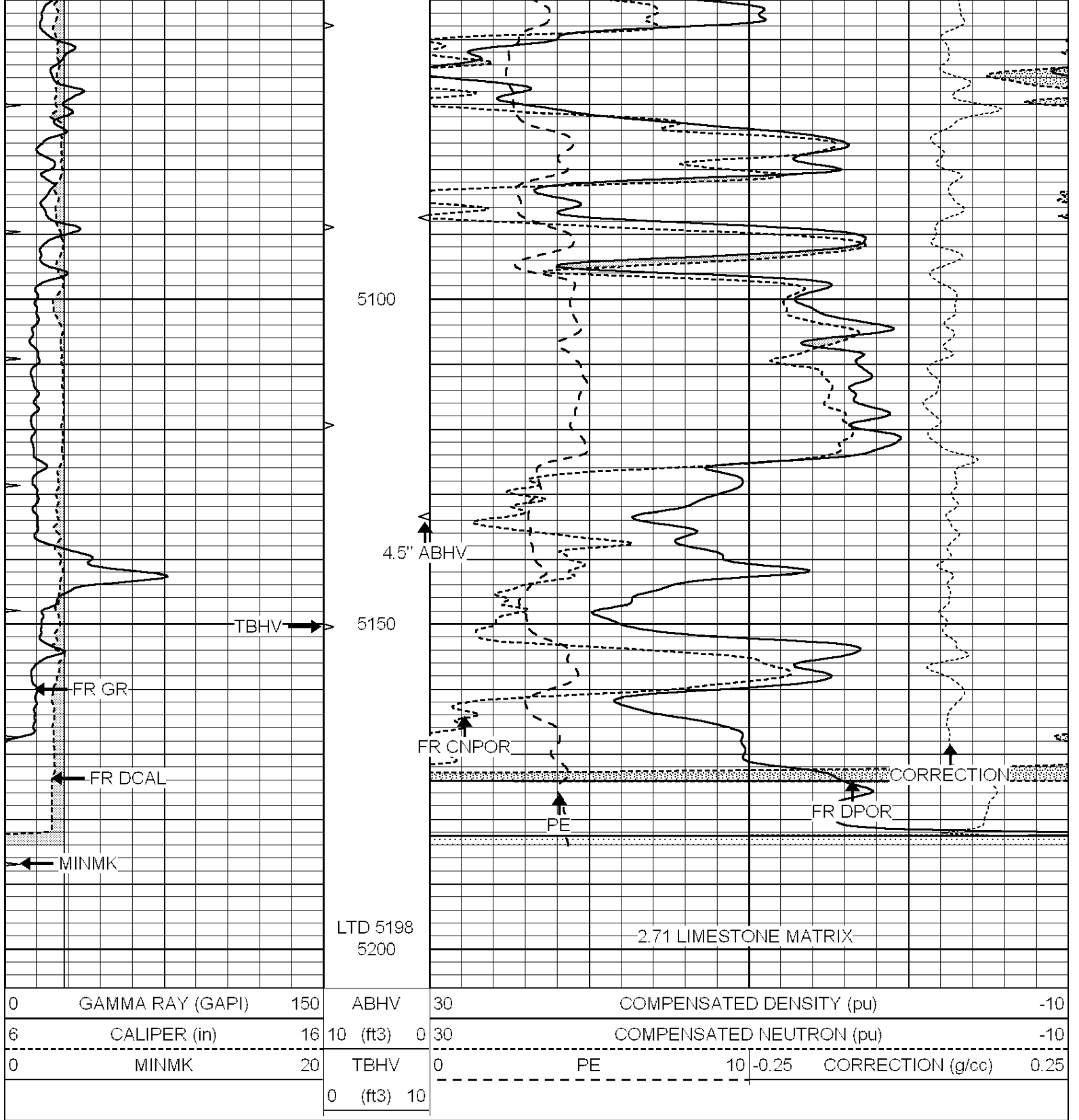










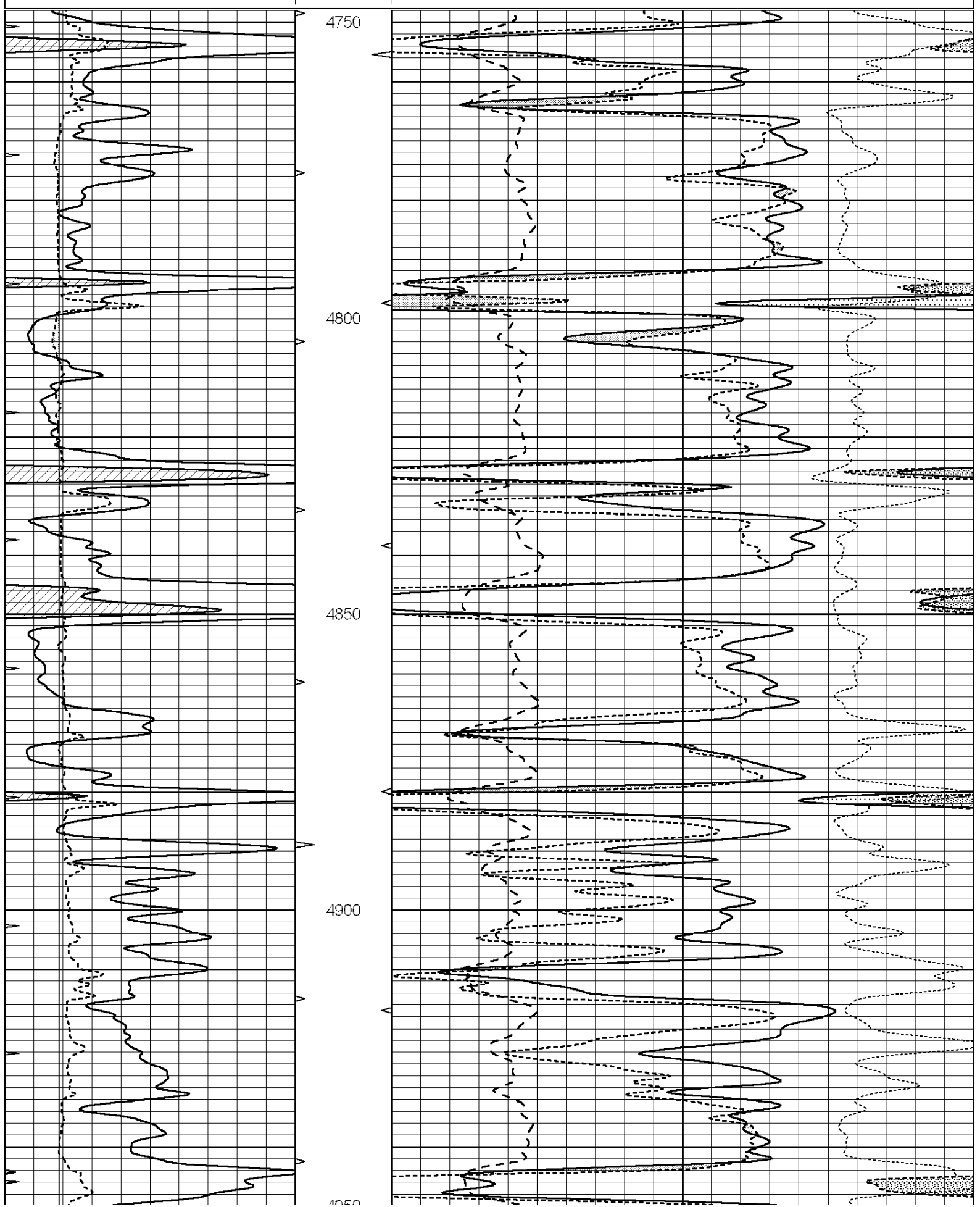


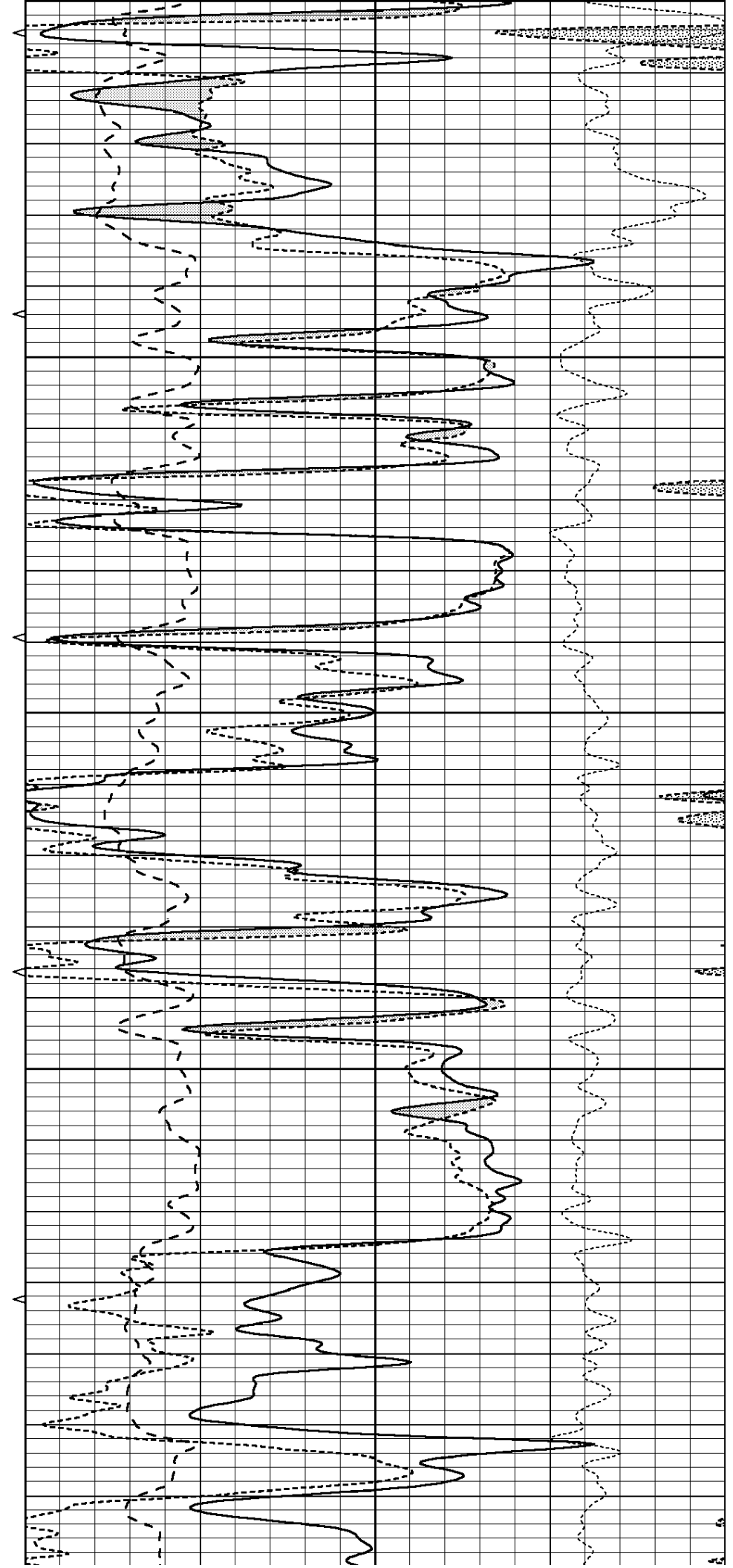
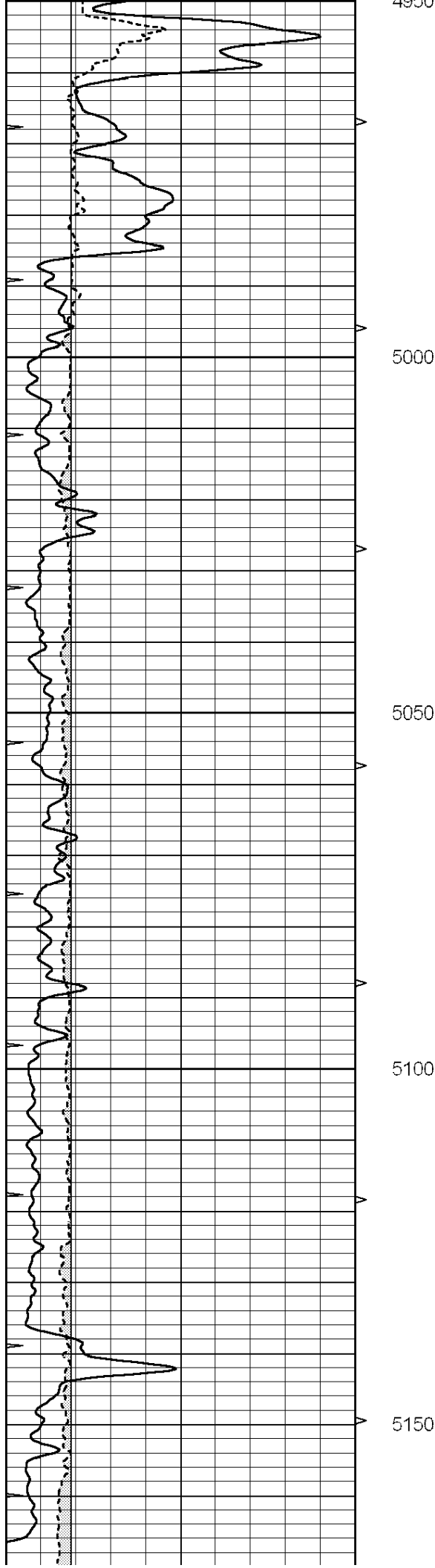
REPEAT SECTION

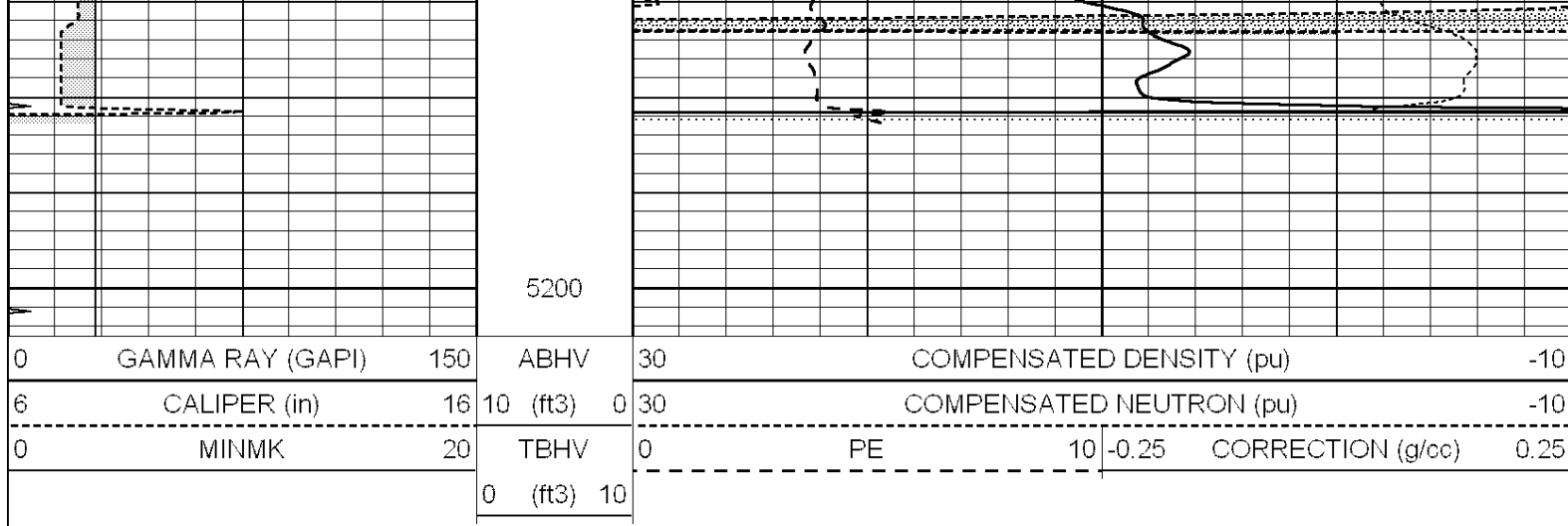
Database File: 010041pe.db
 Dataset Pathname: pass2.2
 Presentation Format: ldt_neu
 Dataset Creation: Mon Jan 07 22:10:10 2013 by Calc SOC 120430
 Charted by: Depth in Feet scaled 1:240

0	GAMMA RAY (GAPI)	150	ABHV	30	COMPENSATED DENSITY (pu)	-10
---	------------------	-----	------	----	--------------------------	-----

6	CALIPER (in)	16	10 (ft3)	0	30	COMPENSATED NEUTRON (pu)	-10	
0	MINMK	20	TBHV	0	PE	10 -0.25	CORRECTION (g/cc)	0.25
			0 (ft3)	10				







Calibration Report

Database File: 010041pe.db
 Dataset Pathname: pass3.5
 Dataset Creation: Mon Jan 07 23:45:16 2013 by Calc SOC 120430

Dual Induction Calibration Report

Serial-Model: DIL3-GEAR
 Surface Cal Performed: Mon Jan 07 21:43:56 2013
 Downhole Cal Performed: Fri Mar 21 02:34:00 2003
 After Survey Verification Performed: Tue Apr 13 17:49:23 2010

Surface Calibration

Loop:	Readings				References			Results	
	Air	Loop			Air	Loop		m	b
Deep	0.011	0.656	V	0.000	400.000	mmho/m	640.000	14.000	
Medium	0.013	0.740	V	0.000	462.500	mmho/m	720.000	-11.000	
Internal:	Zero	Cal		Zero	Cal		m	b	
Deep	0.002	0.645	V	0.000	400.000	mmho/m	622.059	-1.071	
Medium	0.007	0.740	V	0.000	462.500	mmho/m	631.393	-4.555	

Downhole Calibration

Internal:	Readings				References			Results	
	Zero	Cal			Zero	Cal		m	b
Deep	0.000	1.000	mmho/m	0.000	1.000	mmho/m	1.000	0.000	
Medium	0.000	1.000	mmho/m	0.000	1.000	mmho/m	1.000	0.000	
Shallow	2.503	0.050	V	500.000	2.000	Ohm-m	230.000	-3.500	

After Survey Verification

Internal:	Readings				Targets			Results	
	Zero	Cal			Zero	Cal		m'	b'
Deep	0.000	1.000	mmho/m	0.000	1.000	mmho/m	1.000	0.000	
Medium	0.000	1.000	mmho/m	0.000	1.000	mmho/m	1.000	0.000	
Shallow	0.000	0.000	Ohm-m	500.000	2.000	Ohm-m	1.000	0.000	

Litho Density Calibration Report

Serial: 006 Model: PRB

	Background	Magnesium	Aluminum	Sandstone	
Window 1	1686.6	11612.8	3932.0	12718.8	cps
Window 2	1531.4	9204.7	3267.8	9851.9	cps
Window 3	1198.3	4733.6	1952.5	4920.6	cps
Window 4	317.3	321.2	325.9	303.6	cps
Long Space	0.0	7673.3	1736.4	8320.4	cps
Short Space	1.7	2548.5	1657.2	2628.8	cps
Rho		1.7100	2.5900	1.3800	g/cc
Pe		0.0000	2.5700	1.5500	
Rib Angle	: 43.8	Rib Slope	: 0.961	Density/Spine Ratio	: 0.569
Spine Angle	: 73.8	Spine Slope	: 3.453	Spine Intercept	: -18.1

Before Survey Verification

Performed Wed Dec 31 18:00:00 1969

Window 1	0.0	0.0	0.0	0.0	cps
Window 2	0.0	0.0	0.0	0.0	cps
Window 3	0.0	0.0	0.0	0.0	cps
Window 4	0.0	0.0	0.0	0.0	cps
Long Space	0.0	0.0	0.0	0.0	cps
Short Space	0.0	0.0	0.0	0.0	cps
Measured Rho		0.0000	0.0000	0.0000	g/cc
Measured Correction		0.0000	0.0000	0.0000	g/cc
Measured Pe			0.0000	0.0000	

After Survey Verification

Performed Wed Dec 31 18:00:00 1969

Window 1	0.0	0.0	0.0	0.0	cps
Window 2	0.0	0.0	0.0	0.0	cps
Window 3	0.0	0.0	0.0	0.0	cps
Window 4	0.0	0.0	0.0	0.0	cps
Long Space	0.0	0.0	0.0	0.0	cps
Short Space	0.0	0.0	0.0	0.0	cps
Measured Rho		0.0000	0.0000	0.0000	g/cc
Measured Correction		0.0000	0.0000	0.0000	g/cc
Measured Pe			0.0000	0.0000	

Compensated Neutron Calibration Report

Serial Number: 070808
Tool Model: Probe

PRE-SURVEY VERIFICATION

Detector	Readings	Measured	Target
Short Space	cps		
Long Space	cps	pu	pu

POST-SURVEY VERIFICATION

Detector	Readings	Measured	Target
Short Space	cps		
Long Space	cps	pu	pu

Gamma Ray Calibration Report

Serial Number: 070559
Tool Model: OPEN CP

Tool Model: OPEN_GR
Performed: Wed Nov 28 18:32:17 2012

Calibrator Value: 1.0 GAPI

Background Reading: 0.0 cps

Calibrator Reading: 1.0 cps

Sensitivity: 0.3000 GAPI/cps