



**COMPLETION
& PRODUCTION
SERVICES CO.**

**MICRO
LOG**

Company VINCENT OIL CORPORATION
Well PETERS #1-24
Field WILDCAT
County FORD
State KANSAS

Company VINCENT OIL CORPORATION
Well PETERS #1-24
Field WILDCAT
County FORD State KANSAS

Location: API # : 15-057-20868-0000
1555' FNL & 2280' FWL
SEC 24 TWP 27S RGE 24W
Permanent Datum GROUND LEVEL Elevation 2459
Log Measured From KELLY BUSHING 10' A.G.L.
Drilling Measured From KELLY BUSHING
Other Services
CDL/CNL/PE
DIL/SONIC
Elevation
K.B. 2469
D.F. 2467
G.L. 2459

Date	1/7/13
Run Number	TWO
Depth Driller	5200
Depth Logger	5198
Bottom Logged Interval	5176
Top Log Interval	4000
Casing Driller	8 5/8" @ 558'
Casing Logger	558
Bit Size	7 7/8"
Type Fluid in Hole	CHEMICAL MUD
Density / Viscosity	9.2/54
pH / Fluid Loss	10.5/9.2
Source of Sample	FLOWLINE
Rim @ Meas. Temp	.650 @ 100F
Rmf @ Meas. Temp	.488 @ 100F
Rmc @ Meas. Temp	.780 @ 100F
Source of Rmf / Rmc	MEASUREMENT
Rim @ BHT	.512 @ 127F
Time Circulation Stopped	5.5 HOURS
Time Logger on Bottom	10:00 P.M.
Maximum Recorded Temperature	127F
Equipment Number	4854
Location	HAYS, KANSAS
Recorded By	JEFF LUEBBERS
Witnessed By	TOM DUDGEON

<<< Fold Here >>>

All interpretations are opinions based on inferences from electrical or other measurements and we cannot and do not guarantee the accuracy or correctness of any interpretation, and we shall not, except in the case of gross or willful negligence on our part, be liable or responsible for any loss, costs, damages, or expenses incurred or sustained by anyone resulting from any interpretation made by any of our officers, agents or employees. These interpretations are also subject to our general terms and conditions set out in our current Price Schedule.

Comments

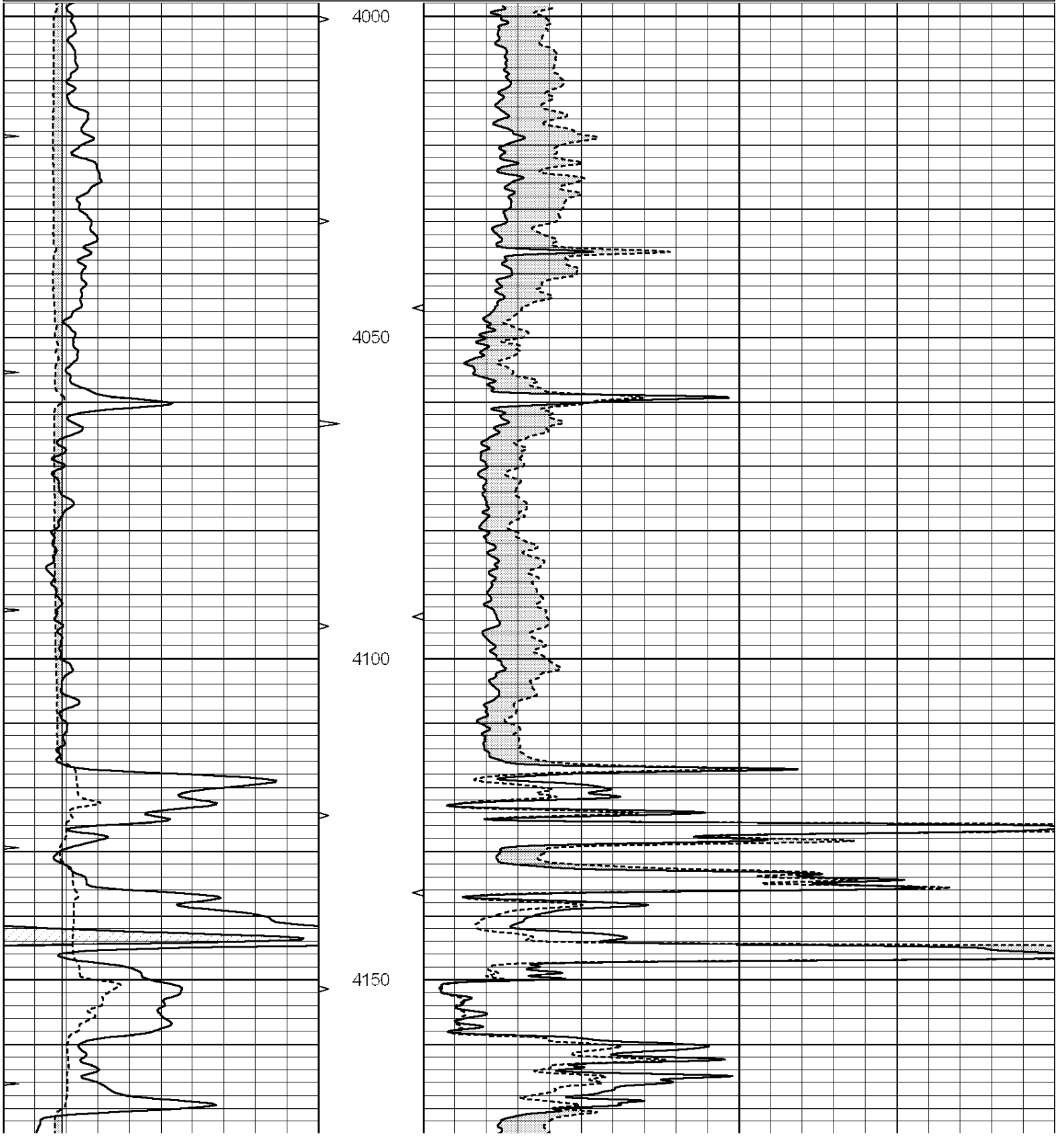
THANK YOU FOR USING "NABORS" HAYS, KANSAS (785) 628-6395
DIRECTIONS
FT. DODGE, KS. 1E. ON HWY 400 TO "RD. 117", 3S., E. INTO JUST PAST SMALL BARN ON THE HILL

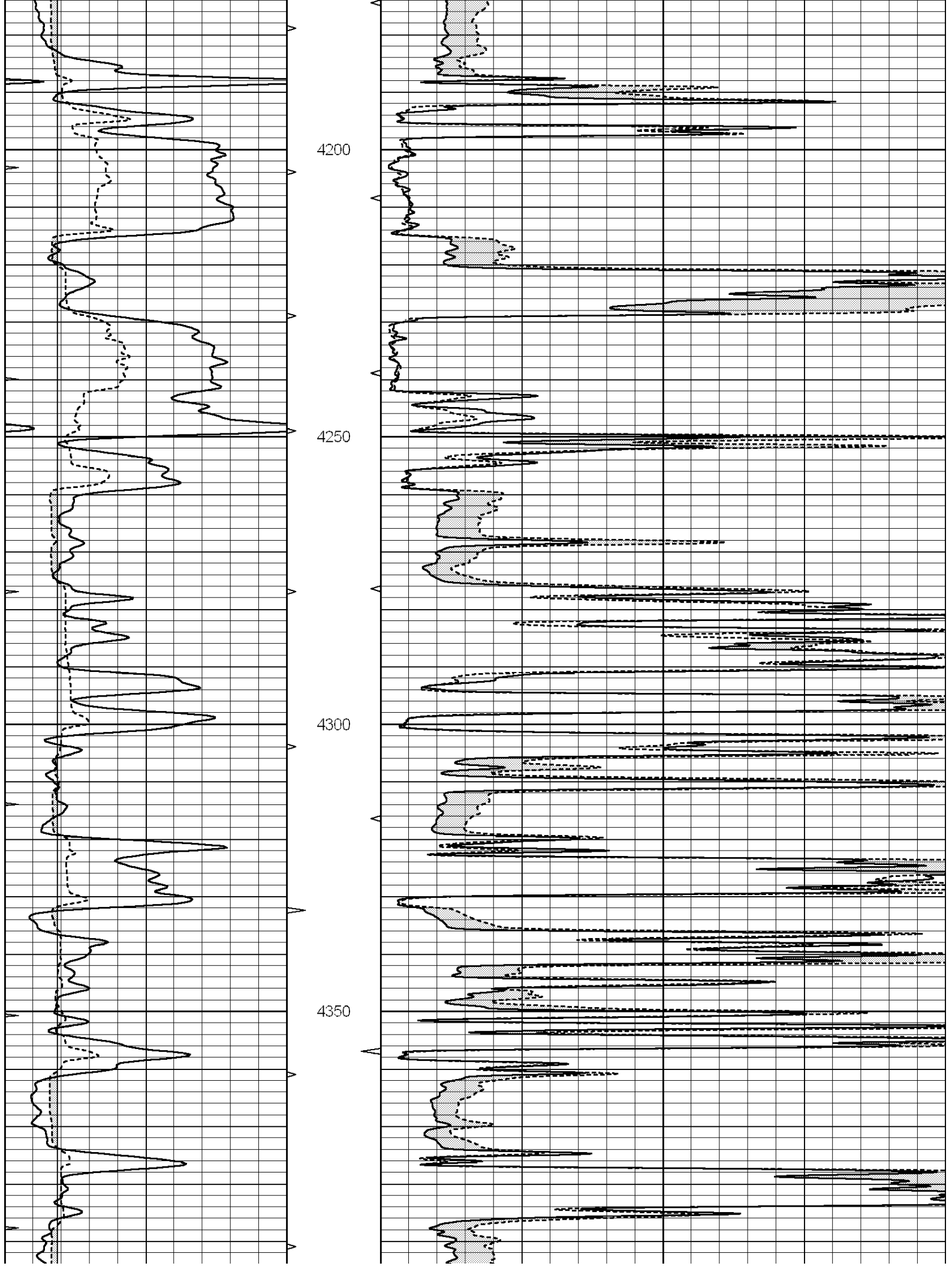


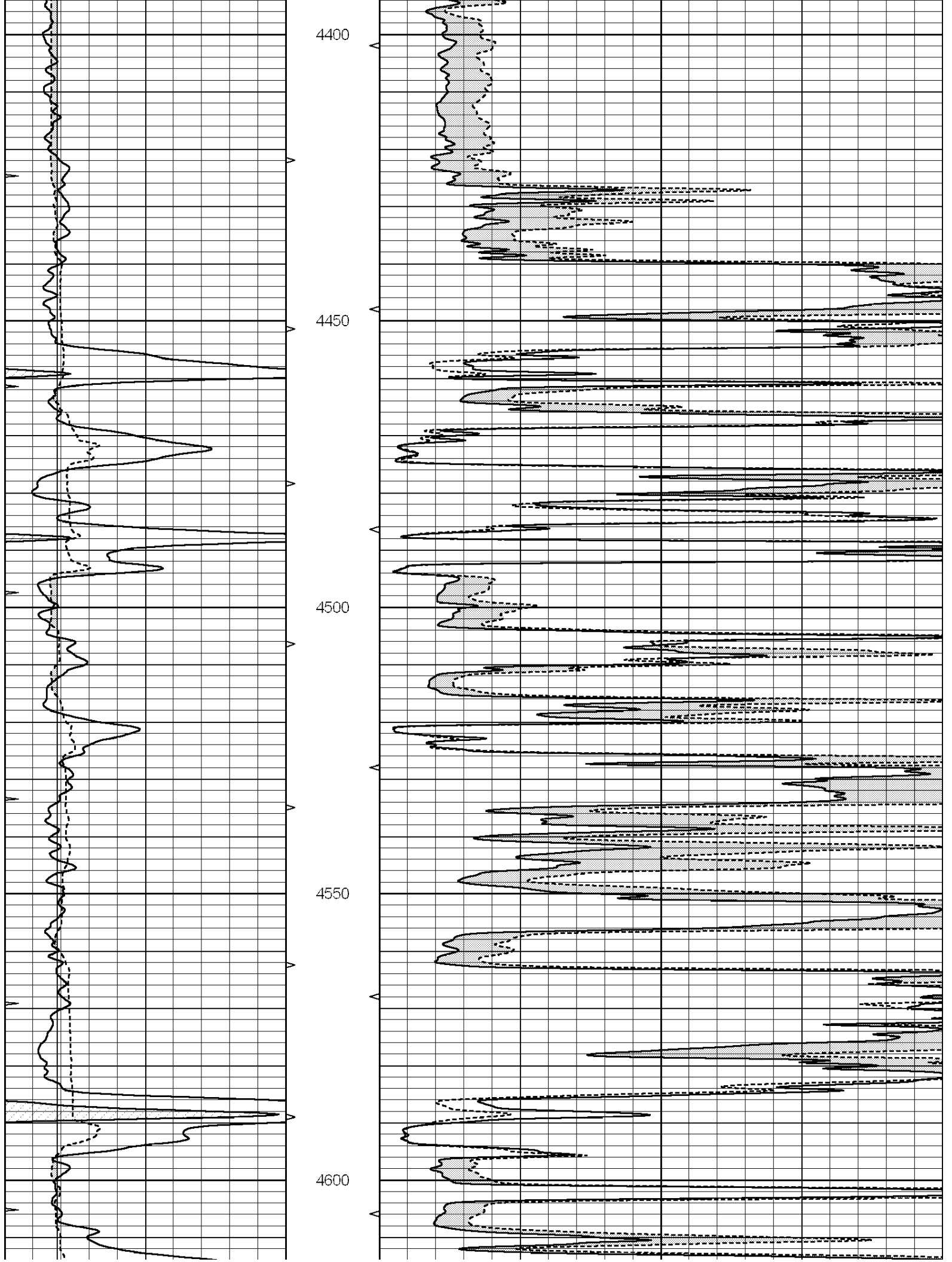
MAIN SECTION

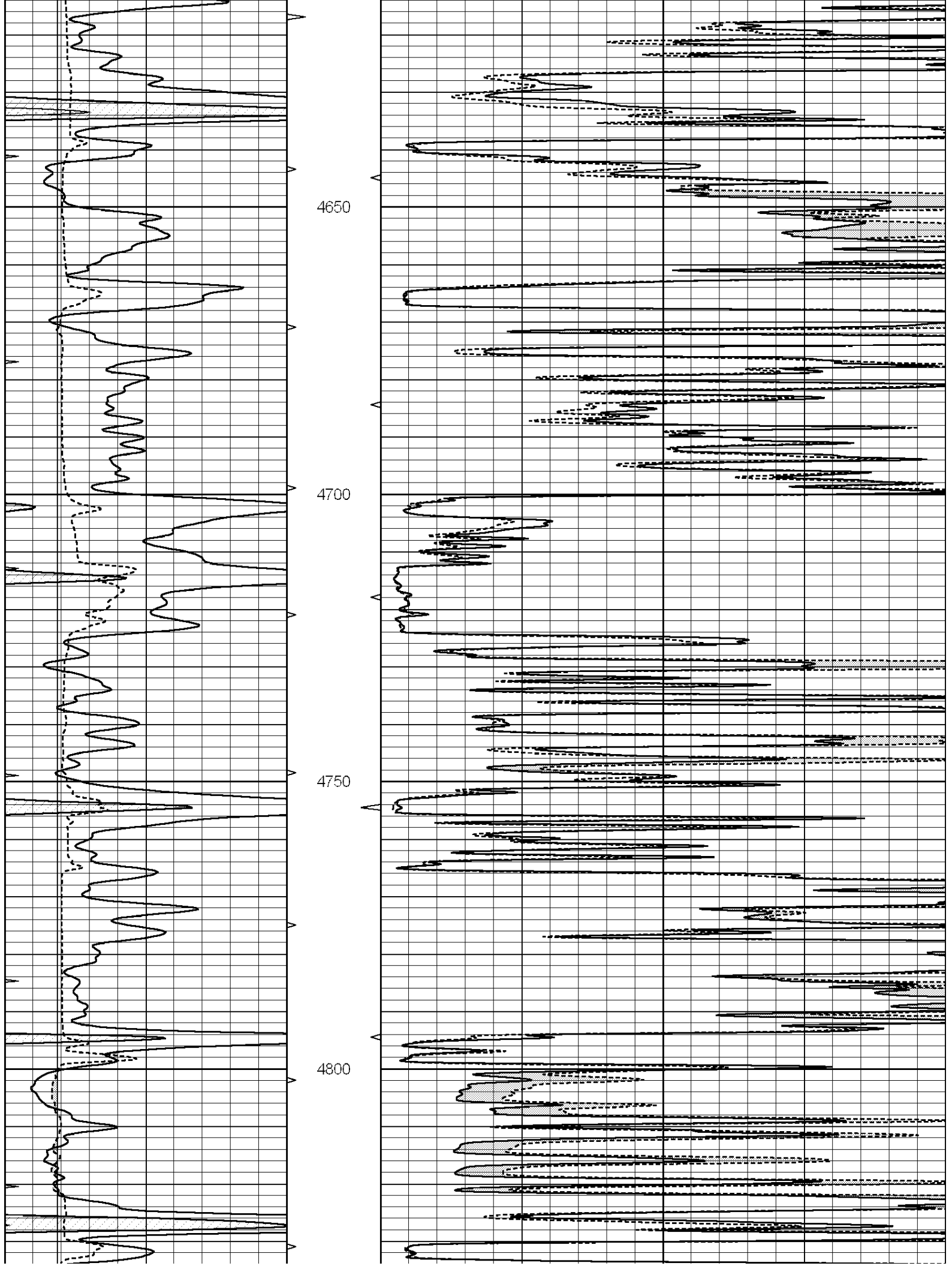
Database File: 010041pe.db
 Dataset Pathname: pass7.6
 Presentation Format: micro
 Dataset Creation: Tue Jan 08 01:41:29 2013
 Charted by: Depth in Feet scaled 1:240

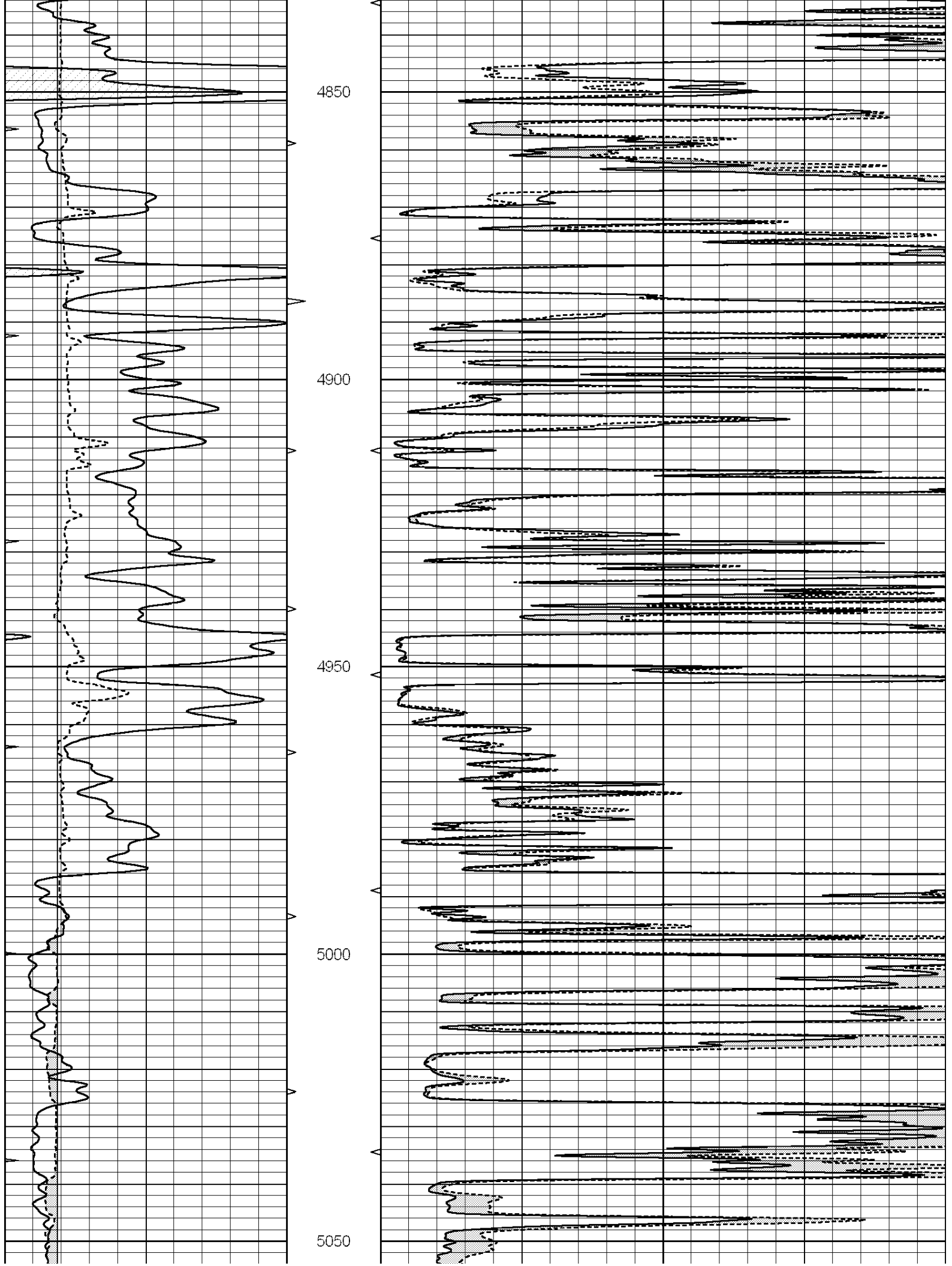
0	GAMMA RAY (GAPI)	150	ABHV	0	MEL1.5 (Ohm-m)	40
6	CALIPER (in)	16	10 (ft3)	0	MEL2.0 (Ohm-m)	40
0	MINMK	20	TBHV			
			0 (ft3)	10		

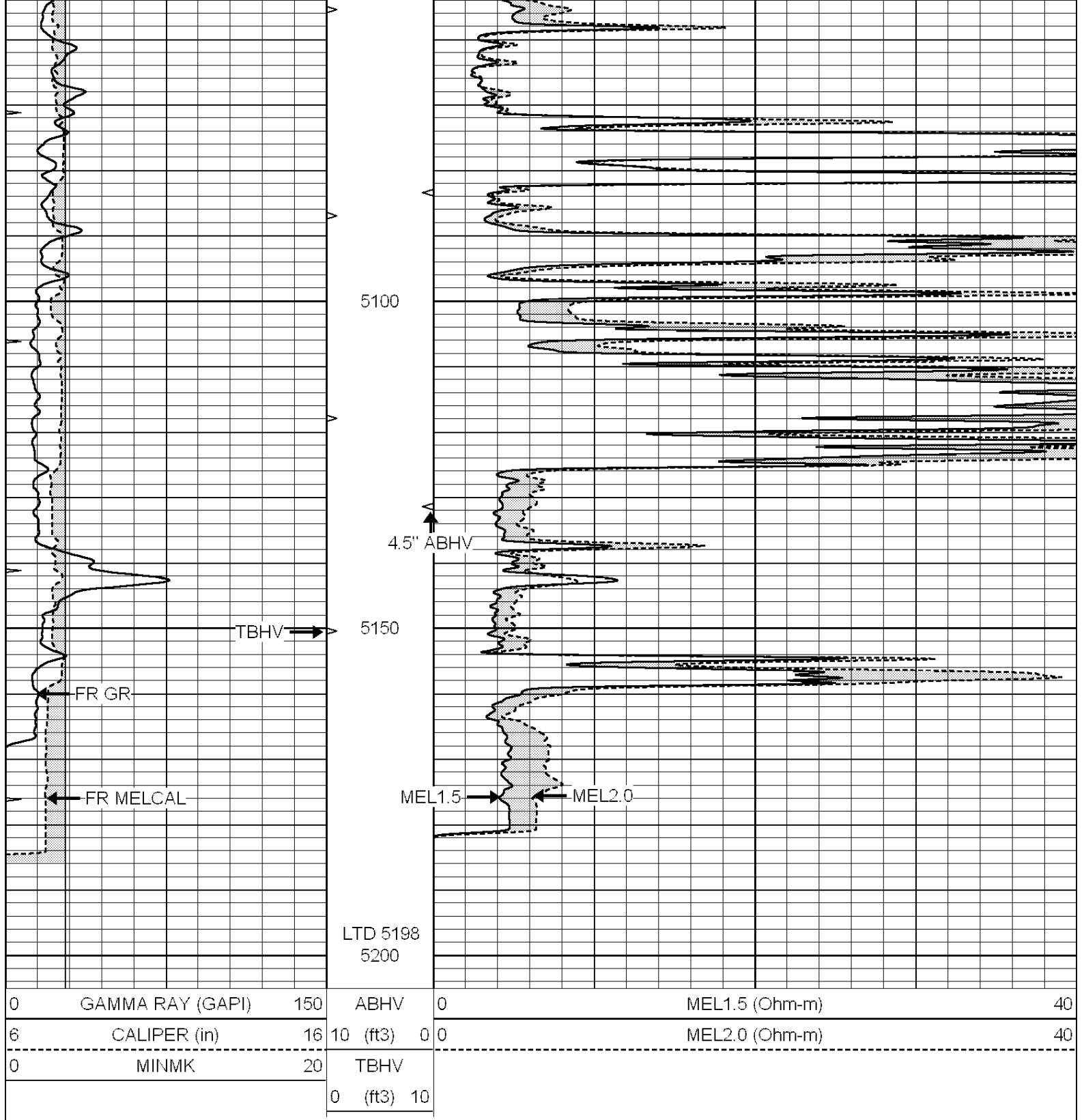










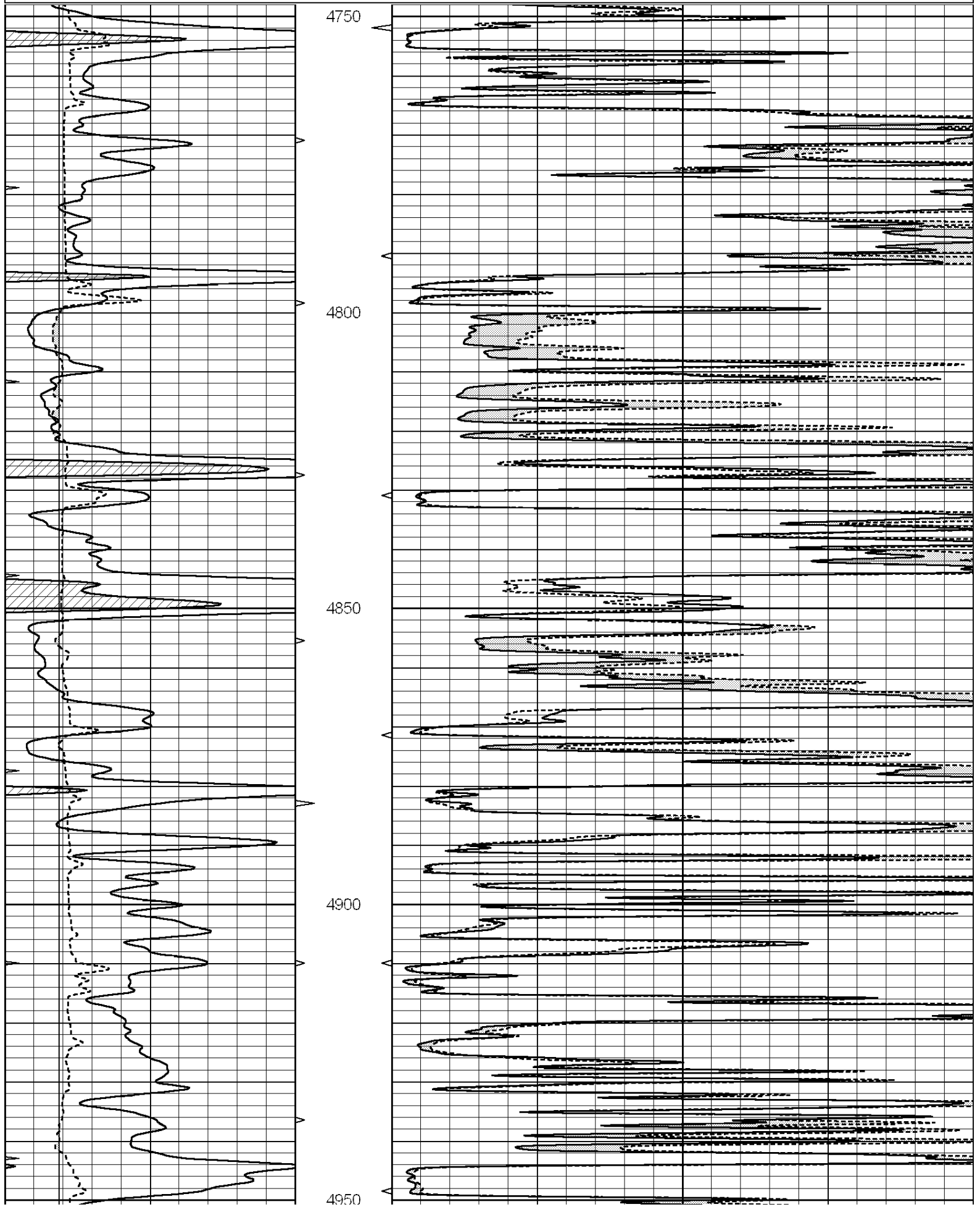


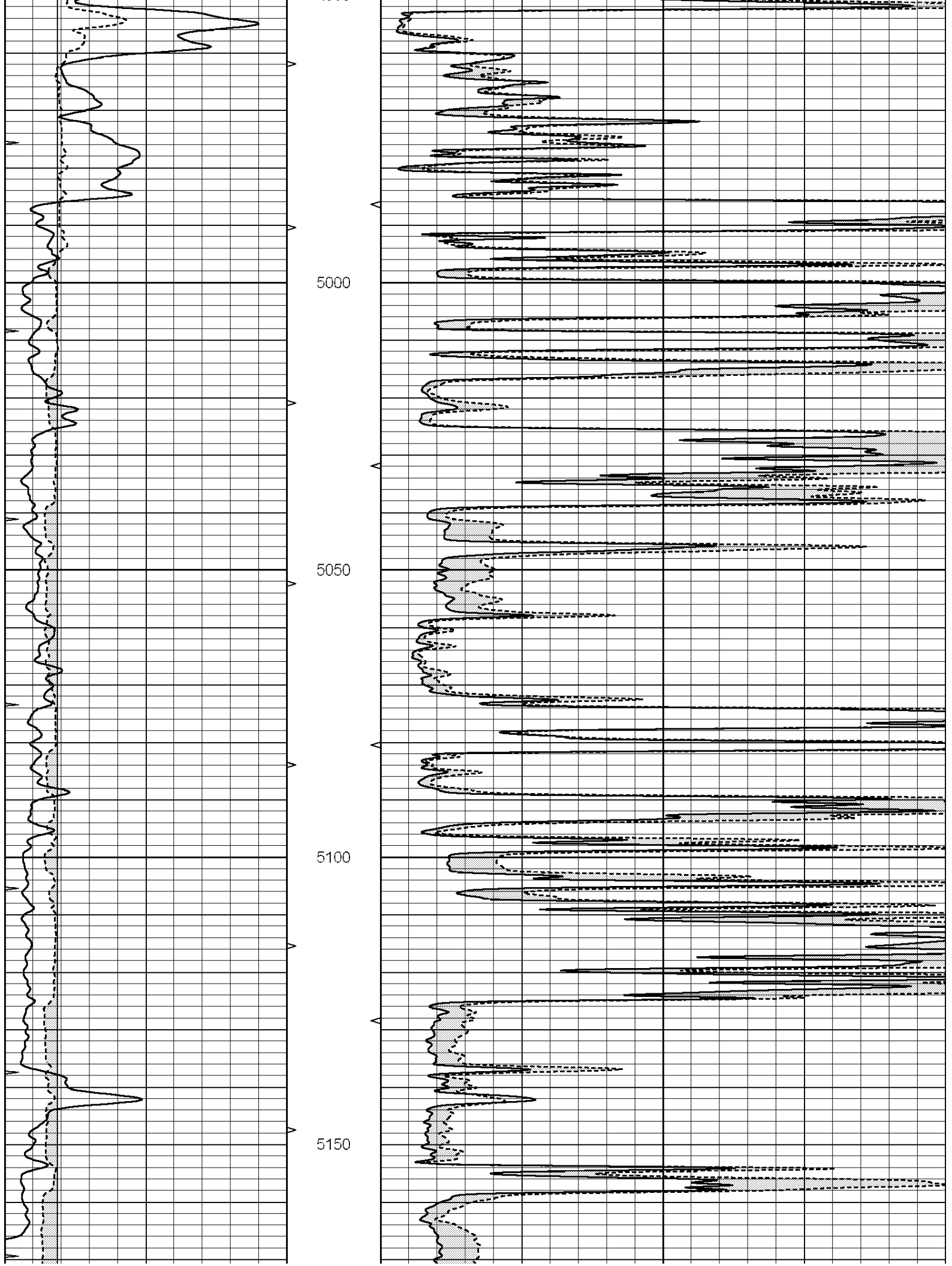
REPEAT SECTION

Database File: 010041pe.db
 Dataset Pathname: pass6.5
 Presentation Format: micro
 Dataset Creation: Tue Jan 08 01:40:12 2013
 Charted by: Depth in Feet scaled 1:240

0	GAMMA RAY (GAPI)	150	ABHV	0	MEL1.5 (Ohm-m)	40
---	------------------	-----	------	---	----------------	----

6	CALIPER (in)	16	10 (ft3)	0 0	MEL2.0 (Ohm-m)	40
0	MINMK	20	TBHV			
			0 (ft3)	10		





		5200			
0	GAMMA RAY (GAPI)	150	ABHV	0	MEL1.5 (Ohm-m) 40
6	CALIPER (in)	16	10 (ft3) 0	0	MEL2.0 (Ohm-m) 40
0	MINMK	20	TBHV		
			0 (ft3) 10		

Calibration Report

Database File: 010041pe.db
 Dataset Pathname: pass7.6
 Dataset Creation: Tue Jan 08 01:41:29 2013

MICRO Calibration Report

Serial Number:	MICRO6	
Tool Model:	PROBE	
Performed:	Tue Jan 08 00:56:41 2013	
Caliper Calibration:	Gain=6.073	Offset=-1.055
References	Low Cal	High Cal
Readings	7.500	15.000
	1.409	2.644
1.5" Calibration:	Gain=33.000	Offset=-0.500
References	Low Cal	High Cal
Readings	0.000	20.000
	0.001	1.216
2" Calibration:	Gain=42.000	Offset=-0.800
References	Low Cal	High Cal
Readings	0.000	20.000
	0.004	0.985

Gamma Ray Calibration Report

Serial Number:	GR4	
Tool Model:	OPEN	
Performed:	Sat Jan 05 12:34:29 2013	
Calibrator Value:	200.0	GAPI
Background Reading:	0.0	cps
Calibrator Reading:	189.0	cps
Sensitivity:	2.0000	GAPI/cps