



**COMPLETION
& PRODUCTION
SERVICES CO.**

**MICRO
LOG**

Company	MAI OIL OPERATIONS, INC.	Company	MAI OIL OPERATIONS, INC.
Well	MICHEL "B" #5	Well	MICHEL "B" #5
Field	HALL - GURNEY	Field	HALL - GURNEY
County	RUSSELL	County	RUSSELL
State	KANSAS	State	KANSAS
Location:	API # : 15-167-23859-0000	Other Services	CDL/CNL DIL
Permanent Datum	GROUND LEVEL	Elevation	1744
Log Measured From	KELLY BUSHING 8' A.G.L.	K.B.	1752
Drilling Measured From	KELLY BUSHING	D.F.	1750
		G.L.	1744
	SEC 36 TWP 14S RGE 14W		

Date	3/5/13
Run Number	TWO
Depth Driller	3210
Depth Logger	3211
Bottom Logged Interval	3209
Top Log Interval	2200
Casing Driller	8 5/8" @ 473'
Casing Logger	473
Bit Size	7 7/8"
Type Fluid in Hole	CHEMICAL MUD
Density / Viscosity	9.3/58
pH / Fluid Loss	11.5/9.6
Source of Sample	FLOWLINE
Rim @ Meas. Temp	.400 @ 80F
Rmf @ Meas. Temp	.300 @ 80F
Rmc @ Meas. Temp	.480 @ 80F
Source of Rmf / Rmc	MEASUREMENT
Rim @ BHT	.294 @ 109F
Time Circulation Stopped	3.5 HOURS
Time Logger on Bottom	11:00 A.M.
Maximum Recorded Temperature	109F
Equipment Number	4854
Location	HAYS, KANSAS
Recorded By	JEFF LUEBBERS
Witnessed By	VYATT URBAN

<<< Fold Here >>>

All interpretations are opinions based on inferences from electrical or other measurements and we cannot and do not guarantee the accuracy or correctness of any interpretation, and we shall not, except in the case of gross or willful negligence on our part, be liable or responsible for any loss, costs, damages, or expenses incurred or sustained by anyone resulting from any interpretation made by any of our officers, agents or employees. These interpretations are also subject to our general terms and conditions set out in our current Price Schedule.

Comments

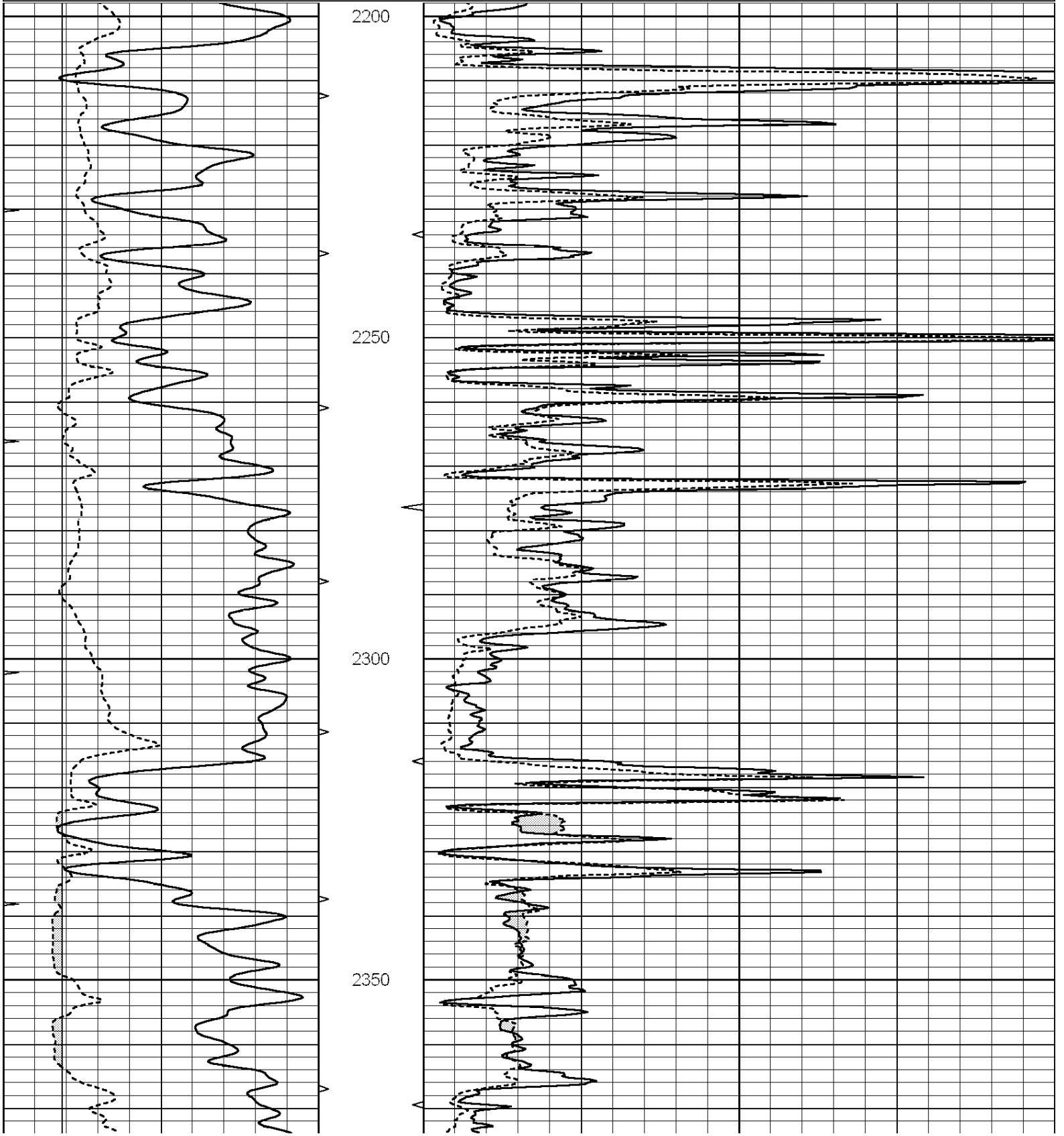
THANK YOU FOR USING "NABORS" HAYS, KANSAS (785) 628-6395
DIRECTIONS
RUSSELL, KS. & I-70, 5S. ON HWY 281 TO "FAIRFIELD RD.", 1 1/4E., S. INTO

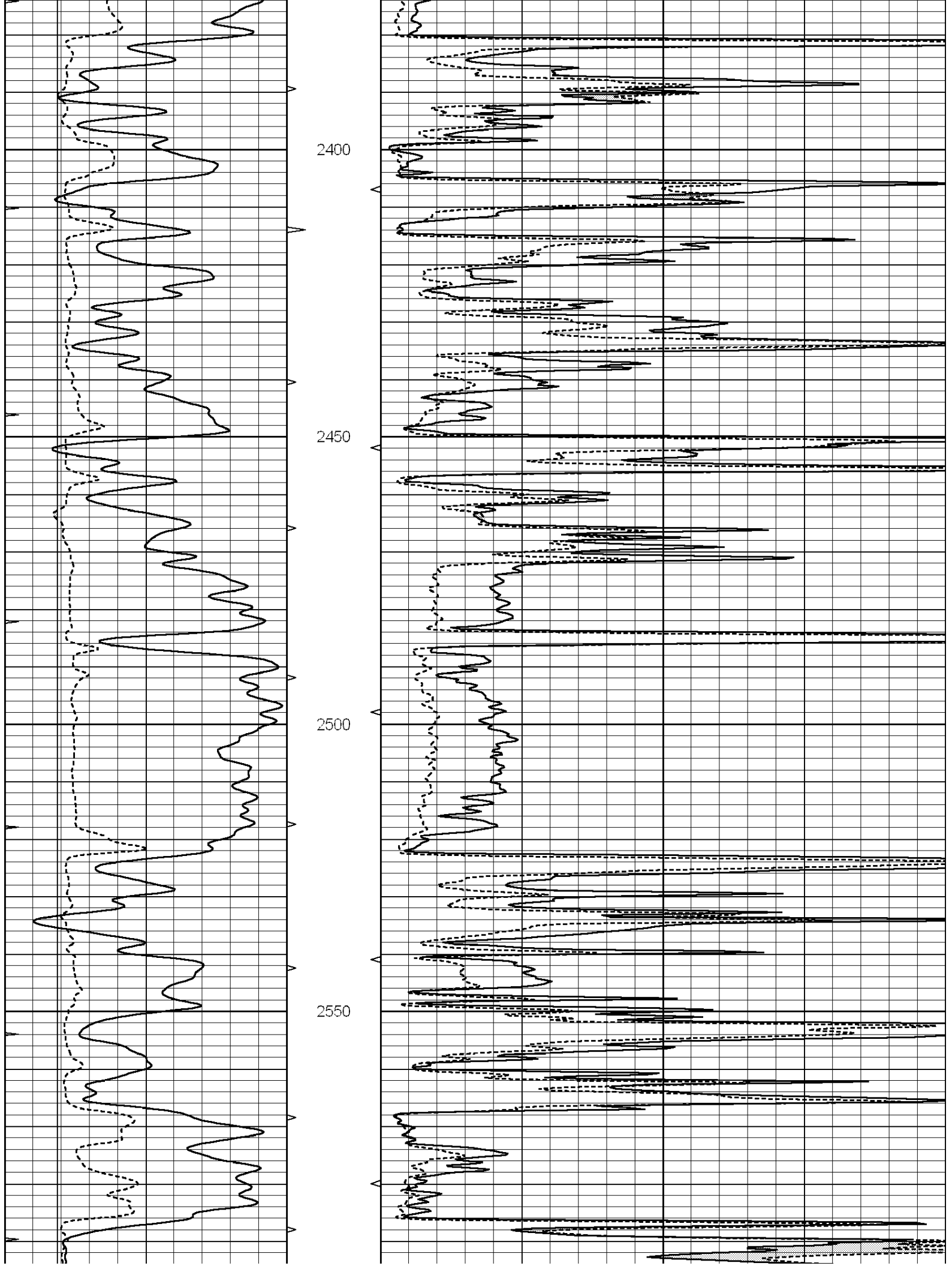


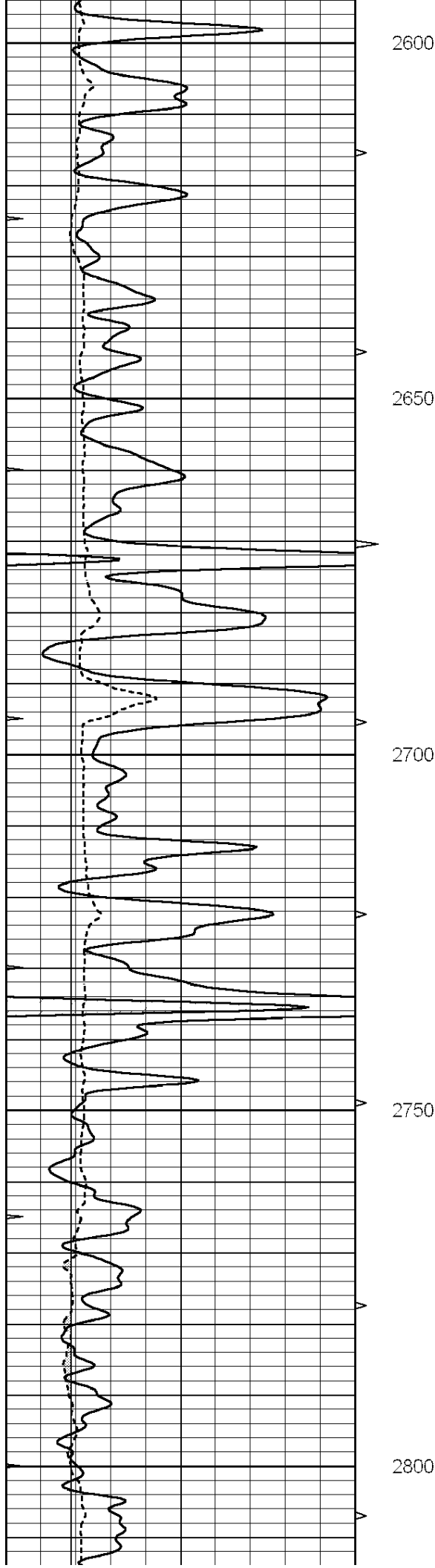
MAIN SECTION

Database File: 010425ddn.db
 Dataset Pathname: pass7.3
 Presentation Format: micro
 Dataset Creation: Fri Mar 15 13:54:14 2013
 Charted by: Depth in Feet scaled 1:240

0	GAMMA RAY (GAPI)	150	ABHV	0	MEL1.5 (Ohm-m)	40
6	CALIPER (in)	16	10 (ft3)	0	MEL2.0 (Ohm-m)	40
0	MINMK	20	TBHV			
			0 (ft3)	10		







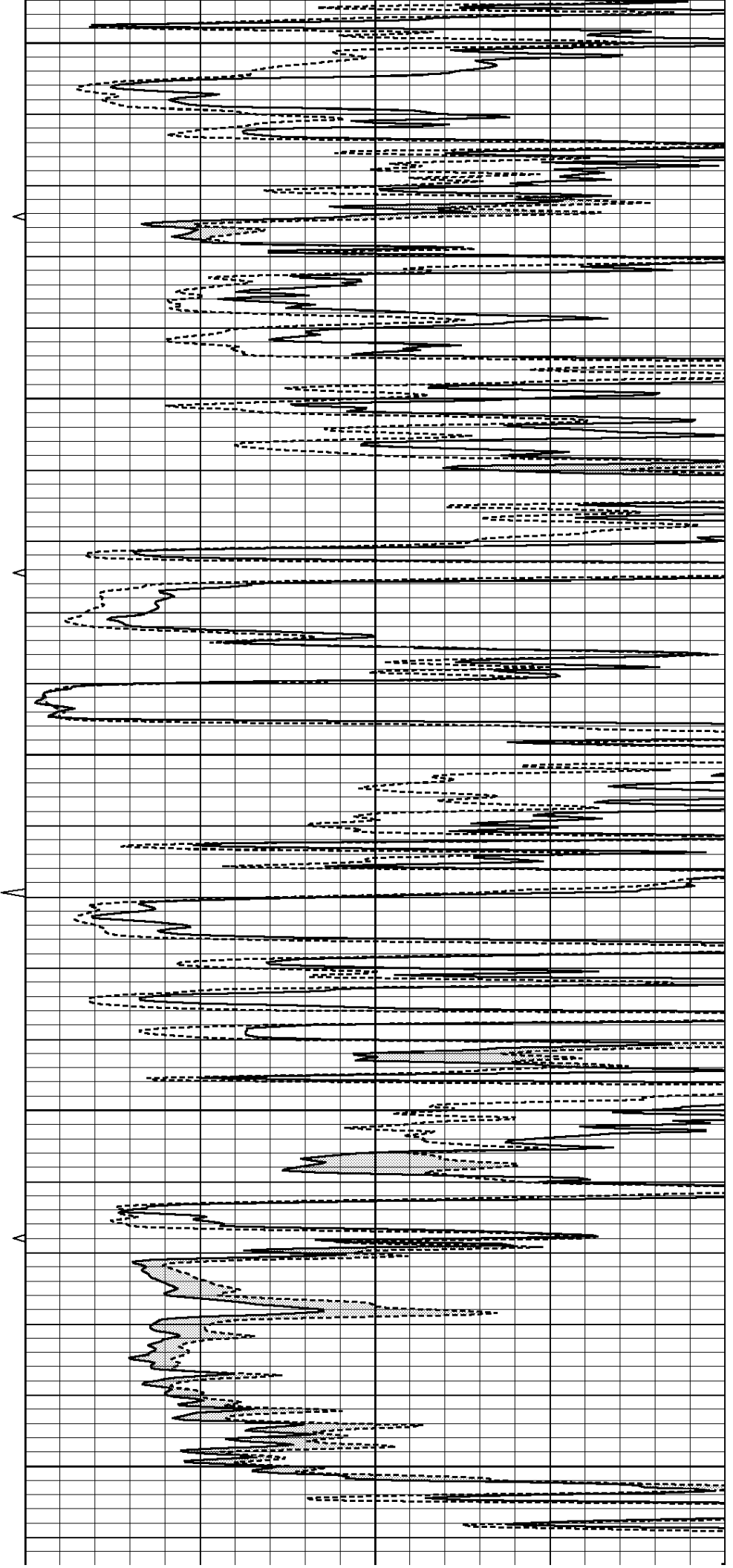
2600

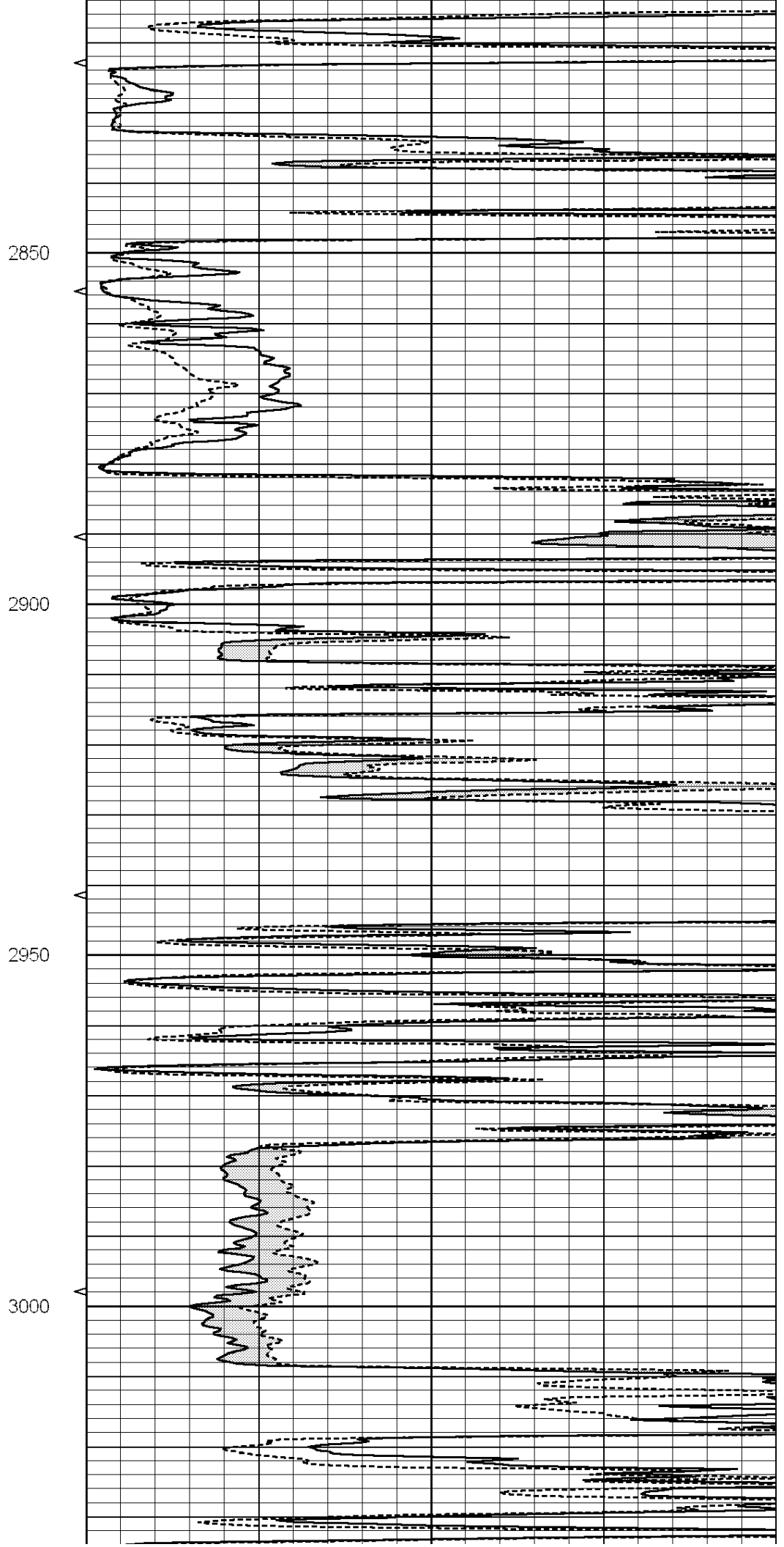
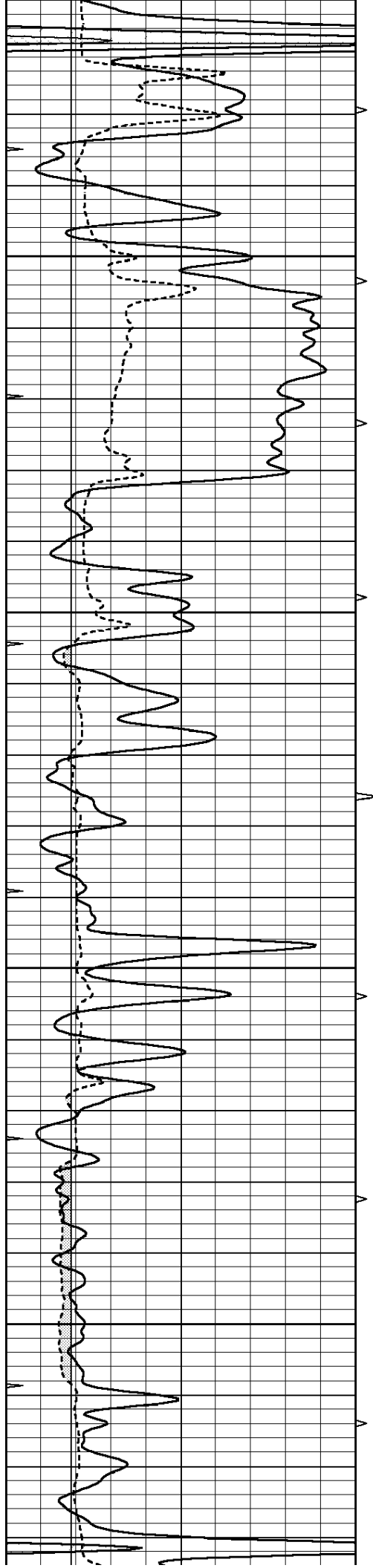
2650

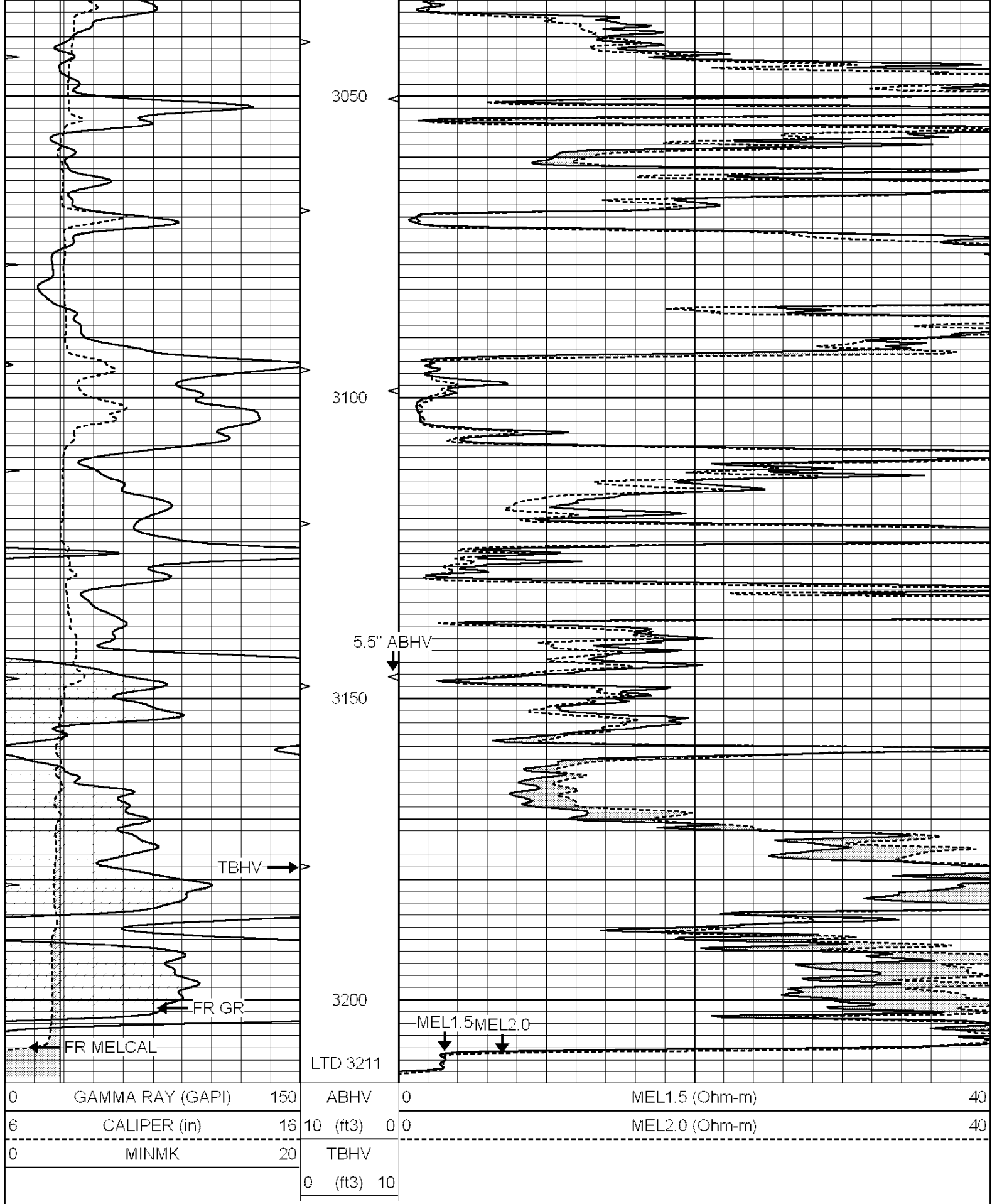
2700

2750

2800





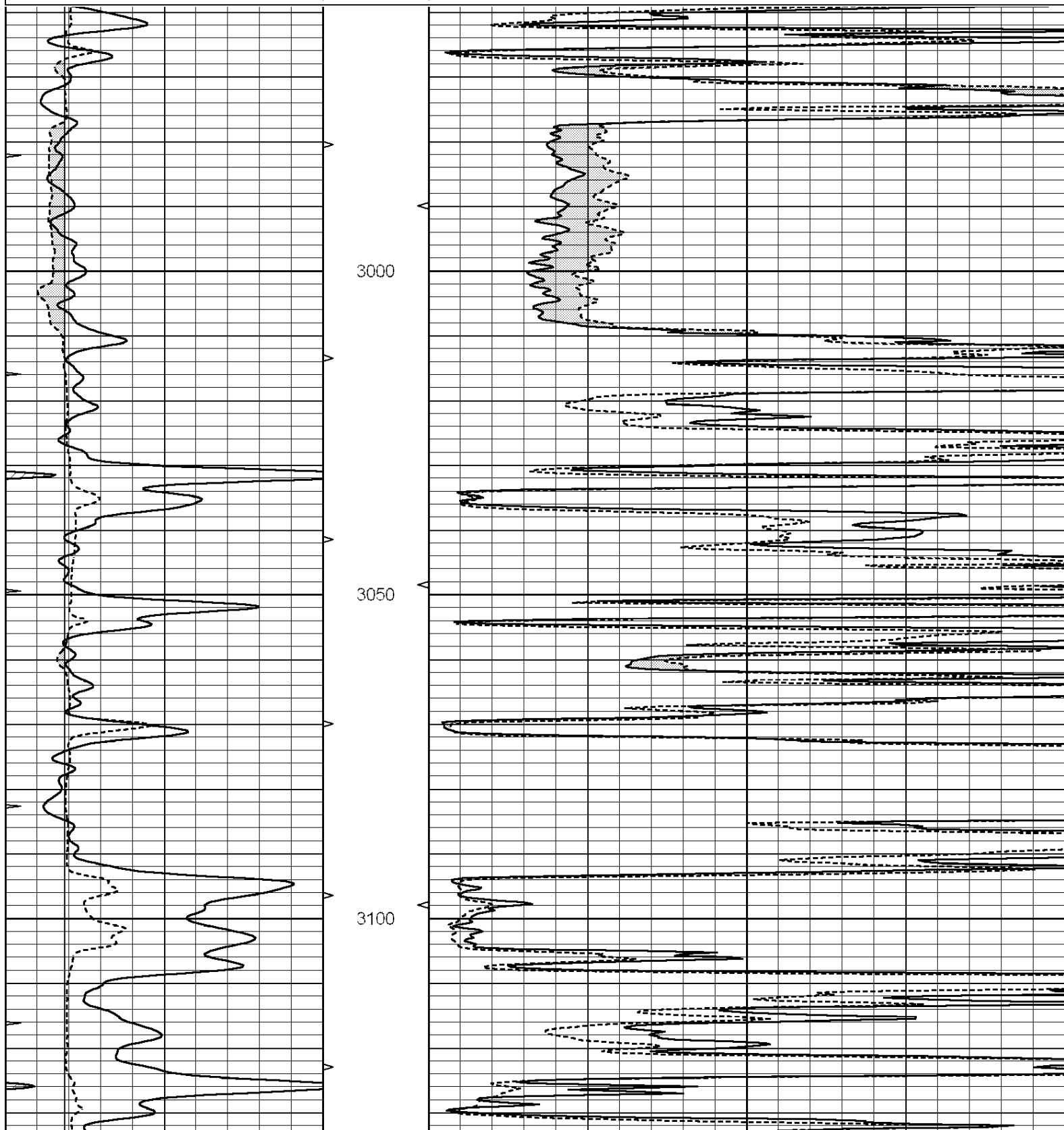


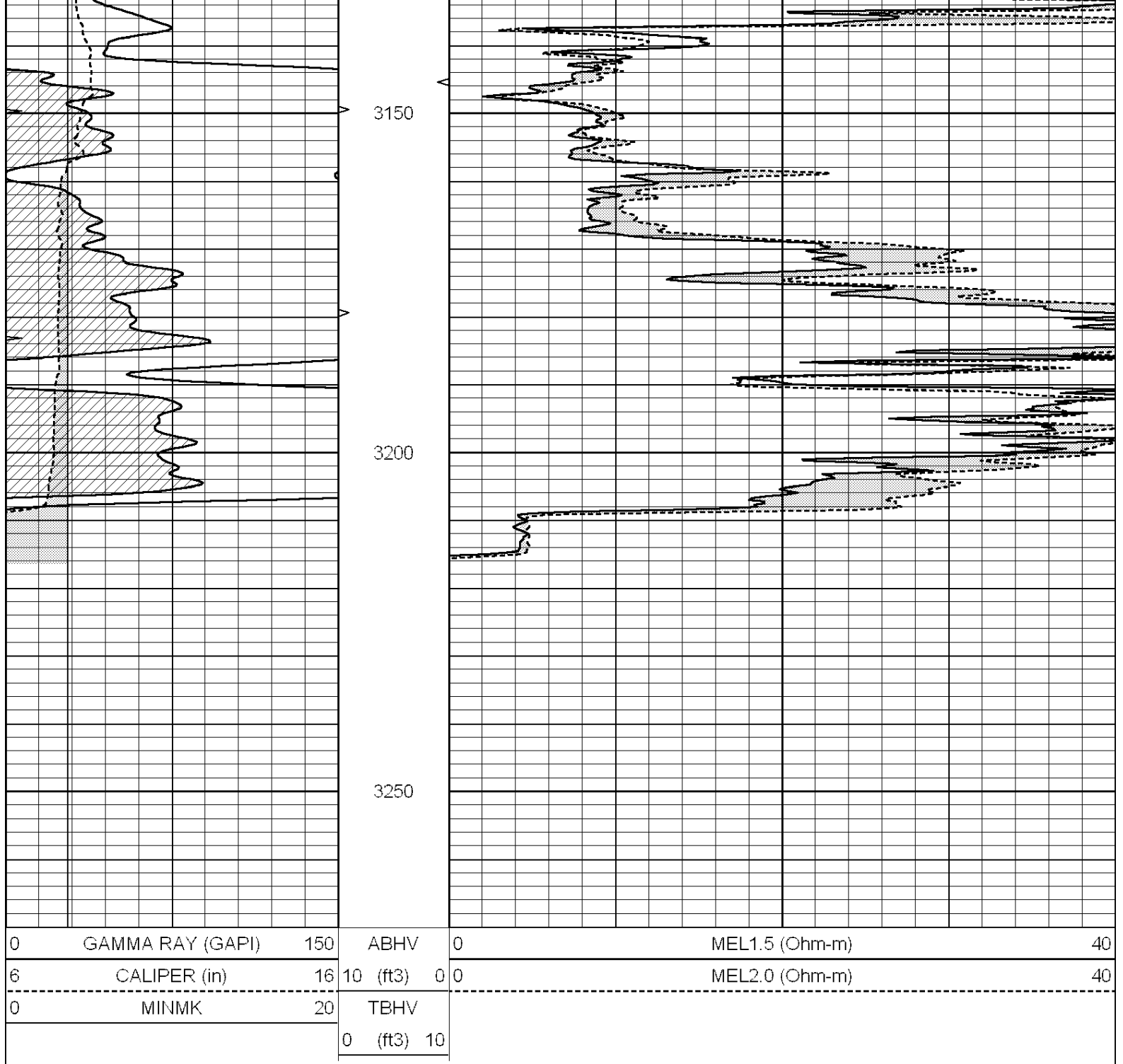
COMPLETION
& PRODUCTION

REPEAT SECTION

Database File: 010425ddn.db
 Dataset Pathname: pass6.2
 Presentation Format: micro
 Dataset Creation: Fri Mar 15 13:12:07 2013 by Calc SOC 120430
 Charted by: Depth in Feet scaled 1:240

0	GAMMA RAY (GAPI)	150	ABHV	0	MEL1.5 (Ohm-m)	40
6	CALIPER (in)	16	10 (ft3)	0 0	MEL2.0 (Ohm-m)	40
0	MINMK	20	TBHV			
			0 (ft3)	10		





Calibration Report

Database File: 010425ddn.db
 Dataset Pathname: pass7.3
 Dataset Creation: Fri Mar 15 13:54:14 2013

MICRO Calibration Report

Serial Number: 2
 Tool Model: PROBE
 Performed: Tue Mar 05 12:07:31 2013

Caliper Calibration: Gain=7.512 Offset=0.693

References	Low Cal	High Cal
Readings	7.300	15.000
	0.880	1.905

1.5" Calibration: Gain=48.000 Offset=-1.800

1" Calibration:	Gain=15.000	Offset=1.550
References	Low Cal 0.000	High Cal 20.000
Readings	0.015	0.458

2" Calibration:	Gain=45.000	Offset=-0.700
References	Low Cal 0.000	High Cal 20.000
Readings	0.003	0.384

Gamma Ray Calibration Report

Serial Number:	GR4	
Tool Model:	OPEN	
Performed:	Fri Mar 15 12:59:42 2013	
Calibrator Value:	200.0	GAPI
Background Reading:	0.0	cps
Calibrator Reading:	189.0	cps
Sensitivity:	2.2000	GAPI/cps