



Pioneer Energy Services

Microresistivity Log

API No.	15-109-21,156-00-00		
Company	Brito Oil Company, Inc.		
Well	Fairleigh "G" No.1-19		
Field	Wildcat		
County	Logan	State	Kansas
Location	400' FNL & 990' FEL		
Sec: 19	Twp: 15S	Rge: 32W	Other Services CNL/CDL DIL

Permanent Datum	Ground Level	Elevation 2791	K.B. 2800
Log Measured From	Kelly Bushing	9 Ft. Above Perm. Datum	D.F. 2791
Drilling Measured From	Kelly Bushing		G.L. 2791
Date	2/27/2013		
Run Number	Two		
Depth Driller	4540		
Depth Logger	4545		
Bottom Logged Interval	4544		
Top Log Interval	3500		
Casing Driller	8.625 @ 236		
Casing Logger	236		
Bit Size	7.875		
Type Fluid in Hole	Chemical		
Salinity,ppm CL	4,000		
Density / Viscosity	9.4	56	
pH / Fluid Loss	9.0	10.4	
Source of Sample	Flowline		
Rm @ Meas. Temp	.46	@ 52	
Rmf @ Meas. Temp	.35	@ 52	
Rmc @ Meas. Temp	.62	@ 52	
Source of Rmf / Rmc	Charts		
Rm @ BHT	.2	@ 121	
Operating Rig Time	4 Hours		
Max Rec. Temp. F	121		
Equipment Number	17		
Location	Hays		
Recorded By	C. Desaire		
Witnessed By	Kevin Kessler		

<<< Fold Here >>>

All interpretations are opinions based on inferences from electrical or other measurements and we cannot and do not guarantee the accuracy or correctness of any interpretation, and we shall not, except in the case of gross or willful negligence on our part, be liable or responsible for any loss, costs, damages, or expenses incurred or sustained by anyone resulting from any interpretation made by any of our officers, agents or employees. These interpretations are also subject to our general terms and conditions set out in our current Price Schedule.

Comments

Thank you for using Log-Tech, Inc.
(785) 625-3858

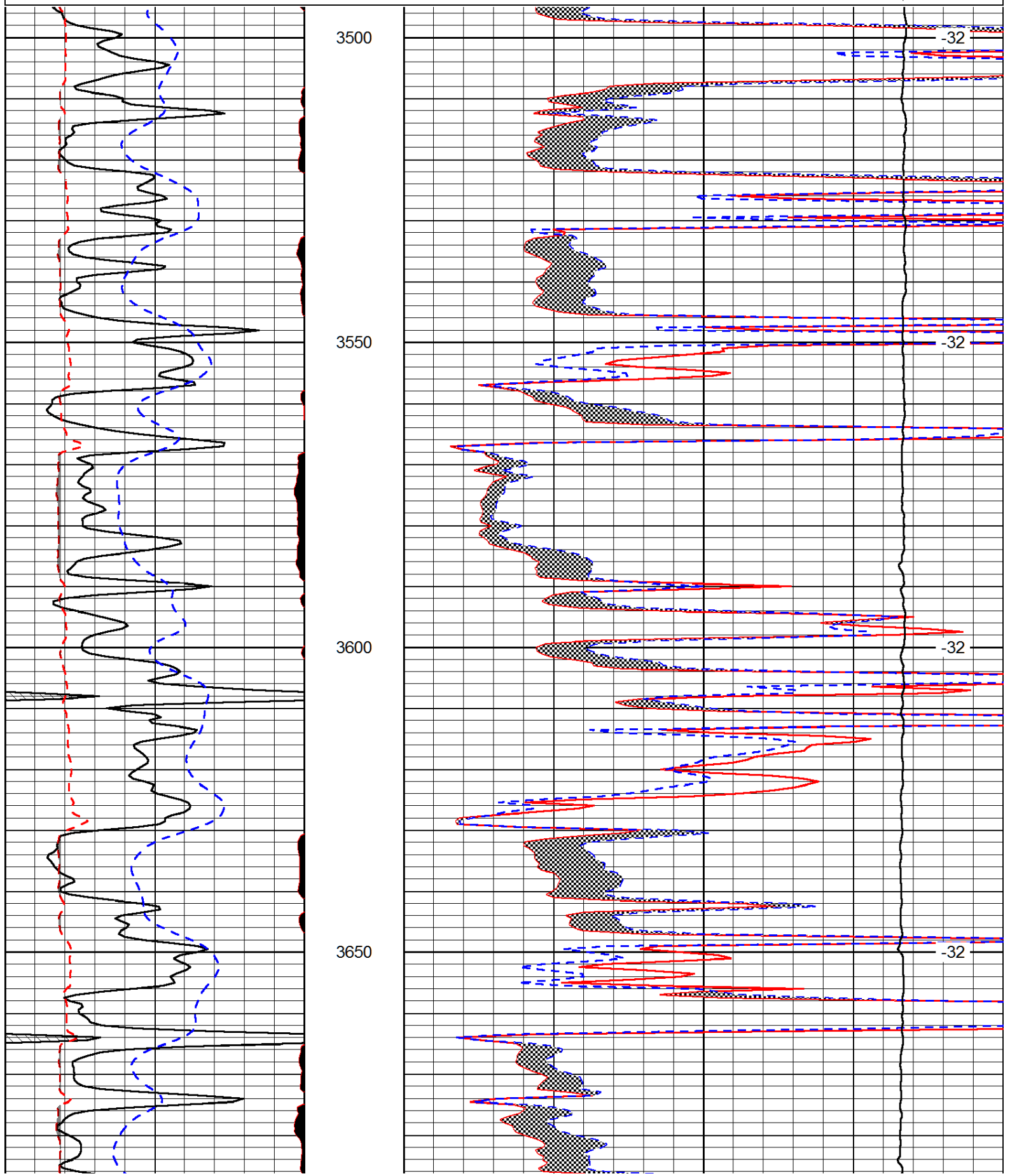
Oakley KS, S to Gold Rd, 4 1/2 W, 2 S to Tank Batt,
1 1/2 E, S between fences to the second gate, E along fence

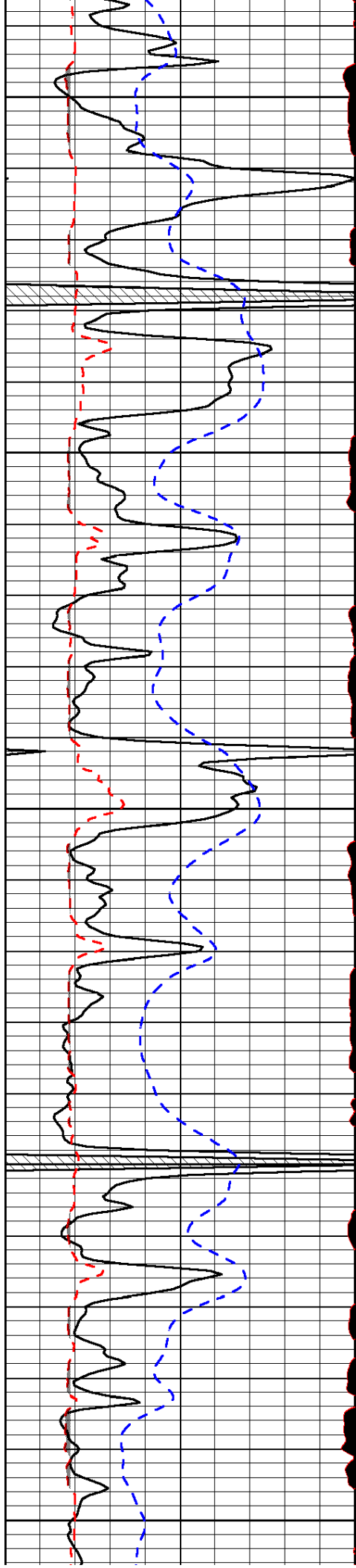
Database File: britohd.db
 Dataset Pathname: dil/britstk
 Presentation Format: micro
 Dataset Creation: Wed Feb 27 13:25:04 2013
 Charted by: Depth in Feet scaled 1:240

0	Gamma Ray (GAPI)	150
6	MCAL (in)	16
2.875	Mud Cake (in)	7.875
-200	SP (mV)	0

0	Micro Inverse 1 X 1 (Ohm-m)	40
0	Micro Normal 2" (Ohm-m)	40
10000	Line Weight (lb)	0

LSPD
(ft/min)





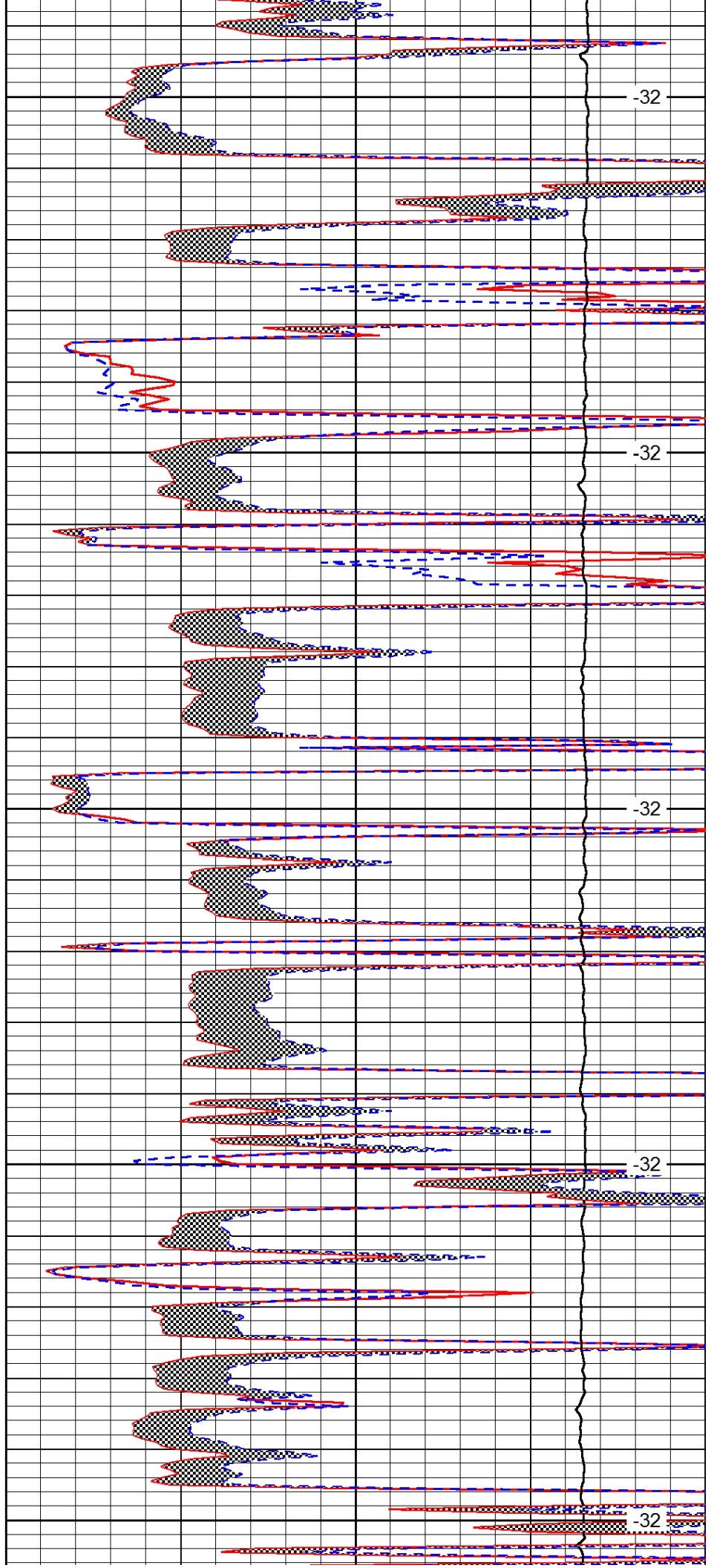
3700

3750

3800

3850

3900



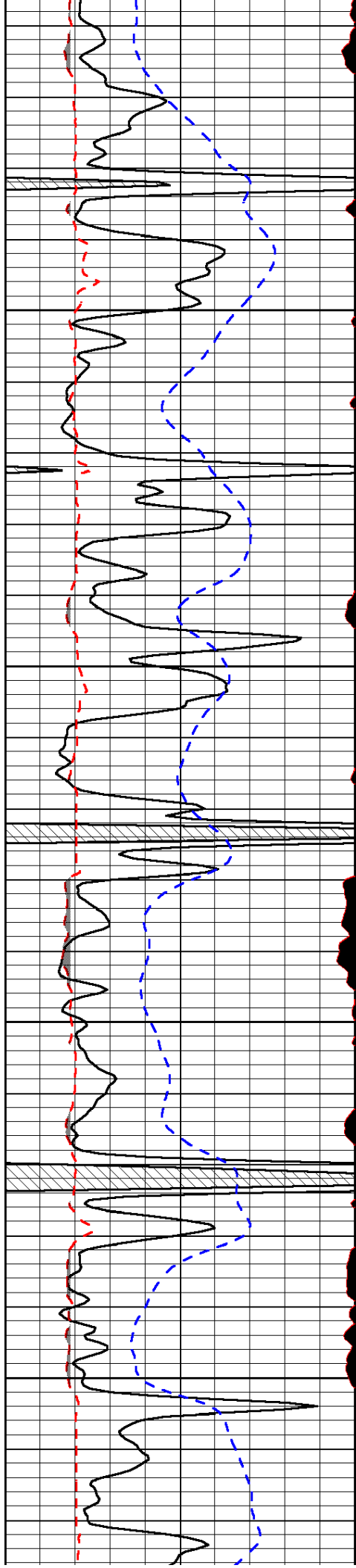
-32

-32

-32

-32

-32

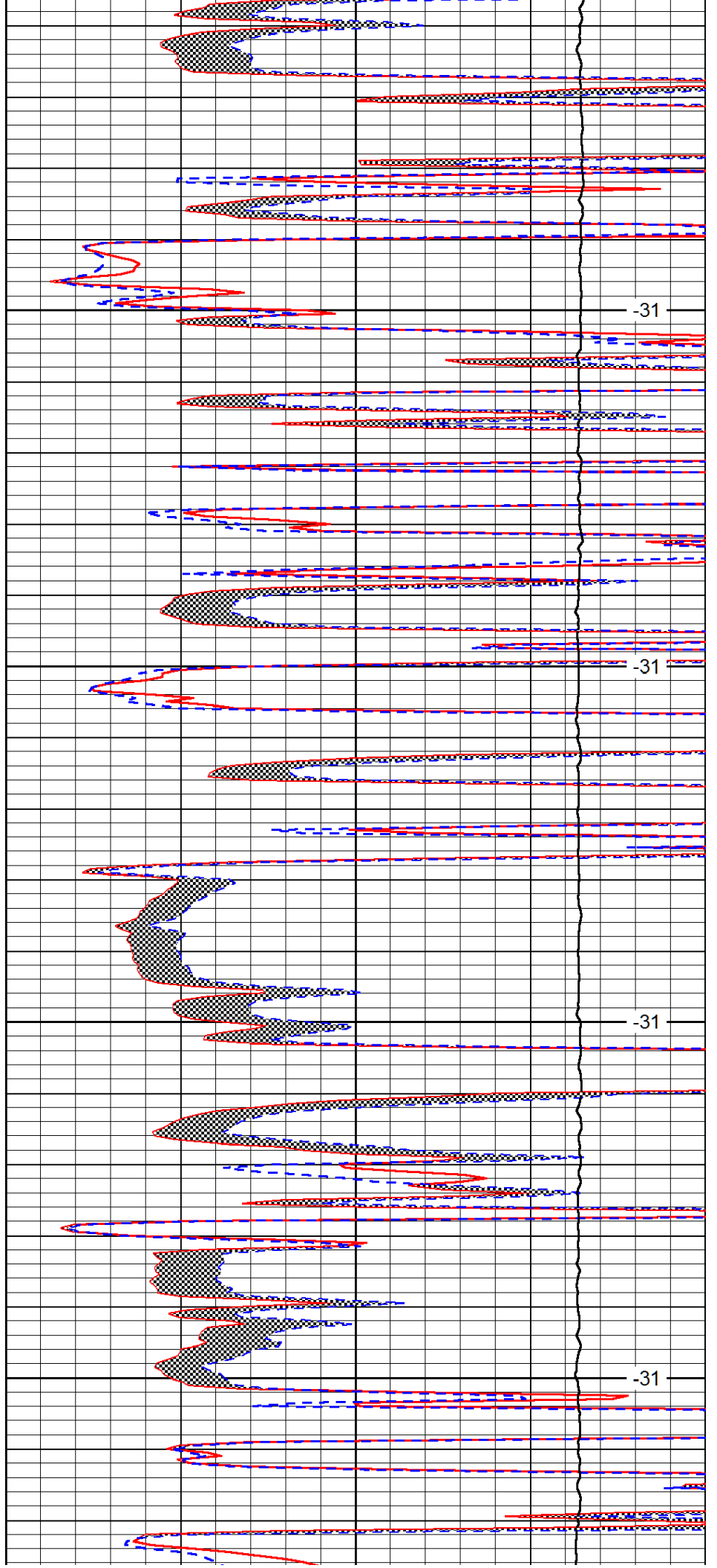


3950

4000

4050

4100

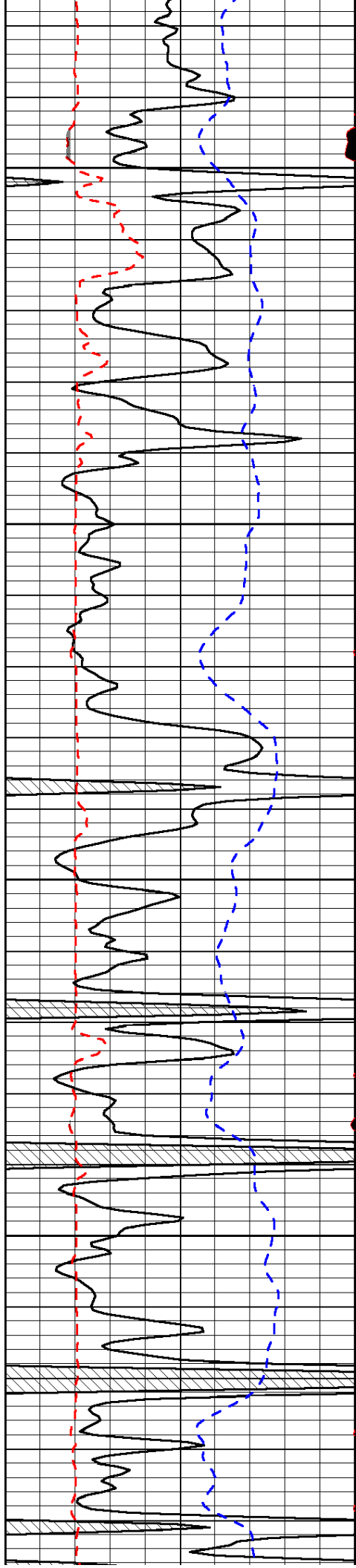


-31

-31

-31

-31

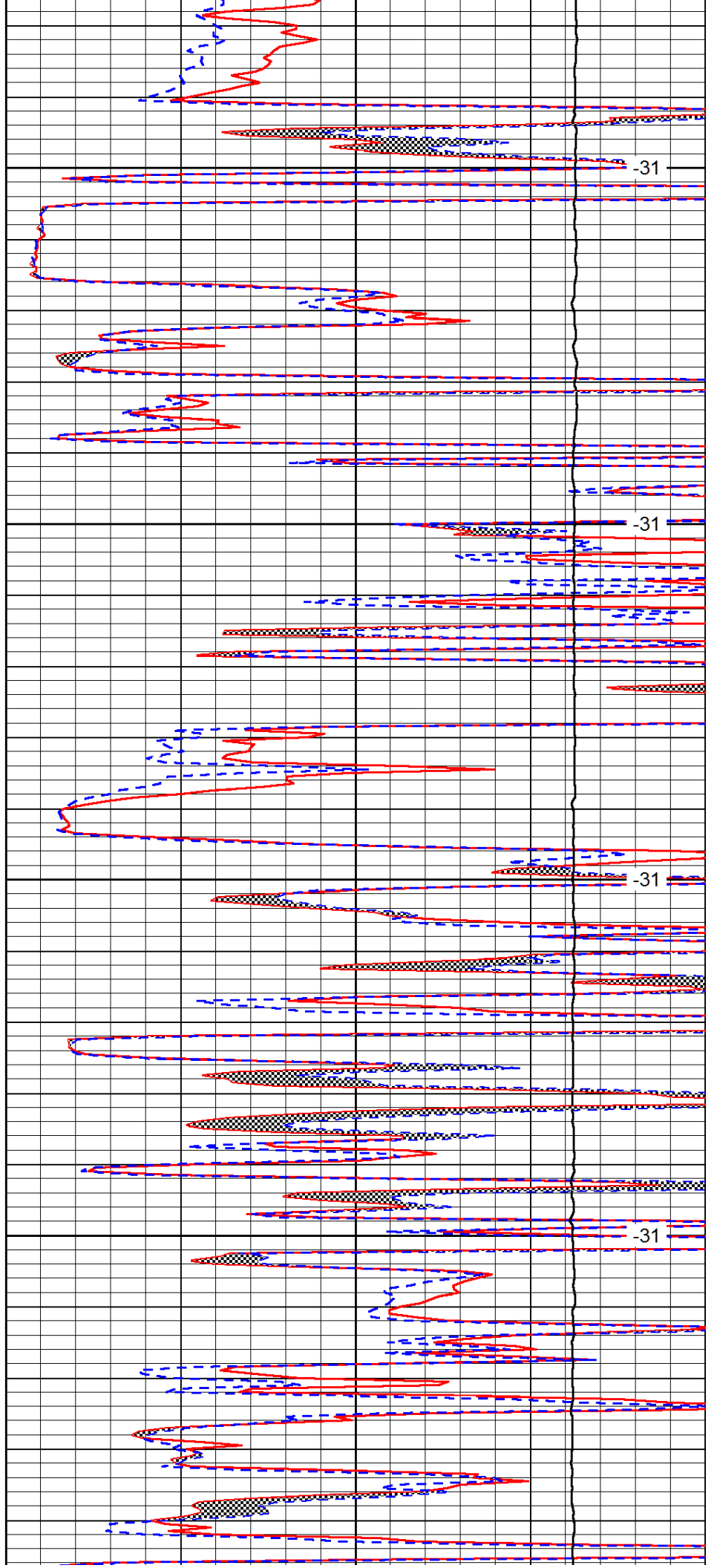


4150

4200

4250

4300

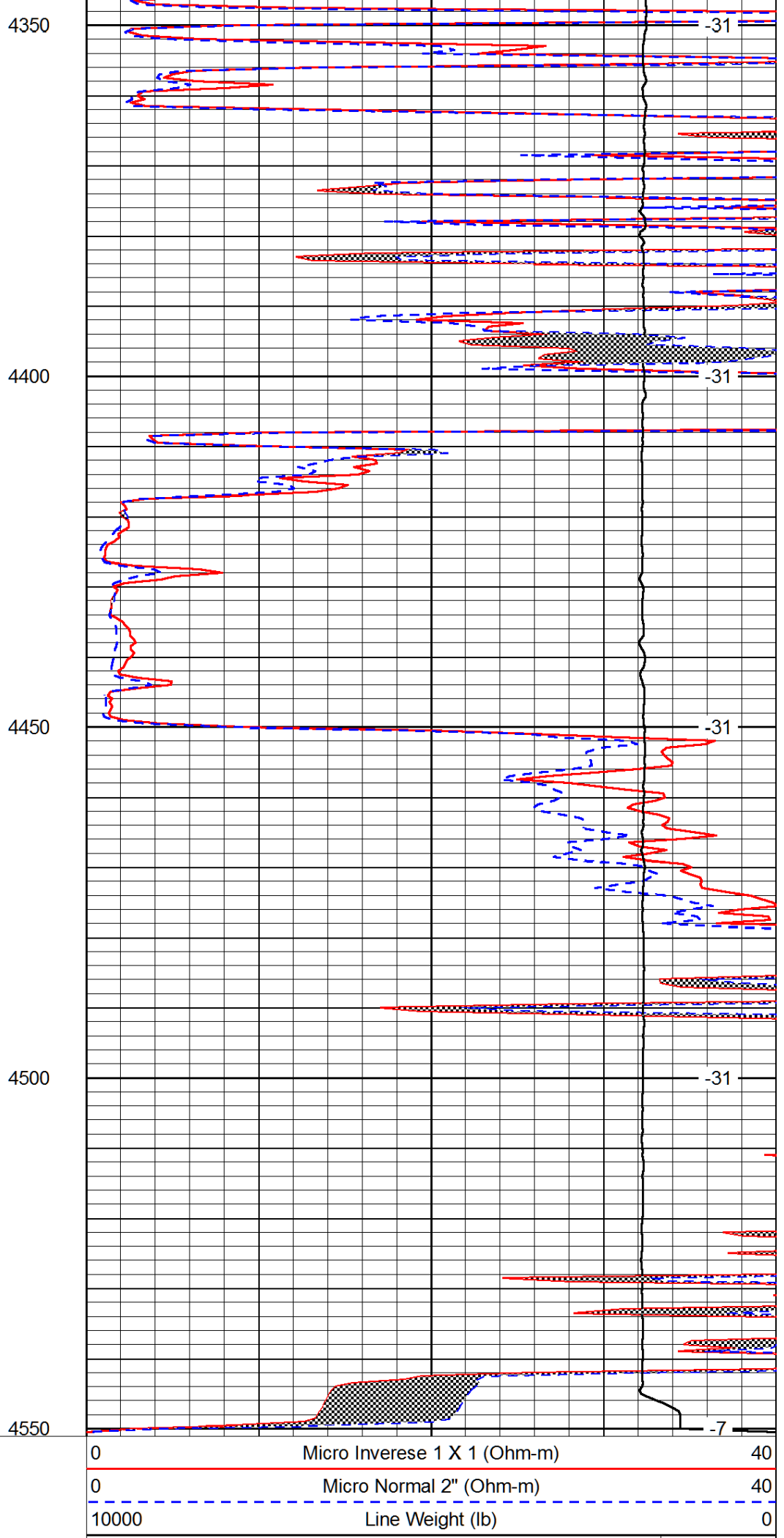
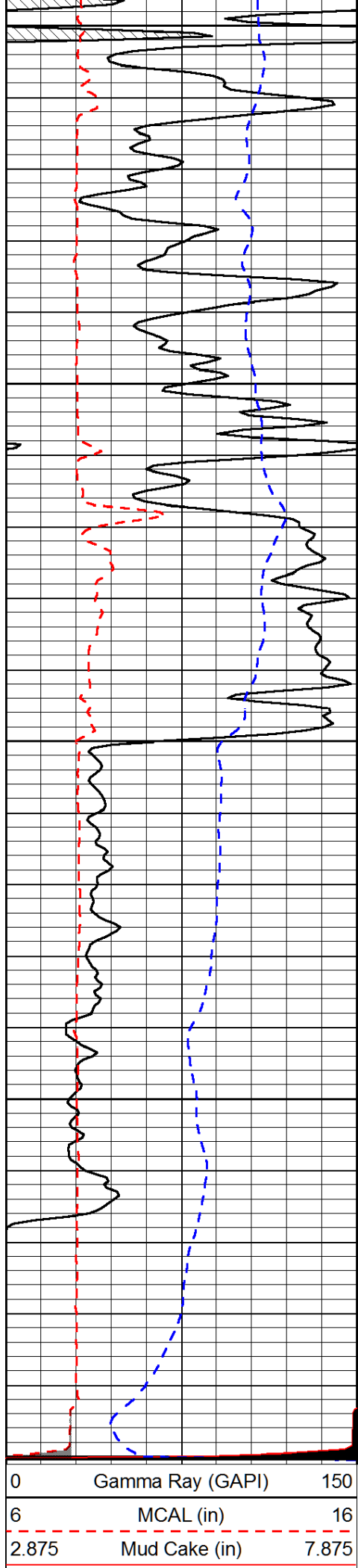


-31

-31

-31

-31



-200 SP (mV) 0

LSPD
(ft/min)