



**COMPLETION  
& PRODUCTION  
SERVICES CO.**

**DUAL  
INDUCTION  
LOG**

Company RITCHIE EXPLORATION, INC.  
Well WRAY 18A #1  
Field ANTELOPE RIDGE NORTHWEST  
County GOVE State KANSAS

Company RITCHIE EXPLORATION, INC.  
Well WRAY 18A #1  
Field ANTELOPE RIDGE NORTHWEST  
County GOVE  
State KANSAS

Location: API #: 15-063-22078-00-00  
SW - SE - NE  
2140' FNL & 1100' FEL  
SEC 18 TWP 13S RGE 31W  
Permanent Datum GROUND LEVEL Elevation 2930  
Log Measured From KELLY BUSHING 5' A.G.L.  
Drilling Measured From KELLY BUSHING  
Other Services  
CNL/CDL  
Elevation  
K.B. 2935  
D.F. 2933  
G.L. 2930

Date	1/20/13		
Run Number	ONE		
Depth Driller	4720		
Depth Logger	4725		
Bottom Logged Interval	4723		
Top Log Interval	00		
Casing Driller	219		
Casing Logger	222		
Bit Size	7.875		
Type Fluid in Hole	CHEMICAL MUD	CHLORIDES 8,000	
Density / Viscosity	9.6 / 56		
pH / Fluid Loss	9.0 / 6.4		
Source of Sample	FLOWLINE		
Rim @ Meas. Temp	0.85 @ 60F		
Rmf @ Meas. Temp	0.63 @ 60F		
Rmc @ Meas. Temp	1.02 @ 60F		
Source of Rmf / Rmc	MEASURED		
Rim @ BHT	0.43 @ 122F		
Time Circulation Stopped	2 HOURS		
Time Logger on Bottom			
Maximum Recorded Temperature	125F		
Equipment Number	860		
Location	HAYS, KS.		
Recorded By	IAN MABB		
Witnessed By	MAX LOVELLY		

<<< Fold Here >>>

All interpretations are opinions based on inferences from electrical or other measurements and we cannot and do not guarantee the accuracy or correctness of any interpretation, and we shall not, except in the case of gross or willful negligence on our part, be liable or responsible for any loss, costs, damages, or expenses incurred or sustained by anyone resulting from any interpretation made by any of our officers, agents or employees. These interpretations are also subject to our general terms and conditions set out in our current Price Schedule.

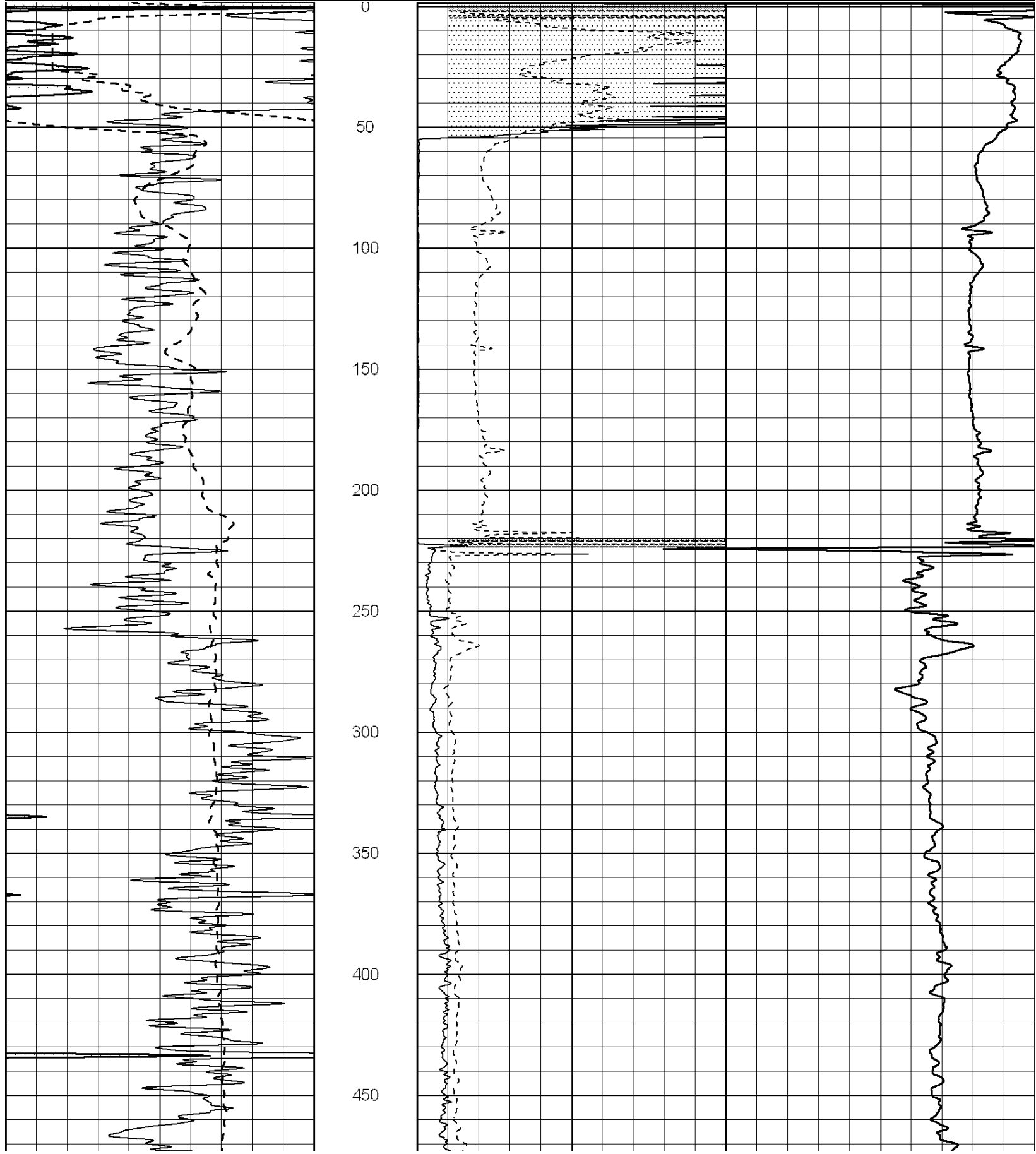
Comments

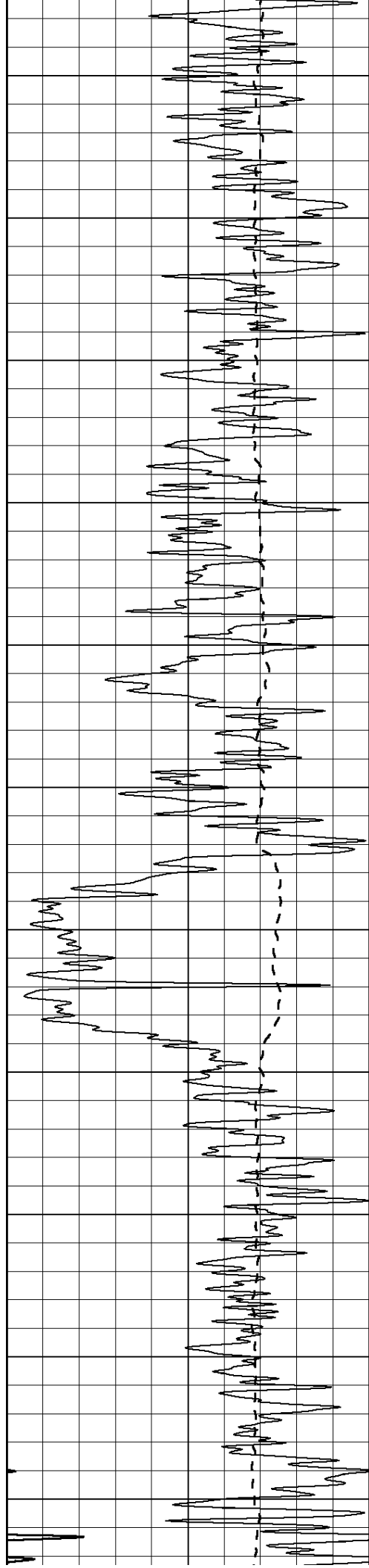
NABORS COMPLETION & PRODUCTION CO.  
785-628-6395

THANK YOU FOR YOUR BUSINESS

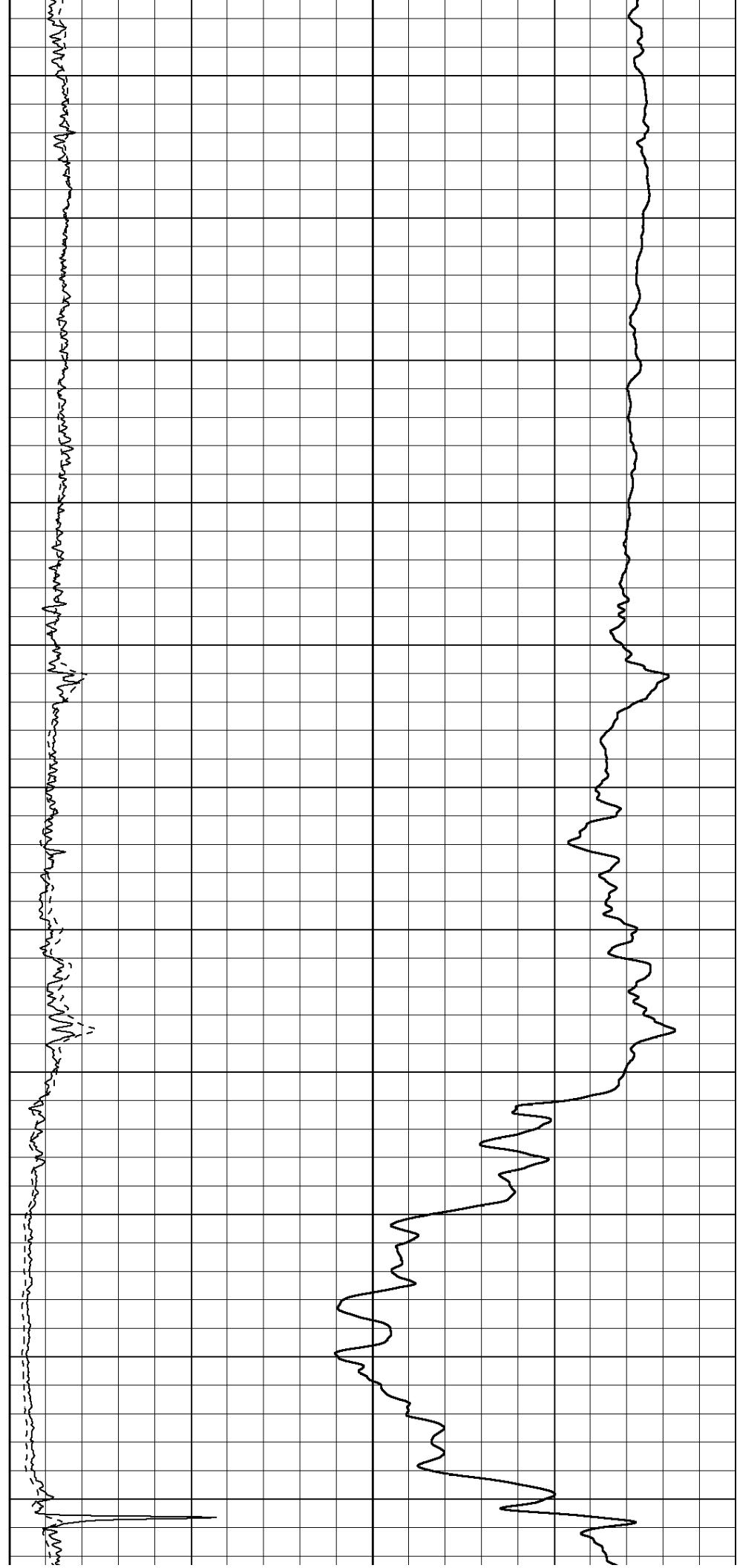
DIRECTIONS: OAKLEY, KS. - 13 MILES SOUTH TO QUAIL RD. - 3 EAST TO RD 12 - 1/2 SOUTH WEST INTO

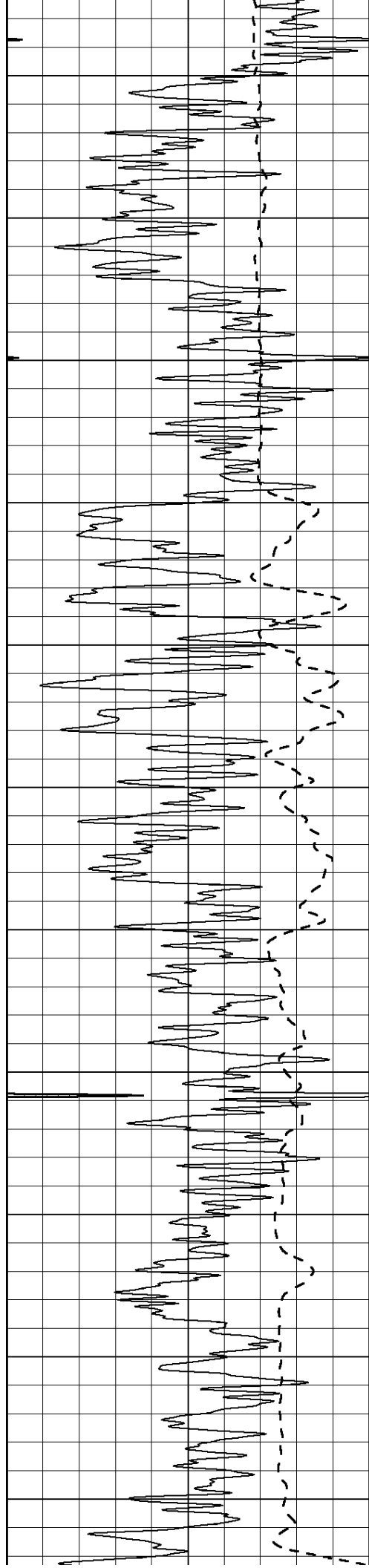
0	Gamma Ray (GAPI)	150	0	RLL3 (Ohm-m)	50				
			0	Deep Induction (Ohm-m)	50				
			1000			CILD (mmho/m)			0
			50	RILD X10 (Ohm-m)	500				
			50	RLL3 X10 (Ohm-m)	500				



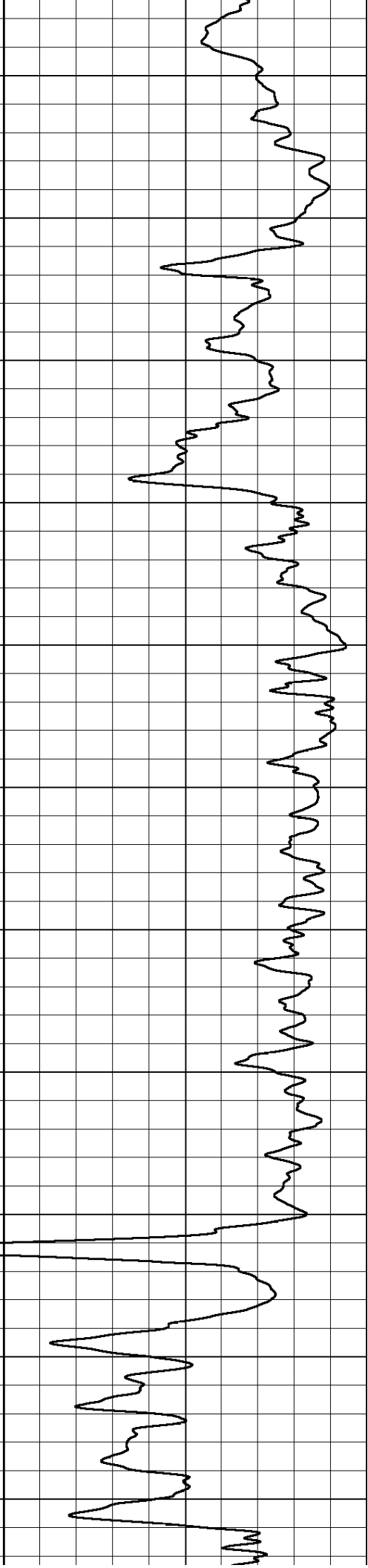
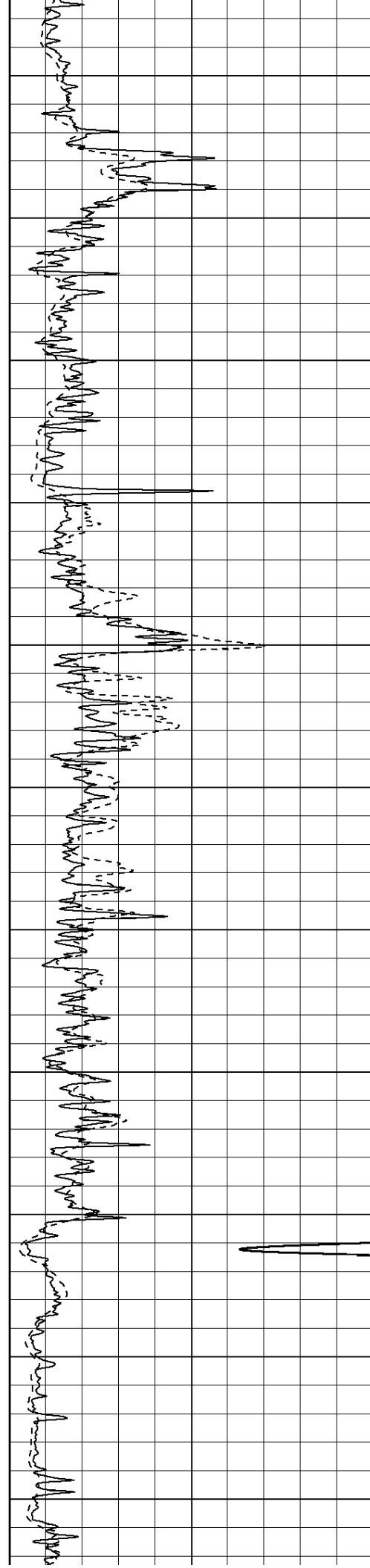


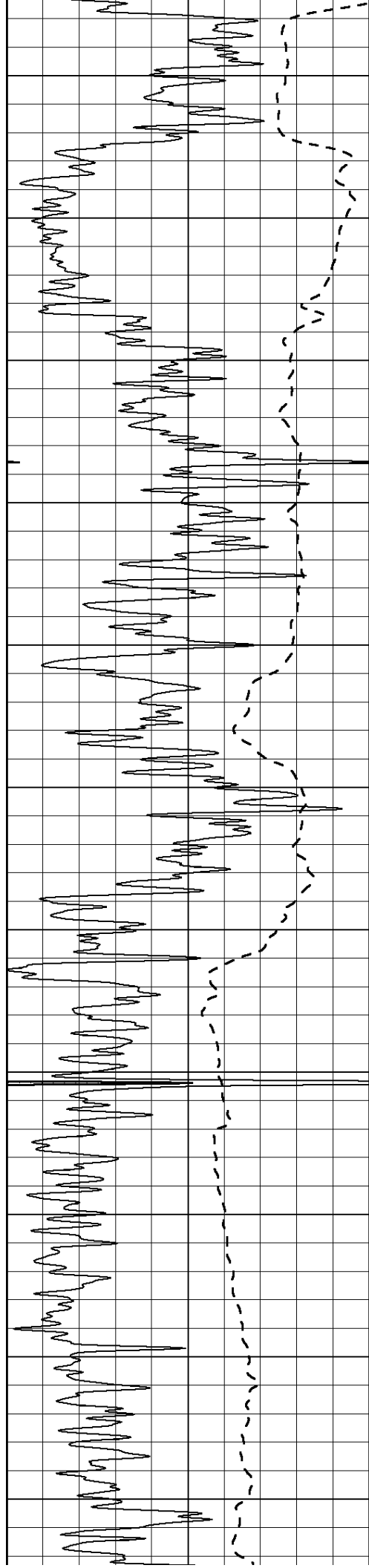
500  
550  
600  
650  
700  
750  
800  
850  
900  
950  
1000



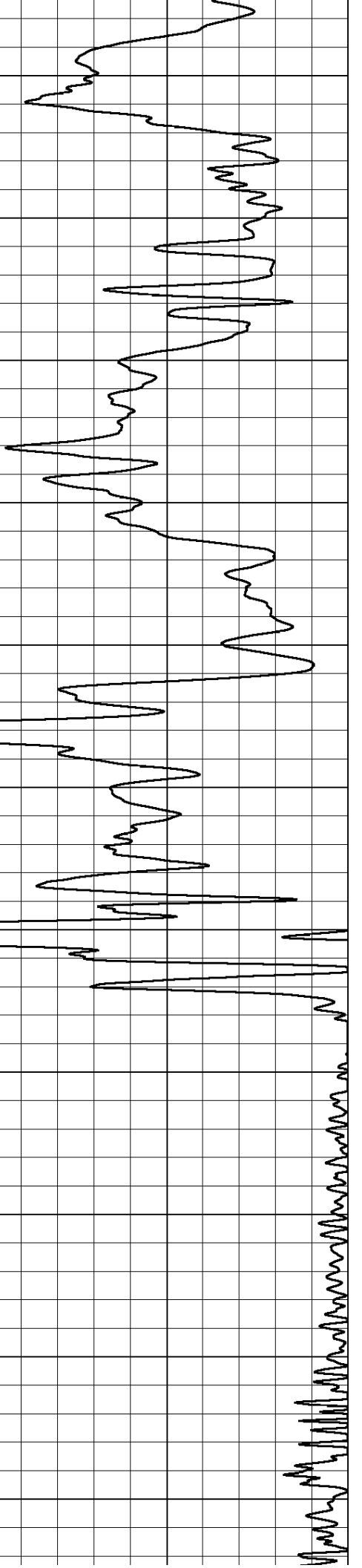
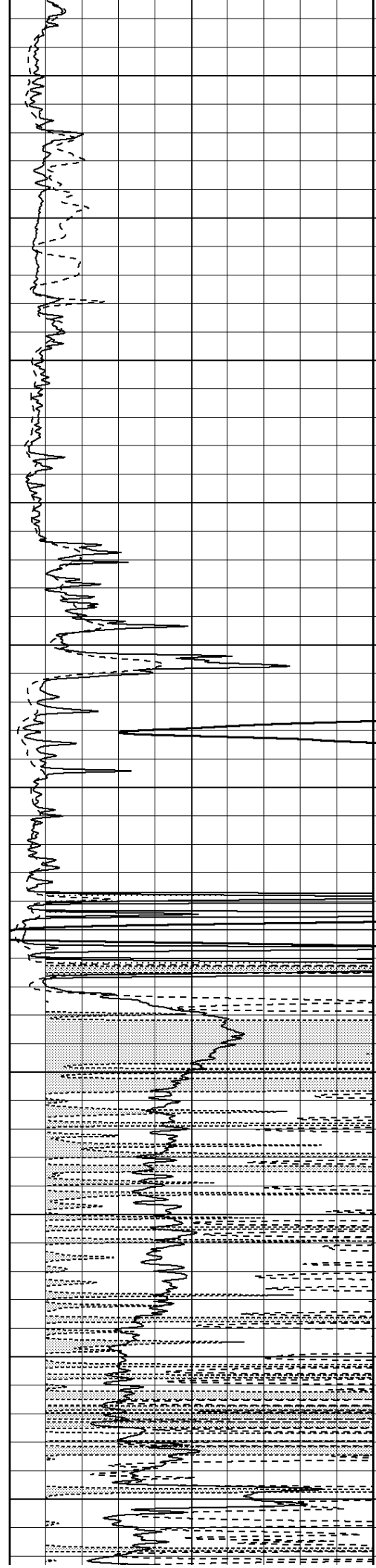


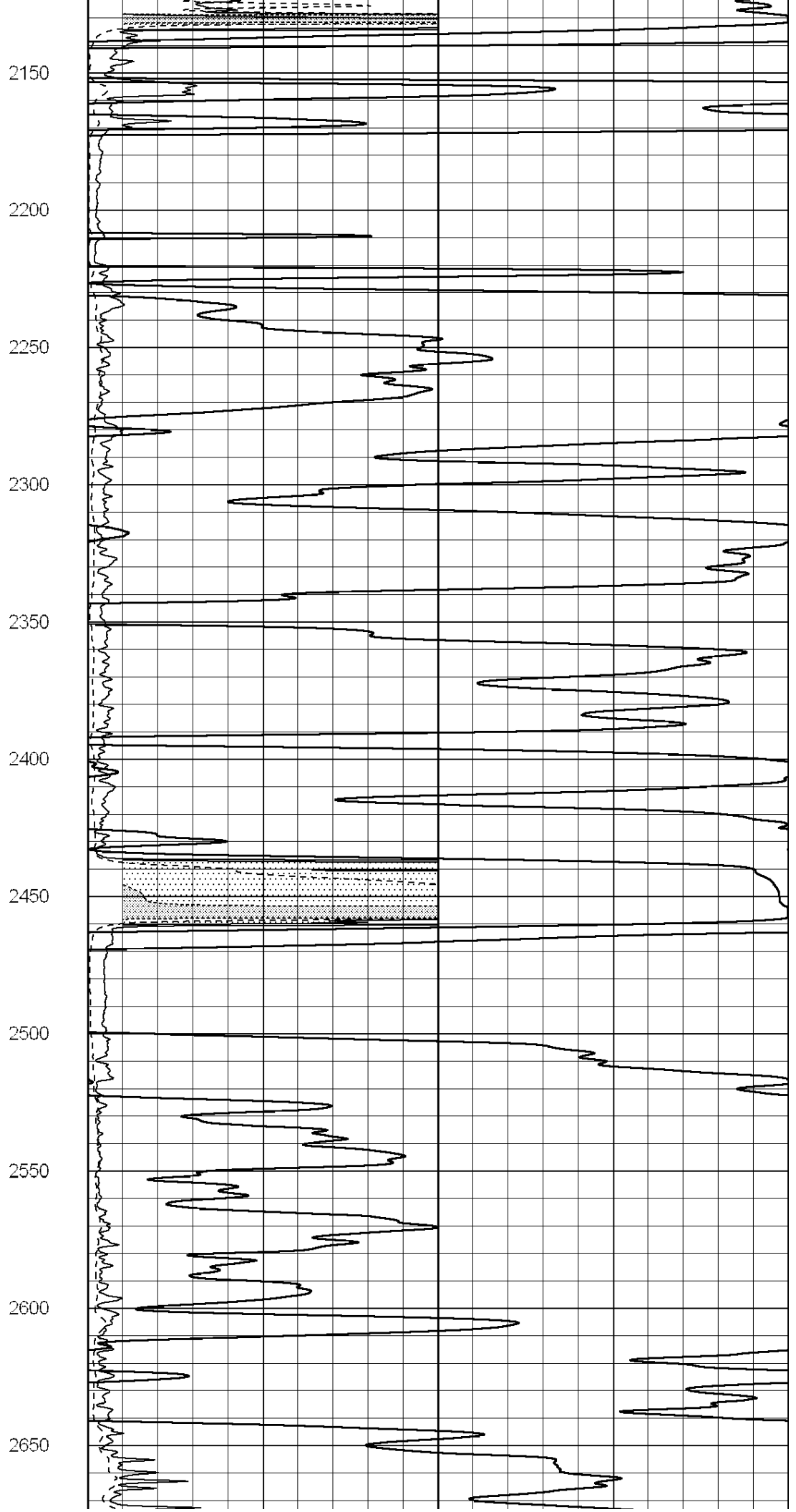
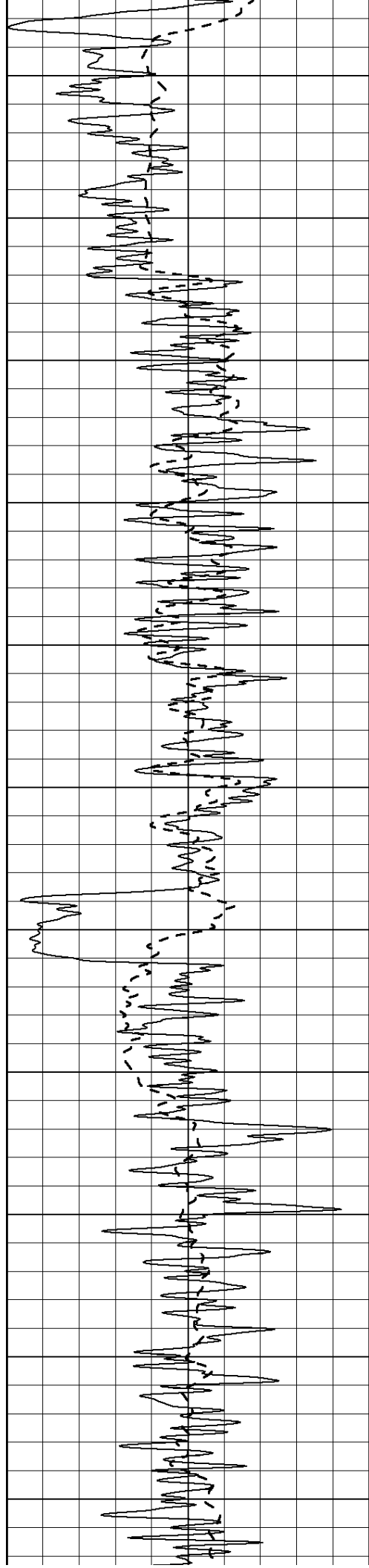
1050  
1100  
1150  
1200  
1250  
1300  
1350  
1400  
1450  
1500  
1550

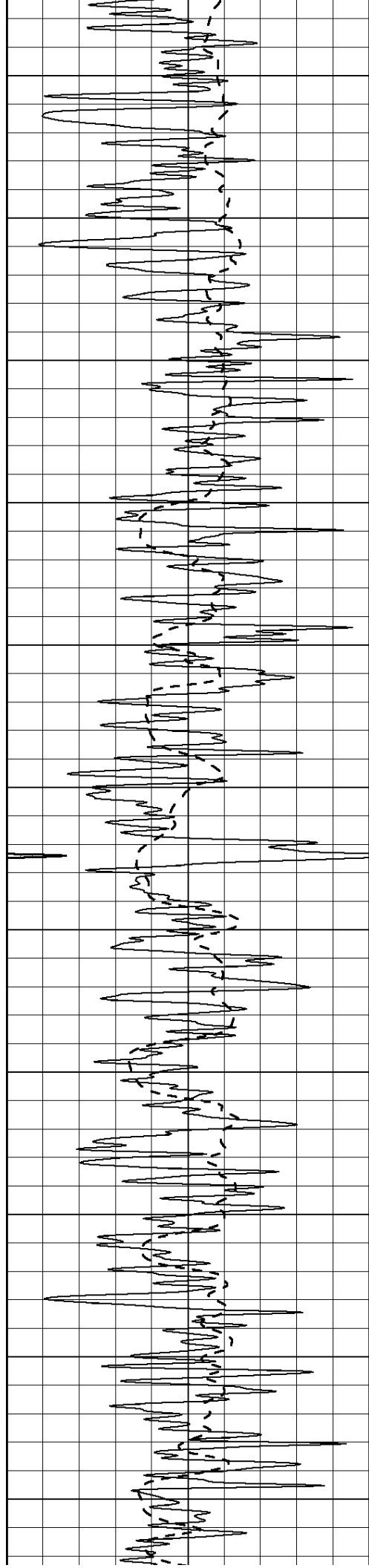




1600  
1650  
1700  
1750  
1800  
1850  
1900  
1950  
2000  
2050  
2100







2700

2750

2800

2850

2900

2950

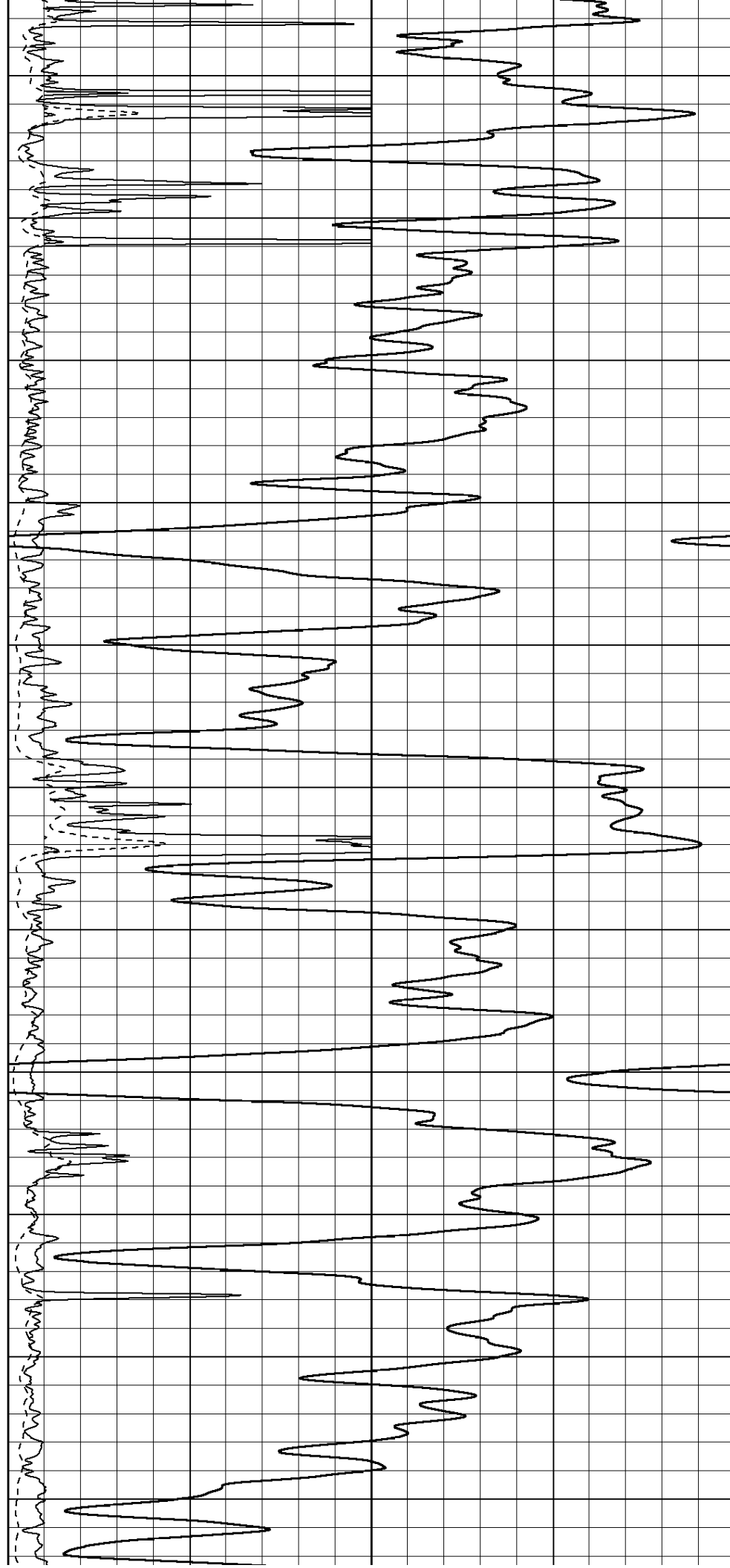
3000

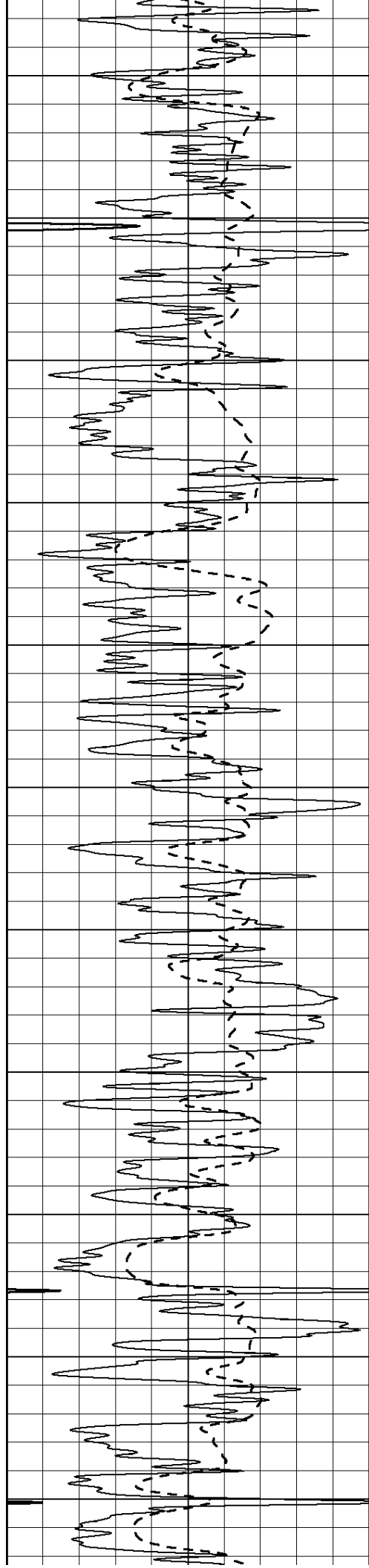
3050

3100

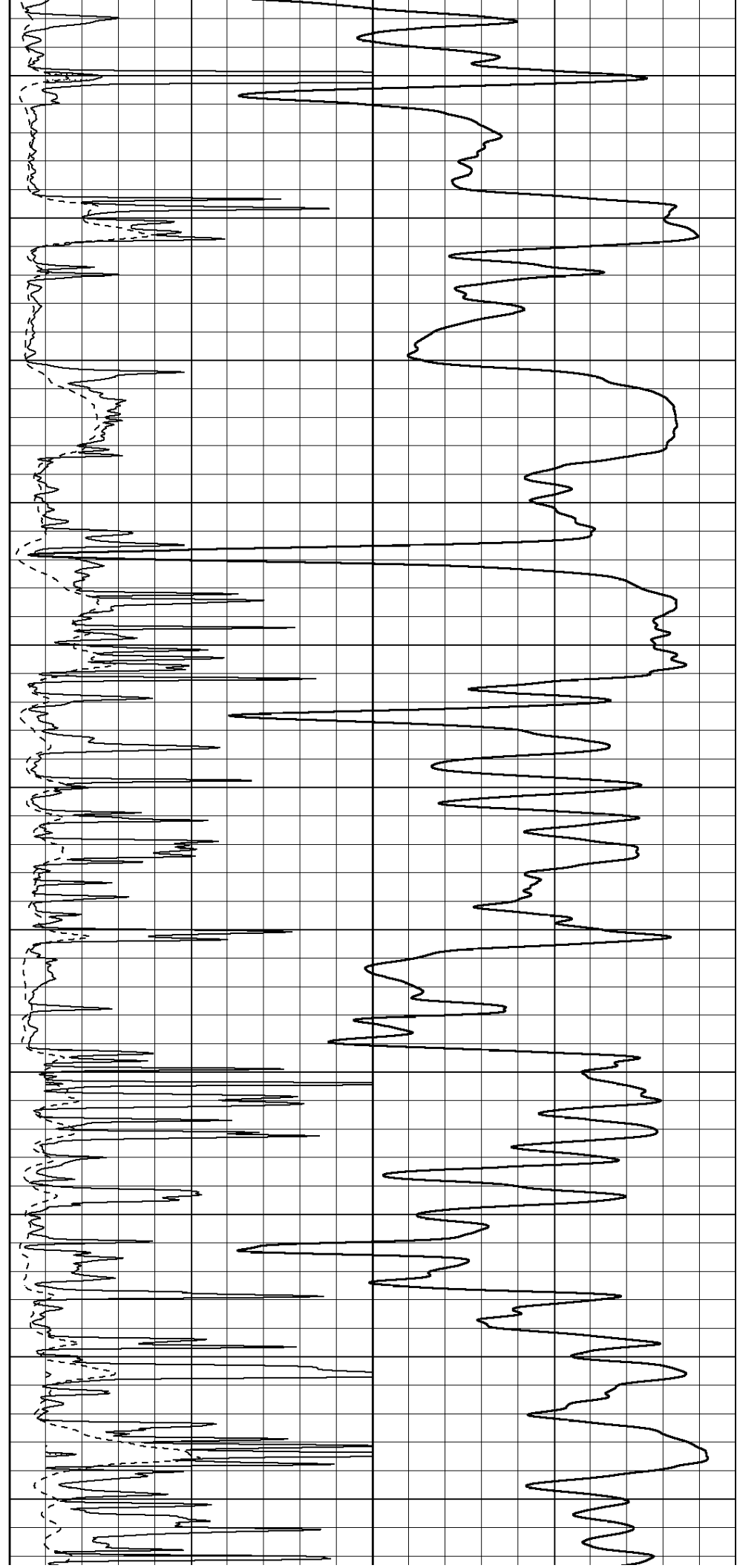
3150

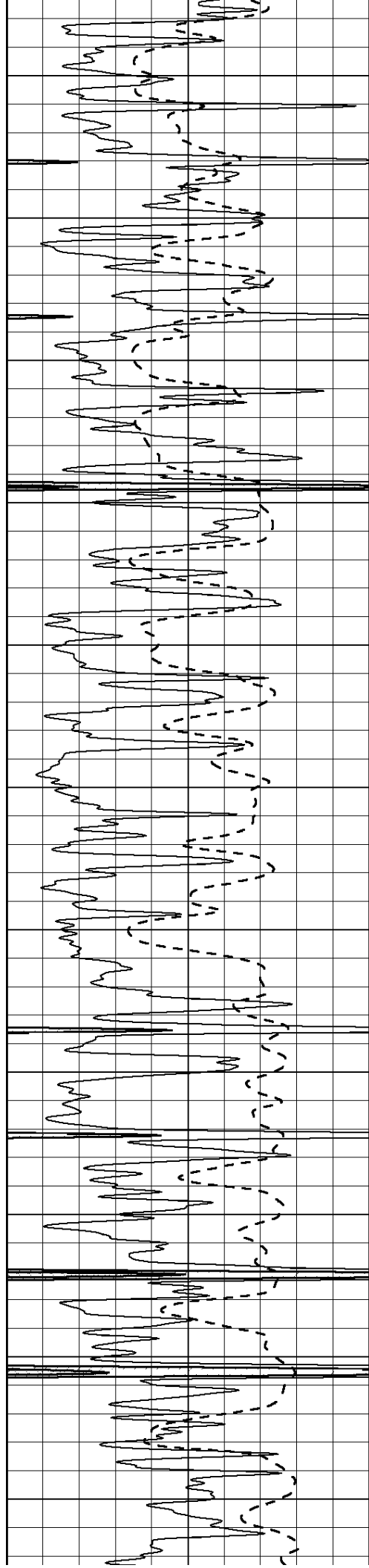
3200



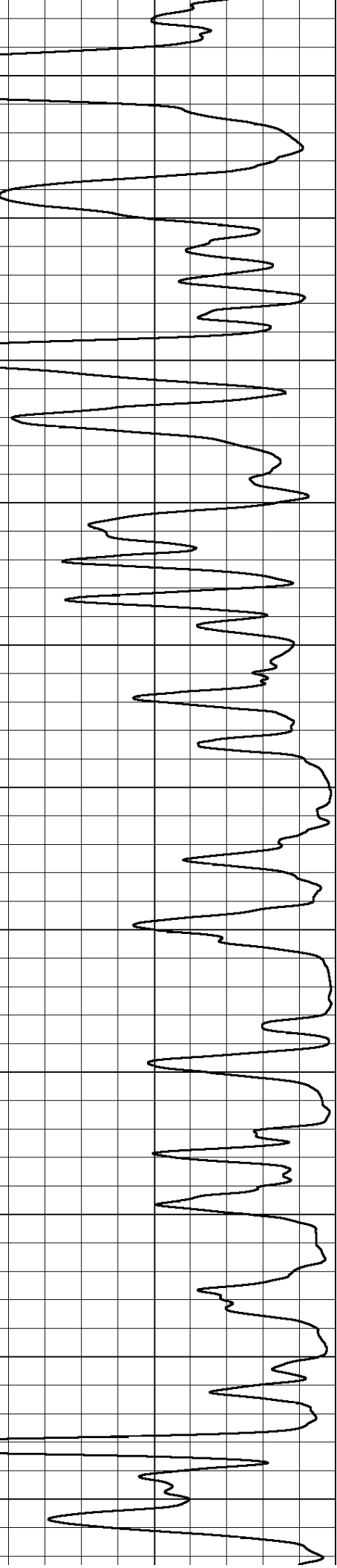
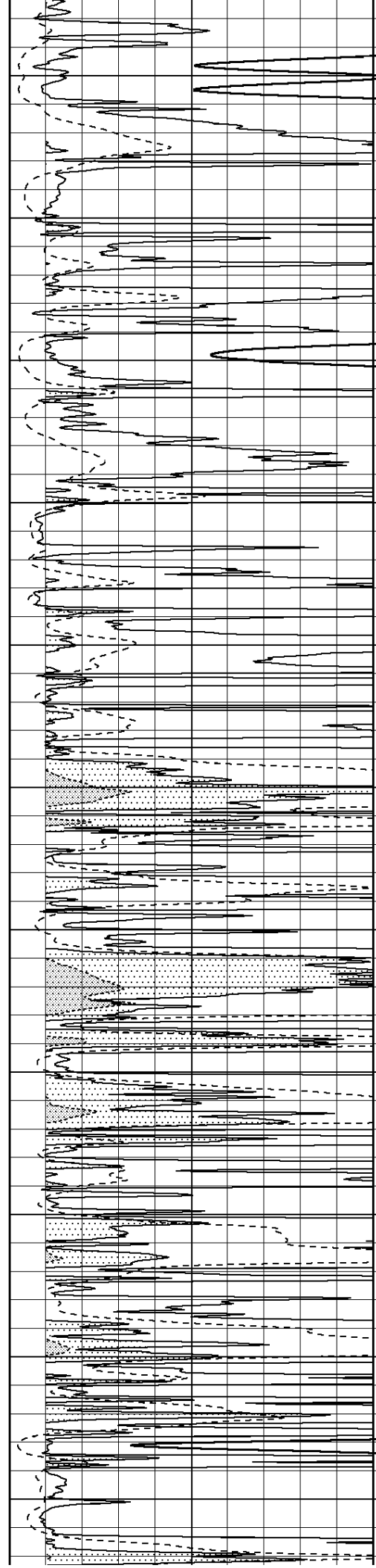


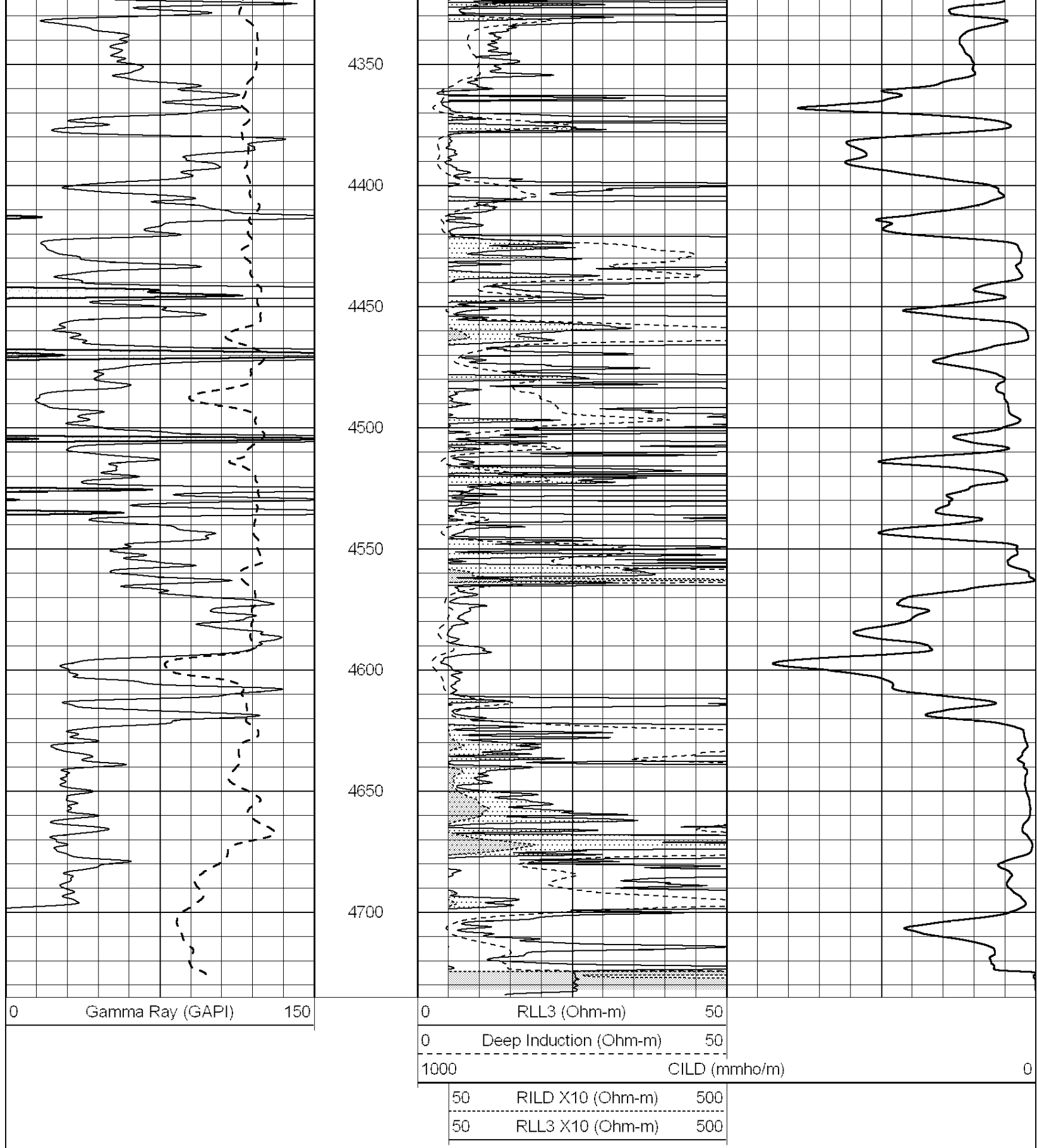
3250  
3300  
3350  
3400  
3450  
3500  
3550  
3600  
3650  
3700  
3750





3800  
3850  
3900  
3950  
4000  
4050  
4100  
4150  
4200  
4250  
4300



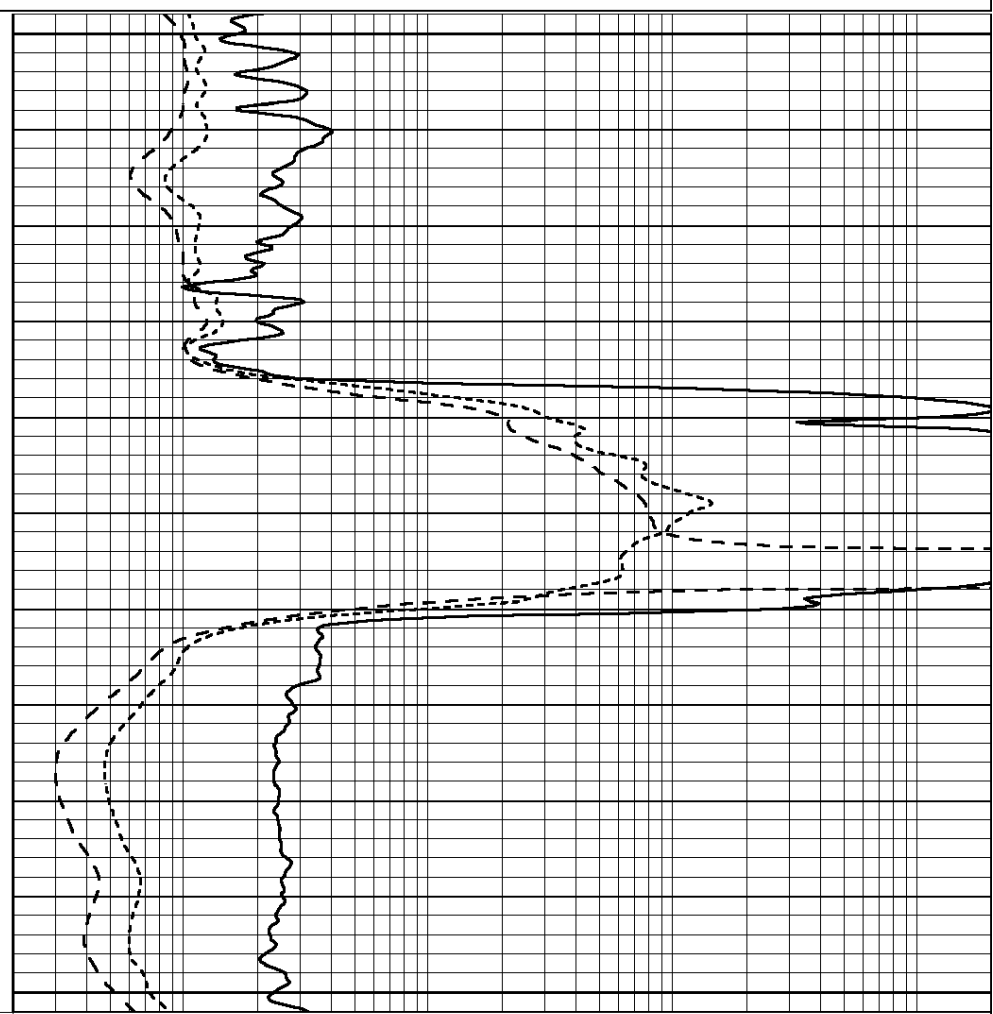
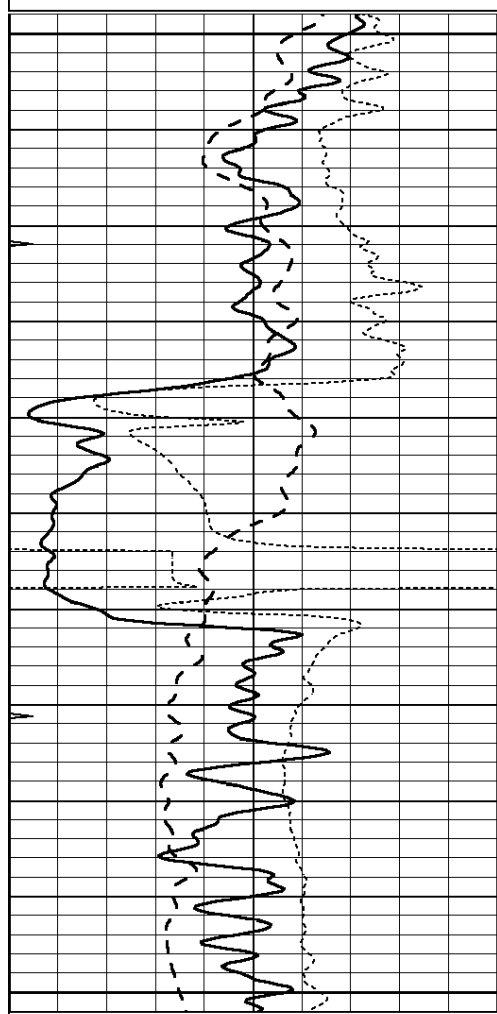


Database File: 010655ddn.db  
 Dataset Pathname: pass4.3  
 Presentation Format: dil  
 Dataset Creation: Sun Jan 20 20:39:58 2013 by Calc Open-Cased 090629  
 Charted by: Depth in Feet scaled 1:240



-100	SP (mV)	100
-250	RxoRt	50
0	MINMK	20

0.2	DEEP INDUCTION (Ohm-m)	2000
0.2	MEDIUM INDUCTION (Ohm-m)	2000



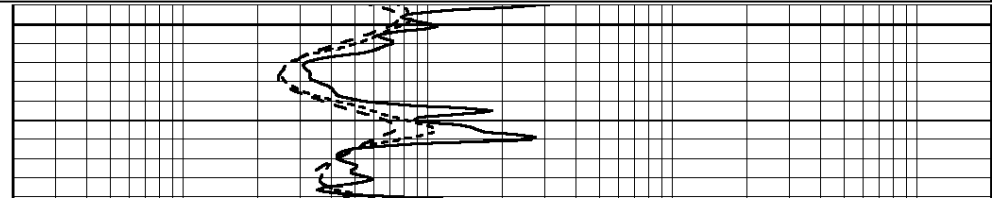
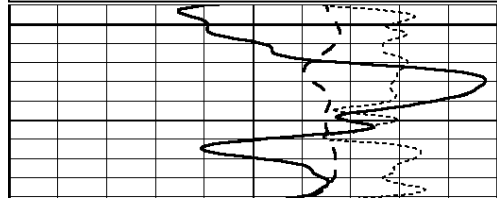
0	GAMMA RAY (GAPI)	150
-100	SP (mV)	100
-250	RxoRt	50
0	MINMK	20

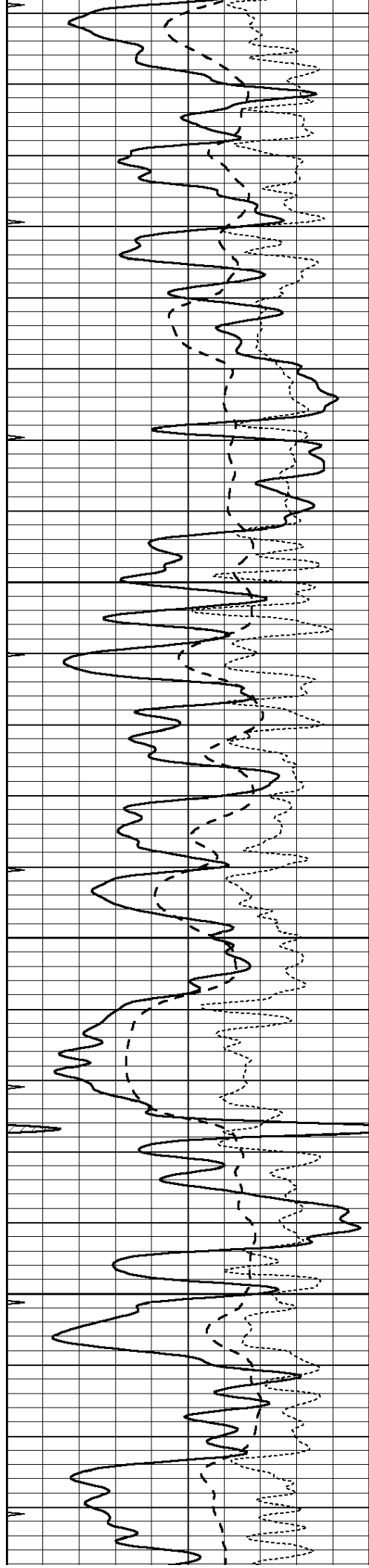
0.2	RLL3 (Ohm-m)	2000
0.2	DEEP INDUCTION (Ohm-m)	2000
0.2	MEDIUM INDUCTION (Ohm-m)	2000

Database File: 010655ddn.db  
 Dataset Pathname: pass4.2  
 Presentation Format: dil  
 Dataset Creation: Sun Jan 20 20:17:12 2013 by Calc Open-Cased 090629  
 Charted by: Depth in Feet scaled 1:240

0	GAMMA RAY (GAPI)	150
-100	SP (mV)	100
-250	RxoRt	50
0	MINMK	20

0.2	RLL3 (Ohm-m)	2000
0.2	DEEP INDUCTION (Ohm-m)	2000
0.2	MEDIUM INDUCTION (Ohm-m)	2000



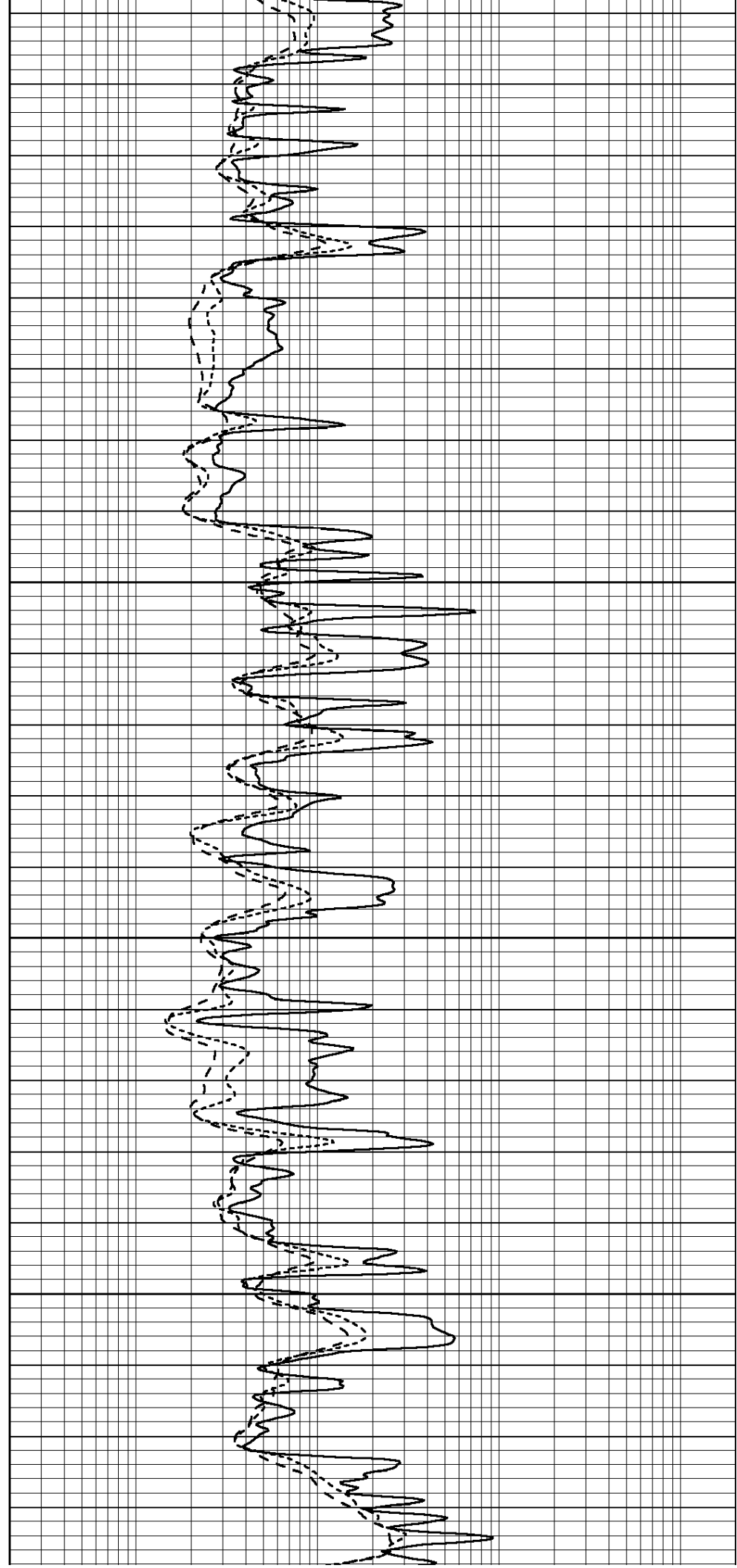


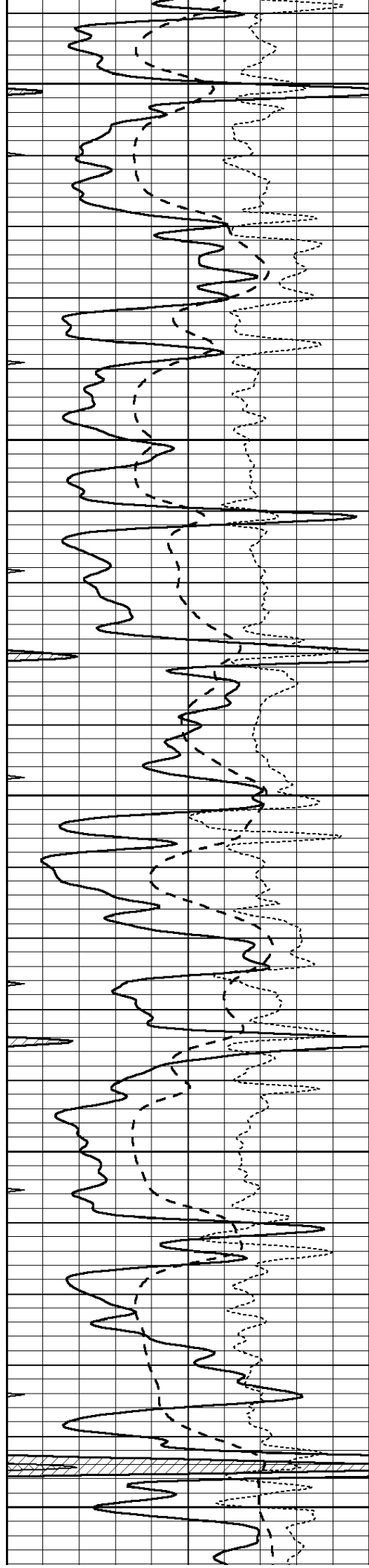
3550

3600

3650

3700





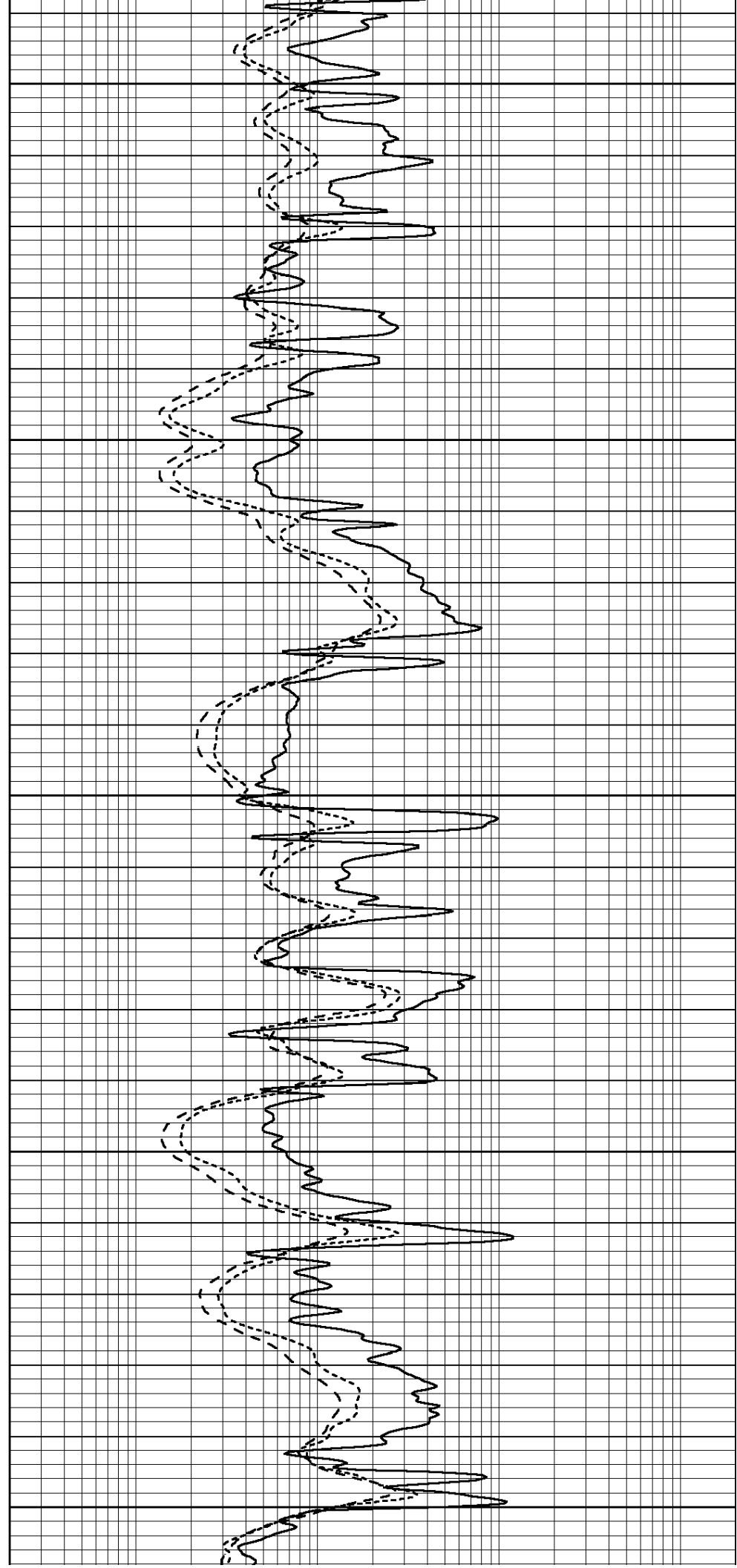
3750

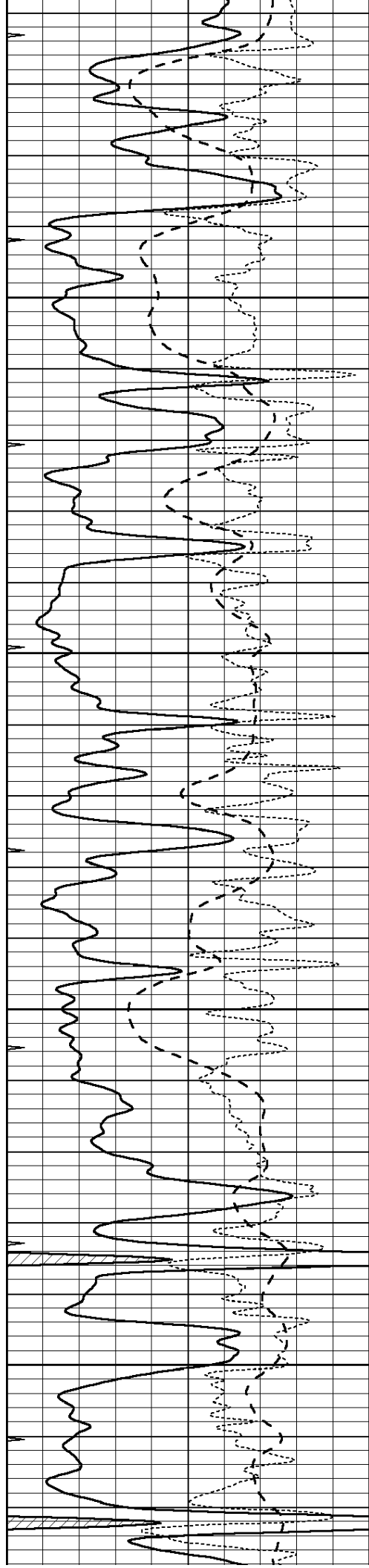
3800

3850

3900

3950



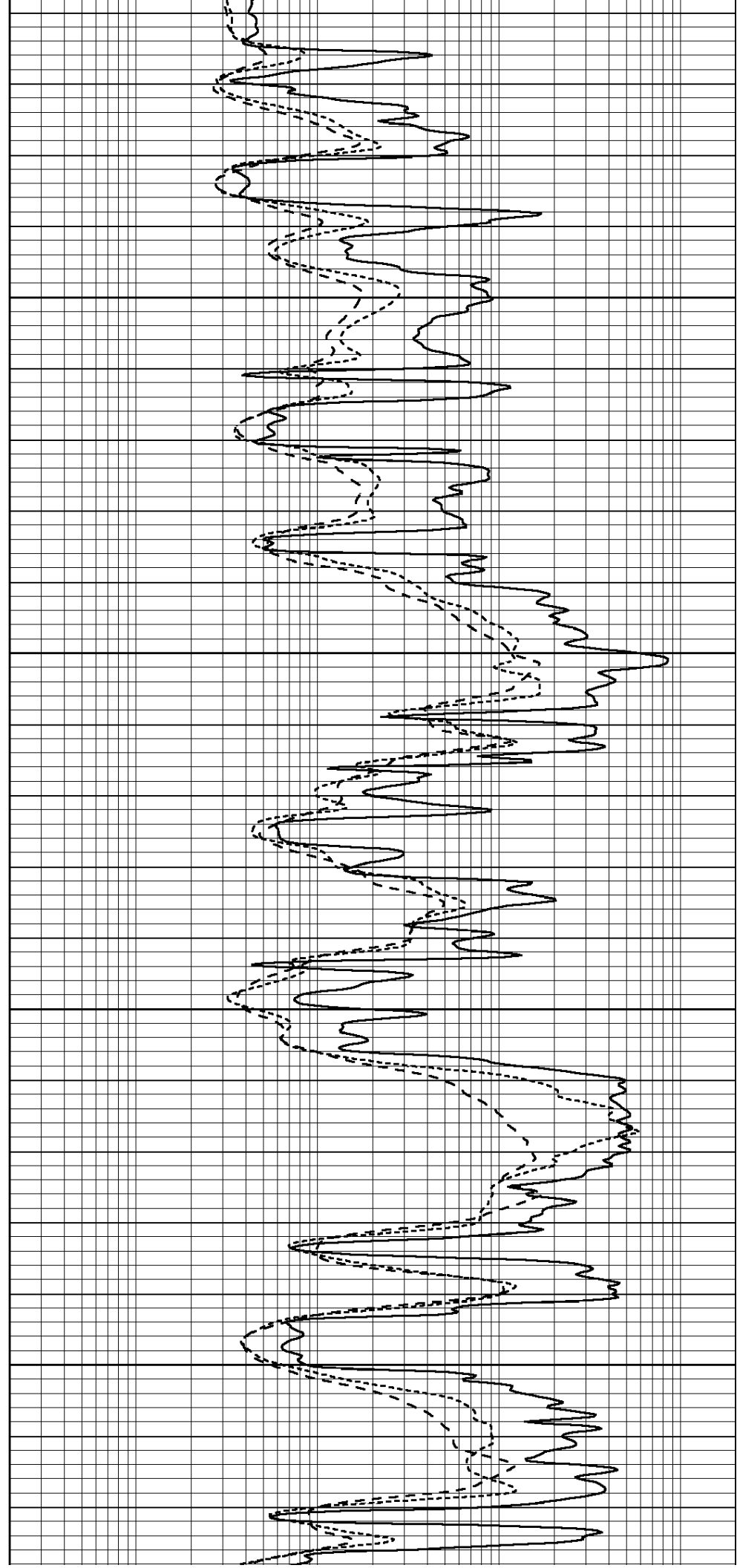


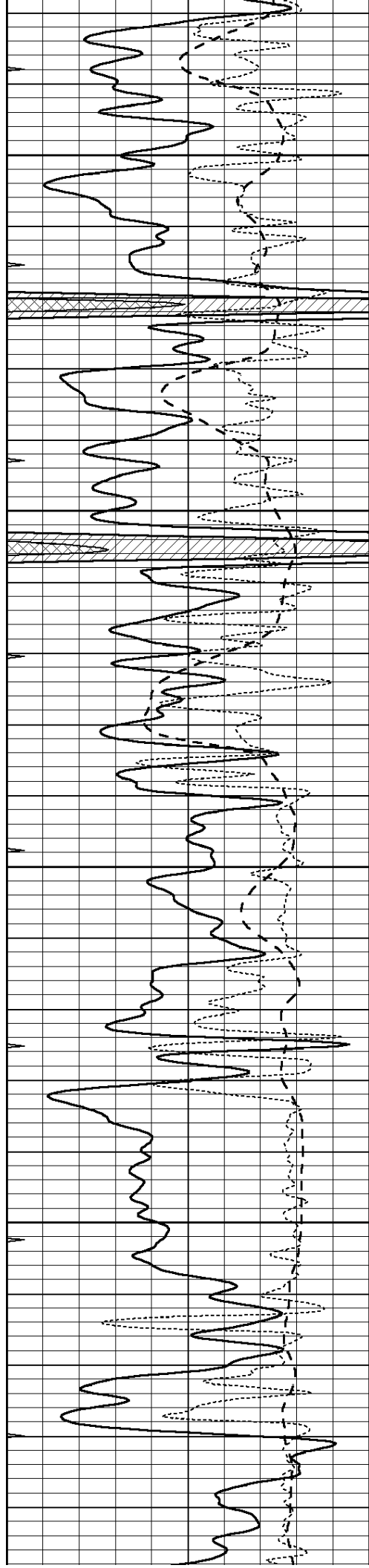
4000

4050

4100

4150



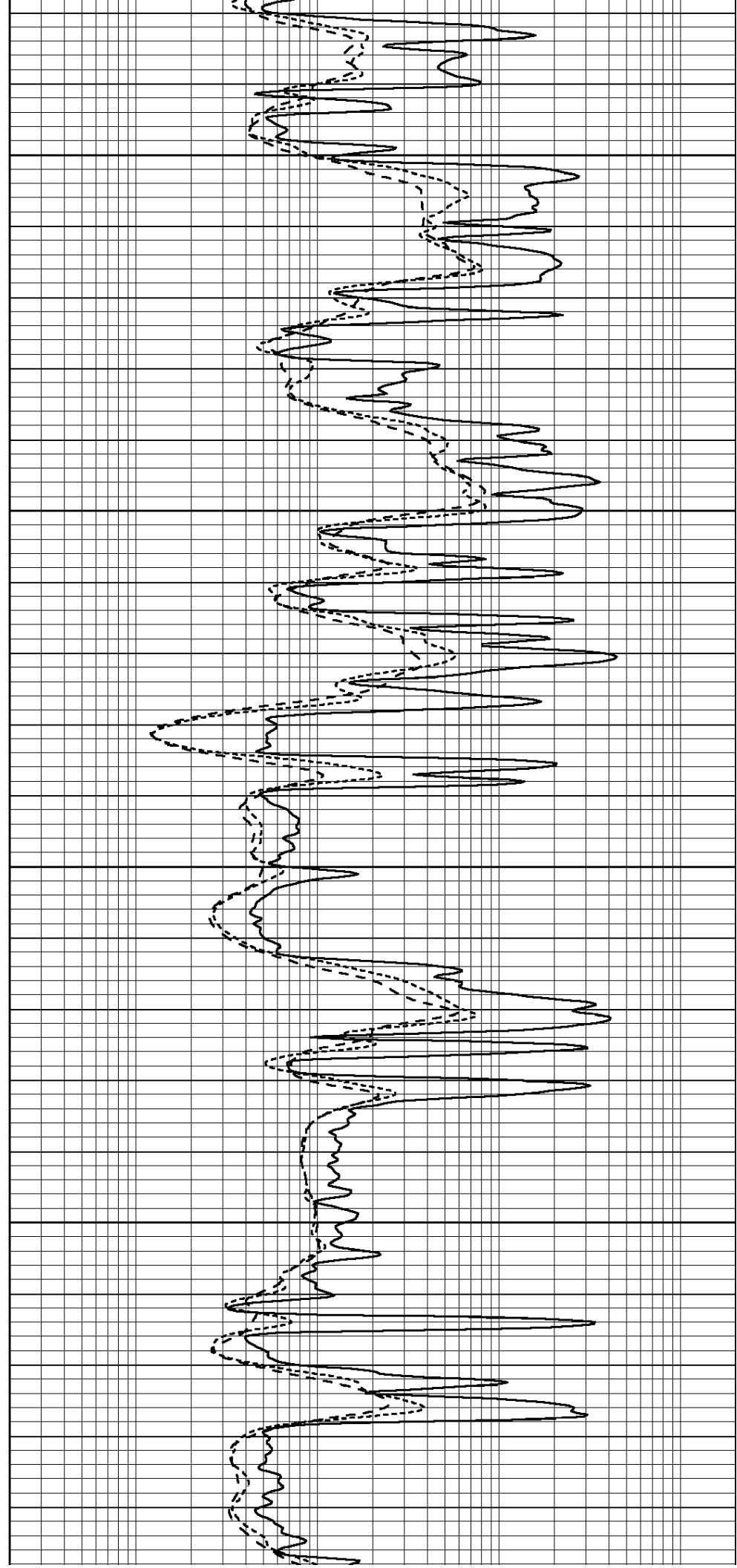


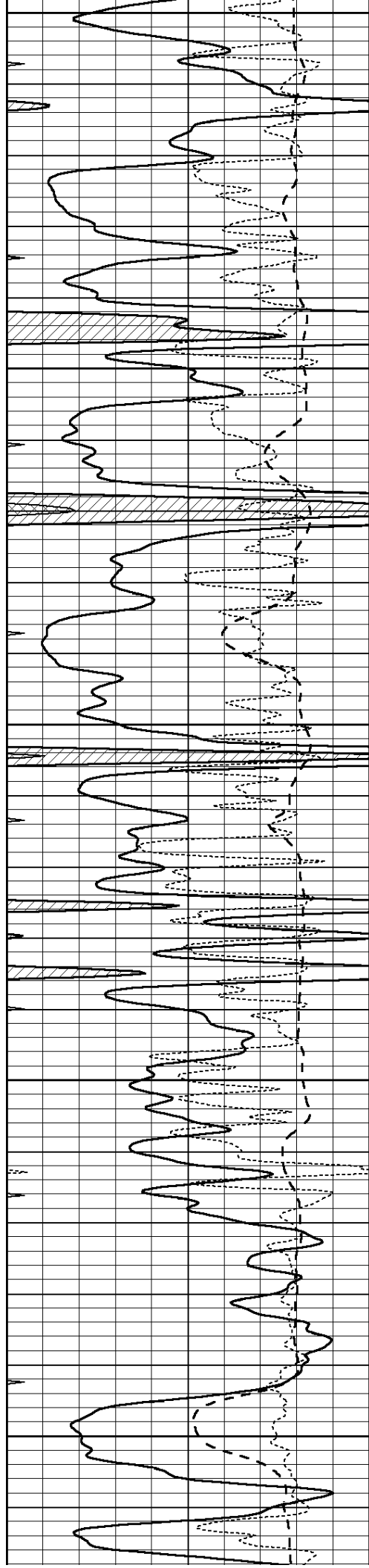
4200

4250

4300

4350





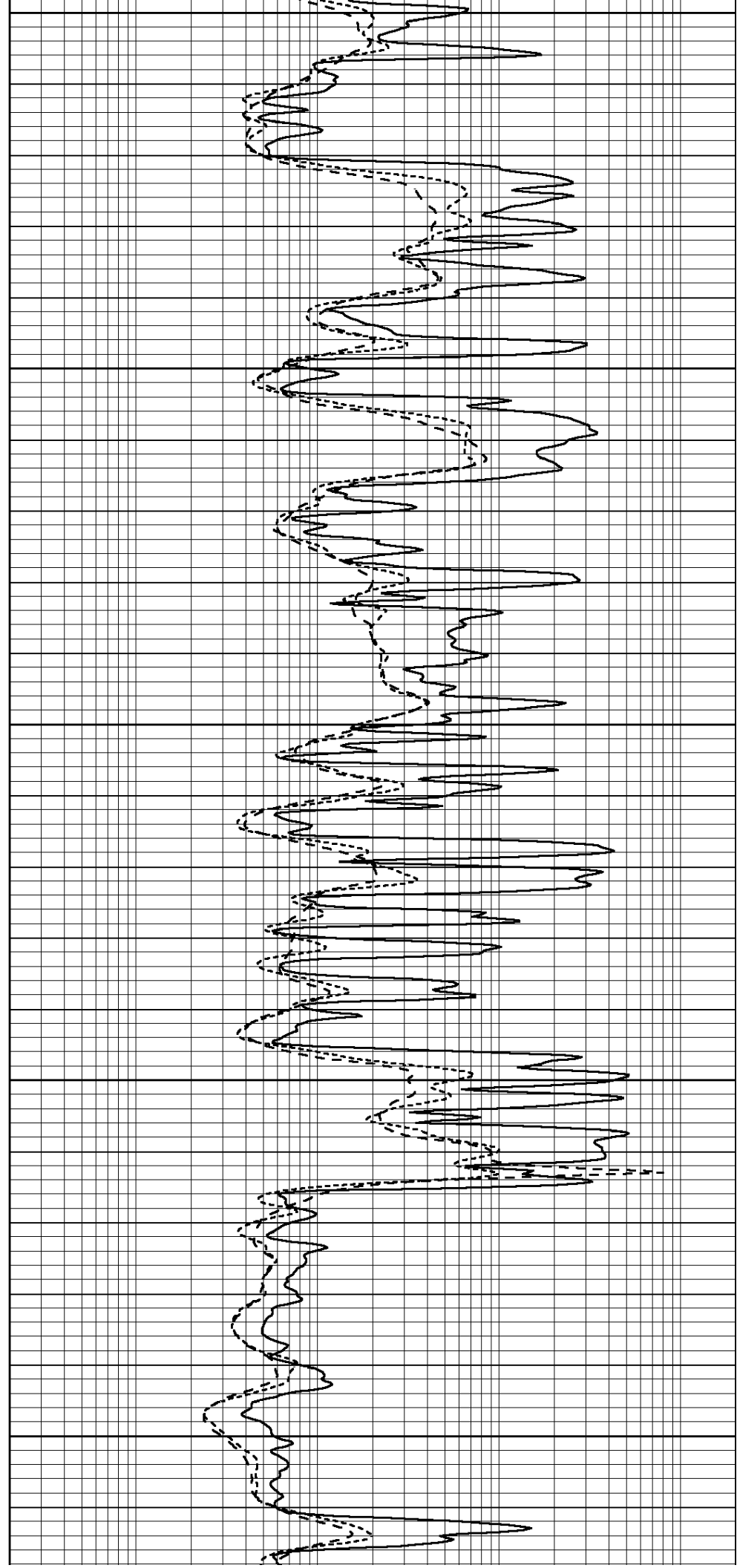
4400

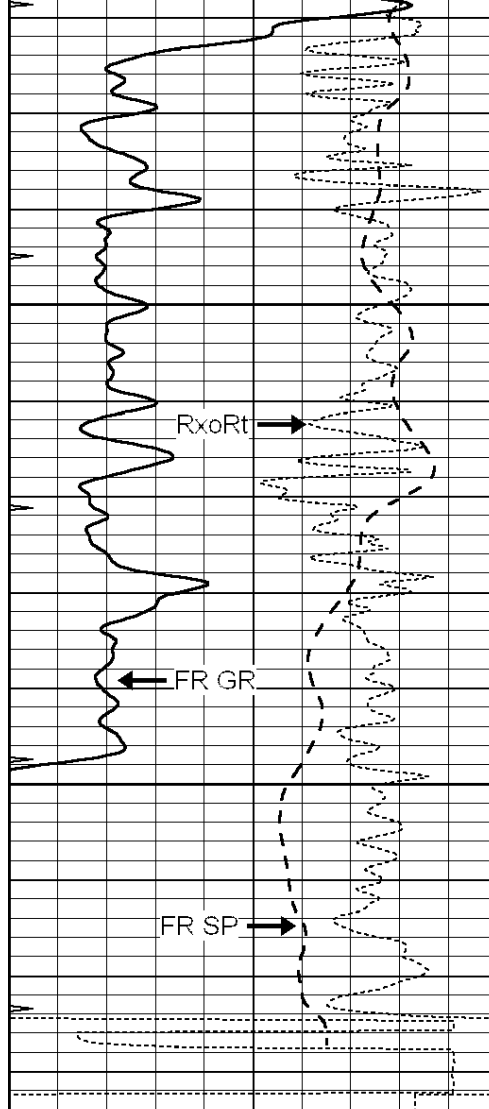
4450

4500

4550

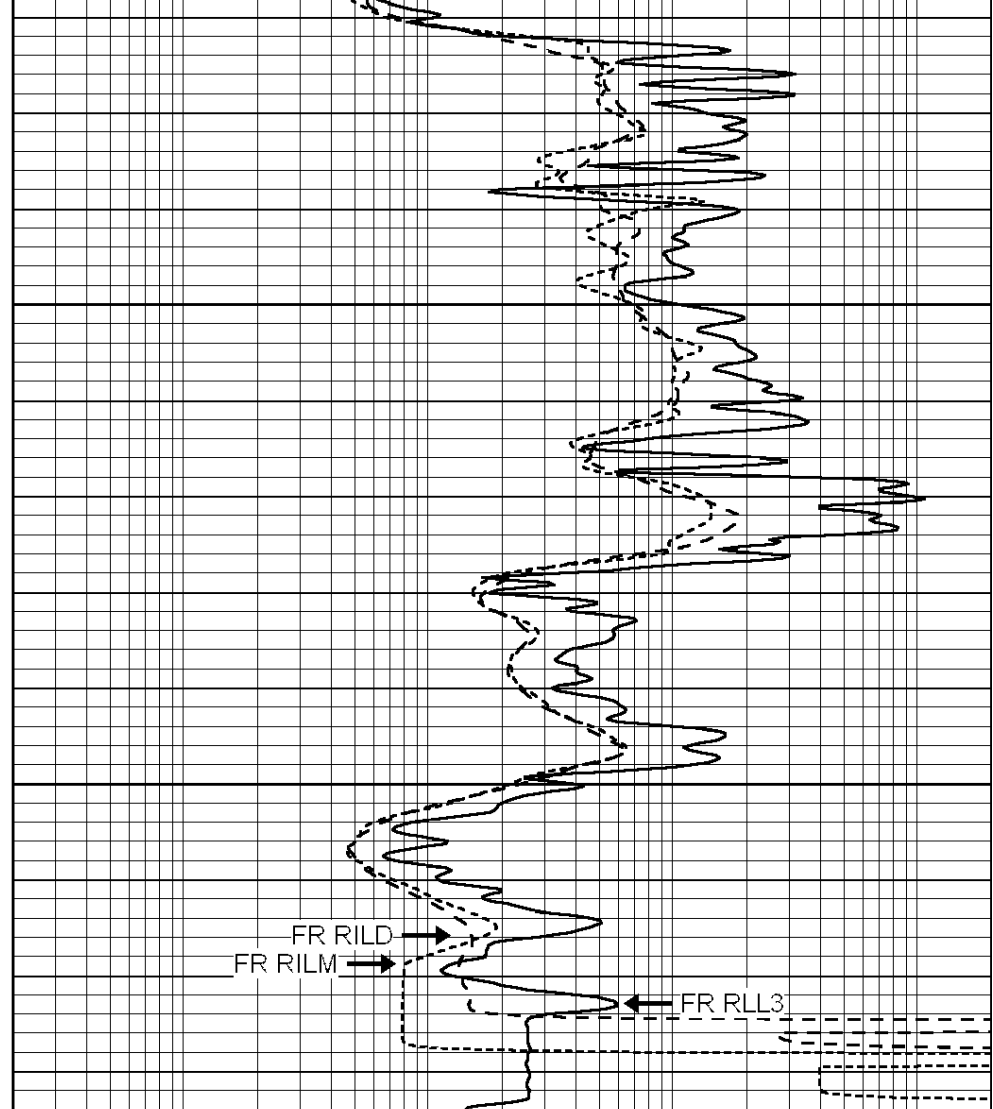
4600





4650  
4700  
LTD 4725

0	GAMMA RAY (GAPI)	150
-100	SP (mV)	100
-250	RxoRt	50
0	MINMK	20



0.2	RLL3 (Ohm-m)	2000
0.2	DEEP INDUCTION (Ohm-m)	2000
0.2	MEDIUM INDUCTION (Ohm-m)	2000

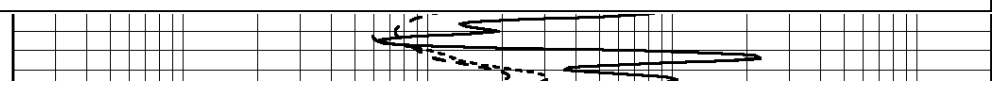


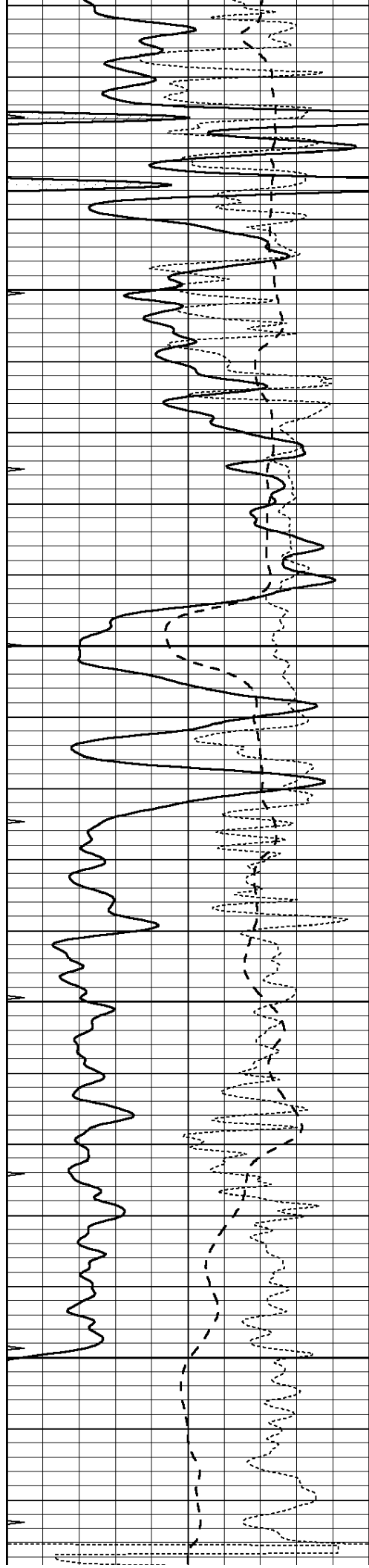
# REPEAT SECTION

Database File: 010655ddn.db  
 Dataset Pathname: pass3.2  
 Presentation Format: dil  
 Dataset Creation: Sun Jan 20 19:37:28 2013 by Calc Open-Cased 090629  
 Charted by: Depth in Feet scaled 1:240

0	GAMMA RAY (GAPI)	150
-100	SP (mV)	100
-250	RxoRt	50
0	MINMK	20

0.2	RLL3 (Ohm-m)	2000
0.2	DEEP INDUCTION (Ohm-m)	2000
0.2	MEDIUM INDUCTION (Ohm-m)	2000



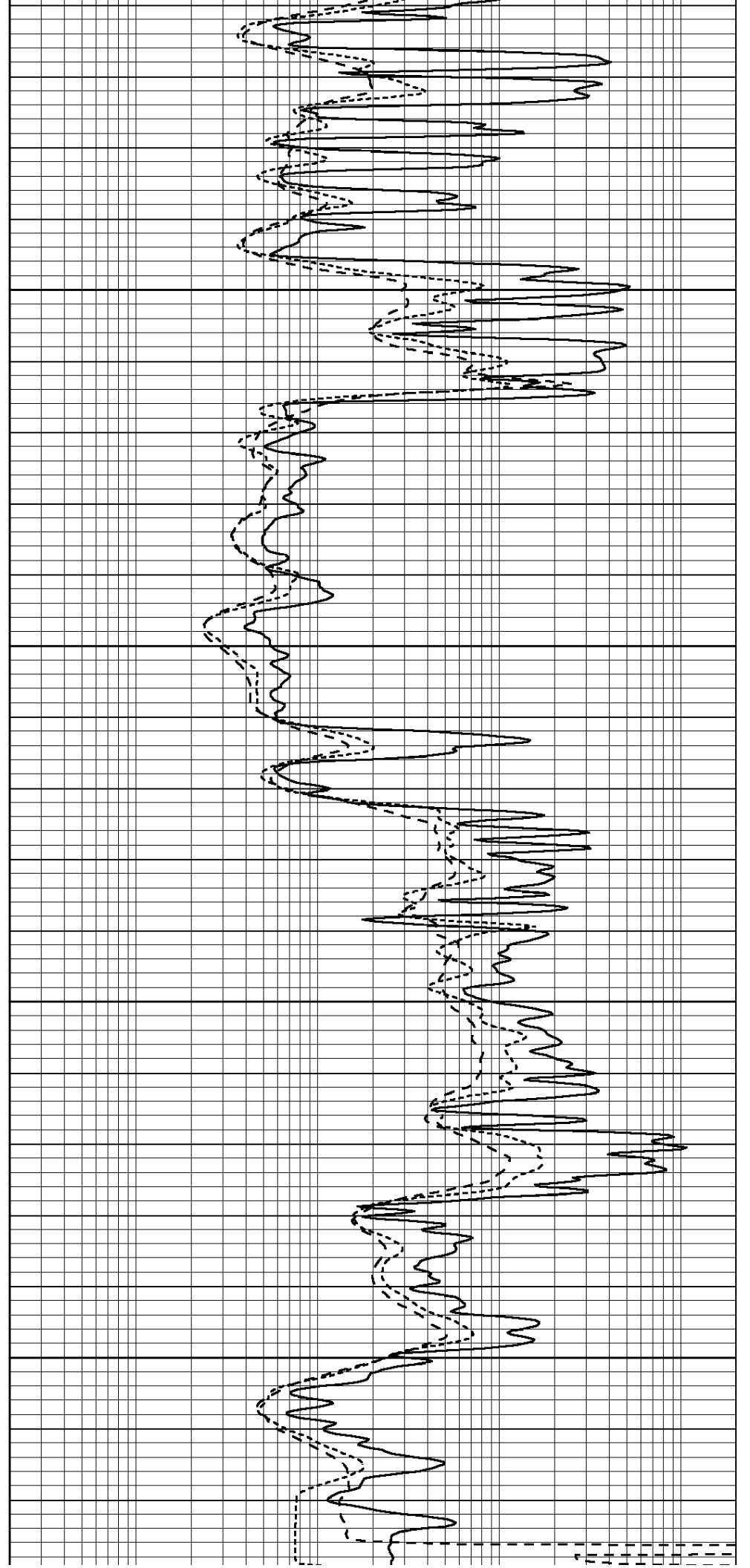


4550

4600

4650

4700



0	GAMMA RAY (GAPI)	150
-100	SP (mV)	100
-250	RxoRt	50
0	MINMK	20

0.2	RLL3 (Ohm-m)	2000
0.2	DEEP INDUCTION (Ohm-m)	2000
0.2	MEDIUM INDUCTION (Ohm-m)	2000

Calibration Report

Database File: 010655ddn.db  
 Dataset Pathname: pass4.3  
 Dataset Creation: Sun Jan 20 20:39:58 2013 by Calc Open-Cased 090629

Dual Induction Calibration Report

Serial-Model: PROBE7-DILG  
 Surface Cal Performed: Sat Jan 19 20:58:30 2013  
 Downhole Cal Performed: Sat Jan 19 19:51:38 2013  
 After Survey Verification Performed: Sat Jan 19 19:51:38 2013

Surface Calibration

Loop:	Readings			References			Results	
	Air	Loop		Air	Loop		m	b
Deep	0.793	0.790	V	0.000	400.000	mmho/m	670.000	-6.000
Medium	0.992	1.002	V	0.000	464.000	mmho/m	700.000	-55.000
Internal:	Zero	Cal		Zero	Cal		m	b
Deep	0.041	0.642	V	0.000	400.000	mmho/m	664.874	-27.011
Medium	0.035	0.802	V	0.000	464.000	mmho/m	604.936	-21.367

Downhole Calibration

	Readings			References			Results	
	Zero	Cal		Zero	Cal		m'	b'
Deep	135384.000	27094.500	mmho/m	135400.000	27082.400	mmho/m	1.000	-19.259
Medium	-47330.100	-9381.740	mmho/m	-47327.100	-9389.280	mmho/m	1.000	-10.154
LL3		7.322	V		1400.000	Ohm-m		
		0.038	V		20.000	Ohm-m		
		-7.273	V		4000.000	mmho-m		

After Survey Verification

	Readings			Targets			Results	
	Zero	Cal		Zero	Cal		m'	b'
Deep	0.000	0.000	mmho/m	135384.000	27094.500	mmho/m	1.000	0.000
Medium	0.000	0.000	mmho/m	-47330.100	-9381.740	mmho/m	1.000	0.000
LL3		0.000	Ohm-m		1400.000	Ohm-m		
		0.000	Ohm-m		20.000	Ohm-m		
		0.000	mmho-m		4000.000	mmho-m		

Compensated Density Calibration Report

Serial-Model: GEAR1-GEARHART  
 Source / Verifier: 147 / 147  
 Master Calibration Performed: Sat Jan 19 20:58:11 2013

Master Calibration

Density	Far Detector	Near Detector
---------	--------------	---------------

Magnesium	1.710	g/cc	1205.77	610.74	cps
Aluminum	2.590	g/cc	271.21	419.72	cps

Spine Angle = 75.89

Density/Spine Ratio = 0.572

	Size		Reading	
Small Ring	7.70	in	4.69	V
Large Ring	14.00	in	6.52	V

Compensated Neutron Calibration Report

Serial Number: NUE\_2I  
 Tool Model: G

CALIBRATION

Detector	Readings	Target	Normalization
Short Space	1.00 cps	1.00 cps	1.0000
Long Space	1.00 cps	1.00 cps	1.0000

Gamma Ray Calibration Report

Serial Number: GR5  
 Tool Model: OPEN  
 Performed: Sat Jan 19 20:57:48 2013

Calibrator Value: 1.0 GAPI

Background Reading: 0.0 cps  
 Calibrator Reading: 1.0 cps

Sensitivity: 2.0000 GAPI/cps