



Pioneer Energy Services

Dual Compensated Porosity Log

15-051-26,441-00-00

API No.

Company **Murfin Drilling Company, Inc.**
 Well **Braun #1-36**
 Field **Wildcat**
 County **Elilis** State **Kansas**

Location **W/2 SW SE SW
 330' FSL 1500' FWL**
 Sec: **36** Twp: **15S** Rge: **19W**

Other Services
 DIL
 MEL/BHCS

Elevation
 K.B. 1991
 D.F.
 G.L. 1980

Date	1/13/2013
Run Number	One
Type Log	CNL / CDL
Depth Driller	3660
Depth Logger	3658
Bottom Logged Interval	3637
Top Logged Interval	2850
Type Fluid In Hole	Chemical
Salinity, PPM CL	10,000
Density Level	9.5
Level	Full
Max. Rec. Temp. F	113
Operating Rig Time	5 Hours
Equipment -- Location	15 Hays
Recorded By	D Kerr
Witnessed By	Robert Hendrix

Borehole Record				Casing Record			
Run No.	Bit	From	To	Size	Wgt.	From	To
1	12.25	00	1192	8.625	24#	00	1192
2	7.875	1192	3660				

<<< Fold Here >>>

All interpretations are opinions based on inferences from electrical or other measurements and we cannot and do not guarantee the accuracy or correctness of any interpretation, and we shall not, except in the case of gross or willful negligence on our part, be liable or responsible for any loss, costs, damages, or expenses incurred or sustained by anyone resulting from any interpretation made by any of our officers, agents or employees. These interpretations are also subject to our general terms and conditions set out in our current Price Schedule.

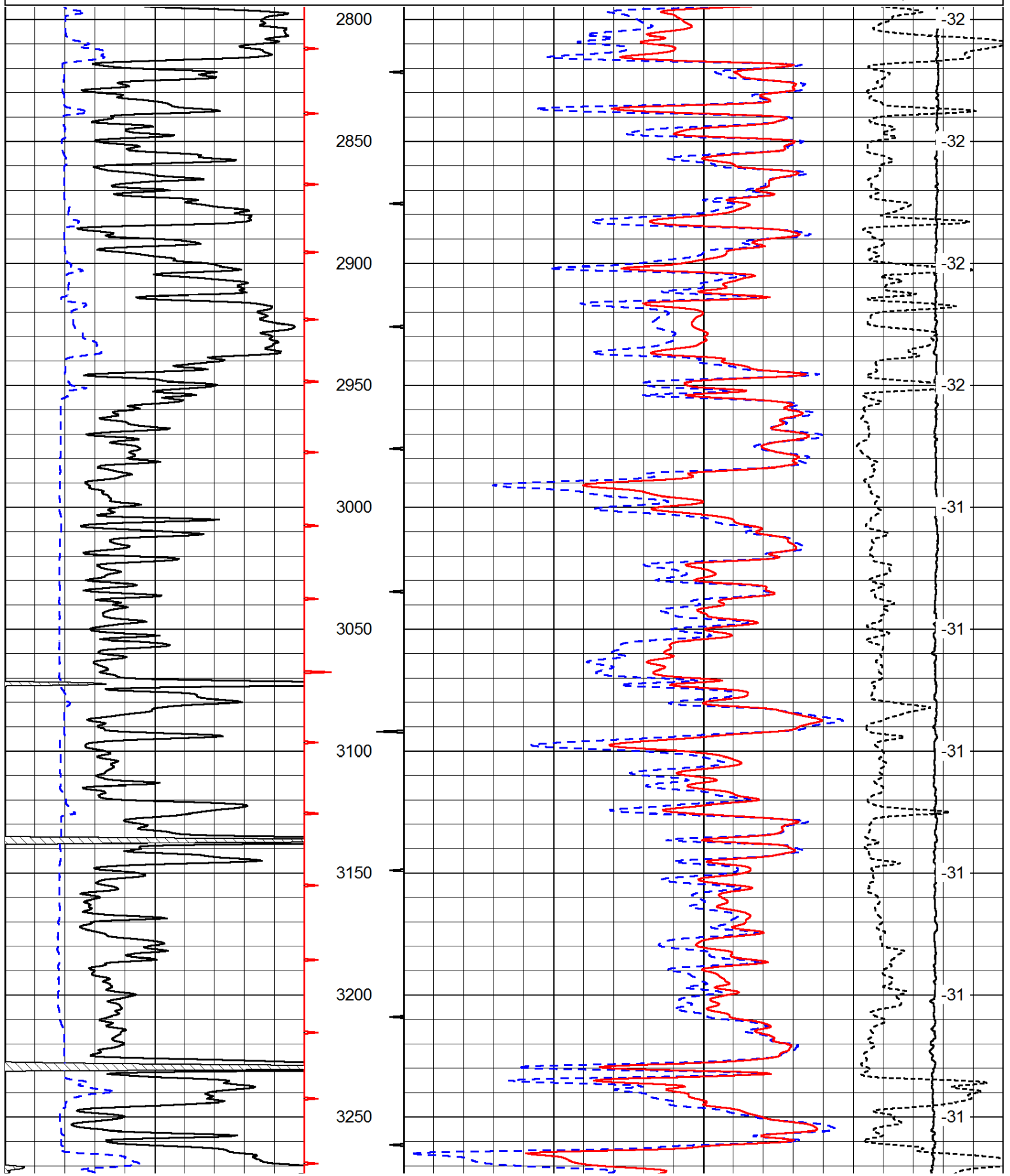
Comments

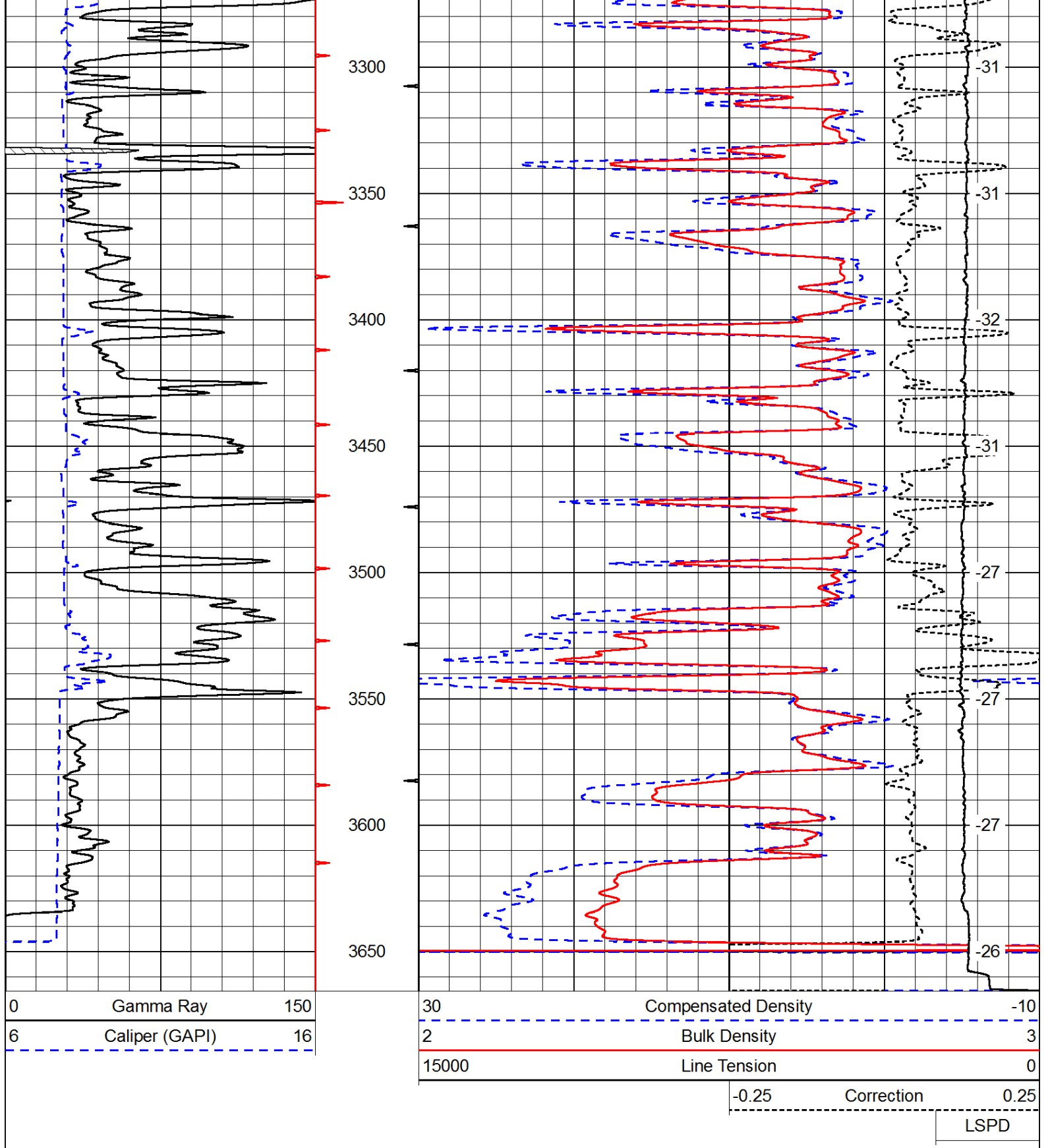
Thank you for using Pioneer Energy Services
 www.pioneerenergy.com
 785 625 3858

Schoenchen KS, 3 West to 210 RD,
 1 South to County Line, East Into

0	Gamma Ray	150
6	Caliper (GAPI)	16

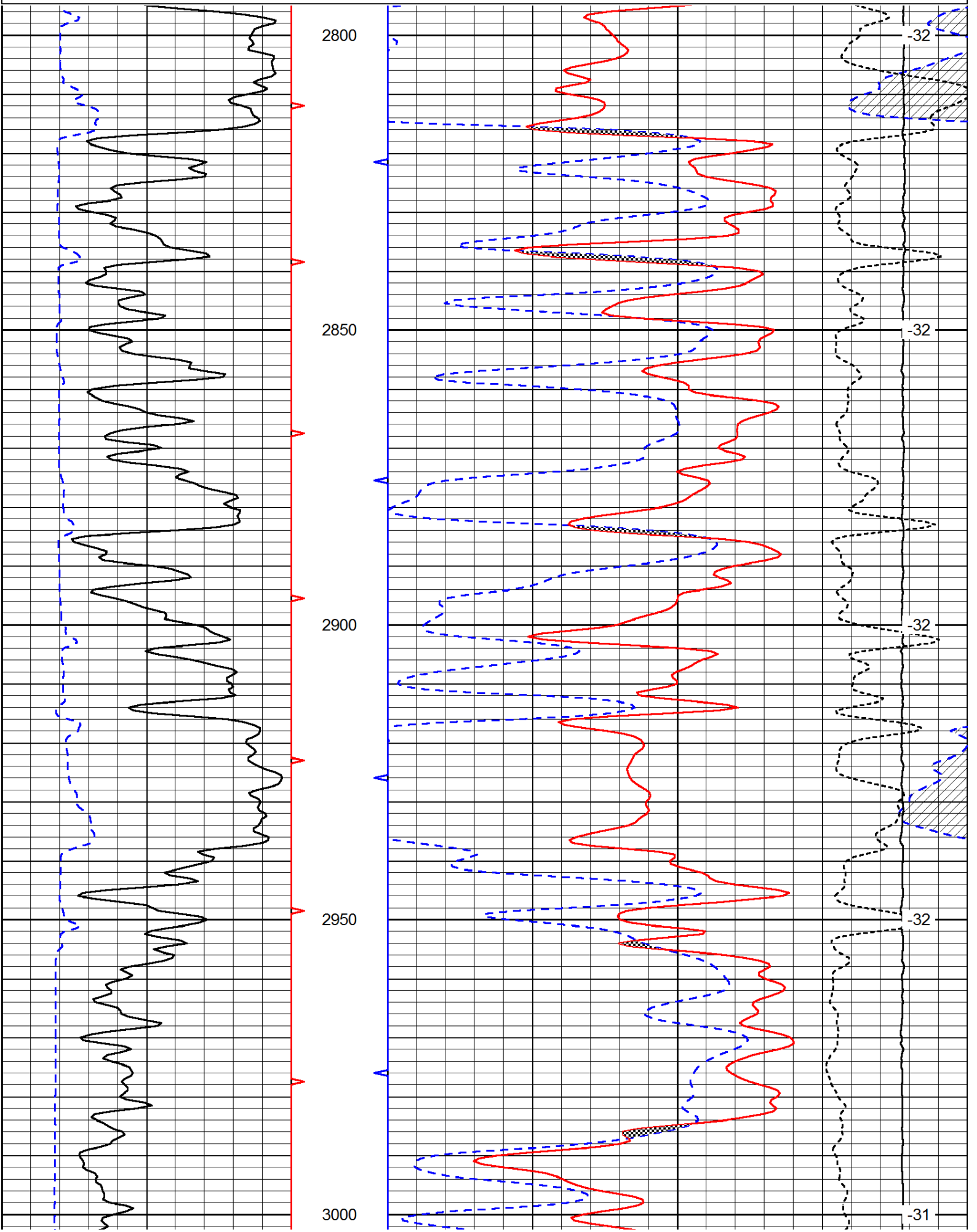
30	Compensated Density	-10
2	Bulk Density	3
15000	Line Tension	0
-0.25	Correction	0.25
LSPD		

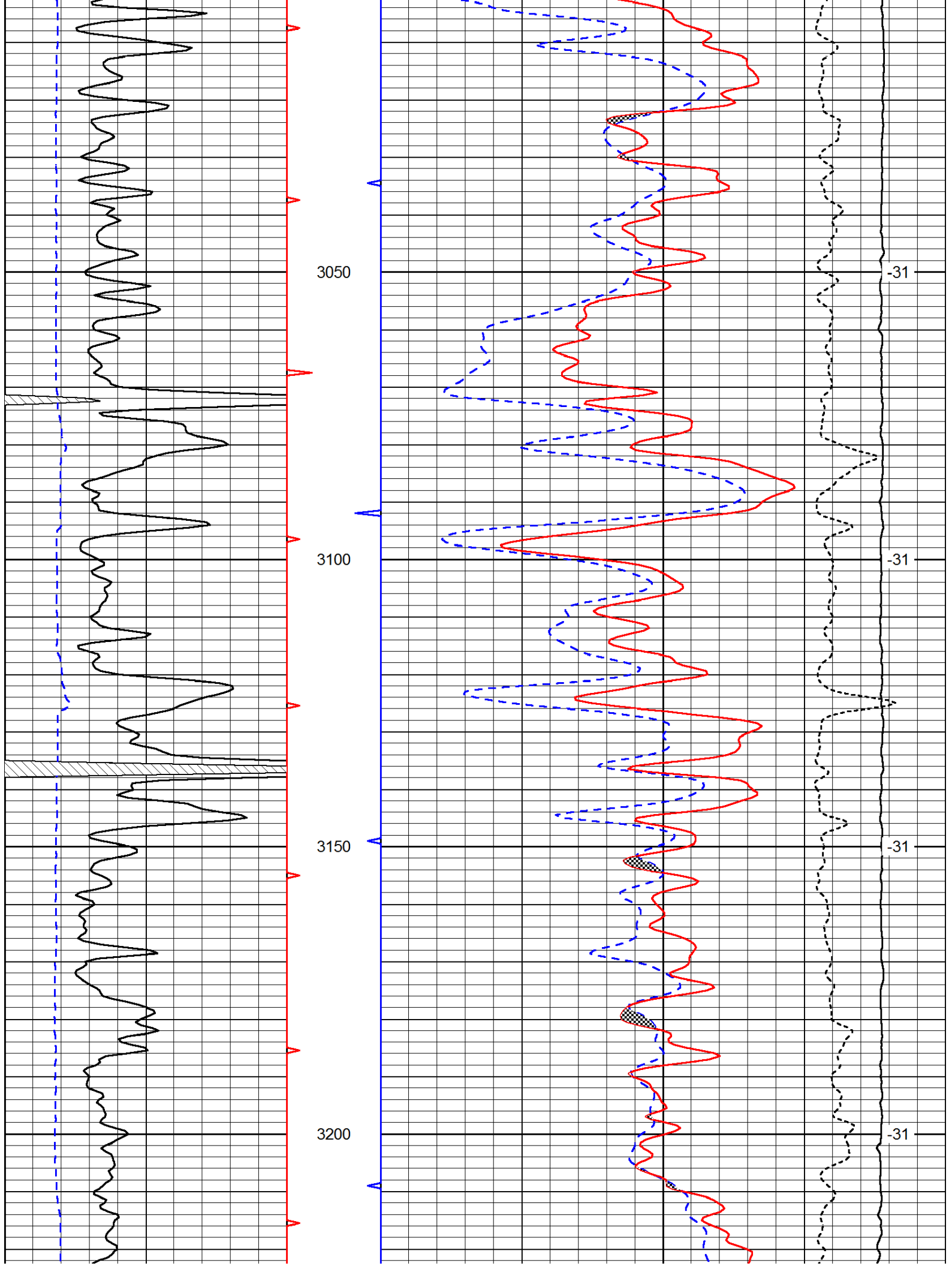


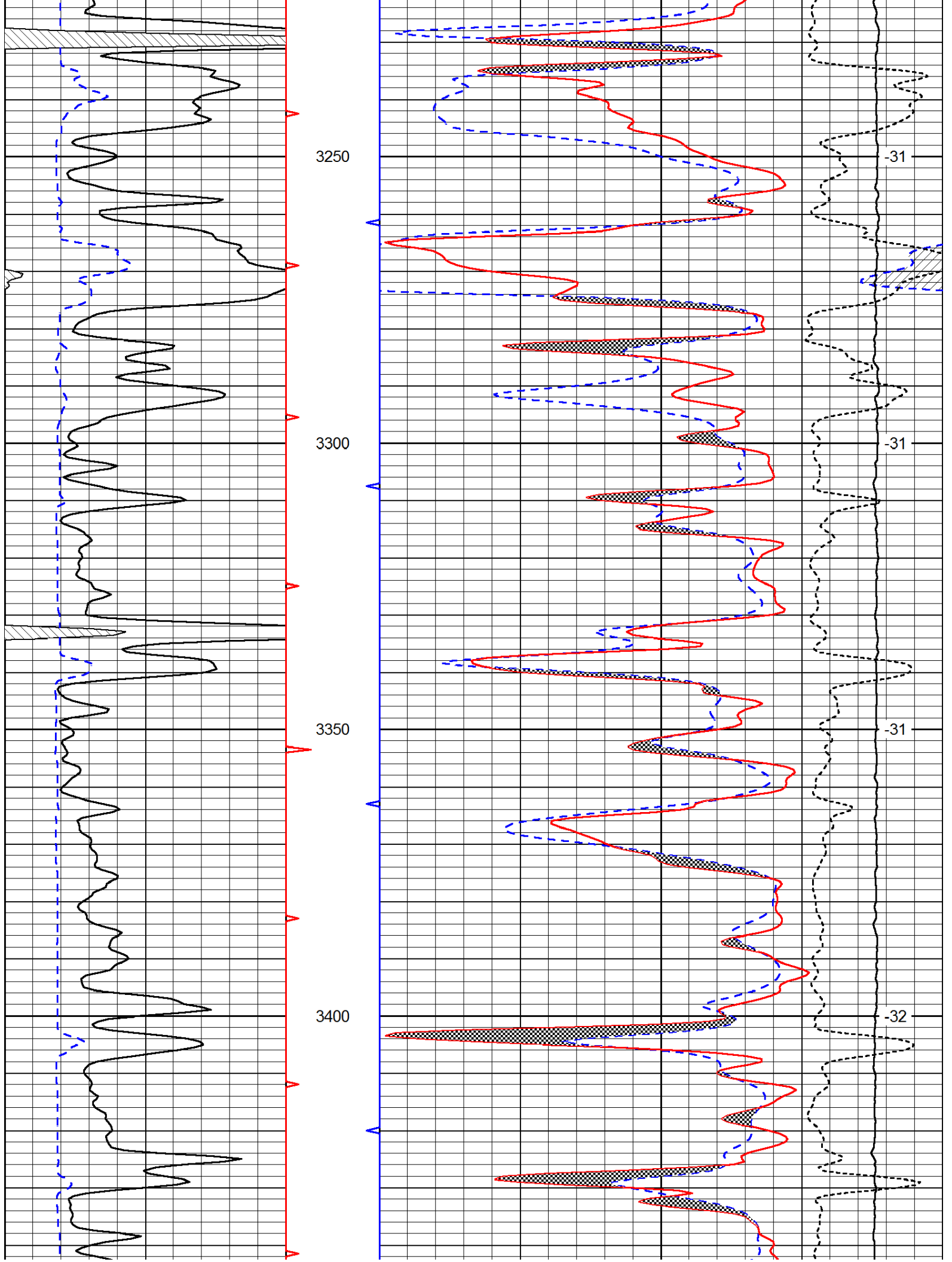


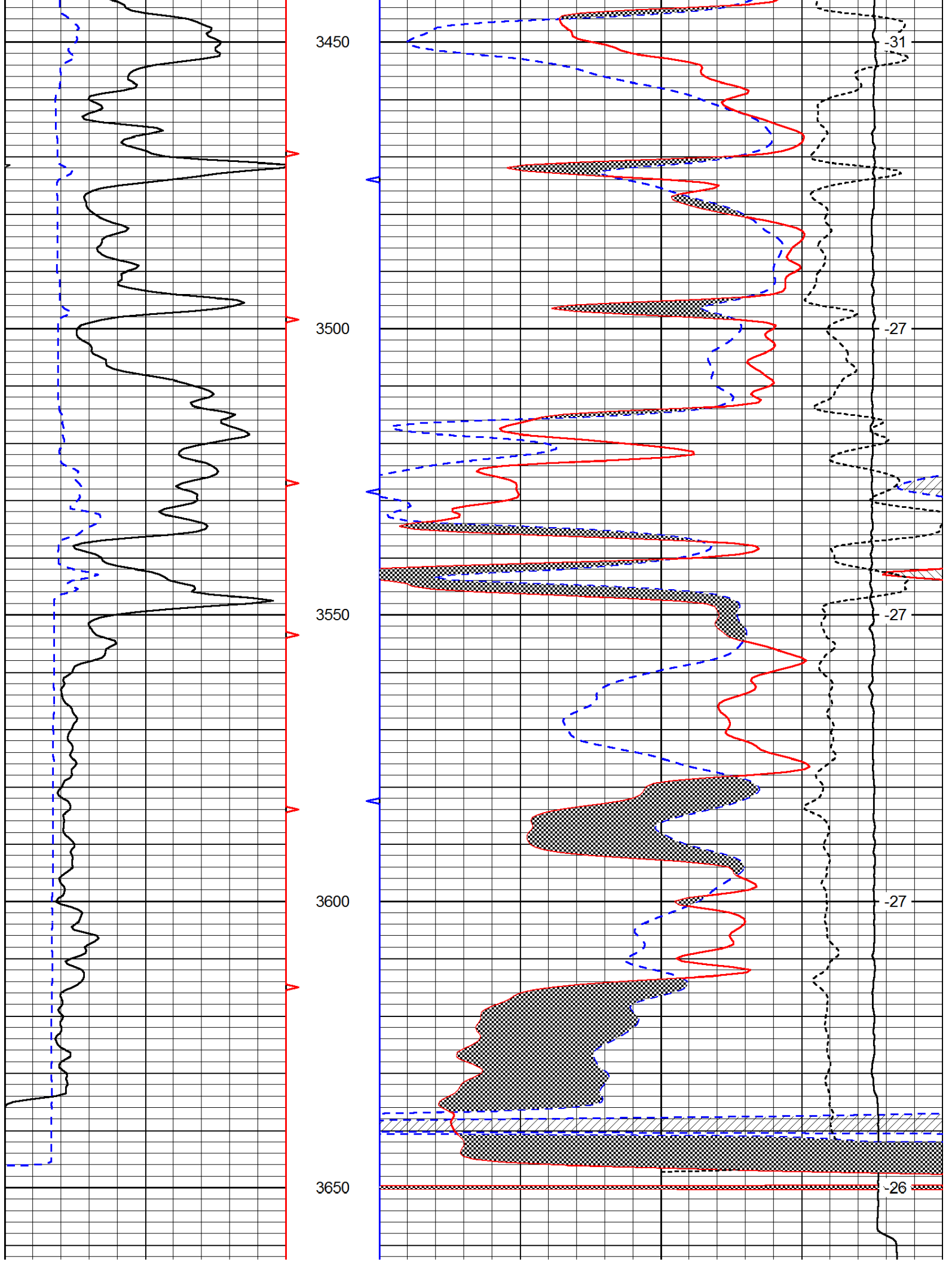
Database File: c:\warrior\data\murfin_braun #1-36\murfin_braun_1_36hd.db
 Dataset Pathname: DIL/murfstk
 Presentation Format: cndlspec
 Dataset Creation: Sun Jan 13 03:15:05 2013
 Charted by: Depth in Feet scaled 1:240

0	Gamma Ray	150	30	Compensated Neutron (Limestone)	-10
6	Caliper (GAPI)	16	30	Compensated Density (Limestone)	-10
			15000	Line Tension	0









0	Gamma Ray	150	30	Compensated Neutron (Limestone)	-10
6	Caliper (GAPI)	16	30	Compensated Density (Limestone)	-10
			15000	Line Tension	0
				-0.25 Correction	0.25
					LSPD