



Pioneer Energy Services

Microresistivity Log

15-051-26,441-00-00

API No.

Company **Murfin Drilling Company, Inc.**

Well **Braun #1-36**

Field **Wildcat**

County **Eljis** State **Kansas**

Location **W/2 SW SE SW
330' FSL 1500' FWL**

Sec: **36** Twp: **15S** Rge: **19W**

Permanent Datum **Ground Level** Elevation **1980**

Log Measured From **Kelly Bushing** 11 Ft. Above Perm. Datum

Drilling Measured From **Kelly Bushing**

Other Services
CNL/CDL
DIL/BHCS

Elevation
K.B. 1991
D.F.
G.L. 1980

Date **1/13/2013**

Run Number **Two**

Depth Driller **3660**

Depth Logger **3658**

Bottom Logged Interval **3657**

Top Log Interval **2800**

Casing Driller **8.625 @ 1192**

Casing Logger **1190**

Bit Size **7.875**

Type Fluid in Hole **Chemical**

Salinity, ppm CL **10,000**

Density / Viscosity **9.5 79**

pH / Fluid Loss **10.0 10.0**

Source of Sample **Flowline**

Rm @ Meas. Temp **.60 @ 50**

Rmf @ Meas. Temp **.45 @ 50**

Rmc @ Meas. Temp **.81 @ 50**

Source of Rmf / Rmc **Charts**

Rm @ BHT **.27 @ 113**

Operating Rig Time **5 Hours**

Max Rec. Temp. F **113**

Equipment Number **15**

Location **Hays**

Recorded By **D.Kerr**

Witnessed By **Robert Hendrix**

<<< Fold Here >>>

All interpretations are opinions based on inferences from electrical or other measurements and we cannot and do not guarantee the accuracy or correctness of any interpretation, and we shall not, except in the case of gross or willful negligence on our part, be liable or responsible for any loss, costs, damages, or expenses incurred or sustained by anyone resulting from any interpretation made by any of our officers, agents or employees. These interpretations are also subject to our general terms and conditions set out in our current Price Schedule.

Comments

Thank you for using Pioneer Energy Services
www.pioneerenergy.com
 785 625 3858

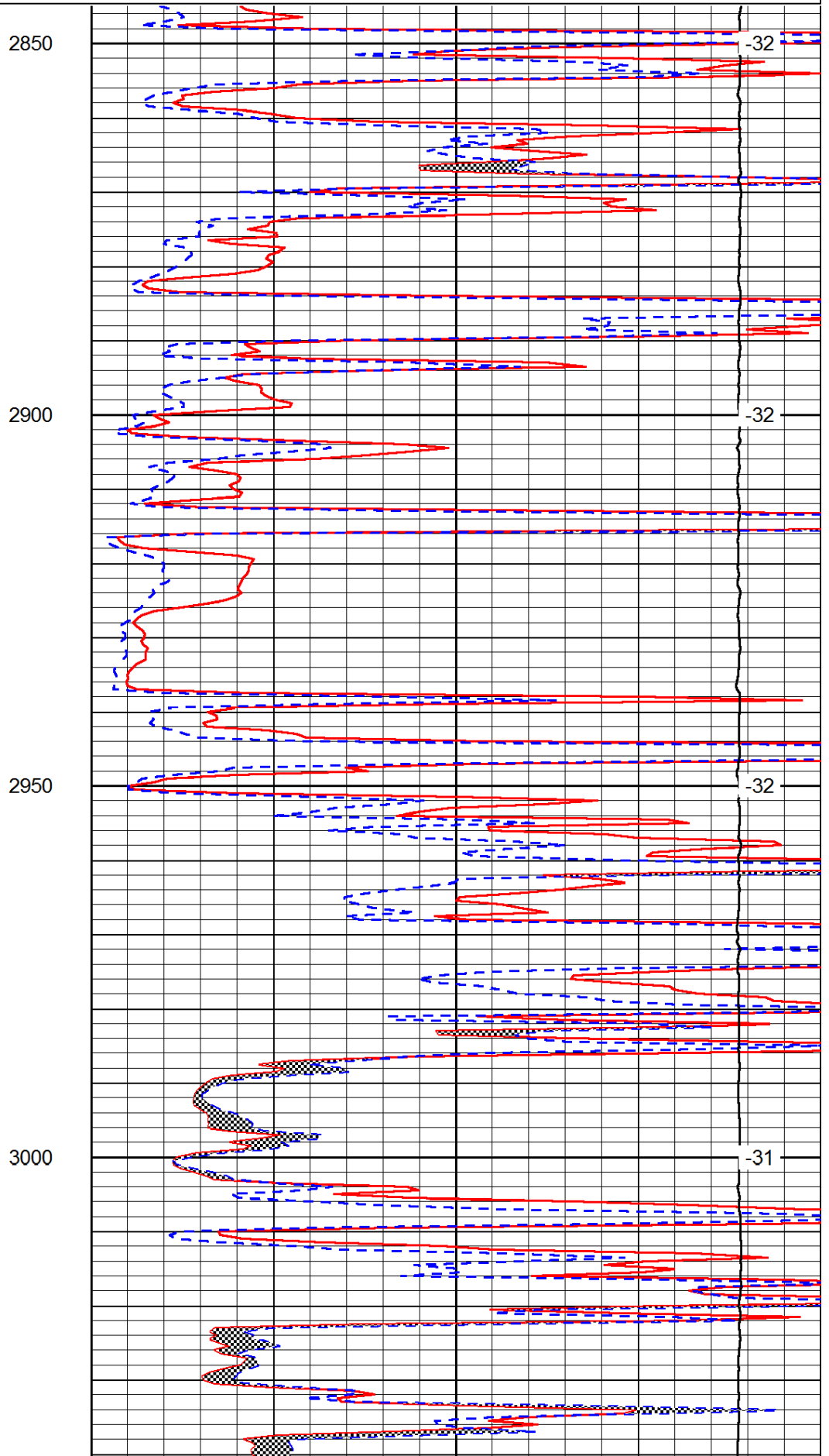
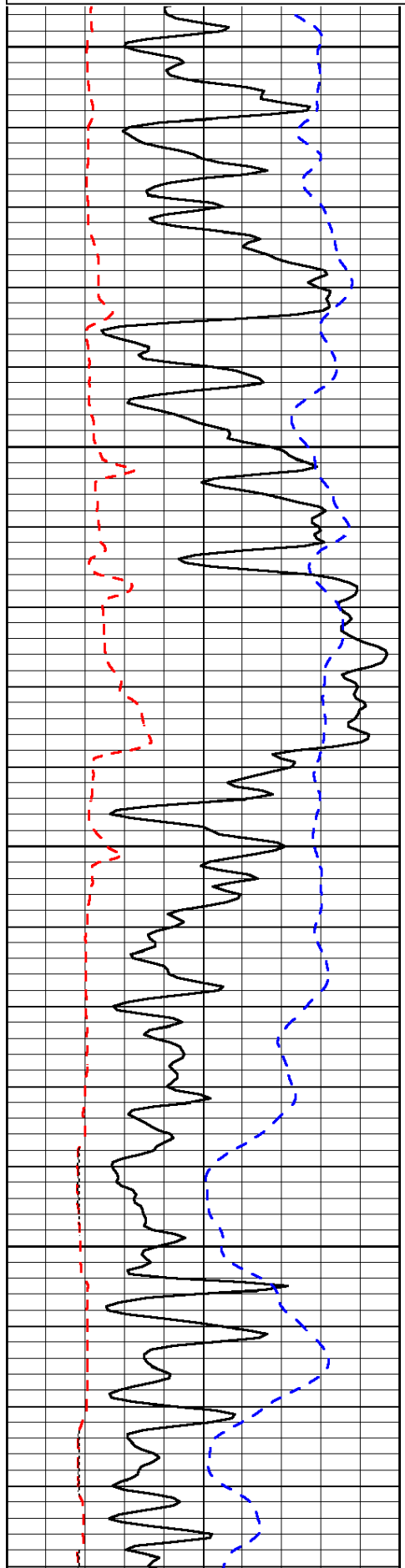
Schoenchen KS, 3 West to 210 RD,
 1 South to County Line, East Into

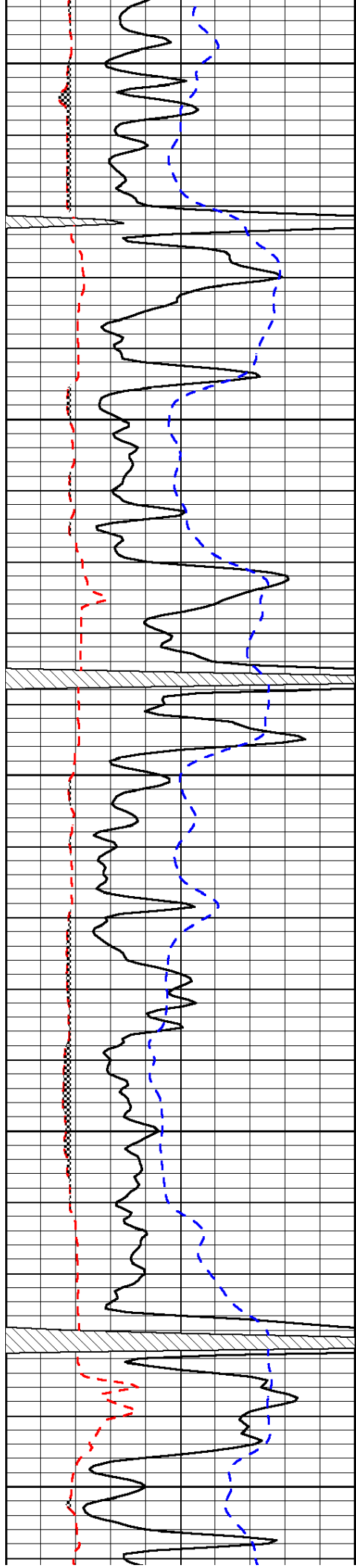
Database File: c:\warrior\data\murfin_braun #1-36\murfin_braun_1_36hd.db
 Dataset Pathname: DIL\murfstk
 Presentation Format: micro
 Dataset Creation: Sun Jan 13 03:15:05 2013
 Charted by: Depth in Feet scaled 1:240

0	Gamma Ray	150
6	Micro Log Caliper (GAPI)	16
-200	SP (mV)	0

0	Micro Inverse 1 X 1	40
0	Micro Normal 2"	40
15000	Line Weight	0

LSPD





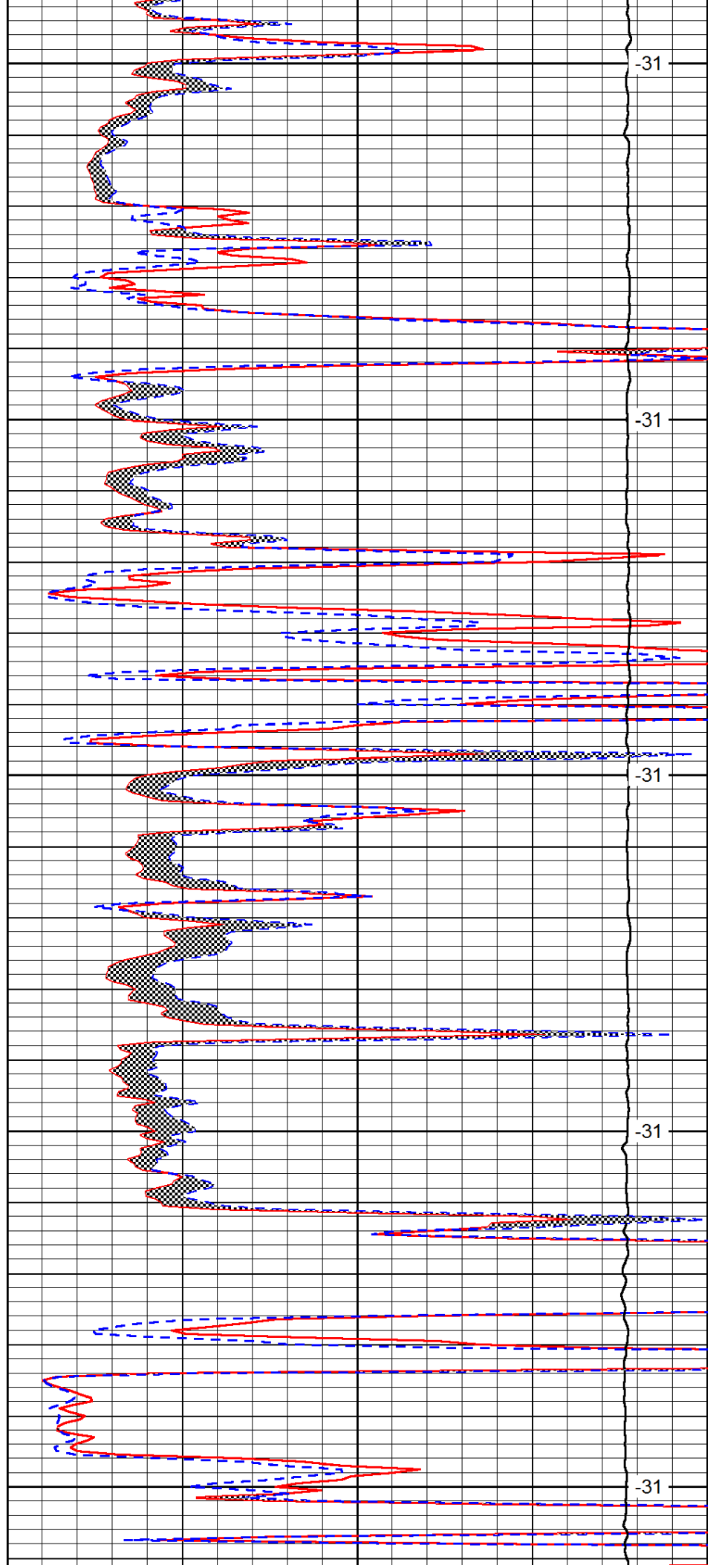
3050

3100

3150

3200

3250



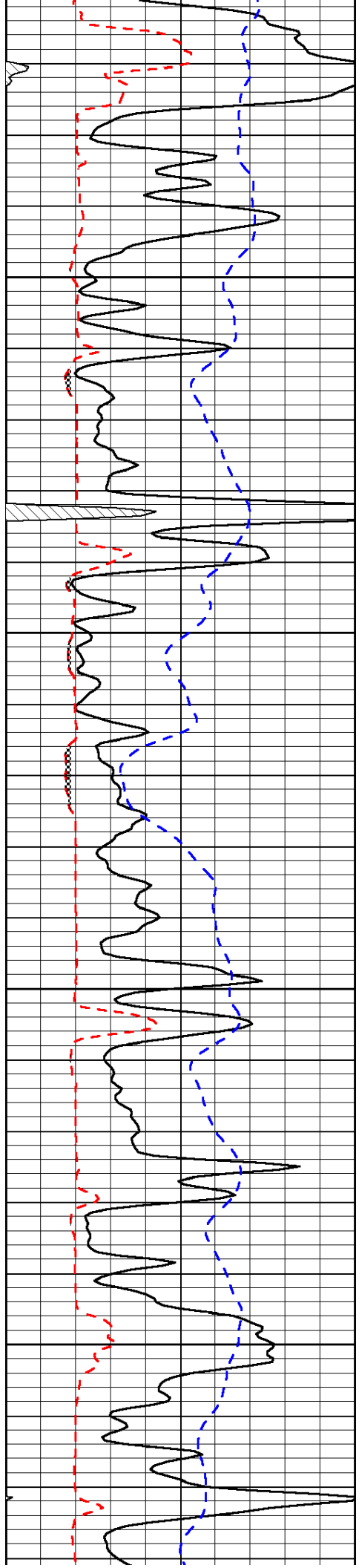
-31

-31

-31

-31

-31

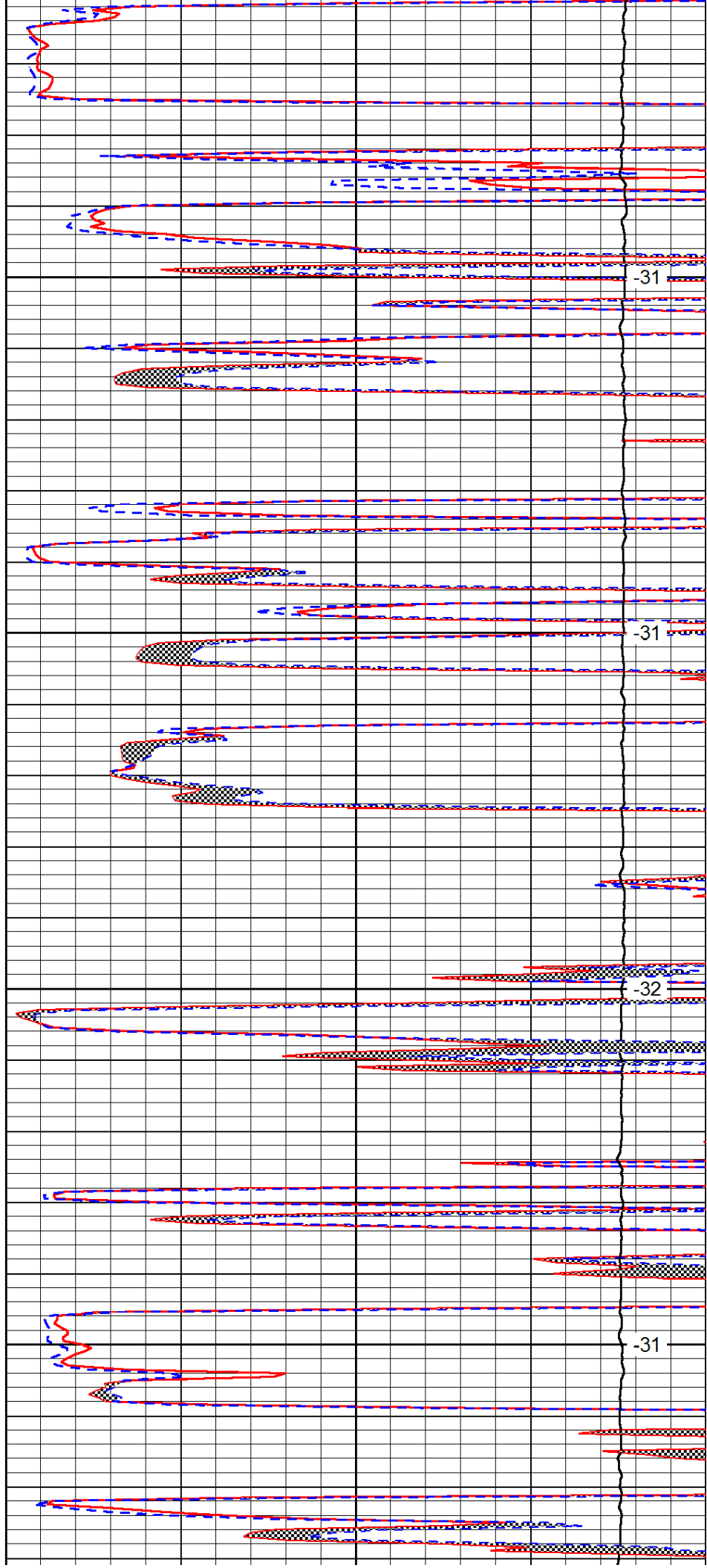


3300

3350

3400

3450

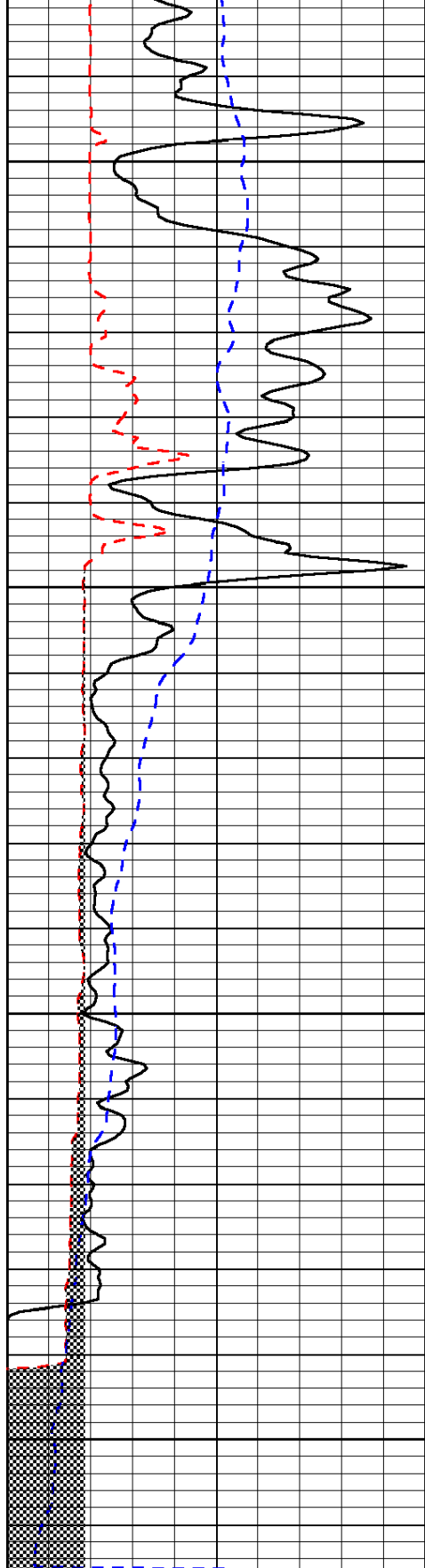


-31

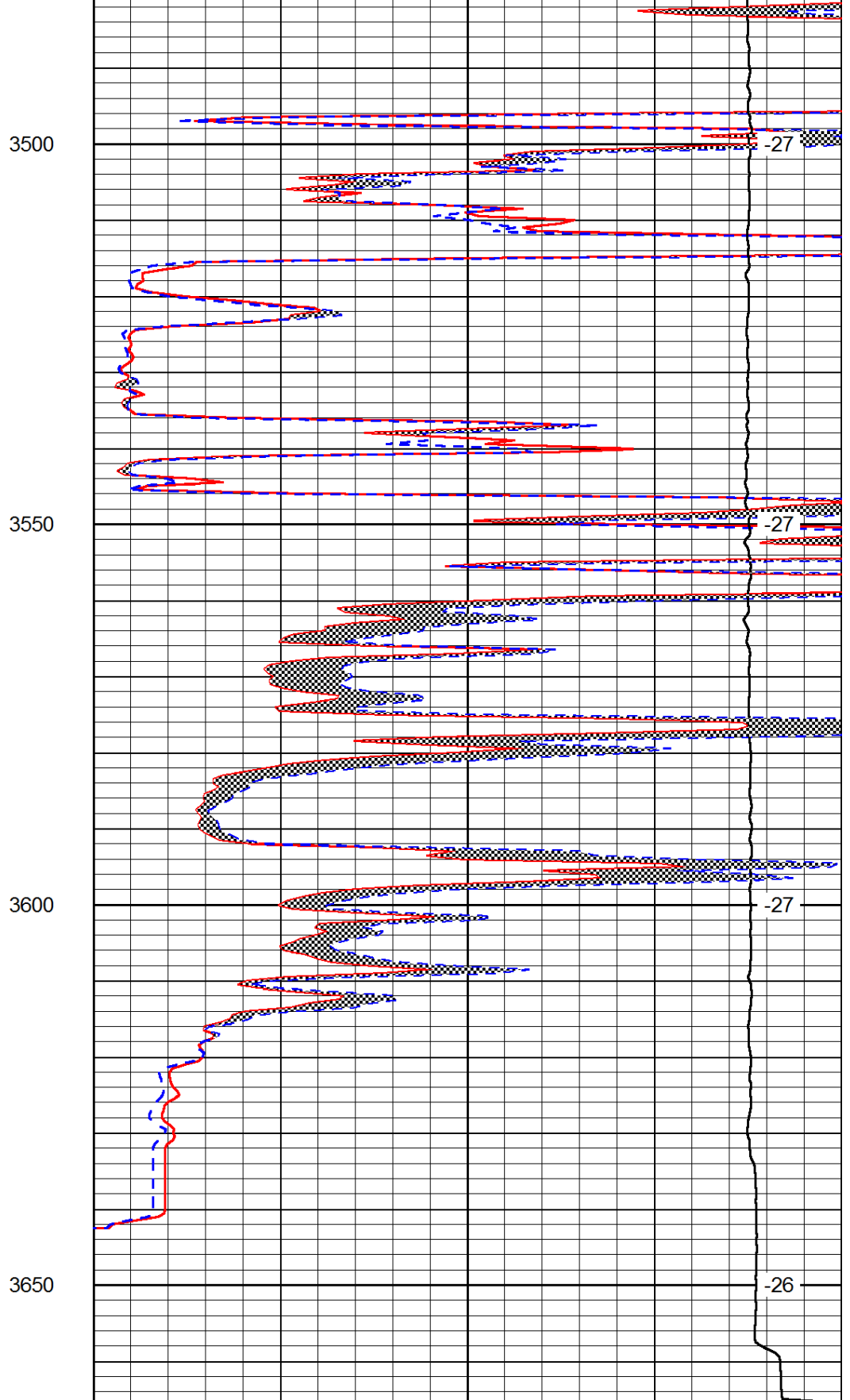
-31

-32

-31



0	Gamma Ray	150
6	Micro Log Caliper (GAPI)	16
-200	SP (mV)	0



0	Micro Inverse 1 X 1	40
0	Micro Normal 2''	40
15000	Line Weight	0

LSPD